

Paper Feed Unit PB1110
(D3EQ)
Parts Catalog

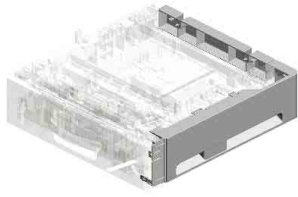
Parts change information sample

 **Add**

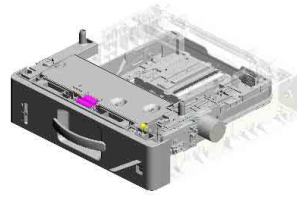
 **Update**

 **Delete**

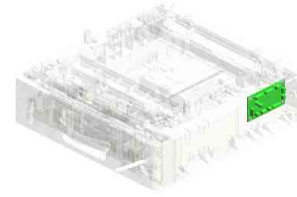
Unit All



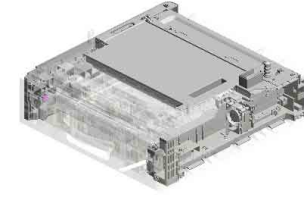
U001
EXTERIOR



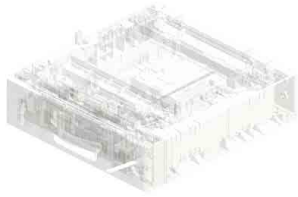
U002
PAPER FEED



U003
ELECTRICAL



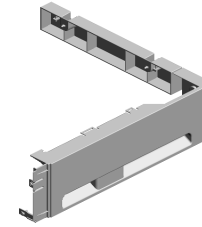
U004
MAIN FRAME



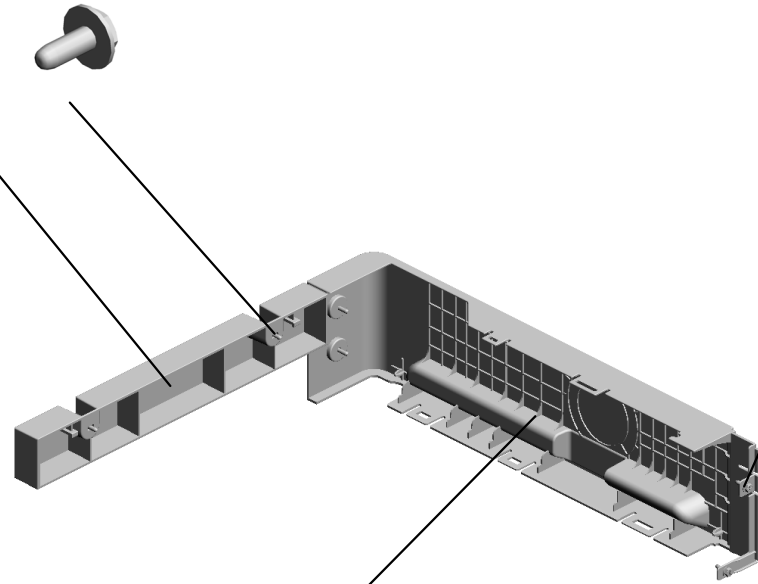
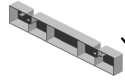
U005
ACCESSORIES

U001
EXTERIOR

1.03603008N
(x2)
SCREW:M3X8



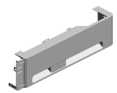
4.D3ER1253
COVER:REAR



2.04583010N
(x4)
HEXAGON HEAD TAPPING SCREW:3 X10

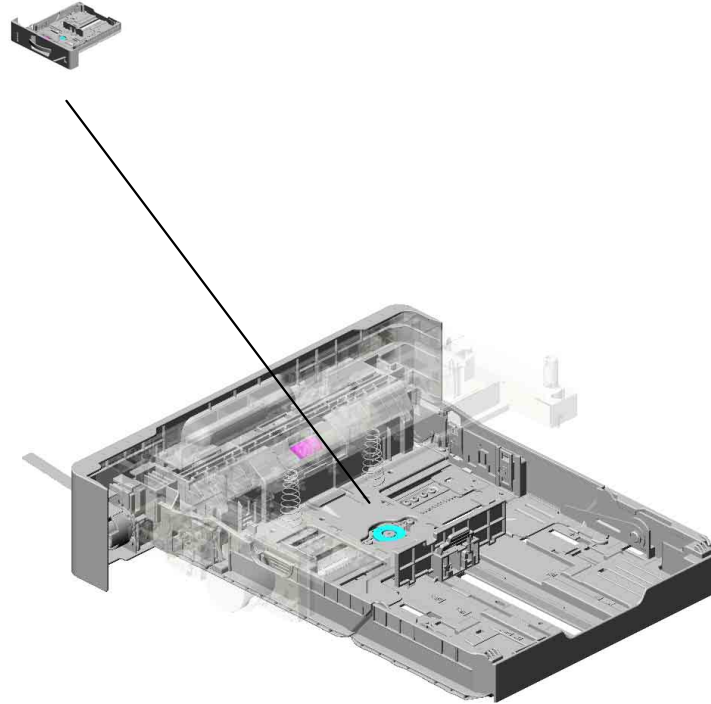


3.D3EQ1250
COVER:RIGHT:250
TYPE



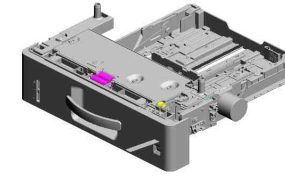
U002.PAPER FEED

U002 S001
D3EQ2527
PAPER TRAY:250TYPE:ASS'
Y



| | | | | |
|------|-------------|------|------|------|
| U001 | U002 | U003 | U004 | U005 |
|------|-------------|------|------|------|

U002 PAPER FEED



- 5.04593010N (x2) BINDING HEAD TAPPING SCREW:3X10
- 66.D3ER1123 TIGHTENER:TRANSPORT
- 9.AA080249 (x2) BUSHING - VERTICAL TRANSPORT
- 41.D2053354 COLLAR:TONER SUPPLY:HOUSING
- 12.AA143611 (x2) STEPPED SCREW:GUIDE PLATE:VERTICAL TRANSPORT

- 11.AA082173 (x3) PLAIN SHAFT BEARING:6X10X6

- 4.04583010N (x16) HEXAGON HEAD TAPPING SCREW:3X10

- 64.D3ER1115 SHAFT:TIMING PULLEY:PAPER FEED

- 6.08050104 (x8) RETAINING RINGS:SOLENOID:4

- 10.AA082170 PLAIN SHAFT BEARING:DIA4XDIA8X5:EG-1

- 7.11050758 (x15) CLAMP:LWSM-0306A

- 17.B7004428 TIMING BELT:B40S2M158

- 65.D3ER1122 TIMING PULLEY:TRANSPORT:T33

- 16.AX060435 DC MOTOR:GEAR:10W:BRUSHLESS:M1

- 2.03603006N (x10) SCREW - M3X6

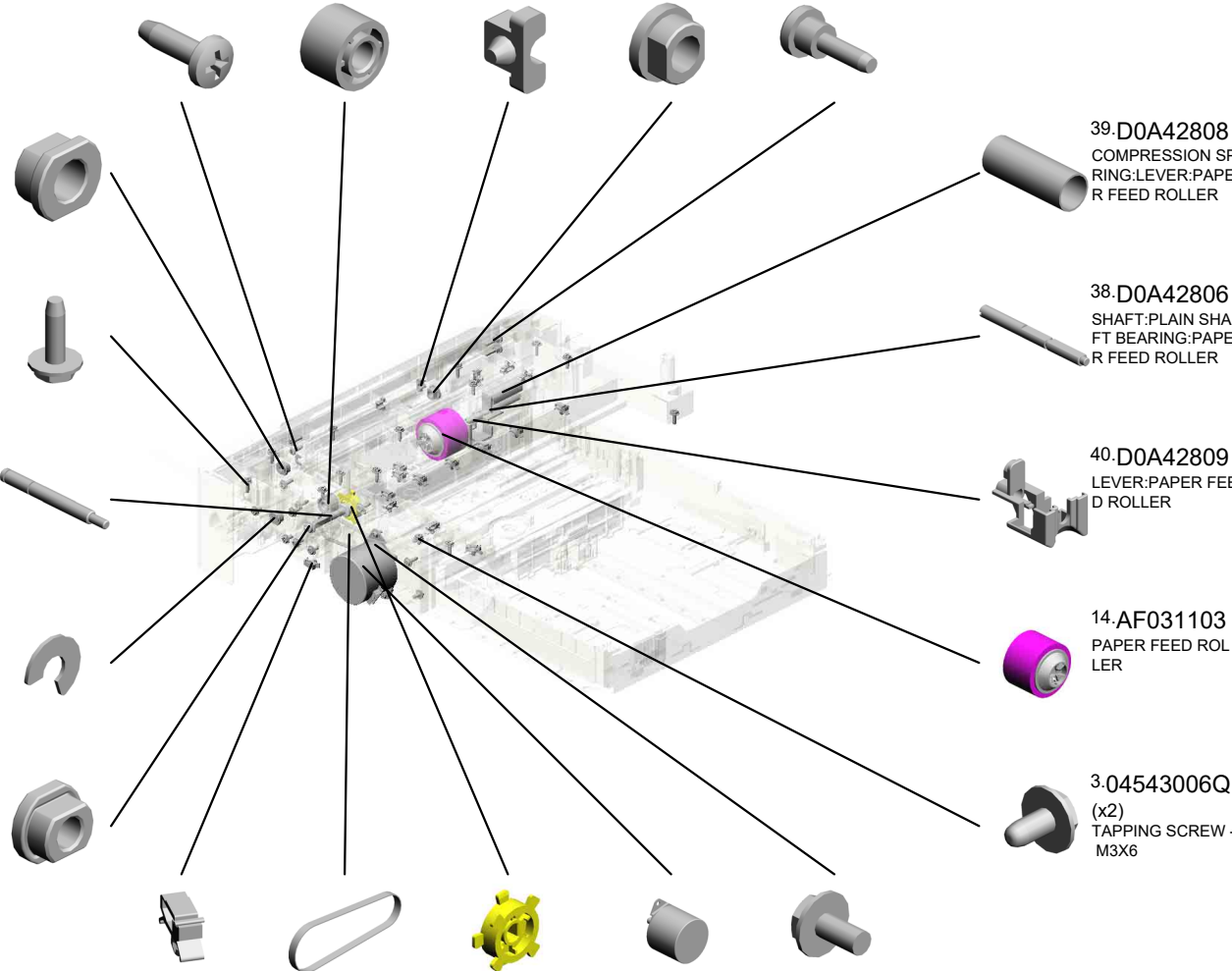
- 39.D0A42808 COMPRESSION SPRING:LEVER:PAPER FEED ROLLER

- 38.D0A42806 SHAFT:PLAIN SHAFT BEARING:PAPER FEED ROLLER

- 40.D0A42809 LEVER:PAPER FEED ROLLER

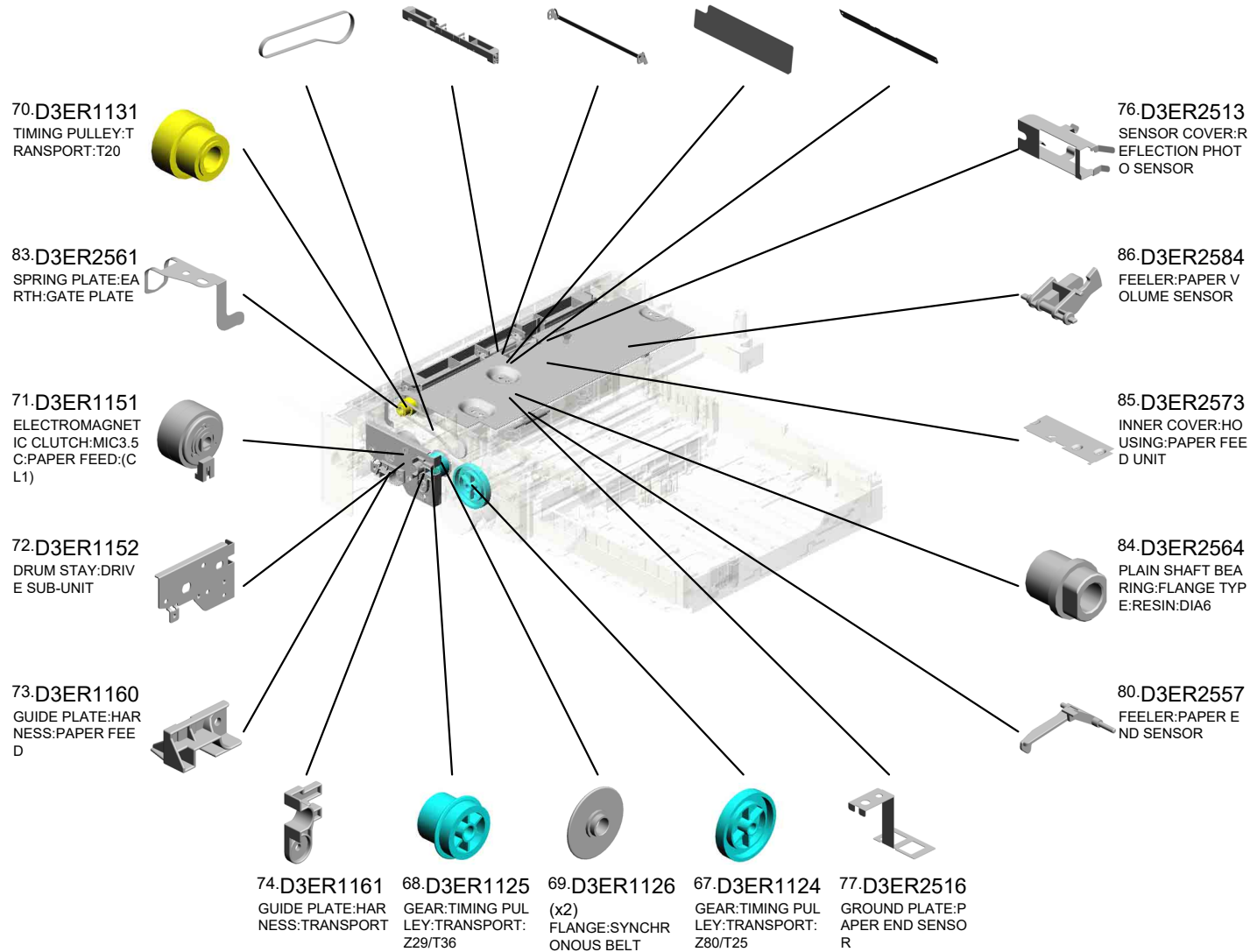
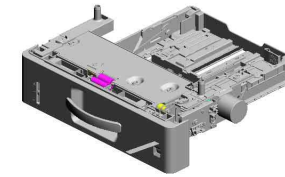
- 14.AF031103 PAPER FEED ROLLER

- 3.04543006Q (x2) TAPPING SCREW - M3X6

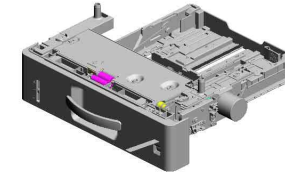


U002 PAPER FEED

- 75.D3ER1174 SYNCHRONOUS BELT:S2M190
- 78.D3ER2553 GUIDE PLATE:DRIVEN
- 81.D3ER2558 GATE PLATE
- 79.D3ER2554 SHEET:VERTICAL TRANSPORT
- 82.D3ER2559 SHEET:GATE PLATE



U002 PAPER FEED



- 89.D3ER2660 ROLLER:VERTICAL TRANSPORT
- 103.M4562555 (x2) COMPRESSION SPRING:TRANSPORT
- 87.D3ER2591 ROLLER:DRIVEN:VERTICAL TRANSPORT
- 91.D3ER6691 SEAL:REFLECTION POLARIZING PLATE

- 90.D3ER2762 GROUND PLATE:SENSOR:PAPER FEED UNIT

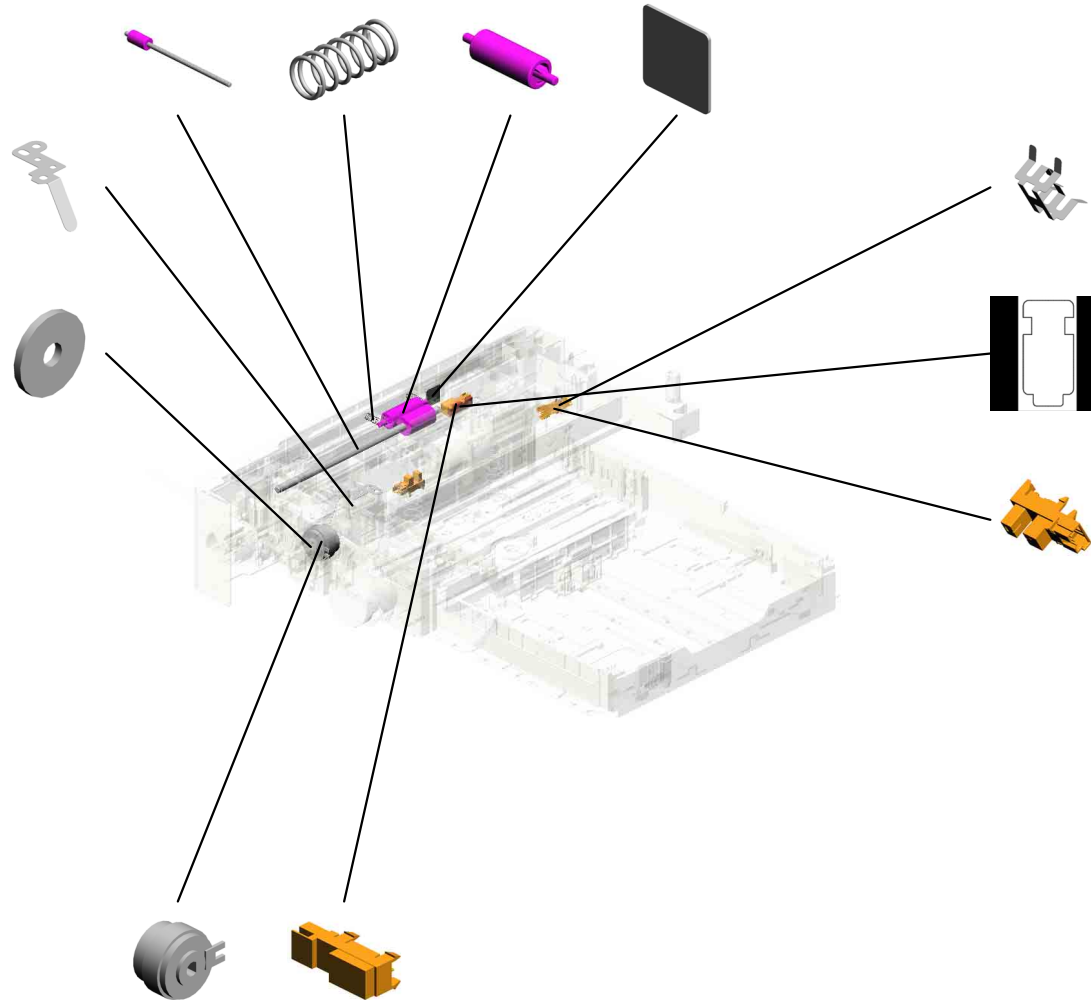
- 102.M4561153 COLLAR:4X14X1.4

- 92.D7942513 SENSOR COVER:PHOTO INTERRUPTOR:PAPER FEED UNIT

- 93.G5701225 SENSOR SHIELDING PLATE

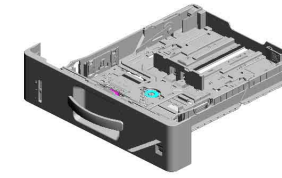
- 95.GW020024 (x2) PHOTO INTERRUPTOR:LG2A24BL1:GF:(S1/S2)

- 101.M4561151 ELECTROMAGNETIC CLUTCH:MIC2.5T:VERTICAL TRANSPORT:(CL2)
- 94.GW010007 PHOTO REFLECTION SENSOR:EXIT:(S3)

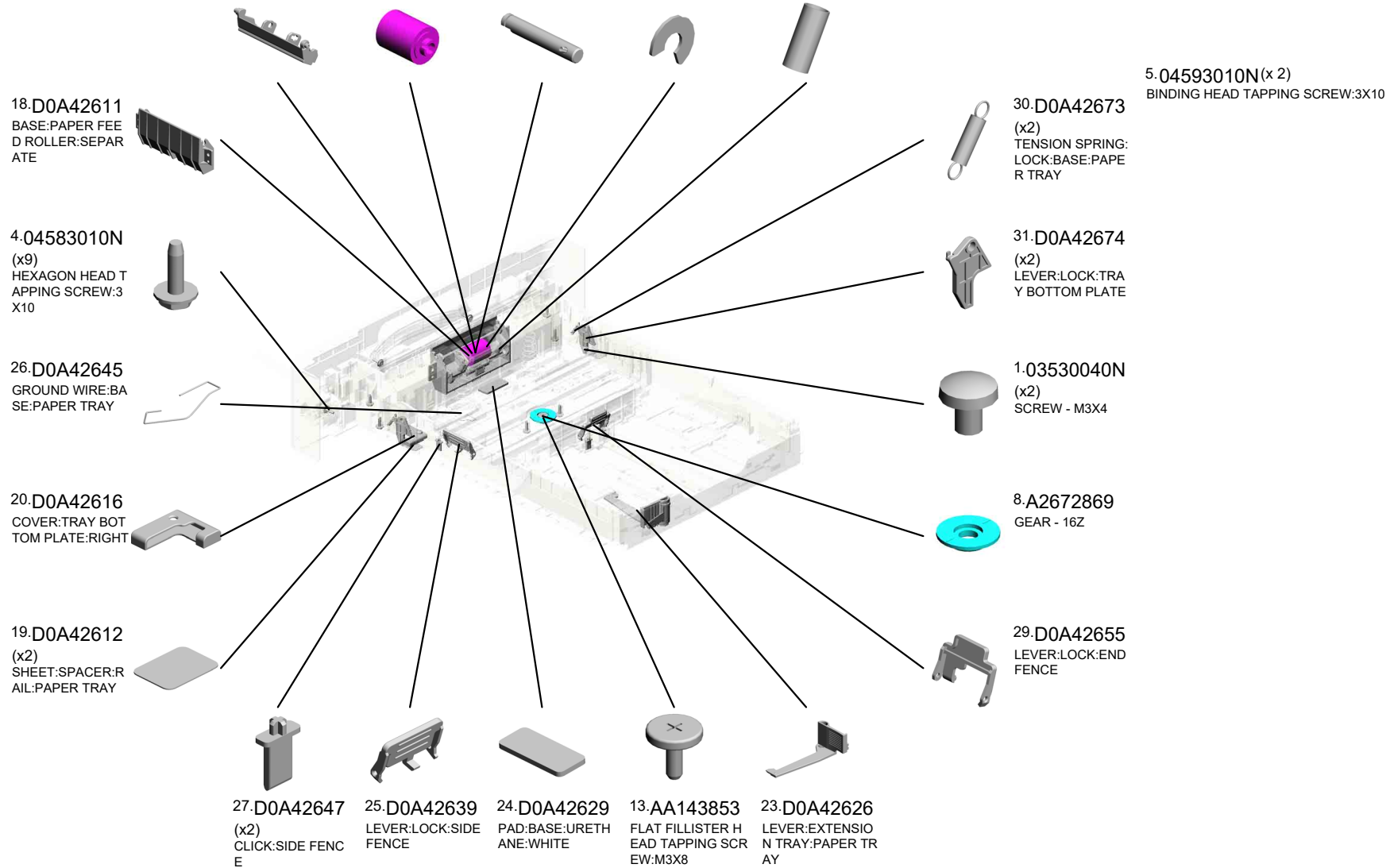


U002_S001
PAPER TRAY:250TYPE:ASS'Y

- 22.D0A42622 BRACKET:PAPER FEED ROLLER:SEPARATE
- 15.AF032100 PAPER FEED ROLLER:SEPARATE:MAIN:EA45G
- 28.D0A42649 SHAFT:PAPER FEED ROLLER:SHORT:PRESS FIT
- 6.08050104 RETAINING RINGS -E:SILENCER:DIA4
- 21.D0A42620 (x2) COMPRESSION SPRING:SEPARATE:PRE:0.3N

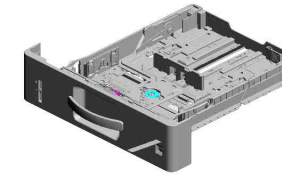


42.D3EQ2527
PAPER TRAY:250TYPE:ASS'Y



U002_S001
PAPER TRAY:250TYPE:ASS'Y

- 37.D0A42695 GRIP:PAPER TRAY
- 51.D3EQ2652 GUIDE:FRONT:PAPER TRAY:250TYPE
- 45.D3EQ2615 COVER:SEPARATE:250TYPE
- 52.D3EQ2654 DECAL:PAPER SE T DIRECTION:LEFT:250TYPE
- 47.D3EQ2620 (x2) COMPRESSION SPRING:PAPER TRAY:250TYPE



- 42.D3EQ2527 PAPER TRAY:250TYPE:ASS'Y

- 53.D3EQ2655 DECAL:PAPER SE T DIRECTION:RIGHT:250TYPE



- 33.D0A42679 DECAL:DIAL:PAPER SIZE SENSOR



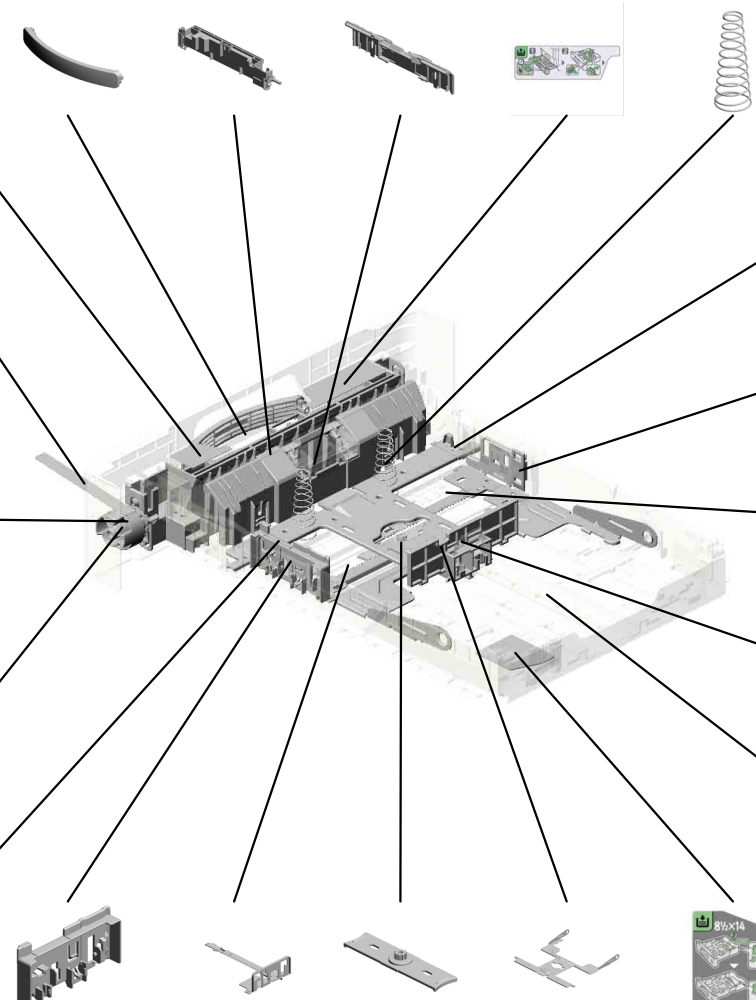
- 35.D0A42683 LEVER:PAPER SIZE SENSOR BOARD



- 36.D0A42685 DIAL:PAPER SIZE SENSOR BOARD



- 34.D0A42680 DECAL:SIDE FENCE:UPPER LIMIT



- 46.D3EQ2617 COVER:TRAY BOTTOM PLATE:LEFT:250TYPE



- 56.D3EQ2663 PRESSURE PLATE:SIDE FENCE:LEFT:250TYPE:REAR



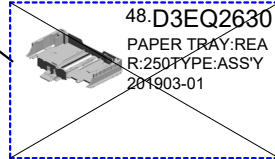
- 55.D3EQ2662 SIDE FENCE:LEFT:PEEN



- 54.D3EQ2656 END FENCE



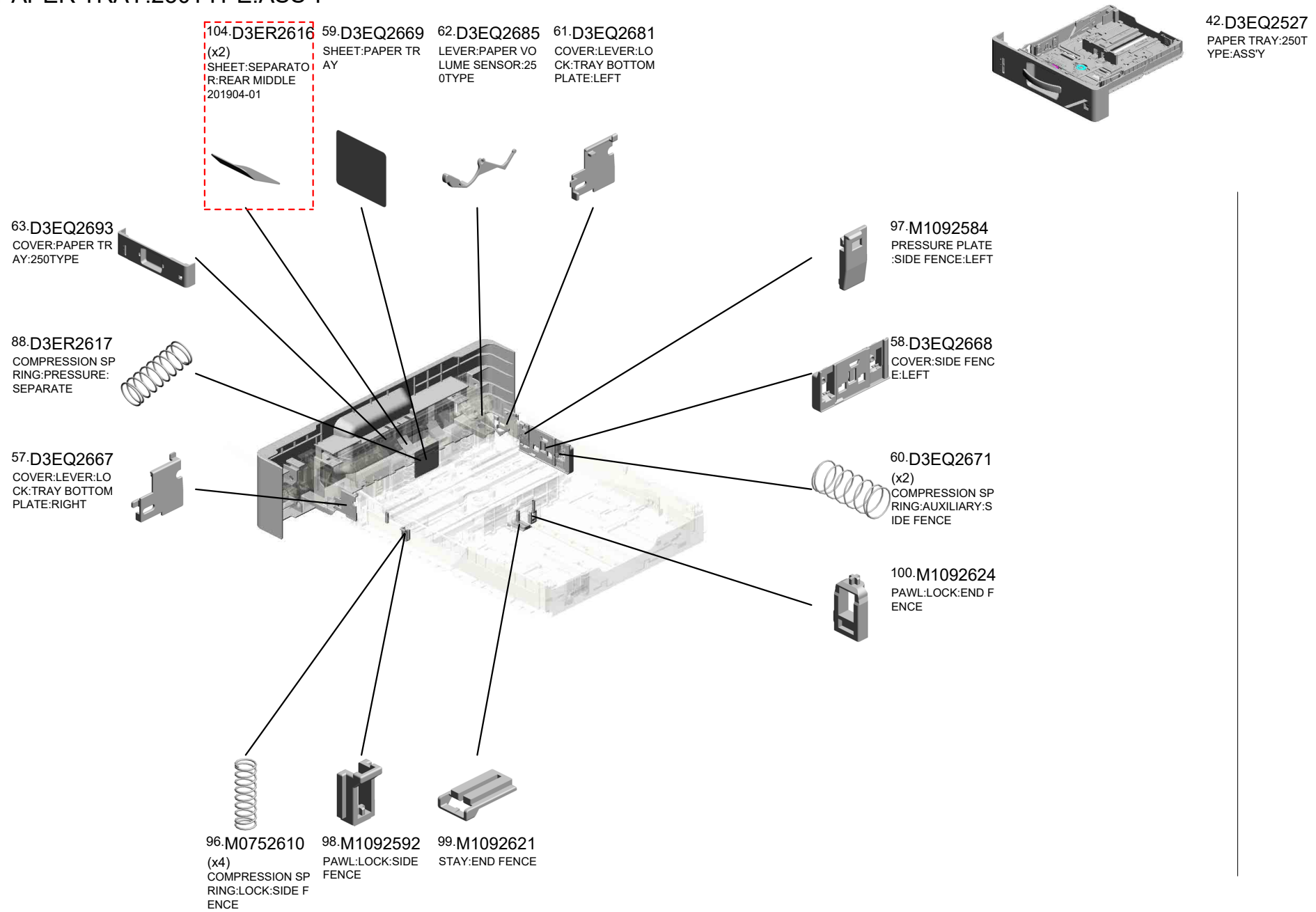
- 48.D3EQ2630 PAPER TRAY:REAR:250TYPE:ASS'Y 201903-01



- 50.D3EQ2648 COVER:SIDE FENCE:RIGHT
- 49.D3EQ2642 SIDE FENCE:RIGHT:PEEN
- 32.D0A42676 HOLDER:PINION:SCREW
- 43.D3EQ2606 TRAY BOTTOM PLATE:250TYPE:PEEN
- 44.D3EQ2609 DECAL:EXTENSION TRAY:OPERATION

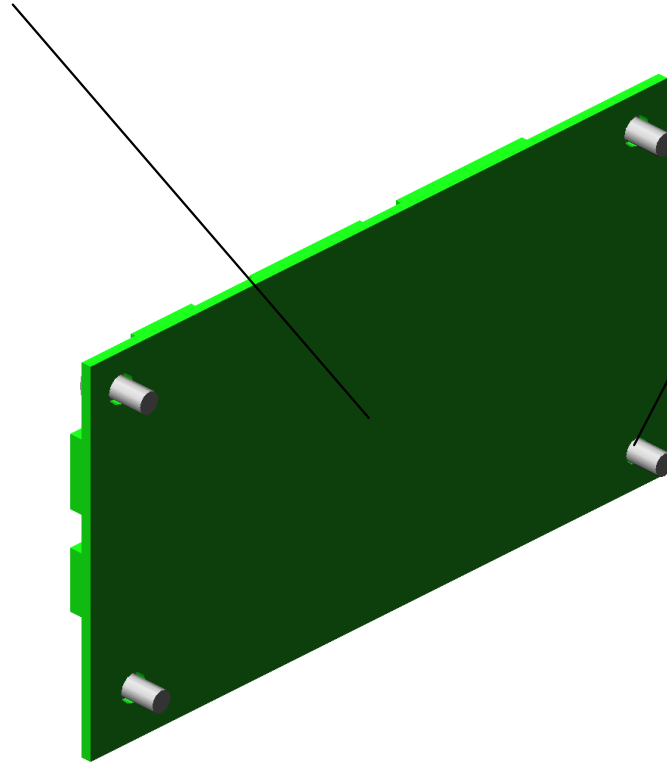
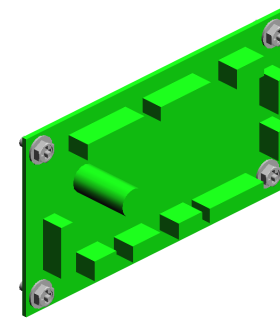


U002_S001
 PAPER TRAY:250TYPE:ASS'Y



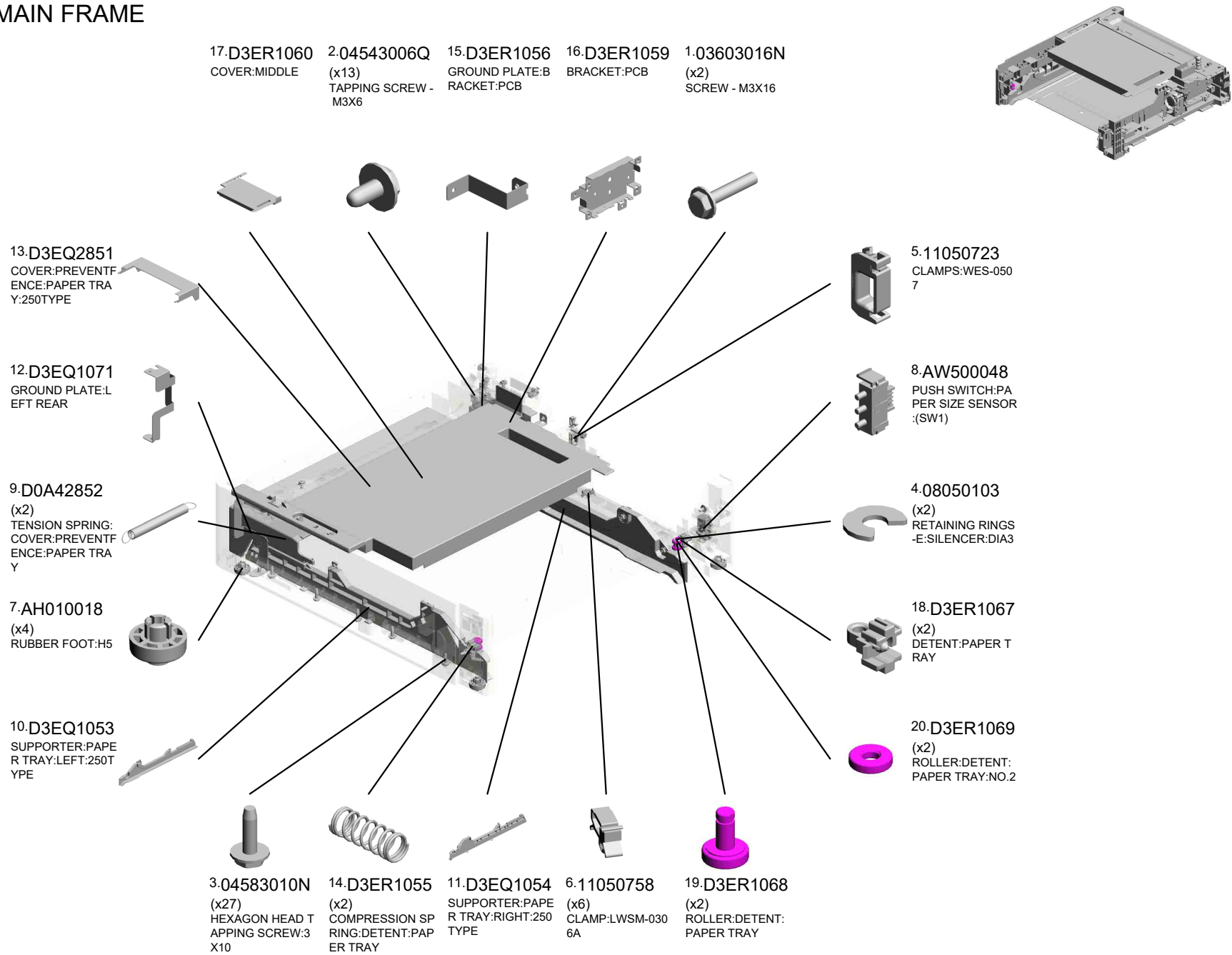
U003
ELECTRICAL

2:D3EQ5150
PCB:MAIN CONTR
OL:ASS'Y:(PCB1)



1-03603006N
(x4)
SCREW - M3X6

U004 MAIN FRAME

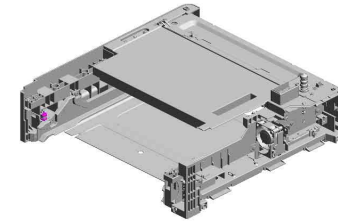


U004 MAIN FRAME

24.D3ER1096 GROUND PLATE:D
RAWER:UPPER

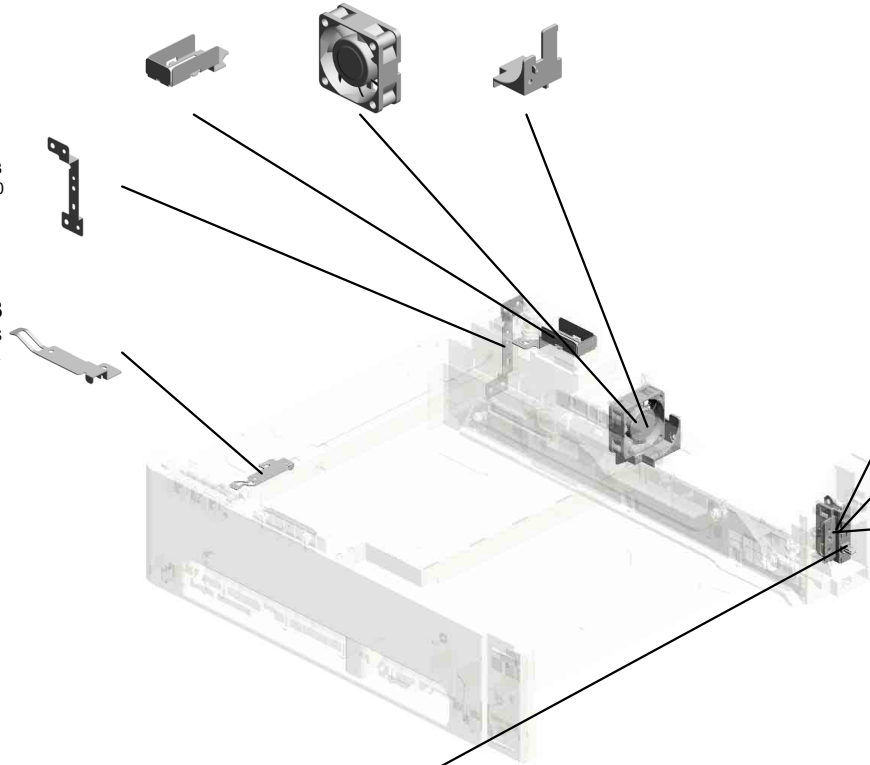
25.GX640029 FAN:MM40X15:NID
EC:L:(FAN1)

23.D3ER1091 COVER:GUIDE:HA
RNESS



29.M4571056 GROUND PLATE:B
RACKET:BASE:250
TYPE

21.D3ER1073 GROUND PLATE:S
TAY:REAR UPPER



22.D3ER1084 GROUND PLATE:P
USH SWITCH:PAP
ER SIZE SENSOR

27.M4561082 SPACER:PAPER SI
ZE SENSOR BOAR
D:MIDDLE

26.M4561081 HOLDER:PAPER SI
ZE SENSOR

28.M4561083
(x2)
SPACER:PAPER SI
ZE SENSOR BOAR
D:OUTER

U005
ACCESSORIES

| | | | | |
|------|------|------|------|------|
| U001 | U002 | U003 | U004 | U005 |
|------|------|------|------|------|

Exclusive Parts

| Number | Part Name | Group | ID |
|----------|--|-----------|----|
| A2672869 | GEAR - 16Z | U002_S001 | 8 |
| AA080249 | BUSHING - VERTICAL TRANSPORT | U002 | 9 |
| AA082170 | PLAIN SHAFT BEARING:DIA4XDIA8X5:EG-1 | U002 | 10 |
| AA082173 | PLAIN SHAFT BEARING:6X10X6 | U002 | 11 |
| AA143611 | STEPPED SCREW:GUIDE PLATE:VERTICAL TRANSPORT | U002 | 12 |
| AA143853 | FLAT FILLISTER HEAD TAPPING SCREW:M3X8 | U002_S001 | 13 |
| AF031103 | PAPER FEED ROLLER | U002 | 14 |
| AF032100 | PAPER FEED ROLLER:SEPARATE:MAIN:EA45G | U002_S001 | 15 |
| AH010018 | RUBBER FOOT:H5 | U004 | 7 |
| AW500048 | PUSH SWITCH:PAPER SIZE SENSOR:(SW1) | U004 | 8 |
| AX060435 | DC MOTOR:GEAR:10W:BRUSHLESS:(M1) | U002 | 16 |
| B7004428 | TIMING BELT:B40S2M158 | U002 | 17 |
| D0A42611 | BASE:PAPER FEED ROLLER:SEPARATE | U002_S001 | 18 |
| D0A42612 | SHEET:SPACER:RAIL:PAPER TRAY | U002_S001 | 19 |
| D0A42616 | COVER:TRAY BOTTOM PLATE:RIGHT | U002_S001 | 20 |
| D0A42620 | COMPRESSION SPRING:SEPARATE:PRE:0.3N | U002_S001 | 21 |
| D0A42622 | BRACKET:PAPER FEED ROLLER:SEPARATE | U002_S001 | 22 |
| D0A42626 | LEVER:EXTENSION TRAY:PAPER TRAY | U002_S001 | 23 |
| D0A42629 | PAD:BASE:URETHANE:WHITE | U002_S001 | 24 |
| D0A42639 | LEVER:LOCK:SIDE FENCE | U002_S001 | 25 |
| D0A42645 | GROUND WIRE:BASE:PAPER TRAY | U002_S001 | 26 |
| D0A42647 | CLICK:SIDE FENCE | U002_S001 | 27 |
| D0A42649 | SHAFT:PAPER FEED ROLLER:SHORT:PRESS FIT | U002_S001 | 28 |

| Number | Part Name | Group | ID |
|----------|---|-----------|----|
| D0A42655 | LEVER:LOCK:END FENCE | U002_S001 | 29 |
| D0A42673 | TENSION SPRING:LOCK:BASE:PAPER TRAY | U002_S001 | 30 |
| D0A42674 | LEVER:LOCK:TRAY BOTTOM PLATE | U002_S001 | 31 |
| D0A42676 | HOLDER:PINION:SCREW | U002_S001 | 32 |
| D0A42679 | DECAL:DIAL:PAPER SIZE SENSOR | U002_S001 | 33 |
| D0A42680 | DECAL:SIDE FENCE:UPPER LIMIT | U002_S001 | 34 |
| D0A42683 | LEVER:PAPER SIZE SENSOR BOARD | U002_S001 | 35 |
| D0A42685 | DIAL:PAPER SIZE SENSOR BOARD | U002_S001 | 36 |
| D0A42695 | GRIP:PAPER TRAY | U002_S001 | 37 |
| D0A42806 | SHAFT:PLAIN SHAFT BEARING:PAPER FEED ROLLER | U002 | 38 |
| D0A42808 | COMPRESSION SPRING:LEVER:PAPER FEED ROLLER | U002 | 39 |
| D0A42809 | LEVER:PAPER FEED ROLLER | U002 | 40 |
| D0A42852 | TENSION SPRING:COVER:PREVENT FENCE:PAPER TRAY | U004 | 9 |
| D2053354 | COLLAR:TONER SUPPLY:HOUSING | U002 | 41 |
| D3EQ1053 | SUPPORTER:PAPER TRAY:LEFT:250TYPE | U004 | 10 |
| D3EQ1054 | SUPPORTER:PAPER TRAY:RIGHT:250TYPE | U004 | 11 |
| D3EQ1071 | GROUND PLATE:LEFT REAR | U004 | 12 |
| D3EQ1250 | COVER:RIGHT:250TYPE | U001 | 3 |
| D3EQ2527 | PAPER TRAY:250TYPE:ASS'Y | U002_S001 | 42 |
| D3EQ2606 | TRAY BOTTOM PLATE:250TYPE:PEEN | U002_S001 | 43 |
| D3EQ2609 | DECAL:EXTENSION TRAY:OPERATE | U002_S001 | 44 |
| D3EQ2615 | COVER:SEPARATE:250TYPE | U002_S001 | 45 |
| D3EQ2617 | COVER:TRAY BOTTOM PLATE:LEFT:250TYPE | U002_S001 | 46 |
| D3EQ2620 | COMPRESSION SPRING:PAPER TRAY:250TYPE | U002_S001 | 47 |

Exclusive Parts

| Number | Part Name | Group | ID |
|----------|---|-----------|----|
| D3EQ2642 | SIDE FENCE:RIGHT:PEEN | U002_S001 | 49 |
| D3EQ2648 | COVER:SIDE FENCE:RIGHT | U002_S001 | 50 |
| D3EQ2652 | GUIDE:FRONT:PAPER TRAY:250TYPE | U002_S001 | 51 |
| D3EQ2654 | DECAL:PAPER SET DIRECTION:LEFT:250TYPE | U002_S001 | 52 |
| D3EQ2655 | DECAL:PAPER SET DIRECTION:RIGHT:250TYPE | U002_S001 | 53 |
| D3EQ2656 | END FENCE | U002_S001 | 54 |
| D3EQ2662 | SIDE FENCE:LEFT:PEEN | U002_S001 | 55 |
| D3EQ2663 | PRESSURE PLATE:SIDE FENCE:LEFT:250TYPE:REAR | U002_S001 | 56 |
| D3EQ2667 | COVER:LEVER:LOCK:TRAY BOTTOM PLATE:RIGHT | U002_S001 | 57 |
| D3EQ2668 | COVER:SIDE FENCE:LEFT | U002_S001 | 58 |
| D3EQ2669 | SHEET:PAPER TRAY | U002_S001 | 59 |
| D3EQ2671 | COMPRESSION SPRING:AUXILIARY:SIDE FENCE | U002_S001 | 60 |
| D3EQ2681 | COVER:LEVER:LOCK:TRAY BOTTOM PLATE:LEFT | U002_S001 | 61 |
| D3EQ2685 | LEVER:PAPER VOLUME SENSOR:250TYPE | U002_S001 | 62 |
| D3EQ2693 | COVER:PAPER TRAY:250TYPE | U002_S001 | 63 |
| D3EQ2851 | COVER:PREVENTFENCE:PAPER TRAY:250TYPE | U004 | 13 |
| D3EQ5150 | PCB:MAIN CONTROL:ASS'Y:(PCB1) | U003 | 2 |
| D3ER1055 | COMPRESSION SPRING:DETENT:PAPER TRAY | U004 | 14 |
| D3ER1056 | GROUND PLATE:BRACKET:PCB | U004 | 15 |
| D3ER1059 | BRACKET:PCB | U004 | 16 |
| D3ER1060 | COVER:MIDDLE | U004 | 17 |
| D3ER1067 | DETENT:PAPER TRAY | U004 | 18 |
| D3ER1068 | ROLLER:DETENT:PAPER TRAY | U004 | 19 |
| D3ER1069 | ROLLER:DETENT:PAPER TRAY:NO.2 | U004 | 20 |
| D3ER1073 | GROUND PLATE:STAY:REAR UPPER | U004 | 21 |

| Number | Part Name | Group | ID |
|----------|--|-------|----|
| D3ER1084 | GROUND PLATE:PUSH SWITCH:APER SIZE SENSOR | U004 | 22 |
| D3ER1091 | COVER:GUIDE:HARNESS | U004 | 23 |
| D3ER1096 | GROUND PLATE:DRAWER:UPPER | U004 | 24 |
| D3ER1115 | SHAFT:TIMING PULLEY:PAPER FEED | U002 | 64 |
| D3ER1122 | TIMING PULLEY:TRANSPORT:T33 | U002 | 65 |
| D3ER1123 | TIGHTENER:TRANSPORT | U002 | 66 |
| D3ER1124 | GEAR:TIMING PULLEY:TRANSPORT:T:Z80/T25 | U002 | 67 |
| D3ER1125 | GEAR:TIMING PULLEY:TRANSPORT:T:Z29/T36 | U002 | 68 |
| D3ER1126 | FLANGE:SYNCHRONOUS BELT | U002 | 69 |
| D3ER1131 | TIMING PULLEY:TRANSPORT:T20 | U002 | 70 |
| D3ER1151 | ELECTROMAGNETIC CLUTCH:MICRO:3.5C:PAPER FEED:(CL1) | U002 | 71 |
| D3ER1152 | DRUM STAY:DRIVE SUB-UNIT | U002 | 72 |
| D3ER1160 | GUIDE PLATE:HARNESS:PAPER FEED | U002 | 73 |
| D3ER1161 | GUIDE PLATE:HARNESS:TRANSPORT | U002 | 74 |
| D3ER1174 | SYNCHRONOUS BELT:S2M190 | U002 | 75 |
| D3ER1253 | COVER:REAR | U001 | 4 |
| D3ER2513 | SENSOR COVER:REFLECTION PHOTO SENSOR | U002 | 76 |
| D3ER2516 | GROUND PLATE:PAPER END SENSOR | U002 | 77 |
| D3ER2553 | GUIDE PLATE:DRIVEN | U002 | 78 |
| D3ER2554 | SHEET:VERTICAL TRANSPORT | U002 | 79 |
| D3ER2557 | FEELER:PAPER END SENSOR | U002 | 80 |
| D3ER2558 | GATE PLATE | U002 | 81 |
| D3ER2559 | SHEET:GATE PLATE | U002 | 82 |
| D3ER2561 | SPRING PLATE:EARTH:GATE PLATE | U002 | 83 |
| D3ER2564 | PLAIN SHAFT BEARING:FLANGE TYPE:RESIN:DIA6 | U002 | 84 |
| D3ER2573 | INNER COVER:HOUSING:PAPER FEED UNIT | U002 | 85 |

Exclusive Parts

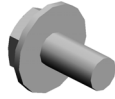
| Number | Part Name | Group | ID |
|-----------------|--|------------------|------------|
| D3ER2584 | FEELER:PAPER VOLUME SENSOR | U002 | 86 |
| D3ER2591 | ROLLER:DRIVEN:VERTICAL TRANSPORT | U002 | 87 |
| D3ER2616 | SHEET:SEPARATOR:REAR MIDDLE | U002_S001 | 104 |
| D3ER2617 | COMPRESSION SPRING:PRESSURE:SEPARATE | U002_S001 | 88 |
| D3ER2660 | ROLLER:VERTICAL TRANSPORT | U002 | 89 |
| D3ER2762 | GROUND PLATE:SENSOR:PAPER FEED UNIT | U002 | 90 |
| D3ER6691 | SEAL:REFLECTION POLARIZING PLATE | U002 | 91 |
| D7942513 | SENSOR COVER:PHOTOINTERRUPTOR:PAPER FEED UNIT | U002 | 92 |
| G5701225 | SENSOR SHIELDING PLATE | U002 | 93 |
| GW010007 | PHOTO REFLECTION SENSOR:EXIT:(S3) | U002 | 94 |
| GW020024 | PHOTOINTERRUPTOR:LG2A24BL1:GF:(S1/S2) | U002 | 95 |
| GX640029 | FAN:MM40X15:NIDEC:L:(FAN1) | U004 | 25 |
| M0752610 | COMPRESSION SPRING:LOCK:SIDE FENCE | U002_S001 | 96 |
| M1092584 | PRESSURE PLATE:SIDE FENCE:LEFT | U002_S001 | 97 |
| M1092592 | PAWL:LOCK:SIDE FENCE | U002_S001 | 98 |
| M1092621 | STAY:END FENCE | U002_S001 | 99 |
| M1092624 | PAWL:LOCK:END FENCE | U002_S001 | 100 |
| M4561081 | HOLDER:PAPER SIZE SENSOR | U004 | 26 |
| M4561082 | SPACER:PAPER SIZE SENSOR BOARD:MIDDLE | U004 | 27 |
| M4561083 | SPACER:PAPER SIZE SENSOR BOARD:OUTER | U004 | 28 |
| M4561151 | ELECTROMAGNETIC CLUTCH:MICRO:2.5T:VERTICAL TRANSPORT:(CL2) | U002 | 101 |
| M4561153 | COLLAR:4X14X1.4 | U002 | 102 |
| M4562555 | COMPRESSION SPRING:TRANSPORT | U002 | 103 |
| M4571056 | GROUND PLATE:BRACKET:BASE: | U004 | 29 |

| Number | Part Name | Group | ID |
|--------|-----------|-------|----|
| | 250TYPE | | |

Standard Parts



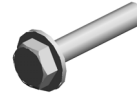
03530040N
SCREW - M3X4



03603006N
SCREW - M3X6



03603008N
SCREW:M3X8



03603016N
SCREW - M3X16



04543006Q
TAPPING SCREW - M3X6



04583010N
HEXAGON HEAD TAPPING S
CREW:3X10



04593010N
BINDING HEAD TAPPING SC
REW:3X10



08050103
RETAINING RINGS-E:SILENC
ER:DIA3



08050104
RETAINING RINGS-E:SILENC
ER:DIA4



11050723
CLAMPS:WES-0507



11050758
CLAMP:LWSM-0306A

Design Change List

| Number | Title | Set | Old Part | | New Part | | Index No. | | Q'ty | Interchg | | Reason | Cut-in S/N |
|-----------|-------------------|-----|----------|-------------------------------|----------|-----------------------------|-----------|-----|------|----------|-----|--------|------------|
| | | | P/N | Name | P/N | Name | Group | ID | | Indiv. | Set | | |
| 201904-01 | 1904 Modification | - | | | D3ER2616 | SHEET:SEPARATOR:REAR MIDDLE | U002_S001 | 104 | 2 | | | | |
| 201903-01 | 1903 Modification | - | D3EQ2630 | PAPER TRAY:REAR:250TYPE:ASS'Y | | | U002_S001 | 48 | 1 | | | | |

