

Cisco Integrated Services Routers 1941 Series Datasheet



Router-Switch.com
Leading Network Hardware Supplier

CONTENT

Overview	2
Appearance	2
Key Features and Benefits	3
Product Specifications	4
Basic Ordering Information.....	8
Sources.....	8

Contact Us

Tel: +1-626-239-8066 (USA) +852-3050-1066 / +852-3174-6166 /

+852-9795-4940 (Hong Kong)

Fax: +852-3050-1066 (Hong Kong)

Email: cisco@router-switch.com (Sales Inquiries)

ccie-support@router-switch.com (CCIE Technical Support)

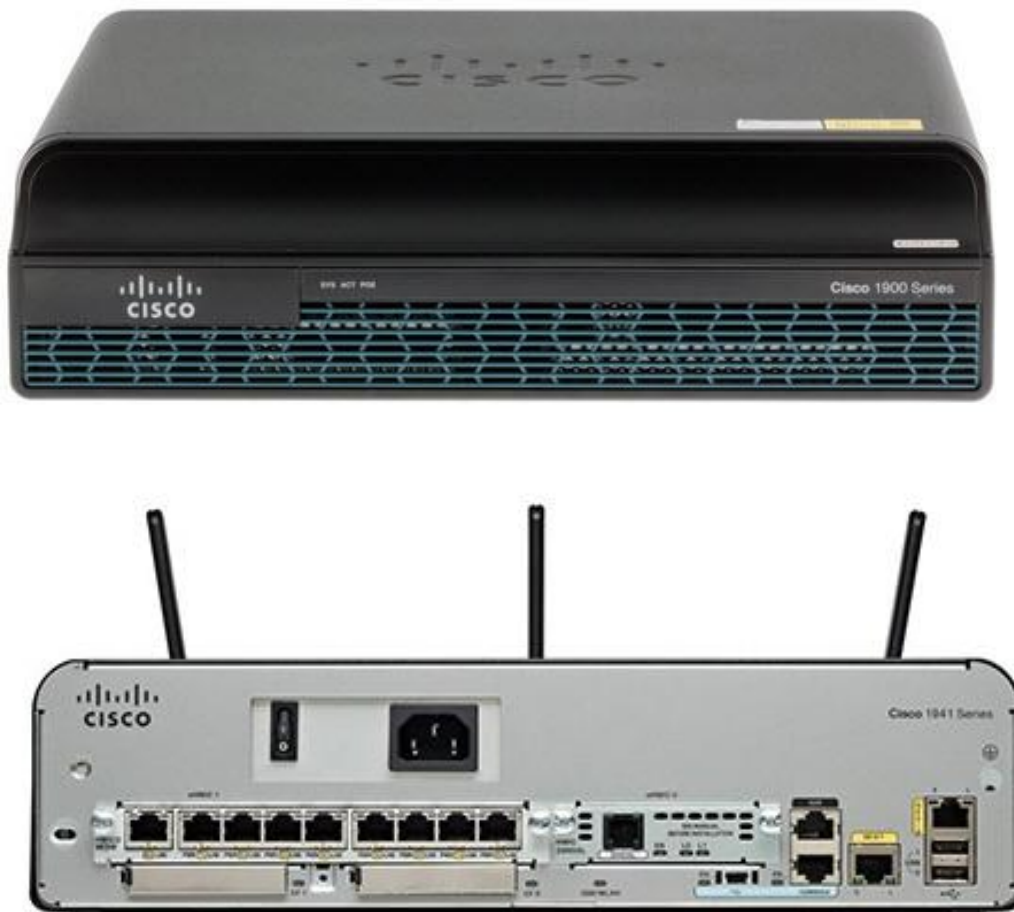
OVERVIEW

Cisco® 1941 builds on the best-in-class offering of the existing Cisco 1841 Integrated Services Routers by offering 2 models - Cisco 1941 and Cisco 1941W. In addition to the support of a wide range of wireless and wired connectivity options supported on Cisco 1941 Series, Cisco 1941W offers integration of IEEE 802.11n access point which is backwards compatible with IEEE 802.11a/b/g access points.

All Cisco 1900 Series Integrated Services Routers offer embedded hardware encryption acceleration, optional firewall, intrusion prevention, and application services. In addition, the platforms support the industries widest range of wired and wireless connectivity options such as T1/E1, xDSL, 3G, 4G LTE, and GE.

APPEARANCE

Figure 1. Cisco Routers 1941 Series



Service Integration

- The Cisco 1941 Series offer increased levels of services integration with data, security, wireless, and mobility services enabling greater efficiencies cost savings.

Services on Demand

- A single Cisco IOS® Software Universal image is installed on each ISR G2. The Universal image contains all of the Cisco IOS technology sets which can be activated with a software license. This allows your business to quickly deploy advanced features without downloading a new IOS image. Additionally, larger default memory is included to support the new capabilities.
- The Cisco Services Ready Engine (SRE) enables a new operational model which allows you to reduce capital expenditures (CapEx) and deploy a variety of application services as needed on a single integrated compute services module.

High Performance with Integrated Services

- The Cisco 1900 Series enables deployment in high speed WAN environments with concurrent services enabled up to 25 Mbps.
- Multi-Gigabit Fabric enables high bandwidth module to module communication without compromising routing performance.

Network Agility

- Designed to address customer business requirements, Cisco 1941 Series with the modular architecture, offers performance range of modular interfaces and services as your network needs grow.
- Modular interfaces offer increased bandwidth, a diversity of connection options, and network resiliency.

Energy Efficiency

- The Cisco 1941 Series architecture provides energy savings features that include the following:
- The Cisco 1900 Series offers intelligent power management and allows the customer to control power to the modules based on the time of day. Cisco EnergyWise technology will be supported in the future.
- Services integration and modularity on a single platform performing multiple functions, optimizes raw materials consumption and energy usage.
- Platform flexibility and ongoing development of both hardware and software capabilities lead to a longer product lifecycle, lowering all aspects of the total cost of ownership, including materials and energy use.
- High efficiency power supplies are provided with each platform.

Investment Protection

- The Cisco 1941 Series maximizes investment protection by supporting:
- Reuse of a broad array of existing modules supported on the original Integrated Services Routers provides a lower cost of ownership.
- Rich set of Cisco IOS Software features carried forward from the original Integrated Services Routers and delivered in the universal image.

PRODUCT SPECIFICATIONS OF CISCO ROUTERS 1941 SERIES	
Services and Slot Density	
Embedded hardware-based crypto acceleration (IPSec)	Yes
Total Onboard Gigabit Ethernet 10/100/1000 WAN ports	2
RJ-45-Based Ports	2

SFP-Based Ports	0
SM Slots	0
Double-Wide SM Slots	0
EHWIC Slots	2
Double-wide EHWIC slots (use of a double-wide EHWIC slot will consume two EHWIC slots)	1
ISM Slots	1 (0 on the Cisco 1941W)
Memory (DDR2 Error Correction Code [ECC] ECC DRAM) - Default	512 MB
Memory (DDR2 ECC DRAM) - Maximum	2.0 GB
Compact Flash (external) - Default	slot 0: 256 MB slot 1: none
Compact Flash (external) - Maximum	slot 0: 4 GB slot 1: 4 GB
External USB flash memory slots (Type A)	2
USB Console Port (Type B) (up to 115.2 kbps)	1
Serial Console Port (up to 115.2 kbps)	1
Serial Auxiliary Port (up to 115.2 kbps)	1
Power Supply Options	AC, POE
Redundant Power Supply Support	No
Power Specifications	

AC Input Voltage	100-240 V ~
AC Input Frequency	47-63 Hz
AC Input Current range AC Power Supply (Max) (Amps)	1.5-0.6
AC Input Surge Current	<50 A
Typical Power (No Modules)	35 W
Maximum Power capacity with AC power supply	110 W
Maximum Power capacity with PoE power supply (platform only)	110 W
Maximum PoE device power capacity with PoE power supply	80 W
Physical Specifications	
Dimensions (H x W x D)	3.5 in x 13.5 in x 11.5 in
Rack Height	2 RU
Rack-mount 19in. (48.3 cm) EIA	Included
Wall-mount (refer to installation guide for approved orientation)	Yes
Weight - with AC power supply (no modules)	12 lbs
Weight - with POE power supply (no modules)	12.8 lbs
Maximum Weight - Fully Configured	14 lbs
Airflow	Front to Side
Environmental Specifications	

Operating Condition	
Temperature - 5906 feet (1800 m) max. altitude	0-40°C (32-104°F)
Temperature - 9843 feet (3000 m) max. altitude	0-25°C (32-77°F)
Altitude	3000 m (10000 ft)
Humidity	10 to 85% RH
Acoustic: Sound Pressure (Typ/Max)	26/46 dBA
Acoustic: Sound Power (Typ/Max)	36/55 dBA
Transporation/Storage Condition	
Temperature	-40-70°C (-40-158°F)
Humidity	5 to 95%RH
Altitude	4570m (15000 ft)
Regulatory Compliance	
Safety	UL 60950-1 CAN/CSA C22.2 No. 60950-1 EN 60950-1 AS/NZS 60950-1 IEC 60950-1
EMC	47 CFR, Part 15 ICES-003 Class A EN55022 Class A CISPR22 Class A AS/NZS 3548 Class A VCCI V-3 CNS 13438

	<p>EN 300-386</p> <p>EN 61000 (Immunity)</p> <p>EN 55024, CISPR 24</p> <p>EN50082-1</p>
Telecom	<p>TIA/EIA/IS-968</p> <p>CS-03</p> <p>ANSI T1.101</p> <p>ITU-T G.823, G.824</p> <p>IEEE 802.3</p> <p>RTTE Directive</p>

CISCO ROUTERS 1941 SERIES BASIC ORDERING INFORMATION

Product Number	Product Description
<u>CISCO1941/K9</u>	Cisco 1941 with 2 onboard GE, 2 EHWIC slots, 1 ISM slot, 256MB CF default, 512MB DRAM default, IP Base.
<u>CISCO1941-SEC/K9</u>	Cisco 1941 Security Bundle w/SEC license PAK
<u>CISCO1941-HSEC+/K9</u>	CISCO1941-HSEC+/K9 VPN ISM module HSEC bundles for 1941 ISR platform
<u>CISCO1941W-A/K9</u>	Cisco 1941 Router w/802.11 a/b/g/n FCC Compliant, 2 onboard GE, 2 EHWIC slots, 256MB CF default, 512MB DRAM default, IP Base.
<u>CISCO1941W-P/K9</u>	Cisco 1941 Router w/802.11 a/b/g/n Japan Compliant, 2 onboard GE, 2 EHWIC slots, 256MB CF default, 512MB DRAM default, IP Base.

<u>CISCO1941W-N/K9</u>	Cisco 1941 Router w/802.11 a/b/g/n Australia, New Zealand & Singapore Compliant, 2 onboard GE, 2 EHWIC slots, 256MB CF default, 512MB DRAM default, IP Base.
<u>CISCO1941W-E/K9</u>	Cisco 1941 Router w/ 802.11 a/b/g/n ETSI Compliant WLAN ISM
<u>CISCO1941-2.5G/K9</u>	Cisco 1941 with 2.5G DRAM, 256MB Flash
<u>C1-CISCO1941/K9</u>	Cisco ONE - ISR 1941
CISCO1941W-C/K9	Cisco 1941 Router w/802.11 a/b/g/n China Compliant, 2 onboard GE, 2 EHWIC slots, 256MB CF default, 512MB DRAM default, IP Base.
CISCO1941W-I/K9	Cisco 1941 Router w/802.11 a/b/g/n Israel Compliant, 2 onboard GE, 2 EHWIC slots, 256MB CF default, 512MB DRAM default, IP Base.
CISCO1941W-T/K9	Cisco 1941 Router w/802.11 a/b/g/n Brazil & Taiwan Compliant, 2 onboard GE, 2 EHWIC slots, 256MB CF default, 512MB DRAM default, IP Base.

SOURCES

https://www.cisco.com/c/en/us/products/collateral/routers/1900-series-integrated-services-routers-isr/data_sheet_c78_556319.html