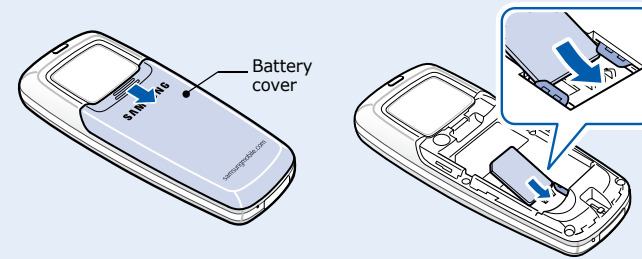


• Depending on the software installed or your service provider or country, some of the descriptions in this guide may not match your phone exactly.
• Depending on your country, your phone and accessories may appear different from the illustrations in this guide.

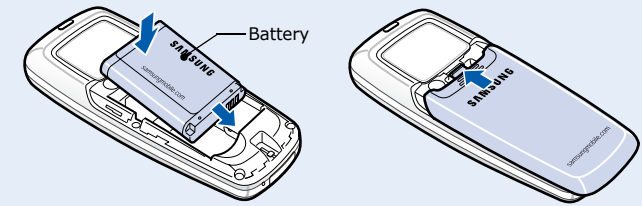
Printed in Korea
Code No.: GH68-11904A
English. (EU) 08/2006. Rev.1.0
World Wide Web
http://www.samsungmobile.com

Installing the battery

1. Remove the battery cover, remove the battery and insert the SIM card.

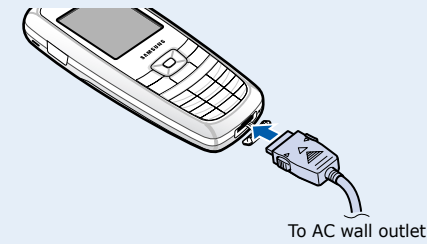


2. Install the battery and replace the cover.

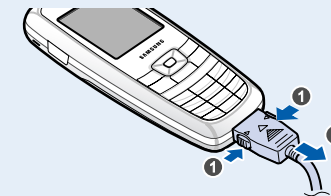


Charging the battery

1. Plug the supplied travel adapter.

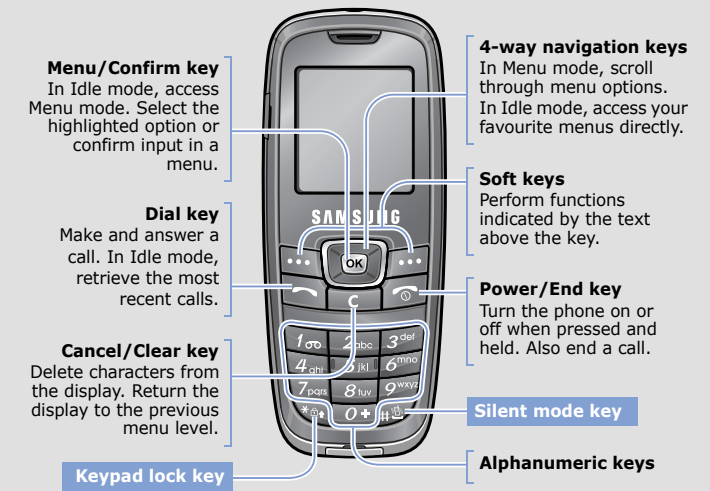


2. When charging is finished, unplug the adapter.



Note: Do not remove the battery from the phone without unplugging the adapter first. Otherwise, the phone may be damaged.

Phone layout and key functions

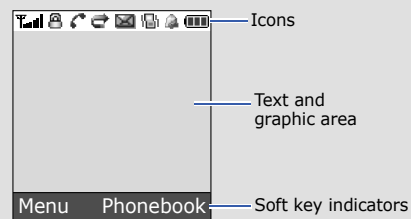


Silent mode Disable all sounds on the phone, when pressed and held **Ⓜ** in Idle mode. To exit, press and hold this key again.

Keypad lock mode Lock the keypad, when pressed and held **Ⓜ**, to ignore accidental key pressing. To unlock, press the left soft key and then this key.

Display

Your phone is in Idle mode when you are not on a call or using a menu. You must be in Idle mode to dial a phone number.



Your phone displays the following status indicators on the top of the screen:

Icon	Description
	Received signal strength
	Key lock mode
	Call in progress
	Out of your service area; you cannot make or receive calls.
	Silent mode or the call ringer set to vibrate
	Call diverting feature active
	Roaming
	New SMS message
	New voicemail
	Alarm set
	Battery power level

Switching on or off the phone

1. Press and hold **Ⓜ** for more than one second to switch on the phone.
2. To switch off the phone, press and hold **Ⓜ** for more than two seconds.

Changing the display language

1. In Idle mode, press the **Menu** soft key.
2. Select **Phone settings** → **Language**.
3. Select a language.

Making a call

1. In Idle mode, enter the area code and phone number, and press **Ⓜ**.
2. To end the call, press **Ⓜ**.

Answering a call

1. When the phone rings, press **Ⓜ** to answer a call.
2. To end the call, press **Ⓜ**.

Adjusting the volume

1. In Idle mode, press the **Menu** soft key.
2. Select **Sound settings** → **Ring volume**.
3. Press **Up** or **Down** to adjust the volume level.
4. Press the **OK** soft key.

While a call is in progress, press **Up** or **Down** to adjust the earpiece volume.

Changing a ringtone for calls

1. In Idle mode, press the **Menu** soft key.
2. Select **Sound settings** → **Ring tone**.
3. Select a ringtone.

Redialling recent numbers

1. In Idle mode, press **Ⓜ**.
2. Press **Up** or **Down** to scroll to the number you want.
3. Press **Ⓜ** to dial the number.

Locking the phone

1. In Idle mode, press the **Menu** soft key.
2. Select **Phone settings** → **Security** → **Change password**.
3. Enter the default password, **00000000**, and press the **OK** soft key.
4. Enter a new 4- to 8-digit password and press the **OK** soft key.
5. Enter the new password again and press the **OK** soft key.
6. Select **Phone lock** → **Enable**.
7. Enter the password and press the **OK** soft key.

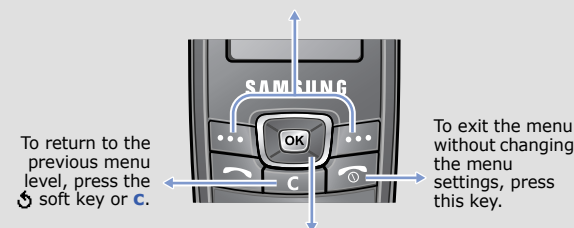
Locking the SIM card

1. In Idle mode, press the **Menu** soft key.
2. Select **Phone settings** → **Security** → **PIN check** → **Enable**.
3. Enter a supplied 4- to 8-digit PIN code and press the **OK** soft key.
4. Select **Change PIN**.
5. Enter the current PIN code and press the **OK** soft key.
6. Enter a new 4- to 8-digit PIN code and press the **OK** soft key.
7. Enter the new code again and press the **OK** soft key.

Using the menus

In Idle mode, press the **Menu** soft key or **Ⓜ** to enter the main menu.

Labels at the bottom corners of the display show the current soft key functions. Press the left soft key (**Ⓜ**) or right soft key (**Ⓜ**) to perform the function indicated.



Use the 4-way navigation keys (**Ⓜ**, **Ⓜ**, **Ⓜ**, **Ⓜ**) as shortcuts to access your favourite menus.

1. In Idle mode, press the **Menu** soft key.
2. Select **Phone settings** → **Short cut**.
3. Select a key.
4. Select a menu to be assigned to the key.

To select and modify menu or feature:

1. In Idle mode, press the **Menu** soft key.
2. Press the Navigation keys to reach the desired menu and then press the **Select** soft key or **Ⓜ**.
3. If the menu contains any submenu, locate the one you want by pressing the Navigation keys. Press the **Select** soft key or **Ⓜ** to enter the submenu.
If the selected menu contains additional submenu, repeat this step.
4. Press the Navigation keys to find the setting of your choice.
5. Press the **Select** soft key or **Ⓜ** to confirm your chosen setting.

Shortcut numbers

You can quickly access the menu you want by using shortcut numbers. The shortcut number displays in front of the menu name in Menu mode.

Menu map

1. Call records 1.1 Missed calls 1.2 Received calls 1.3 Dialed calls 1.4 Delete all 1.5 Call time 1.6 Call cost*	3. Organiser (continued) 3.5 To do list 3.6 Voice memo 3.7 Currency exchange	7. Display settings 7.1 Wallpaper 7.2 Auto key lock 7.3 Contrast 7.4 Brightness 7.5 Backlight
2. Phonebook 2.1 Search 2.2 New entry 2.3 Group search 2.4 Edit group 2.5 Speed dial 2.6 Delete all 2.7 Memory status 2.8 SDN*	4. SIM AT 5. Messages 5.1 Inbox 5.2 Outbox 5.3 Write new 5.4 Templates 5.5 Settings 5.6 Delete all 5.7 Memory status 5.8 Voice mail 5.9 Broadcast	8. Sound settings 8.1 Ring tone 8.2 Ring volume 8.3 Alert type 8.4 Keypad tone 8.5 Keypad volume 8.6 Message tone 8.7 Extra tones
3. Organiser 3.1 Alarm 3.2 Calendar 3.3 Time & Date 3.4 Calculator	6. Network services 6.1 Call diverting 6.2 Call barring 6.3 Call waiting 6.4 Network selection 6.5 Caller ID 6.6 Closed user group	9. Phone settings 9.1 Greeting message 9.2 Own number 9.3 Language 9.4 Security 9.5 Extra settings 9.6 Short cut 9.7 Reset settings

* Shows only if supported by your SIM card.

Entering text

Changing the text input mode

In a text input field, press the right soft key until the input mode indicator you want appears:

- T9** : T9 mode
- A** : ABC mode
- 1** : Number mode
- None: Symbol mode

T9 (English) mode

- Press keys **2** to **9** to start entering a word. Press each key only once for one letter.
The word you are entering appears on the display. It may change with each keypress.
Finish entering the word before editing or deleting any keystrokes.
Example: To enter "Hello" in T9 mode, press **4, 3, 5, 5,** and **6**.
If the word is not correct, press **0** to display alternative word choices for the keys that you have pressed.
- When the word displays correctly, insert a space after it by pressing **#**.

Feature	Description	Select
Change properties of a caller group	Select a ringtone for incoming calls and messages from members of a group. Also change the name of each group.	Menu > Phonebook > Edit group
Speed dial	Assign speed dial numbers (2 to 9) to eight of your most frequently called numbers.	Menu > Phonebook > Speed dial
Delete Phonebook	Delete all Phonebook entries stored in the phone's memory or on the SIM card.	Menu > Phonebook > Delete all
Phonebook memory status	View the total number of Phonebook entries in the phone's memory or on the SIM card.	Menu > Phonebook > Memory status
SDN (Service Dialling Numbers)	Access the list of service numbers assigned by service provider.	Menu > Phonebook > SDN
Alarm	Set an alarm to ring at a specific time.	Menu > Organiser > Alarm
Scheduler	Keep track of daily or monthly schedules.	Menu > Organiser > Calendar
Time and date	Set time and date manually.	Menu > Organiser > Time & Date

Feature	Description	Select
Display language	Select a language to be used for the text display.	Menu > Phone settings > Language
Security	Protect the phone against unauthorised use.	Menu > Phone settings > Security
Extra settings	Turn the automatic redialling or answering feature on or off.	Menu > Phone settings > Extra settings
Menu shortcuts	Set the Navigation keys as shortcuts to access your favourite menus directly.	Menu > Phone settings > Short cut
Reset the phone	Reset the phone to the factory default settings.	Menu > Phone settings > Reset settings

Important safety precautions

Read these guidelines before using your wireless phone. Failure to comply with them may be dangerous or illegal.

Drive safely at all times

Do not use a hand-held phone while driving; park the vehicle first.

ABC mode

Press the keys labelled with the letter you want:

- once for the first letter
- twice for the second letter
- and so on.

For example, you press **2** three times to enter the letter "C" and **5** two times to enter the "K."

Number mode

Press the keys corresponding to the digits you want.

Symbol mode

Press the number keys corresponding to the symbol you want. You can press **Up** or **Down** to display more symbols.

Tips for entering text

- To move the cursor, press the Navigation keys.
- To delete letters one by one, press **C**. To delete all of the letters, press and hold **C**.
- To insert a space between letters, press **#**.
- To change case in T9 or ABC mode, press *****.
- To enter punctuation marks in T9 or ABC mode, press **1**.

Feature	Description	Select
Calculator	Perform basic arithmetic functions.	Menu > Organiser > Calculator
Task list	Create a list of tasks and assign a deadline to each task.	Menu > Organiser > To do list
Voice memo	Record voice memos.	Menu > Organiser > Voice memo
Currency converter	Do currency conversions.	Menu > Organiser > Currency exchange
Use the SIM service	Use a variety of additional services offered by your service provider.	Menu > SIM AT
Read message	Read received, sent, or saved messages.	Menu > Messages > Inbox, Outbox
Send message	Create a text message and send it to other mobile phones.	Menu > Messages > Write new
Message templates	Preset frequently used messages stored as templates.	Menu > Messages > Templates
Messaging options	Set options for using messaging features.	Menu > Messages > Settings

Switching off when refuelling

Do not use the phone at a refuelling point (service station) or near fuels or chemicals.

Switching off in an aircraft

Wireless phones can cause interference. Using them in an aircraft is both illegal and dangerous.

Switching off near all medical equipment

Hospitals and health care facilities may be using equipment that could be sensitive to external RF energy. Follow any regulations or rules in force.

Interference

All wireless phones may be subject to interference, which could affect their performance.

Special regulations

Follow any special regulations in force in any area and always switch off your phone whenever it is forbidden to use it.


Water resistance

Your phone is not water-resistant. Keep it dry.

Sensible use

Use only in the normal position (held to the ear). Avoid unnecessary contact with the antenna when the phone is switched on.

Emergency calls

Key in the emergency number for your present location, then press . Do not end the call until given permission to do so.

Small children and your phone

Keep the phone and all its parts including accessories out of reach of small children.

Accessories and batteries

Use only Samsung-approved accessories and batteries. Use of any unauthorised accessories could damage your phone and may be dangerous.

Sending a message

- In Idle mode, press the **Menu** soft key.
- Select **Messages** → **Write new**.
- Enter the message text.
To change case, press *****.
- Press the **Options** soft key and add items using the following options:
 - Add templates**: retrieve a text template.
 - Add phonebook**: retrieve a Phonebook entry.
- Press the **Options** soft key and select **Save and send**, **Send only** or **Save only**.
- If you selected **Save and send** or **Save only**, select a memory location.
- Enter a destination number and press the **OK** soft key.


Feature	Description	Select
Delete messages	Delete messages in each message box.	Menu > Messages > Delete all
Message memory status	Check the memory status for messages in each memory type.	Menu > Messages > Memory status
Voice mail	Receive and listen to voicemails stored on the network.	Menu > Messages > Voice mail
CB message	Change the settings for the service and access CB messages.	Menu > Messages > Broadcast
Network services	Access network services offered by your service provider.	Menu > Network services
Display settings	Change settings for the display and backlight.	Menu > Display settings
Ring tone	Select a ringtone for incoming calls.	Menu > Sound settings > Ring tone
Ringtone volume	Adjust the ringtone volume.	Menu > Sound settings > Ring volume

Use only Samsung-approved batteries and recharge your battery only with Samsung-approved chargers.

Qualified service

Only qualified service personnel may repair your phone.

CAUTION	Risk of explosion if a battery is replaced by an incorrect type. Dispose used batteries according to the instructions.
----------------	--

	At very high volume, prolonged listening to a headset can damage your hearing.
---	--

SAR information

Your wireless phone is a radio transmitter and receiver. It is designed and manufactured not to exceed the emission limits for exposure to radio frequency (RF) energy set by the European Union (EU) Council. These limits are part of comprehensive guidelines and establish permitted levels of RF energy for the general population. The guidelines are based on the safety standards that were developed by independent scientific organizations through periodic and through evaluation of scientific studies.

The standards include a substantial safety margin designed to assure the safety of all persons, regardless of age and health.

The exposure standard for wireless phones employs a unit of measurement known as Specific Absorption Rate (SAR). The SAR limit set by the EU Council is 2.0 W/kg. The highest SAR value for this model phone was 0.977W/kg.

Quick feature reference

This section provides brief explanations of features on your phone.

Feature	Description	Select
View recent calls	View and dial the most recent calls you have dialled, received, or missed.	Menu > Call records > Missed calls, Received calls, Dialled calls
Delete recent calls	Delete the contents of each of the three call records, or all numbers at once.	Menu > Call records > Delete all
Call time display	View the duration and number of recent calls you have dialled and received. Also reset the time counter.	Menu > Call records > Call time
Call cost display	View the cost of your calls.	Menu > Call records > Call cost
Find an entry	Search for numbers in Phonebook.	Menu > Phonebook > Search
Add a new entry	Add a new entry to Phonebook.	Menu > Phonebook > New entry
Search group	Search entries in Phonebook in caller groups.	Menu > Phonebook > Group search

Feature	Description	Select
Alert type	Set how you are informed of incoming calls.	Menu > Sound settings > Alert type
Keypad tone	Select the sound that will occur when a key is pressed.	Menu > Sound settings > Keypad tone
Keypad volume	Adjust the keypad volume.	Menu > Sound settings > Keypad volume
Message tone	Change the alert sound settings for incoming SMS and CB messages.	Menu > Sound settings > Message tone
Extra tones	Set additional tones for the phone.	Menu > Sound settings > Extra tones
Greeting message	Enter the greeting to be displayed when the phone is switched on.	Menu > Phone settings > Greeting message
Check own phone numbers	Check your phone numbers or assign a name to them.	Menu > Phone settings > Own number

Declaration of Conformity (R&TTE)

Model name: SGH-C120 (GSM 900/1800)

Manufactured at:

Samsung Electronics Co., Ltd, 94-1, Imsoo-Dong, Gumi City, Kyung-Buk, Korea, 730-350

Safety : EN 60950-1:2001

EMC : EN 301 489-01 v1.4.1 (2002-08)

: EN 301 489-07 v1.2.1 (2002-08)

SAR : EN 50360:2001

: EN 50361:2001

Network: EN 301 511 v9.0.2 (2003-03)

The conformity assessment procedure referred to in Article 10 and detailed in Annex[IV] of Directive 1999/5/EC has been followed with the involvement of the following Notified Body(ies):

BABT, Balfour House, Churchfield Road, Walton-on-Thames, Surrey, KT12 2TD, UK
Identification mark: 0168

CE 0168

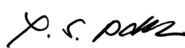
The technical documentation kept at:

Samsung Electronics QA Lab.

which will be made available upon request.

Place and date of issue:

Samsung Electronics Euro QA Lab.
Blackbushe Business Park, Saxony Way,
Yateley, Hampshire, GU46 6GG, UK
2005. 08. 31



Yong-Sang Park/S.Manager