

Monday, March 9, 1992 9&E

taste buds
chef Larry Janes

Syrup harvest begins

All it took was the 'ol groundhog crawling out of his hole and seeing his shadow, forecasting six more weeks of winter.

MEANWHILE, NORTH American maple syrup makers are getting ready to begin "suckin' the sap" and turning out pure maple syrup faster than ever to meet the demand. Collecting of the sap commences in the spring when warm days begin to follow cool nights, causing the sap of the sugar maple to flow. During the winter, some of the starch that the tree made the previous summer and stored in its roots is converted to sugar.

PRIMARILY, THE sap contains four to 10 percent sugar. Collected sap is boiled to concentrate the sugar and produce the characteristic flavor. Maple syrup is esteemed for its sweet taste and "maple" flavor. Interestingly, the maple flavor of the syrup is not present in the sap, but develops during the boiling.

Harvesting sap from the "sugar bush" — the strands of maple trees — is a rather picturesque operation in many places. Quebec is the world's leading maple syrup producer, converting more than 60 million gallons of sap into more than 30 million gallons of syrup yearly.

THE UNITED STATES' production will be lucky to tap off two million gallons, which will be made by small independent producers and sold as "tourist items."

To collect the running sap, holes are drilled into the tree about two to three inches deep, about three feet above the ground. The number of holes depends on the size of the tree — larger trees sport four to five holes.

Into each hole, a metal spout is fitted and a collection pail is hung below the spout. Each day, the accumulation of sap is collected from the pails, poured into a larger tank, and hauled by sled or wagon to the sugarhouse.

A more modern method of collecting the sap involves a system of plastic pipelines which transports the sap from a hole tapped into a tree to the sugarhouse. Regardless of the method of collection, a good maple tree will yield 15 to 40 gallons of sap in a single season.

Procession occurs in the sugarhouse. It is here that the sap is strained and then placed in shallow pans (evaporators) over wood, oil or gas fires. As the sap boils, the water evaporates.

When the sugar concentration reaches 66.5 percent, it is drawn off, filtered and bottled as maple syrup. Maple sugar is produced by further boiling and evaporation of most of the water.

One gallon of syrup yields about eight pounds of sugar. An old-fashioned treat enjoyed by those making maple syrup is called "jack wax," a taffy-like confection formed by pouring the hot syrup into a mound of clean snow. The syrup hardens into a stringy treat and is usually made with the first "draw" of the syrup.

A SINGULAR harbinger of spring, maple syrup is also a unique cooking ingredient. It's gift of unrefined sweetness and rich flavor in both liquid and sugar forms, turns hams and potatoes into a regal dish, infusing bread and cake with character. It even tastes great from the can or bottle when poured over ice cream.

If you think you have to venture to Quebec or New England to observe the making of real maple syrup, you might be surprised to find small orchards within driving distance in Troy and Bloomfield Hills, (see related story).

See recipes inside.

Maple syrup makers sap-happy

By Geri Rinschler
special writer

THE SKUNK cabbage is blooming, and the days are getting warmer. The nights, hopefully, will stay just below freezing.

ASK SUSAN Raymer, a naturalist at the Lloyd A. Stage, outdoor education center in Troy, and she'll explain "that these are all indications the maple trees are ready to be tapped."

She, along with other naturalists and maple sugar makers in southern Michigan, are getting ready to collect the sap to make maple syrup, sugar, and cream.

A TRULY authentic North American luxury, maple syrup is usually collected in Michigan in March during what is described as the first thaw and continues for four to five weeks until the first leaf buds appear.

"At this point, the sap will carry a substance which will give the syrup a harsh flavor," said Raymer.

As the outdoor education center begins its 10th annual Maple Syrup Time, the public is invited to watch the process from tree to syrup, as well as taste the final product, (see related story inside).

PURE MAPLE syrup is made in the northeastern United States, and southeastern Canada as it has been for over 100 years.

The equipment in most places has been updated except in Dearborn at Greenfield Village where sap is gathered as it would have been in the 1880s at the historic Firestone farmhouse.

"The Village workers will go out dressed in period costumes in horse-drawn wagons and pour the sap into wooden barrels," said Margaret Johnson, the museum's regional media specialist.

At the Village, they only use traditional methods and tools, she said. The metal taps or spiles used were reproduced in the Village for the process.

Beginning Wednesday, March 18, the sap will be collected, poured into an apparatus at the farm for skimming the residue, then brought into the farmhouse for cooking down into syrup.

The finished product is then poured into canning jars and stored to be used in cooking throughout the year.

The naturalists at the Cranbrook Institute of Science in Bloomfield Hills have been making maple syrup and maple sugar for 19 years.



Maura Lobos, a naturalist at the Cranbrook Institute of Science in Bloomfield Hills, collects sap to make maple syrup. The institute's annual Maple Syrup Festival runs Saturdays and Sundays through March 22.

IF YOU'D like to learn how to identify the various maple trees, and hike through the sugar bush (the group of trees being tapped as a crop for producing syrup), visit the Cranbrook Institute of Science during Maple Syrup Festival, Saturdays and Sundays through March 22.

Naturalists will discuss the history of syrup making and demonstrate the process.

"About 100 taps are set up in the sugar bush," said Maura Lobos, naturalist. Besides sugar maples, they will tap a few Norway Maples, Black Walnut and Box Elder trees.

"The weather plays an important

role in syrup making," said Lobos. "The sugar content is generally the highest during the first run."

The early syrups are the lightest in color because of the high sugar content, she added. This is a labor intensive crop to harvest and process. On the average, 40 gallons of sap will yield only one gallon of syrup.

NOW, IF you're thinking about trying this at home, there are a few things you should know before you begin. Although any maple tree can be tapped, you'll need to tap at least four to five trees to collect enough syrup for pancakes.

"About one gallon of collected sap will yield about ¼ cup of maple syrup," said Raymer. "Cooking down the sap will take several hours, and the sap must be cooked to 7 degrees past the boiling point using a candy thermometer."

"When it reaches the point of syrup, it must then be removed from the heat immediately. If the syrup is left unattended for a moment, it can easily cause a fire."

If you're still game, metal spiles for tapping trees and a booklet on how to make maple syrup are available for purchase in the gift shop at the Cranbrook Institute of Science

along with maple syrup and maple candy.

The delicate flavor of maple syrup enhances a variety of recipes which require a sweetener such as muffins, custards and cakes.

You can use syrup in place of honey to glaze a ham, or drizzle it over apples in place of brown sugar before baking.

But when I asked the naturalists interviewed for their favorite maple syrup recipe, they all agreed, "over ice cream."

See recipes and places to learn about maple syrup making inside.

Meal ideal for entertaining

Members of the Cranbrook House and Garden Auxiliary are thrilled and elated with the success of their first cookbook "Cranbrook Reflections."

Betsy Brethen Leafing through this beautiful book, it comes as no surprise that it was the third place winner of the National Community Cookbook Award in the 1991 Tabasco Community Cookbook Awards Competition.

THANKS IN part to Balthazar Korab's magnificent color photographs of Cranbrook House and its surrounding gardens, the book is visually appealing and filled with delicious recipes that are bound to whet your appetite as well as enhance your culinary repertoire.

Included in the hard cover cookbook are recipes for two of the auxiliary's most popular gift items at their twice yearly plant sales, Michigan Navy Bean Soup Mix and Fragrant Tussy Mussy Potpourri. As a special reminder, be sure to mark your calendar for their upcoming spring plant sale May 13 and 14.

This week's Winner Dinner, submitted by Joan West, consists of recipes taken from the cookbook. Selected with ease and elegance in mind, her menu for marinated pork loin, roasted rosemary potato slices, and Bloomfield Winter Salad, achieves both objectives, and is ideal for entertaining or a special dinner.

West, a resident of Orchard Lake for 21 years, is married and the mother of four grown children. She worked at Standard Federal Bank for 14 years as a savings counselor and retired two years ago. Now, her many activities keep her busier than ever.

A PAST director of the Christ Church Cranbrook Altar Guild, West is currently treasurer of the organization. She previously worked as a volunteer at Beaumont Hospital, and



Joan West presents marinated pork loin, roasted rosemary potato slices, and Bloomfield winter salad, elegant dishes selected from "Cranbrook Reflections."

and has held many other positions within this volunteer organization.

"CRANBROOK REFLECTIONS" is available locally at Hudsons, bookstores and specialty shops. For more information, call the Cranbrook House and Gardens Auxiliary, 643-3149.

Submit recipes to be considered for publication to, Winner Dinner, P.O. Box 3503, Birmingham, 48012.

WINNER DINNER

Recipes

MARINATED PORK LOIN (serves 4)

- 2 pounds pork loin, trimmed
 - *Marinade*
 - 2 large cloves of garlic, minced
 - 1 teaspoon coarse (kosher) salt
 - 1 tablespoon thyme
 - 1 tablespoon basil
 - 2 teaspoons sugar
 - parsley
 - cayenne pepper
 - 1 tablespoon Dijon mustard
 - 1 tablespoon oil
 - 1 teaspoon vinegar
- Mix all the marinade ingredients until well blended. Spread over pork loin in a nonaluminum pan. Cover with plastic wrap. Refrigerate 12 hours to 2 days. Return to room temperature before baking. Preheat oven to 325 degrees. Roast until internal temperature measures 150 degrees, approximately 1¼ hours, or 160 degrees for no pinkness. Transfer to cutting board, cover with foil, and let rest 15 minutes before slicing. Deglaze roasting pan with one-half cup water. Bring to boil, thicken with flour and water mixture.

ROASTED ROSEMARY POTATO SLICES (serves 4)

- 5 tablespoons unsalted butter, melted
 - 4 russet (baking) potatoes (about 1¼ pounds), scrubbed
 - 1 teaspoon coarse (kosher) salt
 - 1 teaspoon crumbled dried rosemary (or 2 teaspoons finely chopped fresh)
 - freshly ground pepper to taste
- Preheat oven to 425 degrees. Pour half the butter into an 8-inch baking pan, making sure it covers the entire bottom. Cut the potatoes into one-quarter-inch-thick slices. In the pan, layer the potatoes in separate rows,

overlapping the slices slightly. Sprinkle with salt, rosemary, and pepper. Drizzle the remaining butter over the potatoes. Bake in the middle of the oven, turning each row once with a long thin spatula, for 45 minutes to 1 hour, or until they are crisp and golden.

BLOOMFIELD WINTER SALAD (serves 6)

- *Dressing:*
 - ¼ cup sugar
 - 1 teaspoon salt
 - 1 teaspoon aprika
 - 1 teaspoon c-v mustard
 - ¼ teaspoon pepper
 - ¼ cup fresh lemon juice
 - 1 teaspoon celery seed
 - 1 tablespoon diced onion
 - 1 large or 2 medium cloves of garlic
 - 2 tablespoons honey
 - ¼ cup light vegetable oil
- Combine all ingredients in a blender and mix until smooth. Makes 1½ cups of salad dressing. Extra dressing, stored in the refrigerator, keeps for weeks.
- *Salad:*
 - 1 head romaine lettuce, washed, dried, torn into pieces
 - 2 oranges, peeled and cut into sections without pith
 - 1 grapefruit, peeled and cut into sections without pith
 - garlic salt, to taste
 - salt and pepper, to taste
 - 1 red onion, peeled and thinly sliced
 - 1 ripe avocado, peeled and sliced
- Toss together romaine lettuce, oranges, and grapefruit. Sprinkle salad with a little garlic salt, salt and pepper. Toss with salad dressing. Arrange red onion rings and avocado wedges on top of salad.

Maple syrup makes desserts, snacks special

- See related story on Taste front... MAPLE SYRUP MUFFINS... MAPLE POPCORN NUT CANDY... MAPLE BARS

Where to watch sap tappers

You don't have to travel far to get a firsthand look at maple syrup making... THE LLOYD A. Stage Outdoor Education Center... CRANBROOK INSTITUTE of Science's Maple Syrup Festival...

Savor the flavor of syrup

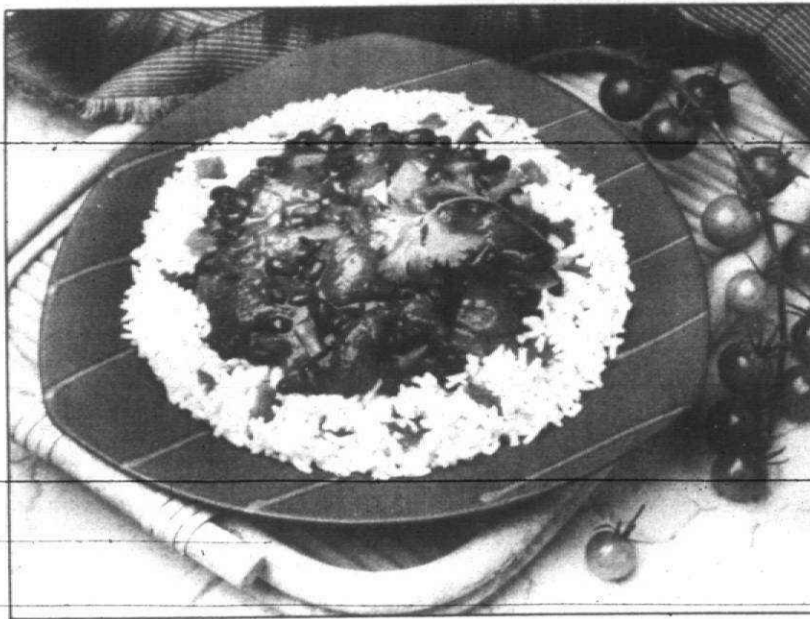
See Larry Jones' taste buds come on Taste front... syrup into the yolks very gradually, then add the mixture to the remaining syrup... MAPLE SYRUP MUFFINS... MAPLE SYRUP Mousse... MAPLE SAUSAGE AND APPLES...

Creamy garden soup low in fat

AP - Gorgeous green dapples this creamy appetizer soup, thanks to asparagus or broccoli, herbs, green onion and riccinoli... GARDEN SOUP... nutrition information per serving...

Meatless rice dishes quick, easy, healthy

Looking for great-tasting, light and healthy meatless meals that are quick and easy to serve? Look to rice to point the way... MEXI-BEANS AND RICE... ITALIAN VEGETABLE RICE PIZZA... Nutrition Information Per Serving...



Mexi-beans and rice brings the rich, full flavors of Mexico to the table without the high fat content Mexican foods so often have...

cooking calendar

SCHOOLCRAFT COLLEGE... KITCHEN GLAMOR... registration for Wines of the West Coast and Great Lakes... registration for wine tasting... registration for wine tasting...

The FRESH CHOICE 477-3100 19330 Middlebelt Livonia Between 7 & 8 Mile Next to Kids-R-Us Across from Sears-Livonia Mall

Chicken fajitas tasty dish

AP - Fajitas are a Mexican or Tex-Mex dish traditionally made with strips of thin, marinated beef cooked and wrapped in a flour tortilla with vegetables, cheese and sour cream... CHEESY CHICKEN FAJITA... CELERY... TURKEY BREASTS...

Meat and poultry selection: U.S.D.A. Corn Fed BONELESS TOP ROUND STEAK or SWISS STEAK \$2.39 lb., ROLLED ROAST \$1.99 lb., ROUND STEAK \$1.58 lb., PINK GRAPEFRUIT 4 for \$1.00, KING CRAB LEGS \$6.95 lb., FRESH DRESSED SMELT \$1.99 lb., ASPARAGUS 88¢ lb., BONELESS SKINLESS PACIFIC WHITEFISH \$1.99 lb., BONELESS PORK LOINS Rib \$1.89 lb., Loin \$1.99 lb., BONELESS SKINLESS PACIFIC WHITEFISH \$1.99 lb., FRESH DRESSED SMELT \$1.99 lb., ASPARAGUS 88¢ lb., BONELESS SKINLESS PACIFIC WHITEFISH \$1.99 lb., FRESH DRESSED SMELT \$1.99 lb., ASPARAGUS 88¢ lb., BONELESS SKINLESS PACIFIC WHITEFISH \$1.99 lb., FRESH DRESSED SMELT \$1.99 lb., ASPARAGUS 88¢ lb.

Tips for reducing some of the fat in your diet

MARCH IS national nutrition month, a good time to cut some of the fat in your diet... tidbits Keely Wygonik... EGGS ARE graded by the U.S. Department of Agriculture... TURKEY MARSALA... BAKING, scrambling, and general cooking... Nutrition Information Per Serving...

Corned beef, sauerkraut team up

AP - Just in time for St. Patrick's Day, corned beef teams with cabbage, only this year "cabbage" means sauerkraut... CORNED BEEF AND SAUERKRAUT WEDGES... BREAKFAST sweet-to-eat... Breakfast treats... Cut crispbread into quarters... Spread 1 rounded tablespoon of the strawberry mixture on another quarter...

BOB'S OF CANTON 8611 N. Lilley Road - Canton, MI 48187 - 454-0111... HAMBURGER Made From Fresh GROUND SIRLOIN \$1.77 lb., BEEF or PORK STEW \$1.99 lb., U.S.D.A. Choice Beef BONELESS ENGLISH CUT ROAST \$1.77 lb., U.S.D.A. Choice Beef Steak Sale BONE-IN SIRLOIN STEAK \$2.88 lb., PORTERHOUSE or T-BONE STEAKS \$3.69 lb., CORNED BEEF \$1.88 lb., CABBAGE 25¢ lb., U.S.D.A. Choice Beef BONELESS ENGLISH CUT ROAST \$1.77 lb., U.S.D.A. Choice Beef Steak Sale BONE-IN SIRLOIN STEAK \$2.88 lb., PORTERHOUSE or T-BONE STEAKS \$3.69 lb., CORNED BEEF \$1.88 lb., CABBAGE 25¢ lb., U.S.D.A. Choice Beef BONELESS ENGLISH CUT ROAST \$1.77 lb., U.S.D.A. Choice Beef Steak Sale BONE-IN SIRLOIN STEAK \$2.88 lb., PORTERHOUSE or T-BONE STEAKS \$3.69 lb., CORNED BEEF \$1.88 lb., CABBAGE 25¢ lb.

404 Houses To Rent
DETROIT - 2 & 3 bedroom homes...
BLOOMFIELD - 3 bedroom home...
WILSONVILLE - 3 bedroom home...

404 Houses To Rent
ROCHESTER - DOWNTOWN...
BLOOMFIELD - 3 bedroom home...
WILSONVILLE - 3 bedroom home...

406 Property
Management
ASSENTIVE OWNER...
Income Property Mgmt...
Farmington Hills 737-4002

410 Flats
FLAT FIVE - large lower flat, 2 bed...
FLAT FOUR - 2 bed, 1 bath, 1 kitchen...
FLAT THREE - 2 bed, 1 bath, 1 kitchen...

412 Townhouses-
Condos For Rent
BLOOMFIELD Hills, luxury condo...
2 units. One available immediately...
RENT BEATS SPECIAL

415 Vacation Rentals
BEST NORTH EAST AREA...
Ontario Lake - Gaffney, Mt. Leake...
Large 2 1/2 acre lot, 1000 sq ft house...

420 Rooms For Rent
LIVONIA - Emsworthburg, Room/Bath...
1/2 bath, 1 kitchen, 1 living room...
Call: 313-486-1911

421 Living Quarters
To Share
SHARE SHAR'S 3 BEDROOM...
Large home, 3 bedrooms, 2 1/2 baths...
Call: 313-486-1911

422 Townhouses-
Condos For Rent
RENOVATED 3 bedroom townhouse...
with hardwood floors, stainless steel...
Call: 313-486-1911

424 Rooms For Rent
WESTLAND - 2 bedroom townhouse...
with hardwood floors, stainless steel...
Call: 313-486-1911

500 Help Wanted
SPRING/SUMMER WORK
Secure your Summer position...
Call: 313-486-1911

500 Help Wanted
Act Now
GENERAL LABOR
Immediate openings...
Call: 313-486-1911

500 Help Wanted
ATTENTION
LIGHT INDUSTRIAL
Manufacturing positions...
Call: 313-486-1911

500 Help Wanted
ATTENTION
MICHIGAN GRAND OPENING
Retail positions...
Call: 313-486-1911

500 Help Wanted
ATTENTION
REDFORD RESIDENTS
Retail positions...
Call: 313-486-1911

500 Help Wanted
ATTENTION
REDFORD RESIDENTS
Retail positions...
Call: 313-486-1911

500 Help Wanted
ATTENTION
REDFORD RESIDENTS
Retail positions...
Call: 313-486-1911

500 Help Wanted
ATTENTION
REDFORD RESIDENTS
Retail positions...
Call: 313-486-1911

500 Help Wanted
ATTENTION
REDFORD RESIDENTS
Retail positions...
Call: 313-486-1911

500 Help Wanted
ATTENTION
REDFORD RESIDENTS
Retail positions...
Call: 313-486-1911

500 Help Wanted
ATTENTION
REDFORD RESIDENTS
Retail positions...
Call: 313-486-1911

500 Help Wanted
ATTENTION
REDFORD RESIDENTS
Retail positions...
Call: 313-486-1911

500 Help Wanted
ATTENTION
REDFORD RESIDENTS
Retail positions...
Call: 313-486-1911

500 Help Wanted
ATTENTION
REDFORD RESIDENTS
Retail positions...
Call: 313-486-1911

500 Help Wanted
ATTENTION
REDFORD RESIDENTS
Retail positions...
Call: 313-486-1911

500 Help Wanted
ATTENTION
REDFORD RESIDENTS
Retail positions...
Call: 313-486-1911

500 Help Wanted
ATTENTION
REDFORD RESIDENTS
Retail positions...
Call: 313-486-1911

500 Help Wanted
ATTENTION
REDFORD RESIDENTS
Retail positions...
Call: 313-486-1911

500 Help Wanted
ATTENTION
REDFORD RESIDENTS
Retail positions...
Call: 313-486-1911

500 Help Wanted
ATTENTION
REDFORD RESIDENTS
Retail positions...
Call: 313-486-1911

HELP WANTED

500 Help Wanted

BRANCH MANAGER
Seeking an individual with strong sales and marketing background to manage branch office. Position offers excellent growth potential. Call for details.

500 Help Wanted

QUALITY ASSURANCE ANALYST
Seeking an individual with strong analytical and communication skills. Position offers excellent growth potential. Call for details.

500 Help Wanted

MORTGAGE PROCESSOR
Seeking an individual with strong organizational and communication skills. Position offers excellent growth potential. Call for details.

500 Help Wanted

PHYSICIAN PROVIDER REPRESENTATIVE
Seeking an individual with strong sales and marketing background. Position offers excellent growth potential. Call for details.

500 Help Wanted

RECEPTIONIST
Seeking an individual with strong communication and organizational skills. Position offers excellent growth potential. Call for details.

500 Help Wanted

TELEMARKETER
Seeking an individual with strong sales and marketing background. Position offers excellent growth potential. Call for details.

500 Help Wanted

WAREHOUSE/LOGISTICS
Seeking an individual with strong organizational and communication skills. Position offers excellent growth potential. Call for details.

500 Help Wanted

TELEMARKETING
Seeking an individual with strong sales and marketing background. Position offers excellent growth potential. Call for details.

HELP WANTED

DEADLINES: 4 P.M. TUESDAY FOR THURSDAY EDITION / 4 P.M. FRIDAY FOR MONDAY EDITION TO PLACE YOUR AD CALL 991-9990

3 Accounting Services

BOOKKEEPING/ACCOUNTING
Full service accounting, payroll, tax preparation. Call for details.

33 Bldg. & Remodeling

ADDITIONAL CONSTRUCTION
Basement finishing, roof replacement, siding. Call for details.

40 Cabinetry & Formica

MASTERBUILT KITCHENS
Custom cabinets, countertops, sinks. Call for details.

66 Electrical

J.C. PRICE ELECTRIC
Residential and commercial electrical work. Call for details.

102 Handyman Male/Female

MISC. REPAIR & REPLACEMENT
Painting, plumbing, electrical. Call for details.

130 Lawn & Garden

ROTILLATING
Lawn care, fertilization, mulching. Call for details.

165 Painting/Decorating

BRUSH PAINTING CO.
Interior and exterior painting. Call for details.

200 Plastering

CALL SAWS PLUMBING
Plastering, masonry work. Call for details.

245 Sewing Machine Repair

SEWING MACHINE REPAIR
All makes and models. Call for details.

261 Television, VCR Radio, CB

TELEVISION SERVICE
Repair, installation, parts. Call for details.

269 Tire

TYRE SERVICE
Tire repair, balancing, alignment. Call for details.

272 Tree Service

AAA NATIONAL TREE & STUMP REMOVAL
Tree care, stump removal. Call for details.

273 Pool Service

POOL SERVICE
Pool cleaning, maintenance. Call for details.

277 Upholstery

UPHOLSTERY
Furniture reupholstery. Call for details.

284 Wallpapering

OUR WORK GUARANTEED
Wallpapering, painting. Call for details.

287 Windows

WINDOW REPAIR
Window replacement, repair. Call for details.

324 Siding, S/W

SIDING SERVICE
Siding installation, repair. Call for details.

325 Siding, S/W

SIDING SERVICE
Siding installation, repair. Call for details.

326 Siding, S/W

SIDING SERVICE
Siding installation, repair. Call for details.

591-2300, ext. 2153 Congratulations!

BUILDERS SHOW TICKET WINNERS

John & Marian St. Clair
31444 Alvin Garden City 48135

Will Chlo
1907 Hills Birmingham 48009

Katy Gary
3206 East Bradford Birmingham 48301

Yvonne Snabes
31510 Rush Garden City 48135

Evelyn & Rick Erickson
36539 Fairchild Westland 48185

Mrs. Ralph Lylin
23851 Beacon Dr. Farmington 48336

AMICARE HOME HEALTHCARE PROFESSIONAL SERVICES

Exciting opportunity for a business oriented nursing professional to manage field functions of home health care organization located in the Southfield area. Duties and responsibilities include managing day-to-day operations of private duty nurses for a 200-bed long-term care facility. Candidates must possess strong current clinical skills, problem solving abilities and outstanding supervisory skills.

ASSOCIATE ADMINISTRATOR
P.O. BOX 760207
LATHRUP VILLAGE, MI 48076
Equal Opportunity Employer

BRANCH MANAGER RN MANAGER

Amicare Home Healthcare, a multi-site home health care organization sponsored by the Sisters of Mercy Health Corporation, is looking for a dynamic business professional to manage our Ann Arbor Branch.

In this position, you will be responsible for:

- Developing recommendations regarding budgeted needs for product/service lines
- Ensuring compliance with JCAHO and all internal quality improvement requirements
- Recruiting, interviewing, and selecting direct reporting staff
- Ensuring appropriate utilization of services

The successful candidate will have a Bachelor's degree with concentration in healthcare administration or one of the allied health disciplines and two to three years of demonstrated business management experience. Successful candidates must possess excellent verbal and written communication skills, preferably in varied home care service delivery.

Amicare offers an outstanding benefits package and a competitive salary to match your skills. To apply, please send your resume and cover letter to:

ASSOCIATE ADMINISTRATOR
P.O. BOX 760207
LATHRUP VILLAGE, MI 48076
Equal Opportunity Employer

RN MANAGER NORTH OAKLAND AREA

JCAHO accredited home care agency seeking registered nurse to direct operations of branch office located in the North Oakland County area. Applicants must possess a valid Michigan nursing license with the ability to handle multiple duties. Knowledge of Medicare and JCAHO accreditation guidelines preferred. Successful candidates will receive a competitive salary and benefits package. For consideration, please send resume to:

RECRUITER
P.O. BOX 760207
LATHRUP VILLAGE, MI 48076
Equal Opportunity Employer

504 Help Wanted Office-Clerical ADMINISTRATIVE ASSISTANTS \$18-\$22,000

504 Help Wanted Office-Clerical CERTIFICATION COORDINATOR

504 Help Wanted Office-Clerical CUSTOMER SERVICE REPS

504 Help Wanted Office-Clerical JOBS, JOBS, JOBS! CLERICAL WORKERS

504 Help Wanted Office-Clerical LEGAL SECRETARY

504 Help Wanted Office-Clerical RECEPTIONIST

504 Help Wanted Office-Clerical SECRETARIES

504 Help Wanted Office-Clerical SWITCHBOARD OPERATOR

505 Help Wanted Food-Beverage BENNIGAN'S All Positions Available

504 Help Wanted Office-Clerical MEDICARE BILLER

504 Help Wanted Office-Clerical PERSONNEL MANAGER

504 Help Wanted Office-Clerical TEMPORARY RESOURCES

504 Help Wanted Office-Clerical NORRELL SERVICES

504 Help Wanted Office-Clerical OFFICE ASSISTANT

504 Help Wanted Office-Clerical RECEPTIONIST

504 Help Wanted Office-Clerical SECRETARY

504 Help Wanted Office-Clerical TYPIST

505 Help Wanted Food-Beverage COOK POSITION AVAILABLE

504 Help Wanted Office-Clerical HORIZON Health Systems

504 Help Wanted Office-Clerical CROSSMATCH PERSONNEL INC.

504 Help Wanted Office-Clerical EXECUTIVE ASSISTANT

504 Help Wanted Office-Clerical LEGAL SECRETARY

504 Help Wanted Office-Clerical PAYROLL CLERK

504 Help Wanted Office-Clerical RECEPTIONIST

504 Help Wanted Office-Clerical SECRETARY

504 Help Wanted Office-Clerical WORD PROCESSOR

505 Help Wanted Food-Beverage GRILL PERSON

504 Help Wanted Office-Clerical CAREERS

504 Help Wanted Office-Clerical DATA ENTRY CLERK

504 Help Wanted Office-Clerical EXECUTIVE SECRETARY

504 Help Wanted Office-Clerical DATA ENTRY EXPERIENCED RECEPTIONISTS & FILE CLERKS

504 Help Wanted Office-Clerical KELLY SERVICES

504 Help Wanted Office-Clerical NETWORK REPORTING CORPORATION

504 Help Wanted Office-Clerical SECRETARY

504 Help Wanted Office-Clerical WORD PROCESSOR

505 Help Wanted Food-Beverage HOTEL BARONETTE RESTAURANT

504 Help Wanted Office-Clerical CASH BONUS Apply Today

504 Help Wanted Office-Clerical DATA ENTRY CLERK

504 Help Wanted Office-Clerical EXECUTIVE SECRETARY

504 Help Wanted Office-Clerical DATA ENTRY EXPERIENCED RECEPTIONISTS & FILE CLERKS

504 Help Wanted Office-Clerical KELLY SERVICES

504 Help Wanted Office-Clerical NETWORK REPORTING CORPORATION

504 Help Wanted Office-Clerical SECRETARY

504 Help Wanted Office-Clerical WORD PROCESSOR

505 Help Wanted Food-Beverage HOTEL BARONETTE RESTAURANT

504 Help Wanted Office-Clerical CASH BONUS Apply Today

504 Help Wanted Office-Clerical DATA ENTRY CLERK

504 Help Wanted Office-Clerical EXECUTIVE SECRETARY

504 Help Wanted Office-Clerical DATA ENTRY EXPERIENCED RECEPTIONISTS & FILE CLERKS

504 Help Wanted Office-Clerical KELLY SERVICES

504 Help Wanted Office-Clerical NETWORK REPORTING CORPORATION

504 Help Wanted Office-Clerical SECRETARY

504 Help Wanted Office-Clerical WORD PROCESSOR

505 Help Wanted Food-Beverage HOTEL BARONETTE RESTAURANT

504 Help Wanted Office-Clerical CASH BONUS Apply Today

504 Help Wanted Office-Clerical DATA ENTRY CLERK

504 Help Wanted Office-Clerical EXECUTIVE SECRETARY

504 Help Wanted Office-Clerical DATA ENTRY EXPERIENCED RECEPTIONISTS & FILE CLERKS

504 Help Wanted Office-Clerical KELLY SERVICES

504 Help Wanted Office-Clerical NETWORK REPORTING CORPORATION

504 Help Wanted Office-Clerical SECRETARY

504 Help Wanted Office-Clerical WORD PROCESSOR

505 Help Wanted Food-Beverage HOTEL BARONETTE RESTAURANT

504 Help Wanted Office-Clerical ACCOUNTING CLERK

504 Help Wanted Office-Clerical DATA ENTRY CLERK

504 Help Wanted Office-Clerical EXECUTIVE SECRETARY

504 Help Wanted Office-Clerical DATA ENTRY EXPERIENCED RECEPTIONISTS & FILE CLERKS

504 Help Wanted Office-Clerical KELLY SERVICES

504 Help Wanted Office-Clerical NETWORK REPORTING CORPORATION

504 Help Wanted Office-Clerical SECRETARY

504 Help Wanted Office-Clerical WORD PROCESSOR

505 Help Wanted Food-Beverage HOTEL BARONETTE RESTAURANT

BOX 362 Observer & Eccentric Newspapers 36251 Schoolcraft Rd. Livonia, MI 48150



MARCH MADNESS

Sale

1992 T-Sport
Stock #920269
Deep tinted glass, rear defroster, cast wheels, AM/FM cassette, luggage rack, 7 passenger seat, power locks, power windows and much more.
List \$19,275
Sale Price \$16,799*
Lease for **\$299⁸⁶**** month



Come in and see why **Bob Jeannotte** Pontiac is Michigan's **#1**

1992 Sonoma Pickup GMC Lease Special Loaded
Stock #924086
Bench seat, air, 3.42 rear axle, heavy duty rear springs, cruise control, 2.8 V6, 5 speed, power steering, AM/FM cassette with equalizer, painted rear step bumper, SLE trim, intermittent wipers, tilt, power locks, power windows, sport suspension.
College Grad \$500 Price **\$9194**
List Price \$11,442 Discount \$1748
Sale Price \$9684
\$0 Down Lease \$197** month



1992 All New Bonneville SE Sedan
Stock #920117
Defogger, power locks, power windows, monotone paint, 15" wheels, AM/FM cassette, cruise, gauges and much more.
List Price \$19,907
Sale Price \$17,133*
Lease for **\$329⁷⁴**** month

1991 Grand Prix SE 2 Door
Stock #910204
Air conditioning, power steering, power brakes, 55/45 split seat, full covers, cloth trim, AM/FM stereo.
List Price \$15,539
Sale Price \$11,899*
Lease for **\$239⁹⁶**** month

Pontiac dealer for customer satisfaction for the second consecutive Model Year Masters Level 1.
2.9% APR
Or Up To **\$1750** Rebates

1991 Sierra Full Size Pickup
Stock #913288
Bench seat, cloth; heavy duty chassis, heavy duty front and rear shocks, 4.3 V6, 5 speed, manual, AM/FM radio with clock, painted rear step bumper, full size spare.
Sale Price \$9944*
College Grad Discount \$500 College Grad Price \$9444
Lease for **\$199⁶⁹**** month

1992 Safari Passenger Van
Stock #924104
Deep tinted glass, power locks, 4.3 V6, 4 speed automatic, AM/FM air, cassette, cruise, tilt.
Sale Price \$14,997*
College Grad Discount \$500 College Grad Price \$14,497
Lease for **\$254**** month

1992 Grand AM SE 2 Door
Stock #920215
Automatic transmission, AM/FM cassette, air conditioning, cycled wipers, tilt wheel, power steering, power brakes, cloth buckets and much more!
List Price \$13,719
Sale Price \$11,999*
1st Time Buyer Rebate \$400
1st Time Buyer Amount to Finance \$11,599
Lease for **\$229⁸⁴**** month

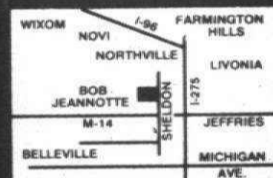
1992 Sunbird LE Coupe
Stock #920156
Anti-lock brakes, power steering, power mirrors, tinted glass, convenience group 1, 2.2L EFI 14 engine, 5 speed manual transmission, P195/70HR14 BSW A/S, manual air, AM/FM stereo with cassette and clock, aluminum wheels 14". Stock #11542.
List Price \$10,095
Sale Price \$8745*
First Time Buyer Discount \$400
First Time Buyer Amount to Finance \$8345
Lease for **\$176⁰⁴**** month

Over 300 Cars and Trucks Available for Immediate Delivery

1992 Sonoma Club Coupe 2WD
Deep tinted glass, bucket seats, rear jump seats, air, cruise control, 4.3 V6, 4 speed, automatic, P215-GSR15 tires, full size spare, AM/FM cassette w/ equalizer, SLE equipment, intermittent wipers, tilt, power locks, power windows.
List Price \$14,897 Discount -2143
Sale Price \$12,754*
College Grad Discount \$500 College Grad Price \$12,254 GM Opt II less \$721.25
Lease for **\$219**** month

1991 Vandura 3/4 Ton Santa Fe Conversion
Stock #913265
Loaded, 5.7 V-8, 4 speed automatic, rally wheels, AM/FM cassette with equalizer, power locks, power windows, cruise, tilt, 7 passenger, running boards, front and rear air and heat, fold down sofa, deluxe mats, must see.
List \$22,286 Discount -4602
Sale Price \$17,684*
College Grad Discount \$500 College Grad Price \$17,684 GM Opt II Less \$841
Lease for **\$359**** month

BOB JEANNOTTE PONTIAC-GMC TRUCK
14949 Sheldon Road, Plymouth (Just North of M-14, Jeffries Freeway)
Hours: 9-6 Tues., Wed., Fri. 9-9; Mon. & Thurs.
963-7192 453-2500



TRI COUNTY PONTIAC DEALERS MEMBER
GM Employees Option I - Option II Suppliers Welcome
PEP PLAN HEADQUARTERS

AT BLACKWELL FORD: WE'VE GOT THE **RIGHT PRICE**


Rebates up to **\$1500** on select models to qualified buyers.

2.9% APR Financing on select models.

1992 ESCORT LX 2 DOOR
PEP 320A, power steering, light/convenience group, light group/cup tray, dual electric remote mirrors, REM fuel door/decklid release, rear window defrost, 1.9 Liter SEFI 4 cylinder engine, 5-speed manual transmission, P175/70R13 BSW tires, clearcoat paint. Stock #13188.
List Price \$11,028
Sale Price \$8795*
\$500 Rebate or 2.9% Approved Financing**

Special 24 Months Lease Rates Over 300 Cars & Trucks in stock and available for immediate delivery

1992 PROBE GL
PEP 251A, rear window defrost, tilt cluster column, dual illuminated visor mirrors, tinted glass, convenience group 1, 2.2L EFI 14 engine, 5 speed manual transmission, P195/70HR14 BSW A/S, manual air, AM/FM stereo premium with cassette and clock, aluminum wheels 14". Stock #11542.
List Price \$14,897
Sale Price \$11,372*
\$1500 Rebate or 2.9% Approved Financing**



1992 FORD AEROSTAR REGULAR LENGTH
PEP 401A, XL trim, 7 passenger with dual captain chairs XL, air conditioning, privacy glass, speed control, tilt wheel, 3.0L engine, automatic overdrive, transmission, P215/70R14SL BSW all season tires, 3.73 ratio reg axle, clearcoat paint, rear window defrost, AM/FM stereo cassette with clock, bodyside molding. Stock #16602.
List Price \$18,528
Sale Price \$13,745*
\$1000 Rebate or 7.9% Approved Financing**



1992 RANGER 114" WB
PEP 564A, XLT trim, AM/FM stereo cassette with clock, power steering, sliding rear window, chrome rear step bumper, 2.3L EFI I-4 engine, 5 speed manual overdrive transmission, P215 steel OWL all season tires, 3.45 ratio reg axle, 60/40 cloth split bench seat, manual SVP, cast aluminum deep dish wheels, air. Stock #19578.
List Price \$13,570
Sale Price \$9510*
\$750 Rebate or 7.9% Approved Financing**

1992 TAURUS L STATION WAGON
PEP 203A, manual air conditioning, rear window defrost, engine 3.0 liter EFI V6, automatic overdrive transmission, P205/70R14 BSW tires. Stock #15635.
List Price \$17,514
Sale Price \$14,248*
\$500 Rebate or 7.9% Approved Financing**

1992 CROWN VICTORIA
PEP 110B, rear window defrost, illuminated entry, light/decor group, power lock group, AM/FM stereo with cassette, remote release fuel door, spare tire cover, speed control, leather wrapped steering wheel, 4.6L OHC SEFI V8 engine, automatic, P215/70R15 BSW tires, front and rear floor mats. Stock #10565.
List Price \$21,473
Sale Price \$17,498*
\$500 Rebate or 7.9% Approved Financing



1991 MUSTANG LX HATCHBACK
Special value group, power lock group, dual remote mirrors, power side windows, styled road wheels, cargo tie down net, front floor mats, speed control, AM/FM radio cassette clock, custom equipment group, air conditioning, dual illuminated, engine 2.3 liter EFI-OHC, automatic overdrive transmission, rear window defrost, premium sound system. Stock #2014.
List Price \$14,155
Sale Price \$9522*
\$1000 Rebate or 7.9% Approved Financing**



1992 ESCORT GT "Power Moonroof"
PEP 330A, rear window defrost, manual air, luxury convenience group, tilt steering wheel, speed control, tachometer instrument, 1.8L DOHC 4 cylinder engine, 5 speed manual transmission, P185/60 HR 15 BSW tires, power moonroof, premium sound system. Stock #13175.
List Price \$14,221
Sale Price \$11,197*
\$750 Rebate or 2.9% Approved Financing**

1992 TEMPO 2 DOOR SEDAN
PEP 225A, manual control air conditioning, light group, dual electric control mirrors, tilt steering wheel, engine 2.3 liter EFI HSC, FLC automatic transaxle, P185/70R14 BSW tires, decklid luggage rack, rear window defrost. Stock #14576.
List Price \$10,986
Sale Price \$8418⁶⁰*
\$500 Rebate or 7.9% Approved Financing**

1992 FORD AEROSTAR XL EXTENDED BODY
Air, automatic, full power, stereo, tilt & cruise, 2 tone tan, sharp.
List Price \$12,988
Sale Price \$9988

1992 F150 4X4 REG CAB FLARESIDE
Wheelbase 117, PEP 515A, XLT Lariat trim, light convenience group, air, power window & door locks, cruise, tilt, single fuel tank, P265/75R15 OWL all terrain tires, trailer towing package, tachometer, electronic shift touch drive, AM/FM stereo cassette with clock. Stock #18574.
List Price \$22,125
Sale Price \$18,885*
\$400 Rebate or 7.9% Approved Financing**

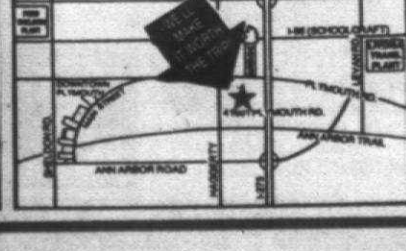
1988 OLDS CALAIS 2 DOOR
Automatic, air, stereo and much more, 40,000 miles, medium blue.
\$5788

Used Cars at The Right Price

1989 PROBE LX Jet black, automatic, air, power windows, power locks, tilt and cruise, sharp. \$5488	1987 ESCORT 2 DOOR Automatic, power steering, power brakes, locks & runs good, transportation special. \$1988	1990 MUSTANG 5 speed, air, power steering, power brakes, tilt, cruise, stereo, medium blue, nice. \$5988	1990 V.W. CORRADO 5 speed, air, loaded with extras, snow white, get ready for spring. \$9988	1990 BRONCO II XLT 4x4 automatic, air, stereo, power steering, power brakes, 2 tone black and gray, like new. \$11,988	1988 OLDS CALAIS 2 DOOR Automatic, air, stereo and much more, 40,000 miles, medium blue. \$5788
1977 CHEVROLET CAPRICE 4 DOOR V-8, automatic, air, power steering, power brakes, baby blue, no rust, must see. \$1988	1989 LINCOLN TOWN CAR Loaded with extras, new tires, 37,000 miles, chocolate brown, leather trim. \$11,988	1990 PROBE GL Automatic, air, stereo, power steering, power brakes and much more, dark silver gray finish. \$7988	1990 E150 CLUB WAGON XLT All the extras, all the seats, a truly beautiful vehicle, 29,000 miles. \$12,988	1990 AEROSTAR XL EXTENDED BODY Air, automatic, full power, stereo, tilt & cruise, 2 tone tan, sharp. \$12,988	1990 RANGER XLT Automatic, power steering, power brakes, custom cap, only 33,000 miles, extra clean. \$7988

A, X, Z Plans Welcome!
*plus tax, title, destination and rebate assigned to Blackwell Ford.
**2.9% and 7.9% APR financing for up to 48 months to qualified buyers.

Blackwell FORD PERFORMS!
41001 PLYMOUTH ROAD • PLYMOUTH • 453-1100
Over 300 cars & trucks in stock & available for immediate delivery • A & Z Plans Welcome!



505 Help Wanted
Food-Beverage
PIZZA SHOP
Looking for a cook to help
manage a pizza shop. Must
be experienced. Call Mary
at 475-9200.

506 Help Wanted Sales
AMERICAN INSURANCE
Seeking individuals with
4-6 years' experience in
sales. Good commission
program. Call Mary at
475-9200.

507 Help Wanted
TELEMARKETING
National computer
company seeking
telemarketers for
health insurance sales.
Call Mary at 475-9200.

508 Help Wanted
Domestic
Nurse aide needed
for 2 children and 10
hours per week. Call
Mary at 475-9200.

509 Help Wanted
Couples
Experienced apartment
manager for 100 units.
Call Mary at 475-9200.

510 Help Wanted
Administrative
Part-time administrative
assistant for a
telemarketing office.
Call Mary at 475-9200.

511 Entertainment
Music
Seeking experienced
musicians for a
band. Call Mary at
475-9200.

512 Situations Wanted
Female
Seeking part-time
telemarketing position.
Call Mary at 475-9200.

513 Child Care
Nursery School
Seeking a qualified
nursery school teacher.
Call Mary at 475-9200.

514 Elderly Care
Assistance
Seeking a caregiver
for an elderly individual.
Call Mary at 475-9200.

515 Education
Instruction
Seeking an experienced
teacher for a private
school. Call Mary at
475-9200.

520 Secretarial & Business Services
BOOKKEEPING/TYPING Service
Done in my home. Pick up and
deliver. 15 years experience.
681-8343

521 Housecleaning
HOUSECLEANING
Experienced, dependable
service. Call Mary at
475-9200.

522 Personal Services
RESUMES FROM 200+ Writers/Editors
Typing/Proof-reading/Editing
No obligation. 493-6277

523 Tax Services
ACCOUNTING & TAX SERVICE
Individual & Small Business
Call Mary at 475-9200.

524 Income Taxes
ALL INCOME TAXES
Professional tax planning
and preparation services.
Call Mary at 475-9200.

525 Quick Refund
QUICK REFUND
Refund your taxes
within 24 hours. Call
Mary at 475-9200.

526 Lost & Found
602 Lost & Found
Found a black and white
cat. Call Mary at
475-9200.

527 700 Collectibles
700 Collectibles
Collectible items for sale.
Call Mary at 475-9200.

528 700 Crafts
700 Crafts
Handmade crafts for sale.
Call Mary at 475-9200.

529 700 Home Goods
700 Household Goods
Household goods for sale.
Call Mary at 475-9200.

530 Computers
715 Computers
Computer services and
equipment. Call Mary at
475-9200.

531 Hospital/Medical
721 Hospital/Medical
Medical equipment for sale.
Call Mary at 475-9200.

532 Musical Instruments
726 Musical
Musical instruments for sale.
Call Mary at 475-9200.

533 Pianos
PIANOS WANTED
We buy pianos in any
condition. Call Mary at
475-9200.

534 Hi-Fi, Stereo
Hi-Fi, Stereo
Audio equipment for sale.
Call Mary at 475-9200.

535 Sporting Goods
730 Sporting Goods
Sporting goods for sale.
Call Mary at 475-9200.

536 Exercise Equipment
EXERCISE EQUIPMENT
Exercise equipment for sale.
Call Mary at 475-9200.

537 Red Wing Ticket Winners
RED WING TICKET WINNERS
Red Wing tickets for sale.
Call Mary at 475-9200.

538 Other Classifieds
Other classified ads.
Call Mary at 475-9200.

539 600 Personal
600 Personal
Personal services and
advertisements. Call
Mary at 475-9200.

540 600 Transportation
608 Transportation
Transportation services.
Call Mary at 475-9200.

541 600 Antiques
602 Antiques
Antiques for sale. Call
Mary at 475-9200.

542 708 Household Goods
708 Household Goods
Household goods for sale.
Call Mary at 475-9200.

543 708 Household Goods
708 Household Goods
Household goods for sale.
Call Mary at 475-9200.

544 715 Computers
715 Computers
Computer services and
equipment. Call Mary at
475-9200.

545 721 Hospital/Medical
721 Hospital/Medical
Medical equipment for sale.
Call Mary at 475-9200.

546 726 Musical Instruments
726 Musical
Musical instruments for sale.
Call Mary at 475-9200.

547 Pianos
PIANOS WANTED
We buy pianos in any
condition. Call Mary at
475-9200.

548 Hi-Fi, Stereo
Hi-Fi, Stereo
Audio equipment for sale.
Call Mary at 475-9200.

549 Sporting Goods
730 Sporting Goods
Sporting goods for sale.
Call Mary at 475-9200.

550 Exercise Equipment
EXERCISE EQUIPMENT
Exercise equipment for sale.
Call Mary at 475-9200.

551 Red Wing Ticket Winners
RED WING TICKET WINNERS
Red Wing tickets for sale.
Call Mary at 475-9200.

552 Other Classifieds
Other classified ads.
Call Mary at 475-9200.

CAREER SALES OPPORTUNITY
For nearly 42 years a tradition of quality
Real Estate Brokerage has been our
Hallmark:
WEIR, MANUEL, SNYDER & RANKE, INC.
Work with some of Michigan's highest
earning Real Estate Sales Associates.
Limited number of sales positions are
currently available.
• OFFICES IN ROCHESTER, TROY,
BIRMINGHAM, PLYMOUTH AND
WEST BLOOMFIELD.
• IN-HOUSE TRAINING PROVIDED.
• TRAINING CLASSES START
REGULARLY
For more information and
confidential interview with
Phyllis Goodrich, Director
of Career Development
call 851-5500.

IT SELLS
It buys
It employs
It informs
It locates
It connects
It saves

People everywhere find that classified is effective advertising. They agree: "It works."

Observer & Eccentric Classified Ads

637 E. Big Beaver
Suite 111
Troy, MI 48063
Call Anytime, 24 Hours A Day
(313) 528-1233

TWO TICKETS
To The
GOALS CHAMPIONSHIP
MARCH 21 & 22 • JOE LOUIS ARENA
Sat., MARCH 21 • 4:00 pm & 7:30 pm
Sun., MARCH 22 • 1:00 pm & 4:00 pm
Championship Doubleheader
Participants announced MARCH 16
Tickets Each Day: \$16, \$12.50, \$10 & \$8
STUDENTS: \$8 reduced to \$5 w/d. (at the Box Office ONLY!)
Tickets on sale NOW on Campus and
Joe Louis Arena Box Office and all
TICKETMASTER
CHARGE BY PHONE
(313) 645-6666
GENERAL INFORMATION
(313) 567-0000

The Winner receives a bid to the NCAA Ice Hockey Regionals
DON'T MISS THE NCAA DIVISION I WEST REGIONALS, MARCH 27-29

Just Mail A Postcard To
CCHA HOCKEY
Observer & Eccentric Newspapers
Observer & Eccentric Newspapers
36251 Schoolcraft Road, Livonia, MI 48150
PLEASE ONLY ONE POSTCARD PER FAMILY
We'll impartially draw names for winners from your entries.
Watch your hometown newspaper Classified sections where
we will print winners' names.
If you find your name among the classified advertisements, call
591-2300, extension 2153, and claim your CCHA Hockey
passes. It's as easy as that.
Monday winners must call by 5 p.m. Tuesday. Thursday
winners must call by 5 p.m. Friday. Passes will be mailed to
winners.

714 Business & Office Equipment
We sell and lease office equipment
and supplies. Call Mary at
475-9200.

715 Computers
Computer services and
equipment. Call Mary at
475-9200.

721 Hospital/Medical
Medical equipment for sale.
Call Mary at 475-9200.

726 Musical Instruments
Musical instruments for sale.
Call Mary at 475-9200.

PIANOS WANTED
We buy pianos in any
condition. Call Mary at
475-9200.

Hi-Fi, Stereo
Audio equipment for sale.
Call Mary at 475-9200.

Sporting Goods
Sporting goods for sale.
Call Mary at 475-9200.

Exercise Equipment
Exercise equipment for sale.
Call Mary at 475-9200.

Red Wing Ticket Winners
Red Wing tickets for sale.
Call Mary at 475-9200.

Other Classifieds
Other classified ads.
Call Mary at 475-9200.

1992 CARAVAN



7 passenger, automatic, 2.5L S.O.H.C. engine, rear defrost, power liftgate, air, dual note horns, map and cargo lights, body-side moldings, underseat storage drawer, power steering and brakes, cloth hi-back bucket seats, AM/FM stereo. Stock #70072.

SALE PRICE \$12,995*

'92 1/2 SHADOW ES 2 DR.



2.5 liter, 4 cylinder engine, automatic, power steering, power brakes, air, tinted glass, rear defogger, AM/FM stereo cassette, console fog lights, dual horn, tachometer, cloth seats. Stock #62102.

SALE PRICE \$9295*

NEW 1992 B-250 VAN CONVERSION 127" W.B.



AIR CONDITIONED

5.2L Magnum V8, automatic, power steering and brakes, tinted glass, power windows and locks, tilt, cruise, AM/FM stereo cassette, cast aluminum wheels, 4 Captain chairs, rear sofa, 3 bay windows, running boards, steel belted radial white sidewall tires. Stock #73042.

\$12,995*

1992 DYNASTY



Air, power steering and brakes, cloth seats, rear defogger, AM/FM stereo, map lights, automatic, body-side moldings, driver and passenger visor mirrors, remote trunk release, intermittent wipers.

SALE PRICE \$9995*

BRAND NEW D-150 8 FT. BOX PICKUP



3.9L Magnum V6, 5 speed, power steering and brakes, 6x9 mirrors, AM/FM stereo, 30 gallon fuel tank, step bumper, pulse wipers, cloth trim, black sidewall steel belted radial tires. Stock #78006.

\$9445*

BRAND NEW 1991 DAYTONA



2.5L engine, automatic, power steering and brakes, air, tinted glass, rear window defogger, AM/FM stereo, tilt wheel, steel belted black sidewall tires. Stock #24007.

\$9984*

BRAND NEW 1992 SPIRIT



2.5L engine, automatic, power steering and brakes, air, tinted glass, rear defogger, AM/FM stereo, tilt wheel, cruise, cloth trim, black sidewall steel belted radial tires. Stock #61038.

\$10,499*

BRAND NEW DAKOTA CLUB CAB



3.9L Magnum engine, automatic, power steering and brakes, air, tinted glass, power windows-tilt locks, tilt wheel, cruise, AM/FM stereo cassette, LE decor, tu-tone paint, cast aluminum wheels, raised white letter tires, bright step bumper, sliding rear window. Stock #77036.

\$13,898*

BRAND NEW 1992 COLT



1.5L engine, 4 speed, power brakes, bucket seats, steel belted radial tires, rear defogger. Stock #68003.

\$6851*

• Low Mileage FACTORY PROGRAM CARS • Balance of Factory Warranty

'91 GRAND VOYAGER SE



V6, automatic, air, 7 passenger, power windows and locks, rear defrost, driver side airbag.

\$13,844

'91 DAKOTA SE CLUB CAB



V-6, auto., air, tilt, cruise, p. wind, p.d.l., AM/FM cass.

\$11,488

'91 DYNASTY



V-6, auto., air, cruise, tilt, p.w., p.d.l., AM/FM stereo, r. defrost, p. side air bag.

\$9844

'91 LEBARON Convertible



V-6, auto., air, loaded.

\$11,844

'91 B-250 LE RAM WGN.



V-6, auto., O.D. air 8-speaker heat, air, trailer tow pkg., sunscreen glass, AM/FM cass., 300 pac IV.

\$14,988

'91 SHADOW CONVERTIBLE



Auto., air, p.s., p.b., AM/FM stereo, p. wind, tilt, cruise.

\$9844

★ ★ ★ ★ BIG SAVINGS ON OUR QUALITY USED CARS!!! ★ ★ ★ ★

'89 VOYAGER SE

V-6, automatic, air, 7 passenger.

\$7488

'89 CALAIS

Quad 4, automatic, air, loaded.

\$5988

'88 BERETTA

Automatic, air, lots more.

\$3988

'89 SPIRIT

Automatic, air, tilt, cruise, cassette, loaded.

\$4995

'90 SHADOW

Automatic, air, loaded.

\$5844

'88 DODGE B-350

15 passenger, V-8, automatic, dual air, like new.

\$8988

'88 TEMPO LX

Automatic, air, loaded, 32,000 miles, like new.

\$4988

'89 DYNASTY

V-6, automatic, air, loaded, low miles.

\$6488

'89 BLAZER S-10

Tahoe, V-6, automatic, 4x4, air, loaded.

\$8995

'89 LeBARON CONVERTIBLE

Premium edition, automatic, air, leather, every option.

\$9844

'90 LeBARON CONVERTIBLE

V-6, automatic, air, loaded.

\$10,844

'87 CHEVY S-10

Automatic, like new.

\$4988

'89 ESCORT LX

Automatic, air, loaded.

\$3988

'91 GEO METRO

11,000 miles, AM/FM cassette, 50 - MPG.

\$4788

'88 NEW YORKER MARK CROSS

Automatic, air, leather, every option.

\$8488

BRUCE Campbell DODGE

538-1500

14875 TELEGRAPH, REDFORD BETWEEN FIVE MILE AND I-96

SATURDAY SERVICE HOURS: 8:00 A.M. TO 2:00 P.M.

5 Mile Rd. Bruce Campbell Dodge 1-96 Jeffries X-Way

QUALITY SERVICE AWARD

CHRYSLER MOTORS PRESENTS

AVIS FORD

"CONSIDER AMERICAN, BUY FORD"

2.9% APR Financing*

\$500 CASH BONUS ON IN-STATE TRADES!!!

NEW '92 PROBE GL 2 DOOR



\$1500 REBATE

WAS \$14,584 IS **\$11,042***

Air, tilt wheel, instrument cluster column, rear window defroster, dual illuminated visor mirrors, tinted glass, convenience group I, power steering, power brakes, moldings, cargo cover, console, side window demister, performance instrumentation cluster, interval wipers. Stock #2359.

NEW '92 TEMPO GL 4 DOOR SEDAN



\$500 REBATE

WAS \$13,247 IS **\$9944***

Air, light group, power steering, power brakes, tinted glass, dual electric control mirrors, tilt wheel, center armrest, rear window defroster, floor mats, power lock group, electric AM/FM stereo cassette/clock, polycast wheels, automatic transaxle, deck lid luggage rack, body side moldings, console, illumination, dual visor mirrors, luxury sound insulation, interval wipers. Stock #2309.

NEW '92 ESCORT LX 3 DOOR



\$500 REBATE

WAS \$10,937 IS **\$8660***

Air, power steering, light convenience group/cupholder tray, dual electric remote mirrors, remote fuel door, deck lid release, power brakes, tinted glass, AM/FM stereo, side window demister, interval wipers. Stock #1748.

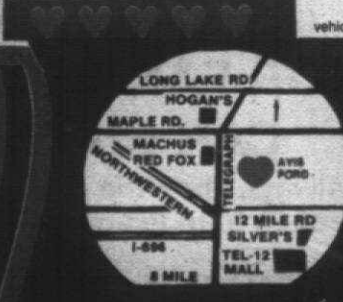
NEW '92 FESTIVA GL 2 DOOR HATCHBACK



\$500 REBATE

WAS \$8790 IS **\$7513***

AM/FM stereo, power brakes, body side moldings, cargo cover, console gauges, reclining bucket seats, flip fold rear seat, side window demister, rear window wiper/washer, courtesy lamps, inside hood release, monochromatic paint. Stock #2535.



AVIS FORD CALL **1-800-358-AVIS** OR **355-7500**

The Dealership With A Heart

TELEGRAPH RD. Just North of 12 MILE RD., SOUTHFIELD OPEN MON. & THURS. 'TIL 9 P.M.

FREE TANK OF GAS with every new vehicle purchase from stock.

*Plus tax, title, license and destination. Rebate, if applicable, included. Retail sales only. Picture may not represent actual vehicle. \$500 cash bonus on retail deals only. Must have minimum \$1000 value. 2.9% APR financing up to 48 months on select models. Must take delivery from dealer stock. SALE ENDS 3/16/92.