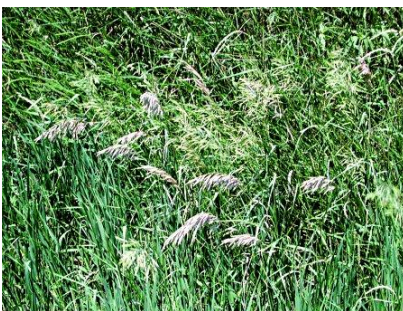


Meadow Bromegrass

Bromus biebersteinii



Meadow bromegrass is a long-lived, perennial bunchgrass with a tendency for some vegetative spreading under dryland conditions and a moderate amount under irrigation. It produces short, stout rhizomes 4 to 6 inches long. This characteristic provides soil protection not found in other bunchgrasses. The stand does not decline in productivity as rapidly as other vigorous, sod-binding grasses. It is a heavy producer of roots and crowns. The plant has numerous light green leaves that are predominantly basal and mildly pubescent. The seed stalks are from 24 to 48 inches high and extend above the leaf mass in an open panicle. The plants head and mature seven to 10 days earlier than smooth bromegrass. Seeds of meadow bromegrass are similar in appearance to smooth bromegrass seeds, but are almost twice the size and have much larger awns. Plants may have either white or purple seed. The seed germinates readily, seedling vigor is good and the seedlings establish well. The seed stalks are erect with the seed in an open panicle.

Meadow bromegrass has good drought tolerance and excellent winter-hardiness. It has performed well at elevations from 500 feet to over 6,000 feet. There is some indication that its range may extend into a lower rainfall zone and to slightly lower elevations than smooth bromegrass.

Meadow bromegrass contains some of the good features of both smooth bromegrass and orchardgrass. This grass can extend the prime grazing season as well as increase total forage production, and is very compatible with alfalfa. It yields as much or more total forage as smooth bromegrass, has much faster recovery and better fall growth. It differs from smooth bromegrass in being much less strongly creeping, and is slower to become established. It has more basal leaves. The forage quality is similar to that of smooth bromegrass. The vegetative growth is very palatable to all classes of livestock as both green forage and cured hay.

Seeding Rate: Drilled: 12-15 Lbs. / Ac | Broadcast: 1 Lb. / 1,400 sq ft

Height Range (inches): 12 - 36

Seeds Per Pound: 93,000

Taxonomy

Species: riparius

Genus: Bromus

Family: Poaceae

Order: Cyperales

Subclass: Commelinidae

Class: Liliopsida

Division: Magnoliophyta

Subkingdom: Tracheobionta

Kingdom: Plantae



Arizona Seed Technology, Inc.

"Technology for a Greener Tomorrow"

Peoria, AZ 85382

Phone: 623-572-4907 Fax: 623-566-1436

www.arizonaseed.com