



PHYTOTAXA

168

An inventory of vascular plants endemic to Italy

LORENZO PERUZZI^{1*}, FABIO CONTI² & FABRIZIO BARTOLUCCI²

¹*Dipartimento di Biologia, Unità di Botanica, Università di Pisa, Via Luca Ghini 13, 56126, Pisa, Italy;*
e-mail lorenzo.peruzzi@unipi.it

²*Scuola di Scienze Ambientali, Università di Camerino – Centro Ricerche Floristiche dell'Appennino, Parco Nazionale del Gran Sasso e Monti della Laga, San Colombo, 67021 Barisciano (L'Aquila);*
e-mail fabio.conti@unicam.it; fabrizio.bartolucci@gmail.com

**author for correspondence*



Magnolia Press
Auckland, New Zealand

Peruzzi *et al.*

An inventory of vascular plants endemic to Italy

(*Phytotaxa* 168)

75 pp.; 30 cm.

16 May 2014

ISBN 978-1-77557-378-4 (paperback)

ISBN 978-1-77557-379-1 (Online edition)

FIRST PUBLISHED IN 2014 BY

Magnolia Press

P.O. Box 41-383

Auckland 1346

New Zealand

e-mail: magnolia@mapress.com

<http://www.mapress.com/phytotaxa/>

© 2014 Magnolia Press

All rights reserved.

No part of this publication may be reproduced, stored, transmitted or disseminated, in any form, or by any means, without prior written permission from the publisher, to whom all requests to reproduce copyright material should be directed in writing.

This authorization does not extend to any other kind of copying, by any means, in any form, and for any purpose other than private research use.

ISSN 1179-3155 (Print edition)

ISSN 1179-3163 (Online edition)

Table of contents

Abstract	3
Introduction	3
Material and Methods	3
Results	5
Discussion	8
Checklist of endemic Italian vascular flora	9
Acknowledgements	72
References	72

Abstract

For the purpose of the present study we considered as Italian endemics those specific and subspecific taxa occurring in Italy that are not found elsewhere with the exception of Corsica (France) and Malta. This study presents an updated list of the endemic taxa in the Italian flora, including their geographical distribution at regional level. Italy is characterized by 1371 endemic species and subspecies (18.9% of the total vascular flora): three taxa belong to Lycopodiidae, one to Polypodiidae, two to Pinidae and 1365 to Magnoliidae (three paleoherbs, 221 monocots and 1144 eudicots). The endemic flora belongs to 29 orders, 67 families and 304 genera. Sicily, Sardinia, Calabria and Abruzzo are the four regions richest in endemics. About 58% of endemics are confined to a single administrative region. The most represented orders, families and genera are: Asterales, Caryophyllales and Asparagales, Asteraceae, Plumbaginaceae and Caryophyllaceae, *Limonium*, *Centaurea* and *Hieracium*, respectively. The phytogeographic isolation of Sardinia and Sicily and the separation of peninsular Italy from Northern Italy is confirmed. The relative isolation of Puglia with respect the remaining southern Italian peninsular regions is also confirmed. Alpine region endemics (from northern Italy) are underrepresented.

Key words: floristics, phytogeography, systematics, taxonomy

Introduction

The term endemic is used to designate a species restricted to a definite area (Siljak-Yakovlev & Peruzzi 2012). Documenting endemic floras is important for phytogeographic and evolutionary studies and for setting conservation priorities (Hinz 1989, Garbari 1990, Ungricht 2004, Ferreira & Boldrini 2011, Bacchetta *et al.* 2012a).

According to the most recent checklist of the Italian vascular flora (Conti *et al.* 2005, 2007), 1024 species and subspecies are endemic to Italy. However, many taxa (227) have been described as new to science in the meantime (seven of them in Phytotaxa, see Bacchetta *et al.* 2012a-b, Melai *et al.* 2012, Brullo *et al.* 2013a-b, Fenaroli *et al.* 2013, Minissale *et al.* 2013), whilst others have been recognized following taxonomic revisions and a significant amount of further floristics knowledge has accumulated since 2007. Preliminary to a new edition of the checklist of the Italian vascular flora (F. Conti and collaborators, in prep.) we undertook an update of the inventory of vascular plants endemic to Italy. This also served as a basis for a chromosome number survey of Italian endemic flora (Bedini *et al.* 2012) and the Italian Loci Classici Census project (Domina *et al.* 2012a). The latter aimed at improving the systematic knowledge of vascular plants described from Italy. Furthermore, updating knowledge on Italian endemics is important considering that the Italian peninsula is located at the centre of the Mediterranean Basin, one of the 25 world biodiversity hotspots with an exceptional loss of habitats Myers *et al.* (2000). Therefore, in the present paper we aim to: (i) produce an updated list of Italian endemics, including their regional distribution; (ii) carry out a phytogeographical analysis of Italian endemics, on a regional basis.

Material and Methods

For the purpose of the present study Italian endemics are defined as the specific and subspecific taxa occurring only in Italy or only in Italy and in Corsica (France) or only in Italy and in Malta. We included the taxa from Corsica and Malta in the light of the strong biogeographical links connecting Sardinia and Tuscany to Corsica, and

Sicily to Malta. Given the disputed nature of the subspecies within the genus *Hieracium* Linnaeus (1753: 799) (Asteraceae; around 220 subspecies putatively endemic to Italy) they were excluded. Endemic hybrid taxa [i.e. *Doronicum* × *minutilloii* Peruzzi in Peruzzi *et al.* (2012: 875), *Ophrys* × *capoliverii* Iamónico *et al.* (2011: 436), *Sempervivum* × *luisae* Gallo (2012: 289) etc.] and putatively endemic taxa of doubtful origin, such as *Amaranthus cacciatoii* (Aellen ex Cacciato 1966: 618) Iamónico (2013a: 239) (see also Iamónico 2012a) were also excluded as were varietal or taxonomically doubtful units [for instance, *Atriplex elongata* Gussone (1844: 592) – Iamónico, 2012b or *Pancreatium linosae* Soldano & F.Conti in Conti *et al.* (2005: 20) – De Castro *et al.* 2012]. The checklist and distribution of the taxa at regional level was derived from Conti *et al.* (2005, 2007) and from a survey of the data appeared in the period 2007-2013 in the column “Notulae alla checklist della flora vascolare italiana” published *Informatore Botanico Italiano*. In addition Web of Science, Scopus and Google Scholar were regularly checked for new taxa descriptions and/or taxonomic revisions. Each region is reported according to the following acronyms (identical to those by Conti *et al.* 2005; Fig. 1): Valle d'Aosta, VDA; Piemonte, PIE; Lombardia, LOM; Trentino-Alto Adige, TAA; Veneto, VEN; Friuli-Venezia Giulia, FVG; Liguria, LIG; Emilia-Romagna, EMR; Tuscany, TOS; Marche, MAR; Umbria, UMB; Lazio, LAZ; Abruzzo, ABR; Molise, MOL; Puglia, PUG; Campania, CAM; Basilicata, BAS; Calabria, CAL; Sicily, SIC; Sardinia, SAR. The regions are listed in geographical order: NW Italy (VDA, PIE); NE Italy (LOM, TAA, VEN, FVG), N Italian peninsula (LIG, EMR, TOS), C Italian peninsula (MAR, UMB, LAZ, ABR, MOL), S Italian peninsula (PUG, CAM, BAS, CAL), SIC and SAR. The occurrence in Corsica and Malta is coded as (Corsica) and (Malta) respectively.



FIGURE 1. Map showing the twenty administrative Italian regions, Corsica, France (Co) and Malta (Ma). Valle d'Aosta, VDA; Piemonte, PIE; Lombardia, LOM; Trentino-Alto Adige, TAA; Veneto, VEN; Friuli-Venezia Giulia, FVG; Liguria, LIG; Emilia-Romagna, EMR; Tuscany, TOS; Marche, MAR; Umbria, UMB; Lazio, LAZ; Abruzzo, ABR; Molise, MOL; Puglia, PUG; Campania, CAM; Basilicata, BAS; Calabria, CAL; Sicily, SIC; Sardinia, SAR.

A binary matrix (1371 rows × 20 columns) was built and subjected to Principal Coordinate Analysis and UPGMA cluster analysis using Baroni Urbani & Buser's agglomeration index. This index is well suited for Operational Geographic Units (OGUs, in our study corresponding to each administrative region) with well known floristic composition since it takes into account shared co-absences (Biondi 2006).

The taxonomic circumscription of orders and families, as well as their sequence in the list was derived from: a) Stevens (2008 onwards), APGIII (2009), Haston *et al.* (2009) and Reveal & Chase (2011) for angiosperms; b) Chaw *et al.* (2000), Chase & Reveal (2009) and Christenhusz *et al.* (2011a) for gymnosperms; c) Pryer *et al.* (2001), Smith *et al.* (2006), Chase & Reveal (2009) and Christenhusz *et al.* (2011b) for euphyllophyte cryptogams. Within each family, genera, species and subspecies are listed in alphabetical order.

The nomenclature of species and subspecies was critically checked in the following databases: IPNI (2013), the Plant List (The Plant List 2010), Euro+Med (2006 onwards) and other relevant literature [e.g. Romolini & Souche 2012, for the critical genus *Ophrys* Linnaeus (1753: 945)].

Results

The taxa endemic to Italy as of 10 April 2014 includes 1371 species and subspecies, grouped in 304 genera, 67 families and 29 orders. Three taxa belong to Lycopodiidae, one to Polypodiidae, two to Pinidae and 1365 to Magnoliidae (three paleoherbs, 221 monocots and 1144 eudicots). The most represented orders, families and genera are highlighted in Table 1. Seven genera are endemic to Italy: *Castroviejoa* Galbany *et al.* (2004: 133) (Asteraceae), *Eokochia* Freitag & G.Kadereit in Kadereit & Freitag (2011: 72) (Amaranthaceae), *Morisia* J.Gay in Colla (1830: 50) (Brassicaceae), *Nananthea* Candolle (1838: 45) (Asteraceae), *Petagnaea* Caruel (1894: 257), *Rhizobotrya* Tausch (1836: 33) and *Siculosciadium* C.Brullo, Brullo, S.R.Downie & Giusso (2013c: 11) (Apiaceae).

TABLE 1. Most represented orders (> 30 taxa), families (> 30 taxa) and genera (> 15 taxa) among Italian endemics.

order	taxa	family	taxa	genus	taxa
Asterales	324	Asteraceae	299	<i>Limonium</i> Mill.	98
Caryophyllales	214	Plumbaginaceae	113	<i>Centaurea</i> L.	74
Asparagales	142	Caryophyllaceae	94	<i>Hieracium</i> L.	65
Lamiales	98	Orchidaceae	81	<i>Ophrys</i> L.	59
Fabales	92	Fabaceae	80	<i>Ranunculus</i> L.	33
Brassicales	76	Brassicaceae	76	<i>Genista</i> L.	29
Poales	67	Poaceae	60	<i>Dianthus</i> L.	27
Ranunculales	60	Ranunculaceae	59	<i>Silene</i> L.	27
Malpighiales	49	Apiaceae	38	<i>Taraxacum</i> F.H.Wigg.	22
Rosales	45	Rosaceae	37	<i>Viola</i> L.	20
Apiales	38	Boraginaceae	34	<i>Allium</i> L.	19
Boraginales	34	Lamiaceae	34	<i>Campanula</i> L.	19
Gentianales	32			<i>Festuca</i> L.	17

No endemic species occurs in all 20 Italian regions. The most widespread endemic species / subspecies (Fig. 2) are *Aquilegia dumeticola* Jordan (1861: 454) (Ranunculaceae; 15 regions), *Hypochaeris robertia* (Schultz 1845: 127; 15 regions) Fiori in Fiori & Béguinot (1910: 655) (Asteraceae), *Arenaria bertolonii* Fiori & Paoletti (1898: 346) (Caryophyllaceae; 13 regions, see also Iamónico, 2013b), *Pulmonaria hirta* Linnaeus (1763: 1667) subsp. *apennina* (Cristof. & Puppi in Puppi & Cristofolini 1996: 17) Peruzzi in Bernardo *et al.* (2010: 531) (Boraginaceae; 13 regions), *Ranunculus apenninus* (Chiovenda 1892: 295) Pignatti (1983: 84) (Ranunculaceae; 13 regions) and *Scabiosa uniseta* Savi (1798: 167) (Caprifoliaceae; 13 regions). In contrast ca. 58% of the taxa (791) are narrow endemics whose occurrence is restricted to just one region, and more than half of these are restricted to Sardinia and Sicily (Table 2), the two largest Mediterranean islands. The three most endemic-rich regions of continental Italy are Calabria, Abruzzo and Tuscany. A significant number of the species and/or subspecies also occur in

Corsica (106), eight in Malta, and just one in both Corsica and Malta. Within continental Italy, north western Italy includes 58 Italian endemic taxa; north eastern Italy, 145 taxa; the northern Italian peninsula, 216 taxa; the central Italian peninsula, 299; and the southern Italian peninsula, 388. An UPGMA cluster analysis (Fig. 3) provides evidence for the separation on biogeographical grounds of Sardinia from the rest of Italy (0.85 dissimilarity) and Sicily (0.7 dissimilarity) (Fig. 3).

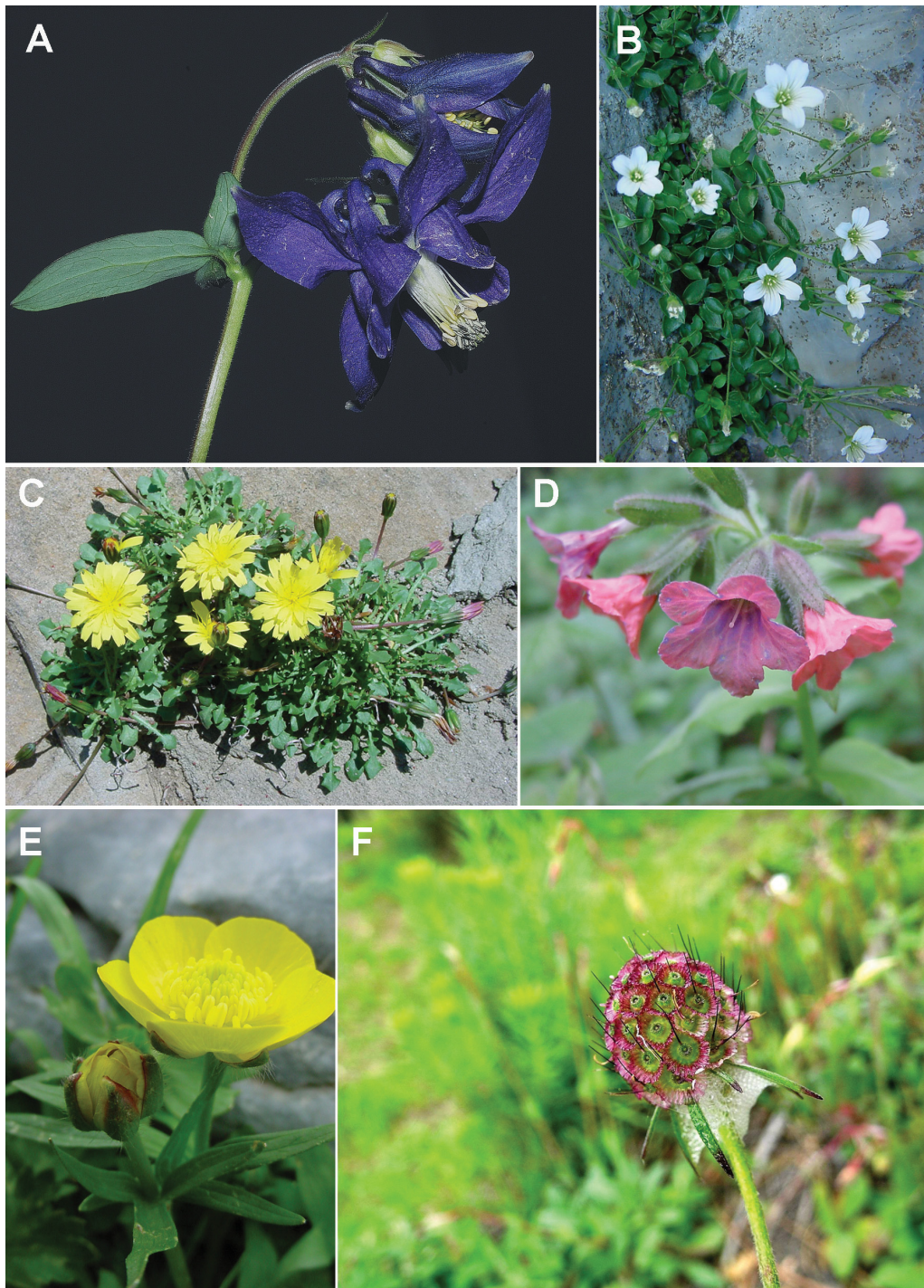


FIGURE 2. The most widespread Italian endemic taxa, occurring in at least 13 regions: *Aquilegia dumeticola* Jord. (Ranunculaceae), photographed in Montalbano, Tuscany (A); *Arenaria bertolonii* Fiori & Paol. (Caryophyllaceae), photographed in Monte Pollino, Calabria (B); *Hypochaeris robertia* (Sch.Bip.) Fiori (Asteraceae), photographed in Gran Sasso, Abruzzo (C); *Pulmonaria hirta* L. subsp. *apennina* (Cristof. & Puppi) Peruzzi (Boraginaceae), photographed in Catena Costiera, Calabria (D); *Ranunculus apenninus* (Chiov.) Pignatti (Ranunculaceae), photographed in Monte Pollino, Calabria (E); *Scabiosa uniseta* Savi (Caprifoliaceae), photographed in Monte Pisano, Tuscany (F). Pictures by L. Peruzzi, except A and F, courtesy of G. Gestri and B. Pierini, respectively.

TABLE 2. Occurrence of Italian endemics in the regions of Italy.

Region	N° strict regional endemics	N° Italian endemics	% strict regional endemics to Italian endemics
Sicily	262	400	65.5
Sardinia	180	322	55.9
Calabria	60	270	22.2
Tuscany	59	191	30.9
Abruzzo	44	227	19.4
Puglia	33	137	24.0
Lombardia	22	71	30.9
Campania	21	177	11.8
Piemonte	19	52	36.5
Trentino-Alto Adige	14	73	19.2
Veneto	15	68	22.1
Liguria	13	65	20.0
Lazio	12	190	6.3
Marche	13	127	10.3
Friuli-Venezia Giulia	10	29	34.5
Basilicata	6	190	3.1
Emilia-Romagna	5	75	6.7
Valle d'Aosta	5	10	50
Molise	0	125	0
Umbria	0	103	0

Principal Coordinate Analysis gives substantially the same results (data not shown). As regards the regions in the southern part of the Italian peninsula, Puglia is placed in a distinct cluster with a 0.45 dissimilarity level, while Campania, Basilicata, and Calabria form a single cluster (Fig. 3).

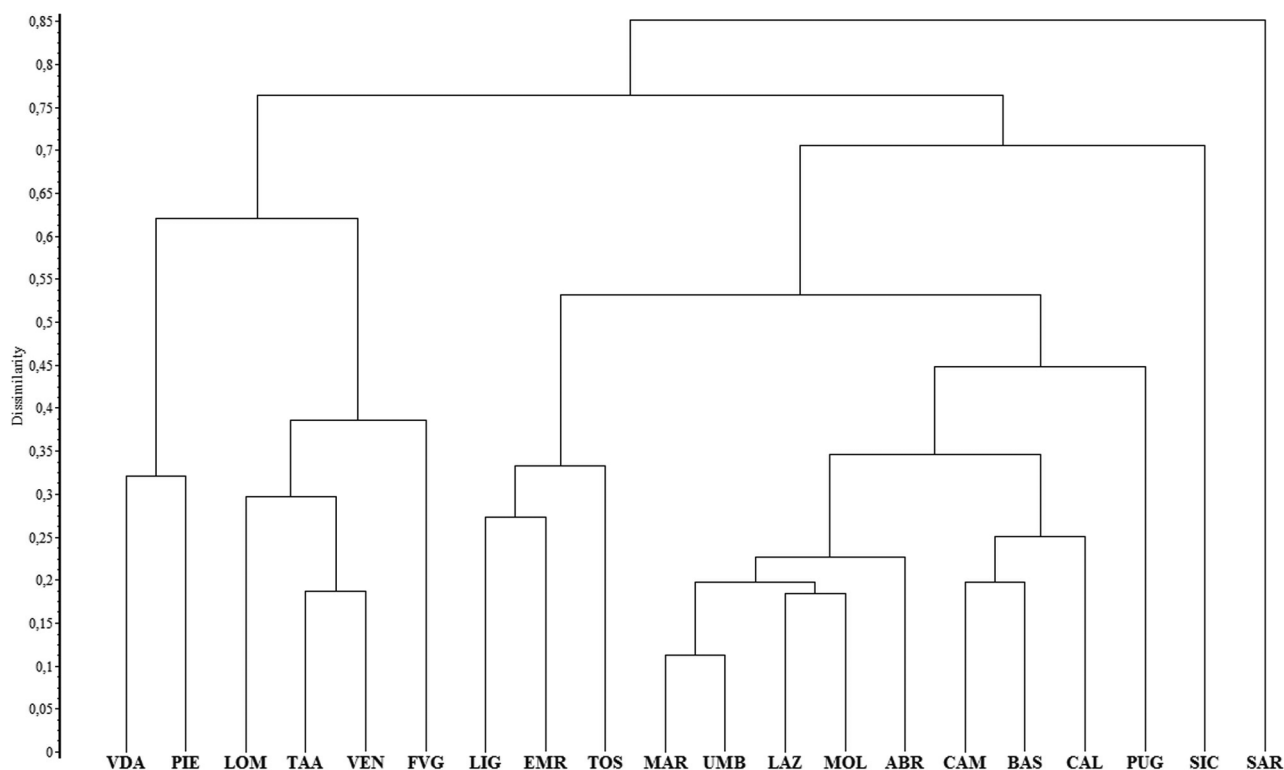


FIGURE 3. UPGMA Cluster Analysis of Italian OGU (corresponding to the administrative regions). Valle d'Aosta, VDA; Piemonte, PIE; Lombardia, LOM; Trentino-Alto Adige, TAA; Veneto, VEN; Friuli-Venezia Giulia, FVG; Liguria, LIG; Emilia-Romagna, EMR; Tuscany, TOS; Marche, MAR; Umbria, UMB; Lazio, LAZ; Abruzzo, ABR; Molise, MOL; Puglia, PUG; Campania, CAM; Basilicata, BAS; Calabria, CAL; Sicily, SIC; Sardinia, SAR.

Discussion

The Italian endemic taxa correspond to 18.9% of the whole flora (F. Conti and collaborators, in prep.). In a similar analysis of the endemic flora of Morocco, Rankou *et al.* (2013) obtained a higher percentage (22%) with lower absolute figures (879 instead of 1371). This difference between the two countries is also evident when the genera *Limonium* Miller (1754: without pagination), *Centaurea* Linnaeus (1753: 909) and *Hieracium* are considered. These are by far the most represented genera of Italian endemic taxa, while in Morocco the richest genera in endemics are *Teucrium* Linnaeus (1753: 562), *Silene* Linnaeus (1753: 416) and *Ononis* Linnaeus (1753: 716). This is easily explained by the fact that Morocco includes at least three floristic elements, only one of which is shared with Italy. In comparison with the Alpine, Spanish and Turkish floras, Aeschimann *et al.* (2011) reported 11.1% endemism for the Alpine flora; Aedo *et al.* (2013) reported 21% endemism for the Spanish flora; whilst Özhatay *et al.* (2013) reported up to 35% endemism in the Turkish flora. Hence the degree of endemism for Italy is in-line with these floras, especially considering that ours is a conservative estimate (no subspecies of *Hieracium*, no hybrids or varieties were considered). Concerning the taxonomic composition of endemics, Campanulaceae, Saxifragaceae, Caprifoliaceae and the genera *Saxifraga* Linnaeus (1753: 398), *Festuca* Linnaeus (1753: 73) and *Campanula* Linnaeus (1753: 163) dominate the Alpine flora (Aeschimann *et al.* 2011) highlighting differences at family and genus rank to our dataset.

Our analysis of the biogeographic affinities of the Italian regions based on the endemic vascular flora is congruent with the results obtained from a dataset concerning native woody flora (trees and shrubs) published by Abbate *et al.* (2012), and with a preliminary study of the whole Italian vascular flora by Blasi *et al.* (2007). In agreement with these findings, our results confirm the phytogeographic isolation of Sardinia and Sicily and the distinctiveness of the peninsular regions compared to those set in the Po valley or Alpine area.

Sardinia and Sicily show endemism ranging from 7% to 9.5%, respectively (F. Conti and collaborators, in prep.) which is in line with the general trend of endemism for single Mediterranean islands (around 10%, Domina *et al.* 2012b). The relative isolation of Puglia with respect to other southern Italian peninsular regions confirms its distinctive phytogeographical character marked by many eastern Mediterranean species (see Peruzzi & Caparelli, Wagensommer *et al.* 2014 and literature cited therein). The high frequency of endemics occurring in Abruzzo, Calabria and Tuscany can be explained by the highest peaks of the Apennines in Abruzzo (Gran Sasso d'Italia, 2912 m a.s.l.), the location of Calabria at the extreme southern tip of Italy (peninsula effect) and the isolated limestone massif of the Apuan Alps of Tuscany. Also the Tuscan Archipelago includes Elba, which is the third major Italian island after Sicily and Sardinia. Alpine endemics (northern Italy) are underrepresented due to the mostly artificial nature of the northern Italian administrative borders. However, a specific study for the Alpine portion of the Italian flora is available which includes also trans-national endemics (Aeschimann *et al.* 2011).

Recent research has shown the importance of the Sardinian endemic flora in a phytogeographic (Bacchetta & Pontecorvo 2005, Fenu *et al.* 2010) and conservation-oriented analysis (Bacchetta *et al.* 2012c-d). Similar analyses were performed for Sicily (Brullo *et al.* 2011, Bonanno 2013) and Tuscany (Peruzzi *et al.* 2012) but such studies are missing for most of the Italian regions and so there is an obvious need for further research to fill this gap. We recommend that biosystematic investigations should be intensified since for instance no chromosome count is recorded for 45% of Italian endemics (Bedini *et al.* 2012). We hope that, as has occurred in Bulgaria (Petrova & Vladimirov 2010) and Greece (Trigas *et al.* 2012), the present work will prompt further conservation-oriented research, the prioritization of species for conservation (Bacchetta *et al.* 2012c, Schatz *et al.* 2013) and red-listing (Rossi *et al.* 2013).

The dataset of Italian endemics will be continuously updated and is freely available by accessing the Google Drive document "Italian vascular plant endemics" at <https://docs.google.com/spreadsheets/ccc?key=0AiJpWnsqul0MdG1hSkk1azBjN3BoLXB4VTAzc311Smc#gid=0>.

Checklist of endemic Italian vascular flora

LYCOPODIIDAE

Isoetales

Isoetaceae

Isoetes malinverniana Ces. & De Not.

NW Italy (PIE); NE Italy (LOM)

Isoetes sabatina Troia & Azzella

C Italian peninsula (LAZ)

Isoetes todaroana Troia & Raimondo

S Italian peninsula (PUG, CAL, SIC). Note: in agreement with Peruzzi & Bernardo (2011), we consider *I. iapygia* Ernandes *et al.* (2010: 807) as a later heterotypic synonym of *I. todaroana* Troia & Raimondo (2009: 138). We also feel that the further arguments presented by Ernandes & Marchiori (2012) in support of an eventual specific distinction of these two taxa are not sufficient and incomplete in geographic sampling (similar doubts are expressed also by Troia & Greuter 2014).

POLYPODIIDAE

Polypodiales

Aspleniaceae

Asplenium adulterinum Milde subsp. *presolanense* Mokry, Rasbach & Reichst.

NE Italy (LOM)

PINIDAE

Pinales

Pinaceae

Abies nebrodensis (Lojac.) Mattei

SIC

Pinus nigra Arn. subsp. *laricio* Palib. ex Maire

N Italian peninsula (TOS); S Italian peninsula (CAL); SIC (Corsica)

MAGNOLIIDAE

Piperales

Aristolochiaceae

Aristolochia clusii Lojac.

S Italian peninsula (PUG, BAS, CAL); SIC (Malta)

Aristolochia sicula Tineo

SIC

Aristolochia tyrrhena E.Nardi & Arrigoni
SAR (Corsica)

Alismatales

Araceae

Arum apulum (Carano) P.C.Boyce
S Italian peninsula (PUG)

Liliales

Colchicaceae

Colchicum arenasii Fridl.
SAR (Corsica)

Colchicum gonarei Camarda
SAR

Colchicum gracile K.Perss.
S Italian peninsula (BAS, CAL)

Colchicum nanum K.Perss.
SAR (Corsica)

Colchicum neapolitanum (Ten.) Ten.
NW Italy (PIE); N Italian peninsula (LIG, TOS); C Italian peninsula (LAZ, ABR, MOL); S Italian peninsula (PUG, CAM, BAS, CAL); SIC; SAR

Colchicum verlaqueae Fridl.
SAR

Liliaceae

Gagea chrysantha Schult. & Schult.f.
SIC

Gagea peruzzii J.-M.Tison
S Italian peninsula (BAS, CAL)

Gagea sicula Lojac.
SIC

Gagea tisoniana Peruzzi, Bartolucci, Frignani & Minut.
N Italian peninsula (TOS); C Italian peninsula (MAR, UMB, LAZ)

Asparagales

Amaryllidaceae

Acis rosea (F.Martin bis) Sweet
SAR (Corsica)

Allium aetnense Brullo, Pavone & Salmeri
SIC

Allium agrigentinum Brullo & Pavone
SIC

- Allium anzalonei* Brullo, Pavone & Salmeri
N Italian peninsula (TOS); C Italian peninsula (LAZ)
- Allium apulum* Brullo, Guglielmo, Pavone & Salmeri
S Italian peninsula (PUG)
- Allium calabrum* (N.Terracc.) Brullo, Pavone & Salmeri
C Italian peninsula (ABR); S Italian peninsula (CAM, BAS, CAL)
- Allium castellanense* (Garbari, Miceli & Raimondo) Brullo, Guglielmo, Pavone & Salmeri
SIC
- Allium diomedeaum* Brullo, Guglielmo, Pavone & Salmeri
S Italian peninsula (PUG)
- Allium francinae* Brullo & Pavone
SIC
- Allium garbarii* Peruzzi
S Italian peninsula (CAL)
- Allium garganicum* Brullo, Pavone, Salmeri & Terrasi
S Italian peninsula (PUG)
- Allium hemisphaericum* (Sommier) Brullo
SIC
- Allium insubricum* Boiss. & Reut. ex Reut.
NE Italy (LOM)
- Allium julianum* Brullo, Gangale & Uzunov
S Italian peninsula (CAL)
- Allium lehmannii* Lojac.
SIC
- Allium lopadusanum* Bartolo, Brullo & Pavone
SIC
- Allium nebrodense* Guss.
SIC
- Allium parciflorum* Viv.
SAR (Corsica)
- Allium pentadactyli* Brullo, Pavone & Spamp.
S Italian peninsula (CAL)
- Allium sphaerocephalon* L. subsp. *laxiflorum* (Guss.) Giardina & Raimondo
SIC
- Narcissus etruscus* Parl.
N Italian peninsula (TOS)
- Narcissus supramontanus* Arrigoni subsp. *cunicularium* Arrigoni
SAR
- Narcissus supramontanus* Arrigoni subsp. *supramontanus*
SAR
- Pancreatium illyricum* L.
C Italian peninsula (TOS); SAR (Corsica)
- Asparagaceae
- Bellevalia dubia* (Guss.) Kunth
SIC
- Bellevalia pelagica* C.Brullo, Brullo & Pasta
SIC

Bellevalia webbiana Parl.
 N Italian peninsula (EMR, TOS)

Charybdis glaucophylla Bacch., Brullo, D'Emérico, Pontec. & Salmeri
 SAR

Muscari botryoides (L.) Mill. subsp. *longifolium* (Rigo) Garbari
 NE Italy (LOM, VEN)

Muscari gussonei (Parl.) Tod.
 SIC

Oncostema dimartinoi (Brullo & Pavone) F.Conti & Soldano
 SIC

Oncostema sicula (Tineo ex Guss.) Speta
 SIC

Ornithogalum corsicum Jord. & Fourr.
 SAR (Corsica)

Ornithogalum etruscum Parl. subsp. *etruscum*
 N Italian peninsula (LIG, TOS); C Italian peninsula (MAR, UMB, LAZ, ABR, MOL)

Ornithogalum etruscum Parl. subsp. *umbratile* (Tornad. & Garbari) Peruzzi & Bartolucci
 N Italian peninsula (EMR, TOS); C Italian peninsula (LAZ); S Italian peninsula (PUG)

Ornithogalum exscapum Ten.
 N Italian peninsula (LIG, EMR, TOS); C Italian peninsula (LAZ, ABR, MOL); S Italian peninsula (PUG, CAM, BAS, CAL); SIC

Ornithogalum orthophyllum Ten. subsp. *orthophyllum*
 C Italian peninsula (MAR, ABR); S Italian peninsula (PUG, BAS, CAL)

Prospero corsicum (Boullu) J.-M.Tison
 SAR (Corsica)

Prospero hieerae Brullo, C.Brullo, Giusso, Pavone & Salmeri
 SIC

Iridaceae

Crocus etruscus Parl.
 N Italian peninsula (TOS)

Crocus ilvensis Peruzzi & Carta
 N Italian peninsula (TOS)

Crocus imperati Ten.
 C Italian peninsula (UMB, LAZ, ABR not confirmed); S Italian peninsula (CAM, BAS not confirmed, CAL doubtful)

Crocus minimus Redouté
 N Italian peninsula (TOS extinct); SAR (Corsica)

Crocus siculus Tineo ex Guss.
 SIC

Crocus suaveolens Bertol.
 C Italian peninsula (UMB, LAZ, ABR doubtful); S Italian peninsula (CAM)

Iris bicapitata Colas.
 S Italian peninsula (PUG)

Iris calabra (N.Terracc.) Peruzzi
 S Italian peninsula (CAL)

Iris cengialti Ambrosi ex A.Kern. subsp. *cengialti*
 NE Italy (LOM, TAA, VEN)

- Iris cengialti* Ambrosi ex A.Kern. subsp. *veneta* (Pamp.) Trinajstić
NE Italy (VEN)
- Iris marsica* I.Ricci & Colas.
C Italian peninsula (MAR, UMB, LAZ, ABR, MOL)
- Iris pseudopumila* Tineo
C Italian peninsula (MOL); S Italian peninsula (PUG, CAM not confirmed, BAS); SIC (Malta)
- Iris relictata* Colas.
C Italian peninsula (LAZ, MOL); S Italian peninsula (CAM not confirmed)
- Iris revoluta* Colas.
S Italian peninsula (PUG)
- Iris sabina* N.Terracc.
C Italian peninsula (LAZ)
- Iris setina* Colas.
C Italian peninsula (LAZ)
- Romulea bocchierii* Frignani & Iiriti
SAR
- Romulea insularis* Sommier
N Italian peninsula (TOS)
- Romulea linaresii* Parl. subsp. *linaresii*
SIC
- Romulea melitensis* Bég.
SIC (Malta)
- Romulea requienii* Parl.
SAR (Corsica)
- Romulea revelierei* Jord. & Fourr.
SAR (Corsica)

Orchidaceae

- Epipactis autumnalis* Doro
NE Italy (VEN)
- Epipactis cupaniana* C.Brullo, D'Emerico & Pulv.
SIC
- Epipactis greuteri* H.Baumann & Künkele subsp. *flaminia* (P.R.Savelli & Aless.) H.Baumann, Künkele & R.Lorenz
N Italian peninsula (EMR, TOS)
- Epipactis helleborine* (L.) Crantz subsp. *aspromontana* (Bartolo, Pulv. & Robatsch) H.Baumann & R.Lorenz
S Italian peninsula (PUG, CAL)
- Epipactis helleborine* (L.) Crantz subsp. *schubertiorum* (Bartolo, Pulv. & Robatsch) Kreutz
S Italian peninsula (PUG, CAL)
- Epipactis ioessa* Bongiorno, De Vivo, Fori & Romolini
S Italian peninsula (BAS, CAL doubtful)
- Epipactis meridionalis* H.Baumann & R.Lorenz
C Italian peninsula (LAZ, ABR); S Italian peninsula (PUG, CAM, BAS, CAL); SIC
- Epipactis nordenorium* Robatsch subsp. *maricae* Croce, Bongiorno, De Vivo & Fori
S Italian peninsula (CAM)
- Epipactis savelliana* Bongiorno, De Vivo & Fori
C Italian peninsula (ABR)

- Epipactis tallosii* A. Molnár & Robatsch subsp. *zaupolensis* Barbaro & Kreutz
NE Italy (FVG)
- Epipactis thesaurensis* Agrezzi, Ovatoli & Bongiorno
NE Italy (VEN)
- Limodorum brulloi* Bartolo & Pulv.
S Italian peninsula (CAL)
- Liparis loeselii* (L.) Rich. subsp. *nemoralis* Perazza, Decarli, Filippin, Bruna & Regattin
NE Italy (TAA not confirmed, VEN, FVG)
- Nigritella buschmanniae* Teppner & Ster
NE Italy (TAA)
- Ophrys annae* Devillers-Tersch. & Devillers
SAR (Corsica)
- Ophrys appennina* Romolini & Soca
NW Italy (PIE); N Italian peninsula (LIG, TOS, EMR); C Italian peninsula (MAR, UMB, LAZ, ABR, MOL); S Italian peninsula (CAM, BAS, CAL)
- Ophrys apulica* (O.Danesch & E.Danesch) O.Danesch & E.Danesch
S Italian peninsula (PUG, BAS, CAL); SIC
- Ophrys archimedeae* P.Delforge & M.Walravens
SIC
- Ophrys argentaria* Devillers-Tersch. & Devillers
N Italian peninsula (TOS); C Italian peninsula (LAZ)
- Ophrys ausonia* Devillers, Devillers-Tersch. & P.Delforge
C Italian peninsula (LAZ, ABR)
- Ophrys bertolonii* Moretti subsp. *bertoloniiiformis* (O.Danesch & E.Danesch) H.Sund
S Italian peninsula (PUG)
- Ophrys bertolonii* Moretti subsp. *explanata* (Lojac.) Soca
SIC
- Ophrys biscutella* O.Danesch & E.Danesch
S Italian peninsula (PUG, CAM, BAS, CAL)
- Ophrys brutia* P.Delforge
C Italian peninsula (UMB, LAZ, ABR, MOL); S Italian peninsula (PUG, CAM, BAS, CAL)
- Ophrys calliantha* Bartolo & Pulv.
SIC
- Ophrys chestermanii* (J.J.Wood) Gözl & H.R.Reinhard
SAR
- Ophrys cinnabarina* Romolini & Soca
S Italian peninsula (PUG, BAS)
- Ophrys crabronifera* Mauri
N Italian peninsula (TOS); C Italian peninsula (MAR, UMB, LAZ, ABR, MOL); S Italian peninsula (CAM)
- Ophrys discors* Bianca
SIC
- Ophrys exaltata* Ten. subsp. *exaltata*
S Italian peninsula (CAM, BAS, CAL), SIC
- Ophrys exaltata* Ten. subsp. *montis-leonis* (O.Danesch & E.Danesch) Soca
N Italian peninsula (LIG, TOS); C Italian peninsula (UMB, LAZ)
- Ophrys exaltata* Ten. subsp. *morisii* (Martelli) Del Prete
SAR

- Ophrys flammeola* P.Delforge
SIC
- Ophrys fuciflora* (F.W.Schmidt) Moench subsp. *lorenae* E.De Martino & Centur.
N Italian peninsula (EMR)
- Ophrys gackiae* P.Delforge
SIC
- Ophrys laurensis* Geniez & Melki
SIC
- Ophrys lepida* S.Moingeon & J.-M.Moingeon
SAR
- Ophrys lojaconoi* P.Delforge
S Italian peninsula (PUG, BAS, CAL doubtful)
- Ophrys lucana* P.Delforge, Devillers-Tersch. & Devillers
C Italian peninsula (LAZ, ABR, MOL); S Italian peninsula (PUG, CAM, BAS, CAL)
- Ophrys lucifera* Devillers-Tersch. & Devillers
N Italian peninsula (TOS); C Italian peninsula (PUG)
- Ophrys lumulata* Parl.
SIC
- Ophrys maritima* Pacifico & Soca
N Italian peninsula (LIG, TOS)
- Ophrys mattinatae* Medagli, A.Rossini, Quitadamo, D'Emérico & Turco
S Italian peninsula (PUG)
- Ophrys minipassionis* Romolini & Soca
N Italian peninsula (EMR, TOS); C Italian peninsula (MAR, UMB, LAZ, ABR, MOL); S Italian peninsula (PUG)
- Ophrys mirabilis* Geniez & Melki
SIC
- Ophrys murgiana* Cillo, Medagli & Margh.
S Italian peninsula (PUG)
- Ophrys normanii* J.J.Wood
SAR
- Ophrys obaesa* Lojac.
SIC
- Ophrys oestriifera* M.Bieb. subsp. *montis-gargani* Van de Vijver & W.Looken
S Italian peninsula (PUG)
- Ophrys ortuabis* M.P.Grasso & Manca
SAR
- Ophrys oxyrrhynchos* Tod. subsp. *celiensis* (O.Danesch & E.Danesch) Del Prete
S Italian peninsula (PUG, BAS, CAL)
- Ophrys oxyrrhynchos* Tod. subsp. *ingrassiae* Dura, Turco, Gennaio & Medagli
S Italian peninsula (PUG)
- Ophrys oxyrrhynchos* Tod. subsp. *oxyrrhynchos*
SIC
- Ophrys pallida* Raf.
SIC
- Ophrys panattensis* Scrugli, Cogoni & Pessei
SAR
- Ophrys panormitana* (Tod.) Soó
SIC; SAR

- Ophrys parvimaculata* (O.Danesch & E.Danesch) Paulus & Gack
S Italian peninsula (PUG, BAS, CAL)
- Ophrys passionis* Sennen ex Devillers-Tersch. & Devillers subsp. *majellensis* (Helga Daiss & Herm.Daiss) Romolini & Soca
N Italian peninsula (TOS); C Italian peninsula (LAZ, ABR, MOL)
- Ophrys peucetiae* Lozito, D'Emerico, Medagli & Turco
S Italian peninsula (PUG)
- Ophrys pinguis* Romolini & Soca
N Italian peninsula (TOS); C Italian peninsula (LAZ, ABR)
- Ophrys pollinensis* E.Nelson ex Devillers-Tersch. & Devillers
S Italian peninsula (CAM)
- Ophrys promontorii* O.Danesch & E.Danesch
C Italian peninsula (LAZ, ABR, MOL); S Italian peninsula (PUG, CAM)
- Ophrys pseudoatrata* S.Hertel & Presser
S Italian peninsula (BAS)
- Ophrys pseudomelena* Turco, Medagli & D'Emerico
S Italian peninsula (PUG)
- Ophrys romolinii* Soca
N Italian peninsula (EMR, TOS); C Italian peninsula (MAR, UMB, LAZ, ABR, MOL); S Italian peninsula (PUG, CAM, BAS, CAL); SIC
- Ophrys sipontensis* (Gumprecht) O.Danesch & E.Danesch
S Italian peninsula (PUG, CAM)
- Ophrys sphegodes* Mill. subsp. *grassoana* Cristaudo, Galesi & R.Lorenz & Zelesny
SIC
- Ophrys tardans* O.Danesch & E.Danesch
S Italian peninsula (PUG)
- Ophrys tarentina* Gözl & H.R.Reinhard
S Italian peninsula (PUG, BAS, CAL)
- Ophrys tarquinia* P.Delforge
N Italian peninsula (TOS); C Italian peninsula (LAZ); S Italian peninsula (PUG)
- Ophrys tenthredinifera* Willd. subsp. *aprilia* (Devillers & Devillers-Tersch.) Kreutz
SAR (Corsica)
- Ophrys tenthredinifera* Willd. subsp. *grandiflora* (Ten.) Kreutz
S Italian peninsula (CAL); SIC
- Ophrys tenthredinifera* Willd. subsp. *neglecta* (Parl.) E.G.Camus
NW Italy (PIE), N Italian peninsula (TOS); C Italian peninsula (MAR, UMB, LAZ, ABR); S Italian peninsula (MOL, CAM, BAS, PUG, CAL); SAR (Corsica)
- Orchis brancifortii* Biv.
S Italian peninsula (CAL); SIC; SAR
- Orchis mascula* (L.) L. subsp. *ichnusae* Corrias
SAR
- Serapias cossyrensis* B.Baumann & H.Baumann
SIC
- Serapias francavillae* Cristaudo, Galesi & R.Lorenz
SIC
- Serapias intermedia* Forest ex F.W.Schultz subsp. *hyblaea* Cristaudo, Galesi & R.Lorenz
SIC
- Serapias nurrica* Corrias subsp. *santuingensis* (Senis, M.P.Grasso & Orrù) Senis, M.P.Grasso & Orrù
SAR

Serapias orientalis (Greuter) H.Baumann & Künkele subsp. *apulica* H.Baumann & Künkele

S Italian peninsula (PUG)

Serapias orientalis (Greuter) H.Baumann & Künkele subsp. *siciliensis* Bartolo & Pulv.

SIC

Poales

Cyperaceae

Carex macrostachys Bertol.

N Italian peninsula (LIG, EMR, TOS)

Carex microcarpa Bertol. ex Moris

N Italian peninsula (TOS); C Italian peninsula (LAZ, ABR); S Italian peninsula (PUG doubtful); SAR (Corsica)

Carex panormitana Guss.

SIC; SAR

Cyperus papyrus L. subsp. *siculus* (Parl.) Chiov.

SIC

Juncaceae

Luzula calabra Ten.

S Italian peninsula (CAL)

Luzula spicata (L.) DC. subsp. *italica* (Parl.) Arcang.

SAR (Corsica)

Luzula sylvatica (Huds.) Gaudin subsp. *sicula* (Parl.) K.Richt.

C Italian peninsula (MAR doubtful, ABR); S Italian peninsula (PUG, CAM, BAS, CAL); SIC

Poaceae

Agrostis canina L. subsp. *aspromontana* Brullo, Scelsi & Spamp.

S Italian peninsula (CAL)

Agrostis canina L. subsp. *monteluccii* Selvi

N Italian peninsula (TOS); C Italian peninsula (LAZ); S Italian peninsula (CAM)

Arrhenatherum elatius (L.) P.Beauv. ex J.Presl & C.Presl subsp. *nebrodensis* (Brullo, Miniss. & Spamp.) Giardina & Raimondo

SIC

Bellardiochloa variegata (Lam.) Kerguélen subsp. *aetnensis* (C.Presl) Giardina & Raimondo

SIC

Bellardiochloa variegata (Lam.) Kerguélen subsp. *nebrodensis* (Asch. & Graebn.) C.Brullo, Brullo, Giusso & Sciandrello

SIC

Brachypodium genuense (DC.) Roem. & Schult.

NW Italy (PIE); N Italian peninsula (LIG, EMR, TOS); C Italian peninsula (MAR, UMB, LAZ, ABR, MOL); S Italian peninsula (CAM, BAS, CAL)

Calamagrostis corsica (Hack. ex Briq.) D.Prain

N Italian peninsula (EMR, TOS); (Corsica)

Desmazeria pignattii Brullo & Pavone

SIC (Malta)

- Drymochloa drymeja* (Mert. & W.D.J.Koch) Holub subsp. *exaltata* (C.Presl) Foggi & Signorini
C Italian peninsula (LAZ, ABR, MOL); S Italian peninsula (PUG, CAM, BAS, CAL); SIC
- Elytrigia corsica* (Hack.) Holub
SAR (Corsica)
- Festuca alfrediana* Foggi & Signorini subsp. *alfrediana*
SAR (Corsica)
- Festuca alfrediana* Foggi & Signorini subsp. *ferrariniana* Foggi, Parolo & Gr.Rossi
N Italian peninsula (LIG, EMR, TOS); C Italian peninsula (MAR, UMB, LAZ, ABR, MOL); S Italian peninsula (CAM, CAL)
- Festuca apuanica* Markgr.-Dann.
N Italian peninsula (TOS)
- Festuca austrodolomitica* Pils & Prosser
NE Italy (TAA, VEN)
- Festuca centroapenninica* (Markgr.-Dann.) Foggi, F.Conti & Pignatti
N Italian peninsula (TOS); C Italian peninsula (MAR, UMB, LAZ, ABR)
- Festuca gamisansii* Kerguelen subsp. *aethaliae* Signorini & Foggi
N Italian peninsula (TOS)
- Festuca humifusa* Brullo & Guarino
SIC
- Festuca imperatrix* Catonica
C Italian peninsula (ABR)
- Festuca morisiana* Parl. subsp. *morisiana*
SAR
- Festuca morisiana* Parl. subsp. *sicula* Cristaudo, Foggi, Galesi & Maugeri
SIC
- Festuca pignattiorum* Markgr.-Dann.
SIC
- Festuca riccerii* Foggi & Gr.Rossi
N Italian peninsula (LIG, EMR, TOS)
- Festuca robustifolia* Markgr.-Dann.
NW Italy (PIE); N Italian peninsula (LIG, EMR, TOS)
- Festuca sardoa* (Hack.) K.Richt.
SAR (Corsica)
- Festuca veneris* Gr.Rossi, Foggi & Signorini
N Italian peninsula (LIG)
- Festuca violacea* Ser. ex Gaudin subsp. *italica* Foggi, Gr.Rossi & Signorini
C Italian peninsula (MAR, UMB, LAZ, ABR, MOL); S Italian peninsula (CAM, BAS, CAL)
- Festuca violacea* Ser. ex Gaudin subsp. *puccinellii* (Parl.) Foggi, Gr.Rossi & Signorini
N Italian peninsula (EMR, TOS)
- Helictochloa praetutiana* (Parl. ex Arcang.) Bartolucci, F.Conti, Peruzzi & Banfi subsp. *praetutiana*
N Italian peninsula (EMR, TOS); C Italian peninsula (MAR, UMB, LAZ, ABR, MOL); S Italian peninsula (CAM, BAS, CAL)
- Helictochloa praetutiana* (Parl. ex Arcang.) Bartolucci, F.Conti, Peruzzi & Banfi subsp. *rigida* (Sarfatti) Bartolucci, F.Conti, Peruzzi & Banfi
S Italian peninsula (CAL)
- Holcus notarisii* Nyman
N Italian peninsula (LIG not confirmed)
- Koeleria lucana* Brullo, Giusso & Miniss.
S Italian peninsula (BAS)

- Koeleria splendens* C.Presl
N Italian peninsula (LIG, TOS); C Italian peninsula (MAR, UMB, LAZ, ABR, MOL); S Italian peninsula (CAM, CAL); SIC
- Leucopoa calabrica* (Huter, Porta & Rigo) H.Scholz & Foggi
S Italian peninsula (CAM not confirmed, BAS, CAL)
- Megathyrsus bivonianus* (Brullo, Miniss., Scelsi & Spamp.) Verloove
SIC
- Melica cupanii* Guss. subsp. *cupanii*
C Italian peninsula (LAZ); S Italian peninsula (CAM not confirmed); SIC
- Phalaroides arundinacea* (L.) Rauschert subsp. *rotgesii* (Husn.) Valdés & H.Scholz
SAR
- Phleum sardoum* (Hack.) Hack.
SAR
- Poa balbisii* Parl.
SAR
- Puccinellia gussonei* Parl.
SIC. Note: ongoing studies (M. Iberite & D. Iamónico in prep.) highlight that *P. gussonei* may not deserve taxonomic distinction.
- Sesleria barbaricina* (Arrigoni) Arrigoni
SAR
- Sesleria calabrica* (Deyl) Di Pietro
S Italian peninsula (BAS, CAL)
- Sesleria italica* (Pamp.) Ujhelyi
N Italian peninsula (EMR, TOS); C Italian peninsula (MAR, UMB, LAZ, ABR)
- Sesleria morisiana* (Arrigoni) Arrigoni
SAR
- Sesleria nitida* Ten.
C Italian peninsula (MAR, UMB, LAZ, ABR, MOL); S Italian peninsula (CAM, BAS, CAL); SIC
- Sesleria pichiana* Foggi, Gr.Rossi & Pignotti
NW Italy (PIE); NE Italy (LOM); N Italian peninsula (LIG, EMR, TOS)
- Stipa aquilana* Moraldo
C Italian peninsula (ABR)
- Stipa austroitalica* Martinovský subsp. *appendiculata* (Čelak.) Moraldo
S Italian peninsula (PUG, CAL); SIC
- Stipa austroitalica* Martinovský subsp. *austroitalica*
S Italian peninsula (PUG, CAM, BAS, CAL)
- Stipa austroitalica* Martinovský subsp. *frentana* Moraldo & Ricceri
C Italian peninsula (ABR, MOL)
- Stipa austroitalica* Martinovský subsp. *theresiae* Martinovský & Moraldo
S Italian peninsula (CAL)
- Stipa dasyvaginata* Martinovský subsp. *apennincola* Martinovský & Moraldo
C Italian peninsula (MAR, UMB, LAZ, ABR, MOL); S Italian peninsula (CAM, BAS, CAL)
- Stipa etrusca* Moraldo
N Italian peninsula (EMR, TOS); C Italian peninsula (LAZ extinct)
- Stipa feltrina* Moraldo, Lasen & Argenti
NE Italy (VEN)
- Stipa oligotricha* Moraldo subsp. *kiemii* (Martinovský) Moraldo
S Italian peninsula (PUG)

- Stipa oligotricha* Moraldo subsp. *oligotricha*
S Italian peninsula (PUG, BAS)
- Stipa sicula* Moraldo, la Valva, Ricciardi & Caputo
SIC
- Stipa valdemonensis* Cataldo, S.A.Giardina, Moraldo & Raimondo
SIC
- Stipa veneta* Moraldo
NE Italy (VEN, FVG)
- Trisetaria gracilis* (Moris) Banfi & Arrigoni
SAR (Corsica)
- Trisetaria villosa* (Bertol.) Banfi & Soldano
C Italian peninsula (MAR, UMB, LAZ, ABR, MOL doubtful)

Ranunculales

Berberidaceae

- Berberis vulgaris* L. subsp. *aetnensis* (C.Presl) Rouy & Foucaud
S Italian peninsula (CAM, BAS, CAL); SIC; SAR (Corsica)

Ranunculaceae

- Adonis distorta* Ten.
C Italian peninsula (MAR, UMB, LAZ, ABR)
- Anemonoides trifolia* (L.) Holub subsp. *brevidentata* (Ubaldi & Puppi) Galasso, Banfi & Soldano
NW Italy (PIE); NE Italy (LOM); N Italian peninsula (LIG, EMR, TOS)
- Aquilegia barbaricina* Arrigoni & E.Nardi
SAR
- Aquilegia bertolonii* Schott
N Italian peninsula (TOS)
- Aquilegia champagnatii* Moraldo, E.Nardi & la Valva
S Italian peninsula (CAM)
- Aquilegia cremnophila* Bacch., Brullo, Congiu, Fenu, J.L.Garrido & Mattana
SAR
- Aquilegia dumeticola* Jord.
NW Italy (VDA, PIE); NE Italy (LOM); N Italian peninsula (LIG, EMR, TOS); C Italian peninsula (MAR, UMB, LAZ, ABR, MOL); S Italian peninsula (PUG, CAM, BAS, CAL); (Corsica)
- Aquilegia lucensis* E.Nardi
N Italian peninsula (EMR, TOS)
- Aquilegia magellensis* F.Conti & Soldano
C Italian peninsula (LAZ, ABR, MOL)
- Aquilegia marcelliana* E.Nardi
S Italian peninsula (CAM)
- Aquilegia mugorensis* Arrigoni & E.Nardi
SAR
- Aquilegia nuragica* Arrigoni & E.Nardi
SAR
- Aquilegia ophiolitica* Barberis & E.Nardi
N Italian peninsula (LIG)

- Aquilegia sicula* (Strobl) E.Nardi
SIC
- Aquilegia thalictrifolia* Schott & Kotschy
NE Italy (LOM, TAA, VEN)
- Aquilegia vestinae* Pfenn. & D.M.Moser
NE Italy (LOM, TAA doubtful)
- Aquilegia viscosa* Gouan subsp. *apuana* Marchetti
N Italian peninsula (TOS)
- Callianthemum kernerianum* Freyn ex A.Kern.
NE Italy (TAA, VEN)
- Delphinium emarginatum* C.Presl subsp. *emarginatum*
SIC
- Delphinium longipes* Moris
SAR
- Helleborus lividus* Aiton subsp. *corsicus* (Briq.) P.Fourn.
SAR (Corsica)
- Helleborus viridis* L. subsp. *abruzzicus* (M.Thomsen, McLewin & B.Mathew) Bartolucci, F.Conti & Peruzzi
C Italian peninsula (MAR doubtful, UMB, LAZ, ABR); S Italian peninsula (BAS)
- Helleborus viridis* L. subsp. *bocconei* (Ten.) Peruzzi
N Italian peninsula (EMR, TOS); C Italian peninsula (MAR, UMB, LAZ, ABR, MOL); S Italian peninsula (CAM, BAS, CAL); SIC
- Helleborus viridis* L. subsp. *liguricus* (M.Thomsen, McLewin & B.Mathew) Bartolucci, F.Conti & Peruzzi
N Italian peninsula (LIG, TOS)
- Nigella arvensis* L. subsp. *glaucescens* (Guss.) Greuter & Burdet
S Italian peninsula (PUG not confirmed, CAL not confirmed); SIC; SAR
- Ranunculus abbaianus* Dunkel
NW Italy (PIE)
- Ranunculus angulatus* C.Presl
SIC
- Ranunculus apenninus* (Chiov.) Pignatti
NW Italy (PIE doubtful); NE Italy (LOM); N Italian peninsula (LIG, EMR, TOS); C Italian peninsula (MAR, UMB, LAZ, ABR, MOL); S Italian peninsula (CAM, BAS, CAL doubtful)
- Ranunculus baldensis* Dunkel
NE Italy (TAA, VEN)
- Ranunculus bariscianus* Dunkel
C Italian peninsula (ABR)
- Ranunculus bilobus* Bertol.
NE Italy (LOM, TAA)
- Ranunculus bovioi* Dunkel
NW Italy (VDA)
- Ranunculus braun-blanquetii* Pignatti
NE Italy (TAA, VEN)
- Ranunculus cochlearifer* Dunkel
NE Italy (VEN)
- Ranunculus cordiger* Viv. subsp. *cordiger*
SAR (Corsica)
- Ranunculus cordiger* Viv. subsp. *diffusus* (Moris) Arrigoni
SAR (Corsica)

- Ranunculus cymbalariifolius* Moris
SAR
- Ranunculus fiorii* Pignatti
NE Italy (LOM)
- Ranunculus fraelensis* Dunkel
NE Italy (LOM)
- Ranunculus gortanii* Pignatti
NE Italy (VEN, FVG)
- Ranunculus hostiliensis* Pignatti
NE Italy (VEN)
- Ranunculus luminarius* Rigo ex Pignatti
NE Italy (VEN)
- Ranunculus magellensis* Ten.
C Italian peninsula (LAZ, ABR, MOL)
- Ranunculus marsicus* Guss. & Ten.
C Italian peninsula (ABR, MOL)
- Ranunculus mediogracilis* Dunkel
NE Italy (VEN)
- Ranunculus monspeliacus* L. subsp. *aspromontanus* (Huter) Peruzzi & N.G.Passal.
S Italian peninsula (CAL, SIC)
- Ranunculus multidentis* Dunkel
C Italian peninsula (ABR)
- Ranunculus mutinensis* Pignatti
N Italian peninsula (EMR extinct)
- Ranunculus palaeoeuganeus* Pignatti
NE Italy (TAA, VEN)
- Ranunculus pedemontanus* Dunkel
NW Italy (PIE)
- Ranunculus pedrottii* Spinosi ex Dunkel
C Italian peninsula (MAR, UMB)
- Ranunculus pollinensis* (N.Terracc.) Chiov.
N Italian peninsula (EMR, TOS); C Italian peninsula (MAR, UMB, LAZ, ABR, MOL); S Italian peninsula (CAM, BAS, CAL)
- Ranunculus pratensis* C.Presl
SIC; SAR
- Ranunculus prosseri* Dunkel
NE Italy (TAA)
- Ranunculus revelierei* Boreau
SAR (Corsica)
- Ranunculus silanus* Pignatti
S Italian peninsula (CAL)
- Ranunculus thomasii* Ten.
C Italian peninsula (LAZ, ABR); S Italian peninsula (PUG not confirmed, BAS, CAL)
- Ranunculus venetus* Huter ex Landolt
NE Italy (LOM, TAA, VEN, FVG)
- Thalictrum calabricum* Spreng.
S Italian peninsula (CAM, BAS, CAL); SIC

Saxifragales

Crassulaceae

Jovibarba globifera (L.) J.Parn. subsp. *lagariniana* L.Gallo
NE Italy (TAA, VEN)

Sedum alsinifolium All.
NW Italy (PIE)

Sedum magellense Ten. subsp. *magellense*
C Italian peninsula (MAR, UMB, LAZ, ABR, MOL); S Italian peninsula (CAM, BAS, CAL doubtful)

Sempervivum dolomiticum Facchini
NE Italy (TAA, VEN)

Sempervivum riccii Iberite & Anzal.
C Italian peninsula (MAR doubtful, LAZ, ABR, MOL)

Grossulariaceae

Ribes multiflorum Kit. ex Roem. & Schult. subsp. *sandalioticum* Arrigoni
SAR

Ribes sardoum Martelli
SAR

Paeoniaceae

Paeonia morisii Cesca, Bernardo & N.G.Passal.
SIC; SAR (Corsica)

Paeonia officinalis L. subsp. *italica* N.G.Passal. & Bernardo
C Italian peninsula (MAR, UMB, LAZ, ABR)

Saxifragaceae

Saxifraga arachnoidea Sternb.
NE Italy (LOM, TAA)

Saxifraga berica (Bég.) D.A.Webb
NE Italy (VEN)

Saxifraga corsica (Ser. ex Duby) Gren. & Godr. subsp. *corsica*
N Italian peninsula (TOS doubtful); SAR (Corsica)

Saxifraga depressa Sternb.
NE Italy (TAA, VEN)

Saxifraga exarata Vill. subsp. *ampullacea* (Ten.) D.A.Webb
C Italian peninsula (MAR, UMB, LAZ, ABR, MOL); S Italian peninsula (CAM)

Saxifraga facchinii Koch
NE Italy (TAA, VEN)

Saxifraga hostii Tausch subsp. *rhaetica* (A.Kern. ex Engl.) Braun-Blanq.
NE Italy (LOM, TAA)

Saxifraga italica D.A.Webb
C Italian peninsula (ABR)

Saxifraga oppositifolia L. subsp. *speciosa* (Dörfl. & Hayek) Engl. & Irmsh.
C Italian peninsula (MAR, UMB, LAZ, ABR, MOL)

- Saxifraga pedemontana* All. subsp. *cervicornis* (Viv.) Engl.
SAR (Corsica)
- Saxifraga porophylla* Bertol. subsp. *porophylla*
C Italian peninsula (MAR, UMB, LAZ, ABR, MOL); S Italian peninsula (CAM, BAS, CAL)
- Saxifraga presolanensis* Engl.
NE Italy (LOM)
- Saxifraga sedoides* L. subsp. *tomentosa* (Zenari) Poldini
NE Italy (VEN, FVG)
- Saxifraga tombeanensis* Boiss. ex Engl.
NE Italy (LOM, TAA, VEN)
- Saxifraga vandellii* Sternb.
NE Italy (LOM, TAA)

Fabales

Fabaceae

- Adenocarpus complicatus* (L.) J.Gay subsp. *bivonae* (C.Presl) Peruzzi
SIC
- Adenocarpus complicatus* (L.) J.Gay subsp. *brutius* (Brullo, De Marco & Siracusa) Peruzzi & Bernardo
S Italian peninsula (CAL)
- Adenocarpus complicatus* (L.) J.Gay subsp. *commutatus* (Guss.) Cout.
SIC
- Adenocarpus complicatus* (L.) J.Gay subsp. *samniticus* (Brullo, De Marco & Siracusa) Peruzzi
C Italian peninsula (MAR, LAZ)
- Adenocarpus complicatus* (L.) J.Gay subsp. *tenoreanus* (Brullo, Gangale & Uzunov) Peruzzi & Bernardo
S Italian peninsula (CAL)
- Anthyllis hermanniae* L. subsp. *brutia* Brullo & Giusso
S Italian peninsula (CAL)
- Anthyllis hermanniae* L. subsp. *corsica* Brullo & Giusso
N Italian peninsula (TOS extinct); (Corsica)
- Anthyllis hermanniae* L. subsp. *ichnusae* Brullo & Giusso
SAR
- Anthyllis hermanniae* L. subsp. *japygica* Brullo & Giusso
S Italian peninsula (PUG)
- Anthyllis hermanniae* L. subsp. *sicula* Brullo & Giusso
SIC extinct
- Anthyllis vulneraria* L. subsp. *busambarensis* (Lojac.) Pignatti
SIC
- Astragalus aquilanus* Anzal.
C Italian peninsula (ABR); S Italian peninsula (CAL)
- Astragalus caprinus* L. subsp. *huetii* (Bunge) Podlech
SIC
- Astragalus genargenteus* Moris
SAR
- Astragalus gennarii* Bacch. & Brullo
SAR
- Astragalus kamarinensis* C. Brullo, Brullo, Giusso, Miniss. & Sciandr.
SIC

Astragalus maritimus Moris
 SAR

Astragalus nebrodensis (Guss.) Strobl
 SIC

Astragalus parnassi Boiss. subsp. *calabricus* (Fisch.) Maassoumi
 S Italian peninsula (CAL)

Astragalus raphaelis G.Ferro
 SIC

Astragalus siculus Biv.
 SIC

Astragalus sirinicus Ten.
 NE Italy (LOM, EMR); C Italian peninsula (MAR, UMB, LAZ, ABR, MOL); S Italian peninsula (CAM, BAS, CAL)

Astragalus tegulensis Bacch. & Brullo
 SAR

Astragalus terraccianoii Vals.
 SAR (Corsica)

Astragalus thermensis Vals.
 SAR

Astragalus verrucosus Moris
 SAR

Bituminaria basaltica Miniss., C.Brullo, Brullo, Giusso & Sciandr.
 SIC

Bituminaria morisiana (Pignatti & Metlesics) Greuter
 SAR

Cytisus aeolicus Guss.
 SIC

Cytisus proteus Zumagl.
 NW Italy (PIE); NE Italy (LOM doubtful)

Genista anglica L. subsp. *brutia* (Brullo, Scelsi & Spamp.) Peruzzi & Bernardo
 S Italian peninsula (CAL)

Genista anglica L. subsp. *silana* (Brullo, Gangale & Spamp.) Peruzzi & Bernardo
 S Italian peninsula (CAL)

Genista arbusensis Vals.
 SAR

Genista aristata C.Presl
 SIC

Genista bocchierii Bacch., Brullo & Feoli Chiapella
 SAR

Genista cadasonensis Vals.
 SAR

Genista cilentina Vals.
 S Italian peninsula (CAM)

Genista corsica (Loisel.) DC.
 SAR (Corsica)

Genista cupanii Guss.
 SIC

Genista demarcoi Brullo, Scelsi & Siracusa
 SAR

- Genista desoleana* Vals.
N Italian peninsula (LIG, TOS); SAR (Corsica)
- Genista ephedroides* DC.
SAR
- Genista etnensis* (Biv.) DC.
SIC; SAR
- Genista gasparrinii* (Guss.) C.Presl
SIC
- Genista insularis* Bacch., Brullo & Feoli Chiapella subsp. *fodinae* Bacch., Brullo & Feoli Chiapella
SAR
- Genista insularis* Bacch., Brullo & Feoli Chiapella subsp. *insularis*
SAR
- Genista madoniensis* Raimondo
SIC
- Genista michelii* Spach
C Italian peninsula (MAR); S Italian peninsula (PUG)
- Genista morisii* Colla
SAR
- Genista ovina* Bacch., Brullo & Feoli Chiapella
SAR
- Genista pichisermolliana* Vals.
SAR
- Genista pulchella* Vis. subsp. *aquilana* F.Conti & Manzi
C Italian peninsula (ABR)
- Genista salzmannii* DC.
SAR (Corsica)
- Genista sardoa* Vals.
SAR
- Genista sulcitana* Vals.
SAR
- Genista toluensis* Vals.
SAR
- Genista tyrrhena* Vals. subsp. *pontiana* Brullo & De Marco
C Italian peninsula (LAZ)
- Genista tyrrhena* Vals. subsp. *tyrrhena*
SIC
- Genista valsecchiae* Brullo & De Marco
SAR
- Lathyrus apenninus* F.Conti
C Italian peninsula (MAR, UMB, LAZ, ABR)
- Lathyrus jordanii* (Ten.) Ces., Pass. & Gibelli
C Italian peninsula (MOL doubtful); S Italian peninsula (PUG, CAM, BAS, CAL)
- Lathyrus odoratus* L.
C Italian peninsula (LAZ not confirmed, ABR, MOL); S Italian peninsula (CAM, BAS, CAL); SIC
- Lotus cytisoides* L. subsp. *conradiae* Gamisans
SAR (Corsica)
- Onobrychis alba* (Waldst. & Kit.) Desv. subsp. *echinata* (Guss.) P.W.Ball
S Italian peninsula (PUG, BAS, CAL)

- Onobrychis calabrica* Sirj.
S Italian peninsula (CAL)
- Ononis cristata* Mill. subsp. *apennina* Tammaro & Catonica
C Italian peninsula (MAR, ABR)
- Ononis masquillierii* Bertol.
N Italian peninsula (EMR, TOS); C Italian peninsula (MAR)
- Ononis oligophylla* Ten.
C Italian peninsula (MAR, ABR, MOL); S Italian peninsula (PUG, CAM, BAS, CAL); SIC (Malta)
- Oxytropis pilosa* (L.) DC. subsp. *caputoi* (Moraldo & la Valva) Brillii-Catt., Di Massimo & Gubellini
C Italian peninsula (MAR, UMB, LAZ, ABR); S Italian peninsula (CAM, BAS)
- Retama raetam* (Forssk.) Webb & Berthel. subsp. *gussonei* (Webb) Greuter
S Italian peninsula (CAL); SIC
- Trifolium bivonae* Guss.
SIC
- Trifolium brutium* Ten.
C Italian peninsula (ABR doubtful); S Italian peninsula (CAM, BAS, CAL); SIC
- Trifolium isthmocarpum* Brot. subsp. *jaminianum* (Boiss.) Murb.
SIC
- Trifolium pratense* L. subsp. *semipurpureum* (Strobl) Pignatti
N Italian peninsula (LIG, TOS); C Italian peninsula (UMB, LAZ, ABR, MOL); S Italian peninsula (PUG, CAM, BAS, CAL); SIC
- Trifolium uniflorum* L. subsp. *savianum* (Guss.) Asch. & Graebn.
S Italian peninsula (CAL); SIC
- Vicia consentina* Spreng.
S Italian peninsula (CAL)
- Vicia giacomini* Segelb.
S Italian peninsula (PUG)
- Vicia ochroleuca* Ten. subsp. *ochroleuca*
N Italian peninsula (TOS); C Italian peninsula (LAZ doubtful, ABR doubtful); S Italian peninsula (CAM, BAS, CAL); SIC
- Vicia serinica* R.Uechtr. & Huter ex Huter
S Italian peninsula (BAS)
- Vicia tenuifolia* Roth subsp. *elegans* (Guss.) Nyman
C Italian peninsula (LAZ); S Italian peninsula (CAM not confirmed); SIC

Polygalaceae

- Polygala apiculata* Huter, Porta & Rigo
C Italian peninsula (MOL doubtful); S Italian peninsula (PUG not confirmed, CAL)
- Polygala carueliana* (Burnat ex A.W.Benn.) Caruel
N Italian peninsula (TOS)
- Polygala flavescens* DC.
N Italian peninsula (LIG not confirmed, EMR, TOS); C Italian peninsula (MAR, UMB, LAZ, ABR, MOL); S Italian peninsula (PUG, CAM, BAS)
- Polygala nicaeensis* W.D.J.Koch subsp. *corsica* (Boreau) P.Graebn.
N Italian peninsula (LIG); (Corsica)
- Polygala padulae* Arrigoni
SAR

Polygala pisaurensis Caldesi
N Italian peninsula (EMR); C Italian peninsula (MAR)
Polygala preslii Spreng.
S Italian peninsula (CAL); SIC
Polygala sardoa Chodat
SAR
Polygala sinisica Arrigoni
SAR

Rosales

Cannabaceae

Celtis tournefortii Lam. subsp. *aetnensis* (Tornab.) Raimondo & Schicchi
SIC
Celtis tournefortii Lam. subsp. *asperrima* (Lojac.) Raimondo & Schicchi
SIC

Rhamnaceae

Rhamnus glaucophylla Sommier
N Italian peninsula (TOS)
Rhamnus lojaconoi Raimondo
SIC
Rhamnus persicifolia Moris
SAR (Corsica)

Rosaceae

Alchemilla austroitalica Brullo, Scelsi & Spamp.
S Italian peninsula (CAL)
Alchemilla bonae S.E.Fröhner
NE Italy (LOM)
Alchemilla cavillieri (Briq.) Camus
NW Italy (PIE)
Alchemilla ceroniana Buser
N Italian peninsula (TOS)
Alchemilla cuneata Gaudin
NW Italy (VDA)
Alchemilla diversiloba Buser
NE Italy (TAA)
Alchemilla federiciana S.E.Fröhner
NE Italy (LOM)
Alchemilla lasenii S.E.Fröhner
NE Italy (VEN)
Alchemilla marsica Buser
C Italian peninsula (LAZ, ABR)
Alchemilla martinii S.E.Fröhner
NE Italy (LOM)

Alchemilla niphogeton Buser ex Pamp.
 NE Italy (TAA, VEN)
Alchemilla nydeggeriana S.E.Fröhner
 NW Italy (VDA)
Alchemilla vaccariana Buser
 NW Italy (VDA)
Cotoneaster nebrodensis (Guss.) K.Koch
 S Italian peninsula (CAL); SIC
Crataegus insegnae (Tineo ex Guss.) Bertol.
 SIC not confirmed; SAR
Drymocalis corsica (Soleirol ex Lehm.) Kurtto
 SAR (Corsica)
Malus crecimannoi Raimondo
 SIC
Potentilla caulescens L. subsp. *nebrodensis* (Strobl ex Zimmeter) Arrigoni
 C Italian peninsula (ABR); S Italian peninsula (CAM, BAS, CAL); SIC; SAR
Potentilla crassinervia Viv.
 SAR (Corsica)
Potentilla johanniniana Goiran
 NE Italy (LOM, TAA, VEN)
Potentilla rigoana Th. Wolf
 C Italian peninsula (MAR, UMB, LAZ, ABR, MOL); S Italian peninsula (CAM, BAS, CAL)
Prunus mahaleb L. subsp. *cupaniana* (Guss. ex É.Huet & A.Huet) Arcang.
 SIC
Pyrus castribonensis Raimondo, Schicchi & Mazzola
 SIC
Pyrus ciancioi P.Marino, Spadaro, G.Castellano & Raimondo
 SIC
Pyrus siccanorum Raimondo, Schicchi & P.Marino
 SIC
Pyrus vallis-demonis Raimondo & Schicchi
 SIC
Rosa viscosa Jan ex Guss.
 S Italian peninsula (CAL)
Rubus aetneus Tornab.
 SIC
Rubus arrigonii Camarda
 SAR
Rubus festii H.E.Weber
 NE Italy (TAA)
Rubus laconensis Camarda
 SAR
Rubus limbarae Camarda
 SAR
Rubus pignattii Camarda
 SAR
Sanguisorba dodecandra Moretti
 NE Italy (LOM)

Sorbus busambarensis G.Castellano, P.Marino, Raimondo & Spadaro

SIC

Sorbus madoniensis Raimondo, G.Castellano, Bazan & Schicchi

SIC

Spiraea decumbens W.D.J.Koch subsp. *tomentosa* (Poech) Dostál

NE Italy (VEN, FVG)

Ulmaceae

Zelkova sicula Di Pasq., Garfi & Quézel

SIC

Urticaceae

Mercurialis corsica Coss. & Kralik

SAR (Corsica)

Urtica rupestris Guss.

SIC

Fagales

Fagaceae

Quercus ichnusae Mossa, Bacch. & Brullo

SAR

Quercus leptobalanos Guss.

SIC

Quercus petraea (Matt.) Liebl. subsp. *austrotyrrhenica* Brullo, Guarino & Siracusa

S Italian peninsula (CAL); SIC

Cucurbitales

Cucurbitaceae

Bryonia marmorata E.Petit

SAR (Corsica)

Malpighiales

Elatinaceae

Elatine gussonei (Sommier) Brullo, Lanfr., Pavone & Ronsiv.

SIC (Malta)

Euphorbiaceae

Euphorbia barrelieri Savi subsp. *barrelieri*

N Italian peninsula (TOS); C Italian peninsula (LAZ)

- Euphorbia ceratocarpa* Ten.
S Italian peninsula (PUG, CAL); SIC
- Euphorbia corallioides* L.
C Italian peninsula (LAZ, ABR, MOL); S Italian peninsula (CAM, BAS, CAL); SIC
- Euphorbia gasparrinii* Boiss. subsp. *gasparrinii*
S Italian peninsula (CAL not confirmed); SIC
- Euphorbia gasparrinii* Boiss. subsp. *samnitica* (Fiori) Pignatti
C Italian peninsula (MAR, ABR, MOL)
- Euphorbia hyberna* L. subsp. *gibelliana* (Peola) Raffaelli
NW Italy (PIE)
- Euphorbia hyberna* L. subsp. *insularis* (Boiss.) Briq.
NW Italy (PIE), N Italian peninsula (LIG, TOS), SAR (Corsica)
- Euphorbia meuseli* Geltman
S Italian peninsula (BAS, CAL); SIC; SAR
- Euphorbia nicaeensis* All. subsp. *japygica* (Ten.) Arcang.
S Italian peninsula (PUG, CAM)
- Euphorbia papillaris* (Boiss.) Raffaelli & Ricci
SIC
- Euphorbia pithyusa* L. subsp. *cupanii* (Guss. ex Bertol.) Radcl.-Sm.
SIC; SAR (Corsica)
- Euphorbia semiperfoliata* Viv.
SAR (Corsica)
- Euphorbia variabilis* Ces.
NE Italy (LOM, TAA)

Hypericaceae

- Hypericum barbatum* Jacq. subsp. *calabricum* (Spreng.) Peruzzi & N.G.Passal.
S Italian peninsula (CAL)
- Hypericum corsicum* Steud.
SAR (Corsica)
- Hypericum hircinum* L. subsp. *hircinum*
N Italian peninsula (TOS); SAR (Corsica)
- Hypericum scruglii* Bacch., Brullo & Salmeri
SAR

Linaceae

- Linum katiiae* Peruzzi
S Italian peninsula (CAL)
- Linum mulleri* Moris
SAR
- Linum punctatum* C.Presl subsp. *punctatum*
SIC

Salicaceae

- Salix arrigonii* Brullo
SAR

Salix brutia Brullo & Spamp.
S Italian peninsula (CAL)

Salix crataegifolia Bertol.
N Italian peninsula (TOS)

Salix gussonei Brullo & Spamp.
SIC

Salix ionica Brullo, Scelsi & Spamp.
S Italian peninsula (CAL)

Salix oropotamica Brullo, Scelsi & Spamp.
S Italian peninsula (CAL)

Salix purpurea L. subsp. *eburnea* (Borzi) Cif. & Giacom. ex Pignatti
SAR

Salix tyrrhenica Brullo, Scelsi & Spamp.
S Italian peninsula (CAL)

Violaceae

Viola aethnensis (DC.) Strobl subsp. *aethnensis*
SIC

Viola aethnensis (DC.) Strobl subsp. *messanensis* (W.Becker) Merxm. & Lippert
S Italian peninsula (CAL); SIC

Viola aethnensis (DC.) Strobl subsp. *splendida* (W.Becker) Merxm. & Lippert
C Italian peninsula (MOL); S Italian peninsula (PUG, CAM, BAS, CAL)

Viola bertolonii Pio
NW Italy (PIE); N Italian peninsula (LIG, EMR)

Viola comollia Massara
NE Italy (LOM)

Viola corsica Nyman subsp. *ilvensis* (W.Becker) Merxm.
N Italian peninsula (TOS)

Viola culminis F.Fen. & Moraldo
NE Italy (LOM, TAA)

Viola dubyana Burnat ex Gremli
NE Italy (LOM, TAA)

Viola etrusca Erben
N Italian peninsula (TOS)

Viola eugeniae Parl. subsp. *eugeniae*
N Italian peninsula (EMR, TOS); C Italian peninsula (MAR, UMB, LAZ, ABR, MOL); S Italian peninsula (CAM)

Viola eugeniae Parl. subsp. *levieri* (Parl.) Arcang.
C Italian peninsula (LAZ doubtful, ABR)

Viola ferrarinii Moraldo & Ricceri
N Italian peninsula (LIG, EMR, TOS)

Viola limbarae (Merxm. & W.Lippert) Arrigoni
SAR

Viola magellensis Porta & Rigo ex Strobl
C Italian peninsula (MAR, ABR)

Viola merxmulleri Erben
S Italian peninsula (PUG)

Viola nebrodensis C.Presl

SIC

Viola pseudogracilis Strobl subsp. *cassinensis* (Strobl) Merxm. & A.F.W.Schmidt

C Italian peninsula (LAZ, MOL)

Viola pseudogracilis Strobl subsp. *pseudogracilis*

C Italian peninsula (LAZ, MOL); S Italian peninsula (CAM, BAS)

Viola tineorum Erben & Raimondo

SIC

Viola ucriana Erben & Raimondo

SIC

Geraniales

Geraniaceae

Erodium alpinum (Burm.f.) L'Hér.

C Italian peninsula (MAR, UMB, LAZ, ABR); S Italian peninsula (BAS doubtful)

Erodium corsicum Léman

SAR (Corsica)

Erodium nervulosum L'Hér.

S Italian peninsula (PUG, CAM not confirmed, BAS, CAL not confirmed); SAR

Erodium soluntinum Tod.

SIC

Geranium austroapenninum Aedo

C Italian peninsula (LAZ, ABR, MOL); S Italian peninsula (CAM, BAS, CAL)

Sapindales

Rutaceae

Ruta lamarmorae Bacchetta, Brullo & Giusso

SAR

Sapindaceae

Acer cappadocicum Gled. subsp. *lobelii* (Ten.) A.E.Murray

C Italian peninsula (LAZ, ABR, MOL); S Italian peninsula (CAM, BAS, CAL)

Malvales

Cistaceae

Helianthemum farinulentum Lacaita

S Italian peninsula (CAL)

Helianthemum morisianum Bertol.

SAR

Helianthemum oelandicum (L.) Dum.Cours. subsp. *allionii* (Tineo) Greuter & Burdet

SIC; SAR

Helianthemum oelandicum (L.) Dum.Cours. subsp. *nebrodense* (Guss.) Greuter & Burdet

SIC

Helianthemum sicanorum Brullo, Giusso & Sciandr.

SIC

Malvaceae

Malva agrigentina (Tineo) Soldano, Banfi & Galasso

S Italian peninsula (CAL doubtful); SIC

Malva lusitanica (L.) Valdés subsp. *pallescens* (Moris) Valdés

SAR

Thymelaeaceae

Daphne petraea Leyb.

NE Italy (LOM, TAA, VEN doubtful)

Daphne reichsteinii Landolt & E.J.P.Hauser

NE Italy (LOM, TAA)

Brassicales

Brassicaceae

Alyssum diffusum Ten. subsp. *calabricum* Španiel, Marhold, N.G.Passal. & Lihová

S Italian peninsula (BAS, CAL)

Alyssum diffusum Ten. subsp. *diffusum*

N Italian peninsula (TOS); C Italian peninsula (MAR, UMB, LAZ, ABR, MOL); S Italian peninsula (CAM)

Alyssum diffusum Ten. subsp. *garganicum* Španiel, Marhold, N.G.Passal. & Lihová

S Italian peninsula (PUG)

Arabis collina Ten. subsp. *rosea* (DC.) Minuto

C Italian peninsula (MAR, LAZ, ABR, MOL); S Italian peninsula (PUG, CAM, BAS, CAL); SIC; SAR

Arabis madonia C.Presl

SIC

Aubrieta columnae Guss. subsp. *columnae*

C Italian peninsula (LAZ, ABR, MOL); S Italian peninsula (PUG not confirmed, CAM, BAS, CAL)

Aubrieta columnae Guss. subsp. *italica* (Boiss.) Mattf.

S Italian peninsula (PUG, BAS doubtful)

Barbarea rupicola Moris

SAR

Biscutella apuana Raffaelli

N Italian peninsula (TOS)

Biscutella incana Ten.

C Italian peninsula (LAZ doubtful); S Italian peninsula (PUG not confirmed, CAL)

Biscutella laevigata L. subsp. *australis* Raffaelli & Baldoin

C Italian peninsula (LAZ, ABR)

Biscutella laevigata L. subsp. *hispidissima* (W.D.J.Koch) Raffaelli & Baldoin

NE Italy (FVG)

- Biscutella laevigata* L. subsp. *lucida* (Balb. ex DC.) Arcang.
NE Italy (LOM, TAA, VEN)
- Biscutella laevigata* L. subsp. *ossolana* Raffaelli & Baldoin
NW Italy (PIE)
- Biscutella laevigata* L. subsp. *prinzeriae* Raffaelli & Baldoin
N Italian peninsula (EMR)
- Biscutella maritima* Ten.
N Italian peninsula (TOS); C Italian peninsula (LAZ, MOL); S Italian peninsula (PUG, CAM, CAL); SIC
- Biscutella mollis* Loisel.
N Italian peninsula (TOS); C Italian peninsula (LAZ)
- Biscutella morisiana* Raffaelli
SAR (Corsica)
- Biscutella pichiana* Raffaelli subsp. *ilvensis* Raffaelli
N Italian peninsula (TOS)
- Biscutella pichiana* Raffaelli subsp. *pichiana*
N Italian peninsula (TOS)
- Biscutella prealpina* Raffaelli & Baldoin
NE Italy (TAA, VEN)
- Brassica baldensis* (Prosser & Bertolli) Prosser & Bertolli
NE Italy (VEN)
- Brassica glabrescens* Poldini
NE Italy (FVG)
- Brassica macrocarpa* Guss.
SIC
- Brassica raimondoi* Sciandr., C.Brullo, Brullo, Giusso, Miniss. & Salmeri
SIC
- Brassica rupestris* Raf. subsp. *hispida* Raimondo & Mazzola
SIC
- Brassica rupestris* Raf. subsp. *rupestris*
S Italian peninsula (CAL); SIC
- Brassica trichocarpa* C.Brullo, Brullo, Giusso & Ilardi
SIC
- Brassica tyrrhena* Giotta, Piccitto & Arrigoni
SAR
- Brassica villosa* Biv. subsp. *bivoniana* (Mazzola & Raimondo) Raimondo & Mazzola
SIC
- Brassica villosa* Biv. subsp. *brevisiliqua* (Raimondo & Mazzola) Raimondo & Geraci
SIC
- Brassica villosa* Biv. subsp. *drepanensis* (Caruel) Raimondo & Mazzola
SIC
- Brassica villosa* Biv. subsp. *tineoi* (Lojac.) Raimondo & Mazzola
SIC
- Brassica villosa* Biv. subsp. *villosa*
SIC
- Cardamine apennina* Lihová & Marhold
N Italian peninsula (TOS); C Italian peninsula (MAR, UMB, LAZ, ABR)
- Cardamine battagliae* Cesca & Peruzzi
S Italian peninsula (CAL)

- Cardamine dubia* Nicotra
S Italian peninsula (CAL); SIC
- Cardamine granulosa* All.
NW Italy (PIE)
- Cardamine monteluccii* Brilli-Catt. & Gubellini
N Italian peninsula (TOS); C Italian peninsula (MAR, UMB, LAZ, ABR); S Italian peninsula (CAM, BAS, CAL); SIC
- Cardamine silana* Marhold & Perný
S Italian peninsula (BAS, CAL)
- Diplotaxis scaposa* DC.
SIC
- Draba olympicoides* Strobl
SIC
- Erucastrum nasturtiifolium* (Poir.) O.E.Schulz subsp. *benacense* F.Martini & F.Fen.
NE Italy (LOM)
- Erucastrum palustre* (Pirona) Vis.
NE Italy (FVG)
- Erucastrum virgatum* C.Presl subsp. *virgatum*
S Italian peninsula (BAS, CAL); SIC
- Erysimum aurantiacum* (Leyb.) Leyb.
NE Italy (TAA)
- Erysimum bonannianum* C.Presl
SIC
- Erysimum brulloi* G.Ferro
SIC
- Erysimum crassistylum* C.Presl subsp. *crassistylum*
S Italian peninsula (CAL)
- Erysimum crassistylum* C.Presl subsp. *garganicum* Peccenini & Polatschek
S Italian peninsula (PUG, BAS)
- Erysimum crassistylum* C.Presl subsp. *verresianum* Peccenini & Polatschek
NW Italy (VDA)
- Erysimum etnense* Jord.
SIC
- Erysimum insubricum* Peccenini & Polatschek
NW Italy (PIE); NE Italy (LOM)
- Erysimum ligusticum* Peccenini & Polatschek
NW Italy (PIE), N Italian peninsula (LIG, TOS)
- Erysimum majellense* Polatschek
C Italian peninsula (LAZ, ABR, MOL)
- Erysimum maremmanum* Peccenini & Polatschek
N Italian peninsula (TOS)
- Erysimum montis-argentarii* Peccenini & Polatschek
N Italian peninsula (TOS)
- Erysimum metlesicsii* Polatschek
SIC
- Erysimum pseudorhaeticum* Polatschek
N Italian peninsula (EMR, TOS); C Italian peninsula (MAR, UMB, LAZ, ABR, MOL); S Italian peninsula (CAM)

- Hesperis laciniata* All. subsp. *cupaniana* (Guss.) Giardina & Raimondo
SIC
- Hornungia revelierei* (Jord.) Soldano, F.Conti, Banfi & Galasso
N Italian peninsula (TOS); SIC (Malta); SAR (Corsica)
- Iberis integerrima* Moris
SAR
- Matthiola incana* (L.) R.Br. subsp. *pulchella* (Conti) Greuter & Burdet
SIC
- Matthiola incana* (L.) R.Br. subsp. *rupestris* (Raf.) Nyman
C Italian peninsula (ABR doubtful); S Italian peninsula (CAL); SIC
- Morisia monanthos* (Viv.) Asch.
SAR (Corsica). The monotypic genus *Morisia* is endemic to Sardinia and Corse.
- Murbeckiella zanonii* (Ball) Rothm.
N Italian peninsula (EMR, TOS)
- Noccaea brevistyla* (DC.) Steud.
SAR (Corsica)
- Noccaea rotundifolia* (L.) Moench subsp. *grignensis* F.K.Mey.
NE Italy (LOM)
- Noccaea stylosa* (Ten.) Rchb.
C Italian peninsula (MAR, UMB, LAZ, ABR, MOL)
- Odontarrhena argentea* (All.) Ledeb.
NW Italy (VDA, PIE)
- Odontarrhena bertolonii* (Desv.) L.Cecchi & Selvi subsp. *bertolonii*
NE Italy (LOM); N Italian peninsula (LIG, EMR, TOS)
- Odontarrhena nebrodensis* (Tineo) subsp. *nebrodensis*
SIC
- Odontarrhena tavolarae* (Briq.) L.Cecchi & Selvi
SAR
- Phyllolepidum rupestre* (Heynh.) Trinajstić
C Italian peninsula (ABR)
- Rhizobotrya alpina* Tausch
NE Italy (TAA, VEN). The monotypic genus *Rhizobotrya* is endemic to NE Italy.
- Sisymbrella dentata* (L.) O.E.Schulz
S Italian peninsula (CAL doubtful); SIC

Santalales

Thesiaceae

- Thesium italicum* A.DC.
SAR
- Thesium sommieri* Hendrych
N Italian peninsula (EMR, TOS)

Caryophyllales

Amaranthaceae

Caroxylon agrigentinum (Guss.) C.Brullo, Brullo, Giusso, Guarino & Iamónico
SIC

Eokochia saxicola (Guss.) Freitag & G.Kadereit

S Italian peninsula (CAM); SIC. The monotypic genus *Eokochia* is endemic to Italy (see also Iamónico & Kadereit 2012).

Suaeda kocheri Guss. ex C.Brullo, Brullo & Giusso
SIC

Caryophyllaceae

Arenaria bertolonii Fiori & Paol.

N Italian peninsula (LIG, EMR, TOS); C Italian peninsula (MAR, UMB, LAZ, ABR, MOL); S Italian peninsula (CAM, BAS, CAL); SIC doubtful; SAR (Corsica)

Arenaria huteri A.Kern.

NE Italy (TAA, VEN, FVG)

Cerastium apuanum Parl.

N Italian peninsula (TOS)

Cerastium granulatum (Huter, Porta & Rigo) Chiov.

S Italian peninsula (CAM, BAS, CAL)

Cerastium lacaitae Barberis, Bechi & Miceli

S Italian peninsula (PUG, CAM, CAL); SIC

Cerastium palustre Moris

SAR

Cerastium pospichalii Soldano & F.Conti

NE Italy (FVG)

Cerastium scaranoi Ten.

C Italian peninsula (MAR, UMB doubtful, LAZ, ABR, MOL); S Italian peninsula (CAM, BAS, CAL)

Cerastium supramontanum Arrigoni

SAR

Cerastium thomasii Ten.

C Italian peninsula (MAR, LAZ, ABR)

Cerastium tomentosum L.

C Italian peninsula (MAR, UMB, LAZ, ABR, MOL); S Italian peninsula (PUG not confirmed, CAM, BAS, CAL); SIC

Cerastium utriense Barberis

NW Italy (PIE); N Italian peninsula (LIG)

Dianthus brachycalyx A.Huet & É.Huet ex Bacch., Brullo, Casti & Giusso

C Italian peninsula (LAZ, ABR, MOL); S Italian peninsula (CAM, BAS, CAL)

Dianthus brutius Brullo, Scelsi & Spamp. subsp. *brutius*

S Italian peninsula (CAL)

Dianthus brutius Brullo, Scelsi & Spamp. subsp. *pentadactyli* Brullo, Scelsi & Spamp.

S Italian peninsula (CAL)

Dianthus busambræ Soldano & F.Conti

SIC

- Dianthus carthusianorum* L. subsp. *tenorei* (Lacaita) Pignatti
C Italian peninsula (MAR, UMB, LAZ, ABR, MOL); S Italian peninsula (CAM, BAS, CAL)
- Dianthus cyatophorus* Moris subsp. *cyatophorus*
SAR
- Dianthus cyatophorus* Moris subsp. *minae* (Mazzola, Raimondo & Ilardi) Raimondo
SIC
- Dianthus furcatus* Balb. subsp. *dissimilis* (Burnat) Pignatti
NW Italy (PIE doubtful)
- Dianthus furcatus* Balb. subsp. *lereschii* (Burnat) Pignatti
NW Italy (VDA, PIE); N Italian peninsula (LIG)
- Dianthus gasparrinii* Guss.
SIC
- Dianthus genargenteus* Bacch., Brullo, Casti & Giusso
SAR
- Dianthus graminifolius* C.Presl
SIC
- Dianthus guliae* Janka
N Italian peninsula (TOS extinct); C Italian peninsula (ABR doubtful); S Italian peninsula (CAM, CAL)
- Dianthus ichnusae* Bacch., Brullo, Casti & Giusso subsp. *ichnusae*
SAR
- Dianthus ichnusae* Bacch., Brullo, Casti & Giusso subsp. *toddei* Bacch., Brullo, Casti & Giusso
SAR
- Dianthus insularis* Bacch., Brullo, Casti & Giusso
SAR
- Dianthus japigicus* Bianco & Brullo
S Italian peninsula (PUG)
- Dianthus morisianus* Vals.
SAR
- Dianthus oliastreae* Bacch., Brullo, Casti & Giusso
SAR
- Dianthus rupicola* Biv. subsp. *aeolicus* (Lojac.) Brullo & Minissale
SIC
- Dianthus rupicola* Biv. subsp. *lopadusanus* Brullo & Miniss.
SIC
- Dianthus sardous* Bacch., Brullo, Casti & Giusso
SAR
- Dianthus sicus* C.Presl. subsp. *mossanus* (Bacch. & Brullo) Arrigoni
SAR
- Dianthus sicus* C.Presl subsp. *stellaris* (Camarda) Arrigoni
SAR
- Dianthus tarentinus* Lacaita
S Italian peninsula (PUG)
- Dianthus virgatus* Pasq.
S Italian peninsula (CAL)
- Dianthus vulturius* Guss. & Ten. subsp. *aspromontanus* Brullo, Scelsi & Spamp.
S Italian peninsula (CAL)
- Dianthus vulturius* Guss. & Ten. subsp. *vulturius*
C Italian peninsula (ABR, MOL); S Italian peninsula (PUG, CAM, BAS, CAL)

- Gypsophila arrostii* Guss. subsp. *arrostii*
S Italian peninsula (PUG, BAS, CAL); SIC
- Gypsophila papillosa* Porta
NE Italy (VEN)
- Herniaria bornmuelleri* Chaudhri
C Italian peninsula (ABR)
- Herniaria fontanesii* Gay subsp. *empedocleana* (Lojac.) Brullo
SIC extinct
- Herniaria hirsuta* L. subsp. *aprutia* Chaudhri
C Italian peninsula (ABR)
- Herniaria litardierei* (Gamisans) Greuter & Burdet
SAR (Corsica)
- Minuartia glomerata* (M.Bieb.) Degen subsp. *trichocalycina* (Ten. & Guss.) F.Conti
C Italian peninsula (ABR)
- Minuartia graminifolia* (Ard.) Jáv. subsp. *graminifolia*
NE Italy (VEN, FVG)
- Minuartia graminifolia* (Ard.) Jáv. subsp. *rosanoi* (Ten.) Mattf.
C Italian peninsula (LAZ, ABR, MOL); S Italian peninsula (CAM, BAS not confirmed); SIC
- Minuartia grignensis* (Rechb.) Mattf.
NE Italy (LOM)
- Minuartia laricifolia* (L.) Schinz & Thell. subsp. *ophiolitica* Pignatti
NW Italy (PIE); NE Italy (LOM); N Italian peninsula (LIG, EMR, TOS); C Italian peninsula (UMB doubtful)
- Minuartia moraldoi* F.Conti
S Italian peninsula (CAM)
- Moehringia concarenae* F.Fen. & F.Martini
NE Italy (LOM)
- Moehringia dielsiana* Mattf.
NE Italy (LOM)
- Moehringia glaucovirens* Bertol.
NE Italy (LOM, TAA, VEN)
- Moehringia insubrica* Degen
NE Italy (LOM)
- Moehringia markgrafii* Merxm. & Gutermann
NE Italy (LOM)
- Moehringia papulosa* Bertol.
C Italian peninsula (MAR)
- Sagina pilifera* (DC.) Fenzl
SAR (Corsica)
- Sagina revelierei* Jord. & Fourr.
N Italian peninsula (TOS); SAR (Corsica)
- Saponaria ocymoides* L. subsp. *alsinoides* (Viv.) Arcang.
SAR (Corsica)
- Scleranthus aetnensis* Strobl
SIC
- Scleranthus perennis* L. subsp. *stroblii* (Strobl) Giardina & Raimondo
SIC
- Scleranthus perennis* L. subsp. *vulcanicus* (Strobl) Bég.
SIC

- Silene beguinotii* Vals.
SAR
- Silene calabra* Brullo, Scelsi & Spamp.
S Italian peninsula (CAL)
- Silene cattariniana* Ferrarini & Cecchi
C Italian peninsula (MAR, UMB doubtful, LAZ, ABR)
- Silene echinata* Otth
C Italian peninsula (LAZ doubtful); S Italian peninsula (CAM, BAS, CAL)
- Silene elisabethae* Jan
NE Italy (LOM, TAA)
- Silene giraldii* Guss.
S Italian peninsula (CAM); SAR
- Silene hicesiae* Brullo & Signorello
SIC
- Silene ichnusae* Brullo, De Marco & De Marco f.
SAR
- Silene kemoniana* C.Brullo, Brullo, Giusso, Ilardi & Sciandr.
SIC
- Silene lanuginosa* Bertol.
N Italian peninsula (TOS)
- Silene martinoli* Bocchieri & Mulas
SAR
- Silene minae* Strobl
SIC
- Silene morisiana* Bég. & Ravano
SAR
- Silene nocturna* L. subsp. *capraria* (Sommier) Peruzzi & Carta
N Italian peninsula (TOS). Note: ongoing studies (G. Bacchetta and collaborators in prep.) highlight that this subspecies may not deserve taxonomic distinction from subsp. *boullui* (Jord. ex Rouy & Foucaud) Gamisans.
- Silene nodulosa* Viv.
SAR (Corsica)
- Silene notarisii* Ces.
C Italian peninsula (MAR, UMB, LAZ, ABR)
- Silene nummica* Vals.
SIC; SAR
- Silene oenotriae* Brullo
S Italian peninsula (BAS, CAL)
- Silene pichiana* Ferrarini & Cecchi
N Italian peninsula (TOS)
- Silene requienii* Otth
SAR doubtful (Corsica)
- Silene roemerii* Friv. subsp. *staminea* (Bertol.) Nyman
C Italian peninsula (MAR, UMB, LAZ, ABR); S Italian peninsula (BAS)
- Silene rosulata* Soy.-Will. & Godr. subsp. *sanctae-theresiae* (Jeanm.) Jeanm.
SAR
- Silene succulenta* Forssk. subsp. *corsica* (DC.) Nyman
SAR (Corsica)
- Silene turbinata* Guss.

SIC doubtful
Silene valsecchiae Bocchieri
 SAR
Silene velutina Pourr. ex Loisel.
 SAR (Corsica)
Silene vulgaris (Moench) Garcke subsp. *aetnensis* (Strobl) Pignatti
 SIC extinct
Spergula madoniaca (Lojac.) Iamónico
 SIC
Spergularia macrorhiza (Req. ex Loisel.) Heynh.
 S Italian peninsula (PUG); SAR (Corsica)
Stellaria media (L.) Vill. subsp. *romana* Bég.
 C Italian peninsula (LAZ not confirmed, PUG)

Plumbaginaceae

Armeria aspromontana Brullo, Scelsi & Spamp.
 S Italian peninsula (CAL)
Armeria brutia Brullo, Gangale & Uzunov
 S Italian peninsula (CAL)
Armeria denticulata (Bertol.) DC.
 N Italian peninsula (LIG, TOS)
Armeria gussonei Boiss.
 SIC
Armeria helodes F. Martini & Poldini
 NE Italy (FVG)
Armeria macropoda Boiss.
 S Italian peninsula (CAM, BAS)
Armeria marginata (Levier) Bianchini
 N Italian peninsula (EMR, TOS)
Armeria morisii Boiss.
 SAR
Armeria nebrodensis (Guss.) Boiss.
 SIC
Armeria sardoa Spreng. subsp. *genargentea* Arrigoni
 SAR
Armeria sardoa Spreng. subsp. *sardoa*
 SAR
Armeria saviana Selvi
 N Italian peninsula (TOS)
Armeria seticeps Rchb.
 NW Italy (PIE doubtful); NE Italy (LOM); N Italian peninsula (LIG, EMR, TOS)
Armeria sulcitana Arrigoni
 SAR
Goniolimon italicum Tammaro, Pignatti & Frizzi
 C Italian peninsula (ABR)
Limonium acutifolium (Rchb.) Salmon subsp. *acutifolium*
 SAR
Limonium acutifolium (Rchb.) Salmon subsp. *bosanum* (Arrigoni & Diana) Arrigoni

- SAR
- Limonium acutifolium* (Rchb.) Salmon subsp. *cornusianum* (Arrigoni & Diana) Arrigoni SAR
- Limonium acutifolium* (Rchb.) Salmon subsp. *nymphaeum* (Erben) Arrigoni
- SAR
- Limonium acutifolium* (Rchb.) Salmon subsp. *tenuifolium* (Bertol. ex Moris) Arrigoni
- SAR
- Limonium acutifolium* (Rchb.) Salmon subsp. *tharrosianum* (Arrigoni & Diana) Arrigoni SAR
- Limonium aegusae* Brullo
- SIC
- Limonium albidum* (Guss.) Pignatti
- SIC
- Limonium algusae* (Brullo) Greuter
- SIC
- Limonium ampuriense* Arrigoni & Diana
- SAR
- Limonium amynclaeum* Pignatti
- C Italian peninsula (LAZ)
- Limonium apulum* Brullo
- S Italian peninsula (PUG)
- Limonium articulatum* (Loisel.) Kuntze
- SAR
- Limonium bocconeii* (Lojac.) Litard.
- SIC
- Limonium brutium* Brullo
- S Italian peninsula (CAL)
- Limonium calabrum* Brullo
- S Italian peninsula (CAL)
- Limonium calcarae* (Tod.) Pignatti
- SIC
- Limonium capitis-eliae* Erben
- SAR
- Limonium capitis-marci* Arrigoni & Diana
- SAR
- Limonium caprariae* Rizzotto
- N Italian peninsula (TOS)
- Limonium carisae* Erben
- SAR
- Limonium catanense* (Tineo ex Lojac.) Brullo
- SIC extinct
- Limonium catanzaroi* Brullo
- SIC
- Limonium circaeii* Pignatti
- C Italian peninsula (LAZ)
- Limonium coralliforme* Alf.Mayer
- SAR
- Limonium cosyrense* (Guss.) Kuntze
- SIC
- Limonium cumanum* (Ten.) Kuntze
- S Italian peninsula (CAM)

Limonium cunicularium Arrigoni & Diana
SAR

Limonium diomedeam Brullo
S Italian peninsula (PUG)

Limonium dolcheri Pignatti
SAR

Limonium doriae (Sommier) Pignatti
N Italian peninsula (TOS)

Limonium dubium (Guss.) Litard.
SIC; SAR (Corsica)

Limonium etruscum Arrigoni & Rizzotto
N Italian peninsula (TOS)

Limonium flagellare (Lojac.) Brullo
SIC

Limonium furnarii Brullo
SIC

Limonium gallurense Arrigoni & Diana
SAR

Limonium glomeratum (Tausch) Erben
SIC; SAR

Limonium gorgonae Pignatti
N Italian peninsula (TOS)

Limonium gussonei (Lojac.) Giardina & Raimondo
SIC

Limonium hermaeum (Pignatti) Pignatti
SAR

Limonium hyblaeum Brullo
SIC

Limonium ilvae Pignatti
N Italian peninsula (TOS)

Limonium inarimense (Guss.) Pignatti
S Italian peninsula (CAM)

Limonium insulare (Bég. & Landi) Arrigoni & Diana
SAR

Limonium intermedium (Guss.) Brullo
SIC extinct

Limonium ionicum Brullo
SIC

Limonium jankae (Lojac.) Giardina & Raimondo
SIC

Limonium japygicum (H.Groves) Pignatti
S Italian peninsula (PUG)

Limonium lacinium Arrigoni
S Italian peninsula (CAL)

Limonium laetum (Nyman) Pignatti
SAR

Limonium lausianum Pignatti
SAR

Limonium lilybaeum Brullo
 SIC

Limonium lojaconoi Brullo
 SIC

Limonium lopadusanum Brullo
 SIC

Limonium malfatanicum Erben
 SAR

Limonium mazarae Pignatti
 SIC

Limonium melancholicum Brullo, Marcenò & S.Romano
 SIC

Limonium merxmuelleri Erben subsp. *merxmuelleri*
 SAR

Limonium merxmuelleri Erben subsp. *oristanum* (Alf.Mayer) Arrigoni
 SAR

Limonium merxmuelleri Erben subsp. *sulcitanum* (Arrigoni) Arrigoni
 SAR

Limonium merxmuelleri Erben subsp. *tigulianum* (Arrigoni & Diana) Arrigoni
 SAR

Limonium minutiflorum (Guss.) Kuntze
 SIC

Limonium morisianum Arrigoni
 SAR

Limonium multifforme Pignatti
 N Italian peninsula (TOS)

Limonium multifurcatum Erben
 SAR

Limonium optimae Raimondo
 SIC

Limonium opulentum (Lojac.) Brullo
 SIC

Limonium pachynense Brullo
 SIC

Limonium pandatariae Pignatti
 C Italian peninsula (LAZ)

Limonium panormitanum (Tod.) Pignatti
 SIC

Limonium parvifolium (Tineo) Pignatti
 SIC

Limonium pavonianum Brullo
 SIC

Limonium peucetium Pignatti
 S Italian peninsula (PUG not confirmed)

Limonium planesiae Pignatti
 N Italian peninsula (TOS)

Limonium pontium Pignatti
 C Italian peninsula (LAZ)

Limonium ponzoi (Fiori & Bég.) Brullo
SIC

Limonium portovecchiense Erben
SAR doubtful (Corsica)

Limonium protohermaeum Arrigoni & Diana
SAR

Limonium pseudolaetum Arrigoni & Diana
SAR

Limonium pulviniforme Arrigoni & Diana
SAR

Limonium racemosum (Lojac.) Diana
SAR

Limonium remotispiculum (Lacaita) Pignatti
S Italian peninsula (CAM, BAS, CAL)

Limonium retirameum Greuter & Burdet subsp. *caralitanum* (Erben) Arrigoni
SAR

Limonium retirameum Greuter & Burdet subsp. *retirameum*
SAR

Limonium secundirameum (Lojac.) Brullo
SIC

Limonium selinuntinum Brullo
SIC

Limonium sommierianum (Fiori) Arrigoni
N Italian peninsula (TOS)

Limonium strictissimum (Salzm.) Arrigoni
SAR

Limonium syracusanum Brullo
SIC

Limonium tauromenitanum Brullo
SIC

Limonium tenoreanum (Guss.) Pignatti
S Italian peninsula (CAM)

Limonium tenuiculum (Tineo ex Guss.) Pignatti
SIC

Limonium tibulatium Pignatti
SAR

Limonium todaroanum Raimondo & Pignatti
SIC

Limonium tyrrhenicum Arrigoni & Diana
SAR

Limonium ursanum Erben
SAR

Limonium usticanum Giardina & Raimondo
SIC

Limonium viniolae Arrigoni & Diana
SAR

Polygonaceae

Polygonum scoparium Loisel.

SAR (Corsica)

Polygonum tenorei C.Presl

S Italian peninsula (BAS, CAL); SIC doubtful

Rumex aetnensis C.Presl

SIC

Rumex pulcher L. subsp. *suffocatus* (Moris ex Bertol.) Nyman

SAR

Rumex scutatus L. subsp. *glaucescens* (Guss.) Brullo, Scelsi & Spamp.

SIC; SAR

Portulacaceae

Portulaca sardoa Danin, Bagella & Marrosu

SAR

Portulaca sicula Danin, Domina & Raimondo

SIC

Ericales

Ericaceae

Erica multiflora L. subsp. *hyblaea* Domina & Raimondo

SIC

Erica sicula Guss. subsp. *sicula*

SIC

Primulaceae

Androsace mathildae Levier

C Italian peninsula (ABR)

Androsace vitaliana (L.) Lapeyr. subsp. *praetutiana* (Buser ex Sünd.) Kress

C Italian peninsula (MAR, LAZ doubtful, ABR)

Primula albenensis Banfi & Ferl.

NE Italy (LOM)

Primula apennina Widmer

N Italian peninsula (EMR, TOS)

Primula glaucescens Moretti

NE Italy (LOM, TAA)

Primula infecta (Kress) Landolt

NW Italy (VDA, PIE)

Primula palinuri Petagna

S Italian peninsula (CAM, BAS, CAL)

Primula polliniana Moretti

NE Italy (LOM, TAA, VEN)

Primula recubariensis Prosser & Scorteg.

NE Italy (TAA, VEN)

Primula tyrolensis Schott ex Rchb.f.
NE Italy (TAA, VEN, FVG)
Soldanella calabrella Kress
S Italian peninsula (CAM, CAL)
Soldanella minima Hoppe subsp. *samnitica* Cristof. & Pignatti
C Italian peninsula (ABR)

Gentianales

Apocynaceae

Vinca difformis Pourr. subsp. *sardoa* Stearn
SAR

Gentianaceae

Gentiana brentae Prosser & Bertolli
NE Italy (TAA)
Gentiana froelichii Jan subsp. *zenariae* F.Martini & Poldini
NE Italy (VEN, FVG)
Gentianella columnae (Ten.) Holub
C Italian peninsula (MAR, UMB, LAZ, ABR, MOL); S Italian peninsula (CAM, BAS, CAL)

Rubiaceae

Asperula apuana (Fiori) Arrigoni
N Italian peninsula (TOS)
Asperula calabra (Fiori) Gavioli
S Italian peninsula (CAL)
Asperula crassifolia L.
S Italian peninsula (CAM)
Asperula cynanchica L. subsp. *neglecta* (Guss.) Arcang.
C Italian peninsula (MAR, UMB doubtful, LAZ, ABR, MOL)
Asperula deficiens Viv.
SAR
Asperula garganica Huter, Porta & Rigo ex Ehrend. & Krendl
S Italian peninsula (PUG)
Asperula gussonei Boiss.
SIC
Asperula lactea (Huter, Porta & Rigo) Brullo, Gargano, N.G.Passal. & Peruzzi
S Italian peninsula (CAL)
Asperula peloritana C.Brullo, Brullo, Giusso & Scuderi
SIC
Asperula pumila Moris
SAR
Asperula rupestris Tineo
SIC
Asperula staliana Vis. subsp. *diomedea* Korica, Lausi & Ehrend.
S Italian peninsula (PUG)

- Galium aetnicum* Biv.
SIC
- Galium baldense* Spreng.
NE Italy (LOM, TAA, VEN, FVG)
- Galium caprarium* Natali
N Italian peninsula (TOS); (Corsica)
- Galium corsicum* Spreng.
SAR (Corsica)
- Galium glaucophyllum* Em.Schmid
SAR
- Galium litorale* Guss.
SIC
- Galium lucidum* All. subsp. *venustum* (Jord.) Arcang.
C Italian peninsula (ABR); S Italian peninsula (CAM, BAS, CAL); SIC (Corsica)
- Galium magellense* Ten.
C Italian peninsula (MAR, UMB, LAZ, ABR, MOL); S Italian peninsula (CAM, CAL)
- Galium margaritaceum* A.Kern.
NE Italy (TAA, VEN, FVG)
- Galium montis-arerae* Merxm. & Ehrend.
NE Italy (LOM)
- Galium palaeoitalicum* Ehrend.
N Italian peninsula (TOS); S Italian peninsula (CAM, BAS, CAL)
- Galium pallidum* C.Presl
C Italian peninsula (LAZ, ABR); S Italian peninsula (BAS, CAL doubtful); SIC
- Galium schmidii* Arrigoni
SAR
- Galium verrucosum* Huds. subsp. *halophilum* (Ponzo) Lambinon
N Italian peninsula (TOS); SIC; SAR (Corsica)
- Valantia calva* Brullo
SIC
- Valantia deltoidea* Brullo
S Italian peninsula (PUG); SIC

Boraginales

Boraginaceae

- Anchusa capellii* Moris
SAR
- Anchusa crispa* Viv. subsp. *crispa*
SAR (Corsica)
- Anchusa crispa* Viv. subsp. *maritima* (Vals.) Selvi & Bigazzi
SAR
- Anchusa formosa* Selvi, Bigazzi & Bacch.
SAR
- Anchusa litorea* Moris
SAR
- Anchusa montelinasana* Angius, Pontec. & Selvi
SAR

- Anchusa sardoa* (Illario) Selvi & Bigazzi
SAR
- Borago morisiana* Bigazzi & Ricceri
SAR
- Borago pygmaea* (DC.) Chater & Greuter
N Italian peninsula (TOS); SAR (Corsica)
- Buglossoides arvensis* (L.) I.M.Johnst. subsp. *splitgerberi* (Guss.) Giardina & Raimondo
SIC
- Buglossoides calabra* (Ten.) I.M.Johnst.
S Italian peninsula (CAM, BAS not confirmed, CAL)
- Buglossoides minima* (Moris) R.Fern.
S Italian peninsula (BAS, CAL not confirmed); SIC; SAR
- Cynoglossum apenninum* L.
N Italian peninsula (TOS not confirmed); C Italian peninsula (MAR, UMB, LAZ, ABR, MOL); S Italian peninsula (PUG not confirmed, CAM, BAS, CAL); SIC
- Cynoglossum barbaricinum* Arrigoni & Selvi
SAR
- Cynoglossum magellense* Ten.
C Italian peninsula (MAR, UMB, LAZ, ABR); S Italian peninsula (CAM, BAS, CAL)
- Cynoglossum nebrodense* Guss. subsp. *lucanum* Selvi & Sutorý
S Italian peninsula (BAS, CAL)
- Echium anchusoides* Bacch., Brullo & Selvi
SAR
- Echium italicum* L. subsp. *siculum* (Lacaita) Greuter & Burdet
SIC
- Heliotropium suaveolens* M.Bieb. subsp. *bocconeii* (Guss.) Brummitt
S Italian peninsula (CAM not confirmed, CAL doubtful); SIC
- Moltkia suffruticosa* (L.) Brand subsp. *bigazziana* Peruzzi & Soldano
N Italian peninsula (TOS)
- Moltkia suffruticosa* (L.) Brand subsp. *suffruticosa*
NE Italy (VEN)
- Myosotis decumbens* Host subsp. *florentina* Grau
N Italian peninsula (TOS); C Italian peninsula (MAR, UMB, LAZ, ABR, MOL); S Italian peninsula (BAS)
- Myosotis graui* Selvi
C Italian peninsula (MAR, UMB doubtful, LAZ, ABR, MOL); S Italian peninsula (CAM, BAS, CAL)
- Myosotis soleirolii* Gren. & Godr.
SAR (Corsica)
- Myosotis sylvatica* Hoffm. subsp. *elongata* (Strobl) Grau
S Italian peninsula (PUG, CAM, BAS, CAL); SIC
- Myosotis tineoi* C.Brullo & Brullo
SIC
- Onosma echioides* (L.) L. subsp. *angustifolia* (Lehm.) Peruzzi & N.G.Passal.
S Italian peninsula (PUG, BAS, CAL)
- Onosma echioides* (L.) L. subsp. *canescens* (C.Presl) Peruzzi & N.G.Passal.
SIC
- Onosma echioides* (L.) L. subsp. *echioides*
N Italian peninsula (TOS); C Italian peninsula (MAR, UMB, LAZ, ABR, MOL); S Italian peninsula (CAM, BAS, CAL)

- Onosma helvetica* Boiss. em. Teppner subsp. *lucana* (Lacaita) Peruzzi, Aquaro & Cesca
S Italian peninsula (BAS, CAL)
- Onosma helvetica* Boiss. em. Teppner subsp. *tridentina* (Wettst.) Teppner
NE Italy (LOM doubtful, TAA, VEN)
- Pulmonaria hirta* L. subsp. *apennina* (Cristof. & Puppi) Peruzzi
NW Italy (PIE doubtful); N Italian peninsula (LIG, EMR, TOS); C Italian peninsula (MAR, UMB, LAZ, ABR, MOL); S Italian peninsula (PUG, CAM, BAS, CAL)
- Pulmonaria vallarsae* A.Kern.
NE Italy (LOM, TAA, VEN, FVG doubtful)
- Symphytum gussonei* F.W.Schultz
SIC

Solanales

Convolvulaceae

- Cuscuta epithymum* (L.) L. subsp. *corsicana* (Yunck.) Lambinon
SAR (Corsica)

Lamiales

Lamiaceae

- Ajuga tenorei* C.Presl
C Italian peninsula (MAR doubtful, UMB doubtful, LAZ, ABR, MOL); S Italian peninsula (PUG doubtful, CAM, BAS doubtful, CAL); SIC
- Betonica alopecuroides* L. subsp. *divulsa* (Ten.) Bartolucci & Peruzzi
C Italian peninsula (MAR, UMB, LAZ, ABR, MOL)
- Clinopodium alpinum* (L.) Kuntze subsp. *nebrodense* (A.Kern. & Strobl) Bartolucci & F.Conti
SIC
- Clinopodium minae* (Lojac.) Peruzzi & F.Conti
SIC
- Clinopodium sandalioticum* (Bacch. & Brullo) Bacch. & Brullo
SAR
- Clinopodium sardoum* (Asch. & Levier) Peruzzi & F.Conti
SAR
- Glechoma sardoia* (Bég.) Bég.
SAR (Corsica)
- Lamium garganicum* L. subsp. *corsicum* (Godr. & Gren.) Arcang.
SAR (Corsica)
- Mentha requienii* Benth. subsp. *bistaminata* Mannocci & Falconcini
N Italian peninsula (TOS)
- Mentha requienii* Benth. subsp. *requienii*
SAR (Corsica)
- Micromeria cordata* (Moris ex Bertol.) Moris
SAR
- Micromeria graeca* (L.) Benth. ex Rchb. subsp. *consentina* (Ten.) Guinea
C Italian peninsula (ABR doubtful); S Italian peninsula (CAM not confirmed, BAS doubtful, CAL); SIC

- Micromeria graeca* (L.) Benth. ex Rchb. subsp. *garganica* (Briq.) Guinea
C Italian peninsula (MOL); S Italian peninsula (PUG, BAS doubtful, CAL); SIC
- Micromeria graeca* (L.) Benth. ex Rchb. subsp. *longiflora* (C.Presl) Nyman
S Italian peninsula (CAL); SIC
- Micromeria graeca* (L.) Benth. ex Rchb. subsp. *temuifolia* (Ten.) Nyman
N Italian peninsula (EMR, TOS); C Italian peninsula (UMB, LAZ, ABR, MOL); S Italian peninsula (PUG not confirmed, CAM, BAS, CAL); SIC; SAR
- Nepeta foliosa* Moris
SAR
- Phlomis tenorei* Soldano
S Italian peninsula (PUG, BAS, CAL doubtful)
- Salvia ceratophylloides* Ard.
S Italian peninsula (CAL)
- Salvia desoleana* Atzei & Picci
SAR
- Salvia haematodes* L.
C Italian peninsula (MAR doubtful, UMB, LAZ, ABR, MOL); S Italian peninsula (PUG, CAM, BAS, CAL)
- Salvia pratensis* L. subsp. *saccardiana* (Pamp.) Poldini
NE Italy (TAA, VEN, FVG)
- Scutellaria columnae* All. subsp. *gussonei* (Ten.) Arcang.
C Italian peninsula (ABR); S Italian peninsula (BAS, CAL); SIC
- Scutellaria rubicunda* Hornem.
SIC
- Stachys corsica* Pers.
SAR (Corsica)
- Stachys germanica* L. subsp. *dasyanthes* (Raf.) Arcang.
SIC
- Stachys glutinosa* L.
N Italian peninsula (TOS); SAR (Corsica)
- Stachys italica* Mill.
C Italian peninsula (MAR, UMB, LAZ, ABR, MOL); S Italian peninsula (PUG, CAM, BAS, CAL); SIC
- Stachys recta* L. subsp. *tenoreana* Bornm.
S Italian peninsula (CAM)
- Stachys salisii* Jord. & Fourr.
N Italian peninsula (TOS); SAR (Corsica)
- Teucrium siculum* (Raf.) Guss. subsp. *euganeum* (Vis.) Tornad.
NE Italy (VEN)
- Thymus paronychioides* Čelak.
SIC
- Thymus praecox* subsp. *parvulus* (Lojac.) Bartolucci, Peruzzi & N.G.Passal.
SIC
- Thymus richardii* Pers. subsp. *nitidus* (Guss.) Jalas
SIC
- Thymus spinulosus* Ten.
C Italian peninsula (LAZ not confirmed, MOL doubtful); S Italian peninsula (PUG, CAM not confirmed, BAS, CAL); SIC

Lentibulariaceae

- Pinguicula apuana* Casper & Ansaldi
N Italian peninsula (TOS)
- Pinguicula christinae* Peruzzi & Gestri
N Italian peninsula (EMR, TOS)
- Pinguicula fiorii* Tammaro & Pace
C Italian peninsula (ABR)
- Pinguicula lavalvae* Innangi & Izzo
S Italian peninsula (CAM)
- Pinguicula mariae* Casper
N Italian peninsula (TOS)
- Pinguicula poldinii* J.Steiger & Casper
NE Italy (TAA, VEN, FVG)
- Pinguicula vallis-regiae* F.Conti & Peruzzi
C Italian peninsula (ABR)
- Pinguicula vulgaris* L. subsp. *anzalonei* Peruzzi & F.Conti
C Italian peninsula (LAZ)
- Pinguicula vulgaris* L. subsp. *ernica* Peruzzi & F.Conti
C Italian peninsula (ABR)
- Pinguicula vulgaris* L. subsp. *vestina* F.Conti & Peruzzi
C Italian peninsula (ABR)

Oleaceae

- Fraxinus excelsior* L. subsp. *siciliensis* Ilardi & Raimondo
SIC

Orobanchaceae

- Euphrasia nana* (Rouy) Prain
SAR (Corsica)
- Euphrasia tricuspida* L. subsp. *tricuspida*
NE Italy (LOM, TAA, VEN, FVG)
- Melampyrum italicum* Soó
NW Italy (PIE); NE Italy (TAA, VEN); N Italian peninsula (LIG, TOS); C Italian peninsula (MAR, UMB, LAZ, ABR, MOL); S Italian peninsula (CAM, CAL)
- Melampyrum variegatum* Huter, Porta & Rigo ex Porta
C Italian peninsula (MAR, LAZ, ABR, MOL); S Italian peninsula (PUG, BAS, CAL)
- Odontites bocconeii* (Guss.) Walp. subsp. *angustifolius* (Lojac.) Giardina & Raimondo
SIC
- Odontites bocconeii* (Guss.) Walp. subsp. *bocconeii*
SIC
- Odontites corsicus* (Loisel.) G.Don
SAR (Corsica)
- Odontites rigidifolius* (Biv.) Benth.
SIC
- Orobanche australis* Bertol.
SAR

Orobanche chironii Lojac.
SIC

Orobanche denudata Moris
SAR

Orobanche ebuli Huter & Rigo
C Italian peninsula (LAZ, ABR)

Orobanche rigens Loisel.
SAR (Corsica)

Orobanche thapsoides Lojac.
SIC

Pedicularis elegans Ten.
C Italian peninsula (MAR, UMB, LAZ, ABR, MOL); S Italian peninsula (CAM, BAS, CAL)

Rhinanthus apuanus Soldano
N Italian peninsula (EMR, TOS)

Rhinanthus helenae Chabert
NE Italy (VEN not confirmed)

Rhinanthus wettsteinii (Sterneck) Soó
N Italian peninsula (TOS doubtful); C Italian peninsula (MAR, UMB, LAZ, ABR, MOL); S Italian peninsula (CAM, BAS)

Plantaginaceae

Anarrhinum corsicum Jord. & Fourr.
SAR (Corsica)

Antirrhinum siculum Mill.
N Italian peninsula (TOS); C Italian peninsula (LAZ); S Italian peninsula (PUG, CAM, CAL); SIC; SAR

Cymbalaria glutinosa Bigazzi & Raffaelli subsp. *brevicalcarata* Bigazzi & Raffaelli
S Italian peninsula (CAM)

Cymbalaria glutinosa Bigazzi & Raffaelli subsp. *glutinosa*
C Italian peninsula (LAZ, ABR, MOL)

Cymbalaria muelleri (Moris) A.Chev.
SAR

Cymbalaria pallida (Ten.) Wettst.
C Italian peninsula (LAZ, ABR, MOL)

Cymbalaria pubescens (C.Presl) Cufod.
SIC

Digitalis micrantha Roth ex Schweigg.
N Italian peninsula (EMR, TOS); C Italian peninsula (MAR, UMB, LAZ, ABR, MOL); S Italian peninsula (PUG, CAM, BAS, CAL); (Corsica)

Globularia incanescens Viv.
N Italian peninsula (LIG, EMR, TOS)

Globularia neapolitana O.Schwarz
S Italian peninsula (CAM)

Linaria arcusangeli Atzei & Camarda
SAR

Linaria capraria Moris & De Not.
N Italian peninsula (TOS)

Linaria flava (Poir.) Desf. subsp. *sardoa* (Sommier) A.Terracc.
SAR (Corsica)

- Linaria multicaulis* (L.) Mill. subsp. *aetnensis* Giardina & Zizza
SIC
- Linaria multicaulis* (L.) Mill. subsp. *humilis* (Guss.) De Leon., Giardina & Zizza
SIC
- Linaria multicaulis* (L.) Mill. subsp. *multicaulis*
S Italian peninsula (CAL, SIC)
- Linaria pseudolaxiflora* Lojac.
SIC (Malta)
- Linaria purpurea* (L.) Mill.
N Italian peninsula (EMR, TOS); C Italian peninsula (MAR, UMB, LAZ, ABR, MOL); S Italian peninsula (PUG, CAM, BAS, CAL); SIC
- Linaria tonzigii* Lona
NE Italy (LOM)
- Plantago media* L. subsp. *brutia* (Ten.) Arcang.
S Italian peninsula (BAS, CAL)
- Plantago peloritana* Lojac.
SIC
- Plantago sarda* C.Presl
SAR
- Veronica aphylla* L. subsp. *longistyla* (Ball) Arcang.
N Italian peninsula (TOS)
- Veronica verna* L. subsp. *brevistyla* (Moris) Rouy
SAR (Corsica)

Scrophulariaceae

- Scrophularia morisii* Vals.
SAR
- Scrophularia oblongifolia* Loisel.
SAR (Corsica)
- Scrophularia trifoliata* L.
N Italian peninsula (TOS); SAR (Corsica)
- Verbascum argenteum* Ten.
C Italian peninsula (ABR, MOL); S Italian peninsula (CAM not confirmed)
- Verbascum conocarpum* Moris subsp. *conocarpum*
N Italian peninsula (TOS); SAR (Corsica)
- Verbascum magellense* Ten.
C Italian peninsula (ABR); S Italian peninsula (BAS)
- Verbascum niveum* Ten. subsp. *garganicum* (Ten.) Murb.
C Italian peninsula (MAR, LAZ, ABR, MOL); S Italian peninsula (PUG)
- Verbascum niveum* Ten. subsp. *inarimense* Murb.
C Italian peninsula (LAZ); S Italian peninsula (CAM, BAS)
- Verbascum niveum* Ten. subsp. *niveum*
C Italian peninsula (ABR, MOL); S Italian peninsula (PUG, CAM not confirmed, BAS, CAL)
- Verbascum plantagineum* Moris
SAR
- Verbascum siculum* Tod. ex Lojac.
SIC

Asterales

Asteraceae

Achillea barrelieri (Ten.) Sch.Bip. subsp. *barrelieri*

C Italian peninsula (MAR, UMB, LAZ, ABR, MOL); S Italian peninsula (CAM)

Achillea barrelieri (Ten.) Sch.Bip. subsp. *elegans* (Fiori & Bég.) Bazzich.

C Italian peninsula (MAR, LAZ, ABR)

Achillea barrelieri (Ten.) Sch.Bip. subsp. *mucronulata* (Bertol.) Heimerl

C Italian peninsula (MAR, UMB, ABR, MOL doubtful); S Italian peninsula (CAM, BAS, CAL)

Achillea rupestris Huter, Porta & Rigo subsp. *calcareae* (Huter, Porta & Rigo) Greuter

S Italian peninsula (BAS, CAL)

Achillea rupestris Huter, Porta & Rigo subsp. *rupestris*

S Italian peninsula (CAL)

Achillea tenorei Grande

C Italian peninsula (MAR, UMB, LAZ, ABR, MOL); S Italian peninsula (PUG, CAM, BAS, CAL)

Adenostyles alpina (L.) Bluff & Fingerh. subsp. *macrocephala* (Huter, Porta & Rigo) M.Dillenberger & Kadereit

S Italian peninsula (CAL)

Adenostyles alpina (L.) Bluff & Fingerh. subsp. *nebrodensis* (Wagenitz & I.Müll.) Greuter

SIC

Andryala tenuifolia (Tineo) DC.

N Italian peninsula (TOS); C Italian peninsula (MAR); S Italian peninsula (CAM); SIC; SAR (Corsica)

Anthemis aetnensis Spreng.

SIC

Anthemis arvensis L. subsp. *sphacelata* (C.Presl) R.Fern.

C Italian peninsula (ABR); S Italian peninsula (PUG, CAM, BAS, CAL); SIC

Anthemis cretica L. subsp. *alpina* (L.) R.Fern.

C Italian peninsula (UMB doubtful, ABR)

Anthemis cretica L. subsp. *calabrica* (Arcang.) R.Fern.

S Italian peninsula (CAL)

Anthemis cretica L. subsp. *messanensis* (Brullo) Giardina & Raimondo

SIC

Anthemis cretica L. subsp. *petraea* (Ten.) Greuter

C Italian peninsula (ABR)

Anthemis cupaniana Tod. ex Nyman

SIC

Anthemis hydruntina H.Groves subsp. *hydruntina*

S Italian peninsula (PUG, BAS)

Anthemis hydruntina H.Groves subsp. *silensis* (Fiori) Brullo, Gangale & Uzunov

S Italian peninsula (CAL)

Anthemis ismelia Lojac.

SIC

Anthemis muricata (DC.) Guss.

SIC

Anthemis pignattiorum Guarino, Raimondo & Domina

SIC

Artemisia caerulescens L. subsp. *cretacea* (Fiori) Brillii-Catt. & Gubellini

N Italian peninsula (EMR, TOS); C Italian peninsula (MAR, UMB, LAZ)

- Artemisia campestris* L. subsp. *variabilis* (Ten.) Greuter
C Italian peninsula (LAZ, ABR, MOL); S Italian peninsula (PUG, CAM, BAS, CAL); SIC; SAR
- Artemisia gallica* Willd. subsp. *densiflora* (Viv.) Gamisans
SAR (Corsica)
- Bellis margaritifolia* Huter, Porta & Rigo
S Italian peninsula (CAM not confirmed, BAS, CAL); SIC
- Bellium crassifolium* Moris
SAR
- Buphthalmum inuloides* Moris
SAR
- Buphthalmum salicifolium* L. subsp. *flexile* (Bertol.) Garbari
NW Italy (PIE doubtful); N Italian peninsula (LIG doubtful, TOS)
- Calendula incana* Willd. subsp. *maritima* (Guss.) Ohle
SIC (Ma?); SAR
- Carduus affinis* Guss. subsp. *affinis*
C Italian peninsula (MAR, UMB, LAZ, ABR, MOL); S Italian peninsula (CAM, BAS, CAL)
- Carduus affinis* Guss. subsp. *brutius* (Huter, Porta & Rigo ex Huter) Peruzzi
S Italian peninsula (BAS doubtful, CAL)
- Carduus corymbosus* Ten.
C Italian peninsula (ABR, MOL); S Italian peninsula (PUG, CAM, BAS, CAL); SIC; SAR
- Carduus fasciculiflorus* Viv.
N Italian peninsula (TOS); S Italian peninsula (BAS doubtful); SAR (Corsica)
- Carduus nutans* L. subsp. *perspinosus* (Fiori) Arènes
N Italian peninsula (TOS); C Italian peninsula (MAR, LAZ, ABR, MOL); S Italian peninsula (PUG, CAM, BAS, CAL doubtful)
- Carduus nutans* L. subsp. *siculus* (Franco) Greuter
SIC
- Carduus pycnocephalus* L. subsp. *intermedius* (Lojac.) Giardina & Raimondo
SIC
- Carduus sardous* DC.
N Italian peninsula (EMR, TOS); SAR (Corsica)
- Carlina hispanica* Lam. subsp. *globosa* (Arcang.) Meusel & Kästner
S Italian peninsula (CAL); SIC
- Carlina nebrodensis* Guss. ex DC.
S Italian peninsula (CAL); SIC
- Carlina sicula* Ten. subsp. *sicula*
SIC
- Castroviejoa frigida* (Labill.) Galbany, L.Sáez & Benedí
SAR not confirmed (Corsica). The whole genus *Castroviejoa* (two species) is endemic to Sardinia and Corse (Galbany *et al.* 2004).
- Castroviejoa montelinasana* (Em.Schmid) Galbany, L.Sáez & Benedí
SAR
- Centaurea aeolica* Guss. ex Lojac. subsp. *aeolica*
SIC
- Centaurea aeolica* Guss. ex Lojac. subsp. *pandataria* (Fiori & Bég.) Anzal.
C Italian peninsula (LAZ)
- Centaurea aetaliae* (Sommier) Bég.
N Italian peninsula (TOS)

- Centaurea ambigua* Guss. subsp. *ambigua*
C Italian peninsula (MAR, UMB doubtful, LAZ, ABR, MOL); S Italian peninsula (CAM doubtful)
- Centaurea ambigua* Guss. subsp. *laciniata* (Guss. ex DC.) Arcang.
N Italian peninsula (TOS); C Italian peninsula (ABR)
- Centaurea ambigua* Guss. subsp. *nigra* (Fiori) Pignatti
C Italian peninsula (MAR, UMB doubtful, LAZ, ABR, MOL)
- Centaurea aplolepa* Moretti subsp. *aplolepa*
NW Italy (PIE); N Italian peninsula (LIG)
- Centaurea aplolepa* Moretti subsp. *bertolonii* (Arrigoni) Greuter
N Italian peninsula (LIG)
- Centaurea aplolepa* Moretti subsp. *carueliana* (Micheletti) Dostál
N Italian peninsula (LIG, TOS)
- Centaurea aplolepa* Moretti subsp. *cosana* (Fiori) Dostál
N Italian peninsula (TOS)
- Centaurea aplolepa* Moretti subsp. *gallinariae* (Briq. & Cavill.) Dostál
N Italian peninsula (LIG)
- Centaurea aplolepa* Moretti subsp. *levantina* (Arrigoni) Greuter
N Italian peninsula (LIG)
- Centaurea aplolepa* Moretti subsp. *lumensis* (Fiori) Dostál
N Italian peninsula (LIG, EMR, TOS)
- Centaurea aplolepa* Moretti subsp. *maremmana* (Fiori) Dostál
N Italian peninsula (TOS)
- Centaurea aplolepa* Moretti subsp. *parvula* (Ces.) Arcang.
N Italian peninsula (LIG)
- Centaurea aplolepa* Moretti subsp. *subciliata* (DC.) Arcang.
N Italian peninsula (LIG extinct, TOS)
- Centaurea arachnoidea* Viv. subsp. *arachnoidea*
N Italian peninsula (TOS)
- Centaurea arachnoidea* Viv. subsp. *montis-ferrati* Ricceri, Moraldo & F.Conti
N Italian peninsula (TOS)
- Centaurea arrigonii* Greuter
N Italian peninsula (EMR, TOS); C Italian peninsula (MAR, UMB)
- Centaurea aspromontana* Brullo, Scelsi & Spamp.
S Italian peninsula (CAL)
- Centaurea brulla* Greuter
S Italian peninsula (PUG, BAS)
- Centaurea bugellensis* (Soldano) Soldano
NW Italy (PIE)
- Centaurea busambarensis* Guss.
SIC
- Centaurea calabra* G.Caruso, S.A.Giardina, Raimondo & Spadaro
S Italian peninsula (CAL)
- Centaurea centauroides* L.
C Italian peninsula (MOL); S Italian peninsula (PUG, CAM, BAS)
- Centaurea ceratophylla* Ten. subsp. *ceratophylla*
C Italian peninsula (MAR, LAZ, ABR)
- Centaurea cineraria* L. subsp. *cineraria*
C Italian peninsula (LAZ); S Italian peninsula (CAM, BAS, CAL)

- Centaurea cineraria* L. subsp. *circae* (Sommier) Cela Renz. & Viegi
C Italian peninsula (LAZ)
- Centaurea corensis* Vals. & Filigh.
SAR
- Centaurea diomedeae* Gasp.
S Italian peninsula (PUG)
- Centaurea erycina* Raimondo & Bancheva
SIC
- Centaurea filiformis* Viv. subsp. *ferulacea* (Martelli) Arrigoni
SAR
- Centaurea filiformis* Viv. subsp. *filiformis*
SAR
- Centaurea giardinae* Raimondo & Spadaro
SIC
- Centaurea gussonei* Raimondo & Spadaro
SIC
- Centaurea gymnocarpa* Moris & De Not.
N Italian peninsula (TOS)
- Centaurea horrida* Badarò
SAR
- Centaurea iapygica* (Lacaita) Brullo
S Italian peninsula (PUG)
- Centaurea ilvensis* (Sommier) Arrigoni
N Italian peninsula (TOS)
- Centaurea ionica* Brullo
S Italian peninsula (CAL)
- Centaurea jacea* L. subsp. *forojulensis* (Poldini) Greuter
NE Italy (FVG)
- Centaurea kartschiana* Scop. subsp. *kartschiana*
NE Italy (FVG)
- Centaurea lacaitae* Peruzzi
S Italian peninsula (CAM)
- Centaurea leucadea* Lacaita
S Italian peninsula (PUG)
- Centaurea leucophaea* Jord. subsp. *brunnescens* (Briq.) Dostál
N Italian peninsula (LIG)
- Centaurea litigiosa* (Fiori) Arrigoni
N Italian peninsula (TOS)
- Centaurea macroacantha* Guss.
SIC
- Centaurea magistrorum* Arrigoni & Camarda
SAR
- Centaurea montaltensis* (Fiori & Bég.) Peruzzi
S Italian peninsula (CAM)
- Centaurea montis-borlae* Soldano
N Italian peninsula (TOS)
- Centaurea nigrescens* Willd. subsp. *neapolitana* (Boiss.) Dostál
C Italian peninsula (MAR, UMB, LAZ, ABR, MOL); S Italian peninsula (PUG doubtful, CAM, BAS, CAL)

Centaurea nigrescens Willd. subsp. *pinnatifida* (Fiori) Dostál
 N Italian peninsula (EMR, TOS); C Italian peninsula (ABR)

Centaurea nobilis (H.Groves) Brullo
 S Italian peninsula (PUG)

Centaurea panormitana Lojac. subsp. *panormitana*
 SIC

Centaurea panormitana Lojac. subsp. *seguenzae* (Lacaita) Greuter
 SIC

Centaurea panormitana Lojac. subsp. *todaroi* (Lacaita) Greuter
 SIC

Centaurea panormitana Lojac. subsp. *ucraiae* (Lacaita) Greuter
 SIC

Centaurea panormitana Lojac. subsp. *umbrosa* (Fiori) Greuter
 SIC

Centaurea parlatoris Heldr. subsp. *parlatoris*
 SIC

Centaurea parlatoris Heldr. subsp. *virescens* (Guss.) Raimondo & Bancheva
 SIC

Centaurea pentadactyli Brullo, Scelsi & Spamp.
 S Italian peninsula (CAL)

Centaurea poeltiana Puntillo
 S Italian peninsula (CAL)

Centaurea saccensis Raimondo, Bancheva & Ilardi
 SIC

Centaurea sarfattiana Brullo, Gangale & Uzunov
 S Italian peninsula (CAL)

Centaurea scannensis Anzal., Soldano & F.Conti
 C Italian peninsula (ABR)

Centaurea scillae Brullo
 S Italian peninsula (CAL)

Centaurea sicana Raimondo & Spadaro
 SIC

Centaurea solstitialis L. subsp. *schouwii* (DC.) Gugler
 S Italian peninsula (CAL); SIC; SAR

Centaurea subtilis Bertol.
 S Italian peninsula (PUG, BAS)

Centaurea tauromenitana Guss.
 SIC

Centaurea tenacissima (H.Groves) Brullo
 S Italian peninsula (PUG, BAS)

Centaurea tenoreana Willk.
 C Italian peninsula (ABR)

Centaurea tenorei Guss. ex Lacaita
 S Italian peninsula (CAM)

Centaurea veneris (Sommier) Bég.
 N Italian peninsula (LIG)

Chiliadenus lopadusanus Brullo
 SIC

- Cirsium alpis-lunae* Brilli-Catt. & Gubellini
N Italian peninsula (EMR, TOS); C Italian peninsula (MAR)
- Cirsium bertolonii* Spreng.
N Italian peninsula (EMR, TOS)
- Cirsium lacaitae* Petr.
S Italian peninsula (CAM)
- Cirsium lobelii* Ten.
C Italian peninsula (MAR, UMB, LAZ, ABR, MOL); S Italian peninsula (CAM, BAS doubtful)
- Cirsium tenoreanum* Petr.
N Italian peninsula (EMR, TOS); C Italian peninsula (MAR, UMB, LAZ, ABR, MOL); S Italian peninsula (PUG, CAM, BAS, CAL)
- Cirsium vallis-demonii* Lojac.
S Italian peninsula (CAL); SIC
- Crepis apula* (Fiori) Babc.
S Italian peninsula (PUG, BAS, CAL)
- Crepis aspromontana* Brullo, Scelsi & Spamp.
S Italian peninsula (CAL)
- Crepis magellensis* F.Conti & Uzunov
C Italian peninsula (ABR)
- Crepis sprengeli* Nicotra
S Italian peninsula (CAL not confirmed); SIC
- Crepis vesicaria* L. subsp. *bivoniana* (Soldano & F.Conti) Giardina & Raimondo
SIC
- Crepis vesicaria* L. subsp. *hyemalis* (Biv.) Babc.
SIC; SAR
- Echinops siculus* Strobl
N Italian peninsula (EMR, TOS); C Italian peninsula (MAR doubtful, UMB, LAZ, ABR, MOL); S Italian peninsula (PUG, CAM, BAS, CAL); SIC
- Filago tyrrhenica* Chrtek & Holub
SAR (Corsica)
- Helichrysum errerae* Tineo
SIC
- Helichrysum hyblaeum* Brullo
SIC
- Helichrysum italicum* (Roth) G.Don subsp. *pseudolitoreum* (Fiori) Bacch., Brullo & Mossa
N Italian peninsula (TOS); S Italian peninsula (PUG); SAR
- Helichrysum litoreum* Guss.
N Italian peninsula (TOS); C Italian peninsula (LAZ); S Italian peninsula (CAM); SIC; SAR
- Helichrysum nebrodense* Heldr. ex Guss.
SIC
- Helichrysum panormitanum* Tineo ex Guss.
SIC
- Helichrysum pendulum* (C.Presl) C.Presl
N Italian peninsula (TOS doubtful); S Italian peninsula (CAM doubtful); SIC
- Helichrysum saxatile* Moris subsp. *morisianum* Bacch., Brullo & Mossa
SAR
- Helichrysum saxatile* Moris subsp. *saxatile*
SAR

- Hieracium acanthodontoides* Arv.-Touv. & Belli
C Italian peninsula (LAZ, ABR); S Italian peninsula (PUG)
- Hieracium amphiseriphorum* Zahn
NW Italy (PIE)
- Hieracium antholzense* Zahn
NE Italy (TAA)
- Hieracium aspromontanum* Brullo, Scelsi & Spamp.
S Italian peninsula (CAL)
- Hieracium atrocalyx* Gottschl.
NE Italy (FVG)
- Hieracium beyeri* Zahn
NW Italy (PIE)
- Hieracium boreoapenninum* Gottschl.
N Italian peninsula (LIG, EMR, TOS)
- Hieracium bornetii* Burnat & Gremli
NW Italy (PIE); N Italian peninsula (EMR, TOS); C Italian peninsula (MAR)
- Hieracium brillii* Gottschl.
C Italian peninsula (MAR)
- Hieracium busambarensense* Caldarella, Gianguzzi & Gottschl.
SIC
- Hieracium carpegnae* Gottschl.
C Italian peninsula (MAR)
- Hieracium cavallense* Gottschl.
C Italian peninsula (ABR)
- Hieracium chiariglionei* Gottschl.
NW Italy (PIE)
- Hieracium cirritogenes* Zahn
NW Italy (PIE)
- Hieracium contii* Gottschl.
C Italian peninsula (ABR)
- Hieracium cophanense* Lojac.
SIC
- Hieracium cornuscalae* Gottschl.
N Italian peninsula (EMR)
- Hieracium dunkelii* Gottschl.
NE Italy (TAA)
- Hieracium duronense* Gottschl.
NE Italy (TAA)
- Hieracium exilicaule* Gottschl.
C Italian peninsula (ABR)
- Hieracium faucis-jovis* Gottschl.
N Italian peninsula (EMR, TOS)
- Hieracium galeroides* Gottschl.
C Italian peninsula (ABR)
- Hieracium grovesianum* Arv.-Touv. ex Belli
NW Italy (PIE); NE Italy (VEN); N Italian peninsula (LIG, EMR, TOS); C Italian peninsula (MAR, UMB, LAZ, ABR); S Italian peninsula (BAS, CAL)
- Hieracium insubricum* Gottschl.
NE Italy (LOM)

Hieracium latilepidotum Gottschl.
C Italian peninsula (ABR)

Hieracium lucidum Guss.
SIC

Hieracium macrogrovesianum Gottschl.
C Italian peninsula (MAR)

Hieracium marchesonii Gottschl.
C Italian peninsula (MAR)

Hieracium marsorum Gottschl.
C Italian peninsula (ABR)

Hieracium montis-florum Gottschl.
C Italian peninsula (ABR)

Hieracium montis-porrarae Gottschl.
C Italian peninsula (ABR)

Hieracium neofilicaule Gottschl.
C Italian peninsula (LAZ, ABR)

Hieracium neronense Gottschl.
C Italian peninsula (MAR)

Hieracium niveobarbatum Arv.-Touv. ex Gottschl.
NE Italy (VEN, FVG)

Hieracium nubitantens Gottschl.
C Italian peninsula (ABR)

Hieracium orodoxum Gottschl.
C Italian peninsula (ABR)

Hieracium orsiera Gottschl.
NW Italy (PIE)

Hieracium permaculatum Gottschl.
C Italian peninsula (ABR)

Hieracium picenorum Gottschl.
C Italian peninsula (ABR)

Hieracium pietrae Zahn
C Italian peninsula (ABR)

Hieracium pioracense Gottschl.
C Italian peninsula (MAR)

Hieracium pizense Zahn
NW Italy (PIE)

Hieracium pollinense Zahn
S Italian peninsula (BAS)

Hieracium portanum Belli
S Italian peninsula (BAS, CAL)

Hieracium pratorum-tivi Gottschl.
C Italian peninsula (ABR)

Hieracium profetanum Belli
C Italian peninsula (ABR)

Hieracium pseudaustrale Gottschl.
C Italian peninsula (MAR)

Hieracium pseudogrovesianum Gottschl.
C Italian peninsula (LAZ, ABR)

- Hieracium pseudopallidum* Gottschl.
C Italian peninsula (ABR)
- Hieracium pujattii* Gottschl.
NE Italy (TAA)
- Hieracium rottii* Gottschl.
NE Italy (LOM)
- Hieracium segusianum* Gottschl.
NW Italy (PIE)
- Hieracium semicanescens* Gottschl.
N Italian peninsula (EMR)
- Hieracium semipallescens* Gottschl.
C Italian peninsula (MAR)
- Hieracium simbruinicum* Gottschl.
C Italian peninsula (ABR)
- Hieracium strafforelloanum* Zahn
NW Italy (PIE)
- Hieracium symphytifolium* Froel.
SIC
- Hieracium thesauranum* Gottschl.
C Italian peninsula (ABR)
- Hieracium tolstooi* Fen. & Zahn
NE Italy (LOM, TAA, FVG)
- Hieracium tonalense* Gottschl.
NE Italy (TAA)
- Hieracium torrigliense* Gottschl.
N Italian peninsula (LIG, EMR)
- Hieracium umbrosoides* Gottschl.
N Italian peninsula (EMR, TOS)
- Hieracium venostorum* (Zahn) Gottschl.
NE Italy (TAA)
- Hieracium venticaesum* Gottschl.
C Italian peninsula (ABR)
- Hieracium volaiense* Gottschl.
NE Italy (FVG)
- Hypochaeris facchiniana* Ambrosi
NE Italy (TAA, VEN)
- Hypochaeris robertia* (Sch.Bip.) Fiori
NW Italy (PIE); NE Italy (LOM); N Italian peninsula (LIG, EMR, TOS); C Italian peninsula (MAR, UMB, LAZ, ABR, MOL); S Italian peninsula (CAM, BAS, CAL doubtful); SIC; SAR (Corsica)
- Jacobaea alpina* (L.) Moench subsp. *samnitum* (Nyman) Peruzzi
C Italian peninsula (MAR, UMB, LAZ, ABR, MOL); S Italian peninsula (BAS, CAL)
- Jacobaea ambigua* (Biv.) Pelsler & Veldkamp subsp. *ambigua*
SIC
- Jacobaea ambigua* (Biv.) Pelsler & Veldkamp subsp. *nebrodensis* (Guss.) Peruzzi & N.G.Passal. & C.E.Jarvis
SIC
- Jacobaea lycopifolia* (Poir.) Greuter & B.Nord.
S Italian peninsula (PUG not confirmed, CAM not confirmed, BAS); SIC
- Jacobaea maritima* (L.) Pelsler & Meijden subsp. *bicolor* (Willd.) B.Nord. & Greuter
C Italian peninsula (LAZ); S Italian peninsula (CAM, CAL); SIC

- Jacobaea maritima* (L.) Pelser & Meijden subsp. *gibbosa* (Guss.) Peruzzi & N.G.Passal. & C.E.Jarvis
S Italian peninsula (CAL); SIC
- Jacobaea persoonii* (De Not.) Pelser
NW Italy (PIE)
- Jurinea bocconeii* (Guss.) Guss.
SIC
- Klasea flavescens* (L.) Holub subsp. *cichoracea* (L.) Greuter & Wagenitz
N Italian peninsula (TOS); C Italian peninsula (UMB doubtful, LAZ, ABR, MOL); S Italian peninsula (PUG, CAM, BAS, CAL); SIC
- Lactuca longidentata* Moris
SAR
- Lamyropsis microcephala* (Moris) Dittrich & Greuter
SAR
- Leontodon anomalus* Ball
NW Italy (PIE); N Italian peninsula (LIG, EMR, TOS)
- Leontodon apulus* (Fiori) Brullo
S Italian peninsula (PUG, BAS)
- Leontodon intermedius* Huter, Porta & Rigo ex Huter
C Italian peninsula (LAZ, ABR); S Italian peninsula (PUG, BAS, CAL); SIC
- Leontodon siculus* (Guss.) Nyman
SIC
- Leucanthemum coronopifolium* Vill. subsp. *tenuifolium* (Guss.) Vogt & Greuter
C Italian peninsula (MAR doubtful, ABR, MOL); S Italian peninsula (CAM)
- Leucanthemum laciniatum* Huter, Porta & Rigo
S Italian peninsula (CAM, BAS, CAL)
- Leucanthemum ligusticum* Marchetti, R.Bernardello, Melai & Peruzzi
N Italian peninsula (LIG)
- Leucanthemum tridactylites* (A.Kern. & Huter) Huter, Porta & Rigo
C Italian peninsula (LAZ, ABR, MOL)
- Nananthea perpusilla* (Loisel.) DC.
SAR (Corsica). The monotypic genus *Nananthea* is endemic to Sardinia and Corse.
- Phagnalon rupestre* (L.) DC. subsp. *morisianum* (Ces., Pass. & Gibelli) Arcang.
SAR
- Picris scaberrima* Ten.
S Italian peninsula (PUG, CAM doubtful, BAS, CAL)
- Pilosella calabra* (Nägeli & Peter) Soják
C Italian peninsula (MOL); S Italian peninsula (BAS, CAL)
- Pilosella cepitina* (Gottschl.) Gottschl.
C Italian peninsula (ABR)
- Pilosella corvigena* (Gottschl.) Gottschl.
C Italian peninsula (ABR)
- Pilosella kralikii* (Rouy) J.-M.Tison
SAR (Corsica)
- Pilosella lathraea* (Peter) Soják
NE Italy (LOM, TAA)
- Pilosella macranthiformis* (Zahn) S.Bräut. & Greuter
C Italian peninsula (ABR)
- Pilosella medioposita* (Gottschl.) Gottschl.
NE Italy (TAA, VEN)

- Pilosella neogelmii* (Gottschl.) Gottschl.
NE Italy (TAA, VEN)
- Pilosella pachycymigera* (Gottschl.) Gottschl.
NE Italy (TAA, VEN)
- Pilosella pseudolactucella* Gottschl.
C Italian peninsula (MAR)
- Pilosella salernicola* (J.Vetter & Zahn) Soják
NE Italy (TAA)
- Pilosella schizosciadia* Gottschl.
C Italian peninsula (MAR, UMB)
- Pilosella sciadogena* Gottschl.
C Italian peninsula (MAR)
- Plagius flosculosus* (L.) Alavi & Heywood
SAR (Corsica)
- Ptilostemon greuteri* Raimondo & Domina
SIC
- Ptilostemon niveus* (C.Presl) Greuter
S Italian peninsula (BAS, CAL); SIC
- Rhaponticoides calabrica* Puntillo & Peruzzi
S Italian peninsula (BAS, CAL)
- Rhaponticoides centaurium* (L.) M.V.Agab. & Greuter
C Italian peninsula (ABR doubtful); S Italian peninsula (PUG, BAS)
- Santolina corsica* Jord. & Fourr.
SAR (Corsica)
- Santolina etrusca* (Lacaita) Marchi & D'Amato
N Italian peninsula (TOS); C Italian peninsula (UMB, LAZ)
- Santolina insularis* (Gennari ex Fiori & Bég.) Arrigoni
SAR
- Santolina leucantha* Bertol.
N Italian peninsula (TOS)
- Santolina ligustica* Arrigoni
N Italian peninsula (LIG)
- Santolina neapolitana* Jord. & Fourr.
S Italian peninsula (CAM)
- Scorzonera callosa* Moris
SAR
- Scorzonera hispanica* L. subsp. *neapolitana* (Grande) Greuter
C Italian peninsula (LAZ); S Italian peninsula (PUG not confirmed, CAM not confirmed, BAS, CAL)
- Scorzoneroides montana* (Lam.) Holub subsp. *breviscapa* (DC.) Greuter
C Italian peninsula (MAR, UMB, LAZ, ABR)
- Scorzoneroides muelleri* (Sch.Bip.) Greuter subsp. *muelleri*
N Italian peninsula (LIG not confirmed); SIC; SAR
- Senecio glaucus* L. subsp. *hyblaeus* Brullo
SIC
- Senecio nemorensis* L. subsp. *apuanus* (Tausch) Greuter
N Italian peninsula (TOS)
- Senecio ovatus* (P.Gaertn., B.Mey. & Scherb.) Willd. subsp. *stebianus* (Lacaita) Greuter
N Italian peninsula (EMR); C Italian peninsula (LAZ, ABR, MOL); S Italian peninsula (CAM, BAS, CAL)

- Senecio scopolii* Hoppe & Hornsch. ex Bluff & Fingerh. subsp. *floccosus* (Bertol.) Greuter
C Italian peninsula (MAR, UMB, LAZ, ABR, MOL); S Italian peninsula (PUG, CAM, BAS, CAL)
- Senecio squalidus* L. subsp. *aethnensis* (DC.) Greuter
SIC
- Senecio squalidus* L. subsp. *calabrus* (Fiori) Peruzzi & Bernardo
S Italian peninsula (CAL); SIC doubtful
- Senecio squalidus* L. subsp. *chrysanthemifolius* (Poir.) Greuter
S Italian peninsula (CAL); SIC; SAR
- Senecio squalidus* L. subsp. *microglossus* (Guss.) Arcang.
SIC
- Senecio squalidus* L. subsp. *sardous* Greuter
SAR
- Senecio squalidus* L. subsp. *squalidus*
SIC
- Senecio transiens* (Rouy) Jeanm.
SAR (Corsica)
- Solidago litoralis* Savi
N Italian peninsula (LIG extinct, TOS)
- Tanacetum audibertii* (Req.) DC.
SAR (Corsica)
- Tanacetum vulgare* L. subsp. *siculum* (Guss.) Raimondo & Spadaro
SIC
- Taraxacum aemilianum* Foggi & Ricceri
N Italian peninsula (EMR, TOS)
- Taraxacum annalisae* Carlesi & Peruzzi
S Italian peninsula (CAM)
- Taraxacum barbaricinum* Arrigoni
SAR
- Taraxacum calabricum* Aquaro, Caparelli & Peruzzi
S Italian peninsula (BAS, CAL)
- Taraxacum caramanicae* Lojac.
SIC; SAR
- Taraxacum carthusianorum* Aquaro, Caparelli & Peruzzi
S Italian peninsula (CAL)
- Taraxacum cescae* Aquaro, Caparelli & Peruzzi
C Italian peninsula (MAR, LAZ); S Italian peninsula (CAL)
- Taraxacum garbarianum* Peruzzi, Aquaro, Caparelli & Raimondo
SIC; SAR
- Taraxacum genargenteum* Arrigoni
SAR
- Taraxacum gianninii* Arrigoni, Ferretti & Padula
N Italian peninsula (TOS)
- Taraxacum glaciale* É.Huet & A.Huet ex Hand.-Mazz.
C Italian peninsula (LAZ, ABR, MOL)
- Taraxacum kirschneri* Aquaro, Caparelli & Peruzzi
S Italian peninsula (CAL)
- Taraxacum lacustre* Soest
NE Italy (TAA)

- Taraxacum lilianae* Aquaro, Caparelli & Peruzzi
S Italian peninsula (BAS)
- Taraxacum lucense* Arrigoni, Ferretti & Padula
N Italian peninsula (TOS)
- Taraxacum mannoccii* Carlesi & Peruzzi
N Italian peninsula (TOS)
- Taraxacum optimae* Aquaro, Caparelli & Peruzzi
S Italian peninsula (CAL)
- Taraxacum pollinense* Aquaro, Caparelli & Peruzzi
S Italian peninsula (CAL)
- Taraxacum sarcidanum* Arrigoni
SAR
- Taraxacum sardomontanum* Arrigoni
SAR
- Taraxacum siculum* Soest
S Italian peninsula (CAL); SIC
- Taraxacum vallis-nibulae* Arrigoni
N Italian peninsula (TOS)
- Tephroseris italica* Holub
NW Italy (PIE); N Italian peninsula (LIG, EMR, TOS); C Italian peninsula (MAR, ABR doubtful)
- Tolpis virgata* (Desf.) Bertol. subsp. *grandiflora* (Ten.) Arcang.
C Italian peninsula (UMB, ABR); S Italian peninsula (PUG, CAM, BAS, CAL); SIC
- Tragopogon crocifolius* L. subsp. *nebrodensis* (Guss.) Raimondo
C Italian peninsula (ABR); S Italian peninsula (CAM, BAS, CAL); SIC
- Tragopogon porrifolius* L. subsp. *cupanii* (Guss. ex DC.) I. Richardson
C Italian peninsula (MOL); S Italian peninsula (PUG, CAM, BAS, CAL); SIC
- Tragopogon porrifolius* L. subsp. *eriospermus* (Ten.) Greuter
C Italian peninsula (LAZ, ABR, MOL); S Italian peninsula (CAM, BAS, CAL)
- Tripolium sorrentinoi* (Tod.) Raimondo & Greuter
SIC
- Xerolekia speciosissima* (L.) Anderb.
NE Italy (LOM, TAA)

Campanulaceae

- Asyneuma trichocalycinum* (Ten.) K. Malý
C Italian peninsula (ABR not confirmed); S Italian peninsula (CAM, BAS, CAL); SIC not confirmed
- Campanula bertolae* Colla
NW Italy (VDA doubtful, PIE)
- Campanula carnica* Mert. & W.D.J. Koch subsp. *puberula* Podlech
NE Italy (LOM, VEN)
- Campanula elatines* L.
NW Italy (PIE)
- Campanula elatinoïdes* Moretti
NE Italy (LOM, VEN)
- Campanula forsythii* (Arcang.) Bég.
SAR
- Campanula fragilis* Cirillo subsp. *cavolinii* (Ten.) Damboldt
C Italian peninsula (LAZ, ABR, MOL)

- Campanula fragilis* Cirillo subsp. *fragilis*
C Italian peninsula (LAZ doubtful); S Italian peninsula (CAM, BAS, CAL)
- Campanula garganica* Ten. subsp. *garganica*
S Italian peninsula (PUG)
- Campanula isophylla* Moretti
N Italian peninsula (LIG)
- Campanula martinii* F.Fen., Pistarino, Peruzzi & Cellin.
NE Italy (LOM, TAA)
- Campanula micrantha* Bertol.
C Italian peninsula (MAR, UMB, LAZ, ABR, MOL); S Italian peninsula (CAM)
- Campanula morettiana* Rchb.
NE Italy (TAA, VEN, FVG)
- Campanula petraea* L.
NE Italy (LOM not confirmed, TAA, VEN)
- Campanula raineri* Perp.
NE Italy (LOM, TAA)
- Campanula reatina* Lucchese
C Italian peninsula (LAZ)
- Campanula sabatia* De Not.
NW Italy (PIE); N Italian peninsula (LIG)
- Campanula scheuchzeri* Vill. subsp. *pollinensis* (Podlech) Bernardo, Gargano & Peruzzi
S Italian peninsula (CAM, BAS, CAL); SIC
- Campanula scheuchzeri* Vill. subsp. *pseudostenocodon* (Lacaita) Bernardo, Gargano & Peruzzi
C Italian peninsula (MAR, LAZ, ABR); S Italian peninsula (CAM, BAS, CAL)
- Campanula tanfanii* Podlech
C Italian peninsula (MAR, UMB, LAZ, ABR, MOL doubtful)
- Edraianthus graminifolius* (L.) A.DC. subsp. *siculus* (Strobl) Greuter & Burdet
S Italian peninsula (CAM, BAS, CAL); SIC
- Jasione sphaerocephala* Brullo, Marcenò & Pavone
S Italian peninsula (CAL)
- Solenopsis corsica* (Meikle) M.B.Crespo, Serra & Juan
SAR (Corsica)
- Solenopsis mothiana* C.Brullo, Brullo & Giusso
SIC
- Trachelium caeruleum* L. subsp. *lanceolatum* (Guss.) Arcang.
SIC

Dipsacales

Adoxaceae

- Adoxa moschatellina* L. subsp. *cescae* Peruzzi & N.G.Passal.
S Italian peninsula (CAL)

Caprifoliaceae

- Centranthus amazonum* Fridl. & A.Raynal
SAR (Corsica)

- Cephalaria bigazzii* Bacch., Brullo & Giusso
SAR
- Cephalaria squamiflora* (Sieber) Greuter subsp. *mediterranea* (Viv.) Pignatti
SAR (Corsica)
- Dipsacus ferox* Loisel.
C Italian peninsula (ABR, MOL doubtful); SAR (Corsica)
- Dipsacus valsecchiae* Camarda
SAR
- Knautia baldensis* A.Kern. ex Borbás
NE Italy (LOM, TAA, VEN)
- Knautia dinarica* (Murb.) Borbás subsp. *silana* (Grande) Ehrend.
C Italian peninsula (ABR); S Italian peninsula (BAS, CAL)
- Knautia gussonei* Szabó
C Italian peninsula (MAR, LAZ, ABR)
- Knautia lucana* (Lacaita) Szabó
S Italian peninsula (BAS)
- Knautia persicina* A.Kern.
NE Italy (LOM, TAA, VEN)
- Lomelosia crenata* (Cirillo) Greuter & Burdet subsp. *pseudisetensis* (Lacaita) Greuter & Burdet
C Italian peninsula (MAR, LAZ, ABR, MOL); S Italian peninsula (PUG, CAM, BAS, CAL)
- Lonicera stabiana* Guss. & Pasq.
S Italian peninsula (CAM)
- Pseudoscabiosa limonifolia* (Vahl) Devesa
SIC
- Scabiosa holosericea* Bertol.
NW Italy (PIE); N Italian peninsula (LIG, EMR doubtful, TOS); C Italian peninsula (LAZ, ABR, MOL); S Italian peninsula (CAM, BAS, CAL); SAR
- Scabiosa parviflora* Desf.
SIC
- Scabiosa uniseta* Savi
NE Italy (VEN doubtful); N Italian peninsula (LIG, EMR, TOS); C Italian peninsula (MAR, UMB, LAZ, ABR, MOL); S Italian peninsula (PUG, CAM, BAS, CAL)
- Scabiosa vestina* Facchini ex W.D.J.Koch
NE Italy (LOM, TAA)

Apiales

Apiaceae

- Astrantia pauciflora* Bertol. subsp. *pauciflora*
N Italian peninsula (TOS)
- Astrantia pauciflora* Bertol. subsp. *tenorei* (Mariotti) Bechi & Garbari
C Italian peninsula (MAR not confirmed, LAZ, ABR, MOL)
- Athamanta cortiana* Ferrarini
N Italian peninsula (TOS)
- Bunium corydalinum* DC.
SAR (Corsica)
- Bunium petraeum* Ten.
C Italian peninsula (LAZ doubtful, ABR, MOL); S Italian peninsula (CAM, BAS doubtful, CAL)

- Bupleurum dianthifolium* Guss.
SIC
- Bupleurum elatum* Guss.
SIC
- Bupleurum falcatum* L. subsp. *corsicum* (Coss. & Kralik) Rouy & E.G.Camus
SAR (Corsica)
- Bupleurum gussonei* (Arcang.) Snogerup & B.Snogerup
N Italian peninsula (TOS); C Italian peninsula (ABR doubtful); S Italian peninsula (PUG not confirmed, CAL)
- Bupleurum rollii* (Montel.) Moraldo
C Italian peninsula (LAZ, ABR, MOL); S Italian peninsula (PUG, BAS, CAL); SIC
- Carum appuanum* (Viv.) Grande subsp. *appuanum*
N Italian peninsula (TOS)
- Chaerophyllum magellense* Ten.
N Italian peninsula (LIG, EMR, TOS); C Italian peninsula (UMB doubtful, LAZ, ABR); S Italian peninsula (CAM, BAS, CAL)
- Coristospermum cuneifolium* (Guss.) Bertol.
C Italian peninsula (LAZ, ABR, MOL)
- Cryptotaenia thomasi* (Ten.) DC.
S Italian peninsula (BAS, CAL). Note: this genus is made by only three species with peculiar allopatric intercontinental distribution (Spalik & Downie 2007).
- Daucus carota* L. subsp. *rupestris* (Guss.) Heywood
SIC
- Daucus nebrodensis* Strobl
SIC
- Eryngium crinitum* C.Presl
SIC
- Eryngium siculum* Lojac.
SIC
- Ferula arrigonii* Bocchieri
SAR
- Ferulago nodosa* (L.) Boiss. subsp. *rigida* (Ten.) Troia & Raimondo
SIC
- Heptaptera angustifolia* (Bertol.) Tutin
S Italian peninsula (PUG doubtful, BAS, CAL)
- Laserpitium nitidum* Zanted.
NE Italy (LOM, TAA)
- Laserpitium siler* L. subsp. *siculum* (Spreng.) Santangelo, F.Conti & Gubellini
N Italian peninsula (TOS); C Italian peninsula (MAR, UMB, LAZ, ABR, MOL); S Italian peninsula (CAM, BAS, CAL); SIC
- Oenanthe lisaе* Moris
SAR
- Pastinaca kochii* Duby
SAR (Corsica)
- Petagnaea gussonei* (Spreng.) Rausch.
SIC. The monotypic genus *Petagnaea* is endemic to Sicily (see also De Castro *et al.* 2013).
- Pimpinella anisoides* V.Brig.
C Italian peninsula (LAZ); S Italian peninsula (CAM, BAS, CAL); SIC

- Pimpinella gussonei* (C.Presl) Bertol.
SIC
- Ptychotis sardoa* Pignatti & Metlesics
SAR
- Seseli bocconi* Guss.
SIC
- Seseli polyphyllum* Ten.
C Italian peninsula (LAZ); S Italian peninsula (CAM)
- Seseli praecox* (Gamisans) Gamisans
SAR (Corsica)
- Seseli tortuosum* L. subsp. *maritimum* (Guss.) C.Brullo, Brullo, Giusso & Sciandrello
S Italian peninsula (PUG doubtful, CAL); SIC; SAR
- Siculosciadium nebrodense* (Guss.) C.Brullo, Brullo, S.R.Downie & Giusso
SIC. The monotypic genus *Siculosciadium* is endemic to Sicily (see also Brullo *et al.* 2013).
- Thapsia garganica* L. subsp. *messanensis* (Guss.) Brullo, Guglielmo, Pasta, Pavone & Salmeri
SIC
- Thapsia pelagica* Brullo, Guglielmo, Pasta, Pavone & Salmeri
SIC
- Torilis nemoralis* (Brullo) Brullo & Giusso
SIC; SAR
- Visnaga crinita* (Guss.) Giardina & Raimondo
S Italian peninsula (CAL doubtful); SIC

Acknowledgements

We gratefully acknowledge the regional and/or taxonomical advisors who provided data for the forthcoming new checklist of the Italian vascular flora: Filippo Prosser and Thomas Wilhalm (Trentino-Alto Adige), Silvio Scortegagna and Rizzieri Masin (Veneto), Simonetta Peccenini and Giuseppina Barberis (Liguria), Alessandro Alessandrini (Emilia-Romagna), Annalisa Santangelo (Campania), Robert Philip Wagensommer, Pietro Medagli and Antonella Albano (Puglia), Giannantonio Domina and Francesco Maria Raimondo (Sicily), Gianluigi Bacchetta (Sardinia), Günther Gottschlich (*Hieracium*, *Pilosella*). Finally, kind thanks are due Gabriele Galasso for nomenclatural advices and to Giovanni Gestri and Brunello Pierini, for the pictures of *Aquilegia dumeticola* and *Scabiosa unisetata*.

References

- Abbate, G., Iberite, M., Bonacquisti, S., Giovi, E., Iamónico, D. & Scassellati, E. (2012) Taxonomical and chorological diversity of native woody flora of Italy at regional scale. *Boccone* 24: 169–175.
- Aedo, C., Medina, L. & Fernández-Albert, M. (2013) Species richness and endemism in the Spanish vascular flora. *Nordic Journal of Botany* 31: 478–488.
- Aeschimann, D., Rasolofon, N. & Theurillat, J.-P. (2011) Analysis of the flora of the Alps. 1: historical account and biodiversity. *Candollea* 66: 27–55.
- APGIII (2009) An update of the Angiosperm Phylogeny Group classification for the orders and families of flowering plants: APG III. *Botanical Journal of the Linnean Society* 161: 105–121.
- Bacchetta, G., Brullo, S., Congiu, A., Fenu, G., Garrido, J.L. & Mattana E. (2012a) A new species of *Aquilegia* (Ranunculaceae) from Sardinia (Italy). *Phytotaxa* 56: 59–64.
- Bacchetta, G., Brullo, S., D'Emerico, S., Pontecorvo, C. & Salmeri C. (2012b) *Charybdis glaucophylla* (Asparagaceae), a new species from Sardinia. *Phytotaxa* 69: 16–26.
- Bacchetta, G., Farris, E. & Pontecorvo, C. (2012c) A new method to set conservation priorities in biodiversity hotspots. *Plant Biosystems* 69: 638–648.

- Bacchetta, G., Fenu, G. & Mattana, E. (2012d) A checklist of the exclusive vascular flora of Sardinia with priority rankings for conservation. *Anales del Jardín Botánico de Madrid* 69: 81–89.
- Bacchetta, G. & Pontecorvo, C. (2005) Contribution to the knowledge of the endemic vascular flora of Igesiente (South West Sardinia, Italy). *Candollea* 60: 481–501.
- Bedini, G., Garbari, F. & Peruzzi, L. (2012) Chromosome number variation of the Italian endemic vascular flora. State-of-the-art, gaps in knowledge and evidence for an exponential relationship among even ploidy levels. *Comparative Cytogenetics* 6: 192–211.
<http://dx.doi.org/10.3897/compcytogen.v6i2.3107>
- Bernardo, L., Passalacqua, N.G. & Peruzzi L. (2010) Notulae alla checklist della flora italiana, 10: 1736–1748. *Informatore Botanico Italiano* 42: 529–532.
- Biondi, M. (2006) Il calcolo della somiglianza con dati binari nelle analisi biogeografiche. *Biogeographia n.s.* 27: 227–254.
- Blasi, C., Filibeck, G., Burrascano, S., Copiz, R., Di Pietro, R., Ercole, S., Lattanzi, E., Rosati, L. & Tilia, A. (2007) Primi risultati per una nuova regionalizzazione fitogeografica del territorio italiano. *Biogeographia s.n.* 28: 9–23.
- Bonanno, G. (2013) Adaptive management as a tool to improve the conservation of endemic floras: the case of Sicily, Malta and their satellite islands. *Biodiversity and Conservation* 22: 1317–1354.
- Brullo, C., Brullo, S., Downie, S.R., Danderson, C.A. & Giusso del Galdo, G. (2013c) *Siculosciadium*, a new monotypic genus of Apiaceae from Sicily. *Annals of Missouri Botanical Garden* 99: 1–18.
<http://dx.doi.org/10.3417/2011009>
- Brullo, C., Brullo, S., Giusso del Galdo, G. & Ilardi V. (2013a) *Brassica trichocarpa* (Brassicaceae), a new species from Sicily. *Phytotaxa* 122: 45–60.
- Brullo, C., Brullo, S. & Giusso del Galdo, G. (2013b) *Solenopsis mothiana* (Campanulaceae), a new species from Sicily. *Phytotaxa* 145: 15–26.
<http://dx.doi.org/10.11646/phytotaxa.145.1.2>
- Brullo, C., Minissale, P., Sciandrello, S. & Spampinato G. (2011) Phytogeographic survey on the endemic vascular flora of the Hyblaean territory (SE Sicily, Italy). *Acta Botanica Gallica* 158: 617–631.
<http://dx.doi.org/10.1080/12538078.2011.10516299>
- Cacciato, A. 1966. Il genere *Amaranthus* a Roma e nel Lazio. *Annali di Botanica (Roma)* 28: 613–630.
- Candolle de, A.P. (1838) *Prodromus Systematis Naturali Regni Vegetabilis* 6. Treuttel & Würtz, Paris, 687 pp.
- Caruel, T. (1894) *Epitome Florae Europae Terrarumque Affinium* 2. T. Caruel, Firenze, pp. 113–288.
- Chase, M.W. & Reveal J.L. (2009) A phylogenetic classification of the land plants to accompany APG III. *Botanical Journal of the Linnean Society* 161: 122–127.
- Chaw, S.-M., Parkinson, C.L., Cheng, Y., Vincent, T.M. & Palmer, J.D. (2000) Seed plant phylogeny inferred from all three plant genomes: monophyly of extant gymnosperms and origin of Gnetales from conifers. *Proceedings of National Academy of Sciences, USA* 97: 4086–4091.
<http://dx.doi.org/10.1073/pnas.97.8.4086>
- Chiovenda, E. (1892) Sopra alcune piante rare o critiche della flora romana. *Bullettino della Società Botanica Italiana* 1892: 295–303.
- Christenhusz, M.J.M., Reveal, J.L., Farjon, A., Gardner, M.F., Mill, R.R. & Chase, M.W. (2011a) A new classification and linear sequence of extant gymnosperms. *Phytotaxa* 19: 55–70.
- Christenhusz, M.J.M., Zhang, X.-C. & Schneider, H. (2011b) A linear sequence of extant families and genera of lycophytes and ferns. *Phytotaxa* 19: 7–54.
- Colla, L.A. (1830) *Hortus Ripulensis, Appendice 4* [reprint]. Regio Typographaeo, Torino, 50 pp.
- Conti, F., Abbate, G., Alessandrini, A. & Blasi, C. (eds.) (2005) *An annotated checklist of the Italian vascular flora*. Palombi Editori, Roma, 428 pp.
- Conti, F., Alessandrini, A., Bacchetta, G., Banfi, E., Barberis, G., Bartolucci, F., Bernardo, L., Bonaquisti, S., Bouvet, D., Bovio, M., Brusa, G., Del Guacchio, E., Foggi, B., Frattini, S., Galasso, G., Gallo, L., Gangale, C., Gottschlich, G., Grunanger, P., Gubellini, L., Iiriti, G., Lucarini, D., Marchetti, D., Moraldo, B., Peruzzi, L., Poldini, L., Prosser, F., Raffaelli, M., Santangelo, A., Scassellati, E., Scortegagna, S., Selvi, F., Soldano, A., Tinti, D., Ubaldi, D., Uzunov, D. & Vidali, M. (2007) Integrazioni alla Checklist della flora vascolare italiana. *Natura Vicentina* 10 (2006) 5–74.
- De Castro, O., Sepe, F., Di Maio, A., Cennamo, P., De Luca, P., Gianguzzi, L. & Menale B. (2013) Genetic structure in the palaeoendemic and endangered *Petagna gussonei* (Spreng.) Rauschert (Saniculoideae, Apiaceae) and implications for its conservation. *Plant Systematics and Evolution* 299: 209–223.
<http://dx.doi.org/10.1007/s00606-012-0716-3>
- Domina, G., Giusso Del Galdo, G., Gargano, D., Labra, M., Peccenini, S., Peruzzi, L. & Raimondo F.M. (2012a) The Italian Loci Classici Census. *Taxon* 61: 1351–1353.
- Domina, G., Marino, P., Spadaro, V. & Raimondo, F.M. (2012b) Vascular flora evolution in the major Mediterranean islands. *Biodiversity Journal* 3: 337–342.
- Ernandes, P., Beccarisi, L. & Zuccarello, V. (2010) A new species of *Isoëtes* (Isoëtaceae, Pteridophyta) for the Mediterranean. *Plant Biosystems* 144: 805–813.
- Ernandes, P. & Marchiori, S. (2012) A comparative study of two endemic *Isoëtes* species from South Italy. *ISRN Botany*, Article ID 127250, 7 pages.

- <http://dx.doi.org/10.5402/2012/127250>.
- Euro+Med (2006 onwards) Euro+Med Plantbase - the information resource for Euro-Mediterranean plant diversity. Available at: <http://ww2.bgbm.org/EuroPlusMed/> (accessed 15 March 2013).
- Fenaroli, F., Pistarino, A., Peruzzi, L. & Cellinese, N. (2013) *Campanula martinii* (Campanulaceae), a new species from northern Italy. *Phytotaxa* 111: 27–38.
<http://dx.doi.org/10.11646/phytotaxa.111.1.2>
- Fenu, G., Mattana, E., Congiu, A. & Bacchetta, G. (2010) The endemic vascular flora of Supramontes (Sardinia), a priority plant conservation area. *Candollea* 65: 347–358.
- Ferreira, P.M.A. & Boldrini, I.I. (2011) Potential reflection on distinct ecological units in plant endemism categories. *Conservation Biology* 25: 672–679.
<http://dx.doi.org/10.1111/j.1523-1739.2011.01675.x>
- Fiori, A. & Béguinot, A. (1910) Flora Italica Exsiccata. *Nuovo Giornale Botanico Italiano, nuova serie* 17: 565–666.
- Fiori, A. & Paoletti, G. (1898) *Flora Analitica d'Italia* 1(2). Tipografia del Seminario, Padova, pp. 257–607.
- Galbany-Casals, M., Saez, L. & Benedi, C. (2004) Taxonomy of *Castroviejoa*, a new genus of Gnaphalieae (Asteraceae), endemic to the Mediterranean Islands Corsica and Sardinia. *Australian Systematic Botany* 17: 581–591.
- Gallo, L. (2012) *Sempervivum × luisae* (Crassulaceae) Hybr. Nov., endemico dell'Italia centrale. *Annali del Museo Civico di Rovereto, Sezione Archeologia, Storia, Scienze Naturali* 27 (2011): 287–296.
- Garbari, F. (1990) L'endemismo vegetale: genesi, tipi e significato biogeografico. *Studi Trentini di Scienze Naturali* 66 (1989): 113–120.
- Gussone G. (1844) *Florae siculae synopsis exhibens plantas vasculares in Sicilia insulisque adjacentibus huc usque detectas secundum systema linneanum depositas* 2(2). Tramatè, Napoli. pp. 527–920.
<http://dx.doi.org/10.5962/bhl.title.50455>
- Haston, E., Richardson, J.E., Stevens, P.E., Chase, M.W. & Harris, D.J. (2009) The Linear Angiosperm Phylogeny Group (LAPG) III: a linear sequence of the families in APG III. *Botanical Journal of the Linnean Society* 161: 128–131.
- Hinz, P.A. (1989) L'endémisme: I. Concepts généraux. *Saussurea* 20: 145–168.
- Iamonico, D. (2012a) *Amaranthus powellii* subsp. *cacciatoi* comb. et stat. nov. (Amaranthaceae). *Nordic Journal of Botany* 30: 12–16.
<http://dx.doi.org/10.1111/j.1756-1051.2011.01080.x>
- Iamonico D. (2012b) Studies on the genus *Atriplex* L. (Amaranthaceae) in Italy. II. Lectotypification of *Atriplex elongata* Guss. (Amaranthaceae). *Candollea* 67: 181–185.
- Iamonico, D. (2013a) *Amaranthus cacciatoi* (Aellen ex Cacciato) Iamonico, comb. & stat. nov. In: von Raab-Straube, E. & Raus, T., Euro+Med Checklist Notulae, 2. *Willdenowia* 43: 239–249.
- Iamonico, D. (2013b) Taxonomical and chorological study on the Central Mediterranean Basin endemic *Arenaria bertolonii* Fiori & Paol. (Caryophyllaceae). *Plant Biosystems* 147: 923–930.
- Iamonico, D., Forbicioni, L. & Frangini G. (2011) A new hybrid in the genus *Ophrys* L. (Orchidaceae) from Elba Island (Central Italy). *Annales Botanici Fennici* 48: 435–438.
<http://dx.doi.org/10.5735/085.048.0508>
- Iamonico, D. & Kadereit, G. (2012) Typification of the Name *Kochia saxicola* (Chenopodiaceae). *Novon* 22: 418–421.
- IPNI, 2013. *The International Plant Names Index*. Available at: <http://www.ipni.org> (accessed 15 March 2013).
- Jordan, C.T.A. (1861) Diagnoses d'espèces nouvelles. *Annales de la Société Linnéenne de Lyon*, ser. 2, 7: 373–518.
- Kadereit, G. & Freitag, H. (2011) Molecular phylogeny of Camphorosmeae (Camphorosmoideae, Chenopodiaceae): implications for biogeography, evolution of C₄-photosynthesis and taxonomy. *Taxon* 60: 51–78.
- Linnaeus, C. (1753) *Species Plantarum*. L. Salvius, Stockholm, 1200 pp.
- Linnaeus, C. (1763) *Species Plantarum ed. 2*, 2. L.Salvius, Stockholm, pp. 785–1684.
- Melai, M., Marchetti, D., Bernardello, R. & Peruzzi L. (2012) A new diploid species of *Leucanthemum* (Asteraceae, Anthemideae) from Liguria (northwestern Italy). *Phytotaxa* 66: 27–37.
- Miller, P. (1754) *The Gardener's Dictionary ed. 4*. John and James Rivington, London, 1582 pp.
- Minissale, P., Brullo, C., Brullo, S., Giusso del Galdo, G. & Sciandrello, S. (2013) *Bituminaria basaltica* (Fabaceae), a new species from Italy. *Phytotaxa* 98: 1–15.
<http://dx.doi.org/10.11646/phytotaxa.98.1.1>
- Myers, N., Mittermeier, R.A., Mittermeier, C.G., da Fonseca G.A.B. & Kent, J. 2000. Biodiversity hotspots for conservation priorities. *Nature* 403: 853–858.
- Özhatay, N., Koçyiğit, M., Yüzbaşıoğlu, S. & Gürdal, B. (2013) Mediterranean flora and its conservation in Turkey: with special reference to Monocot geophytes. *Flora Mediterranea* 23: 195–208.
- Peruzzi, L., Bedini, G. & Andreucci, A. (2012) Homoploid hybrid speciation in *Doronicum* L. (Asteraceae)? Morphological, karyological and molecular evidences. *Plant Biosystems* 146: 867–877.
- Peruzzi, L. & Caparelli, K.F. (2007) *Gagea peduncularis* (J.Presl & C.Presl) Pascher (Liliaceae) new for the Italian flora. *Webbia* 62: 261–268.
<http://dx.doi.org/10.1080/00837792.2007.10670827>
- Peruzzi, L. & Bernard L. (2011) Notulae alla Checklist della flora vascolare italiana, 12: 1855. *Informatore Botanico Italiano* 43: 364.

- Peruzzi, L., Carta, A. & Bedini G. (2012) La flora vascolare endemica di Toscana ed aree contermini: stato delle conoscenze floristiche, biosistematiche, ecologiche e conservazionistiche. *Codice Armonico 2012*: 138–147.
- Petrova, A. & Vladimirov, V. (2010) Balkan endemics in the Bulgarian flora. *Phytologia Balcanica* 16: 293–311.
- Pignatti, S. (1983) Note sulla flora critica d'Italia. VII. Supplemento. *Giornale Botanico Italiano* 116 (1982): 93–95.
- Pryer, K.M., Schneider, H., Smith, A.R., Cranfill, R., Wolf, P.G., Hunt, J.S. & Sipes, S.D. (2001) Horsetails and ferns are a monophyletic group and the closest living relatives to seed plants. *Nature* 409: 618–622.
- Puppi, G., Cristofolini, G. (1996) Systematics of the complex *Pulmonaria saccharata* – *P. vallarsae* and related species (Boraginaceae). *Webbia* 51: 1–20.
- Rankou, H., Culham, A., Jury, S.L. & Christenhusz M.J.M. (2013) The endemic flora of Morocco. *Phytotaxa* 78: 1–69.
<http://dx.doi.org/10.11646/phytotaxa.78.1.1>
- Reveal, J.L. & Chase, M.W. (2011) APG III: Bibliographical Information and Synonymy of Magnoliidae. *Phytotaxa* 19: 71–134.
- Romolini, R. & Souche, R. (2012) *Ophrys d'Italia*. Société Occitane d'Orchidologie, Saint-Martin-de-Londres, 576 pp.
- Rossi, G., Montagnani, C., Abeli, T., Gargano, D., Peruzzi, L., Fenu, G., Magrini, S., Gennai, M., Foggi, B., Wagensommer, R.P., Ravera, S., Cogoni, A., Aleffi, M., Alessandrini, A., Bacchetta, G., Bagella, S., Bartolucci, F., Bedini, G., Bernardo, L., Bovio, M., Castello, M., Conti, F., Domina, G., Farris, E., Gentili, R., Gigante, D., Peccenini, S., Persiani, A.M., Poggio, L., Prosser, F., Santangelo, A., Selvaggi, A., Villani, M.C., Wilhalm, T., Zappa, E., Zotti, M., Tartaglioni, N., Ardenghi, N.M.G., Blasi, C., Raimondo, F.M., Venturella, G., Cogoni, D., Puglisi, M., Campisi, P., Miserere, L., Perrino, E.V., Strumia, S., Iberite, M., Lucchese, F., Fabrini, G. & Orsenigo S. (2013) Are red lists really useful for plant conservation? The new red list of the Italian flora in the perspective of national conservation policies. *Plant Biosystems* 148: 187–190.
<http://dx.doi.org/10.1080/11263504.2013.868375>.
- Savi, G. (1798) *Flora Pisana* 1. P. Giacomelli, Pisa, 485 pp.
- Schatz, B., Gauthier, P., Debussche, M. & Thompson, J.D. (2013) A decision tool for listing species for protection on different geographic scales and administrative levels. *Journal for Nature Conservation*.
<http://dx.doi.org/10.1016/j.jnc.2013.09.003>.
- Schultz, K.H. (1845) Hypochoerideae. *Novorum Actorum Academiae Caesareae Leopoldinae-Carolinae Naturae Curiosorum* 21: 85–172.
- Siljak-Yakovlev, S. & Peruzzi, L. (2012) Cytogenetic characterization of the endemics: past and future. *Plant Biosystems* 146: 694–702.
- Smith, A.R., Pryer, K.M., Schuettpelz, E., Korall, P., Schneider, H. & Wolf, P.G. (2006) A classification for extant ferns. *Taxon* 55: 705–731.
<http://dx.doi.org/10.2307/25065646>
- Spalik, K. & Downie, S.R. (2007) Intercontinental disjunctions in *Cryptotaenia* (Apiaceae, Oenantheae): an appraisal using molecular data. *Journal of Biogeography* 34: 2039–2054.
<http://dx.doi.org/10.1111/j.1365-2699.2007.01752.x>
- Stevens, P.F. (2008 onwards) *Angiosperm Phylogeny Website. Version 9, June 2008 [and more or less continuously updated since]*. Available at: <http://www.mobot.org/MOBOT/research/APweb/>. (accessed 15 March 2013).
- Tausch, J.C. (1836) Ueber zwei bisher unbeschriebene, schon längst aufgefundenene deutsche Alpenpflanzen. *Flora* 19: 33–37.
- The Plant List (2010) *Version 1*. Royal Botanic Gardens Kew. Available at: <http://www.theplantlist.org/> (accessed 15 March 2013).
- Trigas, P., Tsfitsis, S., Tsiripidis, I. & Iatrou, G. (2012) Distribution patterns and conservation perspectives of the endemic flora of Peloponnese (Greece). *Folia Geobotanica* 47: 421–439.
- Troia, A. & Greuter, W. (2014) A critical conspectus of Italian *Isoetes* (Isoetaceae). *Plant Biosystems* 148: 13–20.
<http://dx.doi.org/10.1080/11263504.2013.878409>.
- Troia, A. & Raimondo, F.M. (2009) *Isoetes todaroana* (Isoëtaceae, Lycopodiophyta), a new species from Sicily (Italy). *American Fern Journal* 99: 238–243.
<http://dx.doi.org/10.1640/0002-8444-99.4.238>
- Ungricht, S. (2004) How many plant species are there? And how many are threatened with extinction? Endemic species in global biodiversity and conservation assessments. *Taxon* 53: 481–484.
- Wagensommer, R.P., Frölich, T. & Frölich, M. (2014) First record of the southeast European species *Cerintho retorta* Sibth. & Sm. (Boraginaceae) in Italy and considerations on its distribution and conservation status. *Acta Botanica Gallica*
<http://dx.doi.org/10.1080/12538078.2014.892438>