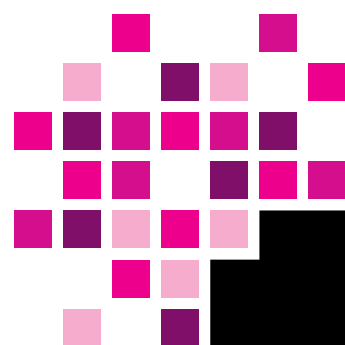




KONICA MINOLTA

bizhub PRESS C7000/C6000 Professional

Extraordinary imaging for enhanced
colour production



bizhub PRESS 



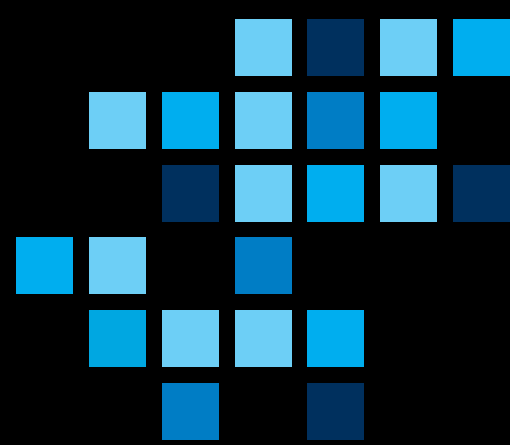
Colour production power **through and through**

Central reprographic departments and print providers will welcome the Konica Minolta bizhub PRESS C7000/C6000 Professional that combine high-speed colour printing with an extensive range of inline finishing options. With amazing imaging capabilities and consistent print quality, the bizhub PRESS C7000/C6000 Professional open up a new era of superb quality colour production. Inimitable modularity provides unmatched versatility and ensures perfect adaptability to the entry production environment.

The bizhub PRESS series features ground-breaking 8-bit colour depth that prints smooth gradients without a visible moiré pattern. It guarantees close-to-offset results that are brighter and more consistent than previously achieved with digital printing presses. Their highly versatile media handling, professional finishing versatility and consistent simplified workflow integration increase overall productivity and create ample opportunities for new business.

In the PRESS series, the bizhub PRESS C7000/C6000 Professional invite professionals to “Expect Impact” – and they deliver! Konica Minolta’s colour professionals incorporate the latest imaging technology promising finer colour, enhanced print quality and swifter production speed. In addition to their advanced finishing capabilities, the robust design and impressive media flexibility distinguish the bizhub PRESS C7000/C6000 Professional from any other product in their class!





Dedicated to customer needs

- The bizhub PRESS C7000/C6000 Professional are highly reliable, flexible and productive with a fast print speed of 71 (bizhub PRESS C7000) and 60 (bizhub PRESS C6000) colour impressions per minute.
- Varied customer needs are easily met with the four controllers supported by the bizhub PRESS C7000/C6000 Professional. These are the IC-307 Creo controller, the EFI Fiery IC-306, the embedded Konica Minolta controller IC-601 and the IC-413 embedded EFI controller.
- Featuring proven, advanced Konica Minolta precision print technology in their hardware and versatile software, the bizhub PRESS C7000/C6000 Professional deliver outstanding quality. In addition, proprietary Konica Minolta developments like Simitri® HD and S.E.A.D. II satisfy even the most discerning customer's quality expectations.
- With impressive media flexibility, the bizhub PRESS C7000/C6000 Professional meet virtually any print job request, including paper formats from A5 to SRA3 (max 330 x 487 mm) and weights ranging from 64 to 300 gsm.
- Commercial printers will benefit from the bizhub PRESS C7000/C6000 Professional which offer auto-duplex printing on paper stocks up to 300 gsm.
- Advanced finishing facilities provide essential impact to boost customers' business opportunities. With an extensive range of finishing options including booklet trimming and perfect binding, the finishing capabilities of the bizhub PRESS C7000/C6000 Professional is truly comprehensive and highly professional.
- Integrating seamlessly with the bizhub PRESS C7000/C6000 Professional, Printgroove POD further enhances production capabilities and increases the overall effectiveness of the production facility. The software suite optimises workflows and streamlines production processes, enabling configuration of individual workflows.

Environmentally committed

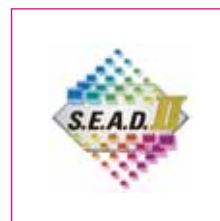
- With all-round capabilities, the bizhub PRESS C7000/C6000 Professional stand for colour production printing at its best and boasts features that reduce the impact on the environment.
- Konica Minolta's proprietary polymerised toner, Simitri® HD, uses biomass as one of its components. This makes it CO₂-neutral during recycling. At the same time the polymerisation process generates around 40% less CO₂ than conventional toner production. In addition, Simitri® HD enables fusing at lower temperatures, reducing energy consumption and further reducing related CO₂ emissions.
 - Konica Minolta promotes sustainable development and integrates environmental and social perspectives into its business strategies.
 - As part of its zero-waste manufacturing concept, Konica Minolta strives to minimise the ecological impact of its products with efficient environmental activities throughout all stages of the product lifecycle. One aspect of this is reusable or recyclable packaging materials for hardware and consumables to minimise the waste generated by each device.



Colour processing technologies



The bizhub PRESS C7000/C6000 Professional feature the latest in Konica Minolta's very own advanced colour processing technology. Innovations like S.E.A.D. II, ITbit technology, CRS, Simitri® HD polymerised toner and Konica Minolta's 'air-assist' paper feeding technology provide an unbeatable combination of outstanding quality and smooth processing, ensuring perfect results and the highest reliability.



S.E.A.D. II

Developed by Konica Minolta, S.E.A.D. stands for Screen-Enhancing Active Digital Process and combines an array of technical innovations to guarantee truly exceptional colour reproduction at top speed.

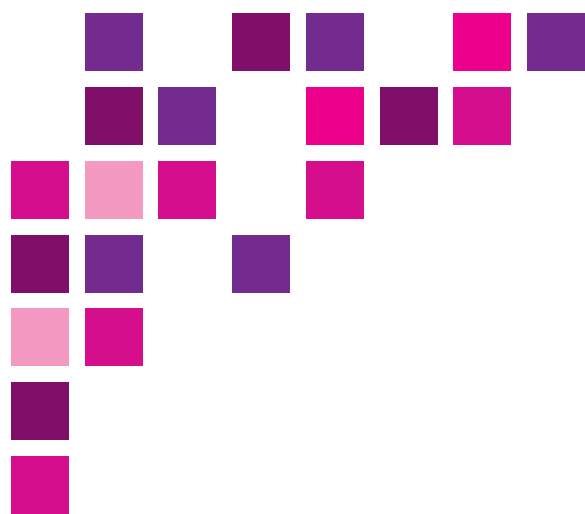
S.E.A.D. II represents the second generation of Konica Minolta's advanced colour processing technology and includes these important capabilities:

- **1,200 x 1,200 dpi x 8-bit print resolution**

The impressive print resolution on the bizhub PRESS C7000/C6000 Professional reproduce finest characters and thinnest lines to perfection. In combination with proprietary Simitri® HD toner, this results in high resolution printing with close-to-offset quality.

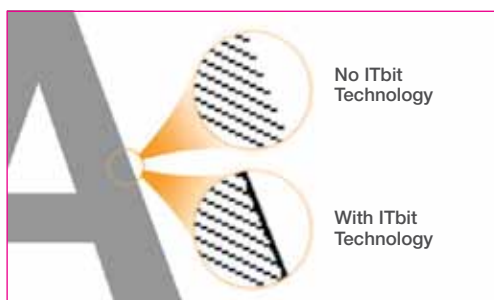
- **FM screen technology**

With the excellent resolution of 1,200 dpi, the bizhub PRESS C7000/C6000 Professional provide additional screens for higher quality prints, enabling smoother and more realistic image reproductions that perfectly match print data. The Frequency Modulated (FM) screen technology ensures smooth and jagged-free images.



- **ITbit technology**

Outline processing improves the appearance of characters by thinning them so they do not appear fat. Contour processing helps to reproduce white characters on backgrounds with ideal proportions and reduces jagged edges of half-tone characters.



- **Image stability**

Innovative short interval stability control monitors image consistency on the bizhub PRESS C7000/C6000 Professional during continuous printing. Corrections are fully automatic and improve the stability of the image quality, while the whole process considerably enhances production efficiency.

- **Automated colour management tools promise increased productivity**

The bizhub PRESS C7000/C6000 Professional streamline workflows with completely hands-free calibration. This allows operators to focus on producing more outstanding quality jobs in less time.

- **Colour Retention and Stability (CRS)**

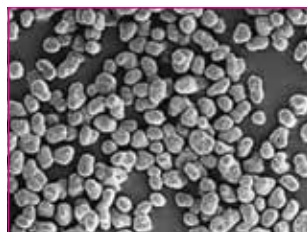
The exclusive CRS technology constantly monitors the status of the bizhub PRESS C7000/C6000 Professional. Receiving continuous feedback about changes in the print environment and the engine, CRS immediately makes the necessary adjustments to always maintain high quality printing.



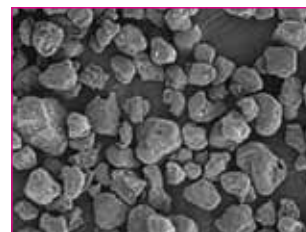
Simitri® HD

The bizhub PRESS C7000/C6000 Professional deliver a superior colour image quality as well as impressive black density with unique Simitri® HD polymerised toner. Simitri® HD also ensures an unparalleled colour

image stability and with its reduced fusing temperature supports a truly impressive range of media, virtually eliminating paper curling.



Simitri® HD polymerised toner



Conventional toner

Ultra-smooth paper processing

The bizhub PRESS C7000/C6000 Professional feature fast and ultra smooth paper processing. Where required, an optional heating unit inside the paper magazine dries paper stock before printing. Konica Minolta's 'air-assist' paper feeding technology separates sheets and feeds them individually – a process that double-feed detection sensors make even more reliable! Thanks to an innovative printing and developing process, fusing temperatures are low, resulting in a considerable increase in media flexibility. Each individual print is cooled and de-curved before output giving optimum results. This performance can be further enhanced with a unique optional humidification decurler that elevates the moisture content in the paper and eliminates curling and electrostatic cling.

High availability

Konica Minolta's remote diagnostics system CS Remote Care means pro-active support for each bizhub PRESS C7000/C6000 Professional in the field. With constant analysis of the system performance, CS Remote Care enables automated reporting and preventive maintenance, effectively assuring maximum system uptime.

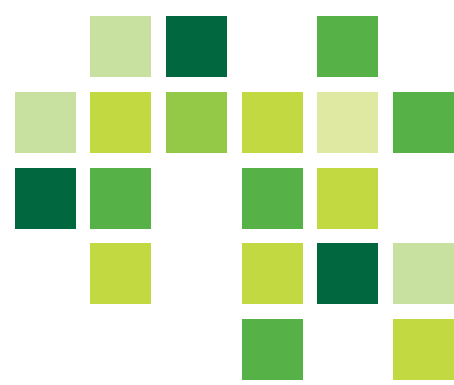
In addition, operators can avoid longer production interruptions with self-maintenance. Qualified training and support is available with ORU-M, Konica Minolta's Operator Replaceable Unit Management program.

True production **capabilities**



Whatever the configuration, the bizhub PRESS C7000/C6000 Professional combine impressive colour speed and superb quality output with durability, reliability and a streamlined, integrated design. Each system represents an economically viable solution customised for printing environments that want to offer customers the full scope of competitively priced, diverse printing choices.

- By offering reasonable and sustainable running costs the bizhub PRESS C7000/C6000 Professional significantly help professional printers to ensure competitiveness and achieve attractive margins. Konica Minolta's progressive digital production printing presses deliver the productivity gains and economic potential that are so essential for professional printing environments.
- The bizhub PRESS C7000/C6000 Professional are available in several different system configurations, all providing the same robust colour printing and comprehensive performance, while tailored to the flexible needs of individual professional user groups. All product versions are available as multifunction devices with scanning and copying functionality, and alternatively as pure printers for environments that concentrate exclusively on print production.
- These digital printing presses are ideal for heavy-duty production and ensure short turnaround times can be met. With their output capacity of up to 71 (bizhub PRESS C7000 Professional) and 60 (bizhub PRESS C6000 Professional) A4 impressions per minute in both full colour and b/w as well as the paper and toner refill on-the-fly functionality, the presses are capable of handling extensive output volumes.



- The bizhub PRESS C7000/C6000 Professional impress with sophisticated paper processing capabilities. The digital presses process a wide range of substrates, including media weights of up to 300 gsm – whether coated paper, card or digital offset stock.
- To satisfy the diverse requirements of the most varied professional printing environments, the bizhub PRESS C7000/C6000 Professional can be equipped with four different controllers that all guarantee fast and smooth processing of colour jobs:
 - The external EFI controller IC-306 is a viable all-round layer that supports the impressive system functionality with latest Fiere technology and provides an intuitive, user-friendly interface between operator and digital press.
 - The external CREO controller IC-307 is the perfect solution for VDP applications (Creo VPS) and an ideal choice for hybrid prepress workflows. Proprietary Creo Colour Server technology supports the bizhub PRESS C7000/C6000 Professional as robust workflow solutions with outstanding print quality and exceptional productivity.
 - The embedded Konica Minolta controller IC-601 offers affordable colour management as well as seamless integration with a wide range of Konica Minolta applications. The highlight of the IC-601 is its complete implementation into the bizhub PRESS C7000/C6000 Professional with full panel integration of the controller operation.
- The embedded EFI controller IC-413 offers simple, affordable colour management and streamlined processing of print files to enhance the productivity of novice users and creative professionals. With its generous range of standard-setting colour tools, Fiere ColorWise delivers excellent colour that is consistent across applications, computer platforms, colour spaces and colour file formats.
- One precondition for success in the production printing sector is highest precision. The bizhub PRESS C7000/C6000 Professional meet this challenge with a back-to-front and page-to-page registration that comes very close to offset printing results.
- Ease of use is another attractive asset of the bizhub PRESS C7000/C6000 Professional. Convenience, fast and easy handling and no-nonsense operation were among the top development priorities for Konica Minolta's colour production systems. This is reflected with the large full-colour operator panel for clear and easy access to all functions.

Unparalleled finishing choices

Professional finishing of the printed product is an integral part of any production run – however, flexibility is the key.

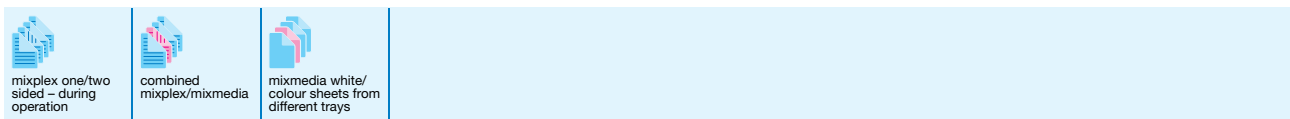
bizhub PRESS C7000/C6000 Professional (main unit)

The bizhub PRESS C7000/C6000 Professional boasts a number of professional features that ensure the production of sophisticated document formats. Mixplex for example allows combining single- and double-sided pages within one document. Mixmedia lets the user specify individual paper types from various trays on page-level. The combined mixmedia and mixplex function fully automates the production of complex single- and double-sided documents on different media.



Paper feed unit (LU-202)

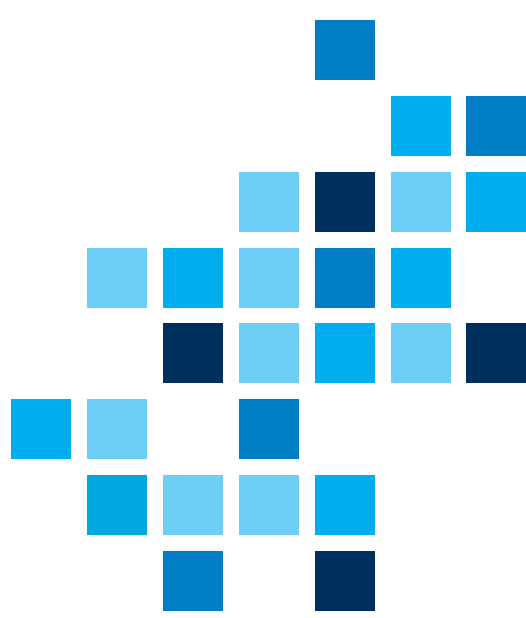
Equipped with the large capacity cassette LU-202 the bizhub PRESS C7000/C6000 Professional can be loaded with up to 4,250 sheets of paper. The air-assist paper feeding together with the optional dehumidifier further enhance the media flexibility of the bizhub PRESS C7000/6000 Professional.



Relay unit (RU-509)

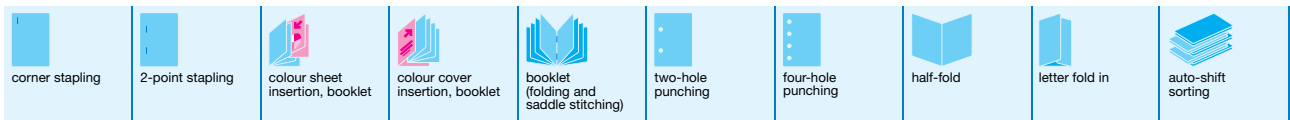
The relay unit RU-509 cools down the prints for immediate finishing and is equipped with a zigzag decurler for smooth and straight prints. Performance can be enhanced by adding the optional humidification decurler.





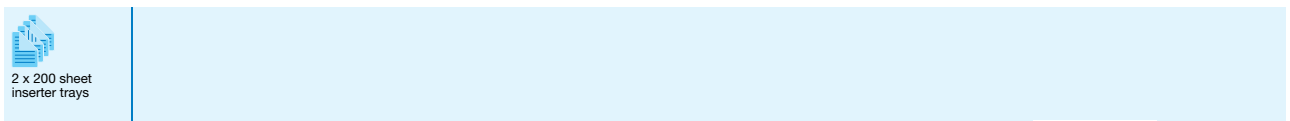
Booklet Finisher (FS-612)

Upgrading the bizhub PRESS C7000/C6000 Professional with the booklet finisher will automate the production of booklets and brochures, providing a convenient and productive in-line half-fold and saddle-stitching functionality.



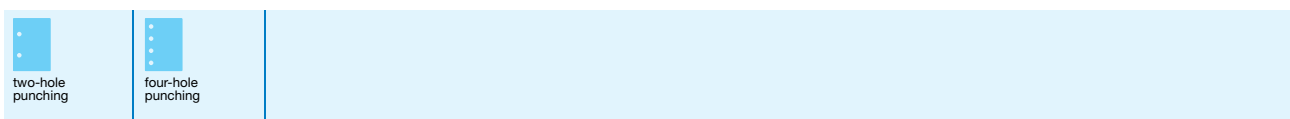
Post Inserter (PI-502)*

The post inserter PI-502 allows for pre-printed insertion of pages including chapter inserts and tabs.



Punch Kit (PK-512)*

The punch kit PK-512 allows for 2 and 4 hole punching for booklets and various other collateral.



* Requires FS-612



SUB
POWER



Technical specifications

Printer specifications

Print speed A4

Up to 71 ipm (bizhub PRESS C7000)
Up to 60 ipm (bizhub PRESS C6000)

Print speed A3

Up to 38 ipm (bizhub PRESS C7000)
Up to 34 ipm (bizhub PRESS C6000)

Print resolution

1,200 x 1,200 dpi x 8 bit
Max.: 1,200 x 3,600 dpi equivalent

Gradations

256 gradations

Paper range

64–300 gsm

Duplex Unit

Non-stack type, 64–300 gsm

Paper sizes

A5-SRA3

Maximum image area

321 x 480 mm

Paper input capacity

Maximum: 7,500 sheets
Main unit: up to 1,500 sheets
PF-602: up to 6,000 sheets

Paper output capacity

Max.: 13,600 sheets
Stacking unit with trolley: 5,000 sheets
Large capacity tray: 3,000 sheets
Per sub tray: 200 sheets

Main unit dimensions (W x D x H mm)

760 x 992 x 1,076 mm

Main unit weight

356 kg (only main unit)

Controller specifications

IC-306 EFI Fiery controller

CPU

@Intel Core2 Quad @ 2.66 GHz

RAM

2 GB high-speed memory

HDD

160 GB SATA hard drive

Interface

Ethernet (10/100/1000-Base-T)

File formats

Adobe® PostScript® Level 1, 2, 3
Adobe® PDF 1.4, 1.5, 1.6, 1.7;
PDF/X-1a, 3; EPS(option); TIFF(option);
TIFF/IT(option); JPEG(option);
PPML; Creo VPS compatible
Fiery® FreeForm™ v1/Fiery®
FreeForm™ v2.1

Client environments

Windows® 7/2000/XP/Vista™
Windows® Server 2003/2008
Macintosh® OSX (10.3.9 or later)
Intel Macintosh OSX (10.4 or later)

IC-307 Creo/Kodak Controller

CPU

@Intel Corei7 @ 2.8 GHz

RAM

2 GB system memory
3 GB image memory

HDD

2 x 500 GB system memory
2 x 500 GB image memory

Interface

Ethernet (10/100/1000-Base-T)

File formats

Adobe® PostScript® Level 1, 2, 3
Adobe® PDF 1.3 1.4, 1.5, 1.6, 1.7;
PDF/X-1a; EPS; TIFF (except for
Progressive JPEG and JPEG 2000);
CT/LW
Creo VPS
PPML

Client environments

Windows® 7/XP/Vista™
Windows® Server 2003/2008
Intel Macintosh OSX up to 10.6 (64bit)

IC-601 Konica Minolta embedded controller

CPU

@Intel Core2Duo @ 2.8 GHz

RAM

4 GB high-speed memory

HDD

2 x 500 GB SATA disc space

Interface

Ethernet (10/100/1000-Base-T)

File formats

Adobe® PostScript® 3; PCL 5c/6;
Native PDF; PDF 1.7; PDF/X-1a, X-3;
EPS; TIFF, TIFF/IT; JPEG; PPML

Client environments

Windows® 7/2000/XP/Vista™
Windows® Server 2003/2008
Intel Macintosh OSX (10.4.x to 10.6.x)

IC-413 EFI Fiery Controller

CPU

@Intel Core2Duo @ 2.6 GHz

RAM

2 GB high-speed memory

HDD

160 GB SATA hard drive

Interface

Ethernet (10/100/1000-Base-T)

File formats

Adobe® PostScript® Level 1, 2, 3
Adobe® PDF; 1.4, 1.5, 1.6, 1.7;
PDF/X-1a, 3; PCL, Fiery® FreeForm™
v1/Fiery® FreeForm™ v2.1

Client environments

Windows® 7/2000/XP/Vista™
Windows® Server 2003/2008
Macintosh OSX (10.3.9 or later)
Intel Macintosh OSX (10.4 or later)

Scanner specifications

Scanner speed A4

Up to 40 ipm

Scanner speed A3

Up to 22 ipm

Scanner resolution

600 x 600 dpi

Scan modes

TWAIN scan; Scan-to-HDD;
Scan-to-FTP; Scan-to-SMB;
Scan-to-Email

Scan formats

TIFF (single and multi page), PDF

Copier specifications

Copier speed A4

Up to 71 ipm (bizhub PRESS C7000)
Up to 60 ipm (bizhub PRESS C6000)

Copier speed A3

Up to 38 ipm (bizhub PRESS C7000)
Up to 34 ipm (bizhub PRESS C6000)

Copier resolution

Max.: 600 x 600 dpi

Gradations

256 gradations

FCOT

Less than 6.5 sec. (colour A4)

Magnification

25–400% in 0.1% steps

Multiple copies

1–9,999

Accessories

Automatic document feeder DF-622

Max.: 100 sheets

Large Capacity Tray LU-202

Paper capacity: up to 2,500 sheets
Paper weight: 64 to 300 gsm
Standard paper sizes: B5 - SRA3
Min. paper size: 210 x 182 mm
Max. paper size: 330 x 487 mm

Booklet finisher FS-612

Booklet making for up to 20 sheets
(80 images)
2-point and corner stapling
Stapling for up to 50 sheets
Centre fold and letter fold in
Auto-shift sorting and grouping
Output for up to 2,500 sheets
Sub tray for up to 100 sheets

Post inserter PI-502

(Option for FS-612)
Pre-printed sheet insertion
2 PI trays for 200 sheets each

Punch kit PK-512

(Option for FS-612)
Punching (2 and 4 holes selectable)

Humidifier unit HM-102*

Humidification de-curler

* Requires RU-509

Simitri HD
High Definition Polymerised Toner





KONICA MINOLTA

Konica Minolta
Business Solutions Australia Pty Ltd

Free Call 1800 789 389
konicaminolta.com.au

New South Wales

4 Drake Avenue
Macquarie Park NSW 2113
(02) 8026 2222

Victoria

21-29 Moray Street
Southbank VIC 3006
(03) 8699 0777

Queensland

64 Brookes Street
Bowen Hills QLD 4006
(07) 3872 9100

ACT

1/55 Wentworth Avenue
Kingston ACT 2604
(02) 6206 6500

South Australia

255 Gilbert Street
Adelaide SA 5000
(08) 8231 2911

Western Australia

50 Belgravia Street
Belmont WA 6104
(08) 9479 6600



All specifications relating to paper capacity refer to A4 size paper of 80 gsm quality.
All specifications relating to scanning, copying or printing speeds refer to A4 size paper that is scanned, copied or printed crosswise in multi-page, simplex mode.
The support and availability of the listed specifications and functionalities varies depending on operating systems, applications, network protocols as well as network and system configurations.

Some of the product illustrations contain optional accessories.
Specifications and accessories are based on the information available at the time of printing and are subject to change without notice.

Konica Minolta does not warrant that all specifications mentioned will be error-free.

Microsoft, Windows and the Windows logo are trademarks, or registered trademarks, of Microsoft Corporation in the United States and/or other countries.
All other brand and product names may be registered trademarks or trademarks of their respective holders and are hereby acknowledged.

Printed on a bizhub PRESS C7000/C6000

Product appearance, configuration and/or specifications are subject to change without notice.

The Konica Minolta logo and the symbol mark, are registered trademarks or trademarks of Konica Minolta Holdings, Inc. bizhub, PageScope, Simitri and the Emperon logo are registered trademarks or trademarks of KONICA MINOLTA BUSINESS TECHNOLOGIES, INC.

Windows is registered trademark of Microsoft Corporation in the United States and other countries.

Adobe and PostScript are registered trademarks or trademarks of Adobe Systems Incorporated.

All other brand and product names are registered trademarks or trademarks of their respective owners.



Ecology & Environment

KONICA MINOLTA copiers and multi-functional products are designed with the environment in mind.

- Energy Star
- RoHS Compliance
- WEEE Compliance
- Eco-conscious Toners
- Production at ISO Certified Factories

⚠ Requirements for safe use.

- Please read and follow the instruction manual to ensure safe operation.
- Only operate using appropriate power supply and voltage.
- Connecting the earth wire to an inappropriate place may cause explosion or electric shock. Please connect accordingly (Taiwan and the Philippines only).