

**Ecosys** stands for ECOlogy, ECONomy and SYStem-printing. With long-life components, ECOSYS devices are designed to maximise durability and minimise the total cost of ownership with regard to maintenance, administration and consumables. The cartridge-free system means that only the toner has to be replaced regularly, and the drum units every 600,000 pages. The modular design concept allows you to add workflow-enhancing functions as required. Integrated system software provides long-term cross-network compatibility. Kyocera's long-life components cost you and the environment less.

**PRESCRIBE IIc**

With the Kyocera page design and control language PRESCRIBE IIc even complex graphics, logos and forms (multipart forms) can be created independently on the system and saved and updated in the printer. Consequently, integration into print files no longer applies. They are only accessed as required and therefore relieve the load on the network.

**GENERAL**

**Technology:** Kyocera ECOSYS Colour Laser Printer

**Engine speed:**

Up to 50/25 pages per minute A4/A3 in colour  
Up to 55/27 pages per minute A4/A3 in mono

**Resolution:**

600 x 600 dpi  
Multi-Bit Technology for print quality of up to 9,600 x 600 dpi

**Maximum Monthly Duty Cycle:** 225,000 pages per month (A4)

**Warm-up time:** Approx. 30 seconds or less from sleep mode

**Time to first page:**

Approx. 4.9 seconds or less in mono  
Approx. 6.2 seconds or less in colour

**Dimensions (W x D x H):** 672 mm x 787 mm x 744 mm

**Weight:** Approx. 111 kg (basic unit ready for operation)

**Power source:** 220/240 V, 50 Hz

**Power consumption:**

Printing: 1,160 W in mono, 1,210 W in colour  
Stand-by: 170 W  
Power-Saving: 15 W

**Safety standards:**

GS, TUV, CE, AUS/NZS3260  
This unit is manufactured according to ISO 9001 quality standard and ISO 14001 environmental standard.

**PAPER HANDLING**

All paper capacities quote are based on 80gsm paper, thickness of max 0.11mm. Please use paper recommended by Kyocera under normal environmental conditions.

**Input capacity:**

150 sheet multi-purpose tray, 60-300 g/m<sup>2</sup>, A6R-304.8 x 457.2 mm, Banner max. 304.8 x 1,219.2 mm; 2 x 500 sheet universal paper cassette, 60-256 g/m<sup>2</sup>  
Max. input capacity with options: 7,650 sheets A4

**Duplex unit:**

Double-side printing: 60-256 g/m<sup>2</sup>; A3, A4, A5, B5, Letter, Legal, Custom

**Output capacity:**

Standard 500-sheet face down with paper full sensor

**CONTROLLER**

**CPU:** PowerPC 750GL/750 MHz

**Memory:**

1,024MB RAM, can be increased to 2,048MB RAM (single DIMM slot) as an option

**Hard Disk:** Standard 160GB HDD

**Standard interface:**

USB 2.0 (Hi-Speed), 2 x USB Host Interfaces dedicated for USB Flash Memory device, Fast Ethernet (10/100/1000 Base-TX for IPv4/IPv6)

**Controller language:** PRESCRIBE

**Emulations:** PCL6, PCL5c, PostScript\* 3 (KPD L 3), XPS Direct Print, PDF Direct Print, with automatic emulation sensing

**Operating systems:**

All current Windows operating systems, Mac OS X Version 10.2 or higher, UNIX, LINUX as well as other operating systems

**Fonts / barcodes:**

93 scalable fonts for PCL, 136 scalable fonts for PostScript\*\*, 8 fonts for Windows Vista\*\*, 1 Bitmap font, 45 barcodes (e.g. EAN8, EAN13, EAN128) with automatic generation of checksums as well as support of two-dimensional barcodes PDF-417 under PRESCRIBE (PCL and other barcodes available as an option)

**Integrated accounting:** 100 department codes

**CONSUMABLES**

**TK-8604K Toner Kit :**

Micro-Particle toner black for 30,000 pages A4 in accordance with ISO/IEC 19798

**TK-8604C, TK-8604M, TK-8604Y Toner-kits:**

Micro-Particle toner cyan, magenta, yellow for 20,000 pages A4 in accordance with ISO/IEC 19798

Capacity of starter toner is black 15,000 pages, and cyan, magenta, yellow is 10,000 pages each in accordance with ISO/IEC 19798

**Maintenance Kit A:**

MK-8505A Installed every 600,000 pages

**Maintenance Kit B:**

MK-8505B Installed every 600,000 pages

**Maintenance Kit C:**

MK-8505C Installed every 300,000 pages

**Staple Cartridge:**

SH-10 for optional DF-770, BF-730  
(SH-12 for optional DF-790)

**OPTIONS**

**PF-730 Paper feeder:**

2 x 500 sheets, 64-256 g/m<sup>2</sup>, A5R-304.8 x 457.2 mm, folio

**PF-740 Paper feeder:**

2 x 1,500 sheets, 60-256 g/m<sup>2</sup>, A4, B5, letter

**PF-770 A4 side deck:**

3,000 sheets, 60-300 g/m<sup>2</sup>, A4, B5

**PF-780 Multimedia tray and paper pass unit:**

500 sheets, 60-256 g/m<sup>2</sup>, A5R-304.8 x 457.2 mm

**The KYOCERA NetViewer**

The KYOCERA NetViewer enables complete monitoring and control of all ECOSYS printers and digital Kyocera multifunction units from any Windows® PC and thus provides ideal network administration. It also supports the standardised SNMP protocol.

**Status Monitor and Command Centre**

The Status Monitor shows the current printers condition and gives direct access to the Command Centre for the modification of settings that are not contained in the drivers (e.g. network settings, adjustment of sleep mode or blocking of the control panel).

**USB Host Interface for USB Flash Memory**

PDF files can be printed directly from a USB Flash Memory (e.g. USB stick) via the USB host interface. Documents are selected directly via the printer's control panel. No computer is required.

**DF-790(B) Document finisher + AK-730:**

Main tray: 4,000 sheets A4 (3,000 sheets with attachment BF-730); 60-300 g/m<sup>2</sup>; B5R-304.8 x 457.2 mm  
Sub tray: 200 sheets A4; 60-300 g/m<sup>2</sup>; A6R-A3  
Sub tray (top) 100 sheets; 60-300 g/m<sup>2</sup>; A6R-A4  
Stapling up to 65 sheets A4 or 30 sheets A3 at 3 positions, B5-304.8 x 457.2 mm

**DF-770(B) Document finisher + AK-730:**

Main tray: 1,000 sheets A4, 60-300 g/m<sup>2</sup>, B5E-A3, 3 positions stapling up to 50 sheets A4 or 30 sheets A3  
Sub tray: 100 sheets A4, 60-300 g/m<sup>2</sup>, A4-A6R

**PH-7C Hole Punch unit for DF-790(B)/DF-770(B):**

2-hole/4-hole 60-300 g/m<sup>2</sup>, A5R-A3

**BF-730 Booklet and tri-folding unit for DF-790(B):**

Max. 64 pages (16 sheets) booklet folding and stapling 60-256 g/m<sup>2</sup>, A3, B4, A4R, cover sheet 60-220 g/m<sup>2</sup> (simplex), tri-folding: 60-105 g/m<sup>2</sup>, multi tri-folding: 5 sheets (60-90 g/m<sup>2</sup>), 3 sheets (91-120 g/m<sup>2</sup>)

**MT-730 Mailbox sorter:**

7 bins x 100 sheets A4, 50 sheets A3/B4, 60-163 g/m<sup>2</sup>, no document finisher required

**Banner Guide A:** Up to 10 banner sheets

**Memory:**

DIMM-1GBSP: 1,024MB  
1 slot available for memory upgrade  
CompactFlash® card:  
1 slot (up to 4 GB) for printing forms, fonts, logos, macro storage

**Security:**

**Data security kit (E):**  
ISO 15408 (Common Criteria) with security level EAL 3  
Printed Document Guard Kit (A)

**Others:**

Card Reader Authentication Kit  
Keyboard  
Card Reader Holder  
Optional Interface  
IB-50: Gigabit-Ethernet board  
10BaseT/100BaseTX/1000BaseT  
LQ-850, Diablo 630 and IBM pro printer emulations

**WARRANTY**

2-year warranty as standard. Kyocera guarantees the drums and developers for 2 years or maximum 300,000 pages (whichever occurs sooner), provided the printer is used and cleaned in accordance with the service instructions.



> PRINT

**ECOSYS FS-8650DN**

COLOUR PRINTER  
FOR A3 AND A4  
FORMATS

THE HIGHLY  
PRODUCTIVE A3  
COLOUR PRINTER.



The FS-C8650DN is a high performance printer that delivers outstanding colour and monochrome prints at impressive speeds in both A4 and A3. The FS-C8650DN is built using Kyocera's unique long-life components, delivering excellent reliability and low running costs. And with the wide range of paper handling and finishing options, the FS-C8650DN is ideal for professional, large volume office use or in-house production.

- > Up to 50/55 pages per minute A4 in colour and monochrome
- > Up to 9,600 x 600 dpi printing quality with multi-bit technology
- > Standard duplex unit for double-sided printing
- > Standard USB and Network Connectivity
- > Outstanding finishing options for flexibility with high volumes

KYOCERA Document Solutions Australia  
Ph: 13 KYOCERA (596 2372)  
www.KyoceraDocumentSolutions.com.au

KYOCERA Document Solutions New Zealand  
Ph: 0508 KYOCERA (596 2372)  
www.KyoceraDocumentSolutions.co.nz

Kyocera does not warrant that any specifications mentioned will be error-free. Specifications are subject to change without notice. Information is correct at time of going to press. All other brand and product names may be registered trademarks or trademarks of their respective holders and are hereby acknowledged.

# ECOSYS FS-C8650DN: FAST, ROBUST, VIBRANT COLOUR OUTPUT

The Kyocera ECOSYS® FS-C8650DN redefines A4 and A3 Colour Printing with the superior performance, power, quality and ultra-reliability that your business demands. At prolific output speeds of up to 55 ppm monochrome and 50 ppm colour, combined with Kyocera's unique long life technology, exceptional

product functionality and consistent colour image quality, the FS-C8650DN assures superior document handling every time. And with the wide range of paper handling and finishing options, the FS-C8650DN is ideal for professional, large volume office use or in-house production.

## ROBUST 4,000 SHEET FINISHER

This robust finisher supports multi-position stapling and a variety of paper weights. Options include 2/4 hole punch, 7 bin mailbox and booklet folding for all your advanced finishing needs.

## EFFICIENT DUPLEX

Standard stackless duplex helps you reduce paper consumption by producing 2-sided originals on stock up to 256 g/m<sup>2</sup> from the paper trays.

## PROFESSIONAL BOOKLET FOLDING

Fold and saddle stitch booklets, up to 16 individual sheets from A4 to A3, for that professional touch in-house.



## PROFESSIONAL 7-BIN MAILBOX

The 7-bin mailbox sorter provides faster and more efficient organisation of print outs for your office.

## ADVANCED USB HOST INTERFACE

Conveniently print - from any USB drive right from the touch screen control panel in PDF, JPEG, TIFF and XPS file formats.

## VERSATILE MULTI-PURPOSE TRAY

A standard 150 sheet multi-purpose paper tray can handle mixed media types, from statement to ledger, and up to 300 g/m<sup>2</sup> for your special

## FLEXIBLE PAPER HANDLING

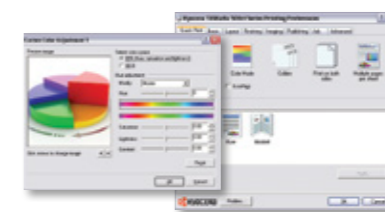
An innovative paper path design allows for a variety of paper weights through the trays, giving you the flexibility to satisfy virtually all your print and copy needs.

## COLOUR NEVER LOOKED SO GOOD

The FS-C8650DN brings the WOW factor to your business. Whether you want to persuade, present or just attract attention, the FS-C8650DN will raise the bar on the quality of your documents.

Powerful, intuitive and incredibly efficient, the proven technology engineered into every Kyocera printer delivers brilliant, high-impact colour. In addition, an intelligent colour calibration system puts you in control, while ensuring consistent colour reproduction page after page. Colours are true, gradations are smooth, and shading is accurate.

The result? Vivid colour and crisp monochrome documents that reflect your professionalism.



## POWER AT THE DESKTOP

Kyocera's advanced KX Driver allows users to take full advantage of unique print features including the ability to save profiles for common jobs and advanced colour settings to maximise your output quality.



## HIGH END PERFORMANCE & DESIGN

> Fast, Superior Colour Imaging for a Solid Impression. At speeds up to 55 ppm monochrome and 50 ppm colour, combined with proven colour technology, the FS-C8650DN brings brilliant colour to your output and enhanced quality control from the first print to the last.

> Micro-Particle Toner. Kyocera's unique, micro-particle toner provides superior image quality in both colour and monochrome. 30,000 pages Black, 20,000 pages CMY at ISO 19798 industry standards.

> Proven Technology & Ultra Reliability. Kyocera's award-winning technology incorporates long life imaging components that can dramatically lower your total cost, while providing high productivity and exceptional image quality.

> Ultimate Document Creation & Output Efficiency. PRESCRIBE® offers your business a flexible, on-demand printing solution for forms, letterheads and similar corporate documents. PRESCRIBE eliminates the cost and storage space associated with preprinted forms.

> Integrated Solutions. Leverage the full potential of your printer with tools and utilities designed to maximise your security, management and accounting capabilities.

## FLEXIBILITY TO GROW WITH YOUR BUSINESS



### OPTIONAL 1,000 SHEET FINISHER

- > Multi-Position Staple
- > 60-300 g/m<sup>2</sup>
- > Optional 2 and 4 hole punch unit



### OPTIONAL 4,000 SHEET FINISHER

- > Multi-Position Staple
- > Optional 2 and 4 Hole Punch
- > 60 - 300 g/m<sup>2</sup>



### 7 BIN MAILBOX

- > Output Sorting – Up to 7 Individual Mailboxes
- > 60 - 163 g/m<sup>2</sup>
- > No finisher required



### OPTIONAL BOOKLET FOLDER FOR 4,000 SHEET FINISHER

- > Folding up to 16 Sheets
- > Saddle Stitch
- > A4 to A3 Sized Sheets
- > 60 - 256 g/m<sup>2</sup>



### DUAL 500 SHEET TRAYS

- > A5 to A3 Sized Sheets
- > 64 - 256 g/m<sup>2</sup>



### 3,000 SHEET LARGE CAPACITY TRAY

- > A4 Sized Sheets
- > 60 - 256 g/m<sup>2</sup>