

# Panasonic



Plain Paper Laser Fax

UF-6300

Panafax

# Power faxing at your fingertips

## SEND with speed and confidence

### High-speed and Reliable Scanning

Built for true business-level faxing, the UF-6300 is equipped with a 50-page automatic document feeder which can quickly scan documents at a rate of 3 seconds per page. With a touch of a button, multi-page documents are on their way and you are free to tackle more important tasks!

### 480-page Capacity Large Document Memory

With its high-capacity 8MB document memory, the UF-6300 can store up to 480 pages\*1. That's more than enough memory to easily handle several high-volume jobs at once. No wasted downtime!

\*1 Based on ITU-T Image No.1 scanned in standard mode.

### Job Build

When a large job exceeds the ADF capacity, UF-6300 lets you batch feed it into memory, and then assembles into a single transmission. Just one of the many convenient UF-6300 features designed to handle large jobs and save valuable time!

### Super Fast Fax Transmission

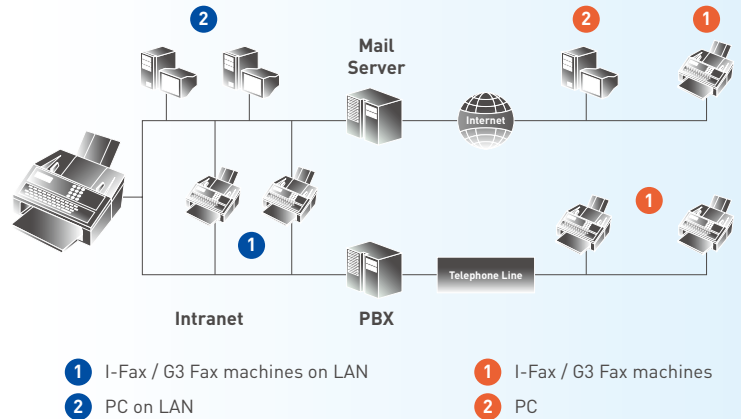


With Quick Memory Transmission, the UF-6300 starts dialling as soon as the first page is scanned in. Another time-saving feature for sending large, multi-page documents!

### Email/G3 Fax Hybrid Solution\*2

Add the optional Internet Fax Module and UF-6300 transforms into a hybrid solution that can simultaneously send or receive G3 faxes using phone line, while sending or receiving internet faxes through LAN connections. Double your office productivity!

\*2 Requires optional Internet Fax Module



### Fax Driver for Easy PC Faxing



PC Faxing saves both time and paper. With the Fax Driver that comes standard with UF-6300, sending faxes from your desktop is as simple as selecting the Printer Driver and inputting the destination fax number.

No need to print the document or walk over to the fax machine!



**3 seconds**  
Quickscan



**250 Standard**  
**500 Max**  
Paper tray capacity



**Reliable ADF**  
with Job Build



## RECEIVE with interruption-free convenience

### 250-sheet Capacity Tray (Max. 500 sheets with option)

With 250 sheets of paper in the standard tray, UF-6300 is always ready to receive large numbers of faxes. If that is not enough, you can add an optional tray for total maximum capacity of 500 sheets!

### 100-sheet Reception Tray

The reception tray holds up to 100 pages. No worries about large jobs overflowing the tray. Just pick up your faxes when you are ready!

### 8,000-page Capacity All-in-One Cartridge

Running out of toner in the middle of receiving a job is annoying. The All-in-One cartridge with capacity to print up to 8,000 pages\*3 means less frequent replacement, simple changing, and one less worry! If toner runs out in the middle of reception, the received data will be automatically stored in the memory.

\*3 Based on ITU-T Image No.1 scanned in multiple copy mode. Yield may vary according to operating conditions and environment where the machine is installed.

### Junk Fax Filter

Block junk faxes by registering unwanted senders. It's a great way to prevent wasting paper, toner and valuable time on junk faxes.



## OPERATE with intuitive ease

### Ergonomically Designed Panel



UF-6300 features an ergonomically designed operation panel. All the hard keys are laid out logically and labeled clearly for stress-free operation. Status indicator lets you

know at a glance when machine is in use or requires maintenance.

### 340-Station Auto Dialler

Often used fax numbers can be stored in 40 one-touch buttons or 300 abbreviated buttons in memory for easy mistake-free faxing.

### Directory Search with the QWERTY keyboard

Input of directory information is easy with the familiar QWERTY keyboard. The large keys also make directory search simple. Just input the first few letters and it will soon find and show matching names on the LCD. Use the up and down keys to navigate the list and select the name you are looking for.

### Backlit LCD

UF-6300 features easy-to-read backlit LCD for clear display of information.

## SECURITY for the integrity of your business

UF-6300 comes equipped with robust fax transmission security. Three levels of protection prevent you from accidentally sending faxes to the wrong party.

### 1. Direct Dial "Re-Entry"

When using direct dialling, you are asked to re-enter the number once more before the machine starts sending the fax.

### 2. Direct Dial "Blocking"

UF-6300 can be set to prevent all direct dialling. You can send faxes using only speed dial numbers.

### 3. On-Screen Address Confirmation

In this mode, UF-6300 shows the registered name of the recipient on the display, allowing you to re-check that the fax is destined to the intended party.

## Built-in maintenance and support



Keep your work flowing with maintenance support features like Check & Call for automatic reporting of low-toner status and mechanical problems, and the built in Remote Diagnostic System for fast troubleshooting by technicians via the telephone line or Internet.

## Features

- Auto Dialler One-touch: up to 40 stations (including program keys)  
Abbreviated: up to 300 stations  
Maximum digits for telephone number: 36
- Program keys (up to 8 Programs)
- Multi-Tasking Operation
- Directory Search Dialling
- Misdial Prevention
- Directory Sheet Print
- Intelligent Redial
- Chain Dialling
- Distinctive Ring Detection (DRD)
- Quick Memory Transmission
- Multi-station Transmission (up to 352 stations)
- Automatic Memory Retransmission
- Deferred Transmission
- Deferred Multi-station Transmission
- Priority Direct Transmission
- Job Build (Max. 255 pages)
- Edit File Mode with View Mode
- Automatic Cover Sheet
- Junk Fax Filter
- Receive to Memory
- Substitute Reception
- Selective Reception
- Number of memory job files (Max. 50 files)
- Fax Forward (G3/Email)
- Polling/Multi-station Polling (up to 352 stations)
- Deferred Polling/Deferred Multi-Station Polling
- Confidential Mail Box\*<sup>1</sup> (10 mail boxes)
- Password Transmission/Reception\*<sup>1</sup>
- ITU-T Sub-address Transmission
- Panasonic Super Smoothing (Fax/Copy)
- 64-Level Halftone
- Automatic/Fixed Reduction
- Overlapping Print
- Collation Stack with Face Up
- Verification Stamp
- Communication Journal with image data
- Header/Total Page Print
- Transaction Journal with view mode
- Fax Access Code (Fax Lock)
- PIN Code Access
- Fax/Tel Auto Switch
- External TAM Interface
- Remote Reception
- LCD Display with Backlight (20 x 2 lines)
- Energy Saver
- Remote Diagnostic System (G3/Email)\*<sup>2</sup>
- Check & Call Function (G3/Email)
- LDAP 2 Compatible
- SMTP Authentication
- APOP
- POP Before SMTP

### Standard Software

- Printer Driver
- Twain Scanner Driver
- PC-Fax software (Panafax Desktop)
- Quick Image Navigator
- Phone Book Editor
- Configuration Editor
- Status Monitor



**Handset Kit**  
UE-403186\*\*



## Options

- Internet Fax Module (UE-404094)\*<sup>3</sup>
- 250-sheet 2nd Paper Feed Module (UE-409090)
- Handset Kit (UE-403186)\*<sup>3</sup>

## Consumables

- All-In-One Print Cartridge (UG-3380)  
8000 pages\*<sup>4</sup>

## UF-6300 Specifications

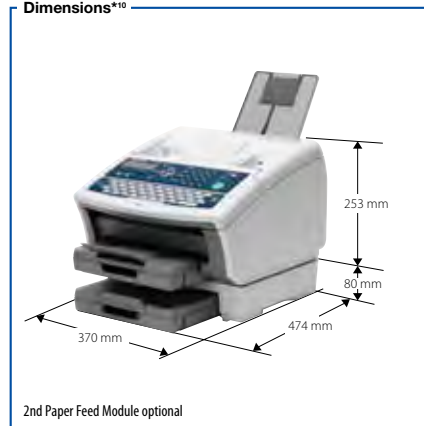
Compatibility	ITU-T Group 3, ECM	
Modem Speed	33.6 kbps - 2.4 kbps with automatic fallback	
Coding Scheme	MH/MR/MMR	
Transmission Speed* <sup>5</sup>	Approx. 3 sec.	
Document Size	Max.	257 mm x 2000 mm (with operator's assistance)
	Min.	148 mm x 128 mm
Effective Scanning Width	208 mm	
Automatic Document Feeder Capacity* <sup>6</sup>	Up to 50 sheets (A4)	
Scanning Resolution (Fax)	Standard:	8 dots/mm x 3.85 lines/mm
	Fine:	8 dots/mm x 7.7 lines/mm
	Super Fine:	8 dots/mm x 15.4 lines/mm
		16 dots/mm x 15.4 lines/mm* <sup>9</sup>
Scanning Speed* <sup>7</sup>	Approx. 3 sec. (A4, Standard mode)	
Recording Method	Laser printing on plain paper	
Recording Paper Size	A4 / Letter / Legal	
Effective Recording Width	202 mm (A4)	
Recording Paper Capacity	250 sheets (75 g/m <sup>2</sup> ), Max. 500 sheets with optional Paper Feed Unit	
Recording Resolution	Fax / Copy	406 dpi x 391 dpi
	Printer	600 dpi x 600 dpi
Image Memory Capacity* <sup>8</sup>	8 MB (Approx. 480 pages)	
Printer / Scanner Interface	USB 1.1	
Scanner Driver	TWAIN	
Scanning Resolution (PC)* <sup>9</sup>	400 dpi x 400 dpi	
Power Requirements	AC 220 - 240V, 60 Hz	
Power Consumption	Max.	Approx. 490 W
	Sleep mode:	2.4 Wh
Dimensions (W x D x H)* <sup>10</sup>	370 mm x 474 mm x 253 mm	
Weight* <sup>10</sup>	9.3 kg (Excluding consumables and optional equipment)	

### Note

- \*<sup>1</sup> Panafax proprietary features work only with selected Panafax machines.
- \*<sup>2</sup> Requires Remote Diagnostic System software.
- \*<sup>3</sup> Not available for certain countries.
- \*<sup>4</sup> Based on ITU-T Image No. 1 scanned in multiple copy mode. Yield may vary according to operating conditions and environment where the machine is installed.
- \*<sup>5</sup> Transmission time applies to memory transmission of text data using only ITU-T Image No. 1 between the same models at maximum modem speed. Transmission time may vary in actual usage. Usually public telephone lines can only support communications speeds of 28.8 Kbps or lower. Via PBX, transmission speed may fall back to a lower speed.
- \*<sup>6</sup> Using 60 g/m<sup>2</sup> sheet. Set the documents as stairs shape.
- \*<sup>7</sup> Scanning speed applies to the feeding process from the top to the end of a single page test chart. The time for the feeding process does not include the time that it takes for the top edge of the page to reach the scanning point and page ejection. Time for entire storing process is not applied.
- \*<sup>8</sup> Based on ITU-T Image No. 1 scanned in Standard mode.
- \*<sup>9</sup> Interpolated resolution (Optical Resolution: 203 dots/inch x 391 lines/inch)
- \*<sup>10</sup> Dimensions and weight are approximate.

Microsoft® and Windows® are registered trademarks of Microsoft Corporation.  
All other brand or product names are the property of their respective holders.  
Design and specifications are subject to change without notice.

### Dimensions\*<sup>10</sup>



### ISO 9001 Quality Management System

Our business processes which produce document, information and network products, from manufacturing to marketing, conform to ISO9001 Quality Management Systems standard. Design, development, manufacture, installation, repair and maintenance of document, information and network products, their associated devices and consumables. In addition, the plants outside Japan have acquired ISO 9001 certification.

