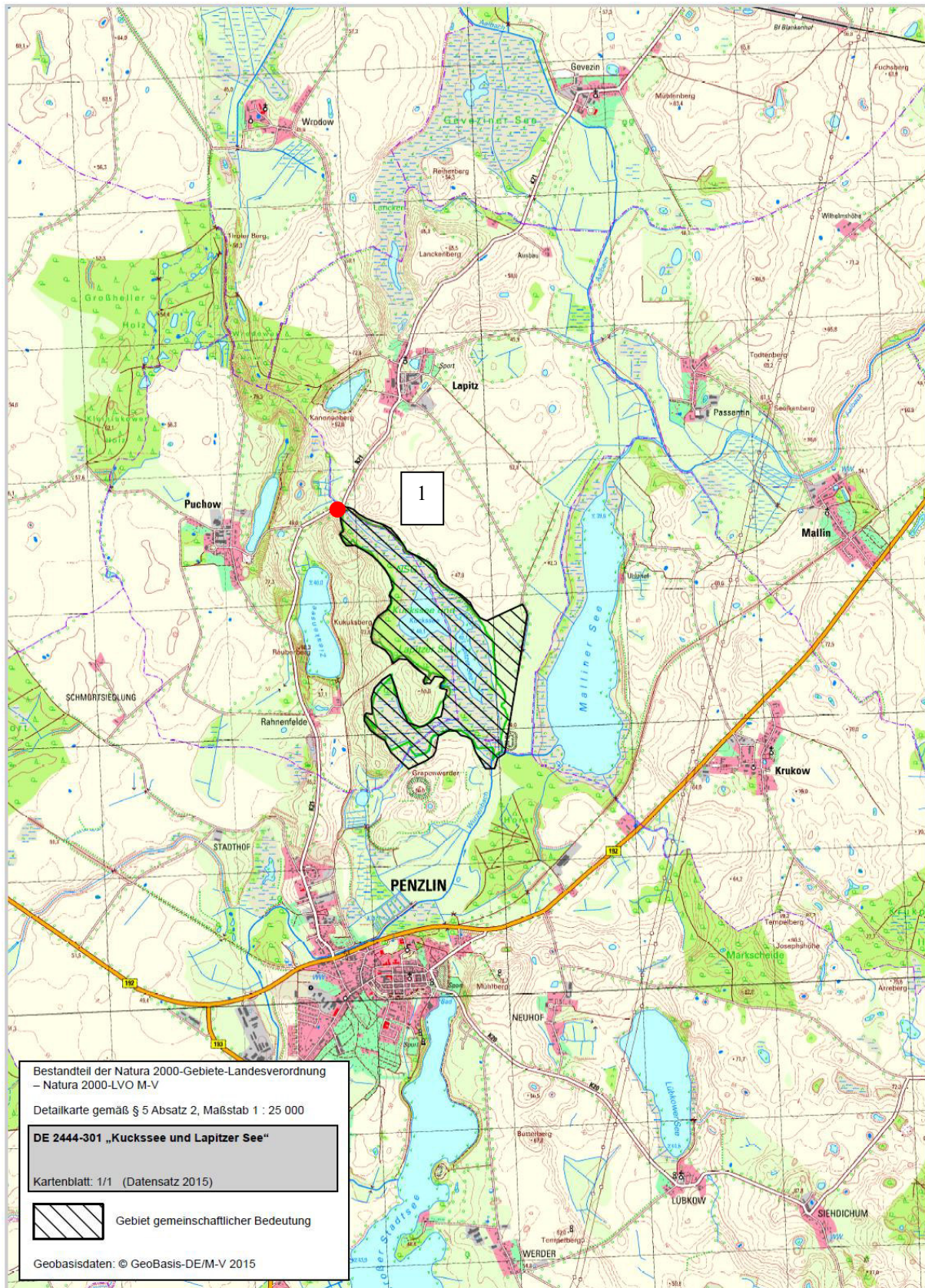
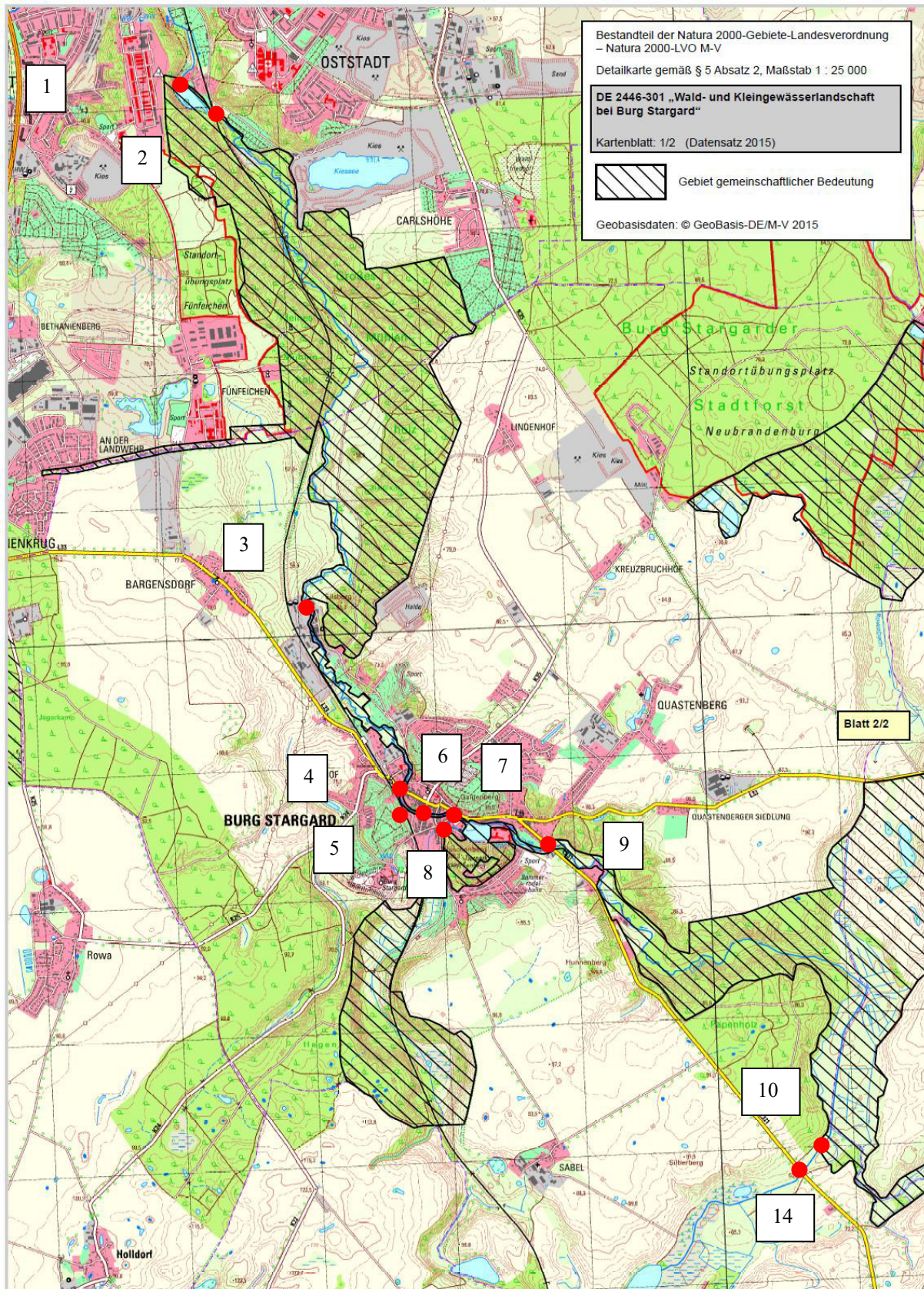
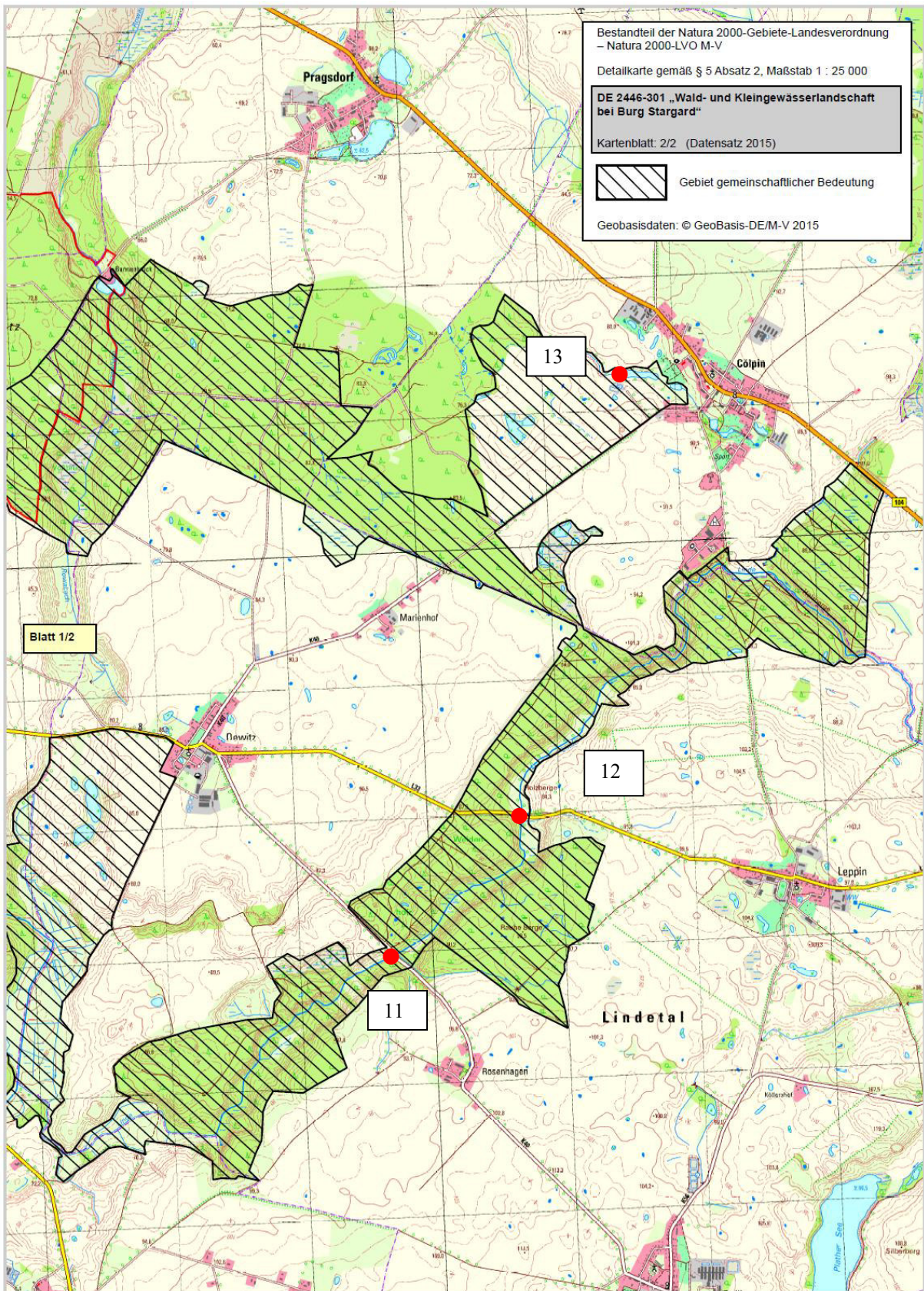


# Detailübersichtskarten des GGB DE 2444-301 „Kuckssee und Lapitzer See“

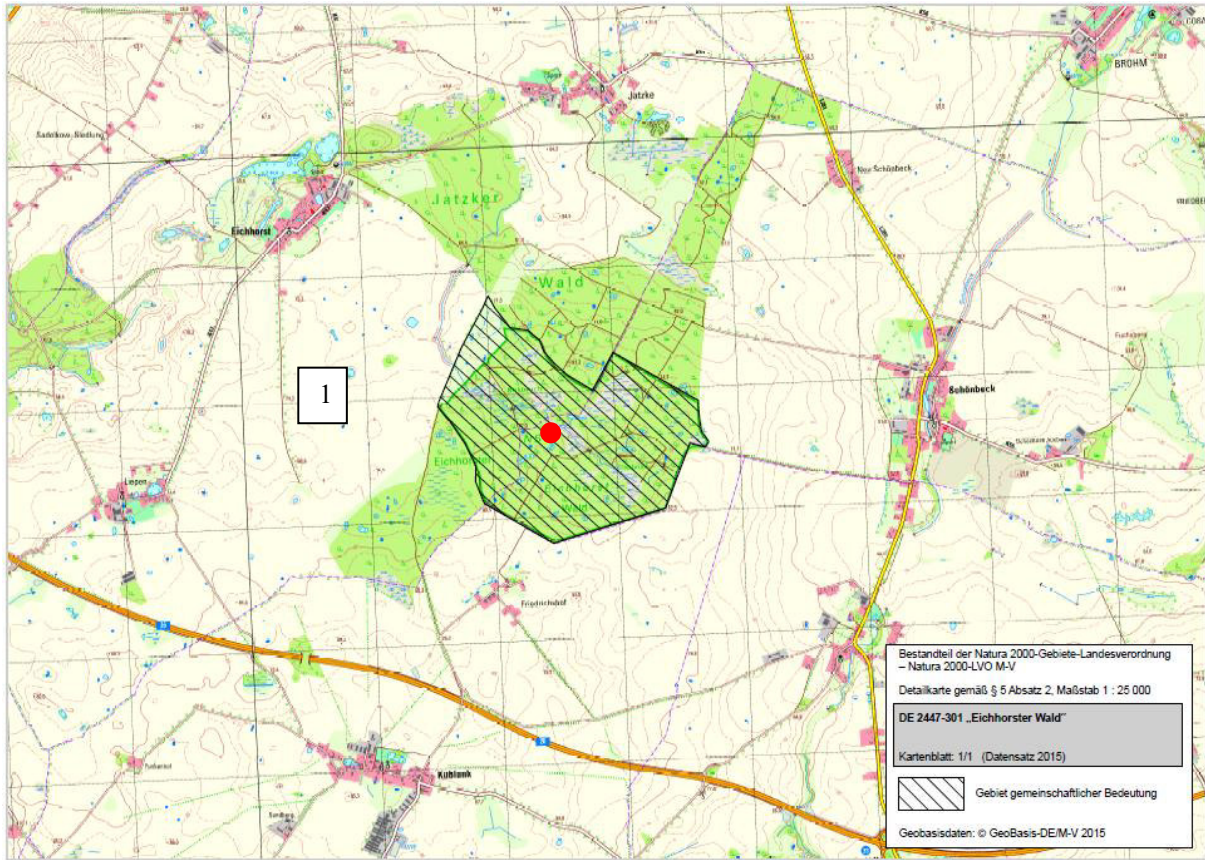


**Detailübersichtskarten des GGB DE 2446-301**  
**„Wald- und Kleingewässerlandschaft bei Burg Stargard“**

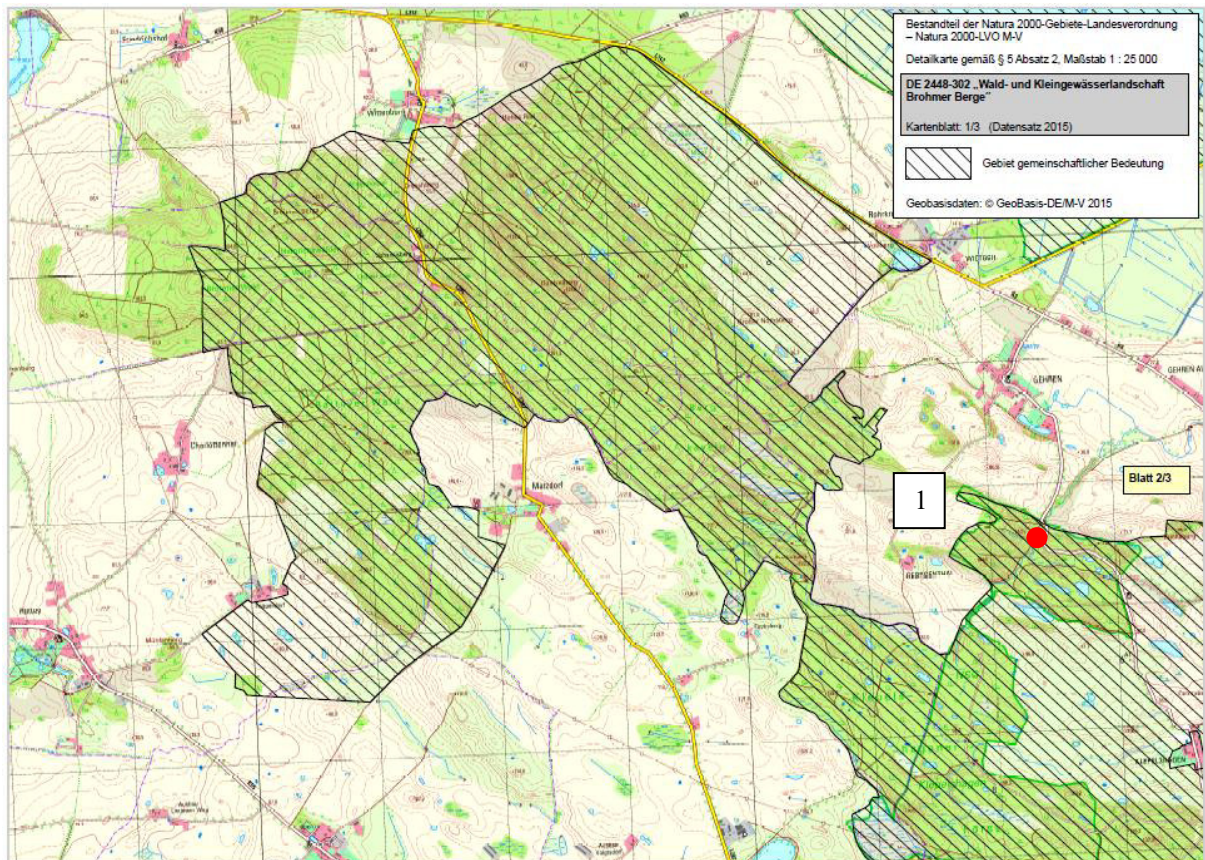


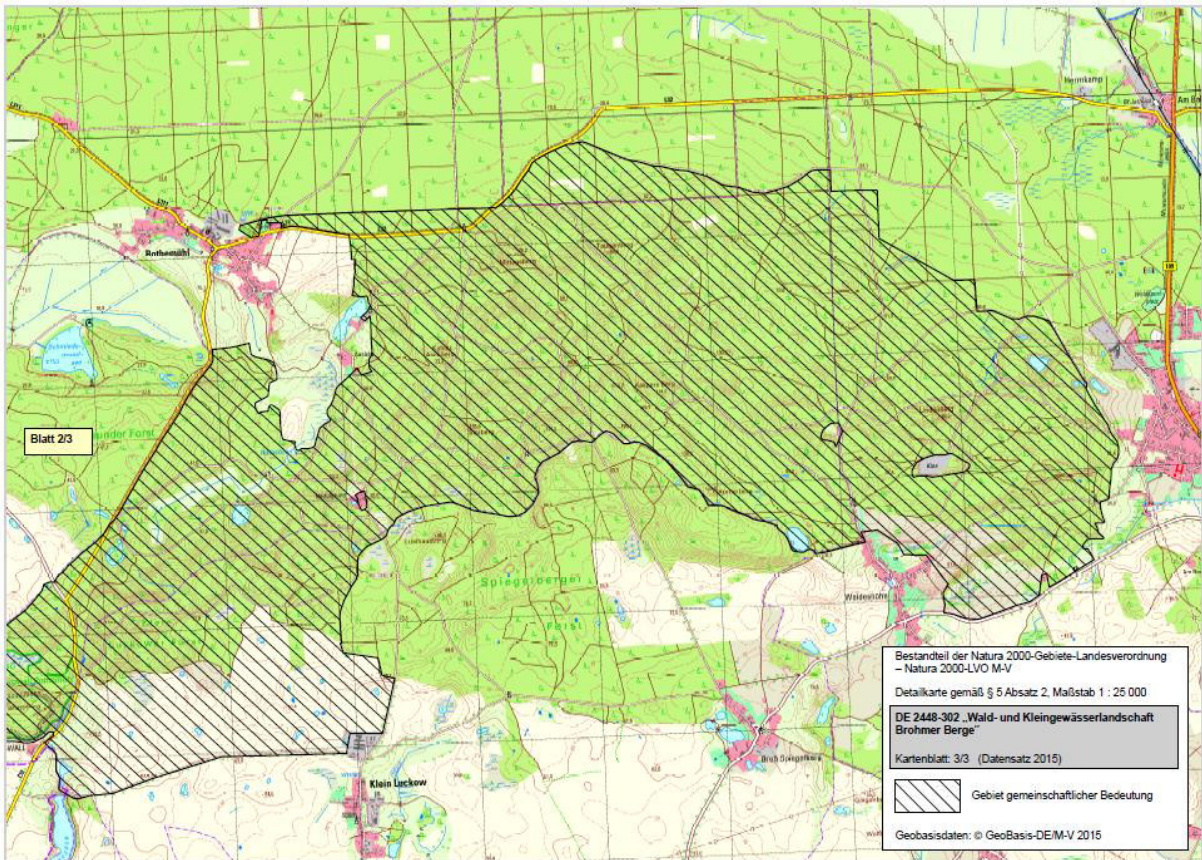
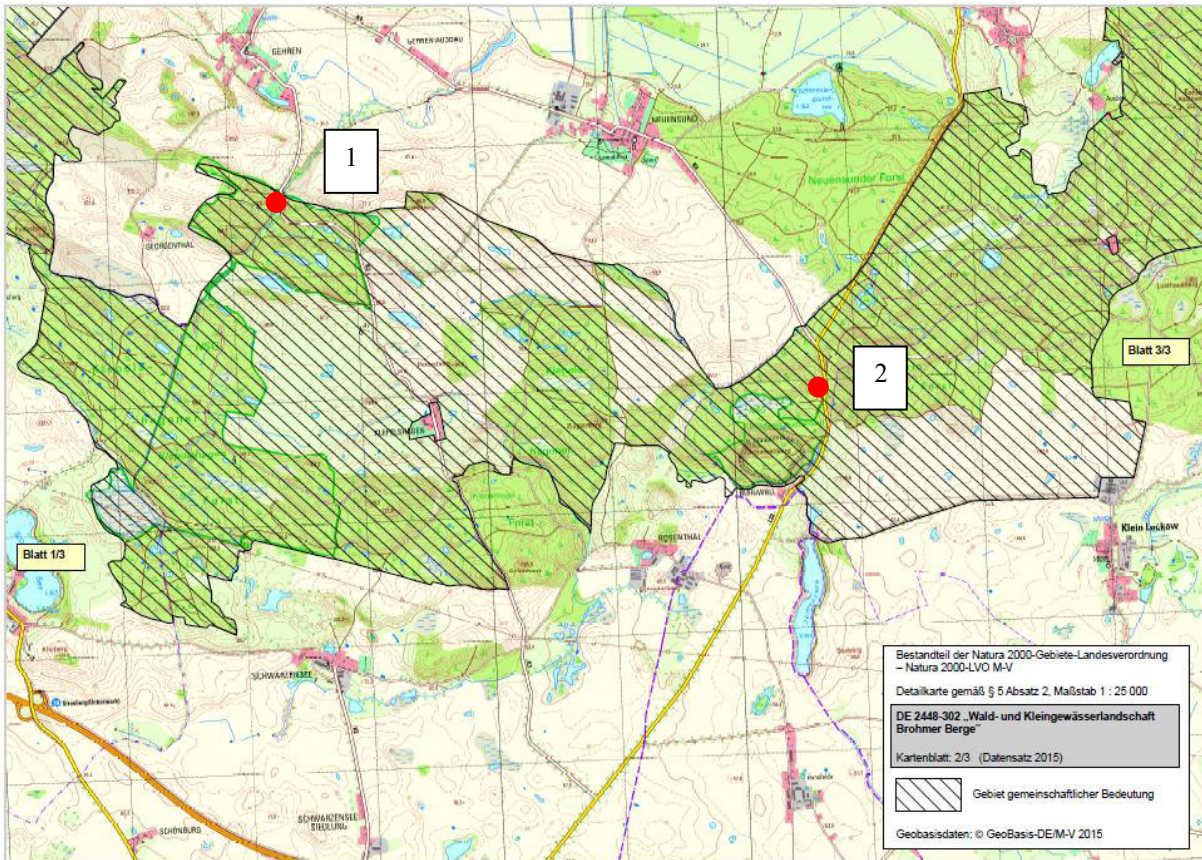


**Detailübersichtskarten des GGB DE 2447-301 „Eichhorster Wald“**

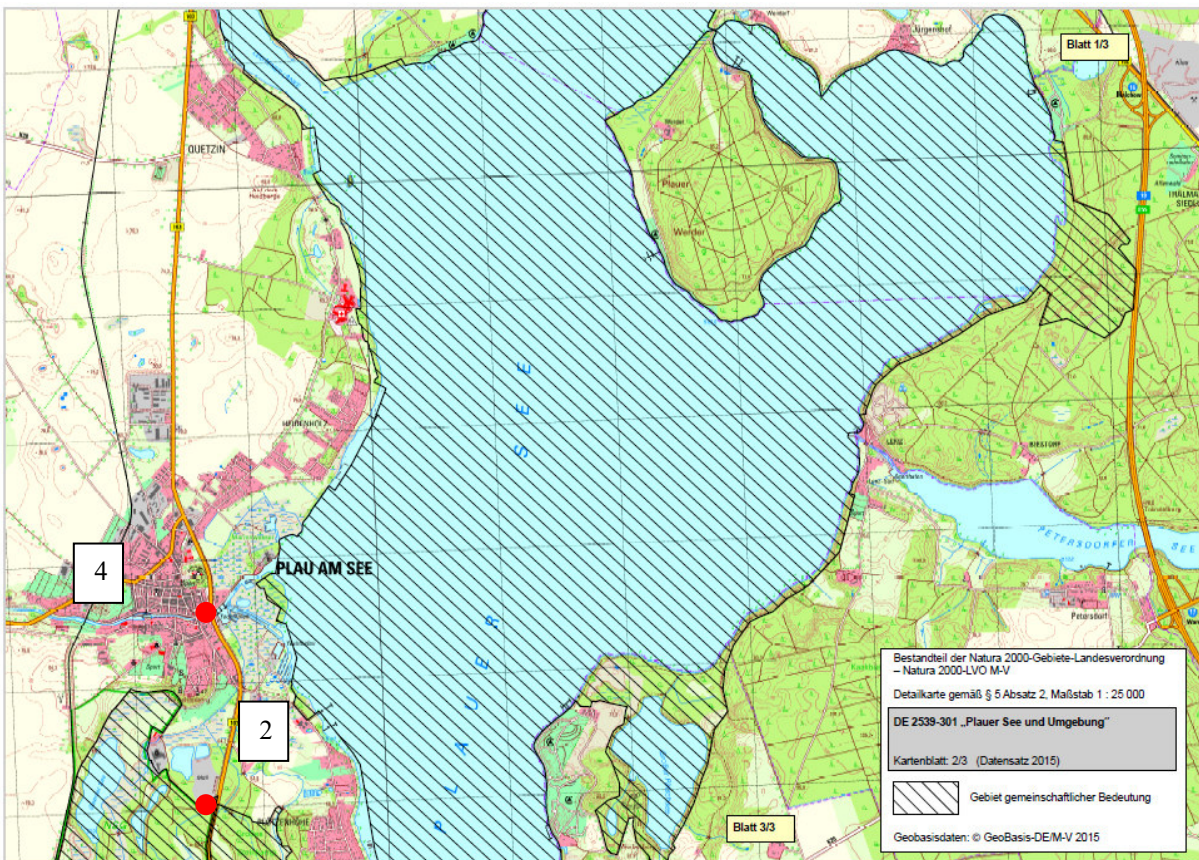
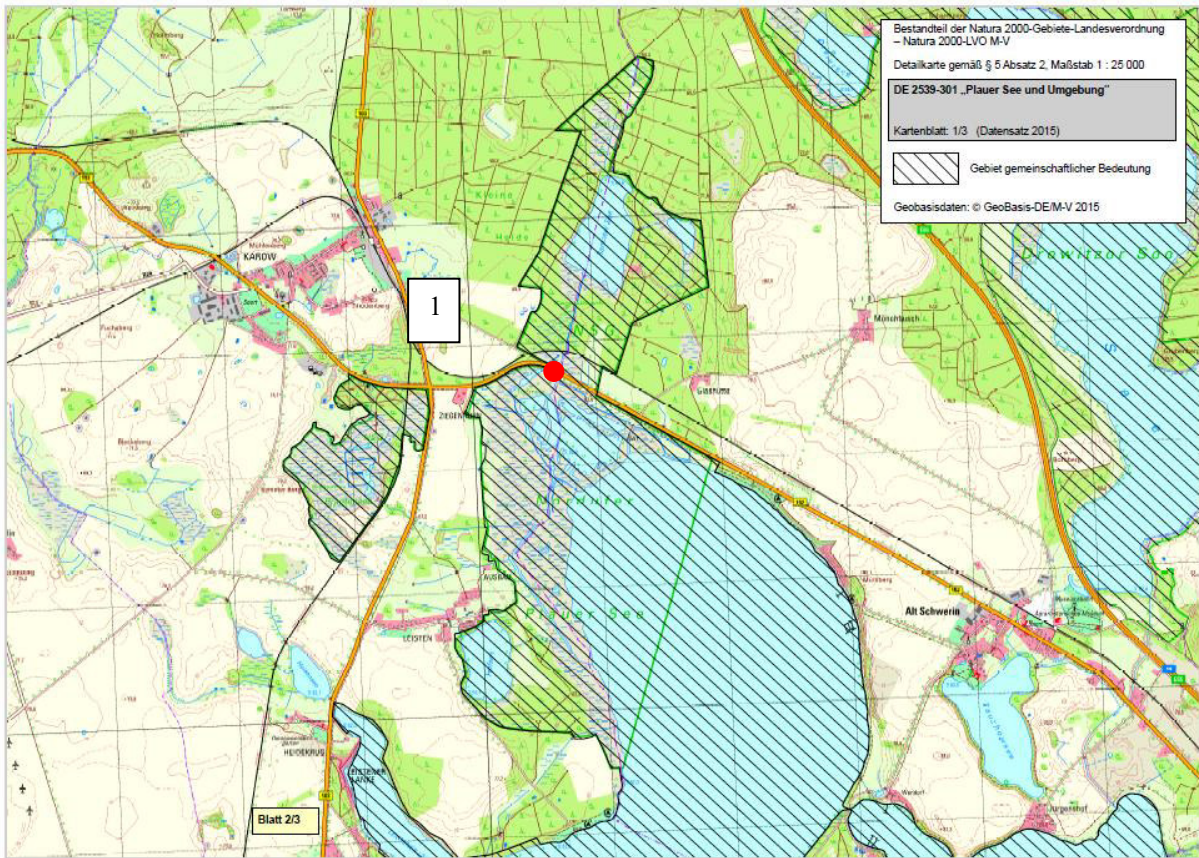


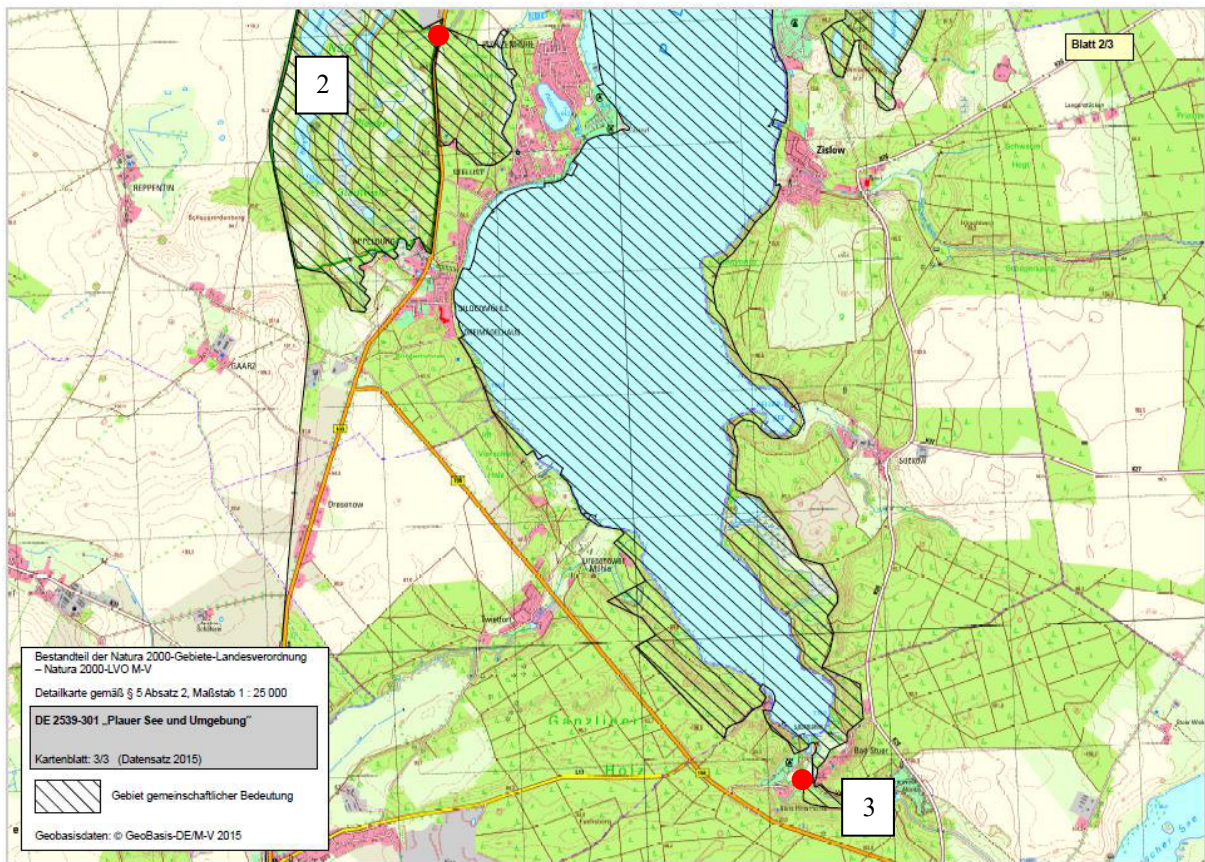
**Detailübersichtskarten des GGB DE 2448-302  
„Wald- und Kleingewässerlandschaft Brohmer Berge“**



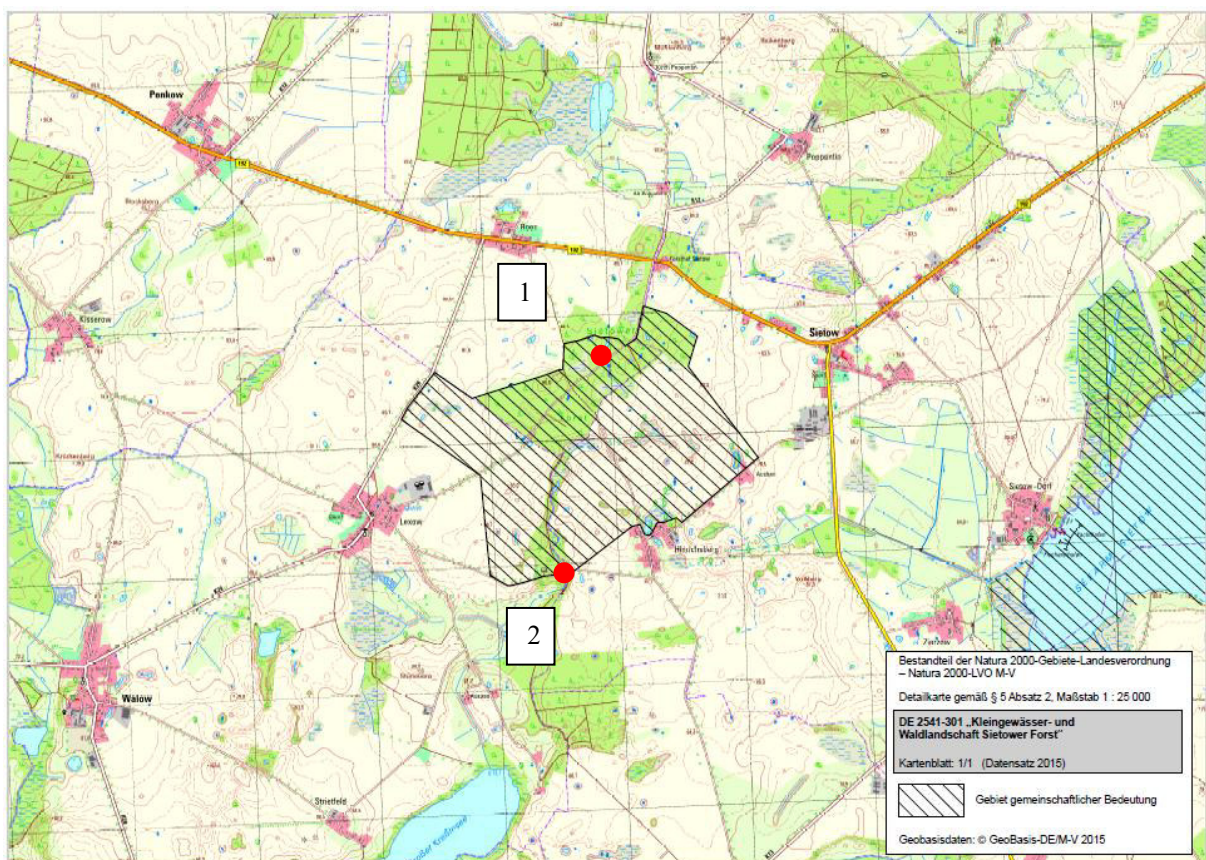


## Detailübersichtskarten des GGB DE 2539-301 „Plauer See und Umgebung“

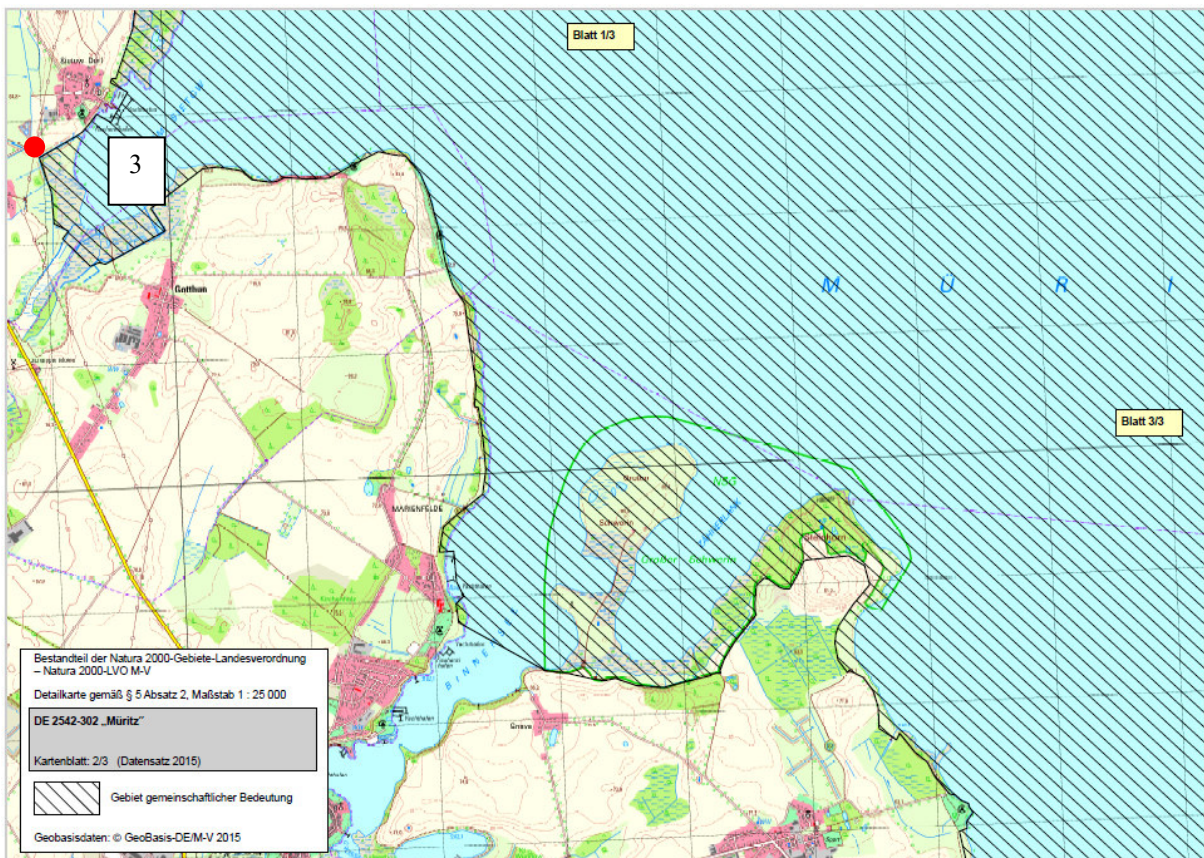
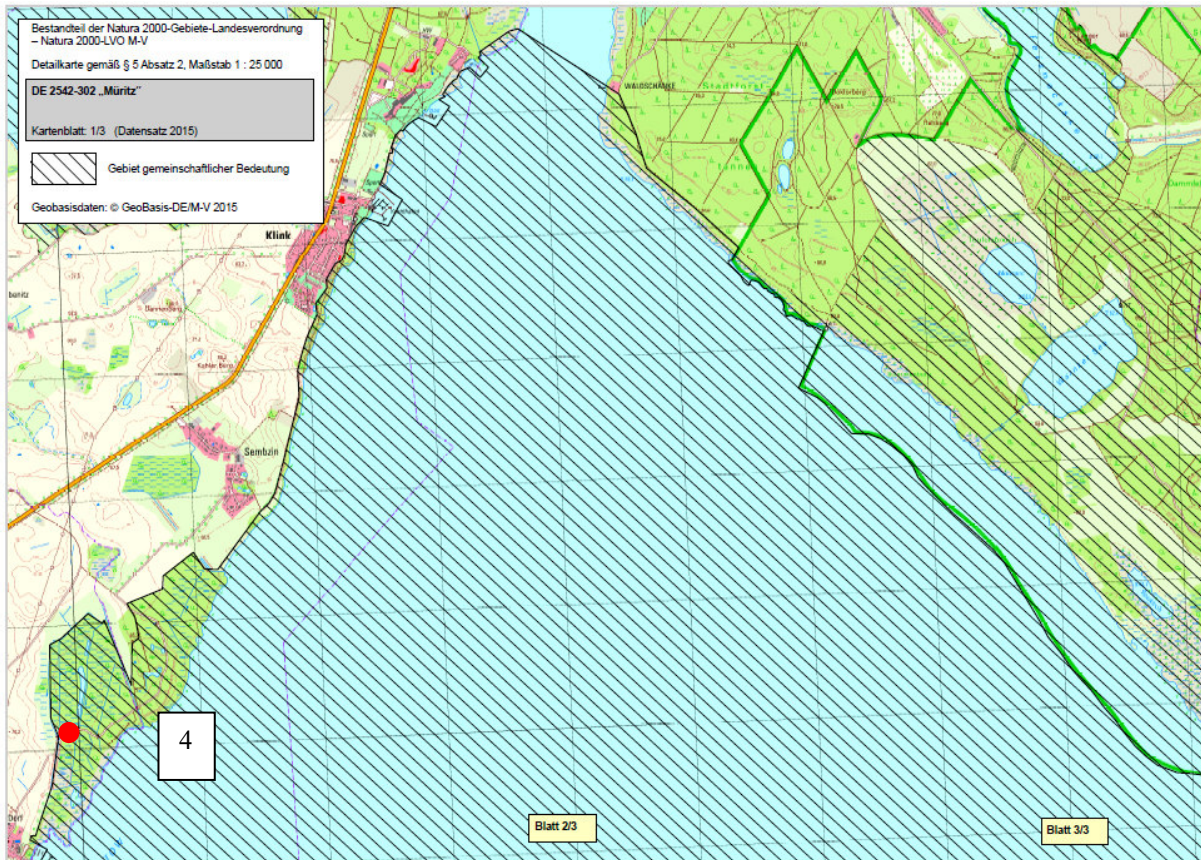




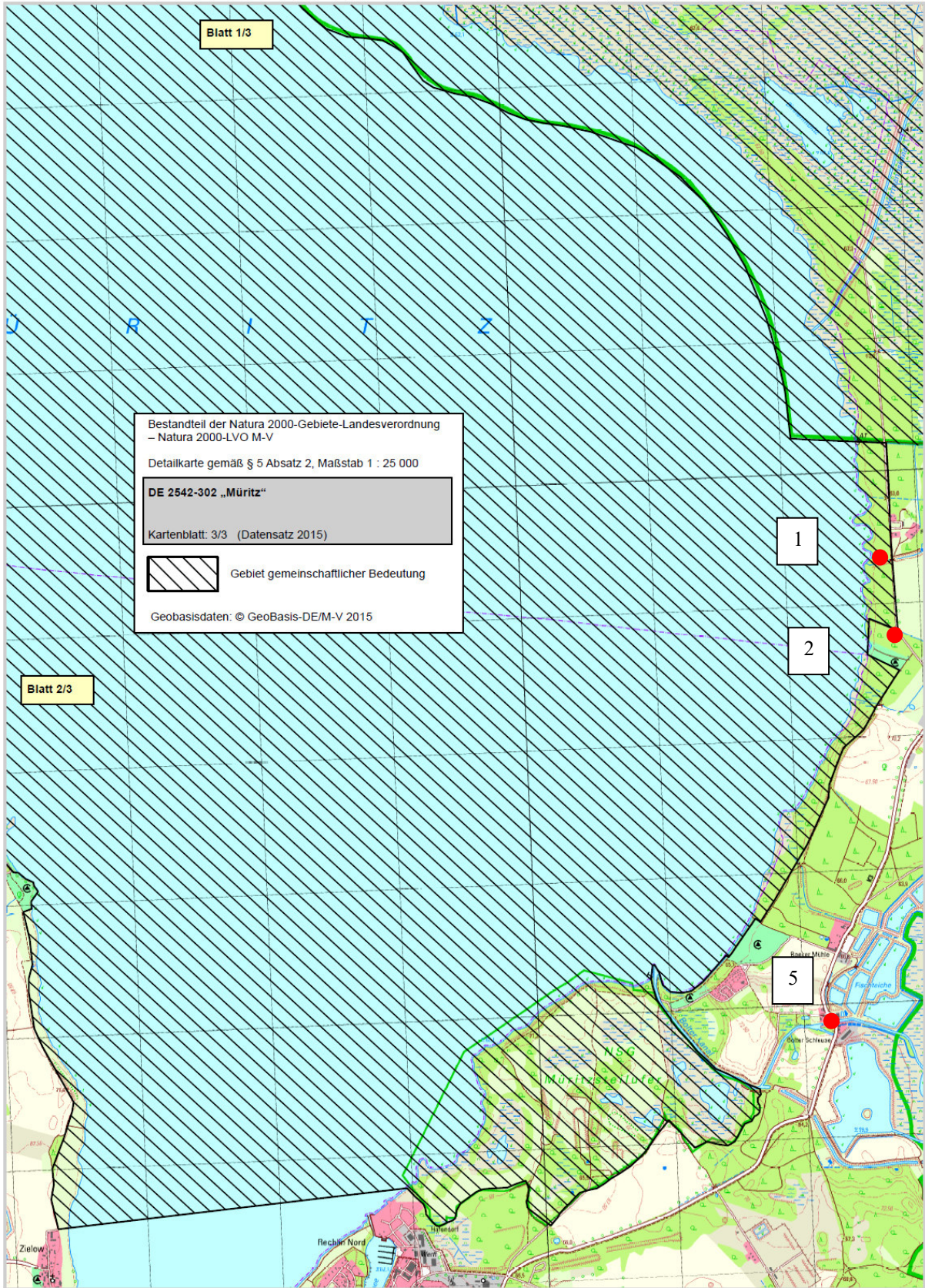
**Detailübersichtskarten des GGB DE 2541-301  
„Kleingewässer- und Waldlandschaft Sietower Forst“**



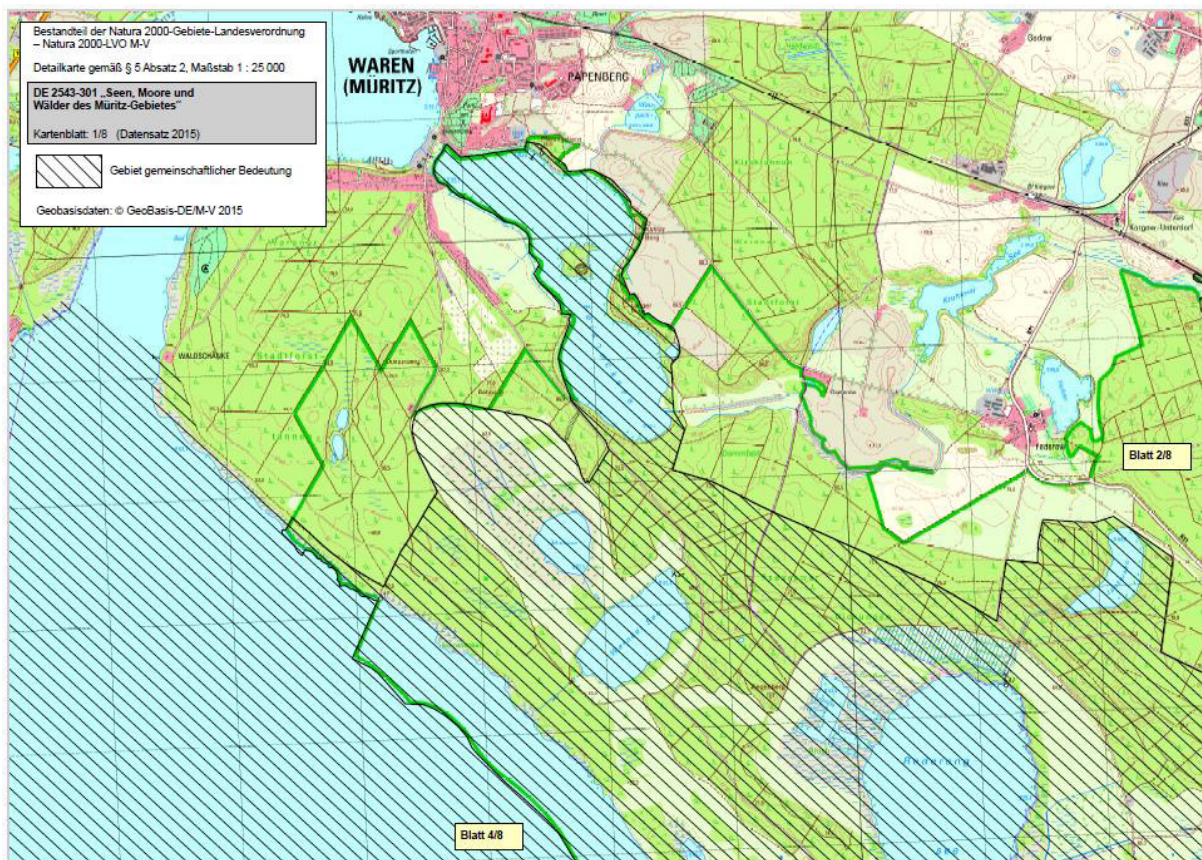
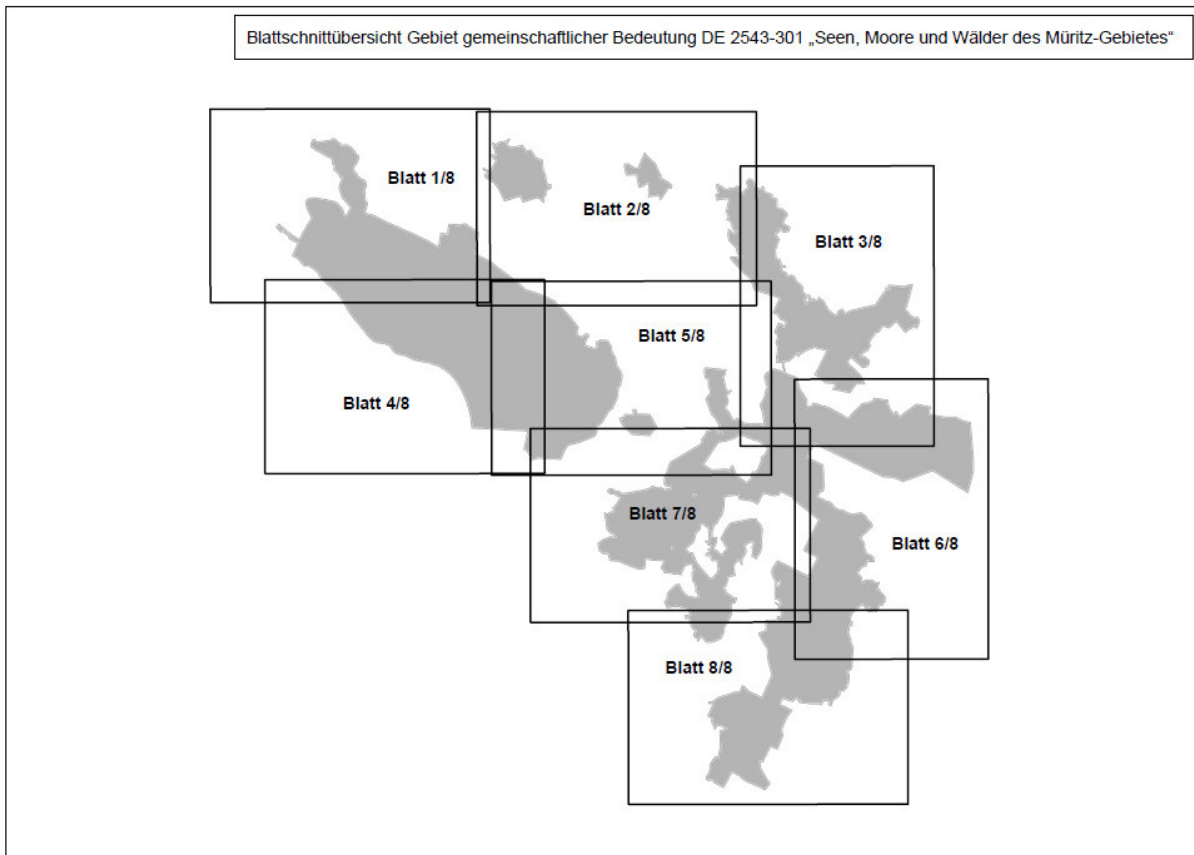
## Detailübersichtskarten des GGB DE 2542-302 „Müritz“

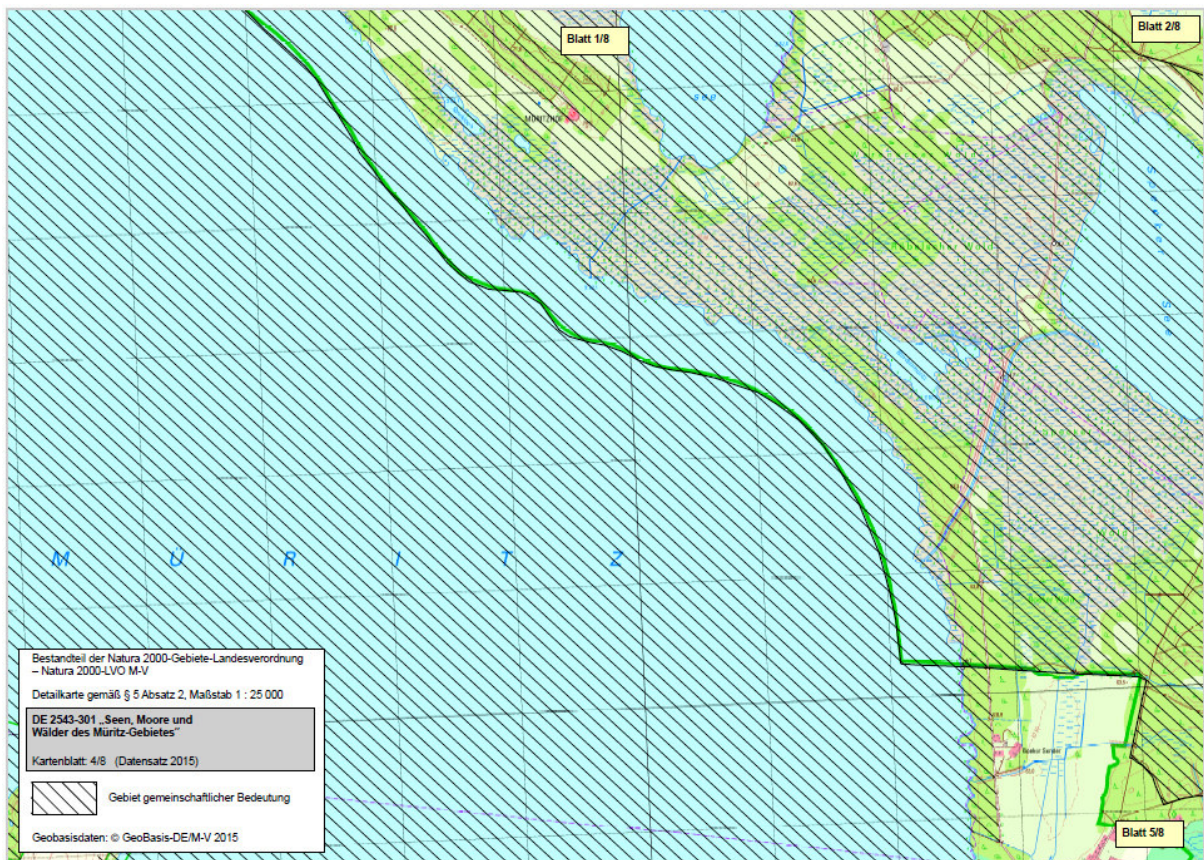
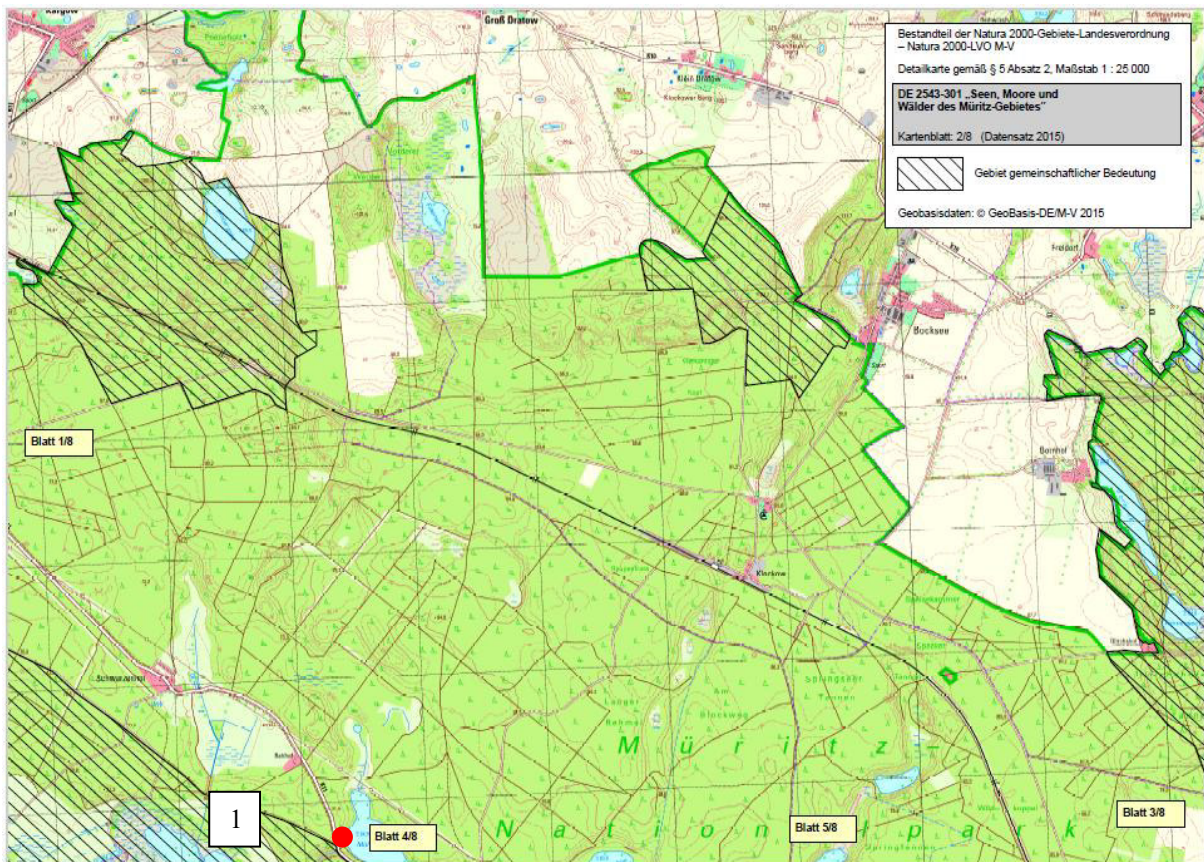


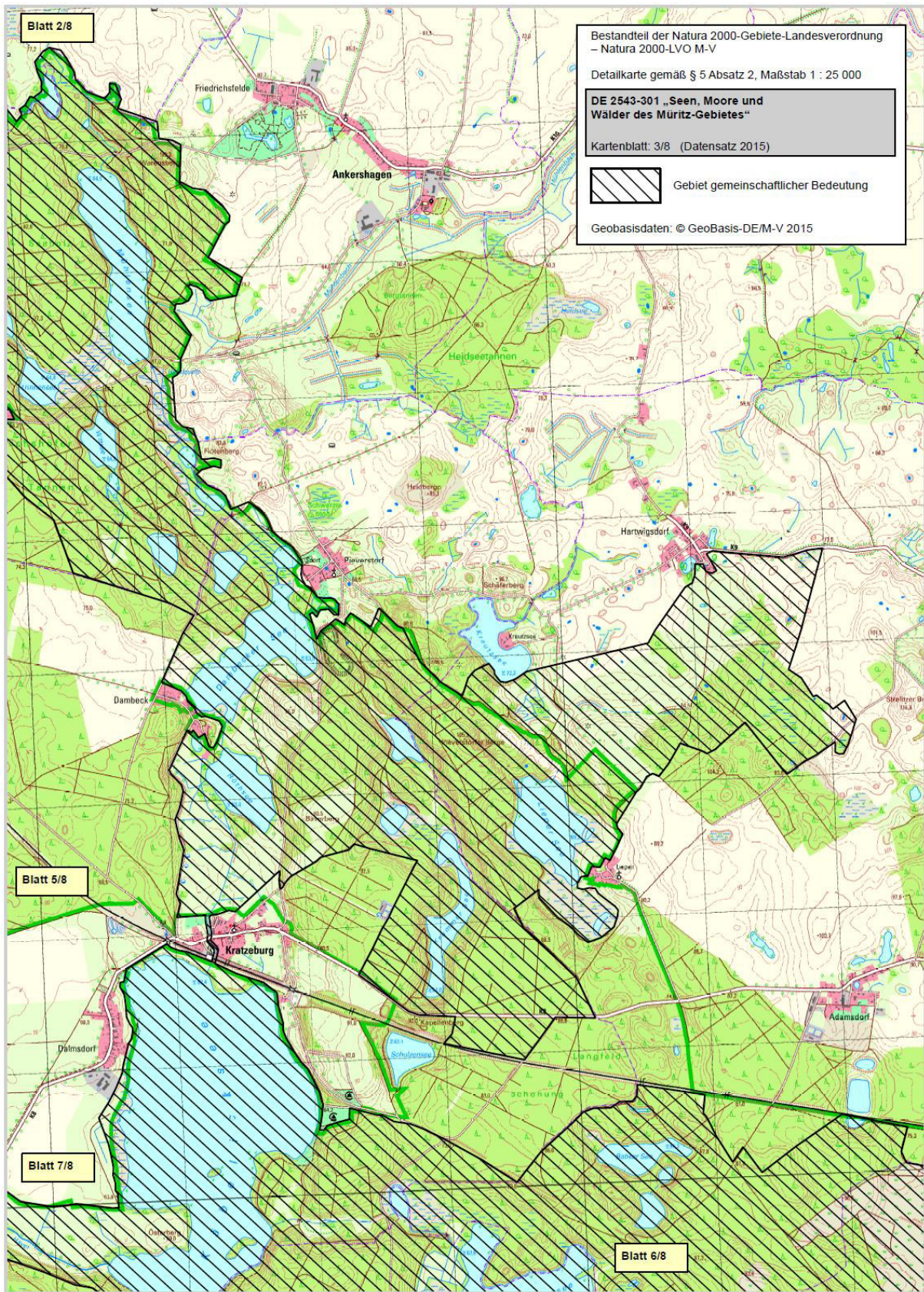


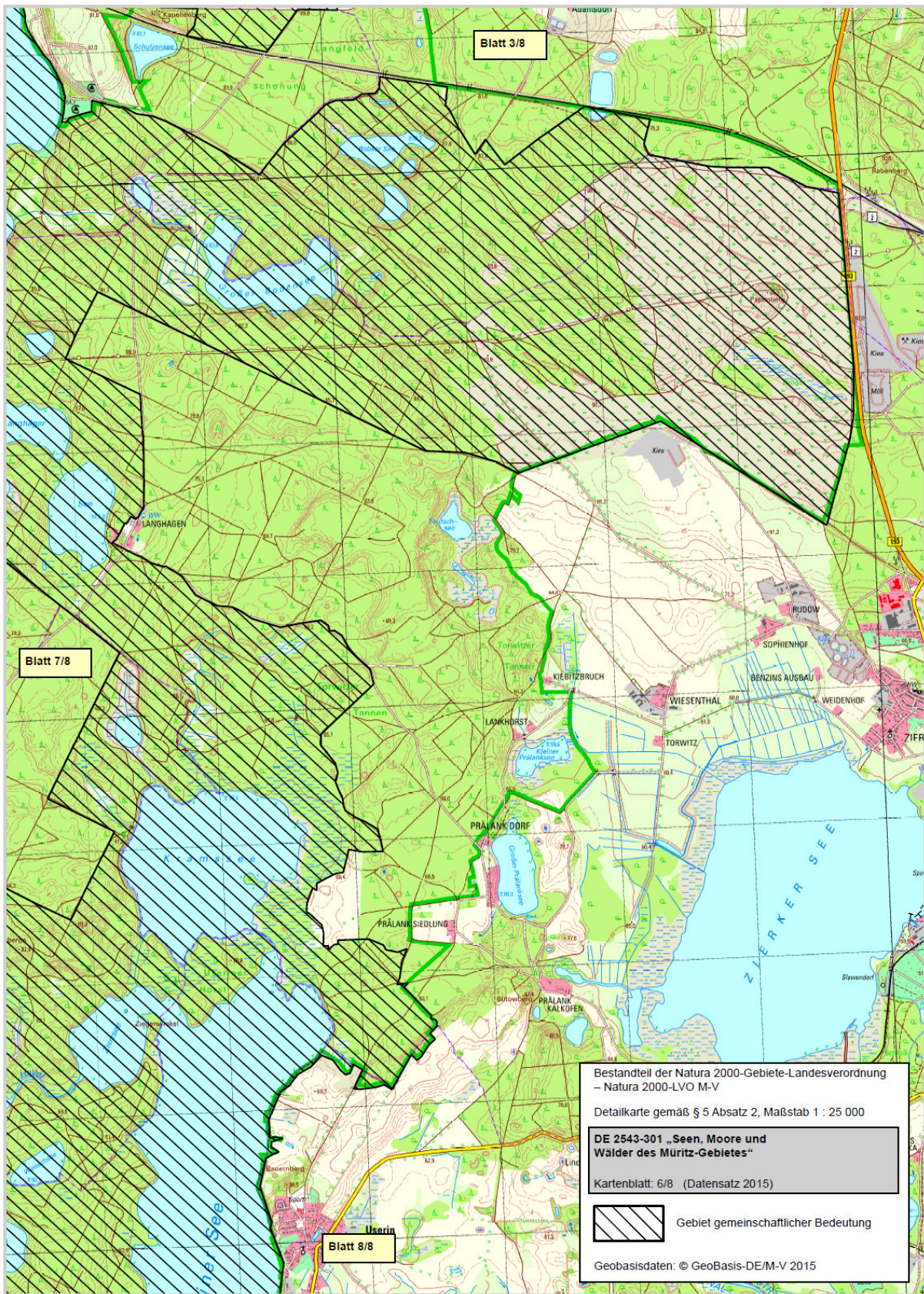


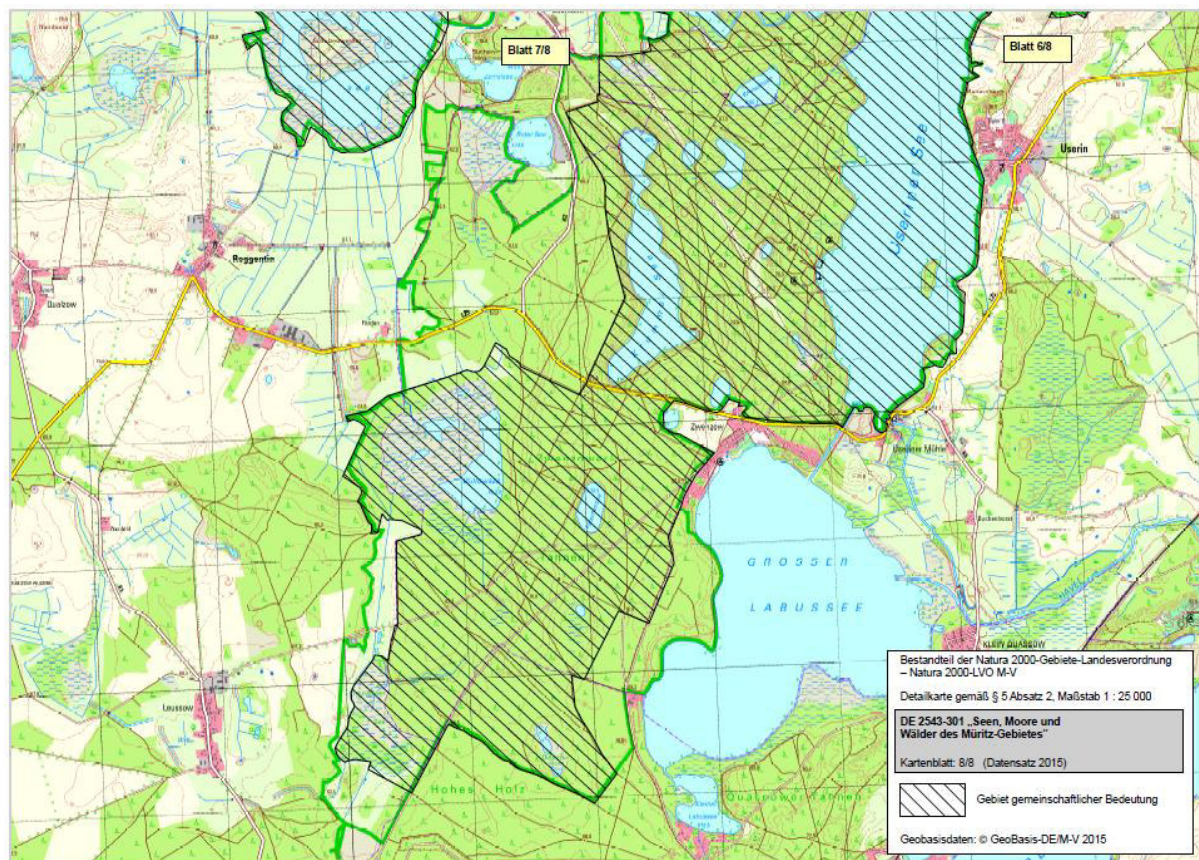
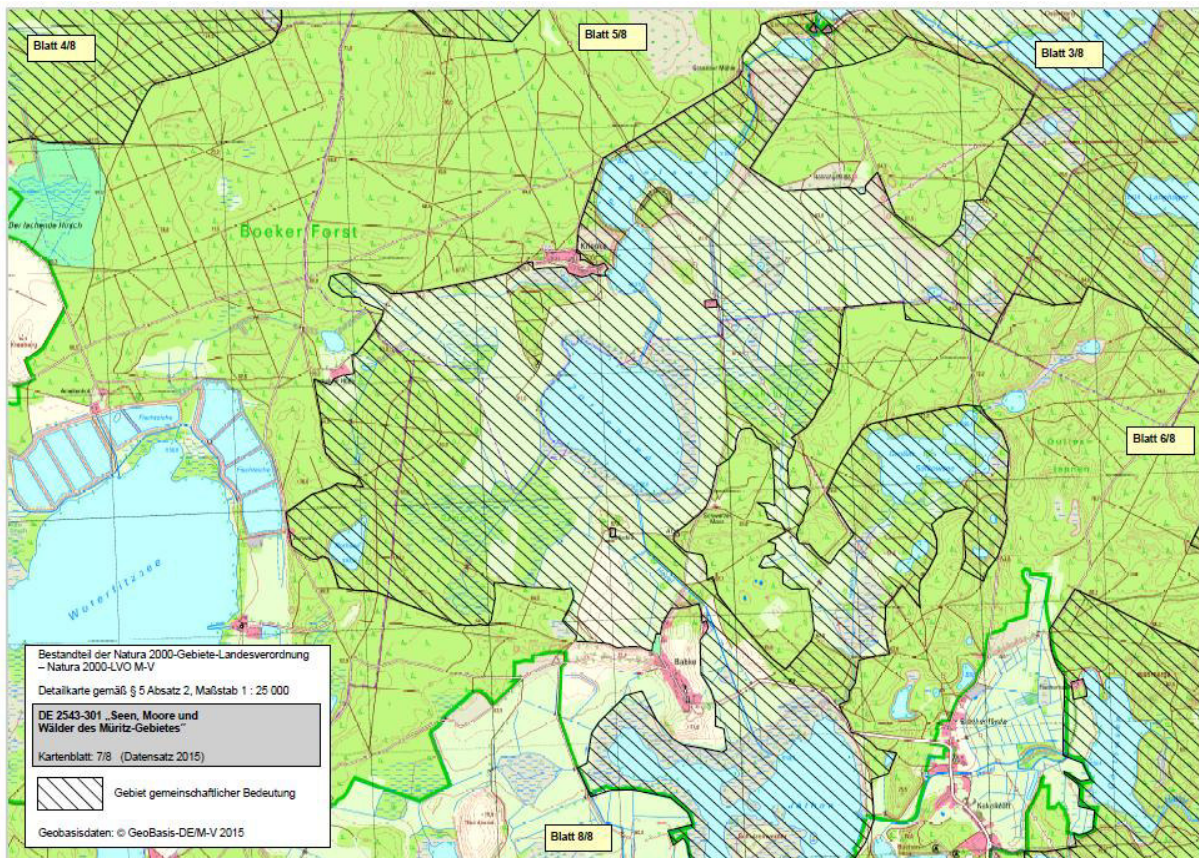
## Detailübersichtskarten des GGB DE 2543-301 „Seen, Moore und Wälder des Müritz-Gebietes“

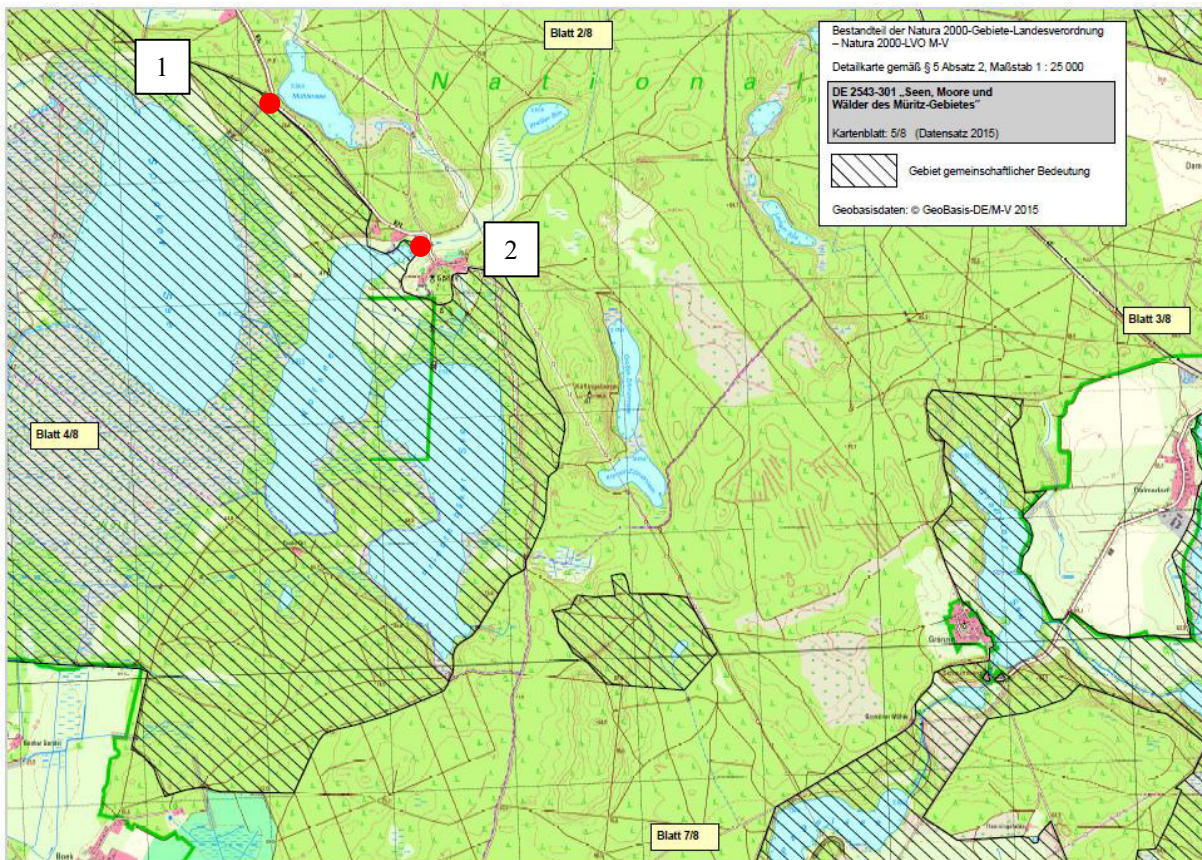




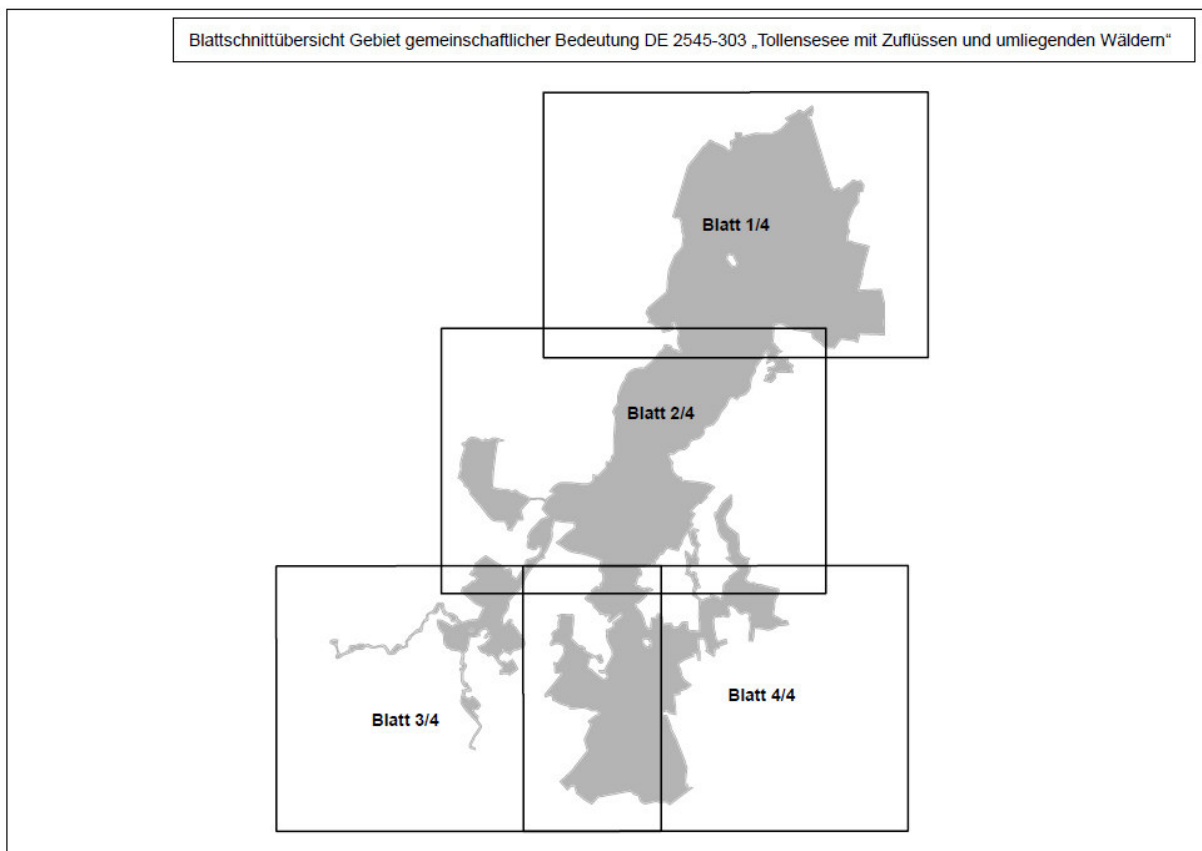


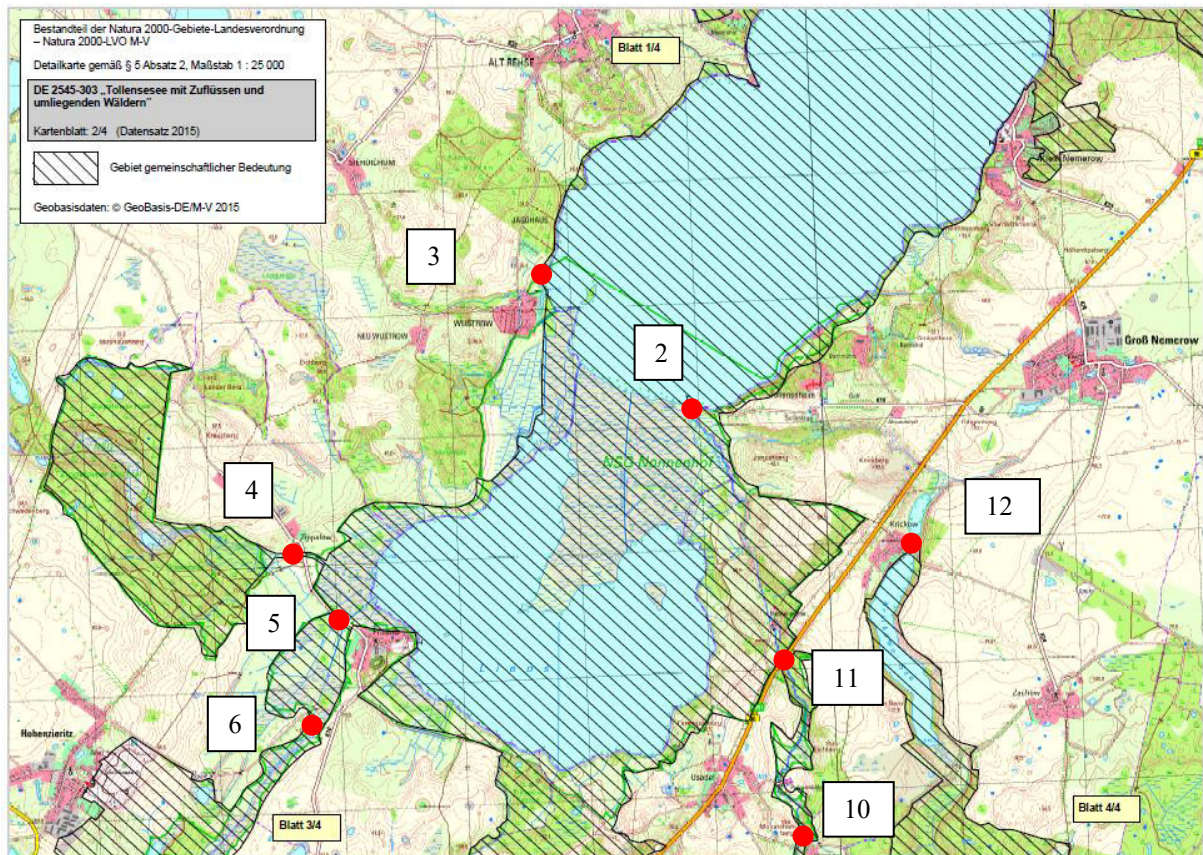
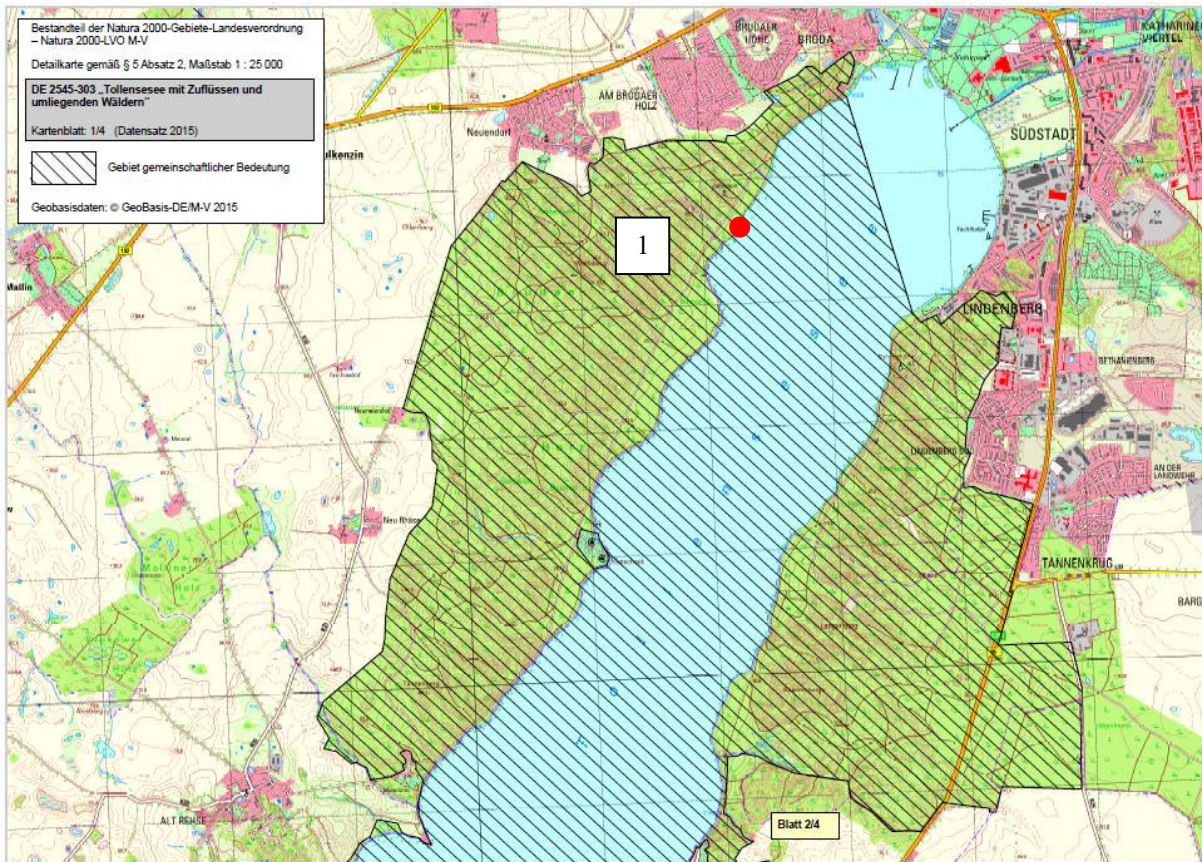




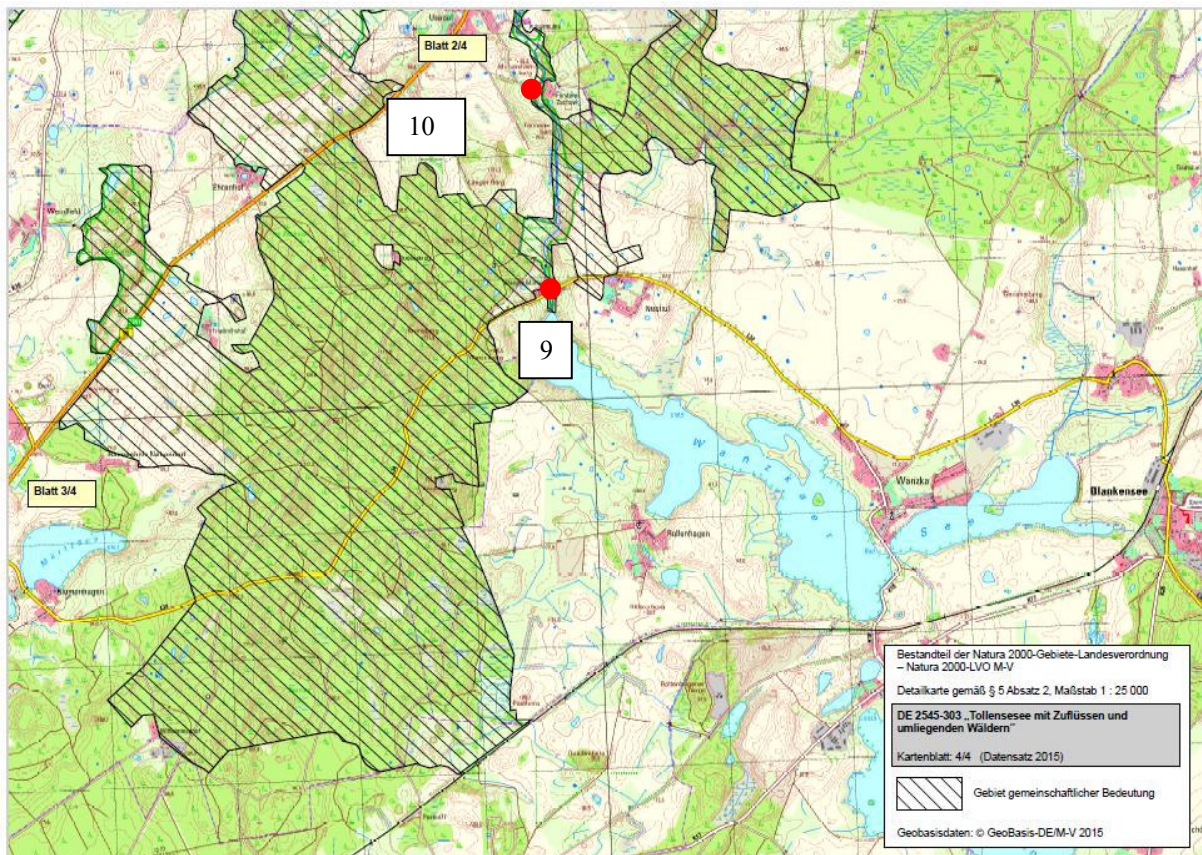
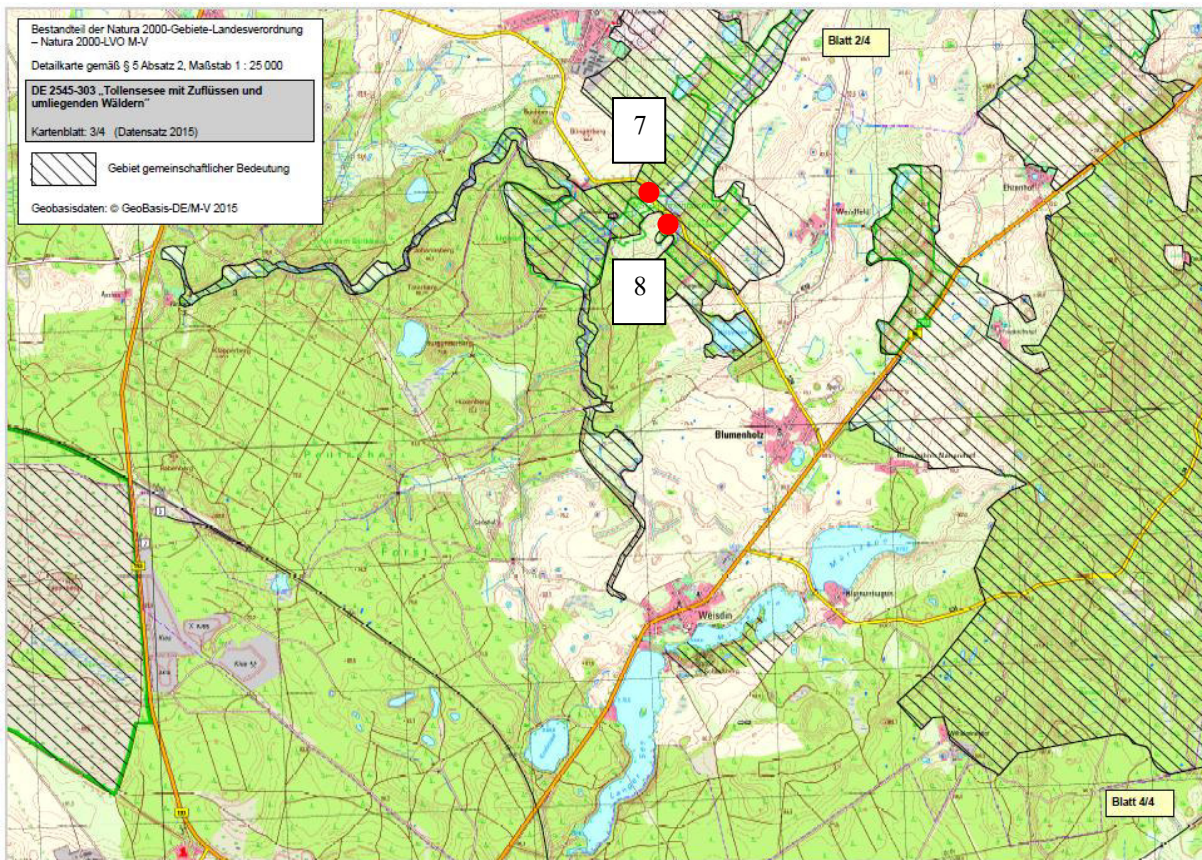


**Detailübersichtskarten des GGB DE 2545-303  
„Tollensee mit Zuflüssen und umliegenden Wäldern“**

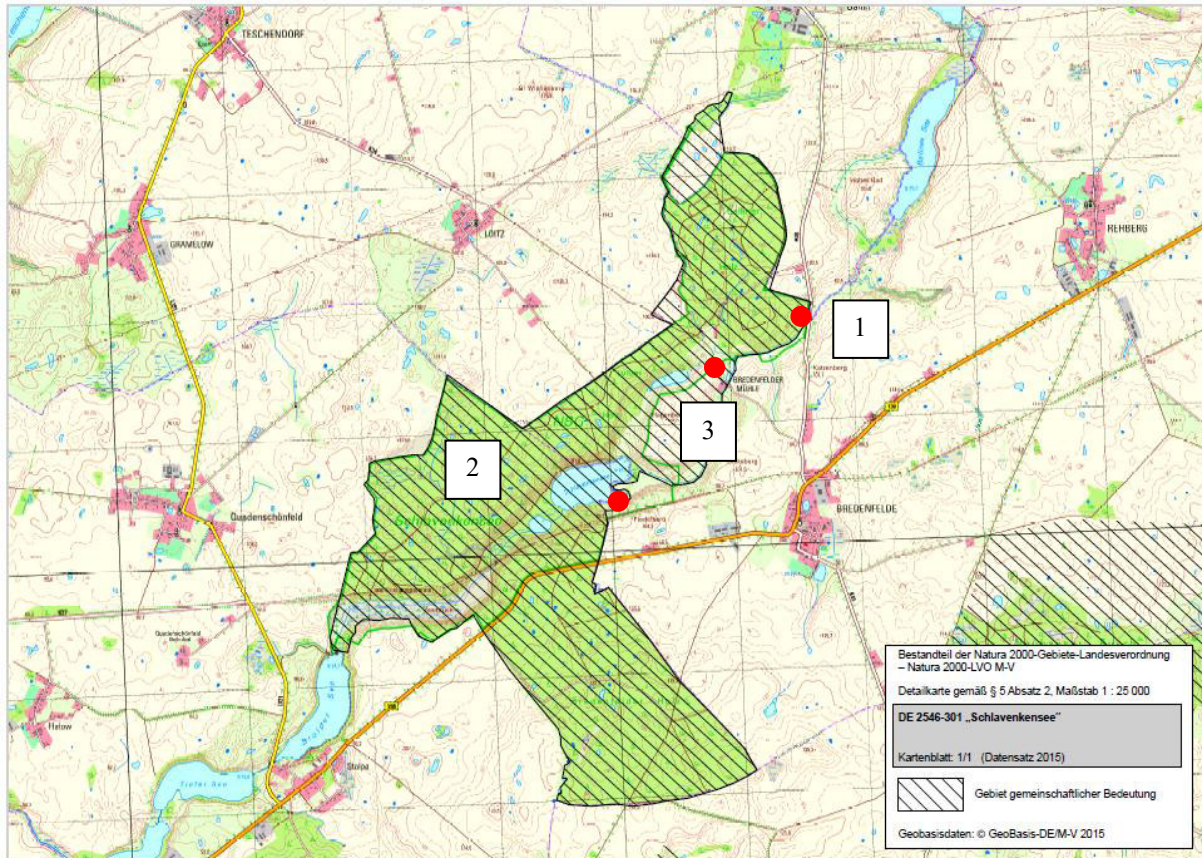




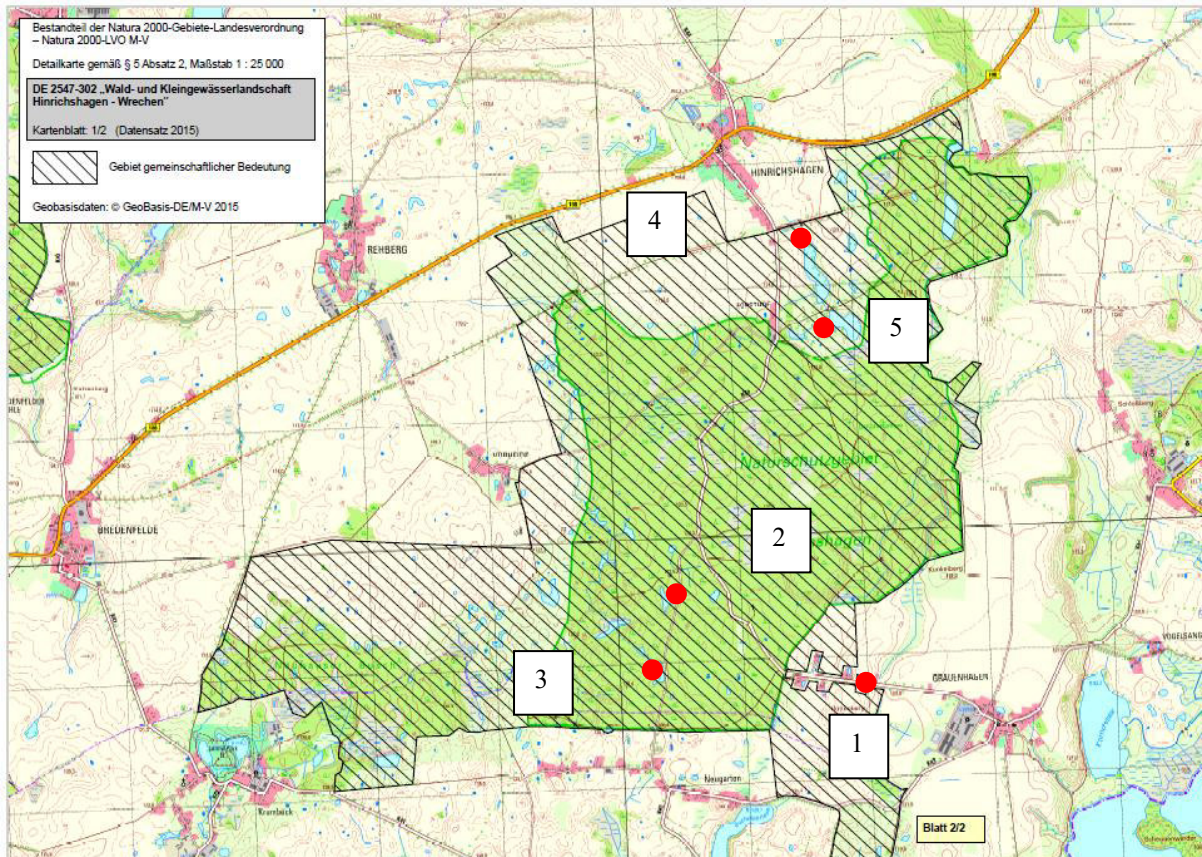


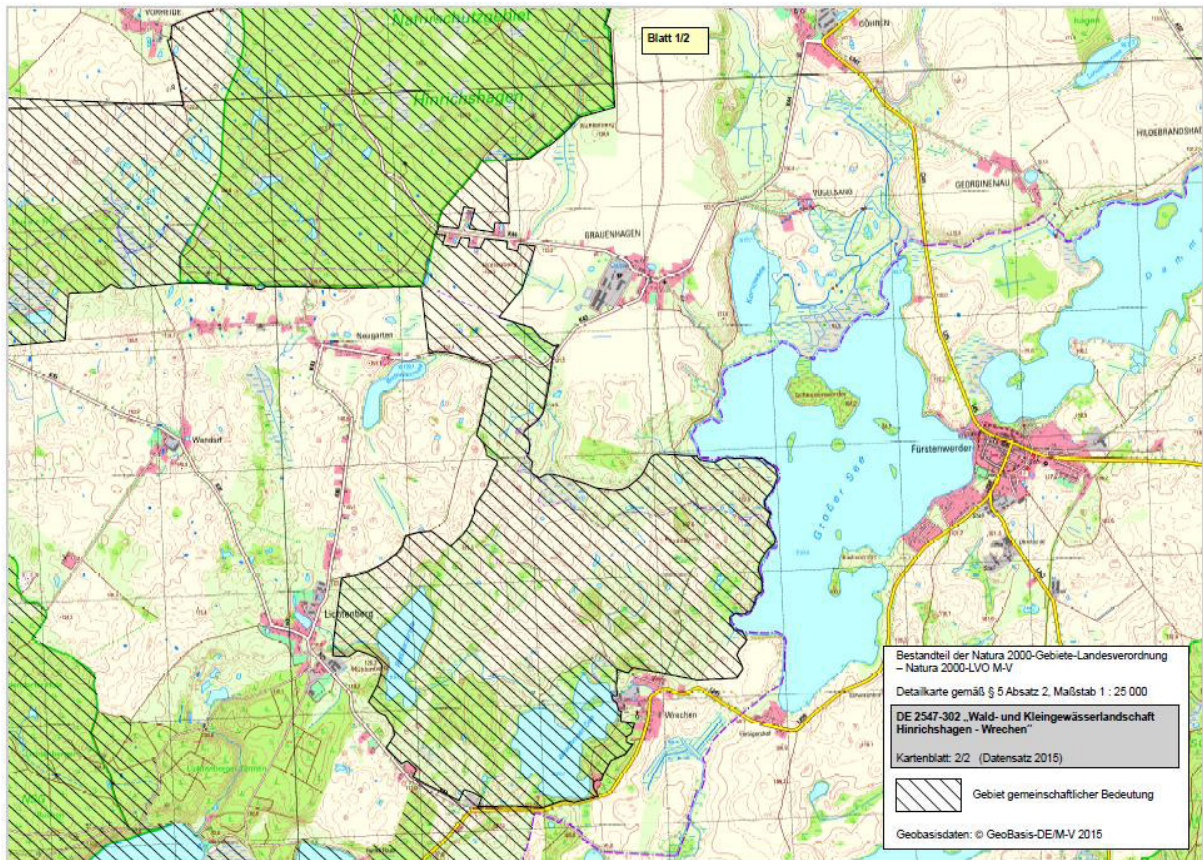


**Detailübersichtskarten des GGB DE 2546-301 „Schlavenkensee“**

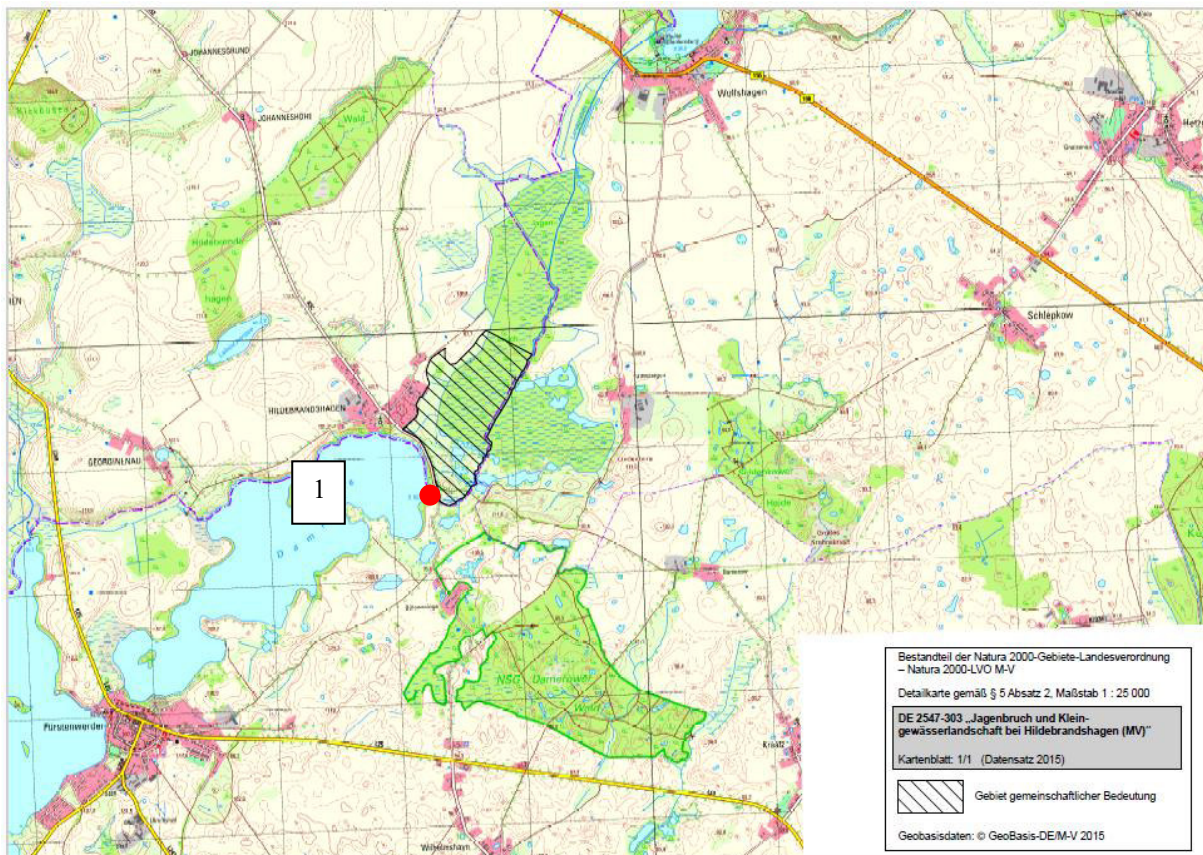


**Detailübersichtskarten des GGB DE 2547-302  
„Wald- und Kleingewässerlandschaft Hinrichshagen – Wrechen“**

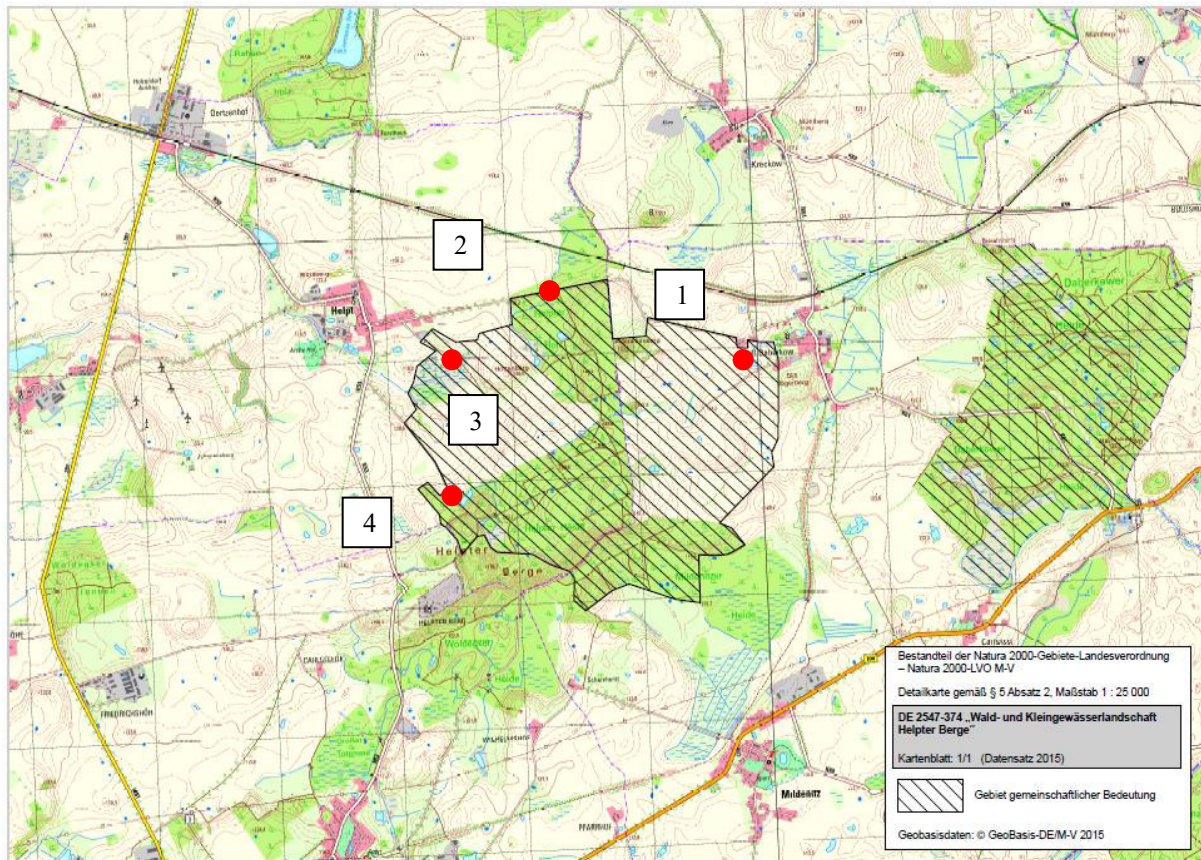




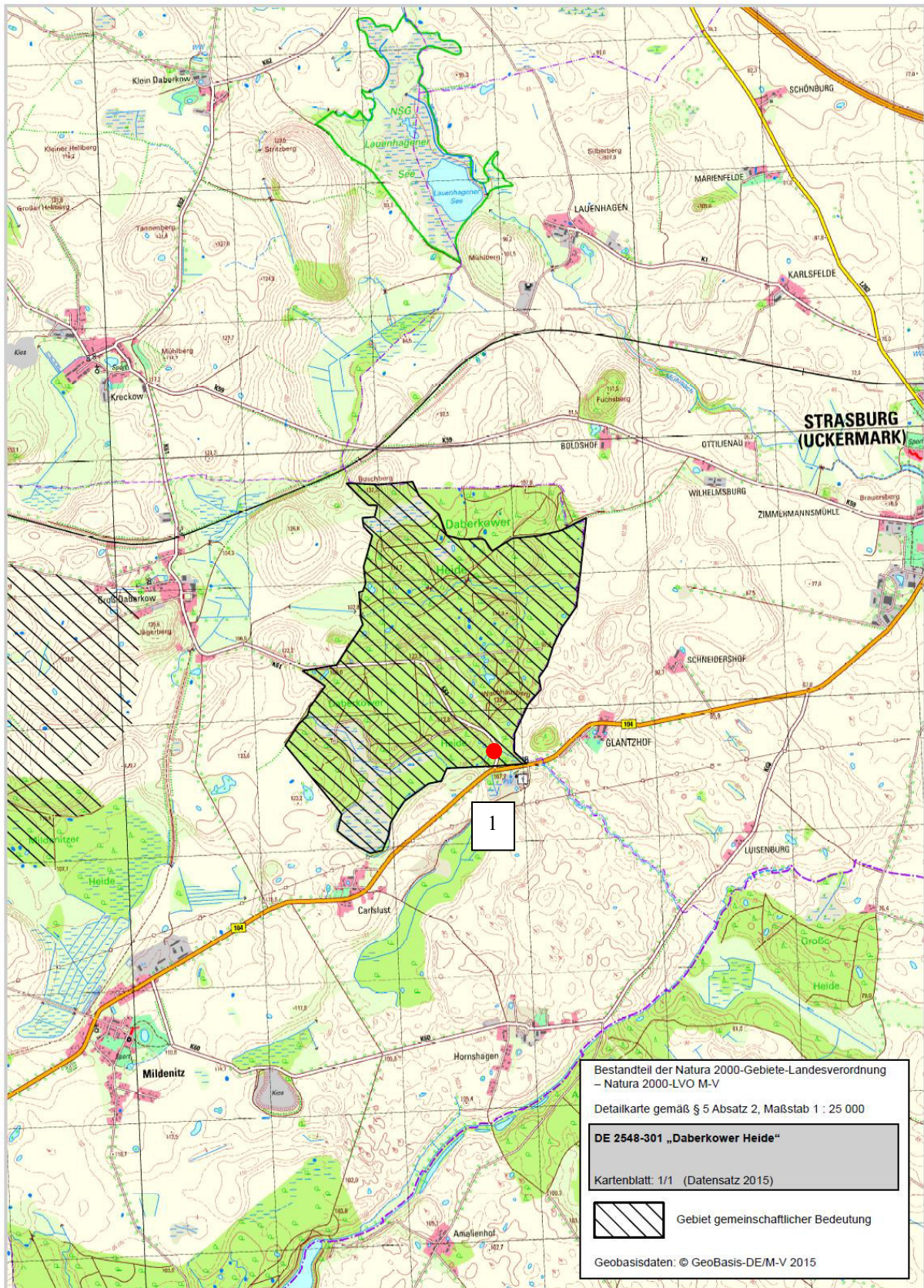
**Detailübersichtskarten des GGB DE 2547-303  
„Jagenbruch und Kleingewässerlandschaft Hildebrandshagen (MV)“**




**Detailübersichtskarten des GGB DE 2547-374**  
**„Wald- und Kleingewässerlandschaft Helpter Berge“**



**Detailübersichtskarten des GGB DE 2548-301 „Daberkower Heide“**

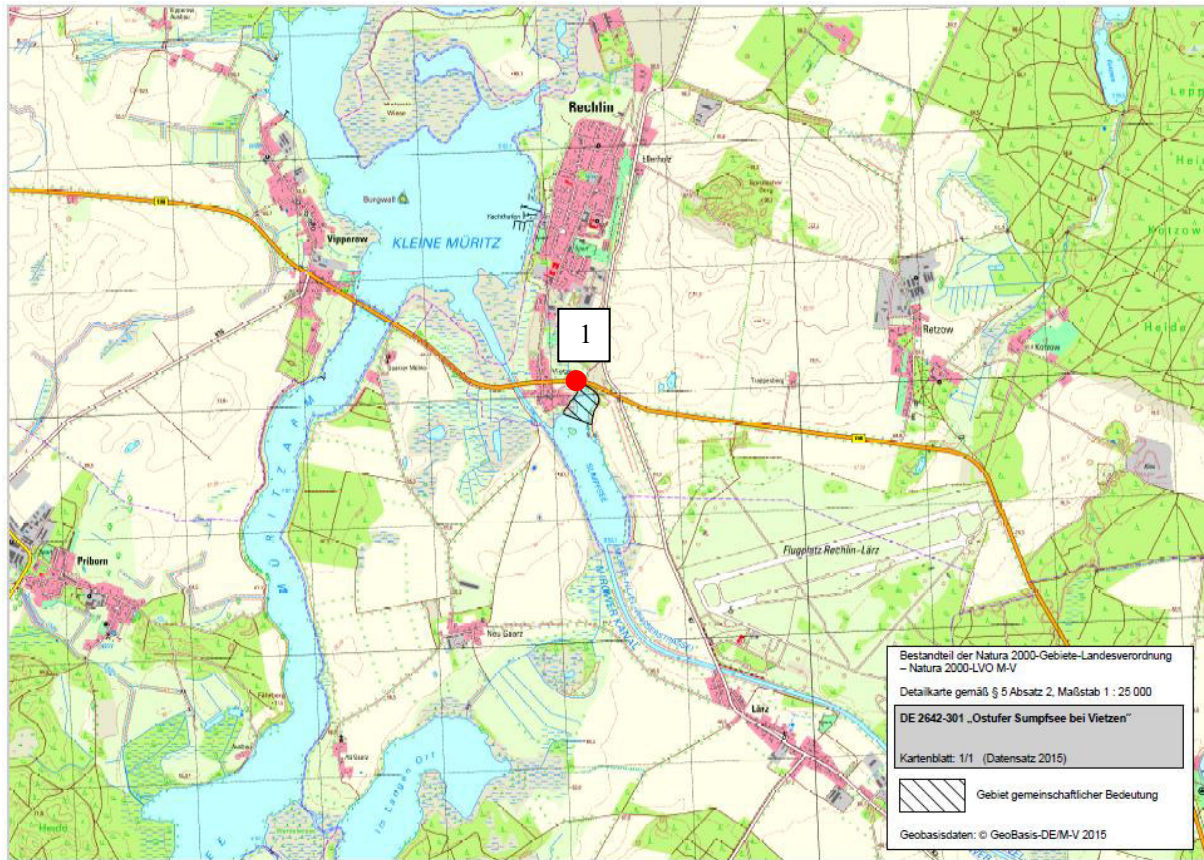


Bestandteil der Natura 2000-Gebiete-Landesverordnung  
 – Natura 2000-LVO M-V  
 Detailkarte gemäß § 5 Absatz 2, Maßstab 1 : 25 000  
**DE 2548-301 „Daberkower Heide“**  
 Kartenblatt: 1/1 (Datensatz 2015)

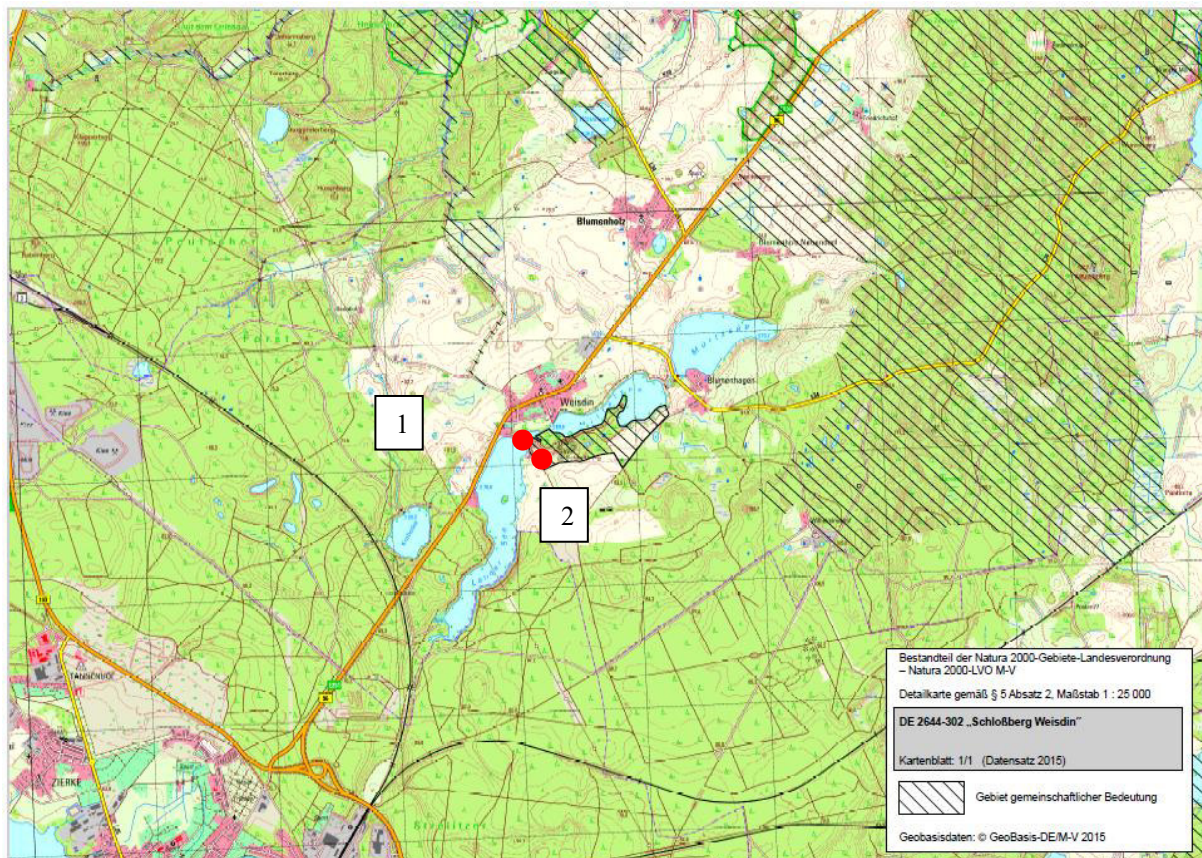
 Gebiet gemeinschaftlicher Bedeutung

Geobasisdaten: © GeoBasis-DE/M-V 2015

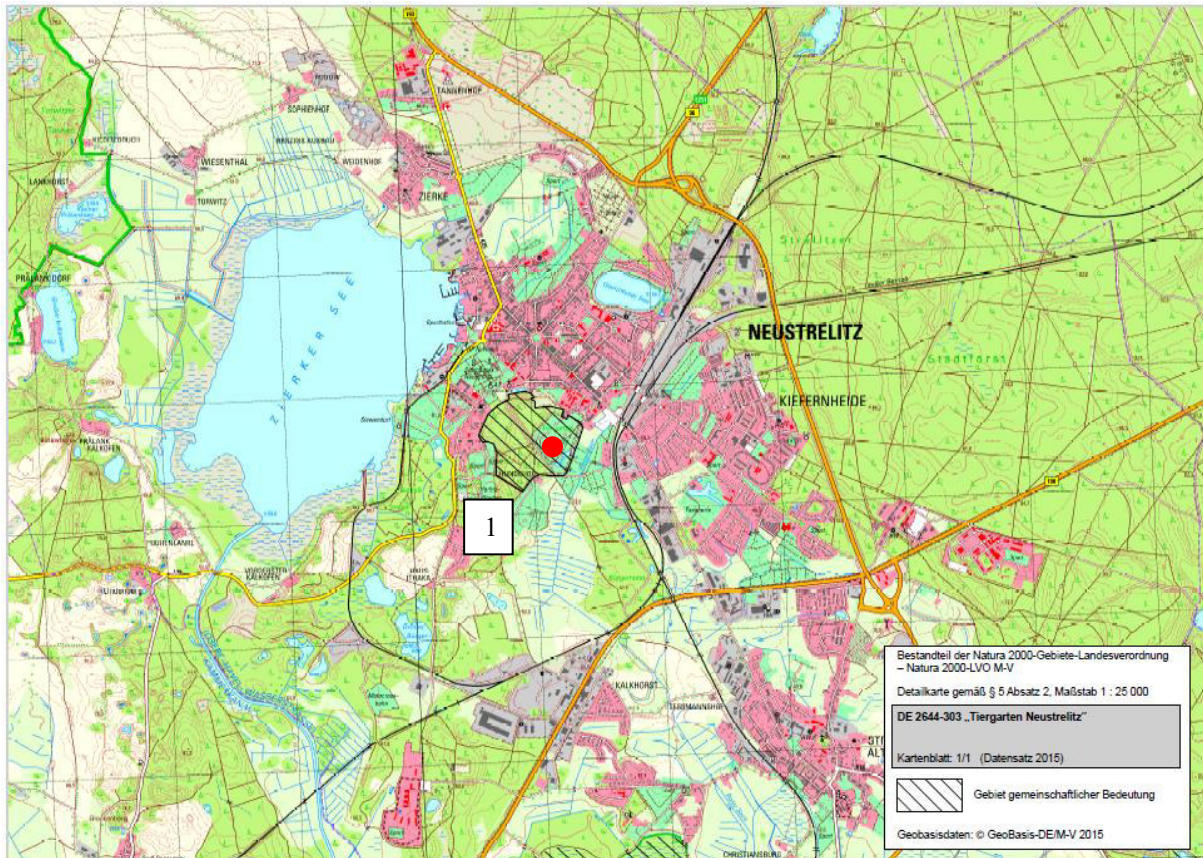
**Detailübersichtskarten des GGB DE 2642-301 „Ostufersumpfsee bei Vietzen“**



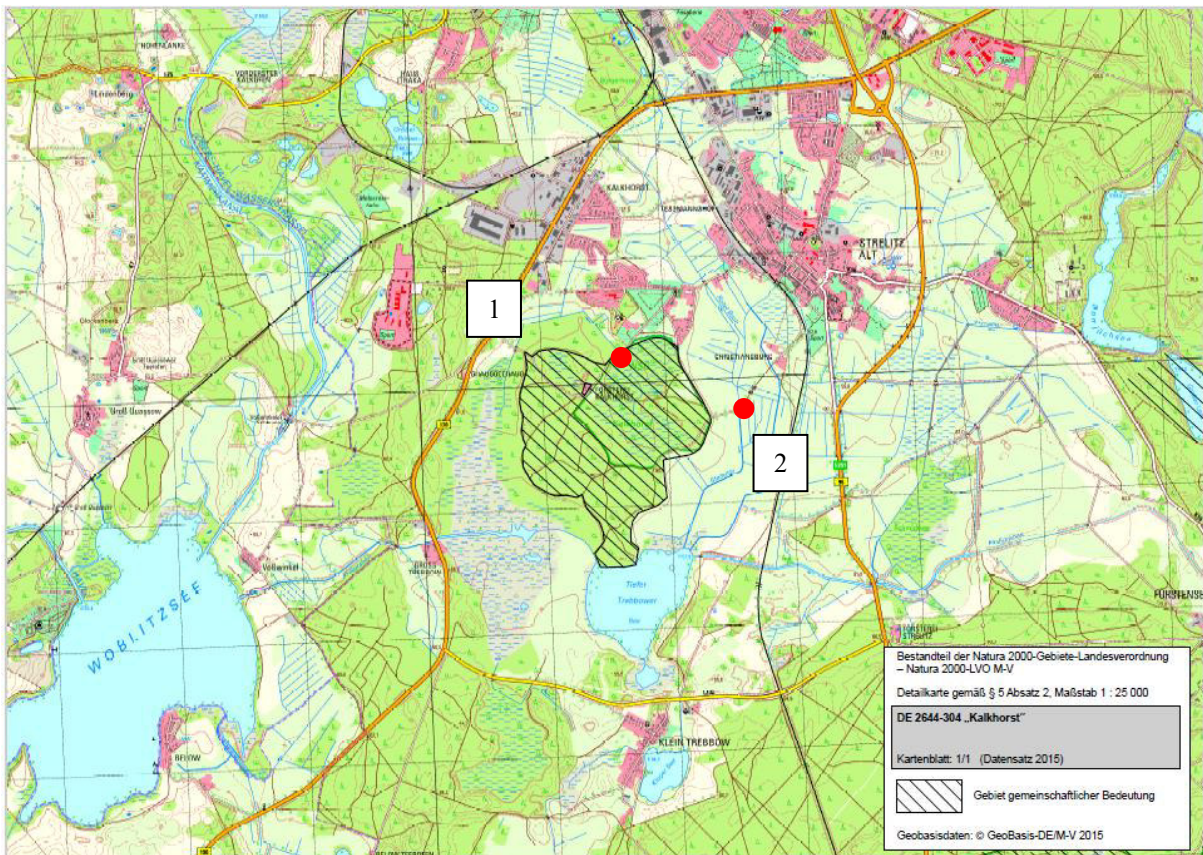
**Detailübersichtskarten des GGB DE 2644-302 „Schloßberg Weisdin“**



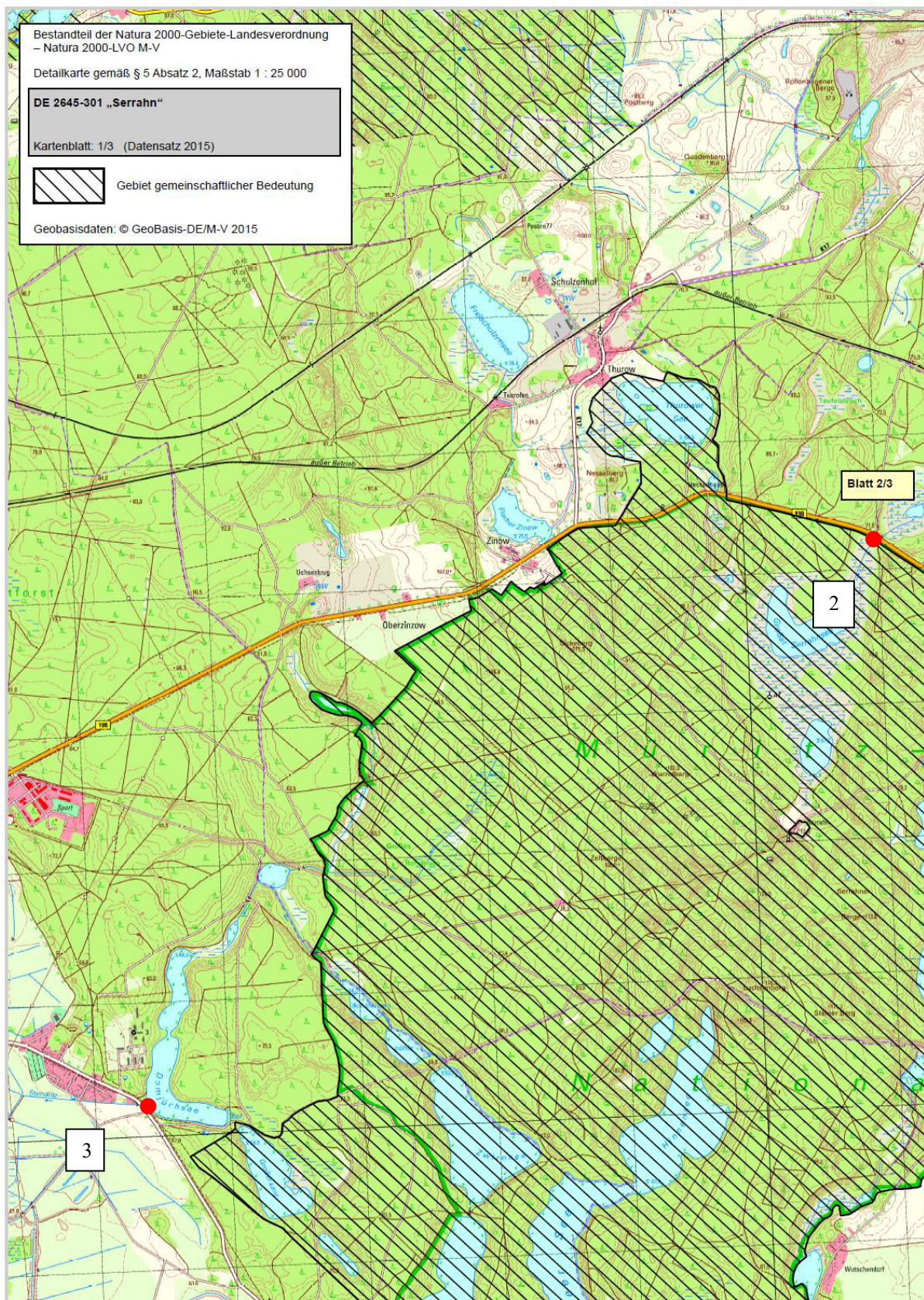
## Detailübersichtskarten des GGB DE 2644-303 „Tiergarten Neustrelitz“



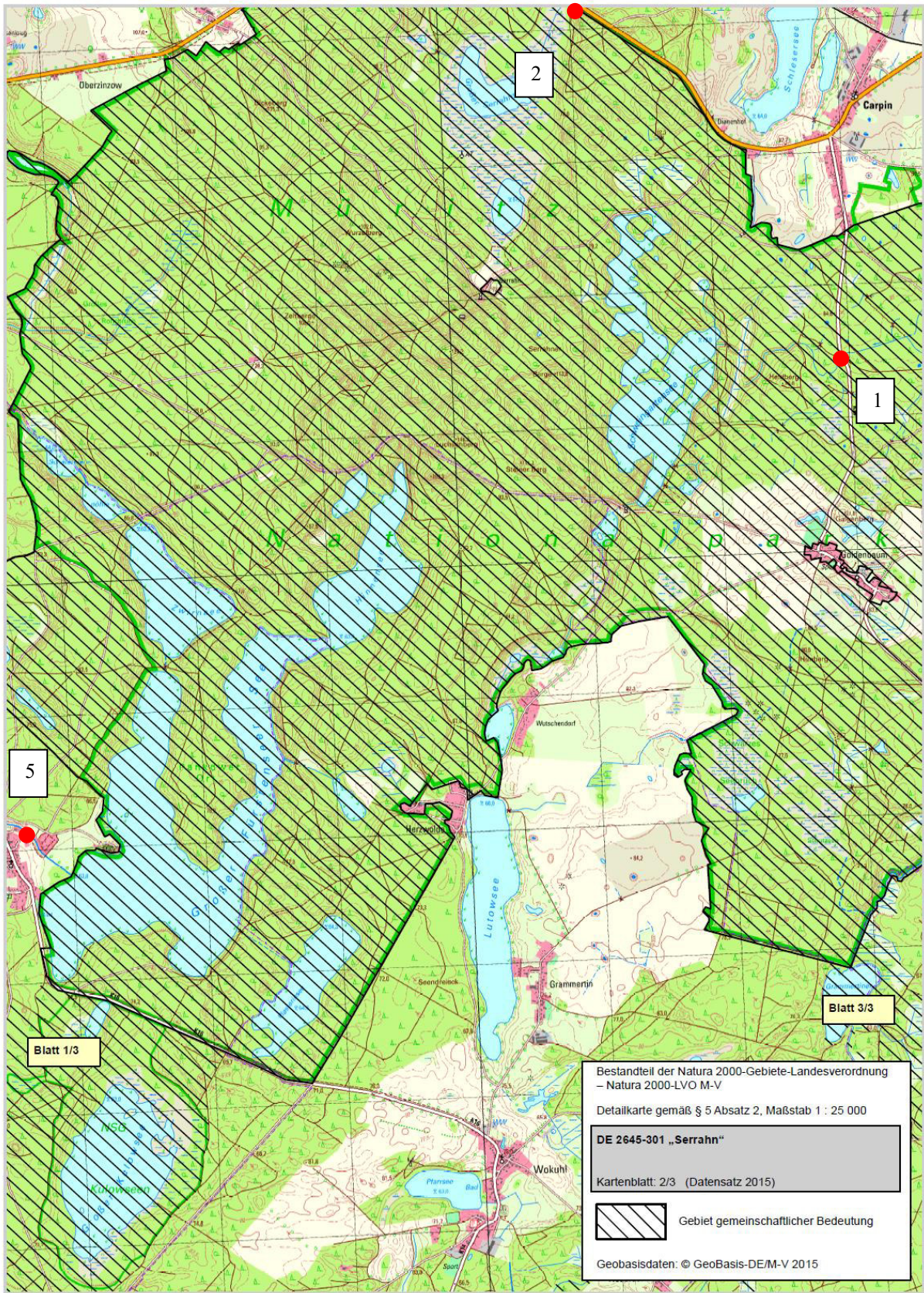
## Detailübersichtskarten des GGB DE 2644-304 „Kalkhorst“

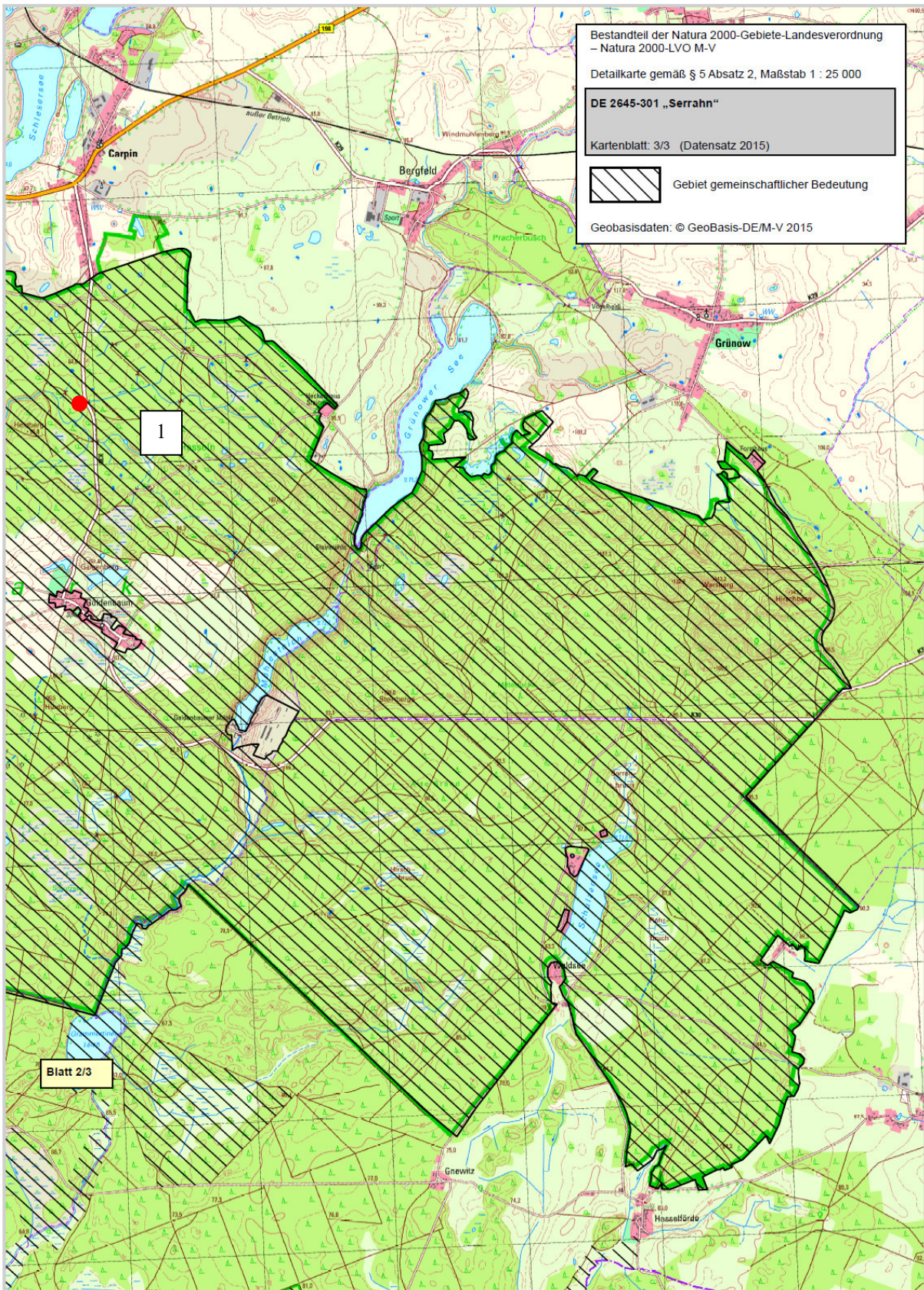


## Detailübersichtskarten des GGB DE 2645-301 „Serrahn“

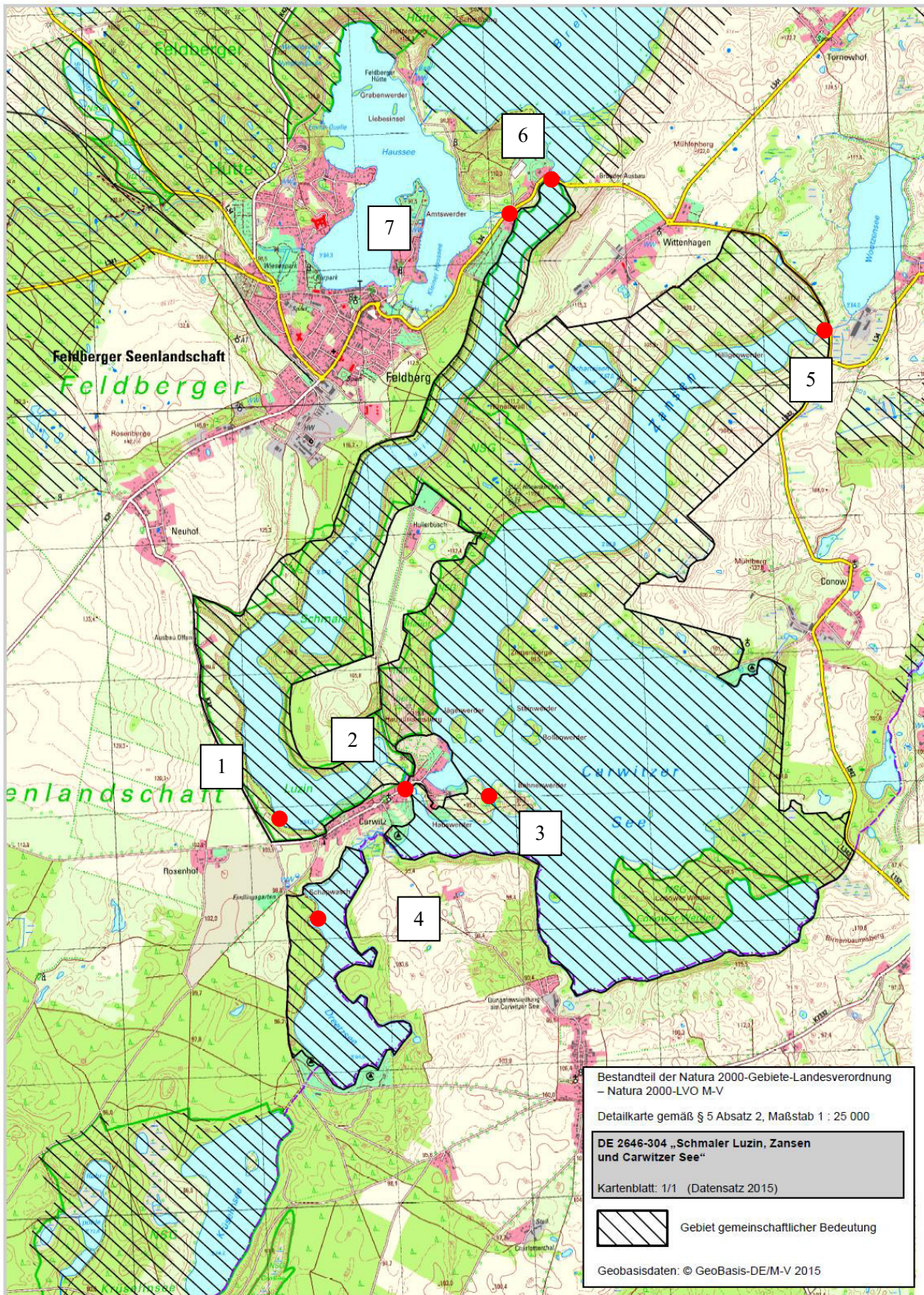




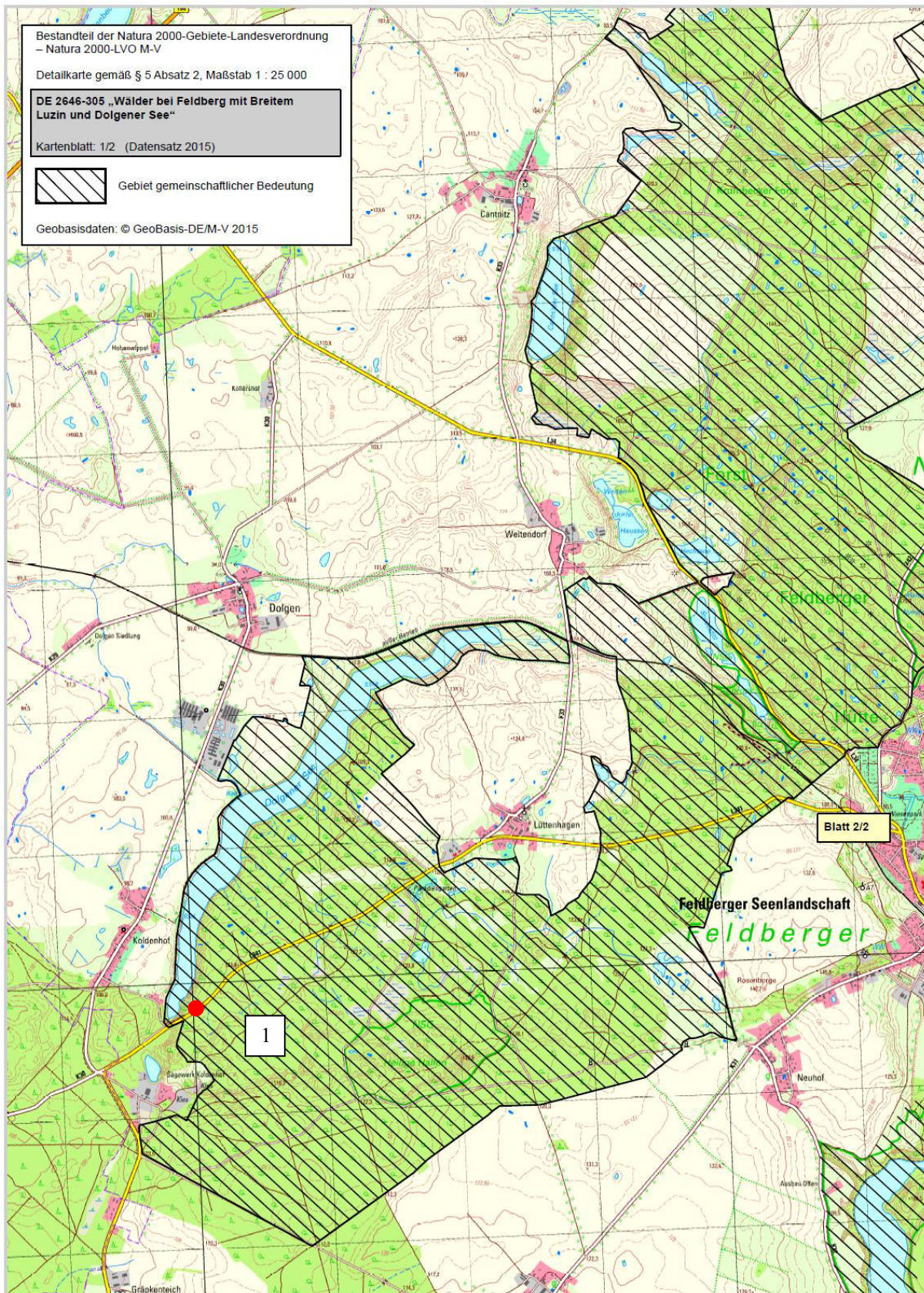


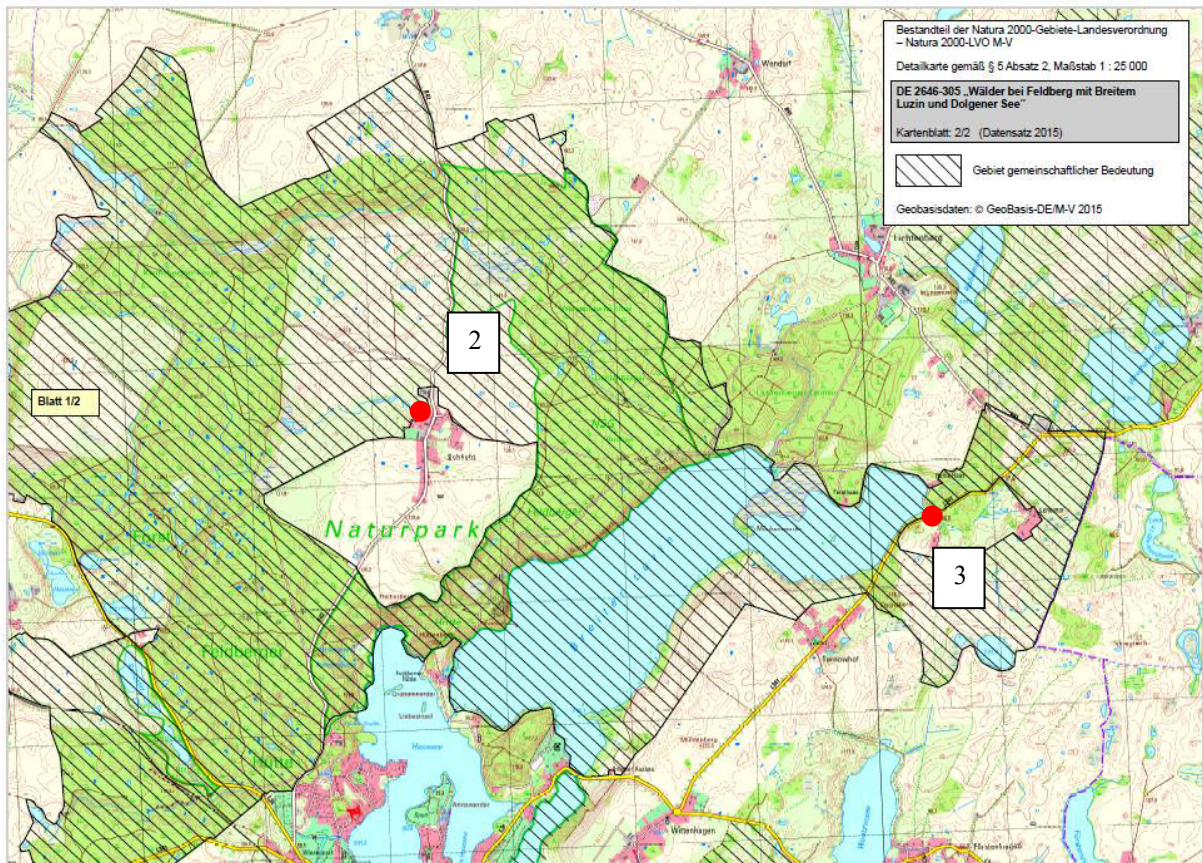


**Detailübersichtskarten des GGB DE 2646-304**  
**„Schmaler Luzin, Zansen und Carwitzer See“**

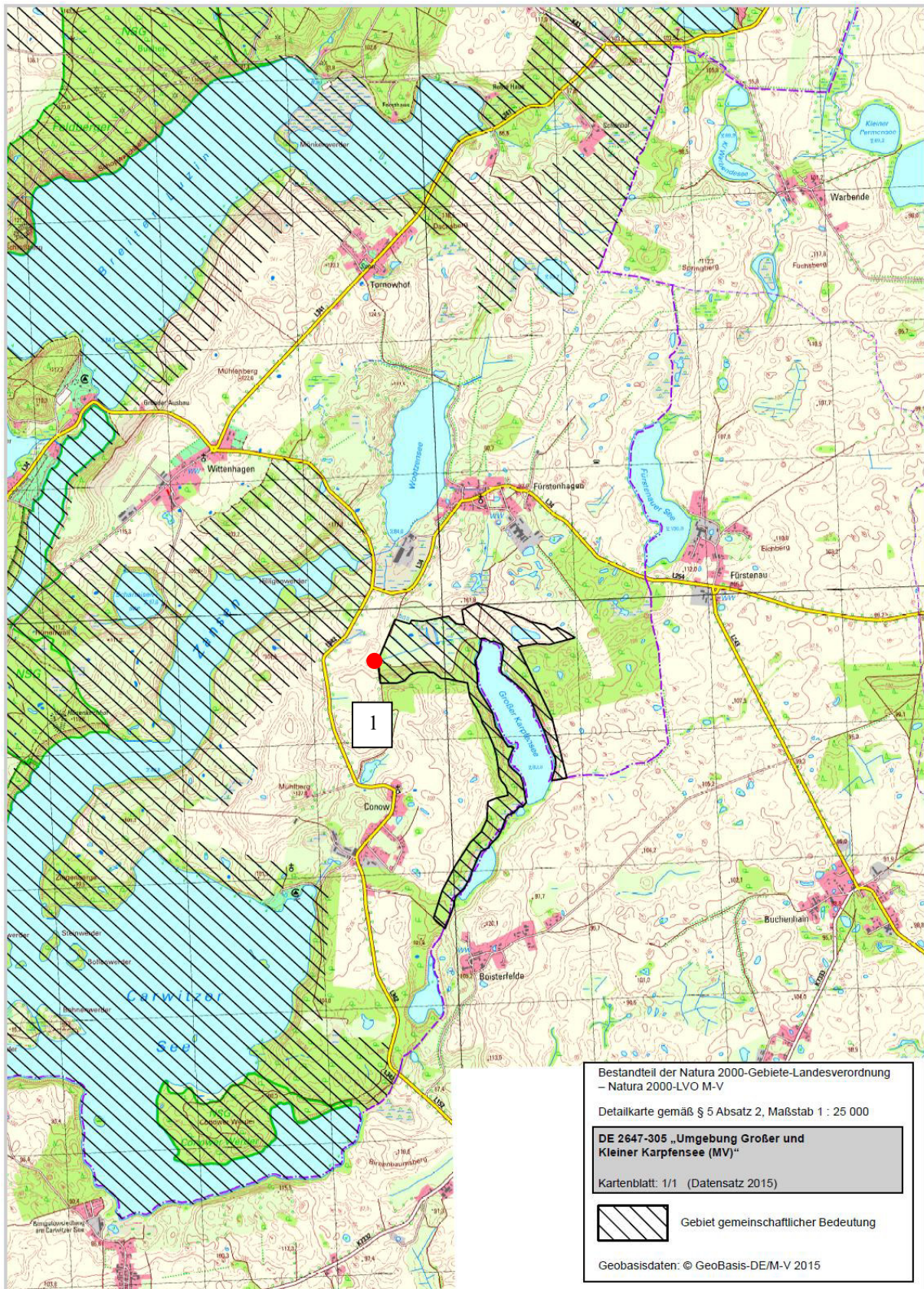


**Detailübersichtskarten des GGB DE 2646-305**  
**„Wälder bei Feldberg mit Breitem Luzin und Dolgener See“**

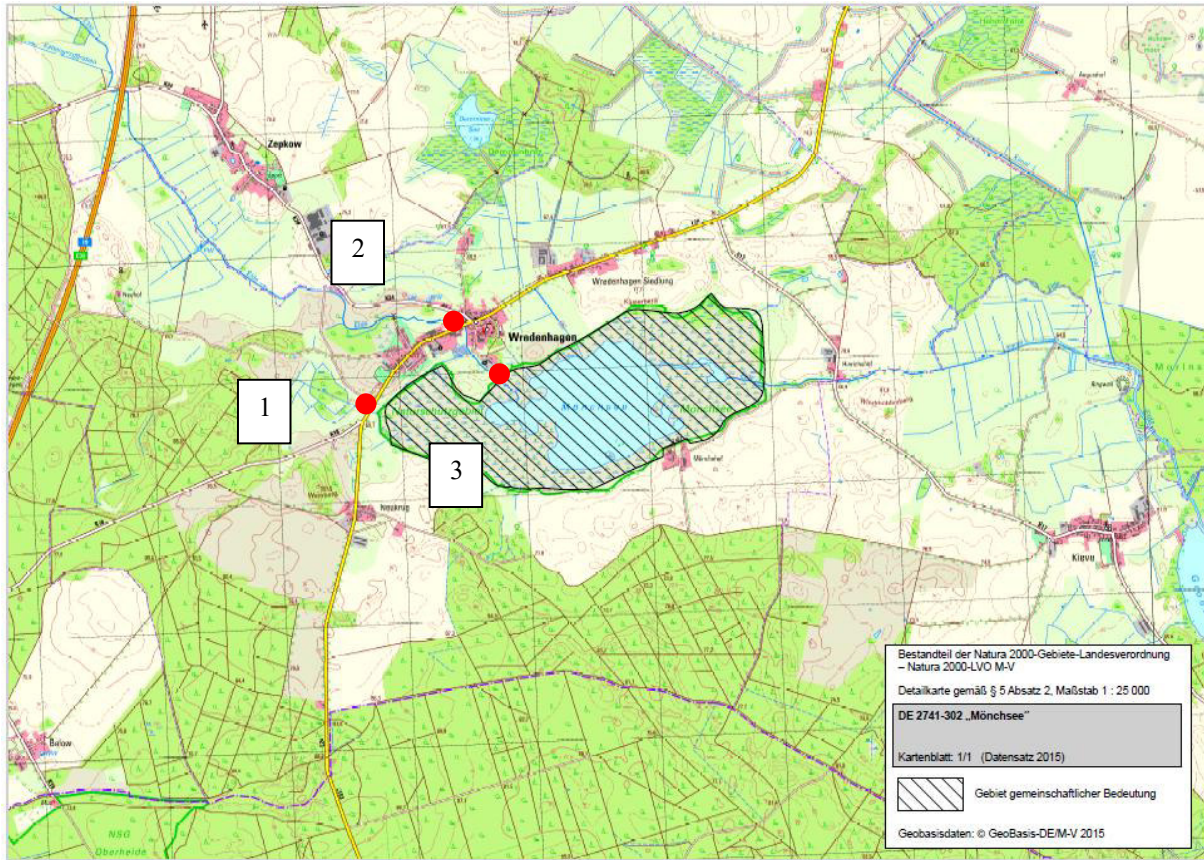




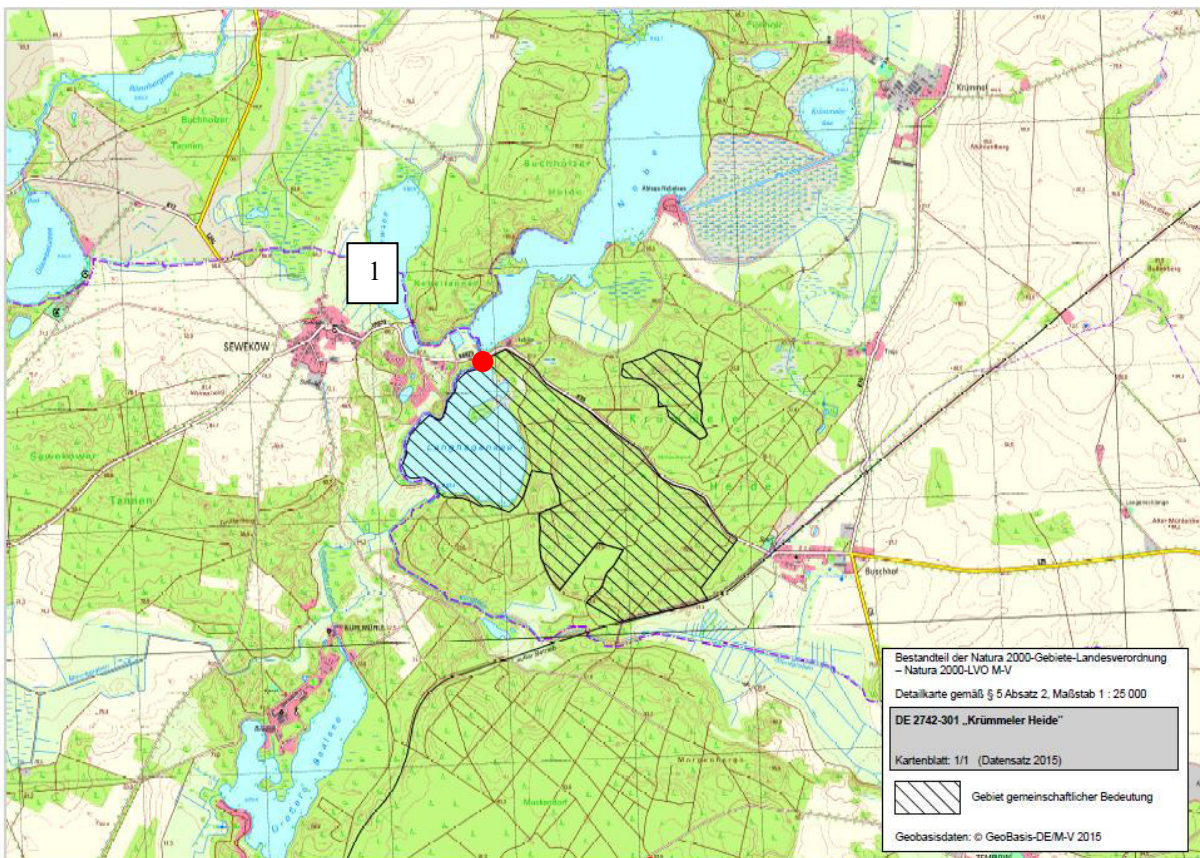
**Detailübersichtskarten des GGB DE 2647-305**  
**„Umgebung Großer und Kleiner Karpfensee“**



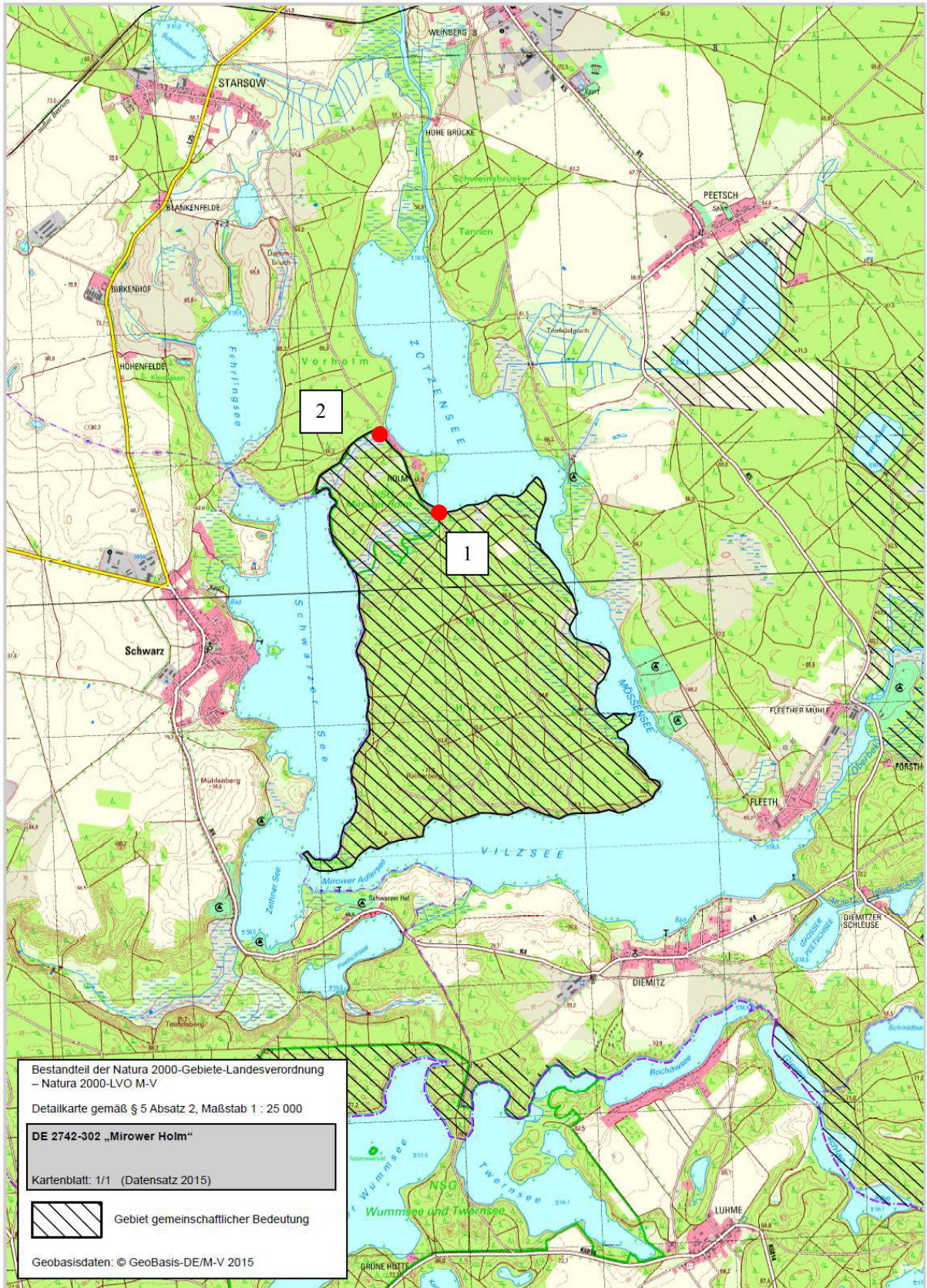
**Detailübersichtskarten des GGB DE 2741-302 „Mönchsee“**



**Detailübersichtskarten des GGB DE 2742-301 „Krümmeler Heide“**

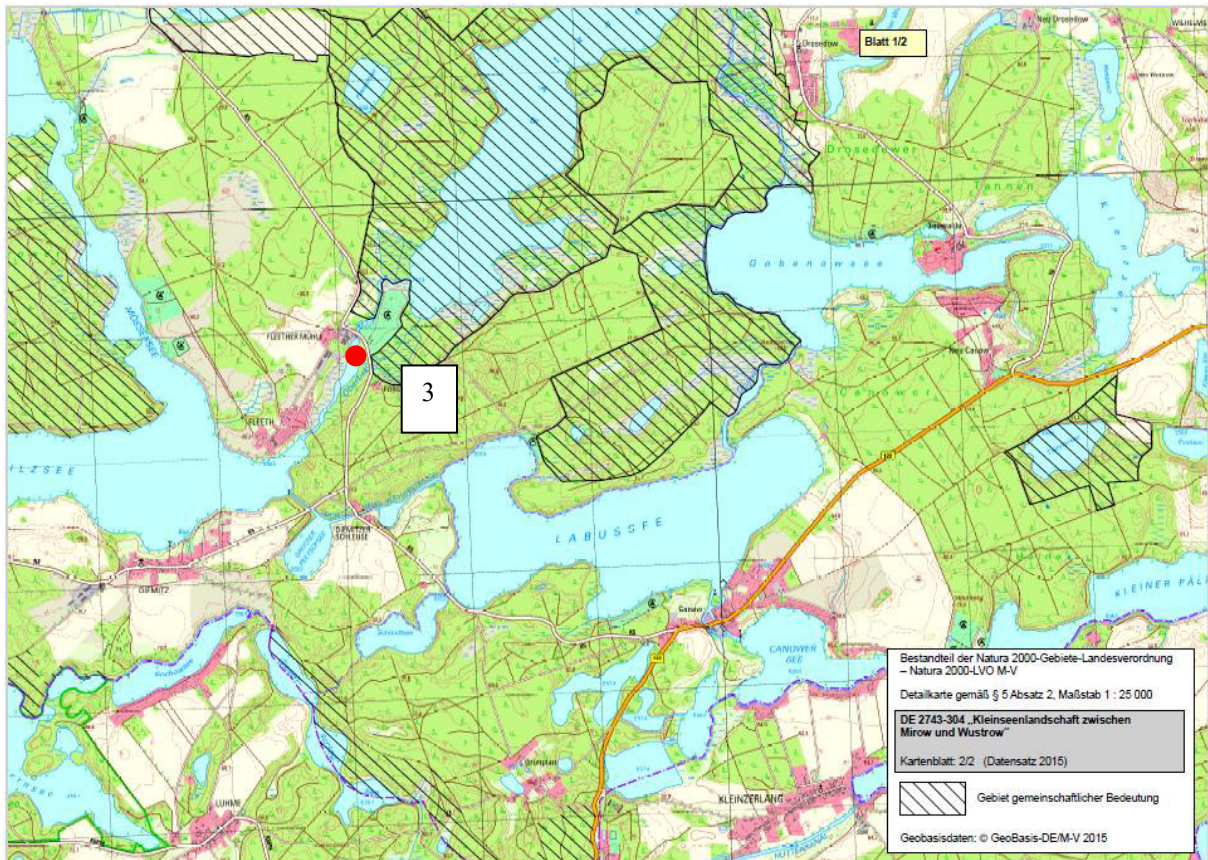
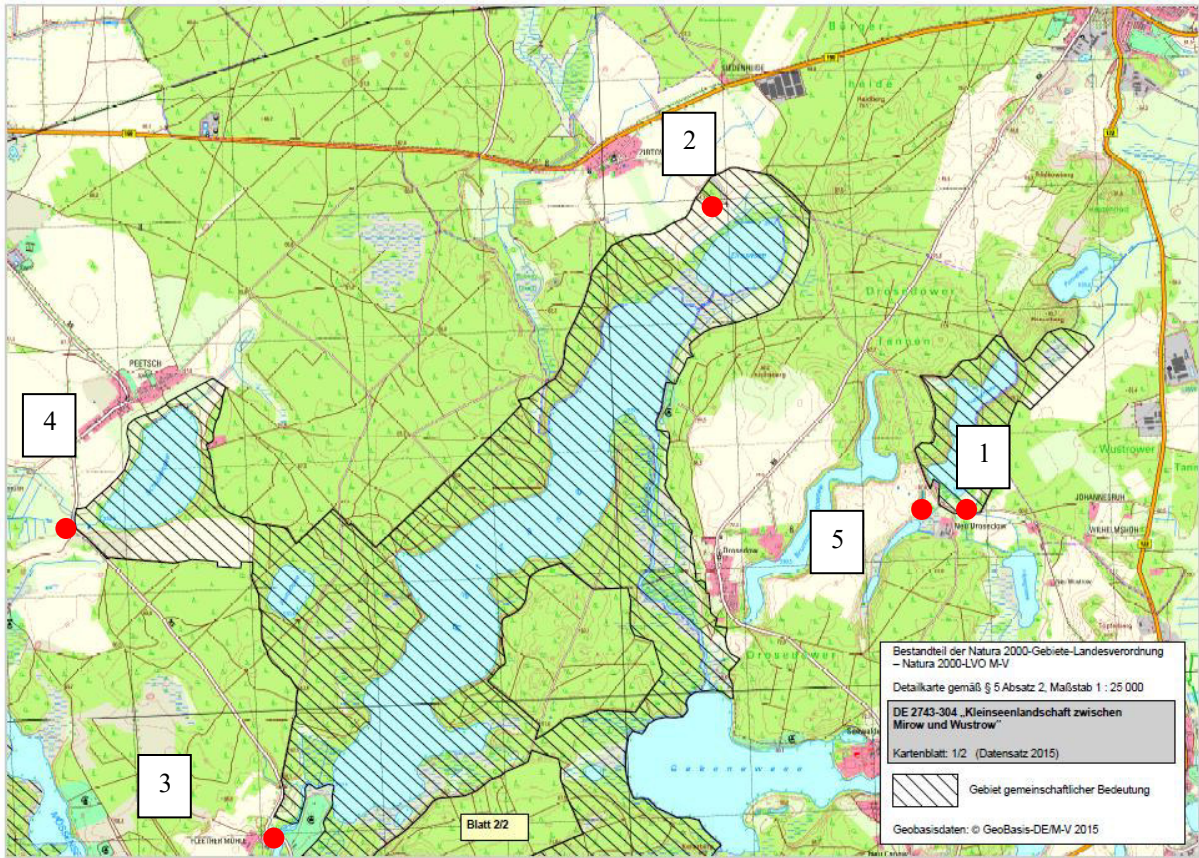


**Detailübersichtskarten des GGB DE 2742-302 „Mirower Holm“**

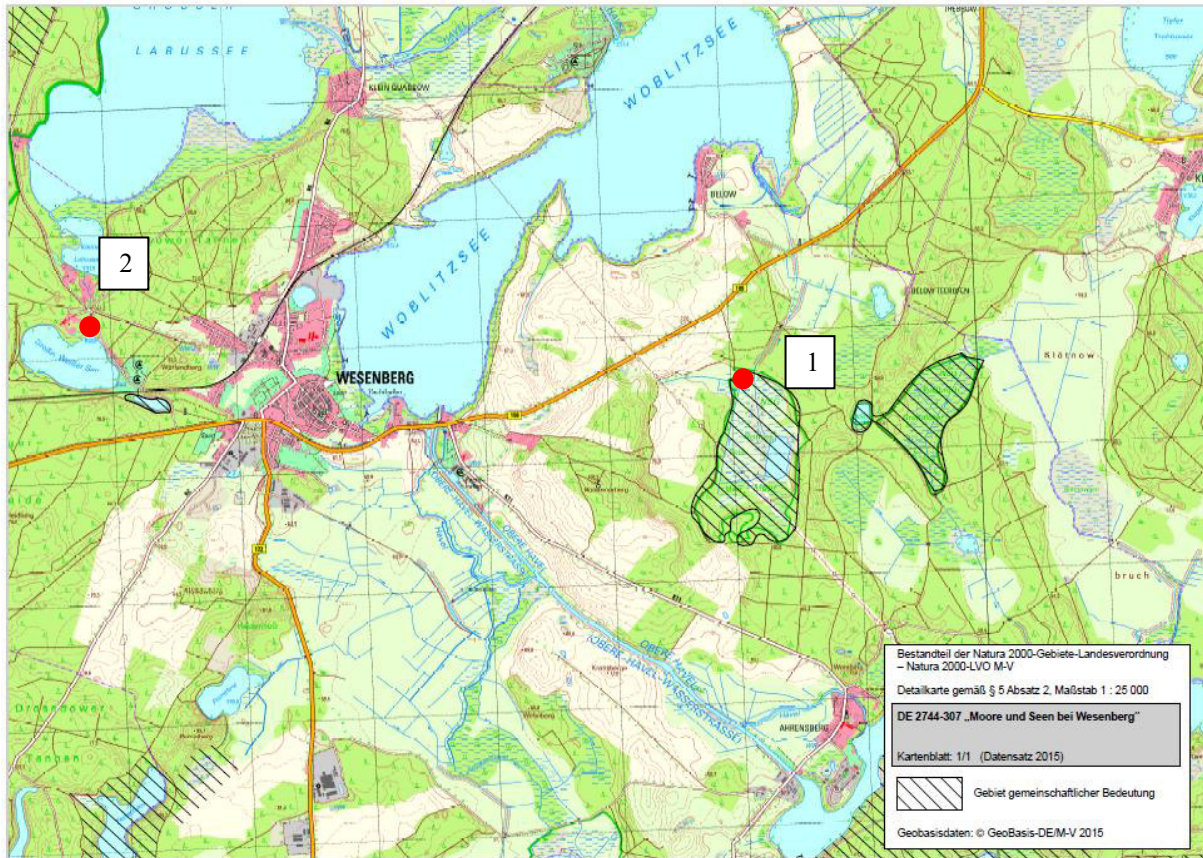




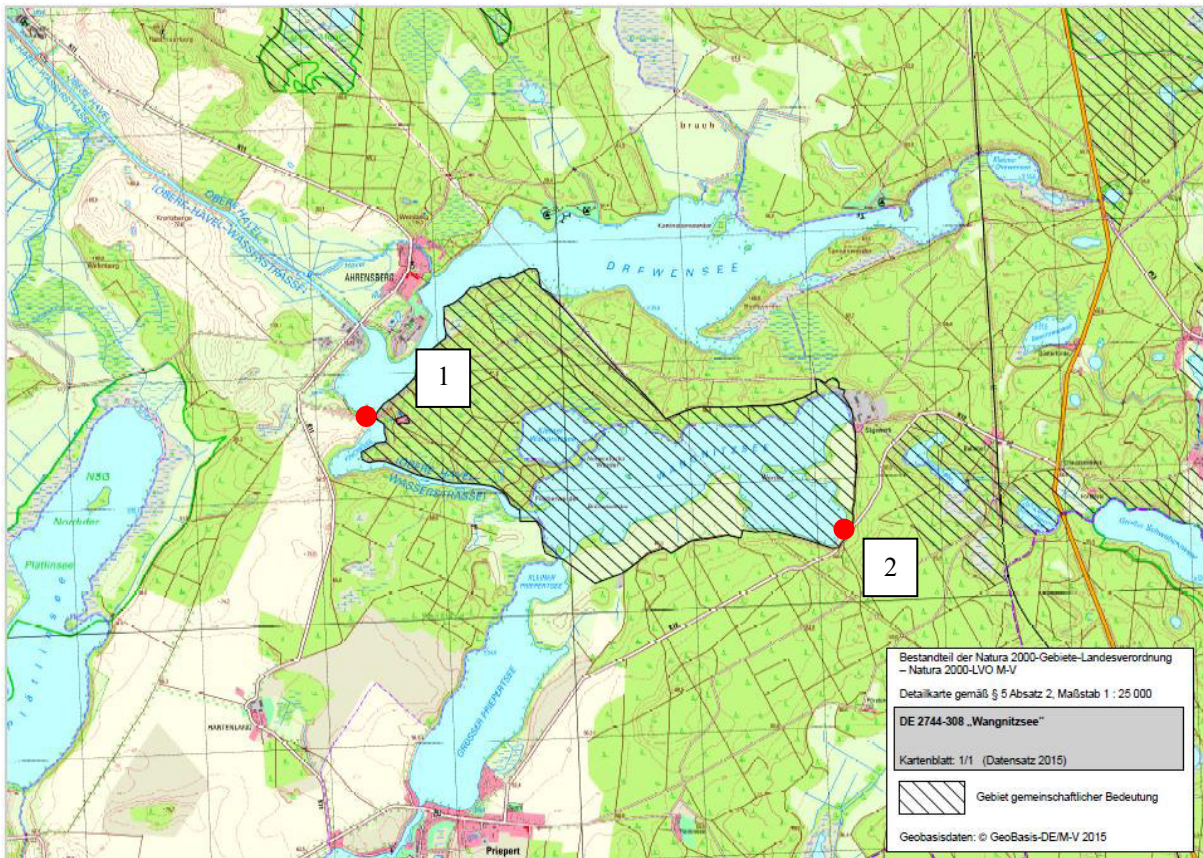
**Detailübersichtskarten des GGB DE 2743-304**  
**„Kleinseenlandschaft zw. Mirow und Wustrow“**



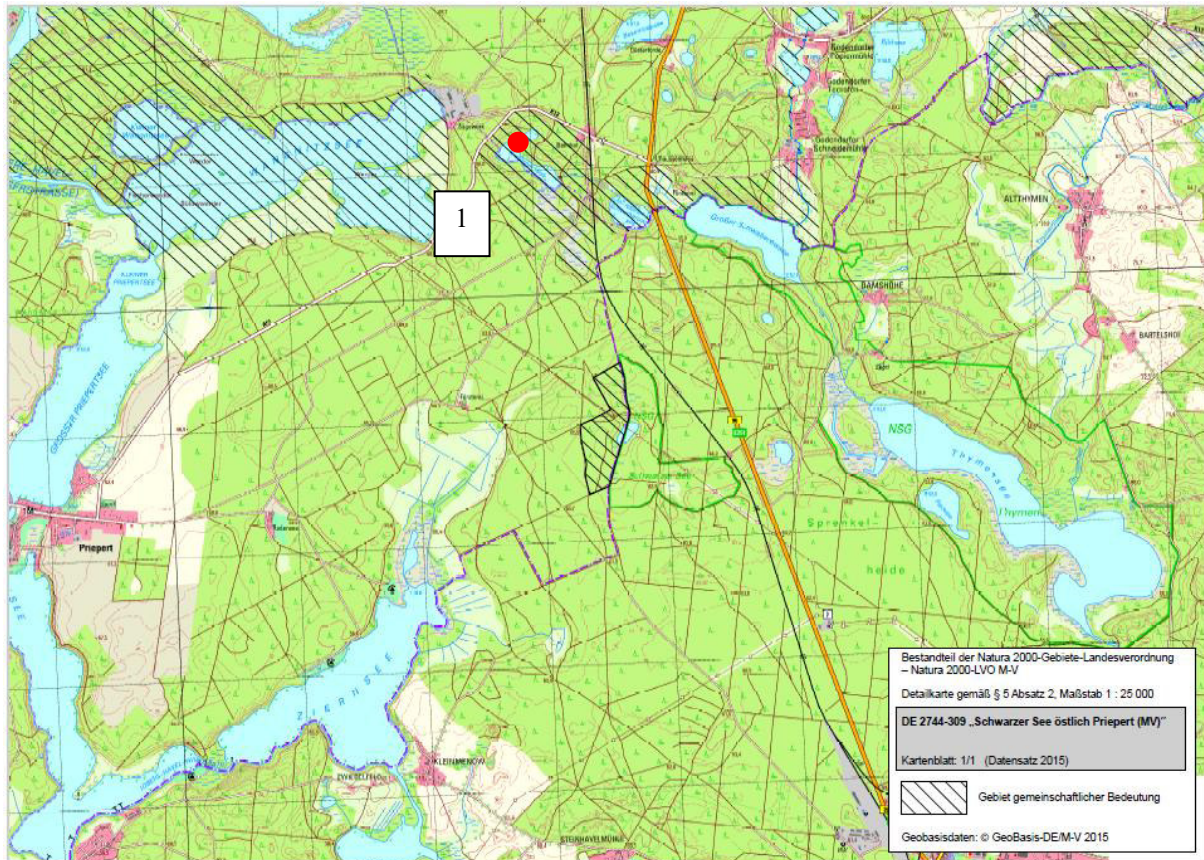
**Detailübersichtskarten des GGB DE 2744-307 „Moore und Seen bei Wesenberg“**



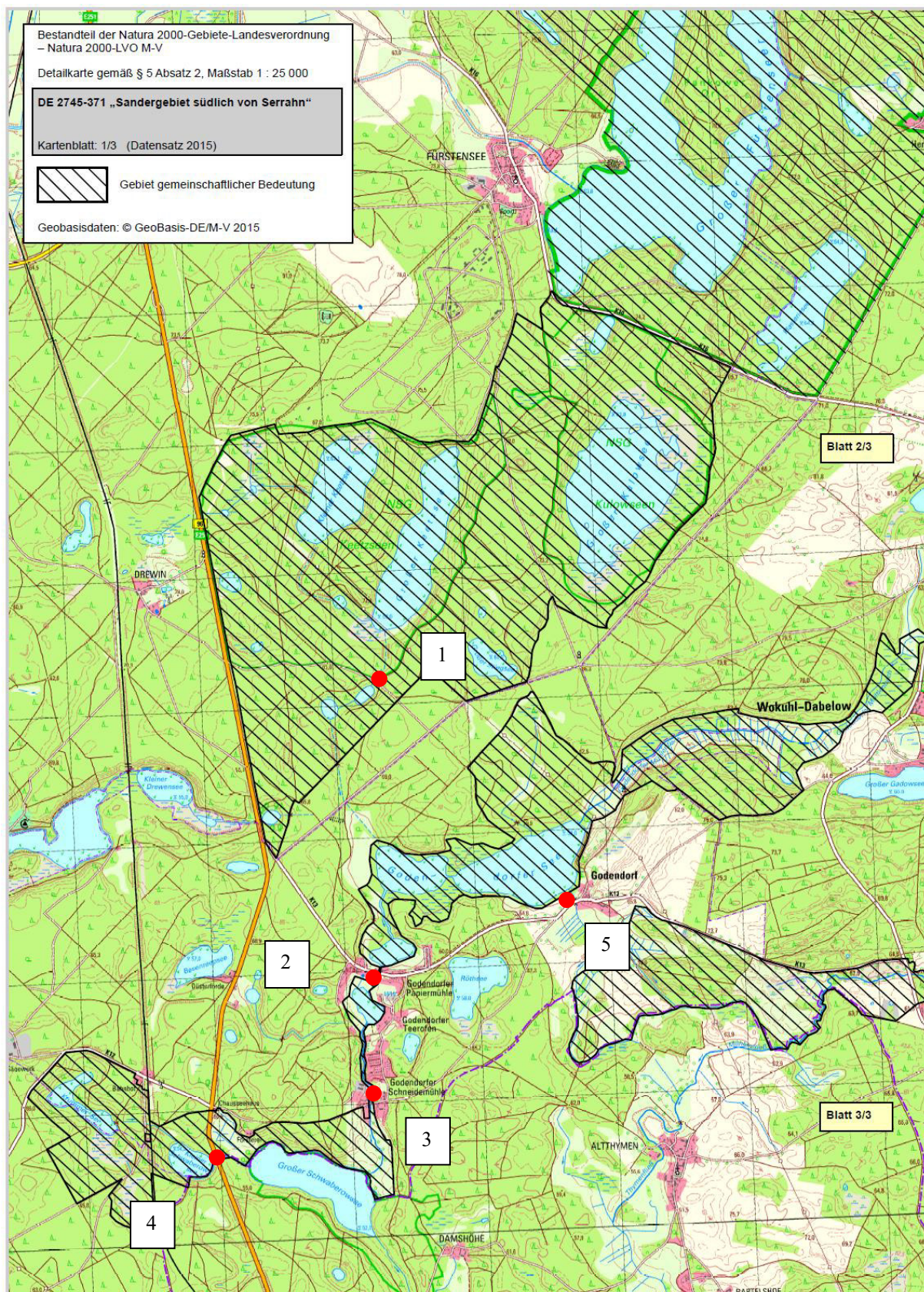
**Detailübersichtskarten des GGB DE 2744-308 „Wangnitzsee“**

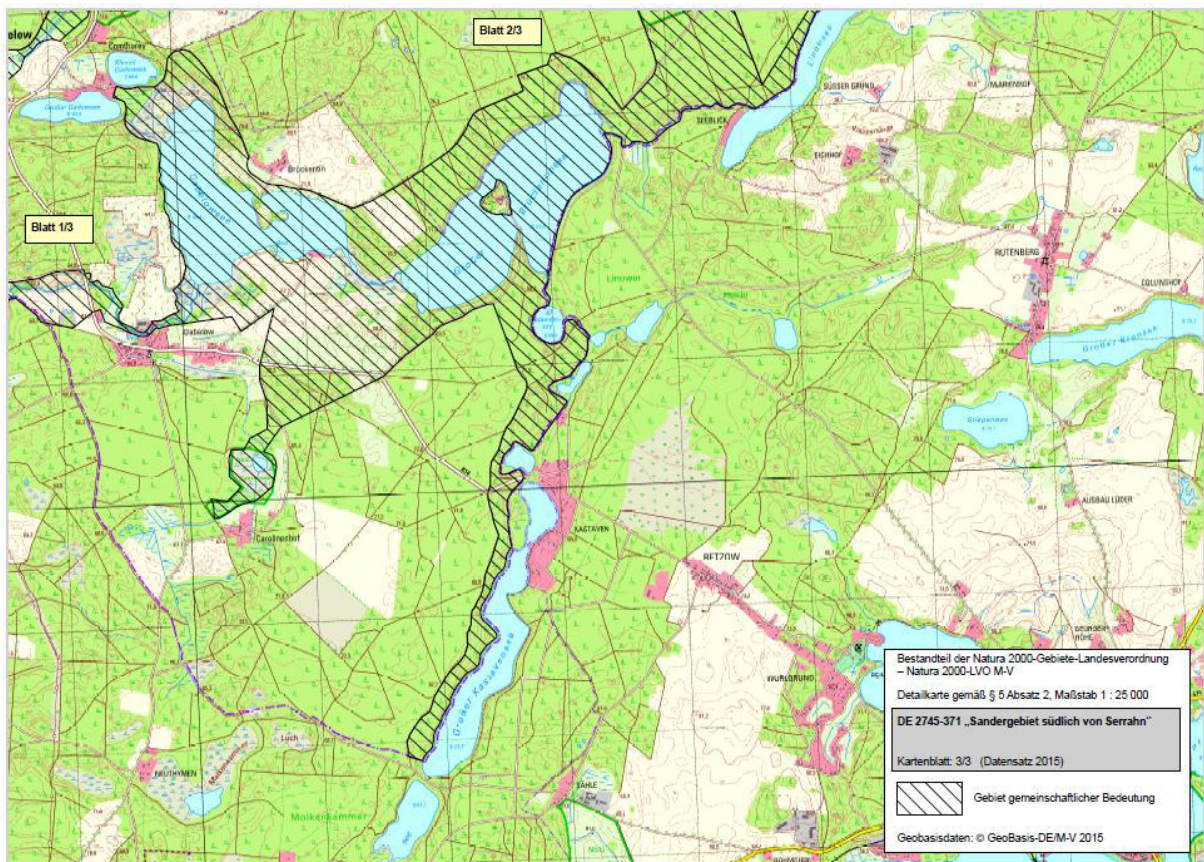
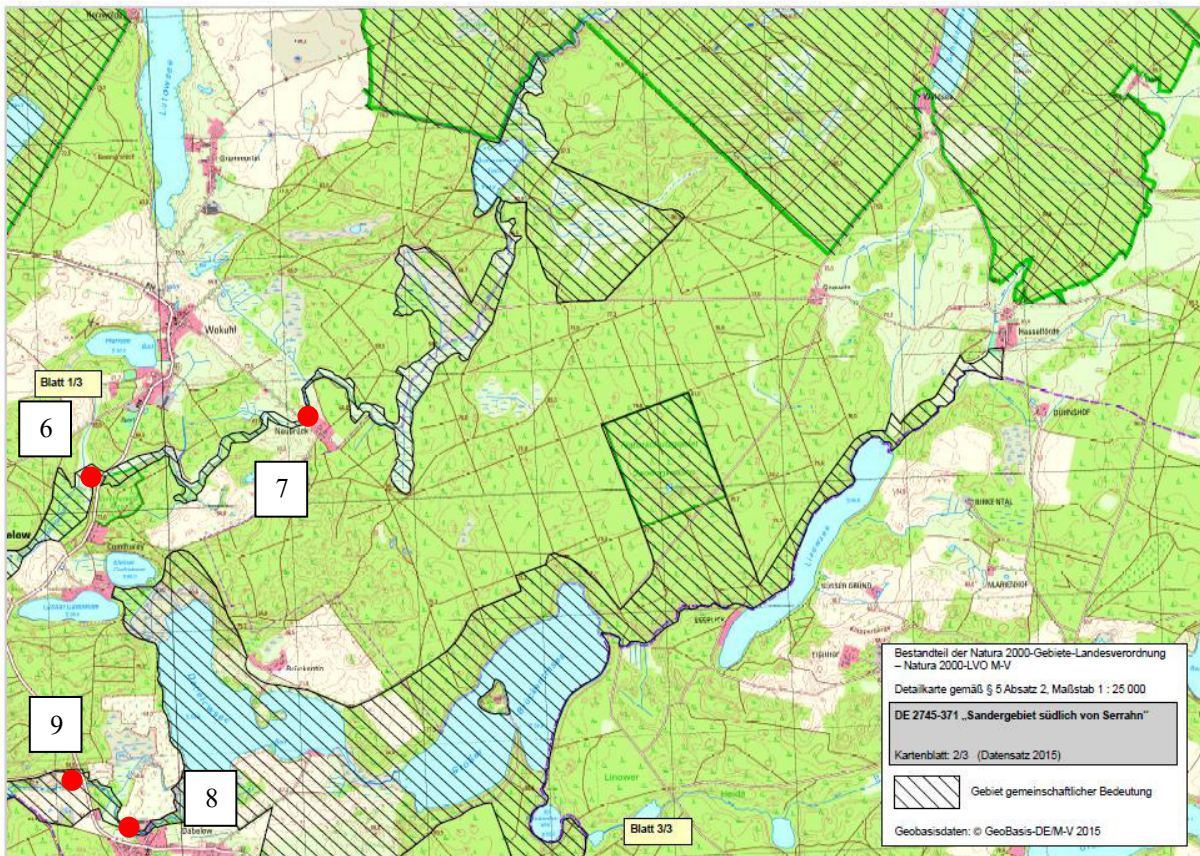


## Detailübersichtskarten des GGB DE 2744-309 „Schwarzer See östlich Priepert (MV)“

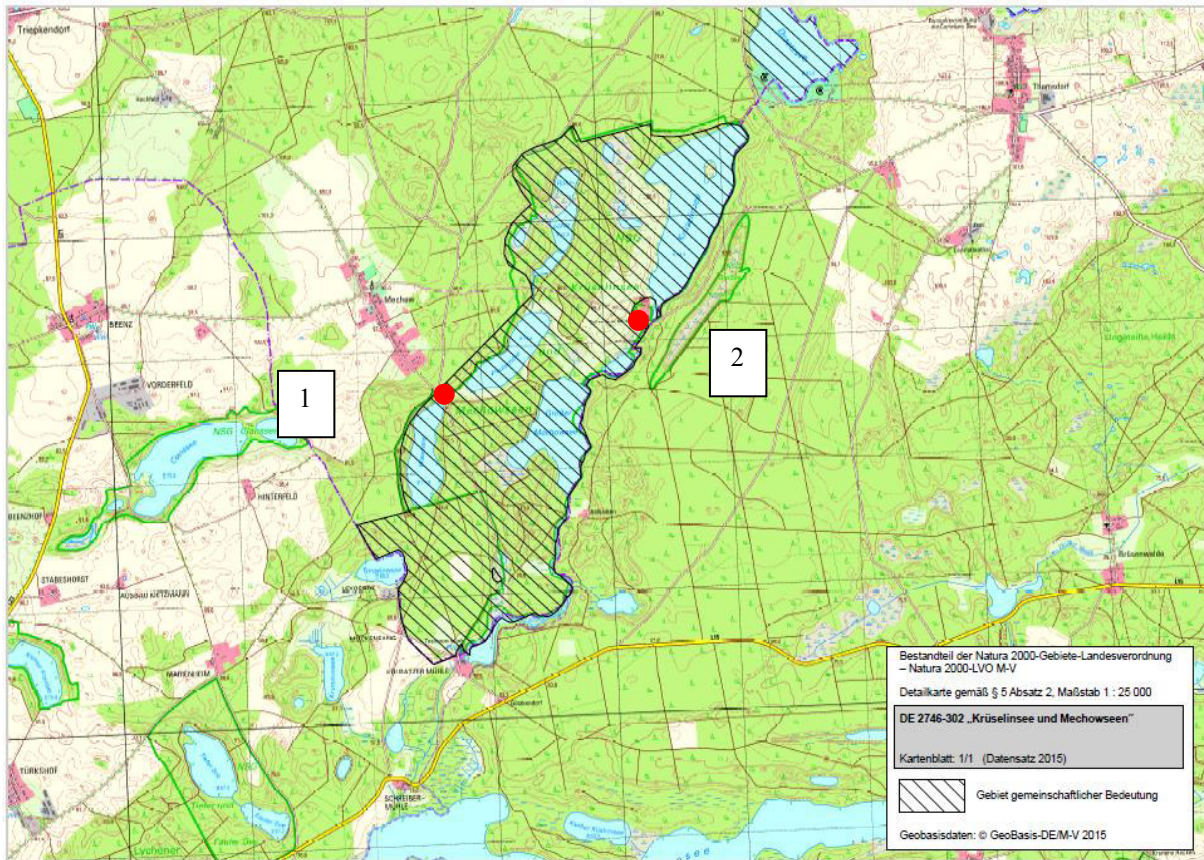


## Detailübersichtskarten des GGB DE 2745-371 „Sandergebiet südlich von Serrahn“

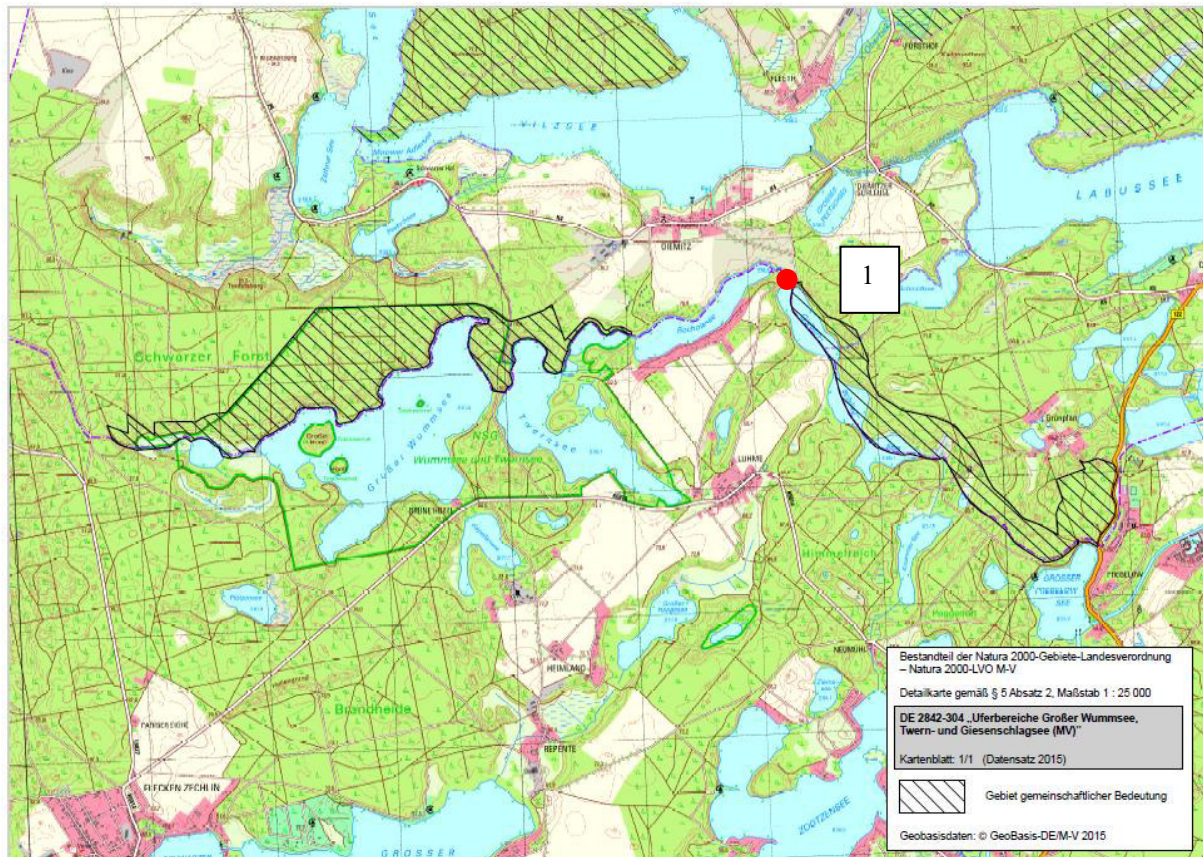




**Detailübersichtskarten des GGB DE 2746-302 „Krüselinsee und Mechowseen“**



**Detailübersichtskarten des GGB DE 2842-304  
„Uferbereiche Großer Wummsee, Twern- und Giesenschlagsee (MV)“**



## Detailübersichtskarten des GGB DE 2844-305 „Großer Boberowsee (MV)“

