

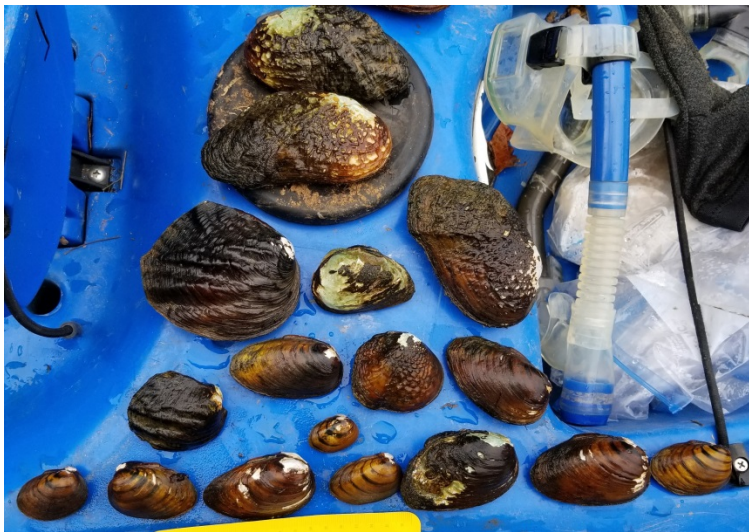
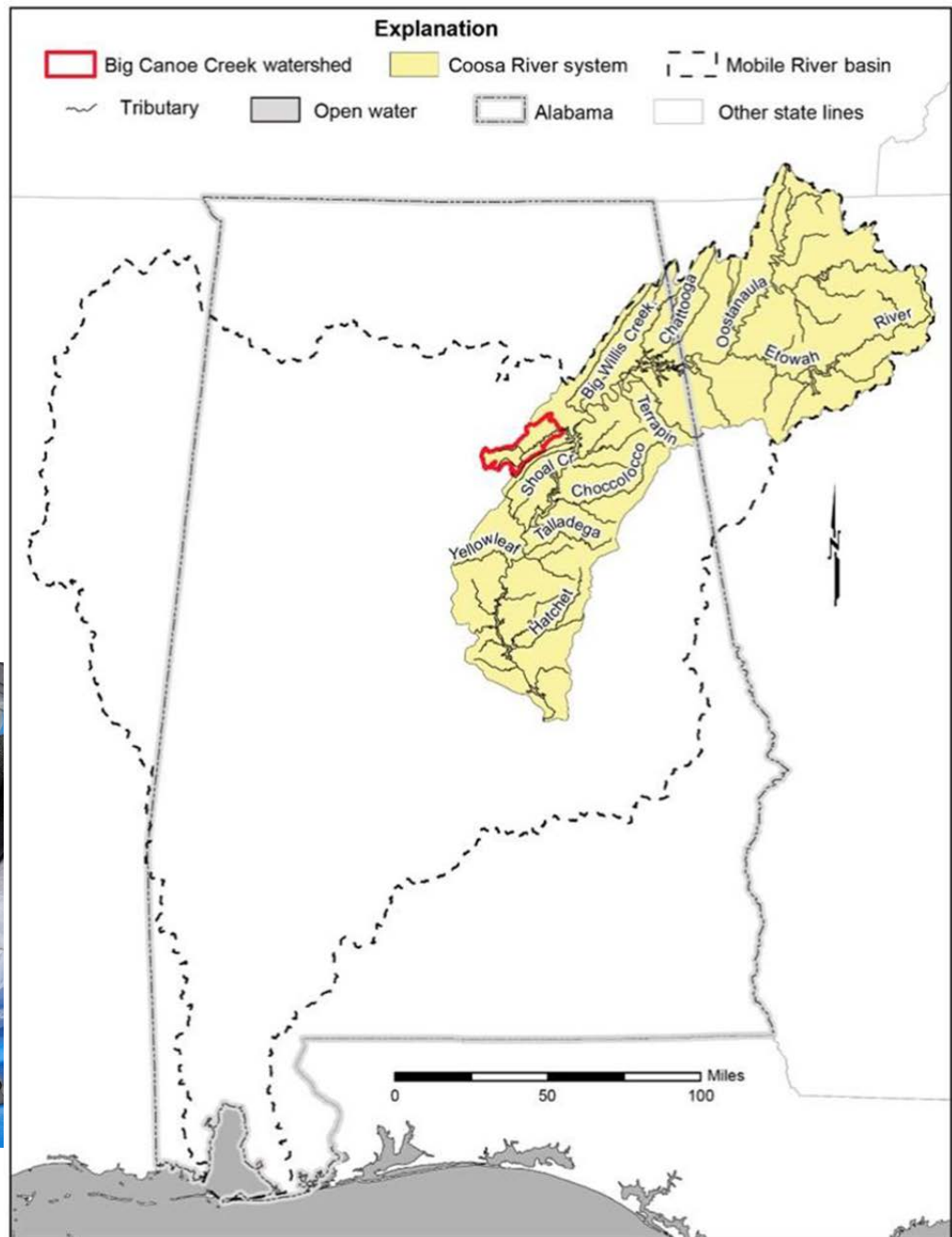
Freshwater Mollusks (Mollusca: Unionidae and Gastropoda) in Big Canoe Creek (Etowah and St. Clair Counties), Alabama Section 6 Report

**Todd B. Fobian
Michael L. Buntin
Jesse T. Holifield
Jeffrey T. Garner
Paul D. Johnson**

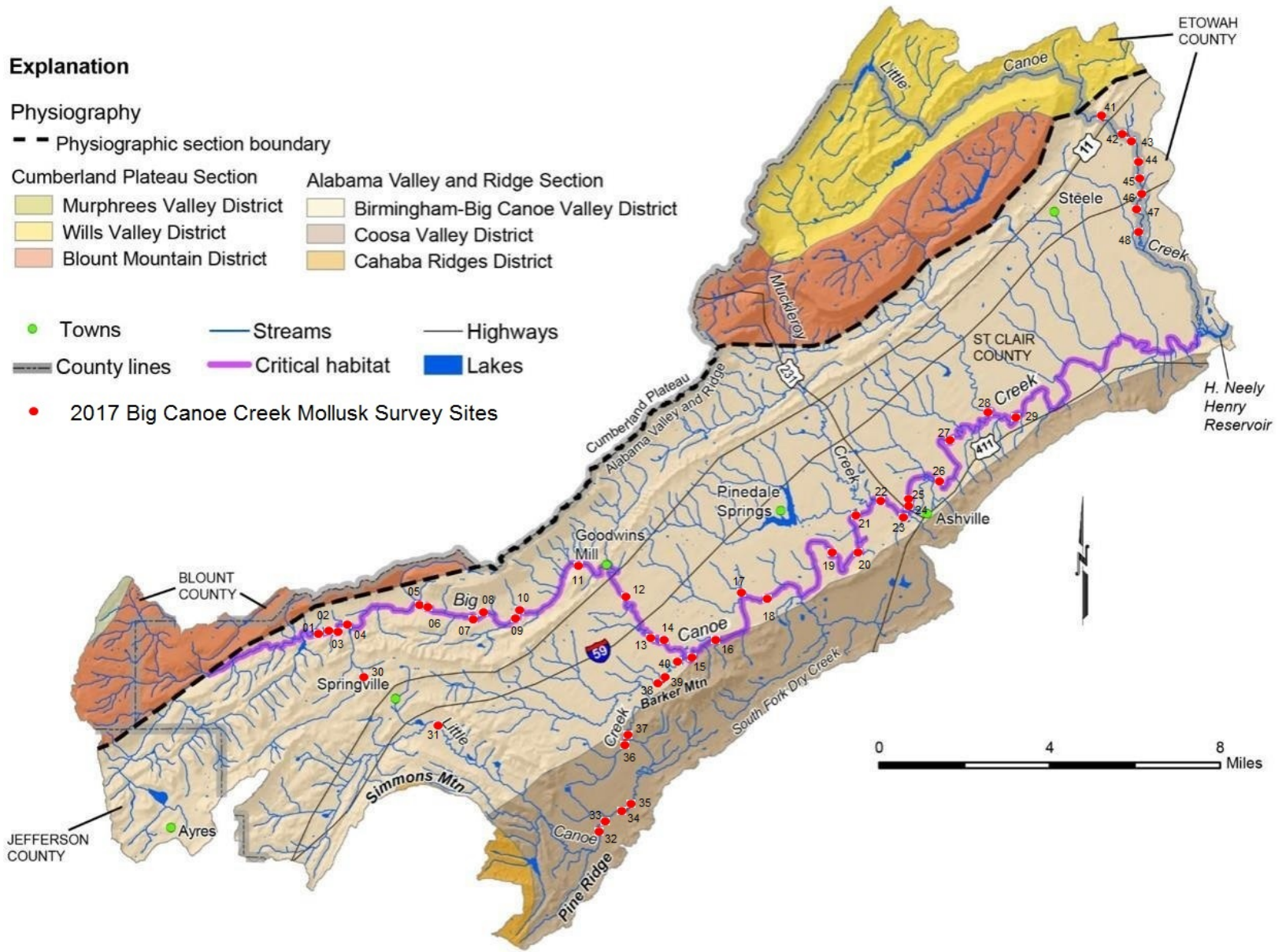
Map courtesy of Wynn et al 2016 Geological
Survey of Alabama.



- Big Canoe Creek drainage in Blount, Etowah, Jefferson and St. Clair Counties in north east Alabama. Map courtesy of Wynn et al 2016 Geological Survey of Alabama.



Map courtesy of Wynn et al 2016 Geological Survey of Alabama.



Big Canoe Creek drainage mollusk survey sites in Etowah and St. Clair Counties in north east Alabama. Map courtesy of Wynn et al 2016 Geological Survey of Alabama.

Freshwater Mollusks (Mollusca: Unionidae and Gastropoda) in Big Canoe Creek (Etowah and St. Clair Counties), Alabama

Section 6 Report

- Qualitatively Timed searched at 48 sites
- 497 live mussels representing 16 species was collected over 45.4 person-hours,
- CPUE of 10.9 mussels/person-hour
- 9 gastropod species were collected
- Federally protected *Hamiota altilis*, *Pleurobema decisum* and *Ptychobranthus foremanianus*
- Conservation Concern Targets: *Pleurobema athearni*, *Elimia capillaris*
- *N=1 Lasmigona etowaensis* Big Canoe headwaters, last record of *L. etowaensis* from the early 1970's from Lower Little Canoe Creek, (Hurd 1974)
- 41 of 57 mollusk species collected in the past 25 years, sub adults observed 10 mussel species
- Historically supported 36 mussel species and 21 gastropod species.
- Notable losses to historical BCC mollusk fauna: *Cyclonaias asperata*, *Epioblasma metastriata* X, *Epioblasma othcaloogensis* X, *Fusconaia cerina*, *Lampsilis straminea*, *Medionidus acutissimus*, *Obovaria unicolor*, *Villosa lienosa*, *Elimia bellula*, *Elimia laeta* X, *Elimia lecontiana*, *Gyrotoma pyramidatum* X, *Leptoxis foremani*, *Leptoxis coosaensis*, *Lioplax cyclostomataforniis*, *Rhodacmea elatior*, *Tulotoma magnifica*

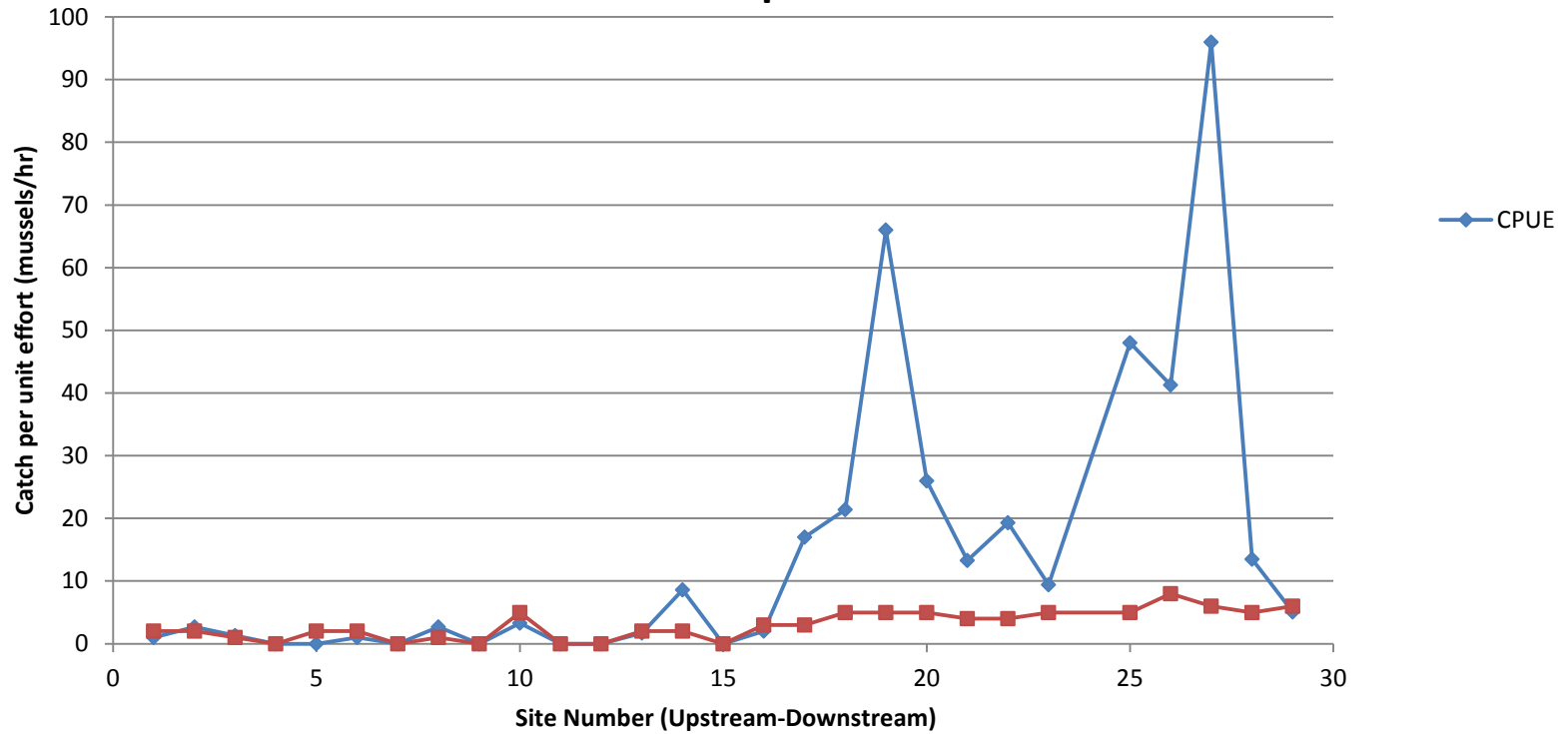
Big Canoe Creek overall species abundance.
 (*) indicates federally protected species (JV)
 indicates subadults observed

Species	# Collected	% Abundance
<i>Tritogonia verrucosa (JV)</i>	166	33.4%
<i>Amblema elliotii (JV)</i>	152	30.6%
<i>Pleurobema decisum*</i> (JV)	103	20.7%
<i>Lampsilis ornata (JV)</i>	20	4.0%
<i>Pleurobema athearni</i>	10	2.0%
<i>Villosa umbrans (JV)</i>	7	1.4%
<i>Villosa vibex</i>	7	1.4%
<i>Hamiota altilis*</i> (JV)	6	1.2%
<i>Leptodea fragilis (JV)</i>	6	1.2%
<i>Obliquaria reflexa (JV)</i>	6	1.2%
<i>Quadrula rumphiana</i>	6	1.2%
<i>Megalonaias nervosa</i>	3	0.6%
<i>Ptychobranthus foremanianus*</i>	2	0.4%
<i>Lasmigona etowaensis (JV)</i>	1	0.2%
<i>Pseudodontoideus connasaugaensis</i>	1	0.2%
<i>Villosa nebulosa (JV)</i>	1	0.2%
<i>Lampsilis teres</i>	FD	
<i>Lasmigona alabamensis</i>	WD	
<i>Utterbackia imbecillis</i>	WD	
<i>Elliptio arctata</i>	R	
<i>Ligumia recta</i>	R	

Species site distribution of live and
 fresh dead mussels from Big Canoe
 Creek

Species	# Sites	% Sites
<i>Tritogonia verrucosa (JV)</i>	19	39.6%
<i>Amblema elliotii (JV)</i>	12	25.0%
<i>Villosa umbrans (JV)</i>	11	22.9%
<i>Pleurobema decisum*</i> (JV)	10	20.8%
<i>Lampsilis ornata (JV)</i>	9	18.8%
<i>Quadrula rumphiana</i>	6	12.5%
<i>Hamiota altilis*</i> (JV)	5	10.4%
<i>Leptodea fragilis (JV)</i>	4	8.3%
<i>Obliquaria reflexa (JV)</i>	4	8.3%
<i>Pleurobema athearni</i>	4	8.3%
<i>Villosa vibex</i>	3	6.3%
<i>Lampsilis teres</i>	2	4.2%
<i>Megalonaias nervosa</i>	2	4.2%
<i>Ptychobranthus foremanianus*</i>	2	4.2%
<i>Lasmigona etowaensis (JV)</i>	1	2.1%
<i>Pseudodontoideus connasaugaensis</i>	1	2.1%
<i>Villosa nebulosa (JV)</i>	1	2.1%

Big Canoe Creek Mussel CPUE and Species Richness Site Comparison



Explanation

Physiography

--- Physiographic section boundary

Cumberland Plateau Section

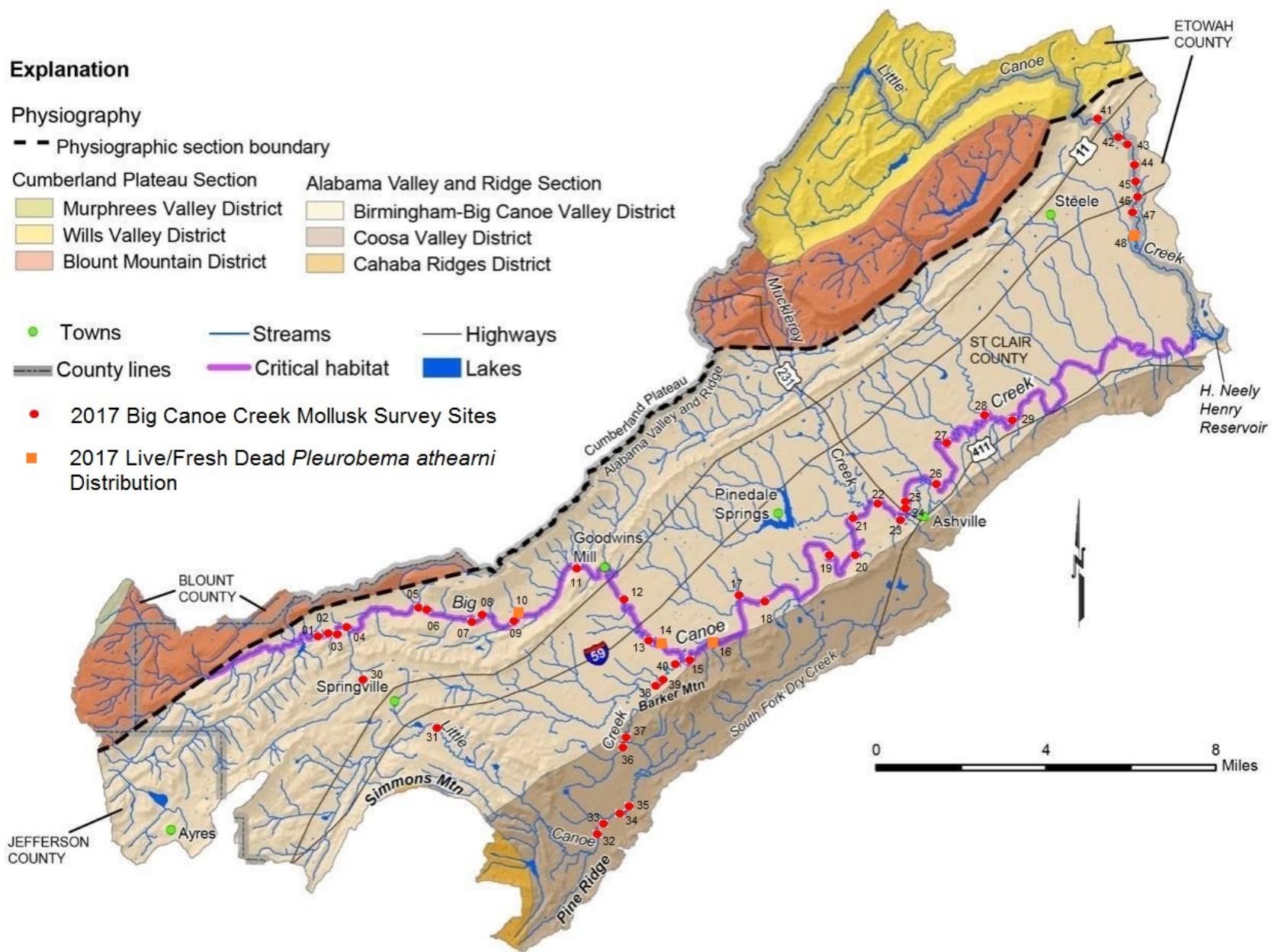
- Murphrees Valley District
- Wills Valley District
- Blount Mountain District

Alabama Valley and Ridge Section

- Birmingham-Big Canoe Valley District
- Coosa Valley District
- Cahaba Ridges District

- Towns
- Streams
- Highways
- County lines
- Critical habitat
- Lakes

- 2017 Big Canoe Creek Mollusk Survey Sites
- 2017 Live/Fresh Dead *Pleurobema thearni* Distribution



The distribution of live and fresh dead *Pleurobema thearni* collected within the Big Canoe Creek drainage study area during present survey. Map courtesy of Wynn et al 2016 Geological Survey of Alabama.

A total of 10 live *P. atearni* was collected among 3 sites, fresh dead at one site and relic at 8 sites

Sizes of live individuals were 61, 68, 69, 70, 71, 85, 86, 91, 92 and 97 mm in length



Less than 15 live individuals of *P. atearni* have been collected in the past 25 years from five sites including two in ULCC and three in BCC proper. Two sites with live *P. atearni* in this survey were new isolated and remote sites. Site revisits only FD & R

Explanation

Physiography

--- Physiographic section boundary

Cumberland Plateau Section

- Murphrees Valley District
- Wills Valley District
- Blount Mountain District

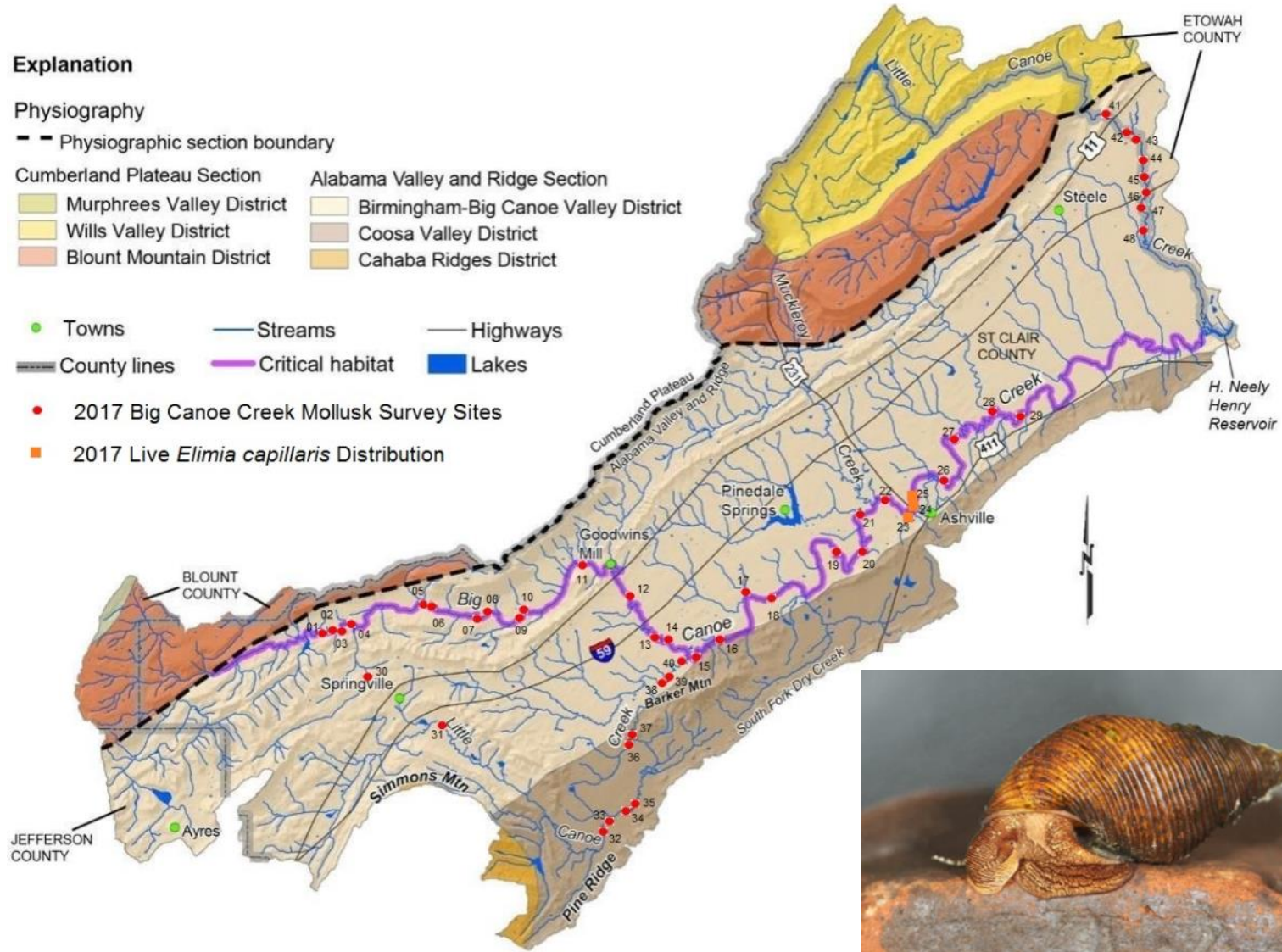
Alabama Valley and Ridge Section

- Birmingham-Big Canoe Valley District
- Coosa Valley District
- Cahaba Ridges District

- Towns
- Streams
- Highways
- County lines
- Critical habitat
- Lakes

• 2017 Big Canoe Creek Mollusk Survey Sites

■ 2017 Live *Elimia capillaris* Distribution



The distribution of live and fresh dead *Elimia capillaris* collected within the Big Canoe Creek drainage study area during present survey. Map courtesy of Wynn et al 2016 Geological Survey of Alabama. Previously thought extinct. Last collected in August 31, 1990 (Bogan and Pierson 1993) before being rediscovered in BCC in 2014 (APC, USFWS, ADCNR unpublished reports 2014)



Elimia capillaris attaching to the bottom of the Coosa River, moments after reintroduction into the Coosa River, Weiss Bypass, Cherokee County, Alabama. The *E. capillaris* are visible in the top of the photo, with *E. lecontiana* more prominent in the middle and bottom sections of the photo. N= 1486 released 2016, N=1251 released 2017





Questions?



Species	Site (BCC)	1	2	3	4	5	6	7	8
<i>Amblema elliottii</i> (JV)									
<i>Elliptio arctata</i>									
<i>Hamiota altilis</i> *(JV)									
<i>Lampsilis ornata</i> (JV)									
<i>Lampsilis teres</i>									
<i>Lasmigona</i> □ <i>alabamensis</i>									
<i>Lasmigona etowaensis</i> (JV)		1							
<i>Leptodea fragilis</i> (JV)									
<i>Ligumia recta</i>									
<i>Megaloniaias nervosa</i>									
<i>Obliquaria reflexa</i> (JV)									
<i>Pleurobema athearni</i> (UR)									
<i>Pleurobema decisum</i> *(JV)									
<i>Pseudodontoideus connasaugaensis</i>			1						
<i>Ptychobranchus foremanianus</i> *									
<i>Quadrula rumphiana</i>									
<i>Tritogonia verrucosa</i> (JV)									
<i>Utterbackia imbecillis</i>					WD				
<i>Villosa nebulosa</i> (JV)									
<i>Villosa umbrans</i> (JV)		1	1	1		FD	1		2
<i>Villosa vibex</i>						FD	FD		
<i>Campeloma regulare</i>									
<i>Elimia capillaris</i>									
<i>Elimia carinifera</i>									
<i>Elimia carinocostata</i>		L	L		L	L		L	L
<i>Elimia modesta</i>		L	L		L	L		L	L
<i>Laevapex fuscus</i>									
<i>Physella</i> sp.									
<i>Pleurocera</i> sp. cf. <i>vestita</i>									L
<i>Somatogyrus</i> sp.									
Search Time (person hours)		2	0.8	0.8	0.8	0.5	1.0	0.5	0.8
Total number of mussels		2	2	1	0	0	1	0	2
CPUE		1.0	2.7	1.3	0.0	0.0	1.0	0.0	2.7
Total mussel species(L,FD)		2	2	1	0	2	2	0	1
Total gastropod species (L,FD)		2	2	0	2	2	0	2	2
Historic species(L, FD, WD, & R)		4	4	1	3	4	2	2	3

Species	Site (BCC)	9	10	11	12	13	14	15	16
<i>Amblema elliottii</i> (JV)									FD
<i>Elliptio arctata</i>									
<i>Hamiota altilis</i> *(JV)			1						1
<i>Lampsilis ornata</i> (JV)					WD	1			
<i>Lampsilis teres</i>									
<i>Lasmigona alabamensis</i>									
<i>Lasmigona etowaensis</i> (JV)									
<i>Leptodea fragilis</i> (JV)									
<i>Ligumia recta</i>									
<i>Megalonaias nervosa</i>									
<i>Obliquaria reflexa</i> (JV)									
<i>Pleurobema athearni</i> (UR)			FD				8		1
<i>Pleurobema decisum</i> *(JV)									
<i>Pseudodontoideus connasaugaensis</i>									
<i>Ptychobranchus foremanianus</i> *			1						WD
<i>Quadrula rumphiana</i>									
<i>Tritogonia verrucosa</i> (JV)						1	2		
<i>Utterbackia imbecillis</i>									
<i>Villosa nebulosa</i> (JV)			1						
<i>Villosa umbrans</i> (JV)									
<i>Villosa vibex</i>			7						
<i>Campeloma regulare</i>		L	L	L					
<i>Elimia capillaris</i>									
<i>Elimia carinifera</i>									
<i>Elimia carinocostata</i>		L	L	L	L	L			
<i>Elimia modesta</i>		L	L	L	L	L	L	L	
<i>Laevapex fuscus</i>									
<i>Physella</i> sp.					L				
<i>Pleurocera</i> sp. cf. <i>vestita</i>		L	L	L	L	L	L	L	
<i>Somatogyrus</i> sp.									
Search Time (person hours)		0.5	3.0	0.5	1.5	1.2	1.2	0.5	1.0
Total number of mussels		0	10	0	0	2	10	0	2
CPUE		0.0	3.3	0.0	0.0	1.7	8.6	0.0	2.0
Total mussel species(L,FD)		0	5	0	0	2	2	0	3
Total gastropod species (L,FD)		4	4	4	4	3	2	2	0
Historic species(L, FD, WD, & R)		4	9	4	5	5	4	2	4

Species	Site (BCC)	17	18	19	20	21	22	23	24
<i>Amblema elliottii</i> (JV)		1	1	9	4	1	1	1	
<i>Elliptio arctata</i>									
<i>Hamiota altilis</i> *(JV)			1						
<i>Lampsilis ornata</i> (JV)			2	1		1	3	2	
<i>Lampsilis teres</i>									
<i>Lasmigona alabamensis</i>									
<i>Lasmigona etowaensis</i> (JV)									
<i>Leptodea fragilis</i> (JV)			1	3			WD		
<i>Ligumia recta</i>									
<i>Megalonaias nervosa</i>									
<i>Obliquaria reflexa</i> (JV)							WD	1	
<i>Pleurobema atearni</i> (UR)			R						
<i>Pleurobema decisum</i> *(JV)			R	1	10	14	10	3	
<i>Pseudodontoideus connasaugaensis</i>									
<i>Ptychobranchus foremanianus</i> *					1				
<i>Quadrula rumphiana</i>		1	R	WD	1	R			
<i>Tritogonia verrucosa</i> (JV)		15	20	30	10	4	15	4	
<i>Utterbackia imbecillis</i>									
<i>Villosa nebulosa</i> (JV)									
<i>Villosa umbrans</i> (JV)									
<i>Villosa vibex</i>									
<i>Campeloma regulare</i>									
<i>Elimia capillaris</i>								L	L
<i>Elimia carinifera</i>									
<i>Elimia carinocostata</i>		L	L			L			
<i>Elimia modesta</i>		L	L	L	L	L	L	L	L
<i>Laevapex fuscus</i>				L				L	L
<i>Physella</i> sp.								L	
<i>Pleurocera</i> sp. cf. <i>vestita</i>		L	L	L	L	L	L	L	L
<i>Somatogyrus</i> sp.				L				L	L
Search Time (person hours)		1.0	1.2	0.7	1.0	1.5	1.5	1.2	0.3
Total number of mussels		17	25	44	26	20	29	11	0
CPUE		17.0	21.4	66.0	26.0	13.3	19.3	9.4	0.0
Total mussel species(L,FD)		3	5	5	5	4	4	5	0
Total gastropod species (L, FD)		3	3	4	2	3	2	6	5
Historic species(L, FD, WD, & R)		6	11	10	7	8	8	11	5

Species	Site (BCC)	25	26	27	28	29	ST30	UL31	UL32
<i>Amblema elliottii</i> (JV)		17	35	79		3			
<i>Elliptio arcata</i>		R?							
<i>Hamiota altilis</i> *(JV)									
<i>Lampsilis ornata</i> (JV)		9	1	R	FD	WD			
<i>Lampsilis teres</i>				FD	FD				
<i>Lasmigona alabamensis</i>						WD			
<i>Lasmigona etowaensis</i> (JV)									
<i>Leptodea fragilis</i> (JV)		2	FD						
<i>Ligumia recta</i>		R				R			
<i>Megaloniaias nervosa</i>			1			2			
<i>Obliquaria reflexa</i> (JV)			1	4		FD			
<i>Pleurobema athearni</i> (UR)		R							R
<i>Pleurobema decisum</i> *(JV)		34	13	16	2	FD			
<i>Pseudodontoideus connasaugaensis</i>									
<i>Ptychobranchus foremanianus</i> *									
<i>Quadrula rumphiana</i>		WD	1	1	1	1			
<i>Tritogonia verrucosa</i> (JV)		18	10	12	6	FD			1
<i>Utterbackia imbecillis</i>									
<i>Villosa nebulosa</i> (JV)									
<i>Villosa umbrans</i> (JV)									
<i>Villosa vibex</i>									
<i>Campeloma regulare</i>								L	L
<i>Elimia capillaris</i>		L							
<i>Elimia carinifera</i>							L		
<i>Elimia carinocostata</i>							L	L	L
<i>Elimia modesta</i>		L	L					L	L
<i>Laevapex fuscus</i>		L	L						
<i>Physella</i> sp.									
<i>Pleurocera</i> sp. cf. <i>vestita</i>		L	L	L	L			L	L
<i>Somatogyrus</i> sp.									
Search Time (person hours)		1.7	1.5	1.2	0.7	1.2	0.1	0.5	0.7
Total number of mussels		80	62	112	9	6	0	0	1
CPUE		48.0	41.3	96.0	13.5	5.1	0.0	0.0	1.5
Total mussel species(L,FD)		5	8	6	5	6	0	0	1
Total gastropod species (L,FD)		4	3	1	1	0	2	4	4
Historic species(L, FD, WD, & R)		13	11	8	6	9	2	4	6

Species	Site (BCC)	UL33	UL34	UL35	UL36	UL37	UL38	UL39	UL40
<i>Amblema elliottii</i> (JV)									
<i>Elliptio arctata</i>									
<i>Hamiota altilis</i> *(JV)								1	2
<i>Lampsilis ornata</i> (JV)					R				
<i>Lampsilis teres</i>									
<i>Lasmigona alabamensis</i>									
<i>Lasmigona etowaensis</i> (JV)									
<i>Leptodea fragilis</i> (JV)									
<i>Ligumia recta</i>									
<i>Megaloniaias nervosa</i>									
<i>Obliquaria reflexa</i> (JV)									
<i>Pleurobema atearni</i> (UR)		R	R	R	R				
<i>Pleurobema decisum</i> *(JV)									WD
<i>Pseudodontoideus connasaugaensis</i>									
<i>Ptychobranchus foremanianus</i> *								R	WD
<i>Quadrula rumphiana</i>									
<i>Tritogonia verrucosa</i> (JV)					R		8	8	1
<i>Utterbackia imbecillis</i>									
<i>Villosa nebulosa</i> (JV)									
<i>Villosa umbrans</i> (JV)			WD	FD					
<i>Villosa vibex</i>									
<i>Campeloma regulare</i>									
<i>Elimia capillaris</i>									
<i>Elimia carinifera</i>									
<i>Elimia carinocostata</i>		L	L			L			L
<i>Elimia modesta</i>		L	L			L			L
<i>Laevapex fuscus</i>									
<i>Physella</i> sp.									
<i>Pleurocera</i> sp. cf. <i>vestita</i>		L	L			L			L
<i>Somatogyrus</i> sp.									
Search Time		0.5	1.5	0.5	0.5	0.5	1.0	1.0	1.0
Total number of mussels		0	0	0	0	0	8	9	3
CPUE		0.0	0.0	0.0	0.0	0.0	8.0	9.0	3.0
Total mussel species(L,FD)		0	0	1	0	0	1	2	2
Total gastropod species (L,FD)		3	3	0	0	3	0	0	3
Historic species(L, FD, WD, & R)		4	5	2	3	3	1	3	7

Species	Site (BCC)	LL41	LL42	LL43	LL44	LL45	LL46	LL47	LL48	Survey Totals
<i>Amblema elliotii</i> (JV)										152
<i>Elliptio arcata</i>										R
<i>Hamiota altilis</i> *(JV)										6
<i>Lampsilis ornata</i> (JV)										20
<i>Lampsilis teres</i>										FD
<i>Lasmigona alabamensis</i>										WD
<i>Lasmigona etowaensis</i> (JV)										1
<i>Leptodea fragilis</i> (JV)										6
<i>Ligumia recta</i>										R
<i>Megalonaias nervosa</i>										3
<i>Obliquaria reflexa</i> (JV)										6
<i>Pleurobema atearni</i> (UR)					R				1	10
<i>Pleurobema decisum</i> *(JV)									R	103
<i>Pseudodontoideus connasaugaensis</i>										2
<i>Ptychobranthus foremanianus</i> *										2
<i>Quadrula rumphiana</i>										6
<i>Tritogonia verrucosa</i> (JV)									2	166
<i>Utterbackia imbecillis</i>										WD
<i>Villosa nebulosa</i> (JV)										1
<i>Villosa umbrans</i> (JV)		1	FD		FD				FD	7
<i>Villosa vibex</i>										7
<i>Campeloma regulare</i>		L		L						L
<i>Elimia capillaris</i>										L
<i>Elimia carinifera</i>				L					L	L
<i>Elimia carinocostata</i>		L		L			L		L	L
<i>Elimia modesta</i>		L		L			L		L	L
<i>Laevapex fuscus</i>										L
<i>Physella</i> sp.										L
<i>Pleurocera</i> sp. cf. <i>vestita</i>		L		L			L		L	L
<i>Somatogyrus</i> sp.										L
Search Time		1.5	0.5	0.5	0.8	0.5	0.2	0.5	2.5	45.4
Total number of mussels		1	0	0	0	0	0	0	3	497
CPUE		0.7	0.0	0.0	0.0	0.0	0.0	0.0	1.2	10.9
Total mussel species(L,FD)		1	0	0	0	0	0	0	3	17
Total gastropod species (L, FD)		4	0	5	0	0	3	0	4	9
Historic mollusk species(L, FD, WD, & R)		5	0	5	0	0	3	0	7	30

Species	Williams et al 2008 (1911-2008)	Athearn & Hurd (1953-1973)	Recent Surveys (1998-2017)
<i>Amblema elliotii</i> (Coosa Fiveridge, Lea 1856)	X	X	X
<i>Cyclonaias asperata</i> (Alabama Orb, Lea 1861)	X	X	
<i>Elliptio arca</i> (Alabama Spike, Conrad 1834)	X	X	X
<i>Elliptio arctata</i> (Delicate Spike, Conrad 1834)	X	X	X
<i>Elliptio crassidens</i> (Elephantear, Lamarck 1819)	X	X	X
<i>Epioblasma metastriata</i> X (Upland Combshell, Conrad 1838)	X		
<i>Epioblasma othcaloogensis</i> X (Southern Acornshell, Lea 1857)	X	X	
<i>Fusconaia cerina</i> (Gulf Pigtoe, Conrad 1838)	X		
<i>Hamiota altilis</i> * (Finelined Pocketbook, Conrad 1834)	X	X	X
<i>Lampsilis ornata</i> (Southern Pocketbook, Conrad 1835)	X	X	X
<i>Lampsilis straminea</i> (Southern Fatmucket, Conrad 1834)	X	X	
<i>Lampsilis teres</i> (Yellow Sandshell, Rafinesque 1820)	X		X
<i>Lasmigona alabamensis</i> (Alabama Heelsplitter, Clarke 1985)	X	X	X
<i>Lasmigona etowaensis</i> (Etowah Heelsplitter, Conrad 1849)	X		X
<i>Leptodea fragilis</i> (Fragile Papershell, Rafinesque 1820)	X	X	X
<i>Ligumia recta</i> (Black Sandshell, Lamarck 1819)	X	X	X
<i>Medionidus acutissimus</i> * (Alabama Moccasinshell, Lea 1831)	X	X	
<i>Megalonaias nervosa</i> (Washboard, Rafinesque 1820)	X		X
<i>Obliquaria reflexa</i> (Threehorn Wartyback, Rafinesque 1820)	X		X
<i>Obovaria unicolor</i> (Alabama Hickorynut, Lea 1845)	X	X	
<i>Pleurobema athearni</i> UR (Canoe Creek Clubshell, Gangloff, Williams and Feminella 2006)	X	X	X
<i>Pleurobema decisum</i> * (Southern Clubshell, Lea 1831)	X	X	X
<i>Pleurobema georgianum</i> * (Southern Pigtoe, Lea 1841)	X	X	X
<i>Pleurobema hanleyianum</i> * (Georgia Pigtoe, Lea 1852)	X	X	X
<i>Pseudodontoideus connasaugaensis</i> (Alabama Creekmussel, Lea 1858)	X	X	X
<i>Ptychobranchus foremanianus</i> * (Rayed Kidneyshell, Lea 1842)	X	X	X
<i>Pyganodon grandis</i> (Giant Floater, Say 1829)	X		X
<i>Quadrula rumphiana</i> (Ridged Mapleleaf, Lea 1852)	X	X	X
<i>Toxolasma corvunculus</i> (Southern Purple Lilliput, Lea 1868)	X	X	X
<i>Tritogonia verrucosa</i> (Pistolgrip, Rafinesque 1820)	X	X	X
<i>Truncilla donaciformis</i> (Fawnsfoot, Lea 1828)	X		X
<i>Utterbackia imbecillis</i> (Paper Pondshell, Say 1829)	X	X	X
<i>Utterbackiana suborbiculata</i> (Flat Floater, Say 1831)			X
<i>Villosa lienosa</i> (Little Spectaclecase, Conrad 1834)	X	X	
<i>Villosa nebulosa</i> (Alabama Rainbow, Conrad 1834)	X	X	X
<i>Villosa umbrans</i> (Coosa Creekshell, Lea 1857)	X	X	X
<i>Villosa vibex</i> (Southern Rainbow, Conrad 1834)	X	X	X
SPECIES TOTAL (L, FD, WD, R)	36	28	30

Species	H.H. Smith 1913, Clench & Archer 1932	Athearn & Thompson (1953-1975)	Recent Surveys (1990-2017)
<i>Campeloma regulare</i> (Cylinder Campeloma, Lea 1841)	X	X	X
<i>Elimia bellula</i> UR (Yellowleaf Elimia, Lea 1861)	X		
<i>Elimia capillaris</i> (Spindle Elimia, Lea 1861)	X	X	X
<i>Elimia carinifera</i> (Sharp-crest Elimia, Lamarck 1822)	X		X
<i>Elimia carinocostata</i> (Fluted Elimia, Lea 1854)	X	X	X
<i>Elimia laeta</i> X (Ribbed Elimia, Jay 1839)	X		
<i>Elimia modesta</i> (Coldwater Elimia, Lea 1845)	X	X	X
<i>Elimia lecontiana</i> (Rippled Elimia, Lea 1841)	X	X	
<i>Gyrotoma pyramidatum</i> X (Pyramid Slitshell, Shuttleworth, 1845)		X	
<i>Laevapex fuscus</i> (Dusky Acylid, Adams 1841)			X
<i>Leptoxis foremani</i> * (Interrupted Rockgastropod, Lea 1843)	X	X	
<i>Leptoxis coosaensis</i> * (Painted Rockgastropod, Lea, 1861)	X		
<i>Lioplax cyclostomataformiis</i> * (Cylindrical Lioplax, Lea 1841)	X	X	
<i>Micromenetus dilatatus</i> (Bugle Sprite, Gould 1841)	X		X
<i>Physella</i> sp.(Physa)			X
<i>Pleurocera</i> sp. cf. <i>vestita</i> (Brook Horngastropod, Conrad 1834)	X	X	X
<i>Pseudosuccinea columella</i> (Mimic Lymnaea, Say 1817)			X
<i>Rhodacmea elatior</i> (Domed Ancyloid, Anthony 1855)	X		
<i>Somatogyrus</i> sp.(Pebblegastropod)	X		X
<i>Tulotoma magnifica</i> * (Tulotoma, Conrad 1834)	X	X	
<i>Valvata</i> sp. (Valvata)	X		
Species Total (L)	17	10	11