

SONY®

Sony Ericsson

I  big ideas

Big Ideas Lead to Great Breakthroughs

The mobile phone has just evolved. Sony and Sony Ericsson invite you to experience the future of mobile communications. Welcome to groovy music, effortless image blogging, and exhilarating design. The next generation of mobile phones is waiting to be shown to the world.



Sony Ericsson

it's all in the details

Unlocked GSM Handsets from Sony Ericsson

Unlocked mobile phones will work on most GSM networks in the world.*

Sony Ericsson mobile phones support GSM technology.



These unlocked phones work on most GSM networks worldwide. Some examples of GSM carriers in the USA are:

- AT&T (Cingular)
- T-Mobile
- SunCom
- Dobson
- Edge Wireless
- Cincinnati Bell

These phones are not compatible with CDMA networks such as Verizon and Sprint. Please contact these carriers for handsets and service.

* Network coverage and handset feature support may not be available in all areas and may not be offered by all service providers. Services and features supported by this device may be subject to additional fees or requirements. Check with your service provider for service availability, feature support and applicable charges.

* Different handsets support different GSM frequency bands. Network coverage and handset feature support may not be available in all areas and may not be offered by all service providers.



Setting up an Unlocked Phone

To change from a current GSM phone to a new Sony Ericsson phone, users should:

Transfer your contacts to your new phone

Transfer Via SIM card

1. Copy your contacts to the SIM card
On your current phone you will want to make sure your contacts are saved on your SIM card. Find the setting that lets you export your contacts to the SIM card
2. Take the SIM card out of your current phone (it's usually under the battery)
3. Put the SIM card into your new Sony Ericsson phone.

Transfer using Bluetooth® technology or Infrared (depending on your current Handset)

Apply the data settings to your new phone

Go to: www.sonyericsson.com/support

Go though the following software & setup functions:

- Mobile Internet (WAP)
- Email
- Picture Messaging (MMS)



A2DP Stereo Bluetooth® technology

You can enjoy your favorite music without wires.

Bluetooth® A2DP (Advanced Audio Distribution Profile) lets you wirelessly stream stereo music between compatible devices including mobile phones, headphones, and home and car stereos¹.

Customer Support

For additional support on setting up and using the phone, Sony Ericsson offers 24 X 7 customer support at 1-866-766-9374 or on the web www.sonyericsson.com/support

Screen image simulated. Sony is not responsible for lost data.

1. Ability to use this Bluetooth® enabled product with other devices may vary as not all Bluetooth devices are compatible.



I  style



Sony Ericsson P1i Smartphone

key features

- Integrated QWERTY keyboard and handwriting recognition
- Secure push email with Microsoft® Exchange ActiveSync®⁵
- 3.2 megapixel camera with business card scanner
- Media player with FM RDS radio
- 2.6 inch Touch Screen⁸
- Unlocked for GSM/GPRS 900/1800/1900⁶, UMTS 2100⁷ + WiFi 802.11b⁵



key technologies

Mobile office in your pocket : Take your office with you. Thanks to the Sony Ericsson P1i's smart office functions, you can edit office documents such as Microsoft® Word, Excel® or PowerPoint®, or check your calendar or contacts. Plus, the touchscreen lets you write notes with a stylus just as you would with a pen—transforming your handwriting into text.

Business Card Scanner : It's not just a great idea, but it's a time saver, too. Just scan and save cards as contacts while you're still traveling. Plus it's truly international: The P1i can handle cards in English, Chinese, German, French, Spanish, Italian, Portuguese and Swedish.

After work compatible : When you unwind after work, the Sony Ericsson P1i stays on duty. Listen to music? Snap a picture with the 3.2 megapixel camera. Or just relax with a game.



Sony Ericsson

Sony Ericsson P1i Smartphone

specifications

Audio

Music Player: Media Player
Unsecured Format(s) Supported: AAC, AAC+, eACC+, MP3, MP4, M4A, 3GP, WAV
Tuner Type: FM Radio
Ringtones: Music tones (MIDI, iMelody, MP3, MP4, AAC, AAC+, eAAC+, WAV), Polyphonic 40, PlayNow™ 2.0, TrackID™⁵, MusicDJ™
Stereo Bluetooth® Capability: A2DP⁴

Convenience

Alarm: Alarm Clock
Calculator: YES
Calendar: YES
Menu Options: Touchscreen, Icon desktop & Soft Key Menu Control
Flight Mode: YES
Message Folder(s): SMS, MMS, push E-mail via Microsoft® Exchange ActiveSync®^{6,5} + support for various 3rd party applications, Predictive text input, Quickoffice®
Speakerphone: YES
Vibrating Alert: YES

Display

Resolution: 240 x 320 Pixel

General

Color: 262K TFT Color Screen
Supported Network(s): GSM/GPRS 900/1800/1900⁶, UMTS 2100⁷, WiFi 802.11b⁵

Graphics

Format(s) Supported: JPEG, GIF, WBMP, PNG, SVG

Inputs and Outputs

Infrared Port: YES
USB Port(s): USB 2.0 support

Memory

Type: Memory Stick Micro™ (M2™) media
Memory Size: 160MB¹ Internal Memory, 512MB³ Memory Stick Micro™ (M2™) media

Power

Talk Time: up to 10 hours²,
Standby time: up to 440 hours²

Video

Format(s) Supported: .3gp, MPEG-4, Real Audio Video
Playback: Video player
Video Streaming: YES
Video Telephony: YES⁷

Hardware

Camera: 3.2 megapixel with Auto Focus, 3X Digital Zoom, Photo light, Video record, Picture blogging⁵, Business card scanning

Software

Internet Services: Opera™ web browser with RSS⁵
Gaming: Java™, 3D

1. Actual free memory may vary due to phone pre-configuration.
2. Actual battery life will vary based on network, product settings, usage patterns, battery and environmental conditions.
3. 450 MB available. A portion of the memory is used for data management functions.
4. Ability to use this Bluetooth® enabled product with other devices may vary as not all Bluetooth® devices are compatible.
5. Internet connection required. Some features may require additional fees.
6. Network coverage and handset feature support may not be available in all areas and may not be offered by all service providers. Services and features supported by this device may be subject to additional fees or requirements. Check with you service provider for service availability, feature support and applicable charges.
7. This feature is NOT supported in the US. Check with your service provider to determine frequency support and network coverage for this device.
8. Viewable area measured diagonally.
9. P1i supports the following unsecured formats: AAC, AAC+, eACC+, MP3, MP4, M4A, 3GP, WAV.



Z-310aBlack Sony Ericsson Phone

key features

- Icon display and light effects
- Point-and-shoot VGA camera
- Picture messaging⁴
- Access NetFront™ web browser¹
- Bluetooth® connectivity²
- Unlocked for GSM/GPRS/EDGE 850/1800/1900⁶



key technologies

Icon display and light effects : The icon display shows at a glance what's going on with your phone. Light effects personalize your phone and identify incoming callers.

Point-and-shoot VGA camera : Your camera is always with you when you carry the Z310a. Take and send snapshots via picture messaging⁴.

Access NetFront™ Web browser : Surf the mobile internet¹ for information and entertainment. The Z310a browser resizes the page to fit your screen.

Bluetooth® connectivity² : Go truly handsfree with Bluetooth® headsets² or car handsfree systems.



Sony Ericsson

Z-310aBlack

Sony Ericsson Phone

specifications

Audio

Music Player: None

Convenience

Alarm: Alarm Clock

Calculator: YES

Calendar: YES

Menu Options: Icon desktop,

Navigation pad

Flight Mode: NO

Message Folder(s): SMS, MMS, Push

E-mail¹, Predictive text input

Speakerphone: YES

Vibrating Alert: YES

Display

Resolution: 128 x 160 Pixel

General

Supported Network(s): GSM/GPRS/
EDGE 850/1800/1900⁶

Graphics

Format(s) Supported: JPEG, GIF

Inputs and Outputs

Infrared Port: YES

USB Port(s): YES

Memory

Type: Internal memory only

Memory Size: Internal memory 14MB³

Power

Estimated Battery Life:

Talk time: up to 7 hours⁵,

Standby time: up to 300 hours⁵

Video

Playback: None

Audio Features

Ringtones: Music tones (MIDI, mp3),

Polyphonic 24, MusicDJ™

General Specifications

Color: 65K CSTN Color Screen

Data Transfer Rate: GSM, GPRS, EDGE

Hardware

Camera: VGA camera,
Picture blogging¹

Software

Internet Services: Access NetFront™

3.3 web browser with RSS¹

Gaming: Java™

1. Internet connection required. Some features may require additional fees.
2. Ability to use this Bluetooth® enabled product with other devices may vary as not all Bluetooth® devices are compatible.
3. Actual free memory may vary due to phone pre-configuration.
4. Standard picture messaging rates apply
5. Actual battery life will vary based on network, product settings, usage patterns, battery and environmental conditions
6. Network coverage and handset feature support may not be available in all areas and may not be offered by all service providers. Services and features supported by this device may be subject to additional fees or requirements. Check with you service provider for service availability, feature support and applicable charges.



K-790

Sony Ericsson 3.2 Megapixel Cyber-shot™ Camera Phone

key features

- 3.2 Megapixel Cyber-shot™ camera with Auto Focus
- BestPic™ technology - pick the best, delete the rest
- Music and video player
- Xenon flash - real photographic light
- PictBridge™ compatible - easy photo printing
- Memory Stick Micro™ (M2™) media support
- Bluetooth®4 connectivity



key technologies

Take Great Pictures : It's hard to take a bad picture with the K790 and BestPic™ technology. BestPic™ technology gives you your choice of the best shot. Four of the resulting images are shot immediately before the camera key is fully pressed and the remaining four immediately after to complete your shot. Now you can pick the best and delete the rest.

Xenon Flash Unit : The K790 features a built-in xenon flash unit which gives you real photographic light where lighting conditions are not optimal. This camera phone also helps eliminate red eye and comes equipped with a camera stabilizer function that compensates small moves of your hand when you're taking a picture and shooting video.

Picture blogging : When you've taken a photo, you can share it straight away using Bluetooth®4, multimedia messaging or blog it. Take a photo, add text and send it to a blog site. The site is created the first time you blog a photo and in return get a text message with the web address and log in data. Send the address to friends and share your life in pictures.

Print Your Photos without a PC : The K790 supports the PictBridge™ standard which makes printing pictures from your camera phone a breeze. Connect the phone directly to a PictBridge-compliant printer using the USB cable and print your photos without a PC. Navigate the camera functions using the photo keys located on each side of the K790's 2 inch QVGA color screen.

Multitasking made easy : With proven EDGE technology built-in, mobile web browsing, photo blogging, downloading of multimedia content and video streaming become a pleasant experience. Visit real internet sites with the Access NetFront™ browser and subscribe to automatic news updates with RSS Feeds. Be engaged in a call or listen to the music player or FM radio while you search for information on the web.



Sony Ericsson

K-790

Sony Ericsson 3.2 Megapixel Cyber-shot™ Camera Phone

specifications

Audio

Format(s) Supported : MP3, AAC, AAC+, eAAC+
Tuner Type : FM radio
Music Player : Media Player

Convenience

Alarm : Alarm Clock
Calculator : YES
Calendar : YES
Menu Options : Icon desktop, Joystick
Message Folder(s) : SMS, MMS, E-mail,
Predictive text input
Speakerphone : YES
Vibrating Alert : YES
Flight Mode: YES

Display

Resolution : 240 x 320 Pixels

General

Color : 262K TFT Color Screen
Data Transfer Rate : GSM, GPRS, EDGE

Graphics

Format(s) Supported : JPEG, GIF, WBMP, PNG, SVG

Inputs and Outputs

Infrared Port : YES
USB Port(s) : YES

Memory

Type : Memory Stick Micro™ media (M2™)
Memory Size : 64MB¹ Internal Memory, 64MB³ Memory Stick Micro™ media (M2™) (Memory Stick Micro™ of up to 1GB supported.)

Networking/Modem

Bluetooth® Technology : Bluetooth® 2.0

Power

Talk time: up to 7 hours²
Standby time: up to 350 hours²

Video

Playback : Video player
Format(s) Supported : .3gp, MPEG-4, WMV, Real

Audio Features

Ringtones : Music tones (MP3/AAC), Polyphonic 72, MusicDJ™, PlayNow™
Stereo Bluetooth® Capability : A2DP⁴

General Features

Supported Network(s) : EDGE, GSM 850, GSM 1800, GSM 1900

Hardware

Camera : Cyber-shot™ 3.2 megapixel with Auto Focus, Xenon flash, Red eye reduction, 16x Digital Zoom, BestPic™, Image and video stabilizer, PictBridge™, Scene modes, Video record, Viewfinder

Software

Internet Services : Access NetFront™ web browser with RSS
Gaming : Java™, 3D

1. Actual free memory may vary due to phone pre-configuration.
2. Actual battery life will vary based on network, product settings, usage patterns, battery and environmental conditions.
3. Available storage capacity may vary and a portion of the memory is used for data management functions. Memory Stick transfer speeds vary by and are dependant upon host hardware devices.
4. Ability to use this Bluetooth® enabled product with other devices may vary as not all Bluetooth® devices are compatible.



Cyber-shot

K-550iWhite & K-550iBlack Sony Ericsson 2.0 Megapixel Cyber-shot™ Camera Phone

key features

- 2.0 Megapixel Cyber-shot™ camera with Auto Focus
- Picture blogging & PictBridge™ printing
- Music player, video player & FM Radio
- Stereo Bluetooth®¹ technology (A2DP)
- GSM/GPRS/EDGE 850/900/1800/1900



key technologies

Cyber-shot™ Camera : Share a little happiness. The 2 megapixel K550i Cyber-shot camera phone is ideal for catching and sharing smiles on the fly. Cyber-shot digital camera technology gives you mobile imaging that's just as good as your digital camera.

PictBridge™ Compatibility : For easy photo printing, the K550i supports the PictBridge standard. Connect the phone directly to a PictBridge-compliant printer using the USB cable and print your photos without a PC.

Blog Your Life : Take or choose a photo, add some text and send it to your blog site for friends and family to enjoy. Don't have a blog site? The K550i helps you create one.

Media Player & FM Stereo Radio : Enjoy your streamed and recorded video and music using the integrated media player. The K550i also completes your music listening experience with an FM stereo radio with RDS.

Bluetooth®¹ Stereo Music Streaming : Stream high-quality stereo music from the K550i to your compatible Bluetooth® headset or other Bluetooth® devices¹. It also lets you use handsfree technology and allows other Bluetooth®-enabled devices to communicate with your phone wirelessly from up to 32 feet away¹.



Sony Ericsson

K-550iWhite & K-550iBlack

Sony Ericsson 2.0 Megapixel Cyber-shot™ Camera Phone

specifications

Audio

Format(s) Supported : AAC, AAC+, eACC+, MP3, MP4, AMR NB, AMR WB, WAV, SP-MIDI, G-MIDI, RealAudio 8, WMA 8, WMA 9, Mobile XMF 1.0
Tuner Type : FM Radio
Music Player : Media Player

Convenience

Alarm : Alarm Clock
Menu Options : Icon desktop, Navigation pad
Calculator : YES
Calendar : YES
Message Folder(s) : SMS, MMS, E-mail,
Predictive text input
Speakerphone : YES
Vibrating Alert : YES
Flight Mode : YES

Display

Resolution : 176 x 220 Pixel

General

Data Transfer Rate : GSM, GPRS, EDGE
Color : 262K TFT Color Screen

Graphics

Format(s) Supported : JPEG, GIF, WBMP, PNG, SVG

Inputs and Outputs

Infrared Port : YES
USB Port(s) : YES

Memory

Type : Memory Stick Micro™ (M2™) media (media sold separately)
Memory Size : 64MB Internal Memory²

Networking/Modem

Bluetooth® Technology : Bluetooth® 2.0

Power

Talk time: up to 7 hours⁴,
Standby time: up to 350 hours⁴

Video

Format(s) Supported : .3gp, MPEG-4
Playback : Video player

Audio Features

Ringtones : Music tones (MP3/AAC), Polyphonic 72, MusicDJ™, PlayNow™, Track ID™
Stereo Bluetooth® Capability : A2DP¹

General Features

Supported Network(s) : EDGE, GPRS, GSM 850, GSM 900, GSM 1800, GSM 1900

Hardware

Camera : Cyber-shot™ 2.0 megapixel with Auto Focus, Advanced LED Photo Light, 4x Digital Zoom, Frames, Video record, Horizontal Camera UI, PictBridge, Active Lens Cover, Picture Blogging

Software

Internet Services : Access NetFront™ 3.3 web browser with RSS
Gaming : Java™, 3D

1. Ability to use this Bluetooth® enabled product with other devices may vary as not all Bluetooth® devices are compatible.
2. Actual free memory may vary due to phone pre-configuration.
3. Weights and measurements are approximate and may vary.
4. Actual battery life may vary based on product settings, usage patterns, battery and environmental conditions.



Cyber-shot

W-810

Sony Ericsson Walkman™ Phone

key features

- Complete Walkman® music experience
- Memory Stick PRO Duo™ media support
- 2.0 Megapixel camera with Auto Focus
- Email, text and picture messaging
- EDGE - fast mobile Internet⁵
- Bluetooth®⁴ connectivity



key technologies

Complete Walkman® Music Kit : Folders and customized playlists help you keep track of your tunes. The 512 MB³ Memory Stick PRO Duo™ media provides enough memory for up to 175 of your favorite songs. Enjoy quality entertainment around the clock with a built-in FM radio with RDS (Radio Data System).

Music to Your Phone : Disc2Phone™ music copying software is supplied in the W810i kit and it's easy to transfer songs from your favorite CDs, and PC music folders.

Take Great Pictures : The built-in 2 megapixel digital camera with auto-focus takes excellent photos and when you need to catch some action, the W810i has video too. Sharing images and other phone content is easy. You can use Bluetooth® technology⁴ or multimedia messaging when you want to send images and video to family, friends and colleagues.

Fast Mobile Internet⁵ : Wherever you are, you have high-speed access to the internet. EDGE technology makes surfing the mobile internet fast and a full-function internet browser lets you view all your favorite websites as you go⁵.

Stay In Touch : In addition to SMS text messaging, you can send text, pictures, video and music to another phone or e-mail address. Access your inbox with the integrated e-mail client wherever you go.



Sony Ericsson

W-810

Sony Ericsson Walkman™ Phone

specifications

Audio

Music Player: WALKMAN® player 1.0
Format(s) Supported: MP3, AAC
Tuner Type: FM radio

Convenience

Alarm: Alarm Clock
Calculator: YES
Calendar: YES
Menu Options: Icon desktop,
Navigation pad
Message Folder(s): SMS, MMS, E-mail,
Predictive text input
Speakerphone: YES
Vibrating Alert: YES

Display

Resolution: 176x220 Pixel

General

Color: 262K TFT Color Screen
Data Transfer Rate: GSM, GPRS, EDGE

Graphics

Format(s) Supported : JPEG, GIF, WBMP,
PNG, SVG

Inputs and Outputs

Infrared Port : YES
USB Port(s) : YES

Memory

Type : Memory Stick PRO Duo™ media
Memory Size: Comes with 512MB³ Memory
Stick PRO Duo™ media included
(Memory Stick PRO Duo media of up to
2GB supported)

Networking/Modem

Bluetooth® Technology:⁴ Bluetooth®

Power

Talk time: up to 8 hours²
Standby time: up to 350 hours²

Video

Format(s) Supported : .3gp, MPEG-4
Playback: Video player

Audio Features

Ringtones: Music tones (MP3/AAC),
Polyphonic 40, MusicDJ™, PlayNow™

General Features

Supported Network(s): EDGE, GSM 850,
GSM 900, GSM 1800, GSM 1900

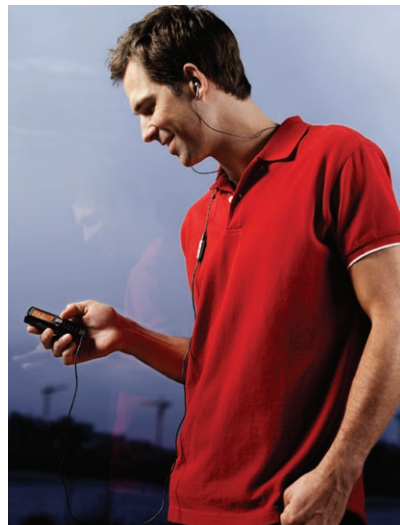
Hardware

Camera : 2.0 megapixel with Auto Focus,
4x Digital Zoom, Frames, Video record, View-
finder, Photo light

Software

Internet Services : Access NetFront™
web browser
Gaming : Java™, 3D

1. Actual free memory may vary due to phone pre-configuration.
2. Actual battery life will vary based on network, product settings, usage patterns, battery and environmental conditions.
3. The "Memory Stick PRO Duo™" capacity is composed of the actual usable capacity and system files. The user capacity of 512MB is approx. 460MB.
4. Ability to use this Bluetooth® enabled product with other devices may vary as not all Bluetooth® devices are compatible.
5. Internet connection required. Some features may require additional fees.



W-950

Sony Ericsson 4GB¹ Walkman™ Music Phone

key features

- 4GB¹ Internal Memory
- Complete Walkman® music experience
- 2.6 inches Touch Screen⁵
- Opera™ Web Browser
- Push email ready
- Bluetooth®³ connectivity



key technologies

4GB¹ Internal Memory: The W950i has an impressive 4GB¹ of internal flash memory allowing you to store up to 4,000 songs. Supported file formats include MP3 and AAC.

Complete Walkman® music kit: In addition to a built-in FM radio, the W950i comes with a music kit that includes everything you need to upload your music to your phone. The kit contains music management software, USB cable and a high-quality stereo headset.

240 x 320 Pixels Touch Screen: Navigating through music, images and video has never been easier. The large 2.6" touch screen display⁵ makes exploring artists, albums, tracks and photos a snap.

Fast Mobile Internet⁶: Wherever you are, you have high-speed access to the internet. The Opera® 8.0 web browser makes surfing your favorite websites easy⁶. Using the touch screen and stylus, you can click on links and scroll content, as you would with a mouse.

Push E-mail Ready : The Sony Ericsson W950i Walkman™ phone supports standard push e-mail (operator dependant). This is a solution that brings e-mail straight to your phone and once new messages come in, you can take action instantly.

PC and Bluetooth®³ Connectivity : Easily move images and music between your W950i and your PC by connecting the USB cable (supplied in kit) to enjoy drag and drop functionality. Use Bluetooth® technology³ to send images to other phones or hook up a headset.



Sony Ericsson

W-950

Sony Ericsson 4GB¹ Walkman™ Music Phone

specifications

Audio

Music Player : WALKMAN® player 2.0,
Album art
Format(s) Supported : MP3, AAC, AAC+,
eAAC+
Tuner Type : FM radio

Convenience

Alarm : Alarm Clock
Calculator : YES
Calendar : YES
Menu Options : Touchscreen, Icon desktop,
JogDial
Message Folder(s) : SMS, MMS, E-mail
(including push), Predictive text input
Speakerphone : YES
Vibrating Alert : YES

Display

Resolution : 240 x 320 Pixel

General

Color : 262K TFT Color Touchscreen
Data Transfer Rate : GSM, GPRS, UMTS⁴,
WCDMA

Graphics

Format(s) Supported : JPEG, GIF, WBMP,
PNG, SVG

Inputs and Outputs

Infrared Port : YES
USB Port(s) : YES

Memory

Type : Internal Memory only
Memory Size : Internal Memory 4GB¹

Networking/Modem

Bluetooth® Technology³ : Bluetooth® 2.0

Power

Talk time GSM: up to 7.5 hours²,
Standby time GSM: up to 340 hours²,
Talk time UMTS: up to 2.5 hours²,
Standby time UMTS: up to 250 hours²

Video

Format(s) Supported : .3gp, MPEG-4, Real
Playback : Video player

Audio Features

Ringtones : Music tones (MP3/AAC),
Polyphonic 40, MusicDJ™, PlayNow™
Stereo Bluetooth® Capability : A2DP³

General Features

Supported Network(s) : GSM 900, GSM
1800, GSM 1900, UMTS 2100⁴

Software

Internet Services : Opera™ 8 web
browser with RSS
Gaming : Java™, 3D

1. Actual free memory may vary due to phone pre-configuration.
2. Actual battery life will vary based on network, product settings, usage patterns, battery and environmental conditions.
3. Ability to use this Bluetooth® enabled product with other devices may vary as not all Bluetooth® devices are compatible.
4. UMTS functionality of this device is NOT supported in the U.S. Check with your service provider to determine frequency support and network coverage for this device.
5. Viewable area measured diagonally..
6. Internet connection required. Some features may require additional fee.



W-880iBlack & W-880iSilver Sony Ericsson Slim Walkman™ Phone

key features

- Slim Walkman™ phone, only 9.4 mm thick
- Walkman® 2.0 media player with album art
- Stereo Bluetooth®¹ technology (A2DP)
- 2.0 megapixel camera, Picture blog & PictBridge™
- GSM/GPRS 900/1800/1900 , UMTS 2100⁵



key technologies

Ultra-Thin, Steel Style : Less than half an inch thin and with a casing of stainless steel, the W880i is designed for supreme durability and killer looks. And the Walkman® player 2.0 is never more than a click away.

Complete Walkman® Experience : The W880i comes with all you need for a full musical experience. It includes a stereo handsfree device, PC software and a 1GB² Memory Stick Micro™ (M2™) media.

Bluetooth® Stereo Music Streaming¹ : Stream high-quality stereo music from the W880i to your compatible Bluetooth® headset or other Bluetooth® devices¹. It also lets you use hands-free technology and allows other Bluetooth®-enabled devices to communicate with your phone wirelessly from up to 32 feet away¹.

Integrated Camera : Take pictures with the built-in digital camera with screen viewfinder, dedicated menus and direct interaction with in-phone imaging and messaging features.

Blog Your Life : Take or choose a photo, add some text and send it to your blog site for friends and family to enjoy. Don't have a blog site? The W880i helps you create one.



Sony Ericsson

W-880iBlack & W-880iSilver

Sony Ericsson Slim Walkman™ Phone

specifications

Audio

Music Player : Walkman® player 2.0
Format(s) Supported : AAC, AAC+, eACC+, MP3, MP4, AMR NB, AMR WB, WV, WAV, SP-MIDI, G-MIDI, RealAudio 8, WMA8, WMA9, Mobile XMF 1.0

Convenience

Alarm : Alarm Clock
Calculator : YES
Calendar : YES
Menu Options : Icon desktop, Navigation pad
Message Folder(s) : SMS, MMS, E-mail, Predictive text input
Speakerphone : YES
Vibrating Alert : YES
Flight Mode : YES

Display

Resolution : 320 x 240 Pixel

General

Data Transfer Rate : GSM, GPRS, UMTS⁵
Color : 262K TFT Color Screen

Graphics

Format(s) Supported : JPEG, GIF, WBMP, PNG, SVG, Animated GIF, MNG, BMP

Inputs and Outputs

USB Port(s) : YES

Memory

Type : Memory Stick Micro™ (M2™) media
Memory Size : 16MB³ Internal Memory, 1GB² Memory Stick Micro™ media (M2™)
(Memory Stick Micro™ (M2™) of up to 1GB supported)

Networking/Modem

Bluetooth® Technology : Bluetooth® 2.0¹

Power

Talk time: up to 6.5 hours⁴
Standby time: up to 425 hours⁴

Video

Format(s) Supported : .3gp, MPEG-4
Playback : Video player

Audio Features

Ringtones : Music tones (MP3/AAC), Polyphonic 72, Music DJ™, PlayNow™, TrackID™
Stereo Bluetooth® Capability : A2DP¹

General Features

Supported Network(s) : GSM 900/1800/1900, UMTS 2100⁵

Hardware

Camera : 2.0 megapixel, 2.5x Digital Zoom, Frames, Video record, Horizontal Camera UI, Picture Blogging, PictBridge, Face Warp, Video DJ™, Photo DJ™

Software

Gaming : Java™, 3D
Internet Services : Access NetFront™ 3.3 web browser with RSS

1. Ability to use this Bluetooth® enabled product with other devices may vary as not all Bluetooth® devices are compatible.
2. The "Memory Stick Micro" capacity is composed of the actual usable capacity and system files. The user capacity of 1GB is approx. 900MB.
3. Actual free memory may vary due to phone pre-configuration.
4. Actual battery life will vary based on network, product settings, usage patterns, battery and environmental conditions.
5. UMTS functionality of this device is NOT supported in the U.S. Check with your service provider to determine frequency support and network coverage for this device.



W-580iGray & W-580iWhite Sony Ericsson Slider Walkman™ Phone

key features

- Slim Walkman™ Slider phone, only 14 mm thick
- Walkman® Player 2.0 with album art
- Stereo Bluetooth® technology (A2DP)⁴
- 2.0 megapixel camera with blogging support⁶
- Pedometer and fitness applications
- Unlocked for GSM/GPRS/EDGE 850/900/1800/1900⁵



key technologies

Ultra Thin. Ultra Hot.

At only 14mm thick, the sleek and stylish W580i impresses everyone you meet.

Street Style, Walkman® Experience

With a 512 MB¹ Memory Stick™ Micro (M2™) media included, there's easily enough memory to store hundreds of banging tunes just for you.

Integrated Fitness Applications

Count your steps, count your calories, and track your fitness. Use the W580i as your personal trainer to improve and track your health.

Music Recognition

Who sings that? What was the name of that spin? Use TrackID™ technology⁶ to find out the dirt on the songs you don't recognize. Hold your phone up to the music and get the title and artist you're grooving to⁷.

Snap and Blog⁶ instantly

With an impressive 2.0 megapixel camera, take great pictures wherever, whenever. Send them to your friends⁷. Upload them to your blog⁶. Regardless of how you use your W580i, the whole world can see your street style.



Sony Ericsson

W-580iGray & W-580iWhite

Sony Ericsson Slider Walkman™ Phone

specifications

Audio

Tuner Type: FM Radio
Music Player: Walkman® Player 2.0
Unsecured Format(s) Supported: AAC, AAC+, eACC+, MP3, MP4, AMR NB, AMR WB, WAV, SP-MIDI, G-MIDI, RealAudio 8, WMA 8, WMA 9 and Mobile XMF 1.0

Convenience

Alarm: Alarm Clock
Calculator: YES
Calendar: YES
Flight Mode: YES
Menu Options: Icon desktop,
Navigation pad
Message Folder(s): SMS⁷, MMS, E-mail⁶,
Predictive text input
Speakerphone: YES
Vibrating Alert: YES

Display

Resolution: 240 x 320 Pixel

General

Data Transfer Rate: GSM, GPRS, EDGE
Color: 262K TFT Color Screen

Graphics

Format(s) Supported: JPEG, GIF, WBMP,
PNG, SVG

Inputs and Outputs

Infrared Port: YES
USB Port(s): USB 2.0 support

Memory

Type: Memory Stick Micro™ (M2™) media
Memory Size: 12MB³ Internal Memory,
512MB¹ Memory Stick Micro™ (M2™) media
(Memory Stick Micro™ (M2™) of up to
2GB supported)

Networking/Modem

Bluetooth® Technology: Bluetooth® 2.0⁴

Power

Talk Time: up to 9 hours²,
Standby time: up to 370 hours²,
Music Listening Time: up to 20 hours²

Video

Playback: Video player
Format(s) Supported: .3gp, MPEG-4

Audio Features

Ringtones : Music tones (MP3/AAC), Poly-
phonic 72, Music DJ™, PlayNow™ 3.0, TrackID™⁶
Stereo Bluetooth® Capability: A2DP⁴

General Features

Supported Network(s) : GSM
850/900/1800/1900, EDGE⁵

Hardware

Camera: 2.0 megapixel, 4x Digital Zoom,
Frames, Video record, Picture blogging⁶,
VideoDJ™, PhotoDJ™, PictBridge

Software

Gaming: Java™, 3D
Internet Services: Access NetFront™ 3.3 web
browser with RSS⁶

1. 450MB available. A portion of the memory is used for data management functions.
2. Actual battery life will vary based on network, product settings, usage patterns, battery and environmental conditions.
3. Actual free memory may vary due to phone pre-configuration.
4. Ability to use this Bluetooth® enabled product with other devices may vary as not all Bluetooth® devices are compatible.
5. Network coverage and handset feature support may not be available in all areas and may not be offered by all service providers. Services and features supported by this device may be subject to additional fees or requirements. Check with you service provider for service availability, feature support and applicable charges.
6. Some features rely on Internet services which may require a fee. As with all wireless products, actual performance will vary depending on environment.
7. Compatible service plan required. Additional charges may apply. See your service provider for details.



W-200aBlack Sony Ericsson Walkman™ Phone

key features

- Complete Walkman® experience
- Up to 18 hrs of music or 7 hrs of talk²
- VGA camera with 4x digital zoom
- FM radio with Radio Data System
- Memory Stick Micro™ (M2™) media support
- Unlocked for GSM/GPRS 850/1800/1900³



key technologies

Complete Walkman® Music Kit : Bring your music with you on the W200a Walkman™ phone. You always have one-press instant access to your favorite tracks. It comes with everything you need to upload your music from your PC to your phone⁴: music management software, USB cable and high-quality stereo headset.

VGA camera with 4x digital zoom : Your camera is always with you when you carry the W200a. Take and send snapshots via picture messaging⁵.

Memory Stick Micro™ (M2™) media support : Love a lot of music- Extend your W200a's memory with the smallest memory card on the market, Memory Stick Micro™ (M2™) media (up to 2GB supported).

Triple band GSM/GPRS 850/1800/1900³ are supported, even in other countries where there is GSM service.



Sony Ericsson

W-200aBlack

Sony Ericsson Walkman™ Phone

specifications

Audio

Ringtones: Music tones (MIDI, mp3, AAC), Polyphonic 40, MusicDJ™

Convenience

Alarm: Alarm Clock
Calculator: YES
Calendar: YES
Menu Options: Icon desktop, Joystick
Flight Mode: YES
Message Folder(s): SMS, MMS, Push E-mail⁷, Predictive text input
Speakerphone: YES
Vibrating Alert: YES

Display

Resolution: 128 x 160 Pixel

General

Supported Network(s): GSM/GPRS
850/1800/1900³
Data Transfer Rate: GSM, GPRS

Graphics

Format(s) Supported: JPEG, GIF, WBMP, PNG, SVG

Inputs and Outputs

Infrared Port: YES
USB Port(s): YES

Memory

Type: Memory Stick Micro™ (M2™) media
Memory Size: 25MB¹ Internal Memory , 128MB⁶ Memory Stick Micro™ (M2™) media

Power

Talk time: up to 7 hours²,
Standby time: up to 300 hours²

Video

Format(s) Supported: .3gp, MPEG-4
Playback: Video player

Audio Features

Music Player: Walkman® Player 1.0
Unsecured Format(s) Supported:
AAC, MP3, MP4, M4A, 3GP, WAV
Tuner Type: FM Radio

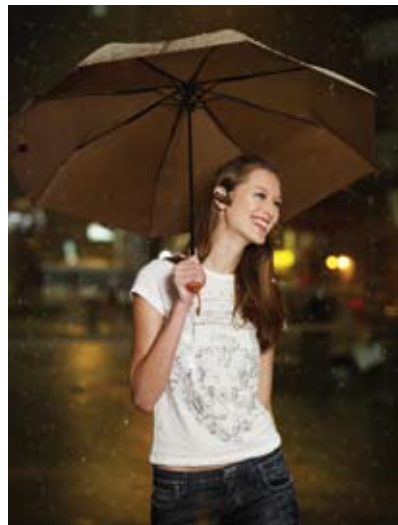
Hardware

Camera: VGA camera, 4x Digital Zoom

Software

Internet Services: Access NetFront™ 3.3 web browser⁷
Gaming: Java™, 3D

1. Actual free memory may vary due to phone pre-configuration.
2. Actual battery life will vary based on network, product settings, usage patterns, battery and environmental conditions.
3. Network coverage and handset feature support may not be available in all areas and may not be offered by all service providers. Services and features supported by this device may be subject to additional fees or requirements. Check with you service provider for service availability, feature support and applicable charges.
4. W200a Sony Ericsson Walkman™ Phone supports the following audio types: AAC, MP3, MP4, M4A, 3GP WAV.
5. Standard picture messaging rates apply.
6. 109MB available. A portion of the memory is used for data management functions.
7. Internet connection required. Some features may require additional fees.



I  gadgets

accessories

accessories



Speakers & Audio

MPS-70 Portable Speakers

- Portable sound for your compatible¹ Sony Ericsson mobile phone
- Powered by your phone's battery
- Included traveling case



Hook up these small, yet powerful portable speakers and let everyone enjoy your music collection. The Sony Ericsson MPS-70 speakers connect with your compatible¹ phone and instantly create a fun atmosphere. They sound great, have a modern design and run off your phone's battery so there's no need to carry an additional plug. A cable built into the speakers works as an FM-radio antenna so that you can use the radio on your phone to tune into your favorite music or stay up-to-date with the latest news. And you can keep them safe while traveling with the included traveling case.

1. MPS-70 is compatible with the following Sony Ericsson mobile phones: K550, K610, K618, K750, K800, K810, M600, P990, V630, W200, W300, W550, W610, W700, W710, W800, W810, W850, W880, W900, W950, K790, W600, W830, W958, Z530, Z550, Z610, Z710, Z558.

MDS-70 Home Audio System

- Equipped with an amplifier, subwoofer and loudspeakers for the ultimate sound quality
- Unit charges the mobile phone battery
- Comes with a 2.5mm line-in connector and mini remote

Sporting a stylish design, the MDS-70 home audio system allows you to enjoy the music on your Walkman™ phone from anywhere in your compatible home or office. With amplified surround sound, full-range speaker units and a subwoofer for deep, rich bass, you'll hear the music on your mobile phone in a whole new way. The unit comes equipped with a 2.5mm line-in connector and mini remote. When you'd rather listen to your phone's FM radio, just connect the supplied wire antenna to hear radio programming.



Sony Ericsson

MDS-60 Music Desk Stand

- Intended for use with your Walkman™ phone
- Portable convenience thanks to its folding design
- Operates with an AC adaptor or 4 "AA" batteries¹
- Superior sound quality
- Holds & charges your phone

Share the music on your compatible phone with friends when you slip your Walkman™ phone into the MDS-60 music desk stand. Producing a rich sound, this device is perfect for your home, work or travels. Boasting a fashionable, foldable design, the music desk stand is the ultimate portable music accessory.

1. Batteries not included.



MBR-100 Bluetooth® Music Receiver

- For use with most stereo systems
- Perfect for home or on the road
- Glossy black finish

Plug the MBR-100 Sony Ericsson Bluetooth® music receiver into your compatible stereo and effortlessly play music from your compatible² mobile phone through the speakers of your system. Two cables are included, an RCA cable and a 3.5mm input cable, so virtually every audio device is compatible. Walk into the Bluetooth® range and use your phone as the remote control. Change tracks, pause and shuffle your music without leaving your seat. The MBR-100 is also rechargeable and portable, allowing you to take your tunes on the road as well.

1. Ability to use this Bluetooth® enabled product with other devices may vary as not all Bluetooth devices are compatible.
2. Please confirm product compatibility by checking the compatibility tab.



Speakers & Audio

MPS-75 Snap-on Speakers

- Great stereo sound quality with Neodymium speakers
- Ultra portable pocket-sized speakers
- Snap-on and play!
- Integrated FM radio antenna
- Design color matched to your Walkman™ phone
- Perfect for using at home or while traveling



Share your tunes, right from your phone. Plug the ultra-portable pocket-sized MPS-75 Snap-on Speakers into your compatible mobile phone and enjoy your phone's music collection in quality stereo audio. With integrated FM antenna, the system let you tune favorite radio stations. And the design complements your compatible Sony Ericsson Walkman™ phone's color scheme, for styling that looks as good as it sounds.

MDS-65 Music Desk Stand

- Superior sound quality
- Operates with AC adaptor or 6 "AA" batteries¹
- Integrated FM radio antenna
- Holds and charges your compatible phone
- Perfect for using at home or while traveling

The MDS-65 is a stylish new music desk stand that lets you play the music from your compatible Sony Ericsson mobile phone through four full-range Neodymium-magnet speakers. Just plug the stand into the electricity supply when you're inside, or run it on batteries¹ when you're hanging out in the garden or on the move. If your phone has its fast port connection positioned on the side or top instead of the base, you'll be glad to know that MDS-65 has a rotating holder, which allows you to read the phone's display without having to bend over sideways.

1. Batteries not included.



Sony Ericsson



Car Accessories

HCH-60 Car Holder

- Manage your calls while in your car
- Easily see the display
- Charge while you drive with cigarette lighter adaptor
- Compatible with the advanced car handsfree



View your Sony Ericsson mobile phone's display and charge the battery from your car with the HCH-60 car holder and cigarette lighter adapter (not included). Compatible with advanced handsfree devices, this holder frees up your hands during mobile conversations in your car. This car holder comes with an adjustable arm that allows you to easily put your phone where you can see it.

HCB-120 Bluetooth® Car Speakerphone

- Safe and easy to use
- Clear digital display with caller identity and tilt function
- Outstanding talk/standby times: up to 24/450 hrs²
- Digital noise cancellation/echo reduction (DSP)



Safely talk handsfree in your car. The HCB-120 Bluetooth® car speakerphone attaches securely and easily to your car's sun visor for convenient handsfree calling. Compact and light enough for car, office or home use, with a digital display featuring a built-in tilt sensor to show caller ID and leading talk/stand-by times (up to 24 and 450 hours respectively)², it's the perfect compliment to the Bluetooth® functionality in Sony Ericsson and other compatible brand handsets.

1. Ability to use this Bluetooth® enabled product with other devices may vary as not all Bluetooth devices are compatible.
2. Actual battery life may vary based on product settings, usage patterns, battery and environmental conditions.



Sony Ericsson



Bluetooth® Headsets



HBH-DS970 Stereo Bluetooth® Headset

- Displays the name or number of your caller
- Streams music and handles calls without wires
- Multipoint function allows connection of two compatible wireless devices simultaneously

Enjoy your music without the risk of missing incoming calls. The HBH-DS970 stereo Bluetooth® headset allows you listen to your music with superior sound quality, and when you receive a call, the display reveals the name or number of your caller. Supporting the multipoint function, the HBH-DS970 offers access to your entire library of music files on your computer, PDA or other Bluetooth® devices¹.

1. Ability to use this Bluetooth® enabled product with other devices may vary as not all Bluetooth devices are compatible.



HBH-GV435 Bluetooth® Headset

- Superior sound - Bluetooth® 2.0 technology, fast automatic volume adjustment, Digital Signal Processing (DSP)
- Ergonomics - Extraordinarily comfortable and light for all day use
- Long talk and standby times - All day use for busy people²
- Auto pairing™ - Dropping the PIN code without compromising security³
- Compatibility - compatible with most Bluetooth®-equipped mobile phones¹

Boasting an ergonomic lightweight design that fits snugly around your ear, the HBH-GV435 Bluetooth® headset is so comfortable, you might forget that you are wearing a headset at all. You will always be able to engage in crystal-clear conversations, because it's custom designed for optimal sound quality whether you work in a quiet or tumultuous environment.

1. Ability to use this Bluetooth® enabled product with other devices may vary as not all Bluetooth devices are compatible.
2. Actual battery life may vary based on product settings, usage patterns, battery and environmental conditions.
3. Autopairing available through select handsets



Sony Ericsson

HBH-IV835 Bluetooth® Headset

- Bluetooth® 2.0 wireless headset
- Auto Pairing™² recognition system
- Ultra-small, compact design
- Digital Signal Processing (DSP)



Free your hands with the convenience of Bluetooth® wireless technology. The innovative HBH-IV835 headset uses an advanced Auto Pairing™ feature to instantly recognize your compatible Sony Ericsson mobile phone as soon as you activate the Bluetooth® headset¹. And for improved sound quality of your conversations, Digital Signal Processing (DSP) automatically adjusts volume levels for maximum clarity. The glossy finish and ultra-small compact pen form are both comfortable and attractive.

1. Ability to use this Bluetooth enabled product with other devices may vary as not all Bluetooth devices are compatible.
2. Autopairing available through select handsets

HBH-PV702B & HBH-PV702W Bluetooth® Headset

- Bluetooth®¹ technology
- Fast port connector
- Affordable high performance headset



Talk hands-free for hours². The lightweight and compact HBH-PV702B Sony Ericsson Bluetooth® headset delivers reliable, high-quality audio and long talk times² so you can multi-task for longer than ever. Great-looking black finish and clean, pen-shaped design.

1. Ability to use this Bluetooth enabled product with other devices may vary as not all Bluetooth devices are compatible.
2. Actual battery life may vary based on product settings, usage patterns, battery and environmental conditions.

HBH-PV705SLV Bluetooth® Headset

- Extraordinary talk and standby times
- Lightweight and compact design
- Bluetooth® enabled¹



There's never been a better time to go wireless. Providing up to 12 hours of talk time and up to 300 hours of standby time², the HBH-PV705SLV Bluetooth® headset is the ideal handsfree device. Weighing less than half an ounce³, the HBH-PV705SLV comfortably wraps around your ear, allowing you to interact with the world outside of your phone conversation.

1. Ability to use this Bluetooth enabled product with other devices may vary as not all Bluetooth devices are compatible.
2. Actual battery life may vary based on product settings, usage patterns, battery and environmental conditions.
3. Non-metric weights and measurements are approximate and may vary.

HBH-PV705SE Bluetooth® Headset Style Edition

- Bluetooth® wireless headset
- Soft ear hook design
- Three design plates (included)

Experience the freedom of handsfree communication for your compatible Sony Ericsson mobile phone. The Bluetooth® headset included in the HBH-PV705SE style edition weighs approximately 0.49 ounces² (14 grams) and its soft ear hook design is comfortable for even the longest conversations. And since the ear speaker does not cover your ear canal, you can talk to people around you without having to take the headset off. A beautiful necklace strap and three different design plates that easily snap into place are included. Keep it all together with closeable black pouch with a silver floral pattern.

1. Ability to use this Bluetooth enabled product with other devices may vary as not all Bluetooth devices are compatible.

2. Non-metric weights and measurements are approximate and may vary.



Sony Ericsson

HBH-PV710 Bluetooth® Headset

- Extraordinary talk and standby times
- Lightweight and compact design
- Bluetooth® enabled¹



Talk longer with no hands. The HBH-PV710 Bluetooth® headset has leading talk and standby times of up to 12 and 300 hours² respectively, and is designed with rich, eye-catching colors. Its swiveling ear hook makes it comfortable to wear, and its silver body with glittering brown or red covers make it look great. Between calls it can hang on a supplied neck strap, easily slipping on when needed. Its classic pen-shaped form brings the microphone closer to the mouth for superior voice clarity.

1. Ability to use this Bluetooth enabled product with other devices may vary as not all Bluetooth devices are compatible.
2. Actual battery life may vary based on product settings, usage patterns, battery and environmental conditions.

HBV-100 Bluetooth® VoIP Kit

- Included handsfree Bluetooth® headset (HBH-PV705)
- USB adapter for PC connection
- Included standard charger (CST-61)



Free your hands with the HBV-100 Bluetooth® VoIP kit. It's the perfect way to stay in touch with friends and family over the internet. Comprised of a HBH-PV705 Bluetooth® headset and a Bluetooth® USB adaptor, you get all the normal benefits of using a Sony Ericsson Bluetooth® headset while making low cost internet calls. This sleek unit provides excellent sound quality and surprising comfort. The discreet Bluetooth® USB adaptor plugs into your Windows® XP PC and requires no complicated installation, plus it's compatible¹ with most global internet telephony software¹. The outstanding talk and standby times of the headset allow you take full advantage of low-cost internet calls.

1. Ability to use this Bluetooth enabled product with other devices may vary as not all Bluetooth devices are compatible.

Bluetooth® Headsets

HBH-GV435A Bluetooth® Headset

- Bluetooth® 2.0 + EDR (Enhanced Data Rate)¹
- Auto pairing™ technology¹ and easy redialing
- Superior sound - fast automatic volume adjustment, Digital Signal Processing (DSP)
- Ergonomics – Extraordinarily comfortable and light
- Talk/ Standby time: up to 10 hrs/ 300hrs²



Wear it an entire day and handle calls through the easy-to-use buttons of the headset. Digital echo reduction and noise cancellation in combination with fast automatic volume adjustment bring clear sound for both you and the person you are talking to. Auto pairing™ technology¹ and redialing are other practical features that make your mobile life a little easier.

1. Ability to use this Bluetooth® enabled product with other devices may vary as not all Bluetooth® devices are compatible.
2. Actual battery life will vary based on network, product settings, usage patterns, battery and environmental conditions.

HBH-IV840 Bluetooth® Headset

- Convenient neck strap with quick release
- Bluetooth® 2.0 + EDR (Enhanced Data Rate)¹
- Auto pairing™ technology¹ and easy redialing
- Ultra-small, compact and comfortable design
- Fast automatic volume adjustment
- Talk/ Standby time: up to 9 hrs/ 400hrs²



Featuring Auto pairing™ technology and easy redialing, this sleek headset functions as great as it looks. Digital Signal Processing (DSP) makes for crisp sound, and the natural design is compact and comfortable. What's more, it boasts up to nine hours of talk time² and uses digital noise cancellation and echo reduction to reduce irritating background noise.

1. Ability to use this Bluetooth® enabled product with other devices may vary as not all Bluetooth® devices are compatible.
2. Actual battery life will vary based on network, product settings, usage patterns, battery and environmental conditions.



Sony Ericsson

HBH-DS200 Stereo Bluetooth® Headset (A2DP)

- Battery status indicator
- 3.5 mm stereo jack – choose the headset to match the occasion
- Streams music and handles calls without wires¹
- Auto pairing™ technology and redialing¹
- Superior Sound – Bluetooth® 2.0 technology, fast automatic voice adjustment, Digital Signal Processing (DSP)¹
- Ergonomics – Extraordinarily comfortable and light
- Talk/ Standby/ Music time: up to 6 hrs/ 300hrs/ 6hrs²



When your phone is also your music player, you want to listen to your favorite tracks wherever you go with great sound. Pair HBH-DS200 headset to your mobile phone and enjoy superior sound in stereo. Attach it to your clothing with a sturdy clip and leave your phone in your pocket so that your music controls are always at hand. When a call comes in, the music will automatically mute. Answer or reject calls using the keys on the receiver. Once your call has finished, resume listening to your tracks and play/pause music with the receiver's practical music control keys.

1. Ability to use this Bluetooth® enabled product with other devices may vary as not all Bluetooth® devices are compatible.
2. Actual battery life will vary based on network, product settings, usage patterns, battery and environmental conditions.

HBH-DS980 Stereo Bluetooth® Headset (A2DP)

- Displays the track info and name or number of your caller on OLED display
- Streams music and handles calls without wires¹
- Multipoint function with Auto pairing™ technology and redialing¹
- Superior Sound – Bluetooth® 2.0 technology, fast automatic voice adjustment, Digital Signal Processing (DSP)¹
- Talk/ Standby/ Music time: up to 6 hrs/ 300hrs/ 6hrs²



Sleek and elegant, when you connect the HBH-DS980 to your mobile phone, you can listen to your favorite tunes without missing a call—the music automatically pauses when a call comes in. The Remote Control interface lets you control your music and main call functions—answer/end, voice dial, last number redial and volume. Designed with a magic mirror finish, this stylish headset boasts an OLED indicator for battery strength, charging, Bluetooth® status, caller ID, phonebook and track ID so that you can leave your phone in your pocket yet remain in control.

1. Ability to use this Bluetooth® enabled product with other devices may vary as not all Bluetooth devices are compatible.
2. Actual battery life will vary based on network, product settings, usage patterns, battery and environmental conditions.

Bluetooth® Watches

MBW-150EXEC Bluetooth® Watch - The Executive Edition



- Stainless steel bracelet
- Music track and caller information displayed²
- Discrete call handling and separate music control keys
- Volume adjustment for music and voice
- Bluetooth® 2.0 technology¹ and Auto pairing™ technology¹
- Water Resistance up to 30 meters
- Standby/Analog time: up to 7 days/ 7 days³

The Executive Edition design: The Executive Edition is perfect for the young professional who wants to stay focused on the job and stay connected at the same time. Its stainless steel bracelet looks at home in any business context without attracting undue attention. Enjoy the benefits of more efficient call handling and control your personal music selection without causing eyebrows to be raised.

MBW-150MUSIC Bluetooth® Watch - The Music Edition



- Matches Walkman™ phone with black & orange touches
- Music track and caller information displayed²
- Discrete call handling and separate music control keys
- Volume adjustment for music and voice
- Bluetooth® 2.0 technology¹ and Auto pairing™ technology¹
- Water Resistance up to 30 meters
- Standby/Analog time: up to 7 days/ 7 days³

The Music Edition design: The Music Edition has a black strap and face with orange details that match the Walkman™ phone. Young and funky-looking, this watch enables Remote Control functionality¹ on your compatible phone's media player, making it the ideal choice for music lovers. Enjoy the sounds you want to hear and skip the ones you don't, without even having to cross the room!

1. Ability to use this Bluetooth® enabled product with other devices may vary as not all Bluetooth® devices are compatible.
2. Track title will only work on Symbian phones with software release MR-E or later and on Java phones with software release MR-5 or later. Track title Display is not supported with the following phone models: K610, K618, K790, K800, K818, M600, P990, V630, W710, W830, W850, W950, W958, Z610, Z710. You can find which SW release you have on your phone or upgrade it to the new version by using Sony Ericsson Update Service.
3. Actual battery life will vary based on network, product settings, usage patterns, battery and environmental conditions.



Sony Ericsson



Chargers and Desk Stands

CDS-65

Desk Stand

- Connect and combine compatible accessories for charging, computer connectivity and handsfree all at the same time¹
- Integrated support bar to support use with touch screen phones and clam shell designs
- Supports fast port connector on base of phone



Designed to let the user manage their calls and their images with ease, the Desk Stand CDS-65 allows the user to speedily transfer photographs between phone and PC via USB (sold separately), or simply to synchronize data between the two whilst also charging the phone. Attach a portable handsfree (sold separately) and the user can enjoy voice conversations while transferring images and music. Ideal for a home or office environment.

1. AC charger, USB cable and handsfree accessories not included

CLA-11

Cigarette Lighter Adapter

- Charge your battery in less than two hours
- Charge your battery in less than two hours
- Lightweight and portable



Travel smart with the CLA-11 cigarette lighter adapter for your compatible Sony Ericsson mobile phone¹. In less than two hours, this adapter will recharge your battery even while you talk. For added convenience, a handsfree device may also be used while charging.

1. CLA-11 is compatible with the following Sony Ericsson mobile phones: J200, J300, K300, K500, F500, K600, K700, P910, P900, S700, S710, T290, T610, T616, T630, T637, Z200, Z500, Z600, Z800, V800, Z300.

CLA-60

Cigarette Lighter Adapter

- Charge your phone in your car
- Small, built-in lamp serves as flashlight
- Fast port system connector



Recharge your mobile phone's battery while driving with the CLA-60 cigarette lighter adapter. A must-have accessory for people on the go, this device plugs into your car's cigarette lighter, providing unlimited talk time as it charges your phone. A portable handsfree headset allows you to handle calls simultaneously and a small lamp serves as a flashlight when you need to check the roadmap.



Sony Ericsson

CMT-60 Travel Charger

- Plugs directly into an electrical outlet
- Charges you compatible mobile phone from two "AA" batteries
- Comes with protective cover



Add juice to your mobile phone's battery whenever you want with the CMT-60 micro travel charger. Perfect for the road warrior or globetrotter, this handy device plugs directly into an electrical outlet, or can charge your compatible phone from two "AA" batteries. The pocket-sized CMT-60 comes with a protective carrying cover so you can carry it with you wherever you go.

CST-13 Standard Charger

- Plugs into standard power outlets
- Talk while you charge
- Lightweight and portable



Be sure your compatible Sony Ericsson mobile phone¹ is ready for action with the CST-13 battery charger. Suited for standard power outlets, the CST-13 is the simple solution for keeping your mobile phone powered up for the day.

1. CST-13 is compatible with the following Sony Ericsson mobile phones: J200, J300, K300, K500, F500, K600, K700, P910, P900, S700, S710, T290, T610, T616, T630, T637, Z200, Z500, Z600, Z800, V800, Z300.

CST-75 Two Port Standard Charger

- Plugs into standard power outlets
- Two port design for versatile connectivity
- Charges as you talk



Stay powered up while you keep in touch with friends. And transfer music or files with your compatible Sony Ericsson mobile phone and the CST-75 two port standard charger. The extra port also allows you to connect a USB cable (sold separately) or external speakers while the other port is in use.

1. Please confirm product compatibility by checking the compatibility tab.

Batteries

BST-30 Standard Battery

- Powers your compatible¹ Sony Ericsson mobile phone
- Rechargeable and long-lasting



Add life to your compatible¹ Sony Ericsson mobile phone with this powerful rechargeable battery. The BST-30 will provide your phone with energy to communicate with friends and family for long periods of time².

1. BST-30 is compatible with the following Sony Ericsson mobile phones: T226, T227, T230, T237, Z200, Z500, J200, K300, K500, K700, T290, Z200.
2. Actual battery life may vary based on product settings, usage patterns, battery and environmental conditions.

BST-33 Standard Battery

- Powers your compatible¹ Sony Ericsson mobile phone
- Rechargeable and long-lasting



Power-up your compatible¹ Sony Ericsson mobile phone with this powerful rechargeable battery. The BST-33 will provide your phone with energy to communicate with friends and family for long periods of time².

1. BST-33 is compatible with the following Sony Ericsson mobile phones: K550, K550M, K800, K810, M600, P990, K790, K818c, W300, W580, W610, W660, W850, W880, W900, W950, W830, W888c, W958, Z530, Z610, Z750.
2. Actual battery life may vary based on product settings, usage patterns, battery and environmental conditions.

BST-37 Standard Battery

- Powers your compatible¹ Sony Ericsson mobile phone
- Rechargeable and long-lasting



Add life to your compatible¹ Sony Ericsson mobile phone with this powerful battery. The BST-37 will provide your phone with energy to communicate with friends and family for long periods of time² and can be easily recharged when needed.

1. BST-37 is compatible with the following Sony Ericsson mobile phones: J100, J110, J120, J220, J230, K200, K220, K610, K610M, K750, D750, K758, V630, W550, W600, W700, W710, W800, W810, Z520, Z525, Z710.
2. Actual battery life may vary based on product settings, usage patterns, battery and environmental conditions.



Sony Ericsson

Handsfree Headsets

HPM-20 Stereo Portable Handsfree Device

- High-quality, bud-style stereo headphones
- Two ear plugs
- One button handles your calls



Conduct long conversations while you run errands or take notes during a conference call with the HPM-20 handsfree device. Compatible with some K and S series mobile phones¹, this unit provides both stereo sound and a quality built-in microphone. A single button handles your calls.

1. HPM-20 is compatible with the following Sony Ericsson mobile phones: K700, S700, K500i, F500i.

HPM-75 Stereo Portable Handsfree

- Handsfree calling
- 3.5mm input jack
- Multiple bud sizes included



Enjoy the freedom to conduct long conversations handsfree or take notes during a conference call with the metal-constructed HPM-75 handsfree device. Compatible with select Sony Ericsson mobile phones¹. Single button call control; stereo sound; quality built-in microphone. Spare buds in a variety of sizes are included to ensure a comfortable fit for any ear.

1. Please confirm product compatibility by checking the compatibility tab.

HPM-82 Stereo Portable Handsfree

- Comfortable ear buds
- Compact, lightweight design
- Stereo sound



Listening to music on your phone shouldn't sound like you're listening long distance. The Walkman™-branded Sony Ericsson HPM-82 stereo handsfree system lets you hear your phone-based music with clear sound and a deep bass punch. The stylish and practical in-ear design looks great, while the provided multi-size ear-buds let you select a perfect fit and the 3.5 mm plug lets you use different earphones as you want. And with the stylish glossy-black remote control you can handle calls or browse your playlists while your phone stays in your pocket or purse¹.

1. Step to next/previous preset channel via Remote Control is not supported on the HPM-82 when used in FM radio mode with W810, W800, W700, W200, K750.

Cables

DCU-60 USB Cable

- Transfer music files and photos to your phone
- Synchronize your PC address book with your phone
- Download software from the internet¹



Building a bridge between your computer and your phone just got easier. The DCU-60 USB cable allows you to move pictures and transfer music files to and from your PC and mobile phone. You can also give your phone a fresh start by downloading new software from the internet¹.

1. Internet connection required.

MMC-60 Music Cables

- Practical music cable - RCA input
- Connects phone to compatible hi-fi system
- Plug and play solution - perfect for traveling



Give your music a smooth ride from your compatible Sony Ericsson mobile phone¹ to your compatible stereo system with the MMC-60 music cable. Just plug it in and enjoy your tunes on a grand scale. The practical RCA format means it's compatible with almost all home sound systems.

1. Please confirm product compatibility by checking the compatibility tab.

MMC-70 Music Cable

- Connects your phone to your compatible stereo
- Perfect for traveling
- 3.5mm input jack



Give your music a smooth ride. The MMC-70 music cable connects your compatible Sony Ericsson mobile phone¹ to your compatible stereo system. Just plug it in and enjoy your tunes on a grand scale. The practical 3.5mm input jack makes it compatible with almost all home sound systems.

1. Please confirm product compatibility by checking the compatibility tab.



Sony Ericsson

Mobile Phone Cases

IAC-25 Active Case

- Perfect solution for active people
- Can be attached to your arm, belt or bag
- Fits a wide range of phones¹



1. IAC-25 is compatible with the following Sony Ericsson mobile phones: J100, J110, J120, J220, J230, K200, K220, K310, K320, K510, K550, K610, K750, K800, K810, K790, V630, W200, W300, W550, W580, W610, W660, W700, W710, W800, W810, W850, W880, W600, W830, Z310, Z530, Z550, Z610, Z710, Z750, Z558.

ICE-25 Classic Mobile Phone Case

- Crafted of genuine leather
- Designed to fit horizontal phones¹
- Attaches to belt clip



1. ICE-25 is compatible with the following Sony Ericsson mobile phones: J100, J110, J120, J220, J230, K200, K220, K310, K320, K510, K550, K610, K750, K800, K810, K790, V630, W200, W580, W610, W660, W700, W800, W810, W850, W880, W830.

ICE-26 Classic Mobile Phone Case

- Crafted of genuine leather
- Designed to fit vertical phones¹
- Attaches to belt clip



phone sold separately

1. ICE-26 is compatible with the following Sony Ericsson mobile phones: W300, W710, Z310, Z530, Z550, Z610, Z710, Z750, Z558.

IEC-20 Executive Cell Phone Case

- Crafted of genuine leather
- Designed to fit horizontal phones¹
- Attaches to belt clip



1. IEC-20 is compatible with the following Sony Ericsson mobile phones: M600, P990, W950, W958.

Stylus Pack

- Efficient, accurate phone control
- Stores neatly in handset

Cruise through your menus, contact lists and text messages with this handy Stylus pack. The Stylus integrates seamlessly with your compatible Sony Ericsson mobile phone, storing neatly in the handset. Pack conveniently includes spare Stylus.



ISP-20 Built for your Ericsson P910 mobile phone

ISP-20 is compatible with the following Sony Ericsson mobile phones: P900, P910.



ISP-25 Built for your Ericsson P990 mobile phone

ISP-25 is compatible with the following Sony Ericsson mobile phones: P990.



ISP-30 Built for your Ericsson W950 mobile phone

ISP-30 is compatible with the following Sony Ericsson mobile phones: W950, W958.

Batteries

BST-36 Standard Battery

- Powers your compatible¹ Sony Ericsson mobile phone
- Rechargeable and long-lasting



Add life to your compatible¹ Sony Ericsson mobile phone with this powerful battery. The BST-36 will provide your phone with energy to communicate with friends and family for long periods of time and can be easily recharged when needed.

1. Please confirm product compatibility by checking the compatibility tab.

BST-38 Standard Battery

- Powers your compatible¹ Sony Ericsson mobile phone
- Rechargeable and long-lasting



Add life to your compatible¹ Sony Ericsson mobile phone with this powerful battery. The BST-38 will provide your phone with energy to communicate with friends and family for long periods of time and can be easily recharged when needed.

1. Please confirm product compatibility by checking the compatibility tab.

BST-40 Standard Battery

- Powers your compatible¹ Sony Ericsson mobile phone
- Rechargeable and long-lasting



Add life to your compatible¹ Sony Ericsson mobile phone with this powerful battery. The BST-40 will provide your phone with energy to communicate with friends and family for long periods of time and can be easily recharged when needed.

1. Please confirm product compatibility by checking the compatibility tab.



Sony Ericsson

Handsfree Headsets

HGE-100 GPS Navigation Enabler

- Turn by turn navigation by Wayfinder™ Earth
- Navigation with voice and text commands²
- “Tracker” GPS sports application - measure speed, distance, route and calories
- Locate yourself with GPS
- Stereo portable handsfree with remote control -- listen to your music without missing a call
- 3.5mm plug: switch your headset to fit the occasion
- All features powered by your compatible phone



So your phone didn't come with built-in GPS functionality— No problem. The GPS Enabler HGE-100 is a smart accessory that gives you and your compatible phone all the help you need. Just plug it in and start receiving maps, directions and GPS navigation services² from Wayfinder™, a leading GPS application that will get you where you want to go¹. And for those who enjoy getting around on foot, you will appreciate Tracker, a sports application that acts as your own personal trainer by keeping track of how well you did on your last run.

1. Some features rely on Internet services which may require a fee. As with all wireless products, actual performance will vary depending on environment.
2. Full functionality for one month included in the offering. After the trial period, this service will require a fee. Please check with your service provider for more information.

HPM-90 Stereo Portable Handsfree

- OLED Display with caller ID and track information
- Handle calls or adjust music on the move
- Quality sound with great balance between bass & treble
- 3.5mm plug: listen to music from your choice of headset
- Call handling keys to answer, end, mute or reject calls
- Clip for attaching Remote Control to clothing



Take calls and listen to your music without touching your phone using the stereo portable handsfree HPM-90. This sleek and elegant headset consists of in-ear stereo headphones and a OLED Display that gives you all the information you need to know about who's calling, what song is playing and which radio station you are listening to—without taking your phone out of your bag. With a total of five keys for call handling and Walkman® player functions, the HPM-90 is easy to use and convenient to wear but light enough to feel comfortable all day. Enjoy superior sound quality at home or on the go.

Cases and Stylus Packs

IPK-100

Cyber-shot™ Camera Phone Kit

- Help protect your phone with Cyber-shot™ branded case
- Easy access - won't miss a shot!
- Include yourself in the picture or video using the tripod
- Use your phone easily in the case with optional headset
- Carry your phone on your belt with the belt clip



When you take a picture with your camera phone, you capture a moment in time. An irreplaceable moment should be guarded with the IPK-100 protective case. Or with the IPK-100 protective case. And with incredibly easy access, you won't miss a shot. Steady your camera phone with the tripod and include yourself in the picture or video. After all, it's your moment and your memory to enjoy. The Camera Phone Kit IPK-100 comes with a protective case, tripod and detachable belt clip to optimize, enhance and support the use of your camera phone.

ISP-40

Sony Ericsson Stylus Pack

- Built for your Sony Ericsson P1i mobile phone
- Efficient and accurate phone control
- Stores neatly in handset
- Spare styli included (total of 3 in a pack)



Release the full capability of your Sony Ericsson P1i in the most efficient way with a Stylus from the Stylus Pack ISP-40. Conveniently stored in the housing of your handset, the pack contains spare styli should you need one.

Chargers & Desk Stands

MRC-60

Remote Control Cradle

- Holds & charges your phone with the use of your AC charger
- Plays your music from phone through your audio system
- Use the slim remote to control music & handle calls



Free your phone's tunes: dock your compatible Sony Ericsson mobile phone in the MRC-60 Remote Control Cradle and hear your music on a grand scale. Play music in hi-fi through your sound system while charging your phone's battery with the use of your AC adapter. The cradle's simple-to-use remote lets you control your music tracks and volume, and conveniently handle calls.



Sony Ericsson



I  choices

compatibility



compatibility



Sony Ericsson



Accessory Compatibility Chart

	K550i	K790	P1i	W200a	W580i	W810	W880i	W950	Z310a
Batteries									
Standard Battery BST-30									
Standard Battery BST-33	•	•					•	•	
Standard Battery BST-36				•					•
Standard Battery BST-37						•			
Standard Battery BST-38					•				
Standard Battery BST-40			•						
Car Accessories									
Bluetooth® Car Speakerphone HCB-120	•	•	•		•	•	•	•	•
Car Holder HCH-60		•	•	•		•		•	•
Cases & Stylus Packs									
Active Case IAC-25	•	•		•	•	•	•		•
Classic Case ICE-25	•	•		•	•	•	•		
Classic Case ICE-26									•
Executive Case IEC-20			•					•	
Camera Phone Kit IPK-100***	•	•		•	•	•	•	•	•
Stylus Pack ISP-20									
Stylus Pack ISP-25									
Stylus Pack ISP-30								•	
Stylus Pack ISP-40			•						
Chargers & Desk Stands									
Desk Stand CDS-65	▶	•	•	•	▶	•	▶	•	•
Cigarette Lighter Adapter CLA-60	•	•	•	•	•	•	•	•	•
Micro Travel Charger CMT-60		•	•	•	•	•	•	•	•
Standard Charger CST-13									
Two Port Standard Charger CST-75	•	•	•	•	•	•	•	•	•
Music Remote Control MRC-60	▶	•	•		▶		▶	•	

▶ Denotes system connector on side of handset. Handset will work with the device, but will be positioned on its side. * Compatible when used with Windows XP. ** SMS notification is not supported on MBW-150 when used with W810. Please note that in order to have full compatibility between the MBW-150 and your Symbian OS phone you need to have software release MR-C or later. If you do not have this release some functionality may not work. Track title will only work on Symbian phones with software release MR-E or later and on OCE phones (Operating System Ericsson) with software release MR-5 or later. Track title display is not supported with the following phone models: K610, K618, K790, K800, K818, M600, P990, V630, W710, W830, W850, W950, W958, Z610, Z710. You can find which SW release you have on your phone or upgrade it to the new version by using Sony Ericsson Update Service. *** IPK-100 is a Cyber-shot™ branded accessory, but it will also work with other compatible phones listed above. **** Step to next/previous preset channel via remote control is not supported on the HPM-82 & HPM-90 when used in FM radio mode with W810, W800, W700, W200, K750. HPM-90 does not support RDS information when listening to the FM radio.

This chart is published by Sony Ericsson Mobile Communications AB, without any warranty. Improvements and changes to this documentation necessitated by typographical errors, inaccuracies of current information, or improvements to the products, may be made by Sony Ericsson Mobile Communications AB at any time and without notice. The products and services displayed in this documentation may not be available in your particular country or locality, or at all. All rights reserved. Reproduction in whole or in part without written permission is prohibited. Screen images simulated.

© 2007 Sony Ericsson Mobile Communications AB.



Sony Ericsson



Accessory Compatibility Chart

	K550i	K790	P1i	W200a	W580i	W810	W880i	W950	Z310a
Cables									
USB Cable DCU-60	•	•	•	•	•	•	•	•	•
Music Cable MMC-60	•	•	•	•	•	•	•	•	
Music Cable MMC-70	•	•	•	•	•	•	•	•	
Bluetooth® Handsfree Headsets									
Bluetooth® Headset HBH-IV835	•	•	•		•	•	•	•	•
Bluetooth® Headset HBH-IV840	•	•	•		•	•	•	•	•
Bluetooth® Headset HBH-GV435	•	•	•		•	•	•	•	•
Bluetooth® Headset HBH-GV435a	•	•	•		•	•	•	•	•
Bluetooth® Headset HBH-PV702	•	•	•		•	•	•	•	•
Bluetooth® Headset HBH-PV705	•	•	•		•	•	•	•	•
Bluetooth® Headset HBH-PV705SE (Style Edition)	•	•	•		•	•	•	•	•
Bluetooth® Headset HBH-PV710	•	•	•		•	•	•	•	•
Bluetooth® VoIP Kit HBV-100*	•	•	•		•	•	•	•	•
Bluetooth® Music Receiver MBR-100	•	•	•		•		•	•	
Stereo Bluetooth® Headset HBH-DS200	•	•	•		•		•	•	
Stereo Bluetooth® Headset HBH-DS970	•	•	•		•		•	•	
Stereo Bluetooth® Headset HBH-DS980	•	•	•		•		•	•	
Bluetooth® Watch MBW-150EXEC**	•	•	•		•	•	•	•	
Bluetooth® Watch MBW-150MUSIC**	•	•	•		•	•	•	•	
Handsfree Headsets									
Stereo Portable Handsfree HPM-20									
Stereo Portable Handsfree HPM-75	•	•	•	•	•	•	•	•	•
Stereo Portable Handsfree HPM-82****	•	•	•	•	•	•	•	•	
Stereo Portable Handsfree HPM-90****					•		•	•	
Speakers & Audio									
Music Desk Stand MDS-60	▶	•	•	•	▶	•	▶	•	
Music Desk Stand MDS-65	•	•	•	•	•	•	•	•	
Home Audio System MDS-70	▶	•	•	•	▶	•	▶	•	
Portable Speakers MPS-70	•	•	•	•	•	•	•	•	
Snap-on Speakers MPS-75	•	•	•	•	•	•	•	•	
Enablers									
GPS Enabler HGE-100	•	•			•		•		

▶ Denotes system connector on side of handset. Handset will work with the device, but will be positioned on its side.

I  being connected

sony family



sony family



Stream stereo music from an A2DP capable phone



Headsets

DR-BT30Q Wireless Stereo Headset

- Ultra portable Clip-on style with retractable cords
- Remote Control with on the earpiece
- Subtle built-in mic for phone call usage



DR-BT21G Stereo Bluetooth® Headset¹

- AVRCP profile to allow Remote Control function (play/Stop, FW, RW)
- Wireless neck-band style
- Remote Control on the earpiece
- Subtle built-in microphone



DR-BT50 Stereo Bluetooth® Headset¹

- Pristine audio experience based on MDR-D777LP Altus™ headphone Form Factor
- 40mm headphone driver units with premium Neodymium magnets (360kJ/m) for superior audio accuracy
- Auranomic design inside earcup equal drive positioned parallel to natural angle of ear for superior audio transmission
- Circumaural closed/over-the-ear type for maximum audio enjoyment
- Remote Control on the earpiece



¹ Ability to use this Bluetooth enabled product with other devices may vary as not all Bluetooth devices are compatible.

Shelf Systems

CMT-BX5BT Micro Component System

- Bluetooth® Capability (A2DP)¹: stream music wirelessly from your compatible Bluetooth® enabled PC, Sony Ericsson phone, or from a MP3 player with an optional Bluetooth® adapter (sold separately).
- Elegant Black Finish: matches even the most sophisticated office or home decor.
- 15 Watts per channel (x2) RMS⁴ offers plenty power for small to large size rooms or offices.



CMT-HX7BT Micro Component System

- SAT Ready²: listen to Satellite radio with the optional home antenna. Supports either XM® or Sirius® Satellite Radio.
- Bluetooth® Capability (A2DP)¹: stream music wirelessly from your compatible Bluetooth® enabled PC, Sony Ericsson phone, or from a MP3 player with Bluetooth® adapter (sold separately).
- 100 Watts Total Power: 50 Watts per channel (x2) RMS⁴. Plenty of power for small to large size rooms or offices.



CMT-DH7BT DVD/SAT/BT Micro System

- DVD Playback³
- SAT Ready²: listen to Satellite radio with the optional home antenna. Supports either XM or Sirius Satellite Radio.
- Bluetooth® Capability (A2DP)¹: stream music wirelessly from your compatible Bluetooth® enabled PC, Sony Ericsson phone or MP3 player with an optional Bluetooth® adapter (sold separately).
- 50 Watts per channel (x2) RMS⁴. Plenty of power for small to large size rooms or offices.



1 Ability to use this Bluetooth enabled product with other devices may vary as not all Bluetooth devices are compatible.
2 Requires Satellite radio subscription and antenna sold separately. Antenna placement restrictions apply.
3 DVD media/formats are not universally compatible.
4. All Shelf Systems are 6 Ohms at 1 kHz and 10% THD.

Boombox

ZS-BT1

Boombox with Bluetooth® Technology

- Bluetooth® Capability (A2DP)¹: stream and listen wirelessly to music on your boombox from a compatible Bluetooth enable mobile phone or from a digital music player with a Bluetooth adaptor (sold separately).
- Audio-in for Digital Music Player or PC: allows for simple plug-and-play integration with a digital music player or PC.
- Stylish, Slim Body with Front Loading CD Design: provides easy access to your CD for playback functionality.



Receiver/ Transmitter

HWS-BTA2W

2-way Bluetooth® Adaptor

- Multi-use Bluetooth® adaptor¹ (either Bluetooth® transmitter or receiver)
- Stand/Cradle/AC adaptor supplied
- Bluetooth® version 2.0



Speaker

SRS-BTM30

Bluetooth® Wireless Speaker

- Bluetooth® speaker for use with bluetooth enable PCs and mobile phones¹
- Bluetooth® Wireless capability¹ (Bluetooth® ver.2.0)
- Box type for using anywhere
- 48mm Neodymium Magnet unit



Digital Media Port Accessory

TDM-BT1

For Connectivity to Bluetooth® Devices

- Connect on BRAVIA® Theatre Systems and A/V Receivers with Digital Media Port input
- Compatible with Bluetooth® enabled devices¹



¹ Ability to use this Bluetooth enabled product with other devices may vary as not all Bluetooth devices are compatible.

Mobile Car Head Units

MEX-BT2500

Bluetooth® CD Receiver

- Bluetooth® A2DP hands-free and A2DP Audio Streaming Capability¹
- Integrated hands-free microphone
- Detachable faceplate with one line, 13-segment FL Display



MEX-BT5000

Bluetooth® CD/ MP3/Changer Controller

- Bluetooth® A2DP hands-free with Phonebook and A2DP Audio Streaming Capability
- Integrated Hands-Free Microphone with echo and noise cancellation circuitry
- Flip-Down, Detachable Faceplate with Full Motion FL Display



¹ Ability to use this Bluetooth enabled product with other devices may vary as not all Bluetooth devices are compatible.

Memory Stick PRO Duo™ Media

MSX-M2GS 2GB¹

MSX-M1GST 1GB¹

MSX-M512S 512MB¹

MSX-M256S 256MB¹

- Includes MSAC-M2 Memory Stick Duo media adaptor for compatibility in standard Memory Stick media slot
- Minimum write speed: 15 Mbps¹
- Increased durability (temperature range of operation -13°F~ 185°F)



1 Available storage capacity of Memory Stick PRO Duo™ media may vary. A portion of the memory is used for data management functions. Actual available memory is: 256MB=220MB, 512MB=460MB, 1GB=940MB, 2GB=1.85GB.

2 15Mbps minimum write speed supported in optimized 4 pin parallel host devices. Capacity, transfer speeds, and other Memory Stick PRO media features vary by and are dependent upon the design of host hardware devices. See host device specifications for details.

Memory Stick Micro™ Media

MS-A1GD 1GB¹

MS-A512D 512MB¹

MS-A256D 256MB¹

- Ultra-small size to fit mobile phones
- Dual Operating Voltage: 1.8V/ 3.3V
- Includes Memory Stick Micro Adapter



1 Available storage capacity of Memory Stick Micro™ media may vary. A portion of the memory is used for data management functions. Actual available memory is: 256MB=220MB, 512MB=450MB, 1GB=900MB.

Digital Photo Printer

DPP-FP90

Digital Photo Printer

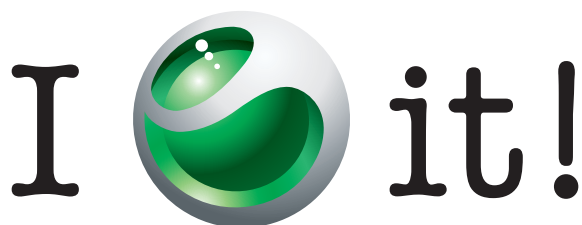
- Lab-quality prints at home in under 50 seconds¹
- Create 4" x 6" prints, ID Photo prints or Index prints
- Dye sublimation printing with over 16 million colors
- Extra Large 3.6"² Clear Photo LCD Plus™ screen
- One-button Auto Touch-Up
- Convenient Pictbridge™ printing
- Accepts multiple media formats³

1 When printing from flash memory cards or PC

2 Viewable area, measured diagonally.

3 Direct media input slots accept Memory Stick Duo™ media and Memory Stick PRO Duo™ media, SD and Mini SD media, and Compact Flash media; other media may require optional adaptors.





©2008 Screen images displayed are simulated or enhanced. © 2008 Sony Electronics Inc. All rights reserved. Reproduction in whole or in part without written permission is prohibited. Sony, Sony Style, Walkman, Cyber-shot, like, no.other, and their logos, Memory Stick Duo, and Memory Stick Micro, M2, Memory Stick PRO Duo, Memory Stick, Clear Photo LCD Plus and Altus are trademarks of Sony. The Liquid Identity logo, BestPic, PlayNow, VideoDJ, PhotoDJ, MusicDJ and TrackID are trademarks or registered trademarks of Sony Ericsson Mobile Communications AB. Ericsson is a trademark or registered trademark of Telefonaktiebolaget LM Ericsson. TrackID is powered by Gracenote Mobile MusicID. Gracenote and Gracenote Mobile MusicID are trademarks of Gracenote Inc. Picture blogging is powered by Blogger™. Blogger is a trademark or registered trademark of Google Inc. Google is a registered trademark of Google Inc. Java and all Java-based trademarks and logos are trademarks of Sun Microsystems, Inc. in the United States and other countries. The Bluetooth word mark and logo are trademarks of Bluetooth SIG, Inc. and any use of such marks by Sony Ericsson is under license. Opera is a trademark or registered trademark of Opera Software ASA. NetFront™ is a trademark or registered trademark of ACCESS Co. Ltd. Microsoft is a trademark or registered trademark of Microsoft Corporation. Wayfinder and Wayfinder Navigator are trademarks or registered trademarks of Wayfinder Systems AB. Adobe and Photoshop album are trademarks or registered trademarks of Adobe Systems Incorporated. PictBridge is a trademark or registered trademark of Canon Kabushiki Kaisha Corporation. All other marks are the property of their respective owners. © 2008 Sony Ericsson Mobile Communications (USA) Inc. All rights reserved. Nest Features and specifications are subject to change without notice. Non-metric weights and measures are approximate and may vary. Music tracks and albums displayed are for demonstration purposes only and are not included. Sony is not responsible for typographic and printing errors.