



SAMSUNG HOSPITALITY DISPLAYS

HF690U SERIES (North America)

Elevate the Guest Experience with Samsung's Versatile HF690U Hospitality Displays

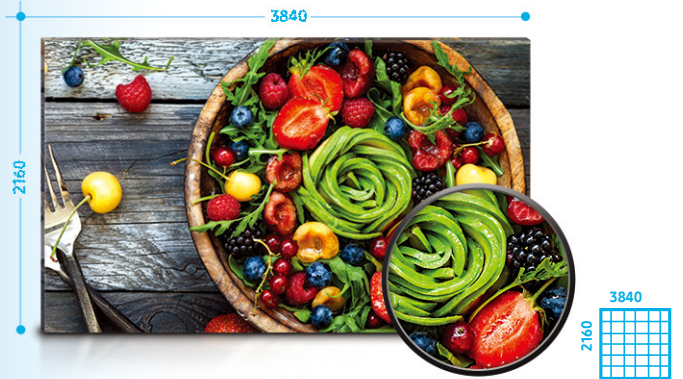
Today's premium and luxury hotel guests expect an in-room environment that provides, or even surpasses, the comforts of home. Through crystal-clear, UHD-quality content presentation and convenient operations, Samsung's HF690U displays foster a more memorable stay experience. The HF690U displays place a detailed library of content and in-room functionality within reach, all accessible through an intuitive, customizable home menu. Hotel operators also can enjoy more efficient guest interaction and operations through a thorough design. Each HF690U display is backed by the powerful Tizen OS, which enables secure and rapid development of business-ready web applications.

HIGHLIGHTS

- Deliver high quality content with UHD resolution
- Develop and deploy compatible web applications within the powerful Tizen OS
- Showcase powerful content securely through the integrated H.Browser
- Tailor individual home menus to suit guests' personalized needs
- Develop and share personalized content through the centralized LYNK REACH 4.0 server
- Synchronize multiple displays for more efficient management using the LYNK HMS Server

2M PIXELS **FULL HD**

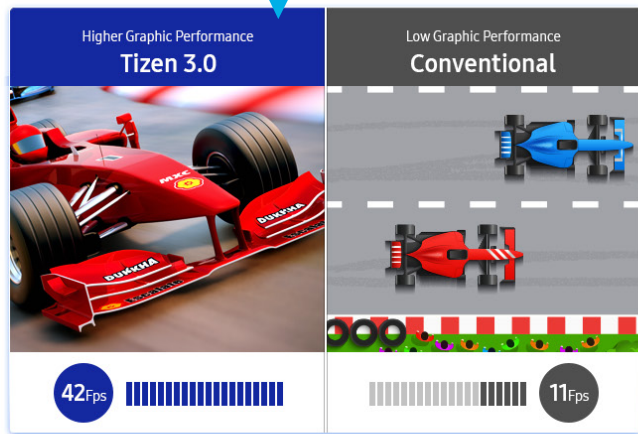
8M PIXELS **UHD 4K**



UHD-QUALITY CONTENT DELIVERY

Today's premium and luxury hotel guests expect the same excellent clarity and picture quality from their in-room displays as they receive at home. Samsung's HF690U Series delivers this enhanced viewing experience through exceptionally vivid and detailed imagery. Featuring UHD resolution (3,840 x 2,160) that delivers four times the pixels of FHD formats, the HF690U Series showcases each image's most intricate details for a brilliant, realistic presentation.

Samsung Hospitality Displays secured by Knox



POWERFUL GRAPHIC PERFORMANCE WITH ENHANCED SECURITY

Backed by the powerful TIZEN operating system, Samsung's hospitality displays ensure secure, seamless delivery of vital hospitality content. The TIZEN OS arms each display with a rigid, three-layer protective structure that provides added defense across the application, platform and system layers. This reinforced security also enables TIZEN's integrated H.Browser technology to successfully render 2D and 3D content and achieve faster upload and response times.



Web App SDK

- HTML5 and Standards Based
- TV Extended Web API
- Light Weight Web Simulator
- Extensive Tool suite




SDK





Utility Tools & Support

- Live Debugging
- Real TV Connection
- Debugging & Profiling
- Tizen Community




Logo Image






SmoothText Overlay



Background Images / Video



Customizable & Unlimited Feature Icons

SIMPLE, COMPATIBLE WEB APP DEVELOPMENT

Beyond its advanced graphics capabilities, Samsung's H.Browser technology empowers fast and accurate application development from any location. All applications are compatible with, and can be developed and stored within, the TIZEN OS, and are backed by an advanced Software Development Kit (SDK). The platform's Web Simulator and Remote Web Inspector (RWI) tools further refine applications through real-time performance and security testing.

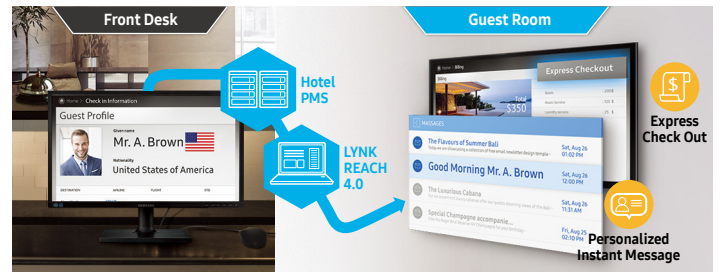
A TAILORED HOME MENU FOR GUESTS

The embedded TIZEN platform also enables hotel managers to customize their displays' home menus to match their unique brand and offerings. This includes unlimited icons in the bottom scroll bar and the addition of customized imagery and logo placement in the background. As a result, managers and guests alike can navigate the interface freely and at improved efficiency.



CENTRALIZED, REAL-TIME MANAGEMENT

As a unified content management solution, LYNK REACH 4.0 accommodates LAN, Wi-Fi, and coaxial infrastructures to amplify hotel management, monitoring and guest service functions. The LYNK REACH 4.0 platform's centralized, real-time monitoring streamlines maintenance demands. Hotel managers can select single display or display groups and troubleshoot guest issues before they escalate.



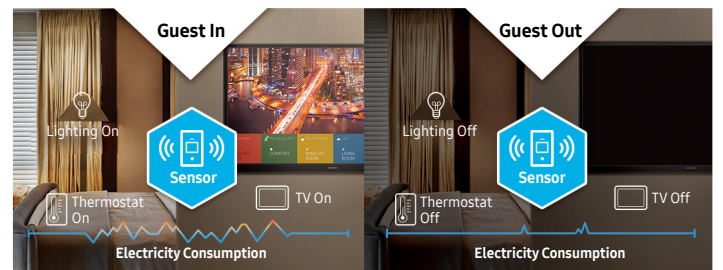
END-TO-END PERSONALIZED SERVICE

Hotels additionally can use the LYNK REACH 4.0 platform to deliver customized messages to guests relevant to their specific stay details or interests. As guests arrive, hotel operators can greet them with a personalized welcome message while also promoting on-site amenities and promotions. Once the stay concludes, LYNK REACH 4.0 offers express check-out to save guests the time and hassle of a trip to the lobby.



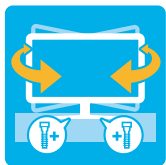
CONVENIENT AND THOROUGH ROOM MANAGEMENT

Hospitality display users additionally can leverage the displays' integrated LYNK HMS technology to manage room settings and guest-staff communication more conveniently and efficiently. LYNK HMS' Room Management Solution (RMS) streamlines hotel maintenance while offering more detailed visibility into in-room device performance and energy use. The complementary In-Room Control (IRC) Service allows guests to manage lighting, drapes and on-screen content from a single, user-friendly interface.



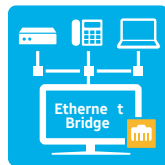
DELIGHT GUESTS AT A REDUCED COST

Samsung's LYNK HMS technology empowers hotel operators to deliver a pleasant and memorable guest experience in a more efficient, cost-friendly manner. The platform's Energy Management Solution (EMS) adjusts in-room heat and air settings based on guest occupancy and avoids wasting energy on empty rooms. LYNK HMS's Content Management Solution (CMS) streamlines content creation and delivery throughout the hotel, driving more impactful and hassle-free delivery of important messages.



SWIVEL STAND

Customize preferred viewing angle and protect displays with lock-down plates



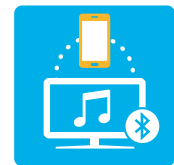
ETHERNET BRIDGE

Expansive connectivity transforms the displays into a work or play station



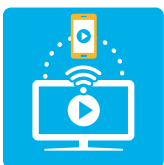
PLUG AND PLAY

Easily set up and synchronize multiple displays and servers



BLUETOOTH MUSIC PLAYER

Prevent unauthorized external sources such as HDMI, USB and TTX



CONTENT SHARING (MOBILE TO TV MIRRORING, SMARTVIEW)

Synchronize with up to four mobile devices for seamless content streaming



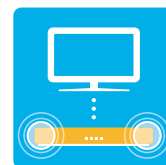
SECURITY MODE

Prevent unauthorized and potentially-harmful changes



LYNKDRM

Safe, cost-efficient alternative to hardware-based content protection systems



SOUND BAR COMPATIBILITY

Connect the displays with powerful audio



SI COMPATIBILITY

Save time and effort when connecting with system integrators' set-top boxes

SPECIFICATIONS

| MODEL | | 43NF69U HG43NF690UF | 50NF69U HG50NF690UF | 55NF69U HG55NF690UF | 65NF69U HG65NF690UF | 75NF69U HG75NF690UF |
|---------------------|---------------------------------|---|---|---|---|---|
| Display | Backlight | LED | LED | LED | LED | LED |
| | Inch (Real Inch) | 43 | 50 | 55 | 65 | 75 |
| | Resolution | 3,840 × 2,160 | 3,840 × 2,160 | 3,840 × 2,160 | 3,840 × 2,160 | 3,840 × 2,160 |
| Video | Picture Engine | UHD Up-Scaling | UHD Up-Scaling | UHD Up-Scaling | UHD Up-Scaling | UHD Up-Scaling |
| | Dynamic Contrast Ratio | Mega Contrast | Mega Contrast | Mega Contrast | Mega Contrast | Mega Contrast |
| | Micro Dimming | UHD Dimming | UHD Dimming | UHD Dimming | UHD Dimming | UHD Dimming |
| | Active Crystal Color | N/A | N/A | N/A | N/A | N/A |
| | Wide Color Enhancer (Plus) | N/A | N/A | N/A | N/A | N/A |
| | Auto Motion Plus | Yes | Yes | Yes | Yes | Yes |
| | Film Mode | Yes | Yes | Yes | Yes | Yes |
| Audio | Dolby Digital Plus | Yes | Yes | Yes | Yes | Yes |
| | DTS Codec | N/A | N/A | N/A | N/A | N/A |
| | Sound Output (RMS) | 20W(L:10W, R:10W) | 20W(L:10W, R:10W) | 20W(L:10W, R:10W) | 20W(L:10W, R:10W) | 20W(L:10W, R:10W) |
| | Speaker Type | 2CH(Down Firing w/ Bass Reflex) | 2CH(Down Firing w/ Bass Reflex) | 2CH(Down Firing w/ Bass Reflex) | 2CH(Down Firing w/ Bass Reflex) | 2CH(Down Firing w/ Bass Reflex) |
| | Bluetooth Audio | Yes | Yes | Yes | Yes | Yes |
| Smart Service | Smart TV Type | Smart | Smart | Smart | Smart | Smart |
| | Web Browser | Yes | Yes | Yes | Yes | Yes |
| | Smart View | Yes | Yes | Yes | Yes | Yes |
| Smart Feature | TV to Mobile - Mirroring | N/A | N/A | N/A | N/A | N/A |
| | Mobile to TV - Mirroring, DLNA | Yes | Yes | Yes | Yes | Yes |
| Differentiation | Sports Mode | N/A | N/A | N/A | N/A | N/A |
| | All Care Protection | N/A | N/A | N/A | N/A | N/A |
| Feature | Processor | Quad-Core | Quad-Core | Quad-Core | Quad-Core | Quad-Core |
| | Accessibility | Voice Guide(US English)/ Enlarge/ High Contrast/ Learn TV Remote(US English)/ Multi-output Audio | Voice Guide(US English)/ Enlarge/ High Contrast/ Learn TV Remote(US English)/ Multi-output Audio | Voice Guide(US English)/ Enlarge/ High Contrast/ Learn TV Remote(US English)/ Multi-output Audio | Voice Guide(US English)/ Enlarge/ High Contrast/ Learn TV Remote(US English)/ Multi-output Audio | Voice Guide(US English)/ Enlarge/ High Contrast/ Learn TV Remote(US English)/ Multi-output Audio |
| | Digital Clean View | Yes | Yes | Yes | Yes | Yes |
| | Auto Channel Search | Yes | Yes | Yes | Yes | Yes |
| | Auto Power Off | Yes | Yes | Yes | Yes | Yes |
| | Caption (Subtitle) | Yes | Yes | Yes | Yes | Yes |
| | ConnectShare™ (HDD) | Yes | Yes | Yes | Yes | Yes |
| | ConnectShare™ (USB 2.0) | Yes | Yes | Yes | Yes | Yes |
| | EPG | Yes | Yes | Yes | Yes | Yes |
| | Game Mode | Yes | Yes | Yes | Yes | Yes |
| | OSD Language | English, Spanish, French | English, Spanish, French | English, Spanish, French | English, Spanish, French | English, Spanish, French |
| | Picture-In-Picture | N/A | N/A | N/A | N/A | N/A |
| | BT HID Support | Yes | Yes | Yes | Yes | Yes |
| | USB HID Support | Yes | Yes | Yes | Yes | Yes |
| Teletext (TTX) | N/A | N/A | N/A | N/A | N/A | |
| System | Digital Broadcasting | ATSC/ClearQAM | ATSC/ClearQAM | ATSC/ClearQAM | ATSC/ClearQAM | ATSC/ClearQAM |
| | Analog Tuner | Yes | Yes | Yes | Yes | Yes |
| | CI (Common Interface) | N/A | N/A | N/A | N/A | N/A |
| | Data Broadcasting | N/A | N/A | N/A | N/A | N/A |
| Hospitality Feature | Samsung LYNK™ HMS Compatibility | Yes | Yes | Yes | Yes | Yes |
| | H.Browser | Yes | Yes | Yes | Yes | Yes |
| | Samsung LYNK™ REACH (IP) | REACH 4.0 | REACH 4.0 | REACH 4.0 | REACH 4.0 | REACH 4.0 |

| MODEL | | 43NF69U HG43NF690UF | 50NF69U HG50NF690UF | 55NF69U HG55NF690UF | 65NF69U HG65NF690UF | 75NF69U HG75NF690UF |
|------------------------|---|----------------------------------|----------------------------------|----------------------------------|----------------------------------|----------------------------------|
| Hospitality Feature | Samsung LYNK™ REACH (RF) | REACH 4.0 | REACH 4.0 | REACH 4.0 | REACH 4.0 | REACH 4.0 |
| | Hospitality Home Menu | Home Menu 2017 | Home Menu 2017 | Home Menu 2017 | Home Menu 2017 | Home Menu 2017 |
| | Bluetooth Music Player (Mobile → TV) | Yes | Yes | Yes | Yes | Yes |
| | Hospitality Plug&Play (Easy Set-up) | Yes | Yes | Yes | Yes | Yes |
| | Auto Source Mode | Yes | Yes | Yes | Yes | Yes |
| | Power On Mode | Yes | Yes | Yes | Yes | Yes |
| | Hotel Channel List | Yes | Yes | Yes | Yes | Yes |
| | Channel Menu Display | Yes | Yes | Yes | Yes | Yes |
| | Mixed Channel List (ATSC, DVB-T/T2/C/S2, Analog) | Yes | Yes | Yes | Yes | Yes |
| | My Channel | N/A | N/A | N/A | N/A | N/A |
| | Energy Saving Mode(BLU control) | Yes | Yes | Yes | Yes | Yes |
| | Logo Display with Time Out Setting (BMP/Movie) | Yes | Yes | Yes | Yes | Yes |
| | Welcome Message | Yes | Yes | Yes | Yes | Yes |
| | RJ12 / IR Pass Through | Yes | Yes | Yes | Yes | Yes |
| | External Clock Compatibility | N/A | N/A | N/A | N/A | N/A |
| | Clock Back Up Supply | Yes | Yes | Yes | Yes | Yes |
| | External Clock Dimming Control | N/A | N/A | N/A | N/A | N/A |
| | Software Clock | N/A | N/A | N/A | N/A | N/A |
| | Multi Code Remote control | Yes | Yes | Yes | Yes | Yes |
| | Sound Bar Compatibility | Yes | Yes | Yes | Yes | Yes |
| | Music Mode (Input: PC/AV/Component/HDMI) | Yes | Yes | Yes | Yes | Yes |
| | Music Mode Backlight on/off | Yes | Yes | Yes | Yes | Yes |
| | TTX Clock Update (Analogue) | N/A | N/A | N/A | N/A | N/A |
| | USB Cloning | Yes | Yes | Yes | Yes | Yes |
| | Smooovie Compatibility | Yes | Yes | Yes | Yes | Yes |
| | Soft AP | Yes | Yes | Yes | Yes | Yes |
| | On/Off Timer (Schedule) | Yes | Yes | Yes | Yes | Yes |
| | Alarm | Yes | Yes | Yes | Yes | Yes |
| | Samsung LYNK™ DRM RF | Yes | Yes | Yes | Yes | Yes |
| | Samsung LYNK™ DRM IP | N/A | Yes | Yes | Yes | Yes |
| | Pro:Idiom RF | Yes | Yes | Yes | Yes | Yes |
| | Pro:Idiom IP | N/A | Yes | Yes | Yes | Yes |
| bLAN | N/A | N/A | N/A | N/A | N/A | |
| Security Mode | Yes | Yes | Yes | Yes | Yes | |
| S/W EPG (Solution EPG) | Yes | Yes | Yes | Yes | Yes | |
| Input & Output | HDMI (Side/Rear) | 2/1 | 2/1 | 2/1 | 2/1 | 2/1 |
| | USB (Side/Rear) | 2/0 | 2/0 | 2/0 | 2/0 | 2/0 |
| | Component In (Y/Pb/Pr) (Side/Rear) | 0/1 | 0/1 | 0/1 | 0/1 | 0/1 |
| | Composite In (AV) (Side/Rear) | 0/1 (Common Use for Component Y) | 0/1 (Common Use for Component Y) | 0/1 (Common Use for Component Y) | 0/1 (Common Use for Component Y) | 0/1 (Common Use for Component Y) |
| | Ethernet (LAN) (Side/Rear) | 1 | 1/0 | 1/0 | 1/0 | 1/0 |
| | Headphone (Side/Rear) | N/A | N/A | N/A | N/A | N/A |
| | Audio Out (Mini Jack / LR) (Side/Rear) | 1/0 | 1/0 | 1/0 | 1/0 | 1/0 |
| | Digital Audio Out (Optical) (Side/Rear) | 1/0 | 1/0 | 1/0 | 1/0 | 1/0 |
| | RF In (Terrestrial/Cable input/Satellite Input) (Side/Rear) | 1/0 | 1/0 | 1/0 | 1/0 | 1/0 |
| | Ex-Link (RS-232C) (Side/Rear) | 1/0 | 1/0 | 1/0 | 1/0 | 1/0 |
| CI Slot (Side/Rear) | N/A | N/A | N/A | N/A | N/A | |

SPECIFICATIONS

| MODEL | | 43NF69U HG43NF690UF | 50NF69U HG50NF690UF | 55NF69U HG55NF690UF | 65NF69U HG65NF690UF | 75NF69U HG75NF690UF |
|------------------------------------|---|------------------------|------------------------|------------------------|------------------------|------------------------|
| Input & Output | Scart (Side/Rear) | N/A | N/A | N/A | N/A | N/A |
| | HDMI A / Return Ch. Support | Yes | Yes | Yes | Yes | Yes |
| | Wireless LAN Built-in | Yes | Yes | Yes | Yes | Yes |
| | Anynet+ (HDMI-CEC) | Yes | Yes | Yes | Yes | Yes |
| | Pillow Speaker Jack (Side/Rear) | N/A | N/A | N/A | N/A | N/A |
| | Variable Audio Out (Side/Rear) | 0/1 | 0/1 | 0/1 | 0/1 | 0/1 |
| | Variable Audio Out Volume Control (Side/Rear) | 0/1 | 0/1 | 0/1 | 0/1 | 0/1 |
| | Video Out (Side/Rear) | N/A | N/A | N/A | N/A | N/A |
| | RJ12 (Side/Rear) | 0/1 | 0/1 | 0/1 | 0/1 | 0/1 |
| | RJP (Remote Jackpack) (Side/Rear) | 1/0 | 1/0 | 1/0 | 1/0 | 1/0 |
| | Headphone ID (Side/Rear) | N/A | N/A | N/A | N/A | N/A |
| | Door-Eye Control (Side/Rear) | N/A | N/A | N/A | N/A | N/A |
| | Door-Eye Video In (Side/Rear) | N/A | N/A | N/A | N/A | N/A |
| | PC In (D-sub)(Side./Rear) | N/A | N/A | N/A | N/A | N/A |
| | PC/DVI Audio In (Mini Jack)(Side./Rear) | N/A | N/A | N/A | N/A | N/A |
| Ethernet-Out (LAN-Out) (Side/Rear) | 1/0 | 1/0 | 1/0 | 1/0 | 1/0 | |
| Design | Front Color | Black | Black | Black | Black | Black |
| | Stand Type | Square | Square | Square | Square | Y-Shape |
| | Swivel (Left/Right) | Yes(90/90) | Yes(90/90) | Yes(90/90) | Yes(90/90) | N/A |
| Dimension (WxHxD) | Set Size without Stand (WxHxD)(mm) | 975.8x569.0x62.6 | 1128.9x654.4x63.2 | 1242.6x718.4x63.2 | 1463.5x844.5x64.6 | 1688.9x971.2x66.0 |
| | Set Size with Stand (WxHxD)(mm) | 975.8x626.4x226.5 | 1128.9x711.6x226.5 | 1242.6x775.3x226.5 | 1463.5x923.4x355.1 | 1688.9x1052.6x384.9 |
| | Package Size (WxHxD)(mm) | 1180.0x674.0x161.0 | 1361.0x760.0x164.0 | 1462.0x833.0x184.0 | 1760.0x977.0x210.0 | 1886.0x1138.0x258.0 |
| Weight | Set Weight without Stand (kg) | 8.7 | 12.7 | 14.7 | 23.8 | 35.2 |
| | Set Weight with Stand (kg) | 11.8 | 15.8 | 17.8 | 28.9 | 38.8 |
| | Package Weight (kg) | 15.9 | 20.8 | 24.4 | 38.5 | 53.2 |
| Accessory | Remote Controller Model | TM1240A | TM1240A | TM1240A | TM1240A | TM1240A |
| | Battery (for Remote Control) | Yes | Yes | Yes | Yes | Yes |
| | Samsung Smart Control (Included) | N/A | N/A | N/A | N/A | N/A |
| | Mini Wall Mount Support | Yes | Yes | Yes | Yes | N/A |
| | Vesa Wall Mount Support | Yes | Yes | Yes | Yes | Yes |
| | Power Cable | Yes | Yes | Yes | Yes | Yes |
| | Quick Install Guide | Yes | Yes | Yes | Yes | Yes |
| | Data Cable | Yes | Yes | Yes | Yes | Yes |
| | Stand Mount Kit | Yes | Yes | Yes | Yes | Yes |
| | Stand Security Screws | Yes | Yes | Yes | Yes | Yes |
| Angle Adaptor (for Side RF tuner) | N/A | N/A | N/A | N/A | N/A | |
| VESA Standard | VESA Size | 200x200 | 400x400 | 400x400 | 400x400 | 400x400 |
| | Wall Mount Screw Size | M8 | M8 | M8 | M8 | M8 |

PRODUCT IMAGE



NOTE.

ABOUT SAMSUNG ELECTRONICS CO., LTD.

Samsung Electronics Co., Ltd. inspires the world and shapes the future with transformative ideas and technologies. The company is redefining the worlds of TVs, smartphones, wearable devices, tablets, cameras, digital appliances, medical equipment, network systems, and semiconductor and LED solutions. For the latest news, please visit Samsung Newsroom at <http://news.samsung.com>

HOSPITALITY DISPLAYS

For more information about Samsung Hospitality Displays, visit www.samsung.com/business or www.samsung.com/displaysolutions

Screen images simulated.

Copyright © 2017 Samsung Electronics Co. Ltd. All rights reserved. Samsung is a registered trademark of Samsung Electronics Co. Ltd. Specifications and designs are subject to change without notice. Non-metric weights and measurements are approximate. All data were deemed correct at time of creation. Samsung is not liable for errors or omissions. All brand, product, service names and logos are trademarks and/or registered trademarks of their respective owners and are hereby recognized and acknowledged.

Samsung Electronics Co., Ltd.
416, Maetan 3-dong, Yeongtong-gu
Suwon-si, Gyeonggi-do 443-772, Korea

2017-08



Scan this code with your smartphone
to download the Samsung Display Solutions Mobile App.

SAMSUNG