



IGEL MANAGED WORKSPACE



IGEL TECHNOLOGY

Thin & Zero Client
Software & Hardware

OVER 20 YEARS THIN CLIENT EXPERTISE AND MORE THAN 2 MILLION DEVICES SOLD

IGEL Technology is one of the world's fastest growing manufacturers of thin and zero client solutions. According to IDC, it is the German market leader as well as number three within this segment in Europe. IGEL has local subsidiaries and offices in around 15 countries. Its products are distributed via a reliable global partner network made up of more than 1,500 trained system consultants, as well as around 3,000 other resellers in more than 50 countries. More than 20,000 companies, administrative bodies and public institutions throughout the world use IGEL products, including international and large companies such as Basler Versicherungen, Daimler, DAK, Deutsche Börse Systems and HSBC. However, small and medium-sized firms also benefit from the great opportunities for savings and security offered by IGEL hardware and software solutions.



2



DEVELOPED AND DESIGNED IN GERMANY

We develop our thin and zero clients at our site in Augsburg, Southern Germany. Our technical and partner support divisions are based at our main site in Bremen as well as in Australia, Belgium, China, France, the Netherlands, Austria, Sweden, Switzerland, the United Kingdom and the United States. Our own European, American and Asian sales and logistics centers assemble the thin and zero clients, load them with the latest firmware and test them before they are sent out. The integrated quality and environmental management system certified in accordance with ISO 9001 and 14001 applies not only during the development process but also during the manufacturing and sales processes too. In this way, we guarantee cutting-edge, top-quality technology and first-class service all from a single source.

COMPREHENSIVE TECHNICAL SUPPORT AND UP TO 5 YEARS WARRANTY

Customers who have registered their IGEL clients receive a free five year warranty (UD2, UD3, UD5, UD6) or a three year warranty (IZ2, IZ3, UD9, UD10) as well as free German and English-language support provided by qualified technical staff. Another 1,500 or so Authorized IGEL Partners (AIP) worldwide are also available to provide expert support.

Title page: UD5/UD6
This page: IZ3/UD3

MORE THAN JUST SOFTWARE AND HARDWARE!

IGEL offers far more than just software and hardware. Our products are complemented by numerous services which offer our customers and partners real added value. Our extensive training program also enables you to use our systems and tools even more efficiently.

PRESALES-SERVICES

- ▶ Presales technicians assist you during the test phase either on site or via a hotline.
- ▶ Partner account managers and key account managers who specialize in the needs of your sector are also available to offer advice on client hardware and software.

PROVISION SERVICES

- ▶ Local installation of thin clients in Europe, North America and Asia.
- ▶ Quality checks shortly before dispatch, immediate delivery.
- ▶ Inventory labels or personalized customer stickers can be attached prior to dispatch.
- ▶ Direct delivery to the specified address. Quick delivery to virtually any country worldwide.

AFTERSALES SERVICES

- ▶ Free expert e-mail support provided by specialized IGEL thin client support centers in Europe, the USA and China.
- ▶ Continuous development of firmware updates available for downloading, free of charge.
- ▶ Free firmware updates for the Universal Desktop thin client ranges for up to three years after they are discontinued.
- ▶ IGEL properly disposes of old hardware (WEEE in the EU).
- ▶ Local repair service / RMA e.g., in China, the Netherlands, Germany, the USA etc.

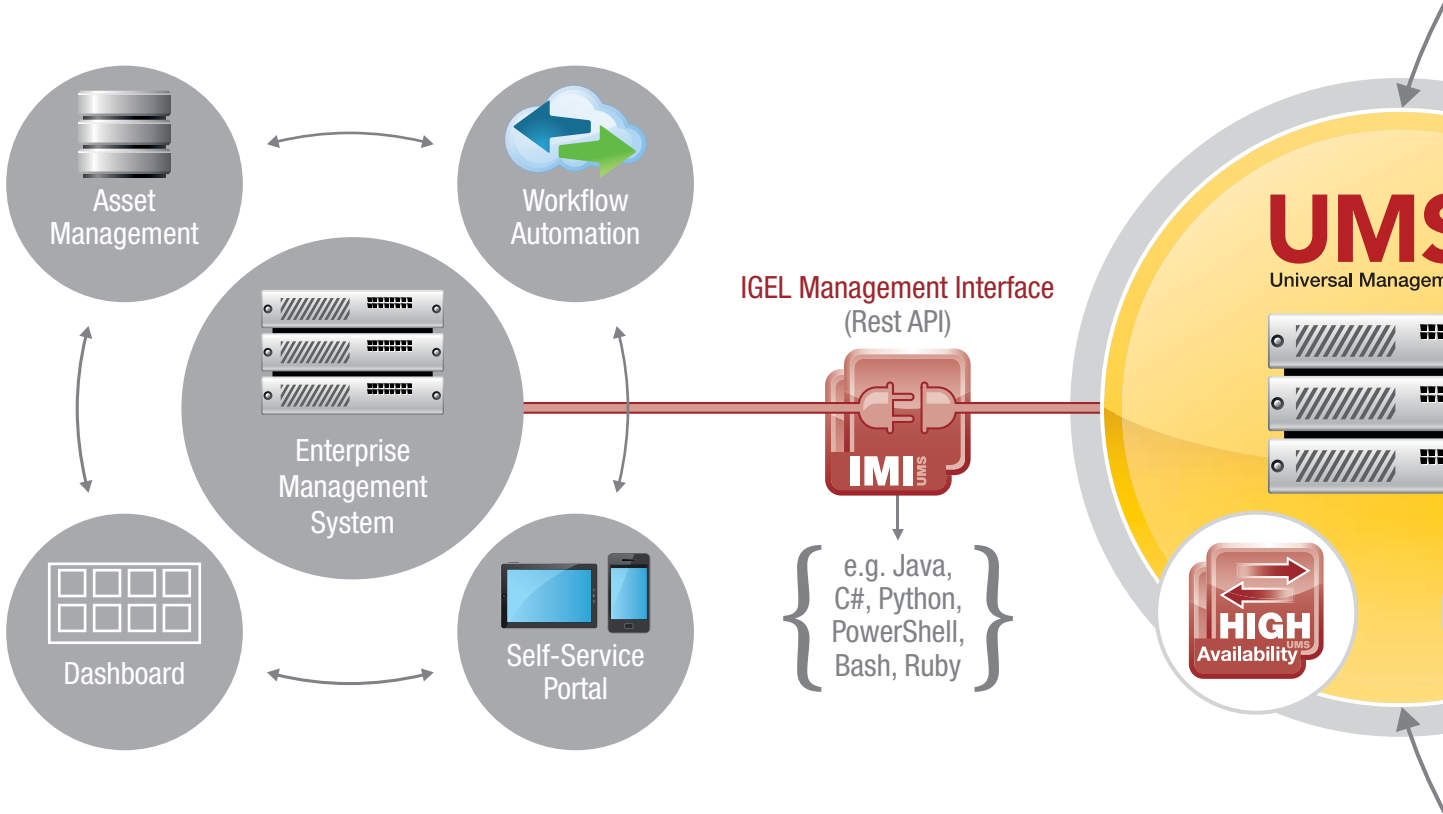
IGEL TRAINING

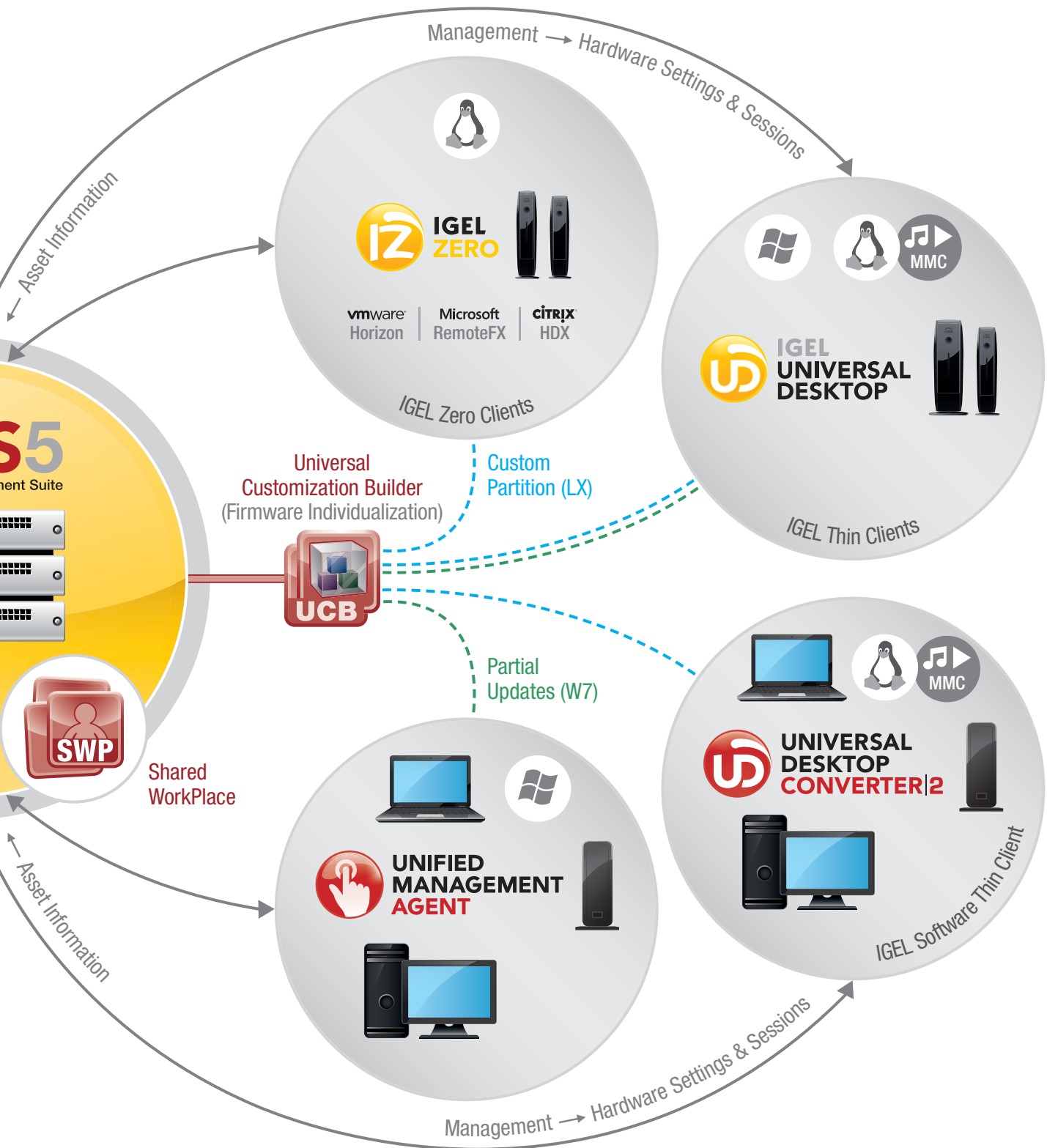
- ▶ The IGEL Official Curriculum (IOC) offers various courses for different levels of knowledge.
- ▶ First-hand expertise when it comes to designing, providing and administering IGEL client environments.
- ▶ Targeted training for partners, customers, software architects and consultants.
- ▶ Various training types to suit your individual needs: Trainer-run courses, individual courses or webinars.



OVERVIEW: IGEL MANAGED WORKSPACE FOR VDI-ENVIRONMENTS

What should today's modern IT workspace be capable of? And how can the various requirements when it comes to security, mobility, compliance, efficiency, availability, performance and ecology be met efficiently? The **IGEL Managed Workspace** is the answer: perfectly tailored components and the sector-leading IGEL Universal Management Suite (UMS) remote management solution as the control center for all settings. With a unique combination of software and hardware solutions, IGEL provides the basis for comprehensive Workspace Management that can cope with any IT infrastructure, even those in the future.





Universal Management Suite (UMS)

UMS5

Universal Management Suite

PROFILE

The IGEL Universal Management Suite (UMS) is a user-friendly and extremely efficient piece of software. It allows IGEL thin and zero clients as well as PCs, notebooks and thin clients from other manufacturers (converted into software thin clients using the Universal Desktop Converter (UDC) or with the Unified Management Agent (UMA) installed) to be remotely administered. It also helps to minimize support costs. With its open, network-friendly structure, it can be incorporated quickly and easily into the existing company infrastructure and offers maximum security and reliability.

TYPICAL USES

- ▶ **Automatically setting up** thin and zero clients with the right profile when they first attach to the network
- ▶ **Changing the settings** of the device or its local protocols and software tools
- ▶ **Re-imaging** devices mid-life when new firmware becomes available, diagnostics and support

INTRODUCTION

With the **IGEL Universal Management Suite (UMS)**, managed workspaces can be administered quickly, easily and securely. In order to allow comprehensive client standardization, thin clients, zero clients and software thin clients, as well as fat clients with Windows 7 can be included in the remote management. This is possible thanks to the optionally licensable Unified Management Agent (UMA) for Windows 7. For straightforward integration into the existing IT environment, the UMS supports not only a wide range of operating systems but also databases and directory services such as Microsoft Active Directory. The UMS comes supplied with all IGEL thin client solutions. In combination with the high-performance, reliable IGEL hardware, you benefit from the most advanced managed workspace solution currently available on the market.



IGEL UD9 with view of the IGEL Universal Management Suite

THE ADVANTAGES OF THE IGEL UNIVERSAL MANAGEMENT SUITE

ECONOMICAL AND USER-FRIENDLY

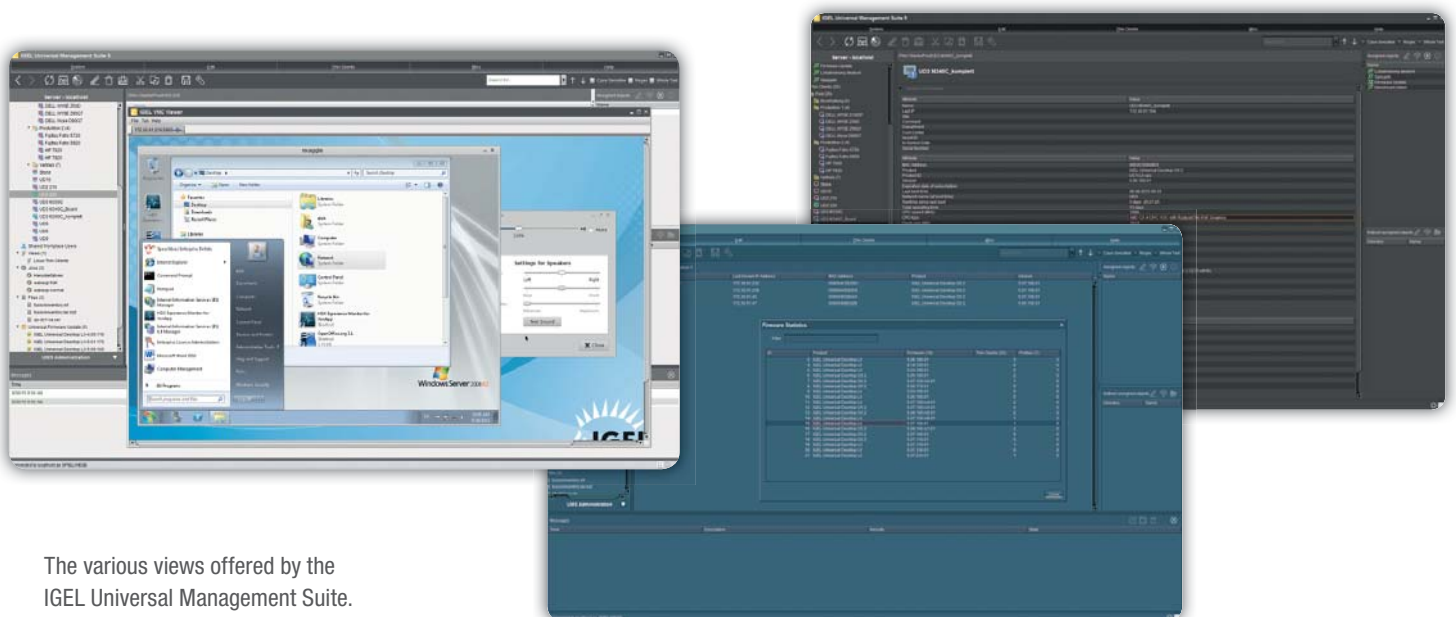
- ▶ **Fast installation**
This is carried out with the help of an installation wizard and takes just 20 minutes.
- ▶ **Easy to administer**
Most hardware and software settings can be made with just a few clicks of the mouse.
- ▶ **Uniform user interface**
The user interface for UMS is the same as for the local thin and zero client configuration. The additional remote management functions give the administrator complete control in the familiar, proven environment.
- ▶ **No scripting necessary**
Although scripting is supported, you will only need it for controlling the thin client configuration in the most exceptional circumstances.
- ▶ **Asset management**
Automatic capture of all your hardware information, licensed features and installed hotfixes.
- ▶ **Comment fields**
For various information such as location, installation date and inventory number.

OPEN ARCHITECTURE

- ▶ **Support for numerous operating systems**
The UMS can be run on all known versions of Microsoft Windows Server and Linux.
- ▶ **Access is independent of the operating system**
The configuration console operates on the basis of Java and enables the system to be administered from any device with the Java Runtime Environment.

SECURE AND ROBUST

- ▶ **Encrypted communication**
Certificate-based SSL/TLS-encrypted communication between remote management servers and clients to protect the system against unauthorized reconfiguration of the equipment.
- ▶ **Failsafe upgrade function**
If the thin or zero client machine fails (e.g. power outage or loss of the network connection) while the update is in progress it will still remain useable. The update process will be completed the next time the machine is rebooted.



The various views offered by the IGEL Universal Management Suite.

NETWORK-FRIENDLY

- ▶ **Based on standard communications protocol**
There is no need to reconfigure the routers and firewalls because they use HTTP and FTP.
- ▶ **Buddy update**
IGEL Linux thin clients that have already been updated can be used as update servers for other thin clients (e.g., in branch offices).
- ▶ **Partial update**
New updates or applications can be implemented via the Custom Partition (on IGEL Linux thin clients) and the Partial Update Packages (on IGEL Windows Standard Embedded thin clients) respectively. This means that there is no need to transmit the entire image over the network.

SCALABLE AND EFFICIENT

- ▶ **Support for extensive environments**
The IGEL UMS can be scaled to accommodate several thousand thin and zero clients (requires High Availability Extension).
- ▶ **Group and profile-based administration**
The thin and zero clients within a given organizational unit can be administered very easily by means of profiles (e.g., if an employee moves to another department, the administrator can change their settings with a simple drag-and-drop).

- ▶ **Trouble-free roll out**
IGEL clients can be automatically assigned to a group on the basis of either the relevant subnetwork or a list of MAC addresses made available by IGEL.
- ▶ **Comprehensive support for all configurations**
Most IGEL client settings, such as device or session configurations, can be processed via the mouse-enabled UMS user interface.
- ▶ **Transfer of administrative rights**
Large organizations can authorize a number of system administrators for different control and authorization areas.
- ▶ **Task planning**
Maintenance tasks can be scheduled at night so that day-to-day operations are not disrupted.
- ▶ **VNC shadowing**
Members of the IT support team have remote access to thin and zero client screens to enable them to rapidly identify problems and demonstrate solutions directly to users. Optionally, SSL-based VNC shadowing including user-based logging is available at no extra cost.
- ▶ **Linking to enterprise management systems**
With the help of the optional IGEL Management Interface (IMI), the UMS can be linked to existing enterprise management systems (e.g. Microsoft SCCM or IBM Tivoli) via a standardized REST API.



The IGEL Universal Management Suite is bundled with every IGEL product.

IGEL UNIVERSAL MANAGEMENT SUITE (UMS) SPECIFICATIONS

SUPPORTED PLATFORMS

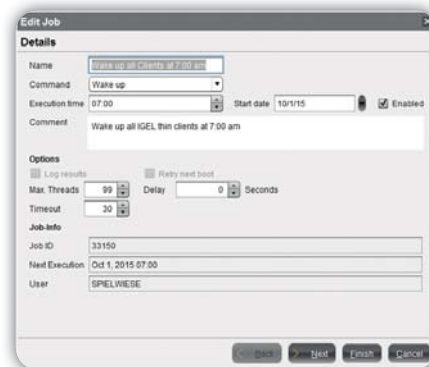
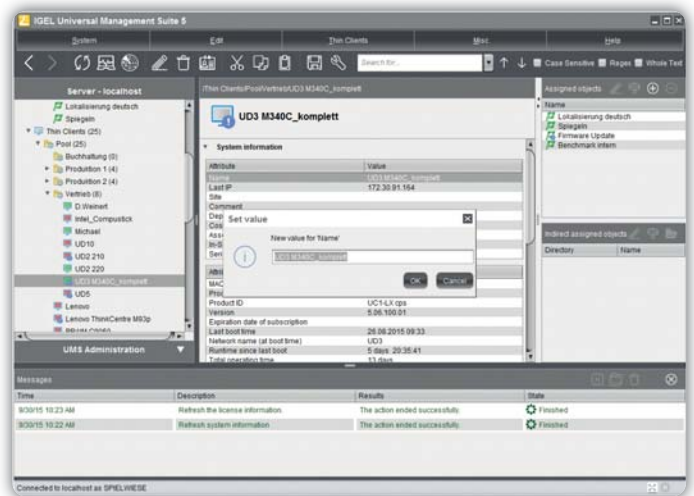
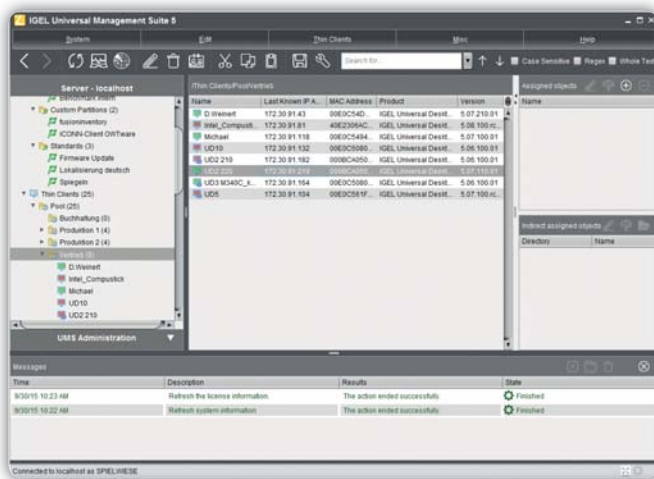
UMS Server	<ul style="list-style-type: none"> · Microsoft Windows Server 2008 / 2008 R2 / 2012 / 2012 R2 (x86, x86_64) · Ubuntu 10.04, 12.04, 14.04 (x86, x86_64) · Redhat 6 (32 bit, x86)
UMS Console	<ul style="list-style-type: none"> · Microsoft Windows 7, Windows 8.x · Ubuntu 10.04, 12.04, 14.04 · Redhat 6 (32 bit)
Databases	<ul style="list-style-type: none"> · Oracle 10g / 11g / 12c (with version 4.09.100) – Cluster Support · Microsoft SQL Server 2008 / 2008 R2 / 2012 / 2014 (with version 4.08.100) – Cluster Support · PostgreSQL Version 8.2 and above · Apache Derby 10

SECURITY FEATURES

- ▶ SSL/TLS communication
- ▶ User / password authentication
- ▶ Active Directory groups can be used for access rights management
- ▶ Local client certificates
- ▶ Full and reliable backup functionality

SUPPORTED LANGUAGES

- ▶ English
- ▶ German
- ▶ French
- ▶ Dutch
- ▶ Chinese (Simplified, Traditional)
- ▶ Spanish
- ▶ Italian



Top left: Classic view of the IGEL Universal Management Suite
 Top right: Here you see the thin clients, each with their settings and assigned profiles
 Right: The execution of regular jobs can be suspended on particular days – e.g. public holidays

Universal Desktop Converter 2 (UDC2)



PROFILE

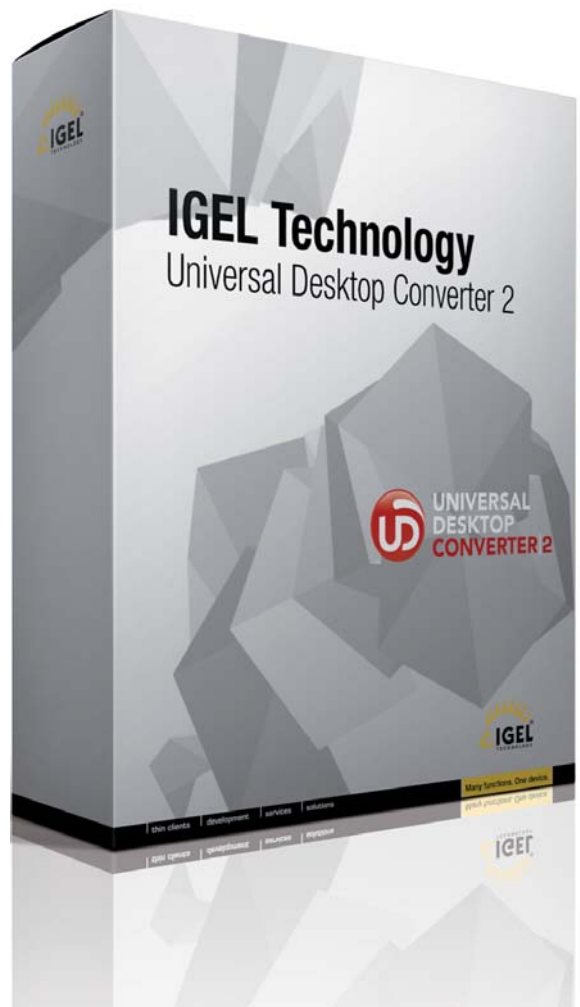
The Universal Desktop Converter 2 (UDC2) thin client software provides a highly effective alternative to traditional thin client hardware. The software is installed as the operating system on PCs, notebooks and select thin clients, and turns the hardware into a powerful software-based and universally deployable thin client allowing secure access to almost all centralized IT infrastructures. Users have stable and reliable access to cloud computing services, server-based computing (SBC) applications and virtualized desktops (VDI). The local desktop operating systems are unified and standardized, and are centrally managed by IGEL's user-friendly Universal Management Suite (UMS), the industry's leading device management platform. The UDC2 software is available at a low, one-time cost. The UMS is included – free.

FEATURES AND BENEFITS

- ▶ **Cost-effective, no additional hardware investment**
Extends life of old/depreciated desktop hardware.
- ▶ **Access to a wide range of centralized IT infrastructures**
Future-proof desktop access solution.
- ▶ **IGEL Universal Management Suite included with delivery**
Efficient, secure and site-independent remote administration of all devices, standardized management of PC and notebook platforms, and existing IGEL thin clients.
- ▶ **Standardization** of desktop operating systems on PCs and thin clients.
- ▶ **Power management** for mobile devices (notebooks).

SHARED MANAGEMENT OF PCS AND THIN CLIENTS

With IGEL's **Universal Desktop Converter software (UDC)** and the **IGEL Universal Management Suite (UMS)** administration software you can have fast, secure and centralized remote management of heterogeneous hardware installations. This ensures centralized management of PC, notebook and thin client hardware within a heterogeneous IGEL Universal Desktop Infrastructure.



INSTALLATION

There are four ways of carrying out the installation:



Installation from DVD:
ISO file from IGEL UDC or
IGEL FTP server



Installation via USB:
UDC2Stick from IGEL
UDC or IGEL FTP server



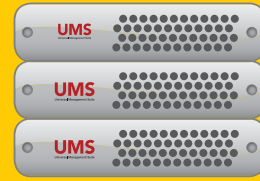
UDC token
installation



IGEL UDC Deployment Appliance
"PXE Server" with web GUI

LICENSE DISTRIBUTION

In addition to the software, the UDC token also contains the license (SIM card), which alternatively can be distributed via the UMS server.



IGEL UMS server

SUPPORTED HARDWARE

THIN CLIENTS

The following thin client hardware has been tested and is supported by IGEL:

Acer

- ▶ Veriton N260G
- ▶ Veriton N281G
- ▶ Veriton N2110G

Dell / Wyse

- ▶ C90LE
- ▶ C90LEW
- ▶ D10D
- ▶ D50D
- ▶ R50L
- ▶ Z50D
- ▶ Z90Q7

Lenovo

- ▶ ThinkCentre M32

Fujitsu

- ▶ Futro S450-2
- ▶ Futro S550
- ▶ Futro S550-2
- ▶ Futro S700
- ▶ Futro S720
- ▶ Futro S900
- ▶ Futro S920
- ▶ Futro X913
- ▶ Futro X923

Advantech-DLoG

- ▶ MTC 6

Onyx Healthcare

- ▶ Venus-222

Stone

- ▶ N130 Notebook

Samsung

- ▶ TC190
- ▶ TC240

HP

- ▶ t510
- ▶ t5565
- ▶ t5630w
- ▶ t5730
- ▶ t5735
- ▶ t5745
- ▶ t610
- ▶ t620
- ▶ t820

PCS

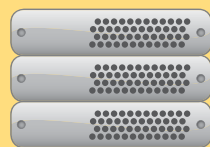
Use your existing PC hardware (HP, Dell, etc.) and turn it into a reliable and secure IGEL Universal Desktop.



MANAGEMENT

of hardware and session settings

IGEL Universal Management
Server and databases
(Windows and Linux)



IGEL Universal
Management
Console (Java)

IGEL UDC SPECIFICATIONS

SYSTEM REQUIREMENTS

RAM	1 GB
Flash- / HDD-Memory (IDE, USB or SATA)	1 GB
BIOS requirements	USB boot support, alternative: DVD-Boot support
Minimum requirements Microsoft RemoteFX	CPU ≥ 800 MHz, SSE2 Support

SUPPORTED THIN CLIENTS

Supported platforms	Acer Veriton N260G / N281G / N2110G Advantech-DLoG MTC 6 DELL / Wyse C90LE / C90LEW / D10D / D50D / R50L / Z50D / Z90Q7 Fujitsu Futro S450-2 / S550 / S550-2 / S700 / S720 / S900 / S920 / X913 / X923 HP t510 / t5565 / t5630w / t5730 / t5735 / t5745 / t610 / t620 / t820 Lenovo ThinkCentre M32 Onyx Healthcare Venus-222 Samsung TC190 / TC240 Stone N130 Notebook
Features	Full driver support, ACPI support

SUPPORTED PCS

Supported platforms	Standard x86-compatible PC hardware
Features	Driver Support: <ul style="list-style-type: none"> ▶ Storage Controller (IDE/SATA) ▶ Network Controller ▶ Graphics card (VESA mode only) ▶ No support for multi-media redirection with VMware Horizon ▶ Sound card (some models are supported) ▶ Power management for mobile devices (notebooks) ▶ Full touchpad support

AVAILABLE COMPONENTS

UDC token (USB)	Installation medium, license not included
UDC LX	License, token not included

WHY USE SOFTWARE THIN CLIENTS?



- ▶ No additional hardware costs, **cost-effective** to buy
- ▶ **Immediately frees up funds** in the IT budget that can then be used for other investments
- ▶ **Enables the step-by-step introduction** of SBC and VDI (virtual desktops)
- ▶ Efficient, secure and site-independent **remote administration** of the devices
- ▶ **Standardized management** of PCs, notebooks and thin clients
- ▶ **Dramatic reduction** in desktop **administration costs**
- ▶ **Extends the lifecycle** of new and existing desktop hardware
- ▶ **Future-proof, update-enabled** desktop thin client solution
- ▶ **Standardized** unified PC and Thin Client **GUI** in mixed environments

Unified Management Agent (UMA)



PROFILE

The IGEL Unified Management Agent (UMA) for Windows 7 delivers Unified Management of the future, today. Devices running a Windows 7 operating system and an installed UMA are reliably and securely managed by our Universal Management Suite (UMS). In this way UMA managed devices fit seamlessly into the IGEL solution portfolio – whether they are thin clients, notebooks or workstations. A change or conversion of the existing Windows operating system is not necessary. There are three different ways to install the UMA: automatically in line with the group policy in conjunction with an Active Directory, manually via an executable file, or alternatively by means of software packaging and distribution using third-party software.

TARGET GROUP

The Unified Management Agent is the perfect solution for all companies looking for a low-cost, secure and efficient management tool allowing them to save time when administering existing PCs, notebooks and thin clients. In addition, the Agent is also aimed at customers who would like to continue operating and centrally manage their PCs and notebooks with the Windows 7 operating system with the help of the IGEL UMS.

BENEFITS

- ▶ Reduced administrative effort
- ▶ Software packaging (UCB optional) and deployment (UMS) on Windows 7 (UMA) based devices
- ▶ Standardized look & feel, including general profile
- ▶ Central management interface for all end devices in the workspace
- ▶ Reduced costs as no additional management software required
- ▶ Industry-leading Universal Management Suite (UMS) included free of charge

FUNCTIONS CONFIGURABLE VIA UMS PROFILE

Sessions:

- ▶ Citrix Receiver
- ▶ RDP
- ▶ Horizon Client
- ▶ Microsoft Internet Explorer
- ▶ Microsoft Media Player

Accessories:

- ▶ Set-up sessions
- ▶ Sound mixer
- ▶ Windows services

User interface:

- ▶ Display
- ▶ Language
- ▶ Keyboard/mouse

Devices:

- ▶ Printers

Network:

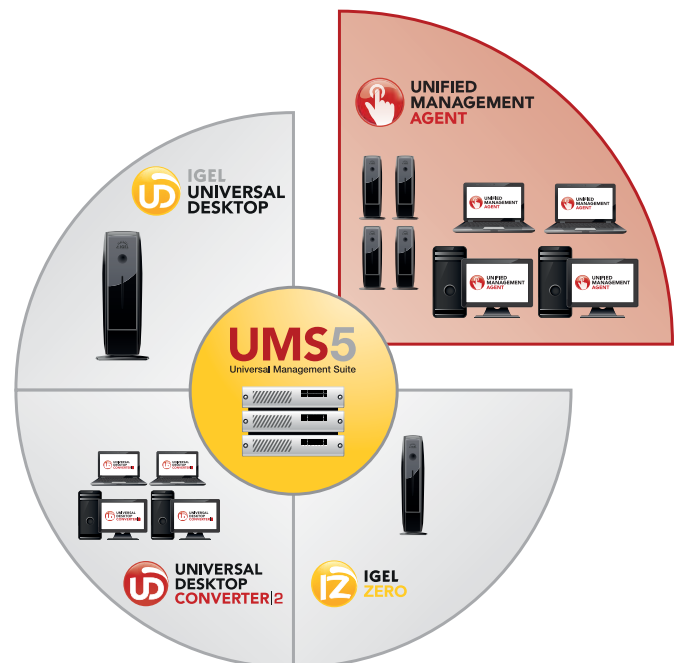
- ▶ LAN/WLAN interface
- ▶ Network driver

Security:

- ▶ Windows automatic log-on
- ▶ Active Directory
- ▶ Network security

System:

- ▶ Date & time
- ▶ Updates
- ▶ Remote management
- ▶ Shadowing
- ▶ Power management
- ▶ Firmware customization
- ▶ Local set-up (optional)



TECHNICAL REQUIREMENTS

- ▶ Management: IGEL Universal Management Suite 5 (UMS 5)
- ▶ Client: Microsoft Windows 7, 32 or 64 bit (Desktop or Embedded)

LICENSING

- ▶ Use of the Unified Management Agent (UMA) to manage end devices from the UMS requires a paid UMA license for each Windows 7 device. Further information can be found on **page 42**.

High Availability (HA)



HIGHLY AVAILABLE THIN AND ZERO CLIENT MANAGEMENT WITH LOAD BALANCING

IGEL thin and zero clients are secure and reliable – even without a connection to the remote management software. With the Universal Management Suite (UMS), up to 500 end devices can be reconfigured as standard – simultaneously and automatically. In certain cases, however, extra scalability, redundancy or availability is required.

PROFILE

High Availability (HA) is an **optional extension for the IGEL Universal Management Suite (UMS)** and enables the UMS to offer any degree of scalability, availability and redundancy. With HA, even **large-scale thin and zero client environments** (several hundred end devices) can be **reconfigured simultaneously**. The HA extension is compatible with all IGEL Universal Desktop thin clients and IGEL zero clients – including PCs and thin clients which were standardized with the help of the IGEL Universal Desktop Converter (UDC) migration software.

TYPICAL USAGE SCENARIOS

- ▶ **Enterprise:** Management of large-scale thin client environments with several hundred thin and zero clients
- ▶ **Compliance:** Redundancy of IT systems and data (e.g., Basel II / III or HIPAA)
- ▶ **Up-to-date settings:** Highly available distribution of new device configurations
- ▶ **Shared WorkPlace:** user-dependent (simultaneous) device configuration

FEATURES

- ▶ **UMS Server:** 2+ instances can be used (redundancy or scaling)
- ▶ **UMS Load Balancer** (can also be used as a redundant system)
- ▶ **UMS Database:** High availability through mirroring

BENEFITS

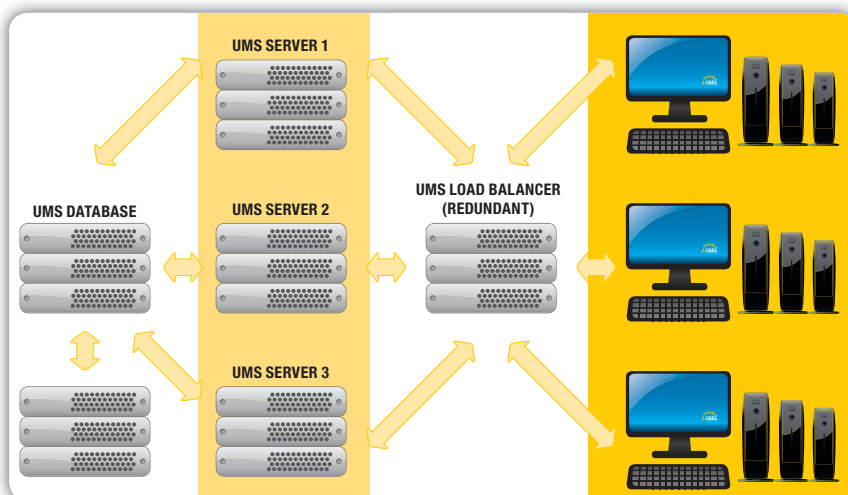
- ▶ **Load distribution:** The HA extension ensures that all planned configuration changes are distributed in a timely manner to all intended clients, regardless of the number of simultaneous booting processes.
- ▶ **Legal security:** HA ensures compliance with the latest international standards and regulations such as Basel II / III or HIPAA.
- ▶ **Individual profiles:** When the Shared WorkPlace feature is activated, IGEL thin clients can be configured individually depending on the particular user by means of a personal settings profile. The HA extension ensures that all users can work with their individual settings at all times.

LICENSING

- ▶ Optional extension for the IGEL Universal Management Suite (UMS)
- ▶ Each license package covers 50 managed thin or zero clients

TECHNICAL REQUIREMENTS

- ▶ UMS 4
- ▶ The system requirements for the respective UMS version used apply
- ▶ Supported database backends:
 - Oracle DB (11g or higher) cluster
 - Microsoft SQL Server (2008 or higher) cluster



IGEL Universal Management Suite with High Availability Extension

Universal Customization Builder (UCB)



EXPAND IGEL FIRMWARE YOURSELF – EASILY AND RELIABLY!

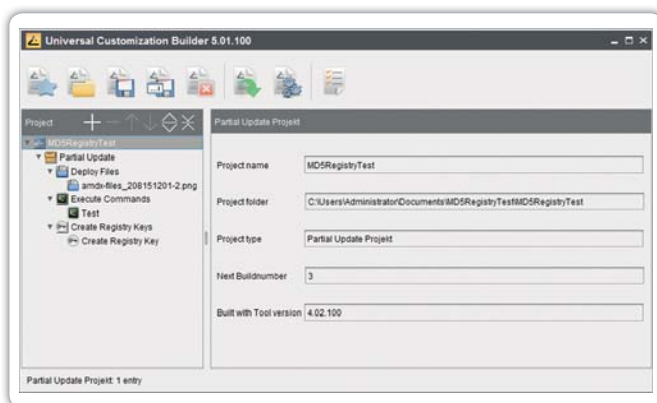
With the Universal Customization Builder (UCB), the firmware for IGEL Universal Desktop thin clients can easily and reliably be expanded and adapted to meet your needs. For example, you may choose to install local device drivers or special applications. You can even set important Windows registry keys – without detailed knowledge of Shell or Windows scripting!

PROFILE

The Universal Customization Builder (UCB) is an **optional extension of the IGEL Universal Management Suite (UMS)**, which enables you to not only put together individual expansion packages for the IGEL Universal Desktop firmware, but also to pack them and roll them out on a centralized basis. Numerous helpful features such as predefined templates, the user-friendly GUI or IGEL helpdesk support make this reliable application easy to use. The UCB supports all IGEL Universal Desktop thin clients with Linux and Windows Embedded, including PCs and thin clients which have been standardized with the help of the IGEL Universal Desktop Converter (UDC) migration software.

FEATURES

- ▶ **Simple procedures for generating, packing and rolling out firmware expansion packages** for IGEL Linux (custom partition) and Windows Embedded Standard (partial update)
- ▶ **Predefined templates:** Task-oriented for typical application scenarios
- ▶ **Debugging:** Automatic package creation with syntax checks
- ▶ **Automatic versioning** within customization projects
- ▶ **Support** for the packages created from the IGEL helpdesk



View of the Universal Customization Builder (UCB)

TYPICAL USAGE SCENARIOS

- ▶ **Supplementing local apps:** Rolling out applications for local operations, e.g., checkout software for retailers and other sector-specific software, on a centralized basis
- ▶ **Upgrading device drivers:** For sector-specific peripherals or original drivers
- ▶ **Setting registry keys:** Individually adapting Windows Embedded Standard
- ▶ **Kiosk systems:** Equipping thin clients with special local applications or software clients in order to operate them independently of the company network, e.g., as time recording terminals

BENEFITS

- ▶ **Reduced project costs:** With the UCB, you can perform firmware expansions quickly and easily yourself (without assistance from an external service provider)
- ▶ **Ease of operation:** User-friendly GUI with the familiar look and feel of the IGEL UMS. No detailed knowledge of Shell or Windows scripting necessary (templates)
- ▶ **Quick, low-cost rollout:** Convenient, remote rollouts using IGEL UMS (comes supplied with all IGEL Universal Desktop thin clients)
- ▶ **Reliable processes and functions:** User prompting via GUI and templates, simple debugging and support from IGEL
- ▶ **Transparency:** Automatic versioning within customization projects
- ▶ **Reduced network load:** No distribution of Windows images or snap shots required

LICENSING

- ▶ A UCB license (fee applies) is required to use the optional UCB extension for the IGEL Universal Management Suite (UMS)
- ▶ In order to obtain a UCB license, you must successfully take part in a paid **IGEL UCB training course** (In-house or classroom training)

TECHNICAL REQUIREMENTS

- ▶ UMS 4
- ▶ The system requirements for the particular UMS version used apply

Universal MultiDisplay (UMD)



The software solution **IGEL Universal MultiDisplay** allows you to combine up to four Universal Desktop standard devices cost-effectively into one workstation with up to eight screens that can be remotely administered. The heart of the solution is the IGEL UD5 LX (or UD6 LX) thin client which provides two monitor connections. With an integrable network card, it can be set as the master device and manage up to three Linux-based standard thin clients, that automatically configure themselves as satellites, each providing up to two additional monitors.

FEATURES

- ▶ Connect multiple IGEL Thin Clients to one device supporting multiple displays
- ▶ Display large amounts of information simultaneously on one workplace
- ▶ Available for IGEL Linux

MULTIDISPLAY SCENARIOS

- ▶ Trader workstations in the financial sector
- ▶ Visualization/switching stations and control panels in production
- ▶ Emergency call centers, logistics and transportation
- ▶ Public displays and digital signage in retailing
- ▶ Building and system monitoring in facility management

REQUIREMENTS MASTER

- ▶ UD5 LX or UD6 LX
- ▶ Additional PCIe network card for dedicated multidisplay network included in Starter Kit
- ▶ Display license for each additional display

REQUIREMENTS SATELLITE

- ▶ No special hardware required – all UD devices can be used as satellites
- ▶ Included in every feature package

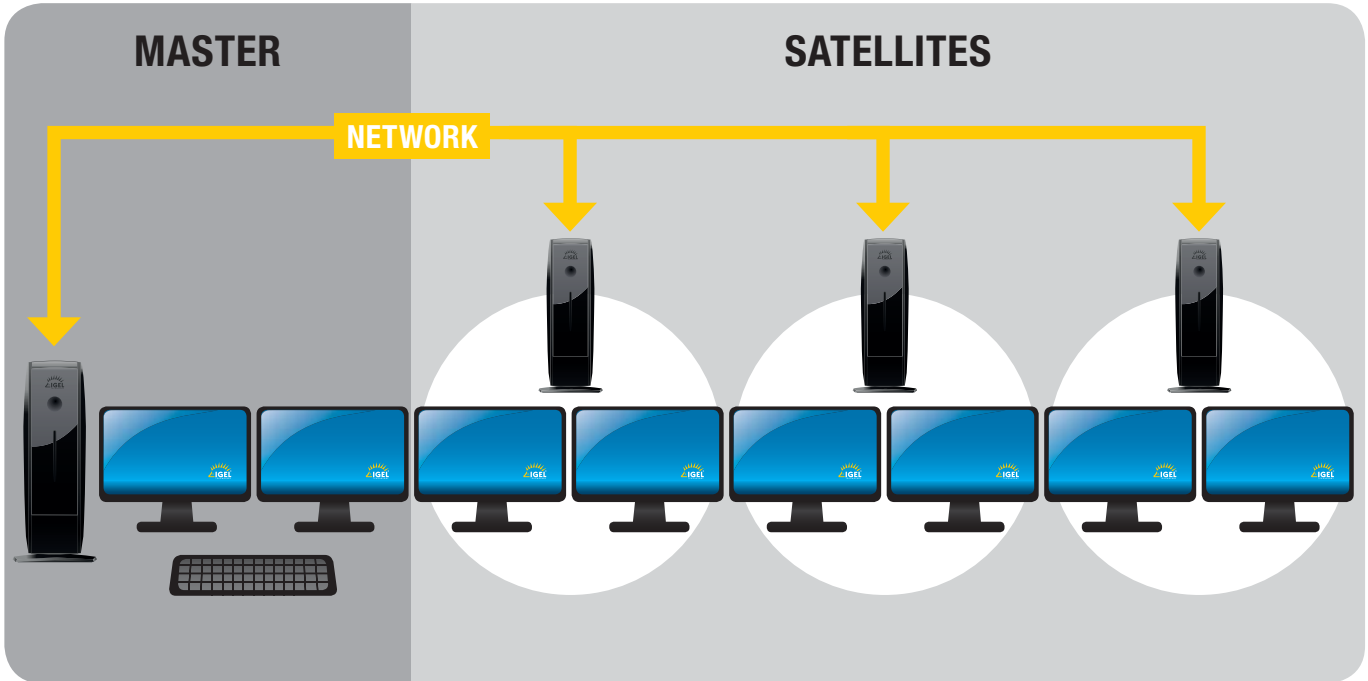
RESOLUTION

- ▶ UD2 max.: 1920 x 1200 pixel
- ▶ UD3 max.: 1920 x 1200 pixel
- ▶ UD5 max.: 2560 x 1600 (DisplayPort); max. 1920 x 1200 (DVI)
- ▶ UD6 max.: 2560 x 1600 (DisplayPort); max. 1920 x 1200 (DVI)
- ▶ UD9 max.: 1920 x 1080 pixel
- ▶ UD10 max.: 2560 x 1600 pixel

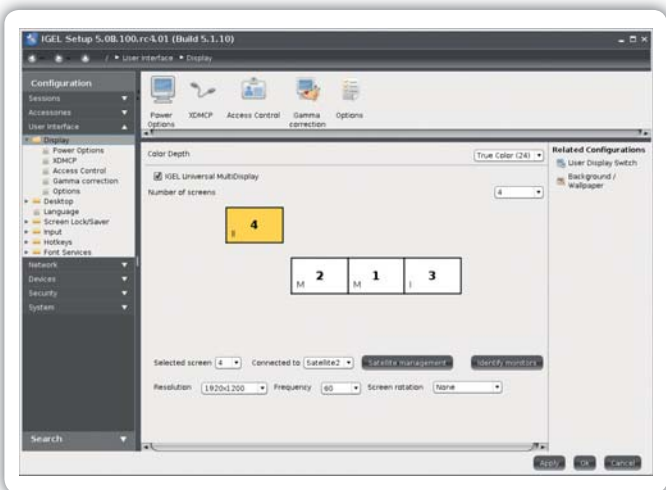
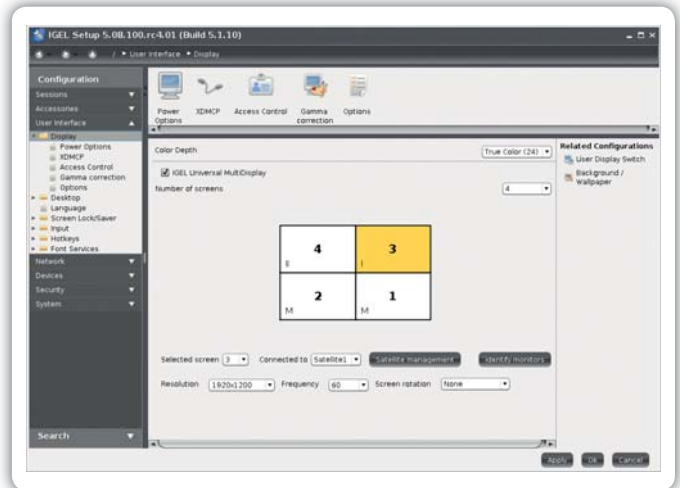
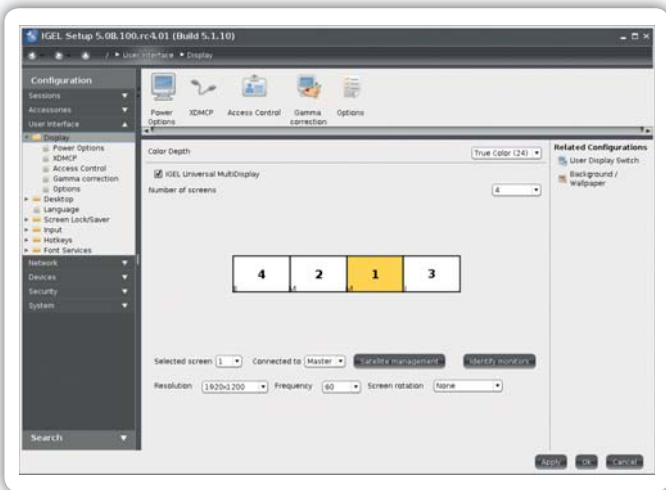
LICENSING

- ▶ License per additional display
- ▶ License is stored and managed on the master device





IGEL Universal MultiDisplay (UMD) with master device (e.g., UD5 LX) and satellite (e.g., UD2 LX)



Management of IGEL Universal MultiDisplay (UMD) in the IGEL Universal Management Suite (UMS)

IGEL Management Interface (IMI)



PROFILE

With the IGEL Management Interface (IMI), the IGEL Universal Management Suite (UMS) can connect via a standard REST API to existing enterprise management systems (such as Microsoft SCCM or IBM Tivoli). In addition, IMI provides the interface for REST-compatible programming languages to connect autonomous systems together. So the management of IGEL Clients can take place from the Enterprise Management system or through additional company-specific scripts or programs, in conjunction with the industry-leading IGEL Universal Management Suite (UMS).

TARGET GROUP

IMI is aimed at enterprise customers and larger medium-sized companies with a large number of sites and significant administrative outlay. However, it can also be used by system houses and providers of cloud desktops or DaaS/ CaaS that offer their customers IT workstations with devices.

The IGEL Management Interface supports all IGEL Universal Desktop thin clients with a Linux and Windows Embedded operating system, IGEL zero clients and all end devices, which were standardized with the help of the IGEL Universal Desktop Converter (UDC) migration software. All Windows 7 operating systems, which are connected to the UMS with the Unified Management Agent (UMA), are also supported. The standardized REST API also makes it possible to automate endpoint management through programs (e.g. Java, C#, PowerShell or Ruby) and customer-specific scripts.

APPLICATIONS

- ▶ Real-time monitoring of device information
- ▶ Compiling important data and overviews in dashboards
- ▶ Generating partially or fully automatic new administration workflows
- ▶ Providing selected or reduced settings options for the administrators of sub-areas

FEATURES

- ▶ HTTPS-based standardized interface
- ▶ Certificate-based authentication
- ▶ Encrypted communication of all components involved

BENEFITS

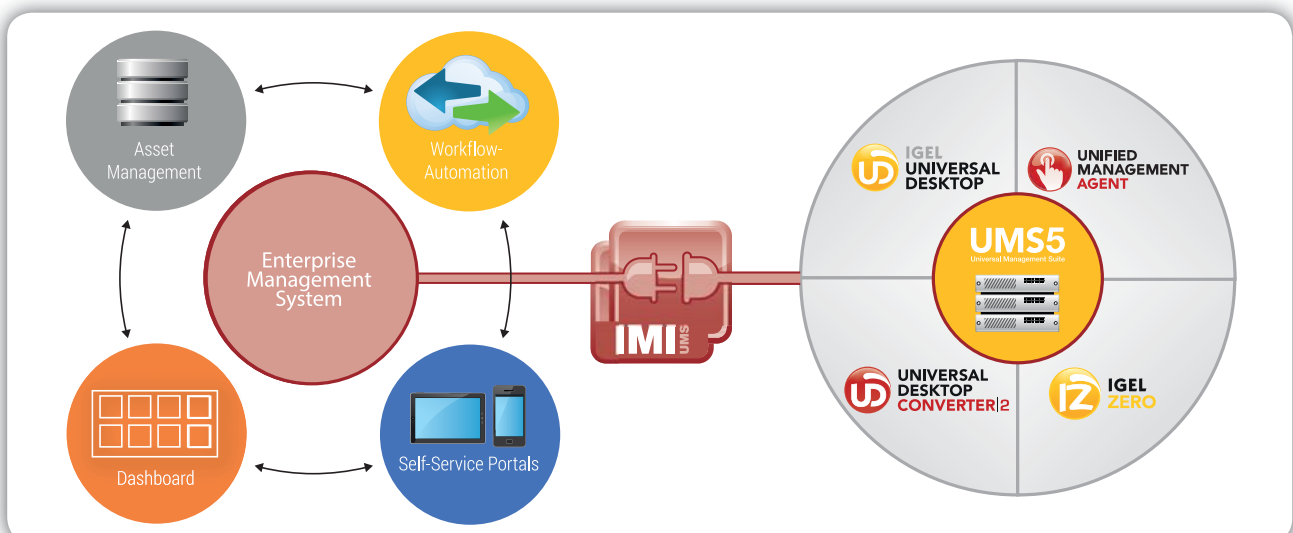
- ▶ Standardized company-wide IT management
- ▶ Increased level of automation within large installation environments
- ▶ Standardized, secure and central management of complex IT infrastructures
- ▶ Preservation of valuable IT resources and optimization of IT infrastructure

TECHNICAL REQUIREMENTS

- ▶ IGEL Universal Management Suite 5 (UMS 5)
- ▶ REST-compatible interface/programming language

LICENSING

- ▶ Use of the IGEL Management Interface (IMI) requires a paid IMI license for each UMS cluster. Further information can be found on [page 42](#).



Shared WorkPlace (SWP)



FEATURES

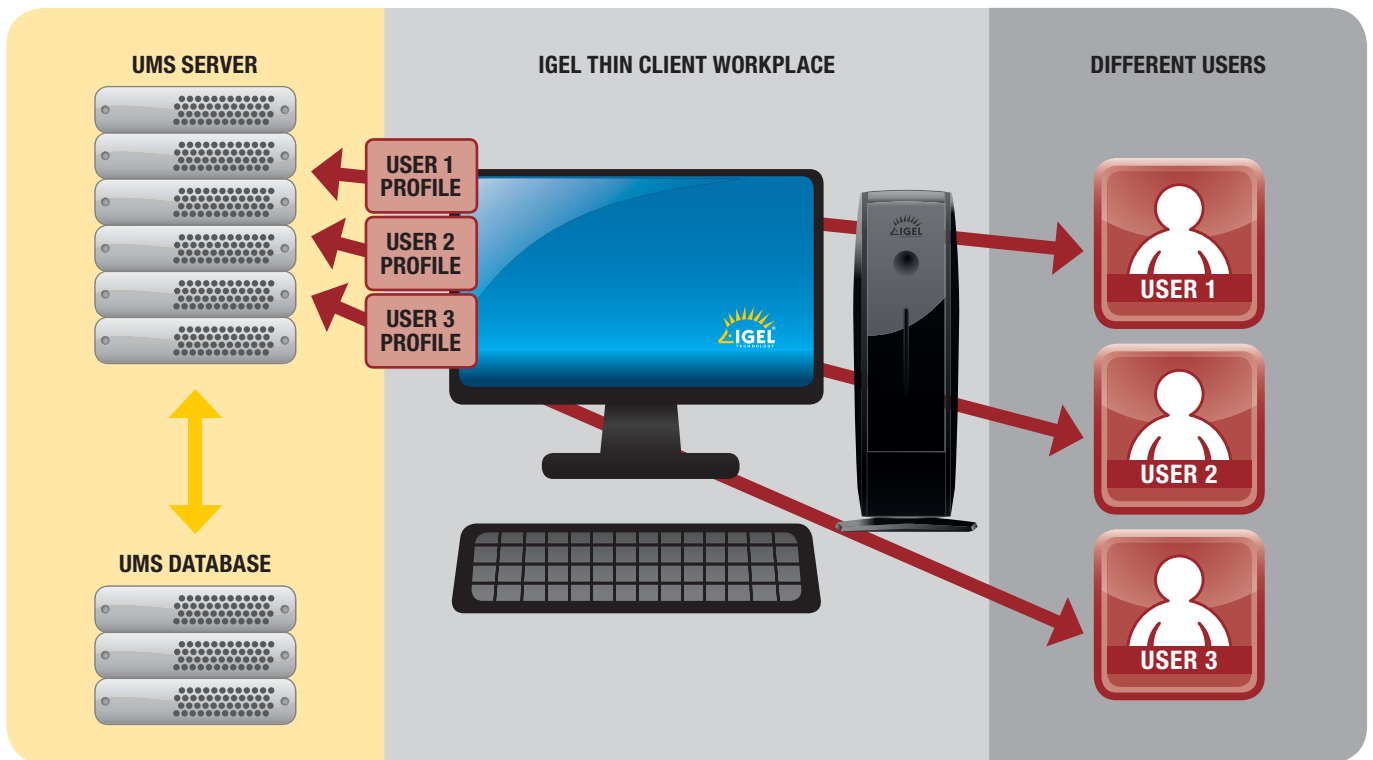
- ▶ It allows user-dependent configuration based on setting profiles.
- ▶ It allows configuration settings to be made for factors such as session types or right/left-handed mouse-button operation.
- ▶ Change the screen resolution on the fly without rebooting.

TYPICAL AREAS OF APPLICATION

- ▶ Workstations used for shift work or in call centers, where different staff members use the same device and need their own individual settings (e.g., keyboard language, mouse-button configuration for right/left-handed operation, session types).
- ▶ Roaming environments, where users frequently switch workstations, such as in hospitals and at service/ticket counters, checkouts (POS) and customer reception areas.
- ▶ User authentication

LICENSING

- ▶ This is an optional feature that can be separately licensed for IGEL thin client software.
- ▶ This feature can also be used in mixed environments with Shared WorkPlace desktops and standard workplaces.



IGEL Universal Desktop Thin Client with Shared WorkPlace Feature

IGEL HARDWARE

THE IGEL UNIVERSAL DESKTOP

The IGEL Universal Desktop Strategy offers you the widest possible range of connectivity options at an optimal price-performance ratio, and a broad spectrum of use cases thanks to special hardware options, a seamless user experience, and high-level security. IGEL devices also provide you with a much longer service life and higher cost savings than other conventional thin clients. Additional benefits include a highly efficient management system and low energy usage and operational costs.

IGEL Universal Desktop firmware contains multiple integrated protocols, software tools and software clients, features that allow your end users to choose from a wide variety of central IT infrastructures. These include classic server-based computing environments (Microsoft Remote Desktop Services, Citrix XenApp), virtual desktop environments (VMware, Citrix XenDesktop, Red Hat Enterprise Virtualization or Microsoft VDI-Suite), and cloud-hosted applications. IGEL Universal Desktops also support legacy host systems and enable multimedia streaming and VoIP via thin client and headset (Softphone) in addition to Java- or Web-based applications.

**CITRIX®
READY**

Microsoft Partner

Gold OEM
Gold Application Development

**vmware®
READY**

END-USER
COMPUTING

UNIVERSAL DESKTOP ADVANTAGES

- ▶ **Low investment costs:** no unnecessary hardware or software (modular design, management solution included at no extra cost)
- ▶ **Low operating costs:** energy-efficient hardware, an intuitive management solution, no update costs; long service life (3 years of firmware updates even after model end-of-life), free 5-year warranty for the UD2, UD3, UD5, UD6 series
- ▶ **Free support and service** (during warranty period)
- ▶ **Flexible deployment:** full connectivity for peripheral devices as well as centralized IT systems and Web/VoIP/multi-media applications
- ▶ **Future-ready investment:** high processor and graphics performance, large RAM and flash memory, continuously developed firmware including technology and security updates
- ▶ **Real potential for consolidation:** PC, terminal, telephone and print server combined into one economical end-user device means less need for middleware
- ▶ **Outstanding user convenience:** top-notch design and careful assembly, stable firmware, high performance due to direct access to server-based applications, virtual desktops and cloud based applications, no cooling fans mean no noise, minimal generation of heat



ZERO CLIENTS – THE IGEL WAY

The IGEL Zero Clients for Citrix HDX, Microsoft RDS/RemoteFX and VMware Horizon deliver a true zero client experience. At the same time they overcome typical zero client limitations you may know from other vendors, like e.g., inflexibility, missing manageability and no technical support.

IGEL delivers specialized zero clients without compromise. They are dedicated and optimized to one of the three leading virtualization solutions, and they include free technical support. Using the appliance mode the IGEL Zero Clients boot fast and directly into VDI sessions like Citrix XenDesktop or Horizon.

Experience “Zero Touch Deployment” through fast and rule based configuration at the roll out phase. Reduce the desktop management to nearly zero, by profile based, automated management of settings. For you this means zero local management efforts.

IGEL Zero Clients are future proof. Free firmware updates allow you to make use of the latest features. If at any time you decide to change your VDI solution you can continue to use your zero client hardware. An UD-Upgrade-License will enable your IGEL Zero Clients to connect to other leading VDI solutions.

BENEFITS OF THE IGEL ZERO CLIENTS AT A GLANCE:

- ▶ **Specialized zero clients** dedicated to either Citrix HDX, Microsoft RDS/RemoteFX or VMware Horizon offering rich user experience
- ▶ **Low administration** efforts through zero touch deployment and zero local management
- ▶ **Affordable, cost efficient** desktop solution
- ▶ **Future proof** through free firmware updates and an **upgrade path** to other VDI solutions
- ▶ **Free 3 year hardware warranty**



HARDWARE OVERVIEW

Here you can compare the different hardware platforms in terms of performance, features and available interfaces. The full specifications of all hardware series can be found on the data sheets starting on page 28.



HARDWARE	IZ2/UD2		IZ3/UD3		UD5	
CPU	Intel Atom 1.5 GHz (Single-Core)		VIA Eden X2 1 GHz (Dual-Core)		Intel Celeron J1800 2.41–2.58 GHz (Dual-Core)	
Power consumption Idle Sleep	5W 1W		11W 1W		8W 1W	
Operating Systems	LX	–	LX	W7 / W7+	LX	W7 / W7+
Flash	2 GB	–	2 GB*	4 GB / 8 GB*	2 GB*	4 GB / 8 GB*
RAM	2 GB (DDR3L)	–	1 GB (DDR3)	2 GB (DDR3)	2 GB (DDR3L)	2 GB (DDR3L)
Power supply	external		external		external	
Video memory	64–256 MB		128–256 MB		64–512 MB	
Max resolution	Dualview 1920 x 1200		Dualview 1920 x 1200		1x DisplayPort 1.1a 2560 x 1600 1x DVI-I 1920 x 1200	
CONNECTIVITY	IZ2/UD2		IZ3/UD3		UD5	
USB 2.0 / USB 3.0	3 / 1		2 / 2		4 / 2	
DVI-I**	1		1		1	
DisplayPort / DVI-D	– / 1		– / 1		1 / –	
Serial Port					2	
Parallel Port						
PS/2			1		1	
RJ45 Ethernet	1		1		1	
Audio (Line-out, Mic-in)	1		1		1	
OPTIONS	IZ2/UD2		IZ3/UD3		UD5	
USB to Serial/Parallel Adapter	x / x		x / x		x / x	
DisplayPort to DVI-Adapter					x	
Dualview Y-Cable (VGA & DVI)						
Smartcard Reader (PC/SC)			x		x	
VESA Bracket	x		x		x	
Connectivity Bar 2 x serial USB anti-theft / WLAN			x / x			
Connectivity Bar parallel USB anti-theft / WLAN					x / x	
Touchscreen						
WLAN						
HARDWARE	IZ2/UD2		IZ3/UD3		UD5	
IZ HDX	IZ2 HDX		IZ3 HDX			
IZ RFX	IZ2 RFX		IZ3 RFX			
IZ Horizon	IZ2 Horizon		IZ3 Horizon			
Universal Desktop (UD) IGEL Linux (LX)	UD2 LX		UD3 LX		UD5 LX	
Universal Desktop (UD) W7 / W7+				UD3 W7 / UD3 W7+		UD5 W7 / UD5 W7+

*Optional 16 GB

**A DVI-VGA adapter is enclosed free of charge with each order. If you do not need it, please mention this when you place your order.

***Integrated as standard



UD6		UD9 21"		UD10 24"	
Intel Celeron J1900 1.99 – 2.42 GHz (Quad-Core)		Intel Atom N270 1.6 GHz (Single-Core)		VIA Eden X2 1 GHz (Dual-Core)	
8W 1W		38W 2W		31W < 1W	
LX	W7 / W7+	LX	W7 / W7+	LX	W7 / W7+
2 GB*	4 GB / 8 GB*	2 GB	4 GB / 8 GB	2 GB*	4 GB / 8 GB*
2 GB (DDR3L)	2 GB (DDR3L)	1 GB	2 GB	1 GB (DDR3)	2 GB (DDR3)
external 64 – 512 MB		external 32 – 128 MB		external 128 – 256 MB	
1x DisplayPort 1.1a 2560x1600 1x DVI-I / Dualview 1920x1200		Dualview 1920 x 1080		Dualview Intern (FullHD) 1920 x 1080 1x DisplayPort 2560 x 1600	

UD6		UD9		UD10	
4 / 2		5 / –		3 / 2	
1		VGA			
1 / –				1	
2		2		2	
		1		1	
1		2		2	
1		1		1	
1		1		1	

UD6		UD9		UD10	
x / x		x / x		x / x	
x				x	
x		x		x***	
x					
x / x					
		x		x	
		x		x	

UD6		UD9		UD10	
UD6 LX		UD9 LX UD9 LX Touch		UD10 LX UD10 LX Touch	
	UD6 W7 / UD6 W7+		UD9 W7 / UD9 W7+ UD9 W7 Touch / UD9 W7+ Touch		UD10 W7/UD10 W7+ UD10 W7 Touch / UD10 W7+ Touch

Excellent peripheral connectivity

IGEL Universal Desktops and IGEL zero clients can connect to almost any USB peripheral, such as a printer, scanner or smart phone – even in virtual desktop environments running VMware Horizon or Citrix XenDesktop. When other platforms are used, like Microsoft Remote Desktop Services, the IGEL thin clients support the embedded Fabulatech USB redirection, allowing external hardware to be connected correctly with your virtual desktop or server-based workspace.

Protect your network and data with bullet-proof security

IGEL Universal Desktops go way beyond the inherent security advantages of thin clients. All our devices support smartcard readers, and some models already have these as an internal option. This allows two-factor authentication during log-in and also productivity enhancements such as smooth roaming between shared desktops. We also work with other security devices such as USB tokens. To protect data, all IGEL Universal Desktops can have their USB ports disabled or made read-only using our Universal Management Suite.

ZERO COST, MAXIMUM USER EXPERIENCE, STRONG HARDWARE: ZERO CLIENTS – THE IGEL WAY!

There are two hardware platforms in our IZ zero client product line. The IZ2 series is affordable, space-saving and energy-efficient, while the IZ3 models come with dual-core processor and multiple connectivity options for peripherals. Select your preferred virtualization solution and combine it with the hardware best-suited for your requirements – zero clients specifically designed for Citrix HDX, Microsoft Remote Desktop Service (RDS) and VMware Horizon.



AVAILABLE HARDWARE & FEATURES

DEVICE	IZ2 	IZ3 
MODELS	<ul style="list-style-type: none"> › IZ2 HDX › IZ2 RFX › IZ2 Horizon 	<ul style="list-style-type: none"> › IZ3 HDX › IZ3 RFX › IZ3 Horizon
TARGET GROUPS & USE SCENARIOS	<ul style="list-style-type: none"> › extended Task-Worker › Office workers › for expanded multimedia requirements › x86 driver support 	<ul style="list-style-type: none"> › Office workers › Knowledge workers › For high multimedia requirements › x86 driver support › Numerous connectivity options for peripherals
UPDATING	✓	✓
UD UPGRADE*	✓	✓
3-YEAR WARRANTY	✓	✓
CPU	Intel Atom E3815 1,5 GHz (Single-Core)	VIA Eden X2 1 GHz (Dual-Core)
RAM	2 GB DDR3L	1 GB DDR3
FLASH	2 GB	2 GB
VIDEO MEMORY	64 – 256 MB	128 – 256 MB
MAX RESOLUTION	Dualview 1920 x 1200	Dualview 1920 x 1200
POWER CONSUMPTION Idle Sleep	5W 1W	11W 1W
POWER SUPPLY	external	external

* Upgrade to Universal Desktop Thin Clients, including three years end-of-life maintenance and five years hardware warranty.



IZ HDX



PROFILE

The HDX zero clients from IGEL are solutions tailored to accessing Citrix XenDesktop and XenApp. They offer high performance at a low price. Citrix Appliance Mode enables the devices to boot quickly and directly to the virtual machine. Two available hardware platforms ensure that the specific performance and connectivity requirements of different workstations can be readily met.

FEATURES AND BENEFITS

- ▶ **Specialized HDX zero clients:** high-performance, reliable desktops for accessing XenDesktop and XenApp
- ▶ **Low-cost solution:** small non-recurring hardware investment, no hidden or ongoing costs, no subsequent costs
- ▶ **Easily updated and upgradable clients:** they are future-proof because new functions can be used as and when needed, and because they permit future migration to other VDI solutions using the existing IGEL zero client hardware
- ▶ **Automated, central remote administration:** quick and easy rollout, sharp reduction in management overhead, no local management required
- ▶ **Risk-free client testing:** request a test device at www.igel.com/eval

USE SCENARIOS

- ▶ **IZ2 HDX:** Workstations for extended task and office workers with expanded multimedia requirements, a large range of supported solutions (e.g., digital dictation or smart card authentication), dual view
- ▶ **IZ3 HDX:** Workstations for office and knowledge workers with relatively high multimedia requirements, a large range of supported solutions (e.g., digital dictation or smart card authentication), good peripheral connectivity options (USB 3.0, 2 x DVI, and optionally, a serial port, WLAN or concealed USB port in the base)





IZ RFX



PROFILE

The RFX zero clients from IGEL are the perfect solution for accessing Microsoft’s Remote Desktop Services (RDS), including Microsoft RemoteFX and Microsoft VDI. They offer powerful performance at a low price. The two IGEL hardware platforms on which the RFX zero clients are based are geared toward the specific performance requirements of different types of workstations. They each offer different connectivity options and driver support.

FEATURES AND BENEFITS

- ▶ **Specialized RFX zero clients:** powerful and reliable desktops for accessing Microsoft Remote Desktop Services (RDS)
- ▶ **Low-cost solutions:** small non-recurring hardware investment, no hidden or ongoing costs, no subsequent costs
- ▶ **Easily updated clients:** they are future-proof because new functions can be used as and when needed
- ▶ **Upgradable clients:** they permit future migration to other VDI solutions using the existing IGEL zero client hardware
- ▶ **Automated central remote administration:** quick and easy rollout, sharp reduction in management overhead, no local management required
- ▶ **Risk-free client testing:** request a test device at www.igel.com/eval

USE SCENARIOS

- ▶ **IZ2 RFX:** Workstations for extended task and office workers with expanded multimedia requirements, a large range of supported solutions (e.g., digital dictation or smart card authentication), dual view
- ▶ **IZ3 RFX:** Workstations for office and knowledge workers with relatively high multimedia requirements, a large range of supported solutions (e.g., digital dictation or smart card authentication), good peripheral connectivity options (USB 3.0, 2 x DVI, and optionally, a serial port, WLAN or concealed USB port in the base)





IZ Horizon



PROFILE

The Horizon zero clients from IGEL are the efficient and future-proof solution for accessing VMware's Horizon VDI solution. They are reliable, low-priced and have a long service life. Two special device platforms enable the Horizon zero clients to meet the specific performance requirements of traditional types of workstations. Each platform offers different performance features and connectivity options.

FEATURES AND BENEFITS

- ▶ **Specialized Horizon zero clients:** reliable, powerful desktops with a long service life for accessing VMware Horizon (PCoIP)
- ▶ **Low-priced, cost-effective solutions:** small non-recurring hardware investment, no subsequent costs and no hidden or ongoing costs
- ▶ **Easily updated clients:** they are future-proof because new functions can be used as and when needed
- ▶ **Upgradable clients:** they permit future migration to other VDI solutions using the existing IGEL zero client hardware
- ▶ **Automated, central remote administration:** quick and easy rollout, sharp reduction in management overhead, no local management required
- ▶ **Risk-free client testing:** request a test device at www.igel.com/eval

USE SCENARIOS

- ▶ **I22 Horizon:** Workstations for expanded task and office workers with expanded multimedia requirements, a large range of supported solutions (e.g., digital dictation or smart card authentication), dual view
- ▶ **I23 Horizon:** Workstations for office and knowledge workers with relatively high multimedia requirements, a large range of supported solutions (e.g., digital dictation or smart card authentication), good peripheral connectivity options (USB 3.0, 2 x DVI, and optionally, a serial port, WLAN or concealed USB port in the base)





IZ2/UD2-Series



PROFILE

So much more than you might think! Our affordable, space- and energy-saving hardware series sets new benchmarks for entry-level devices. These compact devices offer high-level performance, including for basic multimedia applications. Four USB ports and two digital monitor connections ensure a wide range of desktop usage options, including Dualview. For additional space savings, the IZ2/UD2 can be VESA mounted on the back of the monitor.

FEATURES AND BENEFITS

- ▶ **Slim Design**
The perfect companion for any workplace due to the small form factor and the latest design.
- ▶ **Excellent Price Performance**
Very affordable price as Zero Client as well as Universal Desktop Thin Client.
- ▶ **Dualview Support**
Direct connectivity for a second monitor via additional DVI port. No adapter or extra cable required.
- ▶ **VESA Mountable** (optional)
Direct connectivity for a second monitor via additional DVI port. No adapter or extra cable required.
- ▶ **No Moving Parts, e.g., Cooling Fans**
The absence of moving parts means the devices are almost noiseless and fail-safe with minimal heat generation.



DEVICES

Zero Clients

IZ2 HDX
IZ2 RFX
IZ2 Horizon

Universal Desktop

UD2 LX

Free evaluation:

www.igel.com/evaluation

COLOR

 black

PERIPHERAL INTERFACES



3 x USB 2.0

RJ45 Ethernet

DVI-D-Monitor

DVI-I-Monitor

Power

Front:
Line-out, Mic-in, 1 x USB 3.0

**CITRIX®
READY****Microsoft Partner**Gold OEM
Gold Application Development**vmware®
READY**END-USER
COMPUTING**IGEL IZ2/UD2 SPECIFICATIONS****SYSTEM**

Available Operating Systems	IGEL Linux v5 (LX)
Management	IGEL Universal Management Suite included
Form Factor	Standard Desktop
Processor	Intel Atom E3815 1,5 GHz (Single-Core)
Chipset	Intel Bay Trail SoC

MEMORY

RAM (DDR3L)	2 GB
Flash Memory	2 GB

GRAPHICS

Chipset	Intel HD Graphics
Video Memory	64–256 MB shared memory
Ports	1 x DVI-I*, 1 x DVI-D
Supported Resolutions	Dualview 1920 x 1200

NETWORK

Ethernet	10/100/1000 Base-T
----------	--------------------

AUDIO

Chipset	High Definition Audio
Ports	Front: 1 x line-out, 1 x mic-in
Speakers	1 x internal

PERIPHERAL INTERFACES

Serial	Optional, via USB-to-Serial adapter
Parallel	Optional, via USB-to-Parallel adapter
USB 2.0	3 x back
USB 3.0	1 x front
Kensington Lock	1 x back

DIMENSIONS

Device (DxWxH), upright	205 x 63 x 194 mm with foot, 200 x 48 x 182 mm without foot
Packaging (DxWxH), horizontal	275 x 95 x 260 mm
Weight (without foot)	0.9 kg

ENVIRONMENT

Cooling	Fanless convection
Operating Temperature	0° to 40° C (vertical) 0° to 35° C (horizontal, with rubber feet)
Operating Humidity	10%–80%, non-condensing

POWER

Input	Auto sensing 100~240VAC / 50~60 Hz
Power Supply	External
Power Consumption: Idle / Sleep Mode	5W / 1W

OPTIONS

VESA Mount	For mounting on the back of a monitor
Rubber Feet	For horizontal placement of the device
USB-to-Serial Adapter	For connecting peripherals that require a serial port
USB-to-Parallel Adapter	For connecting printers that require a parallel port
Shared WorkPlace	It allows user-dependent configuration based on setting profiles
Multimedia Codec Pack	Required for multimedia re-direction and full multimedia functionality

CERTIFICATES

CE, TÜV-GS, cULus, FCC Class B, ICES-003, RCM, VCCI, BSMI, CCC, EAC, FSB, WEEE, RoHS, China RoHS, Energy Star	For questions about product compliance or certification, please contact regulatory.compliance@igel.com .
---	--

*A DVI-VGA adapter is enclosed free of charge with each order. If you do not need it, please mention this when you place your order.



IZ3/UD3-Series



PROFILE

Our affordable, compact, versatile mid-range hardware platform. The IZ3/UD3 series is available with an optional integrated smartcard reader and a Connectivity Bar that offers an additional serial port for legacy peripherals and wireless network connectivity or an anti-theft USB port.

Get your **FREE** evaluation unit **NOW**



30

FEATURES AND BENEFITS

- ▶ **Affordable**
A low price and high energy efficiency guarantee low TCOs and a fast ROI.
- ▶ **Dualview support**
Dual DVI Port allows users to operate two digital monitors simultaneously. The DVI-I and DVI-D port allow one digital and one analog monitor to be connected via adapter.
- ▶ **Integrated smartcard reader** (optional)
Excellent for highly secure two factor authentication and fast login.
- ▶ **Connectivity Bar** (optional)
The unit can be enhanced with two additional serial ports and wireless network connectivity or an anti-theft USB port.
- ▶ **VESA mountable** (optional)
Mountable on the back of a monitor with the optional VESA bracket, ideal for space constraint environments.
- ▶ **No moving parts, e.g. cooling fans**
The absence of moving parts means the devices are almost noiseless and fail-safe with minimal heat generation.



DEVICES

Zero Clients

- IZ3 HDX
- IZ3 RFX
- IZ3 Horizon

Universal Desktop

- UD3 LX
- UD3 W7
- UD3 W7+

Free evaluation:

www.igel.com/evaluation

COLOR



PERIPHERAL INTERFACES

Connectivity Bar:
Optional connectivity for two serial ports and wireless networking or an anti-theft USB port.



- PS/2-Keyboard
- RJ45 Ethernet
- 1 x USB 2.0
- 2 x USB 3.0
- DVI-I / DVI-D
- Power
- Front: USB 2.0, Line-out and Mic-in



**CITRIX®
READY**



Microsoft Partner

Gold OEM
Gold Application Development



**vmware®
READY**

END-USER
COMPUTING

IGEL IZ3/UD3 SPECIFICATIONS

SYSTEM

Available Operating Systems	IGEL Linux v5 (LX) Microsoft Windows Embedded Standard 7 (W7 / W7+)
Management	IGEL Universal Management Suite included
Form Factor	Standard Desktop
Processor	VIA Eden X2 1 GHz (Dual-Core)
Chipset	VIA VX900

MEMORY

RAM (DDR3)	1 GB (LX), 2 GB (W7 / W7+)
Flash Memory (SATA SSD)	2 GB (LX), 4 GB (W7), 8 GB (W7+), optional 16 GB

GRAPHICS

Chipset	VIA ChromotionHD 2.0
Video Memory	128 – 256 MB shared memory
Ports	1 x DVI-I*, 1 x DVI-D
Supported Resolutions	Dualview 1920 x 1200

NETWORK

Ethernet	10/100/1000 Base-T
WLAN	Optional, via Connectivity Bar

AUDIO

Chipset	AC97 compatible
Ports	Front: 1 x line-out, 1 x mic-in
Speakers	1 x internal

PERIPHERAL INTERFACES

PS/2	1 x keyboard
Serial	2x optional, via Connectivity Bar
USB 2.0	1 x front, 1 x back; optional: anti-theft USB (via Connectivity Bar)
USB 3.0	2x back
Kensington Lock	1 x back

DIMENSIONS

Device (DxWxH), upright	210 x 69 x 207 mm with foot, 210 x 51 x 196 mm without foot
Packaging (DxWxH), horizontal	325 x 110 x 280 mm
Weight (without foot)	1.19 kg

ENVIRONMENT

Cooling	Fanless convection
Operating Temperature	0° to 35° C (vertical) 0° to 35° C (horizontal, with optional rubber feet)
Operating Humidity	10% – 80%, non-condensing

POWER

Input	Auto sensing 100~240VAC / 50~60Hz
Power Supply	External
Power Consumption: Idle / Sleep Mode	11W / 1W

OPTIONS

VESA Mount	For mounting on the back of a monitor
Rubber Feet	For horizontal placement of the device
Connectivity Bar	Option 1: 2 x serial port and anti-theft USB port Option 2: 2 x serial port and 802.11a/b/g/n WLAN
Built-in Smartcard Reader	For secure smartcard-based authentication
USB-to-Serial Adapter	For connecting peripherals that require a serial port
USB-to-Parallel Adapter	For connecting printers that require a parallel port
Shared WorkPlace	It allows user-dependent configuration based on setting profiles
Multimedia Codec Pack	Required for multimedia re-direction and full multimedia functionality

CERTIFICATES

CE, TÜV-GS, cULus, FCC Class B, ICES-003, RCM, VCCI, BSMI, CCC, BIS, UkrSEPRO, EAC, FSB, WEEE, RoHS, China RoHS, Energy Star	For questions about product compliance or certification, please contact regulatory.compliance@igel.com .
--	--

*A DVI-VGA adapter is enclosed free of charge with each order. If you do not need it, please mention this when you place your order.



UD5-Series



PROFILE

A powerful and expandable hardware platform. Its high-speed processor and graphics can support demanding applications or many applications running simultaneously. The UD5 Series supports excellent connectivity thanks to a range of interfaces, including a PCIe slot. Optionally, you can add an integrated smartcard reader and a connectivity bar with an additional parallel port and wireless network connectivity or an anti-theft USB port.

32

FEATURES AND BENEFITS

- ▶ **Best Performance**
Strong processor and graphics capability for applications like multi-media and video conferencing.
- ▶ **Free PCIe slot**
Customize the UD5 to your needs with the addition of internal peripherals such as fibre optic network cards.
- ▶ **Dualview support**
Parallel use of two digital monitors with a DVI and a DisplayPort.
- ▶ **Integrated smartcard reader (optional)**
Excellent for highly secure two factor authentication and fast login.
- ▶ **Connectivity bar (optional)**
Expand your device with a parallel port and WLAN or an anti-theft USB port.
- ▶ **No moving parts, e.g. cooling fans**
The absence of moving parts means the devices are almost noiseless and fail-safe with minimal heat generation.



DEVICES

UD5 LX
UD5 W7
UD5 W7+

COLOR

 black

OPTIONS

Connectivity bar:
Optional connectivity for parallel I/O and wireless networking or an anti-theft USB port.



PERIPHERAL INTERFACES



- 2 x USB 3.0
- 2 x USB 2.0
- RJ45 Ethernet
- Stereo-out / Mic-in
- PS/2 Keyboard
- PCIe Slot
- DVI-I
- 2 x Serial Port
- DisplayPort
- Power

Front: 2 x USB 2.0

Free evaluation:
www.igel.com/evaluation

**CITRIX®
READY**

Microsoft Partner

Gold OEM
Gold Application Development

**vmware®
READY**

**END-USER
COMPUTING**

IGEL UD5 SPECIFICATIONS

SYSTEM

Available Operating Systems	IGEL Linux v5 (LX) Microsoft Windows Embedded Standard 7 (W7 / W7+)
Management	IGEL Universal Management Suite included
Form Factor	Standard Desktop
Processor	Intel Celeron J1800 2.41 – 2.58 GHz (Dual-Core)
Chipset	Intel Bay Trail SoC
PCI-slot	1 x (low profile)

MEMORY

RAM (DDR3L)	2 GB (LX / W7 / W7+)
Flash Memory (SATA SSD)	2 GB (LX), 4 GB (W7), 8 GB (W7+), larger SSD modules on request

GRAPHICS

Chipset	Intel HD Graphics
Video Memory	64 – 512 MB Shared Memory
Ports (Supported Resolutions)	1x DisplayPort 1.1a (max. 2560x1600) 1x DVI-I* (max. 1920x1200)

NETWORK

Ethernet	10/100/1000 Base-T
WLAN	Optional, via connectivity bar

AUDIO

Chipset	Realtek High Definition Audio (ALC662)
Ports	1 x line-out, 1 x mic-in, 1 x DisplayPort (Intel HD Audio)
Speakers	1 x internal

PERIPHERAL INTERFACES

PS/2	1 x keyboard
Serial	2 x
Parallel	1 x optional, via connectivity bar or USB-to-Parallel adapter
USB 2.0	2 x front, 2 x back; optional: anti-theft USB (via connectivity bar)
USB 3.0	2 x back
Kensington Lock	1 x back

DIMENSIONS

Device (D x W x H), upright	232 x 99 x 242 mm with foot, 232 x 74 x 225 mm without foot
Packaging (D x W x H), horizontal	297 x 366 x 125 mm
Weight (without foot)	1.47 kg

ENVIRONMENT

Cooling	Fanless convection
Operating Temperature	0° to 40°C (vertical) 0° to 40°C (horizontal, with rubber feet)
Operating Humidity	20% – 80%, non-condensing

POWER

Input	Auto sensing 100~240VAC / 50~60Hz
Power Supply	External
Power Consumption: Idle / Sleep Mode	8W / < 1W

OPTIONS

VESA Mount	For mounting on the back of a monitor
Rubber Feet	For horizontal placement of the device
Connectivity Bar	Option 1: parallel port and anti-theft USB port Option 2: 1x parallel and 1x 802.11 a/b/g/n 2,4 GHz, 5 GHz WLAN
Built-in Smartcard Reader	For secure smartcard-based authentication
USB-to-Serial Adapter	For connecting peripherals that require a serial port
USB-to-Parallel Adapter	For connecting printers that require a parallel port
DisplayPort to DVI Adapter	For connecting a monitor that requires a DVI port
Shared WorkPlace	It allows user-dependent configuration based on setting profiles
Multimedia Codec Pack (UD Linux)	Required for multimedia re-direction and full multimedia functionality

CERTIFICATES

CE, TÜV-GS, cULus, FCC Class B, ICES-003, RCM, VCCI, BSMI, CCC, EAC, FSB, WEEE, RoHS, China RoHS, Energy Star	For questions about product compliance or certification, please contact regulatory.compliance@igel.com .
---	--

*A DVI-VGA adapter is enclosed free of charge with each order. If you do not need it, please mention this when you place your order.



UD6-Series



PROFILE

Maximum performance for maximum requirements! Our most powerful hardware series sets a new standard in thin client computing. Because of its fast quad-core processor and flexible expansion capability, the UD6 is the device of choice for the most demanding use scenarios. Video playback in Full HD, computer-aided design (CAD) or 3D applications – none pose the slightest problem for the new high-end model. Outfitted with multiple interfaces, including USB 3.0 and PCIe slot, the UD6 series offers you everything on your wish list.

FEATURES AND BENEFITS

- ▶ **Maximum Performance**
The highest processor and graphics performance for the most demanding tasks, e.g., Flash multimedia, CAD applications, video playback in Full HD.
- ▶ **Free PCIe slot**
Customize the UD6 for individual needs via PCIe expansion cards, e.g., fiber optic network cards.
- ▶ **Dualview support**
Parallel use of two digital monitors with a DVI and a DisplayPort.
- ▶ **Integrated smartcard reader (optional)**
Excellent for highly secure two factor authentication and fast login.
- ▶ **Connectivity bar (optional)**
Expand your device with a parallel port and WLAN or an anti-theft USB port.
- ▶ **No moving parts, e.g. cooling fans**
Because it contains no moving parts, the UD6 makes almost no noise, is nearly failsafe and produces minimal heat – even with high-performance usage



34

DEVICES

UD6 LX
UD6 W7
UD6 W7+

Free evaluation:
www.igel.com/evaluation

COLOR

 black

OPTIONS

Connectivity bar:
Optional connectivity for parallel I/O and wireless networking or an anti-theft USB port.



PERIPHERAL INTERFACES



- 2 x USB 3.0
- 2 x USB 2.0
- RJ45 Ethernet
- Stereo-out / Mic-in
- PS/2 Keyboard
- PCIe Slot
- DVI-I
- 2 x Serial Port
- DisplayPort
- Power

Front: 2 x USB 2.0

**CITRIX®
READY**

Microsoft Partner

Gold OEM
Gold Application Development

**vmware®
READY**

**END-USER
COMPUTING**

IGEL UD6 SPECIFICATIONS

SYSTEM

Available Operating Systems	IGEL Linux v5 (LX) Microsoft Windows Embedded Standard 7 (W7 / W7+)
Management	IGEL Universal Management Suite included
Form Factor	Standard Desktop
Processor	Intel Celeron J1900 1,99 - 2,42 GHz (Quad-Core)
Chipset	Intel Bay Trail SoC
PCI-slot	1 x (low profile)

MEMORY

RAM (DDR3L)	2 GB (LX / W7 / W7+)
Flash Memory (SATA SSD)	2 GB (LX), 4 GB (W7), 8 GB (W7+), larger SSD modules on request

GRAPHICS

Chipset	Intel HD Graphics
Video Memory	64–512 MB Shared Memory
Ports (Supported Resolutions)	1x DisplayPort 1.1a (max. 2560x1600) 1x DVI-I* (max. 1920x1200)

NETWORK

Ethernet	10/100/1000 Base-T
WLAN	Optional, via connectivity bar

AUDIO

Chipset	Realtek High Definition Audio (ALC662)
Ports	1 x line-out, 1 x mic-in, 1 x DisplayPort (Intel HD Audio)
Speakers	1 x internal

PERIPHERAL INTERFACES

PS/2	1 x keyboard
Serial	2 x
Parallel	1 x optional, via connectivity bar or USB-to-Parallel adapter
USB 2.0	2 x front, 2 x back; optional: anti-theft USB (via connectivity bar)
USB 3.0	2 x back
Kensington Lock	1 x back

DIMENSIONS

Device (D x W x H), upright	232 x 99 x 242 mm with foot, 232 x 74 x 225 mm without foot
Packaging (D x W x H), horizontal	297 x 366 x 125 mm
Weight (without foot)	1.47 kg

ENVIRONMENT

Cooling	Fanless convection
Operating Temperature	0° to 40°C (vertical) 0° to 40°C (horizontal, with rubber feet)
Operating Humidity	20%–80%, non-condensing

POWER

Input	Auto sensing 100~240VAC / 50~60Hz
Power Supply	External
Power Consumption: Idle / Sleep Mode	8W / < 1W

OPTIONS

VESA Mount	For mounting on the back of a monitor
Rubber Feet	For horizontal placement of the device
Connectivity Bar	Option 1: parallel port and anti-theft USB port Option 2: 1x parallel and 1x 802.11 a/b/g/n 2,4 GHz, 5 GHz WLAN
Built-in Smartcard Reader	For secure smartcard-based authentication
USB-to-Serial Adapter	For connecting peripherals that require a serial port
USB-to-Parallel Adapter	For connecting printers that require a parallel port
DisplayPort to DVI Adapter	For connecting a monitor that requires a DVI port
Shared WorkPlace	It allows user-dependent configuration based on setting profiles
Multimedia Codec Pack (UD Linux)	Required for multimedia re-direction and full multimedia functionality

CERTIFICATES

CE, TÜV-GS, cULus, FCC Class B, ICES-003, RCM, VCCI, BSMI, CCC, EAC, FSB, WEEE, RoHS, China RoHS, Energy Star	For questions about product compliance or certification, please contact regulatory.compliance@igel.com .
---	--

*A DVI-VGA adapter is enclosed free of charge with each order. If you do not need it, please mention this when you place your order.



UD9-Series



PROFILE

Integrated into a 21.5" widescreen, the UD9 series support a wide range of applications and provides numerous interfaces and integrated features such as touchscreen, WLAN and a smartcard reader.

FEATURES AND BENEFITS

- ▶ **Wide 21.5" LCD monitor (55 cm)**
Increased user comfort and productivity.
- ▶ **Thin client integrated into a modern monitor**
Small footprint and attractive design.
- ▶ **Touchscreen display (optional)**
Use without keyboard and mouse, e.g., as a kiosk or PoS.
- ▶ **Integrated WLAN module (optional)**
Use of the latest wireless standard enables optimal connectivity even without wired network infrastructure.
- ▶ **Integrated smartcard reader (optional)**
Excellent for highly secure two-factor authentication, shared desktops or roaming users.

36



DEVICES

UD9 LX
UD9 LX Touch

UD9 W7
UD9 W7 Touch

UD9 W7+
UD9 W7+ Touch



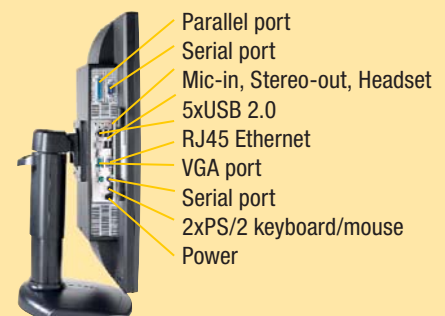
Touchscreen



Display rotating by 90°



Smartcard reader



Connectivity options

CITRIX®
READY

Microsoft Partner

Gold OEM
Gold Application Development

vmware®
READY
**END-USER
COMPUTING**

IGEL UD9 SPECIFICATIONS

SYSTEM

Available Operating Systems	IGEL Linux v5 (LX) Microsoft Windows Embedded Standard 7 (W7 / W7+)
Management	IGEL Universal Management Suite included
Form Factor	Integrated
Processor	Intel Atom N270 1.6 GHz (Single-Core)
Chipset	Intel 945 GSE

MEMORY

RAM	1 GB (LX), 2 GB (W7 / W7+)
Flash Memory	2 GB (LX), 4 GB (W7), 8 GB (W7+)

GRAPHICS

Chipset	Intel GMA 950
Video Memory	32–128 MB shared memory
Ports	1 x VGA-out
Supported Resolutions	Dualview 1920 x 1080

NETWORK

Ethernet	10/100/1000 Base-T
WLAN	Optional, 802.11 b/g/n

AUDIO

Chipset	HD Audio compatible
Ports	1 x line-out, 1 x line-in, 1 x mic-in
Speakers	2x internal

PERIPHERAL INTERFACES

PS/2	2x
Serial	2x
Parallel	1x
USB 2.0	5x
Kensington Lock	1x back

DIMENSIONS

Device (DxWxH), upright	514 x 264 x 327 mm with foot, 514 x 330 x 100 mm without foot
Packaging (DxWxH), horizontal	650 x 335 x 465 mm
Weight (incl. foot)	8.26 kg (UD9), 9.4 kg (UD9 Touch)

ENVIRONMENT

Cooling	Fanless convection
Operating Temperature	0° to 40°C
Operating Humidity	20% – 80%, non-condensing

POWER

Input	Auto sensing 100~240VAC / 50~60Hz
Power Supply	External
Power Consumption: Idle / Sleep Mode	38W / 2W

OPTIONS

Integrated Smartcard Reader	For secure smartcard-based authentication
Integrated WLAN Module	For environments with no physical network infrastructure
Touchscreen Display	For public facing or space-constraint environments
USB-to-Serial Adapter	For connecting peripherals that require a serial port
USB-to-Parallel Adapter	For connecting printers that require a parallel port
Shared WorkPlace	It allows user-dependent configuration based on setting profiles
Multimedia Codec Pack (UD Linux)	Required for multimedia re-direction and full multimedia functionality

CERTIFICATES

CE, TÜV-GS, cULus, FCC Class B, ICES-003, CCC, China RoHS For questions about product compliance or certification, please contact regulatory.compliance@igel.com.



UD10-Series



PROFILE

Integrated into a 23,6" widescreen, the UD10 series support a wide range of applications and provides numerous interfaces, including a Smartcard-Reader and optional features such as touchscreen and WLAN. The UD10-Series provides a secure and efficient access to all major central computing infrastructures.

FEATURES AND BENEFITS

- ▶ **Wide 23,6" LED-backlit LCD display (60 cm)**
Increased user comfort and productivity.
- ▶ **Thin client integrated into a modern monitor**
Small footprint and attractive design.
- ▶ **Infrared touchscreen display (optional)**
Use without keyboard and mouse, e.g., as a kiosk or PoS, operate even with gloves.
- ▶ **Integrated WLAN module (optional)**
Use of the latest wireless standard enables optimal connectivity even without wired network infrastructure.
- ▶ **Integrated smartcard reader**
Excellent for highly secure two-factor authentication, shared desktops or roaming users.

38



Get your
FREE
evaluation unit
NOW

DEVICES

UD10 LX
UD10 LX Touch

UD10 W7
UD10 W7 Touch

UD10 W7+
UD10 W7+ Touch



Touchscreen

Display rotating by 90°

Smartcard reader

Connectivity options

- Power
- Serial ports
- Parallel port
- DisplayPort
- RJ45 Ethernet
- 2x USB 2.0
- 2x USB 3.0
- 2xPS/2 keyboard/mouse
- Mic-in, Stereo-out, Headset

**CITRIX®
READY**

Microsoft Partner

Gold OEM
Gold Application Development

**vmware®
READY**
END-USER
COMPUTING

IGEL UD10 SPECIFICATIONS

SYSTEM

Available Operating Systems	IGEL Linux v5 (LX) Microsoft Windows Embedded Standard 7 (W7 / W7+)
Management	IGEL Universal Management Suite included
Form Factor	Integrated
Processor	VIA Eden X2 1 GHz (Dual-Core)
Chipset	VIA VX900

MEMORY

RAM (DDR3)	1 GB (LX), 2 GB (W7 / W7+)
Flash Memory	2 GB (LX), 4 GB (W7), 8 GB (W7+), optional 16 GB

GRAPHICS

Chipset	VIA ChromotionHD 2.0
Video Memory	128–256 MB Shared Memory
Ports	1x DisplayPort
Supported Resolutions	Dualview item (FullHD): 1920 x 1080, 1x DisplayPort: 2560 x 1600

NETWORK

Ethernet	10/100/1000 Base-T
WLAN	Optional, 802.11 b/g/n

AUDIO

Chipset	AC97-compatible
Ports	1x Line-out, 1x Line-in, 1x Mic-in
Speakers	2x intern

PERIPHERAL INTERFACES

PS/2	2x
Serial	2x
Parallel	1x
USB 2.0	3x
USB 3.0	2x
Integrated smartcard reader	For secure smartcard-based authentication (PC/SC)

DIMENSIONS

Device (D x W x H), upright	564 x 370 x 178 with foot, 564 x 370 x 84 mm without foot
Packaging (D x W x H), horizontal	730 x 490 x 310 mm
Weight (incl. foot)	10.42 kg (UD10), 11.22 kg (UD10 Touch)

ENVIRONMENT

Cooling	Fanless convection
Operating Temperature	0° to 40°C
Operating Humidity	20% – 80%, non-condensing

POWER

Input	Auto sensing 100~240VAC / 50~60 Hz
Power Supply	External
Power Consumption: Idle / Sleep Mode	31 W / <1 W

OPTIONS

Integrated WLAN Module	For environments with no physical network infrastructure
Touchscreen Display	For public facing or space-constraint environments
USB-to-Serial Adapter	For connecting peripherals that require a serial port
USB-to-Parallel Adapter	For connecting printers that require a parallel port
DisplayPort-DVI adapter	To connect a monitor with a DVI connector using DisplayPort
Shared WorkPlace	It allows user-dependent configuration based on setting profiles
Multimedia Codec Pack (UD Linux)	Required for multimedia re-direction and full multimedia functionality

CERTIFICATES

CE, TÜV-GS, cULus, FCC Class B, ICES-003, RCM, VCCI, BSMI, CCC, WEEE, RoHS, China RoHS, Energy Star	For questions about product compliance or certification, please contact regulatory.compliance@igel.com .
---	--

OPERATING SYSTEMS

The IGEL Universal Desktop series are available with two different operating systems.



IGEL LINUX

The most cost effective operating system with the best performance. IGEL Linux comes with a broad set of local protocol clients and tools giving the user the possibility to access the needed application with the best protocol. IGEL's embedded Linux offers maximum stability and security. Having a strong in house development IGEL customers can be sure to get always the newest updates and features integrated in a rock-solid firmware.



MICROSOFT WINDOWS EMBEDDED STANDARD 7

Windows Embedded Standard 7 comes with an Aero interface and RemoteFX support. The Microsoft RemoteFX protocol allows the redirection of USB devices and the seamless presentation of graphics-intensive content. In addition, the original Internet Explorer, a native RDP client, .NET support and full driver support for peripherals are also included.

The IGEL Universal Desktop series with Windows Embedded Standard 7 is available in two versions: With a flash memory of 4 GB (W7) or a flash memory of 8 GB (W7 +).



The Portfolio: IGEL Technology Thin Client Software & Hardware. Many functions – One device!

SOFTWARE OVERVIEW



OPERATING SYSTEM	IGEL LINUX (LX)				W7 / W7+
	IZ HDX	IZ RFX	IZ HORIZON	UD	UD
MANAGEMENT					
Centralized and standardized client management (Unified Management)	x	x	x	x	x
Full remote management	x	x	x	x	x
Central device configuration (profile-based)	x	x	x	x	x
Template Profiles (customizable profiles, available from UMS version 4.08.100)	x	x	x	x	x
Master Profiles (available from UMS version 4.09.100)	x	x	x	x	x
User-friendly device organization by means of IGEL Views	x ¹	x ¹	x ¹	x ¹	x ¹
Remote power management	x	x	x	x	x
Scheduled client administration (jobs)	x	x	x	x	x
Firmware management (Universal Firmware Update)	x	x	x	x	x
Rights distribution for group-based administration	x ¹	x ¹	x ¹	x ¹	x ¹
AD/LDAP integration	x ¹	x ¹	x ¹	x ¹	x ¹
Standardized firmware extension (UCB), optional				x	x
Scalable high availability (HA), optional	x ¹	x ¹	x ¹	x ¹	x ¹
Secure mirroring (SSL), including rights management and audit compliance	x	x	x	x	x (available from version 3.09.100)
Shared WorkPlace support for multi-user scenarios (optional)	x	x	x	x	x
Helpdesk Report Generator	x ¹	x ¹	x ¹	x ¹	x ¹
File transfer TC <-> UMS	x ¹	x ¹	x ¹	x ¹	x ¹
Audit-compliant logging (events, actions, VNC)	x	x	x	x	x ⁴
Administrative tasks (e.g., time-controlled creation, backups and views)	x ¹	x ¹	x ¹	x ¹	x ¹
Remote server access (Web Start)	x ¹	x ¹	x ¹	x ¹	x ¹
NETWORK STANDARD: TCP/IP, PXE, WAKE-ON-LAN, DNS, DHCP, PPTP, PPPoE (DSL VIA ONBOARD LAN)					
SNMP					x
L2TP					x
Third Party VPN: NCP / Genocard / OpenVPN	x / x ⁵ / x	x / x ⁶ / x	x / x ³ / x	x / x ⁶ / x	x / - / x
COMMUNICATION: Local Browser (LX: Firefox; W7/W7+: Internet Explorer)					
Citrix XenDesktop / XenApp / HDX / ICA	x			x	x
Microsoft RemoteApp / RDS / RDP / RemoteFX / RD Gateway		x		x	x
VMware Horizon Client (PCoIP and RDP)			x	x	x
Ericom PowerTerm Terminal Emulation (activation required)				x	x
Native IBM 5250 Emulation				x	
2X RAS / Nimboxx VERDE VDI / Cendio ThinLinc / Systancia AppliDis Fusion 4				x	
Leostream Connection Broker / NoMaschine NX / Red Hat Enterprise Virtualization / Dell vWorkspace				x	x
PRINT SERVICES: LPD/IPP (LX) AND SHARED PRINTER (W7/W7+)					
Cortado ThinPrint / CSP Convert4Print / Common UNIX Printing System	x	x	x	x	x
ADDITIONAL SOFTWARE FEATURES					
Java Runtime Environment	x	x	x	x	x
PDF Reader / Voice over IP (Ekiga)				x	x
Media Player, including multimedia redirection	x ²	x ²	x ²	x ⁷	x
USB redirection and management (FabulaTech / DriveLock, license required)	x	x	x	x	x / x ³
Smartcard / Touchscreen / Signature pad / Digital dictation support	x	x	x	x	x / - / - / x ²
Unified Communication (Microsoft Skype for Business (Lync) / Cisco VXi)	x / -		x / -	x / -	x ³ / x ^{3,6}
Imprivata OneSign Embedded / Evidian SSO Enterprise	x / -		x / -	x	x ³ / -
IGEL FEATURES					
USB rights management and access control	x	x	x	x	x
Fail-safe firmware update	x	x	x	x	x
Appliance mode for selected sessions	x	x	x	x	
CI-compliant desktop branding	x	x	x	x	
Café Wireless (desktop Wi-Fi manager and Wi-Fi UMS management)	x	x	x	x	
Power Management				x	
AVAILABLE PRODUCTS					
IZ2/UD2 series	IZ2 HDX	IZ2 RFX	IZ2 Horizon	UD2 LX	
IZ3/UD3 series	IZ3 HDX	IZ3 RFX	IZ3 Horizon	UD3 LX	UD3 W7 / UD3 W7+
UD5 series				UD5 LX	UD5 W7 / UD5 W7+
UD6 series				UD6 LX	UD6 W7 / UD6 W7+
UD9 series				UD9 LX	UD9 W7 / UD9 W7+
UD10 series				UD9 LX Touch UD10 LX UD10 LX Touch	UD9 W7 Touch / UD9 W7+ Touch UD10 W7 / UD10 W7+ UD10 W7 Touch / UD10 W7+ Touch

¹ OS independent, ² Not as a session, ³ Not pre-installed, ⁴ WES, no VNC logging, ⁵ Additional hardware required, ⁶ W7+ only, ⁷ Redirection: Codec Pack required

IGEL SOFTWARE SUBSCRIPTION

Use of our Unified Management Agent (UMA, see page 13) and IGEL Management Interface (IMI, see page 18) software products requires paid licenses. Both solutions are available via the annual license described below.

SERVICES PROVIDED

A valid subscription entitles the holder to:

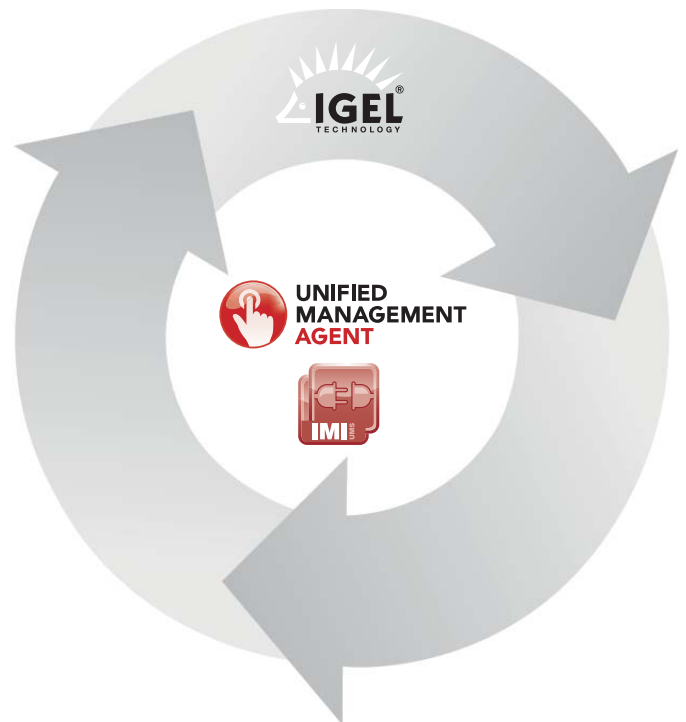
- ▶ One-off activation of the subscription (start of the subscription term) via the IGEL Subscription Portal (activation.igel.com)
- ▶ Use of latest version functionality and use of previous supported versions
- ▶ Download the latest version from the Internet (www.myigel.biz), including free download and installation
- ▶ Free access to the IGEL support help desk in the event of problems

TERM AND VALIDITY

- ▶ The subscription term begins with one-off activation of the activation key on the IGEL Subscription Portal and then runs for a period of 12 months.
- ▶ The subscription ends when the term expires, regardless of how often the product is used. When the subscription expires, the customer can still use the product in its current version. All versions that pre-date the end of the subscription can also be used. Versions published after the subscription expires cannot be used without a valid subscription.
- ▶ In order to extend the subscription, the customer must acquire a subscription extension within the valid subscription period. The customer activates the subscription extension on the IGEL Subscription Portal, after which the subscription will be valid for a further 12 months.
- ▶ The subscription extension can be loaded into the system before the existing subscription expires. The subscription extension term commences without interruption when the existing subscription expires.
- ▶ It is not possible to acquire a subscription extension after the valid subscription has expired. The subscription must then be purchased again as a new product.
- ▶ The subscription licenses can be ordered through our partners (see www.igel.com/partner).

MANAGEMENT OF THE SUBSCRIPTION

- ▶ The subscription is managed centrally for all devices via the UMS 5 management software.
- ▶ Further information is available upon request.



IGEL UNIVERSAL DESKTOPS – THE GREEN ALTERNATIVE

For organizations looking to reduce their carbon footprint, electronic waste and energy bills, thin clients have strong credentials when compared with PCs.

The prestigious Fraunhofer Institute in Germany found that, even when the additional server electricity and datacenter air conditioning is factored in, thin clients can cut CO₂ emissions by up to 77% compared with an average desktop PC when using 64 bit Windows Terminal Services (Citrix) for server-based desktop hosting. These energy savings can offer a 6-year or less payback on electrical energy costs alone (US Department of Energy commercial electricity costs per kWh 2009 in the NE United States).

In addition to reducing CO₂ and energy, thin clients generate 66% less electrical waste. IGEL was one of the first thin client vendors to ensure all our devices were WEEE and RoHS compliant. Every device bought in Europe can be recycled free of charge at end of life upon customer request.

COMPARISON OF POWER CONSUMPTION BETWEEN THIN CLIENTS AND PCS

Power consumption and potential savings with:	Thin client (autarkic): Access to Host or Internet (Cloud Services)	Thin client to access a Windows environment with 64 Bit Server OS without cooling	Thin client to access a Windows environment with 64 Bit Server OS with cooling	PC (Fat Client) with locally installed Windows environment and Terminal emulation
Power consumption ¹	4.1W	6.2W	7.7W	33.4W
x per day (24 h incl. soft-off):	98.4W	148.8W	184.8W	801.6W
x per year (365 years) ² in kWh:	35.9 kW	53.3 kW	67.5 kW	293.6 kW
Power consumption³ per year for				
· 100 workstations	718 €	1,086 €	1,349 €	5,852 €
· 1,000 workstations	7,183 €	10,862 €	13,490 €	58,517 €
Amount of CO₂ emissions prevented per year⁴ with				
· 1,000 workstations	145 t	134 t	127 t	–
Percentage reduction in power, power cost and CO₂ emissions:	88%	81%	77%	–

1 Average effective power over 24 hours including soft-off (source: Fraunhofer UMSICHT – Institute for Environmental, Safety and Energy Technology / IGEL Technology: Environmental Comparison of PC and Thin client Desktop Equipment 2011, <http://it.umsicht.fraunhofer.de/TC2011>); power consumption given for thin clients applies to the model IGEL UD3 LX: 19.1 W (operation) and 1.9 W (sleep)

2 220 working days, plus 145 days at soft-off

3 Based on an electricity rate of €0.20 /kWh

4 Production of one kWh of the German power mix releases 576 g CO₂ (source: The German Federal Environment Agency, September 2013)



DE**GERMANY (HQ)**

IGEL Technology GmbH
 Hanna-Kunath-Str. 31
 D-28199 Bremen | Germany
 Phone +49 421 52094-0
 info@igel.com | www.igel.de

AU**AUSTRALIA**

IGEL Technology Pty. Ltd.
 Suite 18 | Level 22
 101 Grafton Street
 Bondi Junction, NSW, 2022
 Australia
 Phone +61 432103599
 info@igel.com | www.igel.com

AT**AUSTRIA**

IGEL Technology
 Branch Office Austria
 Wienerbergstraße 11/A12
 Vienna Twin Towers
 1100 Wien | Austria
 Phone +43 1 99 460-6238
 info@igel.com | www.igel.com

BE**BELGIUM**

IGEL Technology BVBA
 Researchpark Haasrode 1820
 Interleuvenlaan 62
 3001 Leuven (Heverlee)
 Phone +32 16 3947 57
 info@igel.com | www.igel.com

CH**SWITZERLAND**

IGEL Technology GmbH
 Branch Office Switzerland
 World Trade Center
 Leutschenbachstraße 95
 8050 Zürich
 Phone +41 44 308 37 41
 info@igel.com | www.igel.com

CN**BEIJING**

IGEL Technology
 Care of: Melchers Beijing Ltd.
 Beijing Tower | Room 503-504
 10 Chang'an Ave. (East)
 Peking 100006 | China
 Phone +86 10 65257775
 info@igel.com | www.igel.com/cn

SHANGHAI

IGEL Technology
 Care of: Melchers (Shanghai) Ltd.
 13 Floor | East Ocean Centre
 588 Yanan Road (East)
 Shanghai 200001 | China
 Phone +86 21 6352 8848
 info@igel.com | www.igel.com/cn

FR**FRANCE**

IGEL Technology
 57, Esplanade du Général de Gaulle
 92081 PARIS LA DEFENSE CEDEX
 Phone +33 1 4696 56 89
 france@igel.com | www.igel.fr

NL**THE NETHERLANDS**

IGEL Technology
 Orteliuslaan 850
 3528 BB Utrecht
 Phone +31 30 767 1055
 benelux@igel.com | www.igel.nl

SE**SWEDEN**

IGEL Technology GmbH
 Branch Office Sweden
 Sommarhemsvägen 1
 46260 Vänersborg
 Phone +46 708 57 04 22
 info@igel.com | www.igel.com

UK**UNITED KINGDOM**

IGEL Technology Ltd
 Merlin House, Brunel Road
 Theale | Reading | Berkshire
 RG7 4AB | United Kingdom
 Phone +44 118 340 3400
 info@igel.com | www.igel.co.uk

US**UNITED STATES**

IGEL America Sales Corporation
 616 Corporate Way, Suite 2-3263
 Valley Cottage | NY 10989 | USA
 Phone +1 845 589 5900
 info@igel.com | www.igel.com

IGEL America Services, LLC
 2106 Florence Avenue
 Cincinnati | OH 45206 | USA
 Phone +1 954 739 9990
 info@igelamerica.com | www.igel.com

info@igel.com | www.igel.com

All IGEL clients come with a standard two-year warranty (starting from the date of delivery). Take advantage of our free online registration and, by doing so, automatically extend the hardware warranty period for your IGEL thin clients, as per our original end-customer warranty agreement. By completing this one-time registration, you will also obtain extended warranty periods for all future IGEL devices. This offer of warranty extension does not apply to optional accessories. IGEL is a registered trademark of IGEL Technology GmbH. All hardware and software names are registered trademarks of the respective manufacturers. Errors and omissions excepted.

©01/2016 IGEL Technology 100-EN-1-31

