



Improve your paper process—
with speed and control

HP ScanJet Enterprise Flow 7000 s3



Large volumes at
blazing speeds



Advanced workflows to help
increase efficiency



Professional-grade
scanning—simplified

Large volumes at blazing speeds



Powerful batch-scanning performance customized for the high-volume needs of your business. Confidently capture stacks of mixed paper sizes and weights. Built-in software—including Kofax VRS 5.1 Professional—helps you save time and simplify complex jobs. Create digital copies that match expectations with rich, accurate images. Scan speeds up to 75 ppm/150 ipm¹ help keep projects moving. Seamlessly manage workflows with a scanner recommended for 7,500 pages per day.



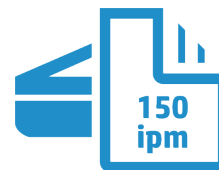
Rely on this scanner time after time

Count on this workhorse to deliver again and again—recommended for 7,500 pages per day.



Modern design perfect for the desktop

This compact, desktop scanner saves space while delivering uninterrupted paper handling for scan jobs of all kinds.



Scan stacks of mixed media without worry

Capture entire documents with one-pass, duplex scanning up to 150 ipm¹—even stacks of mixed media—with HP EveryPage featuring ultrasonic multi-feed detection.²

Advanced workflows to help increase efficiency

Image capture

Easy to control, with scans in one touch

Save time and improve performance with customized workflows. Create one-button scan settings for recurring tasks, and make selections using the LCD control panel.



80^{page}
ADF

Quickly scan stacks of paper

Load up to 80 pages into the ADF for fast, unattended scanning.

75^{ppm}
150^{ipm}

Scan both sides in one pass

Capture entire documents with one-pass duplex scanning at speeds of up to 150 ipm.¹

300
dpi

Look sharp

Count on accurate, enhanced images and text with every scan.

Processing

Automatically process documents

Detect bar codes for use in file naming, batch separation, and metadata; set misfeed detection; automatically delete blank pages; separate large scan jobs into documents by number of pages, barcode, blank pages, and document separator pages; apply digital stamps; merge pages in duplex scanning.



Capture a wide range of document types

Handle paper sizes up to 122 inches (309.9 cm) and paper weights up to 110 lb (413 g/m²). Scan A3-size documents without a carrier sheet.

Delivery

Scan into popular applications

Save time and simplify complex scan jobs with HP Smart Document Scan Software. Scan images directly into applications without having to open another program, with included and full-featured TWAIN and ISIS[®]. Get direct access to Kofax VRS 5.1 Professional.



Manage

Remote monitoring for smarter scanning

Identify new devices and gain insight into scanning with HP Web Jetadmin remote discovery and monitoring.³



Professional-grade scanning—simplified



Easily manage paper documents

Produce scans at up to 75 ppm/150 ipm with two-sided scanning that captures both sides at once.¹ The 80-page ADF and a recommended daily duty cycle of 7,500 pages make scanning easy and fast.



Professional-grade scanning

Perform complex tasks—such as blank page removal, image cleanup, barcode recognition, batch scanning (including metadata and indexing features), and even sending to multiple destinations—all at the touch of a button.

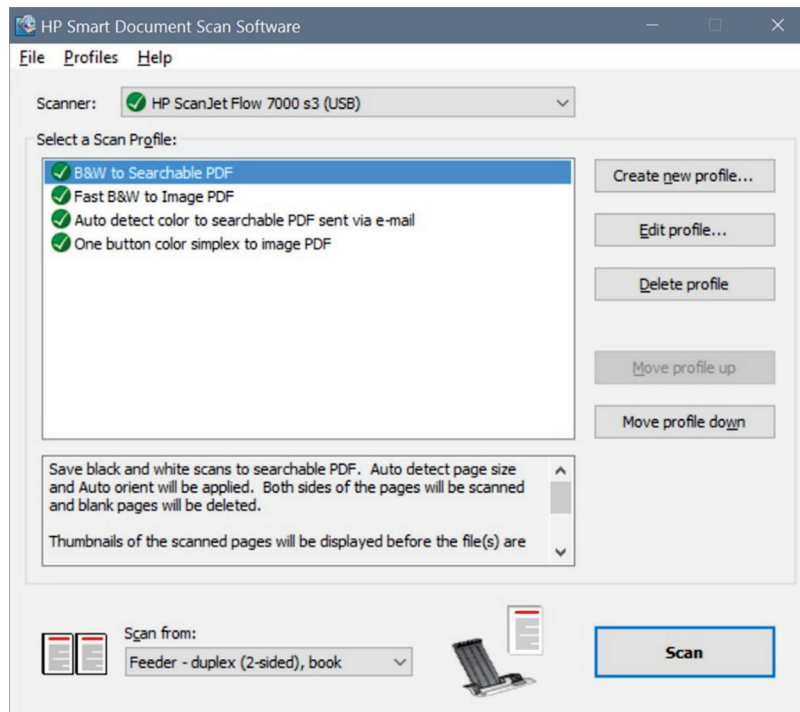
HP Smart Document Scan Software (SDSS)

Designed for office workers, this easy-to-use interface lets you quickly set up and review selected settings, then preview and modify your images before finalizing the file.

- **Save time with a simple interface.** Create profiles for the types of scan jobs you perform most often, with settings such as paper size, resolution, file format, destination(s), and more. You can quickly launch the profiles from your computer, or assign them to the front panel on your scanner—so you can execute complex jobs at the touch of a button. Conveniently perform ad-hoc scanning for one-time jobs.
- **Help increase productivity with automation.** Configure scan settings to get the results you want: automatically crop, orient, detect color, separate batches, straighten, delete blank pages, and clean up images. Preview the scan and modify as necessary, then route to single or multiple destinations, including folder, email, and integrated cloud repositories.
- **Add value by customizing results.** Save files just as you want them—compress large files for more efficient storage, automatically adjust brightness, contrast and exposure, enhance edges, and remove color, background shading, punch holes, and irregularities to get the smallest file size and clear, readable scans.

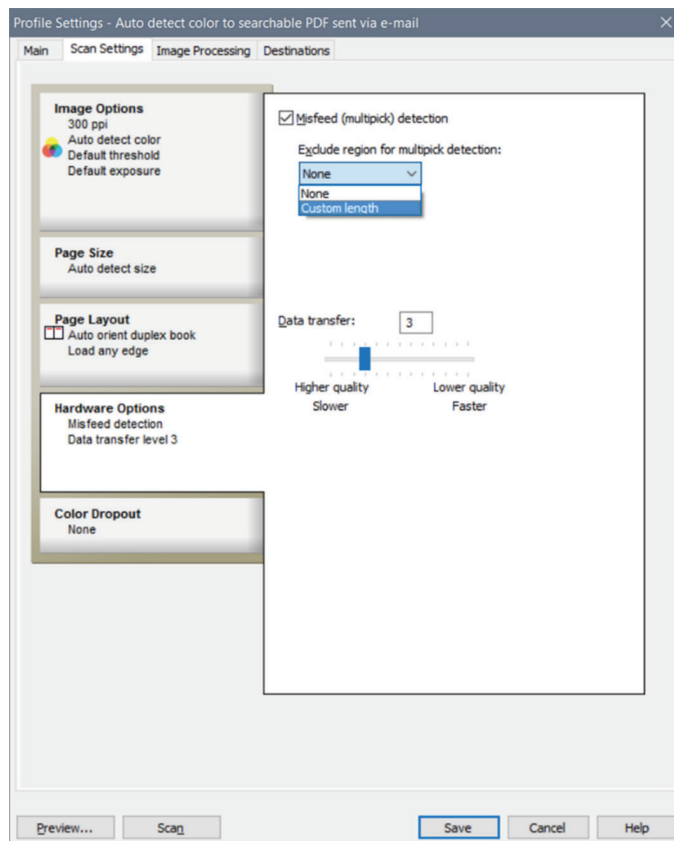
Create and manage scan profiles

Choose from a number of scan profiles with preconfigured settings. Profiles can be created and edited for common scanning scenarios. You can even give profiles descriptive names that appear on the device control panel.



Save time with helpful settings

From the **Scan Settings** tab, under **Hardware Options**, you can turn on misfeed detection. You can also specify a region of the scan to be excluded from multi-feed detection—for example, a note or a piece of tape placed on the page, which could be misinterpreted as a multi-feed.

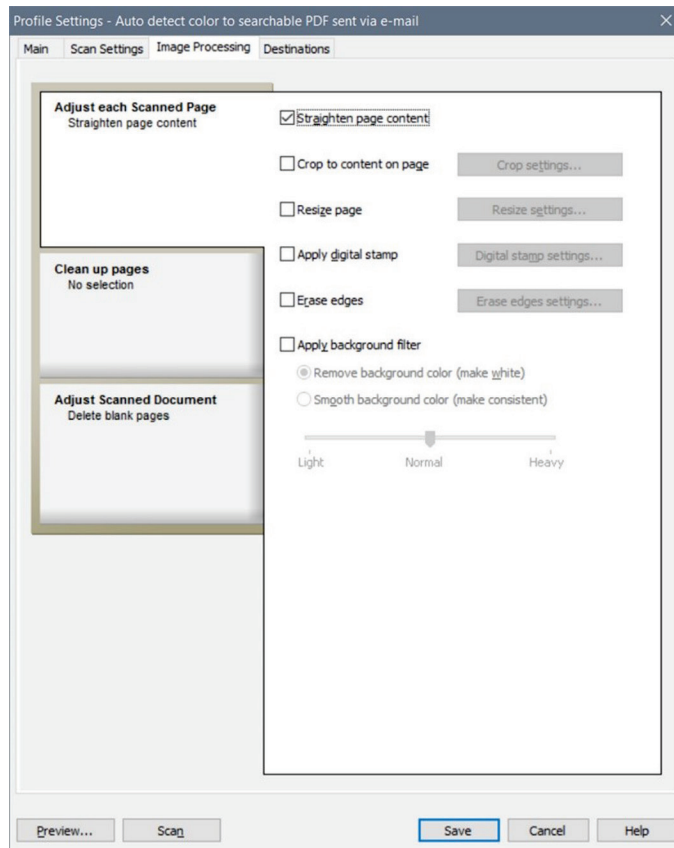


Work smarter and automate jobs with customized, one-touch settings. Spend less time scanning and more time focused on what matters most to your business.

Get the results you want

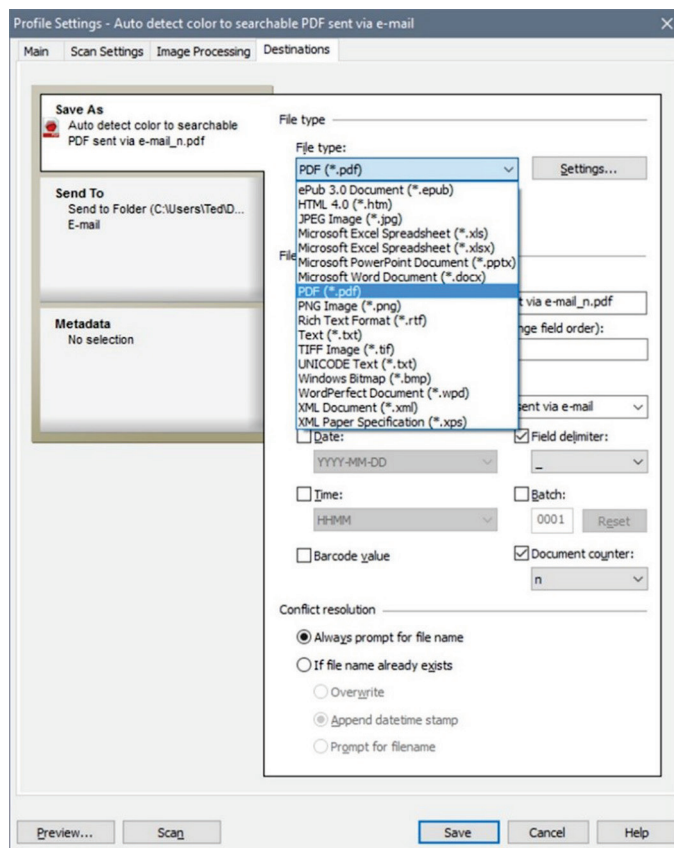
From the three fly-out menus under the **Image Processing** tab, you can:

- Take advantage of automatic tools to straighten page content
- Crop to the paper size or to the page content
- Resize pages for consistency
- Mark your document with a digital stamp
- Erase edges for a cleaner look
- Remove or regularize color backgrounds to improve legibility and consistency
- Remove blank pages, perform batch separation, remove punch holes, and more

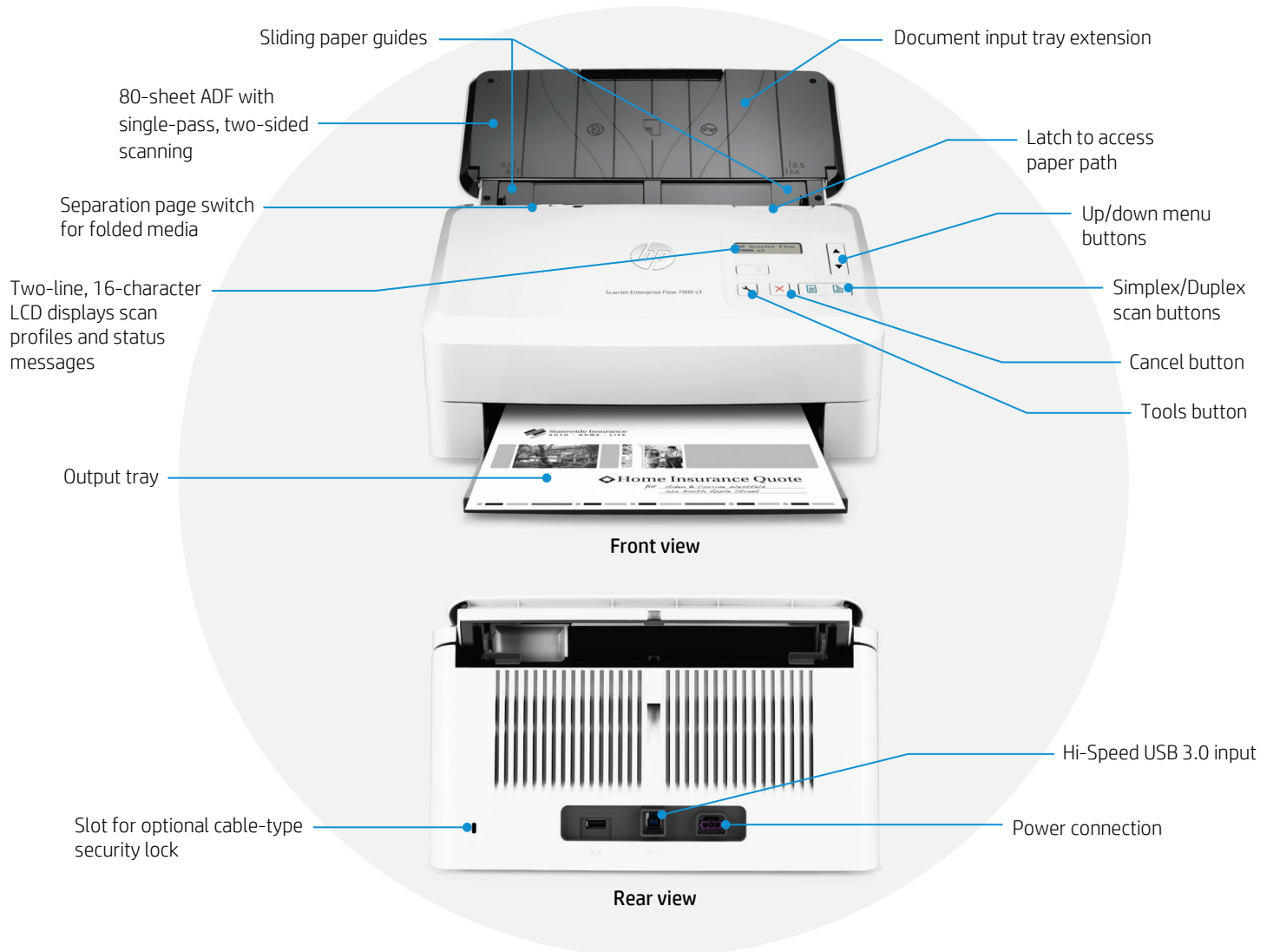


Save what you want, where you want

The **Destinations** tab, **Save As** menu, lets you choose from common file formats. You can select routing to archival, processing, or begin a business workflow. Add an optional counter and reorder components of the file name by dragging and dropping them.



Get to know the HP ScanJet Enterprise Flow 7000 s3



What's new?



HP ScanJet
Enterprise Flow
7000 s3



HP ScanJet
Enterprise Flow
7000 s2

Up to 75 ppm/150 ipm scan speed (black-and-white, grayscale, and color)¹

Up to 45 ppm/90 ipm (black-and-white, grayscale, and color)¹

66% faster scan speeds for black-and-white and color

80-sheet ADF

50-sheet ADF

Scan larger jobs more easily with a 60% larger ADF

7,500-page daily duty cycle

3,000-page daily duty cycle

Increase productivity with a 2.5x higher daily duty cycle

Scan A3 folded/scan card without a carrier sheet

Not available

More convenient A3 scanning

Supports HP Web Jetadmin,³ and Kofax VRS 5.1 Professional

Not available

A more comprehensive solution set

Supports 10.7-110 lb (40-413 g/m²) media weight

Supports 11-56 lb (41-209 g/m²) media weight

More than 50% greater ADF media weight capacity

Technical specifications

Product number	L2757A
Scanner type and modes supported	Sheet-feed scanning with ADF, single-pass two-sided scanning, color, grayscale, or black-and-white
Scan technology	CMOS Contact Image Sensor (CIS) using LED light source, dual-head ADF scanner
Other advanced features	Auto-color detect, auto-crop, auto-exposure, auto-orient, optical character recognition (OCR), edge removal, background cleanup, remove hole, color drop out, straighten the page, scan to cloud, scan to email, PDF security, misfeed detection advance setting, batch processing, barcode, scan to multiple destinations
Duty cycle (recommended)	7,500 pages per day
Control panel	2-line 16 character per line LCD display, Simplex button, Duplex button, Cancel button, Power button with a LED and Tool button
Scan speed at 300 dpi¹	Up to 75 ppm/150 ipm (black-and-white, grayscale, and color)
ADF scan resolution	Optical: up to 600 dpi (color and mono, sheet-feed); output dpi settings: 75, 150, 200, 240, 300, 400, 500, 600
Bit depth and grayscale	24-bit external, 48-bit internal; 256 grayscale levels
Compatibility	TWAIN certified version 2.1, ISIS, WIA
File formats (text and images)	For text and images: ePub 3.0, HTML 4.0, Excel file format (*.xls, *.xlsx), PowerPoint file format (*.pptx), Word (*.docx), WordPerfect (*.wpd), searchable PDF, JPEG, PNG, BMP, TIFF, Text (.txt), Rich Text (rtf), XML, and XPS
Scan input modes	Two scan modes (simplex/duplex) on front-panel for HP SDSS in Win OS and third party applications via TWAIN, ISIS, and WIA
Memory	512 MB
Processor	550 MHz
ADF media specifications	
Input capacity	Up to 80 sheets
Custom sizes	2 x 2 in to 8.5 x 122 in (5.08 x 5.08 cm to 21.6 x 309.9 cm)
Standard sizes	Letter, Legal, Executive; A4, A5, A6, A7, A8, B5, B5 (JIS); long page support up to 122 in (309.9 cm)
Media weights	10.7 to 110 lb (40 to 413 g/m ²)
Media types	Cut sheet paper, printed paper (laser and ink), pre-punched paper, bank checks, business cards, freight bills, carbonless forms, plastic carrier sheets for easily damaged documents, previously stapled media with staple removed
Connectivity	USB 2.0 and SuperSpeed USB 3.0
Scan destinations	Scan to local or network folder, Scan to email (using SMTP or via locally configured email client), Scan to Microsoft® SharePoint®, Scan to cloud destinations, Scan to FTP, Scan to printer
Compatible operating systems	Microsoft Windows® 10, 8.1, 8, 7
Minimum system requirements, Windows	Microsoft Windows 10, 8.1, 8, 7: 32-bit or 64-bit, 2 GB available hard disk space, CD-ROM/DVD drive or Internet connection, USB port, Microsoft Internet Explorer
Dimensions (width x depth x height)	12.20 x 7.79 x 7.48 in (310 x 198 x 190mm) ⁴
Weight	8.4 lb (3.8 kg)
What's in the box	HP ScanJet Enterprise Flow 7000 s3 sheet-feed scanner, installation guide, CD, power cord, USB cable, power adapter
Software included	HP WIA scan driver, HP TWAIN certified scan driver, HP Smart Document Scan Software, HP Scanner Tools Utility, I.R.I.S. Readiris Pro, I.R.I.S. Cardiris, Nuance PaperPort, EMC ISIS driver, Kofax VRS 5.1 Professional
Warranty	One-year bench limited warranty whole unit replacement, phone and Web support included. Warranty may vary by country as required by law. Go to hp.com/support to learn about HP world-class service and support options in your region.

Environmental specifications

Environmental ranges

Temperatures Recommended operating: 50 to 95° F (10 to 35° C); Storage: -40 to 140° F (-40 to 60° C)

Relative humidity range Operating range: 15 to 80% RH (non-condensing); Storage range: 0 to 90% RH (non-condensing)

Acoustic sound power emissions 7.0 B(A)

Power specifications⁵ ENERGY STAR® certified, ErP Lot 26, CECP, EPEAT® Silver⁶

Power supply External power adaptor; Input: 90 to 246 VAC (50/60 Hz)

Power consumption Ready: 6.7 watts, Sleep: 0.9 watts, Off/Auto-off: 0.1 watts

Energy-saving features HP Auto-Off technology, LED light source (no warm-up time required)⁷

Environmental specifications RoHS-compliant, HP GSE standard

Safety and regulatory compliance IEC 60950-1:2005 +A1+A11+A12 and all applicable amendments; CSA/UL 60950-1, 2nd edition (2007); EN 60950-1:2006 +A11 +A1 +A12+A2; EAC safety; Canada cUL CoC; China CCC; European Union CE; Kenya PVOC; Kuwait TER; Nigeria SON; Saudi Arabia SASO; South Africa NRCS; Taiwan BSMI; Ukraine safety approval

Electromagnetic emission standard Class B Emissions; CISPR 22:2008 (International); European Union EMC Directive 2014/30/EU, EN 55022:2010 (CE mark); China GB9254-2008 (CCC); Taiwan CNS13438:2006 (BSMI); USA CFR47 Part 15, Subpart B (FCC); ICES-003:2012 Issue 6 (Canada); Australia C-tick (includes New Zealand); KN 22 and Korea KCC; EAC EMC Certificate; Ukraine EMC approval; EN 61000-3-2:2014 (harmonics); EN 61000-3-3:2013 (flicker); Immunity CISPR 24:2010, EN 50024:2010

Ordering information

Use accessories and supplies specifically designed for the scanner to help provide efficient performance. To order the accessories and supplies listed here, go to hp.com. To contact HP by country, please visit hp.com/go/contact. If you don't have access to the Internet, contact your qualified HP dealer, or call HP (U.S.) at (800) 474-6836.

Scanner	HP ScanJet Enterprise Flow 7000 s3 Sheet-feed Scanner	L2757A
Supplies	HP ScanJet Enterprise Flow 7000 s3 roller replacement kit	L2756A

Learn more at
hp.com

Notes

¹ Black-and-white scan speed measured at 300 dpi using included HP Smart Document Scan Software. Color scan speed measured at 300 dpi. Actual processing speeds may vary depending on scan resolution, network conditions, computer performance, and application software.

² HP EveryPage is referred to as HP Precision Feed on HP ScanJet devices introduced prior to May 2013.

³ May require a firmware upgrade. HP Web Jetadmin is available for download at no additional charge at hp.com/go/webjetadmin.

⁴ With input and output trays folded and covers closed.

⁵ Power requirements are based on the country/region where the scanner is sold. Do not convert operating voltages. This will damage the device and void the product warranty.

⁶ EPEAT Silver registered models of this product are available where HP registers imaging and equipment products.

⁷ Compared with products that use cold cathode fluorescent lamp (CCFL) copying.

Sign up for updates
hp.com/go/getupdated



© Copyright 2016-2017, 2020 HP Development Company, L.P. The information contained herein is subject to change without notice. The only warranties for HP products and services are set forth in the express warranty statements accompanying such products and services. Nothing herein should be construed as constituting an additional warranty. HP shall not be liable for technical or editorial errors or omissions contained herein.

ENERGY STAR is a registered trademark owned by the U.S. Environmental Protection Agency. Microsoft and Windows are U.S. registered trademarks of the Microsoft group of companies.

