

Chigasaki Wave



Chigasaki Wave Club

ウエーブ
茅ヶ崎 波 倶楽部

Sea breezes are like precious friends, easing your mind, and whispering encouragement to you.

Grapes in Samukawa

In the middle of summer, freshly picked grapes are sold in front of a hut along prefectural road No.46, or Industrial road, in Samukawa on the north of Chigasaki. Drivers and regular customers sometimes drop in at the hut of *Grape Leaf*. The grape season starts in mid-July and is over at the end of August. Fortunately, this season had ended just before typhoon No 15 landed on the Shonan area.

During the 50 days, various varieties of grapes such as Himrod Seedless, Azuma-Shizuku, Ryuho, Aki-Queen, Honey Seedless, Queen Nina, Tosa Taro, Pione and Olympia are displayed on the counter in this order. Azuma-Shizuku, developed in Fukushima, is quite succulent. Aki Queen, Pione and Honey Seedless are hybrids of the famous Kyoho. Ryuho is a descendant of Golden Muscat. The improved variety is juicy and quite sweet, but its fruit falls off so easily that Ryuho rarely comes to the market. Olympia was developed in 1964, the year of the previous Tokyo Olympics. The variety is also quite delicious, but the vine bears a small number of grapes, so the variety requires a larger yard, and its grapes crack easily. Consequently, not many farmers cultivate this variety today. All the grapes on the counter are a lot fresher and juicier than those displayed on the shelves in shopping centers. In addition, such rare varieties as Ryuho and Olympia are also available at this hut.

At *Grape Leaf*, grape cultivation started about 60 years ago. This area satisfies conditions for vineyards: plain land, a lot of daylight, the water table below about one meter, a small amount of rain during the harvest season, and more.



At its vineyard next to pears and other fruits orchards, a horizontal trellis spreads. As leaves of horizontally extended vines can absorb the sunshine efficiently, and are less likely to be infected with diseases. Besides, this type of trellis is effective to protect vines from strong winds. The picture shows the trellis on the day after powerful typhoon No.15 inflicted heavy damage in Chiba prefecture. The life of a vine is normally from 10 to 15 years. Young vines are grafted on rootstocks by the method of saddle grafting.

To maintain vineyards, growers have to do many kinds of work. Trimming, mowing, irrigation, the application of disinfectants and fertilizers are only a few examples of work they do to grow excellent grapes. As for Shonan Pears, see CW4.

Chigasaki emergency day

When we come across people who are suffering acute diseases, we should call 119 immediately. But it is not all we can do. As it takes about 9 min on average for an ambulance to come, if we apply first aid on such people while waiting for the rescue squad, the chances of saving their lives rise considerably.

A class to learn emergency measures to save people who are experiencing, for example, a heart attack or stroke was held by the Chigasaki city fire station at the entrance hall of AEON Central Chigasaki Store. On the afternoon of Sept. 8 (Sun), many shoppers dropped in at the event. They practiced heart massage for themselves, and learned how to use an Automatic External Defibrillator (AED), which we see everywhere these days. After the lesson, participants, including the reporter, felt they had mastered each technique. However, knowing is not enough, we must do. We will need a lot of courage when we use the AED in anger for the first time. The fire station holds these classes at its office and public halls almost every month. It is worth going. Only practice makes perfect.



Volunteer groups in and around Chigasaki

Association of art friendship from a baby

An NPO named the *Association of art friendship from a baby* has offered art events for children several times a month at *Umikaze-terrace* and the city-run art museum in Chigasaki. Their activities are based on the notion that artworks foster children's minds. The group leader, Megumi Tomita, also says it is important for children to feel that adults around them, including parents, know what they have in their minds, as she thinks such a discovery makes the children confident and relaxed so that they will be able to communicate freely with various people after they grow up. Group members have supported parenting by responding positively to any question from mothers or fathers about their children's growth at the NPO's workshops, which are also a pleasant place for both children and their parents.

The NPO's events consist of three parts; first, producing artworks such as painting on paper, cloth or sometimes on recycled materials; second, playing musical instruments and singing; and third, discussion about child-rearing. On the third Wednesday in September, four young families – infants aged from 17 months to three years, their mothers, and a father – joined in Tomita's workshop held in the art and handiwork room at *Umikaze-terrace* to make a paper-ball pumpkin for Halloween. They painted the paper ball, whose core was made of newspaper, with orange watercolor and pasted eyes and a mouth made from black origami or folding square papers on the ball. A three-year-old girl continued to paint constantly until the whole ball became orange, but younger children did it at different paces. Tomita said parents need to be tolerant, and allow for children's individual ways.

Her activities started in Tokyo 25 years ago, targeting various age brackets from kindergarteners to adults to senior people. When she moved back to Chigasaki, her hometown, 15 years ago, she added small babies to her targets. Her workshop is held mainly in Hiratsuka Museum, and events to appreciate artworks with children take place at museums in many cities, including one in Chigasaki, at the requests of these museums. Her methods have spread in such prefectures as Tokyo, Kanagawa and Ishikawa.

HP <https://www.art-friendship.org>

Facebook https://www.facebook.com/NPO_法人-赤ちゃんからのアートフレンドシップ協会-366981363498241/



Meija Makule Chigasaki won OP6 category championship in the 15th Hinohara Cup

The slow-pitch softball tournament named the Hinohara Cup took place at Ota Stadium and Oi Futo Park in Tokyo on September 14 (Sat) and 15 (Sun). The tournament, named after the late Shigeaki Hinohara, the former head of St. Luke's International Hospital in Tokyo, has three age categories: OP6 (60 and older), OP7 (68 and older), and OP8 (75 and older).



MMC6, one of three teams from Meija Makule Chigasaki (MMC) were victorious, and the other two, MMC7 and MMC8, finished second. MMC6 defeated the Honolulu team, HAWAII ZEN, at the final game to win the class championship. MMC7 and MMC8 also went into the finals, but were unfortunately defeated. The numbers of participating teams were 9 for OP6, 8 for OP7, and 5 for OP8.

As for Meija Makule Chigasaki, see CW39.



Disaster prevention

A lecture on *abnormal weather and evacuation* took place at the Samukawa Residents' Center on September 22 (Sun). The overcast afternoon due to approaching typhoon No. 17 suggested it could rain at any time.

Before an audience estimated at over 600, weather forecaster Tsukasa Yoda explained the phenomena and disasters caused by global warming. The sea level has risen by 19 cm over the last 110 years. It is often said this was caused by the melting of ice on Greenland and Antarctica, but the main cause is the thermal expansion of sea water.

In the Shonan area, the most likely natural disaster is flooding, as the Sagami, Koide and several other rivers run through the area. Being aware of the geographical features of the places we live in and the routes to evacuation sites by learning flood hazard maps will be helpful to protect ourselves. The torrential rains in western Japan last year caused many casualties. Surveys by Hiroshima prefecture found that only 4% of the residents of a damaged area followed the warning and evacuated. The rest of the people remained in their homes, just because none of their neighbors evacuated, or their areas had not been inundated. And most of the fatalities stayed on the first floor of their houses. To free ourselves from the conviction "It won't happen to me," is most difficult, but most important.

Interested in Japanese proverbs?

(1) 短気は損気

(TANKI WA SONKI)

TANKI means short temper, **WA** to be and **SONKI** a temper which causes a person loss.

There should be no need to explain why people should not lose their temper. By exploding with anger, you may lose money, claims, opportunities, friends and/or even people's trust in you. A man said his pet dog keeps away from him when he gets angry. It is not easy to control your temper at all times, as modern living is filled with various troubles and they often drive you mad. But another proverb says true patience lies in bearing the unbearable.

The saying is in the Meido-no-Hikyaku (Courier for Hell), a Joruri puppet story written by the then popular playwright Monzaemon Chikamatsu in 1711.

Its English equivalents are:

- Anger punishes itself.
- Haste makes waste, and waste makes want.
- Anger begins with folly and ends with repentance.

(2) 無い袖は振られぬ

(NAI SODE WA FURARENU)

NAI means not to possess, **SODE** sleeves, **WA** to be and **FURARENU** cannot be swung.

The sleeves of kimono are long and droop (see the photo below). People of the Edo Era placed their wallets in the sleeves. Thus, sleeves came to indicate money, and this proverb means one cannot afford to give even a penny, when one is penniless. No matter how much one wants to help someone else, one cannot do anything unless one has money. This saying is in Nanshyoku Okagami, or The Great Mirror of Male Love, a collection of short stories about homosexual love, written by famous writer Saikaku Ihara in 1687.

Did you know such books had been read by ordinary people in the Edo Era? Its English equivalents are:

- Nothing comes from nothing.
- A man cannot give what he hasn't got.
- Where nothing is, nothing can be had.



History of Chigasaki

Mishima Shrine and Votive Tablet

About 400 meters south of Jyokenji Temple (see CW29), there is a shrine called Mishima Shrine. Its worshippers' hall houses a 1.07 m high and 1.65 m wide votive tablet, on which a picture depicting "Chinzei Hachiro Tametomo's bow is so stiff that more than two people are required to draw it" is drawn. The excellent votive with a powerful and magnificent stroke of a brush reportedly by the painter of the late Edo Period, Tousen Saikeizan, was dedicated by the village leader and two other men in 1836.

The street passing from Imajuku to Hagisono to Samukawa in front of Mishima Shrine is called "Hachioji road" as it reached Hachioji, or Sakanamichi as fishermen in Nango once sold fish walking through this street. Along the street several old trees stand: Gingko trees in Matsuo Shrine in Imajuku, an evergreen magnolia in front of the Wada family residence, a zelkova in Mishima Shrine and a podocarp in Jokenji Temple. These trees provided passers-by with shade in summer, and protected them from wind in winter.

In the east of the precinct, two stones are exhibited. According to the board standing by them, the larger of the two is assumed to have been used for a bridge across the Koide River. The bridge was constructed in the middle of the Edo Period, but collapsed in the Great Kanto Earthquake in 1923. On the side of the other stone, "1701" is carved. The board says it was placed at a crossing on Hachioji Road, which passed through the center of Hagisono Village.

How to get there: Take a bus for Koyato at the north entrance of Chigasaki Station, get off at Tsujinishi and walk for two minutes.



Bulletin Board The 49th Shonan Film Screening by Cinematique Chigasaki, 2016 British movie "I, Daniel Blake"

Ken Loach won Cannes Film Palme d'Or with this film in 2016.

Venue: Chigasaki City Library, #1 conference room

Date: October 20 (Sun) at 13:30

Running time: 100 minutes

Admission fee: free

First 70 visitors will be accepted.

After the screening, as usual, film critic Takehito Deguchi will comment on the film and answer questions.

So why not spend a relaxed time watching an excellent film for free!



Nature in Chigasaki

Akabane-jusanzu

Akabane-jusanzu is located in the east of Chigasaki, almost bordered to the east by the city of Fujisawa. The area has the headwaters of the Koito River, which is the only river in the city to flow into the Hikichi River, which runs through Fujisawa city to Sagami Bay. The other rivers in Chigasaki, such as the Sen-no, Koide and Komayose Rivers are all in the Sagami river system. The long and narrow valley, extending from north to south along a rough unpaved local road, consists of a creek, marshy areas, groves and grass fields. The area is mostly included in a golf course. The valley, forming the complex environment in a limited area of 2.9 ha, was designated as the city's second special landscape conservation area in 2016, following Shimizu-yato in 2012, as a rich natural environment is preserved there.



Citizens engaging in conservation actions dug a storage reservoir in the little stream. In a pond, *Anotogaster sieboldii* (larva of a dragonfly) was found. And it was confirmed that the pond was also the spawning site of *Lefua echigonia* (fish), *Rana japonica*, and *Rhacophotus schlegelii* (frogs). Forest indices confirmed in the area included *Arisaema thinbergii*, *Geum japonicum* (plants), *Aegithalos caudatus*, *Turdus palliatus* (birds), *Mecopoda nipponensis* (an insect). In addition, many kinds of grass field indices such as *Natula matsuurai*, *Meloimorpha japonica* (insects), *Adenophora triphylla* var. *japonica* and *Securinega suffuticosa* var. *japonica* (plants) were also confirmed. *Lysimachia pilophora* (a plant in the right picture) has only be found in the valley in the city and *Ctenacrosclis mikado* (an insect in the left), whose habitats was once restricted, has restored its population. Meanwhile, *Sualis mitsuhashii* (an insect) has not been observed recently.

The city office has kept systematic maintenance activities, by dividing the area into three parts: the marshy area and surrounding groves, the headwaters and watershed forest zone, and grass field zone. Thanks to their activities, the numbers of non-native creatures have gradually decreased.



People in Chigasaki (12)

Takeshi Kaiko

(A bimonthly serial)



Takeshi Kaikō (1930-1989) was an active Japanese writer involved in wide range of genre from novels, war reportage to essays as a gourmet and an angler. He had always said what a man can be absorbed in in his life is a crisis and a play. He had subjected himself to battlefields in the Middle East and Africa, and to adventurous fishing journeys to the Amazon in Brazil and the Pantanal wetland near the border of Brazil, Bolivia and Paraguay. He tried to pursue the human nature through writing his experiences in every genre.

He won the prestigious [Akutagawa Prize](#) in 1957 with *Hadaka no ōsama* (The Naked King). He experienced a battlefield in [Vietnam](#) as a [war correspondent](#) and was briefly imprisoned by the [Viet Cong](#) in 1964. He translated the experience into his novel, *Kagayakeru yami* (Into a

Black Sun) and won the prestigious [Mainichi Book Award](#) in 1968.

He built a cozy house in Chigasaki, where he can concentrate on writing, and moved there from Tokyo Suginami Ward, in 1974. He had enjoyed eating at a sushi-restaurant with a family-like atmosphere in his neighborhood, and always ordered a rolled sushi, called Kaiko-maki, because it tasted like his mother's. He used to travel around the world to find and taste delicacies, but ultimately he might have been lured back to his mother's taste. In his later years, he wrote numerous essays on food and drink, as well as fishing.

The house has been preserved as a memorial museum with some displays of stuffed animals and fish he had caught, as well as his various works. When you open the door of the museum, you may experience the feeling of him appearing from his den and welcoming you with a big smile. He died of [esophageal cancer](#) in 1989.

At the Chigasaki Yukari-no-jimbutsukan (the People's Museum) located next to the museum, a special exhibition for Takeshi Kaiko will be held from October 12 in 2019 to March 29 in 2020. Please visit both museums if you are interested in his life.



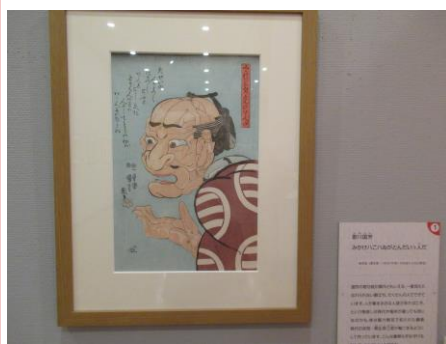
The 23rd Chigasaki Mayor's Cup Amateur Surfing Contest

The 23rd amateur surfing contest was held near the headland on the morning of Sept 8 (Sun), a week later than originally scheduled, by the Chigasaki Surfing Association. Early in the morning, waves were a little higher than usual, and became even higher as time passed because of the approaching typhoon No 15. The contest consisted of 11 categories: short and long surf boards, surfers' ages, men, women and kids and so on, and 43 participants won prizes.



The 2nd Smile Music Chigasaki Festa

The music event took place at Chuo Koen on September 8 (Sun) from 10:00 to 16:00. About 20 groups of local musicians performed on two stages. The event offered an opportunity for them to show their performances just like in the Shonan Festival held in early summer. More than 40 food and beverage tents were set up, and at the sports culture corner, wrestling and karate trainers gave excellent demonstrations. The event is newly established and was less crowded than traditional ones, but it would be good if the event continues for years and keeps providing local musicians with a place to show off their skills.



Exhibition of mysterious pictures at Chigasaki City Museum of Art

Mysterious pictures mostly drawn between the late Edo and early Meiji eras are now being exhibited. The 111 strange and a little weird paintings include works by noted Hokusai Katsushika and Hiroshige Utagawa. Ordinary people in those days, just before the Meiji Restoration, would have enjoyed fully-matured popular culture, including ukiyoe. More than half of the paintings are works by drawers of the Utagawa school. The exhibition is to be held until November 4 (Mon). Admission ticket (yen): adult 700, student 500, high schooler and younger, citizen aged 65 and older, and disabled citizen free.

Horseback archery at Samukawa Shrine



An annual horseback archery ritual took place at Samukawa Shrine on the afternoon of September 19 (Thurs). Eleven archers tried to shoot three targets placed along a 200 m straight course. Each archer performed twice, and six good performers advanced to the second stage. Then they performed twice against three smaller targets to become the best archer. Horseback archery is a combination of ritual and sport; the first round is dedicated to the gods, and the second round is for participants themselves. They contend with each other.

Koide River Higanbana Festival

The opening ceremonies of Higanbana Festival took place at several sites along the Koide River in Fujisawa, Chigasaki and Samukawa on September 22 (Sun). But only a few Higanbana, or Red spider lily, were in bloom by the day. According to a newspaper, this year's unusually hot summer delayed the blooming of the plant across the nation. The photo on the right was taken on the day before the opening day. No flowers were observed in the Serizawa area. Global warming may be a reason, but last summer was also hot, wasn't it?



Chigasaki Jamboree cancelled

Chigasaki Jamboree was to be held at Satoyama Park on September 23 (Mon), but was cancelled as weather reporters forecast that the approaching typhoon No. 17 would bring heavy rains and winds, and actually it did.

The 2nd Chigasaki Orange Day

Orange Day, an event to support older people, was held at City Hall on September 29 (Sun) from 9:50 to 15:00. To understand and support people who suffer from dementia or have cognitive impairment, and to take preventive measures against these problems are purposes of the movement. Exercise (see the photo), magic shows, plays, a panel discussion, consultations with doctors and other programs were carried out.



Events in October and early November

Citizen Gallery (☎ 0467-87-8384) at the exhibition room on the 4th floor of N'EST-CE PAS Chigasaki
Admission free!

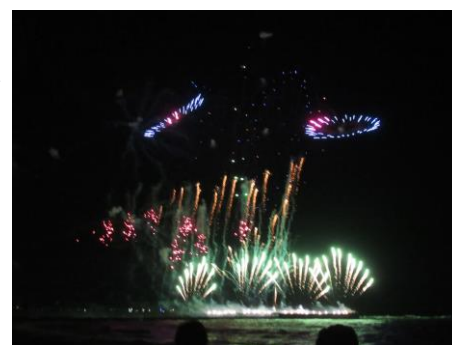
The 14th Yukikai exhibition (pictures, photos, handicrafts and rubbings) by Yukikai:
Sept 30 (Mon) 13:00 ~ 17:00, Oct 1 (Tues) to the 5th (Sat) 10:00 ~ 17:00
Photo exhibition by Chigasaki Chamber of Commerce and Industry photo class:
Oct. 9 (Wed) to the 12th (Sat) 10:00 ~ 18:00, the 13th (Sun) 10:00 ~ 16:00
Painting exhibition, Green secret stronghold by Kitamachi molding atelier:
Oct 18 (Fri) 15:00 ~ 18:00, the 19th (Sat) 10:00 ~ 18:00, the 20th (Sun) 10:00 ~ 17:00
Izumi Club calligraphy exhibition (the 35th anniversary) by Izumi Club:
Oct 24 (Thurs) 12:00 ~ 17:00, the 25th (Fri) to the 27th (Sun) 9:00 ~ 17:00
Artwork exhibition by Shin-nen-kyo Chigasaki western branch:
Oct. 29 (Tues) and the 30th (Wed) 10:00 ~ 16:00
Exhibition of cloisonné wears, photos, woodcuts and mobiles by Saiyu-kai:
Oct. 31 (Thurs) 13:00 ~ 16:00, Nov. 1 (Fri) and the 2nd (Sat) 10:00 ~ 16:00, the 3rd (Sun) 10:00 ~ 15:00

Chigasaki Environmental Fair

The fair will be held at City Hall and Comprehensive Gymnasium on October 5 (Sat) from 10:00 to 15:30. Doctor Koichi Goka will lecture on insects from 10:20 for an hour.

Chigasaki Southern Artistic Fireworks Display 2019

The 2nd Chigasaki Southern Artistic Fireworks Display will be held on October 19 (Sat) from 6:30 to around 7:30. A rocket per 30 seconds will be launched.



Citizen Cultural Festival

The 58th Citizen cultural festival will be held at Civic Hall and City Hall from October 3 (Thurs, National Sports Day) to December 1 (Sun).

Performances on stage (Civic Hall)

Picture-story show and recitation - Oct 5 (Sat) 13:00 ~ 16:30	Noh Chant Festival - Nov 10 (Sun) 10:00 ~ 16:00
Japanese Dance - Oct 6 (Sun) 10:30 ~ 16:00	Autumn Concert - Oct 20 (Sun) 13:00 ~ 16:50
Chigasaki Ohayashi Festival - Oct 6 (Sun) 10:30 ~ 15:30	Chorus Festival - Oct 27 (Sun) 12:30 ~ 18:00
Ginkenshibudo (Japanese dancing with a sword while reciting Chinese poems) - Nov 3 (Sun) 09:40 ~ 16:00	Instrumental Trio Concert - Nov 3 (Sun) 11:30 ~ 16:00
Classical Concert - Oct 12 (Sat) 13:00 ~ 18:00	Biwa Concert - Oct 13 (Sun) 12:30 ~ 16:00
Classical Vocal Concert - Nov 17 (Sun) 14:00 ~ 16:00	Chanson & Canzone - Nov 16 (Sat) 13:00 ~ 16:00
	Western-style Dance - Nov 17 (Sun) 13:30 ~ 16:30

Exhibitions (Civic Hall)

Handicrafts - Oct 3 (Thurs) to the 5th (Sat) 10:00 ~ 17:00, the 6th (Sun) 10:00 ~ 16:00
Flower Arrangement - Oct 19 (Sat) 10:00 ~ 17:00, the 20th (Sun) 10:00 ~ 16:00
Art exhibition - Oct 24 (Thu) 13:00 ~ 17:00, the 25th (Fri) & the 26th (Sat) 10:00 ~ 17:00, the 27th (Sun) 10:00 ~ 16:00
Photography - Nov 1 (Fri) to the 4th (Mon, holiday) 09:00 ~ 17:00, the 5th (Tues) 09:00 ~ 16:00
Chrysanthemums (in front of the Comprehensive Gym) - Nov 1 (Fri) to the 13th (Wed) 09:00 ~ 16:00
Bonsai - Nov 8 (Fri) 13:00 ~ 17:00, the 9th (Sat) 9:00 ~ 17:00, the 10th (Sun) 9:00 ~ 16:00
Calligraphy - Nov 15 (Fri) & the 16th (Sat) 10:00 ~ 17:00, the 17th (Sun) 10:00 ~ 16:00

Literary art (City Hall)

Photo exhibition - Oct 7 (Mon) 13:00 ~ 16:00, the 8th (Tues) to the 10th (Thurs) 10:00 ~ 16:00, the 11th (Fri) 10:00 ~ 12:00
Tanka Festival - Oct 5 (Sat) 13:00 ~ 16:30
Haiku Festival - Oct 6 (Sun) 9:00 ~ 17:00
Tea Ceremony - Nov 3 (Sun) 10:00 ~ 15:00 (fee: 350 yen)

The 36th Citizen Fureai Festival

The festival will be held at Chuo Koen on November 3 (Sun) from 10:00 to 15:00. The Agriculture Festival will also be held on the venue. About 20 dance groups will perform on the stage, and over 60 groups will set up shops for food, clothes, trinkets and others.



Thanks for reading our stories. See you soon!