

RAIDON

NAS

SL3610/20-2S-LB2

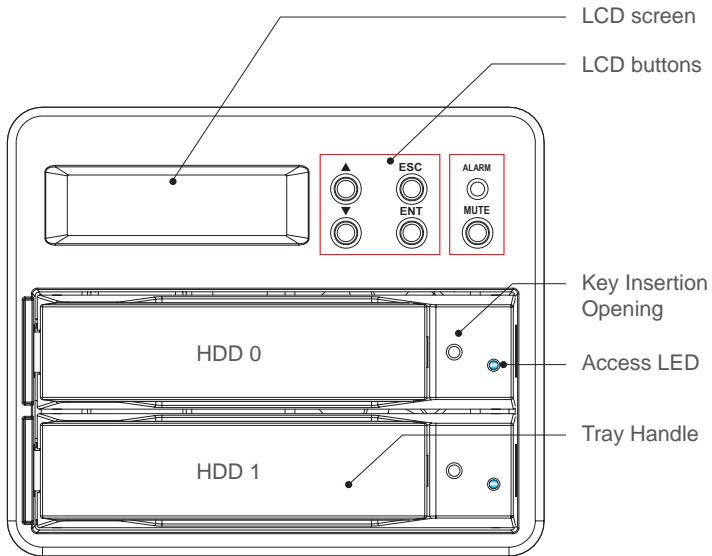
Quick Installation Guide



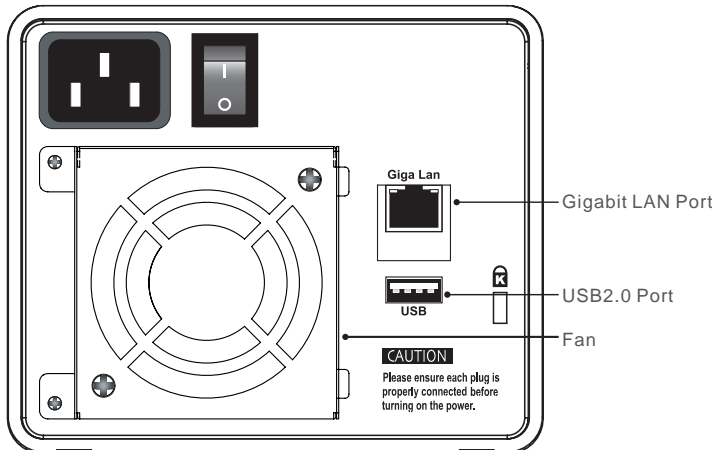
A. Product Diagrams and Contents of Product Package

SL3610-2S-LB2

Front View



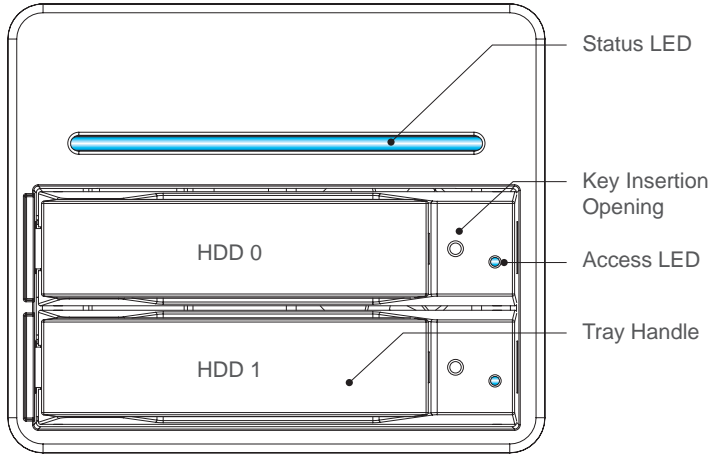
Rear View



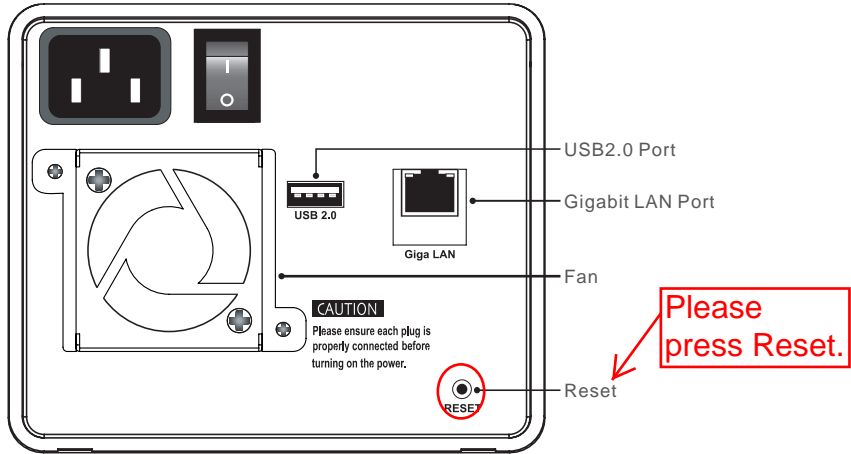
The indicator on the left will light on green when Gigabit LAN Port is connected to Gigabit LAN and the indicator on the right will light on orange when Host Access is enabled.

SL3620-2S-LB2

Front View



Rear View



1. The indicator on the left will light on green when Gigabit LAN Port is connected to Gigabit LAN and the indicator on the right will light on orange when Host Access is enabled.
2. With startup completed, press and hold the "Reset" key for 5 seconds and the system will be reset to default settings.

Contents of Product Package

Item	Quantity
NAS Device	1
AC Power Cable	1
Gbit 2M Cable	1
Quick installation Guide	1
CD (User Guide)	1
Accessory Kit	1

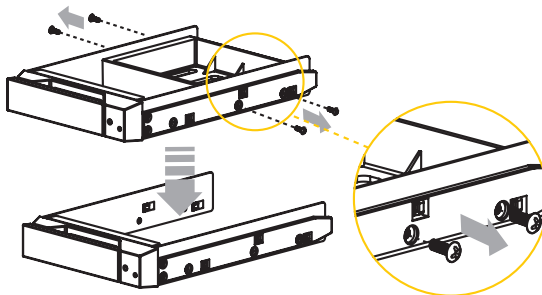
Please make sure that related accessories and the product body are not damaged or missing. If you have any questions, contact the distributor or sales.

B. Precautions Before Application

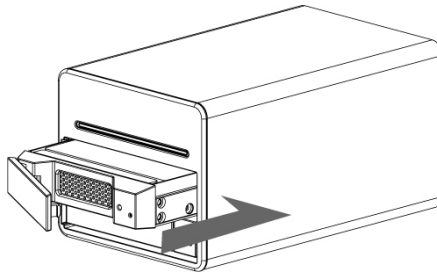
1. We suggest you to use 2 brand new 3.5-inch SATA hard drives with the same brand and model number.
2. If you want to use two used hard drives on RAIDON NAS, please transfer your data on other hard drives in case the data loss caused by setting.
3. The factory default value of this product is RAID 1 with fault tolerance which can survive as one hard drive is failed. If RAIDON NAS is considered as an extra storage, please change the setting to RAID 0 mode. Please be note that change the RAID mode after starting using the device will cause data loss.
4. You can use four setting buttons at the right side of the LCD display to set the device. Please refer to the user manual for the detail information.

C. Hardware Installation

Step 1: Take out the tray and install your hard disk in it. Make sure to fasten the hard disk securing screws to prevent damages caused by unnecessary movement.



Step 2: Once the installation is completed, insert the tray back and fix it firmly in the proper place.




Step 3: Connect the Gigabit LAN port and, finally, connect the power cord.

Step 4: Hardware installation is completed. You can power on the system to start the related setup and application. Please refer to the user manual for detail information.

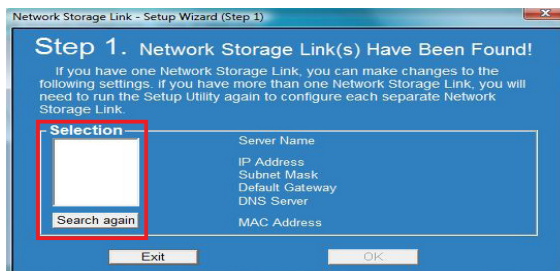
D. Setup Utility (Windows Only)

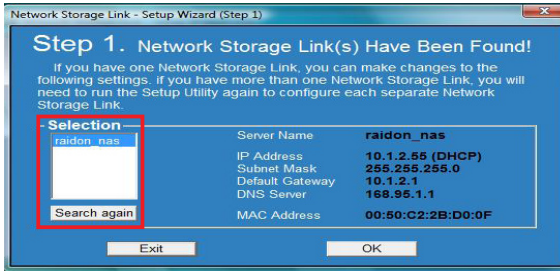
1. Select "Setup Utility" from GUI Utility / NAS in the attached CD (User Guide) and you can see the following screen. Click Setup and enter the install process.

 Notice : "Setup Utility" is only suitable for Windows operating system. For other operating systems, please refer to "2.3 Initial Setup" in the user manual for the information about network setting.

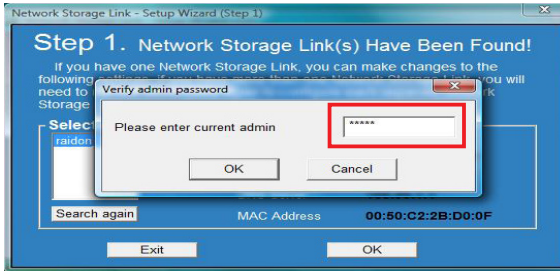


2. "RAIDON NAS" will be shown in the left column, and the related setting details will be shown at the right side. Select "RAIDON NAS" in the left column and click "OK". If "RAIDON NAS" is not shown in the column, please click "Search again" to search the device until it appears. (The system will take about 2 minutes to find the device.)

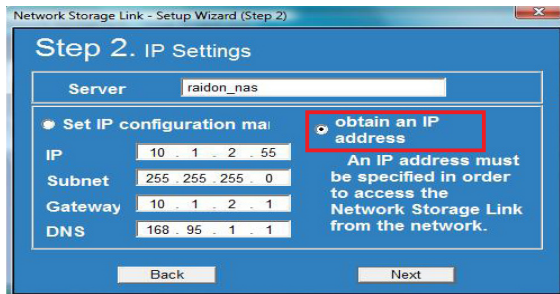




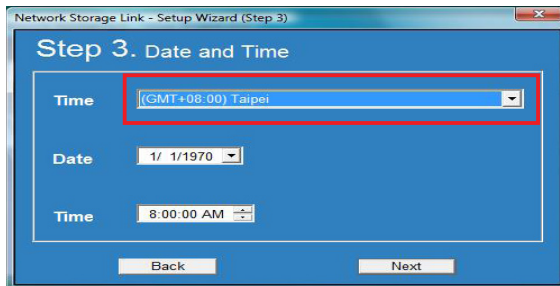
3. Enter the password. (Default password: admin)



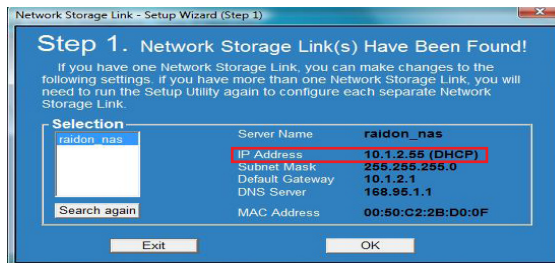
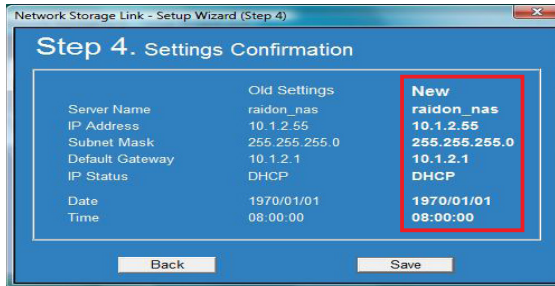
4. Select "Obtain an IP address" and then click "Next" to proceed.



5. Set Date and Time by your time zone and then click "Next" to proceed.



6. Make sure all settings details are right and click “Save” to confirm. The setting process will go back to the step 1. You will see all setting details at the right side.



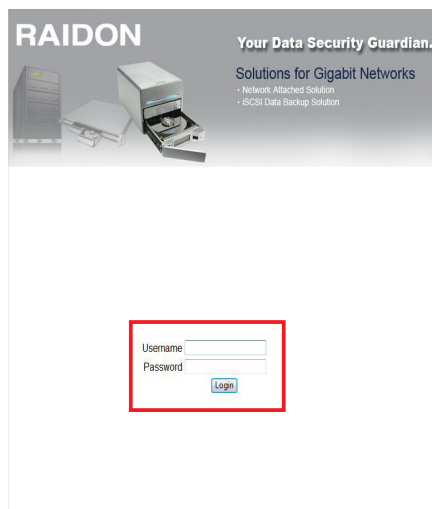
E. Start RAIDON NAS

1. Input IP address on the browser.

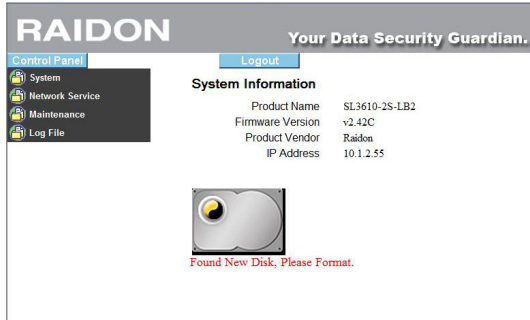
Please input the IP address shown on the setup utility and press enter. The following screen will be shown up.

Input the username and password. Then click “Login”.

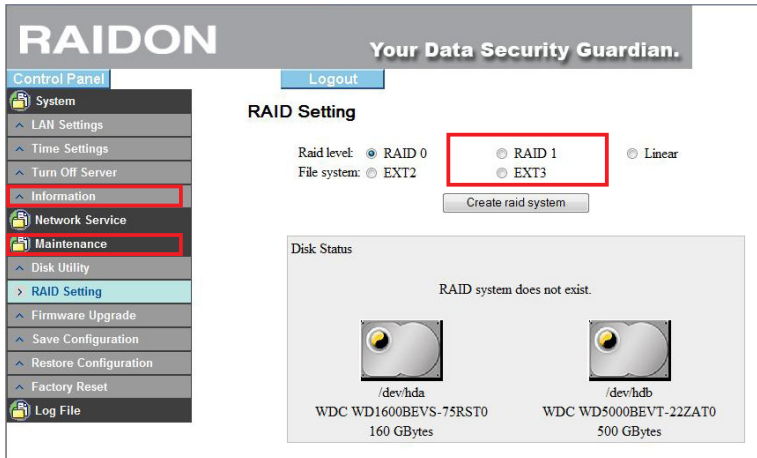
(Default username : admin / password : admin)



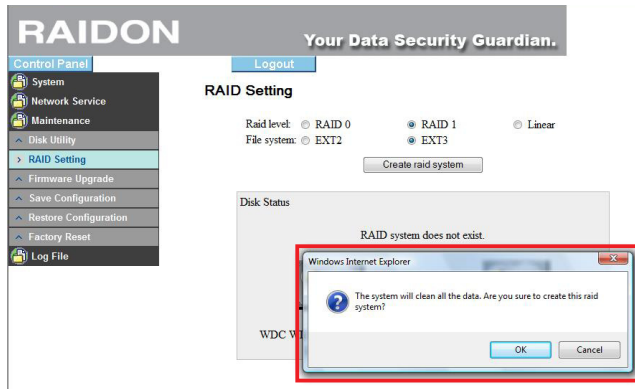
2. The System Information screen will show the new installed hard drives.
Please format the hard drives first, and then proceed to the following process.



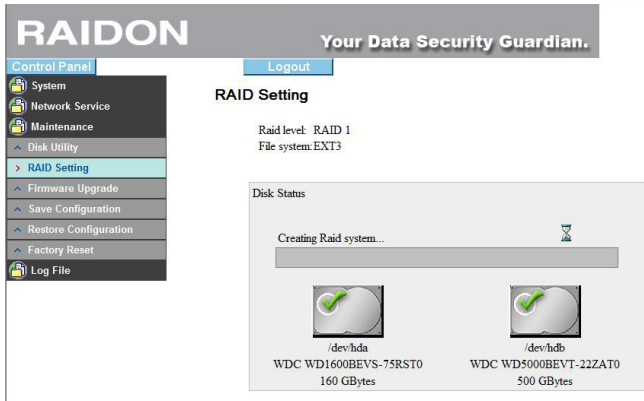
3. Click "Maintenance / RAID Setting" and see the Disk Status at the right side.
Please select RAID level as you need and click "Create Raid System" to build up the system.



4. The system will format the disks and all data saved on the disks will be cleared. Please click "OK" to start the process.



5. Creating RAID System



The screenshot shows the RAIDON web interface. At the top, it says "RAIDON Your Data Security Guardian." Below this is a "Control Panel" menu with options: System, Network Service, Maintenance, Disk Utility, RAID Setting (highlighted), Firmware Upgrade, Save Configuration, Restore Configuration, Factory Reset, and Log File. To the right, there is a "Logout" button and a "RAID Setting" section. Under "RAID Setting", it displays "Raid level: RAID 1" and "File system:EXT3". Below this is a "Disk Status" section with a progress bar labeled "Creating Raid system...". Two hard drive icons are shown, each with a green checkmark. The first is labeled "/dev/1da" and "WDC WD1600BEVS-75RST0 160 GBytes". The second is labeled "/dev/1db" and "WDC WD5000BEVT-22ZAT0 500 GBytes".

6. The system will reboot while the RAID system is built up. It takes about 3 minutes to reboot. After finish, please login again.



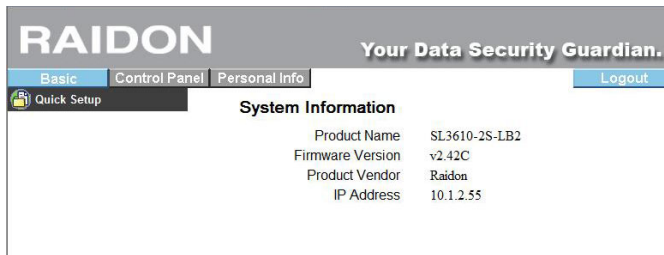
The screenshot shows the RAIDON web interface during a reboot. At the top, it says "RAIDON Your Data Security Guardian." Below this is a banner for "Solutions for Gigabit Networks" with sub-points: "Network Attached Solution" and "iSCSI Data Backup Solution". Below the banner is a "Rebooting....." section with a progress bar and a clock icon. A message reads: "If the page does not refresh automatically in 3 minutes, please press the Login button." Below this is a timer: "Time has passed for 0 minute 21 second". At the bottom is a "Login" button.

7. Input username and password.
Default user name: admin
Default password: admin



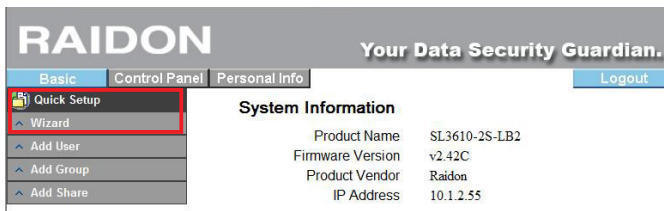
Username
Password

8. After login, you can see the system information.

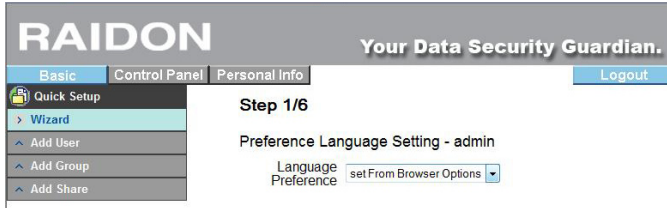


F. Quick Setup

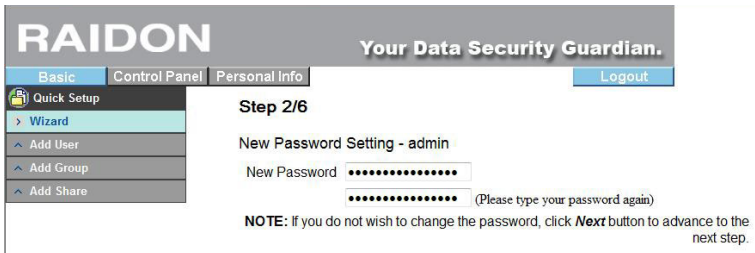
Please select "Quick Setup / Wizard" at the left side to start the quick setup process.



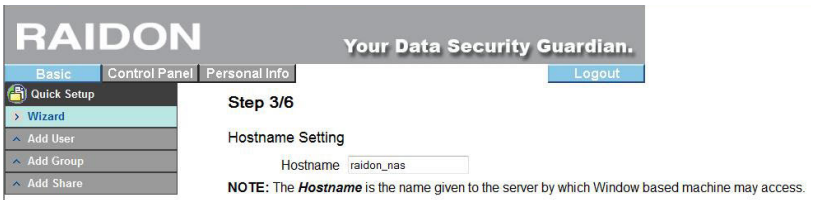
- Setting Language
Select "set From Browser Options".



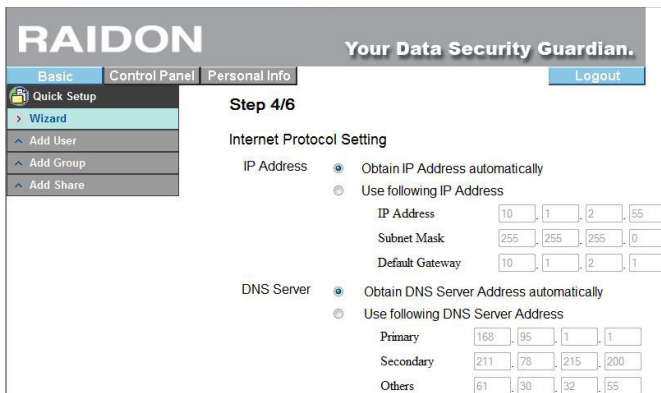
- Change Password
Input new password→Input new password again→click "Next" to proceed.



- Setting Host Name
The host name must be changed. Please make sure to change it and click "Next" to proceed.

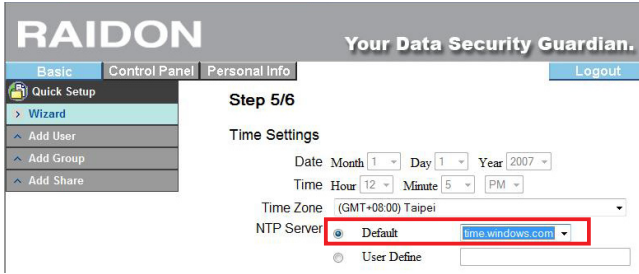


- Setting IP
Select "Obtain IP Address Automatically" and click "Next" to proceed.



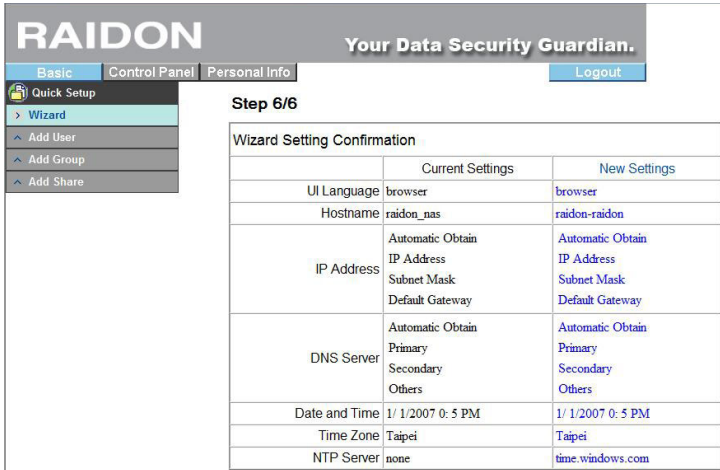
5. Setting Time

Select "Default" to let the time consistent with the browser.



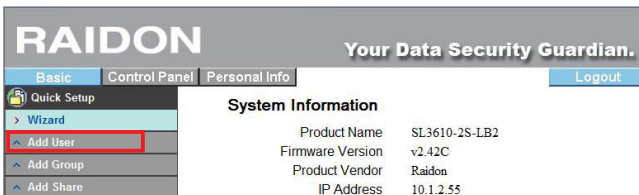
6. Complete Setting

Please check the information in "New Settings" column. If all the information is correct, please click "Confirm" to complete the setting process.



G. Add Users

1. Select "Add User" at the left column.



RAIDON Your Data Security Guardian.

Basic Control Panel Personal Info Logout

Quick Setup Wizard Add User Add Group Add Share

Step 1/3

Add User

User Name

Password

Please type your password again

Description (optional)

Create Shared private Folder

Shared Private Folder Location

Enable Quota of MB

2. Please input username and password, select "Create Shared Private Folder" and click "Next" to proceed to the next page.

RAIDON Your Data Security Guardian.

Basic Control Panel Personal Info Logout

Quick Setup Wizard Add User Add Group Add Share

Step 1/3

Add User

User Name

Password

Please type your password again

Description (optional)

Create Shared private Folder

Shared Private Folder Location

Enable Quota of MB

3. User Management

You can add users into the default group or add group. After finish, please click "Next" to proceed.

RAIDON Your Data Security Guardian.

Basic Control Panel Personal Info Logout

Quick Setup Wizard Add User Add Group Add Share

Step 2/3

User Management - robert

Member Non-member

==== END LIST =====

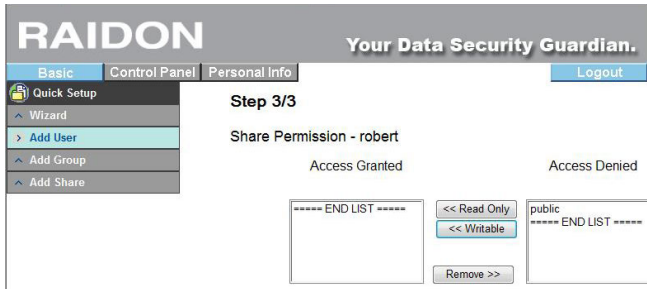
guest-share

==== END LIST =====

<< Add Remove >>

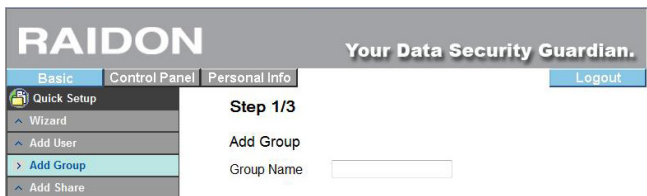
4. Setting Authority

After finish the setting, please click "confirm" to complete the process.



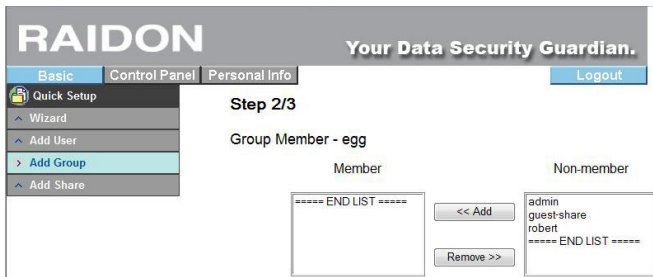
H. Add Group

1. Select “Add Group” at the left side and create the group name. Click “Next” to proceed.



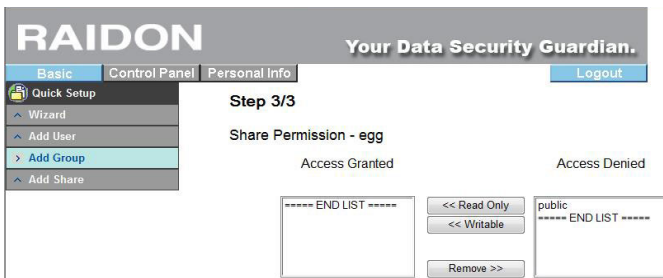
2. Group Management

Add / Remote group members and click “Next” to proceed.



3. Authority Management

After finish the setting, click “confirm” to complete the process.

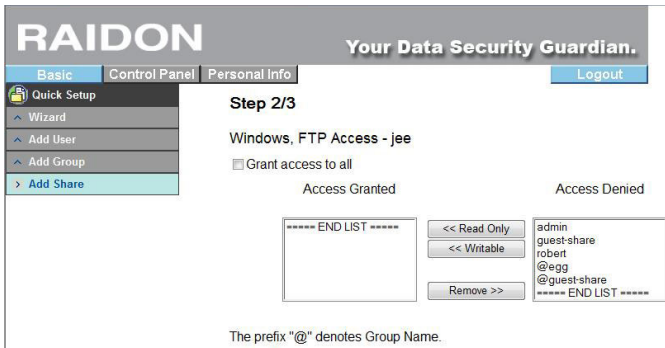


I. Add Shared Folders

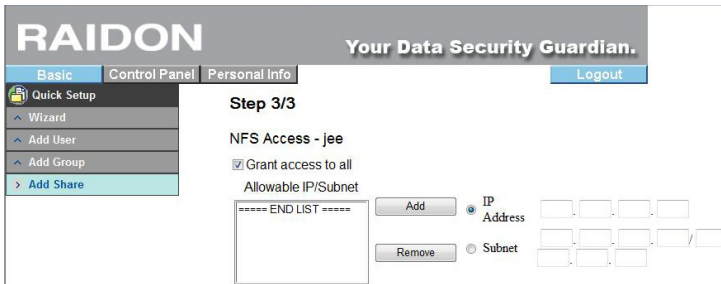
1. Due to the default authority setting is "Public", please add a new folder first. Select "Add Share" at the right side, input the name of the folder and click "Next" to proceed.



2. Select the users who are admitted to access the folder and move them from the right column to the left column. After finish, please click "Next" to proceed.



3. You can setup the accessible IP and click "Confirm" after finish. Then you can see this NAS advice appears in Network Neighborhood.



For detail instruction, please refer to the user manual in the CD(User Guide).

Thank you for using the product of **RAIDON Technology Inc.** The information in the manual has been thoroughly checked before publication, but may not conform to the product actually delivered. Actual product specifications depend on the product shipped to you. Any update in the specifications or product-related information shall not be subject to further notice. For the latest information on the product, please visit the website at **www.RAIDON.com.tw** or directly consult with your contact window of our sales.

If you have any questions on **RAIDON** products or need the latest product information, user manual or firmware, please contact us at **supporting@raidon.com.tw** and we will get back to you as soon as possible.

Copyright © **RAIDON TECHNOLOGY, INC.** All rights reserved.