

BATES PARENTS & FAMILY HANDBOOK

2007-2008



CALENDAR

2007–2008

2007

		AUGUST						
		S	M	T	W	T	F	S
August	1							
		5	6	7	8	9	10	11
		12	13	14	15	16	17	18
		19	20	21	22	23	24	25
		26	27	28	29	30	31	
September	1							
	5							
	18							
	28–30							
		SEPTEMBER						
		S	M	T	W	T	F	S
		2	3	4	5	6	7	8
		9	10	11	12	13	14	15
		16	17	18	19	20	21	22
		23	24	25	26	27	28	29
		30						
October	17–21							
	19–21							
		OCTOBER						
		S	M	T	W	T	F	S
		1	2	3	4	5	6	7
		7	8	9	10	11	12	13
		14	15	16	17	18	19	20
		21	22	23	24	25	26	27
		28	29	30	31			
November	2							
	3–9							
	17–25							
		NOVEMBER						
		S	M	T	W	T	F	S
		4	5	6	7	8	9	10
		11	12	13	14	15	16	17
		18	19	20	21	22	23	24
		25	26	27	28	29	30	
December	1							
	7							
	11							
	15							
		DECEMBER						
		S	M	T	W	T	F	S
		2	3	4	5	6	7	8
		9	10	11	12	13	14	15
		16	17	18	19	20	21	22
		23	24	25	26	27	28	29
		30	31					

2008

		JANUARY						
		S	M	T	W	T	F	S
January	7							
	18							
	21							
	26–Feb. 1							
		FEBRUARY						
		S	M	T	W	T	F	S
		3	4	5	6	7	8	9
		10	11	12	13	14	15	16
		17	18	19	20	21	22	23
		24	25	26	27	28	29	
February	1							
	16–24							
	29							
		MARCH						
		S	M	T	W	T	F	S
		2	3	4	5	6	7	8
		9	10	11	12	13	14	15
		16	17	18	19	20	21	22
		23	24	25	26	27	28	29
		30	31					
March	8–14							
	28							
		APRIL						
		S	M	T	W	T	F	S
		6	7	8	9	10	11	12
		13	14	15	16	17	18	19
		20	21	22	23	24	25	26
		27	28	29	30			
April	4							
	8							
	12							
	22							
	24							
	26							
		MAY						
		S	M	T	W	T	F	S
		4	5	6	7	8	9	10
		11	12	13	14	15	16	17
		18	19	20	21	22	23	24
		25	26	27	28	29	30	31
		JUNE						
		S	M	T	W	T	F	S
		1	2	3	4	5	6	7
		8	9	10	11	12	13	14
		15	16	17	18	19	20	21
		22	23	24	25	26	27	28
		29	30					
May	23							
	23–25							
		JULY						
		S	M	T	W	T	F	S
		6	7	8	9	10	11	12
		13	14	15	16	17	18	19
		20	21	22	23	24	25	26
		27	28	29	30	31		

* Students must register unless currently on a Bates-approved program or approved leave. Late registrants are subject to late fees and may be required to petition the Committee on Academic Standing to request late registration approval.

**Final examinations cannot be rescheduled because of student travel plans.

STATEMENT OF COMMUNITY PRINCIPLES



Membership in the Bates community requires that individuals hold themselves and others responsible for honorable conduct at all times. Together we create the educational and social setting that makes Bates College unique, with an atmosphere characterized by trust and mutual concern. Our actions must support our ability to work, study, live and learn together productively and safely. We are dedicated as a community to intellectual honesty and to the protection of academic freedom. These values are fundamental to scholarship, teaching and learning. We expect each other to maintain the highest integrity in all of our academic and social undertakings.

GREETINGS

Greetings from the President and the Dean of Students



Elaine Tuttle
Hansen

Tedd R.
Goundie



Dear Bates Parents and Families,

Welcome to Bates.

We are proud and privileged to be part of four critical years in the lives of your remarkable sons and daughters. Through participation in this community of eager learners and dedicated teachers, they will discover their passions and develop their fullest potential. They will make lifelong friends and build habits of meaningful association and respectful collaboration. They will be prepared to do good work — work that is excellent in its own right, and work that makes a difference in the world.

Our highest priority is ensuring that the longstanding value of a Bates education continues to flourish and evolve. All Bates faculty and staff are our partners in this enterprise, and we all know that the involvement of parents and families has been, and always will be, vital to our success. As we look forward to the challenges and achievements of the coming year, we thank you for your trust and support, and we encourage you to participate in the life of the College, both in person and through our Web site, www.bates.edu.

Please direct any questions or suggestions about the material in this *Handbook* to the Office of the Parents & Family Association or to the Office of the Dean of Students. Of course, your inquiries are welcomed by any office, and for easy reference a directory of offices appears on the following pages.

Our best wishes for the coming year. We look forward to seeing you on campus.

Yours truly,

Elaine Tuttle Hansen
President

Tedd R. Goundie
Dean of Students



On behalf of the Bates Parents & Family Association (BPFA), welcome to the 2007–08 academic year at Bates! Each year of your son’s or daughter’s life at Bates, whether it’s the first or fourth (or your first or fourth Bates student) brings new excitement and enthusiasm, as well as new questions and needs for you as parents. We hope that you find this year’s *Handbook* helpful in answering your questions about academic, residential and extracurricular life at Bates.

Bates Parents & Family Association volunteers serve as liaisons between all parents and the College, through the BPFA Office, which seeks to provide parents with the optimum level of communication and opportunity for involvement. There are many volunteer opportunities within the BPFA, also described in the following pages, and you are encouraged to consider this as a meaningful way to be involved and have a positive impact on your Bates student’s life — while giving him or her the space a college student might desire.

For more information about these programs or to get involved, please contact:

Christina Wellington Traister ’94, Director of the BPFA Office
207-786-8370 or parents@bates.edu

Terry and Kathy Hoffer, Parents of Emily ’06, Helen ’08, Chairs of the BPFA Welcome Committee
hoffer4@charter.net

The Bates Web site for parents:
www.bates.edu/for-parents.xml



6 CONTACTING BATES

8 BEING INVOLVED *Parents and Families At Bates*

10 VISITING CAMPUS *We Welcome You*

- 10 Events
- 11 Tips for Visiting
- 12 Accommodations
- 16 Dining and Shopping
- 22 Campus Events
- 22 The Great Outdoors
- 22 Religious Worship

23 STAYING CONNECTED *How to Keep in Touch*

- 23 Reaching Your Student
- 24 Thoughtful Touches
- 24 Keeping Current

26 ACADEMIC LIFE *The Heart of the Matter*

- 29 Grades
- 30 FERPA
- 30 Academic Standing
- 31 Academic Advising
- 31 Registration Overview
- 32 Short Term
- 32 Off-Campus Study
- 33 Leaves of Absence

34 STUDENT SERVICES *We Are Here to Help*

44 RESIDENTIAL LIFE *Beyond the Classroom*

- 44 Construction on Campus
- 44 Housing at Bates
- 48 Meal Plans
- 48 Cars and Parking
- 48 Extracurricular Life
- 49 Student Identification Cards

50 SOCIAL CONDUCT *The Way Life Should Be*

52 MONEY MATTERS

55 BATES COLLEGE HISTORY

56 INDEX

58 CAMPUS MAP

CONTACTING BATES

Concierge (Switchboard and Campus Information) 207-786-6255
CAMPUS EMERGENCY 207-786-6111

President's Office

Elaine T. Hansen, President *ehansen@bates.edu* 207-786-6100

Security and Campus Safety

Thomas P. Carey '73, Director *tcarey@bates.edu* 207-786-6254

Parents & Family Association

Christina Wellington Traister '94, Director *parents@bates.edu* 207-786-8370

Student Affairs

Tedd R. Goundie, Dean of Students *tgroundie@bates.edu* 207-786-6219

Holly L. Gurney, Associate Dean: *hgurney@bates.edu* 207-786-6220

First-Year Students

James L. Reese, Associate Dean: *jreese@bates.edu* 207-786-6222

Multicultural and International Students

Stephen W. Sawyer, Associate Dean: *ssawyer@bates.edu* 207-786-6223

Study Abroad

Roland S. Davis '92, Assistant Dean: *rdavis@bates.edu* 207-786-6220

Sophomore Students

Keith M. Tannenbaum, Assistant Dean: *ktannenb@bates.edu* 207-786-6305

Student Activities

Erin Foster Zsiga, Assistant Dean: *efoster@bates.edu* 207-786-6215

Housing, ATOD Educator

Student Services

Career Services

A. Charles Kovacs, Director *ckovacs@bates.edu* 207-786-6232

Chaplain's Office

William Blaine-Wallace, *wblainew@bates.edu* 207-753-6906

Multifaith Chaplain

College Store

bookstore@bates.edu 207-786-6121

Computer Sales

computer_sales@bates.edu 207-786-6376

Computing Help Desk

helpdesk@bates.edu 207-786-8222

Dining Services

Christine Schwartz, Director *cschwartz@bates.edu* 207-786-6300

Health Center

Christy P. Tisdale, Health Services Director *ctisdale@bates.edu* 207-786-6199

Housing

Erin Foster Zsiga, Director of Housing *housing@bates.edu* 207-786-6215

Ladd Library

Eugene L. Wiemers, *library@bates.edu* 207-786-6264

Vice President for Information Services
and Librarian

Multicultural Affairs/Multicultural Center

Czerny Brasuell, Director *cbrasuel@bates.edu* 207-786-8215

Post Office

207-786-6104

CONTACTING BATES

Registrar and Academic Systems

Mary Meserve,
Interim Registrar

registrar@bates.edu 207-755-5949
www.bates.edu/registrar

Student Employment Office

seo@bates.edu 207-786-6303

Student Financial Services

Wendy Glass,
Interim Director of Student Financial
Services

findaid@bates.edu 207-786-6096
finoff@bates.edu
www.bates.edu/sfs

Student Volunteer Office

Martha S. Deschaines '75

207-786-8351

Writing Workshop

Joyce Seligman, Director

207-786-6159

Campus Facilities

Museum of Art

Mark H. C. Bessire, Director

museum@bates.edu 207-786-6158

Olin Arts Center

Information

207-786-6135

Physical Education/Athletics

Kevin McHugh, Director of Athletics
Bates Sports Results

kmchugh@bates.edu 207-786-6341
www.bates.edu/sports

Alumni Gymnasium (volleyball, basketball)

207-786-6341

Davis Fitness Center at Underhill Arena

207-786-8261

Merrill Gymnasium (track and field, tennis, swimming)

207-786-6366

Underhill Arena (hockey, skating)

207-786-8260

Schaeffer Theatre Box Office

207-786-6161

Administrative Offices

Academic Affairs

Jill N. Reich, Dean and Vice President for
Academic Affairs

jreich@bates.edu 207-753-6952

Admissions Office

Wylie L. Mitchell, Dean

admissions@bates.edu 207-786-6000

Affirmative Action Office

Joanna E. Boley-Lee, Interim Director

jlee3@bates.edu 207-786-6031

Alumni and Parent Programs

Kimberly A. Hokanson, Director

khokanso@bates.edu 207-786-6244

College Advancement Office

207-786-6247

External Affairs

William C. Hiss '66, Vice President

whiss@bates.edu 207-786-8254

BEING INVOLVED

Parents and Families at Bates

THE BATES PARENTS & FAMILY ASSOCIATION

You have always been involved in the daily life of your son or daughter. Do you wish to remain involved even while they are on campus, perhaps hundreds of miles away? You know Bates is doing extraordinary things for your son or daughter — but did you know Bates needs you in order to sustain this? Did you know there are volunteer opportunities for you that will help the College, help the Bates community, of which you are a part, and help your child?

All parents and guardians of current Bates students are members of the Bates College Parents & Family Association (BPFA) and are invited to volunteer to take part in its activities. The Association includes volunteer programs in the offices of Advancement, Admissions and Career Services. It facilitates greater and more open communication between families and the College. For more information about any of the programs described below, please call the Parents & Family Association Office at 207-786-8370 or e-mail parents@bates.edu.

Communications Committee

The Communications Committee was established to help the BPFA Office enhance publications for parents and materials from the College. Committee members review publications such as the *Parents & Family Handbook* and *For Parents*, the gateway on the Bates Web site (www.bates.edu/for-parents.xml). Their feedback has also been solicited for pieces in *Bates Magazine* and for letters and other mailings to Bates parents. Much of this committee's collaborative work is done via conference call and e-mail.

Bates Parents Fund Committee

The Bates Parents Fund is a fundraising campaign conducted by the College from July 1 to June 30 each year. It is a critical component of the overall Bates Fund, which raises annual unrestricted dollars from alumni, parents, friends, corporations and foundations in support of Bates' educational programs. Contributions to the Parents Fund help the College meet current expenses for the essentials that make a Bates education one of the best in the nation.

The Parents Fund Committee helps increase the funds raised each year by providing philanthropic leadership and fostering supportive relationships between the College and parents. Committee members focus on personally contacting current and past parents and grandparents throughout the fiscal year to help the College gain their vital support. The BPFA Office provides all the necessary materials and assistance to reach out to fellow parents. Volunteers for the 2006–2007 Bates Parents Fund helped raise more than \$925,000.

Welcome Committee

The Welcome Committee assists with several important programs while enabling volunteers to meet and interact with new families. Members make phone calls welcoming families of incoming students to the Bates community, answering questions and providing helpful tips. The BPFA Office provides call sheets, matching volunteers to new families in their geographical area whenever possible. This year, volunteers will welcome nearly 500 families — you may be one of them!

Welcome Committee work also includes parent involvement in special events such as Orientation, Parents & Family Weekend and incoming-student receptions. Parent volunteers and their students may enjoy staffing a welcome table to answer questions, educating or recruiting new parent volunteers, hosting or attending a reception in their hometown.

Additional Programs

Many Bates parents and alumni participate in volunteer programs through the offices of Admissions and Career Services. Volunteers from across the country work with Admissions by representing Bates at local college fairs and by hosting regional receptions for prospective students. They are also valued members of the Career Advisory Network, forwarding employment and entry-level job information to the College, sponsoring interns in their places of employment or sharing career insights with students and young alumni. Participation in career discussion panels is also welcomed. If you're interested in volunteering for any of these programs, please contact the offices of Admissions (207-786-6000) and Career Services (207-786-6232 or www.bates.edu/career) or call the BPFA Office.



BPFA Helpful Hints: A Parent's To Do List

- ✓ Make reservations early for campus visits and big campus weekends!
- ✓ Subscribe to *The Bates Student* newspaper or create an account online at www.batesstudent.com.
- ✓ Attend Orientation for Students and Parents — Sept. 1, 2007.
- ✓ Attend a regional Bates event and meet other parents and alumni.
See community.bates.edu/events.
- ✓ Send a birthday cake or “care package” to Bates (see Bakeries, p. 24).

VISITING CAMPUS

We Welcome You

EVENTS

Bates looks forward to seeing you on campus throughout the year and welcomes you to visit any time. For the following special events, please keep in mind that hotel rooms in Lewiston-Auburn need to be reserved early. Please refer to the list on pages 12–16 and on the Bates Web site.

New Student Orientation

September 1, 2007

The schedule includes events, seminars and activities to welcome you and your student to campus and to make the process of moving your student to Bates as easy and informative as possible. Students also have an opportunity to set up a bank account, register to vote and apply for on-campus jobs at this time. Parent volunteers will be available to welcome newcomers and answer questions.

Parents & Family Weekend

September 28-30, 2007

This weekend brings parents and families to campus at one of the loveliest times of the year. The College plans a broad array of activities and events: parents can sit in on classes, attend sporting events and concerts, theater and dance performances, and enjoy family time amid the glowing autumn colors. Invitations are mailed in late summer, and a schedule of events will be posted on the Bates Web site at www.bates.edu/for-parents.

Parents & Family Weekend dates from 2007 through 2009:

Sept. 28–30, 2007 Oct. 3–5, 2008 Oct. 2–4, 2009

Commencement

This is a very important time in the lives of graduating students and their families. The College is bustling with activities, including the student-designed Baccalaureate service, receptions and honor ceremonies, the senior formal and the Commencement exercises, all of which capture the historical, ceremonial and traditional elements of this memorable weekend.

Parents receive invitations to Commencement in April. Students may pick up additional invitations on campus before Short Term begins. No tickets are required for any part of the weekend, and families and guests are most welcome. An updated schedule of weekend events is posted on the College Web site each spring.

Commencement dates are:

Class of 2008
Sunday, May 25, 2008

Class of 2010
Sunday, May 30, 2010

Class of 2009
Sunday, May 31, 2009

Class of 2011
Sunday, May 29, 2011

INSIDER TIPS

Arrive the Thursday before Parents & Family Weekend to attend Friday classes (with or without your son or daughter)

Get the most out of Parents Weekend: go to a class. Talk to other parents. Talk to your child about an organized dinner with other families. Plan to attend the BPFA meeting Sunday.

TIPS FOR VISITING

Here are some tips to help you be as prepared and comfortable as possible when you come to visit campus and/or tour Maine:

Reservations

Make reservations for dining and overnight accommodations as early as you can. Local lodgings and restaurants fill up quickly, particularly during Parents & Family and Commencement weekends.

For listings of local restaurants and overnight accommodations, visit www.LAItsHappening-Here.com, www.freeportusa.com or www.visitportland.com. Some popular establishments are listed here on pages 12–20.

Weather

Keep in mind something that longtime Mainers say: “If you don’t like the weather, wait five minutes.” Link to today’s local weather and a week’s forecast for the region by visiting www.bates.edu/maine-links.xml so that you’ll be prepared.

The days around Orientation and Commencement can be warm and muggy, but the evenings are usually cool. Pack lighter-weight clothing for daytime and something more substantial for evening. The weather during Parents & Family Weekend in early fall can be brisk. Be sure to bring a sweater, light coat and long pants.

INSIDER TIP

If you haven’t been to Maine for a few years, be aware that Maine Turnpike exit numbers have changed and now reflect each exit’s distance in miles from York. In addition, the former Interstate 495 that previously connected Scarborough through Lewiston to Gardiner now retains the I-95 designation. In short: Travelers to Bates from the south should remain on I-95 straight to Exit 80, Lewiston.

Travel Information

Winter travel to campus is most easy and comfortable via the Maine Turnpike, I-95. Travelers can follow this well-maintained stretch of highway from Maine’s southern border right to Lewiston. As with travel anywhere in inclement weather, take the appropriate precautions to make sure that you reach your destination safely.

For Maine Turnpike travel conditions, call ahead to 800-675-7453. From the road, tune your radio to AM-1610 for regular travel updates along the way. For Massachusetts Pike information, call 800-828-9104.

Directions to Campus

Motorists should leave Turnpike at Exit 80. Northbound travelers turn left onto Alfred A. Plourde Parkway at the end of the off-ramp, while southbound travelers bear right onto Plourde. Continue on Plourde straight to stoplight at intersection of Plourde and Pleasant; continue on Plourde six-tenths of a mile to stoplight at Webster Street. Turn left onto Webster and travel one mile to stoplight at Farwell Street. Turn right onto Farwell and follow six-tenths of a mile to stoplight. Continue straight across intersection onto Russell Street. Russell Street forms the northeast border of campus. The College is will be on your left.

VISITING CAMPUS

Transportation to and from the local airports:

Mermaid Transportation

800-696-2463 • www.gomermaid.com

(Ask about the College Express and special Bates fares and Bates-date schedules)

Concord Trailways

800-639-3317 • www.concordtrailways.com/maine_bus_schedule.htm

(Service between Portland and Boston's Logan Airport)

Greyhound Bus Lines (Vermont Transit)

207-782-0311 • www.greyhound.com/home.asp

(Service between Boston, Portland and Lewiston, among other locations)

Excalibur Limousine

800-317-8256

ACCOMMODATIONS

Below is a partial list of lodgings in Lewiston-Auburn and surrounding areas. Lodgings do fill up on busy College weekends, so book ahead. See a more comprehensive list at www.bates.edu/area-accommodations.xml.

 Indicates pets are welcome. Call for limitations.

Lewiston-Auburn Region

Armand's Orchard Side Inn

16 Pinewoods Road, Lewiston (12 min.)

207-221-6361

www.armandsorcharchsideinn.com

Fireside Inn and Suites

1777 Washington St., Auburn

207-777-7773

www.firesideinnauburn.com

Chalet Motel

1243 Lisbon St., Lewiston

207-784-0600

www.chaletmotel.net

Hilton Garden Inn Auburn Riverwatch

14 Great Falls Plaza, Auburn

207-784-4433

Chandler House Bed & Breakfast

337 Intervale Road (Route 231), New Gloucester

207-926-5502

www.chandlerhouse-bedandbreakfast.com

Maine Motel & Cabins

1101 Main St., Lewiston

207-784-7925 or 800-287-7925

www.mainemotelandcabins.com

EconoLodge

170 Center St., Auburn (6 min.)

207-784-1331 or 877-263-0646

www.choicehotels.com/hotel/ME051

Morrill Farm Bed & Breakfast

85 Morrill Farm Road, Sumner (1 hour)

207-388-2059

www.bbonline.com/me/morrillfarm/

Motel 6 🏠

516 Pleasant St., Lewiston
207-782-6558 or 800-466-8356

Poland Spring Resort

41 Ricker Road, Poland Spring
207-998-4351
www.polandspringinns.com

Ramada Inn

490 Pleasant St., Lewiston
207-784-2331

Royalsborough Inn at the Bagley House 🏠

1290 Royalsborough Road, Durham
207-865-6566 or 800-765-1772
www.royalsboroughinn.com

Super 8

1440 Lisbon St., Lewiston
207-784-8882

Ware Street Inn (B&B)

52 Ware St., Lewiston
207-783-8171 or 877-783-8171
www.warestreetinn.com

Wolf Cove Inn Bed & Breakfast

5 Jordan Shore Drive, Poland
207-998-4976
www.wolfcoveinn.com

**Bath, Brunswick and Freeport**

Applewood Inn

8 Holbrook St., Freeport
207-865-9705 or 877-954-1358
www.applewoodusa.com

Atlantic Seal Bed & Breakfast

Main Street, Box 146
South Freeport
207-865-6112

Best Western Freeport Inn 🏠

335 U.S. Route 1 South, Freeport
207-865-3106
www.freeportinn.com

Comfort Inn

199 Pleasant St., Brunswick
207-729-1129 or 800-228-5150
www.comfortinn.com

Comfort Suites

500 U.S. Route 1, Freeport
207-865-9300 or 877-865-9300
www.FreeportComfortSuites.com

Country Inn (B&B)

Route 1, Brunswick
207-729-1359

VISITING CAMPUS

Eagle Motel

291 US Route 1 South, Freeport
207-865-4088

Econo Lodge

Routes 1 and 95, Brunswick
207-729-9991 or 800-654-9991
www.choicehotels.com

Fairhaven Inn (B&B)

118 North Bath Road, Bath
207-443-4391 or 888-443-4391
www.maineoast.com/fairhaveninn

Freeport Clipper Inn B&B

181 Main St., Freeport
207-865-9623
www.freeportclipperinn.com

Hampton Inn 🏠

194 Lower Main St., Freeport
207-865-1400
www.freeporthamptoninn.com

Harpswell Inn Bed & Breakfast 🏠

Route 123, Harpswell (1 hour)
207-833-5509 or 888-355-4756
www.harpswellinn.com

Harraseeket Inn 🏠

162 Main St., Freeport (38 min.)
207-865-9377 or 800-342-6423
www.stayfreeport.com

Hilton Garden Inn Freeport

5 Park St., Freeport (36 min.)
207-865-1433
hiltongardeninn.hilton.com

Holiday Inn Express

450 U.S. Route 1, Freeport (38 min.)
207-865-9020
www.holidayinn.com

James Place Inn

11 Holbrook St., Freeport (39 min.)
207-865-4486 or 800-964-9086
www.jamesplaceinn.com

Kendall Tavern Bed & Breakfast

213 Main St., Freeport (38 min.)
800-341-9572 or 207-865-1338
www.kendalltavern.com
info@kendalltavern.com

Maine Idyll Motor Court

325 US Route 1 North, Freeport (40 min.)
207-865-4201
www.freeportusa.com/freeportmember106.html

Maple Hill (B&B)

18 Maple Ave., Freeport (38 min.)
207-865-3730 or 800-867-0478
www.maplehillbedandbreakfast.com

The Parkwood Inn

Cook's Corner, Brunswick (40 min.)
207-725-5251 or 800-349-7181
www.parkwoodinn.com

Super 8 Motel—Cooks Corner

224 Bath Road, Brunswick (43 min.)
207-725-8883 or 800-800-8000
www.super8.com

Super 8 Motel—Freeport

506 U.S. Route 1, Freeport
207-865-1408 or 800-800-8000
www.super8.com

Travelers Inn

Routes 1 and 95, Brunswick (40 min.)
207-729-3364 or 800-457-3364
www.travelersinnme.com

Travelodge Atrium 🏠

Cooks Corner, Brunswick (40 min.)
207-729-5555

White Cedar Inn 🏠

178 Main St., Freeport (38 min.)
207-865-9099 or 800-853-1269
www.whitecedarinn.com

Portland and South Portland

Best Western Merry Manor Inn 🏨
700 Main St., South Portland (46 min.)
207-774-6151 or 800-WESTERN
www.bestwestern.com/merrymanorinn

Comfort Inn Airport 🏨
90 Maine Mall Road, South Portland (43 min.)
207-775-0409 or 800-368-6485
www.comfortinn.com

Doubletree Hotel 🏨
1230 Congress St., Portland (46 min.)
207-774-5611
www.doubletree.com

Eastland Park Hotel 🏨
157 High St., Portland (49 min.)
207-775-5411
www.eastlandparkhotel.com

Econo Lodge
80 John Roberts Road, South Portland (47 min.)
207-772-3838
www.econolodge.com

Embassy Suites
1050 Westbrook St., Portland (45 min.)
207-775-2200 or 800-753-8767
www.embassysuitesportland.com

Fairfield Inn Portland Airport
340 Park Ave., Portland (47 min.)
207-871-0611
www.fairfieldinn.com

Hampton Inn 🏨
171 Philbrook Road, Portland (50 min.)
207-773-4400 or 800-426-7866
www.hamptoninn.com

Hilton Garden Inn Portland Airport
145 Jetport Blvd., South Portland (47 min.)
800-246-8357

Holiday Inn by the Bay
88 Spring St., Portland (49 min.)
207-775-2311
www.holidayinn.com

Holiday Inn Portland West 🏨
81 Riverside St., Portland (40 min.)
207-774-5601
www.holidayinn.com

Howard Johnson Plaza Hotel 🏨
155 Riverside St., Portland (41 min.)
207-774-5861
www.hojoportland.com

Howard Johnson Plaza Hotel 🏨
675 Main St., South Portland (46 min.)
207-775-5343
www.hoyo.com

Marriott at Sable Oaks 🏨
200 Sable Oaks Drive, South Portland (45 min.)
207-871-8000
www.marriott.com

Motel 6 🏨
1 Riverside St., Portland (40 min.)
207-775-0111
www.motel6.com

Portland Harbor Hotel
468 Fore St., Portland
207-775-9090 or 888-798-9090
www.portlandharborhotel.com

Portland Regency Hotel
20 Milk St., Portland (50 min.)
207-774-4200
www.theregency.com

Quality Inn
738 Main St., South Portland (46 min.)
207-774-5891
www.QualityInn.com

Sheraton South Portland 🏨
363 Maine Mall Road, South Portland
800-246-8357

VISITING CAMPUS

Augusta Area

America's Best Inn

65 Whitten Road, Augusta (45 min.)
207-622-3776
www.bestinnmaine.com

Best Western Senator Inn

Western Ave., Augusta (44 min.)
207-622-5804
www.senatorinn.com

Comfort Inn Civic Center

281 Civic Center Drive, Augusta (48 min.)
207-623-1000
www.comfortinn.com

Econo Lodge Inn & Suites

390 Western Ave, Augusta (45 min.)
207-622-6341
www.augustaeconolodge.com

Holiday Inn

110 Community Drive, Augusta (47 min.)
207-622-4751
www.holidayinn.com

Maple Hill Farm Bed & Breakfast

R.R. 1, Box 1145, Outlet Road, Hallowell
(50 min.)
207-622-2708 or 800-622-2708
www.maplebb.com

Super 8 Motel

395 Western Ave., Augusta (45 min.)
207-626-2888
www.super8.com

Susse Chalet Motor Lodge

Whitten Road, Augusta (46 min.)
207-622-3776

Casco Area

Alyssa's Motel

On Thomas Pond, 11 Roosevelt Trail (Route 302), Casco (53 min.)
207-655-2223
www.alyssasmotel.com

DINING AND SHOPPING

In addition to restaurants and shops in the Lewiston-Auburn area, there are many more in downtown Portland, about an hour from campus. Portland's Old Port district is a vibrant center where visitors enjoy diverse dining, eclectic shops and a working waterfront.

Freeport, home of legendary retailer L.L. Bean, is just 25 minutes from campus and offers a variety of dining and shopping possibilities.

Eateries frequented by Bates students, faculty and staff are listed below, and a more comprehensive list appears on the Bates Web site at www.bates.edu/for-parents.xml.

Lewiston-Auburn Area

Applebees

599 Center St., Auburn
207-784-3986

Bagels and Things

213 Center St., Auburn
207-782-4426

Cathay Hut

1134 Lisbon St., Lewiston
207-783-7321

Chopsticks

37 Park St., Lewiston
207-783-6300 or 783-6949



VISITING CAMPUS

DaVinci's Eatery

Bates Mill Complex
150 Mill St., Lewiston
207-782-2088
www.davinciseatery.com

Dore's Café and Market

20 Union St., Auburn
207-777-7001

Espo's Trattoria

134 Main St., Lewiston
207-783-6200

Fish Bones American Grill

70 Lincoln St., Lewiston
207-333-3663

Fuel

49 Lisbon St., Lewiston
207-333-3835

Graziano's Casa Mia

Main St., Lisbon
207-353-4335

Gritty McDuff's

68 Main St., Auburn
207-376-2739

Holly's Own Deli

84 Court St., Auburn
207-333-3041

Hurricane's Café & Deli

682 Route 202, Greene
207-946-DELI (3354)
www.hurricanedeli.com/

Little Dan's BBQ

757 Main St., Lewiston
207-333-3227
www.littledansbbq.com

LongHorn Steakhouse

649 Turner St., Auburn
207-784-1807

Mac's Grill

1052 Minot Ave., Auburn
207-783-6885
www.macsgrill.com

Nezinscot Farm

284 Turner Center Road, Turner
207-225-3231
www.nezinscotfarm.com

Ninety Nine

650 Center St., Auburn
207-784-9499

Nothing But the Blues Café

81 College St., Lewiston
207-784-6493

Pat's Pizza

85 Center St., Auburn
207-784-8221

Pepper and Spice

875 Lisbon St., Lewiston
207-782-7526

Ruby Tuesday

649 Turner St. Auburn
207-753-0518

Sedgley Place

54 Sedgley Road, Greene
207-946-5990
www.sedgleyplace.com

Simones' Hot Dog Stand

99 Chestnut St., Lewiston
207-782-8431
(Say hello to owners Jimmy and Linda Simones, parents of Melissa '06!)

Texas Barbeque Co.

945 Center St., Auburn
207-376-3287
www.texasbarbequeco.com

T.G.I. Friday's

649 Turner St., Auburn
207-786-7635

Thai Dish

220 Court St., Auburn
207-777-3499

Wei-Li Chinese Restaurant

945 Center St., Auburn
207-344-0022

Thai Jarearn Express

65 College St., Lewiston
207-786-3653

Freeport Area

Azure Italian Café

123 Main St., Freeport
207-865-1237
www.azurecafe.com

Harraseeket Lunch & Lobster Co.

Main St., South Freeport
207-865-4888

Broadway Delicatessen

142 Main St., Freeport
207-729-7781

Isabella's Café

2 School St., Freeport
207-865-6635
www.artisticcats.com

China Rose Restaurant

23 Main St., Freeport
207-865-6886

Jameson Tavern

115 Main St., Freeport
207-865-4196

Conundrum Wine Bistro

117 U.S. Route 1, Freeport
207-865-0303

Lobster Cooker

39 Main St., Freeport
207-865-4349

Gritty McDuff's

187 U.S. Route 1, Freeport
207-865-4321

Miyako

23 Main St., Freeport
207-865-6888

Harraseeket Inn

The Maine Dining Room and
the Broad Arrow Tavern
162 Main St., Freeport
207-865-9377

Pedro O'Hara's Irish Pub and Mexican Cantina

175 Lower Main St., Freeport
207-865-4005
www.pedrooharas.com

Brunswick Area

Captain Daniel Stone Inn

10 Water St., Brunswick
207-725-9898 or 877-573-5151

Great Impasta

42 Maine St., Brunswick
207-729-5858

Bombay Mahal

99 Maine St., Brunswick
207-729-5260

Henry & Marty

47 Maine St., Brunswick
207-721-9141

El Camino Cantina

15 Cushing St., Brunswick
207-725-8228

MJ's Grille & Tavern

94 Maine St., Brunswick
207-729-6574

VISITING CAMPUS

Old Munich Restaurant Café & Biergarten
6 First St., Topsham
207-729-1688
www.oldmunich.us/index.html

Pedro O'Hara's Irish Pub and Mexican Cantina
1 Center St., Brunswick
207-373-1300
www.pedrooharas.com

Richard's Restaurant
114 Maine St., Brunswick
207-729-9673

Scarlet Begonias
212B Maine St., Brunswick
207-721-0403

Sea Dog Brewery
Great Bowdoin Mill
1 Main St., Topsham
207-725-0162

Shopping Centers and Department Stores

Auburn Mall
550 Center St., Auburn
207-786-2977
www.auburnmall.com

Best Buy
649 Turner St., Auburn
207-795-8810

K-Mart
603 Center St., Auburn
207-784-2911

Home Depot
140 Mount Auburn Ave., Auburn
207-777-0042

Kohl's Department Store
Mount Auburn Plaza
105 Mount Auburn Ave., Auburn
207-777-1434

Lewiston Mall
East Ave., Lewiston
207-743-4701

Lowe's Home Improvement
Mount Auburn Plaza
650 Turner St., Auburn
207-514-2300

Wal-Mart Super Center
100 Mount Auburn Ave., Auburn
207-784-0738

Groceries/Markets

Axis Natural Food
250 Center St., Auburn
207-782-3348

Bourque's Market
644 Sabattus St., Lewiston
782-1385

Hannaford
95 Spring St., Auburn
207-784-6497

692 Sabattus St., Lewiston
207-784-0721

Shaw's Supermarket
600 Center St., Auburn
207-784-6971

27 East Ave., Lewiston Crossing
207-784-6900

Pharmacies

Bedard Pharmacy

61 College St., Lewiston
207-786-0138 or 888-233-2737

CVS

10 East Ave., Lewiston
207-783-8371

8 Union St., Auburn
207-753-6070

Medicine Shoppe

373 Sabattus St., Lewiston
207-783-3539 or 800-483-3539

Rite Aid

315 Main St., Lewiston
207-784-9588

430 Sabattus St.
Lewiston
207-783-2013

For more information on things to do when you're visiting Bates and the great state of Maine, go to <http://www.androscoggincounty.com/visitor/index.html>, www.visitmaine.com, www.visitportland.com or www.freeportusa.com.

Automobile Repair

Bates faculty and staff recommend the following garages near campus for minor repairs. In addition, dealerships in Auburn can handle larger or specialized problems. Most of the dealerships are located on Center Street (Route 4) in Auburn (take a right onto Center Street after crossing the Androscoggin River via the Memorial Bridge).

Berube's Car Wash &

Exxon Service Station

147 East Ave., Lewiston
207-782-1125

Certified Mechanics

1297 Sabattus St., Lewiston
207-786-3541 or 877-255-3217

Grimmel's Service Station

681 Lisbon St., Lewiston
207-782-9160



Storage Facilities

Auburn Storage Solutions

905 Washington St. (Route 202 N), Auburn
207-777-3277

Merrill Road Self Storage

(special prices for Bates students)
Auburn and Lewiston locations
207-784-2483

U-Haul Storage

541 Center St., Auburn
207-784-5706

VISITING CAMPUS

CAMPUS EVENTS

For dates, times and locations of Bates events, please visit our Web site at www.bates.edu/calendars. Here you will find complete listings of musical and theatrical performances, art exhibitions, lectures and athletic competitions, the academic calendar and off-campus events for parents and alumni.

THE GREAT OUTDOORS

Maine is famous for its natural beauty and great opportunities for outdoor exploration and recreation. The region around the College offers much to do and see. Some local favorites include the Bradbury Mountain, Popham Beach, Reid and Range (pronounced “rang”) Pond state parks, as well as Lost Valley Ski Area and the Thorncrag Bird Sanctuary. Visit www.visitmaine.com to find detailed information about activities and places to visit along the coast, in the mountains and around the lakes.

RELIGIOUS WORSHIP

The Bates community and the Lewiston-Auburn area offer many opportunities for worship, prayer and reflection. Local places of worship represent a large number of faith traditions: Advent Christian • Assemblies of God • Baha’i • Baptist • Church of the Brethren • Church of Christ • Church of God • Christian Science • Congregational/United Church of Christ • Episcopal • Greek Orthodox • Independent Fundamentalist • Jehovah’s Witness • Jewish • Lutheran • Methodist • Muslim • Nazarene • Nondenominational • Pentecostal • Presbyterian • Quaker • Roman Catholic • Seventh-Day Adventist • Unitarian-Universalist.



On campus, in addition to the College Chapel, there are three dedicated spaces for worship within the Multicultural Center, 63 Campus Ave. The Muslim prayer room is on the first floor, and the Hindu and Buddhist shrines on the second. Students from these faith traditions decide on the arrangement of the rooms and plan any religious observances. Please contact the director of Multicultural Affairs at 207-786-8215 for more information.

For specific information about locations, addresses and times of services, or if your faith tradition is not represented, please contact the Bates Office of the Multifaith Chaplain at 207-786-8272 or visit the Bates Web site at abacus.bates.edu/admin/offices/chaplain/.

STAYING CONNECTED

How to Keep in Touch

REACHING YOUR STUDENT

Telephone

The College concierge can be reached at 207-786-6255 from 7:30 a.m. to 10 p.m. Monday through Friday and noon to 4 p.m. weekends while the College is in session. The phone number of the Office of Security and Campus Safety is 207-786-6254, or in an emergency, 207-786-6111. The phone number of the Office of the Dean of Students is 207-786-6222.

Bates provides a telephone with voicemail in each dorm room. This phone allows on-campus and local calling at no charge. Outgoing long-distance calls may be placed using a pre-paid calling card.

To reach your student, simply dial 1+207 (Maine's area code, if calling from out of state or out of the local calling area), then his or her assigned seven-digit phone number. Calls made on campus, from one office or dorm room to another, require only the last four digits.

International callers, please dial your local international access code number, then 1+207, then your student's assigned seven-digit phone number or the number for the department that you wish to reach.

Postal Mail

Every student, whether living on or off campus, is assigned a mailbox number at the College. The Campus Post Office is open from 10:30 a.m. to 3:30 p.m. Monday through Friday and 10 a.m. to noon Saturdays. All mail or packages delivered by the U.S. Postal Service or package-delivery services (such as UPS or Federal Express) should be addressed as follows:

[Student's name]
[Student's box number], Bates College
Lewiston, ME 04240-6094

There's no need to use the word "box" with the box number. For example:

Marianne Cowan
544 Bates College
Lewiston, ME 04240-6094

Packages sent before the beginning of fall semester should be sent to the Physical Plant Office. They should be addressed as follows:

[Student's Name and Box Number]
c/o Bates College Physical Plant
147 Russell St.
Lewiston, ME 04240-6050

Again, please don't use the word "box."
For example:



STAYING CONNECTED

Marianne Cowan, 544
c/o Bates College Physical Plant
147 Russell St.
Lewiston, ME 04240-6050

Overnight mail to students is delivered to the Campus Post Office during the week and to the Security Office on Saturdays.

THOUGHTFUL TOUCHES

To send something for a special occasion, to celebrate a job well-done or just because:

Florists

Always Blooming
18 Highland Spring Road, Lewiston
207-782-1557 or 800-222-0756

Plantasia Florals
144 Main St., Auburn
207-784-1313

Blais Flower and Gift Shop
539 Webster St., Lewiston
207-783-8566 or 800-783-8568

Roak the Florist
793 Main St., Lewiston
207-784-4061 or 800-640-7625
www.roaktheflorist.com

Bakeries

Bates College Dining Services
Donald Desrosiers, Catering Manager
207-786-6298 or d-desrosi@bates.edu
www.bates.edu/dining-catering.xml

Heather's Bakery
1056 Center St., Auburn
207-783-7100

Grant's Bakery
525 Sabattus St., Lewiston
207-783-2226
www.grantsbakery.com

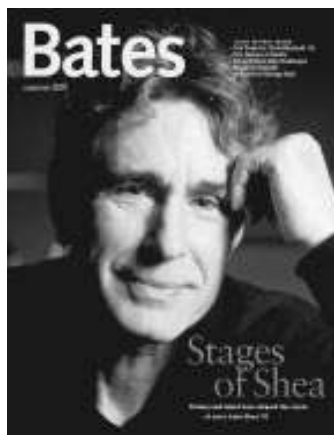
Italian Bakery Products
225 Bartlett St., Lewiston
207-782-8312

KEEPING CURRENT

We encourage you to keep up with the College through its publications and award-winning Web site, www.bates.edu. In addition, you can access local news and information daily by going to the *Lewiston Sun Journal* Web site, www.sunjournal.com.

Bates Magazine

Our College magazine includes interesting and informative profiles, stories and columns about Bates and Bates people. All Bates parents receive *Bates Magazine* and other signature publications.





www.bates.edu

Our Web site is your ready source for current information on campus events, sports, admissions, advancement, academic news, the library and much more.

The Bates Student

Founded in 1873, the campus newspaper is written, edited, photographed and designed by students. For subscription information please call 207-795-7494. The *Student* is also published on-line at www.batesstudent.com.

Local Bates Clubs

Bates Clubs sponsor regional events for Bates parents and alumni and are a great way to stay in touch with Bates. Throughout the year, events include receptions with members of the Bates faculty, President Hansen or other members of the administration; gatherings with athletics department staff, parents, alumni and athletes at sporting events; local service projects; and welcoming receptions for incoming students and their parents. For information on Bates Club events near you, please contact the Parents & Family Association Office at 207-786-8370 or parents@bates.edu.

Suggested Reading

Don't Tell Me What to Do, Just Send Money: The Essential Parenting Guide to the College Years

By Helen E. Johnson and Christine Schelhas-Miller (St. Martin's Press, 2000)

Letting Go: A Parent's Guide to Today's College Experience

By Karen Levin Coburn and Madge Lawrence Treeger (HarperCollins, 2003)

A Parent's Guide to Sex, Drugs and Flunking Out: Answers to Questions Your College Student Doesn't Want You to Ask

By Joel Epstein (Hazelden Publishing & Educational Services, 2001)

You're on Your Own (But I'm Here If You Need Me): Mentoring Your Child Through the College Years

By Marjorie Savage (Simon and Schuster, 2003)

ACADEMIC LIFE AT BATES

“The highest purpose of Bates College is to provide a community with sufficient challenge and sufficient support so that the undergraduate may mature in scholarship and in capacity for critical thinking and civilized expression. The graduate is more knowledgeable, to be sure, but above all he or she is capable of a reflective understanding of the self and its relationship to prior traditions and present environments.”

— *Committee on Educational Policy*

INSIDER TIP

The sooner your student begins getting to know the deans and his or her advisors and professors, the better. Those people can be most helpful. Moreover, the better they know your student, the easier it will be for them to write complete, detailed and effective letters of recommendation, and to provide support in times of need.

General Education Requirements

Bates’ General Education Requirements help students gain a broad understanding of the liberal arts by taking courses in many disciplines. The requirements are described in detail in the “Academic Program” section of the *Bates College Catalog* (available online at abacus.bates.edu/catalog/).

Please note that the General Education requirements have been revised: new requirements are in place for students entering the College in September 2007 as members of the Class of 2011.

Requirements for the Classes of 2008, 2009 and 2010

The requirements for these students are organized around academic disciplines. Students must take a certain number of courses in the humanities, the natural sciences and the social sciences, as well as at least one course that meets the quantitative requirement. Information on the courses offered by each department that fulfill General Education requirements appears in the introductory section of each department’s course listings. Most courses offered in interdisciplinary programs do not fulfill these General Education requirements unless they are cross-listed with departments.

Requirements for the Class of 2011 and Beyond

The requirements for these students are organized around the development of skills and interdisciplinary inquiry. You take courses focused on writing [W1, W2, W3], scientific reasoning [S], quantitative reasoning [Q] and gaining laboratory experience [L]. Bracketed tags indicating that a course meets one or more of these requirements appear in its course description in the *Bates College Catalog*.

In addition, students take two General Education concentrations, groups of four courses arranged around a unifying theme and drawn from course lists developed by the faculty. General Education concentrations are described briefly in the print catalog and in detail in the online catalog.

Advanced Placement and Other Non-Bates Credit

Advanced Placement (AP) credit may be awarded to Bates students based on the official score reported by the College Board (information about Bates’ AP policy appears at www.bates.edu/AP-Policy.xml). The International Baccalaureate and A-Level are among other examinations that may be eligible for non-Bates credit.

Graduation Requirements

The degree requirements may vary slightly for different classes, as well as for three-year students. Four-year degree candidates must meet the requirement of 32 courses, 64 quality points (described below in Grades) and two Short Term units. For no extra cost, students may attend a third Short Term unit. Three-year students must complete 30 courses, 60 quality points and three Short Term units.

You may wish to join us in reminding students that it is ultimately their responsibility to be sure that they meet all requirements for the baccalaureate degree at the appropriate time. They may do so by developing a strong and consistent relationship with their academic advisors. We all seek to avoid last-minute surprises. Students must complete all major, General Education and degree requirements (including physical education activity credits) to participate in the Commencement ceremony.

Thesis

One of the most important components of the Bates curriculum is the senior thesis, which is offered in all departments and programs and required by most. The faculty believes that a Bates senior is well-educated and well-prepared to undertake a significant research, service, performance or studio project in the final year of study in the major. More than 85 percent of each graduating class completes a senior thesis. The traditional senior thesis involves one or two semesters of original research and writing, culminating in a substantial paper on a research topic of the student's design. Such an effort requires that the student possess an excellent understanding of the subject area, its theoretical underpinnings and its research methodology. The student must also be able to think critically and comprehensively about the topic, and must be able to advance a well-formulated argument. Conducting a senior thesis draws on a student's past academic experience and requires considerable independent thinking and creativity, self-discipline and effective time management.

Academic Honors

The College recognizes academic achievement through three kinds of honors: general honors, major-field honors and the Dean's List.

General Honors: There are three levels of general honors, based upon accumulative grade-point average: *cum laude*, *magna cum laude* and *summa cum laude*. General honors levels correspond to the top 2 percent, 8 percent and 15 percent of the combined last three graduating classes. In 2006–2007, students with GPAs of 3.90 or higher earned the distinction of *summa cum laude*; GPAs of 3.77 to 3.89, *magna cum laude*; and GPAs of 3.67 to 3.76, *cum laude*

Major Field Honors: We are proud of our Honors Program, which gives qualified students an opportunity to do extensive independent study and research in their major fields. Honors are awarded for special distinction in the major fields. Honors study is usually carried on throughout the senior year under the guidance of a faculty advisor. Students normally enter the program at the end of the junior year. Students who wish to be nominated to the Honors Program should apply to the chairs of their major departments or programs.

The Honors Program consists of the writing of a substantial thesis and an oral examination on the thesis and the major field. In an alternative offered by some departments, eligible students elect a program consisting of a performance or a project in the creative arts; a



written statement on the project, if requested by the department; a written comprehensive examination, if requested by the department; and an oral examination on the project and on courses in the major. The oral examination committee includes the thesis advisor, members of the major department, at least one faculty member who is not a member of the major department and an examiner from another college or university who specializes in the field of study.

Dean's List: Based on semester grade-point averages, at the conclusion of each semester approximately the top 25 percent of students are named to the Dean's List. To be eligible, students must have completed all course work by the end of the semester and received letter grades in at least three Bates courses. At the start of each academic year, an appropriate GPA level is determined for the inclusion of students on the Dean's List for the ensuing year. This GPA level is computed as the minimum of the top 25 percent of the semester GPAs of all full-time students during the preceding three years. In 2006–2007, for example, a student needed to earn a GPA of 3.66 or higher to be named to the Dean's List.

GRADES

The faculty of the College assesses student academic performance by assigning the following grades: A, B, C, D, plus and minus for each, P and F. Quality-point equivalencies for these grades are described below. Grades are described in greater detail in the *Bates College Catalog*, which appears online at www.bates.edu/catalog and in print upon request from the BPPA Office.

The following values are used in the computation of quality points:

A+ = 4.0	B+ = 3.3	C+ = 2.3	D+ = 1.3	F = 0.0	DEF = 0.0
A = 4.0	B = 3.0	C = 2.0	D = 1.0	F# = 0.0	ON = 0.0
A- = 3.7	B- = 2.7	C- = 1.7	D- = 0.7	P = 2.0	W = 0.0

A student's semester ratio is computed by dividing the total quality points for the semester by the number of courses for which a grade was given.

Students may elect to take courses on a pass/fail basis, with a maximum of one per semester. The following conditions apply:

1. Students may declare or change a pass/fail option up to the final day to add a course.
2. Students taking a course pass/fail are not identified on class rosters. Faculty members submit letter grades for all students to the Registrar. The Registrar will convert such grades to a pass or fail. A grade of D- or above is considered a passing grade. Unless a student wishes to inform the instructor, only the student, the Registrar and the student's advisor know the grading mode for a course.
3. Departments and programs decide whether courses taken pass/fail can be used to satisfy major or secondary concentration requirements.
4. Courses taken pass/fail are not computed in the student's grade point average and do not count towards General Education requirements.

Physical education activity courses are a requirement for graduation and are not graded.

ACADEMIC LIFE

Grades for Short Term units appear on the transcript but do not contribute to quality points and are not computed in the grade-point average. The instructor of each Short Term unit determines whether the grading mode for the units is letter grade, or S (satisfactory) and U (unsatisfactory).

Students may access their final grades online approximately 10 days after the end of final examinations. Grades are not mailed to parents and students. Students are encouraged to share their grades with parents online and may print a paper copy of the grades from the Garnet Gateway, Bates' Web-based records service.

FERPA

Parents may request student academic information if their son or daughter has granted them permission to receive information from the student's educational record. This is a requirement of the Family Educational Rights and Privacy Act (FERPA), the federal student records law. Upon entering the college, all students receive a guarantor/FERPA release form that is kept on file, and if the parent is named as eligible to receive information from the student's educational record, the academic information may be released to the parent.

Passed in 1974, FERPA was designed to protect the privacy of education records, to establish the right of students to inspect and review their education records and to provide guidelines for the correction of inaccurate and misleading data through informal and formal hearings. Students are notified of these rights in the *Bates College Catalog*.

ACADEMIC STANDING

Minimum semester and cumulative grade-point averages (GPA) established by the faculty determine the academic standing of students. All Bates course grades are included in a student's GPA, except for courses taken pass/fail and Short Term units, and on the transcript. However, for the purpose of determining academic standing within the College (good standing, probation, dismissal), first-year grades may not be included in the computation if omitting them will be advantageous to the student. Remember that first-year students must maintain a GPA of 1.5 or above and upper-class students a 2.0 in order to remain in good academic standing.

Academic Standing Committee

This committee has these broad responsibilities:

- To recommend policy to the faculty concerning academic standing, probation and dismissal, and related matters of the grading system;
- To hear on appeal individual cases of students placed on probation or dismissed due to failure to meet legislated criteria for good academic standing;
- To hear petitions for readmission from students once academically dismissed;
- To report statistical summaries concerning academic standing to the faculty after the close of the fall and winter semesters;
- In conjunction with the Educational Policy Committee, to recommend policy to the faculty concerning registrations and the assignment of credit;
- To hear on appeal individual petitions concerning irregular registrations and credits, including underloads, overloads, late registrations, late withdrawals, rescheduled final examinations, deferred course grades, changes in the course grades and transferred credits;

- To review the administrative exercise of duties as delegated by the committee to the dean of students and the associate deans of students according to faculty legislation. Students may submit petitions to the Academic Standing Committee through the Office of the Dean of Students.

ACADEMIC ADVISING

Each Bates student has one or more academic advisors during the college years who provide guidance in planning a curriculum to meet the student's particular needs. New students are assigned academic advisors from the faculty. The advisor holds individual conferences with a student during his or her first week on campus and continues to counsel the student until he or she declares a major.

The major department or program assumes the advising responsibility upon the request of the student — no later than the end of the second year. The student and the advisor meet during registration periods and on an informal basis whenever the student needs advice about the curriculum, course selection, the major program, the thesis, progress toward the degree, graduate school or other academic concerns. While faculty members provide academic advice, final responsibility for course selection and the completion of degree requirements rests with the student.

INSIDER TIP

Your student may want to get to know different faculty members in her or his anticipated department. That's a good way to find the faculty member who would be the best fit for your student to work with.

The registrar provides the student and advisor with an evaluation of the student's progress toward the degree at the end of the junior year. The deans of students can also provide advice on academic matters.

In addition to the academic advisor, faculty committees, the student's major department and the Office of Career Services can provide guidance on graduate and professional schools. The Graduate Fellowships Committee provides general information and supervises the selection process for various graduate fellowships and grants. Students planning professional careers in health-related fields are aided by the Committee on Medical Studies. Students interested in graduate or professional schools are encouraged to contact these committees and the Office of Career Services' counseling staff early in their Bates careers so

that a curriculum and a series of related internships and work experiences can be planned to meet their professional goals.

REGISTRATION OVERVIEW

The course registration system at Bates is designed to be quick and easy, and to allow the greatest possible access to courses for all students while maintaining the quality of the classroom experience.

Incoming students register for courses by completing a course selection worksheet, and then entering their selections into the Garnet Gateway Web-based student records service during registration week. Materials for registration are sent to incoming students by the Dean of Students office. Upperclass students must meet with their advisor to discuss course options during the registration process.

ACADEMIC LIFE

For courses with no enrollment limits, the only further action for students is to attend the first class to confirm enrollment. But other courses are limited in enrollment so that students may use special facilities or benefit from a small, interactive classroom environment. For these courses, the system is designed so students

have several opportunities to gain entry. A detailed overview of registration procedures appears at www.bates.edu/Student-Registration-Overview.xml.



SHORT TERM

The five-week spring Short Term provides a distinctive opportunity for intensive educational programs, on and off campus, that cannot be offered during the regular semesters. These include math and history “boot camps” for majors; workshops focusing on art, music and theater; and units allowing extended work in the laboratory, in local classrooms and in social-service internships. Study abroad has recently included archaeology in the Shetland Islands, environmental studies in Russia and the politics of conservation in Chile. A complete list of courses, including Short Term units, can be found in the printed or online *Bates College Catalog*, at www.bates.edu/catalog.

OFF-CAMPUS STUDY

Students often supplement their Bates experience with additional course work abroad or elsewhere in the United States. In recent years, slightly more than 60 percent have some form of study-abroad experience, and 71 percent of the graduating Class of 2006 received credit for off-campus study. Stephen Sawyer, associate dean of students, also directs off-campus study programs and works closely with interested students and the Off-Campus Study Committee.

Off-Campus Short Term Units

These units are led by Bates faculty and involve travel and/or alternative dates. Additional costs associated with these units are listed in the registration information and parents are encouraged to talk with their son or daughter before registration since an additional financial obligation, including a \$500 nonrefundable deposit, is required. Bates financial aid is available.

Fall Semester Abroad Programs

Developed and led by Bates faculty, these programs focus on language training and also include courses taught by Bates faculty. The Bates comprehensive fee covers all program expenses, including international airfare.

Junior Semester and Junior Year Abroad

The JSA and JYA programs are the most prominent study-abroad opportunities. Whether study abroad is appropriate for an individual student depends on many factors.

From an academic standpoint, the greatest benefits are generally in language study, when advanced work in the major can be undertaken or when the study provides exposure to a distinctly different socioeconomic and cultural setting. During sophomore year, Dean Sawyer meets with each interested student to review the opportunities and application process.

For programs not run by Bates, students pay an administrative fee to Bates (\$1,635 per semester in 2007–08) in addition to the sponsoring college's program costs. Bates and federal financial aid are available for qualifying families. Key requirements include a 2.5 GPA at the time of application, previous language study when the host country's language is taught at Bates, Bates approval of the program for the student and participation in the Off-Campus Study Registration in February. Off-campus study enrollment levels are managed to balance on-campus enrollment levels between the fall and winter semesters; on occasion, students have to change their plans from one semester to another.

Transfer Credit

Degree candidates matriculating as first-year students, either in the fall or winter semester, must earn at least 24 Bates course credits or approved program credits. Transfer students must earn a minimum of 16 Bates credits. They may transfer a maximum of two non-Bates course credits earned after matriculating at Bates. For a full description of the Bates transfer credit policy, please see the *Bates College Catalog*.

LEAVES OF ABSENCE

Though we do not expect our students to leave Bates, a leave of absence suspends a student's enrollment at Bates for a period of time. There are two types of leaves of absence: academic leave and personal leave. All leaves are initiated with the dean of students and require the completion of an academic or personal leave approval form provided by the dean and signed by staff in the Office of the Registrar and Academic Systems. Typically, leaves are for one or two semesters.

INSIDER TIP

If your student begins to consider a leave of absence, urge her or him to immediately talk to her/his faculty advisor and a dean of students. Both the advisor and the deans will be happy to talk things through and help your student consider all of the options.

Academic Leave: Students apply for an academic leave when they plan to take courses at another college or university during the regular academic year. These students must participate in the Off-Campus Study Registration held in conjunction with the early February registration for fall courses, which applies for both semesters of the succeeding year.

Personal Leaves: Personal leaves are taken because of medical or other personal circumstances. In addition, students occasionally take personal leaves to participate in an internship or to pursue other non-academic opportunities. Students contemplating a leave are urged to discuss the idea with their families and their faculty advisor at Bates, as well as with one of the deans.

STUDENT SERVICES

We Are Here to Help

STUDENT SERVICES AT BATES

The deans of students are primarily responsible for the welfare of the student body and for providing a wide range of student services. The Dean of Students office administers the faculty advisory system, certain academic policies and procedures, health services, security, housing, residential and extracurricular matters, new-student and parent orientation and the Multicultural Center. The deans also serve on the following faculty committees: Academic Standing, Athletics, Legal Studies, Medical Studies, Off-Campus Study, Extracurricular Activities and Residential Life. The deans may be consulted on matters relating to:

- Academic policies, regulations and requirements, and petitions for exceptions to them;
- General counseling on academic and personal matters;
- Minority and international student advising;
- Changes in courses, majors, advisors or basic educational plans;
- Leaves of absence and the College Venture Program (off-campus, career-related employment);
- Withdrawals and transfers;
- Transfer credits;
- Judicial/disciplinary matters;
- Off-campus study programs such as Junior Year Abroad, the maritime studies program at Mystic Seaport and the Washington Semester Program;
- Interdisciplinary majors;
- Residential life;
- Immigration and naturalization services and documents.

Dean of Students office members include:

Dean of Students

Tedd R. Goundie, 102 Lane Hall

Dean Goundie oversees all aspects of the Dean of Students office and is principal contact for support of learning-different students and those seeking assistance in meeting academic rules and regulations promulgated by the faculty.

Associate Dean of Students; Director, Off-Campus Study Programs

Stephen W. Sawyer, 110E Lane Hall

Dean Sawyer directs off-campus studies including college exchange, national off-campus study and international study programs. (See Off-Campus Study in the Academic Life section, above, for more information.)

Associate Dean of Students

James L. Reese, 101 Lane Hall

In addition to general advising and working with transfer students, Dean Reese takes primary responsibility for working with international students.

Associate Dean of Students

Holly L. Gurney, 104 Lane Hall

Dean Gurney takes primary responsibility for working with first-year students and the residential life staff and programs.

Assistant Dean of Students

Keith M. Tannenbaum, Student Activities Office, Chase Hall

Dean Tannenbaum is coordinator of student activities and advisor to the Representative Assembly, the Ronj and the Village Club Series.

Assistant Dean of Students

Roland S. Davis, 103 Lane Hall

Dean Davis is the sophomore class dean and coordinates the judicial processes for the College.

Assistant Dean of Students, Director of Housing, and Alcohol, Tobacco, and Other Drug (ATOD) Educator

Erin Foster Zsiga, Housing Office, Chase Hall

Dean Foster Zsiga is responsible for all aspects of student housing and serves as the College's ATOD educator and the advisor to the Chase Hall Committee.

Student Activities and Residential Life Assistant

Jessica Mellen, Student Activities Office, Chase Hall

Jessica Mellen deals with student activities, particularly The Ronj, and works with the deans in the areas of residential life and education.

Accessibility Services

Construction of Bates College began in 1855, and there are a number of historic older buildings on campus. Not every room in every building is accessible to a person using a wheelchair, but all common and public spaces are. Whenever indicated, classes will be scheduled in accessible spaces, and the Dean of Students office will, when physically feasible, make reasonable changes to residences to accommodate students' housing desires. Continuous progress is being made in modifying all buildings to make them accessible, as well as convenient to use.

If your student requires personal attendants, the Student Employment Office offers assistance in identifying and employing suitable people from within or outside the College community.

Please have your student contact the Dean of Students office if assistance is needed in constructing tools and/or adapting laboratory equipment, when appropriate, to improve access to the curriculum.

Major service to wheelchairs and orthotic/prosthetic devices is offered by several businesses in the area.

Career Services

"We are catalysts for students and alumni in realizing the full potential of their liberal arts education."

— *Mission Statement, Office of Career Services*

STUDENT SERVICES

INSIDER TIP

OCS isn't just for seniors! The students who use OCS most effectively are those who begin visiting the office and the Web site during their first year at Bates — and continue to use it throughout their four years. Encourage your student to take advantage of the OCS..

With the aim of helping students move toward an early and ongoing awareness of career development in the liberal arts college context, the Office of Career Services (OCS) offers self-assessment, interest testing, individual counseling, newsletters, career planning workshops and group sessions with specialists. In addition to maintaining a reference service and coordinating campus visits by employment and graduate-school recruiters, the office helps undergraduates invest their summers and other free time in career-exploratory jobs or internships. The OCS library includes a substantial collection of career planning information, candidate guides and employer information.

Chaplain

The Office of the Multifaith Chaplain at Bates offers a variety of opportunities for the support and nurturing of students' spiritual lives and learning. The Rev. William Blaine-Wallace, multifaith chaplain, coordinates campus religious organizations, conducts services and is available for personal counseling. Associated chaplains include members of the Protestant, Roman Catholic and Jewish clergies. Representatives of other religious traditions may be contacted through the chaplain's office, at 163 Wood St.

College Store

Hours: 8:30 a.m.–5 p.m. Monday–Friday, 10 a.m.–4 p.m. Saturday (academic year)
8:30 a.m.–5 p.m. Monday–Friday (summer)

The store stocks textbooks, paperbacks, sundries, clothing, gifts, greeting cards, office and school supplies, Bates-branded products and many other useful and interesting items.

Dining Services

Bates Dining Services prides itself in providing the highest level of service at Memorial Commons and at the thousands of campus events it caters each year. Bates Dining staff take special care to ensure that the menu is always interesting and provides food options that meet every diner's needs.

Bates Dining is the only collegiate dining program to receive an award from Renew America for its sustainability and recycling efforts. In addition, Bates Dining is ranked 20th out of 361 schools in *The Princeton Review* and recently received a gold medal from the National Association of College and University Food Services.

If you have questions, or if your student has a special dietary need, please contact Christine Schwartz, director of Dining Services, at 207-786-8279 or cschwartz@bates.edu. The department's Web site, www.bates.edu/dining.xml, provides a wealth of information about these services, menus, nutrition and environmental initiatives.

Parents and visitors are always welcome to dine in Memorial Commons. Hours and meal costs are posted at www.bates.edu/dining-meals. Here are the current costs:

	Adults	Children
Breakfast	\$4.25	\$2
Lunch	\$6	\$2.75
Dinner	\$7	\$3.50
Brunch	\$6.75	\$3.25

Bates' new dining Commons is scheduled to open in January 2008. For more information, see Construction on Campus, p. 44.

Health Services

The Bates College Health Center is located at 31 Campus Ave., and welcomes students 24 hours a day, seven days a week, when school is in session.



Bates recognizes that physical and mental health significantly influence one's ability to participate fully in the College community. The Health Center strives to enhance each student's well-being by providing comprehensive confidential health care and by encouraging informed individual participation in health-related decisions.

Students with a chronic condition such as diabetes, hypertension, arthritis or emotional issues are urged to contact the Health Center upon their arrival at Bates. Students should ask their physician to send us a summary of their medical records, including instructions for any medications or desensitization injections they receive. Their health can be monitored by the Health Center staff or by a local specialist. Every effort will be made to coordinate care with students' own physicians.

Students with any illness or injury are urged to come promptly to the Health Center. Nurses are on duty 24 hours a day; they handle many common conditions and make referrals as needed. Nurse-practitioner clinics and physician clinics are held weekdays. A physician is on call at all times. In case of emergencies, Bates students run the College's Emergency Medical Services on campus, and ill or injured students may be seen or taken by ambulance to one of two nearby hospitals:

Central Maine Medical Center
300 Main St. • tel. 207-795-0111

Saint Mary's Regional Medical Center
99 Campus Ave. • tel. 207-777-8100

Women's health services are provided by a gynecologist and a nurse practitioner. There is no charge for routine gynecological examinations, although laboratory fees, prescriptions and the cost of special procedures done off campus are the responsibility of the students.

STUDENT SERVICES

The Health Center has five inpatient beds. Staffed by nurses around the clock, the center is a place where persons requiring care, but not hospitalization, for medical or psychological issues may stay. Students are urged to notify their parents or guardians upon admission.

Personal counseling and psychological services are available at the Health Center, and by referral elsewhere. Services include consultation, assessment, psychological testing and counseling. There is no charge for a limited number of appointments with on-campus counselors and psychologists. A consulting psychiatrist is available to provide psychiatric evaluation and/or therapy. Appointments are made through the director of the Health Center and the College pays for the first consultation.

Effective fall 2007, all Bates students are required to have health insurance. Bates will enroll U.S. students in the Bates College Student Health Insurance Policy, a comprehensive plan underwritten by Commercial Travelers Mutual Insurance Co. Coverage is worldwide, runs from Aug. 15, 2007, to Aug. 14, 2008, and costs \$684 annually.

All students will be charged for this policy unless they waive coverage by registering with Bates their own comprehensive policy with at least \$100,000 coverage. The insurance fee will appear on the student's bill for the fall semester, unless the student waives the fee by providing proof of other insurance coverage. Note that the cost of insurance will be factored into the cost of attendance that is used to determine financial aid eligibility and awards. Any U.S.-based insurance company, including MaineCare, is an acceptable alternative to the Bates plan.

International students will be enrolled in a separate dedicated plan underwritten by Nationwide Insurance Co., also costing \$684 annually. This coverage is also worldwide, but with home-country restrictions. If an international student is already insured by an international program and believes that it provides coverage in the U.S., the student or parent should contact that company directly and obtain a "U.S.A. coverage verification" in writing. Most international insurance policies DO NOT cover claims in the U.S. A copy of the verification letter must be sent to the Health Center and we will then notify the Registrar's office that the plan is acceptable. The student will then be instructed to go to the Garnet Gateway and "opt out" of the international plan.

Throughout the year, the Health Center offers programs on health-related topics of interest to students, including discussions of sexuality, drugs, nutrition, stress management and issues specific to women and to men. A staff health educator provides individual consultations on specific areas of concern and works closely with several student groups including Peer Educators and Students Against Sexual Assault.

Information and Library Services

Bates College Information and Library Services (ILS) provides computing, library, archival, telecommunication and media services for the College community. The campus computing network extends to all offices, classrooms and residential rooms, and to many common spaces used for study. Wireless network access is available in Pettengill Hall, the Bates Imaging and Computing Center, Ladd Library and the dormitories. Computing services are offered to faculty, students and staff free of charge, with 24-hour access on more than 50 central servers and on Mac and Windows machines in the public computer areas. Such areas are situated in most academic buildings, with staffed assistance through Help Desk Services

in Ladd Library. There are many specialized labs designed to meet the needs of specific academic disciplines.

On most College computers, programs are available for word processing, spreadsheets, statistics, modeling and graphics. Specialized programs used in classrooms and for research are also available. The College requires virus protection software for all computers on the campus network and provides it free of charge. The sales department, at 110 Russell St. and on the ILS Web site, sells printers, peripherals and supplies.

Library services are provided in two locations: the George and Helen Ladd Library and the Edmund S. Muskie Archives and Special Collections Library. A variety of study spaces for individuals and groups is available. An expert reference staff helps with research projects and finding material for papers. ILS provides online access to national and international databases; electronic journals; and library catalogs at Bates, in Maine and worldwide. Students receive reciprocal borrowing privileges at Bowdoin and Colby colleges as well as through extensive inter-library loan services, anticipating that research needs for senior theses and other advanced projects may require the resources of specialized collections elsewhere. The BatesCard is required for borrowing at the circulation desks at Bates, as well as at Bowdoin and Colby.

Multicultural Center

The Multicultural Center acknowledges, celebrates and promotes the diverse cultural experiences that each member of Bates College brings to the community. The Center acts as catalyst for exploring critical issues on campus by initiating discussions about race, class, ethnicity, gender, nationality and sexual orientation, and the historical and current realities that affect understanding of these topics.

Both the Multicultural Center and its affiliated student organizations present speakers, workshops, exhibits, seminars, off-campus study experiences and cultural celebrations. These programs explore and support the intellectual, social, cultural, political and spiritual development of the entire campus. The Center is open to the entire Bates community and the public. The Center plays a unique and important role in supporting students from marginalized communities and cultures.

Museum of Art

Hours: 10 a.m.–5 p.m. Tuesday–Saturday

The Bates College Museum of Art holds collections focusing on work on paper, including the cornerstone Marsden Hartley Memorial Collection, which features 99 drawings by this important American modernist, a Lewiston native. Rotating exhibitions in the Bates Gallery feature contemporary artists of international stature (plus the popular Senior Exhibition showcasing works by senior art majors each spring), while Collection Gallery exhibitions are more long-term and curriculum-based. Bates students are involved in the museum through internships, access to works for academic study and opportunities to curate exhibi-

INSIDER TIP

We all think we know how libraries work, but there may be plenty that your student doesn't yet know about the Ladd Library. And it's all too easy to waste precious time in frustrating fruitless searches for research materials. Encourage your student to get to know Ladd by taking a tour and developing the habit of asking the reference desk for help. It's one of the best ways to start a great career at Bates.



tions. Each year the museum welcomes some 14,000 visitors and organizes three major exhibitions and publications.

The museum is part of the Maine Art Museum Trail, a collaboration highlighting Maine's premiere art collections, at the Bowdoin College Museum of Art, the Colby Museum of Art, the Farnsworth Art Museum in Rockland, the Ogunquit Museum of American Art, the Portland Museum of Art and the University of Maine Museum of Art, as well as at Bates. For more information on exhibitions at Bates and along the Museum Art Trail, visit www.bates.edu/museum or www.maineartmuseums.org.

Registrar and Academic Systems

Contact: Mary Meserve, Interim Registrar

Libbey Forum, 44 Mountain Ave. • 207-755-5949 • E-mail: registrar@bates.edu • www.bates.edu/registrar

Located in Libbey Forum along with the Student Financial Services office, the Office of the Registrar and Academic Systems provides comprehensive support for students' academic progress through Bates College. The department maintains the Garnet Gateway, a secure online records system where students can view academic information, request enrollment verifications and transcripts, and register for courses. A short service list includes:

- **Registration:** Assisting students with course registration and access to academic information on the Web via our online student records service, the Garnet Gateway (www.bates.edu/garnet-gateway/).
- **Enrollment verifications:** Many families need these for student health coverage, discounts on student auto insurance, tuition waivers and the all-important ski pass! Self-service enrollment verifications are available on the Garnet Gateway.
- **Student academic progress:** Degree audits and general academic information regarding degree requirements and academic policies. The registrar and associate registrar can meet with students on a variety of academic issues including graduation and transfer credit, and the service staff is available on a drop-in basis to answer basic academic questions and provide general assistance.

Student Financial Services, Financial Aid

Contact: Wendy Glass, Interim Director

Libbey Forum, 44 Mountain Ave. • 207-786-6096 • E-mail: finaid@bates.edu (for financial aid questions) and finoff@bates.edu (for billing questions) • www.bates.edu/sfs

Located in Libbey Forum, along with the Office of the Registrar and Academic Systems, Student Financial Services (SFS) handles student accounts, accounts receivable and the College's need-based aid program.

Services include:

- **Financial aid counseling:** Both comprehensive financial aid information and answers to general questions about the aid process are available. Personal and secure information about financing may be accessed on the Garnet Gateway.
- **Loans and payment plans:** Information about federal student and parent loans, alternative loan programs and the tuition payment plan through Tuition Management Systems is available from the office staff and posted online.
- **Account balance information:** Students may access information regarding their individual accounts through the Garnet Gateway or by calling SFS.

STUDENT SERVICES

Financial Aid

If your son or daughter wants to be considered for need-based assistance from the College, there are several things to do and remember:

- The student must submit an application each year.
- Materials to be submitted include the Free Application for Federal Student Aid (FAFSA), the CSS/Financial Aid PROFILE application, and copies of student and parental income tax returns and W-2 forms. Additional materials may be required. The SFS Web site lists detailed financial aid requirements.
- This information **must be filed by April 15**. Students and families who do not submit the needed forms by the deadline risk becoming ineligible for Bates financial aid. Financial aid decision letters for the following academic year are mailed to students at home in early July.
- The SFS Web site includes comprehensive information regarding financial aid, federal and alternative loan programs, and tuition payment plans. Visit www.bates.edu/sfs.

Security and Campus Safety

Contact: Tom Carey '73, Director of Security and Campus Safety

245 College St. • 207-786-6254 • **Emergency: 207-786-6111 or 6111 on a campus phone**



Bates College's trained, full-time Security officers patrol the campus on foot, on bicycles and in vehicles 24 hours a day. Communications officers are on duty at all times, maintaining constant radio contact with Security personnel and answering phone calls including those from the "blue light" emergency phones located throughout the campus. This office also initiates programs and policies that promote

the safety and security of all individuals on campus and protect their personal property as well as College property. If safety or security concerns arise, please contact the Security and Campus Safety Office immediately. The College assumes no responsibility for the loss or damage of personal property. Thefts should be reported directly to Security. In the case of a stolen wallet, a small emergency loan may be accessed through the Dean of Students office.

All residential structures and the major academic and athletic buildings on campus are equipped with an electronic access control system. This system acts as an external door key for buildings where students have authorized access, based on location and time of day. This allows the College much greater control over which doors are available for entering buildings, when doors are locked and who is authorized to enter.

Harvard Center for Community Partnerships

David Scobey, Director

161-163 Wood St. • 207-786-6202 • www.bates.edu/harvard-center.xml

The Harvard Center for Community Partnerships embodies Bates' commitment to placing civic and social responsibility at the heart of the Bates education. Founded in 2002, the Center's mission is to integrate community engagement and service with student life and learning.

The Center coordinates Bates' many programs for service-learning, community-based research and volunteer service, and it oversees the Bates-Morse Mountain Conservation Area. It sponsors community projects in areas as diverse as basic human services, K-12 education, municipal government, environmental education and advocacy; health, public art and culture; and public policy. The Center oversees certain grant programs including the Arthur Crafts Service Awards, for students pursuing service-learning projects during the academic year; Vincent Mulford Service Internship and Research Fund grants, for summertime service-learning projects; and Community Work-Study Fellowships, providing service-learning opportunities for eligible students in community agencies year-round. It also coordinates volunteer opportunities in the Lewiston-Auburn community.

A commitment to collaboration with community partners to meet both civic and academic needs forms the basis for the Center's work. More than half of the student body engages in academic service-learning and community-based research during their Bates careers — in courses and Short Term units, senior theses or summer fellowships — making community-based learning a distinctive strength of the Bates education.

INSIDER TIP

Individual writing conferences are by appointment. As the semester progresses, the Writing Workshop becomes busier and busier. Encourage your student to book appointments early and often!

Writing Workshop

Joyce Seligman, Director

53 Campus Ave. • 207-786-6159 • www.bates.edu/x51721.xml

The Writing Workshop welcomes students who want to learn more about critical thinking and writing well. Staff members are experienced professional writers trained to provide supportive and insightful instruction. The Writing Workshop offers individual writing conferences, writing assessments, a resource library, handouts, orientation sessions and small-group workshops. Staff assist students in analyzing assignments, writing and revising drafts, and developing clear, concise prose.

Mathematics and Statistics Workshop

Grace Couloumbe '94, Director

Canham House, 146 Wood St. • 207-786-8374 • abacus.bates.edu/acad/acad_support/msw/index.html

Dedicated to encouraging quantitative literacy and reasoning, the Mathematics and Statistics Workshop offers a variety of tutoring and help sessions to students seeking assistance with mathematical reasoning and comprehension. Two-hour calculus study sessions are conducted by student tutors each weeknight throughout the fall and winter semesters, and one-on-one assistance is available for students in any course requiring a command of quantitative or statistical skills.

RESIDENTIAL LIFE

Beyond the Classroom

RESIDENTIAL LIFE

The Residential Life Program seeks to create living environments within College residences that are conducive to learning, friendship and community. Integral to our vision for residential life is our belief that the residential component of a liberal arts education should have a programmatic element that complements and supports the educational mission of the College.

The Office of the Dean of Students is directly responsible for residential life. Residence coordinators work in conjunction with house councils and the deans for the welfare of the residents in their buildings. Physical maintenance of the residence halls is administered by the director of Physical Plant. Individual residence-hall and food-service contracts with students should be consulted for details of residential regulations.

CONSTRUCTION ON CAMPUS

FMI: Construction updates are published regularly online at www.bates.edu/campus-improvements.xml.

The new student housing adjacent to Rand Hall will be in service by the fall semester of 2007, providing much-needed accommodations and a stronger sense of residential community west of College Street.

Construction of the new dining Commons and Alumni Walk, a cross-campus connector, began in fall 2006 and will be completed by January 2008. The Commons is located next to Central Avenue between Alumni Gym and the football bleachers. The parking lot next to Alumni Gym is out of service during Commons construction, but the passage across Central Avenue to the athletic complex remains open. Alumni Walk work has eliminated parking on Andrews Road permanently, and is causing temporary changes in pedestrian and vehicle traffic on campus. Construction details are shared with the campus community before any changes are made that affect movement around campus.



HOUSING AT BATES

Housing Options

Bates is a residential college. On-campus housing is guaranteed for four years, and is mandatory for all students except for those seniors who have been granted special permission by the Office of the Dean of Students to reside off campus. The quality of residential life at Bates is considered an influence on students' academic achievement and overall personal growth.

A wide range of housing options is available. Eight traditional residence halls house from 40 to 165 students each, and 25 houses, mostly Victorian in style, each accommodate five to 30 students in a variety of room types that offer a more homelike atmosphere.

Most rooms on campus house two students, although singles, triples, quads and suites are available. Some residences are coed and some are single-gender. All first-year students have at least one roommate and are clustered in groups of 12 to 16 students in areas designated as “first-year centers,” which are wings or floors reserved for them to live with the upper-class men and women who serve as junior advisors.

Off-campus housing is available each year to a limited number of seniors. These seniors are permitted to move off campus in order to experience independent living before graduation. Off-campus students can elect to keep or drop the meal plan.

Residence Coordinators and Junior Advisors

Residence coordinators (RCs) and junior advisors (JAs) are resident peer advisors who work in conjunction with the Office of the Dean of Students and other College offices. As described above, first-year students live in groups of up to 16 in a designated area with a JA. The JAs help entering students make the transition from secondary school to college and integrate into the academic and social life of Bates.

RCs serve primarily as administrative liaisons for upperclass students living in College residences. Other duties of the RCs include programming events, mediating and resolving disputes, and working in conjunction with the Office of the Dean of Students to address issues pertaining to residential life.

Room Assignments and the Lottery

Room assignment for new students is an important process. Early in the summer new students receive a packet of information that includes instructions on how to fill out the online Residence and Roommate Selection Form, available through the Garnet Gateway on the Bates Web site (abacus.bates.edu/garnet-gateway/). The questionnaire helps the Housing Office make the best possible matches for all new students.

Housing options available to new students include: an all-first-year student residence hall or house; an all-class-years building; an all-first-year chemical-free house (no alcohol, tobacco or other drugs); or an all-classes “low-chem” residence hall, in which alcohol possession is restricted even among upper-class students. New students are asked to rank their preference for each of these options, and the Housing Office strives to meet as many of these preferences as possible. Due to limited space and high demand for certain housing options, it is difficult to meet the first choice of every entering student.

The College believes that learning to live with another person is an important part of the first-year experience. First-year students will not be placed in singles and should look forward to the opportunity to get to know other members of the entering class. Our hope is that residential life will be a rewarding part of the Bates experience for every student.

Housing for rising sophomores, juniors and seniors is determined by a lottery system. The following year’s seniors have first pick of rooms on campus, followed by the next year’s juniors and finally the rising sophomores. A randomly generated number is assigned to each

RESIDENTIAL LIFE

student. If a student decides to cancel his or her housing assignment after selecting a room with a roommate(s) using his or her lottery number, the remaining occupant(s) of that room may be removed from the room and required to go through the fall selection process to be assigned a new room. Often only juniors and seniors have lottery numbers low enough to procure single rooms.

Room Changes

We hope that the process of living and negotiating with another new student is successful and rewarding. We also intend that the process be educational. There is often a need for students to mediate differences, make compromises and reach a point where they can live together successfully. The junior advisor can play an important role in facilitating this process for first-years, while residence coordinators mediate among upperclass students.

Sometimes roommates believe it might be best for them to no longer live together. When a room change is needed, it is important for students to communicate with the Housing Office. Parents should urge their sons and daughters to try to work through issues with their roommates and then to consult the Housing Office, as it is essential for students to learn to advocate for themselves in this process. The Housing Office maintains a list of available spaces. If the student is able to facilitate the change by switching with another student or moving into an open space, the student must nonetheless obtain approval from the Housing Office. If a student has changed rooms without obtaining the appropriate permission, a \$200 room charge may be assessed to his or her account and the student will be required to return to the original room. The Housing Office maintains all records for the residence halls and houses, including an accurate list of where students live.

Patience is key to the room-change process. Students sometimes feel that their situation needs to be handled immediately, but this isn't always possible. There can be multiple students at any given time who require a room switch, and the Housing Office must prioritize the needs of each situation. Moreover, the Housing Office will work directly with students and attempt to respond to their concerns when possible. The office moves as quickly as it can to resolve each situation. Parental intervention on behalf of any student runs counter to our philosophy that students need to develop problem-solving skills while at Bates and should devise solutions to their concerns independently.

Dorm Damage

Students are responsible for any damage caused to their own rooms. Damage to common areas is assumed by the person or group deemed responsible. When it is impossible to identify the responsible party, charges for repairs are billed to all building residents. Charges will appear on semester bills. Failure to pay dorm damage charges may lead to transcripts being withheld and/or disciplinary action. Willful destruction of property will result in disciplinary action. If you have a question regarding your student's dorm damage charges, please contact David Larrabee in Physical Plant at 207-786-6205 or e-mail: dlarrabe@bates.edu.

Safety and Privacy

In taking a room in a residence hall, a student assumes responsibility for the use and general care of the room and its furnishings. The College respects the students' right to privacy and their desire to control their own living environment, but this is balanced with the College's responsibility to provide good-quality and safe residential facilities. Therefore, the College retains the right to enter students' rooms, in cases of emergency or with cause, and only with

permission of the Dean of Students or his/her designee with the reason for the examination and the objects or information sought.

Furnishings

Each resident student is furnished with a bed, bookshelf, desk, desk chair and bureau. The provided furniture must remain in the room at all times. To ensure adequate space, please check room dimensions and layout before bringing additional furniture. Students should bring their own lamps (non-halogen), blankets, towels, sheets (mattress size is 35-by-80) and pillows. Water beds are not permitted, but lofts may be constructed according to regulations set forth by the Safety Office, which is located in Human Resources.

Vacations

To protect students' safety and property, residences will be closed during some vacations. Students are not permitted access except in the presence of College personnel. Rooms will be available for occupancy one day prior to the opening of each term and will be closed at the end of the examination period. The College may provide residential accommodations for certain vacation periods to a limited number of students by prior arrangement. Whenever such an opportunity arises, the Dean of Students Office will notify all students in advance.

Storage of Students' Personal Items

The College has a limited amount of space for student storage. The College cannot assume any legal or financial responsibility for property left in designated storage areas. But the College will attempt to safeguard all property left in these designated storage areas if securely packaged in accordance with the storage policy and tagged with Bates College Student Storage Tags. The student's identification (name, class year and address) should also be listed inside the package, in the event that the exterior tag is separated from the package. No storage is provided for graduating seniors and there is a one-year storage limitation for underclass students. After that time, the items will be considered "abandoned," and the College will dispose of them. The Storage Policy is posted at all storage locations and may be obtained from the Physical Plant office.

Personal Property Insurance

Although damage to personal property due to fire, flood or other disaster is not common, such damage could occur. In the event of such a misfortune, the College would like to ensure that parents and students are aware of the College's position on such matters, and that families are adequately prepared. In the event of damage to personal property, the College will make every effort to assist students in their time of need, but cannot accept any financial burden. The College encourages parents to investigate their homeowners insurance to see if the student's personal belongings are covered. In the event that your policy does not provide coverage in this situation, most companies allow extensions to be made on existing policies. The College recommends that parents have some sort of protection in the unlikely event of such an occurrence.

Banking

The College has arranged for every student to have a SimplyFree checking account with TD Banknorth, if desired. The bank account requires no minimum balance and imposes no monthly maintenance fees.

RESIDENTIAL LIFE

An ATM is located in Chase Hall. With a TD Banknorth account, students may obtain cash from the ATM with no fee. Other bank cards will also work in the ATM, but each transaction will incur fees.

MEAL PLANS

While Bates is in session, the College meal plan provides for three meals a day Monday through Saturday, and brunch and dinner on Sunday. The first meal of each semester is dinner prior to the beginning of classes and the last meal follows the conclusion of final examinations. Food service is limited during most vacations. All on-campus students are on the meal plan. Off-campus students may purchase meal privileges by the semester at the Student Financial Services office or by the meal at Commons. Dining hours for Commons are posted in Chase Hall. Guests may dine at Commons according to the following fee schedule: breakfast, \$4.25; lunch, \$6; dinner, \$7; brunch, \$6.75.

The kitchen and dining facilities at Frye Street Union and at certain residences are also available on a reserve (“blueslip”) basis for dinners and other gatherings.

CARS AND PARKING

The City of Lewiston restricts parking from Dec. 1 through April 15. During this period, parking on the street overnight is banned and on many streets one side is completely closed to parking.

Vehicle Registration

All student vehicles must be registered with Security and display a College parking permit or a temporary permit. Parking permits are allocated through a lottery system administered by the Bates College Student Government. The permit fee is \$75 per academic year. Visitor permits are free. Vehicles must be insured for \$25,000–\$50,000 minimum liability and display a valid inspection sticker from the state in which they are registered. Any vehicle parked on Bates property without valid registration may be towed and stored at the risk and expense of the owner and/or operator. Junior-class students going abroad one or both semesters need to plan ahead by participating in the spring lottery to gain or retain a parking permit when they return.

Parking Violations

Parking tickets are issued when drivers violate parking regulations. Campus parking privileges are revoked for the academic year after five violations. All tickets are billed to student accounts if the owner is known. All tickets may be paid at the Student Financial Services office or appealed to the Security office/Parking Appeals Board within seven days of ticket issuance. Fines vary from \$10 to \$75 depending upon specific violations.

EXTRACURRICULAR LIFE

Bates has more than 90 student organizations, 28 intercollegiate athletic teams, intramural and club sports, and a diverse fine-arts program. All of these help sustain an exciting and

INSIDER TIP

Parking decals are not transferable from one student vehicle to another. Violations will result in a student conduct report to the Dean of Students office, which may result in a loss of parking privileges.

diverse campus life. Most Bates students participate in one or more of the clubs or committees, nearly 60 percent in an intramural or club sport, and one-third compete on a varsity team. To further ensure a balanced social life on campus with a variety of options for students, Bates provides extensive programming that highlights nonalcoholic alternatives. This includes the biweekly Village Club Series, directed by the Student Activities Office, and the regular activities at The Ronj, the student-run coffeehouse on Frye Street, which operates late into the evening.

The Dean of Students office and the Department of Athletics have also initiated the Healthy Choices program as a vehicle for alcohol education and alternative programming. Through this program, student athletic leaders work to challenge alcohol abuse through peer education and an expanded intramural program. The program also selectively markets certain intramural programs to first-year students as an alternative to other unstructured social activities where alcohol may be present.

STUDENT IDENTIFICATION CARDS

The BatesCard student ID is provided to each registered student. The card is used as a picture identification card, a library card, a meal plan ID and as an electronic “key” to student residences, athletic facilities and some academic buildings. Students can enter their home dorms around the clock, and all other student residences from 7 a.m. to midnight Sunday through Thursday and 7 a.m. to 2 a.m. Friday and Saturday. The BatesCard can also serve as an ATM card for TD Banknorth accounts at certain locations. Replacement cards are issued by the Access Control Office in Chase Hall, with a \$25 fee charged for the replacement.



SOCIAL CONDUCT

The Way Life Should Be

PERSONAL RESPONSIBILITY AND SOCIAL CONDUCT

Traditionally, Bates has taken pride in the responsibility of its students and the social and educational atmosphere of its campus. We do hold our students responsible for their conduct at all times. Any student who becomes disorderly, is involved in any disturbance, interferes with the rights of others, damages property, brings the name of the College into disrepute, or is involved, as an individual or part of a group, in unacceptable social behavior on or off campus may be subject to disciplinary action by the Student Conduct Committee.

Academic Misconduct

Academic dishonesty, in whatever form, diminishes the integrity of education at the College. Such conduct is a serious offense, subject to stern disciplinary action. Academic misconduct falls into three categories: plagiarism, cheating and falsifying results or data.

Social Misconduct

Cases of social misconduct usually fall into one of several general categories. While not exhaustive, the following categories illustrate the expectations of the College and provide examples of misconduct subject to College discipline. Many of these categories may have a counterpart in the State of Maine Criminal Code. Students and parents must realize that addressing a violation of the College's code of conduct does not exempt the individual from prosecution by proper authorities under criminal or civil code.

Categories include:

1. Actions against persons;
2. Actions against property;
3. Dangerous or disorderly conduct;
4. Actions against the institution;
5. Obstruction of the College's judicial or disciplinary procedures.

Alcohol and Drug Abuse Policy

Bates College continues to affirm the value of individual autonomy in making decisions about one's life, and will continue to make education and consultation its chief strategies for meeting its responsibilities. In accordance with the Drug-Free Schools and Communities Act, the College reaffirms standards of conduct that clearly prohibit the unlawful possession, use or distribution of illicit drugs and alcohol by students and employees, on the College's property or as part of any of its activities.

We will always use our counseling resources to help students involved with drugs. But the College bears the major responsibility for the welfare of the student body. Therefore, possession, distribution or use of illegal drugs and narcotics renders a student liable to disciplinary action, including confiscation of materials and dismissal. Student violations of Bates policies governing drugs and alcohol are subject to disciplinary actions, which may include referral to counseling, revocation of the privilege of using College facilities for certain events if



student groups or organizations are involved, and/or referral of individuals to the Student Conduct Committee.

Policy Regarding Sexual Violence

Bates denounces the use of violence directed against any individual or group. We, the College community, regard sexual assault as a violent crime, a particularly heinous form of sexual harassment, whether committed by a stranger or an acquaintance on or off campus. We condemn the commission of sexual assaults and believe persons charged with such offenses should be dealt with promptly and fairly through the courts and our own judicial system. Moreover, we rededicate ourselves to eradicating hostile settings in which our ability to work, study, live and learn together is inhibited. Finally, we pledge assistance through the various departments of the College in aiding survivors of assault to determine how best they may regain control over their circumstances.

Student Conduct Committee

Cases of misconduct that are not resolved through an individual meeting with a dean or through mediation, and that are more serious than can be resolved by a dean's review, are heard by the Student Conduct Committee (SCC). The dean refers all major cases of misconduct to the Student Conduct Committee. A major case of misconduct is any case wherein, in the judgment of the dean, appropriate disciplinary action if taken might involve probation, suspension or dismissal.

The SCC holds hearings, determines whether or not a violation of College policy has occurred and assigns appropriate penalties. Students whose misconduct is addressed through an SCC hearing have an opportunity to offer their account of the events in question and can provide the committee with relevant information that might explain the conduct. The committee may also hear from several types of additional witnesses.

The SCC deliberates in closed session to determine whether College policy has been violated. The committee also decides what penalties to impose. Sanctions that may be imposed by the committee include but are not limited to:

1. Verbal warning;
2. Letter of censure;
3. Exclusion from various College social and/or ceremonial activities;
4. Disciplinary probation;
5. Mandatory referral to a counseling program;
6. Suspension for a designated period of time;
7. Suspension with readmission contingent on proof of counseling or successful completion of a rehabilitation program; and/or
8. Dismissal from the College.

The College reserves the right to involve law enforcement authorities and/or undertake legal proceedings against a student. The official and complete description of the SCC and its guidelines appears at www.bates.edu/x35305.xml.

MONEY MATTERS

FINANCING A BATES EDUCATION

Students who demonstrate financial need according to Bates' standards of eligibility are usually awarded a grant that does not have to be repaid, a low-interest student loan and a campus job (although students with very little need may receive only loan and work assistance). In the 2006–07 academic year, grants from Bates ranged from a few hundred dollars to more than \$44,000.

First-year students should note that financial aid awards are not considered final until all required documents, including family tax returns and W-2 forms, are received and matched against PROFILE and FAFSA information previously submitted.

Fees and Due Dates

Tuition, room, board and fees for all students residing at Bates College are included in one comprehensive fee. When a student enrolls, he or she incurs a financial obligation to Bates. The total due after subtracting financial aid must be received by the due date each semester.

Payments are due on the following dates each year:

Registration Deposit (new students only)	May 1
Fall Semester	Aug. 1
Winter Semester	Dec. 1

Students are required to name a guarantor, a person who is financially responsible for their accounts. Semester bills are mailed in the student's name to the guarantor several weeks prior to the due date each semester. Students and guarantors may authorize changes to guarantor name and address information through the Office of the Registrar and Academic Systems.

Payment in full is expected by the due dates for each semester, listed above. If payment is not received, the student may become ineligible to register for classes, receive grades and transcripts, choose campus housing and graduate. Late fees may be assessed on balances that remain unpaid after the due dates.

Bates offers a monthly payment plan through Tuition Management Systems. Information is available by phone at 800-722-4867 or online at www.afford.com.

Some off-campus Short Term units involve extensive travel elsewhere in the United States or abroad. Additional charges are assessed to cover the costs of transportation, facilities and accommodations required by such programs. The nonrefundable deposit is due on Feb. 15 each year. Payment for all additional costs is due March 15. Please see the *Bates College Catalog* for more information.

Refund Policy

Students who leave Bates during a semester are required to apply in writing and complete a leave-of-absence form or a withdrawal form through the Office of the Dean of Students. Refunds are issued upon request to the Office of the Registrar and Academic Systems after a leave or withdrawal has been granted. Students withdrawing on or before the 50th day of a full semester receive a prorated refund of the annual charge, as follows:

On or before the first day of classes, 100 percent; two–10 days, 90 percent; 11–20 days, 75 percent; 21–30 days, 50 percent; 31–50 days, 25 percent; more than 50 days, no refund.

In accordance with federal regulations, the first day of the leave or withdrawal is the date indicated by the student on the leave of absence or withdrawal form. If no date is stipulated by the student, the first day of the leave or withdrawal is defined as the last day the student attended any class. Students who withdraw prior to the beginning of either the first or second semester must notify the College by May 14 or Nov. 1, respectively. For information concerning financial aid, payment plans or bill payment, please visit the SFS Web site at www.bates.edu/sfs or contact: Office of Student Financial Services, Libbey Forum, 44 Mountain Ave., Lewiston, ME 04240 • 207-786-6096 • Fax: 207-786-8350 • E-mail: finoff@bates.edu



Campus Employment Opportunities

Bates offers many opportunities for students to earn money and gain valuable skills through campus and work-study jobs. The Student Employment Office is a student-managed division of the College's Department of Human Resources. The office is an intermediary between student employees and employers, and is a resource center for issues concerning student employment. The primary function of the Student Employment Office is to assist Bates students in securing on-campus employment by facilitating and regulating the application process. The office also posts off-campus positions, ranging from tutoring jobs in the surrounding community to work-study positions at Maine nonprofit organizations. The Student Employment Office is located at 220 College St., and may be reached at 207-786-6303 or seo@bates.edu.

HATHORN HALL



151 YEARS AND COUNTING

Bates College is a coeducational, nonsectarian, residential college with special commitments to academic rigor and to assuring, in all of its efforts, the dignity of each individual and access to its programs and opportunities by qualified learners. Bates prizes both the inherent values of a demanding education and the profound usefulness of learning, teaching and understanding.

Bates was founded in 1855 by people who believed strongly in freedom, civil rights and the importance of a higher education for all who could benefit from it. Bates is devoted to undergraduate education in science and the arts, and a commitment to teaching excellence is central to the College's mission.

The College is recognized for its inclusive social character. There are no fraternities or sororities, and student organizations are open to all. When it was founded, Bates was the first coeducational college in New England and admitted students without regard to race, religion, national origin or gender.

In the mid-19th century, Oren B. Cheney, a Dartmouth graduate and minister of the Freewill Baptist denomination, conceived the idea of founding the Maine State Seminary in Lewiston. Within a few years the seminary became a college, and it was Cheney who obtained financial support from Benjamin E. Bates, the Boston manufacturer for whom the College was named.

Cheney is now honored as the founder and first president of the College. He was followed in 1894 by George Colby Chase, who led the young institution through a period of growth in building, endowment and academic recognition. That growth continued from 1920 to 1944 under President Clifton Daggett Gray, and through 1966 under President Charles Franklin Phillips. Thomas Hedley Reynolds, the College's fifth president, brought national attention to Bates by developing a superior faculty and innovative academic programs. Donald W. Harward, Bates' sixth president, served from 1989 into 2002. Under his leadership, the College community examined the challenges facing it and planned how it must respond in the 21st century.

Elaine Tuttle Hansen took office as Bates' seventh president, and first woman president, in July 2002. She came from Haverford College, where as chief academic officer she became known for strong faculty recruitment and the advancement of major new interdisciplinary programs. Her scholarly specialties range from Old English and Chaucer studies to contemporary women writers. Soon after arriving at Bates, she initiated a first-of-its-kind comprehensive facilities master plan, and is presiding over the planning for an improved campus, with emphasis on facilities that enhance student life.

Bates has limited its admissions and grown slowly, yet has also pursued an ambitious program of building and equipment acquisition to support academics and student life. Major dormitory and classroom projects were completed during the last decade, and Bates has recently added several athletic facilities, notably a new squash facility and the Bert Andrews '74 Room, a cardio fitness center in Merrill Gymnasium. Completion of a new student housing facility is scheduled for summer 2007, and by January 2008 a new dining Commons and the cross-campus Alumni Walk are slated to open.

INDEX

A

Abroad Programs 32
Academic,
 Advising 31
 Calendar SEE inside front cover
 Life 26
 Misconduct 50
 Standing 30
Accessibility Services 35
Accommodations 12
Administrative Offices 7
Advising, Academic 31
Alcohol and Drug Abuse Policy 50
Automobile Repair 21

B

Bakeries 24
Banking 47
Bates Clubs 25
Bates Magazine 24
Bates Parents & Family Association 8
Bates Student, The 25
BatesCard 49
Being involved with Bates 8

C

Calendar, Academic SEE inside front cover
Campus,
 Facilities 7
 Map 58; inside back cover foldout
 Safety 42
Cars, Registration 48
Career Services 35
Chaplain 36
College,
 History 55
 Store 36
Commencement 10
Computers 38
Constuction, New 44
Contacting Bates 6

D

Dean of Students 6, 34
Dining,
 Auburn Area 16
 Brunswick Area 19
 Freeport Area 19
 Lewiston Area 16
Dining Services 36
 Dining Commons 36, 44
Dorm Damage 46
Directions, Driving 11; inside back cover foldout
Drug Abuse Policy 50
Due Dates, Fees 52

E

Emergency Telephone Numbers 6, 42
Employment Opportunities, Student 53
Events, Campus 22
Extracurricular Life 48

F

Fall Semester Abroad Programs 32
Fees and Due Dates 52
FERPA 30
Financial Services 7, 41
Financing a Bates Education 52
Florists 24
Furnishings 47

G

General Education Requirements 26
Grades 29
Graduation Requirements/Honors/Thesis 27
Groceries/Markets 20

H

Harvard Center for Community Partnerships 43
Health Services 37
History, Bates College 55
Honors Requirements 27
Housing,
 Director 6
 New Residences 44
 Options 44

I

Identification Cards, Student 49
Information and Library Services 38
Information Telephone Numbers 6
Insurance, Personal Property 47

J

Junior Advisors 45
Junior Semester and
 Junior Year Abroad Programs 33

L

Leaves of Absence 33
Library Services 38

M

Map 58; inside back cover foldout
 Markets/Groceries 20
 Mathematics and Statistics Workshop 43
 Meal Plans 48
 Misconduct,
 Academic 50
 Social 50
 Multicultural Center 39
 Museum of Art 39

N

New Student Orientation 10

O

Off-Campus,
 Short Term Units 32
 Study 32
 Outdoor Recreation 22

P

Parents & Family Association 8
 Parents & Families at Bates 8
 Parents & Family Weekend 10
 Parking/Parking Violations 48
 Personal Property Insurance 47
 Pharmacies 21
 Policy,
 Sexual Violence 51
 Refund 52
 Postal Mail 23

R

Refund Policy 52
 Registrar 7, 41
 Registration,
 Car 48
 Course 31
 Religious Worship 22
 Repair, Automobile 21
 Requirements,
 General Education 26
 Graduation 27
 Honors 27
 Reservations, accommodations and dining 11
 Residential Life 44
 Residence Coordinators/Junior Advisors 45
 Room,
 Assignments/Lottery 45
 Changes 46

S

Security 42
 Service-Learning 43
 Services, Health 37
 Services, Library 38
 Sexual Violence, Policy Regarding 51
 Shopping 20
 Short Term 32
 Social Conduct/Misconduct 50
 Storage Facilities 21
 Student Employment Opportunities 53
 Student,
 Conduct Committee 51
 Financial Services 7, 41
 Services 6, 34
 Study Abroad 32
 Junior Semester and Junior Year Programs 33
 Study,
 Off-Campus 32
 Off-Campus Short Term Units 32
 Suggested Reading for Parents 25

T

Telephones, Student 23
 Thesis 27
 Transfer Credit 33
 Travel Information (to Bates) 11; inside back cover foldout

V

Violations, Parking 48
 Visiting, Tips, 11
 Visiting Campus 10

W

Weather 11
 Worship 22
 Workshop,
 Writing 43
 Mathematics and Statistics 43
 Writing Workshop 43
www.bates.edu 25

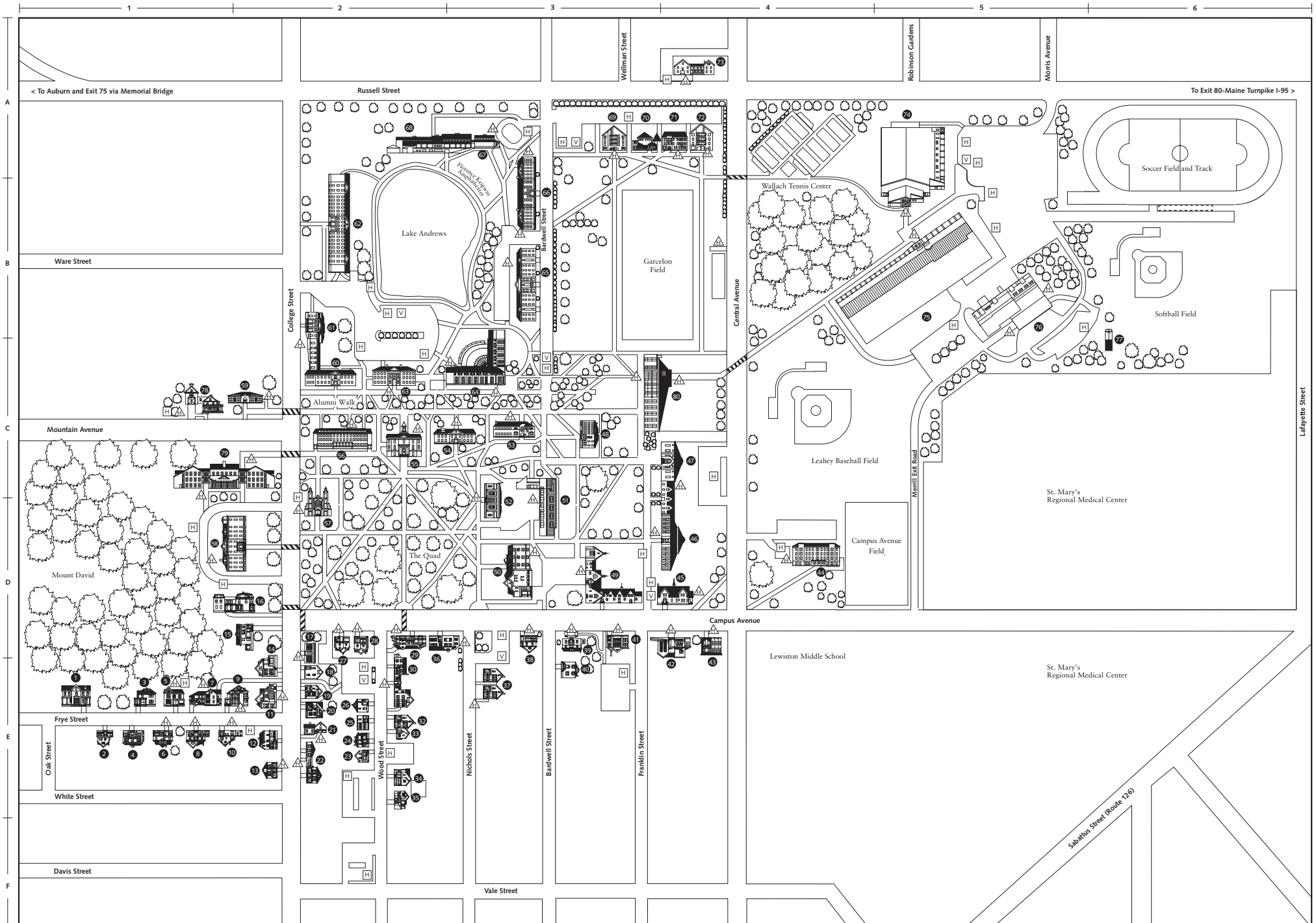
CAMPUS MAP

Campus Buildings




- 47 C-4 Alumni Gymnasium
- 42 E-4 Alumni House
67 Campus Ave.
- 40 E-3 111 Bardwell St.
Environmental Studies
- 67 A-3 Bates College Museum
of Art
- 38 E-3 45 Campus Ave.
- 43 E-4 73/75 Campus Ave.
Philosophy and Religion
- 24 E-2 Canham House
146 Wood St.
Math Workshop
- 10 E-1 Career Services/WRBC-FM
31 Frye St.
- 50 D-3 Carnegie Science Hall
*Biology, Geology, Physics,
Astronomy, Neuroscience*
- 57 D-2 Chapel
- 49 D-4 Chase Hall
*Student Activities Center,
Post Office, Memorial
Commons, Bobcat Den,
College Store, Concierge*
- 37 E-3 Communications and
Media Relations
141 Nichols St.
145 Nichols St.
- 13 E-2 220 College St.
*Maine Campus Compact,
Payroll Services, Student
Employment*
- 52 D-3 Coram Library/Imaging
& Computing Center
- 76 B-5 Cutten Maintenance
Center
- 54 C-3 Dana Chemistry Hall
- 78 C-1 Dunn Guest House
- 46 D-4 (Clifton Daggett) Gray
Athletic Building
- 77 C-6 Greenhouse
- 55 C-2 Hathorn Hall
Languages, Mathematics
- 36 E-2 Health Center
31 Campus Ave.
- 22 E-2 Human Resources
215 College St.
- 73 A-4 Information Services
110 Russell St.
- 51 D-3 Ladd Library
- 63 C-2 Lane Hall
Administration
- 59 C-2 Libbey Forum
*Offices of the Registrar
and Student Financial
Services*
- 29 D-2 Lindholm House
23 Campus Ave.
Admissions
- 70 A-3 Benjamin Mays Center
- 75 B-5 Merrill Gymnasium
- 41 E-4 Multicultural Center
63 Campus Ave.
- 45 D-4 Muskie Archives
- 80 C-3 New Dining Commons
136 Central Ave.
- 68 A-2 Olin Arts Center
*Art and Visual Culture,
Music, Concert Hall*
- 64 C-3 Pettengill Hall/Perry
Atrium
- 60 C-2 Pettigrew Hall
*English, Theater/Dance/
Rhetoric, Gannett Theater,
Information Services*
- 15 D-1 President's House
256 College St.
- 7 E-1 Ross House
32 Frye St.
The Ronj Coffeehouse
- 61 B-2 Schaeffer Theatre
Black Box Theater
- 17 D-2 Security and Campus
Safety
245 College St.
- 74 A-5 Underhill Arena
*Ice Rink, Davis Fitness
Center*
- 30 E-2 161-163 Wood St.
*Harvard Center for
Community Partnerships,
Bates Dance Festival,
Chaplain*
- 39 E-3 Writing Workshop
53 Campus Ave.
- 6 E-1 Hacker House
27 Frye St.
- 12 E-2 Hayes House
226 College St.
Hedge Hall
- 53 C-3 7 Andrews Rd.
- 25 E-2 Herrick House
146 Wood St.
- 35 E-2 Holmes House
143 Wood St.
- 72 A-4 Hopkins House
99 Russell St.
- 34 E-2 Howard House
145 Wood St.
- 44 D-4 John Bertram Hall
78 Campus Ave.
- 33 E-2 Leadbetter House
149 1/2 Wood St.
- 27 E-2 Milliken House
11 Campus Ave.
- 14 D-2 Mitchell House
250 College St.
- 69 A-3 Moody House
93 Russell St.
- 4 E-1 Moulton House
19 Frye St.
- 21 E-2 Nash House
227 College St.
- 79 C-1, C-2 New Student Housing
280 College St.
- 62 B-2 Page Hall
345 College St.
- 56 C-2 Parker Hall
1 Andrews Rd.
- 20 E-2 Parsons House
235 College St.
- 3 E-1 Pierce House
24 Frye St.
- 58 D-2 Rand Hall
270 College St.
- 48 C-3 Roger Williams Hall
50 Bardwell St.
- 71 A-4 Rzasa House
97 Russell St.
- 11 E-2 Small House
240 College St.
- 65 B-3 Smith Hall
61 Bardwell St.
- 26 E-2 Stillman House
154 Wood St.
- 18 E-2 Turner House
241 College St.
- 2 E-1 Webb House
17 Frye St.
- 66 B-3 Wentworth Adams Hall
71 Bardwell St.
- 28 D-2 Whittier House
13 Campus Ave.
- 5 E-1 Wilson House
28 Frye St.
- 23 E-2 Wood Street House
142 Wood St.

Residences

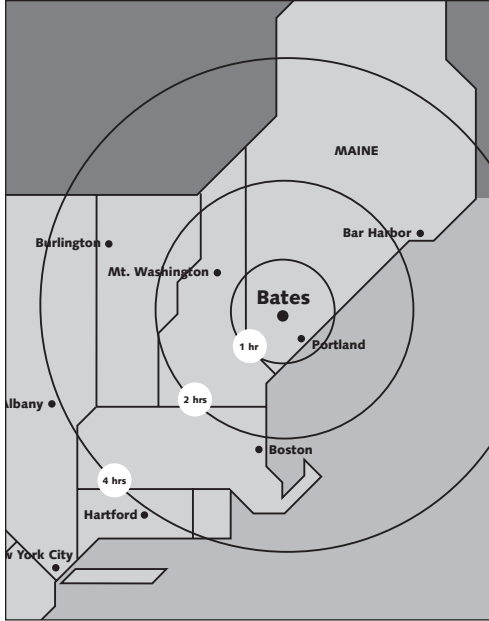
- 1 E-1 Chase House
16 Frye St.
- 16 D-2 Cheney House
262 College St.
- 19 E-2 Clason House
239 College St.
- 32 E-2 Davis House
151 Wood St.
- 9 E-1 Frye House
36 Frye St.
- 8 E-1 Frye Street Union
29 Frye St.



Key

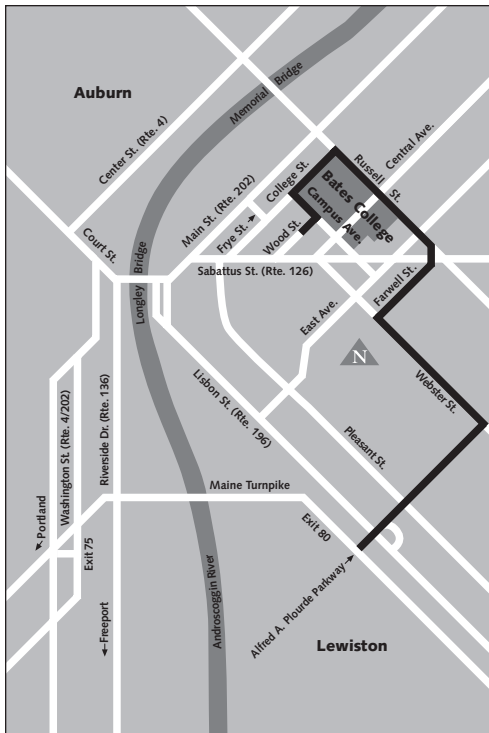
-  Handicapped Parking
-  Visitor Parking
-  Handicapped Accessible

MAP AND DIRECTIONS



Travel to Bates

Major airlines serve the Portland International Jetport, and Amtrak links Boston and Portland. Motor coach service to Lewiston from Portland and other points is provided by Greyhound affiliate Vermont Transit Lines.



Driving Directions

The College is located approximately three miles from Maine Turnpike Exit 80 (Lewiston Exit). Northbound travelers: Take Exit 80 and turn left onto Alfred A. Plourde Parkway at the stop sign at the end of the off-ramp. Southbound travelers: Take Exit 80 and bear right onto Plourde Parkway. All travelers: Continue on Plourde straight to stoplight at intersection of Plourde and Pleasant; continue on Plourde six-tenths of a mile to stoplight at Webster Street. Turn left onto Webster and travel one mile to stoplight at Farwell Street. Turn right onto Farwell and follow it six-tenths of a mile to stoplight. Head straight across intersection onto Russell Street and follow for nine-tenths of a mile to the third stoplight. Turn left onto College Street and follow to second blinking stoplight; turn left onto Campus Avenue. Take your first right onto Wood Street and turn right into the Admissions parking lot. The Admissions Office (Lindholm House) is at 23 Campus Avenue.

Bates values the diversity of persons, perspectives, and convictions. Critical thinking, rigorous analysis, and open discussion of a full range of ideas lie at the heart of the College's mission as an institution of higher learning. The College seeks to encourage inquiry and reasoned dialogue in a climate of mutual respect. Bates does not discriminate on the basis of race, color, national or ethnic origin, religion, sex, sexual orientation, gender identity or gender expression, marital or parental status, age, or disability, in the recruitment and admission of its students, in the administration of its educational policies and programs, or in the recruitment and employment of its faculty and staff.

© Bates College Office of Communications and Media Relations 8-07 / ADV / 07-716 / 2M / printed on recycled paper

Bates College
2 Andrews Road
Lewiston, ME 04240

www.bates.edu

