

SAPGUI for Windows Installation Guide

Purpose: This guide will walk through the process of installing SAPGUI for Windows for use with the UW-Milwaukee UCC hosting center. The installer file 'SAPGUI_800P2.exe' will install the latest version of SAPGUI. Additional add-ins and packages will be available upon request.

Supported Platforms:

- **Windows 10 32-bit/64-bit**
- **Windows 11 64-bit**

Note: The SAPGUI is not supported on ARM-based Windows PCs. ARM-based Windows devices that support 32-bit application virtualization may run SAPGUI, though it is not tested or supported.

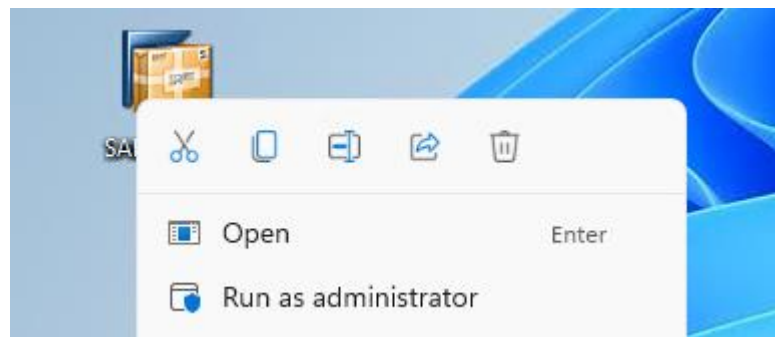
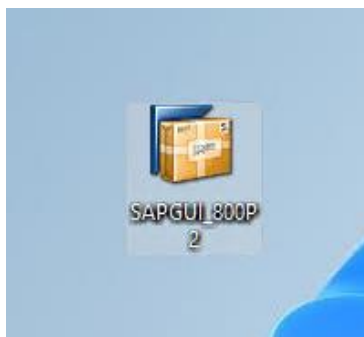
Preparation: Computers with older versions of SAPGUI installed may use the SAPGUI 800 installer to upgrade their existing installation. Uninstallation of old SAPGUI versions is not required.

Notice: Only one version of the SAPGUI can be installed on a computer at a time. If you currently have work issued SAP install, you will need to manually add the UWM system connections to the installed GUI. Your instructor can provide directions and connection information.

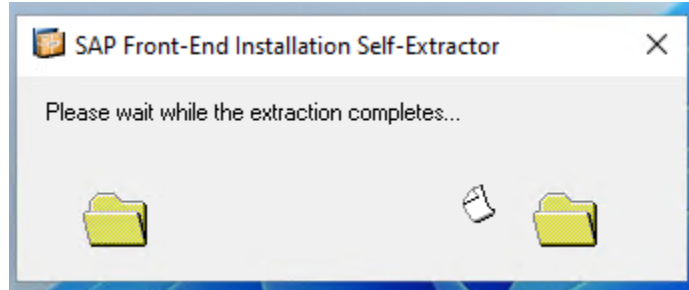
Procedure: The SAPGUI installer file can be downloaded from this link: [SAP GUI Installation Links](#)

Note: This installer file may trigger security warnings. Files downloaded from our site, linked in our attached documents, or provided by your instructor can be installed by ignoring these alerts.

Step 1: Download the SAPGUI installer file. Once you have the installer program on your computer, execute it by **right clicking** the icon pictured below and choose the option 'Run as Administrator':

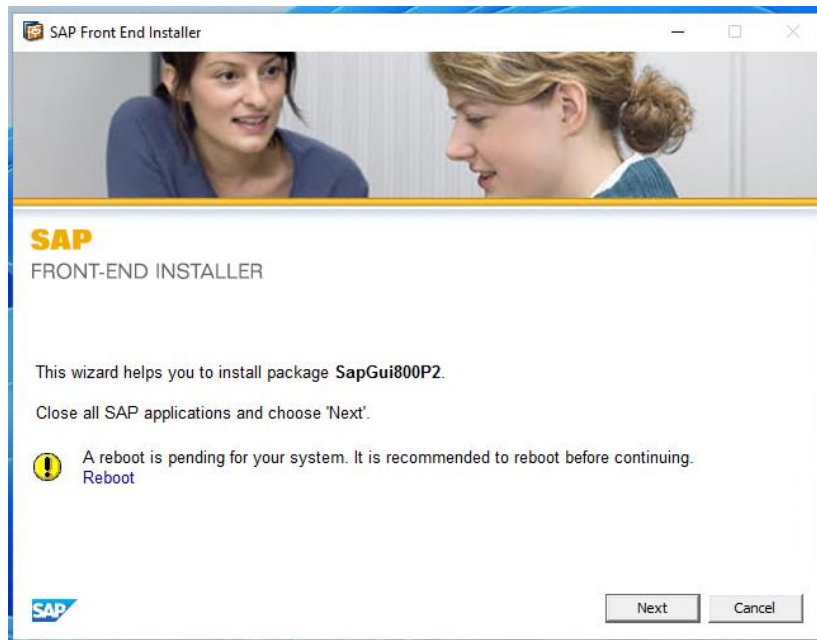


This will bring up SAP's Extraction notification. This may run for a few minutes depending on your machine.

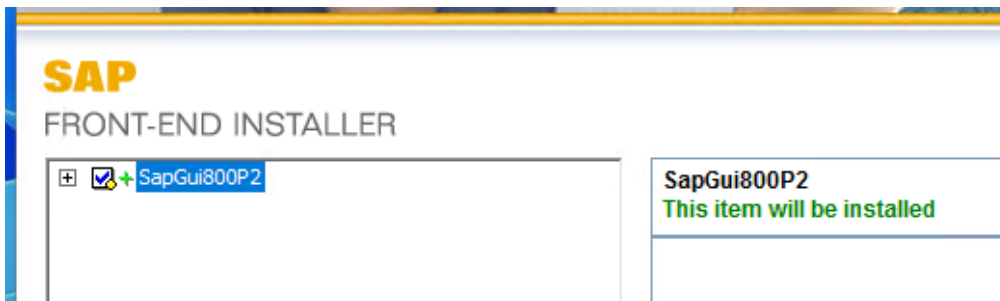


Step 2: SAP will present the Front-End Installer Screen. Press "Next" to continue.

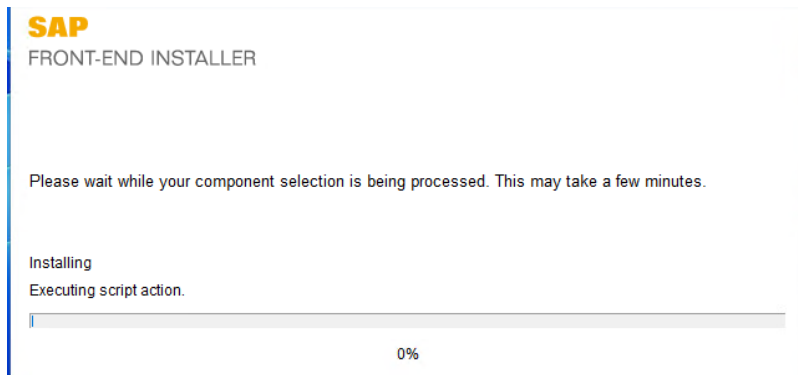
Note: You may see a "Reboot is pending for your system" message. You can reboot either reboot your machine or ignore this message.



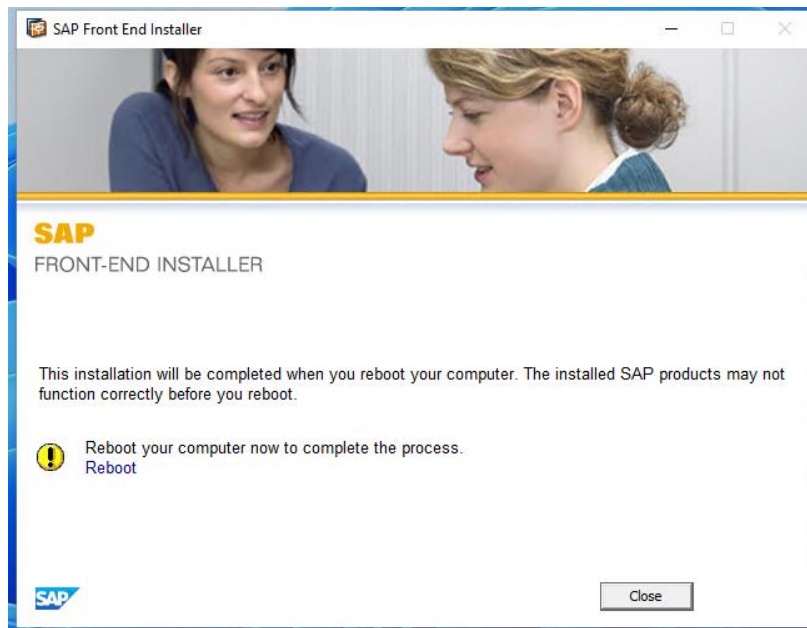
Step 3: Select the Check box next to SAPGUI800P2 to select the install, then press "Next"



SAPGUI will begin installing. You will see a progress bar during installation.

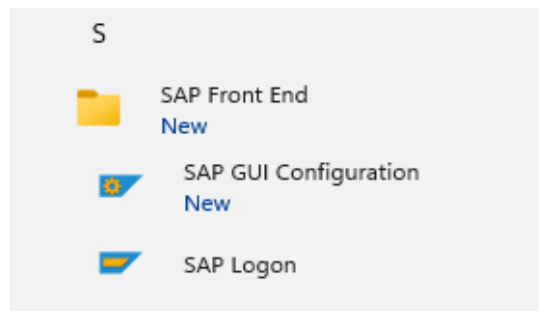


After a few minutes, the installation will be completed.



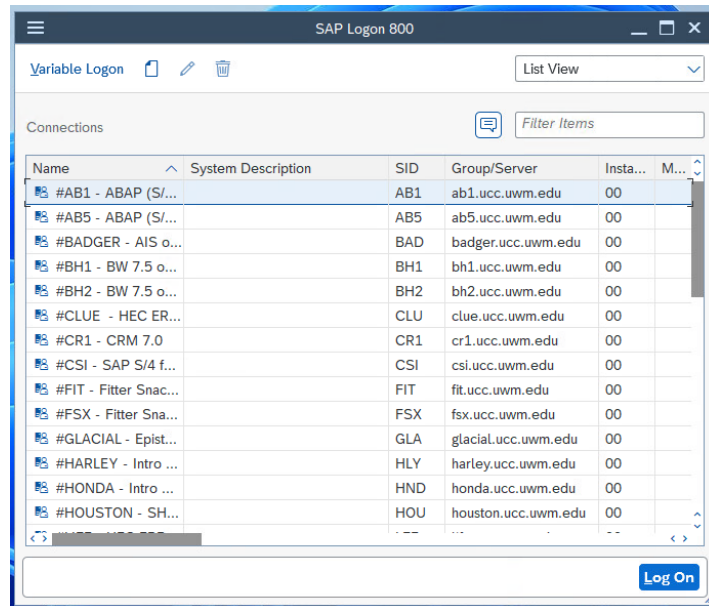
Press "Close" to close the installer. You should restart your computer after installation.

Confirmation: If the installation was successful, you will now have a shortcut on your desktop, and a new folder in your start menu.



Launch SAPGUI using the “SAP Logon” desktop icon or from your start menu. You will see the SAP Logon 800 screen.

(Our system names change periodically. You may not see the same systems in this list)



Your connection and Logon information will be provided by your instructor.

If you run into issues while installing the SAPGUI, review our troubleshooting guide for dealing with the most common issues during installation:

https://ucc.uwm.edu/uploadedFiles/downloads/7/WindowGUI_Troubleshoot.pdf

For further support, contact your instructor.

Additional Technical Requirements:

Those installing SAPGUI in a school lab computer may need to contact their campus network administrators to open the following ports for inbound and outbound communication:

- TCP 3200-3299
- TCP 3300-3399
- TCP 3600-3699