

Description of the Female of *Platynus kazuyoshii*  
(Coleoptera, Carabidae)

Shuhei YAMAMOTO

Faculty of Agriculture, Kyushu University, Fukuoka, 812–8581 Japan

**Abstract** The female of *Platynus kazuyoshii* MORITA et Y. KUROSA is described for the first time. Morphology of the female genitalia is compared with that of *P. magnus* (BATES).

**Key words:** Coleoptera; Carabidae; *Platynus*; description of female.

Seven species of the genus *Platynus* are known from Japan. Of these, *Platynus* (*Pseudoplatynus*) *kazuyoshii* MORITA et Y. KUROSA, 1994 can be distinguished from all the other species by rather narrow elytra and the large aedeagal apical lobe. This species is highly localized and was described on the basis of only male specimens collected from Chiba Prefecture, Central Japan (MORITA & KUROSA, 1994). After that, YAMAMOTO & WATANABE (2007) reported an additional record of this species including a discovery of the first female specimens. In this paper, I am going to describe the female of *Platynus kazuyoshii* based on the specimens collected by myself.

The abbreviations used herein are as follows: BL – body length (from apical margin of clypeus to apices of elytra); EL – greatest length of elytra; EW – greatest width of elytra; HW – greatest width of head; PA – width of pronotal apex; PB – width of pronotal base; PL – length of pronotum, measured along the mid-line; PW – greatest width of pronotum.

Before going further, I wish to express my deep gratitude to Dr. Munetoshi MARUYAMA of the Kyushu University Museum, Fukuoka for his critical reading and commenting on the manuscript.

*Platynus* (*Pseudoplatynus*) *kazuyoshii* MORITA et Y. KUROSA, 1994

(Table 1, Figs. 1–2)

*Platynus kazuyoshii* MORITA et Y. KUROSA, 1994, p. 585; type locality: Shiigi, Misaki-machi, Chiba Prefecture, Central Japan

*Specimens examined.* 10 ♂♂, 6 ♀♀, Shiigi, Isumi-shi (former name: Misaki-machi), Chiba Prefecture, Central Japan, 16–II–2008, S. YAMAMOTO leg. (deposited in the author's collection).

*Description.* Female. Similar to male in general appearance. Genitalia (Fig. 1):

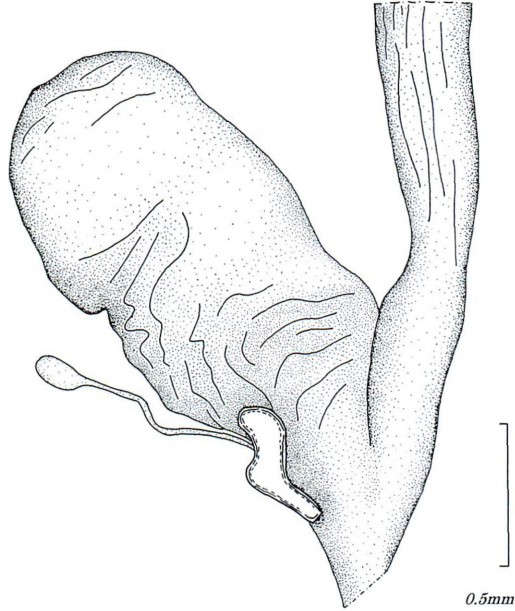


Fig. 1. Female genitalia of *Platynus kazuyoshii*.

Table 1. Measurements and standard ratios of *Platynus kazuyoshii* (n=10 in male, n=6 in female).

	Male	Female
BL	10.11-11.88 (11.37±0.52) mm	10.75-12.13 (11.65±0.52) mm
HW	2.06- 2.19 ( 2.12±0.05) mm	2.06- 2.19 ( 2.14±0.05) mm
PW	2.44- 2.75 ( 2.58±0.11) mm	2.13- 2.63 ( 2.49±0.19) mm
PL	1.94- 2.25 ( 2.10±0.10) mm	2.06- 2.13 ( 2.07±0.05) mm
PA	1.56- 1.94 ( 1.76±0.11) mm	1.63- 1.88 ( 1.76±0.09) mm
PB	1.75- 2.06 ( 1.91±0.11) mm	1.94- 2.06 ( 1.94±0.11) mm
EW	4.25- 4.56 ( 4.39±0.11) mm	4.38- 4.81 ( 4.62±0.17) mm
EL	6.63- 7.50 ( 7.07±0.28) mm	6.50- 8.29 ( 7.40±0.61) mm
PW/HW	1.17- 1.28 ( 1.22±0.88)	1.18- 1.24 ( 1.20±0.24)
PW/PL	1.11- 1.31 ( 1.23±0.034)	1.00- 1.28 ( 1.24±0.025)
PW/PA	1.33- 1.72 ( 1.47±0.12)	1.40- 1.58 ( 1.46±0.065)
PW/PB	1.21- 1.50 ( 1.33±0.12)	1.24- 1.45 ( 1.32±0.082)
PA/PB	0.83- 1.11 ( 0.91±0.12)	0.79- 1.00 ( 0.91±0.07)
EW/PW	1.65- 1.80 ( 1.70±0.051)	1.70- 1.85 ( 1.80±0.056)
EL/EW	1.45- 1.71 ( 1.61±0.079)	1.45- 1.79 ( 1.60±0.12)

bursa copulatrix oblong-oval; spermatheca gently curved twice widened in apical half, moderately sclerotized, dilated apically; spermathecal gland long, more than 1.5 times as long as spermatheca, attached to apical 1/4 and dorsal side of spermatheca, apical part bulbous, 1/5 as long as whole spermathecal gland.

*Remarks.* The female is distinguished from the male by the following character

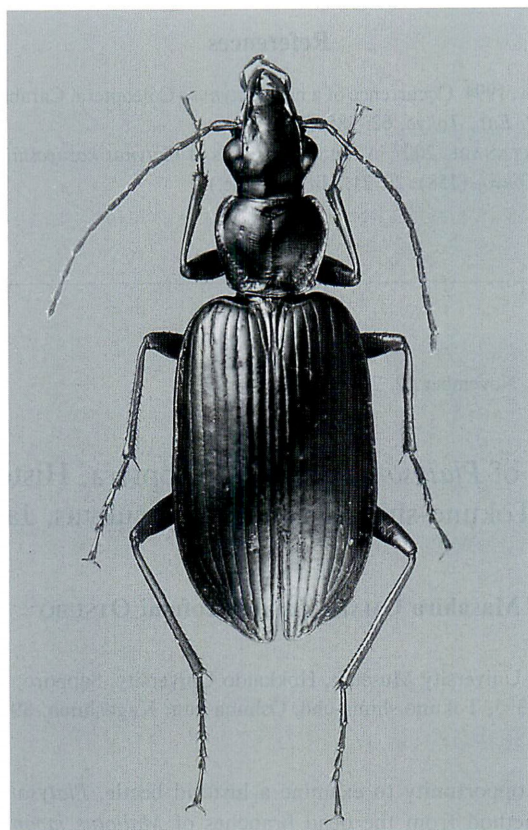


Fig. 2. Female of *Platynus kazuyoshii*, dorsal view.

states: 1) body larger than the average of male; 2) larger value of the ratio EW/PW (Table 1); 3) fore tarsus thinner, with cilia sparser. No distinct difference was observed in the other measurements (Table 1).

Among the sympatric species, *P. kazuyoshii* is closely similar to *P. magnus* (BATES, 1873), but is distinguished from it by the spermatheca narrower and the apical part of the spermathecal grand more bulbous and shorter.

### 要 約

山本周平: カズサヒラタゴミムシ雌の記載。—— *Platynus kazuyoshii* MORITA et Y. KUROSA は雄のみで記載されていたので、ここに雌の記載と追加記録をおこなった。また、同属の *P. magnus* (BATES) との比較もおこない、両種の雌交尾器には差異が認められることを明らかにした。

## References

- MORITA, S., & Y. KUROSA, 1994. Occurrence of a new *Platynus* (Coleoptera, Carabidae) in Chiba Prefecture, Central Japan. *Jpn. J. Ent., Tokyo*, **62**: 585–590.
- YAMAMOTO, S., & K. WATANABE, 2007. Additional records of *Platynus kazuyoshii* MORITA et Y. KUROSA. *Coleopterists' News, Tokyo*, (158): 20–21. (In Japanese.)

*Elytra, Tokyo*, **36**(2): 360, November 22, 2008

New Record of *Platysoma rasile* (Coleoptera, Histeridae) from  
the Tokuno-shima Island, the Ryukyus, Japan

Masahiro ÔHARA<sup>1)</sup> and Hirofumi OTSUBO<sup>2)</sup>

<sup>1)</sup> The Hokkaido University Museum, Hokkaido University, Sapporo, 060–0810 Japan

<sup>2)</sup> Kametsu 853–5, Tokuno-shima-chô, Ôshima-gun, Kagoshima, 891–7101 Japan

We have had the opportunity to examine a histerid beetle, *Platysoma* (*Platysoma*) *rasile*, collected by beating method from the dead branches of *Mallotus japonicus* (THUNB.) MÜLL. ARG., from Tokuno-shima Island, the Ryukyus, Japan. This species has not been hitherto recorded from the Island. The collecting data are as given below.

*Platysoma* (*Platysoma*) *rasile* LEWIS, 1912

*Platysoma* (*Platysoma*) *rasile*: HISAMATSU, 1985, 228 [Tanega-shima, Tokara-nakano-shima]. — ÔHARA, 1986, 96 [Tokara-akuseki-jima, Amami-Ôshima].

*Specimens examined.* Japan: Ryukyu. [Tokuno-shima] 3 exs., Tete, 8–VI–2008, H. OTSUBO.

*Distribution.* Japan (Honshu; Shikoku; Kyushu; Tsushima; Tanega-shima; Ryukyu: Tokara-nakano-shima, Tokara-akuseki-jima, Amami-Ôshima, Tokuno-shima). New to Tokuno-shima.

## References

- HISAMATSU, S., 1985. Histeridae. In UÉNO, S.-I., et al. (eds.), *The Coleoptera of Japan in Color*, **2**: 220–231 [incl. pls. 40–41]. Hoikusha, Osaka. (In Japanese with English book title.)
- ÔHARA, M., 1986. On the genus *Platysoma* from Japan. *Pap. Ent. pres. NAKANE, Tokyo*, pp. 91–106.