

New Record of *Philonthus nigrita* (GRAVENHORST, 1806) (Coleoptera, Staphylinidae, Staphylininae) from Japan

Yasuhiko HAYASHI

Suimeidai 3–1–73, Kawanishi City, Hyôgo, 666–0116 Japan

Although *Philonthus (Philonthus) nigrita* is widely recorded from Europe to East Siberia, it has not been recorded from East Asia. This paper reports a new record of this species from Japan. This is the first report of this species from East Asia.

Philonthus (Philonthus) nigrita (GRAVENHORST, 1806)

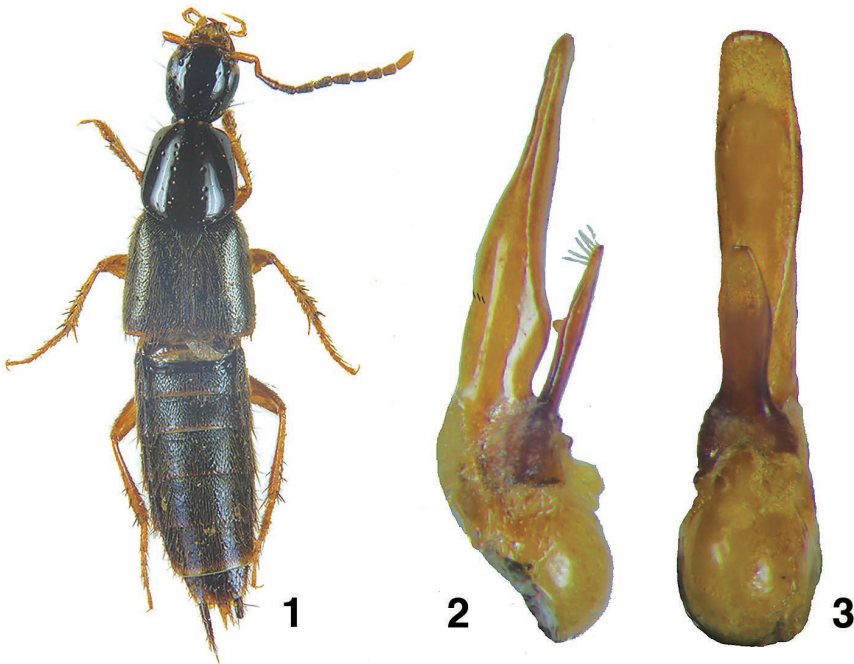
(Figs. 1–3)

Staphylinus nigrita GRAVENHORST, 1806: 68 (Type locality: not cited).

Philonthus nigrita: NORDMANN, 1837: 101; COIFFAIT, 1974: 274.

Other references, see HERMAN, 2001: 2890.

Specimens examined. 1 ex., Riv. Yodo, Osaka Pref., 24.V.1959, Y. KIMURA leg.; 1 ex., ditto, 23.X.1958, Y. KIMURA leg.; 3 exs., ditto, 10.IV.1959, Y. KIMURA leg.; 1 ex., ditto, 28.IX.1958, K. UEDA leg.; 1 ex., ditto, 5.V.1968, T. ITO leg.; 1 ex., ditto, 3.IV.1956, Y. HAYASHI leg.; 1 ex., ditto, 9.VII.1958, Y. HAYASHI leg.; 1 ex., ditto,



Figs. 1–3. *Philonthus nigrita* (GRAVENHORST). — 1, Habitus; 2, male genitalia, lateral view; 3, ditto, ventral view.

1.X.1958, Y. HAYASHI leg.; 1 ex., ditto, 24.VII.1971, Y. HAYASHI leg.; 1 ex., Riv. Yodo, Makino, Osaka, 15.IV.1956, T. SHIBATA leg.; 1 ex., ditto, 24.VIII.1975, T. ITO leg.; 1 ex., Riv. Yodo, Moriguchi, Osaka, 19.IX.1965, T. ITO leg.; Riv. Yamato, Osaka, 1.VIII.1959, N. OHTANI leg.; 1 ex., Mt. Amaishiyama, Sasayama C., Hyôgo Pref., 28.V.1989, N. ITO leg.; 1 ex., Riv. Tenryûgawa, Ina C., Nagano Pref., 4.VII.1999, Y. HAYASHI leg.; 1 ex., Adachi, Tokyo Pref., 22.IV.1968, Y. IMAI leg.; 5 exs., Riv. Tone, Saitama Pref., 12.V.1968, Y. IMAI leg.

Distribution. Europe; the Near and Middle East; Central Asia; West and East Siberia; Japan (new record).

Diagnosis. Median rows of setiferous punctures on pronotum each consisting of six punctures; head oblong-oval, slightly narrower than pronotum, and eyes large, nearly as long as postgenae; pronotum convergent anteriorly; elytra feebly convex, sparsely punctured, covered with rather sparse, pale brownish pubescence, with obscurely greenish weak luster; male genitalia as in Fig. 2, without peg-setae on parameres; abdomen rather densely and finely punctured on tergites, which are narrowly reddish yellow at each apical margin.

This species is apparently similar to *Philonthus prolatus* SHARP.

References

- COIFFAIT, H., 1974. Coléoptères staphylinides de la région paléarctique occidentale II. Sous famille Staphylininae, Tribus Philonthini et Staphylinini. *Nouvelle Revue d'entomologie. Supplément*, 4 (4): 1–593.
- GRAVENHORST, J. L. C., 1806. *Monographia Coleopterorum Micropteriorum*. 248 pp. Gottingae: Henricus Dieterich.
- HERMAN, L. H., 2001. Catalogue of the Staphylinidae (Insecta: Coleoptera). 1758 to the end of the second millennium. V. Staphylinine group (part 2): v + 2,441–3,020.
- NORDMANN, A. von, 1837. *Symbolae ad monographiam staphylinorum*. Ex *Academiae Caesareae Scientiarum*, 4: 1–167. Petropoli: Academiae Caesareae Scientiarum.

Manuscript received 24 March 2016;
revised and accepted 26 April 2016.