

First contribution to the study of lepidopteran fauna (Insecta: Lepidoptera) from Stâncă, Iași, Moldova region (Romania)

Cosmin-Ovidiu MANCI^{1,2}, Cristian SITAR³, Constantin CORDUNEANU⁴ and Cătălin BALAN⁵

¹ OP3, CP719, 700213 Iași, Romania, cosminom@gmail.com

² S.E.O.P.M.M. Oceanic-Club, Constanța

³ Muzeul Zoologic, Universitatea Babeș Bolyai, 5/7 Clinicilor St., 400006 Cluj-Napoca, cristiansitar@yahoo.com

⁴ “Dimitrie Negreanu” High School Botoșani, 9 Dimitrie Ralet St., 710202 Botoșani, Romania, e-mail: corduneanuc@yahoo.com

⁵ “Gheorghe Asachi” Technical University, Faculty of Chemical Engineering and Environmental Protection, 73 Prof. Dr. Docent Dimitrie Mangeron St., 700050 Iași, Romania, e-mail: catalinbalan9@yahoo.es

Abstract / Rezumat

First contribution to the study of lepidopteran fauna (Insecta: Lepidoptera) from Stâncă, Iași (Romania)

With this papers the authors present a first contribution to the knowledge of lepidopteran fauna (Insecta: Lepidoptera) from Stâncă, Comarna, Iași County. All data from Stâncă, Comarna, Iași County were gathered mostly in 2014. The locality is situated in North-East of Romania near Prut River, at cca 20 km South-East of Iași city, in the Moldavian Plain and is part of Continental biogeographical region. In this first year of study a number of 342 species of Lepidoptera were recorded. The following species have been recorded for the first time in the region of Moldova: *Ancylolomia tentaculella* (Hübner, 1796), *Chrysodeixis chalcites* (Esper, 1789), *Cucullia xeranthemi* Boisduval, 1840, *Cucullia gnaphalii* (Hübner, 1813), *Cucullia dracunculi* (Hübner, 1813) and *Mythimna congrua* (Hübner, 1817).

Key words: Lepidoptera, new records, distribution, faunistic, Romania.

Prima contribuție la studiul faunei de lepidoptere (Insecta: Lepidoptera) din zona localității Stâncă (jud. Iași) (România)

Prin această lucrare autorii prezintă pentru prima oară o contribuție asupra faunei de lepidoptere (Insecta: Lepidoptera) din zona localității Stâncă (comuna Comarna, județul Iași). Datele din zona localității Stâncă au fost colectate mai ales în 2014. Localitatea este situată în NE-ul României lângă Râul Prut, la cca 20 km SE de localitatea Iași, în Câmpia Moldovei și este parte a bioregiunii continentale. În acest prim an de studiu au fost găsite 342 specii de fluturi. Următoarele specii au fost colectate pentru prima oară în regiunea Moldova: *Ancylolomia tentaculella* (Hübner, 1796), *Chrysodeixis chalcites* (Esper, 1789), *Cucullia xeranthemi* Boisduval, 1840, *Cucullia gnaphalii* (Hübner, 1813), *Cucullia dracunculi* (Hübner, 1813) și *Mythimna congrua* (Hübner, 1817).

Cuvinte cheie: Lepidoptera, date noi, distribuție, faunistică, România.

Introduction

Fauna of Moldova region is relatively poorly known, with the exception of the

northern part of the region where new researches are done continuously (Székely, 1992; Corduneanu 2014; Corduneanu & all, 2007; Corduneanu & all, 2011, 2012, 2013,

2015), almost everything else is known today is from specimens stored in Alexei Alexinschi collection (Nemeş & Dănilă, 1970; Nemeş & Voicu, 1971 and Nemeş & Voicu, 1973).

Stâncă locality is situated in the middle of the region near the Prut River (at cca 20 km South-East from Iaşi city) in the continental bioregion. The researched area is a mosaic of different habitats: wet areas (most of them man made and with water only in the spring), steppe like area (grazed or not), shrubs, patches of forests with a very high diversity (mainly from plantations). The altitude is in average of cca 80 m, with a maximum of cca 130 m and a minimum of cca 25 m. The terrain is very rough with a lot of forms of erosion and small depression that fill with water in the spring and contribute to the biological diversity of the region. The climate in the area is characterized by almost continuous winds all year long mostly from south-west or north-east that contribute to a dry climate, precipitation almost only in spring and autumn and with summers that are very hot and dry.

Material and methods

Lepidoptera species were observed, photographed and/or collected from October 2013 to October 2014.

Lepidoptera species were collected using active methods: in day time using an entomological net on transects and at night were attracted with the help of mercury lamp at light sheet 160W lamp. Also passive methods were used; self collecting traps for night flying species, for this being used a trap with a tube of 12W UV (ultraviolet light). Specimens were photographed in studio with various lenses appropriate for the specimen size and with two studio flashes. The killing of collected specimens was done with vapours of ethyl acetate in a glass jar (Rakosy, 2013) and, for some species that cannot be reliably identified based exclusively on wing morphology, a genitalia was prepared. The process for genitalia preparation had few steps: maceration (at cold or boiling) in 10% potassium hydroxide, followed by cleaning and examination under a stereomicroscope and finally storage in tubes with glycerine for future reference (Clarke, 1941; Robinson, 1976). Material collected is stored in authors

collections but also in several others collections: Carol Bere (Cluj-Napoca, Romania), Marius Aurelian (Buzau, Romania), Viorel Ungureanu (Buzau, Romania), Yasunori Kishida (Japan), Jean Haxaire (France) and Jorma Pets (Estonia).

Main collecting spot for Stâncă is at the following coordinates: 47.0698°N and 27.8038°E, at an altitude of 50 m.

Identification was done with several books (Rakosy, 1996 for Noctuidae; Rakosy, 2013 for Rhopalocera; Koch, 1991 Macrolepidoptera in general; Pyraloidea with Slamka, 2006, 2008 & 2010 and Geometridae with Hausmann, 2001, 2004, Hausmann & Viidalepp, 2012 and Mironov, 2003).

Presence or absence in the region was checked mainly with Rakosy & all, 2003 but also with new published works (Rakosy & Goia, 2006). Red List status was checked with Rakosy & all, 2003.

Taxonomic names and classification was the one used in FaunaEuropea website (Jong & all, 2014).

In this first contribution only species that belongs to Macrolepidoptera and few Microlepidoptera (Hepialidae, Peleopodidae, Limacodidae, Cossidae, Carposinidae and Pyraloidea) were recorded. Day flying species were only marginally observed, this being the reason that for now only few species are recorded. More specimens that belong to Microlepidoptera species are collected and determination is in work and will be the subject of future works.

Results and discussions

In the area of Stâncă locality 342 species of Lepidoptera were observed, photographed and collected from October 2013 to October 2014 (see Table 1). Abbreviations (in "Observations/Red List" column) used in table are: C - collected, P - photographed, O - observed, * - rare species or known only from old data for the region, ** - new species for the region, ! - species of conservative interest, CR - critical endangered, EN - endangered, VU - vulnerable, NT - near threatened, DD - data deficient and LC - least concern.

The order of species and numbers are the ones used in Rakosy & all, 2003 with the exception of the species grouped in family

Erebidae. *Cilix asiatica* A. Bang-Haas, 1907 and *Acontia candefacta* (Hübner, 1831) are

without number as those were not yet known from Romania in 2003.

Table 1

Lepidoptera species collected in Stâncea locality area from October 2013 to October 2014

	RO No	Family	Species name		Obs., RL	
1	25	Hepialidae	<i>Triodia sylvina</i> (Linnaeus, 1761)	C, P		
2	1049	Peleopodidae	<i>Carcina quercana</i> (Fabricius, 1775)	C, P	*	
3	1722	Limacodidae	<i>Apoda limacodes</i> (Hufnagel, 1766)	C, P		
4	1867	Cossidae	<i>Zeuzera pyrina</i> (Linnaeus, 1761)	P		
5	1869		<i>Phragmataecia castaneae</i> (Hübner, 1790)	C, P		
6	2702	Carposinidae	<i>Carposina scirrhosella</i> Herrich-Schäffer, 1854	C, P	*	
7	2717	Pyralidae	<i>Aphomia zelleri</i> Joannis, 1932	C, P		
8	2725		<i>Galleria mellonella</i> (Linnaeus, 1758)	C, P		
9	2735		<i>Pyralis regalis</i> Denis & Schiffermüller, 1775	C, P		
10	2737		<i>Pyralis farinalis</i> (Linnaeus, 1758)	C		
11	2749		<i>Hypsopygia costalis</i> (Fabricius, 1775)	C, P		
12	2755		<i>Hypsopygia glaucinalis</i> (Linnaeus, 1758)	C, P		
13	2757		<i>Endotricha flammealis</i> (Denis & Schiffermüller, 1775)	C, P		
14	2797		<i>Etiella zinckenella</i> (Treitschke, 1832)	C, P		
15	2804		<i>Oncocera semirubella</i> (Scopoli, 1763)	C, P		
16	2878		<i>Myelois circumvoluta</i> (Fourcroy, 1785)	C, P		
17	2956		<i>Phycitodes binaevella</i> (Hübner, 1813)	C, P		
18	2994		Crambidae	<i>Scoparia subfusca</i> Haworth, 1811	C, P	
19	3020			<i>Euchromius ocella</i> (Haworth, 1811)	C, P	*
20	3021			<i>Euchromius bella</i> (Hübner, 1796)	C, P	*
21	3030	<i>Friedlanderia cicatricella</i> (Hübner, 1824)		C, P	*	
22	3036	<i>Calamotropha paludella</i> (Hübner, 1824)		C, P		
23	3054	<i>Agriphila tristella</i> (Denis & Schiffermüller, 1775)		C, P		
24	3061	<i>Agriphila hungaricus</i> (A. Schmidt, 1909)		C, P	*	
25	3074	<i>Catoptria pinella</i> (Linnaeus, 1758)		C, P		
26	3087	<i>Metacrambus carectellus</i> (Zeller, 1847)		C, P	*	
27	3093	<i>Chrysocrambus craterella</i> (Scopoli, 1763)		P		
28	3110	<i>Ancylolomia tentaculella</i> (Hübner, 1796)		C, P	**	
29	3121	<i>Scirpophaga praelata</i> (Scopoli, 1763)		C, P	*	
30	3132	<i>Cataclysta lemnaea</i> (Linnaeus, 1758)		C, P		
31	3134	<i>Parapoynx stratiotata</i> (Linnaeus, 1758)		C, P		
32	3145	<i>Cynaeda dentalis</i> (Denis & Schiffermüller, 1775)		C, P		
33	3208	<i>Loxostege sticticalis</i> (Linnaeus, 1761)		C		
34	3222	<i>Pyrausta sanguinalis</i> (Linnaeus, 1767)		C, P		
35	3224	<i>Pyrausta despicata</i> (Scopoli, 1763)		C, P		
36	3228	<i>Pyrausta purpuralis</i> (Linnaeus, 1758)		C, P		
37	3258	<i>Sclerocona acutella</i> (Eversmann, 1842)		C, P		
38	3263	<i>Ostrinia nubilalis</i> (Hübner, 1796)		C		
39	3276	<i>Pleuroptya ruralis</i> (Scopoli, 1763)		C, P		
40	3289	<i>Palpita vitrealis</i> (Rossi, 1794)		C, P		
41	3304	<i>Nomophila noctuella</i> (Denis & Schiffermüller, 1775)		C, P		

	RO No	Family	Species name		Obs., RL
42	3311	Lasiocampidae	<i>Trichiura crataegi</i> (Linnaeus, 1758)	C, P	VU
43	3314		<i>Eriogaster lanestris</i> (Linnaeus, 1758)	C, P	*, VU
44	3318		<i>Malacosoma neustria</i> (Linnaeus, 1758)	C	NT
45	3325		<i>Macrothylacia rubi</i> (Linnaeus, 1758)	C, P	NT
46	3334		<i>Phyllodesma tremulifolia</i> (Hübner, 1810)	C, P	NT
47	3336		<i>Gastropacha quercifolia</i> (Linnaeus, 1758)	C, P	NT
48	3339		<i>Odonestis pruni</i> (Linnaeus, 1758)	C, P	NT
49	3350	Saturniidae	<i>Saturnia pyri</i> (Denis & Schiffermüller, 1775)	C, P	VU
50	3358	Brahmaeidae	<i>Lemonia dumi</i> (Linnaeus, 1761)	C, P	*, EN
51	3368	Sphingidae	<i>Smerinthus ocellata</i> (Linnaeus, 1758)	C	
52	3370		<i>Laothoe populi</i> (Linnaeus, 1758)	C	
53	3377		<i>Sphinx ligustri</i> Linnaeus, 1758	C, P	NT
54	3381		<i>Dolbina elegans</i> A. Bang-Haas, 1912	C, P	*, EN
55	3388		<i>Macroglossum stellatarum</i> (Linnaeus, 1758)	O	
56	3392		<i>Proserpinus proserpina</i> (Pallas, 1772)	C, P	!, VU
57	3394		<i>Hyles euphorbiae</i> (Linnaeus, 1758)	O	NT
58	3397		<i>Hyles hippophaes</i> (Esper, 1789)	C, P	*, !, VU
59	3401		<i>Deilephila porcellus</i> (Linnaeus, 1758)	C, P	
60	3410	Hesperiidae	<i>Erynnis tages</i> (Linnaeus, 1758)	O	
61	3412		<i>Carcharodus alceae</i> (Esper, 1780)	C	
62	3450	Papilionidae	<i>Zerynthia polyxena</i> (Denis & Schiffermüller, 1775)	C, P	!, EN
63	3458		<i>Iphiclides podalirius</i> (Linnaeus, 1758)	C	VU
64	3464	Pieridae	<i>Leptidea sinapis</i> (Linnaeus, 1758)	C, P	
65	3476		<i>Pieris brassicae</i> (Linnaeus, 1758)	O	VU
66	3478		<i>Pieris rapae</i> (Linnaeus, 1758)	C, P	
67	3484		<i>Pontia edusa</i> (Fabricius, 1777)	C, P	
68	3488		<i>Colias erate</i> (Esper, 1805)	C, P	VU
69	3489		<i>Colias croceus</i> (Fourcroy, 1785)	C	
70	3493		<i>Colias alfacariensis</i> Ribbe, 1905	C	NT
71	3510	Lycaenidae	<i>Lycaena thersamon</i> (Esper, 1784)	C, P	VU
72	3567		<i>Aricia agestis</i> (Denis & Schiffermüller, 1775)	C, P	
73	3578		<i>Polyommatus icarus</i> (Rottemburg, 1775)	C, P	
74	3581		<i>Polyommatus bellargus</i> (Rottemburg, 1775)	C	NT
75	3637	Nymphalidae	<i>Melitaea phoebe</i> (Denis & Schiffermüller, 1775)	C	NT
76	3684		<i>Maniola jurtina</i> (Linnaeus, 1758)	O	
77	3723	Drepanidae	<i>Thyatira batis</i> (Linnaeus, 1758)	C, P	
78	3725		<i>Habrosyne pyritoides</i> (Hufnagel, 1766)	C, P	
79	3727		<i>Tethea ocularis</i> (Linnaeus, 1767)	C, P	NT
80	3736		<i>Polyplocia ridens</i> (Fabricius, 1787)	C, P	NT
81	3753		<i>Cilix glaucata</i> (Scopoli, 1763)	C, P	
82			<i>Cilix asiatica</i> A. Bang-Haas, 1907	C, P	*
83	3769	Geometridae	<i>Ligdia adustata</i> (Denis & Schiffermüller, 1775)	C	
84	3774		<i>Heliomata glarearia</i> (Denis & Schiffermüller, 1775)	C, P	
85	3777		<i>Macaria alternata</i> (Denis & Schiffermüller, 1775)	C	
86	3784		<i>Chiasmia clathrata</i> (Linnaeus, 1758)	C	
87	3786		<i>Chiasmia aestimaria</i> (Hübner, 1809)	C, P	*, VU

	RO No	Family	Species name		Obs., RL
88	3797		<i>Isturgia murinaria</i> (Denis & Schiffermüller, 1775)	C, P	*, NT
89	3798		<i>Isturgia arenacearia</i> (Denis & Schiffermüller, 1775)	C, P	NT
90	3800		<i>Gnopharmia stevenaria</i> (Boisduval, 1840)	C, P	*, NT
91	3806		<i>Plagodis pulveraria</i> (Linnaeus, 1758)	C	
92	3807		<i>Plagodis dolabraria</i> (Linnaeus, 1767)	C	NT
93	3809		<i>Opisthograptis luteolata</i> (Linnaeus, 1758)	C	NT
94	3818		<i>Eilicrinia cordiaria</i> (Hübner, 1790)	C, P	*, NT
95	3819		<i>Eilicrinia trinotata</i> (Metzner, 1845)	C	*, NT
96	3825		<i>Ennomos autumnaria</i> (Werneburg, 1859)	C, P	
97	3828		<i>Ennomos fuscantaria</i> (Haworth, 1809)	C, P	NT
98	3829		<i>Ennomos erosaria</i> (Denis & Schiffermüller, 1775)	C	NT
99	3833		<i>Selenia lunularia</i> (Hübner, 1788)	C, P	NT
100	3842		<i>Crocallis tusciaria</i> (Borkhausen, 1793)	C, P	*, NT
101	3849		<i>Colotois pennaria</i> (Linnaeus, 1761)	C, P	
102	3853		<i>Apocheima hispidaria</i> (Denis & Schiffermüller, 1775)	C, P	NT
103	3854		<i>Phigalia pilosaria</i> (Denis & Schiffermüller, 1775)	C, P	NT
104	3856		<i>Lycia hirtaria</i> (Clerck, 1759)	C, P	NT
105	3860		<i>Biston strataria</i> (Hufnagel, 1767)	C, P	NT
106	3861		<i>Biston betularia</i> (Linnaeus, 1758)	C, P	
107	3863		<i>Agriopsis leucophaearia</i> (Denis & Schiffermüller, 1775)	C, P	NT
108	3864		<i>Agriopsis bajaria</i> (Denis & Schiffermüller, 1775)	C, P	NT
109	3866		<i>Agriopsis marginaria</i> (Fabricius, 1776)	C	
110	3868		<i>Erannis defoliaria</i> (Clerck, 1759)	P	
111	3881		<i>Synopsia sociaria</i> (Hübner, 1799)	C, P	
112	3885		<i>Peribatodes rhomboidaria</i> (Denis & Schiffermüller, 1775)	C, P	
113	3903		<i>Hypomecis roboraria</i> (Denis & Schiffermüller, 1775)	C	
114	3910		<i>Ascotis selenaria</i> (Denis & Schiffermüller, 1775)	C, P	
115	3912		<i>Ectropis crepuscularia</i> (Denis & Schiffermüller, 1775)	C, P	
116	3920		<i>Ematurga atomaria</i> (Linnaeus, 1758)	C	
117	3935		<i>Theria rupicaprararia</i> (Denis & Schiffermüller, 1775)	C, P	*, NT
118	3937		<i>Campaea margaritaria</i> (Linnaeus, 1761)	P	
119	3997		<i>Alsophila aescularia</i> (Denis & Schiffermüller, 1775)	C, P	
120	3998		<i>Alsophila aceraria</i> (Denis & Schiffermüller, 1775)	P	NT
121	4013		<i>Thetidia smaragdaria</i> (Fabricius, 1787)	C, P	
122	4017		<i>Chlorissa viridata</i> (Linnaeus, 1758)	C, P	
123	4024		<i>Thalera fimbrialis</i> (Scopoli, 1763)	C, P	
124	4026		<i>Hemistola chrysoprasaria</i> (Esper, 1795)	C	
125	4033		<i>Cyclophora albiocellaria</i> (Hübner, 1789)	C, P	NT
126	4034		<i>Cyclophora annularia</i> (Fabricius, 1775)	C, P	NT
127	4037		<i>Cyclophora ruficiliaria</i> (Herrich-Schäffer, 1855)	C, P	VU
128	4044		<i>Timandra comae</i> Schmidt, 1931	C, P	
129	4046		<i>Scopula immorata</i> (Linnaeus, 1758)	C	
130	4047		<i>Scopula tessellaria</i> (Boisduval, 1840)	C, P	*, VU
131	4052		<i>Scopula nigropunctata</i> (Hufnagel, 1767)	C	NT
132	4053		<i>Scopula virgulata</i> (Denis & Schiffermüller, 1775)	C, P	*
133	4057		<i>Scopula rubiginata</i> (Hufnagel, 1767)	C, P	

	RO No	Family	Species name		Obs., RL
134	4059		<i>Scopula marginepunctata</i> (Goeze, 1781)	C, P	
135	4064		<i>Scopula flaccidaria</i> (Zeller, 1852)	P	NT
136	4073		<i>Idaea rufaria</i> (Hübner, 1799)	C, P	NT
137	4077		<i>Idaea ochrata</i> (Scopoli, 1763)	C	NT
138	4081		<i>Idaea rusticata</i> (Denis & Schiffermüller, 1775)	C	NT
139	4096		<i>Idaea dimidiata</i> (Hufnagel, 1767)	C, P	
140	4105		<i>Idaea aversata</i> (Linnaeus, 1758)	C, P	
141	4111		<i>Rhodostrophia vibicaria</i> (Clerck, 1759)	P	
142	4135		<i>Nycterosea obstipata</i> (Fabricius, 1794)	C, P	
143	4144		<i>Xanthorhoe fluctuata</i> (Linnaeus, 1758)	P	
144	4155		<i>Epirrhoe alternata</i> (Muller, 1764)	C	
145	4158		<i>Epirrhoe galiata</i> (Denis & Schiffermüller, 1775)	P	
146	4160		<i>Costaconvexa polygrammata</i> (Borkhausen, 1794)	C	NT
147	4162		<i>Camptogramma bilineata</i> (Linnaeus, 1758)	C, P	
148	4172		<i>Earophila badiata</i> (Denis & Schiffermüller, 1775)	C	NT
149	4177		<i>Pelurga comitata</i> (Linnaeus, 1758)	P	NT
150	4182		<i>Cosmorhoe ocellata</i> (Linnaeus, 1758)	C, P	
151	4235		<i>Horisme corticata</i> (Treitschke, 1835)	P	NT
152	4265		<i>Epirrita dilutata</i> (Denis & Schiffermüller, 1775)	C, P	
153	4298		<i>Eupithecia linariata</i> (Denis & Schiffermüller, 1775)	C, P	
154	4317		<i>Eupithecia centaureata</i> (Denis & Schiffermüller, 1775)	C, P	
155	4346		<i>Eupithecia simpliciata</i> (Haworth, 1809)	C, P	
156	4372		<i>Chloroclystis v-ata</i> (Haworth, 1809)	C	
157	4387		<i>Aplocera efformata</i> (Guenée, 1858)	C, P	
158	4398		<i>Lithostege farinata</i> (Hufnagel, 1767)	C	
159	4437	Notodontidae	<i>Clostera curtula</i> (Linnaeus, 1758)	C, P	
160	4438		<i>Clostera pigra</i> (Hufnagel, 1766)	C, P	
161	4440		<i>Clostera anastomosis</i> (Linnaeus, 1758)	C, P	
162	4446		<i>Furcula furcula</i> (Clerck, 1759)	C, P	
163	4448		<i>Furcula bifida</i> (Brahm, 1787)	P	
164	4450		<i>Dicranura ulmi</i> (Denis & Schiffermüller, 1775)	P	NT
165	4457		<i>Drymonia dodonaea</i> (Denis & Schiffermüller, 1775)	C, P	
166	4458		<i>Drymonia melagona</i> (Borkhausen, 1790)	C	
167	4460		<i>Drymonia querna</i> (Denis & Schiffermüller, 1775)	C, P	
168	4461		<i>Drymonia velitaris</i> (Hufnagel, 1766)	C, P	NT
169	4463		<i>Pheosia tremula</i> (Clerck, 1759)	C	
170	4464		<i>Pheosia gnoma</i> (Fabricius, 1776)	C, P	*, NT
171	4468		<i>Pterostoma palpina</i> (Clerck, 1759)	C, P	
172	4470		<i>Ptilophora plumigera</i> (Denis & Schiffermüller, 1775)	C, P	
173	4479		<i>Gluphisia crenata</i> (Esper, 1785)	C	
174	4482		<i>Phalera bucephala</i> (Linnaeus, 1758)	C, P	
175	4491		<i>Harpyia milhauseri</i> (Fabricius, 1775)	O	NT
176	4499	Noctuidae	<i>Moma alpium</i> (Osbeck, 1778)	C, P	
177	4503		<i>Acrionicta tridens</i> (Denis & Schiffermüller, 1775)	C, P	
178	4514		<i>Acrionicta rumicis</i> (Linnaeus, 1758)	C, P	
179	4516		<i>Craniophora ligustri</i> (Denis & Schiffermüller, 1775)	C, P	

	RO No	Family	Species name		Obs., RL
180	4610		<i>Aedia funesta</i> (Esper, 1786)	C, P	NT
181	4611		<i>Aedia leucomelas</i> (Linnaeus, 1758)	C, P	*, VU
182	4613		<i>Tyta luctuosa</i> (Denis & Schiffermüller, 1775)	C, P	
183	4661		<i>Diachrysia chrysitis</i> (Linnaeus, 1758)	C, P	
184	4662		<i>Diachrysia stenochrysis</i> (Warren, 1913)	C, P	
185	4667		<i>Macdunnoughqia confusa</i> (Stephens, 1850)	C, P	
186	4669		<i>Plusia festucae</i> (Linnaeus, 1758)	C, P	
187	4672		<i>Autographa gamma</i> (Linnaeus, 1758)	C, P	
188	4688		<i>Chrysodeixis chalcites</i> (Esper, 1789)	C, P	**, DD
189	4691		<i>Abrostola asclepiadis</i> (Denis & Schiffermüller, 1775)	C, P	
190	4692		<i>Abrostola triplasia</i> (Linnaeus, 1758)	C	
191	4696		<i>Acontia trabealis</i> (Scopoli, 1763)	C, P	
192	4698		<i>Acontia lucida</i> (Hufnagel, 1766)	C, P	
193			<i>Acontia candefacta</i> (Hübner, 1831)	C	*
194	4704		<i>Phyllophila obliterata</i> (Rambur, 1833)	C, P	NT
195	4741		<i>Cucullia xeranthemi</i> Boisduval, 1840	C, P	**, VU
196	4745		<i>Cucullia umbratica</i> (Linnaeus, 1758)	C, P	
197	4749		<i>Cucullia chamomillae</i> (Denis & Schiffermüller, 1775)	C, P	NT
198	4751		<i>Cucullia gnaphalii</i> (Hübner, 1813)	C, P	**, VU
199	4752		<i>Cucullia tanacetii</i> (Denis & Schiffermüller, 1775)	C	NT
200	4753		<i>Cucullia dracunculi</i> (Hübner, 1813)	C	**, VU
201	4761		<i>Cucullia verbasci</i> (Linnaeus, 1758)	C, P	*
202	4767		<i>Calophasia lunula</i> (Hufnagel, 1766)	C, P	
203	4771		<i>Omphalophana antirrhinii</i> (Hübner, 1803)	C, P	*
204	4793		<i>Valeria oleagina</i> (Denis & Schiffermüller, 1775)	C, P	
205	4798		<i>Allophyes oxyacanthae</i> (Linnaeus, 1758)	C, P	
206	4803		<i>Amphipyra pyramidea</i> (Linnaeus, 1758)	C	
207	4807		<i>Amphipyra tragopoginis</i> (Clerck, 1759)	C, P	
208	4808		<i>Amphipyra tetra</i> (Fabricius, 1787)	C, P	*, EN
209	4813		<i>Diloba caeruleocephala</i> (Linnaeus, 1758)	C, P	
210	4816		<i>Panemeria tenebrata</i> (Scopoli, 1763)	P	
211	4821		<i>Mycteroplus puniceago</i> (Boisduval, 1840)	C, P	*, VU
212	4826		<i>Protoschinia scutosa</i> (Denis & Schiffermüller, 1775)	C, P	
213	4830		<i>Heliothis virespallata</i> (Hufnagel, 1766)	C, P	
214	4836		<i>Helicoverpa armigera</i> (Hübner, 1808)	C, P	
215	4850		<i>Elaphria venustula</i> (Hübner, 1790)	C, P	
216	4856		<i>Caradrina morpheus</i> (Hufnagel, 1766)	C	
217	4870		<i>Hoplodrina octogenaria</i> (Goeze, 1781)	C	
218	4874		<i>Hoplodrina ambigua</i> (Denis & Schiffermüller, 1775)	C, P	
219	4880		<i>Spodoptera exigua</i> (Hübner, 1808)	C, P	*
220	4884		<i>Athetis gluteosa</i> (Treitschke, 1835)	C, P	*, NT
221	4890		<i>Dypterygia scabriuscula</i> (Linnaeus, 1758)	C	
222	4898		<i>Polyphaenis sericata</i> Esper, 1787	C	*, CR
223	4901		<i>Thalpophila matura</i> (Hufnagel, 1766)	C, P	
224	4909		<i>Phlogophora meticulosa</i> (Linnaeus, 1758)	C, P	
225	4916		<i>Actinotia polyodon</i> (Clerck, 1759)	C, P	

	RO No	Family	Species name		Obs., RL
226	4919		<i>Chloantha hyperici</i> (Denis & Schiffermüller, 1775)	C, P	*
227	4926		<i>Eucarta virgo</i> (Treitschke, 1835)	C, P	VU
228	4937		<i>Mesogona acetosellae</i> (Denis & Schiffermüller, 1775)	C, P	*
229	4942		<i>Cosmia diffinis</i> (Linnaeus, 1767)	C, P	NT
230	4944		<i>Cosmia affinis</i> (Linnaeus, 1767)	C, P	*, NT
231	4945		<i>Cosmia pyralina</i> (Denis & Schiffermüller, 1775)	C	
232	4948		<i>Apamea monoglypha</i> (Hufnagel, 1766)	C, P	
233	4972		<i>Oligia strigilis</i> (Linnaeus, 1758)	C	
234	4973		<i>Oligia versicolor</i> (Borkhausen, 1792)	P	
235	4988		<i>Luperina testacea</i> (Denis & Schiffermüller, 1775)	C, P	
236	4994		<i>Rhizedra lutosa</i> (Hübner, 1803)	C, P	NT
237	5008		<i>Gortyna flavago</i> (Denis & Schiffermüller, 1775)	C, P	NT
238	5013		<i>Calamia tridens</i> (Hufnagel, 1766)	C, P	*
239	5019		<i>Nonagria typhae</i> (Thunberg, 1784)	C, P	NT
240	5043		<i>Anarta trifolii</i> (Hufnagel, 1766)	C, P	
241	5044		<i>Anarta stigmata</i> (Christoph, 1887)	P	*, EN
242	5060		<i>Lacanobia thalassina</i> (Hufnagel, 1766)	C	
243	5062		<i>Lacanobia suasa</i> (Denis & Schiffermüller, 1775)	C, P	
244	5064		<i>Lacanobia oleracea</i> (Linnaeus, 1758)	C, P	
245	5076		<i>Hada plebeja</i> (Linnaeus, 1761)	C	
246	5080		<i>Mamestra brassicae</i> (Linnaeus, 1758)	P	
247	5086		<i>Sideridis rivularis</i> (Fabricius, 1775)	C, P	NT
248	5102		<i>Hecatera bicolorata</i> (Hufnagel, 1766)	C	
249	5103		<i>Hecatera dysodea</i> (Denis & Schiffermüller, 1775)	C, P	
250	5127		<i>Tholera cespitis</i> (Denis & Schiffermüller, 1775)	C, P	
251	5128		<i>Tholera decimalis</i> (Poda, 1761)	C, P	
252	5131		<i>Mythimna turca</i> (Linnaeus, 1761)	C, P	
253	5132		<i>Mythimna pudorina</i> (Denis & Schiffermüller, 1775)	C, P	VU
254	5134		<i>Mythimna pallens</i> (Linnaeus, 1758)	C, P	
255	5137		<i>Mythimna vitellina</i> (Hübner, 1808)	C, P	
256	5145		<i>Mythimna ferrago</i> (Fabricius, 1787)	C, P	
257	5146		<i>Mythimna congrua</i> (Hübner, 1817)	C	**, VU
258	5147		<i>Mythimna l-album</i> (Linnaeus, 1767)	C, P	
259	5151		<i>Leucania obsoleta</i> (Hübner, 1803)	C, P	
260	5164		<i>Orthosia incerta</i> (Hufnagel, 1766)	C, P	
261	5167		<i>Orthosia cerasi</i> (Fabricius, 1775)	C, P	
262	5168		<i>Orthosia cruda</i> (Denis & Schiffermüller, 1775)	C, P	
263	5174		<i>Orthosia gothica</i> (Linnaeus, 1758)	C, P	
264	5176		<i>Anorthoa munda</i> (Denis & Schiffermüller, 1775)	C, P	
265	5181		<i>Egira conspiciellaris</i> (Linnaeus, 1758)	C, P	
266	5185		<i>Atethmia centrago</i> (Haworth, 1809)	C, P	NT
267	5187		<i>Tiliacea citrigo</i> (Linnaeus, 1758)	C, P	
268	5189		<i>Tiliacea sulphurago</i> (Denis & Schiffermüller, 1775)	C, P	
269	5194		<i>Xanthia icteritia</i> (Hufnagel, 1766)	C, P	
270	5195		<i>Xanthia gilvago</i> (Denis & Schiffermüller, 1775)	P	NT
271	5196		<i>Xanthia ocellaris</i> (Borkhausen, 1792)	C, P	NT

	RO No	Family	Species name		Obs., RL
272	5202		<i>Agrochola humilis</i> (Denis & Schiffermüller, 1775)	C, P	*
273	5203		<i>Agrochola litura</i> (Linnaeus, 1758)	C, P	
274	2504		<i>Agrochola helvola</i> (Linnaeus, 1758)	C, P	
275	5206		<i>Agrochola lota</i> (Clerck, 1759)	C, P	
276	5209		<i>Agrochola circellaris</i> (Hufnagel, 1766)	C, P	
277	5218		<i>Conistra rubiginosa</i> (Scopoli, 1763)	C, P	
278	5233		<i>Lithophane ornitopus</i> (Hufnagel, 1766)	C, P	
279	5241		<i>Xylena exsoleta</i> (Linnaeus, 1758)	P	NT
280	5247		<i>Eupsilia transversa</i> (Hufnagel, 1766)	C, P	
281	5255		<i>Dichonia convergens</i> (Denis & Schiffermüller, 1775)	C, P	NT
282	5257		<i>Griposia aprilina</i> (Linnaeus, 1758)	C, P	*
283	5267		<i>Ammoconia caecimacula</i> (Denis & Schiffermüller, 1775)	C, P	
284	5291		<i>Episema tersa</i> (Denis & Schiffermüller, 1775)	C, P	*, VU
285	5295		<i>Cleoceris scoriacea</i> (Esper, 1789)	C, P	*, EN
286	5297		<i>Ulochlaena hirta</i> (Hübner, 1813)	C, P	*, VU
287	5300		<i>Axylia putris</i> (Linnaeus, 1761)	C, P	
288	5302		<i>Dichagyris flammata</i> (Denis & Schiffermüller, 1775)	C	
289	5304		<i>Ochropleura plecta</i> (Linnaeus, 1761)	C, P	
290	5313		<i>Noctua pronuba</i> (Linnaeus, 1758)	C, P	
291	5316		<i>Noctua comes</i> Hübner, 1813	C	
292	5317		<i>Noctua fimbriata</i> (Schreber, 1759)	C, P	
293	5352		<i>Opigena polygona</i> (Denis & Schiffermüller, 1775)	C, P	NT
294	5361		<i>Xestia c-nigrum</i> (Linnaeus, 1758)	C, P	
295	5371		<i>Xestia xanthographa</i> (Denis & Schiffermüller, 1775)	C, P	
296	5376		<i>Cerastis rubricosa</i> (Denis & Schiffermüller, 1775)	C, P	
297	5399		<i>Euxoa temera</i> (Hübner, 1808)	C, P	*
298	5407		<i>Euxoa conspicua</i> (Hübner, 1824)	P	*, NT
299	5420		<i>Agrotis bigramma</i> (Esper, 1790) = <i>crassa</i> (Hübner, 1803)	C, P	VU
300	5423		<i>Agrotis ipsilon</i> (Hufnagel, 1766)	C, P	
301	5425		<i>Agrotis exclamationis</i> (Linnaeus, 1758)	C, P	
302	5427		<i>Agrotis segetum</i> (Denis & Schiffermüller, 1775)	C, P	
303	5437		<i>Colocasia coryli</i> (Linnaeus, 1758)	C, P	
304	5475	Nolidae	<i>Meganola albula</i> (Denis & Schiffermüller, 1775)	C, P	NT
305	5480		<i>Nola aerugula</i> (Hübner, 1793)	C, P	NT
306	5481		<i>Nola cristatula</i> (Hübner, 1793)	C	*, NT
307	5488		<i>Nycteola asiatica</i> (Krulikovskiy, 1904)	C, P	
308	5491		<i>Bena bicolorana</i> (Fuessly, 1775)	C	
309	5493		<i>Pseudoips prasinana</i> (Linnaeus, 1758)	C, P	
310	5496		<i>Earias clorana</i> (Linnaeus, 1761)	C, P	
311	4544	Erebidae	<i>Paracolax tristalis</i> (Fabricius, 1794)	C, P	
312	4548		<i>Herminia tarsicrinalis</i> (Knoch, 1782)	C	NT
313	4560		<i>Herminia tarsipennalis</i> (Treitschke, 1835)	C	
314	4573		<i>Catocala nupta</i> (Linnaeus, 1767)	P	NT
315	4577		<i>Catocala electa</i> (Vieweg, 1790)	C	VU
316	4591		<i>Dysgonia algira</i> (Linnaeus, 1767)	C, P	*, NT
317	4593		<i>Grammodes stolidia</i> (Fabricius, 1775)	C, P	*

	RO No	Family	Species name		Obs., RL
318	4602		<i>Lygephila cracca</i> (Denis & Schiffermüller, 1775)	C, P	
319	4617		<i>Euclidia glyphica</i> (Linnaeus, 1758)	C	
320	4628		<i>Calyptra thalictri</i> (Borkhausen, 1790)	C, P	*, VU
321	4640		<i>Rivula sericealis</i> (Scopoli, 1763)	P	
322	4718		<i>Calymma communimacula</i> (Denis & Schiffermüller, 1775)	C, P	NT
323	4725		<i>Eublemma amoena</i> (Hübner, 1803)	C, P	*, VU
324	4726		<i>Eublemma purpurina</i> (Denis & Schiffermüller, 1775)	C, P	
325	5441		<i>Lymantria dispar</i> (Linnaeus, 1758)	C	
326	5456		<i>Orgyia antiqua</i> (Linnaeus, 1758)	C, P	
327	5459		<i>Euproctis chrysorrhoea</i> (Linnaeus, 1758)	C, P	
328	5468		<i>Arctornis l-nigrum</i> (Muller, 1764)	C, P	NT
329	5505		<i>Miltochrista miniata</i> (Forster, 1771)	P	
330	5510		<i>Pelosia obtusa</i> (Herrich-Schäffer, 1852)	C, P	NT
331	5518		<i>Eilema lurideola</i> (Zincken, 1817)	C	
332	5519		<i>Eilema complana</i> (Linnaeus, 1758)	C	
333	5534		<i>Dysauxes ancilla</i> (Linnaeus, 1767)	C, P	
334	5547		<i>Chelis maculosa</i> (Gerning, 1780)	C, P	*, VU
335	5551		<i>Phragmatobia fuliginosa</i> (Linnaeus, 1758)	C, P	
336	5559		<i>Spilosoma lubricipeda</i> (Linnaeus, 1758)	C, P	
337	5562		<i>Hyphantria cunea</i> (Drury, 1773)	C, P	
338	5564		<i>Diaphora mendica</i> (Clerck, 1759)	C, P	
339	5572		<i>Diacrisia sannio</i> (Linnaeus, 1758)	C, P	
340	5574		<i>Hyphoraia aulica</i> (Linnaeus, 1758)	C	*, EN
341	5579		<i>Arctia villica</i> (Linnaeus, 1758)	P	
342	5584		<i>Euplagia quadripunctaria</i> (Poda, 1761)	O	!

From the Stâncea area 6 species are new for Moldova region: *Ancylolomia tentaculella* (Hübner, 1796), *Chrysodeixis chalcites* (Esper, 1789), *Cucullia xeranthemi* Boisduval, 1840, *Cucullia gnaphalii* (Hübner, 1813), *Cucullia dracunculi* (Hübner, 1813) and *Mythimna congrua* (Hübner, 1817).

Also other 53 species are rare species for the region known only from old data, this being marked with * in the table.

In Stâncea area were found 4 species of Lepidoptera which are of conservative interest, Natura 2000 species: *Proserpinus proserpina* (Pallas, 1772), *Hyles hippophaes* (Esper, 1789), *Zerynthia polyxena* (Denis & Schiffermüller, 1775) and *Euplagia quadripunctaria* (Poda, 1761).

Below we will briefly discuss some taxons that we consider to be of special interest for the region.

***Ancylolomia tentaculella* (Hübner, 1796)** (Crambidae) (fig.1)

This species is new for the region. Many specimens were observed in July and August 2014, 6 specimens being collected. In Romania the species is known with new data only from NW part, Maramures and Satu Mare regions (and old data from Banat, Oltenia and Dobrodja) (Rakosy & all, 2003; Slamka, 2008).

***Chrysodeixis chalcites* (Esper, 1789)** (Noctuidae) (fig.2)

Another new species for the region, this is a subtropical migratory species widely distributed across Eurasia, Africa, Oceania and Australia, and is a resident species only in southern Europe. One fresh male specimen was photographed and collected in 15.X.2014 (leg. & coll. Mancu C.).

The species was known only from Dobrodja (Rakosy & Neumann, 1990; Székely & all, 2011) and Muntenia (Székely

& Stanciu, 2002; Dincă, 2006) but is likely to be or become more spreaded, as it can become a pest of several cultivated plants (tomato, tobacco, pepper and other).

***Cucullia xeranthemi* Boisduval, 1840** (Noctuidae) (fig.3)

This new species for the region is associated with places where *Aster linosyris* grow in steppe. Recent data are from Transylvania, Dobrodja and historical from Banat and Crisana (Rakosy, 1996; Rakosy & all, 2003). Between August and September 3 specimens arrived at light, one male was photographed and after that collected in 5.IX.2014 (leg. & coll. Mancu C.).

It is listed as a vulnerable species in the Romanian fauna (Rakosy & all, 2003).

***Cucullia gnaphalii* (Hübner, 1813)** (Noctuidae) (fig.4)

New for the region, it is a rare species in Romania, known in the recent years only from Transylvania and with historical data also from Banat (Rakosy & all, 2003). One specimen was photographed and collected in 1.VI.2014 (leg. & coll. Mancu C.).

It is listed as a vulnerable species in the Romanian fauna (Rakosy & all, 2003).

***Cucullia dracunculi* (Hübner, 1813)** (Noctuidae)

Another *Cucullia* species that is new for the region, known before from Banat (Neumann, 1997) and Dobrodja (Kovács & Kovács, 1997) (Rakosy & all, 2003).

A rare species in Romania known only from 4 specimens (3 from Banat and 1 from Dobrodja) this one being the fifth specimen known, collected in 26-31.VIII.2014 (leg. Mancu C., coll. Sitar C.).

It is listed as a vulnerable species in the Romanian fauna (Rakosy & all, 2003).

***Mythimna congrua* (Hübner, 1817)** (Noctuidae)

New for the region, the species is known recently Dobrodja (Rakosy, 1996) and with historical records from Transylvania and Oltenia (Rakosy & all, 2003). In the locality 2 specimens were collected in 1-8.IX.2014 (leg. Mancu C., coll. Sitar C.).

It is listed as a vulnerable species in the Romanian fauna (Rakosy & all, 2003).

***Lemonia dumi* (Linnaeus, 1761)** (Brahmaeidae) (fig.5)

A species that is rarely signalled now probably because of less field work in the period when the species flying. The species appears to be relatively common in the area, in a day on transect up to 10 males can be seen flying, being observed in September 2013 and September 2014. Few specimens were collected in second half of September 2014 stored in Coll. Bere, Sitar & Mancu.

Only historical data are known from the region, it is listed as a endangered species in the Romanian fauna (Rakosy & all, 2003).

***Dolbina elegans* A. Bang-Haas, 1912** (Sphingidae) (fig.6)

Appears to be a rare species in Moldova region (as it is in general) that was firstly signalled from Ciric Forest, 1 male is collected in 19.VI.2007 (Corduneanu & all, 2011). Here 3 specimens were collected in the first part of august 2014 (stored in coll. Balan, Corduneanu and Haxaire).

These two localities are the most northern localities known for this species (Székely, 2011).

It is listed as a endangered species in the Romanian fauna (Rakosy & all, 2003).

***Proserpinus proserpina* (Pallas, 1772)** (Sphingidae) (fig.7)

A relatively common species (2-3 each night) in second half of May.

It is listed as a vulnerable species in the Romanian fauna (Rakosy & all, 2003) and a species of conservative interest being a Natura 2000 species.

***Hyles hippophaes* (Esper, 1789)** (Sphingidae) (fig.8)

Several specimens were observed in July 2014, one specimen being photographed and collected in 7.VII.2014 (leg. & coll. Mancu C.). The species was described from material collected in south Moldova (Focșani) (Székely & Szabó, 1995) and later being again found near Tecuci, 2 specimens in Alexinschi collection (Nemes & Voicu, 1973). Later was to be relatively common in Dobrodja and sporadically in Muntenia (Székely & Szabó, 1995; Székely & all, 2011). It is listed as a vulnerable species in the Romanian fauna (Rakosy & all, 2003) and a species of conservative interest being a Natura 2000 species.

***Zerynthia polyxena* (Denis & Schiffermüller, 1775)** (Papilionidae)

It is listed as an endangered species in the Romanian fauna (Rakosy & all, 2003) and a species of conservative interest being a Natura 2000 species. In the area it is a relatively common species, in day being able to see more than 20 specimens flying. Larvas were found in a lot of places host plant *Aristolochia clematitidis* being common here.

***Cilix asiatica* A. Bang-Haas, 1907** (Drepanidae) (fig.9)

Signaled from Romania from Dobrodja (Székely & all, 2008) the species was already mentioned for the first time from Moldova region (Corduneanu & all, 2013, 2015) this being the second record of the species. The species here appear to be very common from May to September in 2(3) generation, being normal to have at least 10 specimens at light in a night (several hundreds of specimens being seen in 2014 and few tens being collected). We don't have enough data to know if it is about a recent strong dispersion of this species in Romanian fauna or if it was just overlooked.

***Acontia candefacta* (Hübner, 1831)** (Noctuidae) (fig.10)

One specimen was collected in 1-8.IX.2014 (leg. Mancu C., coll. Sitar C.). The species was already known from Moldova in 2013 when first specimens are found (Corduneanu & all, 2013, 2015).

This is a species of Nearctic origin being widely distributed in North America and has been intentionally introduced in southern Russia (the Krasnodar region) in the years 60 of the 20th century as a biological control measure against the *Ambrosia artemisiifolia*, an invasive plant, that is becoming more and more common and with pollen that is highly allergic (Székely & all, 2011). We expect that the species will become more and more common.

This species was firstly found in Dobrodja (Székely & all, 2011) and Dobrodja and Muntenia (Székely, 2011; Rakosy & Mihai, 2011).

***Amphipyra tetra* (Fabricius, 1787)** (Noctuidae) (fig.11)

A new species for the region, one specimen was photographed in 26.VIII.2014. Appears to be a very rare species in Romania, known with new data only from Dobrodja and

it is listed as an endangered species in the Romanian fauna (Rakosy & all, 2003).

***Mycteroplus puniceago* (Boisduval, 1840)** (Noctuidae) (fig.12)

A rare species in Moldova and second record for the north part of Moldova (Corduneanu & all, 2011, 2015). First specimen and only one before this record date from 2010. A number of 5 specimens were collected at the end of summer - autumn (August, September), 2015.

It is listed as a vulnerable species in the Romanian fauna with recent data, except the one from Moldova, only from Dobrodja (Rakosy & all, 2003).

***Polyphaenis sericata* Esper, 1787** (Noctuidae)

The species was known until recently (Corduneanu & all, 2015) only from old data in the region. Here two specimens were collected in 9.July.2014 and 26-31.August.2014 (leg. Mancu C., coll. Sitar C.).

It is listed as a critical endangered species in the Romanian fauna (Rakosy & all, 2003).

***Cleoceris scoriacea* (Esper, 1789)** (Noctuidae) (fig.13)

Known before with recent data only from Banat (Băile Herculane) and historical data from Crisana, Transylvania and South of Moldova (Gârboavele Forest) (Rakosy, 1996; Rakosy & all, 2003) it was found recently to be common in Dobrodja (Székely & all, 2011). Here the species looked to be a common one in september with nights having more than 10 specimens at light.

It is listed as an endangered species in the Romanian fauna (Rakosy & all, 2003).

***Calyptra thalictri* (Borkhausen, 1790)** (Erebidae) (fig.14)

Until few years ago it was a species known from the region only with historical data, in the last years a massive influx of this species reached the north part of Moldova region, a maximum recorded was over 50 specimens at light in June 2012 (Corduneanu & all, 2011, 2015).

Here the species appeared only in isolated specimens, 3 specimens being collected in July 2014.

It is listed as a vulnerable species in the Romanian fauna (Rakosy & all, 2003).



Fig. 1. *Ancylolomia tentaculella* (Hübner, 1796)



Fig. 5. *Lemonia dumi* (Linnaeus, 1761)



Fig. 2. *Chrysodeixis chalcites* (Esper, 1789)

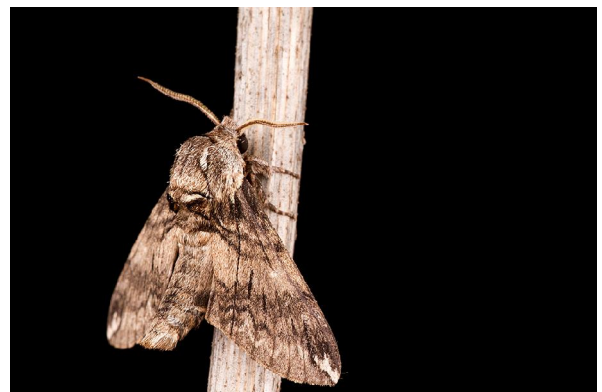


Fig. 6. *Dolbina elegans* A. Bang-Haas, 1912



Fig. 3. *Cucullia xeranthemi* Boisduval, 1840

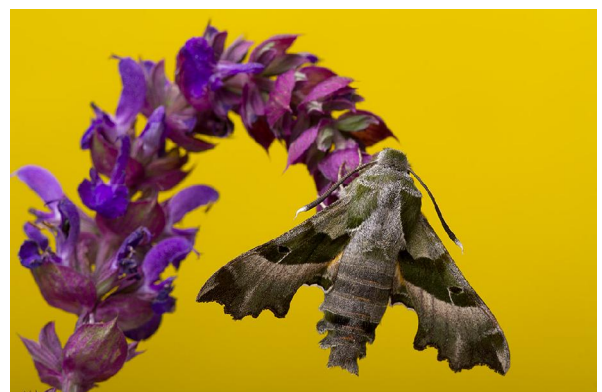


Fig. 7. *Proserpinus proserpina* (Pallas, 1772)



Fig. 4. *Cucullia gnaphalii* (Hübner, 1813)

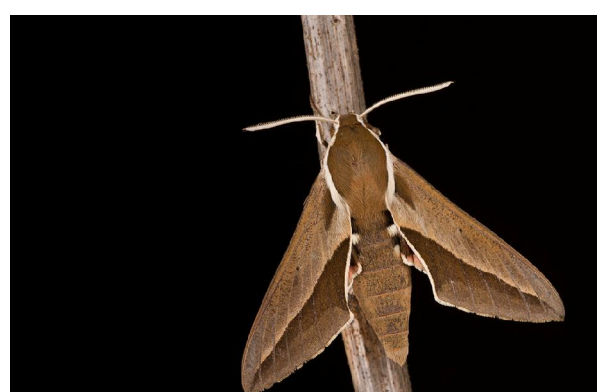


Fig. 8. *Hyles hippophaes* (Esper, 1789)



Fig. 9. *Cilix asiatica* A. Bang-Haas, 1907



Fig. 13. *Cleoceris scoriacea* (Esper, 1789)



Fig. 10. *Acontia candefacta* (Hübner, 1831)



Fig. 14. *Calyptra thalictri* (Borkhausen, 1790)



Fig. 11. *Amphipyra tetra* (Fabricius, 1787)



Fig. 15. *Eublemma amoena* (Hübner, 1803)



Fig. 12. *Mycteroplus puniceago* (Boisduval, 1840)



Fig. 16. *Chelis maculosa* (Gerning, 1780)

***Eublemma amoena* (Hübner, 1803)**
(Erebidae) (fig.15)

A rare species in the region, one specimen was photographed and collected in 10.august.2014 (leg. & coll. Mancu C.).

It is listed as a vulnerable species in the Romanian fauna (Rakosy & all, 2003).

***Chelis maculosa* (Gerning, 1780)**
(Erebidae) (fig.16)

A rare species in the region (Corduneanu & all, 2013, 2015), here appears to be a common species, in 2 generation, maybe the species is a rare one found because it is coming at light only very late at night. Nights with up to ten specimens are not rare in May-June and August.

It is listed as a vulnerable species in the Romanian fauna (Rakosy & all, 2003).

***Hyphoraia aulica* (Linnaeus, 1758)**
(Erebidae)

A species signalled sporadically from all the regions (Corduneanu & all, 2011) but rare in the region, one male was collected in May 2014.

It is listed as an endangered species in the Romanian fauna (Rakosy & all, 2003).

***Euplagia quadripunctaria* (Poda, 1761)** (Erebidae)

It is a common species almost everywhere in Romania, but it is a species of conservative interest being a Natura 2000 species.

Conclusions

From the 341 species recorded in the first year (October 2013 to October 2014) of survey some species are of more interest: 6 are new for the whole region, 50 are rare or known only from older data (one being known in the region only before 1900) and 4 are important from conservative point of view, being Natura 2000 species.

We are sure that a continuously monitoring of Stâncă area will reveal a bigger number of species.

Acknowledgements

The authors want to express their thanks to Carol Bere, from Cluj-Napoca, who helped doing and checking some identification, Szekely Levente for his help with literature and discussions and to Laszlo

Rakosy for critical discussion and help with some identification.

References

- CLARKE, J.F.G., 1941. The preparation of slides of the genitalia of Lepidoptera. Bull. of the Brooklyn Entomol. Society, 36: 149-161.
- CORDUNEANU, C., 2011. Protected lepidopteran species (Insecta: Lepidoptera) in North-East of Romania. Travaux du Muséum National d'Histoire Naturelle «Grigore Antipa», 54(1): 115-123.
- CORDUNEANU, C., 2014. Lepidopterele (Insecta: Lepidoptera) din localitatea Schit Orășeni, jud. Botoșani. Mnemosyne, 5: 49-66.
- CORDUNEANU, C., BALAN, C.-D. & SURUGIU, I., 2007. Lepidoptera of Humid Area „Orășeni Vale” (Orășeni Vale, Botoșani County, Romania). Entomol. Rom., 12: 113-120.
- CORDUNEANU, C., BALAN, C.-D. & SURUGIU, I., 2011. Observații diurne asupra faunei de lepidoptere (Insecta: Lepidoptera) din Rezervația Naturală „Valea lui David”, județul Iași. Mnemosyne, 2: 51-57.
- CORDUNEANU, C., BALAN, C.-D., SURUGIU, I. & MANCI, C.-O., 2015. Noi date despre răspândirea unor specii de lepidoptere în nordul Moldovei, România. Mnemosyne, 6: 49-62.
- CORDUNEANU, C., BALAN, C.-D., POPOVICI, O.-A., BULAI, P. & SURUGIU I., 2011. New records of Noctuidae (Insecta: Lepidoptera) from North-East Romania (poster presentation) in: MURARIU, D. & all (eds) 2011. Annual Zoological Congress of “Grigore Antipa” Museum - Book of abstracts. “Grigore Antipa” National Museum of Natural History, Bucharest, 148.
- CORDUNEANU, C., BALAN, C.-D., POPOVICI, O.-A. & MOGLAN, I., 2012. Preliminary faunistic considerations regarding Lepidoptera (Insecta: Lepidoptera) from protected area: “Sărăturile din Valea Ilenei” (Iași,

- Romania) (poster presentation) in: MURARIU, D. & all (eds) 2012. Annual Zoological Congress of "Grigore Antipa" Museum - Book of abstracts. "Grigore Antipa" National Museum of Natural History, Bucharest, 207.
- CORDUNEANU, C., BALAN, C.-D., POPOVICI, O.-A. & SURUGIU, I., 2013. New records or rare species of Lepidoptera (Insecta: Lepidoptera) from the North-East part of Romania (poster presentation) in: MURARIU, D. & all (eds) 2013. Annual Zoological Congress of "Grigore Antipa" Museum - Book of abstracts. "Grigore Antipa" National Museum of Natural History, Bucharest, 147.
- CORDUNEANU, C., SURUGIU, I., BALAN, C., POPOVICI O. & CORDUNEANU, G., 2011. New data on the Lepidoptera in the North-East of Romania. *Bul.inf. Entomol.*, 22: 69-72.
- DINCĂ, V., 2006. The Macrolepidoptera (Insecta: Lepidoptera) from Istrița Hill (Buzău County, Romania). *Entomol. Rom.*, 10: 5-24.
- HAUSMANN, A., 2001. The Geometrid Moths of Europe, volume 1. Apollo Books, Stenstrup, 282 pp.
- HAUSMANN, A., 2004. The Geometrid Moths of Europe, volume 2. Apollo Books, Stenstrup, 600 pp.
- HAUSMANN, A. & VIIDALEPP, J., 2012. The Geometrid Moths of Europe, volume 3. Apollo Books, Stenstrup, 743 pp.
- JONG, Y. & ALL., 2014. Fauna Europaea - all European animal species on the web. *Biodiversity Data Journal* 2: e4034. doi: 10.3897/BDJ.2.e4034.
- KLJUTSHKO, Z., 2006. The Noctuids of Ukraina (in Russian: Ключко, Зоя Фёдоровна «Совки Украины» (монография, 2006), серия Природа України, издательство Раєвського, Киев) Kiev, 248 pp.
- KOCH, M., 1991. Schmetterlinge. Neumann Verlag Radebeul, Leipzig, 792 pp.
- KOVÁCS, S. & KOVÁCS, Z., 1997. *Cucullia dracunculi* (Hübner, 1813) (Lepidoptera: Noctuidae) specie nouă pentru fauna României. *Bul. inf. Soc.lepid. rom.* 8 (3-4): 163-164.
- MIRONOV, V., 2003. The Geometrid Moths of Europe, volume 3. Apollo Books, Stenstrup, 464 pp.
- NEMEȘ, I. & DĂNILĂ, I., 1970. Catalogul colecției de lepidoptere "Alexei Alexinschi" de la Muzeul Județean Suceava. Partea I-a. Fam. Micropterigidae - Fam. Zygaenidae. *Muz. Jud. Suceava. Stud. Com. Șt. Nat.*, 1: 131-256.
- NEMEȘ, I. & VOICU, M., 1971. Catalogul colecției de lepidoptere „Alexei Alexinschi” de la Muzeul județean Suceava. Partea a II-a. Superfam. Geometroidea. *Stud. Com. Muz. jud. Suceava.* 2 (2): 283-375.
- NEMEȘ, I. & VOICU, M., 1973. Catalogul colecției de lepidoptere „Alexei Alexinschi” de la Muzeul județean Suceava. Partea a III-a. Superfam.: Noctuoidea, Bombycoidea și Sphingoidea. *Stud. Com. Muz. jud. Suceava.* 4: 1-102.
- NEUMANN, H., 1997. *Saragossa porosa kenderesiensis* Kovács, 1968 und *Cucullia dracunculi* Hübner, 1813 in Rumänien (Lepidoptera: Noctuidae). *Entomol. Rom.* 2: 85-88.
- RAKOSY, L., 1996. Die Noctuiden Rumäniens (Lepidoptera Noctuidae). *Stapfia*, 46:1-648.
- RAKOSY, L., 2013. Fluturii diurni din România. Cunoaștere, protecție, conservare. Ed. Mega, Cluj-Napoca, 352 pp.
- RAKOSY, L. & GOIA, M., 2006. Addenda und Corrigenda zu dem Verzeichnis der Schmetterlinge Rumäniens / Addenda et corrigenda la Catalogul Lepidopterelor României. *Entomol. rom.*, 11: 69-79.
- RAKOSY, L., GOIA, M. & KOVACS, Z., 2003. Catalogul Lepidopterelor României / Verzeichnis der Schmetterlinge Rumäniens. Societatea

- Lepidopterologica Romana, Cluj-Napoca, 446 pp.
- RAKOSY, L. & MIHAI, C., 2011. *Grammodes bifasciata* (Petagna, 1787) și *Acontia (Emmelia) candefacta* (Hübner, [1831]) (Lepidoptera, Noctuidae), specii nou pătrunse în fauna României. *Bul.inf. Entomol.*, 22: 11-13.
- RAKOSY, L. & NEUMANN, H. 1990. *Cosmia confinis* (Herrich-Schäffer, 1849) și *Chrysodeixis chalcites* (Esper, 1789) în fauna României (Lepidoptera, Noctuidae). *Stud. cerc. biol. Biol. anim.*, București, 42(2): 75-78.
- ROBINSON, G.S., 1976. The preparation of slides of Lepidoptera genitalia with special reference to the microlepidoptera. *Entomologist's Gazette*. 27: 127-132.
- RONKAY, G. & RONKAY, L., 2009. *The Witt Catalogue. A Taxonomic Atlas of the Eurasian and North African Noctuoidea Vol 2. Cucullinae 1.* Budapest: Heterocera press. 365 pp.
- SLAMKA, F., 2006. *Pyraloidea of Europe, volume I.* Frantisek Slamka, Bratislava, 138 pp.
- SLAMKA, F., 2008. *Pyraloidea of Europe, volume II.* Frantisek Slamka, Bratislava, 223 pp.
- SLAMKA, F., 2010. *Pyraloidea of Central Europe.* Frantisek Slamka, Bratislava, 176 pp.
- SZÉKELY, L., 1992. Contribuții la cunoașterea faunei de macrolepidoptere din județul Botoșani (Moldova, România). *Bul. inf. Soc. lepid. rom.* 3(3): 7-17.
- SZÉKELY, L., 2011. The Lepidoptera of Bucharest and its surroundings (Romania). *Travaux du Muséum National d'Histoire Naturelle «Grigore Antipa»*, 54(2): 461-512.
- SZÉKELY, L. & DINCĂ, V., 2008. *Cilix asiatica* A. Bang-Haas, 1907 (Lepidoptera: Drepanidae) in the Romanian entomofauna. *Entomol.rom.*, 13: 5-8.
- SZÉKELY, L., DINCĂ, V. & JUHÁSZ, I., 2011. Macrolepidoptera from the steppes of Dobrogea (South-Eastern Romania). *Phegea*, 39(3): 85-106.
- SZÉKELY, L. & STANCIU, M.S., 2002. Contribuții la studiul faunei de lepidoptere din Câmpia Munteniei II. *Bul.inf. Soc. lepid. rom.*, 12(1-4): 259-269.
- SZÉKELY, L. & SZABÓ, G., 1995. *Hyles hippophaes* (Esper, 1793), o certitudine pentru fauna României. *Bul. inf. Soc. lepid. rom.*, 6(3-4): 189-190

Cosmin-Ovidiu **MANCI**
S.E.O.P.M.M. Oceanic-Club, Constanța
Iași, OP3, CP719, Romania
cosminom@gmail.com

Cristian **SITAR**
Muzeul Zoologic,
Universitatea Babeș Bolyai
Cluj-Napoca
cristiansitar@yahoo.com

Constantin **CORDUNEANU**
Liceul Dimitrie Negreanu Botoșani
corduneanuc@yahoo.com

Cătălin **BALAN**
Universitatea Tehnică „Gheorghe Asachi”,
Facultatea de Inginerie Chimică și Protecția
Mediului Iași
cbalan@ch.tuiasi.ro