

Second Supplement (Bryophytes) to "The List of Plants Collected from Papua New Guinea in 1979"

by

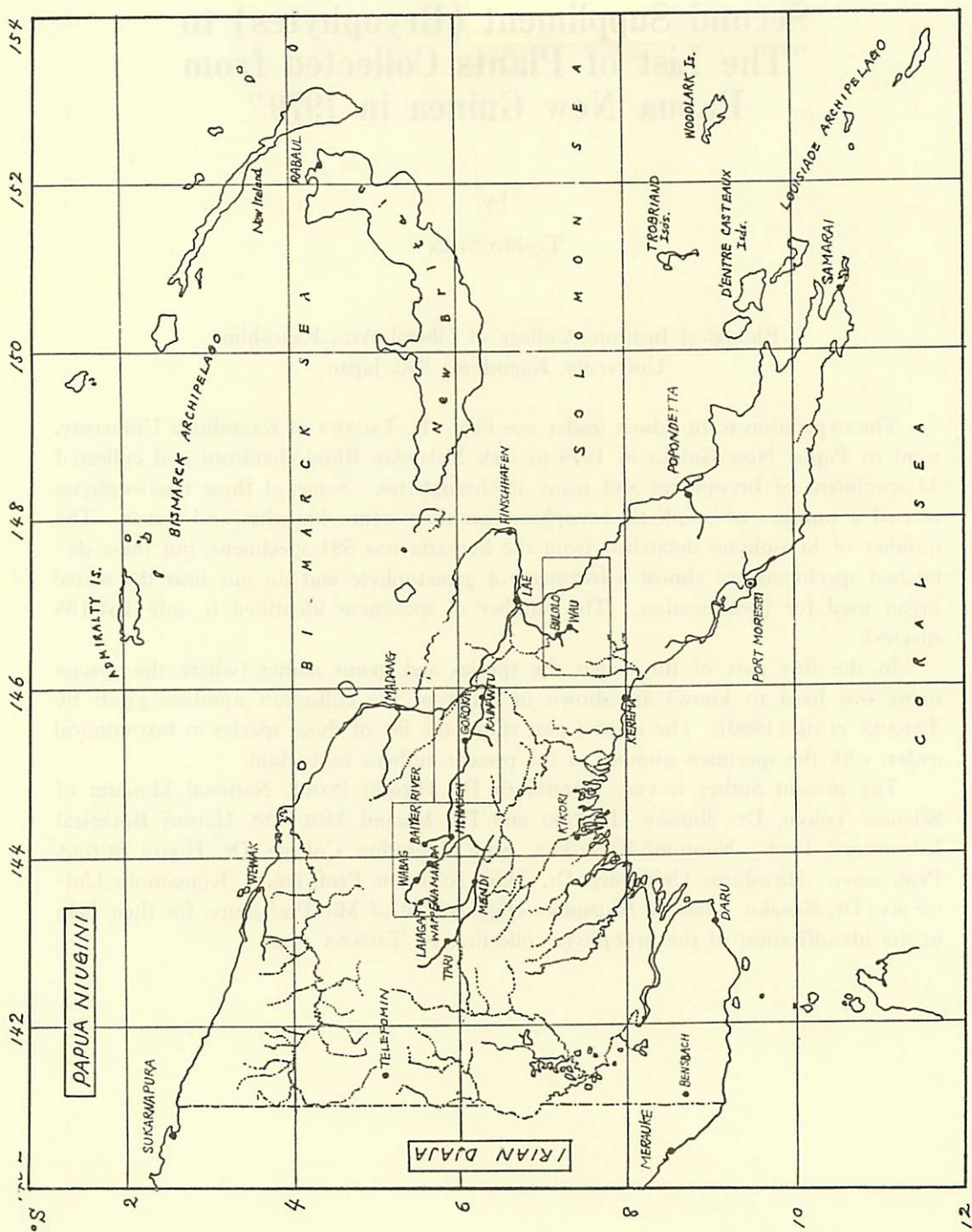
Toshio SHIN

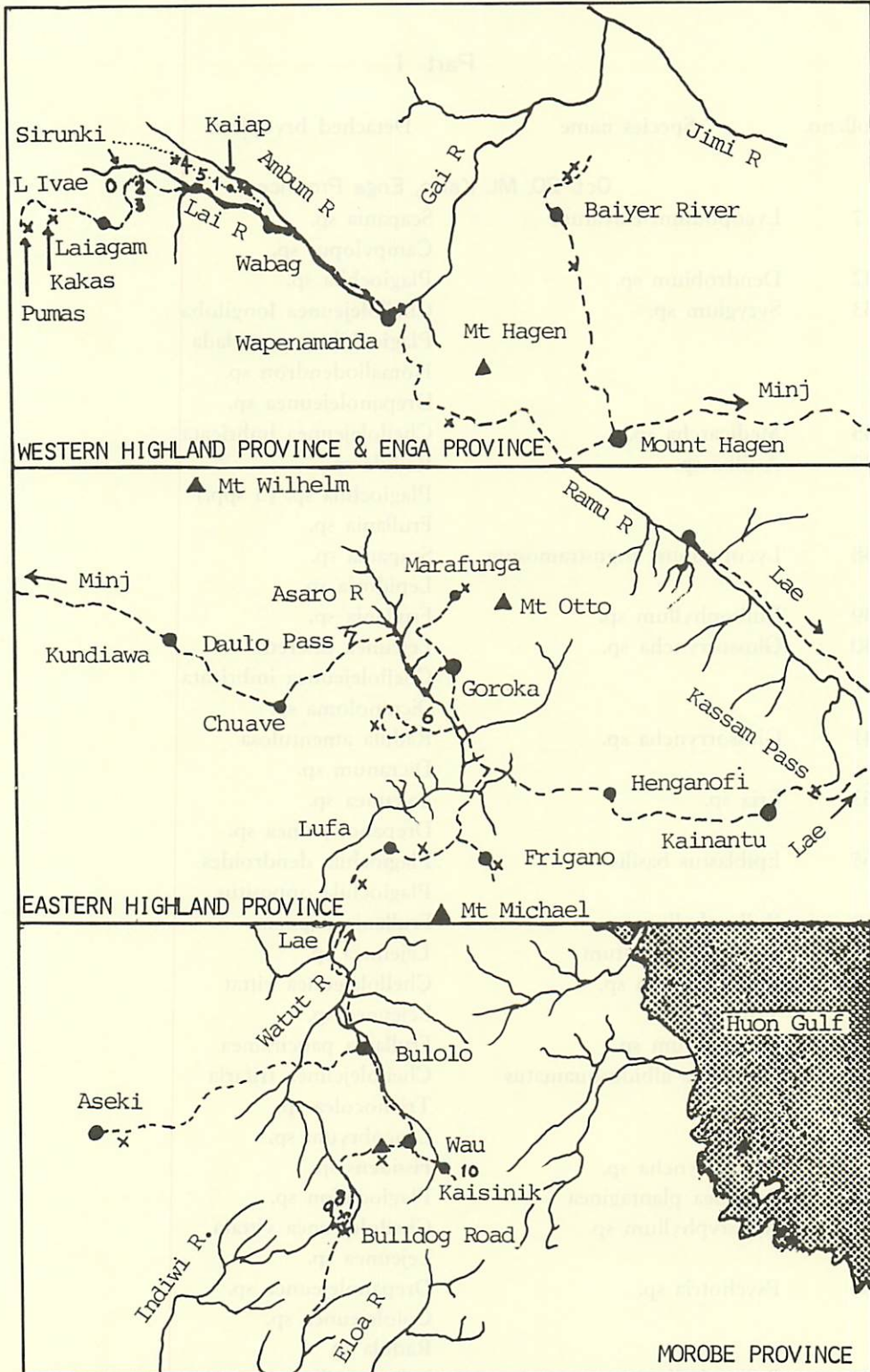
Biological Institute, College of Liberal Arts, Kagoshima
University, Kagoshima 890, Japan

The expedition team, whose leader was Prof. H. TAGAWA of Kagoshima University, went to Papua New Guinea in 1979 to seek Malaysian Rhododendrons and collected 52 specimens of bryophytes and many tracheophytes. Some of these tracheophytes carried a number of epiphytic bryophytes on their stems, branches and leaves. The number of bryophytes detached from the herbaria was 581 specimens, but these detached specimens are almost a fragment of gametophyte and do not bear the sexual organ used for identification. The number of specimens identified is only 164 (85 species).

In the first part of this paper the species and genus names (where the species name was hard to know) are shown in order of the collection numbers given by TAGAWA *et al.* (1980). The second part shows the list of those species in taxonomical order, with the specimen number of the present author's herbarium.

The present author is very grateful to Dr. Hiroshi INOUE, National Museum of Science, Tokyo, Dr. Shinske HATTORI and Dr. Masami MIZUTANI, Hattori Botanical Laboratory, Prof. Naofumi KITAGAWA, Nara Education College, Dr. Hiyozu SUZUKI, Prof. emer. Hiroshima University, Dr. Akira NOGUCHI, Prof. emer. Kumamoto University; Dr. Kosaku YAMADA, Matsusaka High School of Mie Prefecture, for their help in the identification of the bryophyte collection by TAGAWA *et al.*





Part I

Coll. no.	Species name	Detached bryophyta
Oct. 20, Mt. Kaiap, Enga Province		
7	<i>Lycopodium clavatum</i>	<i>Scapania</i> sp. <i>Campylopus</i> sp.
32	<i>Dendrobium</i> sp.	<i>Plagiochila</i> sp.
33	<i>Syzygium</i> sp.	<i>Cheilolejeunea longiloba</i> <i>Plagiochila gymnoclada</i> <i>Homaliodendron</i> sp. <i>Drepanolejeunea</i> sp.
35	<i>Medicarcha</i> sp.	<i>Cheilolejeunea imbricata</i>
37	<i>Astilba</i> sp.	<i>Radula</i> sp. <i>Plagiochila</i> sp. (3 spp.) <i>Frullania</i> sp.
38	<i>Lycopodium angustramosum</i>	<i>Scapania</i> sp. <i>Lepidozia</i> sp.
39	<i>Bulbophyllum</i> sp.	<i>Frullania</i> sp.
40	<i>Glossorrhyncha</i> sp.	<i>Lejeunea discreta</i> <i>Cheilolejeunea imbricata</i> <i>Dicranoloma</i> sp.
41	<i>Glossorrhyncha</i> sp.	<i>Radula amentulosa</i> <i>Dicranum</i> sp.
63	<i>Eria</i> sp.	<i>Lajeunea</i> sp. <i>Drepanolejeunea</i> sp.
65	<i>Epiblastus basilis</i>	<i>Plagiochila dendroides</i> <i>Plagiochila oppositus</i>
69	<i>Bulbophyllum</i> sp.	<i>Frullania papuana</i>
70	<i>Meringium ovatum</i>	<i>Lejeunea</i> sp.
74	<i>Bulbophyllum</i> sp.	<i>Cheilolejeunea vittata</i>
76	<i>Trimenia</i> sp.	<i>Lejeunea</i> sp.
77	<i>Dendrobium</i> sp.	<i>Frullania pauciramea</i>
78	<i>Crypsinus albidosquamatus</i>	<i>Cheilolejeunea trifaria</i> <i>Trichocolea</i> sp. <i>Leucobryum</i> sp.
81	<i>Glossorrhyncha</i> sp.	<i>Fissidens</i> sp.
82	<i>Selliguea plantaginea</i>	<i>Plagiochilon</i> sp.
83	<i>Agristiphyllum</i> sp.	<i>Cheilolejeunea vittata</i> <i>Lejeunea</i> sp.
84	<i>Psychotria</i> sp.	<i>Drepanolejeunea</i> sp. <i>Cololejeunea</i> sp. <i>Radula</i> sp.
85	<i>Bulbophyllum</i> sp.	<i>Lejeunea discreta</i> <i>Macromitrium</i> sp.

Coll. no.	Species name	Detached bryophyta
87	Phreatia sp.	Lepidozia sp. Lophocolea sp. Plagiochila sp.
88	Lindsaya adiantoides	Marchantia sp. Cheilolejeunea sp.
89	Vaccinium sp.	Lejeunea discreta
94		Frullania apiculata Plagiochilon oppositus Mastigophora sp.
Oct. 21, Mt. Kaiap., Enga Province		
99	Rhododendron conorii	Jackiella sp. Scapania sp.
117	Blechnum bamlerianum	Metzgeria sp.
119	Epiblastus sp.	Frullania pauciramea Thysanthus sp.
121	Phreatia sp.	Plagiochila gymnoclada Plagiochila spathulaefolia
123	Glossorhyncha sp	Jungermannia sp.
124	Malaxis sp.	Drepanolejeunea sp.
129	Scyphularia sinuosa	Cheilolejeunea excisula Drepanolejeunea sp.
130	Microsorium scolopendrina	Lejeunea cucullata
Oct. 22, Mt. Kaiap, Enga Province		
139	Bulbophyllum sp.	Frullania arminata Frullania sp.
146	Rhododendron rarum	Drepanolejeunea sp.
151	Carex sp.	Cheilolejeunea sp.
Oct. 24, Kompian, 2500 m alt, Enga Province		
168	Cyperus sp.	Frullania pauciramea Metzgeria sp.
169	Spathogrottis sp.	Frullania serrata var. hamatispina Plagiochila sp.
Oct. 25, Mt. Kaiap, 2700 m alt.		
177	Pilea sp.	Frullania nobilis
178	Cryptocarya sp.	Cheilolejeunea ceylanica Cheilolejeunea sp. Drepanolejeunea sp.
179		Drepanolejeunea sp.
183	Acronychia sp.	Cheilolejeunea vittata Frullania nobilis Frullania reflexistipula

Coll. no.	Species name	Detached bryophyta
		Lejeunea sp.
		Drepanolejeunea spp.
184	Streblus sp.	Cheilolejeunea imbricata
		Frullania sp.
		Schiffneriolejeunea sp.
		Drepanolejeunea sp.
Oct. 26, Mt. Kaiap. 2700 m Alt.		
195	Cryptocaryt sp.	Drepanolejeunea sp.
234	Nothofagus grandis	Drepanolejeunea sp.
		Leptolejeunea sp.
		Meteorium sp.
252	(Bryophyta)	polytrichum sp.
253	(Bryophyta)	Plytrichum sp.
		Jackiella sp.
254	Lycopodium pritzelii	Jackiella sp.
		Riccardia sp.
257	(Bryopyta)	Jackiella sp.
		Frullania sp.
		Mastigophora sp.
279	Phreatia sp.	Plagiochilon oppositus
		Lejeunea sp.
		Dicranum sp.
281	Glossorhycha sp.	Radula densifolia
282	Ctenopteris contigua	Cheilolejeunea imbricata
285	Glossorhyncha sp.	Lejeunea cucullata
		Plagiochila spp. (3 spp.)
287	Ctenopteris celebica	Plagiochila spathulaefolia
		Drepanolejeunea sp.
291	Thelypteris obtusata	Lophocolea sp.
293	Thelypteris sp.	Lophocolea sp.
296	Ceratostylis sp.	Cheilolejeunea ceylanica
		Lejeunea discreta
		Cheilolejeunea sp.
297	Agrostophyllum sp.	Lejeunea discreta
		Plagiochila oppositus
298	Bulbophyllum sp.	Frullania pauciramea
		Lejeunea discreta
299	Bulbophyllum sp.	Radula densifolia
300	Phreatia sp.	Plagiochia dendroides Plagiochila
302	Dendrobium sp.	Lejeunea cucullata
		Radula ovalilobula
		Frullania sp.
303	Ceratostylis sp.	Mastigolejeunea humilis
		Radula densifolia

Coll. no.	Species name	Detached bryophyta
		Radula amentulosa
304	Calanthe sp.	Plagiochila dendroides
		Lejeunea sp.
306	Liparis sp.	Cololejeunea triapiculata
		Floribundaria sp.
307	Glomera sp.	Frullania carrii var. subcarrii
		Frullania reflexistipula
308	Glossorhyncha sp.	Frullania sp.
		Radula sp.
310	Dendrobium sp.	Radula amentulosa
		Herberta sp.
317	Meringium ovatum	Plagiochila spathulaefolia
		Lejeunea sp.
		Taxiphyllum sp.
319	Bulbophyllum sp.	Plagiochila dendroides
320	Agrostophyllum sp.	Lepidozia sp.
321	Mediocalcar sp.	Lejeunea discreta
		Lejeunea cucullata
		Lejeunea spp.
322	Giulianettia sp.	Lejeunea sp.
323	Dendrobium sp.	Plagiochilon pachycephala
325	Crypsinus sp.	Plagiochilon braunianus
		Plagiochilon spp. (2 spp.)
		Campylopus sp.
326	Dendrobium sp.	Plagiochila gymnoclada
		Schlotheimia sp.
328	Phreatia sp.	Plagiochila gymnoclada
		Radula sp.
		Herberta sp.
	Oct. 31, Baiyer River, alt. 1700-1200 m.	
340	Dianella sp.	Campylolejeunea peculiaris
		Cololejeunea sp.
		Lejeunea sp.
		Hypnum sp.
341	Dianella sp.	Isopterygium sp.
342	Dichrotrichum sp.	Frullania sp.
344	Spassogrotis sp.	Campylopus sp.
348	Ceratostylis sp.	Frullania sp.
		Jackiella sp.
349	Ceratostylis sp.	Thysanthus convolutus
350	Glossorhyncha sp.	Cheilolejeunea ceylanica
351	Bulbophyllum sp.	Cheilolejeunea ceylanica
		Cheilolejeunea imbricata
353	Bulbophyllum sp.	Lopholejeunea sp.

Coll. no.	Species name	Detached bryophyta
354	Glomera sp.	Lejeunea discreta Lejeunea sordida Dicranoloma sp.
356	Piper sp.	Cheilolejeunea sp.
357	Helicia sp.	Netzgeriopsis pusilla Derpanolejeunea sp. Cheilolejeunea sp. Cololejeunea sp. Leptolejeunea sp.
358	Nothofagus grandis	Leptolejeunea sp. Cheilolejeunea sp.
361	Schizomeria sp.	Drepanolejeunea sp. Leucolejeunea sp. Lejeunea spp. Thysanthus appendiculata
362	Nothofagus grandis	Colura sp. Plagiochila sp.
366	Nephrolepia sp.	Lejeunea sp.
367	Nephrolepia sp.	Lejeunea sp.
380	Schuurmansia sp.	Drepanolejeunea sp.
382	Proclis sp.	Drepanolejeunea sp.
Nov. 1, Baiyer River, alt. 1500 m.		
389		Drepanolejeunea sp. Colura sp.
390	Syzygium sp.	Lopholejeunea subfusca Lopholejeunea nigricans Lejeunea sp.
395	Ctenopteris sp.	Radula amentulosa Radula madagascariensis (cf.)
Nov. 6, Lufa, alt. 2200 m.		
398	Crypsinus so.	Plagiochilon gymnoclada
400	Podocarpus sp.	Cheilolejeunea sp.
412	Aeschynanthus sp.	Cheilolejeunea vittata Frullania sp. Drepanolejeunea sp.
415		Frullania pauciramea
417	Bulbophyllum sp.	Cheilolejeunea sp. Drepanolejeunea sp. Plagiochila gymnoclada Plagiochilon oppositus Herberta sp.
419	Bulbophyllum sp.	Cheilolejeunea sp. Frullania sp.

Coll. no.	Species name	Detached bryophyta
Nov. 8, Marafunga		
431	<i>Rhododendron phaeochitum</i>	<i>Cheiolejeunea</i> sp.
437	<i>Grammitis graminifolia</i>	<i>Floribundarja floribunda</i> <i>Lejeunea</i> sp.
Nov. 9, Daulo Pass, slt. 2380 m.		
441	<i>Microsorium linguaeforme</i>	<i>Lejeunea</i> sp.
444	<i>Mecodium opacum</i>	<i>Plagiochila dendroides</i> <i>Cheilolejeunea</i> sp. <i>Lejeunea</i> sp. <i>Ctenidium</i> sp.
445	<i>Marattia novoguineensis</i>	<i>Leptolejeunea schiffneri</i> <i>Leptolejeunea</i> sp. <i>Lejeunea</i> sp.
446	<i>Ctenopteris curtisii</i>	<i>Hypnodendron</i> sp.
447	<i>Mackinlaya schlechteri</i>	<i>Lejeunea</i> sp. <i>Cheilolejeunea</i> sp.
451	<i>Amaracarpus</i> sp.	<i>Frullania papillata</i> <i>Thysanthus</i> sp.
452	<i>Ficus</i> sp.	<i>Lejeunea</i> sp.
453	<i>Ficus</i> sp.	<i>Meteorium longipilum</i>
454		<i>Meteorium longipilum</i> <i>Drepanolejeunea</i> sp. <i>Cololejeunea</i> sp.
455		<i>Lejeunea kinabaluensis</i> <i>Bryum</i> sp.
456		<i>Lejeunea</i> sp. <i>Thysanthus</i> sp. <i>Plagiochila</i> sp.
457		<i>Cheilolejeunea imbricata</i> <i>Cheilolejeunea ceylanica</i> <i>Drepanolejeunea</i> sp.
458	<i>Ardisia</i> sp.	<i>Cololejeunea</i> sp. <i>Papillaria</i> sp.
462	<i>Psychotria nanus-frutex</i>	<i>Cheilolejeunea vittata</i> <i>Meteorium longipilum</i>
464		<i>Frullania</i> sp.
468	<i>Piper triangulare</i>	<i>Drepanolejeunea</i> sp. <i>Daltonia</i> sp.
469	(Bryophyta)	<i>Lejeunea</i> sp. <i>Brachythecium</i> sp.
470	<i>Dendrobium</i> sp.	<i>Lejeunea</i> sp.

Coll. no.	Species name	Detached bryophyta
		Nov. 15, Mt. Kaindi, alt. 2400.
471		Frullania shinii (tentative name)
473		Tuyamaella serratiatipula Plagiochilon braunianus Frullania sp. Drepanolejeunea sp.
475		Cheilolejeunea excisula Drepanolejeunea sp. Frullania sp.
476		Leucobryum sp. Frullania sp. Rhizogonium sp.
477	Vittaria ensiformis	Bazzania vittata Frullania sp.
480	Culcita javanica	Plagiochilon oppositus
481	Oleandra sibboldii	Frullania sp. Bazzania sp. Frullania sp.
483	Phyllocladus sp.	Drepanolejeunea sp. Cheilolejeunea sp.
486		Mnium sp.
487	Alphitonia ferruginea	Lophocolea sp.
488	(Bryophyta)	Bazzania loricata Lepidozia grandifolia Leucobryum sp. Lepidozia sp.
489	(Bryophyta)	Lophocolea sp. Sphagnum junghuhnianum sp. junghuhnianum Leucobryum sp. Pallavicinia sp.
490	(Bryophyta)	Moerkia sp. Bazzania levieri Frullania sp.
491	(Bryophyta)	Dicranoloma sp. Bazzania levieri
493	(Bryophyta)	Frullania sp. Lepidozia cladorrhiza Bazzania loricata Lophocolea sp.
494	(Bryophyta)	Semetophyllaceae Plagiochila dendroides Plagiochilon oppositus Bazzania erosa Frullania ternatensis

Coll. no.	Species name	Detached bryophyta
		Anastrophyllum sp.
		Bazzania sp.
		Acroporium sp.
495	(Bryophyta)	Mastigophora diclados
496	(Bryophyta)	Lepidozia cladorhiza
497	(Bryophyta)	Schistochila schulzei
		Frullania sp.
		Sematophyllaceae
498	(Bryophyta)	Sphagnum junghuhnianum ssp. junghuhnianum
		Leucobryum sp.
		Trichocolea sp.
		Lophocolea sp.
499	(Bryophyta)	Anastrophyllum bidens
		Leucobryum sp.
		Campylopus sp.
		Bazzania sp.
		Limbidium sp.
500	(Bryophyta)	Leucobryum sp.
501	(Bryophyta)	Bazzania morokensis
		Lepidozia grandifolia
		Lepidozia wallichiana
		Lepidozia cladorhiza
		Lepidozia sp.
		Lophocolea sp.
		Brotherera sp.
502	(Bryophyta)	Telaranea kogiana
		Sematophyllaceae
503	Vaccinium sp.	Bazzania lavieri
		Frullania sp.
504		Sphagnum sp.
505	Ficus sp.	Frullania papillata
		Lepidozia subintegra
		Bazzania suhusterana
507	Rhododendron sp.	Frullania sp.
		Nov. 16, Aseki alt. 2100 m.
509		Lejeunea lumbricoides
		Frullania sp.
510		Spiridens longifolius
		Radula lacerata
		Frullania sp.
511		Lejeunea sp.
514		Colura acroloba
		Drepanolejeunea spp.
515		Frullania sp.

Coll. no.	Species name	Detached bryophyta
517		Floribundaria pseudofloribunda Lophocolea sp. Chiloscyphus sp.
518		Diplasiolejeunea jovet-astae Drepanolejeunea sp.
519		Drepanolejeunea sp.
520		Dawsonia superba Frullania sp.
521		Bazzania morokensis Lepidozia subintegra Plagiochila dendroides Plagiochilon oppositus Lepidozia sp.
522	Calymmodon mnioides	Bazzania parvixta Pleurozia sp. Acroporium sp. Syrrophodon sp.
523		Schistochila schultzei Lepidozia subintegra Cheilolejeunea gigantia Hypnodendron sp.
524	(Bryophyta)	Lepidozia subintegra Chiloscyphus sp.
525	(Bryophyta)	Riccardia sp. Cephalozia sp. Bazzania sp. Chiloscyphus sp. Lepidozia sp.
526	(Bryophyta)	Bazzania missiona Riccardia sp.
527	(Bryophyta)	Bazzania erosa Frullania apiculata
528	(Bryophyta)	Schistochila schultzei Lophocolea sp.
529	Macroglena meifolia	Schistochila schultzei Lepidozia cladorrhiza Kurzia sp. Lepidozia sp.
531		Tuyamaella serratistipula Drepanolejeunea sp.
532	(Bryophyta)	Lepidozia subintegra
534	Bulbophyllum sp.	Plagiochilon braunianus Frullania sp.
537	Marattia sp.	Ptychocoleus sp.
539	Asplenium affine	Cheilolejeunea ceylanica

Coll. no.	Species name	Detached bryophyta
		Tuyamaella serratistipula
		Cololejeunea sp.
		Lejeunea sp.
		Drepanolejeunea sp.
		Trichosteleum sp.
546	Ctenopteris sp.	Telaranea trisetosa
547	Ctenopteris tenuisecta	Bazzania morokensis
		Chiloscyphus sp.
		Lophocolea sp.
		Dicranum sp.
548	Lindsaya schultzei	Plagiochila dendroides
		Floribundaria floribunda
		Lejeunea sp.
		Cololejeunea spp.
550	Grammitis kuntisfordiana	Telaranea neasii
		Prinolejeunea semperiana
		Cololejeunea peraffinis
		Bazzania sp.
		Dicranoloma sp.
		Syrrhopodon sp.
551	Mecodium opacum	Lejeunea lumbricoides
		Bazzania missiona
		Floribundaria floribunda
		Syrrhopodon sp.
552	Meringium rubellum	Bazzania uncigera
		Tuyamaella serratistipula
		Cololejeunea sp.
Nov. 18, Bulldog Road, alt. 2400 ± 200 m. in Castanopsis mossy forest.		
563	Dacrydium imbricatus	Cheilolejeunea imbricata
		Frullania sp.
566	Medinilla sp.	Cheilolejeunea imbricata
		Barbella sp.
568	Medinilla sp.	Frullania sp.
569	Alpina sp.	Drepanolejeunea sp.
570	Selliguea plantaginea	Cololejeunea sp.
		Riccardia sp.
		Wizikia sp.
571	(Bryophyta),	Distichophyllum sp.
572	(Bryophyta)	Mastigophora diclados
573	(Bryophyta)	Mastigophora diclados
		Plagiochila sp.
574	(Bryophyta)	Campyloopsis sp.
		Jungermannia sp.

Coll. no.	Species name	Detached bryophyta
		Jackiella sp.
575		Rhacopilum sp.
576	(Bryophyta)	Hypnum sp.
	(Bryophyta)	Heteroscyphus sp.
		Tricocolea sp.
577		Pallavicinia sp.
	(Bryophyta)	Hypnum sp.
		Moerkea sp.
		Dicranum sp.
		Pterygophyllum sp.
579		Polytrichum sp.
	(Bryophyta)	Jungermannia sp.
		Cephaloziella sp.
		Lepidozia sp.
		Temnoma sp.
580	(Bryophyta)	Campylopus sp.
581	(Bryophyta)	Anastrophyllum sp.
		Jungermannia sp.
		Campylopus sp.
		Dicnemon sp.
583		Anastrophyllum sp.
584	Lycopodium cernuum	Frullania sp.
588	Vaccinium sp.	Frullania sp.
590	Syzygium sp.	Cheilolejeunea imbricata
591		Frullania pauciramea
		Cheilolejeunea sp.
		Drepanolejeunea sp.
592		Cheilolejeunea sp.
		Drepanolejeunea sp.
		Frullania sp.
595		Frullania sinuata subsp. novoguineensis
		Frullania sp.
599	Agrostophyllum sp.	Drepanolejeunea vesiculosa
		Frullania sp.
		Lejeunea sp.
601	Phleatia sp.	Anastrophyllum sp.
604	Dendrobium sp.	Frullania sp.
		Metzgeria sp.
		Plagiochila sp.
		Chiloscyphus sp.
		Herberta sp.
605	Dendrobium sp.	Frullania sp.
		Plagiochila sp.
		Chiloscyphus sp.
606	Crypsinus sp.	Anastrophyllum sp.

Coll. no.	Species name	Detached bryophyta
607	Calymmodon pergracillnum	Plagiochila abietina Thuidium sp.
608	(Bryophyta)	Frullania subdentata Frullania pauciramea
609	(Bryophyta)	Chilocsyphus sp. Schistochila sciurea Mastigophora diclados Anastrophyllum sp. Jackiella sp.
610	(Bryophyta)	Campylopus sp. Jackiella sp.
611	(Bryophyta)	Jungermannia sp. Plagiochilon oppositus Kurzia sp.
614	Rhododendron sp.	Frullania sp.
616	Rhododendron sp.	Frullania sp.
618	Rhododendton sp.	Frullania papuana Frullania junghuhniana var. minutissima Cheilolejeunea sp.
619	Rhododendron sp.	Frullania sp.
Nov. 19, Bulldog Road alt. 2600 m. in Nothofagus mossy fgrest		
623		Plagiochila sp.
633	Gentiana sp.	Jungermannia sp.
635	Dacrycarpus sp.	Drepanolejeunea sp.
638		Cheilolejeunea excisula
640		Frullania sp.
642	Schefflera sp.	Cheilolejeunea sp. Drepanolejeunea sp. Leptolejeunea sp. Cololejeunea sp.
643		Drepanolejeunea sp.
644		Drepanolejeunea sp.
645		Drepanolejeunea sp. Cololejeunea sp.
646	(Bryophyta)	Mastigophora diclados Dicranum sp. Herberta sp. Frullania sp. Dicranoloma sp.
647	(Bryophyta)	Lepidozia hasskarlina Sphagnum junghuhnianum ssp. junghuhnianum Vesicularia sp.

Cll. no.	Species name	Detached bryophyta
648	(Bryophyta)	Sphagnum junghuhnianum ssp. junghuhnianum Plytricum sp.
649	(Bryophyta)	Telaranea lawesii Fissidens sp. Heteroscyphus sp.
Nov. 18, Bulldog Road alt. 2400 m. in Nothofagus forest.		
670		Drepanolejeunea sp.
672		Drepanolejeunea sp.
675		Frullania sp.
676		Frullania sp. Drepanolejeunea sp. Lejeunea sp.
678		Meteorium longipilum Drepanolejeunea sp.
679		Ectropothecium sp.
682		Drepanolejeunea sp. Cheilolejeunea sp.
683		Ectropothecium sp.
684	(Bryophyta)	Dawsonia superba Floribundaria floribunda
688	Rhododendron sp.	Frullania papuana
689	Rhododendron sp.	Metzgeria sp.
693	Rhododendron sp.	Frullania junghuhniana var. minutissima
699	Rhododendron sp.	Lophocolea sp.
702	(Bryophyta)	Trachyloma indicum Lejeunea sp. Campylopus sp.
703	(Bryophyta)	Campylopus sp.
704	(Bryophyta)	Marchantia sp. Lophocolea sp.
705	(Bryophyta)	Marchantia sp.
706	Mediocalcar sp.	Lepidozia hasskarlina Plagiochila sp.
707	Liparis sp.	Lophocolea sp. Syrrhopodon sp.
Nov. 1, Baiyer River, alt. 1500 m.		
721	Asplenium phyllitidis ssp. malesicum	Leptolejeunea epiphylla
722	Asplenium nidus	Leptolejeunea epiphylla Cololejeunea sp.

Coll. no.	Species name	Detached bryophyta
		Nov. 2, Mt. Hagen alt. 1500 m.
733	<i>Dendrobium</i> sp.	<i>Plagiochila</i> sp. <i>Frullania</i> sp.
734	<i>Bulbophyllum</i> sp.	<i>Frullania subdentata</i> <i>Plagiochila</i> sp. <i>Herberta</i> sp.
		Nov. 5, Goroka alt. 2000 m.
748	<i>Elaphoglossum blumei</i>	<i>Frullania calcarata</i> <i>Floribundaria floribunda</i>
749	<i>Rhododendron</i> sp.	<i>Meteorium miquelianum</i>
752		<i>Meteorium miquelianum</i>
		Nov. 6, Lufa alt. 2200 m. in <i>Castanopsis</i> forest
759	<i>Kibara</i> sp.	<i>Frullania</i> sp.
763	<i>Grossorhyncha</i> sp.	<i>Frullania</i> sp.
770		<i>Frullania nobilis</i>
779		<i>Cololejeunea</i> sp. <i>Taxiphyllum</i> sp.
782		<i>Cololejeunea lanciloba</i> <i>Cololejeunea</i> sp.

Part. I I.

Sphagnaceae

Sphagnum Junghuhnianum DOZY et MOLKENB. subsp. *junghuhnianum*

Morobe Province, Mt. Kaindi, 2400 m alt. in *Castanopsis* mossy forest, coll.

H. TAGAWA no. 489, 498. herb. SHIN-28290, 28320. Bulldog Road, 2600 m alt. in *Nothofagus* forest, coll. H. TAGAWA no. 647, 648. herb. SHIN-28515, 28518.

Pterobryaceae

Trachyloma indicum MITT.

Morobe Province, Bulldog Road, 2800 m alt. in *Nothofagus* forest. coll. H. TAGAWA no. 702. herb. SHIN-28545.

Meteoriaceae

Meteorium longipilum NOGUCHI

Eastern Highlands Province, Daulo pass, 2380 m alt. in mossy forest, coll. H. TAGAWA no. 453, 454, 462. herb. SHIN-28230, 28232, 28248. Morobe Province, Bulldog Road, 2300 m alt. on bark in *Nothofagus* forest, coll. H. TAGAWA no. 678. herb. SHIN-28532. *Meteorium miquelianum* (C. MUELL.) FL. in Broth.

Eastern Highlands Province, Goroka, 2000 m alt. on bark of *Rhododendron* Theneda grassland, coll. H. TAGAWA no. 749, 752. herb. SHIN-28568, 28569.

Floribundaria floribuda (Doz. et Molk.) FLEISCH.

Morobe Province, Bulldog Road, 2300 m alt. on stem of *Dawsonia* sp. coll.

H. TAGAWA no. 684. herb. SHIN-28537.

Floribundaria pseudofloribunda (Doz. et Molk.) FLEISCH.

Morobe Province, Aseki, 2100 m alt. on leaf in *Castanopsis* mossy forest. coll.

H. TAGAWA no. 517. herb. SHIN-28353.

Spiridentaceae

Spiridens longifolius LINDB.

Morobe Province, Aseki, 2100 m alt. in *Castanopsis* mossy forest, coll. H. TAGAWA no. 510. herb. SHIN-28578.

Dawsoniaceae

Dawsonia superba GREV.

Morobe Province, Aseki 2100 m alt. in *Castanopsis* mossy forest, coll. H. TAGAWA no. 520. herb. SHIN-28579.

Ptilidiaceae

Mastigophora diclados (BRID.) NEES

Morobe Province, Mt. Kaindi 2400 m alt. in *Castanopsis* mossy forest, coll. H.

TAGAWA no. 495. herb. SHIN-28312, Bulldog Road 2400 m alt. in *Castanopsis* mossy forest, coll. H. TAGAWA no. 572, 573. herb. SHIN-28423, 28424. 2500 m alt. in *Castanopsis* mossy forest, coll. H. TAGAWA no. 609. herb. SHIN-28465. 2600 m alt. in *Nothofagus* forests, coll. H. TAGAWA no. 646. herb. SHIN-28510.

Lepidoziaceae

Lepidozia cladorrhiza (REINW. et al.) LINDENB.

Morobe Province, Mt. Kaindi 2400 m alt. in *Castanopsis* mossy forest, coll.

H. TAGAWA no. 493, 496, 501. herb. SHIN-28299, 28313, 283332 + *Lepidozia grandifolia* + *Lepidozia* sp. Aseki 2100 m alt. in *Castanopsis* mossy forest, coll. H. TAGAWA no. 529. herb. SHIN-28384.

Lepidozia grandifolia STEPH.

Morobe Province, Mt. Kaindi, 2400 m alt. in *Castanopsis* mossy forest, coll.

H. TAGAWA no. 488, 501. herb. SHIN-28280, 28332 + *Lepidozia cladorrhiza* + *Lepidozia* sp. *Lepidozia hasskarliana* (LINDENB.) STEPH.

Morobe Province, Bulldog Road 2600 m alt. in *Nothofagus* forest, coll. H. TAGAWA no. 647. herb. SHIN-28516, 2800 m alt. in *Nothofagus* forest coll. H. TAGAWA no. 706. herb. SHIN-28552.

Lepidozia subintegra LINDENB.

Morobe Province, Mt. Kaindi, 2400 m alt. in *Castanopsis* mossy forest, coll.

H. TAGAWA no. 505. herb. SHIN-28341, Aseki, 2100 m alt. in *Castanopsis* mossy forest, coll. H. TAGAWA no. 521, 523, 524, 532. herb. SHIN-28360, 28369, 28373, 28388.

Lepidozia wallichiana GOTT.

Morobe Province, Mt. Kaindi 2400 m alt. coll. H. TAGAWA no. 501. herb.

SHIN-28330.

Bazzania erosa (NEES) TREV.

Morobe Province, Mt. Kaindi 2400 m alt. in *Castanopsis* mossy forest. coll.

H. TAGAWA no. 494. herb. SHIN-28309. Aseki 2100 m alt. in *Castanopsis* mossy forest, coll. H. TAGAWA no. 527. herb. SHIN-28380.

Bazzania ledermannii (STEPH.) N. KITAG.

Morobe Province, Mt. Kaindi 2400 m alt. in *Castanopsis* mossy forest, coll.

H. TAGAWA no. 494. herb. SHIN-28302.

Bazzania levieri (STEPH.) N. KITAG.

Morobe Province, Mt. Kaindi 2400 m alt. in *Castanopsis* mossy forest, coll.

H. TAGAWA no. 490, 491, 503. herb. SHIN-28292, 28295, 28337.

Bazzania loricata (NEES) TREV.

Morobe Province. Mt. Kaindi 2400 m alt. in *Castanopsis* mossy forest, coll.

H. TAGAWA no. 488, 493. herb. SHIN-28286, 28300.

Bazzania missiona (HERZ.) JOVET-AST.

Morobe Province, Aseki 2100 m alt. in *Castanopsis* mossy forest, coll. H. TAGAWA no. 526, 551. herb. SHIN-28377, 28408.

Bazzania morokensis (STEPH.) GROLLE.

Morobe Province, Mt. Kaindi 2400 m alt. coll. H. TAGAWA no. 501. herb. SHIN-28328. Aseki 2100 m alt. in *Castanopsis* mossy forest, coll. H. TAGAWA no. 521, 547. herb. SHIN-28362, 28396.

Bazzania parvixata STEPH.

Morobe Province, Aseki 2100 m alt. on rhizoid of *Hymenophyllum* in *Castanopsis* mossy forest. coll. H. TAGAWA no. 522. herb. SHIN-28367.

Bazzania schusterana N. KITSG.

Morobe Province, Mt. Kaindi, 2400 m alt. on branch of *Ficus* in *Castanopsis* mossy forest, coll. H. TAGAWA no. 505. herb. SHIN-28343.

Bazzania uncigera (REINW., BL. et NEES) TREV.

Morobe Province, Aseki 2100 m alt. on leaf of *Hymenophyllum* in *Castanopsis* mossy forest. coll. H. TAGAWA no. 552. herb. SHIN-28413.

Bazzania vittata (GOTT.) TREV.

Morobe Province, Mt. Kaindi 2400 m alt. coll. H. TAGAWA no. 477. herb. SHIN-28270.

Telaranea Kogiana (STEPH.) GROLLE.

Morobe Province, Mt. Kaindi 2400 m alt. in *Castanopsis* mossy forest. coll.

H. TAGAWA no. 502. herb. SHIN-28335.

Telaranea neesii (LINDENB.) FULF

Morobe Province, Aseki 2100 m alt. in *Castanopsis* mossy forest, coll. H. TAGAWA no. 550. herb. SHIN-28402 + *Prinolejeunea semperima* + *Cololejeunea peraffinis*.

Telaranea lawesii (STEPH.) GROLLE.

Morobe Province, Bulldog Road 2600 m alt. in *Nothofagus* forest, coll. H. TAGAWA no. 649. herb. SHIN-28522.

Telaranea trisetosa (STEPH.) GROLLE.

Morobe Province, Aseki 2100 m alt. on leaf of fern in *Castanopsis* forest, coll. H. TAGAWA no. 546. herb. SHIN-28395.

Lophoziaceae

Anastrophyllu bidens (REINW. et al.) STEPH.

Morobe Province, Mt. Kaindi 2400 m alt. in *Castanopsis* mossy forest, coll. H. TAGAWA no. 499. herb. SHIN-28323.

Plagiochilaceae

Plagiochila abietina NEES.

Morobe Province, Bulldog Road 2500 m alt. on rhizoid of fern, coll. H. TAGAWA no. 607. herb. SHIN-28470.

Plagiochila dendroides (NEES) LINDENB.

Enga Province, Mt. Kaiap in *Nothofagus* forest. coll. H. TAGAWA no. 65, 300, 304, 319. herb. SHIN-28023 + *Plagiochilon oppositus*, 28121, 28127, 28139. Eastern Highlands Province, Daulo Pass 2380 m alt. on stipe of *Hymenophyllum*, coll. H. TAGAWA no. 444. herb. SHIN-28217, Morobe Province Mt. Kaindi 2400 m. alt. in *Castanopsis* mossy forest, coll. H. TAGAWA no. 494. herb. SHIN-28305 + *Plagiochilon oppositus*. Aseki 2100 m alt. on leaf of fern in *Castanopsis* forest, coll. H. TAGAWA no. 521, 548. herb. SHIN-28363 + *Plagiochilon oppositus*, 28399.

Plagiochila gymnoclada S. LAC.

Enga Province, Mt. Kaiap 2500 m alt. coll. H. TAGAWA no. 33, 121, 326, 328. herb. SHIN-28006, 28057, 28154, 28158. Eastern Highlands Province, Lufa 2200 m alt. in *Castanopsis* forest, coll. H. TAGAWA no. 398, 417. herb. SHIN-28196 + *Plagiochilon oppositus*.

Plagiochila spathulaefolia MITT.

Enga Province, Mt. Kaiap 2500 m alt. in *Nothofagus* forest, coll. H. TAGAWA no. 121, 287, 317. herb. SHIN-28056, 28109, 28144.

Plagiochilon braunianus (NEES) HATT.

Enga Province, Mt. Kaiap in *Nothofagus* forest, coll. H. TAGAWA no. 325. herb. SHIN-28151 + *Plagiochila* sp., Morobe Province, Mt. Kaindi 2400 m alt. on branch in *Castanopsis* mossy forest, coll. H. TAGAWA no. 473, herb. SHIN-28258. Aseki 2100 m alt. in *Castanopsis* mossy forest, coll. H. TAGAWA no. 534. herb. SHIN-28389.

Plagiochilon oppositus (REINW. et al.) HATT.

Enga Province, Mt. Kaiap, coll. H. TAGAWA no. 65, 94, 279, 297. herb. SHIN-28023 + *Plagiochila dendroides*, 28048, 28101, 28116. Morobe Province, Mt. Kaindi 2400 m alt. in *Castanopsis* mossy forest, coll. H. TAGAWA no. 481, 494. herb. SHIN-28274, 28305 + *Plagiochila dendroides*, Aseki 2100 m alt. coll. H. TAGAWA no. 521. herb. SHIN-28363 + *Plagiochila dendroides*. Bulldog Road 2500 m alt. in *Castanopsis* forest, coll. H. TAGAWA no. 611, 612. herb. SHIN-28485, 28487. Eastern Highlands Province, Lufa 2200 m alt. in *Castanopsis* forest, coll. H. TAGAWA no. 417. herb. SHIN-28203 + *Plagiochila gymnoclada*. *Plagiochilon pachycephalus* (De NOT.) LNOUE.

Enga Province, Mt. Kaiap on stem of *Dendrobium* in *Nothofagus* forest, coll. H. TAGAWA no. 323. herb. SHIN-28148.

Schistochilaceae

Schistochila sciurea (NEES) SCHIFFN.

Morobe Province, Bulldog Road 2500 m alt. in *Castanopsis* forest, coll. H. TAGAWA no. 609. herb. SHIN-28479, 28481.

Schistocila schltzei STEPH.

Morobe Province, Aseki 2100 m alt. in *Castanopsis* mossy forest, coll. H. TAGAWA no. 523, 528, 529. herb. SHIN-28371, 28382, 28386. Mt. Kaindi 2400 m alt. in *Castanopsis* forest, coll. H. TAGAWA no. 497. herb. SHIN-28318.

Radulaceae

Radula amentulosa MITT.

Enga Province, Mt. Kaiap in *Nothophagus* forest, coll. H. TAGAWA no. 41, 303, 310. herb. SHIN-28019, 28124 + *Radula densifolia*, 28136. Eastern Highlands Province, Lufa 2200 m alt. coll. H. TAGAWA no. 395. herb. SHIN-28581 + *Radula madagascariensis*.

Radula densifolia CASTLE.

Enga Province, Mt. Kaiap in *Nothophagus* forest, coll. H. TAGAWA no. 281, 299, 303. herb. SHIN-28103, 28120, 28124 + *Radula amentulosa*.

Radula lacerata STEPH.

Morobe Province, Aseki 2100 m alt. on stem of *Spiridens* in *Castanopsis* mossy forest. coll. H. TAGAWA no. 510. herb. SHIN-28349.

Radula ovalilobula YAMADA.

Enga Province, Mt. Kaiap on stem of *Dendrobium* in *Nothophagus* forest. coll. H. TAGAWA no. 302. herb. SHIN-28123 + *Frullania* sp. + *Lejeunea* sp.
cf. *Radula madagascariensis* GOTT.

Eastern Highlands Province, Lufa 2200 m alt. coll. H. TAGAWA no. 395. herb. SHIN-28581.

Frullaniaceae

Frullania apiculata (REINW. et al.) DUM.

Enga Province, Mt. Kaiap on rhizoid of *Humata* in *Castanopsis* forest. coll. H. TAGAWA no. 94. herb. SHIN-28047. Morobe Province, Aseki 2100 m alt. in *Castanopsis* forest, coll. H. TAGAWA no. 527. herb. SHIN-28379.

Frullania armitana STEPH.

Enga Province, Mt. Kaiap 2500 m alt. on stem base of *Bulbophyllum*, coll. H. TAGAWA no. 139. herb. SHIN-28063.

Frullania carrii KAMIM. et HATT. var. *subcarrii* HATT.

Enga Province, Mt. Kaiap on root of *Glomera* in *Nothophagus* forest, coll. H. TAGAWA no. 307. herb. SHIN-28131 + *Frullania reflexistipula*.

Frullania carcarata AONGSTR.

Eastern Highlands Province, Goroka 2000 m alt. on stipe of *Pyrrosia*, coll. H. TAGAWA no. 748. herb. SHIN-28567.

Frullania junghniana GOTT. var. *minutissima* SCHIFFN. ex. VERD.

Morobe Province, Bulldog Road 2500 m alt. on branch in *Castanopsis* forest, coll. H. TAGAWA no. 618. herb. SHIN-28493 + *Frullania papuaua*, 2800 m alt. on bark of *Elaeagnus*. coll. H. TAGAWA no. 693. herb. SHIN-28542.

Frullania nobilis STEPH.

Enga Province, Mt. Kaiap on branch, coll. H. TAGAWA no. 177, 183. herb. SHIN-28073, 28079 + *Frullania reflexistipula*. Western Highlands Province, Baiyer River, 1700 m alt. coll. H. TAGAWA no. 770. herb. SHIN-28572.

Frullania reflexistipula SANDE LACOSTE.

Enga Province, Mt. Kaiap on branch of *Acronichia* in *Nothophagus* forest, coll. H. TAGAWA no. 183. herb. SHIN-28079 + *Frullania nobilis*. on root of *Glomera* in *Nothophagus* forest, coll. H. TAGAWA no. 307. herb. SHIN-28131 + *Frullania carrii* var. *subcarrii*.

Frullania subdentata SANDE LACOSTE.

Morobe Province, Bulldog Road 2500 m alt. coll. H. TAGAWA no. 608. herb. SHIN-28474. Western Highlands Province, Mt. Hagen 1500 m alt. on stem and leaf of *Bulbophyllum*. coll. H. TAGAWA no. 734. herb. SHIN-28564.

Frullania sinuata SANDE LACOSTE subsp. *novoguineensis* HATT.

Morobe Province, Bulldog Road 2500 m alt. on branch in *Castanopsis* forest, coll. H. TAGAWA no. 595. herb. SHIN-28457.

Frullania papillata STEPH.

Eastn Highlands Province, Daulo Pass 2380 m alt. on branch of *Amaracarpus* in mossy forest, coll. H. TAGAWA no. 451. herb. SHIN-28225. Morobe Province Mt. Kaindi 2400 m alt. on branch in *Castanopsis* mossy forest, coll. H. TAGAWA no. 505. herb. SHIN-28342.

Frullania pauciramea STEPH.

Enga Province, Mt. Kaiap 2500 m alt. coll. H. TAGAWA no. 77, 119, 298. herb. SHIN 28029, 28054, 28119. Kompiam 2500 m alt. in *Mithcanthus* grssland, coll. H. TAGAWA no. 168. herb. SHIN-28067. Eastern Highlands Province, Lufa, 2200 m alt. coll. H. TAGAWA no. 415. herb. SHIN-28202. Morobe Province, Bulldog Road on branch in *Castanopsis* forest, coll. H. TAGAWA no. 591, 608. herb. SHIN-28451, 28471.

Frullania papuana VERB.

Enga Province, Mt. Kaiap, coll. H. TAGAWA no. 69. herb. SHIN-28024. Morobe Province, Bulldog Road 2500 m alt. on branch in *Castanopsis* forest, coll. H. TAGAWA no. 618. herb. SHIN-28493 + *Frullania junghuhniana* var. *minutissima*. 2300 m alt. coll. H. TAGAWA no. 688. herb. SHIN-28538.

Frullania ternatensis GOFF.

Morobe Province, Mt. Kaindi 2400 m alt. in *Castanopsis* mossy forest, coll. H. TAGAWA no. 494. herb. SHIN-28304, 28307.

Frullania serrata GOFF. var. *hamatispina* HATT.

Enga Province, Kompiam 2500 m alt. coll. H. TAGAWA no. no. 169. herb. SHIN-28070.

Frullania shinii HATT. (tentative name)

Morobe Province. Mt. Kaindi 2400 m alt. on bark in *Castanopsis* mossy forest, coll. H. TAGAWA no. 471. herb. SHIN-28257.

Lejeuneaceae

Campylojeunea peculiaris (HERZ.) AMAK.

Western Highlands Province, Baiyer River, 1200-1700 m alt. on leaf of *Dianella* sp., coll. H. TAGAWA no. 340. herb. SHIN-28159 + *Colojeunea* sp. + *Lejeunea* sp. *Cheilolejeunea longiloba* (HOFFM.) KACHR. et SCHUST.

Enga Province, Mt. Kaiap on leaf of *Syzygim*, coll. H. TAGAWA no. 33, herb. SHIN-28007 + *Drepanolejeunea* sp.

Cheilolejeunea ceylanica (GOTT.) SCHUST. et KACHR.

Enga Province, Mt. Kaiap on leaf and branch of *Pilea* sp., coll. H. TAGAWA no. 178. herb. SHIN-28074 + *Drepanolejeunea* sp., on stam of *Celatostylis*, coll. H. TAGAWA no. 296. herb. SHIN-28115 + *Lejeunea discreta*. Western Highlands Province, Baiyer River 1200-1700 m alt. coll. H. TAGAWA no. 350. herb. SHIN-28173, 28174. Morobe Province Aseki 2100 m alt. on leaf of fern in *Castanopsis* forest, coll. H. TAGAWA no. 539. herb. SHIN-28394 + *Tuyamaella serratistipa* + *Cololejeunea* sp. + *Drepanolejeunea* sp. Eastern Highlands Province, Daulo Pass 2380 m alt. on leaf and branch in mossy forest, coll. H. TAGAWA no. 457. herb. SHIN-28243 + *Cheilolejeunea imbricata*.

Cheilolejeunea gigantia (STEPH.) SCHUST. et KACHR.

Morobe Province, Aseki 2100 m alt. in *Castanopsis* mossy forest, coll. H. TAGAWA no. 523. herb. SHIN-28370.

Cheilolejeunea excisula (STEPH.) MIZUT.

Enga Province, Mt. Kaiap 2500 m alt. on rhizoid of fern in *Nothophagus* forest, coll. H. TAGAWA no. 129. herb. SHIN-28060 + *Diplasiolejeunea* sp., Morobe Province, Mt. Kaindi 2400 m alt. on branch in *Castanopsis* mossy forest, coll. H. TAGAWA no. 475. herb. SHIN-28264 + *Drepanolejeunea* sp., Bulldog Road 2600 m alt. on branch in *Nothophagus* forest coll. H. TAGAWA no. 638. herb. SHIN-28502.

Cheilolejeunea imbricata (NEES) HATT.

Morobe Province, Bulldog Road 2400 m alt. on bark of *Dacrydium umbricatus* in *Castanopsis* mossy forest, coll. H. TAGAWA no. 563. herb. SHIN-28414 + *Metzgeria* sp., on bark of *Madinella* sp. in *Castanopsis* mossy forest, coll. H. TAGAWA no. 566. herb. SHIN-28417. 2500 m alt. on bark in *Castanopsis* forest, coll. H. TAGAWA no. 590. herb. SHIN-28450. Enga Province, Mt. Kaiap on bark, coll. H. TAGAWA no. 35. herb. SHIN-28010. on rhizoid of *Glossorhyncha* sp. coll. H. TAGAWA no. 40. herb. SHIN-28017 + *Lejeunea discreta*, on branch of *Streblus* sp. coll. H. TAGAWA no. 184. herb. SHIN-28106. on rhizoid of fern in *Nothophagus* forest, coll. H. TAGAWA no. 282. herb. SHIN-28107. Western Highlands Province, Baiyer River 1200-1700 m alt. on branch, coll. H. TAGAWA no. 351. herb. SHIN-28174 + *Cheilolejeunea ceylanica*. Eastern Highlands Province, Daulo Pass 2380 m alt. on leaf and branch in mossy forest, coll. H. TAGAWA no. 457. herb. SHIN-28243 + *Cheilolejeunea ceylanica* + *Drepanolejeunea* sp. + *Cololejeunea* sp.

Cheilolejeunea trifaria (REINW. BLUME et NEES) MIZUT.

Enga Province, Mt. Kaiap in *Castanopsis* forest, coll. H. TAGAWA no. 78. herb. SHIN-28033.

Cheilolejeunea vittata (HOFFM.) SCHUST. et KACHR.

Enga Province, Mt. Kaiap in *Castanopsis* forest, coll. H. TAGAWA no. 74, 83. herb. SHIN-28028, 28036. on branch of *Acronychia* sp., coll. H. TAGAWA no. 183. herb. SHIN-28078 + *Drepanolejeunea* sp. Eastern Highlands Province, Daulo Pass 2380 m alt. on branch in mossy forest, coll. H. TAGAWA no. 462. herb. SHIN-28249. Lufa 2200 m alt. on leaf of *Aeschynanthus* sp., coll. H. TAGAWA no. 412. herb. SHIN-28201 + *Drepanolejeunea* sp. + *Frullania* sp.

Cololejeunea tripiculata (HERZ.) TIXIER.

Enga Province, Mt. Kaiap on rhizoid of *Liparis* sp., in *Nothophagus* forest. coll. H. TAGAWA no. 306. herb. SHIN-28130.

Cololejeunea lanciloba STEPH.

Morobe Province, Baso 200 m alt. in lowland rain forest, coll. H. TAGAWA no. 782

herb. SHIN-28575.

Cololejeunea peraffinis (SCHIFFN.) SCHIFFN.

Morobe Province, Aseki 2100 m alt. on leaf in *Castanopsis* mossy forest, coll. H. TAGAWA no. 550. herb. SHIN-28402 + *Telanea nesii* + *Prinolejeunea semperiana*.
Colura acroloba (STEPH.) JOV.-AST.

Morobe Province, Aseki 2100 m alt. on leaf in *Castanopsis* mossy forest, coll. H. TAGAWA no. 514. herb. SHIN-28351 + *Drepanolejeunea* sp.
Diplasiolejeunea jovet-astina GROLLE.

Morobe Province, Aseki 2100 m alt. on leaf in *Castanopsis* mossy forest, coll. H. TAGAWA no. 518. herb. SHIN-28355 + *Drepanolejeunea* sp.
Drepanolejeunea vesiculosa (MITT.) STEPH.

Morobe Province, Bulldog Road. 2500 m alt. on leaf in *Castanopsis* forest, coll. H. TAGAWA no. 599. herb. SHIN-28459 + *Lejeunea* sp.
Leptolejeunea epiphylla (MITT.) STEPH.

Western Highlands Province, Baiyer River 1500 m alt. on leaf of *Neottopteris* sp. coll. H. TAGAWA no. 721, 722. herb. SHIN-28559, 28560 + *Cololejeunea* sp.
Lejeunea discreta LINDB.

Enga Province, Mt. Kaiap on Rhizoid of *Glossorhyncha* sp. coll. H. TAGAWA no. 40. herb. SHIN-28107 + *Cheilolejeunea imbricata*. on stem of *Bulbophyllum* sp. coll. H. TAGAWA no. 85. herb. SHIN-28039. on leaf of *Vaccinium* sp. in *Castanopsis* forest, coll. H. TAGAWA no. 89. herb. SHIN-28045. on stem of *Celatostylis* sp. in *Nothophagus* forest, coll. H. TAGAWA no. 296. Herb. SHIN-28115 + *Cheilolejeunea ceylanica*. on leaf of *Agrostophyllum* sp. in *Nothophagus* forest, coll. H. TAGAWA no. 297, 298. herb. SHIN-28117, 28118. on stem of *Mediocarcha* sp. in *Nothophagus* forest, coll. H. TAGAWA no. 321, herb. SHIN-28146 + *Lejeunea cucullata*. Western Highlands Province, Baiyer River, 1200-1700 m alt. coll. H. TAGAWA no. 354. herb. SHIN-28178 + *Lejeunea sordida*.
Lejeunea sordida (NEES) NEES.

Western Highlands Province, Baiyer River 1200-1700 m alt. coll. H. TAGAWA no. 354. herb. SHIN-28178 + *Lejeunea discreta*.
Lejeunea cucullata (REINW. et al.) NEES.

Enga Province, Mt. Kaiap, 2500 m alt. on rhizoid of fern in *Miscanthus* grassland, coll. H. TAGAWA no. 130, 285. herb. SHIN-28061, 28108. on stem of *Dendrobium* sp. in *Nothophagus* forest, coll. H. TAGAWA no. 302. herb. SHIN-29122. on stem of *Mediocarcha* sp. in *Nothophagus* forest, coll. H. TAGAWA no. 321. herb. SHIN-28146 + *Lejeunea discreta*.

Lejeunea lumbricoides (NEES) NEES.

Morobe Province, Aseki 2100 m alt. on stem of Bamboo in *Castanopsis* mossy forest, coll. H. TAGAWA no. 509. herb. SHIN-28345. on rhizoid of *Hymenophyllum* sp. in *Castanopsis* mossy forest, coll. H. TAGAWA no. 551. herb. SHIN-28409.
Lejeunea kinabaluensis MIZUT.

Eastern Highlands Province, Daulo Pass, 2380 m alt. on stem in mossy forest, coll. H. TAGAWA no. 455. herb. SHIN-28237.
Lopholejeunea subfusca (NEES) STEPH.

Western Highlands Province, Baiyer River 1500 m alt. on branch of *Syzygium* sp., coll. H. TAGAWA no. 390. herb. SHIN-28195 + *Lejeunea* sp. + *Lopholejeunea nigricans*.

Lopholejeunea nigricans (LINDENB.) SCHIFFN.

Western Highlands Province, Baiyer River 1500 m alt. on branch of *Syzygium* sp., coll. H. TAGAWA no. 390. herb. SHIN-28195 + *Lejeunea* sp. – *Lopholejeunea subfusca*.

Mastigolejeunea humilis (GOTT.) SCHIFFN.

Enga Province, Mt. Kaiap, coll. H. TAGAWA no. 303. herb. SHIN-28125.

Thysanthus convolutus LINDENB.

Western Highlands Province, Baiyer River 1200-1700 m alt. on base of *Ceratostylis* sp., coll. H. TAGAWA no. 349. herb. SHIN-28168.

Thysanthus appendiculatus STEPH.

Western Highlands Province, Baiyer River 1200-1700 m alt. on branch and leaf, coll. H. TAGAWA no. 361. herb. SHIN-28182.

Tuyamaella serratistipa HATT.

Morobe Province, Mt. Kaindi 2400 m alt. on leaf in *Castanopsis* forest, coll.

H. TAGAWA no. 473. herb. SHIN-28529 + *Drepanolejeunea* sp. Aseki 2100 m alt. on leaf in *Castanopsis* mossy forest, coll. H. TAGAWA no. 531, 552, 539. herb. SHIN-28387 + *Drepanolejeunea* sp., 28412 + *Cololejeunea* sp., 28394 + *Cheilolejeunea ceylanica* + *Lejeunea* sp. + *Cololejeunea* sp. + *Drepanolejeunea* sp.

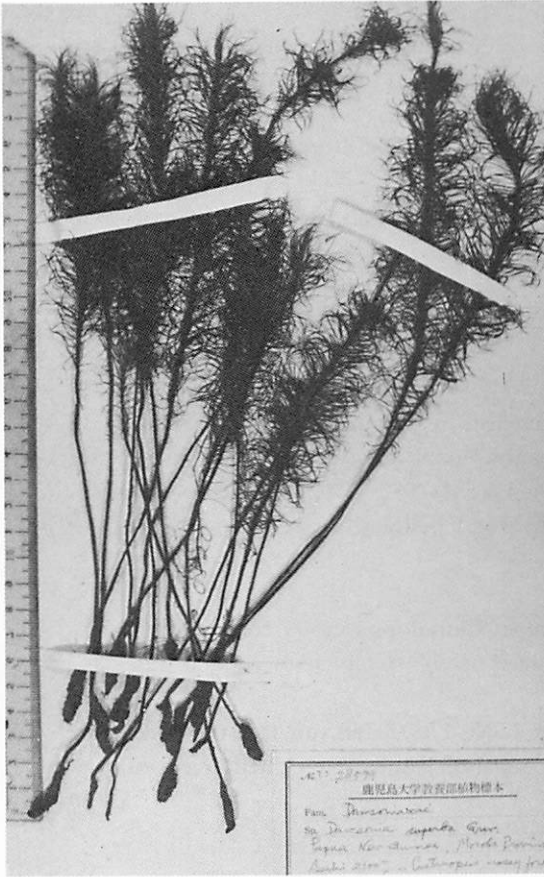
Prinolejeunea semperiana STEPH.

Morobe Province. Aseki 2100 m alt. on leaf in *Castanopsis* mossy forest, coll.

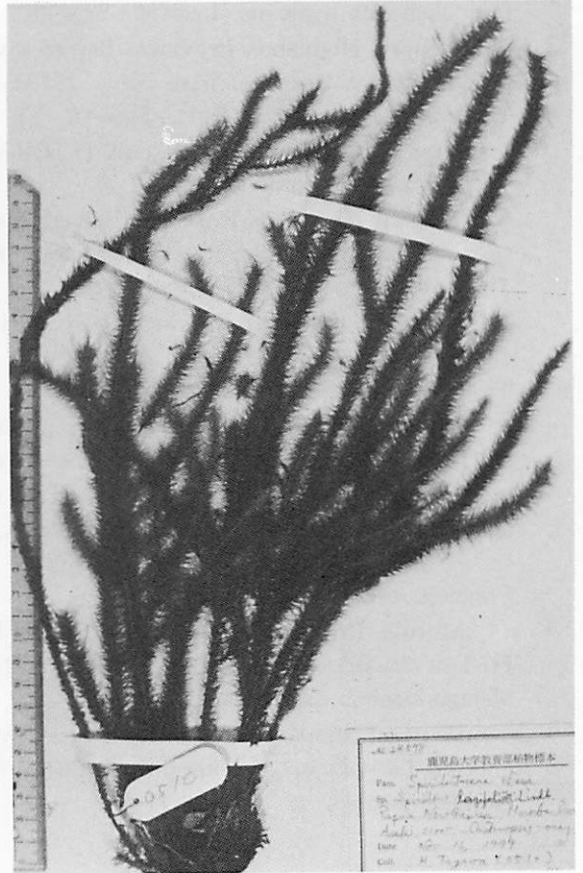
H. TAGAWA no. 550. herb. SHIN-28402 + *Telaranea neesii* + *Cololejeunea peraffinis*.

Metzgeriopsis pusilla GOEB.

Western Highlands Province, Baiyer River 1200-1700 m alt. on leaf of *Helicia* sp., coll. H. TAGAWA no. 357. herb. SHIN-28169 + *Drepanolejeunea* sp. + *Cheilolejeunea* sp. + *Cololejeunea* sp.



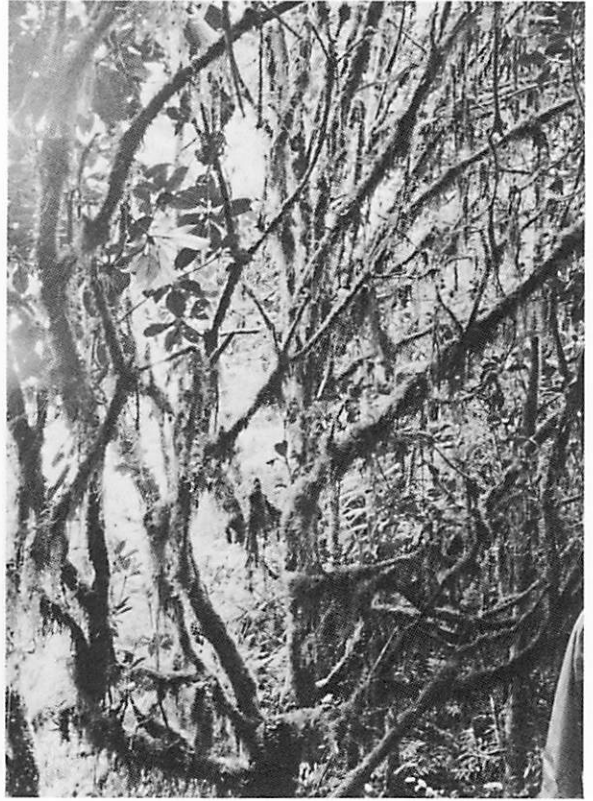
Dawsonia superva GREV.



Spilidens longifolius LINDB.



Mossy forest at Aseki (Phot. by H. TAGAWA)



Mossy forest on Bulldog Road
(Phot. by H. TAGAWA)



Mossy forest on Mt. Kaindi (Phot by H. TAGAWA)



Mossy forest at Daulo pass (Phot by H. TAGAWA)