

Dale Wolfe Custom Kitchens & Baths, Inc.

Proudly Serving the Susquehanna Valley Since 1975



The Imperial Line

By WOODMASTERS

Cabinetry

Product Specifications and Guide

Catalog # 3-112204

Dale Wolfe Custom Kitchens & Baths, Inc.

Proudly Serving the Susquehanna Valley Since 1975



Dale Wolfe Custom Kitchens & Baths, Inc. was established in 1975. The company began from one man's dream, where he wanted to provide value & service with quality cabinetry products. We are very proud that it is still a family owned & operated business. Dale Wolfe and his wife Bonnie are active participants in day-to-day operations of the company. We have more than a century of combined working experience in the sales & installation of custom cabinetry and counter tops, and we are very proud of the strong builder network that has been developed over the years. The Susquehanna Valley is served with roughly 400 kitchens a year by Dale Wolfe Custom Kitchens & Bath, Inc. We believe in providing the customer with excellent service that starts with the initial layout and continues through to the installation and completion of the job. We are pleased to appeal to all budgets, we work with the customer to make sure that they are getting the kitchen or vanity of their dreams. In these ever-changing times, many businesses have come and gone, but Dale Wolfe Custom Kitchens & Baths, Inc. has been in business since 1975 and our commitment to value & quality has remained the same.



The Imperial Line

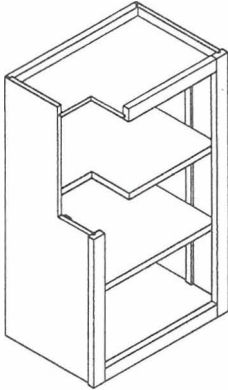
By **WOODMASTERS**

Cabinetry

Brought to you by

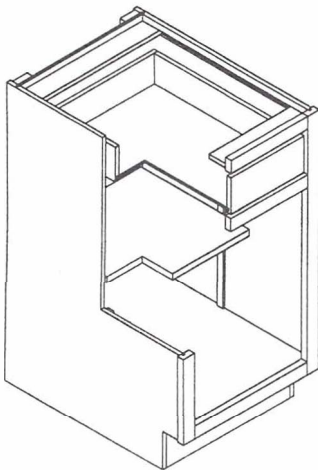
Dale Wolfe Custom Kitchens & Baths

PRODUCT SPECIFICATIONS



WALL CABINETS

- * FACE FRAMES - Solid hardwood (maple, oak or cherry.)
- * TOP AND BOTTOM FIXED SHELVES - 1/2" plywood.
- * LEFT AND RIGHT RETURNS - 1/2" plywood w/ exterior veneer (maple, oak or cherry.)
- * CABINET BACKS - 1/4" plywood.
- * SHELVING - 3/4" veneered MDF core.
- * SHELF STANDARDS - 1 1/4" incremental pin boring using metal spoon-bill pin for shelf supports.
- * INTERIOR - All wood with natural finish.

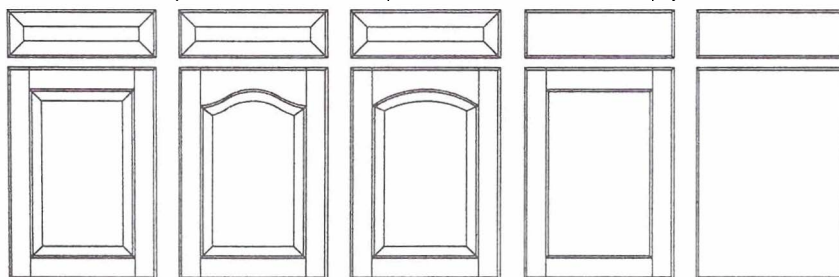


BASE CABINETS

- * FACE FRAMES - Solid hardwood (maple, oak or cherry.)
- * BOTTOM FIXED SHELVES - 1/2" plywood.
- * LEFT AND RIGHT RETURNS - 1/2" plywood w/ exterior veneer (maple, oak or cherry.)
- * CABINET BACKS - 1/4" plywood.
- * SHELVING - 2/3 deep 3/4" veneered MDF core.
- * SHELF STANDARDS - 1 1/4" incremental pin boring using metal spoon-bill pin for shelf supports.
- * INTERIOR - All wood with natural finish.
- * DRAWER BOX - 5/8" basswood with dovetail construction. Fully captioned 1/4" bottom.
- * DRAWER GLIDES - European style epoxy coated. All metal. (No plastic boot on rear.)

DOOR STYLES

3/4 Solid hardwood doors
 5/4 Solid hardwood drawer fronts
 (Available in maple, oak and cherry.)



CRP-10

CRP-20

CRP-30

RGC CRP-10

*FLUSH
BATTEN

STAINS

- * 9 Stains available along with 3 paint colors (12 total.)

Natural
 Surf
 Goldenrod
 Wheat
 Patriot
 Colonial Cherry
 King's Pride
 Roseberry
 Cherry Blossom
 Glacier White (Paint)-Premium
 Bisque (Paint)-Premium
 Almond (Paint)-Premium

The Imperial cabinets are supplied with a wide range of standard and premium hardware.

***ADDITIONAL CHARGES APPLY FOR DOUBLE DOOR UNITS**

The Imperial Line

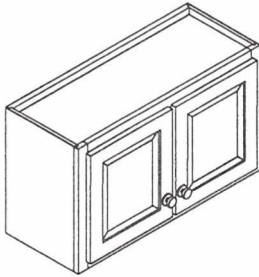
By WOODMASTERS

Cabinetry

Brought to you by

Dale Wolfe Custom Kitchens & Baths

STANDARD WALL CABINETS

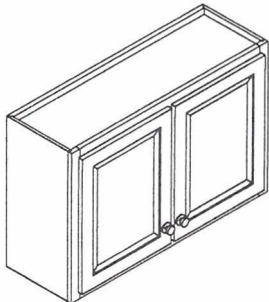


12" HIGH
W3012
W3312
W3612
W3912

15" HIGH
W3015
W3315
W3615
W3915

15" HIGH
24" DEEP
W331524
W361524
W391524

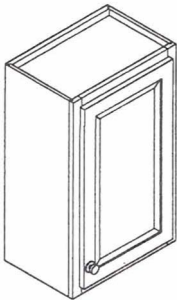
18" HIGH
(1 SHELF)
W3018
W3318
W3618
W3918



21" HIGH (1 SHELF)
W2721 W3921
W3021 W4221
W3321 W4521
W3621 W4821

21" HIGH
24" DEEP
(1 SHELF)
W332124
W362124

24" HIGH (1 SHELF)
W2724 W3924
W3024 W4224
W3324 W4524
W3624 W4824

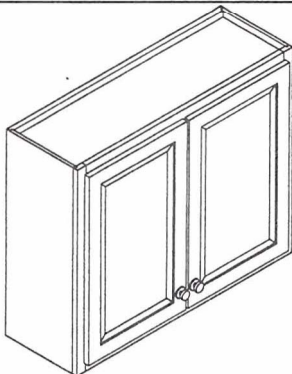


21" HIGH
(1 SHELF)
W2421

30 1/2" HIGH
(2 SHELVES)
W1230
W13.530
W1530
W16.530
W1830
W19.530
W2130
W22.530
W2430

36" HIGH
(2 SHELVES)
W1236
W13.530
W1536
W16.530
W1836
W19.530
W2136
W22.530
W2436

42" HIGH
(3 SHELVES)
W1242
W13.530
W1542
W16.530
W1842
W19.530
W2142
W22.530
W2442



27" HIGH
(1 SHELF)
W3027
W3327
W3627

30 1/2" HIGH
(2 SHELVES)
W2730
W3030
W3330
W3630
W3930
W4230
W4530
W4830

36" HIGH
(2 SHELVES)
W2736
W3036
W3336
W3636
W3936
W4236
W4536
W4836

42" HIGH
(3 SHELVES)
W2742
W3042
W3342
W3642
W3942
W4242
W4542
W4842

The Imperial Line

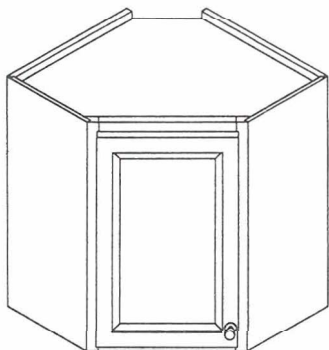
By **WOODMASTERS**

Brought to you by

Cabinetry

Dale Wolfe Custom Kitchens & Baths

DIAGONAL CORNER WALL CABINETS



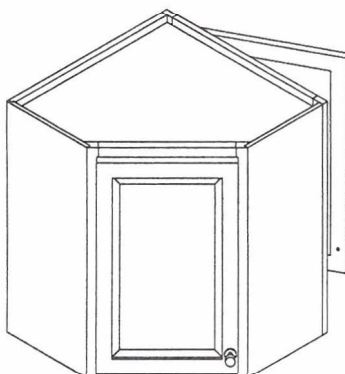
WALL CORNER CABINETS

ADJUSTABLE SHELVES

2 SHELVES	WC2430
2 SHELVES	WC2436
3 SHELVES	WC2442

REVOLVING SHELVES

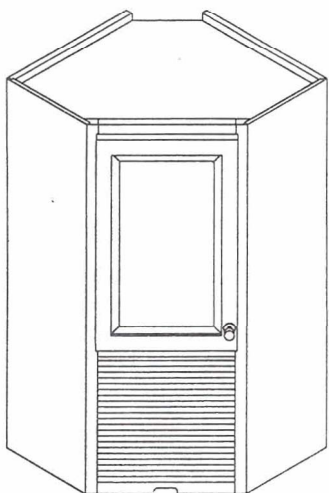
2 SHELVES	WCR2430
2 SHELVES	WCR2436
3 SHELVES	WCR2442



WALL CORNER PENINSULA CABINETS

ADJUSTABLE SHELVES ONLY

2 SHELVES	WCP2430
2 SHELVES	WCP2436
3 SHELVES	WCP2442



WALL CORNER TAMBOUR DOOR STORAGE CABINETS

ADJUSTABLE SHELVES

2 SHELVES	WCTDS2448
2 SHELVES	WCTDS2454
3 SHELVES	WCTDS2460

REVOLVING SHELVES

2 SHELVES	WCRTDS2448
2 SHELVES	WCRTDS2454
3 SHELVES	WCRTDS2460

The Imperial Line

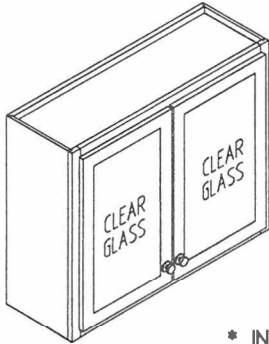
By **WOODMASTERS**

Cabinetry

Brought to you by

Dale Wolfe Custom Kitchens & Baths

WALL CABINETS W/ GLASS

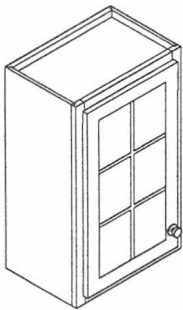


CLEAR
GLASS

W3030CG
W3630CG
W3036CG
W3636CG
W3042CG
W3642CG

WC2430CG
WC2436CG
WC2442CG
WCTDS2448CG
WCTDS2454CG
WCTDS2460CG

* INTERIORS STAINED TO MATCH EXTERIORS.



WOOD MULLION GLASS

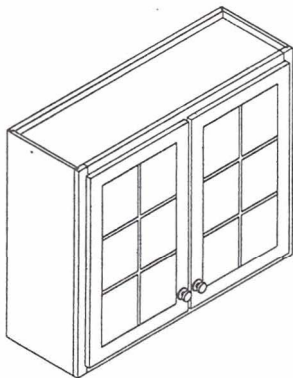
W1230WMG
W1530WMG
W1830WMG
W2130WMG
W2430WMG

W1236WMG
W1536WMG
W1836WMG
W2136WMG
W2436WMG

W1242WMG
W1542WMG
W1842WMG
W2142WMG
W2442WMG

WC2430WMG
WC2436WMG
WC2442WMG
WCTDS2448WMG
WCTDS2454WMG
WCTDS2460WMG

* INTERIORS STAINED TO MATCH EXTERIORS.



WOOD MULLION GLASS

W2730WMG
W3030WMG
W3330WMG
W3630WMG
W3930WMG
W4230WMG
W4530WMG
W4830WMG

W2736WMG
W3036WMG
W3336WMG
W3636WMG
W3936WMG
W4236WMG
W4536WMG
W4836WMG

W2742WMG
W3042WMG
W3342WMG
W3642WMG
W3942WMG
W4242WMG
W4542WMG
W4842WMG

* INTERIORS STAINED TO MATCH EXTERIORS.

The Imperial Line

By **WOODMASTERS**

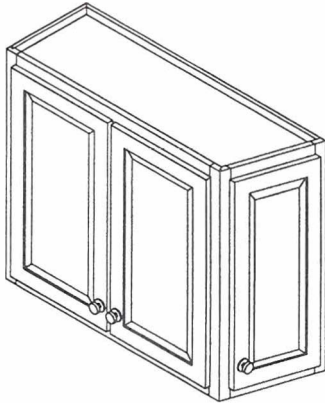
Cabinetry

Brought to you by

Dale Wolfe Custom Kitchens & Baths

SPECIAL WALL CABINETS

WALL ANGLE CABINETS



(2 SHELVES)

WAC2430-L/R
WAC2730-L/R
WAC3030-L/R
WAC3330-L/R
WAC3630-L/R
WAC3930-L/R
WAC4230-L/R
WAC4530-L/R
WAC4830-L/R

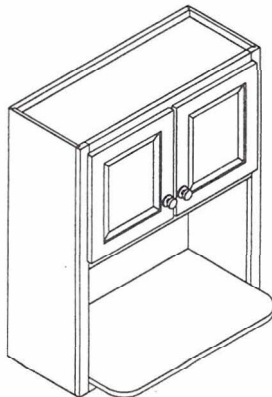
(2 SHELVES)

WAC2436-L/R
WAC2736-L/R
WAC3036-L/R
WAC3336-L/R
WAC3636-L/R
WAC3936-L/R
WAC4236-L/R
WAC4536-L/R
WAC4836-L/R

(3 SHELVES)

WAC2442-L/R
WAC2742-L/R
WAC3042-L/R
WAC3342-L/R
WAC3642-L/R
WAC3942-L/R
WAC4242-L/R
WAC4542-L/R
WAC4842-L/R

- * WAC24-WAC27 WILL HAVE 2 DOORS TOTAL
- * WAC30-WAC48 WILL HAVE 3 DOORS TOTAL (SHOWN)
- * WAC3630-R SHOWN



MICROWAVE CABINETS

36" HIGH (NO SHELF)

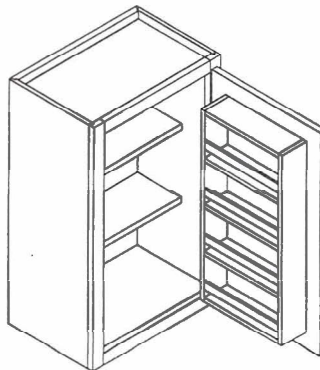
MWW2736ES
MWW3036ES

42" HIGH (1 SHELF)

MWW2742ES
MWW3042ES

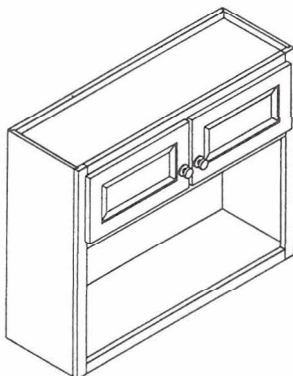
48" HIGH (1 SHELF)

MWW2748ES
MWW3048ES



SPICE RACK ON DOOR

W1530SROD
W1830SROD
W2130SROD
W2430SROD



OPEN BOOKSHELF WALL CABINETS

30 1/2" HIGH (NO SHELF)

OBSW3030
OBSW3330
OBSW3630

36" HIGH (NO SHELF)

OBSW3036
OBSW3336
OBSW3636

42" HIGH (1 SHELF)

OBSW3042
OBSW3342
OBSW3642

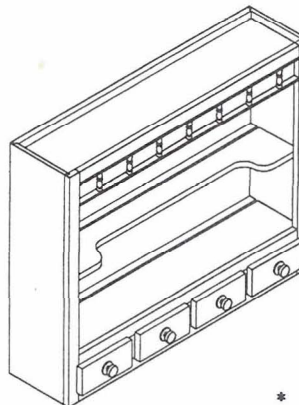


PLATE CABINETS

PC3030
PC3330
PC3630

* PLATE CABINETS ARE 9" DEEP

The Imperial Line

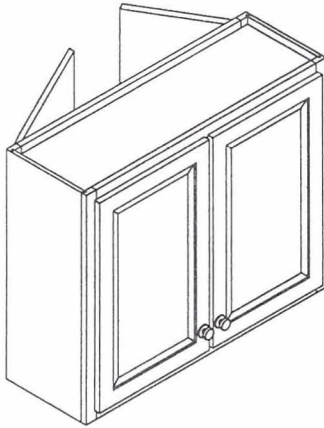
By **WOODMASTERS**

Cabinetry

Brought to you by

Dale Wolfe Custom Kitchens & Baths

SPECIAL WALL CABINETS



DOUBLE ENTRY WALL CABINETS

21" HIGH
(1 SHELF)

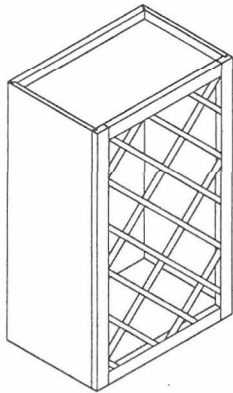
DEW2721
DEW3021
DEW3321
DEW3621
DEW3921
DEW4221
DEW4521
DEW4821

24" HIGH
(1 SHELF)

DEW2724
DEW3024
DEW3324
DEW3624
DEW3924
DEW4224
DEW4524
DEW4824

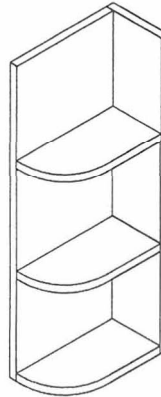
30 1/2" HIGH
(2 SHELVES)

DEW2730
DEW3030
DEW3330
DEW3630
DEW3930
DEW4230
DEW4530
DEW4830



WALL WINE RACK CABINETS

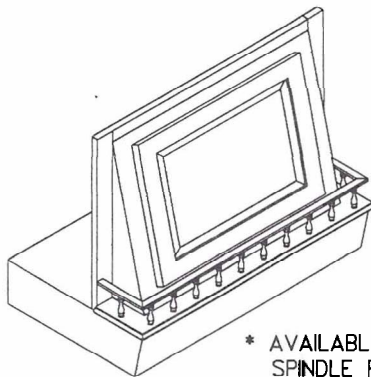
WWRC1530
WWRC1830
WWRC2130
WWRC2430



WALL END SHELVES

WES630L
WES630R
WES636L
WES636R
WES642L
WES642R

* WES630R SHOWN

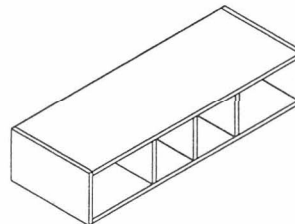


WOOD HOODS

PLAIN FRONT
WHPP30

RAISED PANEL
WHRP30

* AVAILABLE WITH OR WITHOUT
SPINDLE RAIL - PLEASE SPECIFY
* WHRP30 W/ SPINDLE RAIL SHOWN.



PIGEON HOLES

PH24
PH30
PH36

The Imperial Line

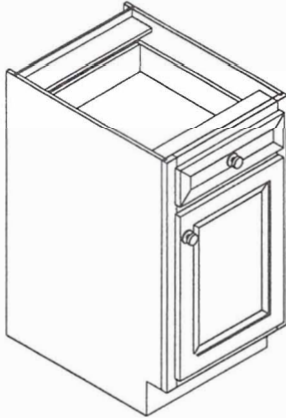
By **WOODMASTERS**

Cabinetry

Brought to you by

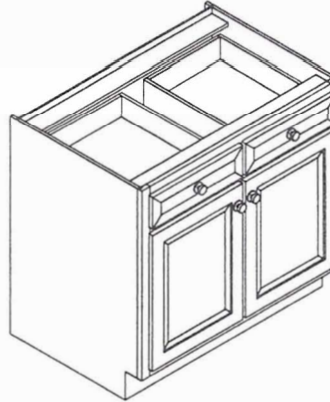
Dale Wolfe Custom Kitchens & Baths

STANDARD BASE CABINETS



STANDARD BASE CABINETS

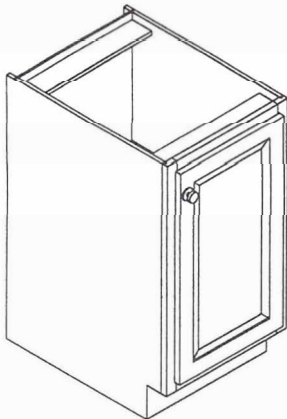
B12
B13.5
B15
B16.5
B18
B19.5
B21
B22.5
B24



STANDARD BASE CABINETS

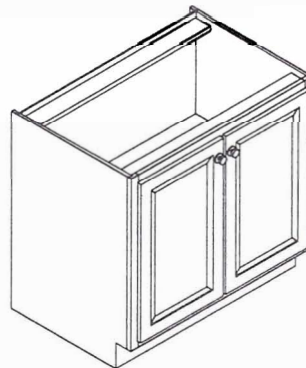
B27
B30
B33
B36
B39
B42
B45
B48

* B27 & B30 WILL HAVE 1 LONG DRAWER HEAD



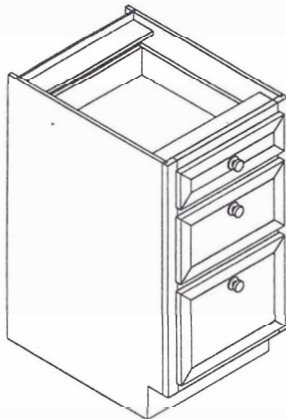
BASE FULL DOOR CABINETS

12" DEEP	24" DEEP
12BFD12	BFD12
12BFD15	BFD15
12BFD18	BFD18
12BFD21	BFD21
12BFD24	BFD24



BASE FULL DOOR CABINETS

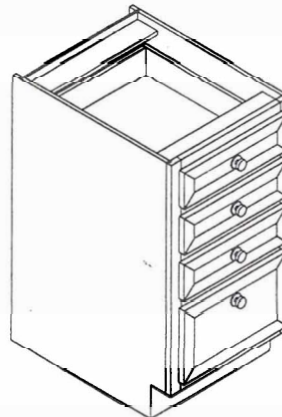
12" DEEP	24" DEEP
12BFD27	BFD27
12BFD30	BFD30
12BFD33	BFD33
12BFD36	BFD36
12BFD39	BFD39
12BFD42	BFD42
12BFD45	BFD45
12BFD48	BFD48



3 DRAWER BASE CABINETS

3DRB12
3DRB15
3DRB18
3DRB21
3DRB24
3DRB27
3DRB30
3DRB36

*(F.E.G.) FULL EXTENSION
GLIDES AVAILABLE
AT ADDITIONAL COSTS



4 DRAWER BASE CABINETS

4DRB12
4DRB15
4DRB18
4DRB21
4DRB24
4DRB30

*(F.E.G.) FULL EXTENSION
GLIDES AVAILABLE
AT ADDITIONAL COSTS

The Imperial Line

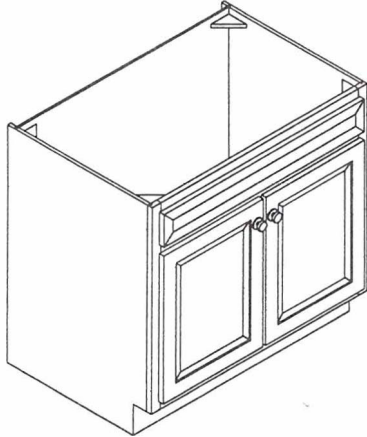
By **WOODMASTERS**

Cabinetry

Brought to you by

Dale Wolfe Custom Kitchens & Baths

SPECIAL BASE CABINETS



SINK BASE CABINETS

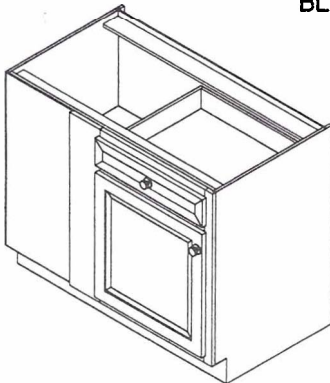
W/ TILT-OUT SOAP TRAY

SBDD18
SBDD21
SBDD24
SBDD27
SBDD30
SBDD33
SBDD36
SBDD39
SBDD42
SBDD45
SBDD48

SBDD18ST
SBDD21ST
SBDD24ST
SBDD27ST
SBDD30ST
SBDD33ST
SBDD36ST
SBDD39ST
SBDD42ST
SBDD45ST
SBDD48ST

- * SBDD18-SBDD24 WILL HAVE 1 DOOR AND 1 SINK GRILLE
- * SBDD27-SBDD36 WILL HAVE 2 DOORS AND 1 SINK GRILLE (SHOWN)
- * SBDD39-SBDD48 WILL HAVE 2 DOORS AND 2 SINK GRILLES

BLIND CORNER CABINETS

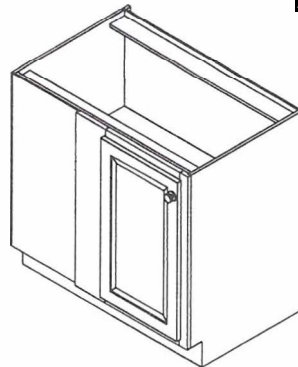


USABLE FACE

BCB36L 18"
BCB36R 18"
BCB39L 21"
BCB39R 21"
BCB42L 24"
BCB42R 24"
BCB45L 27"
BCB45R 27"

* BCB42L SHOWN

BLIND CORNER CABINETS

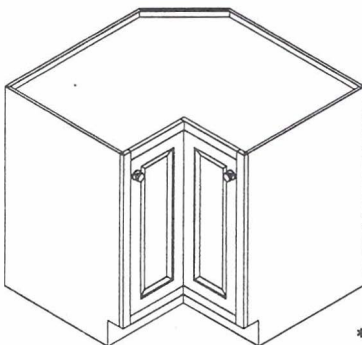


USABLE FACE

BCBFD30L 15"
BCBFD30R 15"
BCBFD36L 18"
BCBFD36R 18"

* BCBFD36L SHOWN

BASE CORNER CABINETS

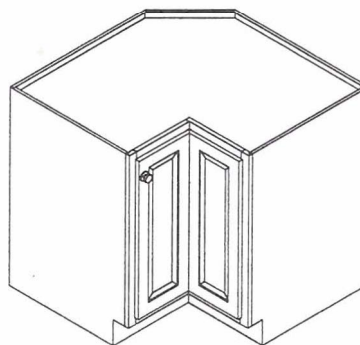


REVOLVING SHELVES

BPC36

* (2) REVOLVING SHELVES ATTACHED TO BACK OF DOOR

BASE CORNER CABINETS



ADJUSTABLE SHELF

XBPC33
XBPC36
XBPC39

ADD REVOLVING SHELVES FOR AN ADDITIONAL COST. (EXAMPLE: XBPC36R)

* (1) ADJUSTABLE SHELF

The Imperial Line

By WOODMASTERS

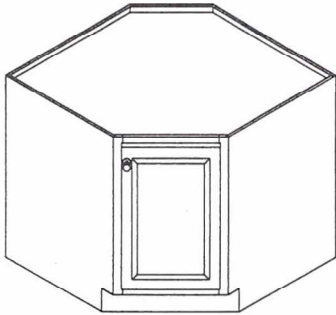
Cabinetry

Brought to you by

Dale Wolfe Custom Kitchens & Baths

SPECIAL BASE CABINETS

DIAGONAL CORNER BASE CABINETS



ADJUSTABLE SHELF

C/CFD33
C/CFD36
C/CFD39

* 1 ADJUSTABLE SHELF

REVOLVING SHELF

C/C36

* 2 PLASTIC REVOLVING SHELVES

REVOLVING SHELF

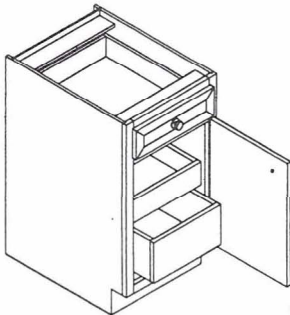
C/CSS36
C/CSS39
C/CSS42

2 WOOD REVOLVING SHELVES. (1) IS ON THE FLOOR. (1) IS ON AN ADJUSTABLE SHELF.

SINK BASE

C/CSBDD42

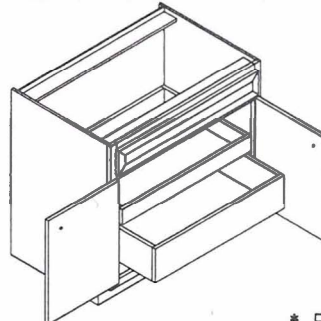
* SINK BASE HAS FALSE DRAWER FRONT ABOVE DOOR.



BASE W/ ROLL-OUT SHELVES

B18ROS B27ROS
B21ROS B30ROS
B24ROS B36ROS

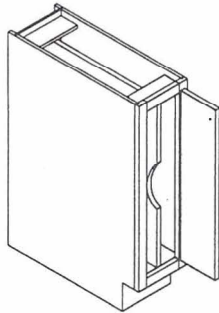
* TOP ROS IS 4" HIGH
* BOTTOM ROS IS 7" HIGH
* ROLL-OUTS ARE FULL WIDTH



RANGE BASE W/ ROLL-OUT SHELVES

RBDD30ROS
RBDD36ROS

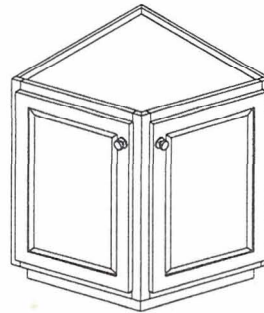
* TOP ROS IS 4" HIGH
* BOTTOM ROS IS 7" HIGH
* ROLL-OUTS ARE FULL WIDTH



TRAY BASES

TB9
TB12
TB15

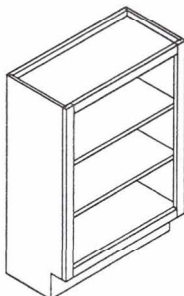
* FIXED TRAY DIVIDER



QUARTER BASE ANGLE CABINET

QBA24

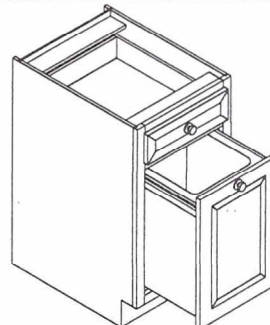
* 2 ADJUSTABLE SHELVES



OPEN SHELF CABINET

12BFD240SC

* 24" WIDE ... 12" DEEP



PULL-OUT TRASH BASE

POTB24

* (2) TRASH BINS

The Imperial Line

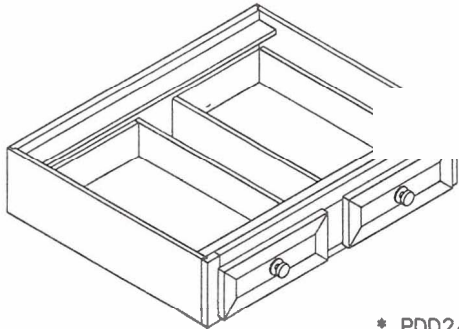
By WOODMASTERS

Cabinetry

Brought to you by

Dale Wolfe Custom Kitchens & Baths

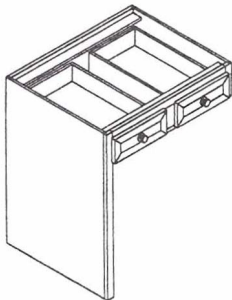
DESK CABINETS



PLANNING DESKS

18" DEEP	21" DEEP	24" DEEP
PDD2418	PDD2421	PDD2424
PDD3018	PDD3021	PDD3024
PDD3618	PDD3621	PDD3624

* PDD24 WILL HAVE 1 FULL-WIDTH DRAWER HEAD

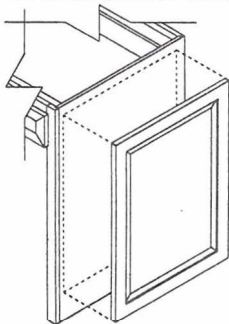


PLANNING DESKS W/ LEGS ATTACHED

18" DEEP	24" DEEP
PDD2418LAL/R30/34.5	PDD2424LAL/R30/34.5
PDD3018LAL/R30/34.5	PDD3024LAL/R30/34.5
PDD3618LAL/R30/34.5	PDD3624LAL/R30/34.5
21" DEEP	
PDD2421LAL/R30/34.5	
PDD3021LAL/R30/34.5	
PDD3621LAL/R30/34.5	

LEGS ATTACHED BOTH SIDES
PDD3624LALR30/34.5

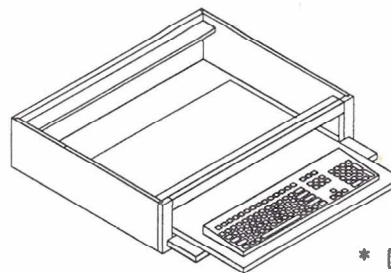
* PDD3024LAL34.5 SHOWN
* PDD24 WILL HAVE 1 FULL-WIDTH DRAWER HEAD



RAISED PANEL END ON CABINETS

* SEE PG. 16 FOR SIZES

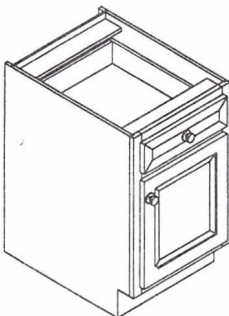
* RAISED PANEL END ON DESK LEG SHOWN



PULL-OUT KEYBOARD TRAY

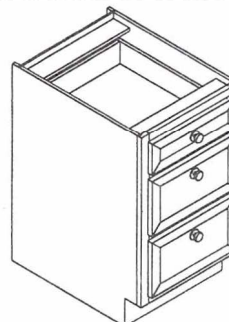
POKT

* Drawer Head Tilts Down & Tray Pulls Out



PLANNING DESK BASES

PDB1524
PDB1824
PDB2124
PDB2424



PLANNING DESK DRAWER BASES

PD3DRB1524
PD3DRB1824
PD3DRB2124
PD3DRB2424

The Imperial Line

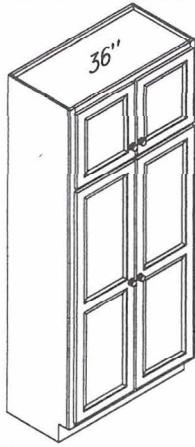
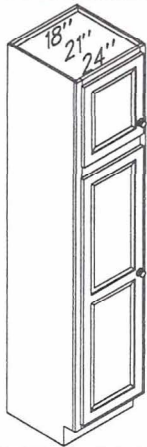
By WOODMASTERS

Cabinetry

Brought to you by

Dale Wolfe Custom Kitchens & Baths

TALLER CABINETS



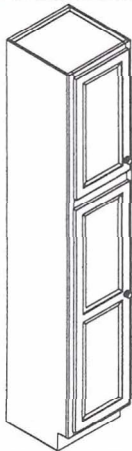
84" HIGH
12" DEEP
NO SHELVES
12BT1884
12BT2184
12BT2484
12BT3684
4 ADJ. SHELVES
12LT1884
12LT2184
12LT2484
12LT3684

18" DEEP
4 ADJ. SHELVES
18LT1884
18LT2184
18LT2484
18LT3684

21" DEEP
4 ADJ. SHELVES
21LT1884
21LT2184
21LT2484
21LT3684

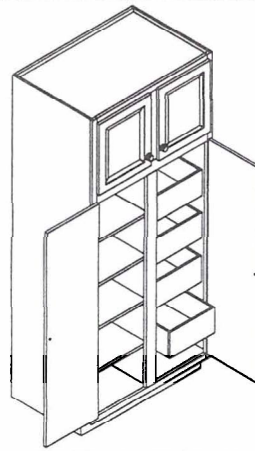
24" DEEP
NO SHELVES
24BT1884
24BT2184
24BT2484
24BT3684
4 ADJ. SHELVES
24LT1884
24LT2184
24LT2484
24LT3684
4 ROLL-OUT SHELVES
24TROC1884
24TROC2184
24TROC2484
8 ROLL-OUT SHELVES
24TROC3684

* ROLL-OUTS WILL BE 7" HIGH



90" HIGH
5 ADJ. SHELVES
24LT1890
24LT2190
24LT2490
24LT3690
96" HIGH
5 ADJ. SHELVES
24LT1896
24LT2196
24LT2496
24LT3696

* 1 ADJ. SHELF IN UPPER SECTION
4 ADJ. SHELVES IN LOWER SECTION

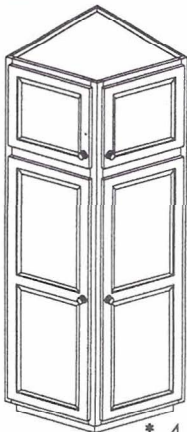


TALL PANTRY CABINET

LEFT: 4 ADJ. SHELVES
RIGHT: 4 ROLL-OUTS
24TLROC3684-4A/4R
* SHOWN

LEFT: 4 ROLL-OUTS
RIGHT: 4 ADJ. SHELVES
24TROL3684-4R/4A

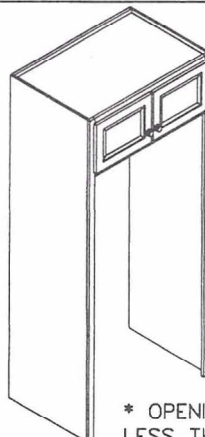
* ROLL-OUTS WILL BE 7" HIGH



QUARTER TALL ANGLE CABINET

24QTA2484
24QTA2490
24QTA2496

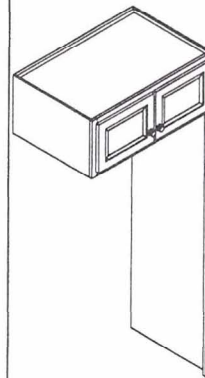
* 4 ADJUSTABLE SHELVES



REFRIGERATOR CABINET W/ 2 LEGS ATTACHED

BRT3684
BRT3984
BRT4284
BRT3690
BRT3990
BRT4290
BRT3696
BRT3996
BRT4296

* OPENING WIDTH IS 3" LESS THAN CABINET WIDTH



REFRIGERATOR CABINET W/ 1 LEG ATTACHED

BRTL/R368424
BRTL/R398424
BRTL/R369024
BRTL/R399024
BRTL/R369624
BRTL/R399624

* OPENING WIDTH IS 1 1/2" LESS THAN CABINET WIDTH

* BRTR368424 SHOWN

The Imperial Line

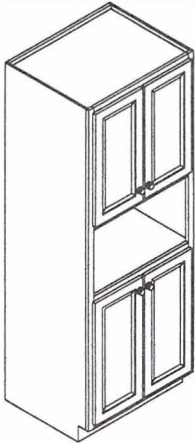
By **WOODMASTERS**

Brought to you by

Cabinetry

Dale Wolfe Custom Kitchens & Baths

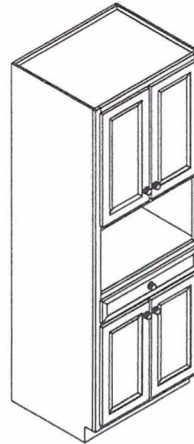
TALLER OVEN CABINETS



TALLER MICROWAVE
CABINET

TMWC3084
TMWC3384
TMWC3684

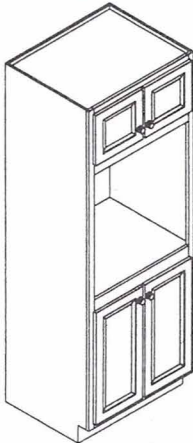
AVAILABLE
90" & 96"
High.



TALLER MICROWAVE
CABINET W/ DRAWER

TMWC3084D
TMWC3384D
TMWC3684D

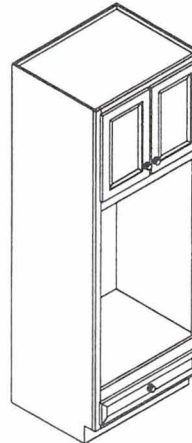
AVAILABLE
90" & 96"
High.



TALLER SINGLE
OVEN CABINET

TSOC2484A
TSOC2484B
TSOC2784
TSOC3084
TSOC3384

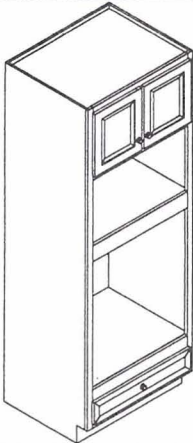
AVAILABLE
90" & 96"
High.



TALLER DOUBLE
OVEN CABINET

TDOC2484A
TDOC2484B
TDOC2484C
TDOC2784A
TDOC2748B
TDOC2784C
TDOC3084A
TDOC3084B

AVAILABLE
90" & 96"
High.



TALLER SINGLE OVEN CABINET W/ MICROWAVE OPENING

TMOC2484
TMOC2784
TMOC3084
TMOC3384

AVAILABLE
90" & 96"
High.

The Imperial Line

By **WOODMASTERS**

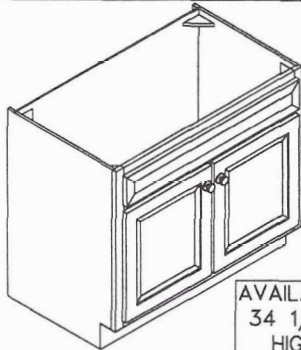
Cabinetry

Brought to you by

Dale Wolfe Custom Kitchens & Baths

VANITY CABINETS

VANITY SINK BASE CABINETS



AVAILABLE
34 1/2"
HIGH

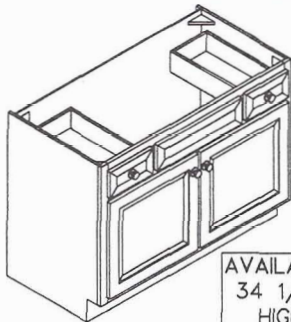
18" DEEP

VSBD1818 VSBD3318
VSBD2118 VSBD3618
VSBD2418 VSBD3918
XVSBD2418 VSBD4218
VSBD2718 VSBD4518
VSBD3018 VSBD4818

21" DEEP

VSBD1821 VSBD3321
VSBD2121 VSBD3621
VSBD2421 VSBD3921
XVSBD2421 VSBD4221
VSBD2721 VSBD4521
VSBD3021 VSBD4821

- * VSBD18-VSBD24 WILL HAVE 1 DOOR AND 1 SINK GRILLE
- * XVSBD24, VSBD27-VSBD36 WILL HAVE 2 DOORS AND 1 SINK GRILLE (SHOWN)
- * VSBD39-VSBD48 WILL HAVE 2 DOORS AND 1 SINK GRILLE



AVAILABLE
34 1/2"
HIGH

VANITY SINK BASE CABINETS W/ POCKET DRAWERS

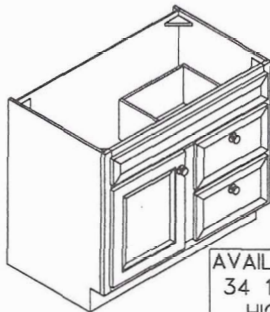
18" DEEP

SVSBDD3918
SVSBDD4218
SVSBDD4518
SVSBDD4818

21" DEEP

SVSBDD3921
SVSBDD4221
SVSBDD4521
SVSBDD4821

- * 2 WORKING DRAWERS



AVAILABLE
34 1/2"
HIGH

COMBINATION DRAWER/VANITY SINK BASE CABINETS

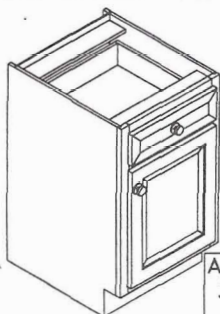
18" DEEP

CDVSB2418-L/R
CDVSB3018-L/R
CDVSB3318-L/R
CDVSB3618-L/R
CDVSB4218-L/R
CDVSB4818-L/R

21" DEEP

CDVSB2421-L/R
CDVSB3021-L/R
CDVSB3321-L/R
CDVSB3621-L/R
CDVSB4221-L/R
CDVSB4821-L/R

- * CDVSB3621-R SHOWN
- * 2 WORKING DRAWERS
- * CDVSB42 WILL HAVE 2 SINK GRILLES



AVAILABLE
34 1/2"
HIGH

VANITY BASE CABINETS

18" DEEP 21" DEEP

VB1218 VB1221
VB1518 VB1521
VB1818 VB1821
VB2118 VB2121
VB2418 VB2421



AVAILABLE
34 1/2"
HIGH

VANITY DRAWER BASE CABINETS

18" DEEP 21" DEEP

V3DRB1218 V3DRB1221
V3DRB1518 V3DRB1521
V3DRB1818 V3DRB1821
V3DRB2118 V3DRB2121
V3DRB2418 V3DRB2421

The Imperial Line

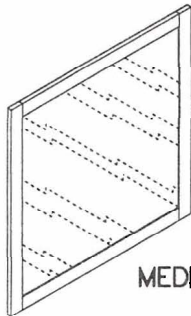
By **WOODMASTERS**

Cabinetry

Brought to you by

Dale Wolfe Custom Kitchens & Baths

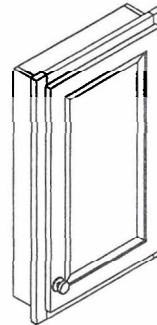
VANITY ACCESSORIES



FRAMED MIRRORS

FM24
FM30
FM36
FM42
FM48

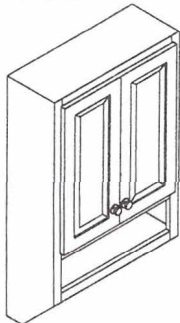
MEDICINE CABINETS



MEDICINE CABINETS

STD DOOR	MIRROR DOOR
SSMC1630	SSMCM1630
RMC1830	RMCM1830
RMC2430	RMCM2430

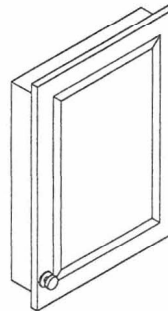
* 4 ADJ. SHELVES
* SSMC UNITS WILL FIT IN STANDARD 14 1/2" STUD SPACE



TOILET TOPPER CABINET

TT2440

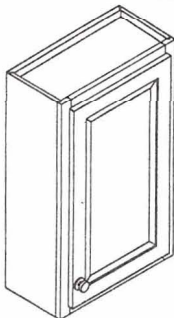
* 2 ADJ. SHELVES
* TOWEL BAR NOT SEEN



MEDICINE CABINETS

DWMCD17.5X24.5
(RAISED PANEL DOOR)

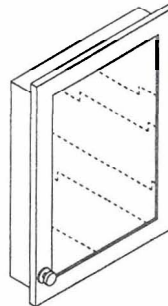
* Door Attached To An Enamel Coated Metal Box



VANITY WALL CABINETS

VW1230
VW1530
VW1830
VW2130
VW2430

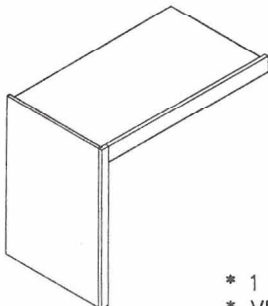
* 9" DEEP
* 2 ADJUSTABLE SHELVES



MEDICINE CABINETS

DWMCDM17.5X24.5
(MIRROR IN DOOR)

* Door Attached To An Enamel Coated Metal Box



VANITY END PANELS W/ APRON BOARD ATTACHED

VEPAA2421L/R
VEPAA3021L/R
VEPAA3621L/R

* 1 1/2" STILE / 3" APRON BOARD
* VEPAA3621R SHOWN

The Imperial Line

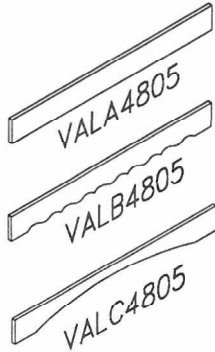
By **WOODMASTERS**

Brought to you by

Cabinetry

Dale Wolfe Custom Kitchens & Baths

MOULDINGS & ACCESSORIES



STYLE 'A'
VALA4805
VALA9605

STYLE 'E'
VALE3605
VALE4205
VALE4805
VALE9605

VALANCE BOARDS

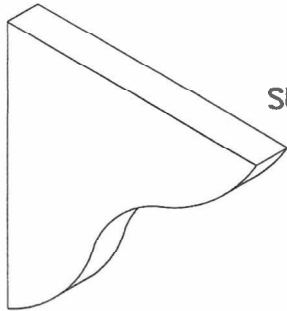
STYLE 'B'

VALB3005 VALB6605
VALB3605 VALB7205
VALB4205 VALB7805
VALB4805 VALB8405
VALB5405 VALB9005
VALB6005 VALB9605

STYLE 'C'

VALC3005 VALC6605
VALC3605 VALC7205
VALC4205 VALC7805
VALC4805 VALC8405
VALC5405 VALC9005
VALC6005 VALC9605

* 5" HIGH STANDARD - AVAILABLE 9" HIGH ALSO



WALL SHELF
SUPPORT BRACKETS

WSS9
WSS12
WSS15

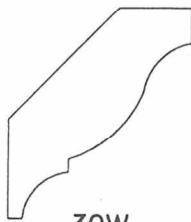


POSTS

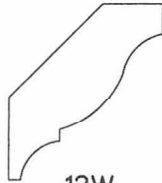
2" X 2" X 18"
POST218
2" X 2" X 30"
POST230
3" X 3" X 36"
POST336
3" X 3" X 48"
POST348



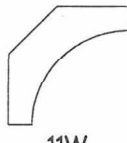
TOE



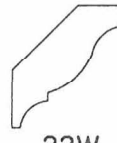
30W



12W



11W



22W



10W



9W



32W



CTM-B2



SR



13W



14W



15W

MOULDINGS

9W 3/4" OUTSIDE CORNER
10W 3/4" COVE
11W 1 1/2" COVE
12W LARGE CROWN
13W 1 1/4" BATTEN
14W 1 1/4" SCRIBE
15W PLATE RAIL
22W 1 1/4" CROWN
30W TWEENER CROWN
32W EXTRA SMALL CROWN
CTM-B2 COUNTERTOP MOULDING
SR SPINDLE RAIL
TOE 1/4" X 4" MATCHING TOEKICK

The Imperial Line

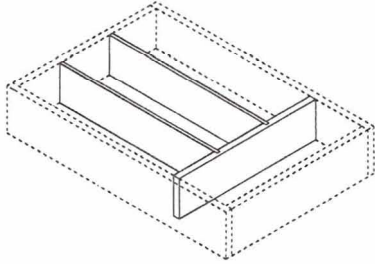
By WOODMASTERS

Cabinetry

Brought to you by

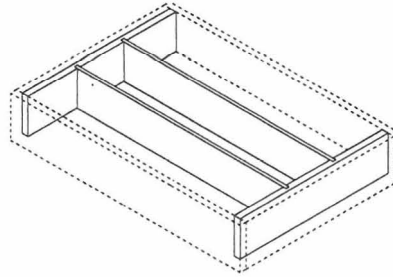
Dale Wolfe Custom Kitchens & Baths

GENERAL ACCESSORIES



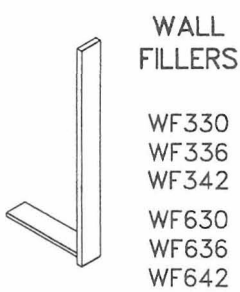
CUTLERY
DIVIDER

CD15
CD18
CD21



CUTLERY DIVIDER
(FULL DEPTH)

CDFD15
CDFD18
CDFD21



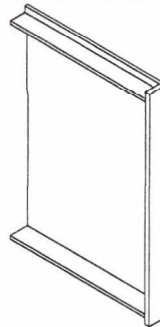
WALL
FILLERS

WF330
WF336
WF342
WF630
WF636
WF642



WALL FILLERS
W/ RETURN

WFR330
WFR336
WFR342



BASE FILLER
W/ RETURN

BFR3



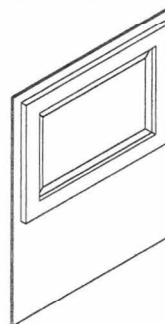
TALL
FILLERS

TF384
TF684



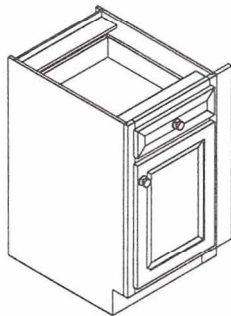
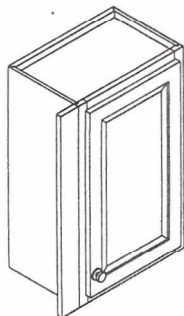
TALL FILLER
W/ RETURN

TFR384



UNIVERSAL
DISHWASHER
PANEL

UDWP



EXTENDED STILES

ESL 3" EXTENDED STILE LEFT
ESR 3" EXTENDED STILE RIGHT

* ESL SHOWN ON WALL CABINET (LEFT DRAWING)
* ESR SHOWN ON BASE CABINET (RIGHT DRAWING)

The Imperial Line

By **WOODMASTERS**

Brought to you by

Cabinetry

Dale Wolfe Custom Kitchens & Baths

GENERAL ACCESSORIES

veneered panels

VPQ43	1/4" X 48" X 36" PANEL
VPQ48	1/4" X 48" X 96" PANEL
VPQ83	1/4" X 96" X 36" PANEL
VPH48	1/2" X 48" X 96" PANEL
VPT43	3/4" X 48" X 36" PANEL
VPT48	3/4" X 48" X 96" PANEL
VPT83	3/4" X 96" X 36" PANEL

FRAME STOCK

4FS1.5	3/4" X 1 1/2" X 48" FRAME STOCK
8FS1.5	3/4" X 1 1/2" X 96" FRAME STOCK
4FS3	3/4" X 3" X 48" FRAME STOCK
8FS3	3/4" X 3" X 96" FRAME STOCK
4FS6	3/4" X 6" X 48" FRAME STOCK
8FS6	3/4" X 6" X 96" FRAME STOCK

SOFFIT BOARDS

SOF48	1/2" X 12" X 48" SOFFIT BOARD
SOF96	1/2" X 12" X 96" SOFFIT BOARD

LOOSE WALL DOORS

WDR9.5X18.5	WALL DOOR - 9 1/2" X 18 1/2"
WDR9.5X21.5	WALL DOOR - 9 1/2" X 21 1/2"
WDR9.5X28	WALL DOOR - 9 1/2" X 28"
WDR9.5X33.5	WALL DOOR - 9 1/2" X 33 1/2"
WDR9.5X39.5	WALL DOOR - 9 1/2" X 39 1/2"
WDR21.5X18.5	WALL DOOR - 21 1/2" X 18 1/2"

RAISED PANEL ENDS

* SEE PG. 9

LOOSE BASE DOORS

BDR9.5X21.5	BASE DOOR - 9 1/2" X 21 1/2"	BDR9.5X28	BASE DOOR - 9 1/2" X 28"
BDR12.5X21.5	BASE DOOR - 12 1/2" X 21 1/2"	BDR12.5X28	BASE DOOR - 12 1/2" X 28"
BDR15.5X21.5	BASE DOOR - 15 1/2" X 21 1/2"	BDR15.5X28	BASE DOOR - 15 1/2" X 28"
BDR18.5X21.5	BASE DOOR - 18 1/2" X 21 1/2"	BDR18.5X28	BASE DOOR - 18 1/2" X 28"
BDR21.5X21.5	BASE DOOR - 21 1/2" X 21 1/2"	BDR21.5X28	BASE DOOR - 21 1/2" X 28"
BDR21.5X24.5	BASE DOOR - 21 1/2" X 24 1/2"		

LOOSE TALLER DOOR

TDR21.5X56.5	TALLER DOOR - 21 1/2" X 56 1/2"
--------------	---------------------------------

TOUCH-UP KIT

TUK

TOUCH-UP KIT

MATCHING STAIN

AVAILABLE IN QUARTS AND GALLONS



DALE WOLFE
CUSTOM KITCHENS & BATHS, INC.
RR 1 Box 961 | Herndon, PA 17830
(570) 758. 1770 | Fax (570) 758. 1885

*Photos by: Marie Kohler Photography
42/04 MIP-2080*