

28. EOCENE TO PLEISTOCENE SILICOFLAGELLATES FROM THE NORWEGIAN-GREENLAND SEA (DSDP LEG 38)

Erlend Martini and Carla Müller, Geologisch-Paläontologisches Institut der Universität, Frankfurt am Main, Germany

INTRODUCTION

During Leg 38 of the Deep Sea Drilling Project, 17 sites (336 to 352) were occupied in the Norwegian-Greenland Sea (Figure 1). Material from most sites yielded silicoflagellates, although they were not represented at all sites. Intervals containing silicoflagellates include the middle Eocene to Quaternary. Unfortunately older sediments which, on the basis of silicoflagellates, may indicate direct correlation to diatomaceous deposits in the Paleocene/lower Eocene interval of the North Sea basin, especially Denmark and northern Germany, were not recovered during this cruise.

Since calcareous nannoplankton, which is commonly used for primary age determination, in these high latitudes is only present in sufficient numbers and diversified assemblages in a few horizons, and otherwise show rather meager assemblages with long-ranging species, the first age determinations are based mainly on silicoflagellates. Silicoflagellates proved to be the most important fossil group along with diatoms in this region. Although the worldwide distribution of most species and their tendency to develop regional "varieties" is still incompletely known, data from the Deep Sea Drilling Project material add a great deal to the understanding of the silicoflagellate distribution and evolution. Meanwhile, the first publication on the silicoflagellates of the Ehrenberg Collection has been published by Locker (1974), and it seems that quite a few commonly used silicoflagellate names have to be altered to avoid further confusion. In this paper, the Ehrenberg silicoflagellate types as illustrated by Locker (1974) are the basis for identification.

LOCALITIES AND ASSEMBLAGES RECOVERED

Geographical position of the DSDP holes drilled during Leg 38 are shown in Figure 1; and listed in Table 1 of Chapter 1 (this volume). With the exception of Sites 344, 347, 349, 351, and Holes 352 and 352A, silicoflagellates were generally encountered in certain intervals from the remaining holes. On the Iceland Plateau (Site 348) and Jan-Mayen Ridge (Sites 346 and 350) silicoflagellates were found only in the middle Miocene to Pliocene portions of the cored succession. In the Norway Basin (Site 337) silicoflagellates were encountered in the early Oligocene, whereas on the Iceland-Faeroe Ridge (Site 336) they are present only in the late Oligocene and lowest Miocene and on the Mohns Ridge (Site 345). They are present from the late Oligocene to the middle Miocene. Site 338 on the Outer Vøring Plateau yielded the best silicoflagellate succession

with assemblages from the upper Eocene to the upper Miocene. At Sites 339 and 340 on the Inner Vøring Plateau silicoflagellate assemblages from the late Eocene and early Oligocene were recovered. Miocene to Pliocene assemblages were found in the two remaining holes on the Vøring Plateau (Sites 341 and 342). The oldest silicoflagellate assemblages (early middle Eocene) were recovered at Site 343 in the Lofoten Basin.

Concurrent with the increase in the deposition of glacial material in the late Pliocene, a sudden occurrence of reworked late Paleogene and early Miocene silicoflagellates was noted at Sites 336 (Iceland-Faeroe Ridge), 339 and 341 (Vøring Plateau), and at Site 343 (Lofoten Basin). A summary of silicoflagellate zones identified in the present material is given in Figure 2.

SILICOFLAGELLATE ZONATION IN THE NORWEGIAN-GREENLAND SEA

The silicoflagellate zonation used in this report for the early Eocene to Middle Miocene interval is virtually the same as outlined in Martini (1971, 1972, 1974) with necessary correction in the upper Eocene (Figure 3). For the late Miocene to Quaternary interval, a combination of zones suggested by Ling (1973) and Bukry (1973) for North Pacific sediments is used. The zonation is summarized in Figure 3 together with correlations to the standard nannoplankton zonation (Martini, 1971), and includes the following zones:

Dictyocha transitoria Zone

Definition: Interval from the first to the last occurrence of *Dictyocha transitoria* Deflandre.

Author: Martini, 1974.

Common species: *Dictyocha transitoria* Deflandre, *Naviculopsis minor* (Schulz).

Remarks: Not recovered in the present material.

Naviculopsis minor Zone

Definition: Interval from the last occurrence of *Dictyocha transitoria* Deflandre to the first occurrence of *Corbisema bimucronata* Deflandre.

Author: Martini, 1974.

Common species: *Corbisema spinosa* Deflandre, *Corbisema apiculata* (Lemmermann), *Dictyocha rotundata* Jousé, *Distephanus quinquangellus* Bukry and Foster, *Naviculopsis foliacea* Deflandre, and *Naviculopsis minor* (Schulz).

Remarks: Present at Site 343, Cores 5 and 6.

Naviculopsis foliacea Zone

Definition: Interval from the first occurrence of *Corbisema bimucronata* Deflandre to the first occurrence of *Dictyocha quadria* (Mandra).

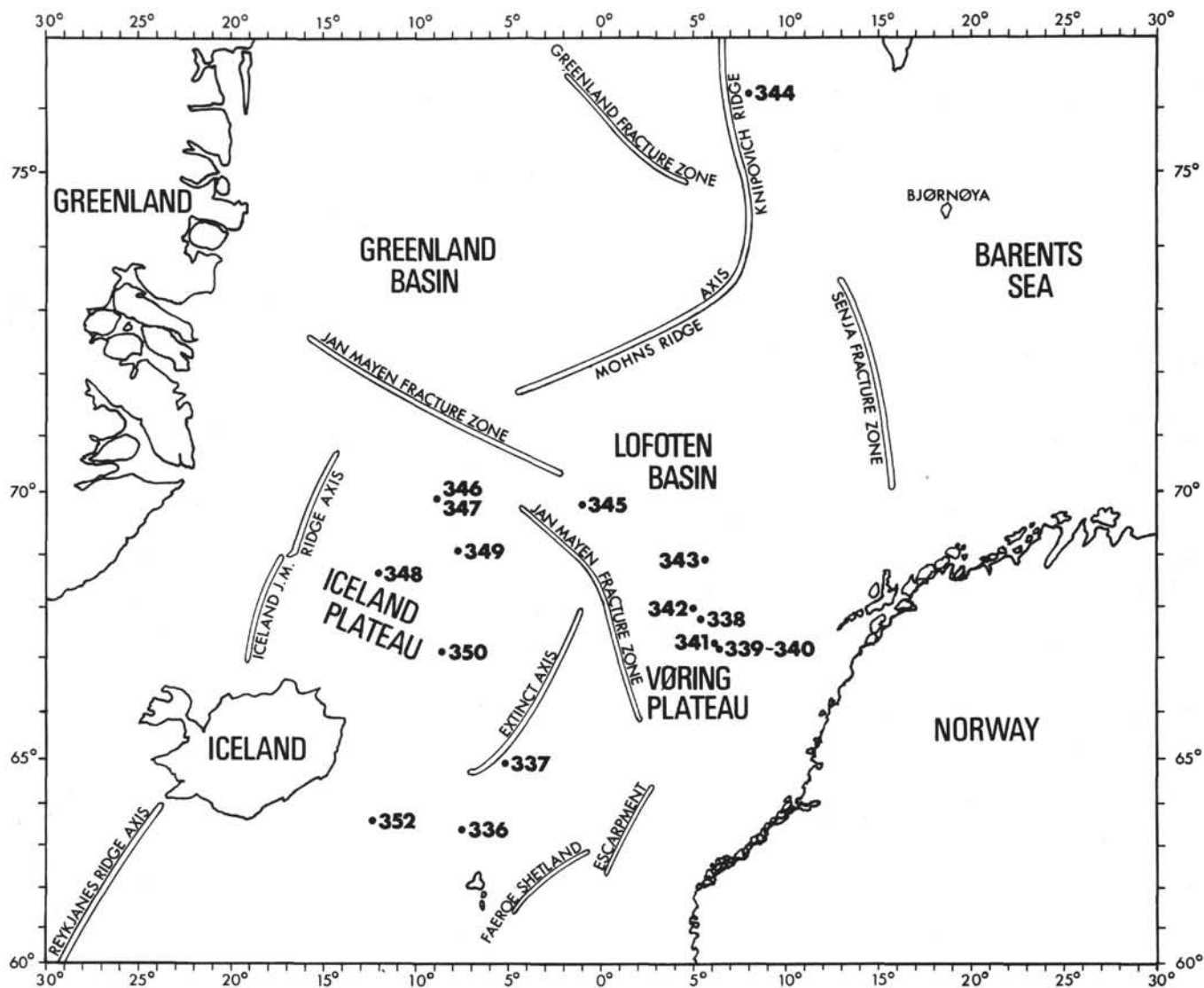


Figure 1. Sites occupied during Leg 38 in the Norwegian-Greenland Sea.

Author: Martini, 1971, emended this paper.

Common species: *Mesocena oamaruensis* Schulz, *Naviculopsis foliacea* Deflandre, *Distephanus quinquangellus* Bukry and Foster, *Corbisema spinosa* Deflandre, *Corbisema bimucronata* Deflandre, *Phyllodictyocha schulzii* Deflandre, *Corbisema apiculata* (Lemmermann).

Remarks: Probably recovered at Site 340, Samples 3, CC to 5, CC.

Corbisema bimucronata Zone

Definition: Interval from the first occurrence of *Dictyocha quadria* (Mandra) to the first occurrence of *Mesocena apiculata* (Schulz).

Author: Martini, 1974, emended this paper.

Common species: *Dictyocha quadria* (Mandra), *Corbisema apiculata* (Lemmermann), *Mesocena oamaruensis* Schulz, *Corbisema spinosa* Deflandre, *Naviculopsis ponticula* Perch-Nielsen, *Corbisema flexuosa* (Stradner), and *Corbisema bimucronata* Deflandre.

Remarks: In the present material, found at Site 338, Cores 27 to 29, and Site 340, Cores 1 to 3, 6 to 11.

Dictyocha quadria Zone

Definition: Interval from the first occurrence of *Mesocena apiculata* (Schulz) to the last occurrence of *Dictyocha quadria* (Mandra).

Authors: Martini and Müller, this paper.

Common species: *Dictyocha quadria* (Mandra), *Corbisema apiculata* (Lemmermann), *Corbisema spinosa* Deflandre, *Naviculopsis biapiculata* (Lemmermann), *Mesocena apiculata* (Schulz), *Dictyocha frenguelli* Deflandre.

Remarks: In the present material, found at Site 338, Core 26.

Naviculopsis biapiculata Zone

Definition: Interval from the last occurrence of *Dictyocha quadria* (Mandra) to the first occurrence of *Naviculopsis lata* (Deflandre).

Author: Martini, 1974, emended this paper.

Common species: *Naviculopsis biapiculata* (Lemmermann), *Mesocena apiculata* (Schulz), *Distephanus crux* (Ehrenberg), *Cannopilus hemisphaericus* (Ehrenberg).

TABLE 2
Silicoflagellates in Selected Samples from Site 339 Representing Part of the Early Oligocene and Part of the Glacial Interval

Sample (Interval in cm)	<i>Corbisema apiculata</i>	<i>Corbisema bimucronata</i>	<i>Corbisema flexuosa</i>	<i>Corbisema hastata</i>	<i>Corbisema spinosa</i>	<i>Corbisema triacantha</i>	<i>Dictyocha challengeri</i>	<i>Dictyocha cf. epidon</i>	<i>Dictyocha cf. fibula</i>	<i>Dictyocha frenguelli</i>	<i>Dictyocha hexacantha</i>	<i>Dictyocha quadria</i>	<i>Distephanus crux</i>	<i>Distephanus quinquangellus</i>	<i>Distephanus speculum</i>	<i>Mesocena apiculata</i>	<i>Mesocena circulus</i>	<i>Mesocena oamaruensis</i>	<i>Naviculopsis biapiculata</i>	<i>Naviculopsis constricta</i>	<i>Naviculopsis foliacea</i>	<i>Naviculopsis ponticula</i>	Diatom 340	<i>Micromarsupium</i> sp.	Silicoflagellate Zones	
6-3, 39-40	D	D	D	D		D	D	D	D		D	D	D	D	D	D	D	D	D	D	D	D	D	D		
7-2, 83-84	D	D				D	D	D	D		D	D				D					D	D	D		<i>D. speculum</i> Zone ?	
7-3, 61-62							D					D	D		D											
8-1, 20-21	D	D	D			D	D	D	D	D	D					D				D	D	D	D			
9, CC	X	X	X			X	X	X	X	X	X					X		X	cf.			X			<i>N. biapiculata</i> Zone	
10-1, 130-131	X	X				O		X	X	X	X				X		X	X					X			
10, CC	X	X	X		X	O	X	X	X	X	X				X		X	X								
11-1, 145-146	X	X	X			O	X	X	X	X	X				X		X	X	cf.				X			
11, CC	X	X	X			O	X	X	X	X	X				X		X	X					X			
12-3, 125-126	X	X	X			O	X	X	X	X	X				X		X	X					X			
12, CC	X	X	X			O	X	X	X	X	X				X		X	X					X			

Note: X = rare to few, O = common or dominant, D = displaced from older strata.

Remarks: In the present material, found at Site 337, Cores 9 to 12, Site 338, Cores 19 to 24, and Site 339, Cores 9 to 12.

Naviculopsis lata Zone

Definition: Interval from the first occurrence of *Naviculopsis lata* (Deflandre) to the first occurrence of *Naviculopsis navicula* (Ehrenberg).

Author: Martini, 1972.

Common species: *Naviculopsis lata* (Deflandre), *Distephanus crux* (Ehrenberg), *Mesocena apiculata* (Schulz), *Cannopilus hemisphaericus* (Ehrenberg), *Corbisema triacantha* (Ehrenberg), *Distephanus speculum* (Ehrenberg), *Naviculopsis iberica* Deflandre.

Remarks: In the present material, found at Site 336, Cores 15 and 16, Site 338, Cores 18 and 19, Site 342, Core 6, Site 345, Cores 9 and 10.

Naviculopsis navicula Zone

Definition: Interval from the first occurrence of *Naviculopsis navicula* (Ehrenberg) to the last occurrence of *Naviculopsis quadratum* (Ehrenberg) [syn. *N. rectangularis* (Schulz)].

Author: Martini, 1972.

Common species: *Naviculopsis navicula* (Ehrenberg), *Naviculopsis iberica* Deflandre, *Distephanus crux* (Ehrenberg), *Corbisema triacantha* (Ehrenberg), *Cannopilus hemisphaericus* (Ehrenberg), *Corbisema flexuosa* (Stradner), *Mesocena apiculata* (Schulz), and in the upper part *Naviculopsis quadratum* (Ehrenberg) [syn. *N. rectangularis* (Schulz)].

Remarks: In the present material, found at Site 338, Cores 12 to 17, Site 342, Core 6, and Site 345, Core 8.

Corbisema triacantha Zone

Definition: Interval from the last occurrence of *Naviculopsis quadratum* (Ehrenberg) to the last occurrence of *Corbisema triacantha* (Ehrenberg).

Author: Martini, 1971.

Common species: *Distephanus crux* (Ehrenberg), *Mesocena apiculata* (Schulz), *Distephanus speculum* (Ehrenberg), *Cannopilus hemisphaericus* (Ehrenberg), *Distephanus longispinus* (Schulz), *Corbisema triacantha* (Ehrenberg), and in the upper part *Mesocena diodon* (Ehrenberg).

Remarks: In the present material, found at Site 338, Cores 8 to 11, Site 342, Cores 3 to 5, Site 345, Cores 6 to 7(?), Site 346, Cores 5 and 6.

Mesocena circulus Zone

Definition: Interval from the last occurrence of *Corbisema triacantha* (Ehrenberg) to the last occurrence of *Mesocena circulus* (Ehrenberg).

Author: Ling, 1973, emended this paper.

Common species: *Mesocena circulus* Ehrenberg, *Mesocena diodon* Ehrenberg, *Cannopilus hemisphaericus* (Ehrenberg), *Dictyocha cf. epidon* Ehrenberg, *Distephanus speculum* (Ehrenberg), *Distephanus quinquangellus* Bukry and Foster, *Cannopilus ernestinae* Bachmann, and in the lower part *Mesocena apiculata* (Schulz), and *Distephanus longispinus* (Schulz).

Remarks: In the present material found at Site 338, Cores 7 and 8, Site 341, Cores 25 to 34, and Site 348, Cores 11 to 18.

Distephanus boliviensis Zone

Definition: Interval from the last occurrence of *Mesocena circulus* (Ehrenberg) to the last occurrence of *Distephanus boliviensis* (Frenguelli).

Author: Bukry and Foster, 1973, emended this paper.

Common species: *Distephanus speculum* (Ehrenberg), *Distephanus boliviensis* (Frenguelli), *Distephanus quinquangellus* Bukry and Foster, *Distephanus crux* (Ehrenberg), and in the lower part *Mesocena diodon* Ehrenberg.

	Silicoflagellate Zones	336	337	338	339	340	341	342	343	345	346	348
Quat.												
Plio.	<i>D. speculum</i> Zone	8-9 ?			*(6-8)	*(1)	*(4-7)		*(3)			5
	<i>D. boliviensis</i> Z.											6-10
Miocene	U.	<i>M. circulus</i> Zone			7-8		25-34					11-18
		<i>C. triacantha</i> Zone			8-11				3-5		6-7 ?	5-6
	L.	<i>N. navicula</i> Zone			12-17				6		8	
		<i>N. lata</i> Zone	15-16		18-19				6		9-10	
		<i>N. biapiculata</i> Z.		9-12	19-24	9-12						
Eocene	U.	<i>D. quadria</i> Zone			26							
		<i>C. bimucronata</i> Z.			27-29		8-11 1-3, 6-8					
	M.	<i>N. foliacea</i> Zone					3-5 ?					
		<i>N. minor</i> Zone								5-6		
		<i>D. transitoria</i> Z.										

Figure 2. *Silicoflagellate zones found in cores recovered in holes drilled during Leg 38. Brackets with star indicate reworked assemblages from the late Eocene to early Miocene redeposited during "glacial" time (probably in the *Distephanus speculum* Zone.*

Remarks: In the present material found at Site 348 Cores 6 to 10.

Distephanus speculum Zone

Definition: Interval from the last occurrence of *Distephanus boliviensis* (Frenguelli) to the first occurrence of *Distephanus octangulatus* Wailes.

Author: Bukry, 1975, emended this paper.

Common species: *Distephanus speculum* (Ehrenberg), *Distephanus octonarius* (Ehrenberg).

Remarks: In the present material found at Site 336, Cores 8, 9, Site 348, Core 5. Reworked silicoflagellates from the upper Eocene to lower Miocene, masking the autochthonous assemblage, are present at Site 339, Cores 6 to 8, Site 340, Core 1, Site 341, Cores 4 to 7, Site 343, Core 3, which may belong to the *Distephanus speculum* Zone.

The youngest sediments at the sites above the *Distephanus speculum* Zone were barren of silicoflagellates, and the high latitude species *Distephanus octangulatus* Wailes has not been found. The first occurrence of this species was used by Ling to define the late Pleistocene to recent *Distephanus octangulatus* Zone in the North Pacific. It is assumed that this zone is represented at Site 348 by unfossiliferous sediments (Cores 3 and 4) and by nannoplankton (Zone NN 21) bearing sediments in Cores 1 and 2.

Perch-Nielsen (in press) recently suggested two silicoflagellate zones in the Norwegian Sea based on a piston core (*Vema* 28/43) from the Vøring Plateau.

The *Naviculopsis vema* Zone (interval from the first to the last occurrence of *Naviculopsis vema* Perch-

Nielsen) and the *Naviculopsis ponticula* Zone (last occurrence of *Naviculopsis vema* Perch-Nielsen to the last occurrence of *Naviculopsis ponticula* Perch-Nielsen). The position of these zones in the zonation used on Leg 38 is not entirely known, as *Naviculopsis vema* was not encountered in the material recovered on the Vøring Plateau, and *Naviculopsis ponticula* seems to range probably from the *Naviculopsis foliacea* Zone to the higher part of the *Dictyochoa quadria* Zone, with a maximum in the *Corbisema bimucronata* Zone. However, in the assemblage present in her *Naviculopsis vema* Zone, Perch-Nielsen listed "*Septamesocena*" *apiculata* which has its first occurrence at the base of the *Dictyochoa quadria* zone, restricting the *Naviculopsis vema* Zone to a level within the *Dictyochoa quadria* Zone, which is, however, not in accordance with the occurrence of *Naviculopsis ponticula*.

CORRELATION TO THE NANNOPLANKTON ZONATION

Correlation of the present material to the standard nannoplankton zonation is rather restricted as only a few horizons contain datable nannoplankton assemblages (Müller, this volume). Correlations shown in Figure 3 are based on other previously published data. The following nannoplankton zones have been determined, and can be used for correlation of the silicoflagellate assemblages. The Recent to late Pleistocene zone (NN 21) is present in Cores 1 and 2 of Site 348 (0.0-18.5 m). Cores 3 and 4 are barren of calcareous nannoplankton and silicoflagellates. The latter first

appear in sufficient numbers in Core 5 (56.5-66.0 m) and can be attributed to the *Distephanus speculum* Zone.

The combined lower Miocene Zones NN 3/NN 4 are present in Cores 24 and 25 (341.5-378.5 m) from Site 348. The overlying Cores 19 to 23 are barren of nannoplankton and silicoflagellates. Core 18 (256.0-265.0 m) is attributed to the *Mesocena circulus* Zone on basis of the rare occurrence of *Mesocena circulus* in Sample 18, CC. However, the common occurrence of this particular species is in Core 14, some 66 meters above Sample 18, CC. Since *Corbisema triacantha* is rather rare near its upper limit, part of the interval from Cores 15 to 18 may belong to the *Corbisema triacantha* Zone.

Nannoplankton Zone NP 24 is present at Site 338, Sections 19-2 to 26-1 (187.5-248.0 m). Silicoflagellates found in these cores belong to the *Naviculopsis lata* Zone (Core 18 and 19), and *Naviculopsis biapiculata* Zone (Cores 19 to 24). Cores 25 and 26, Section 1 are barren of silicoflagellates. In Core 26, Section 2, silicoflagellates of the upper Eocene *Dictyocha quadria* Zone are present, indicating a hiatus between Section 26-1 and 26-2, which includes the lower Oligocene and uppermost Eocene.

The lowest silicoflagellate assemblage at Site 338 can be attributed to the *Corbisema bimucronata* Zone, and is present in Cores 27 to 29, CC (257.5-285.0 m). Cores 30 and 31 are barren of silicoflagellates and calcareous nannoplankton. In Core 32 (304.0-313.5 m), calcareous nannoplankton of the lower Eocene nannoplankton Zone NP 12 is present. Standard nannoplankton Zone NP 12 is also present at Site 343 (Core 8, 212.0-221.5 m) and below. The first silicoflagellate assemblage occurs above in Core 6 (193.0-202.5 m) and can be attributed to the *Naviculopsis minor* Zone.

All these data are in accordance with the correlation concept shown in Figure 3.

SITE SUMMARIES

Site 336 — Iceland-Faeroe Ridge

Cores 1 to 8 (upper part) are barren of silicoflagellates. From Sample 8-5, 100-101 cm to Sample 12-2, 100-101 cm only few specimens of *Distephanus speculum* are present, together with sponge spicules and some diatoms. In Sample 9-4, 50-51 cm, rare specimens of *Distephanus* cf. *octonarius* were found. These samples (72.0-135.0 m) are tentatively placed in the *Distephanus speculum* Zone. Cores 10 to 14 lack silicoflagellates.

From Sample 15-1, 13-14 cm to Sample 16-4, 101-102 cm (168.5 to 184.5 m), the following assemblage was found: *Corbisema triacantha*, *Distephanus crux*, *Distephanus speculum*, *Cannopilus hemisphaericus*, *Naviculopsis lata*, *Mesocena apiculata*, and *Rocella gemma*. This assemblage belongs to the *Naviculopsis lata* Zone, which includes the stratigraphic interval of the upper Oligocene and the lowermost Miocene. Samples 16-5, 111-112 cm to 18-3, 28-29 cm (184.5-202.5 m) show a decrease in silicoflagellate species, and may represent the *Naviculopsis lata* Zone or *Naviculopsis biapiculata* Zone.

Samples 18-4, 5-6 cm to 20-3, 50-51 cm (203.0 to 220.5 m) are barren of silicoflagellates. Only sponge spicules, some diatoms, and archaemonads were observed.

Site 337 — Norway Basin

Samples from the upper part of this hole are barren of silicoflagellates. The assemblage observed from Sample 9-4, 140-141 cm to 11, CC (81.5-104.0 m) consists of *Corbisema triacantha*, *Distephanus crux*, *Distephanus speculum*, *Naviculopsis biapiculata*, *Cannopilus hemisphaericus*, *Dictyocha* cf. *fibula*, *Dictyocha frenguelli*, and *Corbisema apiculata* belonging to the *Naviculopsis biapiculata* Zone which includes the uppermost Eocene, lower and middle Oligocene.

Site 338 — Outer Vøring Plateau

Cores 1 to 7 (0.0-76.0 m) are barren of silicoflagellates. Sample 7, CC to 8-2, 58-59 cm (76.0-79.0 m) belong to the *Mesocena circulus* Zone, including the upper part of the middle Miocene and the upper Miocene. The assemblage consists of *Distephanus crux*, *Mesocena circulus*, *Mesocena apiculata*, *Distephanus speculum*, *Mesocena diodon*, *Cannopilus hemisphaericus*. Sample 8-3, 70-71 cm to Sample 11-4, 85-86 cm (79.0-106 m) contain the assemblage of the *Corbisema triacantha* Zone without *Mesocena circulus*, but with *Corbisema triacantha* and *Distephanus longispinus*.

The *Naviculopsis navicula* Zone of the lower Miocene was determined from Sample 12-2, 5-6 cm to Sample 17-4, 85-86 cm (117.0-167.5 m), and is indicated by the presence of *Naviculopsis navicula* and *Naviculopsis quadratum*. Other species are: *Distephanus crux*, *Distephanus speculum*, *Corbisema triacantha*, *Distephanus longispinus*, *Cannopilus hemisphaericus*, *Mesocena apiculata*, and few specimens of *Naviculopsis lata*, *Pseudorocella corona*, and *Mesocena elliptica*. *Distephanus crux* and *Dictyocha pentagona* are abundant in most of the samples (Table 1).

Sample 18-1, 50-51 cm to Sample 19-2, 10-11 cm (171.0-184.0 m) belong to the *Naviculopsis lata* Zone of the upper Oligocene/lower Miocene. The assemblage is the same described from the *Naviculopsis navicula* Zone without *Naviculopsis navicula*. *Naviculopsis lata* becomes more frequent, and *Naviculopsis biapiculata* was observed in this zone.

From Sample 19-2, 85-86 cm to Sample 24-4, 37-38 cm (185.0-234.0 m) the *Naviculopsis biapiculata* Zone was determined with following species: *Distephanus speculum*, *Distephanus crux*, *Cannopilus hemisphaericus*, *Mesocena apiculata*, *Dictyocha hexacantha*. Silicoflagellates are less common in the nannofossil ooze, and disappear in Sample 24-4, 144-145 cm to Sample 26-1, 67-68 cm (234.0-248.0 m). Between Core 26, Section 1 and Core 26, Section 2, a hiatus is indicated by the presence of a silicoflagellate assemblage of the upper Eocene (*Dictyocha quadria* Zone) in the latter and calcareous nannoplankton of Zone NP 24 (middle Oligocene) in Core 26, Section 1.

The *Dictyocha quadria* Zone was determined from Sample 26-2, 109-110 cm to Sample 26-5, 30-31 cm (249.0-254.5 m), with *Naviculopsis ponticula*, *Dictyocha*

quadria, *Mesocena apiculata*, *Dictyochoa hexacantha*, *Distephanus speculum*, *Dictyochoa frenguelli*. The assemblage below, which lacks *Mesocena apiculata*, can be attributed to the upper Eocene *Corbisema bimucronata* Zone. The sediments below Core 29 are barren of silicoflagellates.

Site 339 — Inner Vøring Plateau

Siliceous ooze is intercalated in Quaternary sediments probably due to slumping. From Sample 6-3, 39-40 cm to Sample 8-1, 20-21 cm (51.0-67.0 m) mixed assemblages from the upper Eocene to lower Oligocene were noted. In Sample 7-3, 61-62 cm, a displaced assemblage of the *Mesocena circulus* Zone was found (Table 2). These assemblages were probably redeposited during the time of deposition of the *Distephanus speculum* Zone elsewhere. In Sample 9, CC to Sample 12, CC (84.0-108.0 m) *Corbisema triacantha*, *Corbisema apiculata*, *Corbisema flexuosa*, *Dictyochoa challengerii*, *Dictyochoa hexacantha*, *Mesocena apiculata*, *Naviculopsis constricta*, and probably a new species of *Micromarsupium* are present, indicating the late Eocene to middle Oligocene *Naviculopsis biapiculata* Zone.

Site 340 — Inner Vøring Plateau

Silicoflagellates are present from Core 1, Section 4 to Sample 11, CC (6.0-106.5 m). The assemblages indicate a middle to late Eocene age. The sequence is mixed probably due to diapiric activities in this area. It is possible to recognize three units (A, B, and C) with typical assemblages (Table 3). Unit B (Core 1 to Core 3, Section 1 and Core 6 to Core 8 Section 5) and C (Sample 8, CC to Sample 11, CC) belong to the *Corbisema bimucronata* Zone with the following species present: *Corbisema triacantha*, *Distephanus crux*, *Naviculopsis ponticula*, *Mesocena apiculata*, *Dictyochoa quadria*, *Dictyochoa spinosa*, *Corbisema bimucronata*, *Naviculopsis foliacea*, and *Corbisema flexuosa*. In the lower part of Unit B, a mass occurrence of the diatom *Triceratium barbadense* (diatom 340 in Table 3) was noted. Unit C (Sample 8, CC to Sample 11, CC) probably represents the youngest part of this zone.

Unit A (Sample 3, CC to Sample 5, CC), intercalated in repeated parts of Unit B, probably belongs to the *Naviculopsis foliacea* Zone of the middle Eocene with *Mesocena oamaruensis*, *Naviculopsis ponticula*, *Distephanus speculum*, and *Corbisema spinosa*. *Dictyochoa quadria* is missing.

Site 341 — Inner Vøring Plateau

Silicoflagellates observed in the siliceous ooze which is intercalated in Quaternary sediments of Sample 4, CC to Sample 7, CC (38.0-66.5 m) indicate a middle Miocene age, and represent displaced material with common *Distephanus crux*, *Distephanus speculum*, *Cannopilus hemisphaericus*, and rare *Mesocena apiculata* and *Distephanus longispinus*. Cores 8 to 25 (66.5-342.0 m) are barren of silicoflagellates. In Core 25, only sponge spicules, some diatoms, and archaeomonads were found. Silicoflagellate assemblage of Sample 25, CC to Sample 34, CC (342.0-456.0 m) consists of the following species: *Distephanus crux*, *Mesocena diodon*, *Distephanus speculum*, *Cannopilus hemisphaericus*,

Mesocena circulus, *Mesocena elliptica*, *Mesocena apiculata*, and *Dictyochoa cf. fibula* indicating a middle to late Miocene age (*Mesocena circulus* Zone). Archaeomonads are common in some samples.

Site 342 — Outer Vøring Plateau

Silicoflagellates are not present in Cores 1 and 2, but are common in Sample 3-1, 95-96 cm to Core 6, CC (85.0-151.5 m). The assemblage of Sample 3-1, 95-96 cm to Sample 3-4, 45-46 cm consists of *Distephanus crux*, *Mesocena diodon*, and *Distephanus speculum*. From Sample 3-4, 145-146 cm to Sample 5-6, 115-116 cm, *Distephanus longispinus*, *Cannopilus hemisphaericus*, and *Mesocena apiculata* are present, while *Mesocena diodon* is missing. This interval belongs to the *Corbisema triacantha* Zone of the lower Miocene to middle Miocene.

The sequence from Sample 6-2, 30-31 cm to Sample 6-4, 65-66 cm belongs to the *Naviculopsis navicula* Zone of the lower Miocene, as indicated by the presence of rare *Naviculopsis navicula* and common *Naviculopsis lata*. In the Sample 6-4, 115-116 cm and Sample 6, CC, *Naviculopsis navicula* was not observed. This part seems to belong to the *Naviculopsis lata* Zone of upper Oligocene to lower Miocene.

Site 343 — Lofoten Basin

Displaced silicoflagellates were found in Sample 3-5, 84-85 cm in a siliceous ooze, which is intercalated into Quaternary sediments. The assemblage consists of *Corbisema triacantha*, *Dictyochoa frenguelli*, *Dictyochoa cf. fibula*, and *Corbisema apiculata*. From Sample 5-3, 100-101 cm to Sample 6-1, 128-129 cm (149.5-194.0 m) an assemblage (Table 4) consisting of *Distephanus speculum*, *Corbisema spinosa*, *Naviculopsis foliacea*, *Dictyochoa rotundata*, *Dictyochoa cf. fibula*, *Corbisema apiculata*, *Dictyochoa deflandrei*, *Dictyochoa frenguelli*, and *Naviculopsis cf. minor* is present, probably belonging to the middle Eocene *Naviculopsis minor* Zone. This assemblage is similar to that of part of the so-called "Unter Eozän 4" of the micropaleontological subdivision of the Paleogene in northwestern Germany (Martini, 1974).

Site 345 — Mohns Ridge

First silicoflagellates were found in Sample 6-1, 123-124 cm (56.5 m): *Mesocena apiculata*, *Cannopilus hemisphaericus*, *Distephanus speculum*, *Distephanus crux*, *Distephanus longispinus*, indicating a middle Miocene age (probably *Corbisema triacantha* Zone). *Corbisema triacantha* and *Naviculopsis quadratum* are present in Sample 8-1, 139-140 cm (85.5 m), together with the same species as in Cores 6 and 7. According to Martini (1972), *Naviculopsis quadratum* in its typical form indicates an early Miocene age and is present in the upper part of the *Naviculopsis navicula* Zone.

In Core 9 (112.5-122.0 m) only very few silicoflagellates are present, such as *Distephanus crux*, *Corbisema triacantha*, *Distephanus speculum*, and *Naviculopsis lata*. They are more frequent in the upper part of Core 10 (131.5-141.0 m). The assemblage with *Corbisema triacantha*, *Distephanus crux*, *Dictyochoa fibula*, *Naviculopsis lata*, *Distephanus speculum*, *Mesocena*

TABLE 3
Silicoflagellates in Selected Samples from Site 340 Representing the Upper Eocene Interval

Sample (Interval in cm)	<i>Corbisema apiculata</i>	<i>Corbisema bimucronata</i>	<i>Corbisema flexuosa</i>	<i>Corbisema hastata</i>	<i>Corbisema ovalis</i>	<i>Corbisema spinosa</i>	<i>Dietyocha cf. fibula</i>	<i>Dietyocha frenguelli</i>	<i>Dietyocha hexacantha</i>	<i>Dietyocha pentagona</i>	<i>Dietyocha quadria</i>	<i>Dietyocha torta</i>	<i>Dietyocha sp.</i>	<i>Distephanus crux</i>	<i>Distephanus quinqueangellus</i>	<i>Distephanus speculum</i>	<i>Mesocena apiculata</i>	<i>Mesocena concava</i>	<i>Mesocena oamaruensis</i>	<i>Naviculopsis biapiculata</i>	<i>Naviculopsis constricta</i>	<i>Naviculopsis foliacea</i>	<i>Naviculopsis ponticola</i>	<i>Naviculopsis aff. ponticola</i>	<i>Naviculopsis cf. ponticola</i>	<i>Naviculopsis sicca</i>	Diatom 340 mass occurrence	Silicoflagellate Zones		
1-5, 94-95	X	X	X	X					X	X			X						X	X	X	X	X	X						
1, CC	X	X	X	X					X	X			X		X				X	X			X	X						
2-1, 110-111	X	X	X	X	X				X	X					X				X			O	X	X						
2, CC	X	X									X		X	X					X	cf.		X	X							
3-1, 140-141	X	X									X		X									X	X	X						
3, CC	X												X						X	X		X	X							
4-1, 115-116	X			X															X	X		X	X							
4-3, 100-101	X				X	X							X	X	X				X			X	X							
4, CC	X	X	X	X									X	X	X				X			X	X							
5-1, 110-111	X	X	X										X	X	X				X			X	X							
5, CC	X	X	X										X	X					X			X	X							
6-1, 70-71	X	X	X						X	X			X	X					X	X		X	X							
6, CC	X								X	X			X									X	X							
7-1, 95-96	X	X	X	X					X	X			X		X							O								
7-4, 145-146	X	X		X	X	X					X							X				X	X	X						
7, CC	X			X	X	X					X								X	X		X	X	X						
8-1, 140-141	X			X	X	X					X				X				X			X	X	X						
8-3, 125-126	X			X	X	X					X				X				X			X	X	X						
8-5, 65-66	X			X	X	X					X				X				X			X	X	X						
8, CC	X	X	X						X				X									X	X	X						
9-1, 60-61	X	X		X	X	X					X		X								X	X	X							
9, CC	X	X	cf.		X	X	X				X		X		cf.				X		X	X	X							
10-2, 100-101	X	X		X	X	X	X	X	X	X			X	X							X	X	X							
10, CC	X	X		X	X	X	X	X	X	X			X								X	X	O							
11-2, 58-59	X	X		X	X	X	X	X	X	X			X	X							X	X	X							
11, CC	X	X		X	X	X	X	X	X	X			X						X		X	O	X							

Note: X = rare to few, O = common or dominant, O = mass occurrence of diatom 340 (= *Triceratium barbadense*). Note that the succession in this particular hole is not in order due to diapiric processes. Unit A probably is the oldest and Unit C is the youngest part.

TABLE 4
Silicoflagellates in Selected Samples from Site 343 Representing the Early Middle Eocene Interval

Sample (Interval in cm)	<i>Cannopilus hemisphaericus</i>	<i>Corbisema apiculata</i>	<i>Corbisema ovalis</i>	<i>Corbisema spinosa</i>	<i>Dietyocha deflandrei</i>	<i>Dietyocha cf. epiodon</i>	<i>Dietyocha cf. fibula</i>	<i>Dietyocha frenguelli</i>	<i>Dietyocha rotundata</i>	<i>Dietyocha cf. transitoria</i>	<i>Distephanus antiquus</i>	<i>Distephanus quinqueangellus</i>	<i>Distephanus speculum</i>	<i>Mesocena elliptica</i>	<i>Mesocena cf. oamaruensis</i>	<i>Naviculopsis foliacea</i>	<i>Naviculopsis cf. minor</i>	Silicoflagellate Zone
5-3, 100-101	X	X	X	X	X	X	O	X	X	X	X	X	X	X	X	X		
5-4, 25-26	X	X	X	X	X	X	X	X	X	X	X	X	X	X	X	X		
5-6, 35-36	X	X	X	X	X		O	X	X	X	cf.	X	X	X	X	X		
5-6, 110-111	X	X		X	X	X	O	X	X	X	X	X	X	X	X	X		
6-1, 128-129	cf.		X	cf.	X	X	O	X	X	X	X	X	X	X	X	X		

Note: X = rare to few, O = common or dominant.

apiculata probably belongs to the late Oligocene to early Miocene *Naviculopsis lata* Zone. In the lower part of Core 10, silicoflagellates are only sporadically present. Below Core 10, they are missing. Archaeomonads are common in some samples.

Site 346 — Jan-Mayen Ridge

Cores 1 to 3 and upper part of Core 4 are barren of silicoflagellates. They are rare from Sample 4-5, 40-41 cm to Sample 11-4, 75-76 cm (33.5-98.0 m), below only sponge spicules and archaeomonads were found. Few silicoflagellates were observed from Sample 4-5, 40-41 cm to Sample 5-2, 131-132 cm. They become more common from Sample 5-3, 50-51 cm to Sample 6-2, 84-86 cm. Below, a decrease in abundance down to Sample 12, CC is noted. The assemblage consists of *Corbisema triacantha*, *Distephanus crux*, *Mesocena apiculata*, *Cannopilus hemisphaericus*, *Dictyochoa cf. fibula*, and *Distephanus speculum* indicating the middle Miocene *Corbisema triacantha* Zone. Archaeomonads are generally abundant in all samples. Below Core 12, CC, sediments are barren of silicoflagellates.

Site 348 — Iceland Plateau

The first silicoflagellates are present in Core 5 (56.5-66.0 m) with *Distephanus octonarius* and several varieties of *Distephanus speculum*, indicating cold water temperatures. The assemblage belongs to the upper Pliocene-Pleistocene *Distephanus speculum* Zone. The *Distephanus boliviensis* Zone was noted from Sample 6-1, 105-106 cm to Sample 10, CC (66.0-142.0 m), and represents the uppermost Miocene to lower Pliocene. Species found include: *Distephanus boliviensis*, *Distephanus speculum*, *Distephanus quinquangellus*, and *Mesocena diodon*, which has its last occurrence within this zone (Table 5).

The *Mesocena circulus* Zone is determined from Sample 11-1, 20-21 cm to Sample 18, CC (151.5-265.0 m). The assemblage consists of *Mesocena circulus*, *Mesocena diodon*, *Mesocena apiculata*, *Distephanus crux*, *Distephanus speculum*, *Mesocena elliptica*, *Cannopilus hemisphaericus*, and *Dictyochoa fibula*. The lower part of this interval lacks *Mesocena circulus*, except for one specimen in Sample 18, CC. As *Corbisema triacantha* is rather rare near its upper limit, part of the interval from Cores 15 to 18 may belong to the *Corbisema triacantha* Zone. Also, a strong increase in aberrant forms was noted in Cores 15 and 16 (A in Table 5), indicating abnormal conditions. Noteworthy is the mass occurrence of "diatom 348" (= *Stephanogonia horridus*) in the lower part of Core 16.

Site 350 — Jan-Mayen Ridge

Silicoflagellates were observed only in Core 3, CC (65.0 m) indicating a probable middle Miocene age. The assemblage consists of few specimens of *Distephanus crux*, *Distephanus speculum*, and *Dictyochoa cf. fibula*.

Hole 352A — Iceland-Faeroe Ridge

Only few silicoflagellates were found in Sample 352A-3-1, 65-66 cm. The assemblage consists of *Dic-*

tyocha speculum, and *Cannopilus hemisphaericus*. Nanoplankton above and below this sample indicates an Oligocene age. The sample is rich in volcanic glass.

SKELETAL CHARACTERISTICS OF SILICOFLAGELLATES

Spherical-like Protuberances in Silicoflagellates

Deflandre (1933) reported two cases of "sphères énigmatiques" in a study of skeletal abnormalities found in fossil silicoflagellates. One "sphère énigmatique" was present in the central bar of a "*Dictyochoa fibula* Ehr. var. *brevispina* Lemm." from Sendai, Japan. According to the illustrations (Deflandre 1933, pl. 9 fig. 1, 2; pl. 10 fig. 1) and the description given, there is a globular thickening at the connecting point of the central bar with the two supporting bars. The second specimen with "sphères énigmatiques" probably represents an abnormal specimen of "? *Distephanus speculum* (Ehr.) Haeck." from Redondo, in which globular thickenings are again present at the connecting points, in this case between the supporting bars and the basal ring (Deflandre 1933, pl. 1 fig. 3-5; pl. 2 fig. 2).

Mesocena nodulifera Tsumura and *Mesocena nodulifera* var. *triangula* Tsumura, described in Tsumura (1963), and, showing globular thickenings on the basal ring, may also represent morbid specimens of already described species, in this case most likely *Mesocena diodon* Ehrenberg and *Mesocena oamaruensis* (Schulz). Mandra (1969) described several specimens of silicoflagellates found during the study of *Vema* cruise 17 (South Atlantic Ocean, lat 51°08.5'S, long 54°22'W) sediments. They had spherical protuberances at each of the four corners of the basal ring. As these structures seem to be unknown in any described silicoflagellate genus, Mandra erected the new genus *Hannaites*, and named the forms in Eocene sediments *Hannaites quadria*. During Leg 29, this species was recovered in late Eocene sediments at Sites 281 and 283 in the Tasman Sea (Perch-Nielsen, 1975; Bukry, 1975b).

In the late Eocene silicoflagellate assemblage at Site 340 (Leg 38, Inner Vøring Plateau), aside from some broken corners with spheres, a complete specimen of *Mesocena apiculata* (Schulz) was found (Plate 10, Figure 5). This had spherical-like protuberances at each of the three corners of the basal ring, which are identical with those found in *Hannaites quadria*. The spherical protuberances in both species occupy corner positions in all specimens found so far. The surface of the spheres are covered by numerous bosses, which was noted by Mandra (1969), and are illustrated for the present species on Plate 10, Figures 3b, c (this paper). Unfortunately, these forms are relatively rare, and, up to now, were not investigated with the scanning electron microscope. However, it is speculated that the surface structures at the spheres are enlarged silicoflagellate fine structure of knobs, with connecting ridges and depressions in between.

Hannaites quadria is reported from the late Eocene from the South Atlantic and from the Tasman Sea. The same stratigraphic interval was recovered during Leg 7 in the equatorial Pacific (Hole 65/1), and during Leg 38

TABLE 5
Silicoflagellates in Selected Samples from Site 348 Representing
the Middle Miocene to Early "Glacial" Interval

Sample (Interval in cm)	<i>Cannopilus depressus</i>	<i>Cannopilus ernestinae</i>	<i>Cannopilus hemisphaericus</i>	<i>Dictyochoa cf. epiodon</i>	<i>Dictyochoa cf. fibula</i>	<i>Distephanus binoculus</i>	<i>Distephanus boliviensis</i>	<i>Distephanus crux</i>	<i>Distephanus longispinus</i>	<i>Distephanus quinqueangellus</i>	<i>Distephanus speculum</i>	<i>Distephanus s. polyactis</i>	<i>Mesocena apiculata</i>	<i>Mesocena circulus</i>	<i>Mesocena diodon</i>	<i>Mesocena elliptica</i>	Common aberrant forms	Diatom 348 mass occurrence	Silicoflagellate Zones
5-5, 145-146 5, CC										X	X								<i>D. speculum</i> Zone
6-1, 105-106 6, CC						O				X	X								
7-2, 30-31						X				X	X								
7-2, 100-101						X				O	O				X				
7-5, 85-86 7, CC						X	X			X	X								<i>D. boliviensis</i> Z.
8-3, 145-146						X			X	O	O								
9-3, 80-81							X		X	X	X				X				
9-4, 60-61									X	O	X				X				
9, CC										X	X				X				
10, CC										X	X				X				
11-1, 20-21		X	X	X	X	X	X	X	X	O	O		O	X	X				
11-3, 70-71		X	X	X	X	X	X	X	X	O	O		O	X	X				
11-5, 140-141		X	X	X	X	X	X	X	X	O	O		X	X					
12-1, 120-121		X	X	X	X	O	O	O	O	O	O		O	X	X				
12-6, 85-86		X	X	X	X	X	X	X	X	O	X		X	X					
12, CC	X			X		X	O	X	X	X	X		X	X					
13-2, 90-91						X		X	X	X	X		X	X					
13, CC		X						X	X	X	X		X	X					
14-1, 90-91	X	X	X	O		X		X	X	X	X		X	X					<i>M. circulus</i> Zone
14, CC	O	X	X			O	X	X	X	O	O		O	X					
15-1, 85-86	X					X	X	X	X	X	X		X	X					
15-3, 85-86	O	X	X			O	X	X	X	O	O						A		
15, CC	X	O	X	X		O	X	X	O	X	X		X	X			A		
16-1, 85-86	O	X				X	X	O	X	O	X		X	O			A		
16-4, 85-86								O	X	X	X		X	X					•
16, CC								X	X										•
17, CC		X	X			X	X	X	X	X	X		X	X					
18, CC	X	X	X	X		X		X	X	X	X		X						

Note: X = rare to few, O = common or dominant, • = mass occurrence of diatom 348 (= *Stephanogonia horridus*) A = common occurrence of aberrant silicoflagellate specimens.

(Sites 338 and 340). However, *Hannaites quadria* with the typical spherical corners was not found. In the Norwegian-Greenland Sea (Sites 338 and 340), specimens identical with *Hannaites*, except in the corner protuberances were found in fair numbers in the interval in question (Plate 2, Figure 4; Plate 10, Figure 1). The corners of the Leg 38 specimens are rounded, whereas specimens encountered in Hole 65/1 in the equatorial Pacific show somewhat flattened corners, but without spines (Plate 8, Figure 15).

These occurrences, and the *Mesocena* specimens with spherical protuberances (Plate 10, Figures 3-5), lead to the conclusion that this peculiar structure cannot be used for generic differentiation, and that *Hannaites* Mandra is a synonym of *Dictyochoa* Ehrenberg. The occurrence of *Dictyochoa quadria* (Mandra) nov. comb.

with spherical protuberances at the corners and obviously restricted to the southern hemisphere are too rare and incompletely known to give speculation on the global development of this species. However, they certainly represent an aberrant and morbid development as Deflandre (1933) suggested and described for the aberrant specimens of "*Dictyochoa fibula* var. *brevispina*" and "*?Distephanus speculum*."

Silicoflagellate Surface Ornamentation

Surface ornamentation of Neogene and Quaternary silicoflagellates were described by several authors (Deflandre, 1950; Jerković, 1969; Bachmann and Keck, 1969) as being a network of crests and depressions in most species investigated. A few specimens of the

aberrant genus *Deflandryocha* were reported to lack surface ornamentation (Jerković, 1969), whereas specimens of *Distephanus speculum* seem to have only knots on the surface of the skeleton (Wornhardt, 1971).

Martini (in press) reported that Neogene and Quaternary silicoflagellates from the equatorial Pacific, in most cases, exhibit only small knots on an otherwise smooth surface, and that assemblages from California show better developed surface ornamentation. This probably indicates a dependence for the presence of surface structures on temperature, the presence of calcareous ingredients in the bottom sediment, and solution. Bachmann and Keck (1969) and Jerković (1969), on the other hand, related the development of surface ornamentation to the life span of silicoflagellates, inasmuch as well developed surface ornamentation is present only in the adult stage.

Silicoflagellates, found in sediments recovered in the Norwegian-Greenland Sea during Leg 38, can be divided into several groups with regard to their surface ornamentation, and are described below. Details of skeletons of several species are illustrated on Plates 5 and 6.

The first group is characterized by a system of long crests with rare ridge-like knots approximately 90° to the axis of the long crest. These were described in *Mesocena diodon* (Plate 6, Figure 7) and *Mesocena elliptica* (Plate 6, Figure 6). Closely related is the second group including *Corbisema triacantha* (Plate 1, Figures 8, 9), *Corbisema apiculata* (Plate 5, Figures 4, 5), and *Naviculopsis ponticula* (Plate 6, Figure 8), which show a similar ornamentation on the radial and supporting spines. However, in this group, most of the basal ring and apical structure is covered by a net-like ornamentation of short crests and depressions. Also belonging to this group are forms in which the entire distal side is covered by net-like crests (some long and some short) and peaks like *Dictyocha pentagona* (Plate 5, Figure 11), *Dictyocha* cf. *epiodon* (Plate 5, Figure 7), and *Dictyocha* cf. *fibula* (Plate 5, Figure 8).

Net-like ornamentation, in which the crests are of almost equal length on the basal ring, are found in the fourth group which includes *Mesocena apiculata* (Plate 6, Figure 5), as well as *Dictyocha challengerii* (Plate 1, Figure 10) and *Dictyocha quadria* (Plate 1, Figure 9) with the same ornamentation on the basal ring, but with faint ornamentation of short crests and peaks or without on the apical structure.

A combination of the morphologic feature of groups 1 to 3 is present in another group including *Distephanus speculum* (Plate 6, Figures 1a-c) and *Cannopilus ernestinae* (Plate 6, Figures 2-4). The basal ring is covered by long crests (Plate 6, Figures 1a, 2), with a few knots on crossing points at the basal part (Plate 6, Figures 1b, 2) of the apical ring or structure. On the apical structure, knots and connecting ridges are most common on the higher parts (Plate 6, Figures 1c, 4), but apical spines seem to have a reduced number of knots (Plate 6, Figure 4). The last group is characterized by knots, which concentrate on the apical bar or apical structure, but are present also, to a lesser extent, on the basal ring. *Distephanus boliviensis* (Plate 5, Figure 12), and *Naviculopsis lata* (Plate 6, Figures 9, 10) belong to this group.

An extremely coarse surface ornamentation on silicoflagellate skeletons was noted in the late Eocene *Corbisema bimucronata* Zone of Hole 340, and in the early to middle Oligocene *Naviculopsis biapiculata* Zone of Hole 339, both from the Inner Vøring Plateau. At Site 339, the following species are involved: *Corbisema apiculata*, *Dictyocha* cf. *fibula*, *Dictyocha quadria*, *Dictyocha pentagona*, *Mesocena oamaruensis*, *Naviculopsis biapiculata*, and at Site 340, *Cannopilus hemisphaericus*, *Corbisema triacantha*, *Dictyocha hexacantha*, *Dictyocha challengerii*, *Mesocena apiculata*, and *Mesocena schulzii* (Plates 1, 5, and 6).

A very peculiar surface ornamentation was noted in a specimen of *Corbisema* sp. (Plate 1, Figure 11) in Sample 339-7, CC (*Distephanus speculum* Zone), which may be reworked from older strata. The three apical bars form a plate (Plate 5, Figure 6), which shows a thickening along the rim of the otherwise smooth apical plate, with faint ridges pointing towards the center. The presence of well-developed surface ornamentation in almost all specimens found during electron-microscope studies of Leg 38 material, indicate a relation to temperature, and possibly solution. Some lower latitude species were reported (by some authors), to lack a well-developed surface ornamentation, or to exhibit only a faint one. However, a detailed study of some selected species on a more global scale is necessary to get a solid basis for the present theories.

SYSTEMATIC PALEONTOLOGY

In the description of species encountered during Leg 38 no attempt is made to give full references to all synonyma, but reference to the first description of a species and reference to a more recent description and figure will be given. In a few cases, a more detailed reference list is presented, where in recent times different names have been used for the same taxa.

The present authors are not satisfied with the generic differentiation, especially between *Corbisema*, *Dictyocha*, *Distephanus*, and *Cannopilus*, as all gradations are present between these genera and aberrant forms of a given genus show often the characteristics of another genus. However, they remain in this paper with the differentiation used by most authors in order to avoid further confusion: *Corbisema* including triangular forms with apical rods or apical plate connected by rods to the basal ring; *Dictyocha* including four- to eight-sided forms with apical rods only; *Hannaites* is regarded as junior synonym of *Dictyocha*; *Distephanus* including four- and more sided forms with apical windows connected by rods to the basal ring; *Cannopilus* having at least a semiglobular apical structure with a number of apical windows; *Mesocena* including all forms consisting of an apical ring only; and *Naviculopsis* showing navicular outline and two radial spines in direction of the long axis.

Splitting of the mesocenid forms in a number of genera (Dumitrica, 1973; Bachmann, 1970; Locker, 1974), or extensive splitting of species in a vast number of "subspecies" (Bukry, 1975), seems unrealistic and not useful, and is not followed by the present authors.

Type specimens are deposited in the Natur-Museum und Forschungs-Institut Senckenberg, Frankfurt am Main, Germany, under catalogue numbers SM.B 12796-12799.

Class Silicoflagellatophyceae Borgert, 1891

Family DICTYOHACEAE Lemmermann, 1901

Genus CANNOPILUS Haeckel, 1887

Cannopilus depressus (Ehrenberg) (Plate 3, Figures 11, 12)

1854 *Halicalyptra depressa* Ehrenberg, Mikrobiologie, pl. 18, fig. 111.

1974 *Cannopilus depressus* (Ehrenberg), Locker, Eclog. Geol. Helv., v. 67, p. 639, pl. 4, fig. 3.

Remarks: Included here, are globular forms which are similar or identical with those figured by Locker (1974) for the type material of Ehrenberg.

Occurrence: Rare specimens were encountered in the *Mesocena circulus* Zone of Site 348 (Icelandic Plateau).

***Cannopilus ernestinae* Bachmann**

(Plate 3, Figures 8-10; Plate 6, Figures 2-4; Plate 9, Figures 6, 7)

1962 *Cannopilus ernestinae* Bachmann, Mikrokosmos, v. 51, p. 255, fig. 1.

1969 *Cannopilus ernestinae* Bachmann, Bachmann and Keck, Mikrokosmos, v. 58, p. 204, pl. 2, fig. 2.

Remarks: Specimens found show well-developed apical horns and are identical with those described by Bachmann and Keck (1969) from the upper Miocene of Santa Barbara, California. Specimens commonly have six radial spines, but some with five radial spines were also found.

Occurrence: In the present material ranging from the upper part of the *Corbisema triacantha* Zone to the middle part of the *Mesocena circulus* Zone at Sites 338 (Vøring Plateau) and 348 (Icelandic Plateau).

***Cannopilus hemisphaericus* (Ehrenberg)**

(Plate 3, Figure 7; Plate 9, Figure 5)

1844 *Dictyochoa hemisphaerica* Ehrenberg, Ber. Akad. Wiss. Berlin, p. 266.

1974 *Cannopilus hemisphaericus* (Ehrenberg), Locker, Ecolog. Geol. Helv., v. 67, p. 639, pl. 4, fig. 1, 4, 5, 7, 8.

Remarks: Basal ring and radial spines are generally in one plane. Apical structure semiglobular with varying number of apical "windows."

Occurrence: Rare occurrence in the *Naviculopsis minor* Zone at Site 343. Consistent occurrence from the *Naviculopsis biapiculata* Zone to the top of the *Mesocena circulus* Zone. Present at Sites 336, 338, 339, 340, 341, 343, 345, 348.

***Cannopilus* sp.**

(Plate 8, Figure 10)

Remarks: A badly preserved single specimen possibly related to *Cannopilus depressus* was found in Sample 338-20-2, 30-31 cm in the upper part of the *Naviculopsis biapiculata* Zone (Vøring Plateau).

Genus CORBISEMA Hanna, 1928

***Corbisema apiculata* (Lemmermann)**

(Plate 1, Figures 1-3; Plate 5, Figures 4, 5; Plate 7, Figures 1, 2)

1901 *Dictyochoa triacantha apiculata* Lemmermann, Ber. Dtsch. Bot. Ges., v. 19, p. 259, pl. 10, fig. 19, 20.

1975 *Corbisema apiculata* (Lemmermann), Perch-Nielsen, Initial Rept. Deep Sea Drilling Project, v. 29, p. 685, pl. 2, fig. 15, 16, 19; pl. 3 fig. 19, 20, 24; pl. 5, fig. 1, 2.

Remarks: This species shows a great variation in size and outline, as well as in length of apical spines, and in shape of supporting spines, which may have hooks in some specimens (Plate 1, Figure 1).

Occurrence: Consistent occurrence at least from the *Naviculopsis minor* Zone to the top of the *Mesocena circulus* Zone. Present at Sites 338, 339, 340 (Vøring Plateau), 343 (Lofoten Basin), and 348 (Icelandic Plateau).

***Corbisema cf. archangelskiana* (Schulz)**

(Plate 7, Figure 5)

1928 *Dictyochoa triacantha archangelskiana* Schulz, Bot. Archiv, v. 21, p. 250, fig. 33a-c, 77, 78.

1975 *Corbisema archangelskiana* (Schulz), Perch-Nielsen, Initial Rept. Deep Sea Drilling Project, v. 29, p. 685, pl. 3, fig. 17, 22.

Remarks: A few specimens, some of which show very short radial spines and are not as angular in outline as that illustrated in Schulz (1928), were noted in the Oligocene.

Occurrence: Rare specimens in the *Naviculopsis biapiculata* Zone at Site 338 (Vøring Plateau).

***Corbisema bimucronata* Deflandre**

(Plate 7, Figure 12)

1950 *Corbisema bimucronata* Deflandre, Microscopie, v. 2, p. 191, fig. 174-177.

1974 *Corbisema bimucronata* Deflandre, Bukry and Foster, J. Res. U.S. Geol. Surv., v. 2, p. 307, fig. 1a.

Occurrence: Rare specimens in the *Corbisema bimucronata* Zone at Site 340 (Vøring Plateau).

***Corbisema flexuosa* (Stradner)**

(Plate 1, Figure 7; Plate 7, Figure 7)

1961 *Corbisema triacantha flexuosa* Stradner, Erdöl u. Kohle, v. 14, p. 89, pl. 1, fig. 1-8.

1975 *Corbisema flexuosa* (Stradner), Perch-Nielsen, Initial Rept. Deep Sea Drilling Project, v. 29, p. 685, pl. 3, fig. 10.

Remarks: Included are forms with somewhat concave sides and broad apical bars, sometimes forming a plate-like structure. Larger specimens with shorter radial spines illustrated as *Corbisema* sp. (Plate 7, Figure 6) may also belong to this species.

Occurrence: In the present material, ranging from the *Naviculopsis foliacea* Zone(?) to the lower part of the *Naviculopsis navicula* Zone, found at Sites 338, 339, 340 (Vøring Plateau).

***Corbisema hastata* (Lemmermann)**

(Plate 1, Figure 10)

1901 *Dictyochoa triacantha hastata* Lemmermann, Ber. Dtsch. Bot. Ges., v. 19, p. 259, pl. 10, fig. 16, 17.

1975 *Corbisema hastata* (Lemmermann), Perch-Nielsen, Initial Rept. Deep Sea Drilling Project, v. 29, p. 685, pl. 3, fig. 2-4, 8.

Remarks: This species, which was reported as common throughout the early Paleogene in warmer waters by Bukry and Foster (1974), is remarkably rare in the material from the Norwegian-Greenland Sea.

Occurrence: Rare in the *Naviculopsis biapiculata* Zone at Site 339 and a cf. specimen in Sample 340-9, CC (*Corbisema bimucronata* Zone) from the Vøring Plateau.

***Corbisema ovalis* Perch-Nielsen**

(Plate 1, Figures 4, 5; Plate 7, Figures 3, 4)

In press *Corbisema ovalis* Perch-Nielsen, Geol. Soc. Denmark Bull., pl. 1, fig. 12, 13, pl. 2, fig. 7.

Remarks: Specimens show rounded triangular outline with strongly concave sides, and very short radial spines pointing downwards. Some specimens have hooks on the supporting spines (Plate 7, Figure 3).

Occurrence: Rare or few in the *Naviculopsis minor* Zone at Site 343 (Lofoten Basin), in the *Naviculopsis foliacea* Zone (?) at Site 340, and in the *Corbisema bimucronata* Zone at Sites 338 and 340 (Vøring Plateau).

***Corbisema spinosa* Deflandre**

(Plate 7, Figure 9)

1950 *Corbisema spinosa* Deflandre, Microscopie, v. 2, p. 193, fig. 178-182.

1975 *Corbisema spinosa* Deflandre, Perch-Nielsen, Initial Rept. Deep Sea Drilling Project, v. 29, p. 686, pl. 3, fig. 23.

Remarks: Often confused with *Dictyochoa hexacantha* by various authors. This species shows apical spines on the apical rods, which are not in the same plane as the basal ring.

Occurrence: In the present material, rare to frequent in the *Naviculopsis minor* Zone to the lower part of the *Naviculopsis biapiculata* Zone. Found at Sites 338, 339, 340 (Vøring Plateau), and 343 (Lofoten Basin).

***Corbisema triacantha* (Ehrenberg)**

(Plate 1, Figures 8, 9)

1845 *Dictyochoa triacantha* Ehrenberg, Ber. Akad. Wiss. Berlin, 1844, p. 80.

1974 *Corbisema triacantha* (Ehrenberg), Locker, Ecolog. Geol. Helv., v. 67, p. 634, pl. 1, fig. 10.

Occurrence: Rare to frequent from the *Naviculopsis biapiculata* Zone to the top of the *Corbisema triacantha* Zone. Present at Sites 336 (Iceland-Faeroe Ridge), 337 (Norway Basin), 338, 339, 341, 342 (Vøring Plateau), 345 (Mohns Ridge), and 346 (Jan-Mayen Ridge).

***Corbisema* sp.**

(Plate 1, Figure 11)

Remarks: Rare specimens of a *Corbisema* species with a large flat apical plate, similar to *Corbisema flexuosa*, were found in the

Distephanus speculum Zone at Site 339, and may be reworked from older strata.

Genus *DICTYOCHA* Ehrenberg, 1840

Dictyocha ausonia Deflandre

1950 *Dictyocha ausonia* Deflandre, *Microscopie*, v. 2, p. 195, fig. 194-202.

Remarks: Forms included are within the variation of *Dictyocha ausonia* published by Deflandre (1950). Specimens found were covered by diatom debris and they are not illustrated.

Occurrence: Rare specimens are present in the *Naviculopsis lata* Zone and *Naviculopsis navicula* Zone at Site 338 (Vøring Plateau).

Dictyocha challengerii n. sp.

(Plate 2, Figure 8; Plate 5, Figure 10; Plate 8, Figure 3)

Description: Large pentagonal form with simple apical structure and short radial spines. Outline of the basal ring slightly concave at the connecting points with the apical rods. Apical structure triradiate in the central part with two bifurcating rods and one straight rod, leading to the basal ring, resulting in three larger and two smaller "windows." Surface ornamentation on the distal side of the basal ring net-like, apical structure with faint ornamentation of short crests and peaks, or without ornamentation.

Size: 110-125 μ m.

Remarks: Distinguished from the similarly constructed *Dictyocha pentagona* by the large size and the concavity of the basal ring at the connecting points with the apical rods. Surface ornamentation similar to that of *Dictyocha quadria*.

Occurrence: Few in the late Eocene to middle Oligocene *Naviculopsis biapiculata* Zone at Site 339 (Vøring Plateau).

Holotype: SM.B 12796.

Type locality: Site 339 (Vøring Plateau) Core 12, Section 3.

Dictyocha deflandrei Frenguelli

(Plate 7, Figure 11)

1940 *Dictyocha deflandrei* Frenguelli, *Rev. Mus. La Plata*, ser. 2, v. 2, p. 65, fig. 14a-d.

1975a *Dictyocha deflandrei* Frenguelli, Bukry, Initial Rept. Deep Sea Drilling Project, v. 28, p. 711, pl. 1, fig. 7-10.

Occurrence: Rare specimens have been found in the *Naviculopsis minor* Zone at Site 343 (Lofoten Basin), and in the *Dictyocha quadria* Zone at Site 338 (Vøring Plateau).

Dictyocha cf. *epiodon* Ehrenberg

(Plate 5, Figure 7; Plate 8, Figure 1)

1845 *Dictyocha epiodon* Ehrenberg, *Ber. Akad. Wiss. Berlin* 1844, p. 79.

1974 *Dictyocha epiodon* Ehrenberg, Locker, *Eclog. Geol. Helv.*, v. 67, p. 634, pl. 1, fig. 1, 4.

Remarks: Although the type material of the Ehrenberg collection was recently revised by Locker (1974), the confusion within the "*Dictyocha fibula*" group and "*Dictyocha epiodon*" group is not solved. A detailed study and application of statistical methods seems necessary which is beyond the scope of the present paper. All forms of more or less quadrate outline with four radial spines, and vertical central bar supported by four apical rods are included here. A differentiation in subspecies or varieties was not attempted.

Occurrence: Rare in *Naviculopsis minor* Zone at Site 343 (Lofoten Basin), in the *Corbisema bimucronata* Zone, the *Naviculopsis navicula* Zone, and *Mesocena circulus* Zone at Site 338 (Vøring Plateau). Few in the *Mesocena circulus* Zone at Site 348 (Icelandic Plateau) (compare Tables 1 to 5). Also occasionally present at Sites 339 and 342 (Vøring Plateau).

Dictyocha cf. *fibula* Ehrenberg

(Plate 2, Figures 1-3; Plate 5, Figure 8; Plate 8, Figures 2, 4)

1838 *Dictyocha fibula* Ehrenberg, *Abh. Akad. Wiss. Berlin* 1836, p. 129.

1974 *Dictyocha fibula* Ehrenberg, Locker, *Eclog. Geol. Helv.*, v. 67, p. 635, pl. 1, fig. 3, 6, 11.

Remarks: As discussed in *Dictyocha* cf. *epiodon*, the confusion within the "*Dictyocha fibula*" group is not yet solved. Included in *Dictyocha* cf. *fibula* are forms of more or less quadrate basal ring with four radial spines and horizontal central bar supported by four apical

rods. Size of the basal ring and length of the radial spines are rather variable. A few examples are illustrated on the plates listed. A very large variety was found in Core 27 at Site 341, and in Core 14 at Site 348, both in the *Mesocena circulus* Zone (Plate 2, Figures 1, 2 and Plate 8, Figure 2).

Occurrence: Present in the *Naviculopsis minor* Zone at Site 343 (Lofoten Basin), and the *Naviculopsis foliacea* Zone (?) and *Corbisema bimucronata* Zone at Site 340 (Vøring Plateau). Rare in the *Corbisema bimucronata* Zone, *Naviculopsis lata* Zone, the *Naviculopsis navicula* Zone and *Corbisema triacantha* Zone at Site 338 (Vøring Plateau). Few to fairly common in the *Mesocena circulus* Zone at Site 348 (Icelandic Plateau). Also occasionally present at Site 336 (Iceland-Faeroe Ridge), 339 and 342 (Vøring Plateau), 345 (Mohns Ridge), and 346 (Jan-Mayen Ridge).

Dictyocha frenguelli Deflandre

(Plate 2, Figure 9)

1950 *Dictyocha frenguelli* Deflandre, *Microscopie*, v. 2, p. 194, fig. 188-193.

1975 *Dictyocha frenguelli* Deflandre, Perch-Nielsen, Initial Rept. Deep Sea Drilling Project, v. 29, p. 686, pl. 4, fig. 14, 17; pl. 5, fig. 1.

Remarks: The few specimens found show only short spines near the base of the apical rods supporting the basal ring. A five-sided specimen, with well-developed spines (Plate 2, Figure 9), was found in Sample 340-11, CC.

Occurrence: Present in the *Naviculopsis minor* Zone at Site 343 (Lofoten Basin), very rare in the *Corbisema bimucronata* Zone at Site 340, and few in the *Dictyocha quadria* Zone at Site 338 (both Vøring Plateau).

Dictyocha hexacantha Schulz

(Plate 2, Figure 7; Plate 7, Figure 10)

1928 *Dictyocha hexacantha* Schulz, *Bot. Arch.*, v. 21, p. 255, fig. 43.

1975 *Corbisema hexacantha* (Schulz), Perch-Nielsen, Initial Rept. Deep Sea Drilling Project, v. 29, p. 685, pl. 3, fig. 13, 14.

Remarks: This species is characterized by a triangular apical structure and six radial spines, three of which originate from the connecting point of the apical bars with the basal ring, and which are in the same plane as the basal ring.

Occurrence: In the present material found in the *Corbisema bimucronata* Zone at Site 340 and in the *Naviculopsis biapiculata* Zone at Site 339 (both Vøring Plateau).

Dictyocha pentagona (Schulz)

(Plate 2, Figures 5, 6; Plate 5, Figure 11; Plate 8, Figures 5, 8, 9)

1928 *Dictyocha fibula* var. *pentagona* Schulz, *Bot. Arch.*, v. 21, p. 255, fig. 41a.

1973 *Dictyocha pentagona* (Schulz), Bukry and Foster, Initial Rept. Deep Sea Drilling Project, v. 16, p. 827, pl. 3, fig. 10.

Remarks: Forms included here are five- or six-sided, and show a crooked apical structure which is connected to the basal ring by five or six, respectively, bars of unequal length. They differ from *Dictyocha challengerii* in the smaller size and the more angular outline.

Occurrence: Present in fair number in the *Corbisema bimucronata* Zone and *Dictyocha quadria* Zone at Sites 338 and 340. More common in the *Naviculopsis lata* Zone and *Naviculopsis navicula* Zone at Site 338 (Vøring Plateau).

Dictyocha quadria (Mandra) nov. comb.

(Plate 2, Figure 4; Plate 10, Figures 1, 2; Plate 5, Figure 9)

1969 *Hannaites quadria* Mandra, *Occ. Pap. Calif. Acad. Sci.*, no. 77, p. 3, fig. 1-7.

1975 *Hannaites quadria* Mandra, Perch-Nielsen, Initial Rept. Deep Sea Drilling Project, v. 29, p. 688, pl. 8, fig. 9, 10, 12-14.

1975b *Hannaites quadria* Mandra, Bukry, Initial Rept. Deep Sea Drilling Project, v. 29, pl. 3, fig. 1.

Remarks: As discussed earlier, "*Hannaites*" is a synonym of *Dictyocha*, and *Hannaites quadria* should be transferred to *Dictyocha quadria*, including forms with rounded corners, flattened or inflated corners. Typical is the outline of the basal ring, which is more or less concave at the connecting points with the four supporting rods of the apical bar.

Occurrence: It is present in the late Eocene *Corbisema bimucronata* Zone and *Dictyocha quadria* Zone, which can be correlated with

most of the standard nannoplankton Zone NP 17 (*Discoaster saipanensis* Zone), to most of Zone NP 20 (*Sphenolithus pseudoradians* Zone). In the present material found at Site 340, Cores 1 to 3 and 6 to 11, and Site 338, Cores 26 to 29 (Tables 1 and 3). Also known from the equatorial Pacific (DSDP 65/1-8, CC) with flattened corners, and from the southwest Pacific Ocean (Tasman Sea, DSDP Site 281, Cores 14 to 16 and DSDP Site 283, Cores 3 to 6), and the South Atlantic Ocean (*Vema* 17-107), where it was reported the first time with spherical protuberances at the corners.

***Dictyocha rotundata* Jousé**

(Plate 7, Figure 16)

1955 *Dictyocha rotundata* Jousé, Akad. Nauk. SSSR, Bot. Inst. Bot. Mater., v. 10, p. 78, fig. 2-3a.

Remarks: Very small rounded species with five or six irregular apical bars, which may be fused together like a small plate in the central part. Bars arched, counterfeiting corners on the basal ring.

Occurrence: Common in Cores 5 and 6 at Site 343 (Lofoten Basin), belonging to the *Naviculopsis minor* Zone.

***Dictyocha torta* n. sp.**

(Plate 8, Figure 7)

Description: Four-sided forms with radial spines of more or less equal length at the corners. Apical structure strongly arched and built of four apical bars. Connecting points of bars at the basal ring not in the same direction as crossing lines of bars at the top of the apical structure, resulting in an obvious curvature of bars when viewed from top or from below.

Size: of basal ring: 20-27 μm , length of radial spines: 10-12 μm .

Remarks: The curvature of apical bars distinguished this species from other forms with a cross-like apical structure like *Dictyocha medusa* and *Dictyocha deflandrei*, in which the central part of the apical structure is enlarged to an apical plate.

Occurrence: Few in the *Corbisema bimucronata* Zone (Unit C) at Site 340, and in the *Dictyocha quadria* Zone at Site 338, both from the Vøring Plateau.

Holotype: SM.B 12797.

Type locality: DSDP Site 338 (Vøring Plateau), Core 26, Section

***Dictyocha* cf. *transitoria* Deflandre**

(Plate 7, Figure 14)

1932 *Dictyocha transitoria* Deflandre, Soc. Zool. France Bull., v. 79, p. 500, fig. 32, 33.

Remarks: The specimen illustrated shows some similarity with *Dictyocha transitoria*, but the central bar in the apical structure is longer, and on one side of the basal ring a third spine, although very small, is present.

Occurrence: The only specimen was found in Sample 343-5-4, 25-26 cm (Lofoten Basin), belonging to the *Naviculopsis minor* Zone.

***Dictyocha* sp.**

(Plate 7, Figures 8, 13)

Remarks: Elongated *fibula*-like form with four spines, of which those along the long axis are distinctly longer than those along the short axis. Apical structure built by a horizontal bar and four supporting rods.

Occurrence: Rare in Sample 340-4-3, 100-101 cm from the *Naviculopsis foliacea* Zone(?).

Genus DISTEPHANUS Stöhr, 1880

***Distephanus antiquus* Glezer**

(Plate 7, Figures 17, 18)

1964 *Distephanus antiquus* Glezer, Akad. Nauk. SSSR, Novosti Sistematiki Rasteniy, Otdel. Ottisk, p. 57, pl. 2, fig. 6-9.

Remarks: Five or six short-spined, rounded forms with a large apical ring connected to the basal ring by short rods. Apical ring slightly smaller than basal ring.

Occurrence: Present in Cores 5 and 6 of Site 343 (Lofoten Basin), belonging to the *Naviculopsis minor* Zone.

***Distephanus binoculus* (Ehrenberg)**

(Plate 9, Figure 1)

1845 *Dictyocha binoculus* Ehrenberg, Ber. Akad. Wiss. Berlin 1844, p. 79.

1973 *Cannopilus binoculus* (Ehrenberg), Bukry and Foster, Initial Rept. Deep Sea Drilling Project, v. 16, p. 825, pl. 1, fig. 1, 2.

Remarks: Although this form probably is a variety of *Distephanus speculum*, it seems to be restricted to the late Neogene. Specimens found have spines on the apical ring.

Occurrence: In the present material, found in the upper part of the *Mesocena circulus* Zone at Site 348 (Icelandic Plateau).

***Distephanus boliviensis* (Frenguelli)**

(Plate 3, Figures 5, 6; Plate 5, Figure 12; Plate 9, Figure 3)

1940 *Dictyocha boliviensis* Frenguelli, Rev. Mus. La Plata, ser. 2, v. 2, p. 44, fig. 4.

1975 *Distephanus boliviensis jimlingii* Bukry, Initial Rept. Deep Sea Drilling Project, v. 32, p. 683, pl. 1, fig. 6, 7; pl. 2, fig. 1.

Remarks: Forms included here are relatively large and have an apical ring, which is subdivided to a number of small openings. The basal ring shows distinct supporting spines on its proximal side.

Occurrence: Present in Cores 6 to 8 at Site 348 (Icelandic Plateau) in the *Distephanus boliviensis* Zone, where it is especially common in the upper part of its occurrence.

***Distephanus crux* (Ehrenberg)**

(Plate 2, Figures 10-12; Plate 7, Figure 15; Plate 9, Figure 2)

1841 *Dictyocha crux* Ehrenberg, Ber. Akad. Wiss. Berlin 1840, p. 207.

1974 *Distephanus crux* (Ehrenberg), Locker, Eclog. Geol. Helv., v. 67, p. 637, Taf. 3, fig. 8, 10.

Remarks: Included here are all forms which have a more or less quadrate basal ring, four radial spines of equal length, and an apical ring supported by four rods. Since all gradients, from specimens with small apical ring to specimens with large apical ring were found, and since the size varies considerably, no subdivision into varieties or subspecies was attempted.

Occurrence: Few or rare in the *Naviculopsis foliacea* Zone (?) and *Corbisema bimucronata* Zone at Sites 338 and 340 (Vøring Plateau), common to abundant from the *Naviculopsis lata* Zone to the *Mesocena circulus* Zone at Site 338 (Vøring Plateau), and fairly common in the *Mesocena circulus* Zone, but rare in the *Distephanus boliviensis* Zone at Site 348 (Icelandic Plateau). Also present at Site 336 (Iceland-Faeroe Ridge), and Site 342 (Vøring Plateau).

***Distephanus longispinus* (Schulz)**

(Plate 8, Figure 11)

1928 *Distephanus crux* f. *longispina* Schulz, Bot. Arch, v. 21, p. 256, fig. 44.

1973 *Distephanus longispinus* (Schulz), Bukry and Foster, Initial Rept. Deep Sea Drilling Project, v. 16, p. 828, pl. 4, fig. 7, 8.

Remarks: The radial spines along the long axis are distinctly longer than those along the short axis. Otherwise, this form is similar to *Distephanus crux*.

Occurrence: Occasionally found from the *Naviculopsis lata* Zone to the lower part of the *Mesocena circulus* Zone, but only in a few samples in fair numbers. Present at Sites 338, 342 (Vøring Plateau), 345 (Mohns Ridge), and 348 (Icelandic Plateau).

***Distephanus octonarius* (Ehrenberg)**

(Plate 8, Figure 13)

1845 *Dictyocha octonaria* Ehrenberg, Ber. Akad. Wiss. Berlin 1844, p. 201.

1970 *Distephanus speculum* (Ehrenberg), Ling, Am. Paleontol. Bull., v. 58, p. 98, pl. 19, fig. 16-19.

1974 *Distephanus speculum* (Ehrenberg), Locker, Eclog. Geol. Helv., v. 67, p. 638, pl. 3, fig. 7.

Remarks: This species commonly occurs with eight, and rarely with seven or nine radial spines. It is considered by many authors as being a variant of *Distephanus speculum*. Its occurrence, however, seems to be rather restricted, and in this paper it is treated as distinct species.

Occurrence: Rare to few in Core 5 at Site 348 (Icelandic Plateau), and in Core 9 at Site 336 in the *Distephanus speculum* Zone (Iceland-Faeroe Ridge).

Distephanus quinquangellus Bukry and Foster
(Plate 3, Figure 1; Plate 9, Figure 4)

1901 *Distephanus speculum* var. *pentagonus* Lemmermann, Ber. Dtsch. Bot. Ges., v. 19, p. 264, pl. 11, fig. 19.

1973 *Distephanus quinquangellus* Bukry and Foster (nom. nov.), Initial Rept. Deep Sea Drilling Project, v. 16, p. 828, pl. 5, fig. 4.

Remarks: Pentagonal form with supporting spines on the basal ring and radial spines of equal length. Simple apical ring connected by five rods with the basal ring.

Occurrence: In the present material, frequently found from the *Naviculopsis minor* Zone to the *Naviculopsis biapiculata* Zone. A few rare occurrences were noted in the *Naviculopsis lata* Zone and *Naviculopsis navicula* Zone. Few to common in the *Mesocena circulus* Zone and lower part of the *Distephanus boliviensis* Zone. Present at Sites 336 (Iceland-Faeroe Ridge), 337 (Norway Basin), 338, 340, 341, 342 (Vøring Plateau), 343 (Lofoten Basin), 346 (Jan-Mayen Ridge), and 348 (Icelandic Plateau).

Distephanus speculum (Ehrenberg)

(Plate 3, Figures 2-4; Plate 6, Figure 1; Plate 8, Figure 12)

1840 *Dictyochoa speculum* Ehrenberg, Abh. Akad. Wiss. Berlin 1838, p. 129.

1974 *Distephanus speculum* (Ehrenberg), Locker, Eclog. Geol. Helv., v. 67, p. 638, pl. 3, fig. 1-4, 11(?).

Remarks: Included are all forms of hexagonal outline with six radial spines of equal or various length and simple apical ring connected by six rods with the basal ring. Supporting spines on the basal ring are commonly present. Specimens from the upper Miocene/Pliocene interval at Site 348 have spines on the apical ring (Plate 8, Figure 12). Forms with large apical ring and short radial spines are listed as *Distephanus antiquus*.

Occurrence: Few to common at all sites drilled in the Norwegian-Greenland Sea. This species becomes abundant in some horizons of the upper Oligocene-lower Miocene, and in the Plio/Pleistocene. However, it was not found in the *Corbisema bimucronata* Zone of Site 340, and in the *Dictyochoa quadria* Zone and *Naviculopsis biapiculata* Zone of Site 338, both Vøring Plateau. For details see Tables 1 to 5.

Genus MESOCENA Ehrenberg, 1841

Mesocena apiculata (Schulz)

(Plate 4, Figures 1, 2; Plate 6, Figure 5; Plate 11, Figures 2, 12)

1928 *Mesocena oamaruensis apiculata* Schulz, Bot. Arch., v. 21, p. 240, fig. 11.

1975b *Mesocena apiculata* (Schulz), Bukry, Initial Rept. Deep Sea Drilling Project, v. 29, p. 856, pl. 5, fig. 6-9.

Remarks: Angular or rounded three-spined rings, probably originating from *Mesocena oamaruensis* and first occurring at the base of the upper Eocene *Dictyochoa quadria* Zone. Extreme large specimens (Plate 11, Figure 12) occur in the *Naviculopsis biapiculata* Zone at Site 339.

Occurrence: Few to common from the base of the upper Eocene *Dictyochoa quadria* Zone to the middle to upper Miocene *Mesocena circulus* Zone. Present at Sites 336 (Iceland-Faeroe Ridge), 337 (Norway Basin), 338, 339, 342 (Vøring Plateau), 345 (Mohns Ridge), and 346 (Jan-Mayen Ridge).

Mesocena circulus Ehrenberg

(Plate 4, Figures 7, 8; Plate 11, Figure 4)

1841 *Dictyochoa (Mesocena) circulus* Ehrenberg, Ber. Akad. Wiss. Berlin 1840, p. 208.

1973 *Paradietyochoa circulus* (Ehrenberg), Dumitrica, Initial Rept. Deep Sea Drilling Project, v. 21, p. 853, pl. 9, fig. 7-10.

Remarks: Circular ring with two rows of short spines, the arrangement of which is best seen in the side view of the specimens illustrated on Plate 4, Figure 8. Spines may be very short in some specimens of the population.

Occurrence: Rare to few in the lower part and common in the upper part of the *Mesocena circulus* Zone (middle to late Miocene) at Sites 338, 341 (Vøring Plateau), and 348 (Icelandic Plateau).

Mesocena concava Perch-Nielsen

(Plate 11, Figure 1)

In press *Mesocena concava* Perch-Nielsen, Geol. Soc. Denmark Bull., pl. 1, fig. 11; pl. 2, fig. 9.

Remarks: A single specimen of this recently described species was found in Sample 340-7-4, 145-146 cm (Vøring Plateau) belonging to the *Corbisema bimucronata* Zone.

Mesocena diodon Ehrenberg

(Plate 4, Figure 5; Plate 11, Figures 5, 7, 11; Plate 6, Figure 7)

1845 *Mesocena diodon* Ehrenberg, Ber. Akad. Wiss. Berlin 1844, p. 84.

1974 *Bachmannocena diodon* (Ehrenberg), Locker, Eclog. Geol. Helv., v. 67, p. 636, Taf. 2, fig. 9.

Remarks: This species, commonly oval in shape and with two short spines, shows a tendency to produce aberrant specimens in certain horizons, probably indicating abnormal living conditions.

Occurrence: Ranging from about the middle part of the lower Miocene *Corbisema triacantha* Zone into the lower Pliocene *Distephanus boliviensis* Zone. Present in varying numbers at Sites 338 (Vøring Plateau) and 348 (Icelandic Plateau). Aberrant specimens are common in Sample 348-16-1, 85-86 cm (*Mesocena circulus* Zone).

Mesocena cf. diodon Ehrenberg

(Plate 11, Figure 6)

Remarks: Almost circular specimens with somewhat crenulate outline and two only very short spines are present together with good specimens of *Mesocena diodon* in Core 8 and Core 9 at Site 338 (Vøring Plateau) in the upper part of the *Corbisema triacantha* Zone.

Mesocena elliptica Ehrenberg

(Plate 4, Figures 5, 6; Plate 11, Figures 8, 9; Plate 6, Figure 6)

1841 *Dictyochoa (Mesocena) elliptica* Ehrenberg, Ber. Akad. Wiss. Berlin, 1840, p. 208.

1974 *Mesocena elliptica* Ehrenberg, Locker, Eclog. Geol. Helv., v. 67, p. 634, pl. 2, fig. 4.

Remarks: Quadrangular ring with four short spines. The older occurrences (Plate 11, Figure 9) compare well with the lectotype from Xante. Specimens from the *Mesocena circulus* Zone (Plate 11, Figure 8) are more rounded, and the four spines show a blunt termination (Plate 4, Figures 5, 6).

Occurrence: Rare occurrences were noted from the *Naviculopsis navicula* Zone to the *Mesocena circulus* Zone at Sites 338, 342 (Vøring Plateau), and 348 (Icelandic Plateau).

Mesocena cf. elliptica (Ehrenberg)

(Plate 11, Figure 10)

Remarks: A single specimen, showing relatively long spines on a rounded quadrangular ring with a distinct offset of the spines along the short axis was found in Sample 343-5-6, 35-36 cm (Lofoten Basin) in the *Naviculopsis minor* Zone.

Mesocena oamaruensis Schulz

(Plate 4, Figure 4; Plate 10, Figures 3-5)

1928 *Mesocena oamaruensis* Schulz, Bot. Arch., v. 21, p. 240, fig. 10a-b.

1975 *Mesocena oamaruensis* Schulz, Perch-Nielsen, Initial Rept. Deep Sea Drilling Project, v. 29, p. 688, pl. 10, fig. 12, 20.

Remarks: Triangular rounded ring without spines at the corners. Aberrant specimens with spherical-like protuberances were found in the *Corbisema bimucronata* Zone at Site 340, and are discussed in detail in a special section of this paper.

Occurrence: Frequently noted from the *Naviculopsis foliacea* Zone to the top of the *Corbisema bimucronata* Zone at Sites 338 and 340 (Vøring Plateau).

Mesocena cf. oamaruensis Schulz

(Plate 11, Figure 14)

1975 *Mesocena oamaruensis* Schulz, Perch-Nielsen, Initial Rept. Deep Sea Drilling Project, v. 29, p. 688, pl. 10, fig. 13.

Remarks: A single specimen, which is nearly circular and without spines, was found in Sample 343-5-3, 100-101 cm of the *Naviculopsis minor* Zone (Lofoten Basin). An identical specimen was

illustrated by Perch-Nielsen from the late Eocene of Hole 280A to the west of Tasmania.

Mesocena schulzii n. sp.
(Plate 11, Figures 3, 13)

1928 *Mesocena oamaruensis* cf. *quadrangula* Schulz, Bot. Arch., v. 21, p. 240, fig. 13.

1975 *Septamesocena* cf. *S. quadrangula* (Schulz), Perch-Nielsen, Initial Rept. Deep Sea Drilling Project, v. 29, p. 690, pl. 10, fig. 17, 18.

Description: Quadrate ring with slightly concave sides and short spines at the four corners. Septae are commonly present, net-like surface ornamentation of crests and depressions as in *Mesocena apiculata*.

Size: Diameter 75 to 160 μ m.

Remarks: The rare, but consistent, occurrence in the interval from the uppermost Eocene to the lower Miocene and its distinct shape not present in any other Miocene *Mesocena* species seem to justify the erection of a new species. Extremely large specimens were found in the *Naviculopsis biapiculata* Zone at Site 339 (Vøring Plateau).

Occurrence: Rare specimens in Samples 339-10-2, 50-51 cm (*Naviculopsis biapiculata* Zone) and 338-16-5, 50-51 cm (*Naviculopsis navicula* Zone), both from the Vøring Plateau. Originally reported from the upper Eocene of Oamaru by Schulz (1928). Also present in the late Eocene and early Miocene of Leg 29, south of New Zealand.

Holotype: SM.B 12798.

Type locality: Sample 338-16-5, 50-51 cm (Vøring Plateau).

Genus NAVICULOPSIS Frenguelli, 1940

Naviculopsis biapiculata (Lemmermann)
(Plate 12, Figure 13)

1901 *Dictyocha navicula* var. *biapiculata* Lemmermann, Ber. Dtsch. Bot. Ges., v. 19, p. 258, pl. 10, fig. 14, 15.

1975 *Naviculopsis biapiculata* (Lemmermann), Perch-Nielsen, Initial Rept. Deep Sea Drilling Project, v. 29, p. 689, pl. 12, fig. 18-22.

Remarks: Navicular form with two long spines along the long axis and a small apical bridge. The basal ring is slightly concave at the connecting points of the apical bridge.

Occurrence: In the present material, found from the *Corbisema bimucronata* Zone to the lower part of the *Naviculopsis navicula* Zone, with common occurrences in the *Naviculopsis biapiculata* Zone at Sites 338, 340 (cf.) Vøring Plateau, and 337 (Norway Basin).

Naviculopsis cf. biapiculata (Lemmermann)
(Plate 12, Figure 14)

Remarks: Included are forms which have a broader basal ring, but are otherwise identical with the nominate form. They occur in a position just prior to the first occurrence of *Naviculopsis lata* and may be regarded as transitional forms of *Naviculopsis biapiculata* to *Naviculopsis lata*.

Occurrence: Rare to few in the upper *Naviculopsis biapiculata* Zone at Site 338 (Vøring Plateau).

Naviculopsis constricta (Schulz)
(Plate 5, Figure 1; Plate 12, Figure 8)

1928 *Dictyocha navicula* var. *constricta* Schulz, Bot. Arch., v. 21, p. 245, fig. 21.

1975 *Naviculopsis constricta* (Schulz), Perch-Nielsen, Initial Rept. Deep Sea Drilling Project, v. 29, p. 689, pl. 12, fig. 16, 17, 23.

Remarks: Navicular form with long spines, and a rather broad apical bridge. Basal ring distinctly concave at the connecting points of the apical bridge.

Occurrence: Rare or few in the *Naviculopsis foliacea* Zone and *Corbisema bimucronata* Zone at Site 340, and in the *Naviculopsis biapiculata* Zone at Site 339, both Vøring Plateau.

Naviculopsis foliacea Deflandre
(Plate 12, Figure 4)

1950 *Naviculopsis foliacea* Deflandre, Microscopie, v. 2, p. 204, fig. 235-240.

1972 *Naviculopsis foliacea* Deflandre, Ling, Am. Paleontol. Bull., v. 62, p. 184, pl. 30, fig. 9-11.

Remarks: Slender navicular form with a very broad, but thin apical bridge. Closely related to *Naviculopsis sicca*.

Occurrence: Present in the *Naviculopsis minor* Zone at Site 343 (Lofoten Basin), in the *Corbisema bimucronata* Zone at Site 340 (Vøring Plateau), and rare cf. specimens in the *Naviculopsis biapiculata* Zone at Site 339 (Vøring Plateau).

Naviculopsis iberica Deflandre
(Plate 4, Figure 10; Plate 12, Figure 17)

1950 *Naviculopsis iberica* Deflandre, Microscopie, v. 2, p. 202, fig. 231-234.

1971 *Naviculopsis iberica* Deflandre, Bachmann, Verh. Geol. Bundesanst. Wien, 1971, p. 556, pl. 1, fig. 4.

Remarks: Although considered by some authors as synonym of *Naviculopsis quadratum*, this species with broad, but rounded basal ring, has a different range as the typical rectangular forms of *Naviculopsis quadratum*, and, therefore, is listed separately (compare Table 5). It is regarded as intermediate form between *Naviculopsis lata* and *Naviculopsis quadratum*.

Occurrence: Fairly frequent in the *Naviculopsis lata* Zone and lower part of the *Naviculopsis navicula* Zone at Site 338 (Vøring Plateau).

Naviculopsis lata (Deflandre)

(Plate 4, Figure 11; Plate 6, Figures 9, 10; Plate 12, Figure 15)

1932 *Dictyocha biapiculata lata* Deflandre, Soc. Géol. France Bull., v. 79, p. 500, fig. 30, 31.

1972 *Naviculopsis lata* (Deflandre), Martini, Senckenberg. Lethaea, v. 53, p. 129, fig. 1.

Remarks: Short but broad navicular form with tubular apical bridge and two relatively short spines at the ends. Transitional forms to *Naviculopsis biapiculata* are listed separately as *Naviculopsis cf. biapiculata*.

Occurrence: Few to common in the *Naviculopsis lata* Zone and lower part of the *Naviculopsis navicula* Zone at Sites 336 (Iceland-Faeroe Ridge), 338, 342 (Vøring Plateau), and 345 (Mohns Ridge).

Naviculopsis cf. minor (Schulz)
(Plate 12, Figure 12)

1928 *Dictyocha navicula* var. *minor* Schulz, Bot. Arch., v. 21, p. 246, fig. 22.

1966 *Naviculopsis biapiculata* var. *minor* (Schulz), Glezer, Cryptogamic Plants USSR, v. 7, p. 274, pl. 16, fig. 6-8; pl. 17, fig. 1-3, 6.

Remarks: Short navicular basal ring with arched and broad apical bridge. Specimens from the "lower Eocene" in Germany are more robust, but all are within the morphologic range as indicated by Glezer (1966).

Occurrence: In the present material, found as rare specimens in the lower part of Core 5 and upper part of Core 6 at Site 343 (Lofoten Basin), belonging in the *Naviculopsis minor* Zone. In northern Germany occurring in the *Dictyocha transitoria* Zone and *Naviculopsis minor* Zone of the local "lower Eocene 4," a part of which, already belongs to the middle Eocene in the international sense.

Naviculopsis navicula (Ehrenberg)
(Plate 4, Figure 9; Plate 12, Figure 16)

1840 *Dictyocha navicula* Ehrenberg, Abh. Akad. Wiss. Berlin 1838, p. 129.

1845 *Dictyocha ponticulus* Ehrenberg, Ber. Akad. Wiss. Berlin 1844, p. 267.

1972 *Naviculopsis navicula* (Ehrenberg), Martini, Senckenberg. Lethaea, v. 53, p. 120, fig. 2.

1974 *Naviculopsis navicula* (Ehrenberg), Locker, Eclog. Geol. Helv., v. 67, p. 635, pl. 2, fig. 1, 2.

Remarks: Navicular basal ring, lacking distinct spines at the ends. End of the basal ring commonly broad and flat, somewhat rectangular or rounded, with or without very small horns instead of spines. Apical bridge tubular and slightly arched.

Occurrence: Frequently found in the *Naviculopsis navicula* Zone at Sites 338, 342 (Vøring Plateau) and 345 (Mohns Ridge).

Naviculopsis ponticula Perch-Nielsen

(Plate 5, Figures 2, 3; Plate 6, Figure 8; Plate 12, Figures 1, 2)

In press *Naviculopsis ponticula* Perch-Nielsen, Geol. Soc. Denmark Bull., pl. 1, fig. 1.

Remarks: Specimens found are identical with the description and figures by Perch-Nielsen (in press), and includes navicular forms with a tubular bridge supported by two rods on each side.

Occurrence: Few to common in the *Naviculopsis foliacea* Zone (?), *Corbisema bimucronata* Zone, and lower part of the *Dictyochoa quadria* Zone at Sites 338 and 340 (Vøring Plateau).

Naviculopsis aff. ponticula Perch-Nielsen
(Plate 12, Figures 9-11)

Remarks: Forms have a rather short navicular basal ring, with two long spines and a tubular bridge connected to the basal ring by two rods on each side. The apical bridge is strongly arched. It differs from typical *Naviculopsis ponticula* by the extremely short basal ring.

Occurrence: Rare specimens in Samples 338-29-1, 113-114 cm and 340-2-1, 110-111 cm from the Vøring Plateau. Both samples belong to the same level above the mass occurrence of diatom "340" (= *Triceratium barbadense*), and are within the range of typical *Naviculopsis ponticula*.

Naviculopsis cf. ponticula Perch-Nielsen
(Plate 12, Figure 3)

Remarks: Specimens similar to *Naviculopsis ponticula*, but instead of having a tubular bridge, these specimens have a slightly arched plate connected to the basal ring by four rather broad, but thin rods. Navicular ring not as broad as in typical *Naviculopsis ponticula*.

Occurrence: In fair numbers together with typical *Naviculopsis ponticula* in the *Naviculopsis foliacea* Zone (?) and *Corbisema bimucronata* Zone at Site 340, in some samples even more common than the typical form. Also present (rare) in a few samples of the *Corbisema bimucronata* Zone at Site 338, both situated on the Vøring Plateau.

Naviculopsis quadratum (Ehrenberg)
(Plate 4, Figure 12; Plate 12, Figure 18)

1845 *Dictyochoa quadratum* Ehrenberg, Ber. Akad. Wiss. Berlin 1844, p. 267.

1928 *Dictyochoa navicula rectangulare* Schulz, Bot Arch., v. 21, p. 243, fig. 17 a, b.

1972 *Naviculopsis rectangularis* (Schulz), Martini, Senckenberg. Lethaea, v. 53, p. 120, fig. 3.

1974 *Naviculopsis quadratum* (Ehrenberg), Locker, Ecol., Geol. Helv., v. 67, p. 635, pl. 2, fig. 3.

Remarks: Typical rectangular basal ring with a short spine at each end. Apical bridge tubular and slightly arched. Not included here are rounded forms, as these have a different stratigraphic range (see *Naviculopsis iberica*).

Occurrence: Common to frequent in the upper part of the *Naviculopsis navicula* Zone at Sites 338, 342 (Vøring Plateau) and 345 (Mohns Ridge).

Naviculopsis sicca n. sp.
(Plate 12, Figures 5-7)

Description: Elongated and extreme slender form with a long spine at each end. The navicular basal ring is incorporated in the apical bridge, which is rather thin, but covers most of the space between the two spines. Only at each end of the navicular basal ring is a small opening present. Near the base of the radial spine a short supporting spine seems to be present in some specimens (Plate 12, Figure 6).

Size: Total length 100-150 μm , length of navicular basal ring 65-80 μm , width: 8-12 μm .

Remarks: Distinguished from the related *Naviculopsis foliacea* by the extreme slender form, and the very small openings near the ends of the basal body.

Occurrence: Present in fair numbers in the upper part of the *Naviculopsis foliacea* Zone (?) and in the lower part of the *Corbisema bimucronata* Zone at Site 340 and in Sample 29, CC at Site 338 (*Corbisema bimucronata* Zone) on the Vøring Plateau.

Holotype: SM.B 12799.

Type locality: Sample 340-5-1, 110-111 cm (Vøring Plateau).

Incertae Sedis or Diatoms

Genus PSEUDOROCELLA Deflandre, 1938

Pseudorocella corona Deflandre
(Plate 8, Figure 14)

1947 *Pseudorocella corona* Deflandre, Soc. Bot. France Bull., v. 93, p. 397, fig. 4.

1975b *Pseudorocella corona* Deflandre, Bukry, Initial Rept. Deep Sea Drilling Project, v. 29, p. 857, pl. 7, fig. 8, 9.

Remarks: Specimens are identical with figures and description of Deflandre (1947) and compare well with illustrations by Bukry (1975b).

Occurrence: Rare specimens occur from the *Naviculopsis lata* Zone to the *Mesocena circulus* Zone at Site 338 (Vøring Plateau).

Genus ROCELLA Hanna, 1930

Rocella gemma Hanna

1930 *Rocella gemma* Hanna, J. Paleontol., v. 4, p. 415, pl. 40, fig. 8-18.

1973 *Rocella gemma* Hanna, Dumitrica, Initial Rept. Deep Sea Drilling Project, v. 21, p. 855, pl. 11, fig. 7-12.

Remarks: A fairly common occurrence of this species was noted in the late Oligocene to early Miocene *Naviculopsis lata* Zone at Site 336 (Iceland-Faeroe Ridge), especially in Sample 336-16-2, 11-12 cm. This species is not illustrated.

REFERENCES

- Bachmann, A. and Keck, A., 1969. Die Oberflächenstruktur der Silicoflagellaten: Mikrokosmos, v. 58, p. 204-207.
- Bukry, D., 1973. Coccolith and silicoflagellate stratigraphy, Deep Sea Drilling Project Leg 18, Eastern North Pacific. In Kulm, L.D., von Huene, R., et al., Initial Reports of the Deep Sea Drilling Project, Volume 18: Washington (U.S. Government Printing Office), p. 817-831.
- , 1975a. Coccolith and silicoflagellate stratigraphy near Antarctica, Deep Sea Drilling Project, Leg 28. In Hayes, D.E., Frakes, L.A., et al., Initial Reports of the Deep Sea Drilling Project, Volume 28: Washington (U.S. Government Printing Office), p. 709-723.
- , 1975b. Silicoflagellate and coccolith stratigraphy, Deep Sea Drilling Project, Leg 29. In Kennett, J.P., Houtz, R.E., et al., Initial Reports of the Deep Sea Drilling Project, Volume 29: Washington (U.S. Government Printing Office), p. 845-872.
- Bukry, D. and Foster, J.H., 1973. Silicoflagellate and diatom stratigraphy, Leg 16, Deep Sea Drilling Project. In van Andel, T.H., Heath, G.R., et al., Initial Reports of the Deep Sea Drilling Project, Volume 16: Washington (U.S. Government Printing Office), p. 815-871.
- , 1974. Silicoflagellate zonation of Upper Cretaceous to lower Miocene deep-sea sediment: J. Res. U.S. Geol. Surv., v. 2, p. 303-310.
- Deflandre, G., 1933. Formation énigmatiques du squelette chez quelques silicoflagelles: Bull. Soc. Bot. France, v. 80, p. 809-814.
- , 1950. Contribution à l'étude des Silicoflagellidés actuels et fossiles: Microscopie, v. 2, p. 72-108.
- Dumitrica, P., 1973. Paleocene, late Oligocene and post-Oligocene silicoflagellates in Southwest Pacific sediments cored on DSDP Leg 21. In Burns, R.E., Andrews, J.E., et al., Initial Reports of the Deep Sea Drilling Project, Volume 21: Washington (U.S. Government Printing Office), p. 837-883.
- Glezer, Z.I., 1966. Silicoflagellatophyceae: Cryptogamen flora USSR (English translation, Jerusalem): v. 7, p. 1-330.

- Hanna, G.D., 1928. Silicoflagellata from Cretaceous of California: *J. Paleontol.*, v. 1, p. 259-263.
- Jerković, L., 1969. Les nouvelles recherches de la superficie du squelette des Silicoflagellidés: *God. Biol. Inst. Univ. Sarajevu*, v. 22, p. 129-176.
- Ling, H.Y., 1970. Silicoflagellates from central north Pacific core sediments: *Am. Paleontol. Bull.*, v. 58, p. 85-129.
- , 1972. Upper Cretaceous and Cenozoic silicoflagellates and Ebridians: *Am. Paleontol. Bull.*, v. 62, p. 135-229.
- , 1973. Silicoflagellates and ebridians from Leg 19: *In* Creager, J. G., Scholl, D. W., et al., Initial Reports of the Deep Sea Drilling Project, Volume 19: Washington (U.S. Government Printing Office), p. 751-775.
- Locker, S., 1974. Revision der Silicoflagellaten aus der mikrogeologischen Sammlung von L.G. Ehrenberg: *Eclog. Geol. Helv.*, v. 67, p. 631-646.
- Mandra, Y.J., 1969. A new genus of silicoflagellates from an Eocene South Atlantic deep-sea core (Protozoa: Mastigophora): *Occ. Pap. Calif. Acad. Sci.*, no. 77, p. 1-7.
- Martini, E., 1971. Standard Tertiary and Quaternary calcareous nannoplankton zonation. *In* Farinacci, A. (Ed.), *Plankt. Conf. Second Roma 1970 Proc.*: Roma, (Tecnoscienza), v. 2, p. 739-785.
- , 1972. Silicoflagellate zones in the late Oligocene and early Miocene of Europe: *Senckenberg. Lethaea*, v. 53, p. 119-122.
- , 1974. Silicoflagellate zones in the Eocene and early Oligocene: *Senckenberg. Lethaea*, v. 54, p. 527-532.
- , in press. Neogene and Quaternary silicoflagellates from the central Pacific Ocean (DSDP Leg 33). *In* Schlanger, S., Jackson, D., et al., Initial Reports of the Deep Sea Drilling Project, Volume 33: Washington (U.S. Government Printing Office).
- Perch-Nielsen, K., 1975. Late Cretaceous to Pleistocene silicoflagellates from the southern Southwest Pacific, DSDP, Leg 29. *In* Kennett, J.P., Houtz, R.E., et al., Initial Reports of the Deep Sea Drilling Project, Volume 29: Washington (U.S. Government Printing Office), p. 677-721.
- , in press. New silicoflagellates and a silicoflagellate zonation in North European Eocene diatomites: *Geol. Soc. Denmark Bull.*
- Schulz, P., 1928. Beiträge zur Kenntnis fossiler und rezenter Silicoflagellaten: *Bot. Arch.*, v. 21, p. 225-292.
- Tsumura, K., 1963. A systematic study of silicoflagellatae. *J. Yokohama Municipal Univ.*, C 45, no. 146, p. 1-84.
- Wornhardt, W.W. Jr., 1971. Eocene, Miocene and Pliocene marine diatoms and silicoflagellates studied with the electron microscope. *In* Farinacci, A. (Ed.), *Plankt. Conf. Second Roma 1970 Proc.*, Roma (Tecnoscienza), v. 2, p. 1277-1300.

PLATE 1

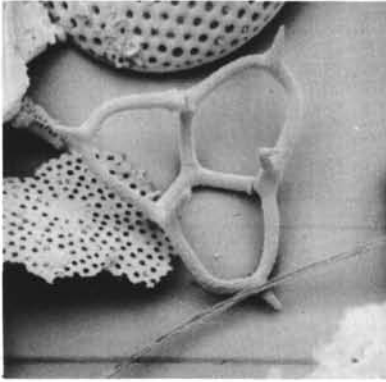
- Figure 1 *Corbisema apiculata* (Lemmermann).
Proximal side, SEM 500×;
Sample 340-7, CC;
Corbisema bimucronata Zone.
- Figure 2 *Corbisema apiculata* (Lemmermann).
Proximal side, SEM 500×;
Sample 339-12-3, 125-126 cm;
Naviculopsis biapiculata Zone.
- Figure 3 *Corbisema apiculata* (Lemmermann).
Proximal side, SEM 500×;
Sample 339-12-3, 125-126 cm;
Naviculopsis biapiculata Zone.
- Figures 4-6 *Corbisema ovalis* Perch-Nielsen.
Sample 340-7, CC;
Corbisema bimucronata Zone.
4. Proximal side, SEM 525×.
5. Distal side, SEM 475×.
6. Distal side, SEM 525×.
- Figure 7 *Corbisema flexuosa* (Stradner).
Distal side, SEM 500×;
Sample 340-11, CC;
Corbisema bimucronata Zone.
- Figures 8, 9 *Corbisema triacantha* (Ehrenberg).
Naviculopsis biapiculata Zone.
8. Distal side, SEM 1050×;
Sample 339-10-2, 55-56 cm.
9. Proximal side, SEM 950×;
Sample 339-12-3, 115-116 cm.
- Figure 10 *Corbisema hastata* (Lemmermann).
Distal side, SEM 950×;
Sample 339-10-2, 55-56 cm;
Naviculopsis biapiculata Zone.
- Figure 11 *Corbisema* sp.
Distal side, SEM 950×;
Sample 339-7, CC;
Distephanus speculum Zone (displaced material).
- Figure 12 *Corbisema* cf. *apiculata* (Lemmermann).
Distal side, SEM 450×;
Sample 339-7, CC;
Distephanus speculum Zone (displaced material).

PLATE 2

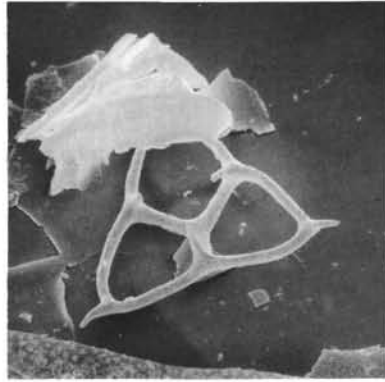
- Figures 1, 2 *Dictyocha* cf. *fibula* Ehrenberg.
Sample 348-14-1, 90-91 cm;
Mesocena circulus Zone.
1. Distal side, SEM 455×.
2. Proximal side, SEM 440×.
- Figure 3 *Dictyocha* cf. *fibula* Ehrenberg.
Distal side, SEM 550×;
Sample 340-7, CC;
Corbisema bimucronata Zone.
- Figure 4 *Dictyocha quadria* (Mandra).
Distal side, SEM 540×;
Sample 340-11, CC;
Corbisema bimucronata Zone.
- Figures 5, 6 *Dictyocha pentagona* (Schulz).
Distal sides, SEM 550×;
Sample 340-11, CC;
Corbisema bimucronata Zone.
- Figure 7 *Dictyocha hexacantha* Schulz.
Distal side, SEM 1000×;
Sample 339-10-2, 55-56 cm;
Naviculopsis biapiculata Zone.
- Figure 8 *Dictyocha challengerii* n. sp.
Distal side, SEM 225×;
Sample 339-12-3, 115-116 cm;
Naviculopsis biapiculata Zone.
- Figure 9 *Dictyocha* cf. *frenquellii* Deflandre.
Distal side, SEM 500×;
Sample 340-11, CC;
Corbisema bimucronata Zone.
- Figure 10 *Distephanus crux* (Ehrenberg).
Proximal side, SEM 500×;
Sample 340-11, CC;
Corbisema bimucronata Zone.
- Figures 11, 12 *Distephanus crux* (Ehrenberg).
Sample 348-11-2, 20-21 cm;
Mesocena circulus Zone.
11. Proximal side, SEM 550×.
12. Distal side, SEM 550×.

(see page 878)

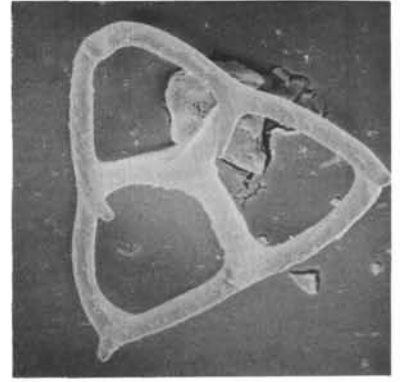
PLATE 1



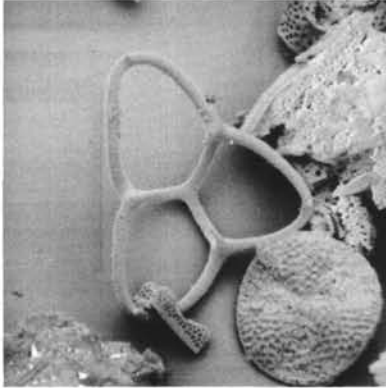
1



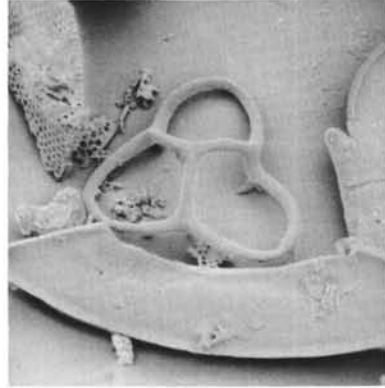
2



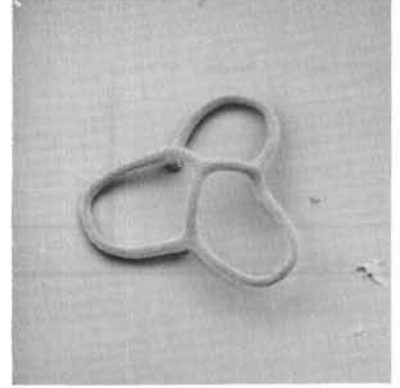
3



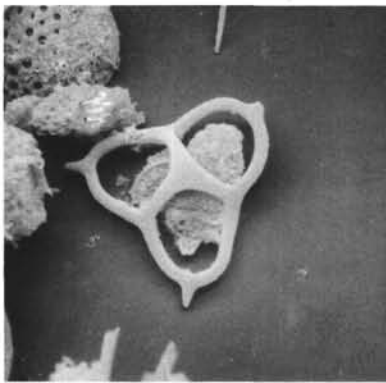
4



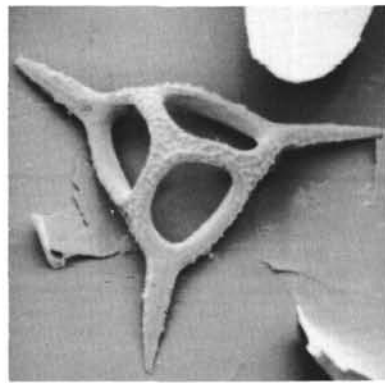
5



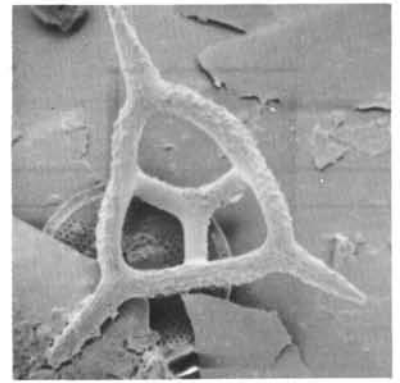
6



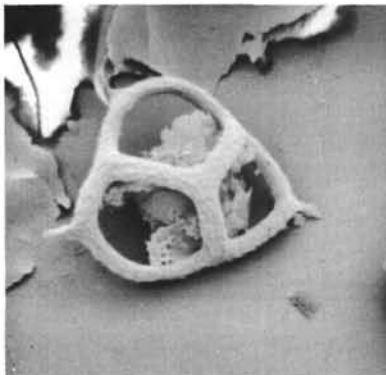
7



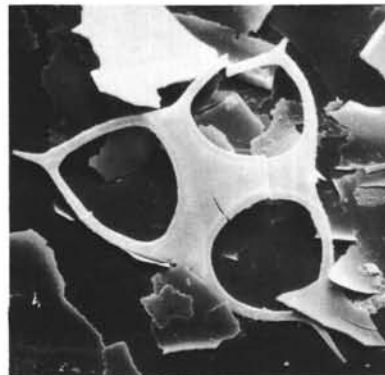
8



9



10

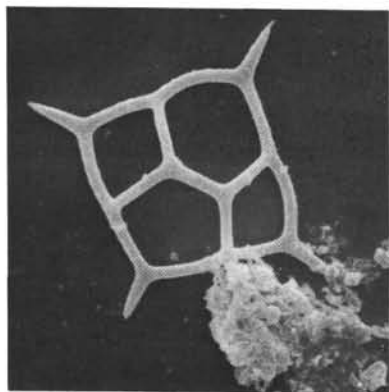


11

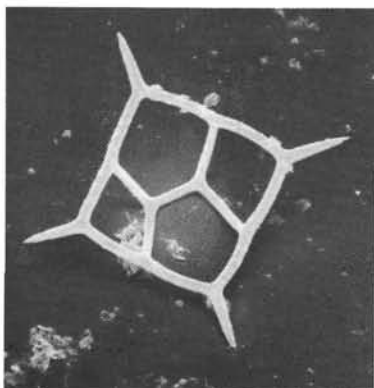


12

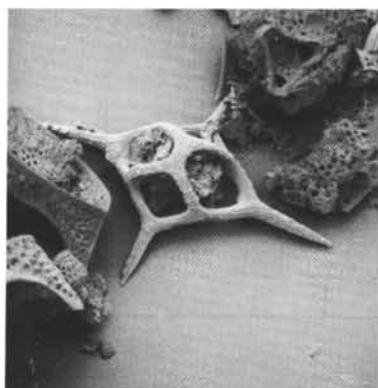
PLATE 2



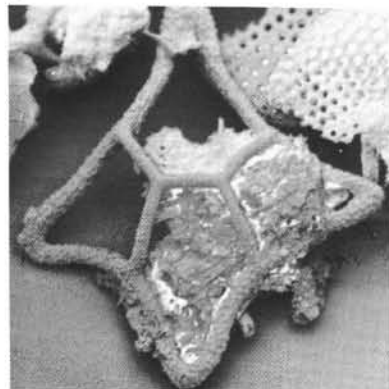
1



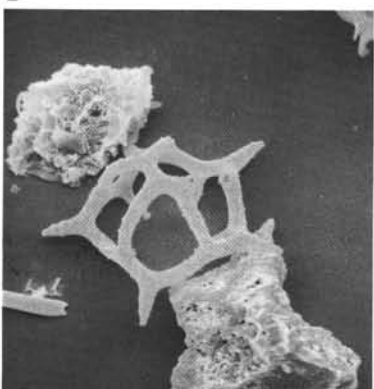
2



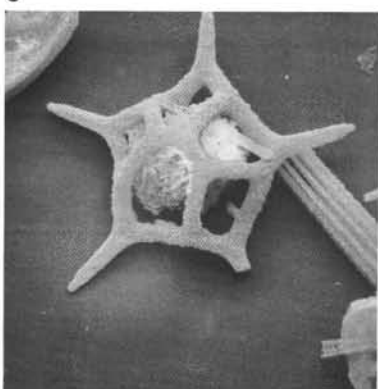
3



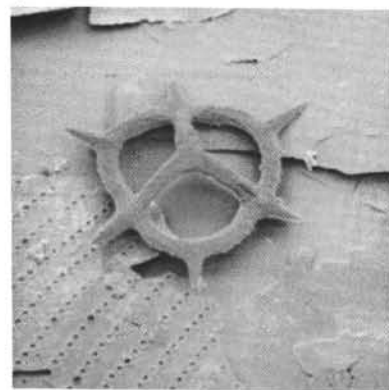
4



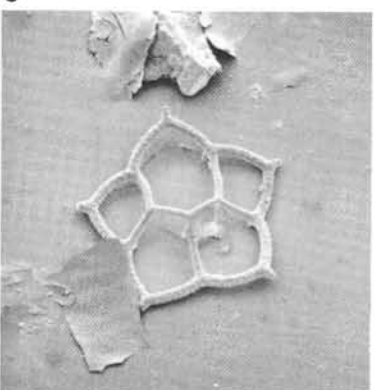
5



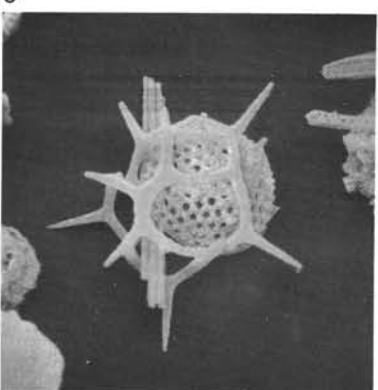
6



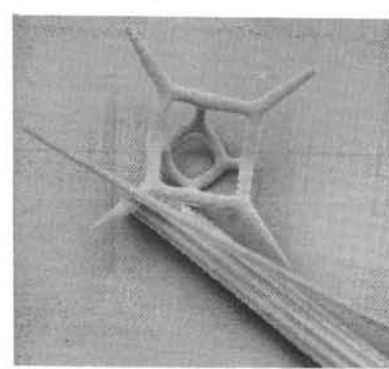
7



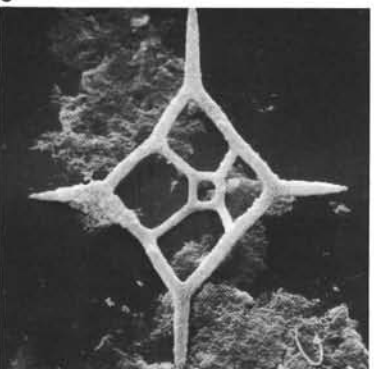
8



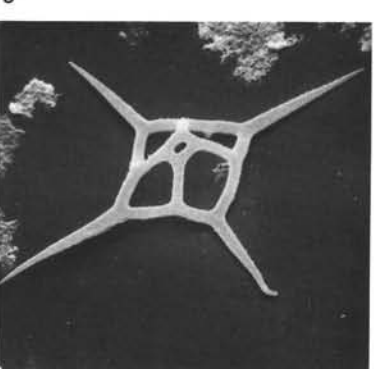
9



10



11



12

PLATE 3

- Figure 1 *Distephanus quinquangellus* Bukry and Foster.
Distal side, SEM 450×;
Sample 348-14-1, 90-91 cm;
Mesocena circulus Zone.
- Figure 2 *Distephanus speculum* (Ehrenberg).
Distal side, SEM 540×;
Sample 348-7-2, 30-31 cm;
Distephanus boliviensis Zone.
- Figure 3 *Distephanus speculum* (Ehrenberg).
Distal side, SEM 450×;
Sample 348-11-2, 85-86 cm;
Mesocena circulus Zone.
- Figure 4 *Distephanus speculum* (Ehrenberg).
Proximal side, SEM 500×;
Sample 348-11-1, 20-21 cm;
Mesocena circulus Zone.
- Figures 5, 6 *Distephanus boliviensis* (Frenguelli).
Sample 348-7-2, 30-31 cm;
Distephanus boliviensis Zone.
5. Distal side, SEM 540×.
6. Distal side, SEM 500×.
- Figure 7 *Cannopilus hemisphaericus* (Ehrenberg).
Distal side, SEM 500×;
Sample 339-10-2, 55-56 cm;
Naviculopsis biapiculata Zone.
- Figures 8-10 *Cannopilus ernestinae* Bachmann.
Sample 348-15, CC;
Mesocena circulus Zone.
8. Side view, SEM 925×.
9. Side view, SEM 950×.
10. Oblique view from below, SEM 950×.
- Figures 11, 12 *Cannopilus depressus* (Ehrenberg).
Distal sides, SEM 900×;
Mesocena circulus Zone.
11. Sample 348-15, CC.
12. Sample 348-14-1, 90-91 cm.

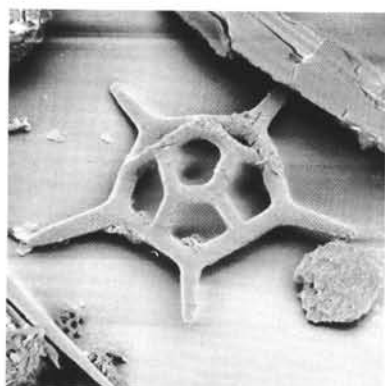
(see page 880)

PLATE 4

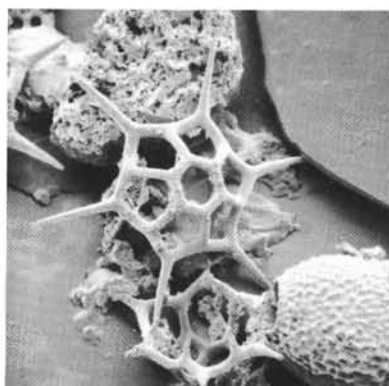
- Figure 1 *Mesocena apiculata* (Schulz).
Triangular form, SEM 550×;
Sample 339-12-3, 115-116 cm;
Naviculopsis biapiculata Zone.
- Figure 2 *Mesocena apiculata* (Schulz).
Rounded triangular form, SEM 500×;
Sample 348-15, CC;
Mesocena circulus Zone.
- Figure 3 *Mesocena oamaruensis* Schulz.
SEM 450×;
Sample 340-7, CC;
Corbisema bimucronata Zone.
- Figure 4 *Mesocena diodon* Ehrenberg.
Normal two-spined form, SEM 550×;
Sample 348-11-2, 20-21 cm;
Mesocena circulus Zone.
- Figures 5, 6 *Mesocena elliptica* Ehrenberg.
Normal four-spined form;
Mesocena circulus Zone.
5. Sample 348-11-2, 20-21 cm, SEM 550×.
6. Sample 348-11-1, 20-21 cm, SEM 500×.
- Figures 7, 8 *Mesocena circulus* Ehrenberg.
Sample 348-11-2, 20-21 cm;
Mesocena circulus Zone.
7. Flat view, SEM 550×.
8. Side view, SEM 500×.
- Figure 9 *Naviculopsis navicula* (Ehrenberg).
Distal side, SEM 550×;
Sample 338-13-3, 5-6 cm;
Naviculopsis navicula Zone.
- Figure 10 *Naviculopsis iberica* Deflandre.
Distal side, SEM 500×;
Sample 338-17, CC;
Naviculopsis navicula Zone.
- Figure 11 *Naviculopsis lata* (Deflandre).
Proximal side, SEM 500×;
Sample 338-17, CC;
Naviculopsis navicula Zone.
- Figure 12 *Naviculopsis quadratum* (Ehrenberg).
Distal side, SEM 500×;
Sample 338-13-3, 5-6 cm;
Naviculopsis navicula Zone.

(see page 881)

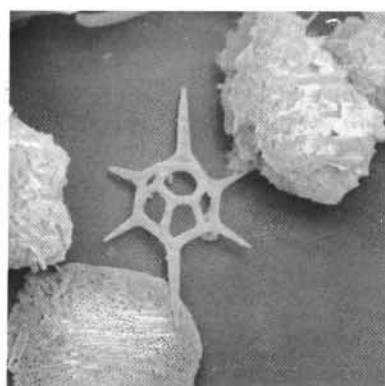
PLATE 3



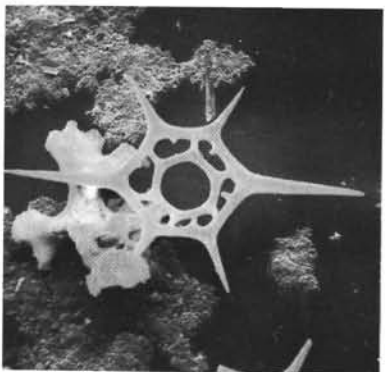
1



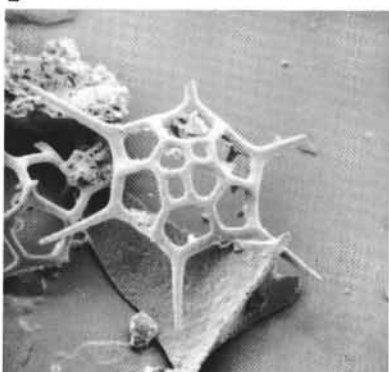
2



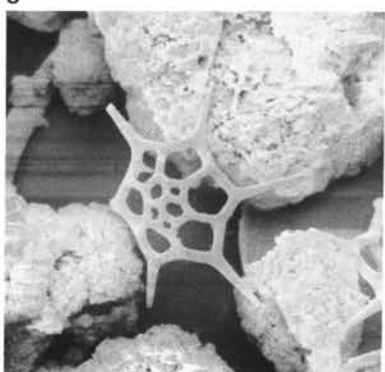
3



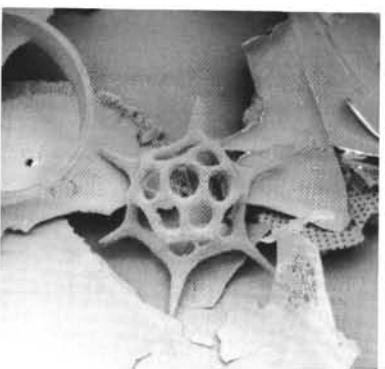
4



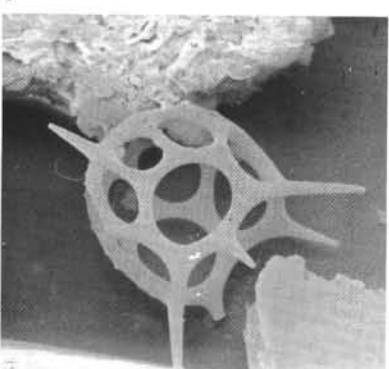
5



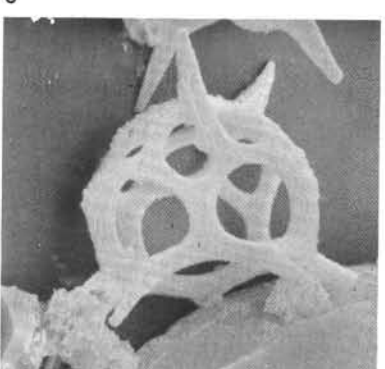
6



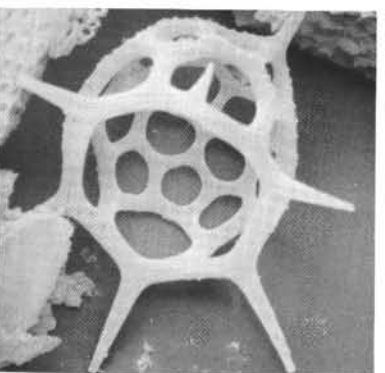
7



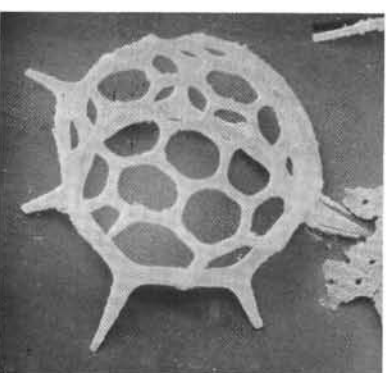
8



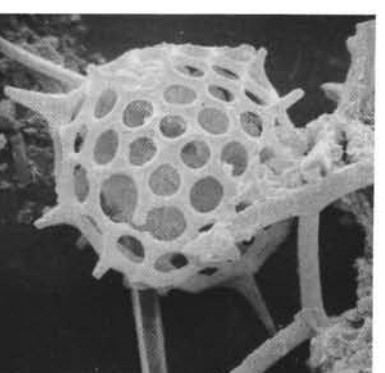
9



10

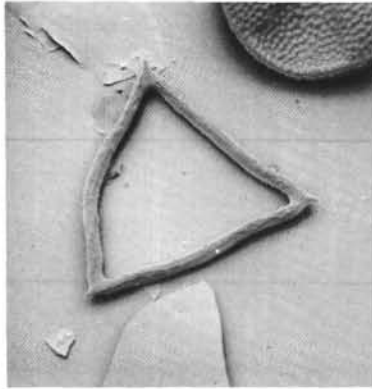


11

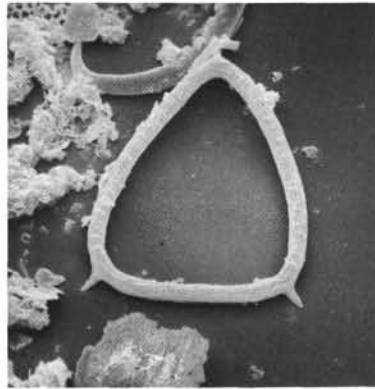


12

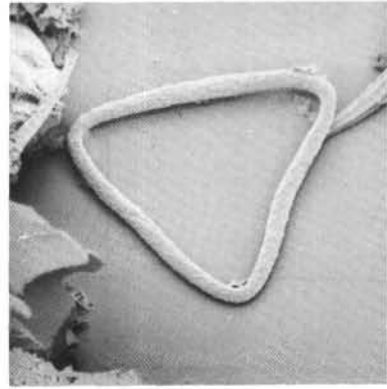
PLATE 4



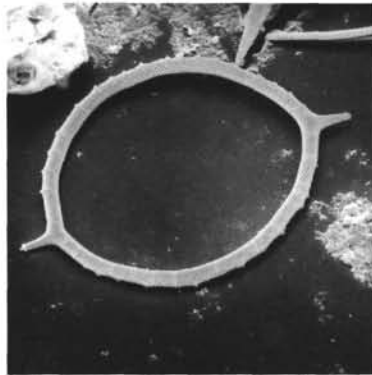
1



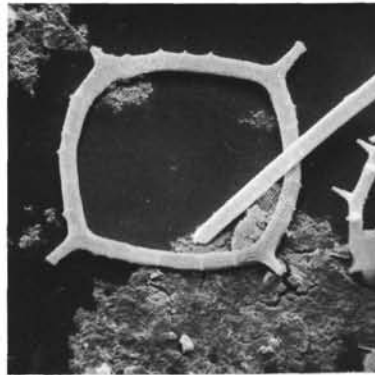
2



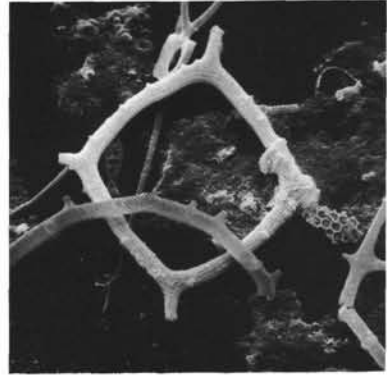
3



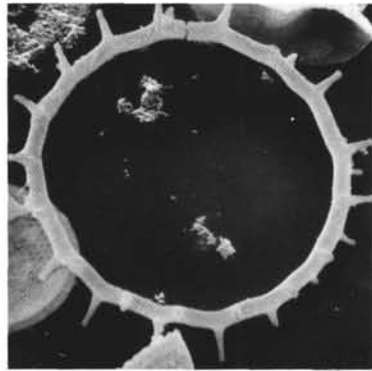
4



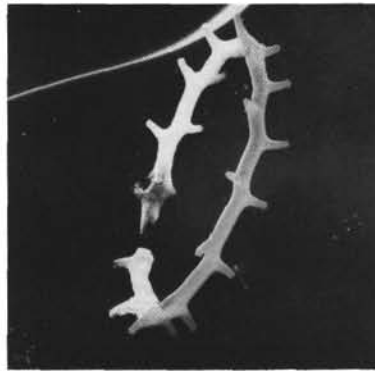
5



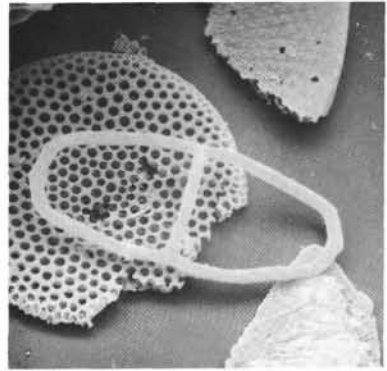
6



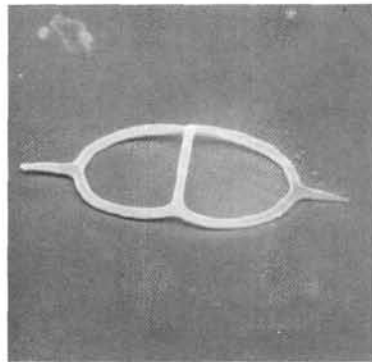
7



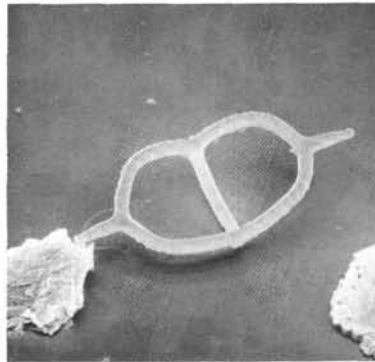
8



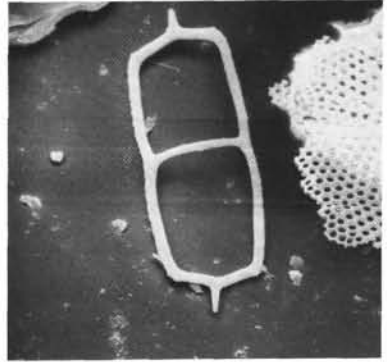
9



10



11



12

PLATE 5

- Figure 1 *Naviculopsis constricta* (Schulz).
Distal side, SEM 500×;
Sample 339-10-2, 55-56 cm;
Naviculopsis navicula Zone.
- Figures 2, 3 *Naviculopsis ponticula* Perch-Nielsen.
Sample 340-1, CC;
Corbisema bimucronata Zone.
2. Distal side, SEM 270×.
3. Side view, SEM 550×.
- Figure 4 *Corbisema apiculata* (Lemmermann).
SEM 2500×;
Sample 339-7, CC;
Distephanus speculum Zone (reworked).
- Figure 5 *Corbisema apiculata* (Lemmermann).
SEM 2550×;
Sample 340-11, CC;
Corbisema bimucronata Zone.
- Figure 6 *Corbisema* sp. SEM 2300× (see Plate 1,
Figure 11);
Sample 339-7, CC.
Distephanus speculum Zone (displaced)
- Figure 7 *Dictyocha* cf. *epidon* Ehrenberg.
SEM 2500×;
Sample 339-12-3, 125-126 cm;
Naviculopsis biapiculata Zone.
- Figure 8 *Dictyocha* cf. *fibula* Ehrenberg.
SEM 2400×;
Sample 339-12-3, 125-126 cm;
Naviculopsis biapiculata Zone.
- Figure 9 *Dictyocha quadria* (Mandra).
SEM 1000× (see Plate 2, Figure 4);
Sample 340-11, CC;
Corbisema bimucronata Zone.
- Figure 10 *Dictyocha challengerii* n. sp.
SEM 1100× (see Plate 2, Figure 8);
Sample 339-12-3, 115-116 cm;
Naviculopsis biapiculata Zone.
- Figure 11 *Dictyocha pentagona* (Schulz).
SEM 2250× (see Plate 2, Figure 5);
Sample 340-11, CC;
Corbisema bimucronata Zone.
- Figure 12 *Distephanus boliviensis* (Frenguelli).
SEM 2500× (see Plate 3, Figure 6);
Sample 348-7-2, 30-31 cm;
Distephanus boliviensis Zone.

PLATE 6

- Figure 1 *Distephanus speculum* (Ehrenberg).
Sample 348-11-2, 85-86 cm;
Mesocena circulus Zone.
a. SEM 2250×.
b. SEM 4500×.
c. SEM 4500×.
- Figures 2-4 *Cannopilus ernestinae* Bachmann.
Sample 348-15, CC;
Mesocena circulus Zone.
2. SEM 2450× (see Plate 3, Figure
10).
3. SEM 2400× (see Plate 3, Figure
9).
4. SEM 2300×.
- Figure 5 *Mesocena apiculata* (Schulz).
SEM 1000×;
Sample 339-12-3, 115-116 cm;
Naviculopsis biapiculata Zone.
- Figure 6 *Mesocena elliptica* (Schulz).
SEM 5525× (see Plate 4, Figure 6);
Sample 348-11-1, 20-21 cm;
Mesocena circulus Zone.
- Figure 7 *Mesocena diodon* Ehrenberg.
SEM 2650×;
Sample 348-11-1, 20-21 cm;
Mesocena circulus Zone.
- Figure 8 *Naviculopsis ponticula* Perch-Nielsen.
SEM 2500×;
Sample 340-11, CC;
Corbisema bimucronata Zone.
- Figures 9, 10 *Naviculopsis lata* (Deflandre).
Sample 338-17, CC;
Naviculopsis navicula Zone.
9. SEM 2500×.
10. SEM 2500× (see Plate 4, Figure
11).

(See page 884)

PLATE 5

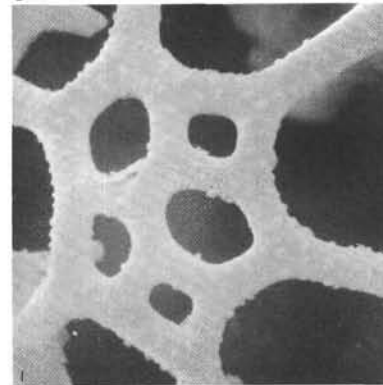
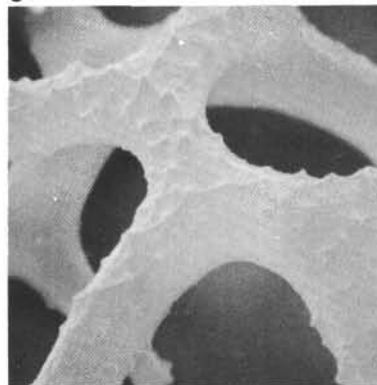
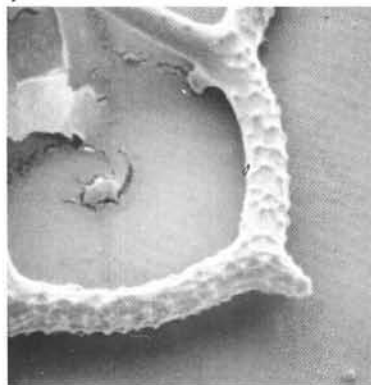
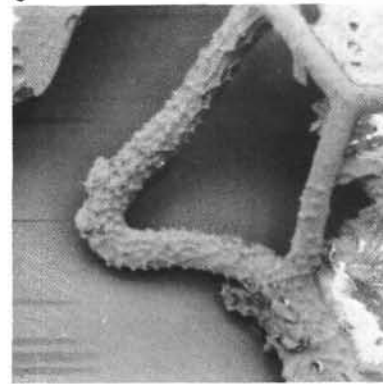
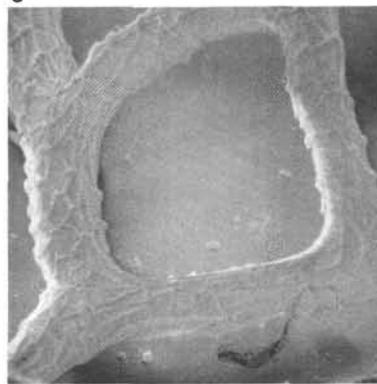
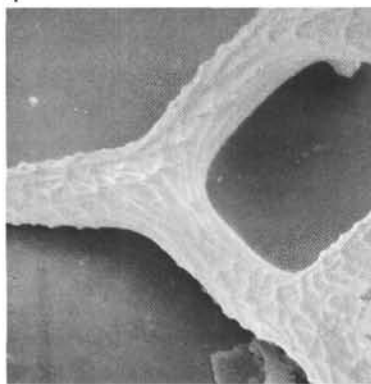
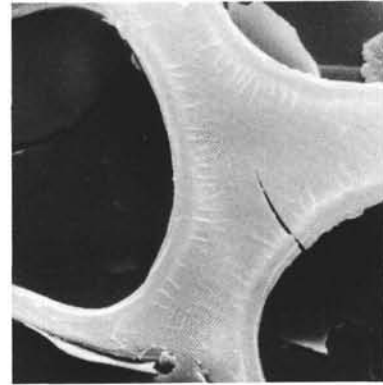
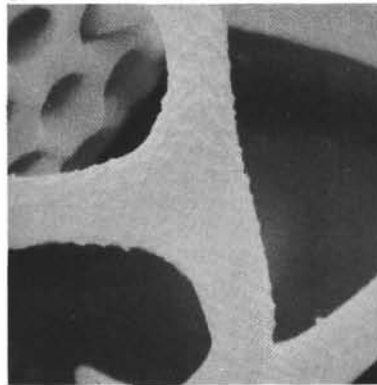
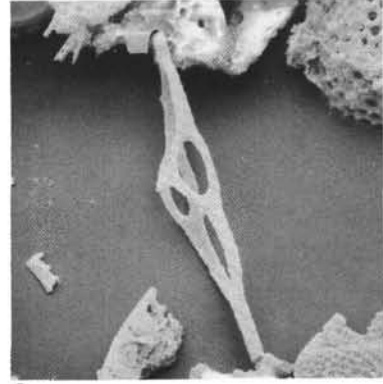
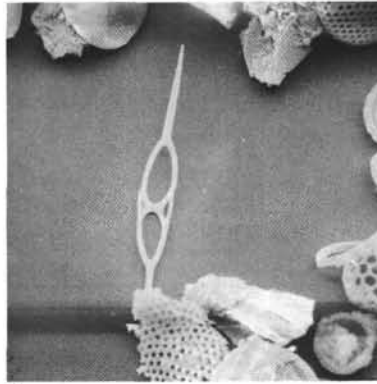
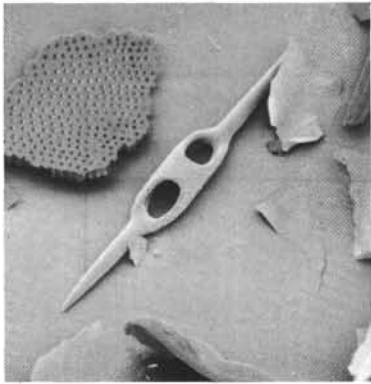
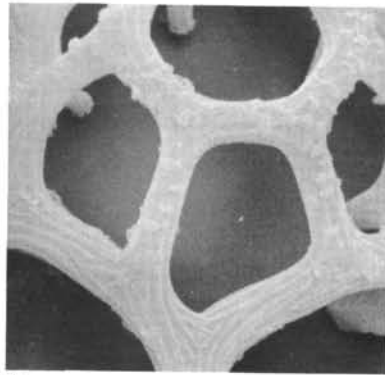
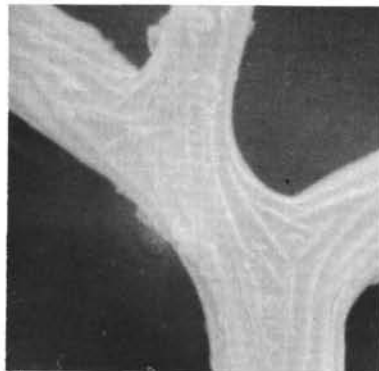


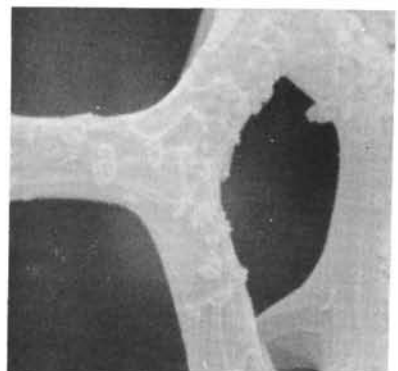
PLATE 6



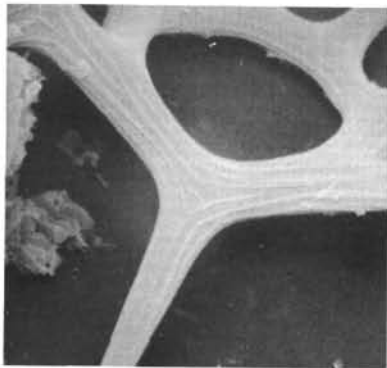
1a



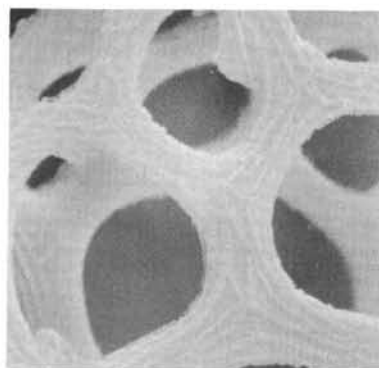
1b



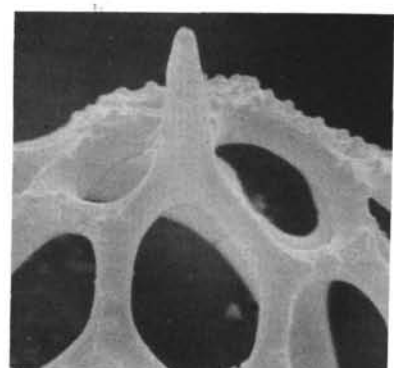
1c



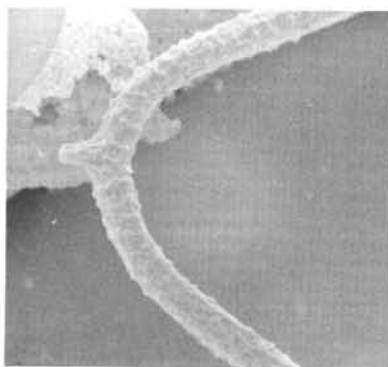
2



3



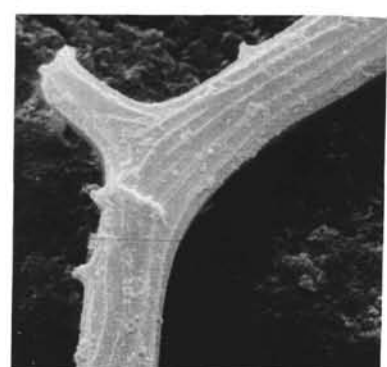
4



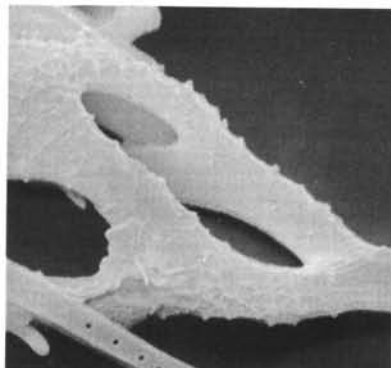
5



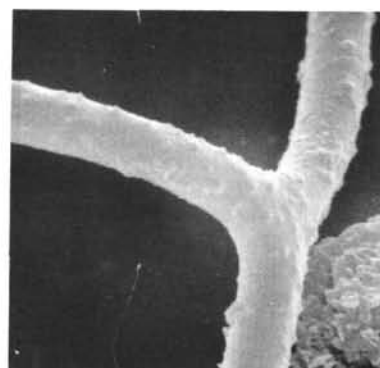
6



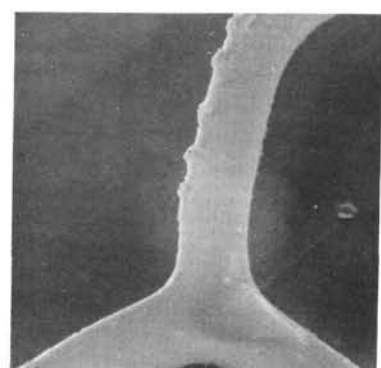
7



8



9



10

PLATE 7

(All specimens LM and except Figure 12 approximately 400×)

- | | | |
|--------------|---|--|
| Figures 1, 2 | <i>Corbisema apiculata</i> (Lemmermann).
Proximal side.
1. Sample 339-12-3, 125-126 cm;
<i>Naviculopsis biapiculata</i> Zone.
2. Sample 343-5-4, 120-121 cm;
<i>Naviculopsis minor</i> Zone. | Sample 339-12-3, 115-116 cm;
<i>Naviculopsis biapiculata</i> Zone. |
| Figures 3, 4 | <i>Corbisema ovalis</i> Perch-Nielsen.
3. Proximal side;
Sample 340-7, CC;
<i>Corbisema bimucronata</i> Zone.
4. Distal side;
Sample 340-5, CC;
<i>Naviculopsis foliacea</i> Zone (?). | Figure 11 <i>Dictyocha deflandrei</i> Frenguelli.
Proximal side;
Sample 343-5-4, 25-26 cm;
<i>Naviculopsis minor</i> Zone. |
| Figure 5 | <i>Corbisema</i> cf. <i>archangelskiana</i> (Schulz).
Proximal side;
Sample 340-7, CC;
<i>Corbisema bimucronata</i> Zone. | Figure 12 <i>Corbisema bimucronata</i> Deflandre.
Distal side, approx. 350×;
Sample 340-8, CC;
<i>Corbisema bimucronata</i> Zone. |
| Figure 6 | <i>Corbisema</i> cf. <i>flexuosa</i> (Stradner).
Distal side;
Sample 339-12-3, 125-126 cm;
<i>Naviculopsis bimucronata</i> Zone. | Figure 13 <i>Dictyocha</i> sp.
Distal side, (a) medium focus, (b) high focus;
Sample 340-4-3, 100-101 cm;
<i>Naviculopsis foliacea</i> Zone (?). |
| Figure 7 | <i>Corbisema flexuosa</i> (Stradner).
Distal side;
Sample 338-13-2, 85-86 cm;
<i>Naviculopsis navicula</i> Zone. | Figure 14 <i>Dictyocha</i> cf. <i>transitoria</i> Deflandre.
Distal side, (a) medium focus, (b) high focus;
Sample 343-5-4, 25-26 cm;
<i>Naviculopsis minor</i> Zone. |
| Figure 8 | <i>Dictyocha</i> sp.
Distal side;
Sample 340-4-3, 100-101 cm;
<i>Naviculopsis foliacea</i> Zone (?). | Figure 15 <i>Distephanus crux</i> (Ehrenberg).
Distal side;
Sample 338-15-1, 95-96 cm;
<i>Naviculopsis navicula</i> Zone. |
| Figure 9 | <i>Corbisema spinosa</i> Deflandre.
Distal side, (a) high focus, (b) medium focus;
Sample 339-10, CC;
<i>Naviculopsis biapiculata</i> Zone. | Figure 16 <i>Dictyocha rotundata</i> Jousé.
Distal side, (a) medium focus, (b) high focus;
Sample 343-5-6, 110-111 cm;
<i>Naviculopsis minor</i> Zone. |
| Figure 10 | <i>Dictyocha hexacantha</i> Schulz.
Proximal side; | Figures 17, 18 <i>Distephanus antiquus</i> Glezer.
<i>Naviculopsis minor</i> Zone.
17. Five-sided specimen, medium focus;
Sample 343-5-3, 100-101 cm.
18. Six-sided specimen, (a) medium focus, (b) high focus;
Sample 343-5-2, 125-126 cm. |

(see page 886)

PLATE 7

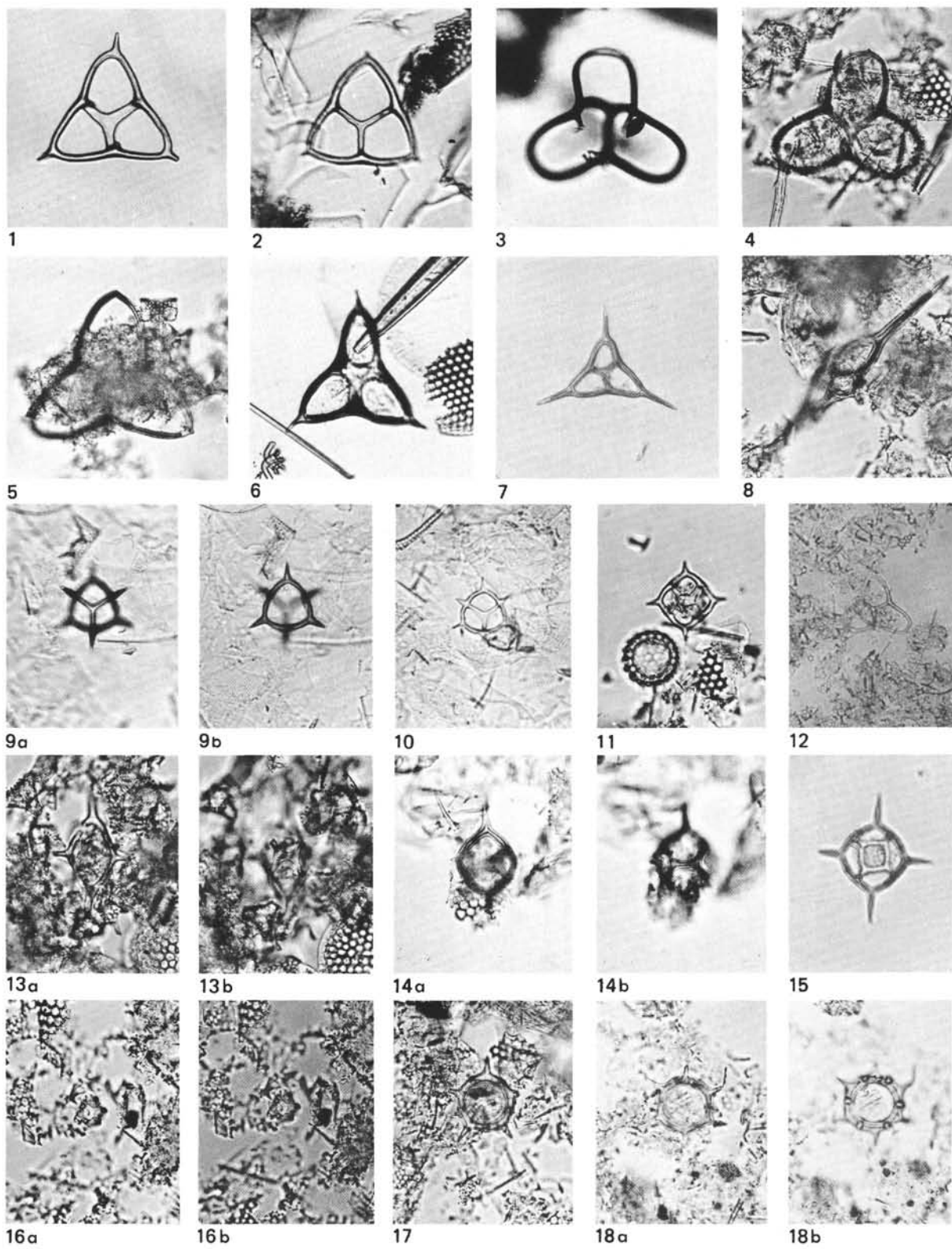


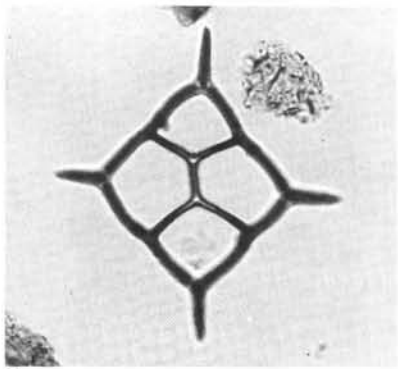
PLATE 8

(All specimens LM and except Figures 15-17 approximately 400×.)

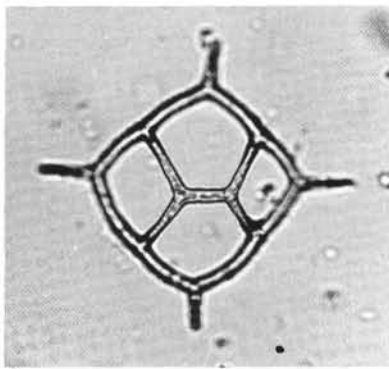
- | | | | |
|--------------|---|-----------|--|
| Figure 1 | <i>Dictyocha</i> cf. <i>epiodon</i> Ehrenberg.
Distal side;
Sample 348-14-1, 90-91 cm;
<i>Mesocena circulus</i> Zone. | Figure 10 | <i>Cannopilus</i> sp.
Side view;
Sample 338-20-2, 30-31 cm;
<i>Naviculopsis biapiculata</i> Zone. |
| Figure 2 | <i>Dictyocha</i> cf. <i>fibula</i> Ehrenberg.
Proximal side;
Sample 348-14-6, 85-86 cm;
<i>Mesocena circulus</i> Zone. | Figure 11 | <i>Distephanus longispinus</i> (Schulz).
Proximal side, (a) medium focus, (b) low focus;
Sample 338-10, CC;
<i>Corbisema triacantha</i> Zone. |
| Figure 3 | <i>Dictyocha challengerii</i> n. sp.
Holotype SM.B 12796, proximal side;
Sample 339-12-3, 125-126 cm;
<i>Naviculopsis biapiculata</i> Zone. | Figure 12 | <i>Distephanus speculum</i> (Ehrenberg).
Side view of tilted specimen;
Sample 348-6, CC;
<i>Distephanus boliviensis</i> Zone. |
| Figure 4 | <i>Dictyocha</i> cf. <i>fibula</i> Ehrenberg.
Proximal side;
Sample 339-7, CC;
<i>Distephanus speculum</i> Zone (re-worked). | Figure 13 | <i>Distephanus octonarius</i> (Ehrenberg).
Distal side;
Sample 348-5, CC;
<i>Distephanus speculum</i> Zone. |
| Figure 5 | <i>Dictyocha pentagona</i> (Schulz).
Distal side;
Sample 340-11, CC;
<i>Corbisema bimucronata</i> Zone. | Figure 14 | <i>Pseudorocella corona</i> Deflandre.
Distal side;
Sample 338-17-2, 40-41 cm;
<i>Naviculopsis navicula</i> Zone. |
| Figure 6 | <i>Dictyocha</i> sp.
Distal side;
Sample 339-10, CC;
<i>Naviculopsis biapiculata</i> Zone. | Figure 15 | <i>Dictyocha quadria</i> (Mandra).
Distal side, approx. 630×;
Sample 65/1-8, CC;
<i>Corbisema bimucronata</i> Zone. |
| Figure 7 | <i>Dictyocha torta</i> n. sp.
Holotype SM.B 12797, (a) medium focus, (b) high focus;
Sample 338-26-2, 109-110 cm;
<i>Dictyocha quadria</i> Zone. | Figure 16 | Mass occurrence of diatom 340 (= <i>Triceratium barbadense</i>), approx. 380×;
Sample 340-7, CC;
<i>Corbisema bimucronata</i> Zone. |
| Figures 8, 9 | <i>Dictyocha pentagona</i> (Schulz).
<i>Naviculopsis navicula</i> Zone.
8. Five-sided specimen;
Sample 338-17-2, 25-26 cm.
9. Six-sided specimen;
Sample 338-17-2, 135-136 cm. | Figure 17 | Mass occurrence of diatom 348 (= <i>Stephanogonia horridus</i>), approx. 380×;
Sample 348-16, CC;
<i>Mesocena circulus</i> Zone. |

(see page 888)

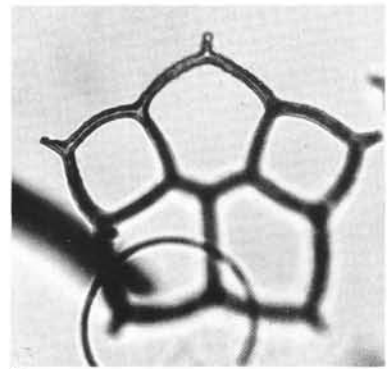
PLATE 8



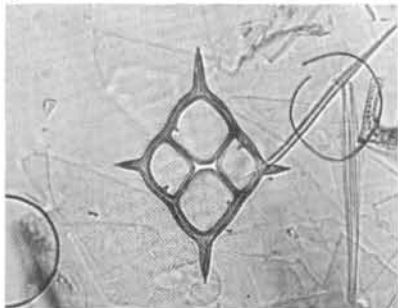
1



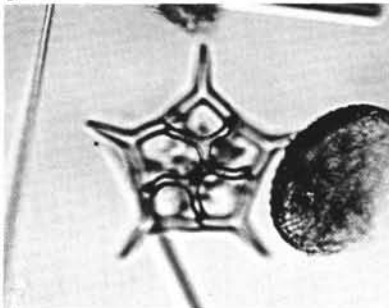
2



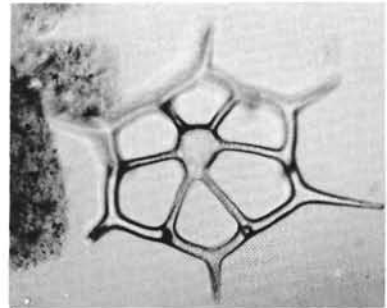
3



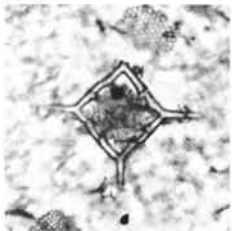
4



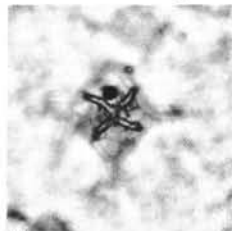
5



6



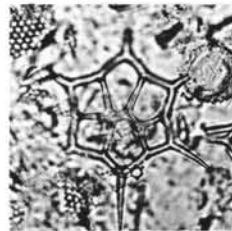
7a



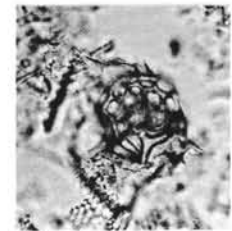
7b



8



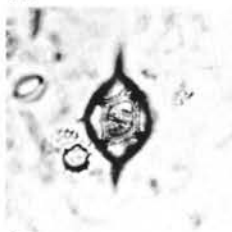
9



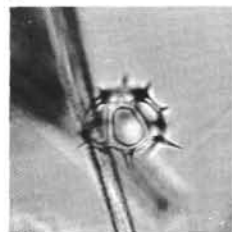
10



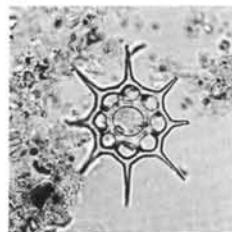
11a



11b



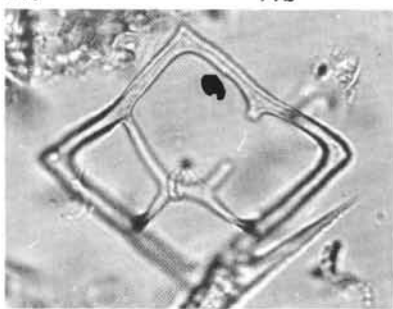
12



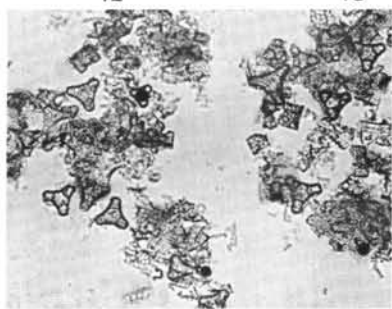
13



14



15



16



17

PLATE 9

(All specimens LM and approximately 400×.)

- Figure 1 *Distephanus binoculus* (Ehrenberg).
Distal side, (a) medium focus, (b) high focus;
Sample 348-11-1, 20-21 cm;
Mesocena circulus Zone.
- Figure 2 *Distephanus crux* (Ehrenberg).
Distal side of aberrant specimen, (a) medium focus, (b) high focus;
Sample 338-7, CC;
Mesocena circulus Zone.
- Figure 3 *Distephanus boliviensis* (Frenguelli).
Proximal side, (a) medium focus, (b) low focus;
Sample 348-6-1, 105-106 cm;
Distephanus boliviensis Zone.
- Figure 4 *Distephanus quinquangellus* Bukry and Foster.
Distal side, (a) medium focus, (b) high focus;
Sample 348-12-4, 90-91 cm;
Mesocena circulus Zone.
- Figure 5 *Cannopilus hemisphaericus* (Ehrenberg).
Distal side, (a) medium focus, (b) high focus;
Sample 338-19-4, 31-32 cm;
Naviculopsis biapiculata Zone.
- Figures 6, 7 *Cannopilus ernestinae* Bachmann.
Tilted specimens, (a) medium focus, (b) high focus;
Sample 338-7, CC;
Mesocena circulus Zone.

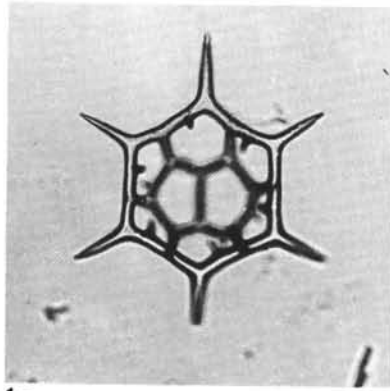
(See page 890)

PLATE 10

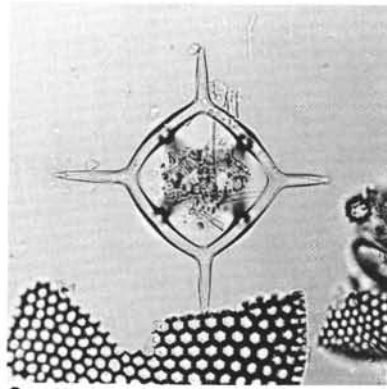
- Figure 1 *Dictyocha quadria* (Mandra).
Distal side, (a) medium focus, (b) high focus; LM 720×,
Sample 340-11, CC;
Corbisema bimucronata Zone.
- Figure 2 *Dictyocha quadria* (Mandra).
Specimen with spherical-like protuberances on each corner;
Sample 283-6, CC (Leg 29);
Dictyocha quadria Zone.
a. Total view LM 680×.
b. Left corner, medium focus, LM 1750×.
c. Left corner, high focus, LM 1750×.
- Figure 3 *Mesocena oamaruensis* Schulz.
Specimen with spherical-like protuberances on each corner;
Sample 340-9, CC,
Corbisema bimucronata Zone.
a. Total view, LM 680×.
b. Left corner, medium focus, LM 1750×.
c. Left corner, high focus, LM 1750×.
- Figures 4, 5 *Mesocena* cf. *oamaruensis* Schulz.
Spherical-like protuberances of broken specimens;
Corbisema bimucronata Zone.
4a. Medium focus, LM 400×.
4b. High focus, LM 400×; Sample 340-9, CC.
5a. Medium focus, LM 400×.
5b. High focus, LM 400×; Sample 340-11-2, 58-59 cm.

(See page 891)

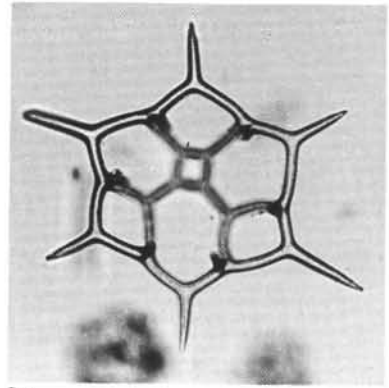
PLATE 9



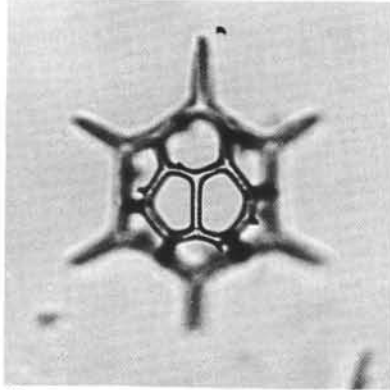
1a



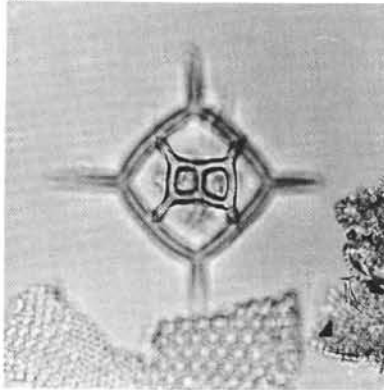
2a



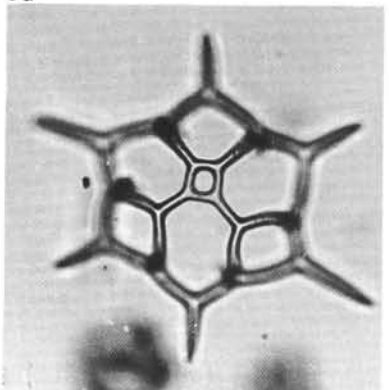
3a



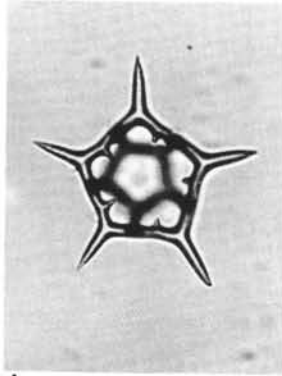
1b



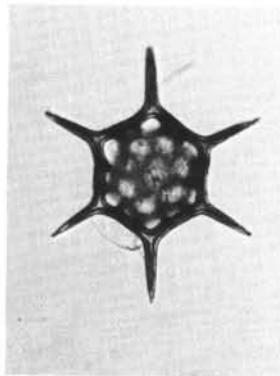
2b



3b



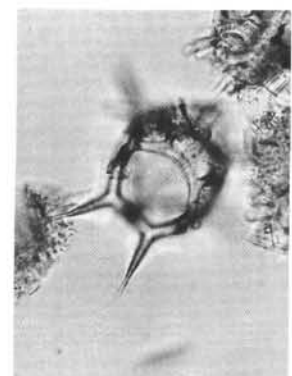
4a



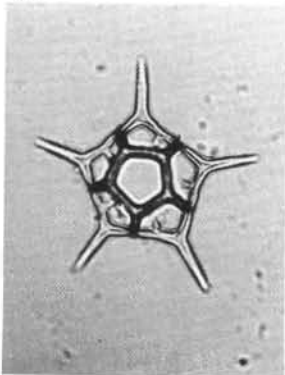
5a



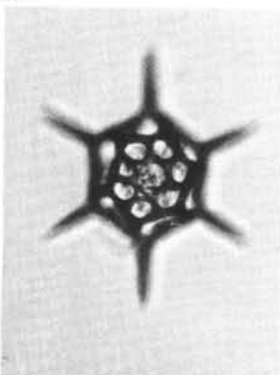
6a



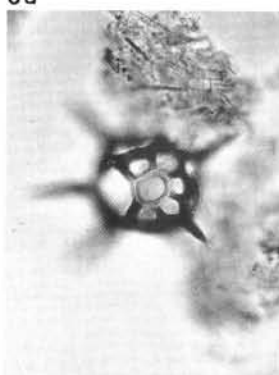
7a



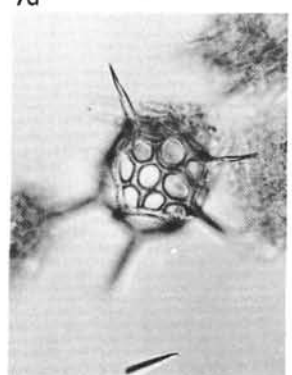
4b



5b

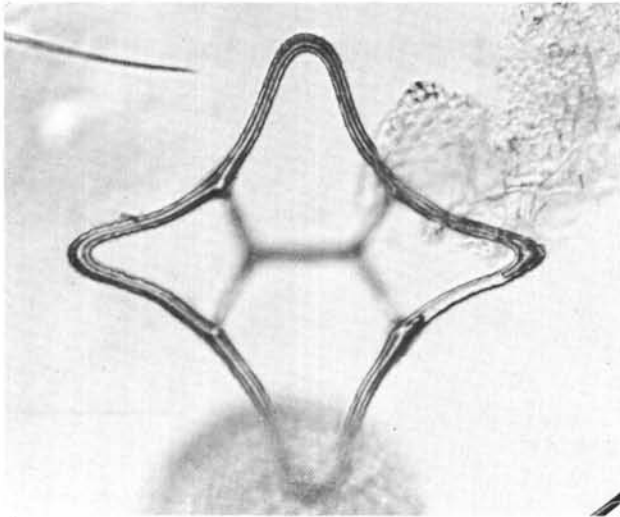


6b

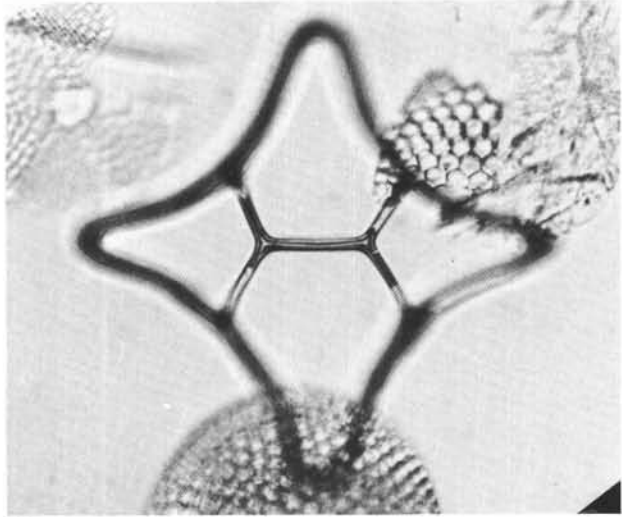


7b

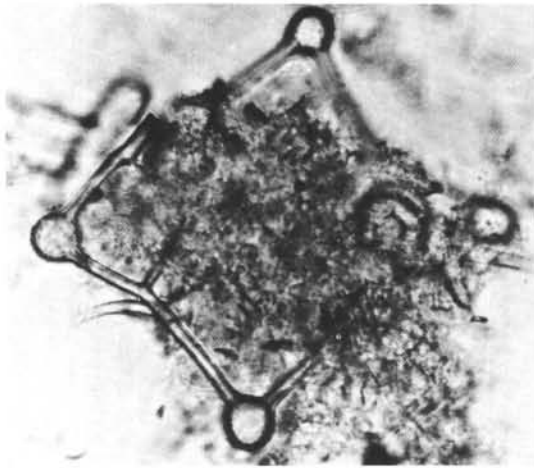
PLATE 10



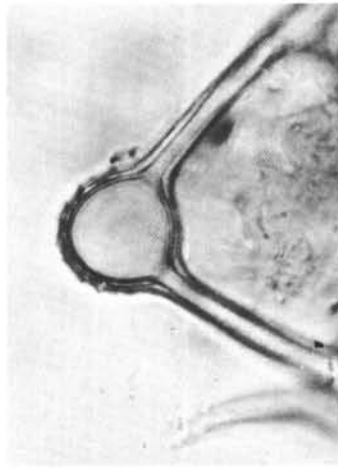
1a



1b



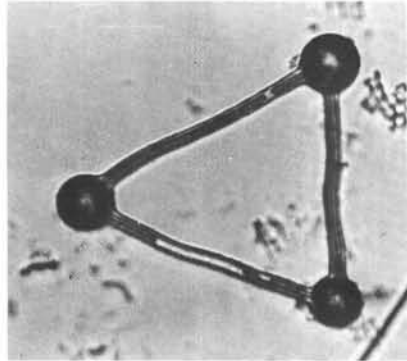
2a



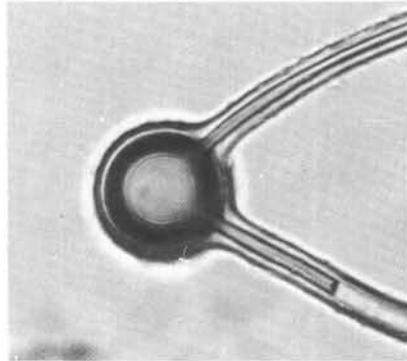
2b



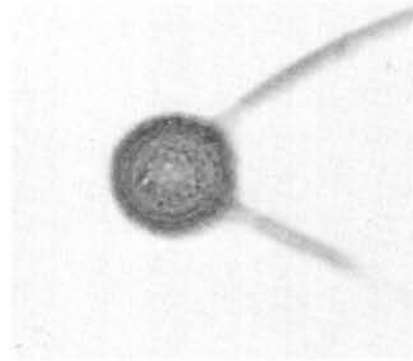
2c



3a



3b



3c



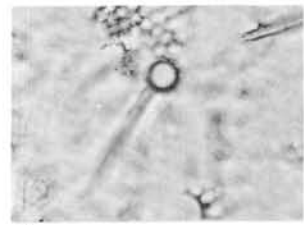
4a



4b



5a



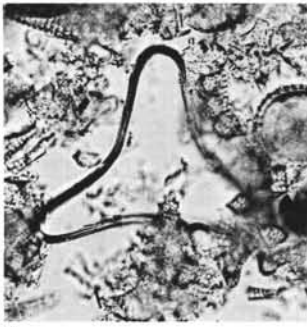
5b

PLATE 11

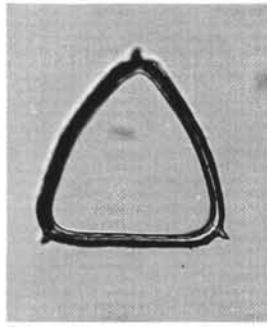
(All specimens LM, and approximately 400×.)

- Figure 1 *Mesocena concava* Perch-Nielsen.
Sample 340-7-4, 145-146 cm;
Corbisema bimucronata Zone.
- Figure 2 *Mesocena apiculata* (Schulz).
Sample 338-13-1, 125-126 cm;
Naviculopsis navicula Zone.
- Figure 3 *Mesocena schulzii* n. sp.
Holotype, SM.B 12798;
Sample 338-16-5, 50-51 cm;
Naviculopsis navicula Zone.
- Figure 4 *Mesocena circulus* Ehrenberg.
Sample 348-11-5, 140-141 cm;
Mesocena circulus Zone.
- Figure 5 *Mesocena diodon* Ehrenberg.
Aberrant specimen;
Sample 341-33-4, 130-131 cm;
Mesocena circulus Zone.
- Figure 6 *Mesocena* cf. *diodon* Ehrenberg.
Almost circular specimen with reduced spines;
Sample 338-8-4, 85-86 cm;
Corbisema triacantha Zone.
- Figure 7 *Mesocena diodon* Ehrenberg.
Aberrant specimen;
Sample 348-17, CC;
Mesocena circulus Zone.
- Figure 8 *Mesocena elliptica* Ehrenberg.
Sample 348-11-1, 20-21 cm;
Mesocena circulus Zone.
- Figure 9 *Mesocena elliptica* Ehrenberg.
Sample 338-14-3, 85-86 cm;
Naviculopsis navicula Zone.
- Figure 10 *Mesocena* cf. *elliptica* Ehrenberg.
Sample 343-5-6, 35-36 cm;
Naviculopsis minor Zone.
- Figure 11 *Mesocena diodon* Ehrenberg.
Sample 338-7, CC;
Mesocena circulus Zone.
- Figure 12 *Mesocena apiculata* (Schulz).
Sample 339-11, CC;
Naviculopsis biapiculata Zone.
- Figure 13 *Mesocena schulzii* n. sp.
Sample 399-10-2, 55-56 cm;
Naviculopsis biapiculata Zone.
- Figure 14 *Mesocena* cf. *oamaruensis* Schulz.
Sample 343-5-3, 100-101 cm;
Naviculopsis minor Zone.

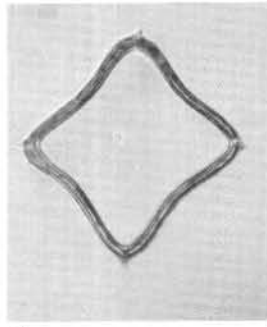
PLATE 11



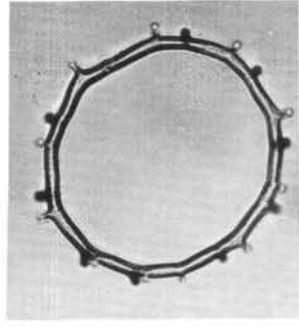
1



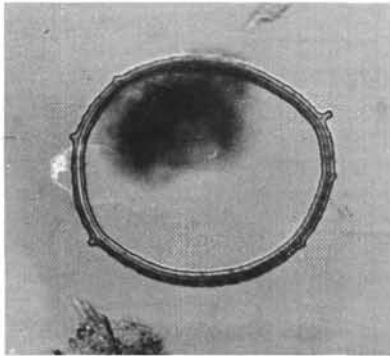
2



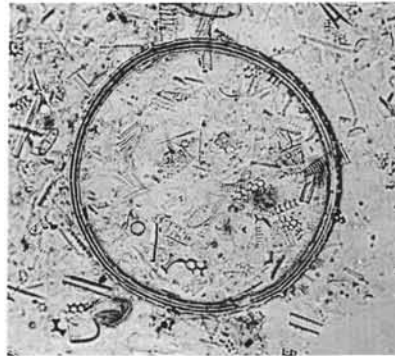
3



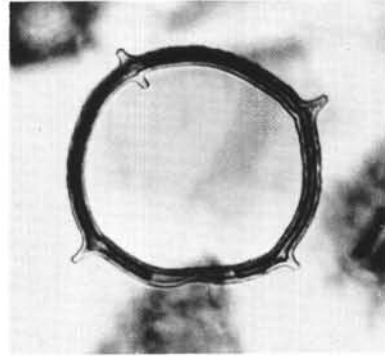
4



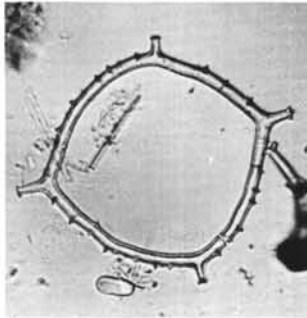
5



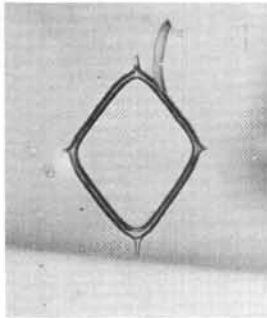
6



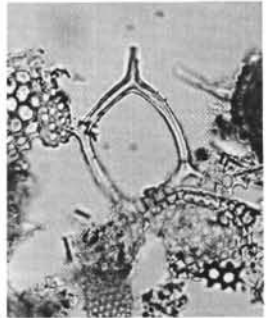
7



8



9



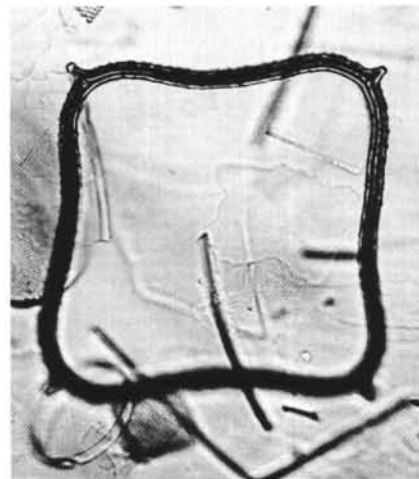
10



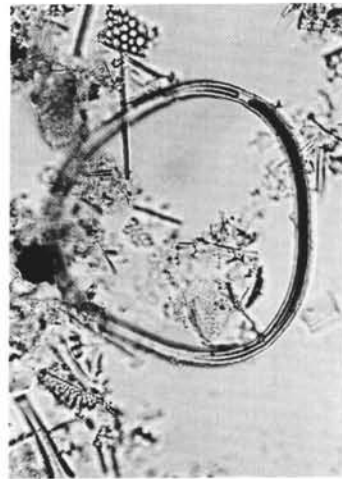
11



12



13



14

PLATE 12

(All specimens LM, approximately 400×.)

- | | | |
|--------------|--|---|
| Figures 1, 2 | <i>Naviculopsis ponticula</i> Perch-Nielsen.
Sample 340-11, CC;
<i>Corbisema bimucronata</i> Zone.
1. Distal side.
2. Side view of tilted specimen. | 9. Side view.
10. Distal view.
11. Tilted specimen. |
| Figure 3 | <i>Naviculopsis</i> cf. <i>ponticula</i> Perch-Nielsen.
Proximal side;
Sample 340-3-1, 140-141 cm;
<i>Corbisema bimucronata</i> Zone. | Figure 12 <i>Naviculopsis</i> cf. <i>minor</i> (Schulz).
Tilted specimen;
Sample 343-5-6, 110-111 cm;
<i>Naviculopsis minor</i> Zone. |
| Figure 4 | <i>Naviculopsis foliacea</i> Deflandre.
Side view of slightly tilted specimen;
Sample 340-1-4, 115-116 cm;
<i>Distephanus speculum</i> Zone (reworked). | Figure 13 <i>Naviculopsis biapiculata</i> (Lemmermann).
Distal side;
Sample 338-21-1, 67-68 cm;
<i>Naviculopsis biapiculata</i> Zone. |
| Figures 5-7 | <i>Naviculopsis sicca</i> n. sp.
5. Holotype SM.B 12799, proximal side;
Sample 340-5-1, 110-111 cm;
<i>Naviculopsis foliacea</i> Zone (?).
6. Proximal side;
Sample 340-10-2, 100-101 cm;
<i>Corbisema bimucronata</i> Zone.
7. Side view;
Sample 340-7, CC.
<i>Corbisema bimucronata</i> Zone. | Figure 14 <i>Naviculopsis</i> cf. <i>biapiculata</i> (Lemmermann).
Distal side;
Sample 338-21-1, 67-68 cm;
<i>Naviculopsis biapiculata</i> Zone. |
| Figure 8 | <i>Naviculopsis constricta</i> (Schulz),
broken specimen of <i>Naviculopsis</i> cf. <i>ponticula</i> Perch-Nielsen, and <i>Dic-tyocha</i> cf. <i>epiodon</i> Ehrenberg.
Sample 339-7, CC;
<i>Distephanus speculum</i> Zone (reworked). | Figure 15 <i>Naviculopsis lata</i> (Deflandre).
Proximal side;
Sample 338-17, CC;
<i>Naviculopsis navicula</i> Zone. |
| Figures 9-11 | <i>Naviculopsis</i> aff. <i>ponticula</i> Perch-Nielsen.
Sample 338-29-1, 113-114 cm;
<i>Corbisema bimucronata</i> Zone. | Figure 16 <i>Naviculopsis navicula</i> (Ehrenberg).
Distal side;
Sample 338-15-1, 95-96 cm;
<i>Naviculopsis navicula</i> Zone. |
| | | Figure 17 <i>Naviculopsis iberica</i> Deflandre.
Proximal side;
Sample 338-18, CC;
<i>Naviculopsis lata</i> Zone. |
| | | Figure 18 <i>Naviculopsis quadratum</i> (Ehrenberg).
Distal side;
Sample 338-13-3, 5-6 cm;
<i>Naviculopsis navicula</i> Zone. |

PLATE 12

