

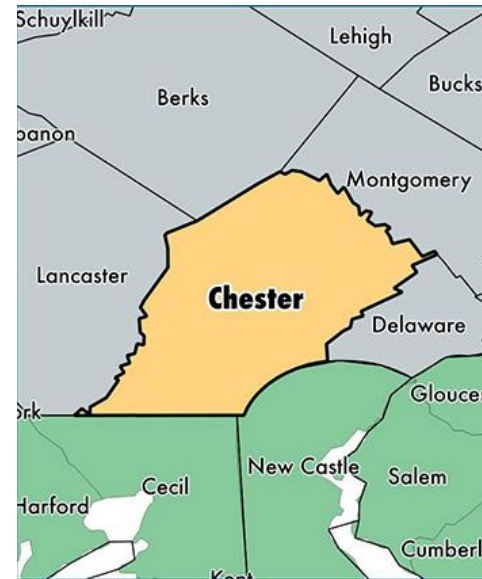


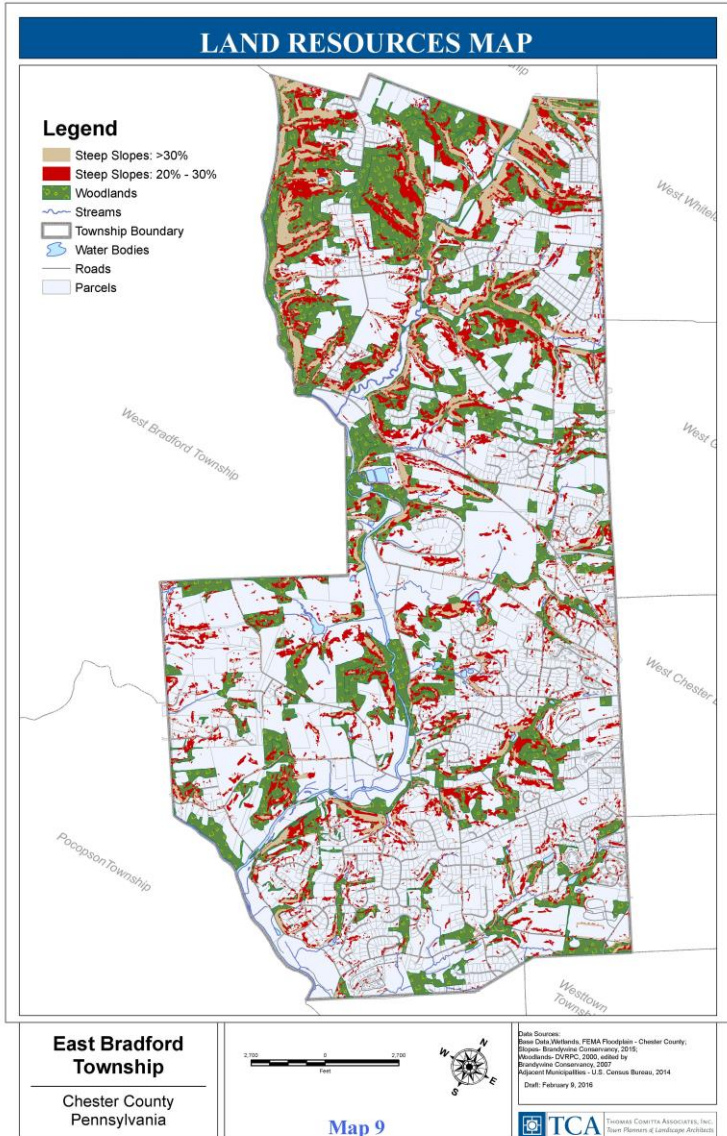
Mandie Cantlin, Assistant Township Manager  
East Bradford Township  
666 Copeland School Road  
West Chester, PA 19380  
(610) 436-5108 x102  
[mcantlin@eastbradford.org](mailto:mcantlin@eastbradford.org)

# THE OFFICIAL MAP IN EAST BRADFORD TOWNSHIP

# EAST BRADFORD TOWNSHIP

- Central Chester County
- Between Downingtown & West Chester
- 10,000 Residents
- 3,500 Housing Units
- Average Family Size 2.7 persons
- Median Home Value \$435,000
- Median Family Income \$117,000
- 1.0% Growth Rate



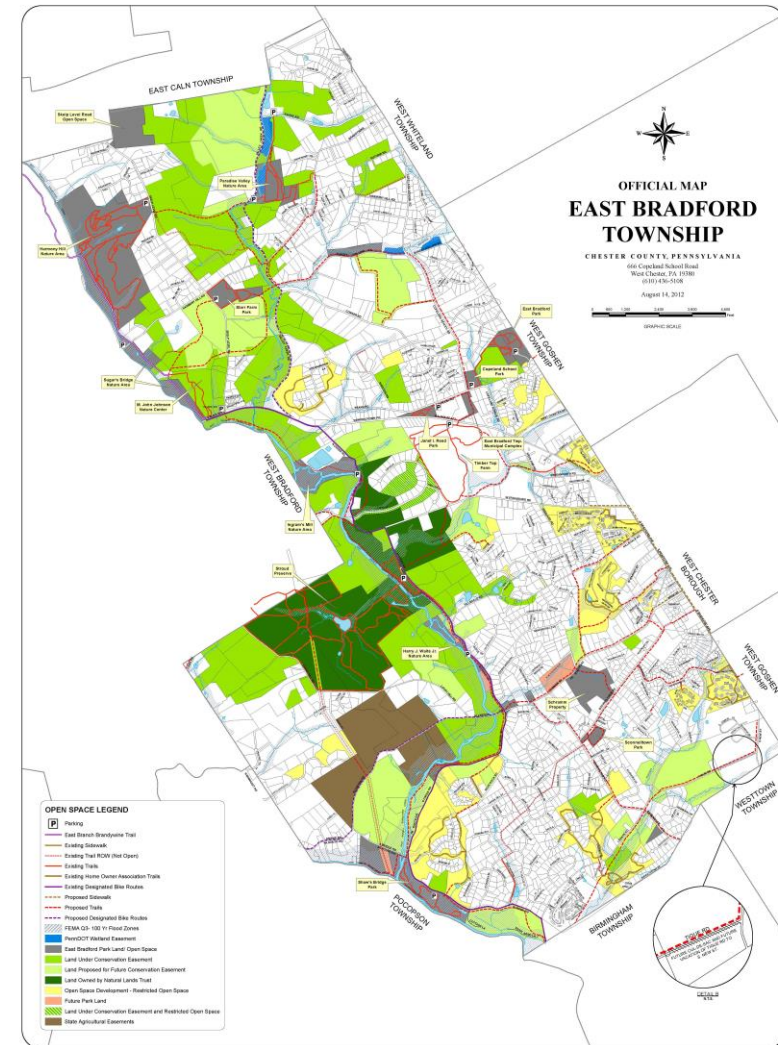


# EAST BRADFORD TOWNSHIP

- Brandywine Creek Watershed
  - 324 square miles
- East Bradford Township
  - 15.4 square miles
- Significant Features & Accomplishments
  - 3 significant waterways
  - 3,500 acres protected via restriction
  - 2,500 acres protected via regulation
  - 16 Township properties (750 ac)
  - 25 miles of public trails

# WHAT IS AN OFFICIAL MAP?

- Ordinance & Map
- Intended to Implement Vision
- Shows Future Public “Improvements”
- Communicates Intentions





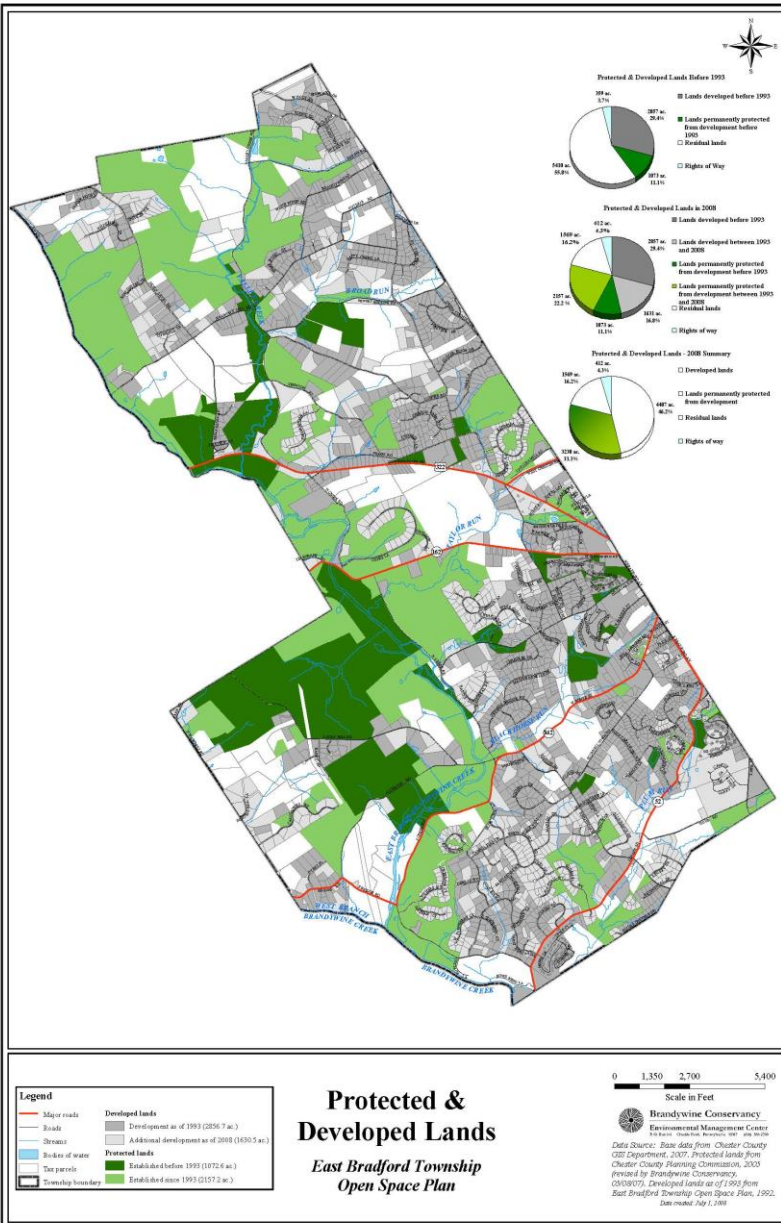
## PREPARATION & ADOPTION

- Current Comprehensive Plan
- Develop the Official Map
- Public Education & Outreach
- Adoption (MPC)

# PURPOSE & BENEFITS

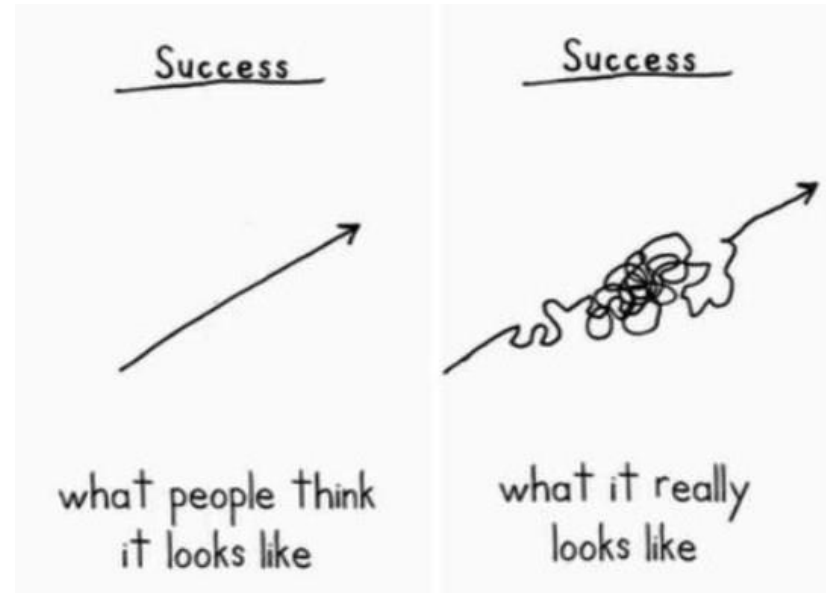
- Prioritization
- Competitive Advantage for Grants
- Strong Implementation Tool
  - Acquisition
  - Easement
  - Negotiation
  - Condemnation
- Springboard for Open Space Program
- Illustrates Accomplishments



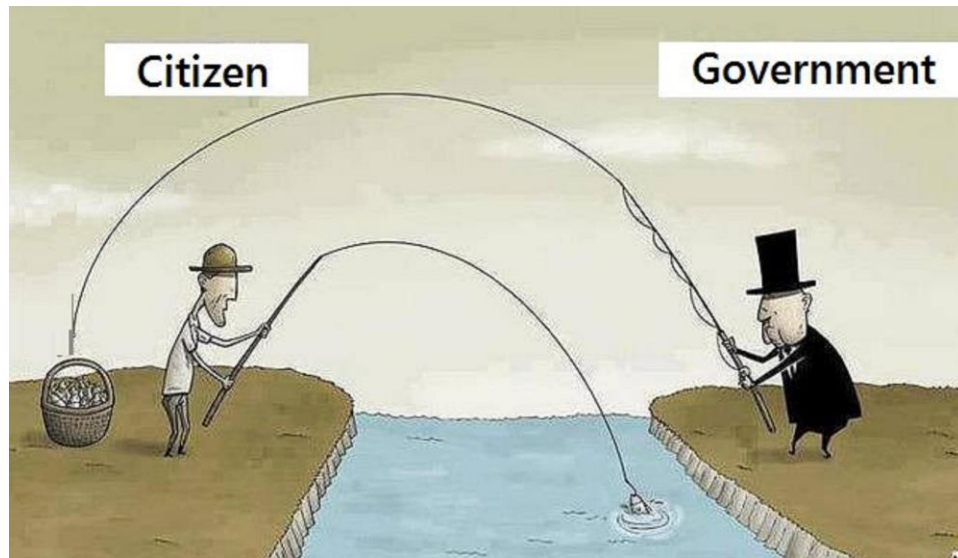


# ACCOMPLISHMENTS

- Lands Protected & Developed Since 1993



# CHALLENGES & LESSONS LEARNED



- Common Fears & Concerns
  - Map is a taking
  - Depresses values for condemnation
- Requests to Remove Property
- Request to Modify Map



# OFFICIAL MAP IN EAST BRADFORD TOWNSHIP

Mandie Cantlin, Assistant Township Manager  
East Bradford Township  
666 Copeland School Road  
West Chester, PA 19380  
(610) 436-5108 x102  
mcantlin@eastbradford.org

