

Marine Life of Nelson Bay

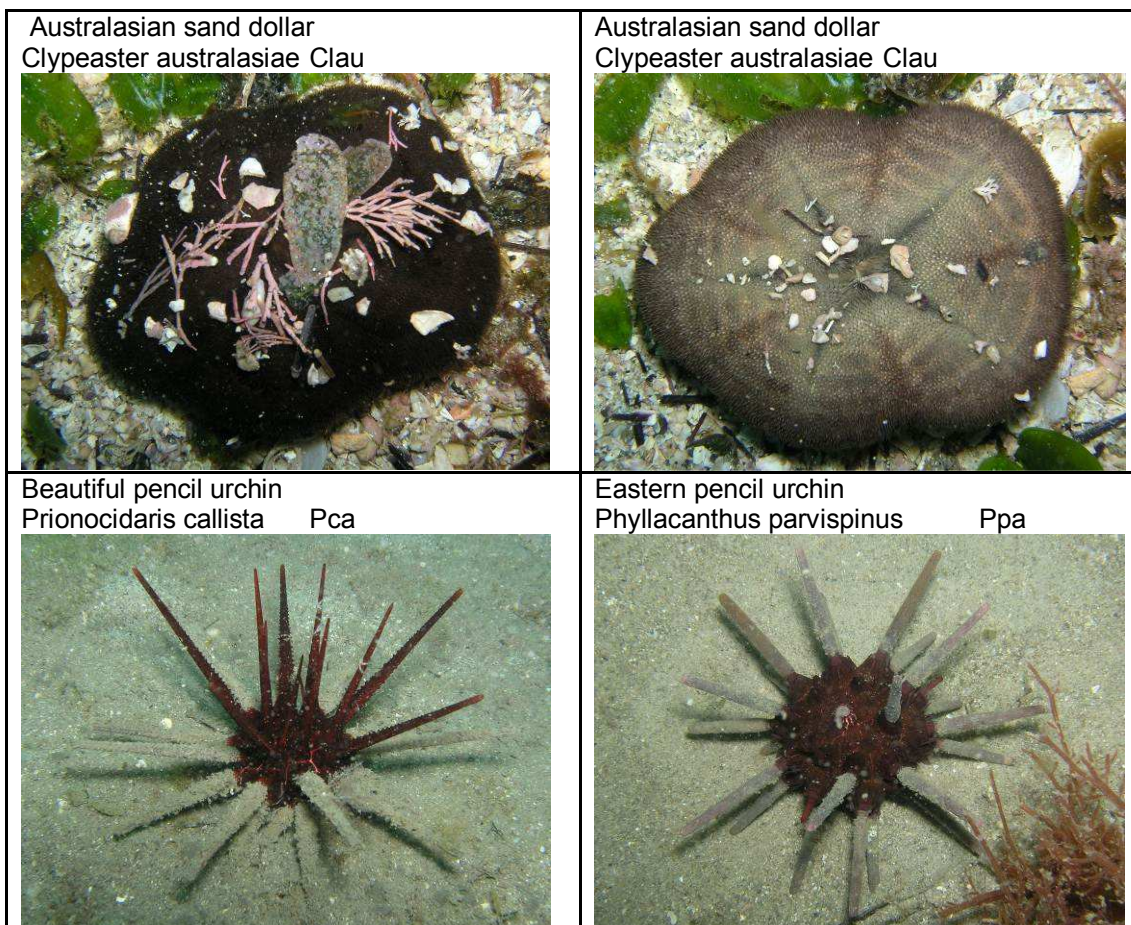
By Tom Davis

1 Urchin Species

Sea urchins are spiny skinned animals that belong to the Phylum Echinodermata. Their bodies are generally made up of five parts, with radial symmetry, and they move around on tube feet.

Common name	Latin name	RLS code
Australasian sand dollar	<i>Clypeaster australasiae</i>	Clau
Beautiful pencil urchin	<i>Prionocidaris callista</i>	Pca
Eastern pencil urchin	<i>Phyllacanthus parvispinus</i>	Ppa
Encrusted pencil urchin	<i>Goniocidaris tubaria</i>	Gtu
Raspy pencil urchin	<i>Prionocidaris baculosa</i>	
Blood diadem urchin	<i>Diadema palmeri</i>	Dpa
Diadem urchin	<i>Diadema savignyi</i>	Dsa
Long-spine urchin	<i>Centrostephanus rogersii</i>	Cro
Common urchin	<i>Heliocidaris erythrogramma</i>	Her
Tuberculate urchin	<i>Heliocidaris tuberculata</i>	Htu
Bell's urchin	<i>Salmacis belli</i>	
Eastern egg urchin	<i>Holopneustes purpurascens</i>	Hpu
Embossed sea urchin	<i>Temnopleurus toreumaticus</i>	
Indian sea urchin	<i>Pseudoboletia indiana</i>	Pin
Lamington urchin	<i>Tripneustes gratilla</i>	Tgr
Round urchin	<i>Salmacis sphaeroides</i>	
Seagrass egg urchin	<i>Amblypneustes spp.</i>	Amb

Table 1: Sea Cucumber Species



Encrusted pencil urchin
Goniocidaris tubaria Gtu



Raspy pencil urchin
Prionocidaris baculosa



Blood diadem urchin
Diadema palmeri Dpa



Diadem urchin
Diadema savignyi Dsa



Long-spine urchin
Centrostephanus rodgersii Cro



Common urchin
Heliocidaris erythrogramma Her



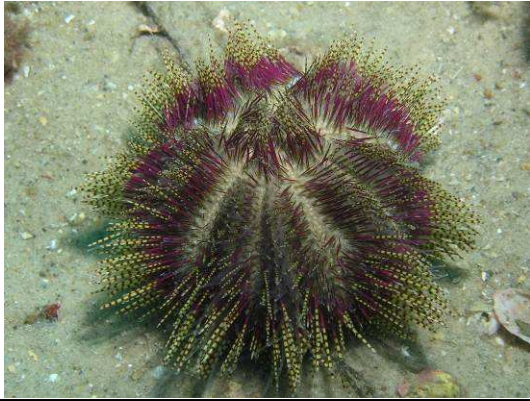
Common urchin
Heliocidaris erythrogramma Her



Tuberculate urchin
Heliocidaris tuberculata Htu



Bell's urchin
Salmacis belli



Eastern egg urchin
Holopneustes purpurascens Hpu



Embossed sea urchin
Temnopleurus toreumaticus



Indian sea urchin
Pseudoboletia indiana Pin



Lamington urchin
Tripneustes gratilla Tgr



Round urchin
Salmacis sphaeroides



Seagrass egg urchin
Amblypneustes spp. Amb

