

Home Server TS mini

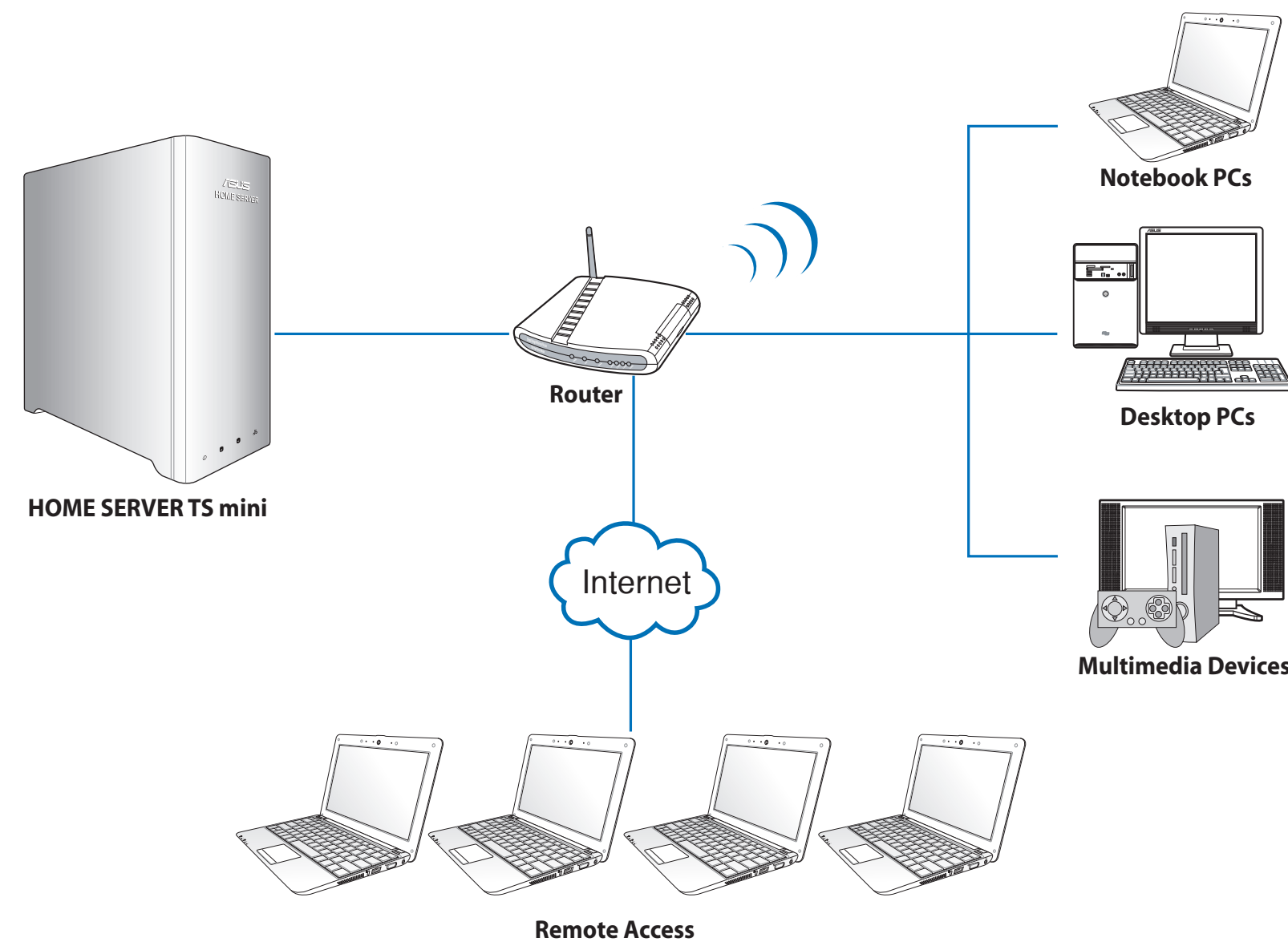
E5046



Quick Start Guide

15G065278000

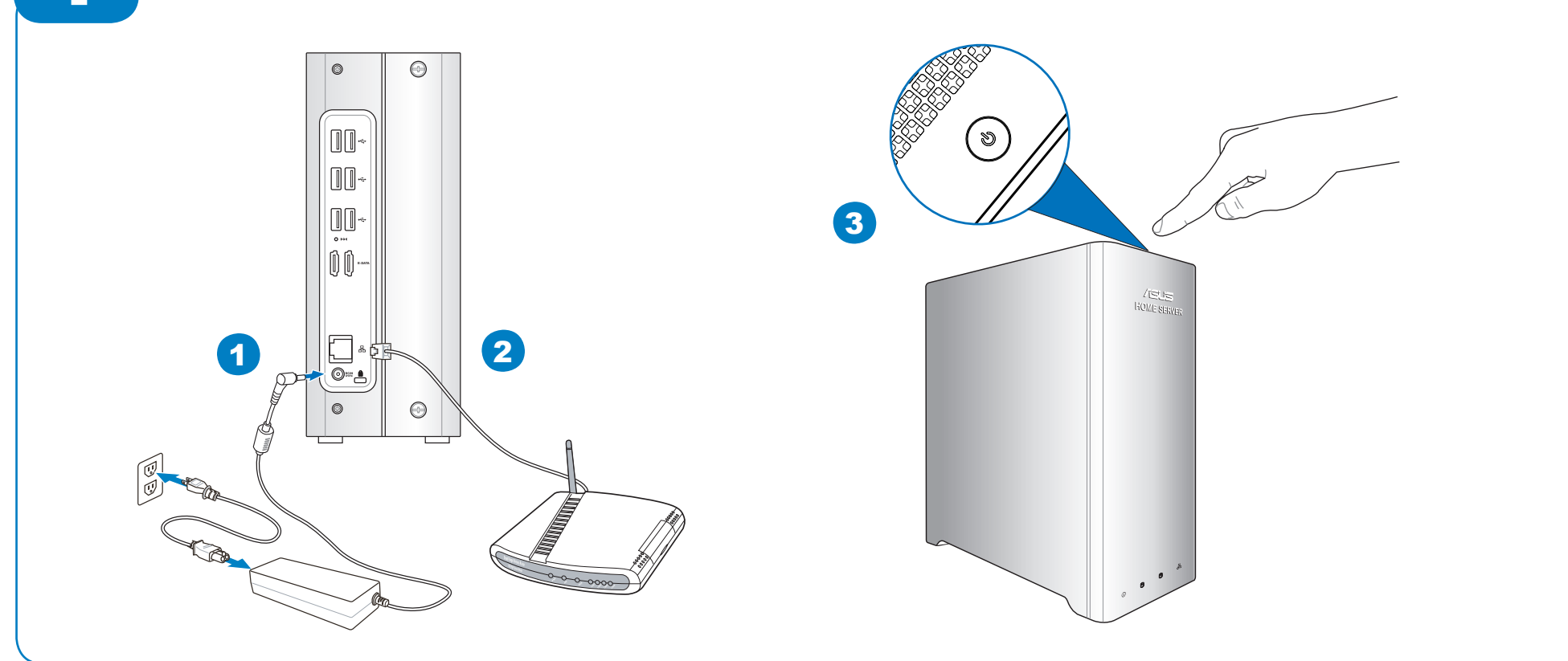
Home network scenario



Package contents

TS mini	AC adapter	Power cord
RJ45 LAN cable	Software Installation CD	Recovery DVD
Restore CD	User manual	Quick Start Guide
HDD screws package	Warranty card	

1 Setting up your TS mini



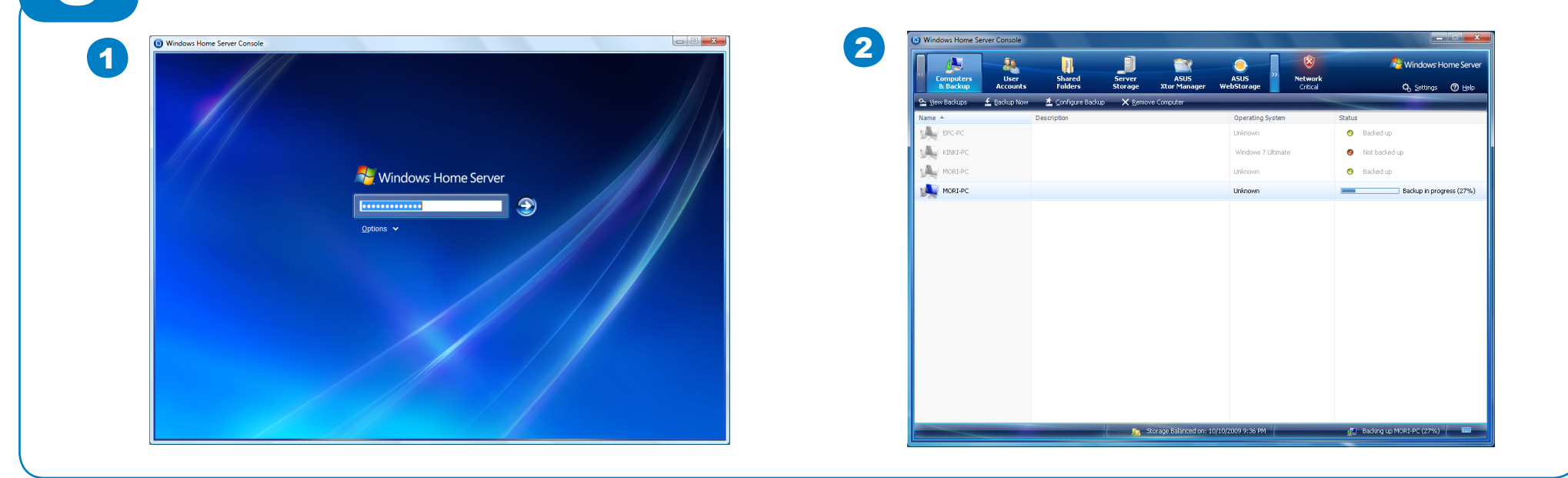
1. Connect the supplied power cord to the supplied AC adapter. Then, plug the AC adapter to the **DC IN** jack on the TS mini rear panel and the power cord to an electrical outlet.
 2. Connect one end of a network cable to the **LAN** port on the server rear panel, and the other end to your broadband router.
- You must use a network cable to connect the TS mini to your broadband router. Wireless connection to your broadband router is not supported. However, after you connect your server to your home network, home computers can connect to your server through wireless connection.
3. Press the power switch on the top panel to turn on the TS mini.

2 Installing the Software on Your First Computer



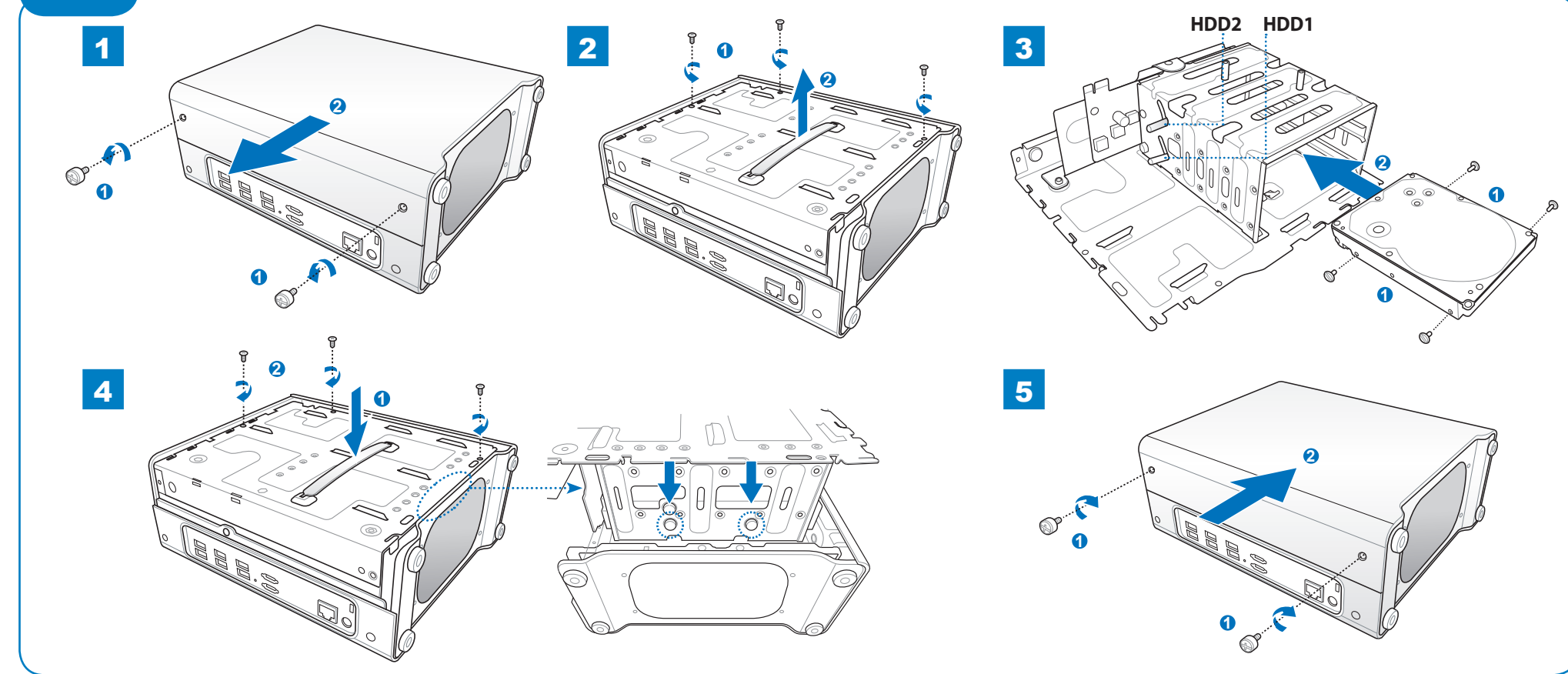
1. Insert the Software Installation CD into the computer that is connected to your home network. The Windows Home Server Connector wizard starts.
- If Autorun is NOT enabled in your computer, browse the contents of the Software Installation CD to locate the **Install.exe** file. Double-click the **Install.exe** to run the Connector wizard.
2. Click Next, and then follow the onscreen instructions to finish the installation and the Windows Home Server Setup. You will be required to set the server name, administrator password, and several settings.

3 Getting started



1. Double-click the Windows Home Server icon to bring up the logon window, and then enter the administrator password to log on to the Windows Home Server Console.
2. On the Windows Home Server Console interface, you can start to remotely view, add, share, and protect important files on your home server. Turn over this Quick Start Guide to see what you can do with the Windows Home Server Console.

Adding a hard disk drive



1. **Install the new HDD to the home server.**

Always install the hard disk drive in which the OS is or will be installed to the HDD1 bay.

 - (a) Power off the server and unplug the power cord.
 - (b) Lay the server horizontally on a stable surface, and then loosen the two thumbscrews to remove the left side case.
 - (c) Use a coin to loosen the three screws and put the screws at a visible place in case they are lost.
 - (d) Hold the plastic grip, and then lift up the HDD cage horizontally.
 - (e) Reverse and place the HDD cage on the stable surface.
 - (f) Fasten the bundled four screws to the new HDD, and then slide the HDD into the empty HDD bay.
 - (g) Hold the plastic grip and align the two pins on the cage as shown to the mounting holes. Push down the HDD cage to the right side case.
 - (h) Fasten the three screws which were removed and put aside at the beginning.
2. **Add the new hard drive to Server Storage on the Windows Home Server Console.**
 - (a) Log on to the Windows Home Server Console.
 - (b) Click the Server Storage tab.
 - (c) Select the newly added hard drive (either internal or external) and then click Add to bring up the Add a Hard Drive Wizard. Click Next.
 - (d) Select from the following options:
 - Add this hard drive to your server storage to increase the storage capacity of your home server.
 - Use this hard drive to back up files that are stored on your home server.
 - (e) For detailed instructions, refer to the Windows Home Server Console Help.

Ensure that the newly installed hard drive must have 36GB capacity at least or else the HOME SERVER cannot recognize the hard drive.

 - (i) Slide the left side case back to the server body, and then fasten the two thumbscrews back to the case.

Setting up user accounts

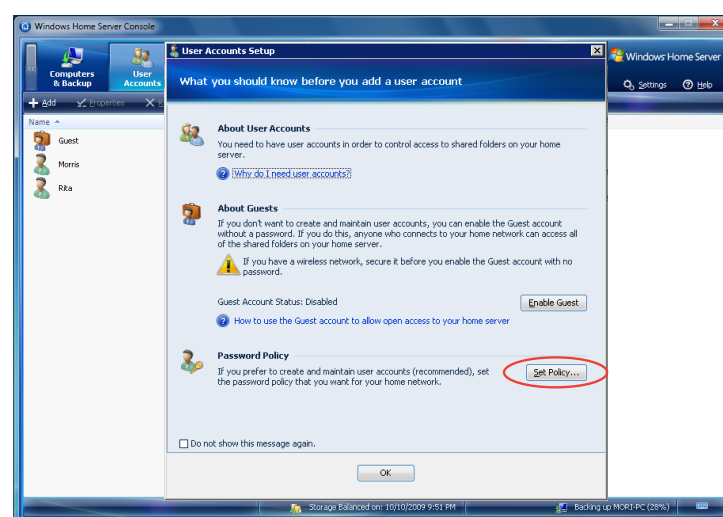
Click the User Accounts tab to create user accounts for each user. User accounts are required in order to control access to the shared folders on Windows Home Server.

Windows Home Server has a 10 user account limit, not including the built-in Administrator and Guest Account.

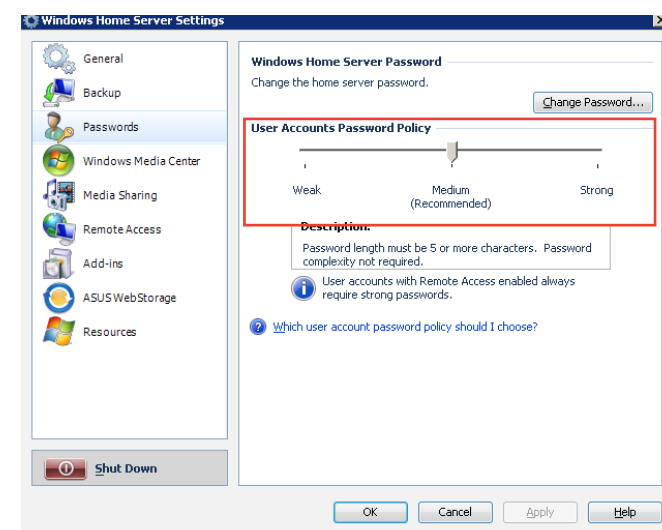
To create a user account

1. Log on to the Windows Home Server Console.
2. Click the User Accounts tab, and then the User Accounts Setup window appears.
3. Choose to use the Guest account; or, set up a password policy to configure the user accounts password complexity. Click OK.

A strong password is required if Remote Access is enabled.



- **Weak** – select this policy if you want shorter passwords for user accounts. The network security is weak, though.
- **Medium** (default) – passwords for user accounts must be at least five characters long without complexity requirement.
- **Strong** – select this policy to make access to your home network more secure. Password complexity is required.



To add, remove, disable, or modify a user account

- On the User Account tab, click Add and fill in the necessary information under the General tab.
- Select a user account, and then click Remove to delete it.
- Select a user account, and then click Properties to change the user account's password or disable the user account.

To disable the Guest account

1. On the User Account tab, right-click Guest, and then click Disable Account.
2. A confirmation message appears. Click Yes.

Sharing files on your home server

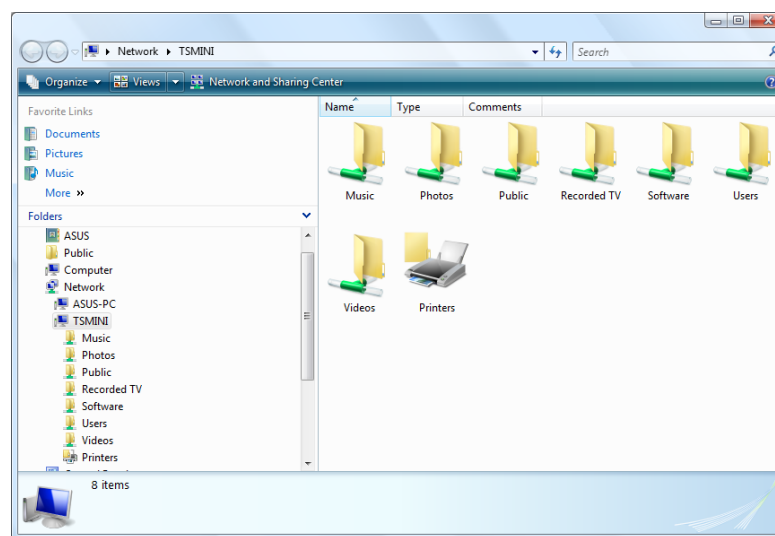
In shared folders, you can organize and store files on Windows Home Server to share them with other people on your home network.

To access shared folders on the home server

You may access the shared folders on your home server in several ways.

- from the Windows Home Server Console
- from the desktop shortcut
- from the Windows Home Server icon
- from the Windows Start Menu
- from My Network Places
- from the Internet

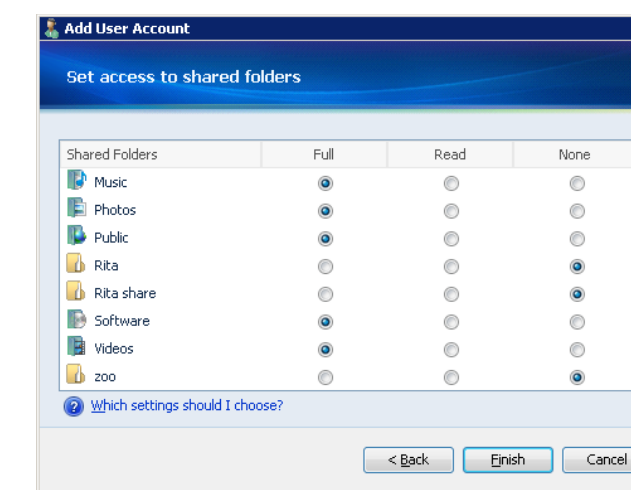
Then, you can copy files you want to share to the shared folders on the home server.



For more detailed instructions, refer to the User Manual that came with the product package.

To modify the folder sharing access

1. Click the User Accounts tab on the Windows Home Server Console, and then double-click a user.
2. In the Properties for Guest dialog, click the **Shared Folder Access** tab.
3. Set the user's access rights to existing shared folders on the home server.
 - **Full** – the user can create, change, and delete any files in the shared folder.
 - **Read** – the user can only read the files in the shared folder.
 - **None** – the user cannot read, create, change, and delete files in the shared folder.
3. Click OK.



Configuring a home-computer backup

You can customize the backup of each of your home computers from the Windows Home Server Console.

To configure backups for a home computer

1. Log on to the Windows Home Server Console.
2. Click the Computer & Backup tab.
3. Right-click a computer and then click Configure Backup.
4. Follow the Backup Configuration Backup Wizard to select the volumes you want to back up and the folders you want to exclude from the backup.

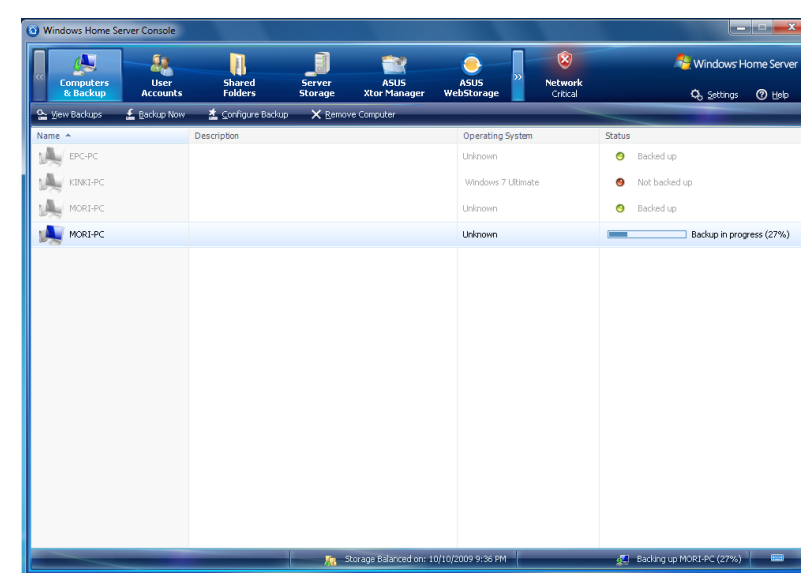
To adjust the backup time

By default, the backup time starts from 12:00AM to 6:00AM. You can adjust the backup time from the Backup settings page.

To configure automatic backup management

You can configure how many monthly, weekly, and daily backups to keep for your home computers. To do this:

1. Log on to the Windows Home Server Console.
2. Click Settings and then Backup.
3. In Automatic Backup Management, specify the number of months, weeks, and days.
4. Click OK to complete the setting.



Restoring files from a backup

You can browse and restore lost files and folders from a backup.

To open files and folders from a backup

1. Log on to the Windows Home Server Console.
2. Click the Computers & Backup tab.
3. Select a home computer, and then click View Backups.
4. Select a backup, and then click Open.
5. Select a volume to open, and then click Open.

To restore lost files and folders from a backup

1. When you open the backup, browse and drag the files and folders that you want to a folder on your home computer.
2. Close the window when you are done copying the files and folders that you want to restore.

ASUS special features

ASUS TS mini provides three special features that enable you to conveniently control the system status, manage files and folders, and enjoy one-year-free large online space.

ASWM

ASWM (ASUS System Web-based Management software) is an interface that allows you to conveniently manage your home server status via Windows Home Server Console.

Click the ASWM tab to control the system status.



ASUS Xtor Manager

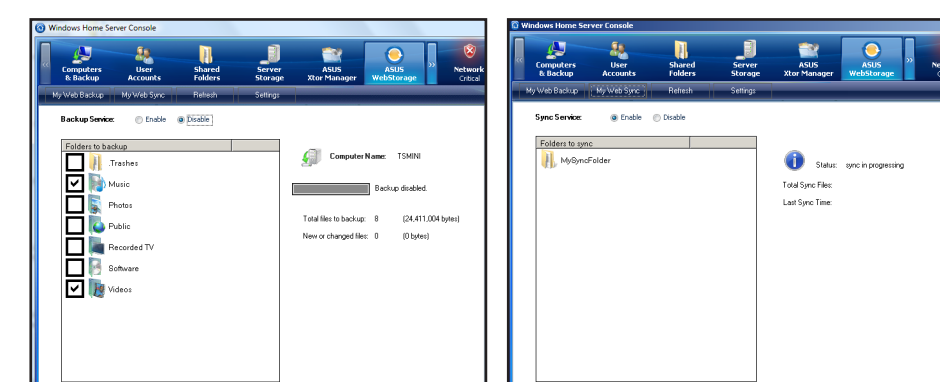
ASUS Xtor Manager is an add-in tool that helps you easily and directly back up, synchronize, and manage files and folders on external USB/eSATA storage devices attached to the home server.

Click the ASUS Xtor Manager tab enter the main page.



ASUS WebStorage

ASUS WebStorage allows you to enjoy one-year-free online space and back up files to your home server. With Internet connection, you can access and share any files whenever you want and wherever you are.

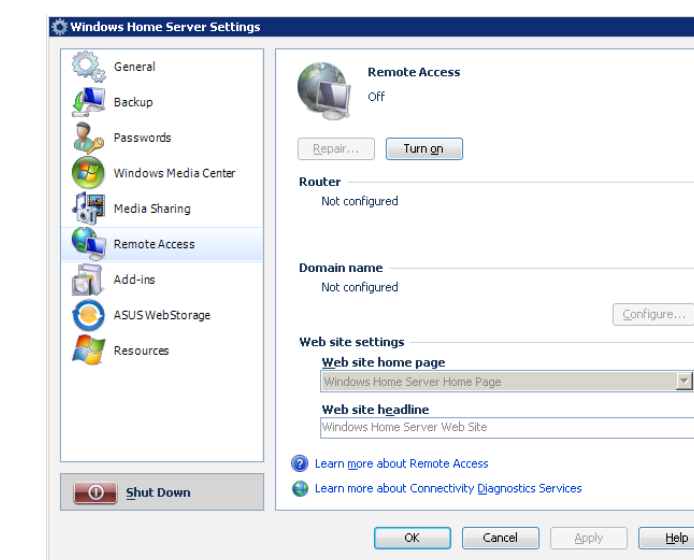


Remotely accessing your home server over the Internet

Enabling remote access on the Windows Home Server

To access your data and home computers from the internet whenever you are, you need to configure Windows Home Server to allow Remote Access.

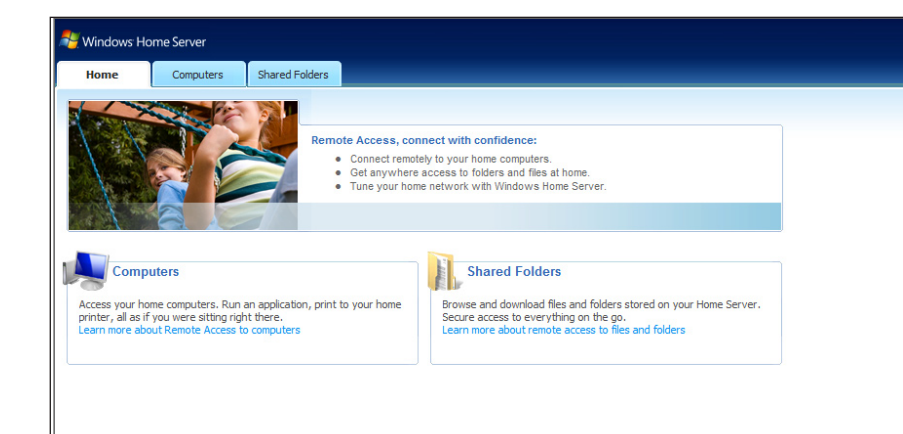
1. Log on to the Windows Home Server Console.
2. Click Settings on the upper right corner of the Windows Home Server Console window, and then click Remote Access in the left pane.
3. Under the Remote Access heading, click Turn on to enable the remote access configuration to your home server.



For more detailed instructions, refer to the User Manual that came with the product package.

Accessing the TS mini home page

1. Open the Internet Explorer Web browser.
 - Ensure to use the Internet Explorer to access the home page. When you use other Web browsers, you may not use some features like Remote Access to Computers or Connect to your Home Server.
2. Enter the Internet domain name assigned to you during the remote access setup procedures (For example, <https://tsmini.homeserver.com>). Then, the Logon web page appears.
3. Click the Log On button on the upper right corner.
4. Enter a personal user account and password.
 - You cannot use the Administrator account or the Guest account to log on to the home page. You must log on with a user account that is enabled for Remote Access.
5. Now you are on the TS mini home page. There are three tabs on the home page: Home, Computers, Shared Folders. Click each tab to go on.



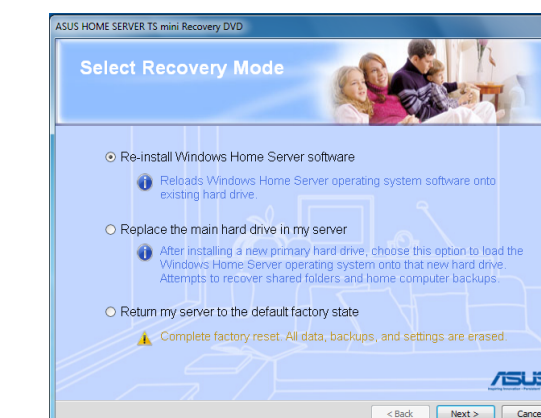
Performing system recovery

Use the bundled ASUS HOME SERVER TS mini Recovery DVD to recover your home server, restore the home server to its factory default, or replace the main hard disk in your home server.

If you perform Server Recovery, the server settings and all user accounts will be deleted; the data in shared folders still exist. If you perform Factory Reset, all data on the home server's hard drives will be deleted.

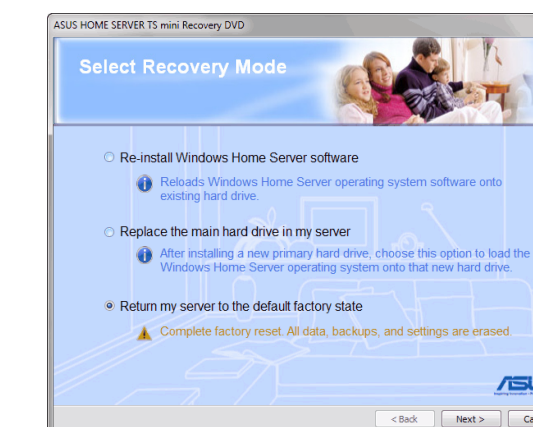
Recovering Windows Home Server

1. Insert the ASUS HOME SERVER TS mini Recovery DVD into the computer that is connected to your home network. The Server Recovery wizard starts.
 - If Autorun is NOT enabled in your computer, browse the contents of the Recovery DVD to locate the **Install.exe** file. Double-click the **Install.exe** to run the Recovery wizard.
2. Click Next and follow the onscreen instructions to find your home server.
3. Select the option "Re-install Windows Home Server software" and then click Next. Follow the onscreen instructions to finish the recovery process.



Restoring Factory Defaults

1. Repeat step 1-2 in the previous section "Recovering Windows Home Server".
2. Select the option "Return my server to the default factory state" and then click Next. Follow the onscreen instructions to finish the restore process.



Replacing the main hard drive in your home server

To install Windows Home Server on a new main hard drive

1. Follow the section "Removing a hard disk drive" under Server Storage to remove the existing main hard disk drive.
2. Follow the section "Adding a hard disk drive" under Server Storage to install a new main hard disk drive.

Always install the hard disk drive in which the OS is or will be installed to the HDD1 bay.

3. Repeat step 1-2 in the previous section "Recovering Windows Home Server".
4. Select the option "Replace the main hard drive in my server", and then click Next. Follow the onscreen instructions to complete the process.