

**Pick an  
Associated Equipment  
Distributor  
for  
Added Value.**



- Product application and performance
- Parts inventory and delivery
- Factory trained mechanics and diagnostic equipment
- Financing services to fit your situation

**SUPPORTING ARIZONA'S  
CONSTRUCTION AND MINING INDUSTRIES**

ACTION RENTALS  
931-7404

ALL QUIP OF ARIZONA  
246-0500

ARIZONA INDUSTRIAL MACHINERY  
269-7111

AZ MITE E LIFT  
437-8373

CACTUS EQUIPMENT CORP.  
254-5926

CASE POWER & EQUIPMENT  
269-3221

CENTURY MACHINERY CO.  
243-7137

C I T GROUP  
784-2300

COPPER STATE EQUIPMENT  
254-2552

CUMMINS SOUTHWEST  
252-8021

DITCH WITCH OF ARIZONA  
437-0351

EMPIRE SOUTHWEST  
898-4400

FIRST INTERSTATE CREDIT ALLIANCE  
482-0695

GENERAL ELECTRIC CAPITAL CORP.  
831-6114

I T T COMMERCIAL FINANCE  
953-1866

INGERSOLL-RAND EQUIPMENT SALES  
258-6493

JAUQUAYS EQUIPMENT CO.  
254-6494

MARDIAN EQUIPMENT CO.  
484-7799

NORTH RENTALS  
943-3274

NEILS DETROIT DIESEL  
257-0561

RENTAL CITY  
947-7303/269-2351

REUTER EQUIPMENT CO.  
269-1050

ROAD MACHINERY CO.  
252-7121

S M A SOUTHWEST  
829-0991

SOUTHWEST CONTRACTOR  
230-0598

SUNSTATE EQUIPMENT  
275-0601

TOLBY EQUIPMENT  
937-1636

VALLEY EQUIPMENT RENTALS  
834-3355

VERMEER EQUIPMENT OF AZ.  
271-9113

WESTERN MACHINERY CO.  
237-3755

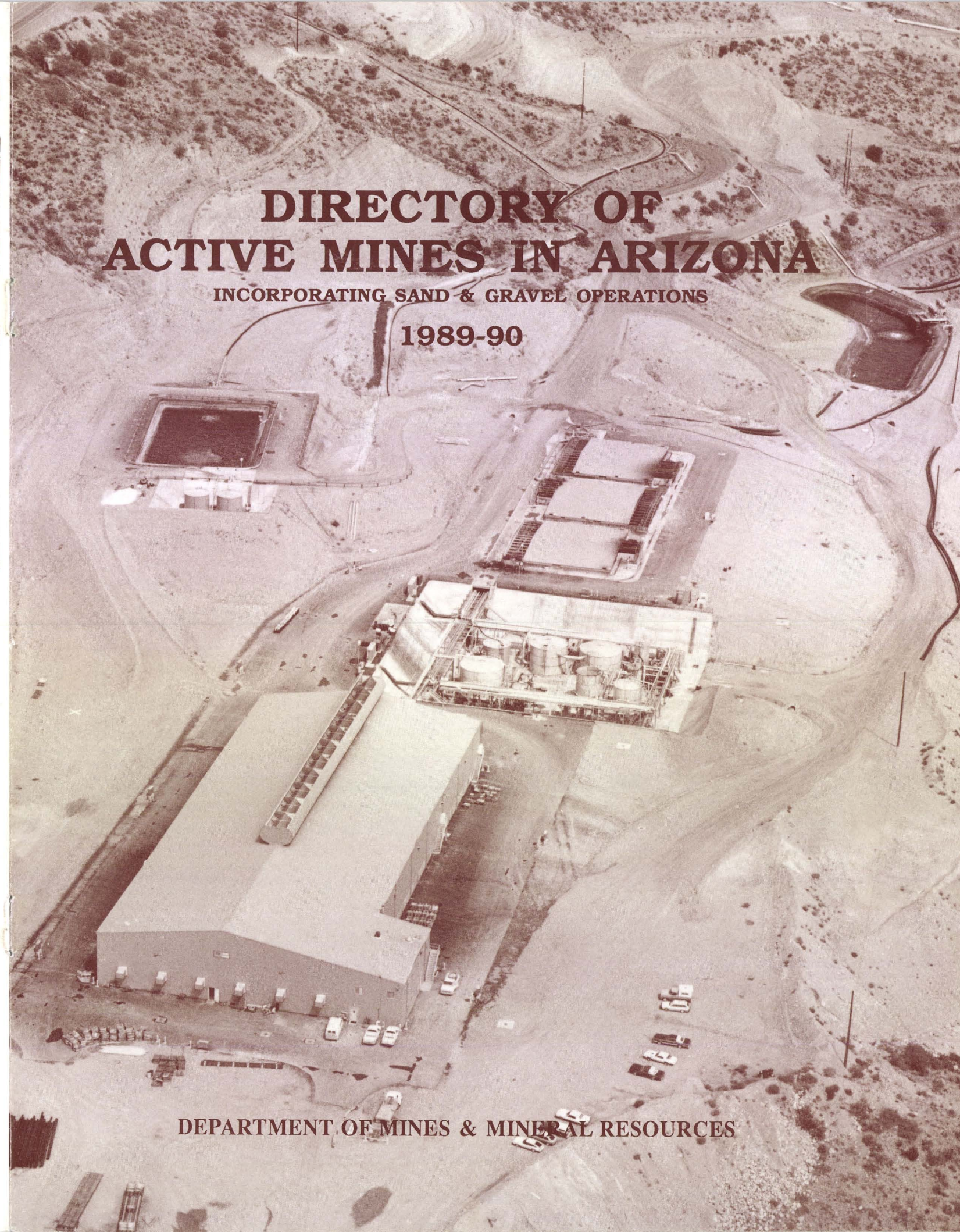
Associated Equipment Distributors of Arizona  
3101 N. Central Ste. 490 Phoenix, Arizona  
85012 (602) 230-0590



**DIRECTORY OF  
ACTIVE MINES IN ARIZONA**

INCORPORATING SAND & GRAVEL OPERATIONS

1989-90



DEPARTMENT OF MINES & MINERAL RESOURCES

**THE TRADE ASSOCIATION FOR THE MINES AND THEIR SUPPLIERS**

A&R Metals  
 Able Steel Fabricators  
 Adams Machinery  
 Agate Construction  
**AIM-SAFE**  
 Alexander and Alexander  
 Allied Industrial Distributors  
 Almas International  
 American Materials Handling  
**Apache Powder**  
**Argo International**  
 Arizona Building Systems  
 Armco  
 Astro-Lite  
 Astry Steel and Machine  
 AWA Erectors  
 Ayers Gear and Machine  
**Arizona Portland Cement**  
 Arizona Industrial Machinery  
 Arizona Wire Rope and Rigging  
**Barrows and Company**  
**B&K Fleet**  
**B&K Steel Fabrications**  
**B.J. Cecil Trucking**  
 Baker Hughes Mining Tools  
 Ball, Ball and Brosamer  
 Bearing Belt and Chain  
 Bear Equipment  
 Blue Circle  
**Bonita Steel**  
 Border Steel  
 Bridgestone Tire  
 Brown and Root  
 Bucyrus Erie  
 Canyon State Oil  
**Capitol Castings**  
 Caterpillar  
 Chemstar  
**Chevron**  
 Chuck Green and Associates  
 Cimetta Engineering  
**Cobre Tire**  
 Cia. Siderurgica de Guadalajara  
 Copper Basin Railway  
 Copper State Bolt and Nut  
 Copperstate Metals  
 Crusher Service Company  
 CITI  
**Cummins SW**  
 Dames and Moore  
 Dealers Tire Supply  
 DiEugenio Tool Center  
 Donaldson  
**Dresser-Haulpac**  
 Dresser-Security Division  
 E&C International  
 Eastern Electric  
 Ed Holderness  
 El Paso Natural Gas  
 El Paso Pipe and Supply  
**Empire Machinery**  
 EMS  
 Engineered Sales Company  
 ESCO  
**Fennemore Craig**  
 Filtemp Sales  
**Filter Products**  
**First Interstate Bank**  
 Frog, Switch, and Mfg.  
 Gilbert Pump  
 Goodyear Tire  
 Granberry  
 Grand Canyon Pump  
**Granite Construction**  
 Groendyke Transport

Grohall Inc  
**H & L Tooth**  
 Haltec  
 Harnischfeger  
**Heflin Harrington**  
 Heflin Steel  
 Henkel Corp  
 High Strength Steel West  
 Hill Brothers Chemical  
 Independent Mining Consultants  
 Industrial Mining Supply Company  
**Industrial Motor and Control**  
 Industrial Parts Depot  
 Industrial Tool and Supply  
**Ingersoll Rand**  
 Insituform SW  
 Ireco  
 J.R. Kennedy  
 James and Luther  
 Jaquays Equipment  
 Jenny Freight Lines  
 John Carollo Engineers  
 Kactus Supply  
 Kaner Co.  
 Karlson Machine Works

National Mine Service Company  
**Naumann Material Handling**  
**Neils Detroit Diesel**  
 New Frontier Trading Company  
 Nucor-Vulcraft  
 Paydirt  
 P.E. O'Hair and Co.  
 Park Corp - Mine Equip Division  
 Parsons Steel Erectors  
**Peabody Coal**  
 Phoenix Fuel  
 Phoenix Gunitite  
 Pioneer Equipment  
 Pipeline Materials  
 Pre-Cast Mfg.  
 Presco/SW Electric Supply  
 Price Waterhouse  
 Process Equipment  
 R.J. Ruff  
 R.R. Evans  
 Randolph V. Peterson Inc  
 Redburn Tire  
 Reliance Electric  
 Reppel Steel  
 Rimex  
**Road Machinery**  
 Robert E. Fulton Co.  
 Romac Motor and Control  
 S T Machine  
**Saguaro Conveyor**  
 BancSouthwest Equipment Leasing  
 Slade Sales  
 Smith Pipe and Steel  
 Smithy Recycling  
 Snell and Wilmer  
**Southwest Contractor Magazine**  
**Southwest Energy**  
 Sundance Truck Center  
**Sundt Corp.-Indus Div**  
 Sundt Products  
 Sunward  
 T.A.Caid  
 Ted Levine  
 Tempe Industrial Supply  
 Thunderbird Fire and Safety  
 Todd Corporation  
 Toshiba-Houston  
 Tractor Parts and Service  
 Tucson Bearing  
 Tucson Blueprint Supply  
 Tucson Tractor  
 U.S. Electrical Motors  
 U.S. Castings  
 Ullrich Copper  
**Union Rock and Materials**  
 United Truck and Equipment  
 Valley National Bank  
 Valley National Insurance  
 Van Waters and Rogers  
 Vroom Engineering  
**W.R. Ryan**  
 W.W. Williams SW  
 Walker Distributing  
**Waterton Industrial**  
 WESCO  
**Western Machinery**  
**Western States Tire**  
 Western Technologies  
 Western Truck Equipment  
**Westinghouse Electric**  
 Willing Pump & Supply  
 Wisco Supply  
 Wiseda  
**Witco-Golden Bear**  
 Xtek/Goldman



Publisher of Southwestern Buyer's Guide, the region's major resource for purchasers of mine supplies, services and equipment.

Outspoken when industry's voice must be heard

Visible on issues vital to mining

Promoter of copper mining

for membership information contact our Executive Director, Daniel R. Miller

Keller Equipment  
 Kemp Rubber  
**Kerley Mining Products**  
 Keystone Sales  
 King Bearing  
 Knight Foundry  
 L&M Radiator  
 Lewis and Roca  
 Liggett Industries  
 Liquid Air  
 M-3 Engineering  
 M.C. LaBarr  
**Mining & Construction Suppliers**  
 Mardian Equipment  
 Maskell -Robbins  
 Maya Construction  
 McBride Equipment  
 Merle's Automotive  
 Metal-Weld  
 Mintec, Inc.  
 Modular Mining Systems  
 Motion Industries  
 Motor Cargo  
**Mountain States Mineral Enterprises**  
 National Metals

THE TANNER COS. - 5400 E. Empire Ave., Flagstaff, AZ 86001, 526-5250.

**GILA BEND**

WESTERN SAND & ROCK - P.O. Box 679, Stout Road, Gila Bend, AZ 85337, 683-2251.

**GLOBE**

GUZMAN CONSTRUCTION - P.O. Box 3100, Superior-Globe, Globe, AZ 85501, 425-5775.

**HOLBROOK**

BLACKROCK CONSTRUCTION - Perkins Valley Rd., P.O. Box 789, Holbrook, AZ 86025, 524-6159.

**HUACHUCA CITY**

ALLISON ROCK & SAND INC. - P.O. Box 5065, Oak Drive, Huachuca City, AZ 85616, 456-1521.

G&A SAND & GRAVEL INC. - Mustang Rd., Huachuca City, AZ 85616, 456-1305.

HUACHUCA CONCRETE INC. - Mustang Rd., P.O. Box 5086, Huachuca City, AZ 85616, 456-1600.

**HUMBOLDT**

SUPERIOR READY MIX - Hwy. 69, Humboldt, AZ 86329, 632-7936.

**KEARNY**

SAGUARO CONCRETE CO. - P.O. Box 156, Industrial Road, Kearny, AZ 85237, 363-7256.

**KINGMAN**

DESERT CONSTRUCTION INC. - 4490 N. Hwy. 66, Kingman, AZ 86401, 757-2213.

KINGMAN REDI-MIX - Mohave Airport Dr., Kingman, AZ 86401, 757-7446.

THE TANNER COS. - 1685 Kiowa Bl., Kingman, AZ 86401 855-7210.

**LAKE HAVASU CITY**

MOHAVE CONCRETE & MATERIALS INC. - Hwy. 95N., Lake Havasu City, AZ 86403, 764-2226.

**MAMMOTH**

FRED CLARK TRUCKING CO., INC. - P.O. Box 116, 104 Main, Mammoth, AZ 85618, 487-2232.

**NOGALES**

ABES MATERIALS - Rio Rico Rd., Nogales, AZ 85628, 281-0310.

J.D.'S SAND & GRAVEL INC. - 602 W. Mariposa, P.O. Box 35, Nogales, AZ 85628, 281-9449.

MULTI-METALS INC. - Mariposa Rd., Nogales, AZ 85628, 287-3939.

PADILIA SAND & GRAVEL - River Rd., Nogales, AZ 85628, 287-8831.

THE TANNER COS. - 147 S. Rio Rico, Industrial Park, Nogales, AZ 85621, 281-9669.

**PAGE**

GENERAL ROCK & SAND - P.O. Box 237, Industrial Park, Page, AZ 86040, 645-3289.

KOCJAN ASSOCIATES, INC. - P.O. Box 3748, Industrial Park, Page, AZ 86040, 645-2297.

**PARKER**

BLUE RIVER CONCRETE & AGGREGATE - Riverside Dr., Parker, AZ 85344, 669-8696.

SHEPARDSON ENTERPRISES - Mohave Rd., Parker, AZ 85344, 669-9251.

THE TANNER COS. - Riverside Dr., Parker, AZ 85344, 669-9251.

**PAULDEN**

PAULDEN SAND & ROCK REDI-MIX Div. Dunbar Stone Co., Inc., P.O. Box 403, Paulden, AZ 86334, 636-2500.

**PAYSON**

PAYSON CONCRETE & MATERIALS, INC. - P.O. Box 448, Aero Dr., & McLane, Payson, AZ 85541, 474-2231.

STAR VALLEY GRANITE & MATERIALS - Star Valley, HCR Box 43B, Payson, AZ 85541, 474-9396.

**PRESCOTT**



Copper Hill Mine silica flux stockpile.

EARTH PRODUCTS - 7001 2nd St., Prescott Valley, AZ 86314, 772-6446.

SUPERIOR READY MIX - 1365 N. Hwy. 89, Box 2077, Prescott, AZ 86302, 632-7450.

YAVAPAI MATERIALS, INC. - P.O. Box 814, Near Airport - Hwy. 89, Prescott, AZ 86301, 445-7305.

**RIMROCK**

B AND B MATERIALS - Rimrock, AZ 86335, 567-5702.

**SAFFORD**

CKC MATERIALS DIVISION - Airport Rd., Safford, AZ 85546, 428-3423.

SCARBOROUGH SAND & GRAVEL - 920 E. Stratton Dr., Safford, AZ 85546, 428-3128.

W.A. MORRIS SAND & GRAVEL & CON., INC. - Bowie Hwy., Safford, Z 85546, 428-1371.

**ST. JOHNS**

FRANCIS DAY & SONS - P.O. Box 157, St. Johns, AZ 85936, 337-2121.

**SEDONA**

THE TANNER COS. (U.M. DIV.) - W. Hwy. 89-A, Sedona, AZ 86336, 282-4200.

**SHOW LOW**

A & A READY MIX, INC. - N. 6th St., Show Low, AZ 85901, 537-5757.

JOY T. PEARCE CONSTRUCTION INC. - P.O. Box 2049, Hwy. 260, Show Low, AZ 85901, 537-4773.

**SIERRA VISTA**

DESERT CONCRETE CO. - P.O. Box 430, Haws Substation Rd., Sierra Vista, AZ 85635, 378-6072.

DREESZEN GRAVEL CO. - P.O. Box 661, Hwy 92, Sierra Vista, AZ 85635, 378-9443.

SIERRA READY MIX CO. - P.O. Box 111, North Ave., Sierra Vista, AZ 85635, 458-4343.

**SNOWFLAKE**

BRIMHALL SAND & ROCK & BLDG. MATERIAL - P.O. Box 750, Hwy. 77,

Snowflake, AZ 85937, 536-4226.

**SPRINGERVILLE**

RUE HALE PIPELINE SERVICE - 611 S. Voight St., P.O. Box 221, Springerville, AZ 85938, 333-4483.

**TAYLOR**

HATCH CONSTRUCTION & PAVING - Hwy. 77, Taylor, AZ 85939, 536-7213.

REIDHEAD SAND & ROCK, INC. - P.O. Box 7 Paper Mill Rd., Taylor, AZ 85939, 536-4519.

**WICKENBURG**

RED-E-MIX CONCRETE CO. - 286 1/2 N. Frontier, Box 12, Wickenburg, AZ 85358, 684-7248.

WICKENBURG CONCRETE & MATERIALS - P.O. Box 516, U.S. Hwy. 60, Wickenburg, AZ 85358, 684-3335, 684-3402.

**WILLCOX**

HAMILTON SAND & GRAVEL - Hamilton Rd., RR 1 Box 1350, Willcox, AZ 85643, 384-2582.

WILLCOX ROCK & SAND - 770 S. Cochise Ave., P.O. Box 156, Willcox, AZ 85643, 384-2181.

**WINSLOW**

WINSLOW SAND & GRAVEL - 900 N. Apache Ave., Winslow, AZ 86047, 289-4596.

**YUMA**

ARIZONA SAND & GRAVEL - 1401 Atlantic Ave., Yuma, AZ 85364, 782-7074.

GRATE SAND & GRAVEL CO. - 12326 E. 8, Yuma, AZ 85365, 344-1145.

IDEAL COCRETE CORP. - 3647 E. Gila Ridge Rd., Yuma, AZ 85365.

J&F SAND & GRAVEL - Ave 24E and 9th St., Yuma, AZ 85364, 342-3654.

THE TANNER COS. (U.M. DIV.) - 2088 E. 20th St., Yuma, AZ 85365, 782-9267.

# Sand and gravel operations

Forward

Department of Mines and Mineral Resources  
Leroy E. Kissinger, Director

Phoenix Office: Tucson Office:  
Mineral Building, Fairgrounds 416 W. Congress, Rm 162  
Phoenix, Arizona 85007 Tucson, Arizona 85701  
(602) 255-3791 (602) 628-6340

BOARD OF GOVERNORS

Clifford B. Altfield - Tucson Edna Vinck - Globe  
Chairman Vice Chairman  
Roy Miller - Phoenix Arthur H. Kinneberg - Phoenix  
Secretary Member

C.J. Hansen - Tucson  
Member

This Directory of Active Mines for 1989-90 is published for the Arizona Department of Mines and Mineral Resources by:  
SOUTHWEST CONTRACTOR  
3101 N. Central Ave., Ste. 490  
Phoenix, Arizona 85012

Additional copies are available from the Department of Mines and Mineral Resources' Phoenix or Tucson office for \$4.00 plus \$1.50 postage and handling if mailed. An *Active Mines Map* which shows the locations of each active mine (but not sand and gravel operations) is included with the Directory.

## Arizona Active Mines Index

This directory was compiled in November, 1989 from field visits and information received by the Department engineers. For the purpose of this directory, an active mine is arbitrarily defined as a mine that is in continuous operation, either in production or under full-time development for production. Also included in the directory are custom milling operations which are active or available on a full-time basis.

It is acknowledged that there are additional mines not listed which are in an exploration, evaluation, or part-time development phase. There are others where production is on an intermittent basis which are not listed. It is not the intent of the Department to neglect or ignore an operation. Not being a regulatory or taxing authority, our data is obtained by the Department field engineers and/or by voluntary submission of information for our records.

The directory is arranged alphabetically by company name. Each listing includes corporate addresses, mine name and location, operation description, and key personnel and titles. Included in the directory is a mine index that cross references to the operating company.

### Mine

Anasazi Stoneyard  
Andrada Marble Quarry  
Arizona One  
ARMCO Custom Mill  
Ash Peak Mine  
Ashfork Plant & Quarriers  
Aztec Quarry  
Bagdad  
Black Mesa Mine  
Black Cat Quarries  
Blaser Stoneyard  
Boundary Quarry  
Bowie Chabazite Operations  
Burro Creek Clay  
Camp Verde Gypsum Canyon  
Casa Grande  
Cheto No. 1  
Cheto No. 2  
Cheto Section 16 Mine  
Chicago Pit  
Clarkdale Quarry & Plant  
Congress Mine  
Contention  
Copper Hill Mine  
Copper Queen  
Copperstone  
Crown Claims  
Darling Cinder Pit  
Dead Eye Mines  
Devils Wash  
Dewey Ranch #2  
Douglas Quarry & Plant  
Dunbar Quarries  
Emerald Isle  
Feldman Quarry  
Flagstone Quarry  
Gold Bond Bldg. Products

### County Company

Maricopa Anasazi Co.  
Pima Andrada Marble Company Inc.  
Mohave Energy Fuels  
Cochise Alanco Ltd.  
Greenlee Arizona Flux Mines Inc.  
Coconino Western States Stone Company  
Yuma Western Arizona Rock Products  
Yavapai Cyprus Mines Corporation  
Navajo Peabody Coal Company  
Coconino Blaser Corporation  
Blaser Stoneyard  
Coconino Blaser Corporation  
Cochise UOP  
Mohave GSA Resources Inc.  
Yavapai Superior Companies  
Coconino Energy Fuels Nuclear Inc.  
Pinal Cyprus Metals Company  
Apache United Dessicants Gates  
Apache Engelhard Corporation  
Apache GSA Resources Inc.  
Pinal Nord Perlite Company  
Yavapai Phoenix Cement Company  
Yavapai Malartic Hygrade US Inc.  
Cochise Cowichan Resources Inc.  
Gila Triple Nichol Inc.  
Cochise Phelps Dodge Corporation  
La Paz Cyprus Gold Company  
Coconino Arizona Tufflite Inc.  
Coconino Superlite Builders Supply  
Coconino Mountain Mining, Inc.  
Pima Arizona Placer  
Yavapai Building Products Company  
Cochise Chemstar Inc.  
Coconino Dunbar Stone Company  
Mohave Arimetco Inc.  
Pinal National Gypsum Company  
Coconino Harley Gray Stone Company  
Maricopa National Gypsum Company

Gold Hill Mine  
Gold Prince  
Grace Chabazite Mine  
Grindstone 1 & 2  
Hayden Unit  
Hermit  
Houck Silica Sand  
Johnson  
Kanab North  
Kayenta Mine  
Lyles Mine  
Lower Cedar Tank Quarry  
MC Canyon Quarries  
Magma Limestone  
Mayer Onyx Quarry  
Mayer Schist Quarry  
Miami  
Mineral Park  
Mission Unit  
More Sand, Moon Sand  
Morenci  
Nelson Quarries & Plant  
New Cornelia  
New River Slate Quarry  
Pantano Clay Pits  
Inc.  
Phoenix Plant  
Picacho Mine office  
(mine in California)  
Pigeon  
Pine Nut  
Pinal Little Hill Mines Inc.  
Cochise Queenstake Resources US Inc.  
Cochise GSA Resources Inc.  
Coconino Blaser Corporation  
Gila Asarco Incorporated  
Mohave Energy Fuels Nuclear Inc.  
Apache Arizona Silica Sand Company  
Cochise Arimetco Inc.  
Mohave Energy Fuels Nuclear Inc.  
Navajo Peabody Coal Company  
Yavapai GSA Resources Inc.  
Coconino Blaser Corporation  
Coconino Hudman Stone  
Pinal Triple Nichol Inc.  
Yavapai Apache Stone Division  
Yavapai Apache Stone Division  
Gila Cyprus Metals Company  
Mohave Cyprus Metals Company  
Pima Asarco Incorporated  
Coconino Arizona Tufflite Inc.  
Greenlee Phelps Dodge Corporation  
Mohave Chemstar Inc.  
Pima Phelps Dodge Corp.  
Maricopa Building Products Company  
Pima Clinton-Campbell Contracting  
Maricopa Building Products Company  
Yuma Chemgold Inc.  
Coconino Energy Fuels Nuclear Inc.  
Mohave Energy Fuels Nuclear Inc.

Continued

(Cover photo)

Morenci solvent-extraction electrowinning facility. Photo courtesy of Phelps Dodge.

### Maricopa County

A&A MATERIALS INC. - 10333 E. McDowell Rd., Scottsdale, AZ 85257, 990-0557.  
A&B SILICA - 3015 S. 19th Ave., Phoenix, AZ 85041, 254-5863.  
ABC SAND & ROCK - 5401 N. 119th Ave., Glendale, AZ 85307, 935-1677.  
ACI-ARIZONA CRUSHERS INC. - P.O. Box 9129, 21001 N. 7th St., Phoenix, AZ 85024-242-5143.  
AJAX SAND & GRAVEL - 5026 S. 51st Ave., Laveen, AZ 85339, 935-1677  
ARIZONA CRUSHING CO. - 650 W. McKellips Rd., Mesa, AZ 85201, 835-0207.  
ARIZONA'S QUALITY GRANITE - Jomax Rd., 7401 W. Villa Rita, Peoria, AZ 85345, 869-0635.  
AZTEC MATERIALS - 3250 E. Lehi Rd., P.O. Box 928, Mesa, AZ 85211, 892-0501.  
BASELINE MATERIALS - 39353 Schnepf Rd., Queen Creek, AZ 85242, 987-3777; 497-3870.  
BLUE CIRCLE WEST, INC. - 2625 S. 19th Ave., Phoenix, AZ 85009, 253-2505. 274-6977.  
CALMAT COS. - P.O. Box 52012, Phoenix, AZ 85072, 254-8465.  
CAVE CREEK SAND & GRAVEL - 40020 E. Carefree Hwy., Cave Creek, AZ 85331, 488-4119.  
CHANDLER READY MIX - 235 East Baseline, P.O. Box 928, Mesa, AZ 85211, 892-0501.  
CORNERSTONE MATERIALS INC. - 3617 N. Gilbert, P.O. Box 1402, Mesa, AZ 85211, 969-2921.  
HARPER SAND & ROCK - 7200 S. 115th Ave., Tolleson, AZ 85353, 932-2767.  
FT. MCDOWELL SAND & GRAVEL CO. - P.O. Box 17150, Fountain Hills, AZ 85268, 837-2358.  
MESA MATERIALS INC. - 3410 N. Higley Rd., Mesa, AZ 85205, 830-1521.  
7845 W. Broadway Rd., Phoenix, AZ 85043, 278-3924.  
Jackrabbit Rd. & the Gila River, Buckeye, AZ 85326, 254-1995.  
MESA SAND & ROCK INC. - 2246 N. Country Club Dr. Mesa, AZ 85201, 964-1773.  
PHOENIX REDI-MIX CO. - 3635 S. 43rd Ave., Phoenix, AZ 85009, 272-2637.  
PIONEER SAND CO. 5851 W. Broadway Rd., Phoenix, AZ 85043, 233-2971.  
8747 E. Via De Commercia Rd., Scottsdale, AZ 85258, 951-8000.  
11408 W. Deer Valley Rd., Sun City, AZ 546-0046.  
RAINBOW ENTERPRIZES - 7665 W. Deer Valley Rd., Peoria, AZ 85345, 434-5314.  
SALT RIVER SAND & ROCK - P.O. Box 728, Mesa, AZ 85211, 990-1987.  
SAND SPECIALTIES, INC. - 5570 N. Bush Highway, Mesa, AZ 85205, 832-2120.  
SMITH SAND & GRAVEL - 34420 Old Black Canyon Highway, Black Canyon City, AZ 85324, 374-5448.  
SUND LAND SAND & GRAVEL - 6950 W. Southern, Laveen, AZ 85339, 237-3210.

SUN STATE ROCK & MATERIAL - P. O. Box 1340, Sun City, AZ 85372, 848-8911.  
THE TANNER COS. (United Metro DIV.) - P.O. Box 52124, Phoenix, AZ 85072, 220-5000.  
TRI-CITY REDI MIX - P.O. Box 148, 2128 E. 1st St., 967-7597, Tempe, AZ 85281, 967-7597; 968-2180.  
UNION ROCK & MATERIALS CORP. - P.O. Box 8007, 2800 S. Central Ave., Phoenix, AZ 85066, 276-4211.  
Beeline Highway, 990-0844.  
8507 N. El Mirage Rd., 935-2653.  
WESTERN QUARRIES CONSTRUCTION INC. - 10401 W. Glendale Ave., Glendale, AZ 85307, 245-1997.  
WESTERN SAND & ROCK - P.O. Box 65, 4405 S. Litchfield Rd., Avondale, AZ 85323, 932-1391.

### Pima County

ABC SAND & GRAVEL - 3800 S. Harrison Rd., Tucson, AZ 85730, 886-3030.  
ACE SAND & GRAVEL - 1011 W. Silverlake Rd., Tucson, AZ 85713, 622-1869.  
ACME SAND & GRAVEL - 7707 E. 22nd Street, Tucson, AZ 85710, 296-6231.  
AGGREGATE MATERIALS - (See Churchman Sand & Gravel), 2165 N. Rita Rd., Tucson, AZ  
B&R MATERIALS - P.O. Box 18138, 4200 S. Harrison Rd., Tucson, AZ 85731, 298-2371.  
BLUE CIRCLE WEST INC. - 4100 E. Columbia, Tucson, AZ 85714, 744-2500.  
CALMAT OF ARIZONA - P.O. Box 418, Rillito, AZ 85747, 629-0033.  
CHURCHMAN SAND & GRAVEL - 4250 River Rd., Tucson, AZ 85718, 325-1611.  
DOWNEY LA & SONS SAND & ROCK - 11600 E. Poorman Rd., Tucson, AZ 85747, 886-2315.  
G&A SAND AND GRAVEL INC. - 2038 W. Weymouth, P.O. Box 5925, Tucson, AZ 85703, 293-9283.  
GRANITE CONSTRUCTION CO. - 4115 E. Illinois, Tucson, AZ 85715, (602) 748-8000.  
Two pit locations.  
ORBAN EXCAVATING INC. - 10800 E. Irvington, Tucson, AZ 85730, 296-0381.  
PANTANO MATERIALS - 10851 E. Nebraska, Tucson, AZ 85706, 886-1511.  
SAN XAVIER ROCK & MATERIALS - 3895 N. Business Center, Dr., Tucson, AZ P.O. Box 551, Cortaro, AZ 85652, 293-6833.  
THE TANNER COS. - At Orange Grove, 6601 N. Casa Grande Hwy., Tucson, AZ 85743, 744-3222.  
VALLEY ROCK & SAND CO. - 10700 E. Irvington Rd., Tucson, AZ 85730, 296-1733.  
WESTERN ROCK PRODUCTS INC. - 9201 N. Casa Grande Hwy., Tucson, AZ 85743, 744-6000.

### Statewide

AJO  
JIM BUSH READY MIX - 671 N. 2nd Ave., Ajo, AZ 85321, 387-6250.  
APACHE JUNCTION  
CASHWAY CONCRETE & MATERIALS -

3695 S. Meridan Rd., Apache Junction, AZ 85220, 830-5600.  
ASH FORK  
DUNBAR STONE CO., INC. - 901 Lewis Ave., P.O. Box 246, Ash Fork, AZ 86320, 637-3592.

AVONDALE  
WESTERN SAND & ROCK - 4405 S. Litchfield Rd., Avondale, AZ 85338, 932-1391.  
BENSON

COCHISE MATERIALS, INC. - County Rd., P.O. Box 910, Benson, AZ 85602, 586-3421.

BISBEE  
EADS CONSTRUCTION & REDI-MIX - Hwy. 92, Bisbee, AZ 85603, 432-4121.

BUCKEYE  
WESTERN SAND & ROCK - 815 N. 1 Ave., Buckeye, AZ 85326, 386-2401.

BULLHEAD CITY  
THOMPSON READY MIX - P.O. Box 9, 2413 Hwy. 95, Bullhead City, AZ 86430, 758-2065.

W.M.K. TRANSIT MIX CO. - P.O. Box 31, Bullhead City, AZ 86430, 753-1801.

CAMP VERDE  
SUPERIOR COS. - Hayfield Draw, Camp Verde, AZ 85322, 567-2244.  
THE TANNER COS. - Buffalo Trail, Camp Verde, AZ 85322, 567-5225.

CASA GRANDE  
PINAL MATERIALS - P.O. Box 1091, Casa Grande, AZ 85222, 836-1200.

PEASE TRUCKING CO. INC., - 608 W. 9, Casa Grande, AZ 85222, 836-2699.  
TEE PEE SAND & GRAVEL - S. Trekell Rd., Casa Grande, AZ 85222, 836-3879.  
THE TANNER COS. - 2500 W. Peters Rd., Casa Grande, AZ 85222, 836-8705.

CHINO VALLEY  
DUNBAR STONE CO. - Hwy. 89 & 6N, Chino Valley, AZ 86323, 636-2500.

COOLIDGE  
RED MOUNTAIN MINING SOUTH - Hwy. 287, Coolidge, AZ 85228, 723-5719.  
THE TANNER COS. - Auway Rd. at Hwy. 287, Coolidge, AZ 85228, 723-5851.

COTTONWOOD  
D&M MATERIALS - P.O. Box 733, Cottonwood, AZ 86326, 634-7740.  
SUPERIOR READY MIX - Hwy. 279, P.O. Box 308, Cottonwood, AZ 86326, 567-3368.  
VALLEY CONCRETE & MATERIALS - 820 E. Hwy. 89-A, P.O. Box 634, Cottonwood, AZ 86326, 634-4259.

DEWEY  
BRADSHAW MOUNTAIN MATERIALS - Hwy 69, Dewey, AZ 86327, 632-5115.

DOUGLAS  
DOUGLAS READY MIX & MATERIALS CO. - 101 W. 9, Douglas, AZ 85607, 364-8448.  
MADDUX & SONS, INC. READY MIX - 1927 Pan American, P.O. Box 1077, Douglas, AZ 85608, 364-7564.

DUNCAN  
OAKCREEK CONTRACTING INC. - S. 4th, Duncan, AZ 85534, 359-2722.

FLAGSTAFF  
LITTLE B MINING CO., INC. - 5600 N. Dodge, Flagstaff, AZ 86004, 526-5571.

**A.F. BUDGE (MINING) LTD.**

**UVX** T16N R2E Sec. 23  
P.O. Box 938, Jerome 86331 - Phone 634-9034 - Employees 16 - Located at Jerome - Underground mine producing gold and silver bearing flux for copper smelter.  
General Manager - Ronald R. Short  
Mine Superintendent - Pete Flores  
Mine Geologist - John McKenny

**Vulture** T6N R6W Sec. 36  
P.O. Box 20878, Wickenburg 85358 - Phone 376-9894 - Employees 5 - Located 12 miles south of Wickenburg - Processing of gold tailings by agglomeration, cyanide heap leaching - Merrill Crowe recovery.  
Production Manager - Dale H. Allen

**ALANCO LTD.**

**Office**  
7345 E. Acoma Drive, Scottsdale 85260 - Phone 991-8540.

Chairman of the Board - Richard Jones  
President - Kevin Jones  
Vice President - Larry Kersey

**ARMCO Custom Mill** T20S R22E Sec. 21  
Phone - 457-2231 - Located 4 miles east of Tombstone on Charleston Road - Custom milling facility - Gravity, flotation and CCD circuits.

**ANASAZI COMPANY**

**Anasazi Stoneyard** T4N R4E Sec. 14  
**Rattlesnake Quarries** T20N R1E Sec. 19  
**Sidewinder Quarries** T22N R1W Sec. —  
14982 N. 83 Place, Scottsdale, 85260, Phone - 991-0483 - Employees 20 - Operates flagstone quarries in Coconino County - Processing yard in Scottsdale - Marketed in United States and Canada.  
Owner - Grady Dawe  
Mining Supervisor - Neil Cowie

**ANDRADA MARBLE COMPANY INC.**

**Andrada Marble Quarry** T17S R16E Sec. 21  
4901 E. Drexel Road, Tucson 85706 - Phone 574-1414 - Employees 9 - Mine site located 17 miles southeast of Tucson - Open pit marble mine - used for calcium feed additive, plastering material, decorative stone, roofing material - 3,000 TPM.  
President and General Manager - David Hartley  
Vice President - Barbara Hartley

**APACHE STONE DIVISION****Halquist Stone Co. Inc.**

**Mayer Onyx Quarry** T12N R1E Sec. 22  
**Mayer Schist Quarries** T12N R1E Sec. 26  
22040 N. 21st Ave., Phoenix 85027 - Phone 267-8658 - Employees 3 - Quarries located near Mayer - Onyx marble quarry - Schist quarries - Building and dimension stone - Marketed throughout the United States and exported.  
President - Perry Halquist  
Manager - Harvey Bosch  
Clerk - JoAnne Bosch

**ARIMETCO INC.**

8835 E. Speedway Blvd. #A, Tucson, 85710, Phone - 290-9200  
President - H. Roy Shippe  
Vice President - John Bracale

**Johnson Mine** T15S R22E Sec. 26  
Open pit copper mine - Heap and dump leaching - Solvent extraction electrowinning plant under construction - Capacity 25,000 lb. copper per day - Anticipated employment 46 - mine start up scheduled for March 1990.

**Emerald Isle** T23N R18N Sec. 22  
In - situ copper leach - precipitate production - Employees 3.

**ARIZONA FLUX MINES INC.**

1630 S. Alvernon, Tucson 85711 - Phone 881-2919.  
President - Wes Becker Sr.  
Secretary-Treasurer - Wes Becker Jr.

**Ash Peak Mine** T8S R30E Sec. 3  
Employees 20 - Underground mine producing precious metal bearing flux for smelters at 200 TPD.  
General Manager - Les Billingsley

**ARIZONA PLACER**

**Devils Wash** T15S R2E Sec. 2  
HCR Box 840, Sells 85634 - Phone 361-2391 - Employees 2 - Located approximately 1 1/2 miles southwest of Quijotoa - Gold placer operation, wet gravity concentration - Capacity 500 yards/week.  
Operator - Don Kilgore

**ARIZONA PORTLAND CEMENT DIVISION****CalMat Inc.**

**State Sales Office**  
2400 N. Central, Suite 308, Phoenix 85004 - Phone 271-0069

Senior Vice President - Vaughn S. Corley  
Sales Manager - Craig Starkey

**Rillito Plant & Quarry** T12S R11E Sec. 26  
P.O. Box 338, Rillito 85654 - Phone (Tucson) 622-3503 - Employees 125 - Limestone quarry 5 miles from plant - Cement - Annual capacity 1,100,000 tons cement - Longest conveyor transport system in state.

Plant Manager - Tom Brosnan

Plant Chemist - J. Boyett

Plant Engineer - John Frye

Chief Electrician - Jack Meeler

Personnel Manager - Fran Young

Quarry Supervisor - Chuck Hansen

Purchasing Agent - Tom Follett

**ARIZONA SILICA SAND COMPANY**

**Houck Silica Sand** T22N R29E Sec. 29  
P.O. Box 108, Houck 86506 - Phone 688-2602 - Employees 25 - Open pit mine Plant south of Houck - Hydrafrac sand for oil well treatment - Markets include New Mexico and California. Abrasives and mold sand - Markets in Arizona and New Mexico.

President - Robert D. Fisher

General Manager - Elmer J. Gilstrap

Foreman - Ralph Nelson

Superintendent - (position currently vacant)

**ARIZONA TUFFLITE INC.**

**Crown Claims** T23N R7E  
**More Sand, Moon Sand** T23N R7E Sec. 24  
**White Vulcan** T23N R8E Sec. 19

2432 W. Peoria, Suite 1081, Phoenix 85029 - Phone 931-3682 - Glendale yard located at 6856 W. Orangewood, Glendale - Employees 18 - Mines located 12 miles north of Flagstaff - Pozzolan pumice quarries - 6000 yards/month - Used in making lightweight redmix and block - Large size material used in the preparation of "stone washed blue jeans" and in horticultural preparations - Marketed in and out of Arizona.

President - C.T. Morgan

Vice President/Mine Manager (Flagstaff) - Ed Morgan

Secretary/Treasurer - Clay Morgan

Orders and Transportation - Shirley Sharkness

Superintendent - Ed Bishop

**Winkelman Gypsum** T6S R16E Sec. 27  
P.O. Box 327, Winkelman 85292 - Phone 357-7002 - Gypsum Quarry - Gypsum for Arizona Portland Cement Plant at Rillito.

Superintendent - John Nevitt

**SUPERLITE BLOCK COMPANY**

P.O. Box 23163, 4150 W. Turney, Phoenix 85063 - Phone 269-3561.  
President - Max Graves

**Darling Cinder Pit** T21N R9E Sec. 2  
P.O. Box 40159, Flagstaff 86004 - Phone 526-5499 - Employees 5 - Open pit mine east of Flagstaff - Volcanic cinders used to make building block at Phoenix and Tempe plants.

Mine Superintendent - Terry Mitchell

**TRIPLE NICHOL INC.**

R.R. 1, Box N 123, Globe 85501 - Phone 425-7006 - Employees 75.  
President - Monty Nichols

**Copper Hill Mine** T1N R15E Sec. 15  
Silica Flux for copper smelters - Northwest of Globe.

**Magma Limestone** T1S R12E Sec. 35  
Limestone for San Manuel lime plant - East of Superior.

**Reymert Mine** T2S R11E Sec. 22  
Silver bearing silica flux for copper smelters - West of Superior.

**UOP**

P.O. Box 1029, Grand Junction, Colorado 81502 - Phone (303) 245-3700.

Senior Mining Engineer - Jim Kirchner

**Bowie Chabazite Operations** T11S R28E & T11S R29E  
Open pit mines operated by independent contract mining company - Crude chabazite used for specialty absorbants - Shipped out of state for further processing.

**UNITED DESSICANTS GATES****United Catalyst, Inc.**

Corporate Headquarters - P.O. box 32370, Louisville, KY 40232 - Phone (502) 634-7200 - Processing plant c/o United Dessicants, 101 Christine Drive, Belen, NM 87002 - Phone (505) 864-6691.

**Cheto No. 1** T21N R29E Sec. 23  
Located approximately six miles southeast of Sanders in NE AZ - Surface strip bentonite mine - Seasonal operation by mining contractors - Employees - 10 - Used in catalysts and in production of desiccants.

Vice President (Louisville) - Bill Monin

Operations Manager (Belen) - Robert Deuble

**WESTERN ARIZONA ROCK PRODUCTS INC.**

**Aztec Quarry** T7S R12W Sec. 28  
P.O. Box 27019, Albuquerque, New Mexico 87125 - Phone (505) 888-3815 - local address, P.O. Box 178, Dateland, Arizona 85333 - Phone 454-2252 - Employees 11 - Granite quarry for railroad ballast - Crushing and screening plant - Located between Aztec and Dateland south of I-8 and the Southern Pacific Railroad - material used in Arizona and California.  
Plant Manager - Ray Crabb

Office Manager - Dee Crabb/Arlene Toczko

**WESTERN STATES STONE COMPANY**

2830 Grand Ave., Phoenix 85017 - Phone 253-2018.  
President - C.E. Webster

**Ashfork Plant Quarries** T21N R2W Sec. 3  
P.O. Box 316 - Ash Fork 86220 - Phone 637-2542 - Employees 40 - Quarries located in Coconino, La Paz, Mari-

copa, Mohave, and Yavapai Counties - Stone processing facility in Ashfork - Commercial and decorative building stone marketed locally, out of state, and exported.  
Superintendent - Ismah Albright

**WHITECLIFFS INDUSTRIES**

**Whitecliffs Diatomite** T9S R17E Sec. 24  
7400 N. Oracle Rd., Suite 371, Tucson 85704 - Phone 797-0990 - Employees 20 - Diatomite mine located 10 miles southeast of Mammoth - Surface mining diatomaceous earth - Dry air cyclone plant - 75 TPD - Diatomite for industrial filler products - Marketed throughout the United States.

President - Gilbert Mott

Marketing/Sales Director - Graham Mott

Mining Engineer - Daniel Netz

Research Director - Kim Howell

General Manager - Peter Forsyth

**YELLOW HAIR TRADING AND MINING**

**Sleeping Beauty Mine** T1N R14 E Sec. 12  
P.O. Box 111, Globe 85502 - Phone 425-7625 - or 425-0446 - Employees 30 - Produces turquoise under contract with Magma Copper Company, Pinto Valley Mine - Sorts, grades and processes turquoise for worldwide distribution.  
President & Co-owner - W.H. Preston  
Vice President & Co-owner - Monty Nichols  
Co-owner - Cheryl Preston  
Sales - Ed Wheeler

*Mines Index Continued*

Pinto Valley	Gila	Magma Copper Company
Rattlesnake Quarries	Coconino	Anasazi Co.
Ray	Pinal	Asarco Incorporated
Reymert Mine	Pinal	Triple Nichol Inc.
Rillito Plant & Quarry	Pima	Arizona Portland Cement
Rim Quarry	Navajo	Building Products Company
San Manuel	Pinal	Magma Copper Company
Santa Rita Quarry	Pima	Calcium Products of Arizona
Sidewinder Quarries	Coconino	Anasazi Co.
Sierrita	Pima	Cyprus Mines Corporation
Silver Bell	Pima	Asarco Incorporated
Sleeping Beauty Mine	Gila	Yellow Hair Trading & Mining
Southwest Salt Mine	Maricopa	Morton Salt Division
Stutenroth Mill	Pinal	Stutenroth Milling
St. Johns Limestone	Apache	Superior Companies
Superior Mine	Pinal	Magma Copper Company
Superior Perlite	Pinal	Harborlite Inc.
Tolleson Mine	Maricopa	Clinton-Campbell Contracting
Twin Buttes	Pima	Cyprus Metals Company
United Verde	Yavapai	Phelps Dodge Corporation
U.S. Mine	Maricopa	Roddy Resources Arizona Inc.
UVX	Yavapai	A.F. Budge (Mining) Ltd.
Van Dyke Mine	Gila	Kocide Chemical
Vulture Mine	Maricopa	A.F. Budge (Mining) Ltd.
Weary Lode Mine	Gila	McKusick Mosaic
White Cross Mine	Pinal	Pinal Gypsum Corp.
White Rock Mine	Pinal	Catalina Marble Company
White Vulcan	Coconino	Arizona Tufflite Inc.
Whitecliffs Diatomite	Pinal	Whitecliffs Industries
Wildcat Hill Pit	Coconino	Flagstaff Cinder Sales Inc.
Winkelman Gypsum	Pinal	Superior Companies
Yellow Horse Quarries	Coconino	Blaser Corporation

Manager - J.L. Madson  
Assistant Manager - J.G. Clevenger  
Superintendent of Mines - Michael Allen  
Superintendent of Concentrators - R.I. Pennington  
Superintendent SX-EW - T.R. Snider  
Mechanical and Electrical Supt. - J.B. McBiles  
Director of Engineering and Geological Services - E.M. Schern

**New Cornelia Branch** T12S R6W Secs. 23, 26, 27  
Ajo 85321 - Phone 387-7451 - Employees 24 - Open pit copper mine - 30,000 TPD concentrator with molybdenum circuit - 190,000 TPD smelter with acid plant - All inactive.  
Plant Superintendent - J.L. Armstrong

#### PHOENIX CEMENT COMPANY

**Phoenix Office**  
2505 W. Beryl, P.O. Box 35395, Phoenix 85069 - Phone 264-0511 - Employees 11.  
President & CEO - John N. Stoss  
VP & Chief Financial Officer - James E. Carmichael  
Sales Manager - Pete Kuehner

**Clarkdale Quarry & Plant** T16N R2E Sec. 11  
P.O. Box 428, Clarkdale 86324 - Phone 634-2261 - Employees 107 - Quarry and plant two miles northwest of Clarkdale - 630,000 TPY - Cement used for building industry - Marketed in Arizona, New Mexico and Utah.  
V.P. Operations/Plant Manager - John B. Conway  
Assistant Plant Manager/Maintenance - Joe D'Avignon  
Assistant Plant Manager/Engineering - Tom Gibbons  
Quarry/Crushing/Industrial Relations Manager - Cliff Ayres

Controller - Richard Huffman  
Operations/Shipping Manager - Richard Gardner  
Purchasing/Stores - Frank Contreras

#### PINAL GYPSUM CORP.

**White Cross Mine** T7S R17E Sec. 31  
P.O. Box 99, Coolidge 85228 - Phone 723-3131 - Employees 12, - Quarry four miles north of Mammoth - Used for agricultural gypsum.  
President - Orin Benton  
Vice President - James Lewis  
Vice President, Operations - James Bechtel

#### QUEENSTAKE RESOURCES USA INC.

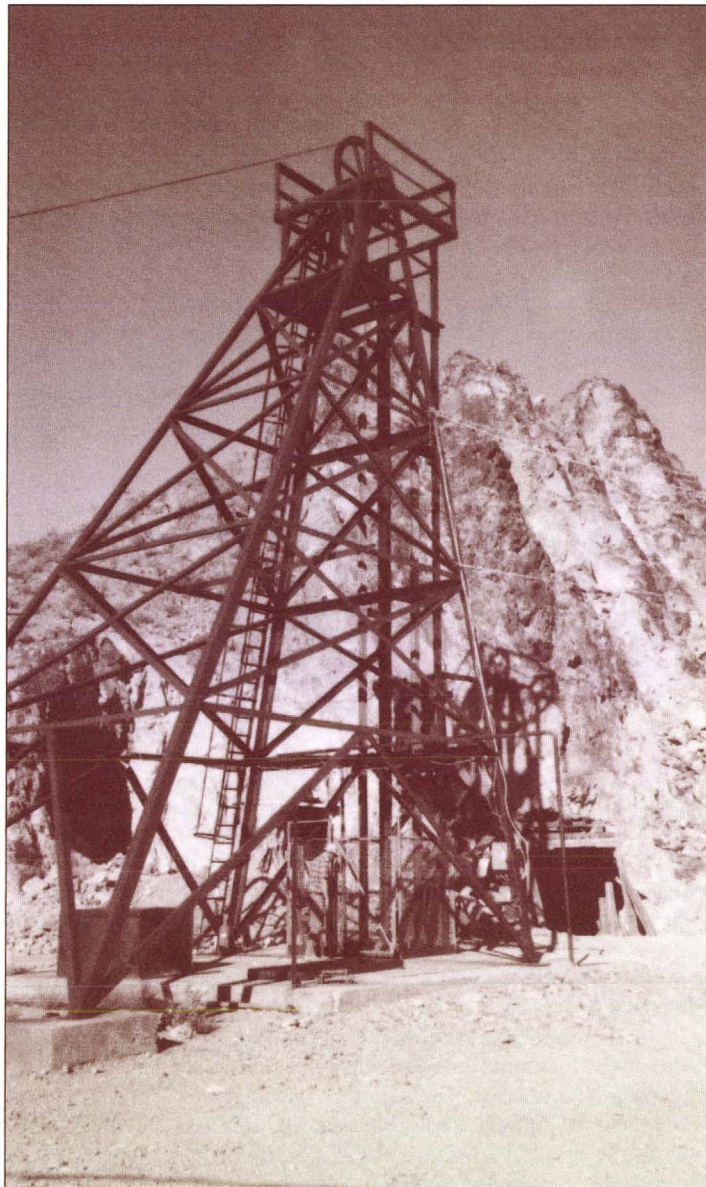
**Gold Prince Mine** T14S R27E Sec. 22  
P.O. Box 217, 241 S. Haskell Suite 102, Willcox 85644 - Phone 384-4337 - Employees 16 - Located 17 miles south-east of Willcox - Underground gold mine - Producing gold bearing silica flux for copper smelter.  
President - Gordon C. Gutrath  
Mine Superintendent - Alfred Voirin  
Project Geologist - Tim Pearson

#### RODDY RESOURCES ARIZONA INC.

**U.S. Mine (Aka Big Horn)** T4N R8W Sec. 1  
P.O. Box 2406, Wickenburg 85358 - Phone 684-2865 - Employees 17 - Located 25 miles southwest of Wickenburg - Open pit gold mine - Cyanide heap leach carbon absorption operation - 30,000 tons per month.  
General Manager - Walter Cullum

#### STUTENROTH MILLING

T7S R7E Sec. 8  
Rt. 4, Box 71D, Casa Grande 85222 - Phone 836-5568 - Employees 2 - Custom gravity mill - 50 TPD capacity - all types of ore - Located eight miles southeast of Casa Grande.  
Owner-Operator - Archie Stutenroth



The Moss Mine.

#### SUPERIOR COMPANIES

100 W. Coolidge, Phoenix 85013 - Phone 230-9300 - Employees 70.  
President - Archer V. Shelton  
Vice President, Operations - Lester Hall  
Vice President, Administration - Mary Kessler  
Vice President, Finance - Don Fischer

**Camp Verde Gypsum** T13N R5E Sec. 11  
P.O. Box 308, Cottonwood 86326 - Phone 567-3854 - Gypsum quarry four miles southeast of Camp Verde - Supplies gypsum to Phoenix Cement Company Plant at Clarkdale.  
General Manager - Verde Valley Operations - H. Boyd Snoddy  
Maintenance Supervisor - Alvin Hazelwood  
Production Manager - Danny Parker

**St. Johns Limestone** T12N R29E Sec. 4  
P.O. Box 2777, St. Johns 85936 - Phone 337-4529 - Limestone quarry 5 miles southeast of St. Johns - Provides limestone for coal plant gas scrubbing.

#### ASARCO INCORPORATED

##### Tucson Office

1150 N. 7th Avenue, P.O. Box 5747, Tucson 85703 - Phone 792-3010.  
Southwestern Mining Department  
General Manager - T.E. Scartaccini  
Assistant to General Manager - D.F. Skidmore  
Accounting Manager - G.H. Myers  
Chief Environmental Engineer - P.J. Maley  
Mining Department/Corporate Office  
Assistant to Vice President - A.D. Coumides  
Chief Geologist - S.A. Anzalone  
Mineral Beneficiation Department  
Director - D.E. Crowell  
Chief Metallurgist - T.D. Henderson  
Exploration Department  
Manager, Western U.S.A. - W.L. Kurtz  
Manager, Southwestern US Division - J.D. Sell  
Acid Sales Department  
National Sales Manager - G.P. Gillen

##### Hayden Unit

T5S R15E Sec. 14  
Box 98, Hayden 85235 - Phone 356-7804 - Employees 450 - Copper smelter capacity 940,000 TPY - Acid plant capacity 2,800 TPD.  
Manager - Darrell Himmesoete  
Operations Manager - Joe W. Ihem  
Operations Support Manager - D.J. Parker  
Technical Services Manager - D.K. Modrow  
Financial Manager - Jim O'Neal  
Maintenance Manger - Hugh Alexander  
Industrial Relations Manager - Bill Burrel  
Plant Engineer - R.L. Christiansen  
Safety Engineer - Rex Jennicks  
Purchasing Agent - K.C. Newnam

##### Mission Open Pit Copper Mine

T16S R12E Sec. 36  
**Mission Concentrator** T16S R12E Sec. 31  
Box 111, Sahuarita 85629 - West Pima Mine Road - Phone 791-2920 - Employees 555 - Open pit copper mine - Concentrator 42,000 TPD.  
Manager - John D. Low  
Superintendent - Service - J.B. Lichtenhan  
Mine Superintendent - S.L. Lakosky  
Chief Engineer - M.A. Melcher  
Geologist - R.B. Cummings  
Chief Chemist - C.D. Lobley  
Chief Metallurgist - J.P. Reynolds  
Mechanical Superintendent - H.E. Hughes  
Mill Superintendent - H.W. Walker  
Purchasing Agent - W.B. Manakee  
Chief Accountant - D.J. Hoffman  
Personnel Administrator - J.F. Coxon  
Safety Administrator - R.E. Jordan

##### Ray Open Pit Copper Mine

T3S R13E Sec 10  
**Ray Concentrator, Smelter, Acid Plant** T5S R15E Sec. 11  
P.O. Box 9, Hayden 85235 - Phone 356-7811 - Employees 757 - Open pit copper mine - Dump leach - Heap leach - Solvent extraction-electrowinning plant - Concentrator rated at 41,000 TPD - 400,00 TPY smelter (On Standby) - 900 TPD acid plant (On Standby).  
General Manager - B.K. Malone  
Operations Manager - Roger L. Gagliano  
Director of Safety and Environmental Control - Bryon Brumbaugh  
Industrial Relations Director - Rulon Ellett  
Personnel Administrator - Joyce L. Morris

Purchasing Agent - Bob Henry  
Technical Services Superintendent - N.A. Gambell  
Concentrator Superintendent - S.A. McGee  
Mining Superintendent - R.E. Thompson  
Mining Engineer - S.F. Johnson  
Maintenance Superintendent - Bill Pyle  
Division Geologist - Edward John

##### Silver Bell

T12S R8E Sec. 11  
Marana 85653 - Phone 622-6751 - Employees 20 - Open-pit copper mine - 11,000 TPD concentrator (On Standby) - Dump leach & precipitation plant operating.  
Mill Superintendent - D.J. Duncan  
Maintenance Superintendent - D.J. Shea  
Chief Accountant - A.J. Robles

#### BLASER CORPORATION

**Blaser Stoneyard** T16N R2W Sec. 22  
**Black Cat Quarries (Sandstone)** T22N R1W Sec. 17  
**Grindstone 1 & 2 (Sandstone)** T20N R1E Sec. 34  
**Yellow Horse Quarries (Sandstone)** T23N R2W Sec. 14  
**Lower Cedar Tank Quarry (Sandstone)** T22N R2W Sec. 2  
**Boundary Quarry (Sandstone)**  
North Highway 89, Chino Valley 86323 - Phone 636-4454 - Employees 40 - Processes, saws and cuts Arizona Flagstone-Sandstone - Marketed nationwide and exported to foreign countries.  
President - Donald Blaser  
Vice President - W. Larry Blaser  
Secretary/Treasurer - Manager, Operations - Dayle Blaser  
Orders - Lisa Espinoza

#### BUILDING PRODUCTS COMPANY

##### Phoenix Plant

4850 W. Buckeye Road, Phoenix 85043 - Phone 272-5576 - Clay mining by contractor - Plant consumes clay to produce extruded sewer pipe and roofing tile.  
Plant Manager - Vern Hamner  
Mine Consultant - Don Morris

##### Rim Quarry

T11N R19E Sec. 30  
Clay mine located 10 miles southwest of Clay Springs.  
**New River Slate Quarry** T7 R3E Secs. 5&6  
Slate quarry located approximately 6 miles northeast of New River.

##### Dewey Ranch #2

T14N R1E Sec. 15  
Clay mine located approximately 6 miles north of Dewey.

#### CATALINA MARBLE COMPANY

**White Rock Mine** T10S R13E Secs. 31 & 32  
P.O. Box 8997, Catalina 85725 - Phone 825-9398 - White marble quarried and processed for use as veneer and decorative stone, plaster sand and animal feed additive.  
Owner/Operator - Darell Goode

#### CHEMGOLD, INC.

##### Pichacho Mine California

1891 Rail Avenue, P.O. box 2015, Yuma 85366 - Phone 783-1891 - Employees 35 - Open pit gold mine located 24 miles north of Yuma in California - Open pit mine - Heap leaching - Carbon absorption - Desorption - Electrowinning - Annual production 18,000 oz. gold.  
Chairman - Chester F. Millar  
President - A. Dan Rovig  
Mine Manager - C. Kevin McArthur  
Operations Superintendent - Brian R. Young  
Metallurgist - Jesus Arrizon

#### CHEMSTAR INC.

2800 N. 44th St., Suite 400, Phoenix 85008 - Phone 955-5711.  
President - John Crawley

Vice President, Sales - Charles Cook  
 Vice President, Manufacturing - William E. Dodge  
 Vice President, Engineering - Bill McCandlish  
 Vice President, Finance - Mark T. White  
 Purchasing Manager - Mike Pinnau

**Nelson Quarries & Plant** T25N R10W Sec. 25  
 P.O. Box 370, Peach Springs 86434 - Phone 769-2271 -  
 Employees 73 - Limestone quarry - Lime plant rated at  
 1800 tons of lime per day.  
 Plant Manager - Ed C. Barry  
 Production Superintendent - Jerry Yound  
 Maintenance Superintendent - Jim Olander

**Douglas Quarry & Plant** T24S R26E Sec. 7  
 Route 1, Box 110, Douglas 85607 - Phone 364-2429 - Em-  
 ployees 60 - Quarry and plant located at Paul Spur - 3  
 lime kilns, plant capacity rated at 1000 tons of lime per  
 day.  
 Plant Manager - Mike S. Eliason  
 Production & Maintenance Superintendent - Richard An-  
 derson  
 Quarry Superintendent - R. Dean Vaughn  
 Production Services Superintendent - Don Williams

**CLINTON - CAMBELL CONTRACTING INC.**

**Phoenix Brick Yard**  
 1814 S. 7th Ave., Phoenix 85007 - Phone 258-7158 - Em-  
 ployees 100.  
 President - Frederic Campbell  
 Plant Superintendent - Don Campbell

**Tolleson Mine** T1N R3E Sec. 18  
 Clay pit located on 84th Avenue north of Van Buren -  
 Used in manufacture of clay products.

**Pantano Clay Pits** T16S R17E Secs. 21, 26, 27, 28 & 35

Clay pits located 25 miles southeast of Tucson (North of  
 Interstate 10-2 miles northwest of the Pantano Interchange)  
 - Clay used in the manufacture of structural clay products.

**COWICHAN RESOURCES INC.**

**Contention Mine** T20S R22E Sec. 11  
 905 Skyline Drive, Tombstone, 85638 - Phone - 457-2282  
 - Employees 50 - Open pit gold silver mine - Cyanide  
 heap leaching - Merrill-Crowe 4,000 TPD capacity recov-  
 ery plant  
 Executive Vice President & Mine Manger - Dustin Escap-  
 ule

**CYPRUS METALS COMPANY**

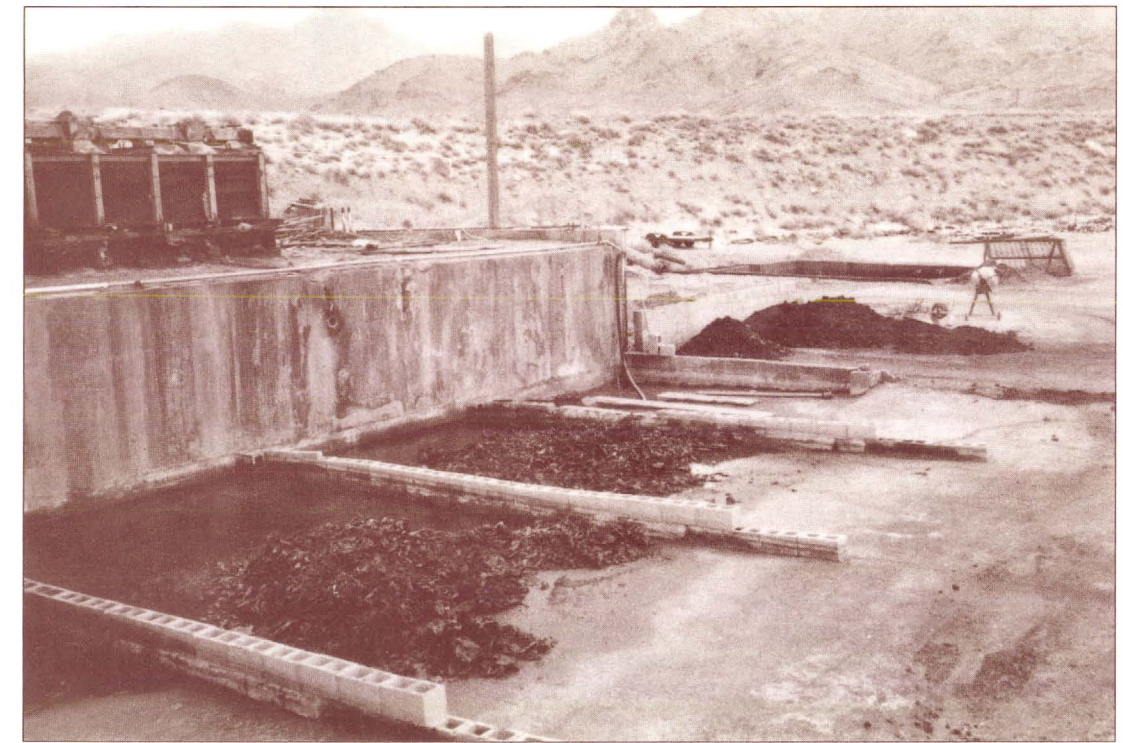
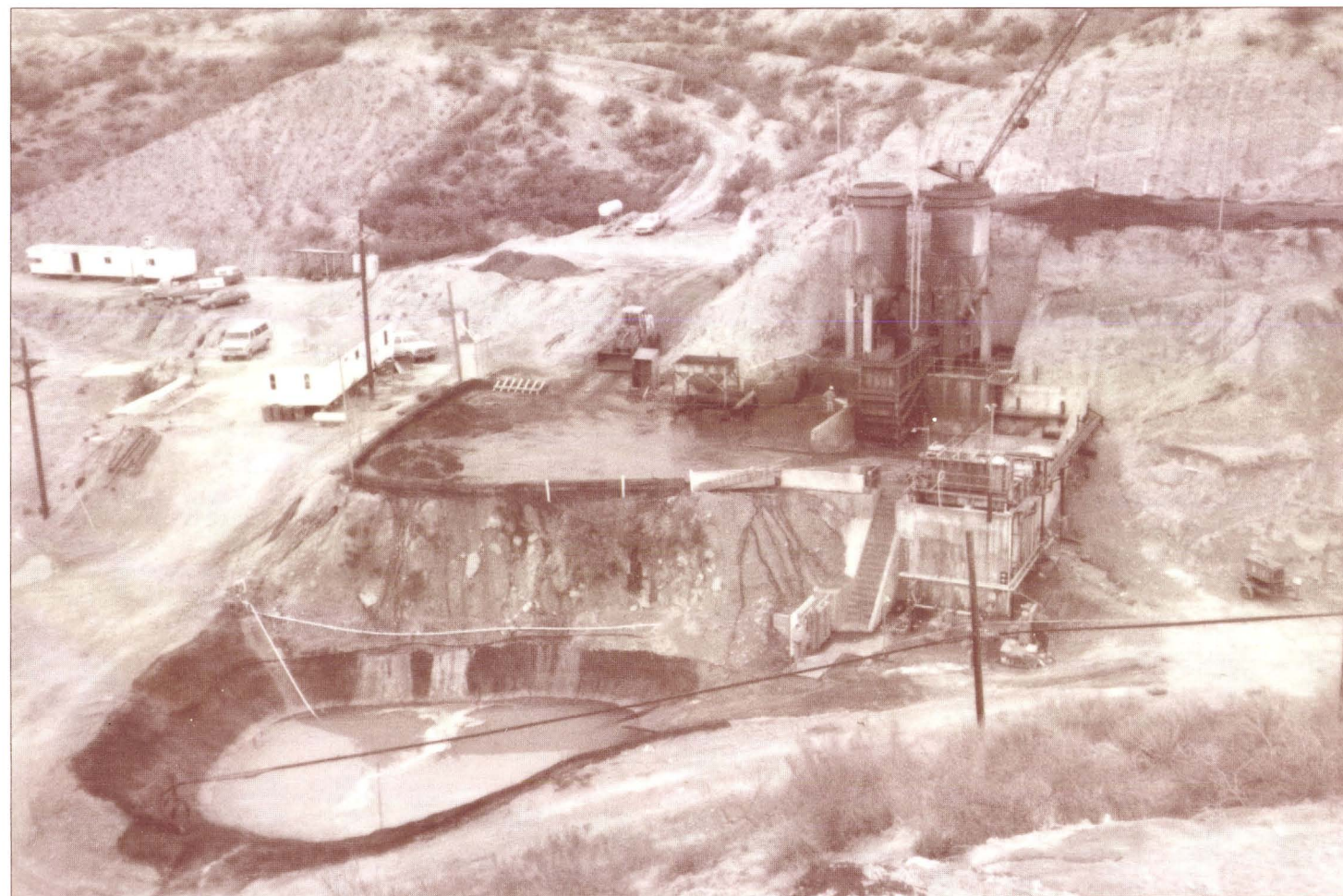
(A subsidiary of Cyprus Minerals Company)  
 1855 La Canada, Green Valley 85622 - Phone 628-4000.  
 Senior Vice President - C.J. Janes

**Cyprus Copper Company**  
 Senior Vice President - Operations - Jake Timmers

**Cyprus Mineral Park Corp.**  
**Mineral Park** T23N R17W Sec. 19  
 P.O. Box 6249, Kingman 86401 - Phone 565-2226 - Em-  
 ployees 13 - Open pit copper-molybdenum mine & 15,000  
 TPD concentrator (On standby) - Dump leach - Precipita-  
 tion plant operating - Located 16 miles north of Kingman.  
 Superintendent - G.H. Veach

**Cyprus Twin Buttes Corp.**  
**Twin Buttes** T18S R13E Sec. 5  
 Employees 1200, plus 45 Triple Nichol, Inc. contract em-  
 ployees - Open pit copper mine, oxide leach and solvent

*Copper percipitation facility at the Van Dyke Mine.*



*Emerald Isle copper precipitation plant.*

railroad track - Open pit perlite mine located two miles  
 southwest of Superior - Major markets are in Louisiana,  
 Illinois, Wyoming, Pennsylvania, Texas, and Indiana -  
 Filter aid used in filtering pharmaceuticals, chemicals,  
 sugar, and beverages.

Plant Manager - Louis R. Lucero

**PEABODY COAL COMPANY**

**Flagstaff Office**

1300 S. Yale, Flagstaff 86001 - Phone 774-5253.  
 President - Dennis L. Stevenson  
 General Supervisor, Operations - Sil Perla  
 Director of Human Resources - L.W. Bennett  
 Director of Engineering - Frank Farnsworth  
 Division Materials Manager - Merle Hendricks  
 Controller - Rich Armstrong  
 Manager, Quality Control - Charles J. Stenftenagel  
 Manager, Reclamation - Wayne E. Hilgedick

**Black Mesa Mine** T35N R18E Sec. 5

P.O. Box 605, Kayenta 86033 - Phone 677-5240 - Em-  
 ployees 362 - Surface coal mine - Located approximately  
 30 miles southwest of Kayenta.  
 Mine Superintendent - Lewis Allan Gough  
 Assistant Superintendent - Lee Quarcelino  
 Safety Supervisor - James Robert Gibbs  
 Safety Supervisor - Kieth Grass  
 Safety Supervisor - Ruth Williams

**Kayenta Mine** T36W R18E Sec. 9

P.O. Box 606, Kayenta 86033 - Phone 677-5208 - Em-  
 ployees 509 - Surface coal mine - Located 30 miles south-  
 west of Kayenta.  
 Mine Superintendent - Joe Johnson  
 Assistant Superintendent - Robert D. Boone  
 Safety Supervisor - Daniel Ashike, Jr.  
 Safety Supervisor - Martha Descheenic  
 Safety Supervisor - Joe Holgate

**PHELPS DODGE CORPORATION**

**Corporate Headquarters**

2600 N. Central Ave., Phoenix 85004-3015 - Phone 234-  
 8100.

Chairman of the Board - D.C. Yearley  
 President, Phelps Dodge Corporation - L.R. Judd

**Western Operations**

2600 N. Central Ave., Phoenix 85004-3015 - Phone 234-  
 8100.

Vice President & General Manager - A.E. Himebaugh  
 Vice President, Manager Engineering Services - R.W. Rice  
 Controller, Phelps Dodge Mining - R.G. Peru  
 Director of Employee Relations - S.L. Marcus  
 Assistant Director of Employee Relations - T.D. McWil-  
 liams

Director, Materials Management - R.G. Mock  
 Purchasing Agent - C.R. Jennings  
 Traffic Manager - J. Sheridan

**Western/US Exploration**

P.O. Box 50427, Tucson, AZ 85703-1427 Phone 792-  
 4981.

Manager, US Exploration - D.E. Ranta  
 Manager, Western Exploration Office - R.B. Ludden

**Exploration and Development Group**

2600 N. Central Ave., Phoenix 85004-3015 - Phone 234-  
 8100.

Senior Vice President - P.J. Ryan

**United Verde Mine**

T16N R2E Sec. 22

Located at Jerome - Phone 634-2622.  
 Agent - Andrew Peterson

**Copper Queen Branch**

T23S R24E Sec. 15

Highway 92, Bisbee 85603 - Phone 432-3621 - Employees  
 34 - Mine dump leaching - Copper precipitation plant.  
 General Superintendent - J.H. Ladd

**Morenci Branch**

T4S R29E Secs. 3, 4, 5, 8, 9, 10,  
 15, 16, 17, 21, 22, & 23

Morenci 85540 - Phone 865-4521 - Employees 1560 -  
 Open pit copper mine - Two concentrators (one with mo-  
 lybdenum circuit) - Total capacity 100,000 TPD - 650,000  
 TPY smelter with 2,400 TPD acid plant (inactive) - Dump  
 leaching - Precipitation plant - Solvent extraction-elec-  
 trowinning plant.

**Magma** T1S R12E Sec 35  
P.O. Box 37, Superior 85273 - Phone 689-2444. Under-ground copper mine and 3300 TPD concentrator. Dewatering mine - projected start-up mid-1990.  
Manager Special Projects - Frank Florez

**MALARTIC HYGRADE U.S. INC.**

**Congress Mine** T10N R6W Sec. 23  
P.O. Box 361, Congress 85332 - Phone 427-3633 - Employees 40 - Located 16 miles northwest of Wickenburg - Underground gold mine - Surface stockpiling ore - 350 TPD CIP mill under construction - Mill startup scheduled for April 1990.

General Manager - Robert Stoughton  
Chief Engineer - Matt Christian  
Chief Geologist - Scott Petzel  
Chief Maintenance and Safety Chief - Doug Perkins  
Safety Chief - Paul Johnson  
Purchasing Agent - Wayne Stoughton

**MORTON SALT DIVISION**

**Morton International**  
**Southwest Salt Mine** T2N R1W Sec. 2  
13000 W. Glendale Ave., Glendale 85307-2408 - Phone 247-3000 - Employees 27 - Solution mining via wells - Solar evaporation of brines - Produces salt for water softeners, domestic, agricultural and industrial use - Underground solution cavities are used for propane and butane storage.  
Plant Manager - Gary McFarlin

**MOUNTAIN MINING, INC.**

**Chem-Stone, Inc.**  
2215 W. Mountain View, Phoenix, 85021 - Phone 997-2013 - Employees 30 - Pumice treatment plant - Produces specialized ready to use pumice for the garment industry.  
President - David L. Bellaire

**Dead Eye Mines** T21N R2E, Secs. 4 & 16  
South Fourth Street, P.O. Box 783, Williams, 86046 - Phone 635-4211 - Pumice mine - Open pit mining of specialized pumice - Sizing plant.  
Operations Manager - Joe Bordeur

**NATIONAL GYPSUM COMPANY**

**Gold Bond Building Products Division**  
P.O. Box 20863, Phoenix 85036 - Phone 258-9321 - Employees 100 - Wallboard plant - Wallboard joint cement plant.  
Plant Manager - H.E. Skelley  
Office Manager - Mary James  
Joint Cement Plant Manager - Nick Tuhus

**Feldman Quarry** T6S R16E Sec. 27  
Star Route, Box 3990, Winkelman 85292 - Phone 357-7180 - Employees 8 - Open pit gypsum mine located 12 miles south of Winkelman - Gypsum used in plaster board.  
Quarry Superintendent - Dennis Macovjak

**NORD PERLITE COMPANY**

**Chicago Pit** T2S R12E Sec. 16  
Box 127, Superior 85273 - Phone 689-5631 - Employees 5 - Plant at Superior on Silver King Mine Road north of

extraction-electrowinning - Sulfide ore conveyed to Sierrita mill.

Project Manager - S.R. Stine  
Mine Manager - John Fenn  
Oxide Plant Manager - Bill Sweetser

**Cyprus Casa Grande Corp.**

**Casa Grande** T10S R4E Sec. 25  
P.O. Box C-9, Casa Grande 85222 - Phone 623-1539 - Employees 162 - In situ leach copper mine - Roast Leach - Solvent extraction-electrowinning plant - Acid plant - Located 32 miles south of Casa Grande.  
Manager - Ravi Medhi

Administrative Manager - Carl McSpadden  
Plant Superintendent - John Kline  
Mine Superintendent - Kermit Behnke  
Chief Metallurgist - Sam Yang  
Administrative Supervisor - Joe Smith  
Quality Assurance Supervisor - Troy Pool

**Cyprus Miami Mining Corp.**

**Miami** T1N R14E Sec. 24, 25, 26, 35  
P.O. Box 1559, Claypool 85532 - Phone 473-7150 - Employees 1013 - Open pit oxide copper mine - Heap leach - Dump leach - Solvent extraction - electrowinning plant - 120,000 TPY Smelter - Acid plant - Electrolytic refinery - Electrolytic refinery - 100,000 TPY continuous rod plant. The 24,000 TPD concentrator is inactive.

Vice President & General Manager - Dennis Mortensen  
Public Relations Director - Dean Lynch  
Manager, Technology - Ken Larson  
Manager, Mining Operations - Carl Waggoner  
Manager, Smelter/Rod Plant Operation - Al Tittes  
Manager, Technical Services - Noel Gillespie  
Manager, Plant Operations - Howard Bardwell  
Manager, Human Resources - Chuck Rising  
Manager, Administration - Randy Hoffman  
Supervisor, General Accounting - Joe Bost  
Superintendent, Leaching Operations - Gerald F. Fountain  
Superintendent, Tankhouse - Mark Peabody  
Superintendent, Plant Services - John C. Lorenzen  
Superintendent, Rod Plant - Luis Constandse  
Superintendent, Projects - John Chism  
Superintendent, Metallurgical Control - Eric Selley  
Superintendent, Environmental Services - Tom Larsen  
Superintendent, Smelter Operations - Don Nelson  
Superintendent, Smelter Maintenance - Scott Vandela  
Superintendent, Smelter Process Control - Robert Tunis  
Superintendent, Smelter Technical Services - Larry Lee  
Superintendent, Smelter Resource Recycling - Larry LeCompte  
Materials Management - Hugo Schriewer

**Cyprus Gold Company**

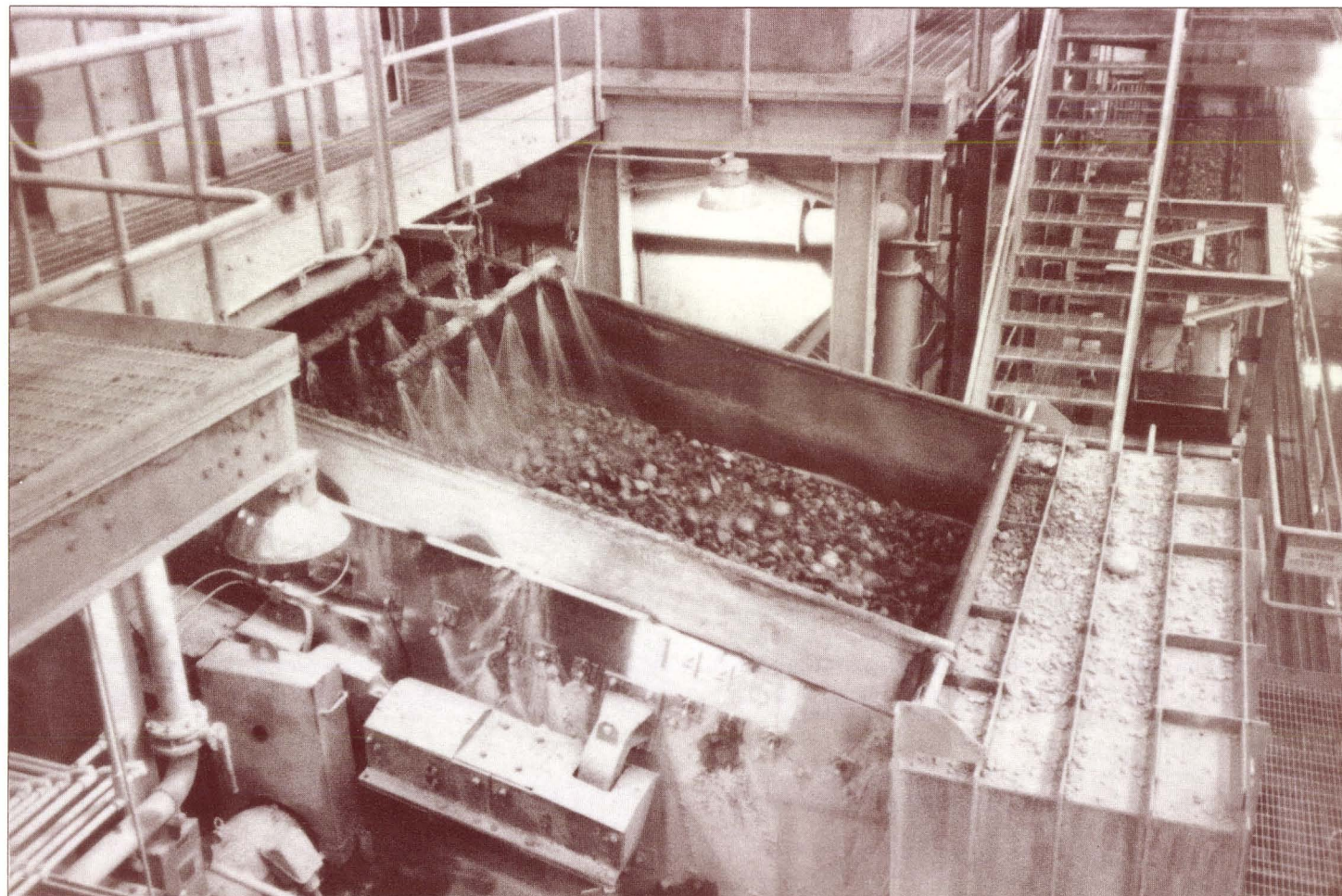
**Cyprus Copperstone Gold Corp.**

**Copperstone** T6N R20W Sec. 12  
P.O. Box AI, Parker 85344 - Phone (619) 665-9261 - Employees 115 (Includes 60 Morrison-Knudsen contract miners) - Located 12 miles north of Quartzsite - Open pit gold mine - Cyanide agitation leach - Rated capacity 2,850 TPD.

Resident Manager - M.L. Schroder  
Plant Superintendent - K.G. Markkola  
Administrative Supervisor - M.A. Browning  
Mine Superintendent - G.R. Burns  
Chief Assayer and Metallurgist - J.A. Cole  
Geologist - G.L. Kelsey



Reymert silver-bearing silica flux quarry.



Autogenous mill discharge at Cyprus Bagdad.

Senior Mine Engineer - J. Hatrick  
Mining Engineer - S. Anderson  
Mill Maintenance Supervisor - E.P. Sours  
Operation Supervisor - G.R. Eastham  
Construction Supervisor - D.F. Douglas  
Human Resources and Safety Supervisor - S.P. Fullmer

**CYPRUS MINES CORPORATION**

(A subsidiary of Cyprus Minerals Company)

**Cyprus Bagdad Copper Corp.**

**Bagdad** T 14N R9W Sec. 4, 5, 6 T15N R9W Sec. 28  
P.O. Box 245, Bagdad 86321 - Phone 633-2241 - Employees 600 - Open pit copper-molybdenum mine - 54,000 TPD concentrator - Dump leach-solvent extraction-electrowinning plant.

Vice President & General Manager - Harry W. Cosner  
Manager, Administration - R.J. Cunningham  
Manager, Mining - T.H. McNamara  
Manager, Plant Operations - G.G. Granger  
Manager, Community Services - D.L. Mead  
Manager, Human Resources - J.S. Bush

**Cyprus Sierrita Corp.**

**Sierrita** T18S R12E Secs. 7, 8, 9, 10, 16, & 17  
P.O. Box 527, Green Valley 85622 - Phone 791-2950 and 625-4800 - Employees 942, Sierrita open pit copper-molybdenum mine - 1,000 TPD concentrator - The inactive Esperanza open pit - 17,500 TPD concentrator - Ferromolybdenum plant - Rhenium plant - Dump leach - Solvent extraction - electrowinning plant - Located 32 miles south of Tucson.

Vice President & General Manager - T.J. O'Neil  
Manager, Administration - K.D. Comer  
Manager, Mining - D.L. Prael  
Manager, Copper Operations - R.R. Dorfler  
Manager, Molybdenum Operations - M.H. Khan  
Manager, Human Resources - A.J. Murray



Copper mine headframes in Miami, Arizona.

**DUNBAR STONE COMPANY**

**Dunbar Stone Plant** T21N R2W Sec. 3

P.O. Box 246, Ash Fork 86320 - 901 Lewis - Phone 637-2592 - Employees 63 - Quarries in Coconino, Maricopa, Mohave, and Yavapai Counties - Flagstone, marble and schist Stone processing plant in Ashfork - Marketed in and out of state.

President - G.E. Dunbar  
Vice President - W.B. Dunbar  
Maintenance Superintendent - Ron Dunbar

**ENERGY FUELS NUCLEAR INC.**

P.O. Box 36, Fredonia 86022 - Phone 643-7321  
Manager Mining Operations - Roger Smith

**Kanab North** T38N R3W Sec. 17

Employees 35 - Located 25 miles southwest of Fredonia - Underground uranium mine - Direct shipping ore - Mill in Blanding, Utah.

Mine Superintendent - Dan Thebeau

**Hermit** T38N R4W Sec. 17

Employees 15 - Located 30 miles southwest of Fredonia - Underground uranium mine - Direct shipping ore - Mill in Blanding, Utah - Nearing ore depletion - Reclamation scheduled to begin during 1990.

Mine Superintendent - John Stubblefield

**Pigeon** T38NR2W Sec. 5

Employees 15 - Located 20 miles south of Fredonia - Underground uranium mine - Direct shipping ore - Mill in Blanding, Utah - Nearing ore depletion - Reclamation scheduled to begin during 1990.

Mine Superintendent - Robert Towner

**Pine Nut** T36N R4W Sec. 21

Located 45 miles SW of Fredonia - Underground uranium mine - Developed - On Stand By.

**Arizona One** T36N R5W Sec. 22

Employees 15 - Located 45 miles southwest of Fredonia - Anticipate development during 1990.

Mine Superintendent - John Stubblefield

**Canyon** T29N R3E Sec. 20

Located 45 miles north of Williams - Underground uranium mine - On standby - Development awaiting regulatory approval.

**ENGELHARD CORPORATION**

**Chemical Division**

**Cheto No. 2** T21N R29E Sec. 23

Box 155, Sanders 86512 - Phone 688-2785 - Employees 6 - Located 6 miles southeast of Sanders - Surface strip bentonite mine - Main use is in fliters and catalysts, also used in agriculture - Shipped overseas and to Mississippi.

General Superintendent - Gary McDonald

**FLAGSTAFF CINDER SALES INC.**

**Wildcat Hill Pit** T21N R8E Sec. 9

P.O. Box 2415, E. Old Highway 66, Flagstaff 86003 - Phone 526-0801 - Employees 7 - Located 5 miles northeast of Flagstaff - Cinder quarry - Aggregate, landscaping.

President and General Manager - Bob Olivier

Sec./Treasurer (Sales and Office Manager) - Mary Lou Oliver

**GSA RESOURCES INC.**

P.O. Box 509, Cortaro 85652 - Phone 297-4330 - Employees (including contractors) 16.

President - Ted H. Eyde

Vice President - Daniel T. Eyde

**Lyles Mine** T13N R6W Secs. 11, 12

Open pit clay mine located west of Kirkland - Crude clay useds as viscosifiers and thickeners in pharmaceuticals and cosmetics.

**Grace Chabazite Mine** T12S R29E Secs. 1, 2, 12

Open pit mine located 13 miles north of Bowie - Crude chabazite used for cation exchange media and specialty absorbants and deoderizers - Shipped out of state for further processing.

**Cheto Section 16 Mine** T21N R29E Sec. 16

Open pit calcium bentonite mine located 5 miles southeast of Sanders - Shipped out of state for further processing into desiccants.

**Burro Creek Clay** T14N R10W Sec. 7

Open pit saponite clay mine located 8 miles southwest of Bagdad along Burro Creek - Saponite clay shipped out of state for manufacture into viscosifiers for industrial lubricants and coatings.

**HARBORLITE INC.**

**Superior Perlite** T2S R12E Sec. 9

P.O. Box 960, Superior 85273 - Phone 689-5723 - Employees 7 - Plant located 2 miles west of Superior on Silver King Mine Road south of railroad track - Perlite from open pit mines - Markets in California, Michigan and Wyoming - Used in filtering for pharmaceuticals, chemicals, sugar and beverages - Also used as agricultural fertilizer carrier.

Plant Manager - Bill Smith

**HARLEY GRAY STONE COMPANY**

**Flagstone Quarriers**

P.O. Box 323, Paulden 86334 - Phone 636-2436 - (Prescott 445-8253) - Employees 10 - Quarries located 8 miles northeast of Drake - Flagstone, cut stone - Marketed locally and throughout the United States; exported.

Owner - Harley Gray

Owner - Carl Gray

**HUDMAN STONE**

**MC Canyon Quarries** T19N R1E Sec. 23

9640 W. Picture Rocks Road, Tucson 85743 - Phone 622-6008 - Employees 10 - Quarries located 8 miles northeast of Drake - Flagstone for decorative use - River run and surface flagstone for building use.

General Manager - Roger Hudman

**KOCIDE CHEMICAL**

**Van Dyke Mine** T1N R15E Sec. 30

P.O. Drawer D, Miami 85502 - Phone 473-2421 - Employees 9 - In situ leach and cement copper plant - Production 4,000,000 pounds of contained copper further refined at Casa Grande plant to produce CoSo<sub>4</sub>.

Vice President, Mining - Jimmy Whatley

General Manager - Paul Musgrove

Operations Manager - Ross Hoar

Office Manager - Ruth Joplin

**LITTLE HILL MINES INC.**

**Gold Hill Mine** T10S R15E Sec. 5

P.O. Box 332, Oracle 85623 - Phone 896-2245 - Employees 5 - Open pit mine - Located 6 miles southwest of Oracle - Copper bearing silica flux for copper smelter.

President - Dave McGee

General Superintendent - Art Coughanour

**McKUSICK MOSAIC**

**Weary Lode Mine** T1S R15E Sec. 22

Route 1, Box 25-D, Globe 85501 - Phone 425-5051 or 425-8428 - Employees 4 - Surface clay mine located 5 miles south of Golbe - Tile and wind chime clay, cosmetic additives, sealant, and slip glazing material.

Owners - Robert & Charmion McKusick

Co-owner - Kathleen Condit

**MAGMA COPPER COMPANY**

**Corporate Responsibilities**

P.O. Box M, San Manuel 85631 - Phone 385-3100

Chairman of the Board (New York) - Donald J. Donahue

President - Burgis Winter

Vice President Mining Operations - W. Glenn Martin

Vice President Planning & Development - Brad Mills

Controller - Bob Lemons

Treasurer - Bill Diggin

Corporate Director Personnel - Marsh Campbell

Corporate Director Environmental Affairs - Eldon Helmer

Public Relations Officer - Frank R. Harris

Manager, Rod Production - Lee Browne

Land Manager - Alex Acosta

**San Manuel Mine** T8S R16E Secs. 34 & 35

**San Manuel Concentrator, Smelter etc.** T9S R17E Sec. 32

P.O. Box M, San Manuel 85631 - Phone 385-3100 - Employees 3800 - Underground copper-molybdenum mine - In situ leaching - Open pit oxide copper mine - Heap leaching - Solvent extraction-electrowinning plant - 62,000 TPD concentrator - 800,000 TPY smelter with 2,000 TPD acid plant - Electrolytic refinery and rod plant.

Vice President & General Manger - T.E. Hearon

Manager, Mining - H.W. Seaney

General Plant Superintendent - Kay D. Parks

Director, Metallurgical Labs - S.K. Young

Manager, Engineering & Technical Services - J.R. Tinnin

Manager, Purchasing - Fred Hays

**Pinto Valley** T1N R14E Sec. 20

**Miami Tailings** T1N R15E Sec. 30

P.O. Box 100, Miami 85539 - Phone 425-7611 - Employees 650 - Open pit copper-molybdenum mine - 60,000 TPD concentrator - Dump leach - Solvent extraction-electrowinning plant. Tailings reclaim leach solvent extraction electrowinning plant.

Vice President Mining Operations - W. Glenn Martin

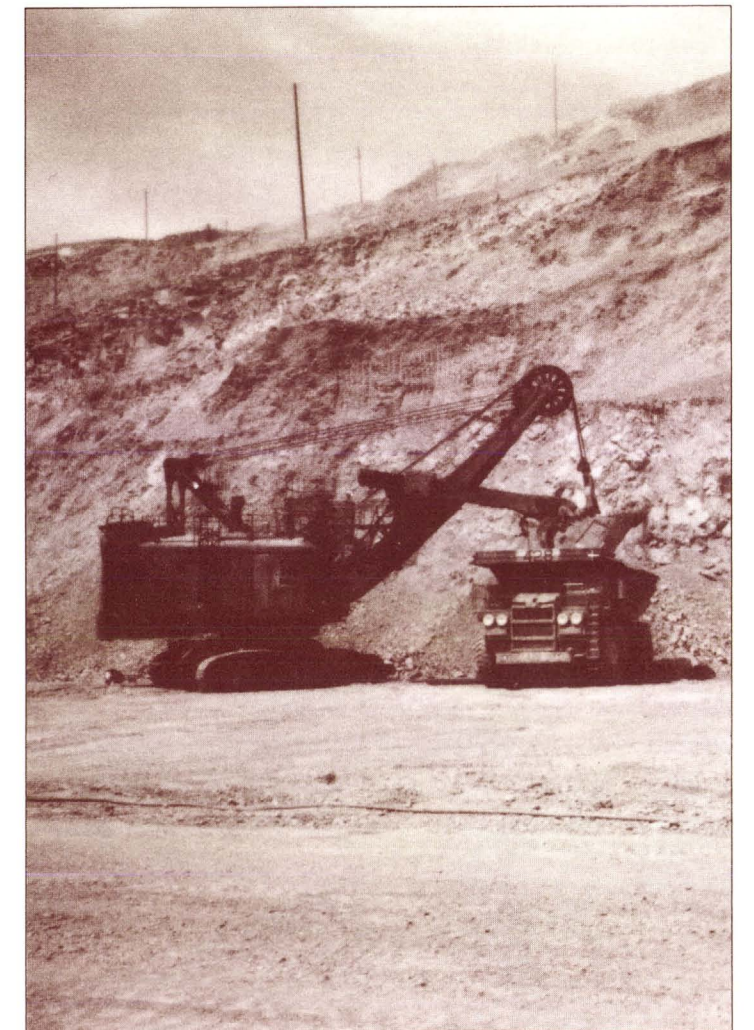
General Superintendent - W.G. Slack

Mine Superintendent - D.L. Goar

Concentrator Superintendent - Loren Hallin

Leaching Superintendent - J.R. Sosh

Manager, Purchasing - B.L. Beydler



170-ton haul truck and shovel at ASARCO's Ray Mine