



CONTACT INFORMATION

Mining Records Curator
Arizona Geological Survey
1520 West Adams St.
Phoenix, AZ 85007
602-771-1601
<http://www.azgs.az.gov>
inquiries@azgs.az.gov

The following file is part of the

Arizona Department of Mines and Mineral Resources Mining Collection

ACCESS STATEMENT

These digitized collections are accessible for purposes of education and research. We have indicated what we know about copyright and rights of privacy, publicity, or trademark. Due to the nature of archival collections, we are not always able to identify this information. We are eager to hear from any rights owners, so that we may obtain accurate information. Upon request, we will remove material from public view while we address a rights issue.

CONSTRAINTS STATEMENT

The Arizona Geological Survey does not claim to control all rights for all materials in its collection. These rights include, but are not limited to: copyright, privacy rights, and cultural protection rights. The User hereby assumes all responsibility for obtaining any rights to use the material in excess of "fair use."

The Survey makes no intellectual property claims to the products created by individual authors in the manuscript collections, except when the author deeded those rights to the Survey or when those authors were employed by the State of Arizona and created intellectual products as a function of their official duties. The Survey does maintain property rights to the physical and digital representations of the works.

QUALITY STATEMENT

The Arizona Geological Survey is not responsible for the accuracy of the records, information, or opinions that may be contained in the files. The Survey collects, catalogs, and archives data on mineral properties regardless of its views of the veracity or accuracy of those data.

PRINTED: 02/06/2003

ARIZONA DEPARTMENT OF MINES AND MINERAL RESOURCES AZMILS DATA

PRIMARY NAME: FLORENCE LEAD-SILVER

ALTERNATE NAMES:

CARDINAL CLAIMS
HOGTOWN CLAIMS
SPENCER TUNNEL

PINAL COUNTY MILS NUMBER: 364B

LOCATION: TOWNSHIP 5 S RANGE 13 E SECTION 12 QUARTER E2
LATITUDE: N 33DEG 00MIN 27SEC LONGITUDE: W 110DEG 57MIN 57SEC
TOPO MAP NAME: KEARNY - 7.5 MIN

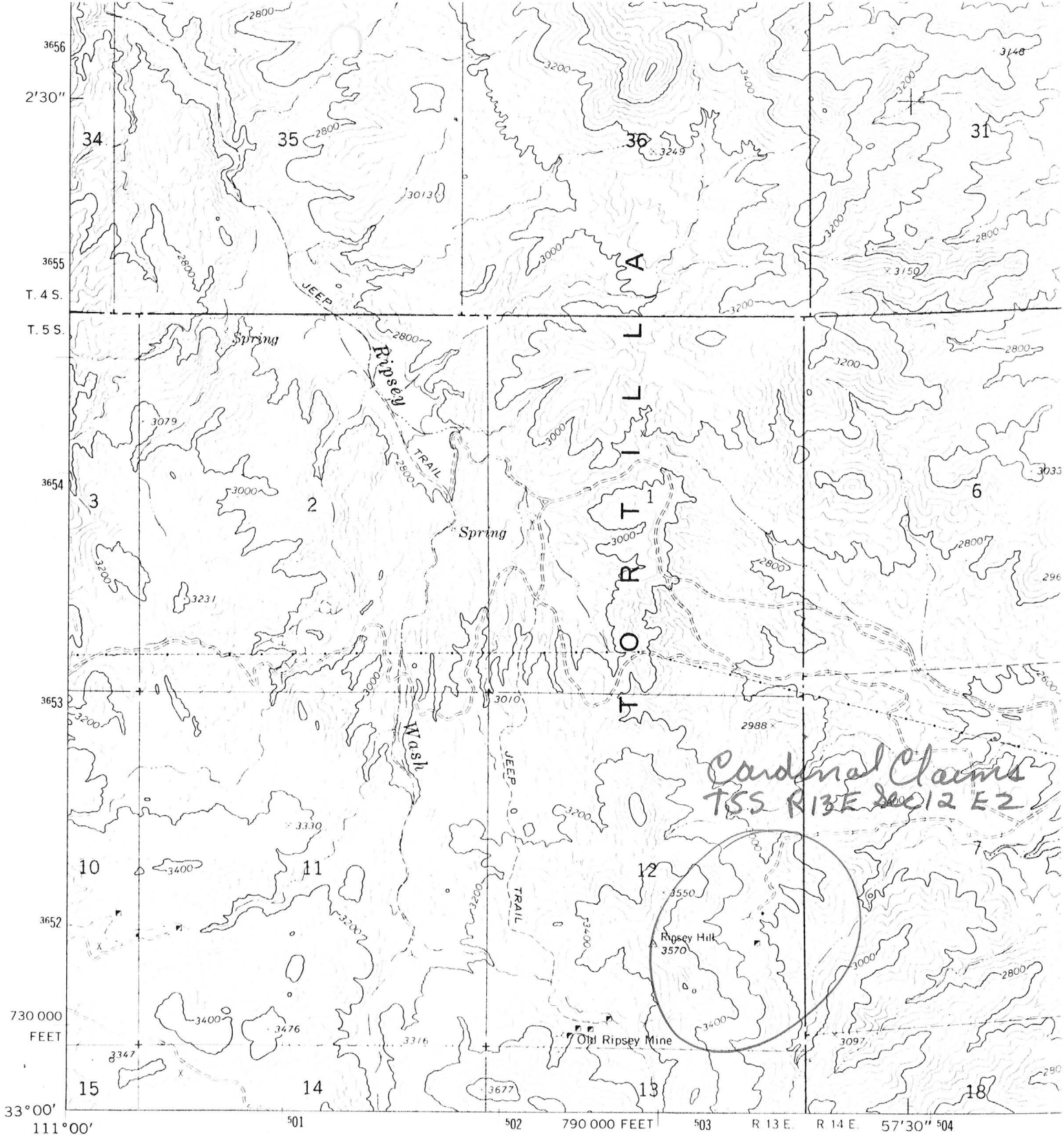
CURRENT STATUS: EXP PROSPECT

COMMODITY:

LEAD GALENA
GOLD
MOLYBDENUM WULFENITE
SILVER
SPECIMENS WULFENITE

BIBLIOGRAPHY:

BLM AMC FILE 100620
ADMMR FLORENCE LEAD-SILVER FILE
MINES HANDBOOK 1931, VOL 18, P 314
TYPE LOCALITY FOR HEMIHDRITE - RAY GRANT



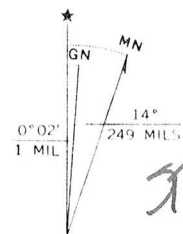
Mapped, edited, and published by the Geological Survey

Control by USGS and USC&GS

Topography by photogrammetric methods from aerial photographs taken 1962. Field checked 1964

Polyconic projection. 1927 North American datum
 10,000 foot grid based on Arizona coordinate system, central zone
 1000 meter Universal Transverse Mercator grid ticks, zone 12, shown in blue

Fine red dashed lines indicate selected fence lines.



UTM GRID AND 1964 MAGNETIC NORTH DECLINATION AT CENTER OF SHEET

Hearny 7.5

FOR SALE
A F

CARDINAL CLAIMS

PINAL COUNTY

NJN WR 2/13/87: Andy Clark visited and reported that he has been doing sampling recently at the Cardinal Claims, MILS #364B, Pinal County. He found galena and wulfenite and had silver results from an assay. He plans to mine wulfenite specimens from the property.

NJN WR 4/15/88: In the process of researching information on the properties believed to once have been those of the Florence Lead-Silver Company (card) in Pinal County for Darlene and James Hosea, the Cardinal Claims mine file was changed to the Florence Lead-Silver (file) and some additional names were added to the list of alternate names for the property. Darlene Hosea reported their claims on the deposit are the Hogtown 1-8 and that the old workings are on the same vein as the Old Ripsey property to the west. She was asked for additional data on the property as they continue development.

- The name of the claim is TOWNSHIP 2
- The SW corner of the claim is 600 feet NE of a survey monument or permanent natural object described as SE COR. PATENT EXTENSION 1261A
- The type of location monument is 2x2 STAKE
The type of corner and end monuments are ORANGE & WHITE 2"x2"x5" WOOLEN STAKES
- The bearing and distance between the corners of the claim are beginning at the NW corner of the claim, 600 feet in a NE direction to the NE corner, then 1500 feet in a SE direction to the SE corner, then 600 feet in a SW direction to the SW corner, then 1500 feet in a NW direction to the point of beginning.

MAP

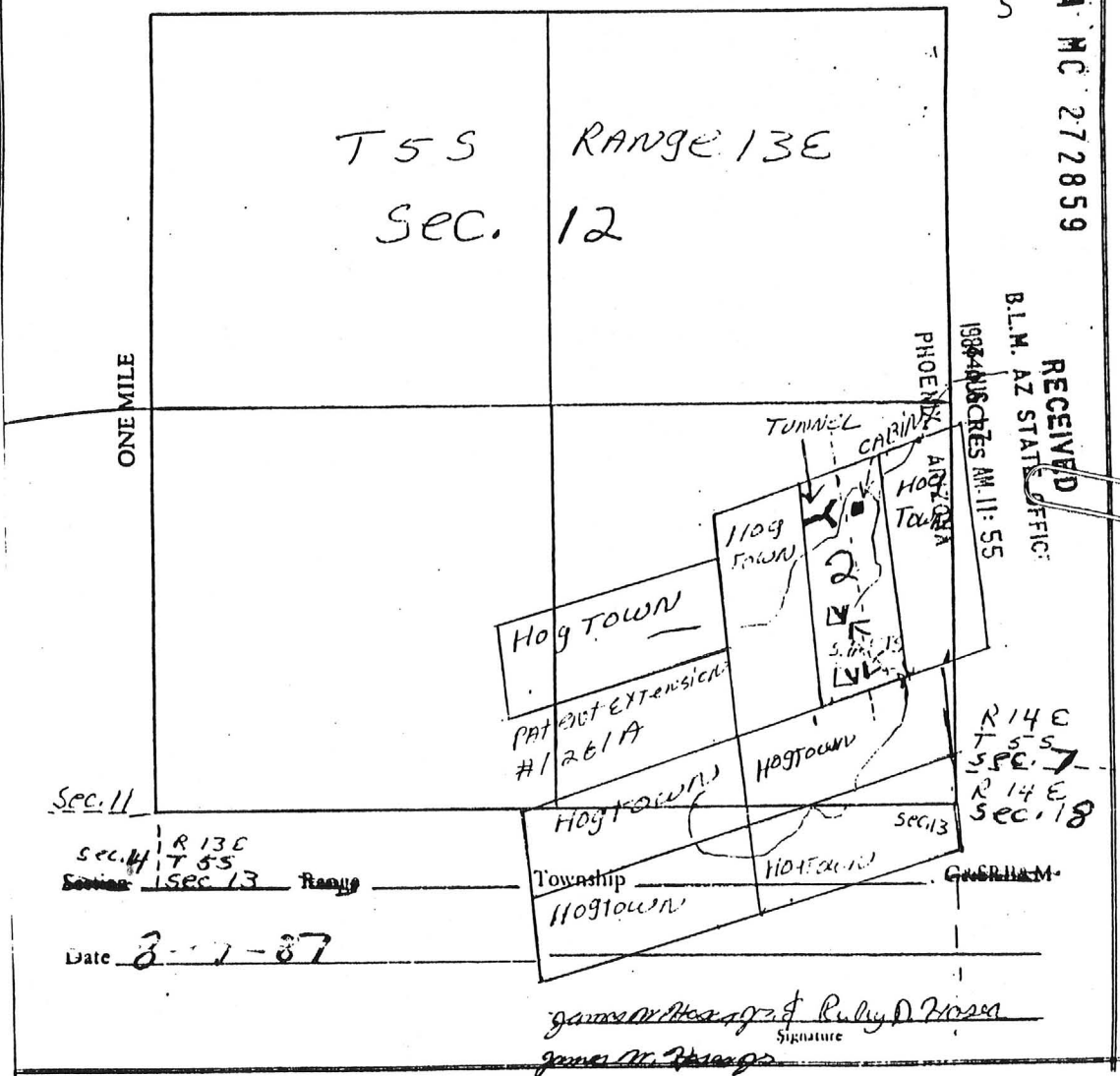
One inch = One thousand feet

North Arrow 

ONE MILE

L.A. MC 272859

9



Sec. 11
 Sec. 14 R 13 E
 T 5 S
 Section 13 Range
 Date 3-7-87

James M. [Signature] & *Ruby D. [Signature]*
 Signature

ACUNN 27

1. The name of the claim is TOWNSHIP 2

2. The SW corner of the claim is 600 feet NE OF SE COR. PATENT EXTENSION 1261A

3. The type of location monument is 2x2 STAKE
The type of corner and end monuments are ORANGE & WHITE 2"x2" x 5' WOODEN STAKES

4. The bearing and distance between the corners of the claim are beginning at the NW corner of the claim, 600 feet in a NE direction to the NE corner, then 1500 feet in a SE direction to the SE corner, then 600 feet in a SW direction to the SW corner, then 1500 feet in a NW direction to the point of beginning.

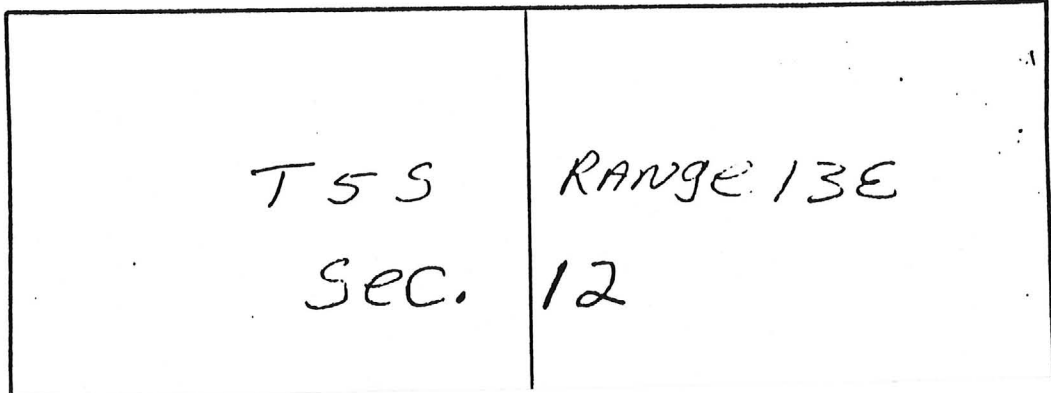
MAP

One inch = One thousand feet

North Arrow



ONE MILE



W

S

L.A. MC 272859

9