



LevelOne IP Camera Installation Guide For FCS-9032 (v1.8-Lite)



Quick Installation Guide

This guide is for :

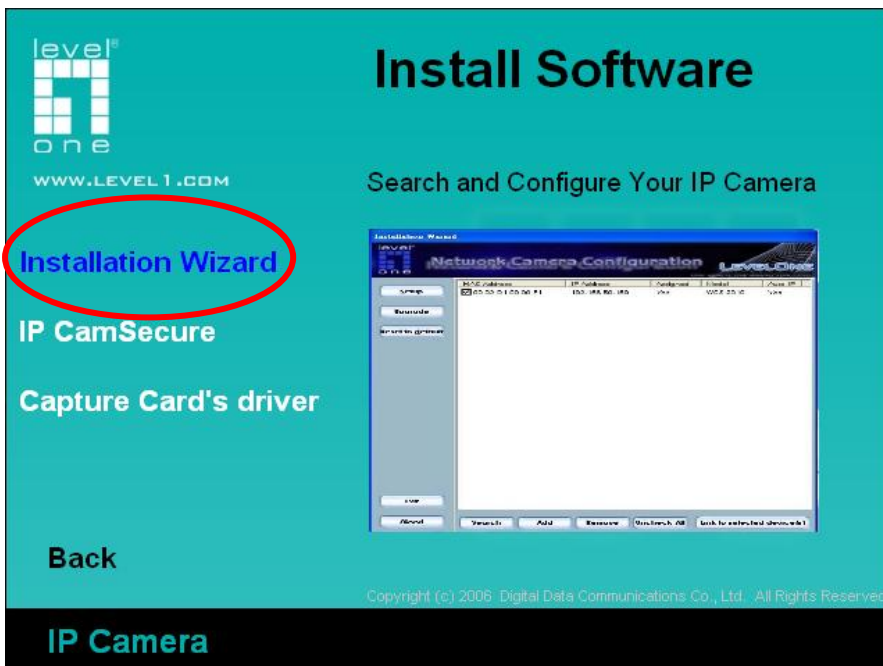
- FCS-1010/1030/1040/1050/1060/1070/3000/
- WCS-2010/2030/2040/2060/2070/
- WCS-0010 / FCS-0010 / FCS-1081 / FCS-3021 / FCS-4XXX

Software Installation

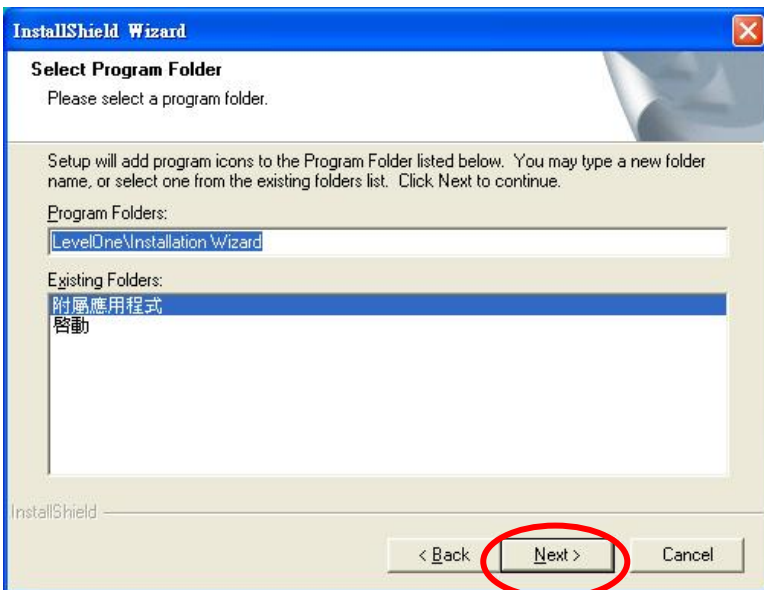
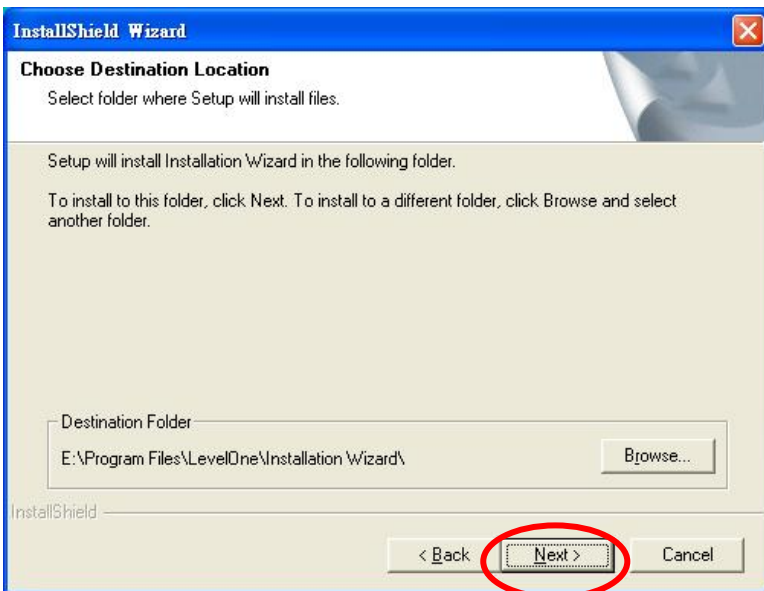
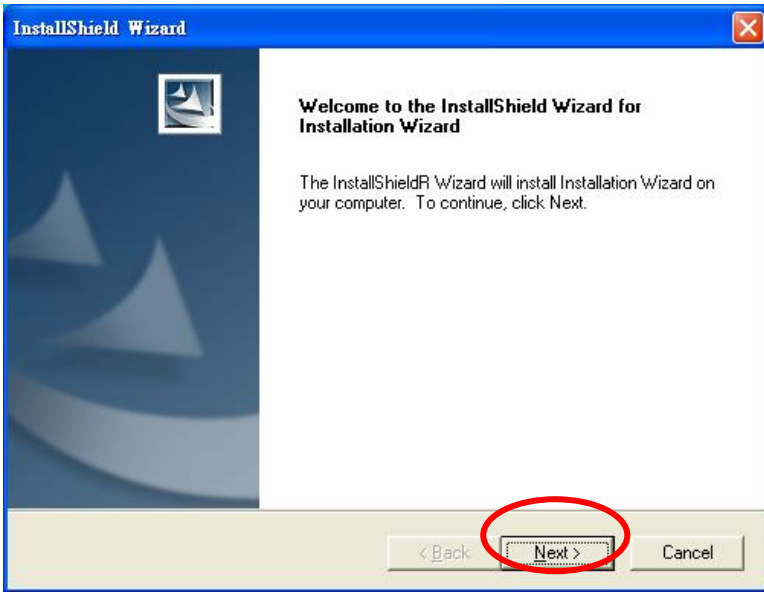
1. Please insert the CD-ROM which comes with LevelOne IP camera package.
2. Once inserted, the installation page would pop up. If no pop up is seen, please go to the CD-ROM directory and click on **"AutoRun.exe"**.
3. Click on **"Install Software"**



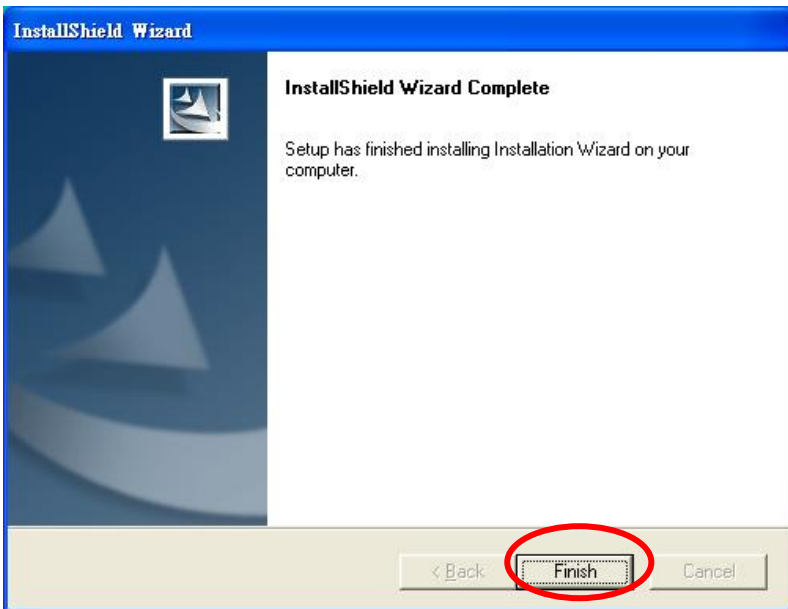
4. Click on **"Installation Wizard"**



5. Follow the wizard by clicking "Next"



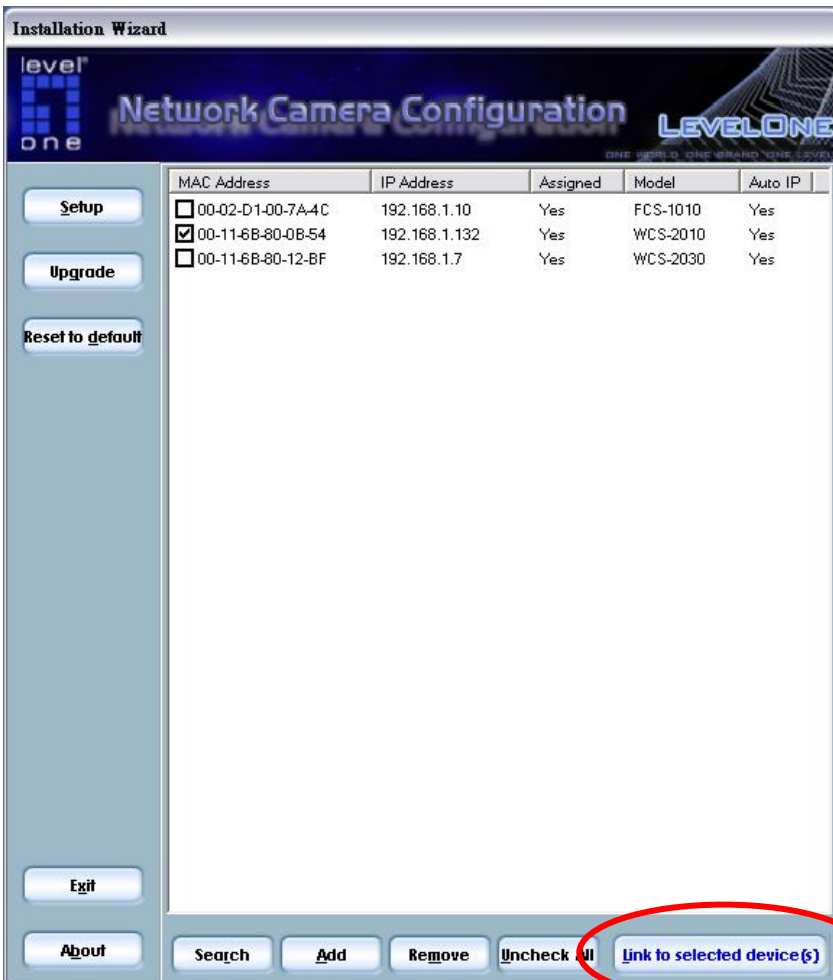
6. Click on **“Finish”** to complete the installation



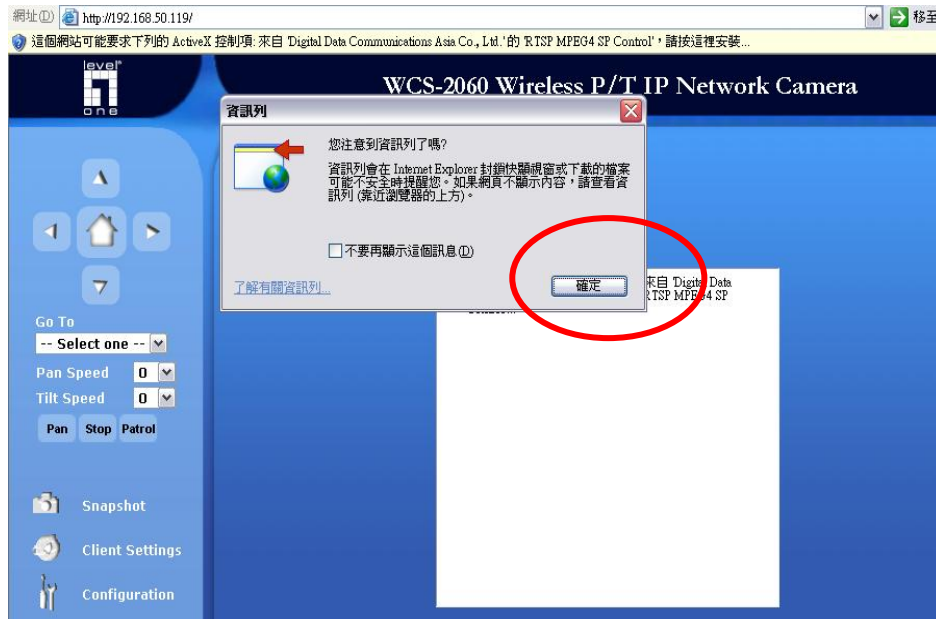
7. Click on Installation Wizard icon on your Windows Desktop to launch the program.



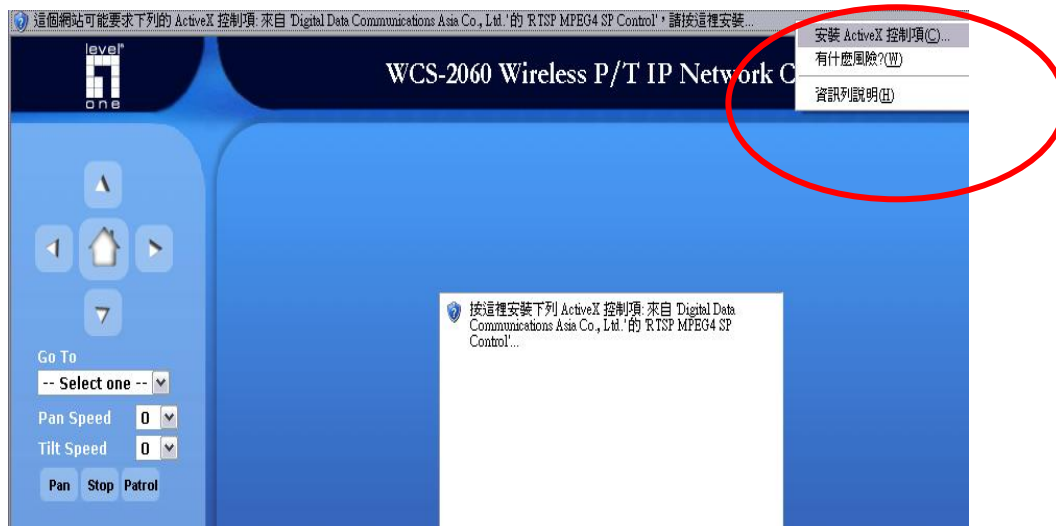
8. Choose the IP Camera by MAC address and click **“Link to selected device”**.



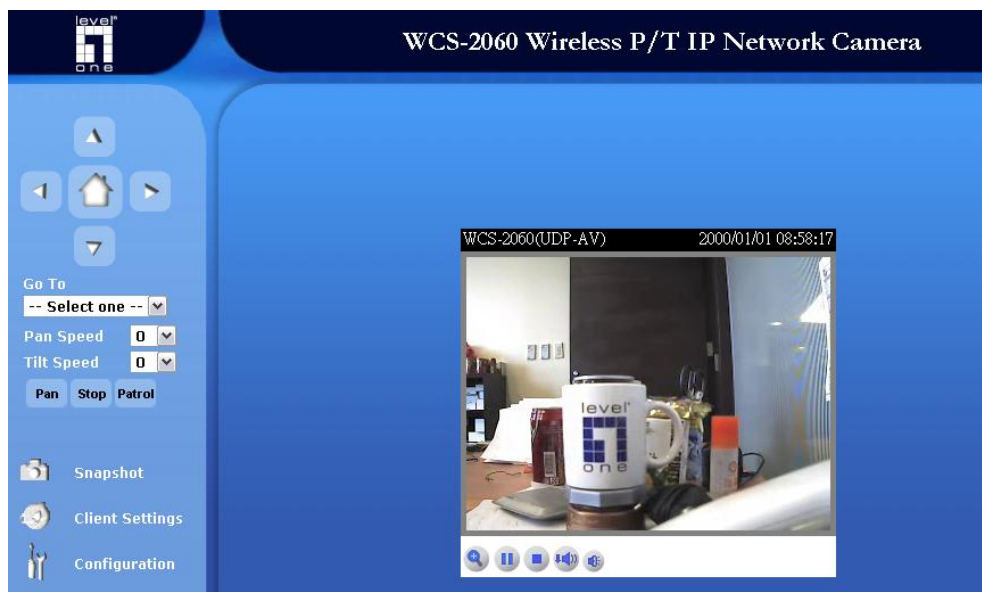
9. At initial login, a window would pop up asking user to install Active-X. Click "Yes" to proceed.



10. Install Active-X.



11. Once active-X is installed, the video stream of IP camera would be displayed on screen.



12. The installation of wired connection of IP camera is completed at this point.

Installation of wireless service of IP camera

This part of guide applies to WCS-2010/2030/2040/2060/2070

1. Make sure a wireless service is already up and running; the service is usually from wireless AP or router.
2. Login to the web interface of IP Camera and go to its Wireless LAN page

The screenshot displays the web configuration interface for a LevelOne WCS-2060 wireless IP camera. The browser window shows the URL `http://192.168.10.101/setup/config.html`. The interface is titled "LEVELONE WCS-2060 WIRELESS P/T IP NETWORK CAMERA Configuration". A sidebar on the left contains a menu with "Wireless LAN" highlighted by a red arrow. The main configuration area is titled "WLAN configuration" and includes the following fields:

- SSID: default
- Wireless mode: Infrastructure
- Channel: 6
- TX rate: Auto
- Security: None

Callout boxes provide additional guidance:

- SSID: Enter the SSID of your wireless AP.
- Wireless Mode: Infrastructure, if your network is in multiple AP clients to AP mode. Ad-Hoc: If your network is in point to point connection.
- Security: Please match the security setting of your AP.

3. Configure SSID, wireless mode and security parameters to match that of AP or router.
4. Press "save" button after configuration.
5. Unplug the power cord and RJ-45 Ethernet cable from the IP Camera. Then plug the power cord back in and LevelOne IP camera would automatically connect to the preset wireless service.

IP CamSecure QIG

Note: Please check LevelOne web site, www.level1.com, to see if any new version of IP CamSecure software is available.

1. Please insert the CD-ROM which comes with LevelOne IP camera package.
2. Once inserted, the installation page would pop up. If no pop up is seen, please go to the CD-ROM directory and click on **"AutoRun.exe"**.
3. Click on **"Install Software"**

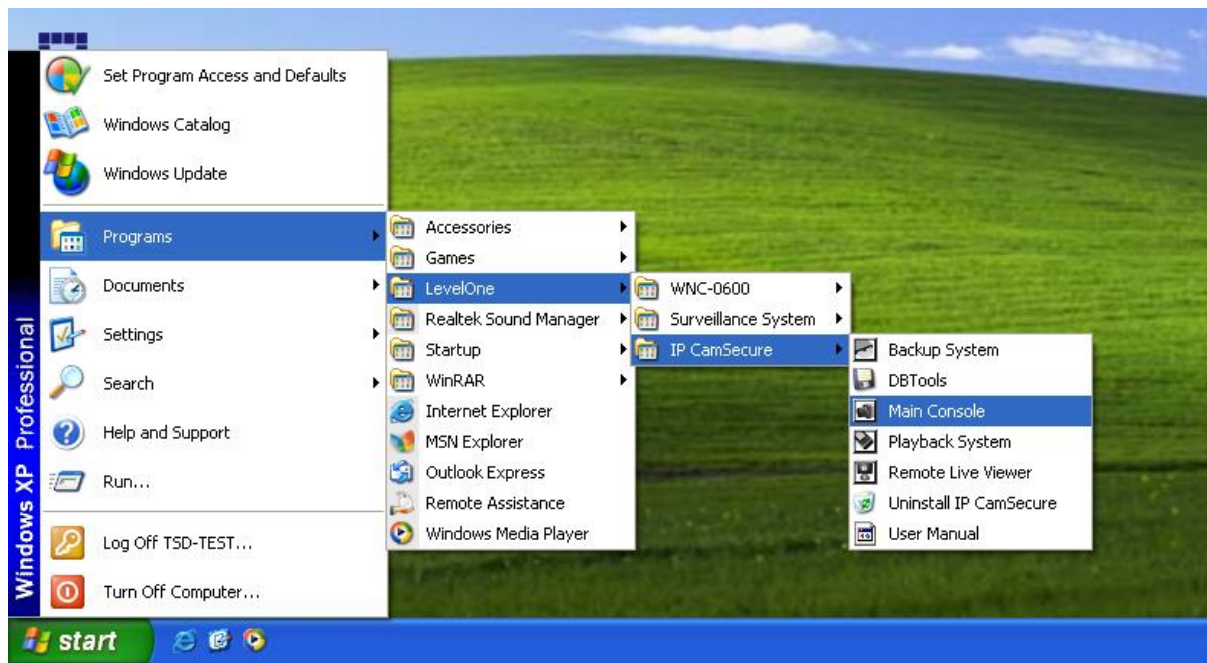


4. Click on **"IP CamSecure"**



5. Follow pop-up windows to finish installing IP CamSecure software.

6. After successful installation, the software is accessible at **Start → Program s→ LevelOne → IP CamSecure → Main Console**.

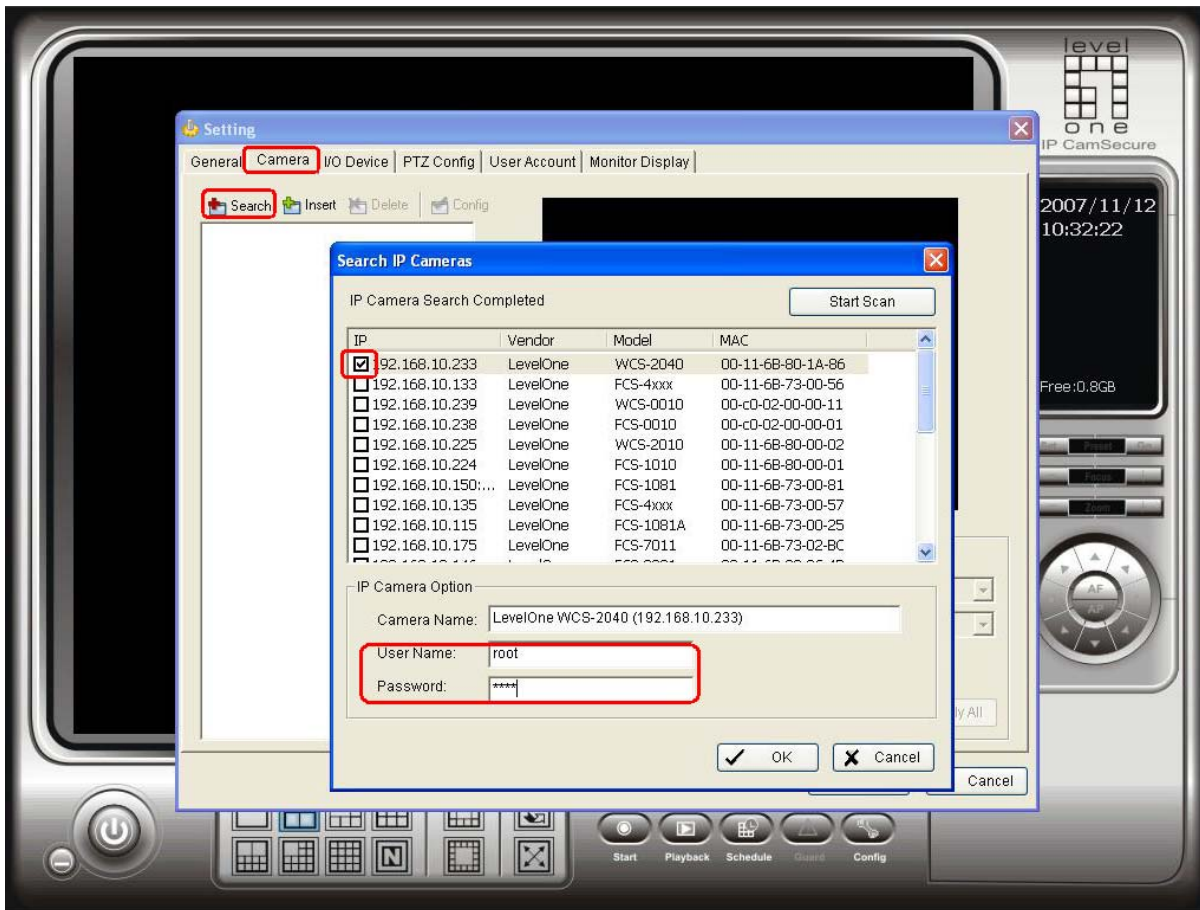


7. Launch the program and you would be asked for user name and password. For the first time, please enter:
Username: admin
Password: (any password you want)
Confirm Password: (repeat the password just typed)

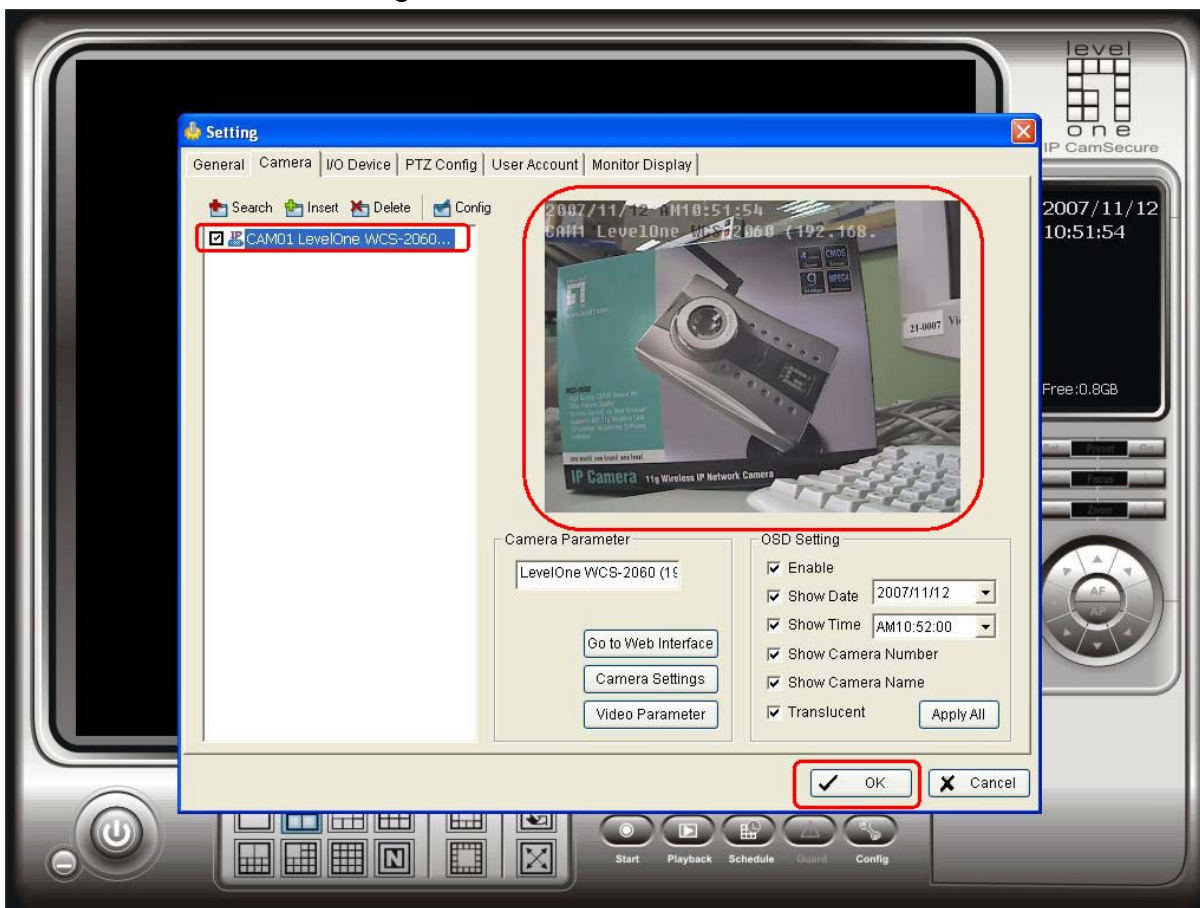
8. Main console screen would be displayed as shown. Select **Config → Setting**



- Go to Camera menu, and click on **"Search"**. All supported IP cameras available on network would be listed.
- Select the desired IP camera by checking the box on the left and enter the user name and password for that IP camera.



- Once an IP camera is successfully added, it is listed in the left column and its video stream would show in the window at right.



12. Click **OK** to return to main console screen. If more than one IP cameras are added, you can use the circled icons to change display pattern to view multiple IP cameras simultaneously.

