

MindManager®

Server

Auto-installer Instructions for Microsoft® SharePoint®



Contents

Auto-install with SharePoint	1
What gets installed.....	1
Uninstall previous versions of Mindjet.....	1
Auto-install	4
Activate MindManager Server Templates.....	8
Activate and use the Web Part	8
Install the IFilter	12

AUTO-INSTALL WITH SHAREPOINT

MindManager Server provides integrated map support to your SharePoint 2010 and 2013 environments by adding the following functionalities:

- **View & Edit:** View and edit any Mindjet map (.mmap or .xmmap file) stored in a document list from the browser.
- **Viewer Web Part:** Display a specific map (.mmap or .xmmap file) in a SharePoint page.
- **Create New Maps:** From a document library, create new map files.

What gets installed

When you run the auto-installer, the following SharePoint solutions are deployed:

1. **Mindjet.SharePoint.<SharePoint Version>.wsp** adds:
 - The on-premise Administration screens;
 - A handler reference to the application **web.config** (Note: this change will cause an application reset);
 - ISAPI service handlers for the SharePoint 2010 and 2013 server;
 - A Mindjet folder to the Layout directory for Mindjet-specific files;
 - SafeControl to **web.config** for the application.
2. **Mindjet.SharePoint.FileTypeAssociator.wsp** adds:
 - Branded icons for Mindjet file types to the **DOCICON.XML** file.

Uninstall previous versions of Mindjet



Note: if you have a previous version of **Mindjet** installed on your SharePoint server, please use the instructions below to remove the application from your system before installing MindManager Server.

Copy the MindManager Server auto-installer file:

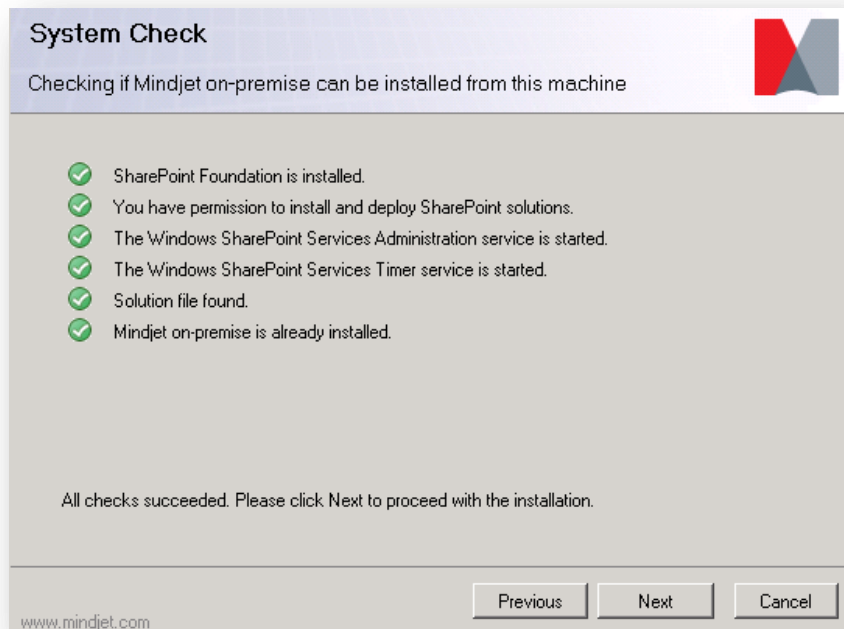
- In a server farm environment, copy the file into a folder on the Web Front End.
- In a single server environment, copy the file into a folder on the Application server.

Example: **C:\Mindjet**

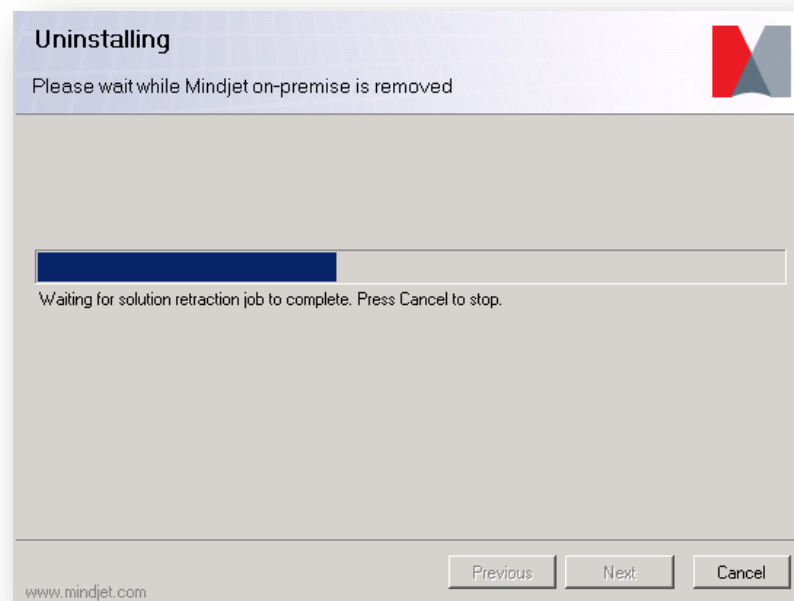
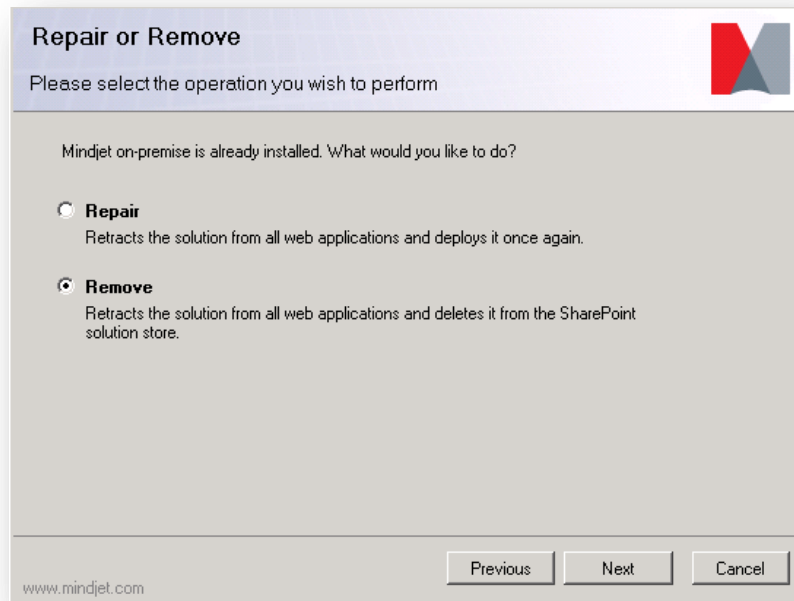
3. Double click **MindManager Server installer**.
4. Review all System Checks to determine that they succeeded, then click **Next**.



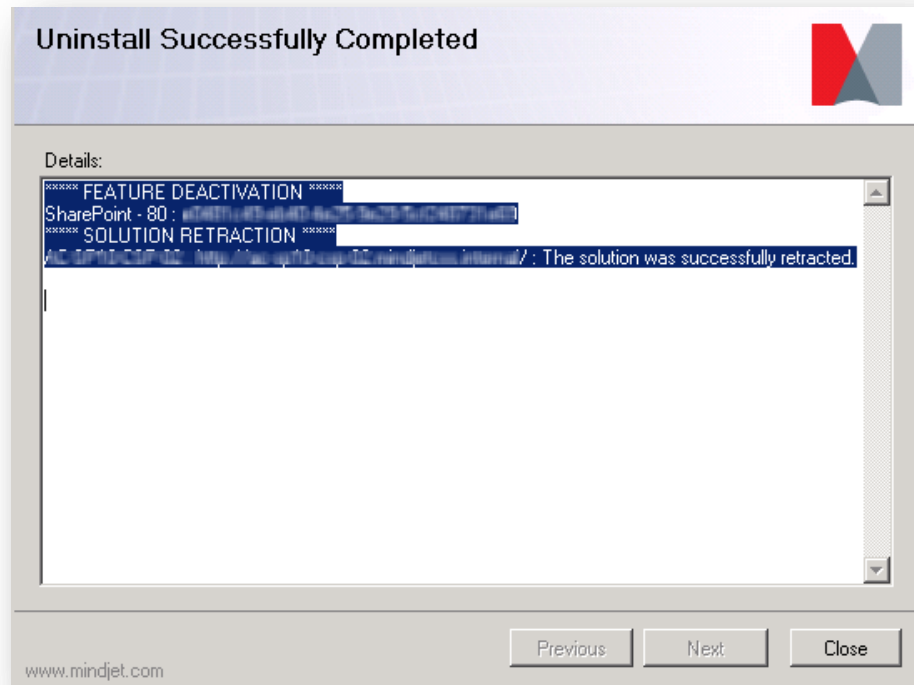
Note: If a system check fails, correct or enable the service that failed. Also check that you are performing the install as the Administrator.



5. Select **Remove** and click **Next** to begin uninstalling.



- When you have successfully uninstalled Mindjet, the confirmation page will appear. Click **Close** to exit.



Auto-install



Note: if you have a previous version of **Mindjet** installed on your SharePoint server, please use the instructions in the previous section (page 1) to remove the application from your system before installing MindManager Server.

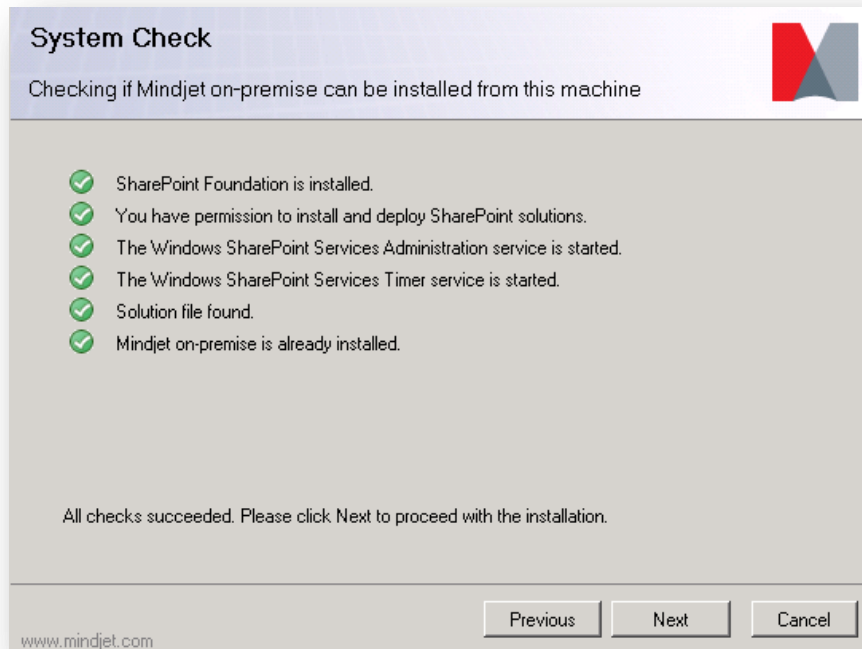
- Copy the MindManager Server auto-installer file:
 - In a server farm environment, copy the file into a folder on the Web Front End.
 - In a single server environment, copy the file into a folder on the Application server.

Example: **C:\Mindjet**

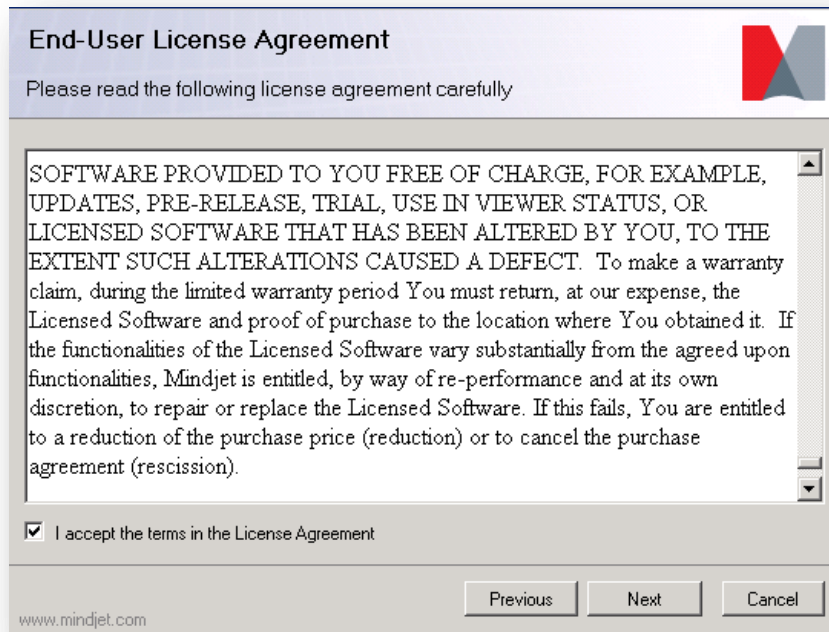
2. Double click **MindManager Server installer**.
3. Review all System Checks to determine that they succeeded, then click **Next**.



Note: If a system check fails, correct or enable the service that failed. Also check that you are performing the install as the Administrator.

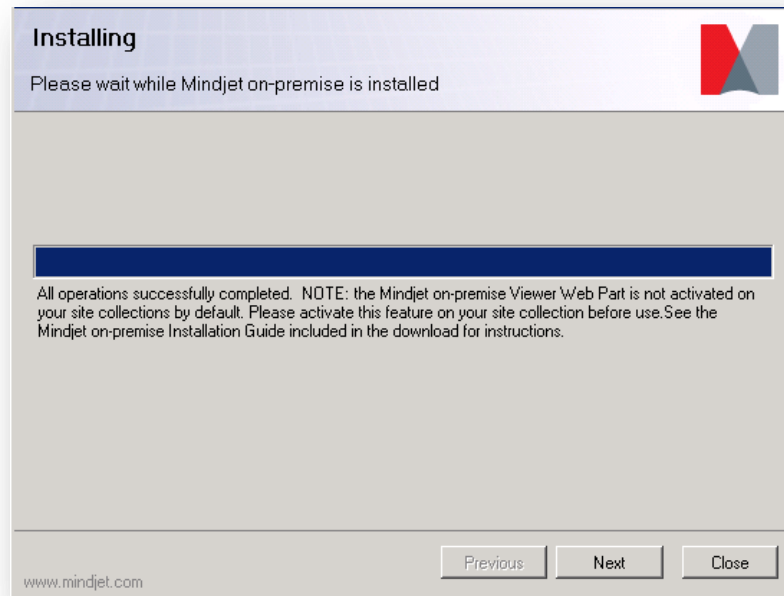


4. Review the End-User License Agreement (EULA), accept, and click **Next**.



5. Enter the license key if you have one; otherwise leave blank. Also enter the Administrator email address. Click **Next**.
 - o If the Administrator does not enter a license key into the product during installation, the installed system will be a trial version of MindManager Server. Trial versions expire 30 days after the installation date. *Note that you can enter the license key at a later date, after installing the Central Administrator.*
 - o The Administer email address is displayed in error messages sent to users, so that they can contact the Administrator directly. Warning messages relating to license key expiration or license non-compliance also contain this email address.

7. When installation is completed, review any additional installation steps required in the dialog box. Click **Next** to exit.



Activate MindManager Server Templates



Note: You need to activate templates on *each* SharePoint site where you wish to enable MindManager Server.

1. On the site collection where Mindjet Templates are desired, go to Site Actions > Site Settings.
2. Under Site Collection Administration, select **Site Collection Features**.
3. Find the “Mindjet Templates” feature, and click **Activate**.

Activate and use the Web Part

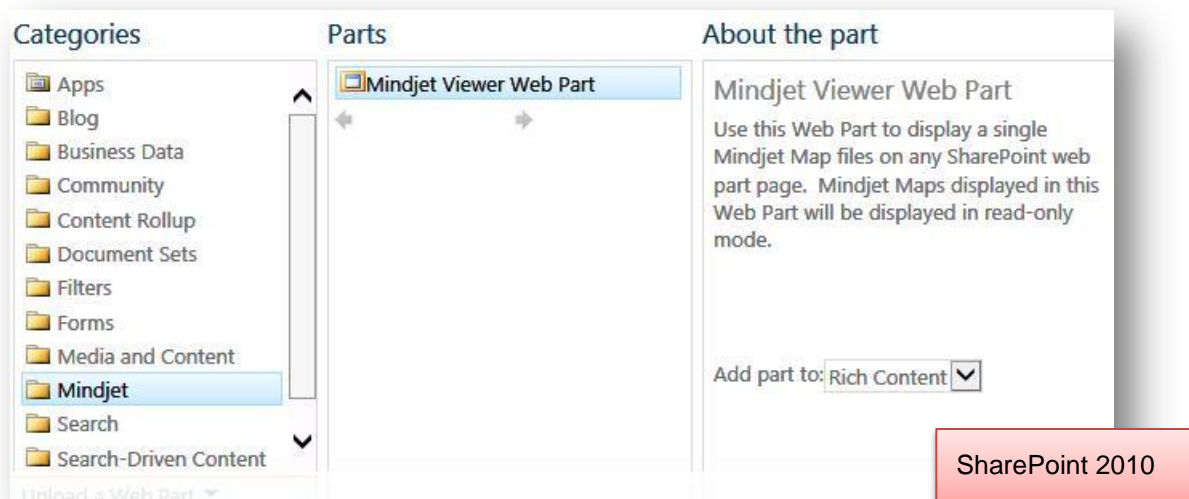
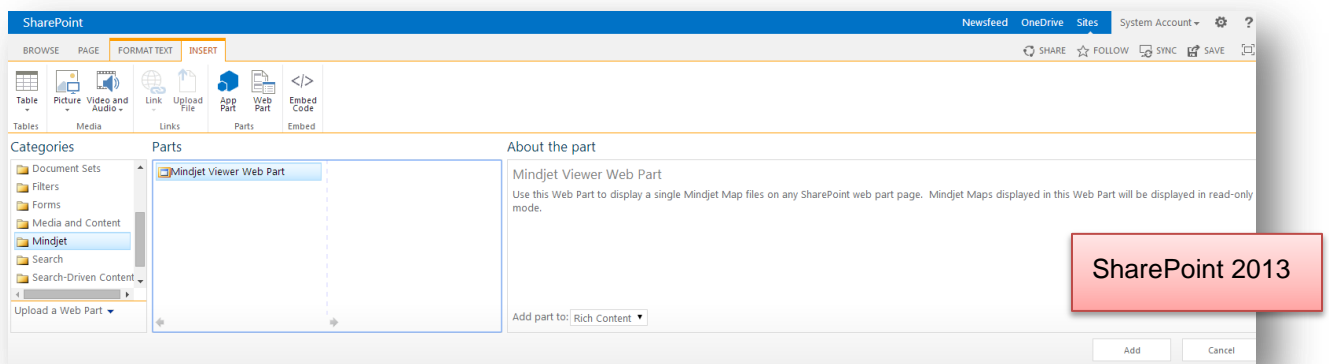


Note: You need to activate the Web Part on *each* SharePoint site where you wish to enable MindManager Server.

Activate the Web Part in the Site Page

1. In the upper left corner in the Site Actions menu, click **Site Settings**.
2. Click **Site Collection Administration**, and then click **Site Collection Features**.
3. Scroll down, select **Mindjet Viewer Web Part**, and then click **Activate**.

You should now see a “Mindjet” category in the Insert Web Part menu on your SharePoint site:



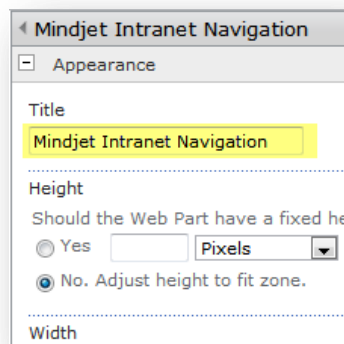
Use the Web Part

When you insert the Web Part on the page, you must modify it to indicate the map you want it to display.

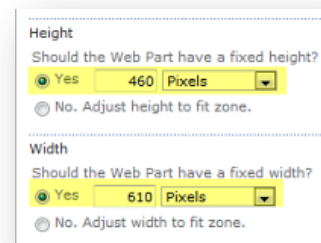
In the Web Part's upper-right corner, click the pull-down, and then click **Edit Web Part**.



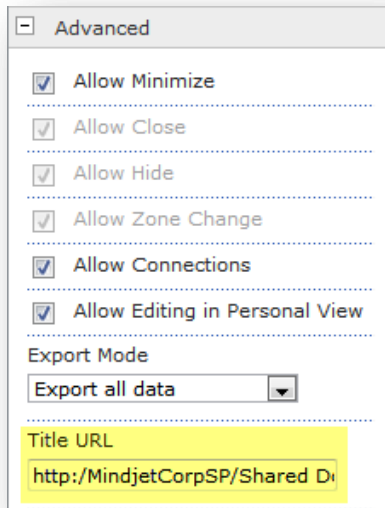
Define the properties of the Web Part:



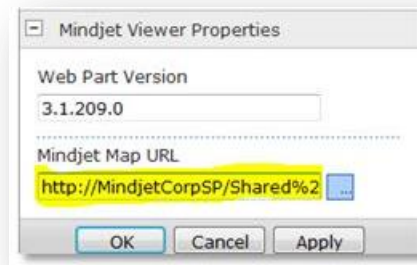
Enter the Title text



Specify the size



Link to the map in the title
(so the user can click on the title to open
the map in Mindjet)



Add the map URL in the Viewer Properties,
to specify which map to display

Install the IFilter



Note: The IFilter must be manually installed and stored on every Indexing server in the SharePoint farm.

The final step of auto-installation for MindManager Server is installing the IFilter.

1. Copy the IFilter auto-installer to all SharePoint Search server(s).
2. For each server, double click on the copied IFilter auto-installer to run the installation, and allow it to complete the process.

The material in this document is for informational purposes only and is subject to change without notice. While reasonable efforts have been made in the preparation of this document to assure its accuracy, Mindjet makes no representation or warranty expressed, implied, or statutory, as to its completeness, accuracy, or suitability, and assumes no liability from the use of the information contained herein.

This software and related documentation are provided under a license agreement containing restrictions on use and disclosure and are protected by patent, copyright, trademark, and other intellectual property laws. Except as expressly provided in any written license agreement from Mindjet, the furnishing of this document does not give you any license to these patents, copyrights, trademarks, or other intellectual property.

Mindjet, MindManager, and the Mindjet and MindManager logos are trademarks of Mindjet, which may be registered in the U.S. and other countries. Microsoft and SharePoint are registered trademarks of Microsoft Corporation in the United States and other countries. IFilter is a trademark of Digital Film Tools, LLC registered in the US and other countries.

© 2014 Mindjet. All rights reserved.