



Quick Installation Guide



TV-IP212/TV-IP212W
TV-IP312/TV-IP312W

H/W: A1.0R

Table of Contents

English	1
1. Before You Start	1
2. Hardware Installation	2
3. Configure the Internet Camera Server	3
Troubleshooting	7

1. Before You Start



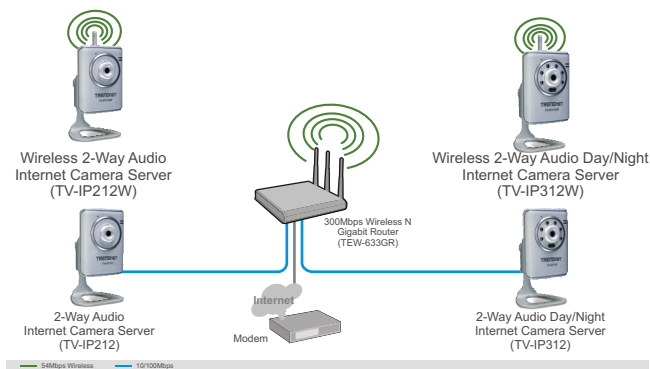
Package Contents

- TV-IP212/TV-IP212W/TV-IP312/TV-IP312W
- Utility CD-ROM
- Quick Installation Guide
- 1 x 2dBi Detachable Antenna (TV-IP212W/TV-IP312W only)
- AC Power Adapter (5V, 2.5A)

System Requirements

- 10/100Mbps Ethernet
- CPU: 1GHz processor or above
- Memory: 256MB RAM or above/ 512MB RAM or above (Windows Vista)
- VGA resolution: 800 x 600 or above
- Web Browser: Internet Explorer (5.0 or higher)
- Wireless access point or wireless router for TV-IP212W/TV-IP312W

Application



2. Hardware Installation

1. Attach the **Antenna**.
(TV-IP212W/TV-IP312W only)

2. Connect a RJ-45 network cable from a Switch/Router to the **Ethernet** port of the Internet Camera server.

3. Connect external speaker to the Internet Camera Server (optional)

4. Connect the AC Power Adapter to the **Internet Camera Server** and then to a power outlet.

5. Connect USB flash drive to the Internet Camera Server (optional)
(TV-IP212W/TV-IP312W only).

6. Verify the Power and Link LEDs are on.



3. Configure the Internet Camera Server

Note: It is recommended that you configure the Internet Camera Server from a wired computer. Since the Internet Camera's default IP address is 192.168.10.30, make sure no other network devices are assigned an IP address of 192.168.10.30.

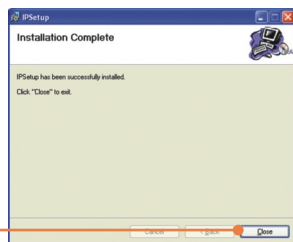
1. Insert the Utility CD-ROM into your CD-ROM drive and then click **IP Setup**.



2. Follow the IPSetup Setup Wizard instructions and then click **Next**.



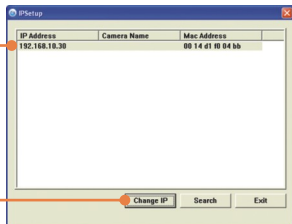
3. Click **Close**.



4. Go to **Start -> Programs -> TRENDnet -> IPSetup** and click **IPSetup**.

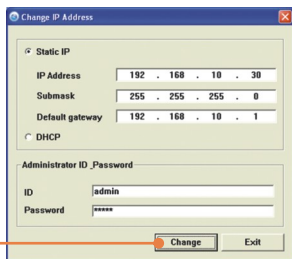


5. Select the camera server and click **Change IP**.

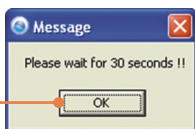


6. Configure the IP address to be in the same subnet as your network, type in the **Administrator ID** and **Password** and click **Change**. By default:

ID: **admin**
Password: **admin**



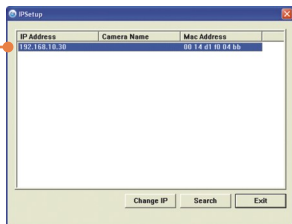
7. Click **OK** and wait 30 seconds.



8. Click **OK**.



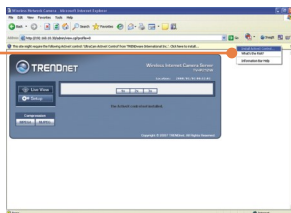
9. Double click the camera server to access the browser configuration.



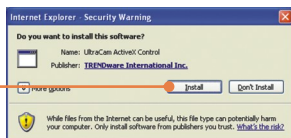
10. Enter the User name and Password, and then click **OK**. By default:
User Name: **admin**
Password: **admin**



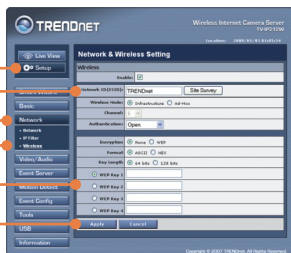
11. Right click and select **Install Active X Control**.



12. Click **Install**.



13. Click **Setup, Network** and then click **Wireless**. Configure your wireless settings to match your wireless network's settings and then click **Apply** (Enable/Enter the WEP/WPA key when your wireless network is encrypted. Contact your network administrator for more information). (TV-IP212W/ TV-IP312W only)

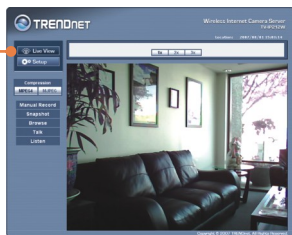


14. Disconnect the RJ-45 cable and unplug the power to the camera server. Then plug the power back in (TV-IP212W/TV-IP312W).

Note: The TV-IP212W/TV-IP312W will not work wirelessly until you disconnect the Ethernet cable from the back of the camera.

15. Verify the Power and Link LEDs are on.

16. Click **Live View**.



Your configuration is now complete.

For detailed information regarding the TV-IP212/TV-IP212W/TV-IP312/TV-IP312W configuration and advanced settings, please refer to the User's Guide included on the Utility & Driver CD-ROM or TRENDnet's website at www.trendnet.com

Register Your Product

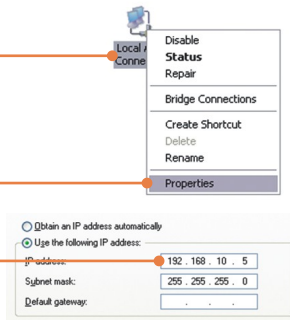
To ensure the highest level of customer service and support, please take a moment to register your product Online at: www.trendnet.com/register
Thank you for choosing TRENDnet

Q1: The IPSetup Setup Wizard does not detect my Internet Camera Server. What should I do?

A1: First, verify that you have followed all the steps in Section 2: Hardware Installation. Second, disable any software firewall programs such as ZoneAlarm or Norton Internet Security. If you are using Windows XP or Windows Vista, disable the built in firewall. Third, click on Search in IPSetup. Fourth, take a pin or paper clip. Then press on the Reset button on the back on the Internet Camera Server for 10 seconds, then let go. Fifth, connect the Internet Camera Server directly to your computer. Put a static IP address on your computer in the same subnet as the camera (e.g. 192.168.10.5). Then open up your browser and enter the IP address of the Internet Camera Server into the address bar. By default, the IP address is 192.168.10.30. Follow steps 9-15 in Section 3: Configure the Internet Camera Server. Click Setup, click Network and then click Network to change the IP address. Then click Apply. See instructions below to put a static IP address on a Windows PC.

1. Go into the **Control Panel** and double-click the **Network Connections** icon, and then right-click the **Local Area Connection** icon and then click **Properties**.

2. Click **Internet Protocol (TCP/IP)** and then click **Properties**. Then click on **Use the following IP address**, and make sure you assign your network adapter an IP address in the subnet of 192.168.10.x.



Q2: The Image is blurry. How can I adjust the focus on the Internet camera?

A2: You can adjust the Internet Camera's focus by rotating the lens.

Q3: When I click on Live View the image does not load?

A3: First, make sure that you are using a browser that supports ActiveX or Java. Second, make sure that Active X or Java is installed.

Q4: How do I connect the TV-IP212W/TV-IP312W to my wireless router or access point?

A4: Make sure that you configure the camera to have the same SSID, encryption mode and key (if enabled). Follow the instructions in section 2 to configure the camera with the SSID and encryption key.

Q5: After I successfully configured the TV-IP212W/TV-IP312W to match my wireless network settings, I can not connect to the camera.

A5: First, verify that the wireless settings match your wireless network settings. Second, verify in the wireless section of the browser configuration that the Enable option is checked. Third, make sure to disconnect the Ethernet cable from the camera and verify that the LINK LED is blinking green.

If you still encounter problems or have any questions regarding the TV-IP212W/TV-IP312W/TV-IP312W, please contact TRENDnet's Technical Support Department.

Certifications

This equipment has been tested and found to comply with FCC and CE Rules. Operation is subject to the following two conditions:

- (1) This device may not cause harmful interference.
- (2) This device must accept any interference received. Including interference that may cause undesired operation.



Waste electrical and electronic products must not be disposed of with household waste. Please recycle where facilities exist. Check with you Local Authority or Retailer for recycling advice.



NOTE: THE MANUFACTURER IS NOT RESPONSIBLE FOR ANY RADIO OR TV INTERFERENCE CAUSED BY UNAUTHORIZED MODIFICATIONS TO THIS EQUIPMENT. SUCH MODIFICATIONS COULD VOID THE USER'S AUTHORITY TO OPERATE THE EQUIPMENT.

ADVERTENCIA

En todos nuestros equipos se mencionan claramente las características del adaptador de alimentación necesario para su funcionamiento. El uso de un adaptador distinto al mencionado puede producir daños físicos y/o daños al equipo conectado. El adaptador de alimentación debe operar con voltaje y frecuencia de la energía eléctrica domiciliar existente en el país o zona de instalación.



TRENDnet[®]

Product Warranty Registration

Please take a moment to register your product online.
Go to TRENDnet's website at <http://www.trendnet.com/register>

TRENDnet[®]

20675 Manhattan Place
Torrance, CA 90501
USA