

New Addition, Different Habitats, Distribution Range and Diversity of Genus *Strobilanthes* (Acanthaceae) in Sri Lanka

R.M.R. Nilanthi^{1,2*}, R.A.M.P.M. Rajathewa³, N. Jayawardana¹, S. Wijesundara⁴,
P.C.G. Bandaranayake⁵

¹Department of Wildlife Conservation, Battaramulla, Sri Lanka

²Post Graduate Institute of Science, University of Peradeniya, Peradeniya, Sri Lanka

³Environmental Consultants, Education and Rehabilitation Organization (ECERO), Gampaha,
Sri Lanka

⁴National Institute of Fundamental Studies, Hantane Road, Kandy, Sri Lanka

⁵Agriculture Biotechnology Centre, Faculty of Agriculture, University of Peradeniya, Peradeniya,
Sri Lanka

Date Received: 23-04-2021

Date Accepted: 10-06-2021

Abstract

Strobilanthes Blume (Acanthaceae) is one of the largest genera in the flora of Sri Lanka and is most interesting for its diversified habits, gregarious occurrence, and elegant flowering. Approximately 450 *Strobilanthes* species are widely distributed in the tropical and subtropical parts of Asia. Wood recognized 30 *Strobilanthes* species in Sri Lanka in 1994. Later, three species were added, *Strobilanthes willissi* in 2000, *S. cordofolia* in 2014 and *S. medahinensis* in 2021. *Strobilanthes reptans* is reported for the first time from Sri Lanka. With this new addition, Sri Lanka consists of 34 *Strobilanthes* species. Extensive plant explorations were conducted across the entire distribution range of the genus *Strobilanthes* in Sri Lanka, covering 21 administrative districts from September 2005 to April 2021. The genus *Strobilanthes* grow from 100 m to 2,500 m, in an extensive range of different habitats. We could record *S. gardneriana*, critically endangered possibly extinct species from Hantana at 1,330 m elevation in 2020 after 1927 and critically endangered species, *S. rhytisperma* from Gendagala in 2019 after 1971. Species distributions are more expansive with increasing altitude. The extended distributional record for many species of *Strobilanthes* could be found. However, several species were not found in their type locality. We could see them at other locations. Therefore necessary conservation measures should be taken to conserve such diversity and overcome threats.

Keywords: Gregarious, altitudes, undergrowth, locality, exploration

1. Introduction

Strobilanthes Blume (1826: 781) the second largest genus in family Acanthaceae, comprising about 450 species that show great morphological diversity (Mabberley, 2017; Patil, 2021; POWO, 2019). *Strobilanthes* mainly distributed in the tropical and subtropical parts of the Asia from Afghanistan through India-Sri Lanka and southeast Asia to Australia (Wood and Scotland, 2009; Josekutty *et al.*, 2018; Wood *et al.*, 2021). It is also the most interesting genera in the family, for its gregarious nature, infrequent flowering and diverse habitats, coupled with the narrow distribution of species (Mascarenhas and Janarthanam, 2013). Some species are well known for their infrequent flowering. Several species are perennial and monocarpic, with a period varying from 3 to 16 years depending on the species (Janzen, 1976). Bremekamp (1944) called such a life history 'plietesial' flowering. The mass flowering is common for almost all populations of same species. Shrubs of the genus *Strobilanthes* dominate the montane forest understory in Sri Lanka, several species often occurring together. The species of genus *Strobilanthes* grow from 100 m up to 2,500 m, and many species have a rather restricted distribution in undisturbed moist montane, sub montane and lowland forests of the central and southwestern part of the island.

*Correspondence: nilanthi.dwc@gmail.com

Tel: +94714877303

© University of Sri Jayawardenepura

The species of *Strobilanthes* range in habit from short perennial herbs to densely branched, erect shrubs. Inflorescence very varied the flowers sessile or pedicellate in open panicles, bracteate heads or spikes. Corolla shape is variable within *Strobilanthes*, for example, in Sri Lankan species of *Strobilanthes* bear corolla tube abruptly campanulate from a narrow cylindrical base while some species have corolla tube gradually expanded from the base (Wood, 1998). Leaf shape is also variable from narrowly oblong-lanceolate to broadly oblong-elliptic. The species delimitation remains problematic because many species are poorly known and rarely collected. It is possible that new species still remain to be discovered. Wood recognized 30 *Strobilanthes* species in Sri Lanka in 1994. Later, three species were added *Strobilanthes willisii* Carine et al. (2000), *S. cordifolia* (Vahl 1794) Wood (2014) and *S. medahinnensis* Nilanthi in Nilanthi et al. (2021): Earlier, *S. cordifolia* was classified under genus *Stenociphonium* Nees (Acanthaceae). Fourteen species originally described in the genus *Hemigraphis* are now has been transferred to the genus *Strobilanthes* (Deng, 2019). The *Strobilanthes* flora of Sri Lanka has not updated document for more than two decades and this work represents the most recent study on different habitats, distribution range and diversity of *Strobilanthes* species in Sri Lanka.

2. Methodology

2.1 The study area

The location used for sample collection is given in Figure 1. The majority of sites were from the wet climates.

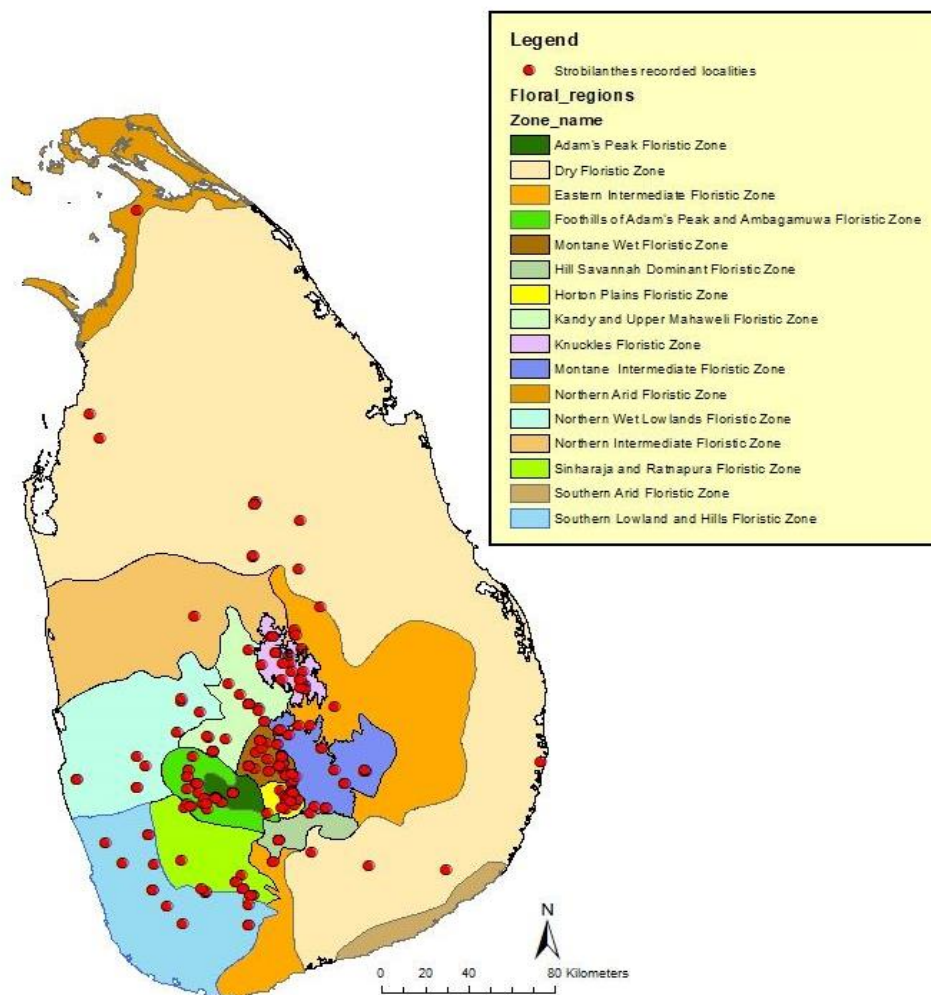


Figure 1. Distribution range of *Strobilanthes* species in Sri Lanka

2.2 Data Collection

Extensive plant explorations were conducted across the entire distribution range of the genus *Strobilanthes* in Sri Lanka covering 21 administrative districts from September 2005 to April 2021 in different seasons (Figure 1). Efforts were made to study plants in their flowering condition so as to identify them properly. Standard methods for collection and preservation were used following Alexiades (1996). Voucher specimens were deposited at the National Herbarium at Royal Botanic Gardens, Peradeniya, Sri Lanka, (PDA). Flowers were preserved in FAA solution (5% formaldehyde (v/v), 5% (v/v) acetic acid and 45% (v/v) ethanol) to study the morphological details in future. Herbarium specimens at PDA and digital herbaria such as Kew (K), University of Graz, Institute of Plant Sciences (UGPS) and online databases of digitized herbarium specimens (JSTOR) of Royal Botanic Garden, Kew and literature available on *Strobilanthes* and publications (Venu, 2006; Wood, 1994, 1995, 1998; Wood and Scotland, 2009) were consulted for the identification our collected specimens. The morphological characters obtained by direct observation of the plant specimens, Habitat, localities, altitudinal range and flowering periods were stored in MS EXCEL. The GPS coordinates of the collection sites were recorded using GARMIN GPS map 78s and mapped on Floristic Map of Sri Lanka using ARC GIS version 10.8.1 ESRI, 2020. List of species employed in the study were shown in Table 1. All taxonomic names, author details and journal abbreviations follow the International Plant Names Index available at www.ipni.org.

Table 1: List of species used in the study

No	Name	First Published in
1	<i>Strobilanthes adenophora</i> Nees	A.P.de Candolle, Prodr. 11: 182 (1847)
2	<i>Strobilanthes anceps</i> Nees	Compan. Bot. Mag. 2: 312 (1837)
3	<i>Strobilanthes arnottiana</i> Nees	Compan. Bot. Mag. 2: 312 (1837)
4	<i>Strobilanthes calycina</i> Nees	Compan. Bot. Mag. 2: 312 (1837)
5	<i>Strobilanthes caudata</i> T. Anderson	G.H.K.Thwaites, Enum. Pl. Zeyl.: 228 (1860)
6	<i>Strobilanthes cordifolia</i> (Vahl) J.R.I.Wood	Novon 23: 390 (2014)
7	<i>Strobilanthes deflexa</i> T. Anderson	G.H.K.Thwaites, Enum. Pl. Zeyl.: 227 (1860)
8	<i>Strobilanthes diandra</i> (Nees) Alston	H.Trimen, Handb. Fl. Ceylon 6(Suppl.): 227 (1931)
9	<i>Strobilanthes diandra</i> var. <i>densa</i> (C.B.Clarke) J.R.I.Wood	Kew Bull. 50: 8 (1995)
10	<i>Strobilanthes exserta</i> C.B.Clarke	J.D.Hooker, Fl. Brit. India 4: 445 (1884)
11	<i>Strobilanthes gardneriana</i> (Nees) T. Anderson	G.H.K.Thwaites, Enum. Pl. Zeyl.: 226 (1860)
12	<i>Strobilanthes gossypina</i> T. Anderson	J. Linn. Soc., Bot. 9: 466 (1867)
13	<i>Strobilanthes habracanthoides</i> J.R.I. Wood	Kew Bull. 50: 22 (1995)
14	<i>Strobilanthes hamiltoniana</i> (Steud.) Bosser & Heine	Bull. Mus. Natl. Hist. Nat., B, Adansonia 10: 148 (1988)
15	<i>Strobilanthes helicoides</i> T. Anderson	G.H.K.Thwaites, Enum. Pl. Zeyl.: 229 (1860)
16	<i>Strobilanthes hookeri</i> Nees	Compan. Bot. Mag. 2: 312 (1837)
17	<i>Strobilanthes hypericoides</i> J.R.I. Wood	Kew Bull. 50: 15 (1995)
18	<i>Strobilanthes laxa</i> T. Anderson	G.H.K.Thwaites, Enum. Pl. Zeyl.: 228 (1860)
19	<i>Strobilanthes lupulina</i> Nees	N.Wallich, Pl. Asiat. Rar. 3: 85 (1832)
20	<i>Strobilanthes medahinnensis</i> R.M.R. Nilanthi	Nilanthi <i>et al.</i> (2021)
21	<i>Strobilanthes nigrescens</i> T. Anderson	G.H.K.Thwaites, Enum. Pl. Zeyl.: 226 (1860)
22	<i>Strobilanthes nockii</i> Trimen	Handb. Fl. Ceylon 3: 31 (1895)
23	<i>Strobilanthes pentandra</i> J.R.I. Wood	Kew Bull. 50(1): 4.1995
24	<i>Strobilanthes pulcherrima</i> T. Anderson	G.H.K.Thwaites, Enum. Pl. Zeyl.: 229 (1860)
25	<i>Strobilanthes punctata</i> Nees	A.P.de Candolle, Prodr. 11: 183 (1847)

26	<i>Strobilanthes reptans</i> (G.Forst.) Moylan ex Y.F.Deng & J.R.I.Wood	Fl. China 19: 390 (2011)
27	<i>Strobilanthes rhamnifolia</i> (Nees) T. Anderson	G.H.K.Thwaites, Enum. Pl. Zeyl.: 226 (1860)
28	<i>Strobilanthes rhytisperma</i> C.B. Clarke	J.D.Hooker, Fl. Brit. India 4: 432 (1884)
29	<i>Strobilanthes schomburgkii</i> (Craib) J.R.I.Wood	Bull. 64: 46 (2009)
30	<i>Strobilanthes sexennis</i> Nees	Compan. Bot. Mag. 2: 312 (1837)
31	<i>Strobilanthes sexennis</i> var. <i>cerinthoides</i> (Nees) C.B.Clarke	Kew Bull. 50: 18 (1995)
32	<i>Strobilanthes sexennis</i> var. <i>glaberrima</i> J.R.I.Wood	Kew Bull. 50: 18 (1995)
33	<i>Strobilanthes sexennis</i> var. <i>hirsutissima</i> (Nees) C.B.Clarke	J.D.Hooker, Fl. Brit. India 4: 474 (1884)
34	<i>Strobilanthes stenodon</i> C.B. Clarke	J.D.Hooker, Fl. Brit. India 4: 432 (1884)
35	<i>Strobilanthes thwaitesii</i> T. Anderson	G.H.K.Thwaites, Enum. Pl. Zeyl. 1: 227 (1860)
36	<i>Strobilanthes vestita</i> Nees	A.P.de Candolle, Prodr. 11: 180 (1847)
37	<i>Strobilanthes viscosa</i> (Arn. ex Nees) T. Anderson	G.H.K.Thwaites, Enum. Pl. Zeyl.: 226 (1860)
38	<i>Strobilanthes viscosa</i> var. <i>digitalis</i> (Nees) C.B.Clarke	J.D.Hooker, Fl. Brit. India 4: 432 (1885)
39	<i>Strobilanthes walkeri</i> var. <i>walkeri</i> Arn. ex Nees	Compan. Bot. Mag. 2: 312 (1837)
40	<i>Strobilanthes willisii</i> Canine	Kew Bull. 55: 971 (2000)
41	<i>Strobilanthes zeylanica</i> T. Anderson	G.H.K.Thwaites, Enum. Pl. Zeyl.: 227 (1860)
42	<i>Strobilanthes_RMRN_123</i>	Unpublished

3. Results

3.1 New records to the Genus *Strobilanthes* in Sri Lanka

According to this study *Strobilanthes reptans* (G.Forst.) Moylan ex Y.F.Deng & J.R.I.Wood is reported at first time from Sri Lanka here described and illustrated.

3.1.1 Taxonomic treatment

Strobilanthes reptans (G.Forst.) Moylan ex Y.F.Deng & J.R.I.Wood, Fl. China. 19: 390. 2011. *Ruellia reptans* G. Forst., Fl. Ins. Austr. 44. 1786. *R. primulifolia* Nees, Prodr. 11: 144. 1847. *Hemigraphis primulifolia* (Nees) Fern.-Vill., Nov. App. 153. 1880. *H. reptans* (G.Forst.) T.Anderson ex Hemsl., Rep. Voy. Challenger, Bot. 1(3): 173. 1885. *H. okamotoi* Masam., Trans. Nat. Hist. Soc. Formosa 25: 248. 1935. *H. pacifica* Hosok., Trans. Nat. Hist. Soc. Formosa 25: 127. 1935. *Strobilanthes primulifolia* (Nees) Y.F.Deng & J.R.I.Wood, J. Trop. Subtrop. Bot. 18: 483. 2010 (Figure 2 & Figure 3).

Herb to 12 cm tall, perennial, isophyllous. Stems short, erect with short internodes, densely covered with purple-red hairy, leaves basal, opposite. Petiole 0.5-2.1 cm long, pubescent. Leaves oblong-ovate, 1-5×0.6-3 cm, both surfaces pubescent, adaxially dark green, softly pubescent, abaxially purple-red, midrib and lateral vein densely pubescent, margin crenate to subentire, apex obtuse, base truncate to cordate, lateral veins 4-6 pairs. Inflorescences terminal spikes elongating to 6-8 cm at maturity, peduncle pubescent, bracts oblanceolate to elliptic, 0.5-2.1×0.4-0.8 cm, pubescent, margin entire and ciliate. Calyx 6.1-7.5 mm long, 5-lobed, pubescent, lobes linear-lanceolate, margins ciliate. Corolla 1-1.2 cm long, 5.5-7 mm wide, white or pale violet with darker veins, glabrous, tube basally cylindrical, slightly ventricose, stamens 4, included, didynamous, pubescent, shorter filament pair ca. 2 mm, longer filament pair ca. 4 mm, anther thecae ca. 1 mm, oblong. Ovary oblong, ca. 2 mm long, style villous ca. 5.6 mm long, stigma blunt. Capsule oblong, 6-10 mm long, apex pubescent. Seeds glabrous, 0.8-1 mm long, 0.8-1.5 mm wide, apex acute.

Phenology: The flowering occurs from October to June to September. Fruiting occurs from July to December.

Habitat: Wet soil in shade in in garden and road sides at an altitude of 30-300 m.

Distribution: Sri Lanka (lowland wet zone - present report), India, Taiwan, Japan, Malaysia, Indonesia, Papua New Guinea, Philippines, Australia.

Specimen examined: SRI LANKA, Sabaragamuwa Province, Ratnapura District, Opanayake, E 166892, N 179540, 1430 m, 24 June 2020, Nilanthi 200 (RMRN_200 PDA!).

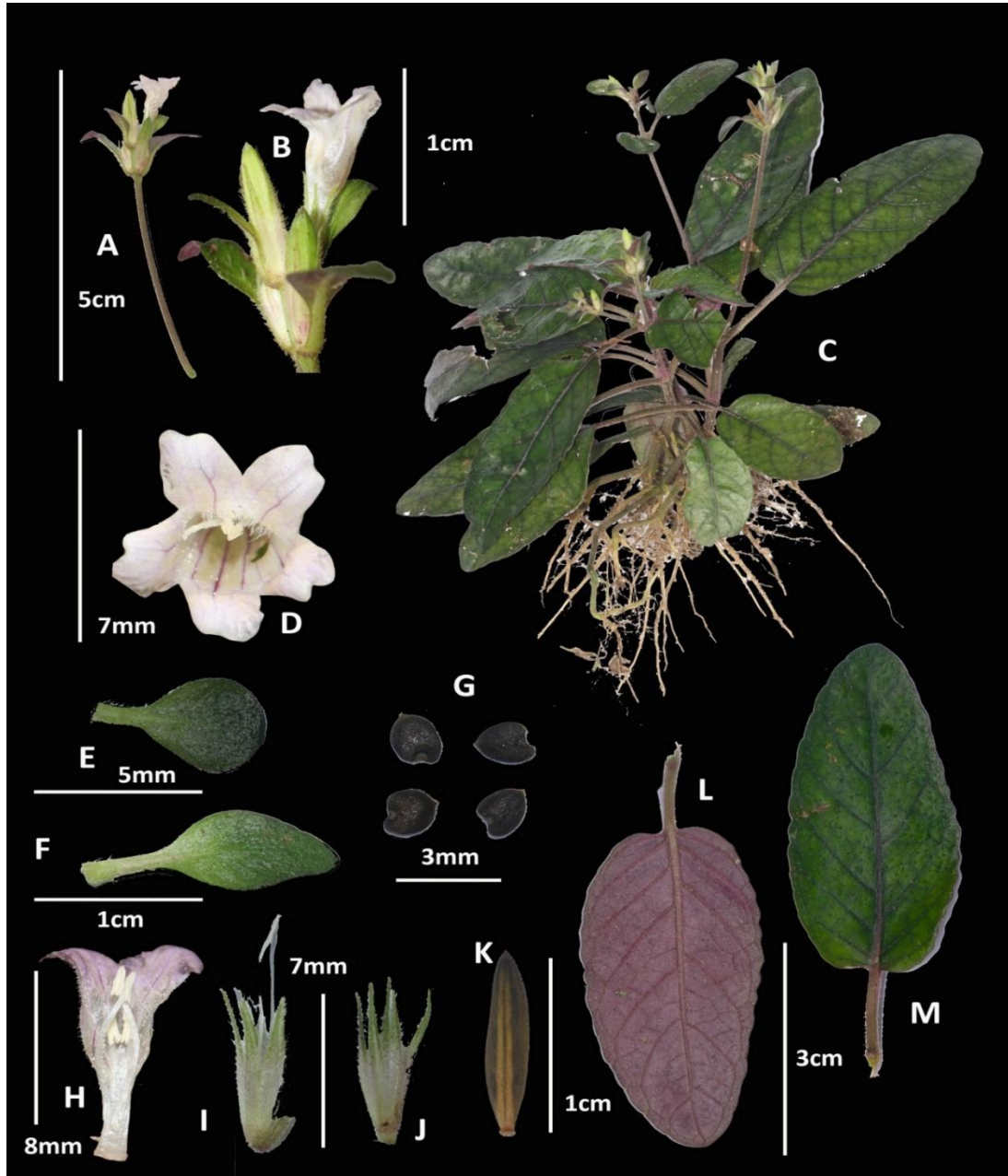


Figure 2. *Strobilanthes reptans* (G.Forst.) Moylan ex Y.F.Deng & J.R.I.Wood

Inflorescence; B. Close-up of inflorescence; C. Habit; D. Flower-top view; E. Upper-most Bract; F. Lower-most Bract; G. Seeds; H. Half flower; I. Calyx with gynoecium; J. Calyx; K. Capsule; L. Ventral surface of leaf; M. Dorsal surface of leaf

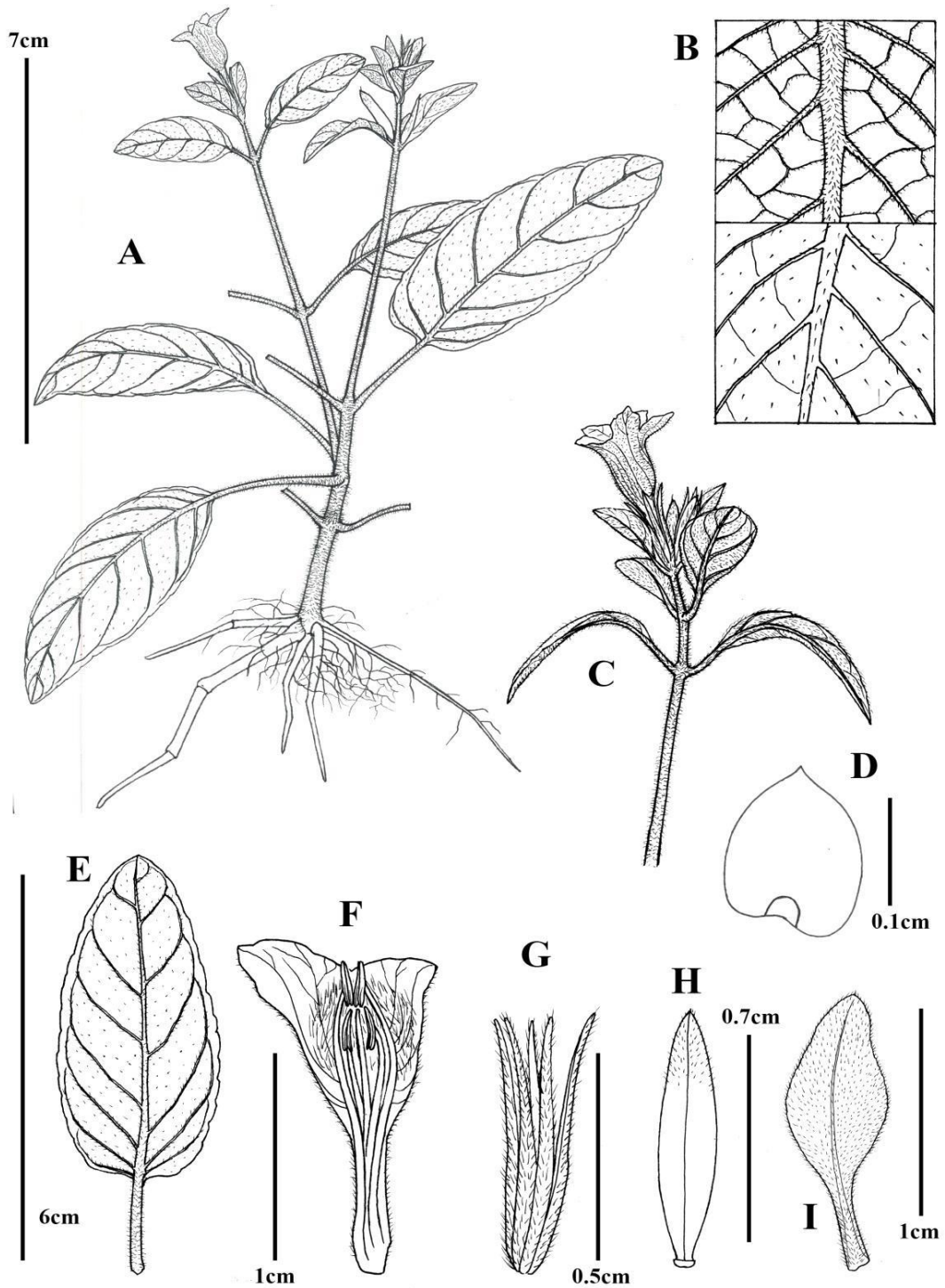


Figure 3. Line Diagram of *Strobilanthes reptans* (G.Forst.) Moylan ex Y.F.Deng & J.R.I.Wood

A. Habit; B. Close up of dorsal and ventral surface of the leaf; C. Inflorescence; D. Seed; E. Leaf; F. Half flower; G. Calyx; H. Capsule; I. Bract.

3.2 Exploration of *Strobilanthes* species

Strobilanthes laxa Anderson (1860) was described by T. Anderson in 1860 and there are records in 1882, 1883, 1973 and last record was done by Robin Foster from Piduruthalagala in 1975. After that we could record it from Bogawanthalawa, Riverstern and Knuckles in 2019.

Strobilanthes gardneriana was first collected by Gardner, #1217 K, BM in 1857 from Hantane and described by T. Anderson in 1860 and has again collected from Haggala, Nuwara Eliya in 1927. As suitable habitats of this plant have been cleared for tea plantations, this species might be disappeared. However we could collect it from Hantane at 1,330 m elevation in 2020.

Strobilanthes rhytisperma is only known from specimen, Ranwalakelle, Kaluthara in 1971 and specimen from central province where the locality unknown. After that plants of this species have not been found. We could record *S. rhytisperma* from Gendagala, Kalutara in 2019.

We recorded *S. sexennis* var. *cerinthoides* first time from Ehela Kanuwa, Adams peak in 2017 after 1975, *S. viscosa* var. *digitalis* first time from Gongala in 2019, *S. thwaitesii* first time from Pahiyangala in 2019, *S. zeylanica* first time from Gendagala, Kalutara in 2019, *S. stenodon* first time from Nildandawa, Keerthibandrapura in 2018 and *S. exserta* first time from Kudaoya, Thanamalwila, Udawalawa, Lahugala (Figure 4). However several species were not found in their type locality, we could find them at other locations.

During the plant explorations on 22nd April, 2016 by the first and third authors found an interesting *Strobilanthes* population consisting of about 250 individuals, growing in the shade and along the water stream at Rambukoluwa in Knuckles Mountain Range. It may be a new species.

3.3 Distribution of *Strobilanthes* species on floristic map of Sri Lanka

The highest numbers of *Strobilanthes* species (17 no. of species) are distributed on Foothills of Adam's Peak and Ambagamuwa Floristic Zone. The second highest numbers of *Strobilanthes* species (11 no. of species) are distributed on Knuckles Floristic Zone. The lowest numbers of *Strobilanthes* species (only one species) are distributed on Southern Arid Floristic Zone and Northern Arid Floristic Zone (Figure 5).

3.4 Habitat Diversity

The species of genus *Strobilanthes* grow from 100 m up to 2,500 m, in a very wide range of different habitats such as, dense aggregations along steep rocky slopes, along margins of grasslands, dense aggregations along slopes at lower altitudes, in plains, thick rainforest undergrowth, shaded places in ravines, open rocky cliffs, on the exposed rocks, along stream banks, evergreen forest margins, primary forests, scrambling shrub growing through other plants, moist rocks along streams (Figure 6 and 8).

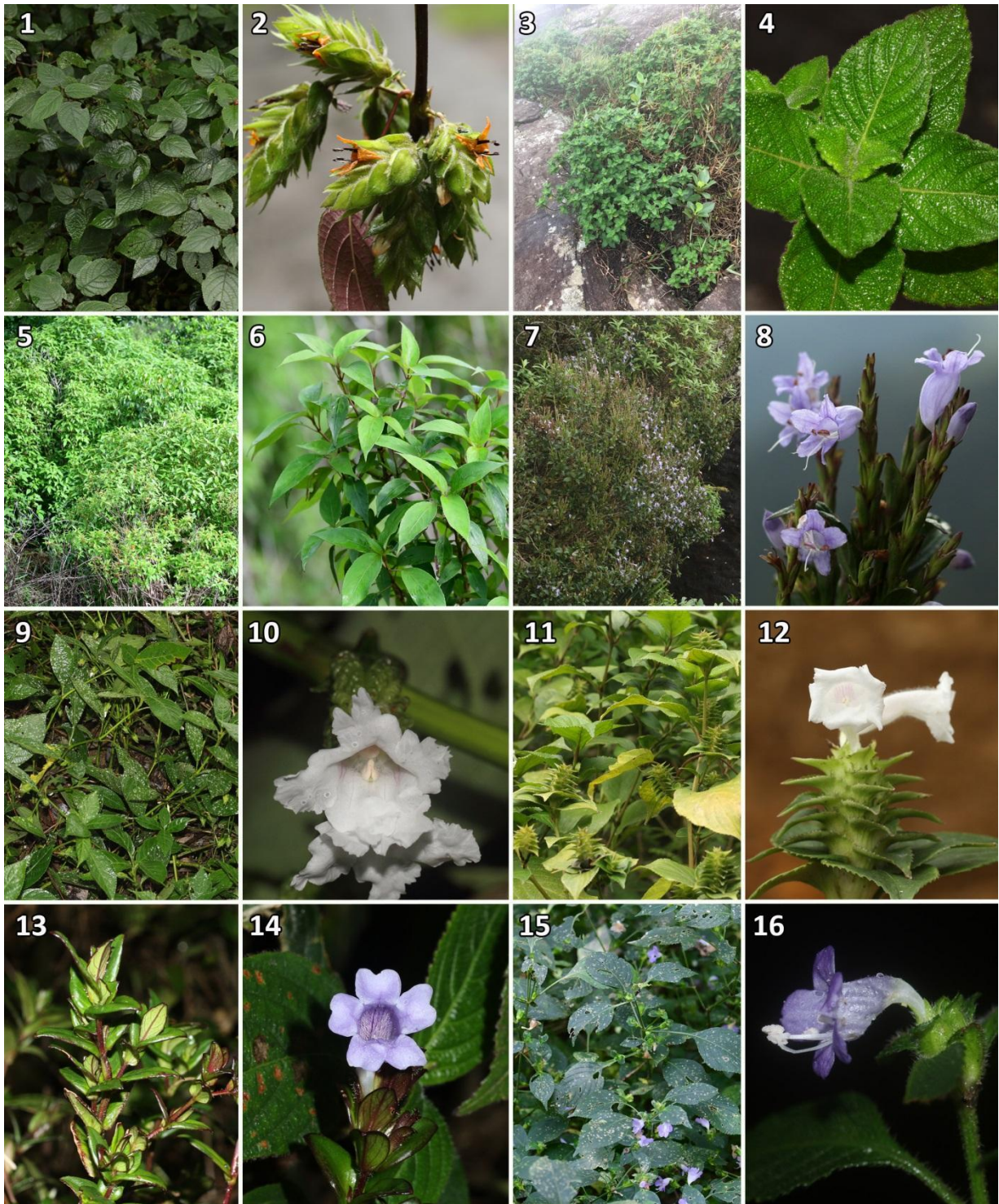


Figure.4. - *Strobilanthes laxa* 1. Habit; 2. Inflorescence; - *Strobilanthes gardneriana*; 3. Habit; 4. Leaves; - *Strobilanthes rhytisperma*, 5. Habit; 6. Branch; - *Strobilanthes viscosa* var. *digitalis*; 7. Habit; 8. Inflorescence; - *Strobilanthes thwaitesii*; 9. Habit; 10. Inflorescence; - *Strobilanthes zeylanica*; 11. Habit; 12. Inflorescence; - *Strobilanthes sexennis* var. *cerinthoides*; 13. Branch; 14. Inflorescence; - *Strobilanthes exserta*; 15. Habit; 16. Inflorescence

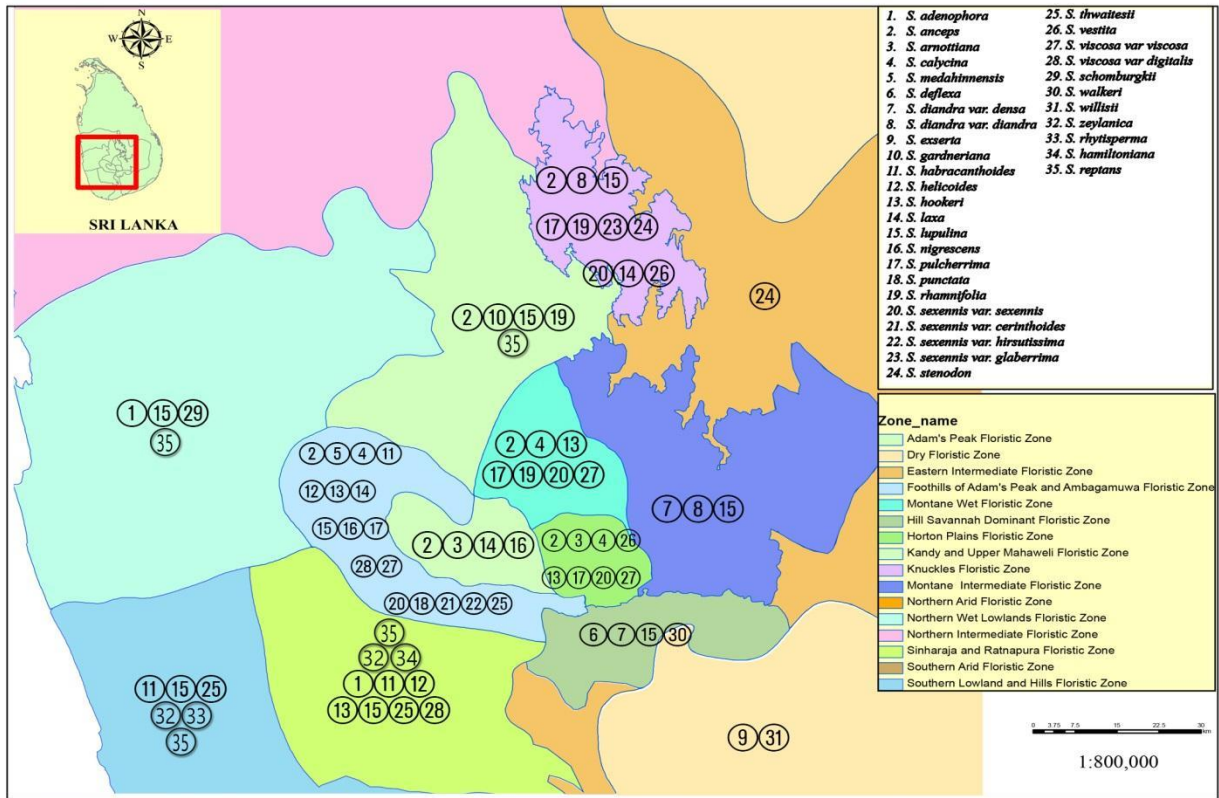


Figure 5. Distribution of *Strobilanthes* species on floristic map of Sri Lanka

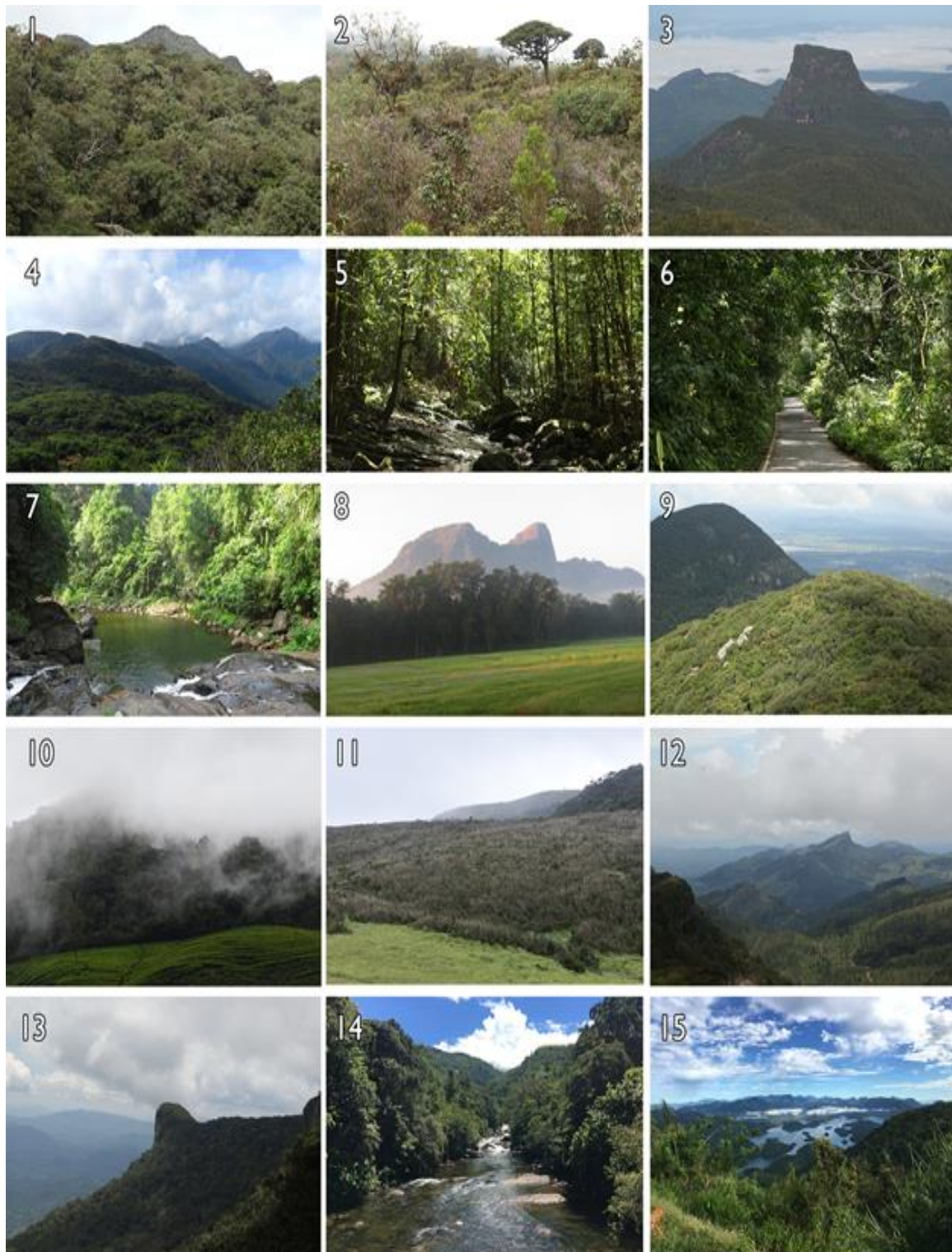


Figure 6. Different locations of *Strobilanthes* recorded sites in Sri Lanka

1. Horton plains; 2. Piduruthalagala; 3. Adam's peak; 4. Knuckles; 5. Kithulgala; 6. Meethirigala; 7. Gilimale; 8. Nilgala; 9. Ritigala; 10. Nmunukula; 11. Mandaram Nuwara; 12. Hanthana range; 13. Gongala; 14. Deraniyagala; 15. Keerthibandarapura

#	Species	Altitudinal Range					
		0	500	1000	1500	2000	2500
1	<i>Strobilanthes adenophora</i> Nees	0-500					
2	<i>Strobilanthes anceps</i> Nees			1000-2500			
3	<i>Strobilanthes arnottiana</i> Nees					2000-2500	
4	<i>Strobilanthes calycina</i> Nees			1000-2500			
5	<i>Strobilanthes caudata</i> T. Anderson			1000-2000			
6	<i>Strobilanthes cordifolia</i> (Vahl) J.R.I. Wood	0-1000					
7	<i>Strobilanthes deflexa</i> T. Anderson		500-1500				
8	<i>Strobilanthes diandra</i> var. <i>diandra</i> (Nees) Alston		500-2000				
9	<i>Strobilanthes diandra</i> var. <i>densa</i> (C.B. Clarke) J.R.I. Wood			1000-2000			
10	<i>Strobilanthes exserta</i> C.B. Clarke	0-500					
11	<i>Strobilanthes garbhneriana</i> (Nees)			1000-2500			
12	<i>Strobilanthes gossypina</i> T. Anderson				1500-2500		
13	<i>Strobilanthes habracanthoides</i> J.R.I. Wood		500-2000				
14	<i>Strobilanthes hamiltoniana</i> (Steud.) Bosser & Heine		500-2000				
15	<i>Strobilanthes helicoides</i> T. Anderson			1000-2500			
16	<i>Strobilanthes hookeri</i> Nees			1000-2500			
17	<i>Strobilanthes hypericoides</i> J.R.I. Wood				1500-2500		
18	<i>Strobilanthes laxa</i> T. Anderson			1000-2500			
19	<i>Strobilanthes lupulina</i> Nees	0-2000					
20	<i>Strobilanthes medahivensis</i> Nilanthi			1000-2000			
21	<i>Strobilanthes nigrescens</i> T. Anderson	0-1000					
22	<i>Strobilanthes nockii</i> Timen				1500-2500		
23	<i>Strobilanthes pentandra</i> J.R.I. Wood			1000-2000			
24	<i>Strobilanthes pulcherrima</i> T. Anderson				1500-2500		
25	<i>Strobilanthes punctata</i> Nees				1500-2000		
26	<i>Strobilanthes reptans</i> (G. Forst.) Moylan ex Y.F. Deng & J.R.I. Wood	0-500					
27	<i>Strobilanthes rhamnifolia</i> Nees		500-2000				
28	<i>Strobilanthes rhytidisperma</i> C.B. Clarke		500-1500				
29	<i>Strobilanthes schomburgkii</i> (Craib) J.R.I. Wood	0-1000					
30	<i>Strobilanthes sexennis</i> Nees			1000-2500			
31	<i>Strobilanthes sexennis</i> var. <i>cerinthoides</i> (Nees) C.B. Clarke					2000-2500	
32	<i>Strobilanthes sexennis</i> var. <i>glaberrima</i> J.R.I. Wood			1000-2000			
33	<i>Strobilanthes sexennis</i> var. <i>hirsutissima</i> (Nees) T. Anderson					2000-2500	
34	<i>Strobilanthes stenodon</i> C.B. Clarke		500-2000				
35	<i>Strobilanthes thwaitesii</i> T. Anderson	0-1000					
36	<i>Strobilanthes vestita</i> Nees			1000-2000			
37	<i>Strobilanthes viscosa</i> (Am. ex Nees) T. Anderson			1000-2500			
38	<i>Strobilanthes viscosa</i> var. <i>digitalis</i> (Nees) C.B. Clarke			1000-2000			
39	<i>Strobilanthes walheri</i> Am. ex Nees		500-2500				
40	<i>Strobilanthes willisii</i> Canine		500-1500				
41	<i>Strobilanthes seylanica</i> T. Anderson	0-2000					
42	<i>Strobilanthes</i> _RMRN_123	0-500					

Figure 7. Altitudinal Range of *Strobilanthes* species

In Sri Lanka, many *Strobilanthes* species have a rather restricted distribution in undisturbed moist montane, submontane, and lowland forests of the central and southwestern parts of the island (Figure 7, Table 2). *Strobilanthes exserta* Clarke (1884), *S. willisii* Carine et al. (2000), and *S. cordifolia* (Vahl 1794) Wood (2014) are confined to the dry zone while *S. lupulina* Nees (1832) is distributed widely at low and high altitudes of the wet zone. About 19 no. of species are mainly distributed in montane and submontane evergreen forests whereas about 5 no. of species are confined to lowland wet evergreen forests.

Table 2: *Strobilanthes* species distributed in climate zones

Altitude	Climate zone	Recorded Species	Number of Endemic Species
0-100	Arid Zone	<i>S. exserta</i> , <i>S. cordifolia</i>	0
0-500	Dry Zone	<i>S. exserta</i> , <i>S. cordifolia</i> , <i>S. willisii</i> , <i>S. walkeri</i>	2
0-1000	Lowland Wetzone	<i>S. adenophora</i> , <i>S. anceps</i> , <i>S. deflexa</i> , <i>S. diandra</i> , <i>S. habracanthoides</i> , <i>S. hamiltoniana</i> , <i>S. helicoides</i> , <i>S. hookeri</i> , <i>S. lupulina</i> , <i>S. nigrescens</i> , <i>S. rhamnifolia</i> , <i>S. rhytisperma</i> , <i>S. schomburgkii</i> , <i>S. stenodon</i> , <i>S. thwaitesii</i> , <i>S. walkeri</i> , <i>S. zeylanica</i>	12
1000-1500	Sub montane	<i>S. anceps</i> , <i>S. calycina</i> , <i>S. caudata</i> , <i>S. diandra</i> , <i>S. gardneriana</i> , <i>S. habracanthoides</i> , <i>S. hamiltoniana</i> , <i>S. helicoides</i> , <i>S. hookeri</i> , <i>S. laxa</i> , <i>S. lupulina</i> , <i>S. pentandra</i> , <i>S. punctata</i> , <i>S. rhamnifolia</i> , <i>S. sexennis</i> , <i>S. vestita</i> , <i>S. viscosa</i> , <i>S. walkeri</i> , <i>S. zeylanica</i> , <i>S. medahinnensis</i>	14
1500-2500	Montane	<i>S. anceps</i> , <i>S. arnottiana</i> , <i>S. calycina</i> , <i>S. gardneriana</i> , <i>S. gossypina</i> , <i>S. helicoides</i> , <i>S. hookeri</i> , <i>S. hypericoides</i> , <i>S. laxa</i> , <i>S. lupulina</i> , <i>S.nockii</i> , <i>S. pulcherrima</i> , <i>S. punctata</i> , <i>S. sexennis</i> , <i>S. vestita</i> , <i>S. viscosa</i> , <i>S. walkeri</i>	11



Figure. 8. Different habitats of *Strobilanthes* in Sri Lanka

1. *Strobilanthes adenophora*; 2. *S. anceps*; 3. *S. diandra*; 4. *S. exserta*; 5. *S. helicoides*; 6. *S. pulcherrima*; 7. *S. punctata*; 8. *S. rhamnifolia*; 9. *S. rhytisperma*; 10. *S. willisii*; 11. *S. zeylanica*; 12. *Strobilanthes_RMRN_123*; 13. *S. gardneriana*; 14. *S. laxis*; 15. *S. sexennis* var. *sexennis*; 16. *S. viscosa* var. *digitalis*

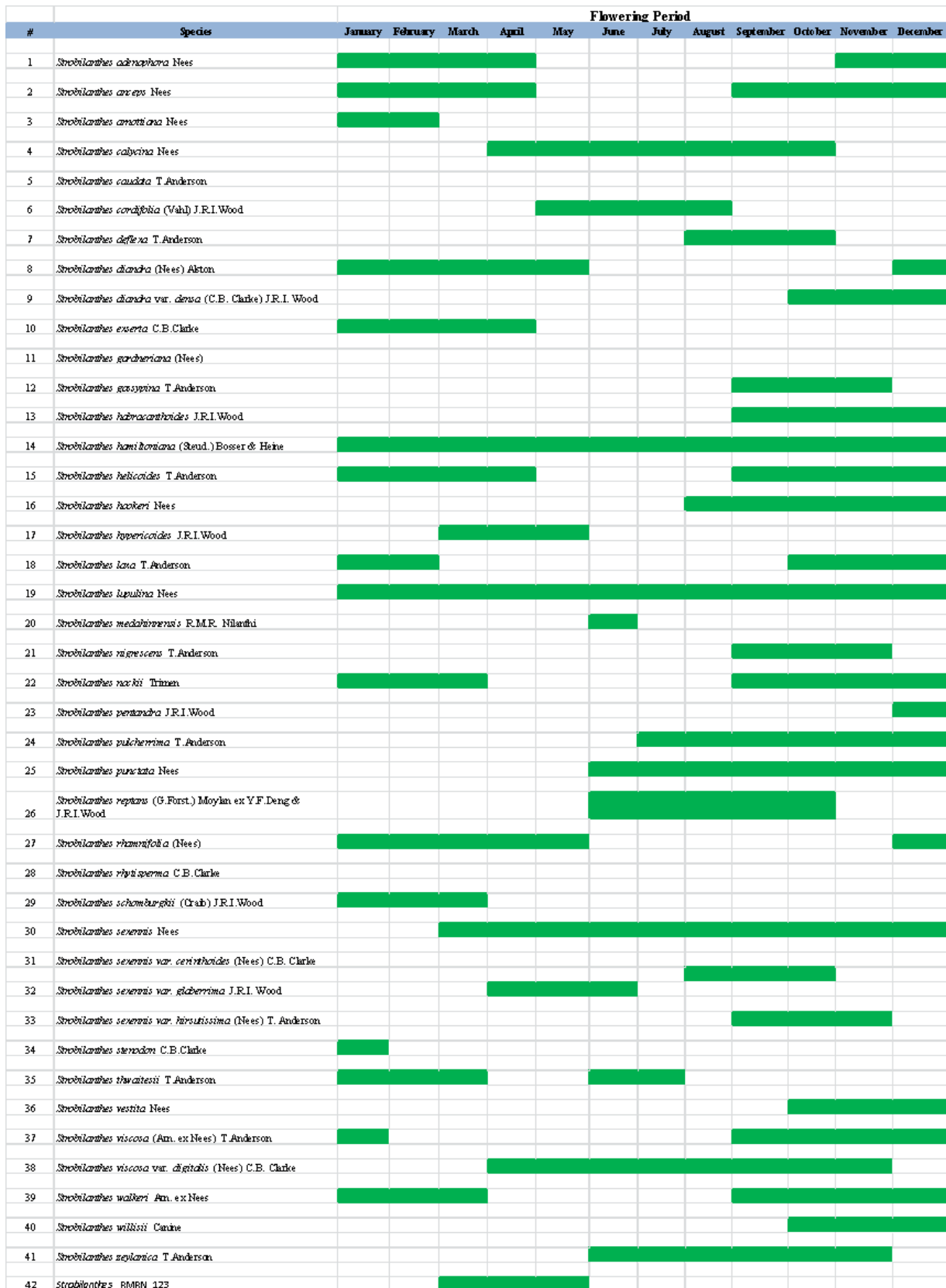


Figure 9. Flowering Period of *Strobilanthes* species

Strobilanthes has a flowering period varying from 3 to 13 years depending on the species. Similarly, *Strobilanthes* species blooming period of the year is varying according to the species (Figure 9). Most of species bloom on September to December. Some species such as *S. lupulina* and *S. hamiltoniana* bloom throughout the year. Many species are remarkable for their gregarious flowering

over large areas. Leaf shape is variable from narrowly oblong-lanceolate to broadly oblong-elliptic (Figure 10). Corolla shape is variable within *Strobilanthes*; in Sri Lankan species of *Strobilanthes* have corolla tube abruptly campanulate from a narrow cylindrical base while some species have corolla tube gradually expanded from the base (Figure 11).

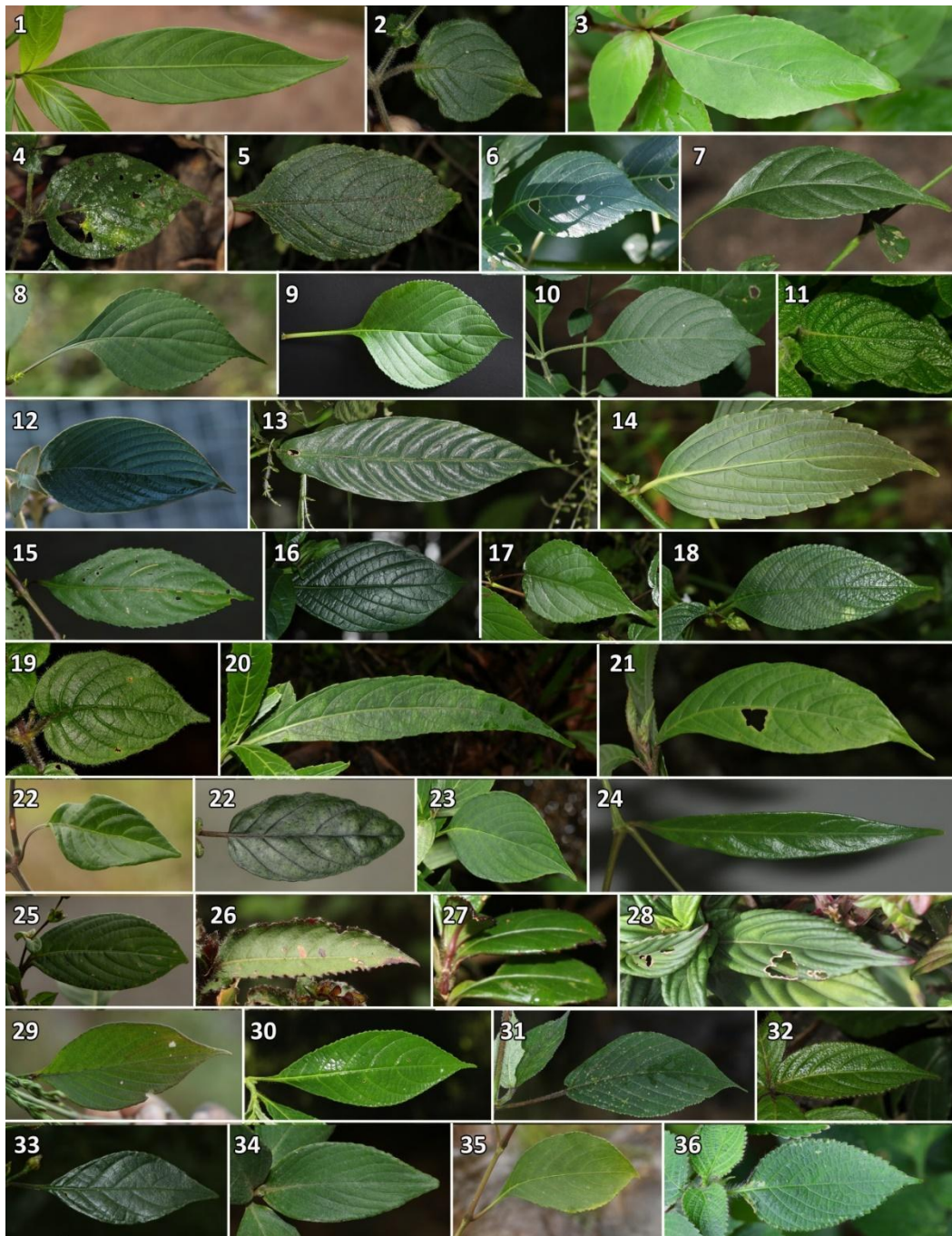


Figure 10. Morphological variation of leaf of Sri Lankan *Strobilanthes*

1. *Strobilanthes. adenophora*; 2. *S. anceps*; 3. *S. rhytisperma*; 4. *S. arnottiana*; 5. *S. calycina*; 6. *S. cordifolia*; 7. *S. deflexa*; 8. *S. diandra* var. *diandra*; 9. *S. diandra* var. *densa*; 10. *S. exserta*; 11. *S. gardneriana*; 12. *S. gossypina*; 13. *S. habracanthoides*; 14. *S. hamiltoniana*; 15. *S. helicoides*; 16. *S. hookeri*; 17. *S. laxa*; 18. *S. lupulina*; 19. *S. medahinnensis*; 20. *S. nigrescens*; 21. *S. pulcherrima*; 22. *S. punctata*; 23. *S. reptans*; 24. *S. schomburgkii*; 25. *S. sexennis* var. *sexennis*; 26. *S. sexennis* var. *hirsutissima*; 27. *S. sexennis* var. *cerinthoides*; 28. *S. sexennis* var. *glaberrima*; 29. *S. stenodon*; 30. *S.*

thwaitesii; 31. *S. vestita*; 32. *S. viscosa* var. *viscosa*; 33. *S. walkeri*; 34. *S. willisii*; 35. *S. zeylanica*; 36. *S. RMRN_123*

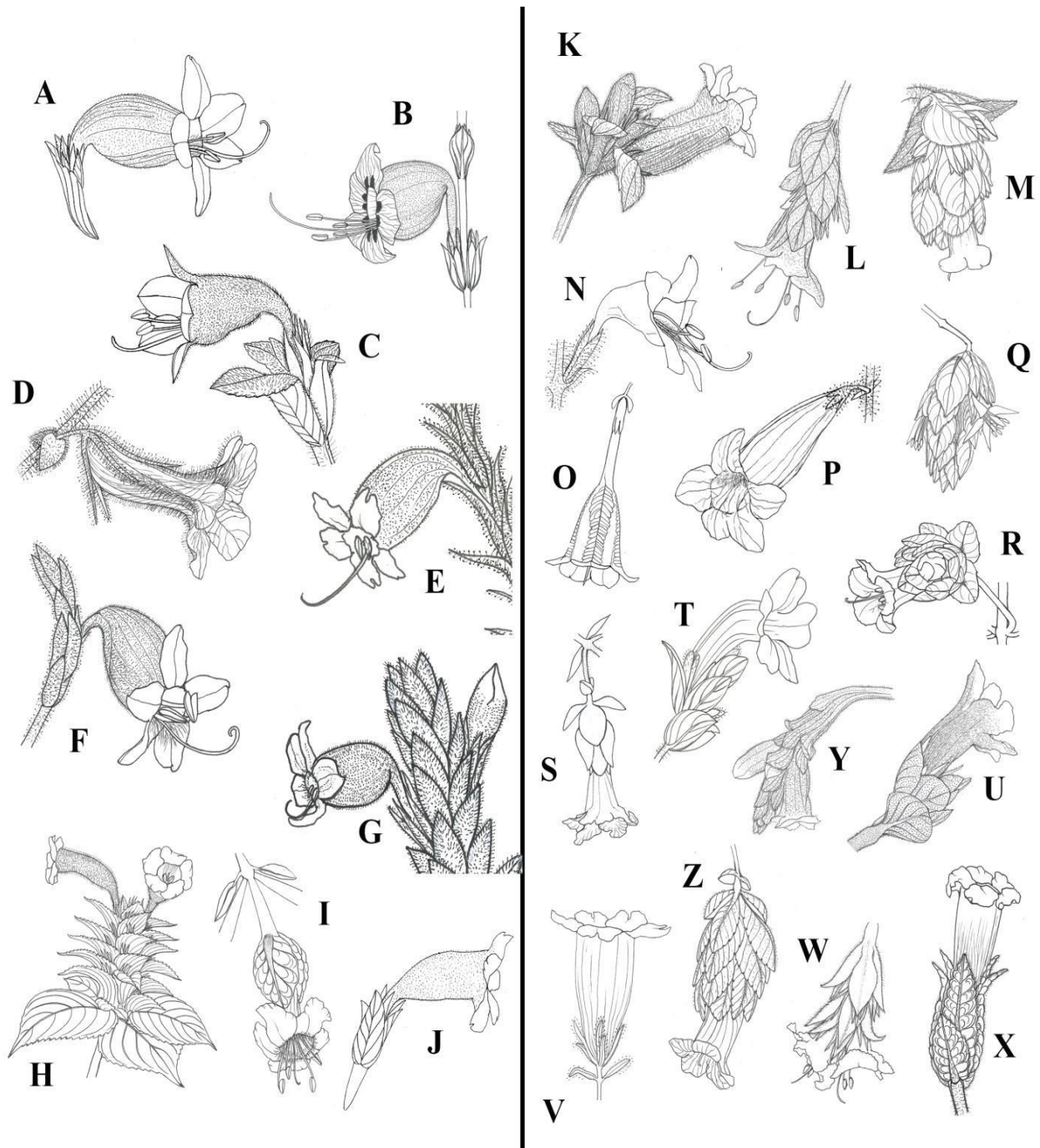


Figure.11. Corolla Shapes

Left - Abruptly campanulate from a narrow cylindrical base; A. *S. adenophora*; B. *S. cordifolia*; C. *S. exserta*; D. *S. pulcherrima*; E. *S. nigrescens*; F. *S. viscosa*; G. *S. rhamnifolia*; H. *S. zeylanica*, I. *S. walkeri*; J. *S. deflexa*. Right - Gradually expanded from the base; K. *S. anceps*; L. *S. arnottiana*; M. *S. calycina*; N. *S. diandra*; O. *S. hamiltoniana*; P. *S. habracanthoides*; Q. *S. laxa*; R. *S. hookeri*; S. *S. lupulina*; T. *S. sexennis*; U. *S. punctata*; V. *S. helicoides*; W. *S. vestita*; X. *S. thwaitesii*. Y. *S. medahinnensis*, Z. *RMRN_123* (Nilanthi, 2019).

4. Discussion

The highest numbers of *Strobilanthes* species were recorded from Foothills of Adam's Peak and Ambagamuwa Floristic Zone which geographically runs from Maskeliya to the upper Kelani valleys in the northwest and south through lowland Ambagamuwa, Ginigathena, Deraniyagala, through Kuruwita-Erathne and then eastwards through Rassagala (Balangoda) to mid zone of Belihul Oya (Ashton and Gunatilleke, 1987). The region experiences high rainfall throughout the year. It is the wettest and least seasonal part of the lowlands in the whole county (Ashton and Gunatilleke, 1987). The deep valleys which flank the western part of the mountain range are refuged for highly localized endemic species. The high floristic diversity has resulted from the varied geographical and climatic conditions.

The second highest numbers of *Strobilanthes* species (11 no. of species) were distributed on Knuckles Floristic Zone which is a complex of several forest types, such as tropical lower montane forest, tropical upper montane forest, lowland tropical semi evergreen forest and lower montane tropical semi evergreen forest.

The lowest numbers of *Strobilanthes* species (only one species) are distributed on Southern Arid Floristic Zone and Northern Arid Floristic Zone because these zones are the most arid landscapes found in the north and north-western part of the island and the south-eastern corner of the island. These arid regions receive below 1,000mm (or 800mm) of rainfall annually (Somasekaram, 1988). On average, the region experiences a dry period of more than 6 months annually. The vegetation of the arid zone consists mainly of thorn woodland, with thorn bearing shrubs and scattered trees across the landscape.

S. caudata may have become extinct as a result of their habitats being lost to agriculture while *S. hypericoides* and *S. pentandra* are recorded only from the type collections. New species *S. medahinensis* has been described very recently.

The principle threats in the study area are urbanization, cultivation, tourism activities, fire, overgrazing, pollution, road and dam constructions. In near future, plant diversity may decline and threatened species may disappear in the area if necessary conservation measures are not taken.

5. Conclusion

There is a rich *Strobilanthes* diversity, different habitats and vast distribution range in Sri Lanka and It is possible that more new species remain to be discovered.

Acknowledgements

The authors are grateful to the Department of Wildlife Conservation, Sri Lanka and Department of Forest Conservation, Sri Lanka for giving permission to collect samples and National Herbarium (PDA), Royal Botanic Gardens, Peradeniya for giving permission to examine specimens. Many thanks to Rukmal Ratnayake for the line drawings. We acknowledge the Ecosystem Conservation and Management Project (EACAMP) for financial support.

References

- Alexiades, M.N. 1996. Collecting ethnobotanical data: an introduction to basic concepts and techniques. *Advances in Economic Botany*, 10: 53-94.
- Anderson, T. 1860. Acanthaceae. In: Thwaites, G.H.K. (Ed.) *Enumeratio Plantarum Zeylaniae* 3. Dulau & Co., London: 161-240.
- Ashton, P.S. & Gunatilleke, C.V.S. 1987. New light on the plant geography of Ceylon. 1. Historical plant geography. *Journal of Biogeography*, 14: 249-285.
- Blume, C.L. 1826. *Bijdragen tot de Flora van Nederlandsch Indie* 14. Batavia. Ter Lands Drukkerij, *Batavia*: 781.

- Bremekamp, C.E.B. 1944. Materials for a monograph of the *Strobilanthinae*. Verhandelingen der Nederlandsche Akademie van Wetenschappen Afdeeling Natuurkunde, *Tweede Sectie*, 41(1): 1-305.
- Carine, M.A., Jayasekara, P. and Scotland, R.W. 2000. A New Species of *Strobilanthes* Blume (Acanthaceae) from Sri Lanka. *Kew Bulletin*, 55(4): 971-976.
- Clarke, C. B. 1884. Acanthaceae. In: Hooker, J.D. Flora of British India, 4. L. Reeve & Co., London: 429-477.
- Deng, Y. F. 2019. Transfer of the Philippine species of *Hemigraphis* Nees to *Strobilanthes* Blume (Acanthaceae). *Phytotaxa*, 404 (5): 1-3.
- Hu, J.Q., Deng, Y.F. & Wood, J.R.I. 2011. *Strobilanthes*. In: Wu, Z.Y., Raven, P.H. & Hong, D.Y. (Eds.) Flora of China 19. Science Press, Beijing & Missouri Botanical Garden Press, St. Louis: 381-429.
- Janzen, D.H. 1976. Why bamboos wait so long to flower. *Annual Review of Ecology and Systematics*, 7: 347-391.
- Josekutty, E.J., P. Biju, J. R.I. Wood and J. Augustine. 2018 *Strobilanthes kannanii*—a new species of Acanthaceae from the Western Ghats, India. *Nordic Journal of Botany*, 36: 01689.
- Mabberley D.J. 2017. Mabberley’s Plant-book: a portable dictionary of plants, their classification and uses. 4th edition. Cambridge University Press, Cambridge: 1102.
- Mascarenhas, M.E. and M.K. Janarthanam. 2013. Taxonomic status of *Strobilanthes warreensis* (Acanthaceae), an endemic species of Western Ghats, India. *Rheedea*, 23: 1-6.
- Nees von Esenbeck, C.G. 1832. Acanthaceae Indiae orientalis. In: Wallich, N. (Ed.) *Plantae Asiaticae rariores* 3. Treuttel, Würtz & Ritter, London: 70-117.
- Nilanthi, R.M.R., Samarakoon, H., Jayawardana, N., Wijesundara, S. and Bandaranayake, P.C.G. 2021 *Strobilanthes medahinnensis* (Acanthaceae) a new species, based on morphological and molecular data, from the Peak Wilderness Nature Reserve, Sri Lanka. *Phytotaxa*, 514(1): 26-38.
- Patil, S. 2021. *Strobilanthes pushpagiriensis* (Acanthaceae): a new species from Western Ghats, India. *Nordic Journal of Botany*, 39(5).
- POWO 2019. Plants of the World Online. Royal Botanic Gardens, Kew <www.plantsoftheworldonline.org/>, accessed 20 Nov 2020.
- Somasekaram, T. 1988. National Atlas for Sri Lanka. Survey Department Colombo, pp. 1–141.
- Vahl, M. 1794. *Symbolae Botanicae*. 3. Moller, Copenhagen: 147.
- Venu, P. 2006. *Strobilanthes* Blume (Acanthaceae) in Peninsular India. Botanical Survey of India, Kolkata: 216.
- Wood, J.R.I. and Scotland, R.W. 2009 New and little-known species of *Strobilanthes* (Acanthaceae) from India and South East Asia. *Kew Bulletin*, 64: 3-47.
- Wood, J.R.I. 1994. Notes relating to the flora of Bhutan: XXIX. Acanthaceae, with special reference to *Strobilanthes*. *Edinburgh Journal of Botany*, 51(2): 175-273.
- Wood, J.R.I. 1995. Notes on *Strobilanthes* for the flora of Ceylon. *Kew Bulletin*, 50(1): 1-24.
- Wood, J.R.I. 1998. *Strobilanthes*. In: Dassanayake, M.D. (Ed.), A revised handbook to the flora of Ceylon. A.A Balkema, Rotterdam: 30–74.
- Wood, J.R.I. 2014. New Names and Combinations in Indian Acanthaceae *Novon: A Journal for Botanical Nomenclature*, 23(3): 385-395.
- Wood, J.R.I., Borah, D. and Taram, M. 2021. The rediscovery of *Strobilanthes tubiflos* (Acanthaceae) in north east India. *Kew Bulletin*, 76: 333-338.