



DUNE HD *Smart*

New ideology for home cinema



<http://www.dune-hd.com>



DUNE HD *Smart*

New ideology for home cinema



- ✓ Module for playback of CD/DVD/Blu-ray discs and their images.
- ✓ Module for installing 3.5" SATA HDD with hot-swap support.
- ✓ Module with slots for future extension boards.
- ✓ Supports playback of digital TV programs.
- ✓ Plays all major audio and video formats.
- ✓ Supports Movie Collection applications.
- ✓ Allows firmware upgrades to improve player features.
- ✓ Supports SD memory cards.



HDMI™ 1.3
HIGH DEFINITION MULTIMEDIA INTERFACE

realD
The New 3D

Blu-ray

DVD
VIDEO

COMPACT
disc
DIGITAL AUDIO

BitTorrent

SERIAL
ATA

DMA
NETWORK

APE

MKV

flac
free lossless audio codec

Internet

IP
TV

USB 2

<http://www.dune-hd.com>

An innovative media-platform

HDI Dune is proud to present the whole new series of devices called the Dune HD Smart. These new models have also been given a new home. As of Autumn 2010 our company shifted production facilities to Taiwan, a country well known for its “Japanese” approach to the manufacture of electronics. The new models are also coming with a two-year manufacturer’s guarantee.

Dune HD Smart product series introduces a revolutionary concept of creating a home theatre system hub. This is the first media-platform on the market to adopt a modular approach, which allows the features of the base module (media-player) to be augmented simply by adding extension modules.

Depending on requirements, the user currently has a choice of three different base module configurations: Smart B1 (media player with a built-in silent Blu-ray optical drive), Smart H1 (media player with a SATA HDD rack with hot-swap support), and Smart D1 (media player with a built in display and the option to install a 3.5” SATA hard drive).

As well as this, anyone who owns a media player from the Dune HD Smart series can add features to the player using the optional extension modules, the following three of which will be available shortly: Smart HE (a “hot swap” hard drive compartment), Smart BE (a Blu-ray optical drive module), and Smart ME (a module for two extension boards).

The number of modules available for the Dune HD Smart will increase in the future. One of the important features of the Dune HD Smart extension modules is their compatibility with the recently announced new company’s flagship model the Dune HD Max.

A standard Dune HD Smart system layout consists of two, three or more components, one of which is the base module (media player), and the rest extension modules. Remarkably, all the modules in the HD Smart series are identical in size and design, this allows you to combine them into one system any way you like. For example, if you install two Smart HE modules, one ME and BE module to the Dune HD Smart D1 base module, you would even surpass the capabilities of the Dune HD Max media player.

What’s also interesting is that people who own more than one module from the Dune HD Smart series will be able to connect several modules together. Special fasten brackets to connect two or three modules will be separately available.

Furthermore, when three modules are connected together, such a set has exactly the front size and close look of Dune HD Max. It means that any such set of Dune HD Smart modules can easily fit into the rack with high class AV equipment at user’s home.

Each of the base Dune HD Smart modules features three standard USB 2.0 ports to connect external storage and extension devices, as well as a USB slave port (excluding the Smart B1).

In terms of functionality, the Dune HD Smart media players are no less capable than the current 3.0 ranges. They support practically all audio and standard and high definition video formats and play DVD and Blu-ray discs (Smart B1 or media player with the Smart BE module) and images with ease. Special notice should be taken of the extremely fast networking speeds, the IPTV and Internet Radio functions, as well as the built-in torrent-client and Internet browser, not to mention the constant product development. New functions and supported formats are brought to the Dune HD players with the release of each firmware version.

The Dune HD Smart H 1, D 1 and B 1 models, are fully fledged universal media players, which supports standard and high-definition video playback all the way up to Full HD (1080p). Each of them can also be used as a base unit (base module) for creating your own customised media player using the optional expansion modules. These devices are launches HDI Dune's new product series which introduces a revolutionary concept of creating a home theatre system hub or their new modular approach to media players.

Furthermore, people who own more than one module from the Dune HD Smart series will be able to connect several modules together. Different devices to connect two or three modules will be available. When these separate modules are linked, they are no bigger in size or shape than a standard media player.

Base Modules



Dune HD Smart H1

The Dune HD Smart H1 media player is compact, features a built-in 3.5" SATA HDD rack with hot-swap support, three high-speed USB 2.0 ports, one USB Slave port, an SD memory card slot, and an eSATA port for external drives. Video outputs of the model are represented by HDMI v1.3, composite and component analog outputs. Sound can be output via HDMI, Toslink optical interface, and RCA stereo.





Dune HD Smart D1

The Dune HD Smart D1 media player is compact, features a built-in info display, and the possibility to install a 3.5" SATA HDD inside the case. Besides, it is equipped with three high-speed USB 2.0 ports, one USB Slave port, an SD memory card slot, and an eSATA port for external drives. Video outputs of the model are represented by HDMI v1.3, composite and component analog outputs. Sound can be output via HDMI, Toslink optical interface, and RCA stereo.



Dune HD Smart B1

The Dune HD Smart B1 media player is compact, features a built-in low-noise optical disc drive (CD/DVD/Blu-ray) based on Sony mechanics and optics, specially designed for usage in home cinema systems. This allows the owner of Smart B1 to play back all commercial discs from CDDA to DVD and Blu-ray discs. Besides, it is equipped with three high-speed USB 2.0 ports and an SD memory card slot. Video outputs of the model are represented by HDMI v1.3, composite and component analog outputs. Sound can be output via HDMI, Toslink optical interface, and RCA stereo.



Extension Modules



Dune HD Smart ME Extension Module

The Smart ME extension module allows to extend Dune HD players capabilities with two ports for extension boards. In particular, in the nearest future there will be available extension boards with DVB-T/T2, DVB-S/S2, DVB-C (aerial, satellite and cable TV), including boards with a slot for access cards needed for reception of encrypted digital channels.

The Smart ME module may be connected to a Dune HD player using the enclosed USB Host-Host special cable, to any of the USB 2.0 Host ports of the player.



Dune HD Smart HE Extension Module

The Smart HE extension module allows to extend Dune HD players capabilities with a rack for installation of 3.5 inch SATA HDD with hot-swap support. Besides, connection to a player may be performed by either USB 2.0 or eSATA interface.

Also, if desired, the Smart HE module may be used with a PC as a USB or eSATA HDD box. Being connected to a Dune player or a PC via USB 2.0 interface (using the USB Slave connector on the rear panel of the extension module) the module also serves as a USB hub: two USB Host 2.0 connectors of the module may be used to connect additional external devices which are therefore made available to the Dune player or the PC.

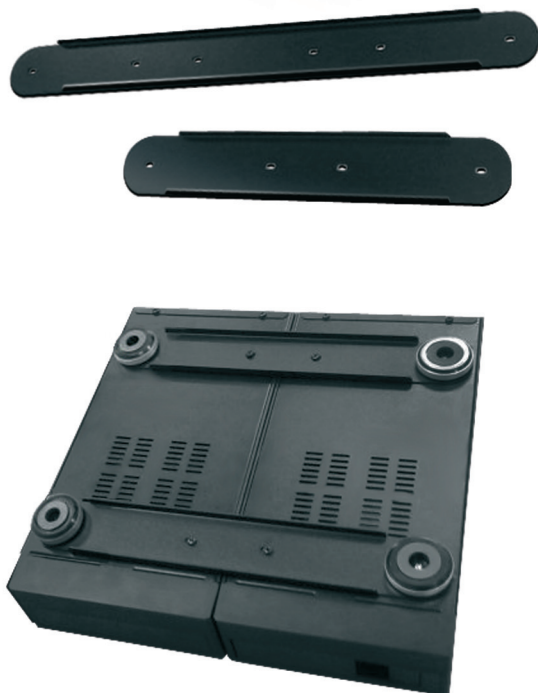




Dune HD Smart ME Extension Module

The Smart BE extension module contains a special Blu-ray drive for players of premium class, which incorporates low-noise mechanics and optics manufactured by Sony. This module allows to extend Dune HD players capabilities with playback of original and user-recorded Blu-ray discs, DVDs and CDs. The Smart BE extension module is equipped with eSATA interface for the most efficient work with a player (eSATA-eSATA cable comes bundled for connecting to a player).

Fasten Brackets



Fastening Brackets for Dune HD Smart Family Devices (2X/3X)

Fastening brackets are intended for physical connection of any two or three modules of Dune HD Smart family together. These brackets are mounted to the bottom of the devices and are fastened to Dune HD Smart modules at the places intended for feet fastening.

Installing the brackets is extremely easy: use a screwdriver (included) to unscrew all 4 feet of each of the modules being fastened together. Then mount the fastening brackets instead of the feet with the same screws which were used to fasten feet. On the outer sides of the resulting construction, mount 4 feet: 2 at each side (see the picture).

Key Features:

- **The newest Sigma Designs 8642/8643 media processor:** enjoy excellent playback and performance of interactive features.
- **Blu-ray and DVD player:** play Blu-rays and DVDs (plus Audio CD and data discs with video/music/photo files). (B1/BE only)
- **HDD player:** connect an HDD to the player and play content directly from the HDD.
- **Network player:** connect the player to a local network and play content directly from PC or NAS (UPnP, SMB, NFS).
- **MKV player:** play HD and SD video in a popular MKV format and other modern video file formats, including top quality HD video with very high bitrate.
- **RealID:** watch 3D video in this ultra modern format used in cinema for the latest movies.
- **HD audio:** enjoy top-quality audio tracks (Dolby True HD, DTS HD Master Audio, LPCM, FLAC).
- **3 USB ports:** conveniently connect HDDs, USB flash drives, USB card readers and other USB storage devices.
- **eSATA port:** connect an HDD via the most efficient eSATA interface.
- **HDD rack with hot swap function:** easily and quickly insert and exchange internal 3.5" SATA HDD. (H1/HE only).
- **USB slave port:** easily and quickly transfer files between the HDD in the player and a PC. (H1/D1 only).
- **Internal HDD option:** use an optional 3.5" SATA HDD installed directly inside the player (D1 only).
- **SD card slot:** easily play media files on SD memory cards from your camera or other devices, or use an SD memory card as a local or system storage (required for BD Live function).
- **HDMI 1.3:** ensure the best possible quality of HD video and HD audio.
- **A rich set of standard A/V connectors:** use S/PDIF optical audio, stereo audio, component video, composite video outputs to easily connect any A/V equipment.
- **Flexible support for Dolby True HD and DTS HD Master Audio:** output as bitstream or decode to LPCM for flexibility when connecting audio equipment.
- **Video output flexibility:** output video in any resolution and format (from SD to 1080p, 24p/PAL/NTSC).
- **Upscaling:** high quality upscaling of any SD video content to Full HD (1080p) or other HD resolution.
- **File browser:** convenient file browser with powerful file management (copy, move, delete, rename, organize, sort).

* Digital TV USB dongle is not included; this option can be acquired separately

Extra Functions:

- **High-quality music playback:** play very high-quality (up to 192 Khz / 24-bit) music files in various formats (FLAC, Monkey's Audio APE, WAV/PCM, DTS, etc).
- **Playlists:** build playlists from your folders, use your own playlists, use repeat and shuffle functions.
- **Customizable user interface:** work with media collections using cover art and icon browsing (with Full HD graphics).
- **NAS function:** access files on storage devices (HDD, optical drive, etc) attached to the player from the local network (using SMB or FTP).
- **BitTorrent:** use built-in BitTorrent client to download files from P2P networks.
- **Customizable user interface:** work with media collections using cover art and icon browsing (with Full HD graphics).
- **Flash applications:** extend the player functionality with FlashLite applications.
- **Internet radio:** playback and record various Internet radio stations (HTTP/MP3).

*IPTV: playback and record IPTV streams (multicast UDP/RTP) from your Internet provider

**Digital TV option: playback and record Digital TV channels using an optional Digital TV USB dongle

***Internet browsing: view Internet Web sites on your TV using the built-in Web browser



<http://www.dune-hd.com>