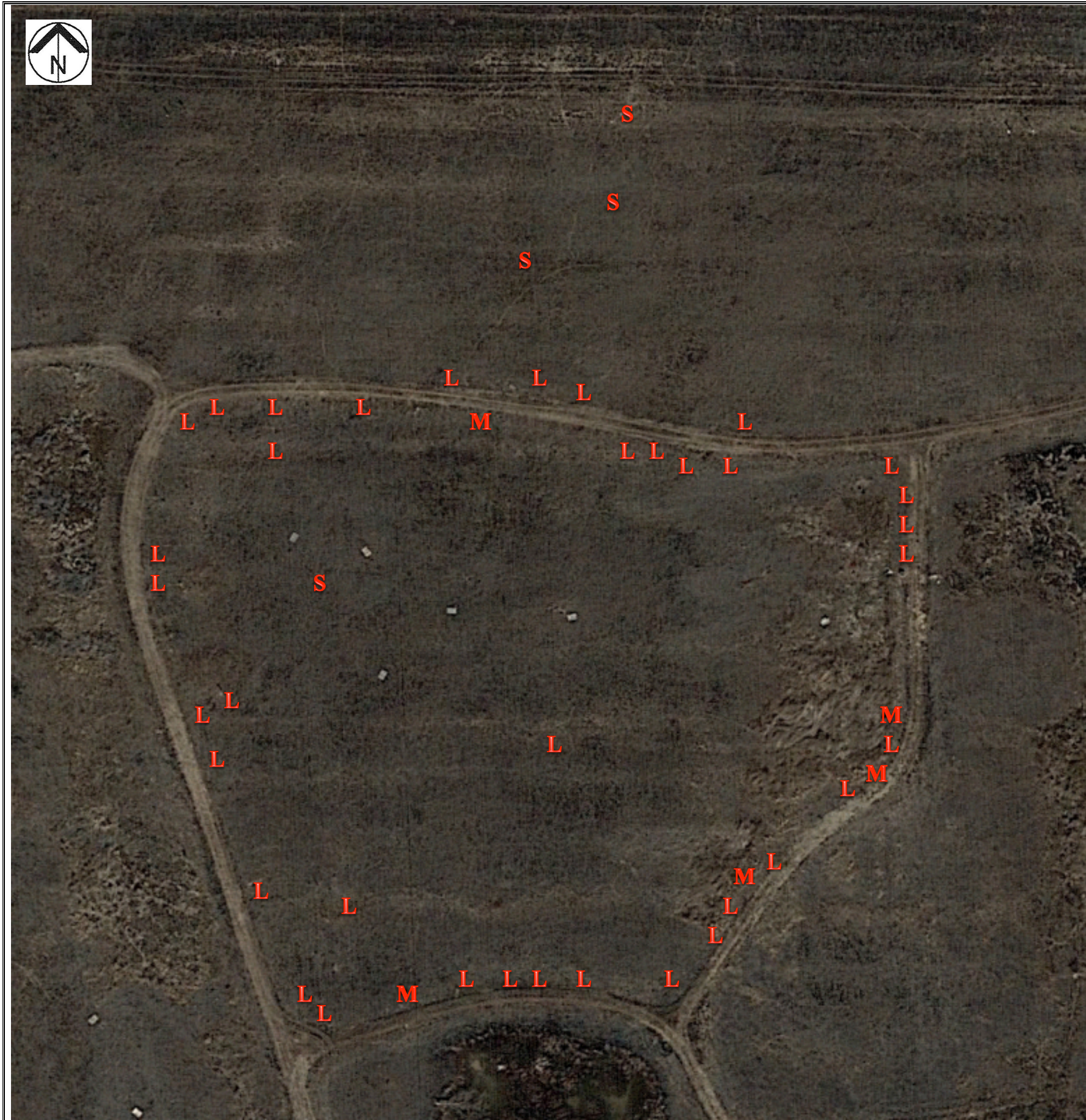


# Wetland Cell E-1 2018 Invasive Species Aerial Image



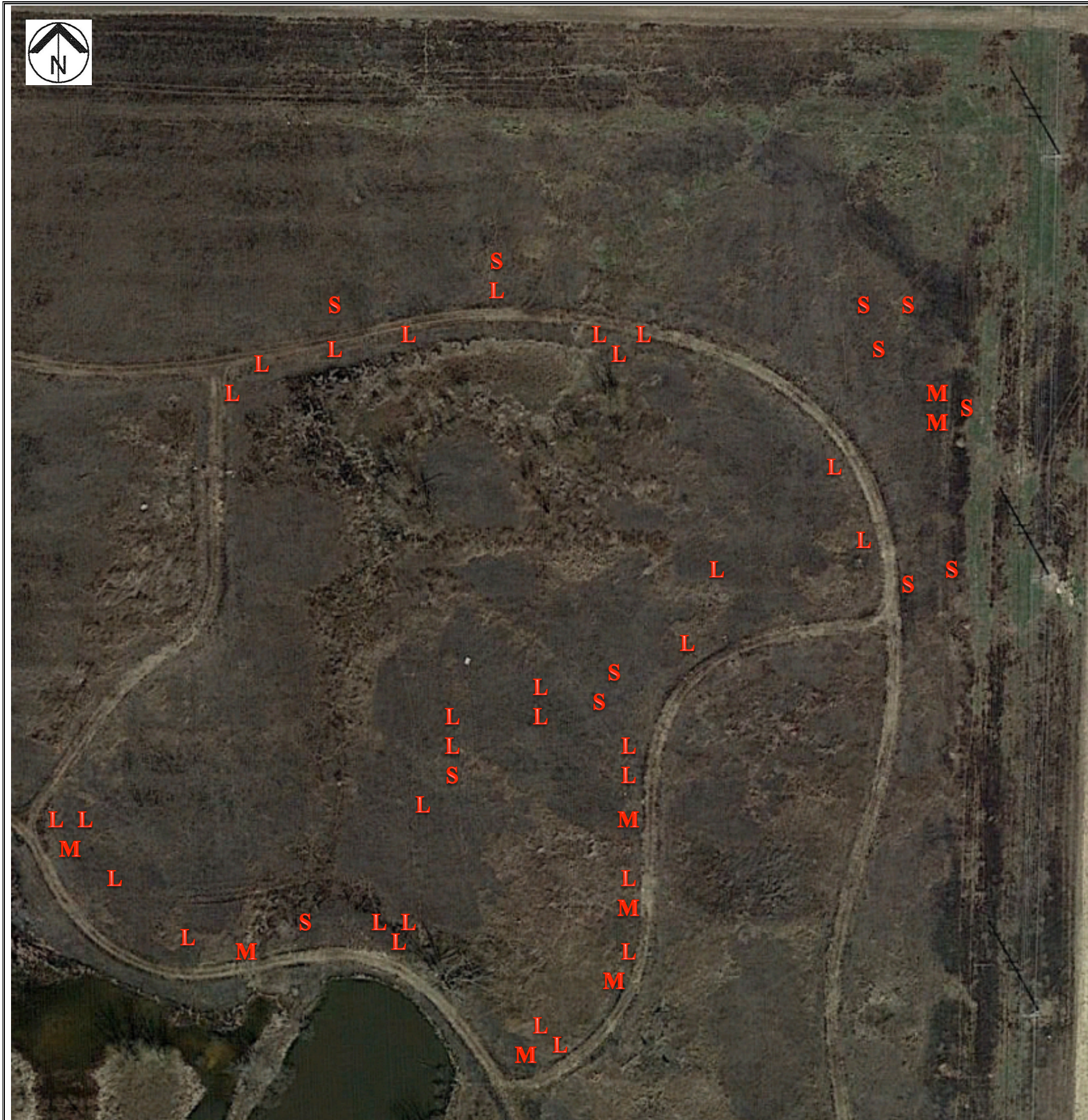
## LEGEND:

- L – SERICEA LESPEDEZA (*LESPEDEZA CUNEATA*)
- M – WHITE SWEET CLOVER (*MELILOTUS ALBUS*)
- S – JOHNSONGRASS (*SORGHUM HALEPENSE*)





# Wetland Cell E-2 2018 Invasive Species Aerial Image



## LEGEND:

- L – SERICEA LESPEDEZA (*LESPEDEZA CUNEATA*)
- M – WHITE SWEET CLOVER (*MELILOTUS ALBUS*)
- S – JOHNSONGRASS (*SORGHUM HALEPENSE*)





# Wetland Cell E-3 2018 Invasive Species Aerial Image



**LEGEND:**  
L – SERICEA LESPEDEZA (*LESPEDEZA CUNEATA*)  
M – WHITE SWEET CLOVER (*MELILOTUS ALBUS*)  
S – JOHNSONGRASS (*SORGHUM HALEPENSE*)  
P – CALLERY PEAR (*PYRUS CALLERYANA*)





# Wetland Cell E-4 2018 Invasive Species Aerial Image



**LEGEND:**

- L – SERICEA LESPEDEZA (*LESPEDEZA CUNEATA*)
- R – HIMALAYAN BLACKBERRY (*RUBUS SERISSIMUS*)
- S – JOHNSONGRASS (*SORGHUM HALEPENSE*)
- P – CALLERY PEAR (*PYRUS CALLERYANA*)
- J – JAPANESE HONEYSUCKLE (*LONICERA JAPONICA*)





# Wetland Cell E-5 2018 Invasive Species Aerial Image



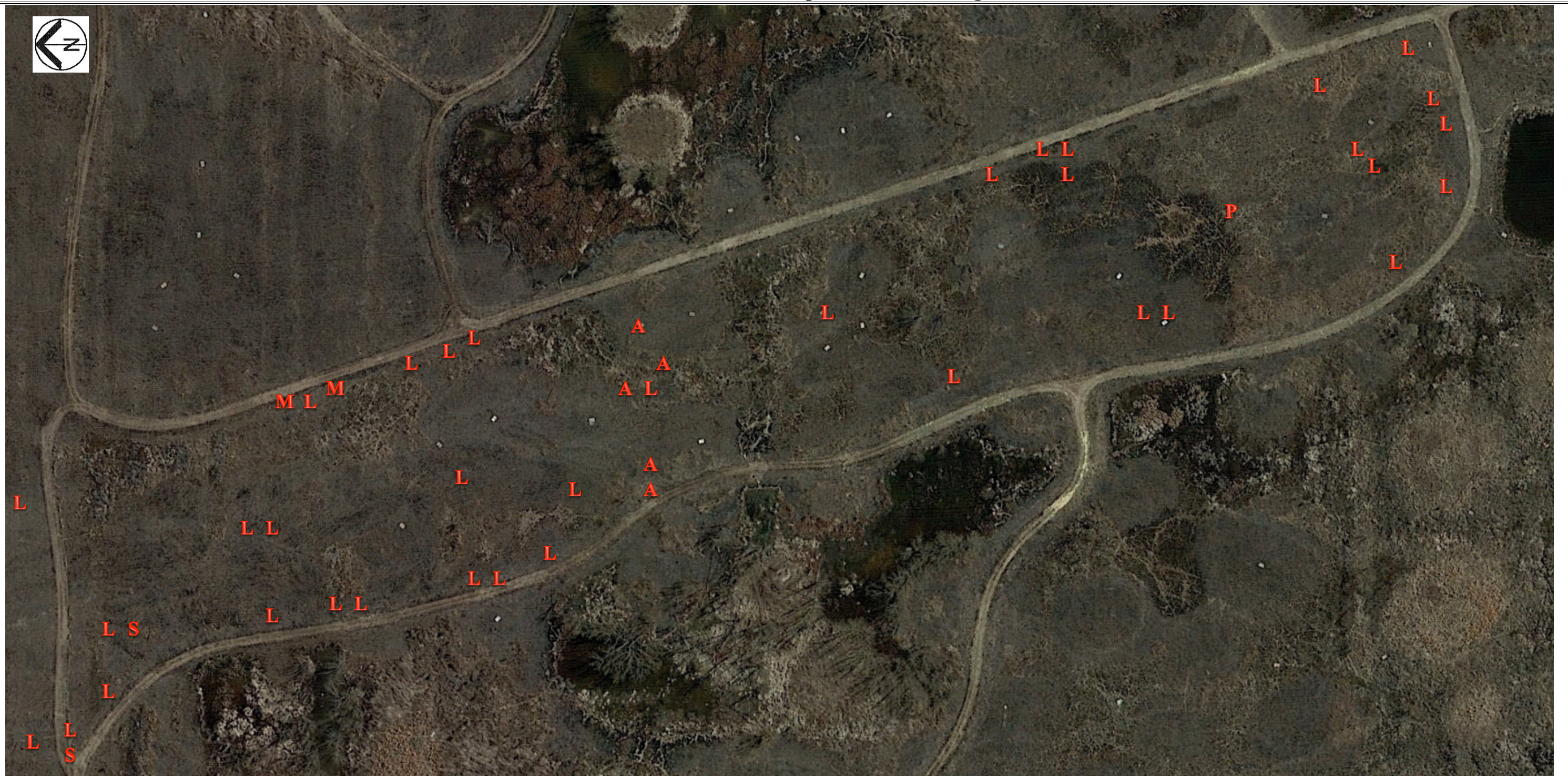
## LEGEND:

- L – SERICEA LESPEDEZA (*LESPEDEZA CUNEATA*)
- RM – MULTIFLORA ROSE (*ROSA MULTIFLORA*)
- S – JOHNSONGRASS (*SORGHUM HALEPENSE*)
- P – CALLERY PEAR (*PYRUS CALLERYANA*)





# Gas Line 2018 Invasive Species Aerial Image



**LEGEND:**

L – SERICEA LESPEDEZA (*LESPEDEZA CUNEATA*)

M – WHITE SWEET CLOVER (*MELILOTUS ALBUS*)

S – JOHNSONGRASS (*SORGHUM HALEPENSE*)

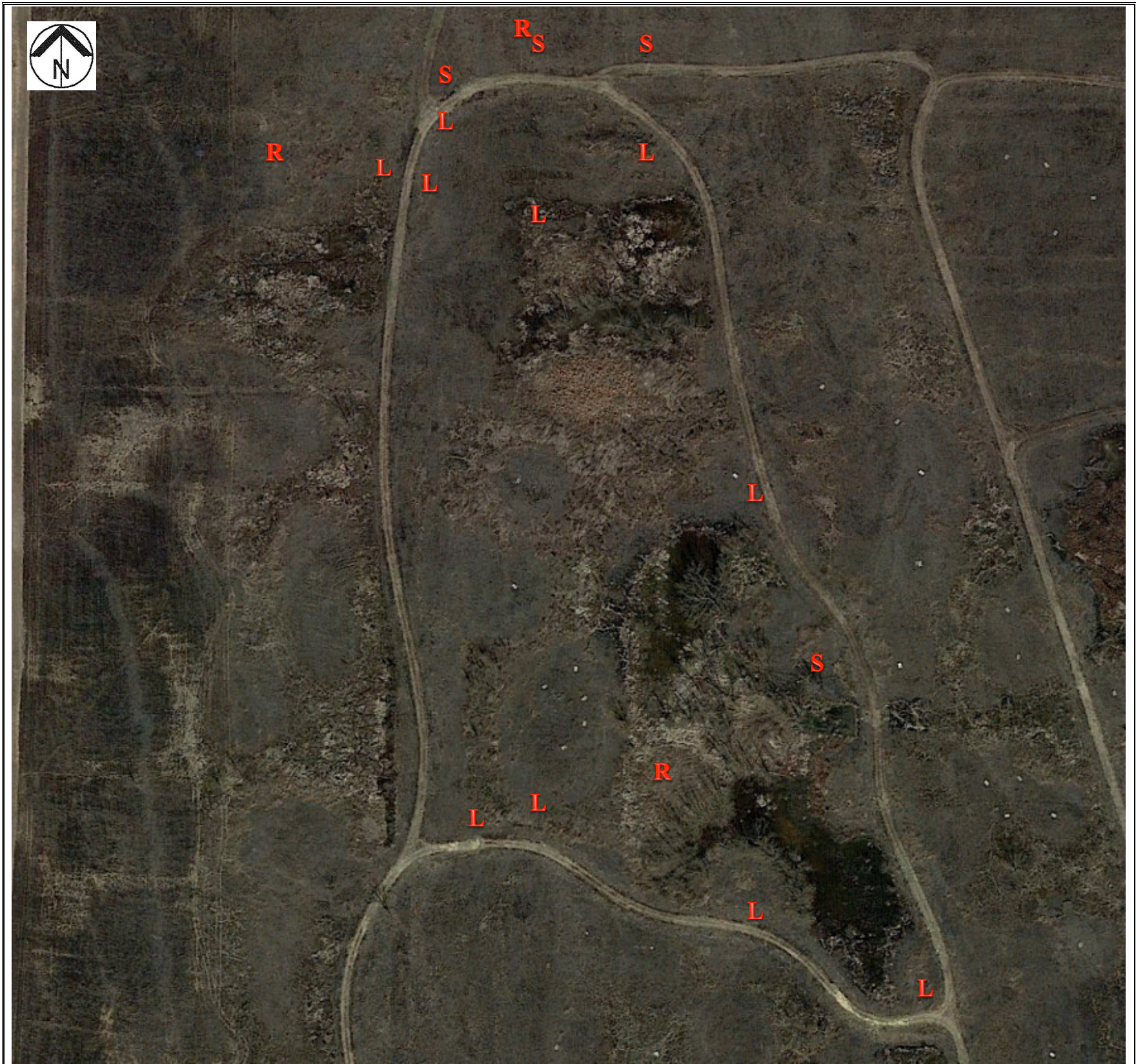
P – CALLERY PEAR (*PYRUS CALLERYANA*)

A – SMALL CARPET GRASS (*ARTHRAOXON HISPIDUS*)





# Wetland Cell W-1 2018 Invasive Species Aerial Image

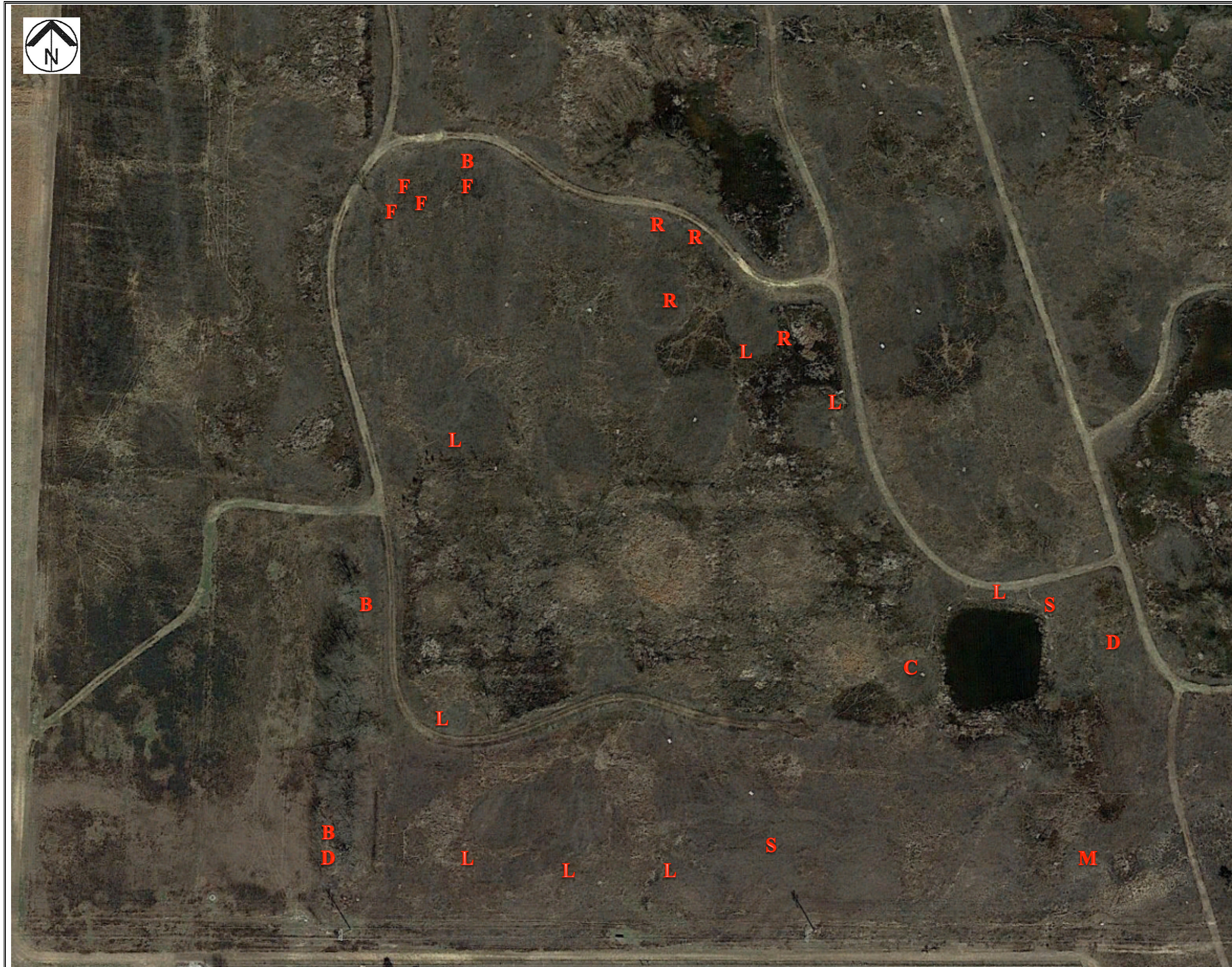


**LEGEND:**  
L – SERICEA LESPEDEZA (*LESPEDEZA CUNEATA*)  
S – JOHNSONGRASS (*SORGHUM HALEPENSE*)  
R – HIMALAYAN BLACKBERRY (*RUBUS SERISSIMUS*)





# Wetland Cell W-2 2018 Invasive Species Aerial Image



## LEGEND:

- L – SERICEA LESPEDEZA (*LESPEDEZA CUNEATA*)
- M – WHITE SWEET CLOVER (*MELILOTUS ALBUS*)
- S – JOHNSONGRASS (*SORGHUM HALEPENSE*)
- R – HIMALAYAN BLACKBERRY (*RUBUS SERISSIMUS*)
- F – TALL FESCUE (*SCHEDONORUS ARUNDINACEUS*)
- B – BROMUS SPP.
- C – CHINESE SILVER GRASS (*MISCANTHUS SINENSIS*)
- D – CURLY DOC (*RUMEX CRISPUS*)

