



rhoi
Restorasi Habitat
Orangutan Indonesia

**ECOSYSTEM RESTORATION CONCESSION (ERC) IN
KALIMANTAN, INDONESIA
FOR ORANGUTAN RELEASE:
a sustainable and responsible solution**

RHOI



rhoi
Restorasi Habitat
Orangutan Indonesia

- WHO is RHOI ?
 - A company that developed by the Borneo Orangutan Survival (BOS) Foundation to apply ERC permit for orangutan release since as a Foundation, BOSF is not entitled to apply for ERC.
- VISION of RHOI:
 - *Preservation of Borneo orangutans and their habitat, as well as Utilization of forest products and environmental service-based sustainable community participation.*

ERC what & where



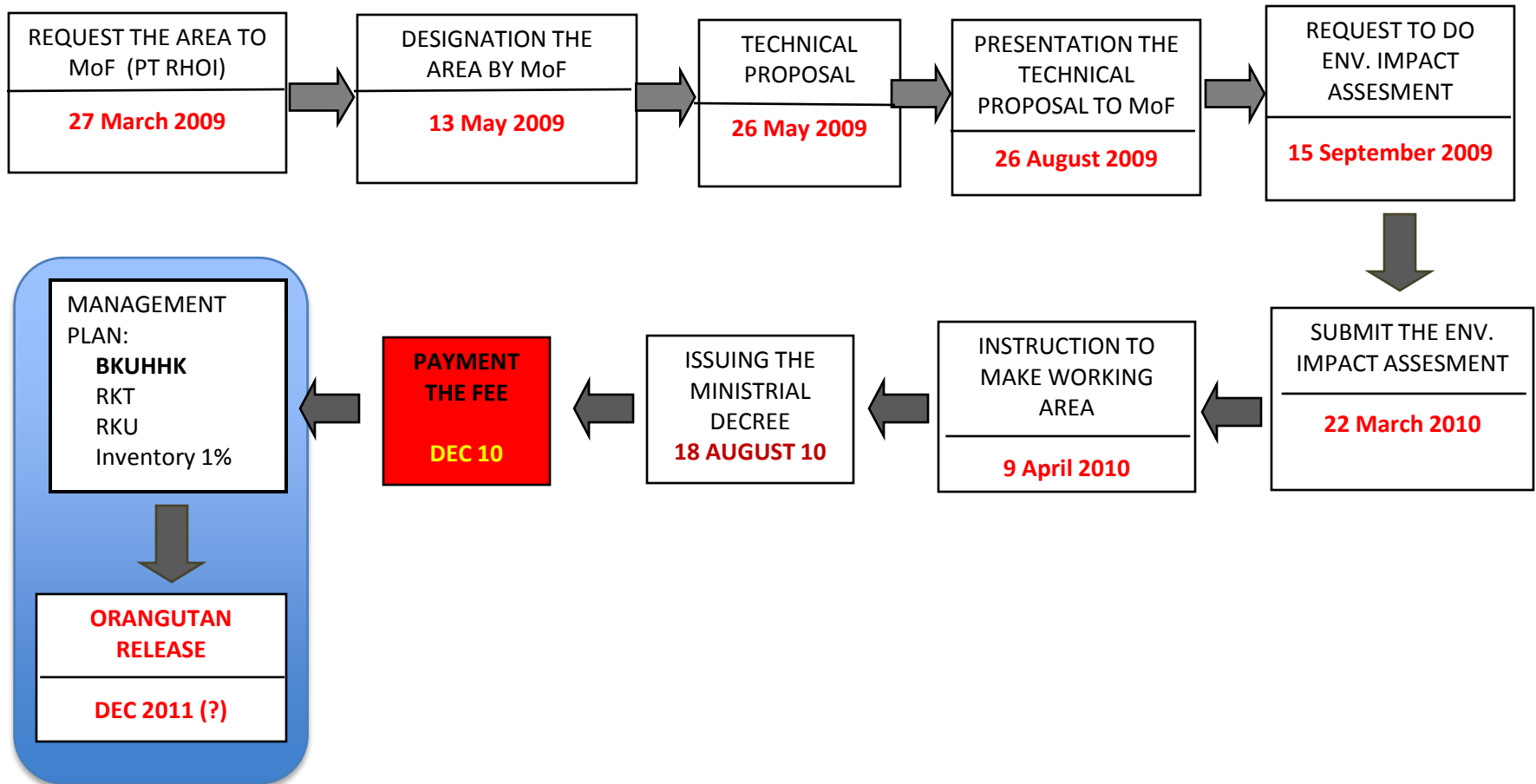
rhoi
Restorasi Habitat
Orangutan Indonesia

- What is ERC ?
 - Aim: to restore the ecosystem
 - Location: Production Forest
 - Duration: 60 years (can be extended for another 35 years, so in total become 95 years)
 - Full Managed by RHOI
- ERC-RHOI forest at:
 - East Kutai & Kutai Kartanegara districts (East Kalimantan) for *Pongo pygmaeus morio*
 - Murung Raya district (Central Kalimantan) (*in progress*) for *Pongo pygmaeus wurmbii*

LEGAL STATUS PROCESS OF RHOI UNIT 1



rhoi
Restorasi Habitat
Orangutan Indonesia



Strategy & Action Plan on the Conservation of Indonesia Orangutan 2007 – 2017



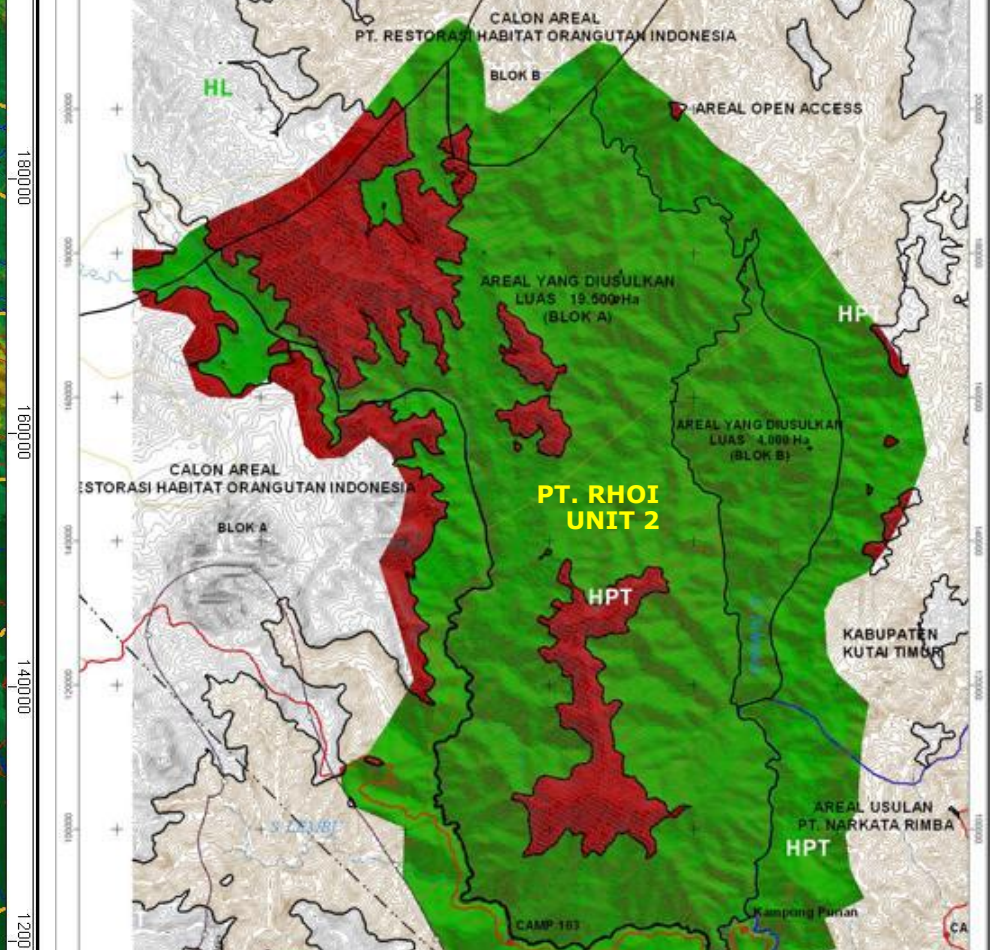
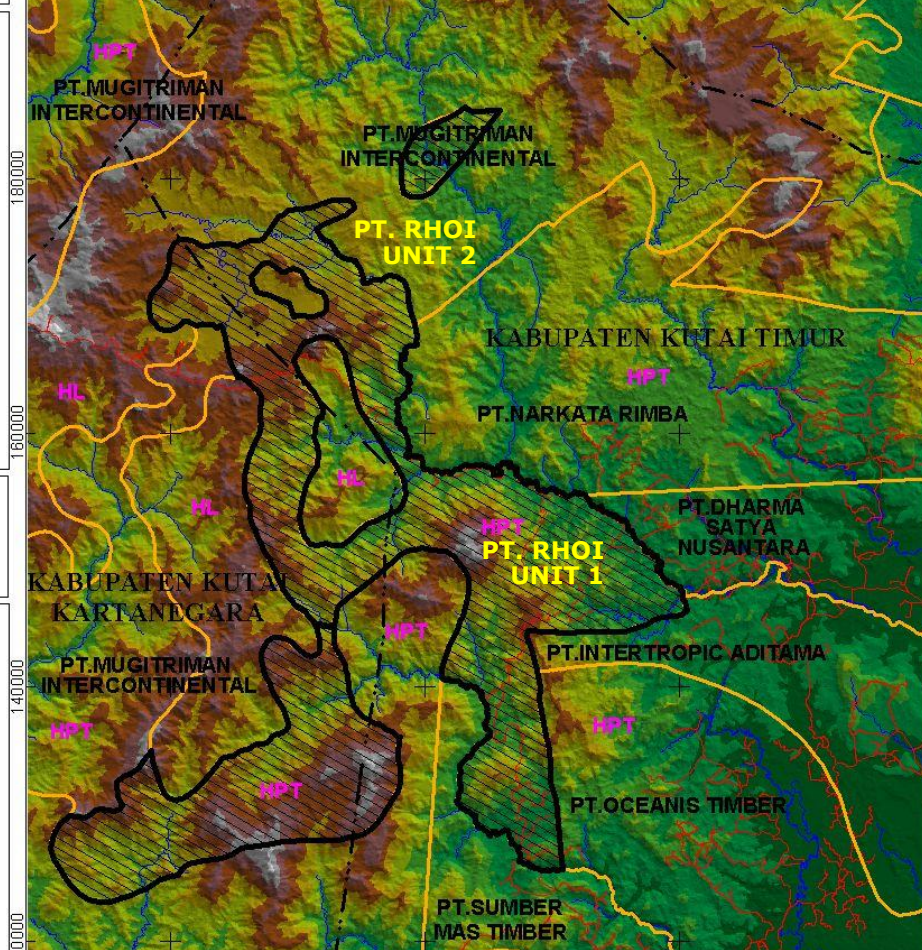
rhoi
Restorasi Habitat
Orangutan Indonesia

- ▶ *'By year 2015, there are **NO** Orangutan at Rehabilitation Center anymore in Kalimantan'*
- ▶ *'It is needed one compact and safe area for releasing orangutan at each orangutan habitat area'*

RHOI 1 & 2	Year	Σ orangutan that will be released (individual)		
		Release I	Release II	Release III
1.	2011	5		
2.	2012	10	10	10
3.	2013	10	10	10
4.	2014	10	10	10
5.	2015	10	12	10
	Total	45	42	40
Total to year 2015		127		



Boundary representation is not necessarily authoritative.



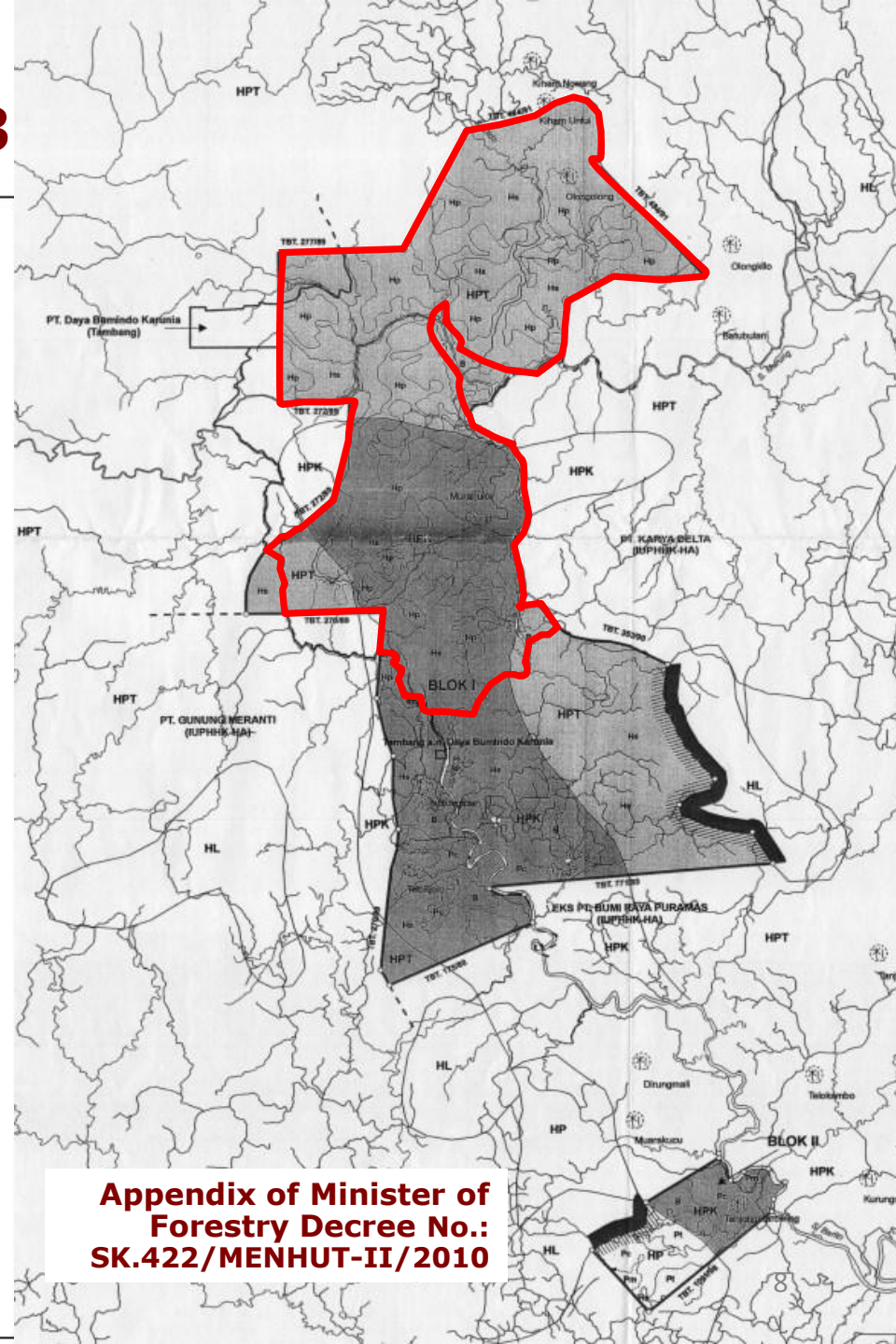
PARAMETER	DESCRIPTION
Area	109.950 ha (RHOI-1: 86.450 & RHOI-2: 23.500)
Geographic Boundaries	1°06'36" - 1°40'48" N 116°01'12" - 116°28'12" E
Location	Muara Wahau & Busang Sub-districts, East Kutai & Kutai Kartanegara Districts, East Kalimantan Province
Forest Condition	91% primary forest and 53% under 900 m asl
Orangutan Food	48%
Local Community	Far from the area (more than 50 km)

ACCESSIBILITIES:

AKSES 1: through Muara Wahau
Samarinda – Muara Wahau = 10 hrs by car,
Muara Wahau - Pelangsiran = 6 hrs by 4WD car

AKSES 2: through Long Lees
Samarinda – Long Lees = 7 hrs by car
Long Lees – location:
(1) by ex-logging road (car)
(2) along Sungai Kelinjau

RHOI UNIT 3



**Appendix of Minister of
Forestry Decree No.:
SK.422/MENHUT-II/2010**

OBLIGATION AS AN ERC HOLDER

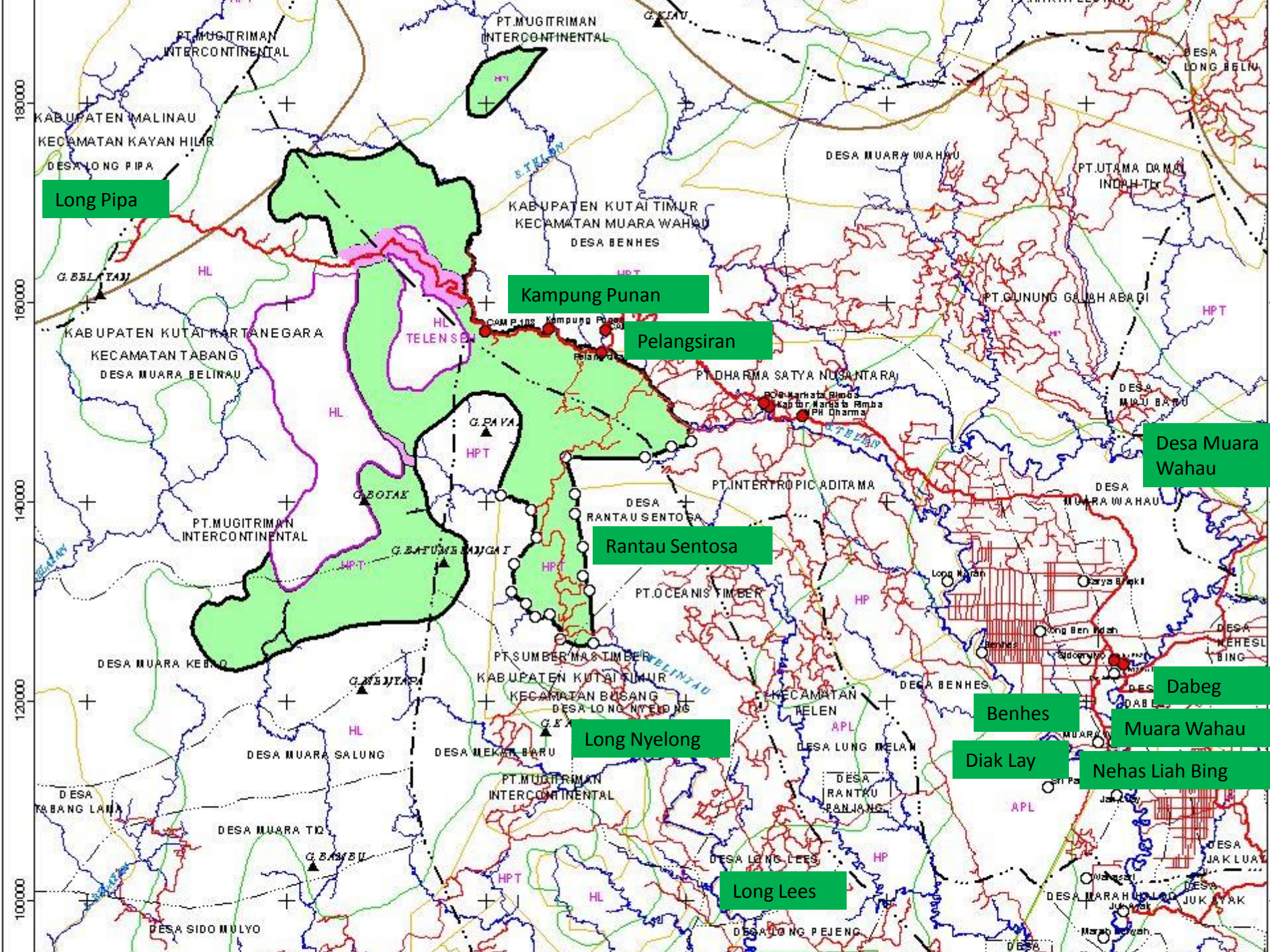


rhoi
Restorasi Habitat
Orangutan Indonesia

- **Technical Plan for Restoration of Production Forest (still productive):**
 - Area protection, forest inventory 1%, PSP, forest product utilization
- **Technical Plan for Restoration of Production Forest (not productive):**
 - planting, area protection, forest inventory 1%, PSP, forest product utilization
- **Technical Plan for Habitat Restoration:**
 - Technical plan for orangutan release, key fauna habitat restoration, and for key flora habitat restoration
- **Forest Protection**
- **Monitoring and Evaluation on Ecosystem Restoration:**
 - Orangutan, key flora and fauna
- **Post-restoration:**
 - Orangutan and habitat protection and environmental services utilization



ROAD CONDITION



Long Pipa

Kampung Punan

Pelangsiran

Rantau Sentosa

Long Nyelong

Long Lees

Desa Muara Wahau

Dabeg

Benhes

Muara Wahau

Diak Lay

Nehas Liah Bing

LOCAL COMMUNITY



rhoi
Restorasi Habitat
Orangutan Indonesia



RHOI's ASSETS



rhoi
Restorasi Habitat
Orangutan Indonesia

2. BIODIVERSITY RICHNESS (at RHOI area in East Kalimantan)

PARAMETER	MAMALIA	BIRD	REPTILIA	AMFIBIA	TREE
Number of species	53	229	15	24	482
Endemic	10	11	-	-	21
IUCN Red List (2008)					
– Critically Endangered	-	-	-	-	6
– Endangered	4	-	-	-	4
– Vulnerable	8	3	-	-	5
– Near Threatened	3	42	-	-	-
– Least Concerned	31	-	-	-	19
– Data Deficient	2	-	-	-	-
CITES					
– Appendix I	5	2	-	-	-
– Appendix II	14	23	3	-	1
– Appendix III	3	-	-	-	-
PP No. 7 th 1999					
– Protected	19	46	-	-	4
ORANGUTAN FOOD	-	-	-	-	229

FAUNA

at RHOI area in Central Kalimantan

(PBU, 1989 – 2004)



rhoi
Restorasi Habitat
Orangutan Indonesia

- **96 species** consists of:
 - **68 species of mammal** &
 - **28 species of birds**
- **15 key species of mammal** such as:
 - orangutan (*Pongo pygmaeus wurmbii*),
 - owa kelawat hybrid (*Hylobates muelleri x albibarbis*),
 - kalong (*Pteropus vampyrus*),
 - Sunbear (*Helarctos malayanus euryspilus*)
- **Birds:**
 - Hornbill (*Buceros rhinoceros*),
 - blue-eared barbet (*Megalaima australis*)



(Tim Fenologi PBU dan PROKT-NM YBOS)

- ▶ **415 tree species: 203 species (48,9%) are orangutan food**
- ▶ Dominated by Dipterocarpaceae (**88 species**), Euphorbiaceae (35 species), Anacardiaceae (18 species)

Location	Nest/km	Diptero %	Density Tree	Density Diptero	Density Non Diptero	Density Liana	Density Ficus	X Area Tree	X Area Diptero	X Area Non Diptero
Gunung Mas	7,6	25,9	334	87	247	90	9	46,1	23	23,1
Busang Hulu	1,2	17,9	409	73	336	99	8	39,3	12,8	26,5
Busang Joloi	< 1	34,6	436	151	285	32	6	33,3	15,9	17,4

X area – diameter (dbh) m²/ ha

POTENTIAL REVENUE



rhoi
Restorasi Habitat
Orangutan Indonesia

- Carbon market
- Hectare-square Adoption
- Released Orangutan Adoption
- Tree Adoption
- Ecotourism & volunteer program
- Virtual gift (restoration)
- Corporate Social Responsibilities (CSR)
- Non-timber Forest Product (rattan, etc)



ECOTOURISM



Challenges



rhoi
Restorasi Habitat
Orangutan Indonesia

- ▶ The only suitable area available
- ▶ Time consuming (Bureucracy) in the legal process (more than 1 year)
- ▶ Ecosystem Restoration fee (full payment for 60 years in advance should be paid off within 1 month upon a Payment Request Letter)
- ▶ Competition in having the local labour with plantation, timber estate, mining etc



A photograph of two orangutans in a cage. Their hands are visible at the top, gripping a wooden bar. Their faces are visible through a gap in the bars below. The text is overlaid on the image.

**I NEED YOUR HELP
TO SEND ME BACK HOME**

THANK YOU