

Team Building

Favorable policies and unique research location have been encouraging young scientists from domestic and overseas to join XTBG. In 2008, there are 15 new staff members from domestic and overseas work in the garden, of whom 6 have PhD degrees, 8 have master degrees, 3 from overseas.

At present 305 fulltime staff members work for XTBG, 65 of them are senior professionals, 46 have PhD degrees, 8 are international staff members.

Adjunct professorship

As one of the leading botanical gardens in China, XTBG aims to expand the knowledge of tropical ecology and plant diversity and to promote the conservation and sustainable development in humid tropical and subtropical areas in China, on the basis of its 50 years experience of tropical plant sciences.

To further develop along this direction and to enhance XTBG's contribution to the science of tropical ecology and relevant disciplines, we invite world-leading scientists as consultants to XTBG, in the hope that more international collaboration and exchange will be enabled.

Adjunct professors of XTBG will be expected to help with the policy-making of institution's scientific activities, developing international collaboration, and co-training graduate students. Furthermore, they will bring the latest outline and prospect of the development of applicable subjects to XTBG staff.

The term of adjunct professor is for two years and can be extended once.

In 2008, Dr. Nicholas J. GOTELLI with the University of Vermont, USA was conferred as adjunct professor for his internationally well-known excellence and reputation in community ecology.

CAS 100 talents program

Talented people are the key to success and development. To attract qualified overseas professionals are an important aspect of XTBG efforts for building an innovative research team. In 2008, 2 scientists with XTBG gained the support from CAS 100 talents program, each granted 2 million Yuan RMB for his research project. The grantees are:

Name	Research field
Prof. XU Zengfu	Functional genomics and genetic engineering of the biodiesel plant
Prof. FANG Zhen	Biomass energy
Prof. LIU Aizhong	Molecular genetics and plant breeding



Dr. Nicholas J. GOTELLI, with the University of Vermont, USA



Postdoctoral fellows

In 2008, XTBG offered 3 postdoctoral positions to researchers from China and overseas.

At present, there are 6 postdoctoral researchers work in the garden.

The 3 successful candidates and their supervisors are:

Name	Nationality	Research field	Supervisor
WANG Weibin	China	Ecology	FENG Yulong
Mani SHANMUGAM	India	Ecology	CAO Min
Matthew William WARREN	USA	Ecology	CHEN Jin

Preparation of the 50th Anniversary

The day of January 1, 2009 marks the 50th Year Anniversary of XTBG. A series of events are planned for the grand celebration and gathering. Special activities include:

- 🌳 Organize sport games participated by all members;
- 🌳 Release of a documentary DVD: XTBG-A Blossoming *Tropical Botanical Garden*;
- 🌳 Publish a series of historic album and books in memorial of the growing XTBG;
- 🌳 A performance and firework show in the evening of December 31, 2008;
- 🌳 Host an official ceremony to celebrate the 50th anniversary on January 1, 2009;
- 🌳 Convene the 2nd Xishuangbanna International Symposium on "Biodiversity Conservation: Research Imperatives for Scientific Institutions" during January 1-2, 2009;
- 🌳 Conduct an International Consultation with noted experts from all parts of the world on January 3, 2009;
- 🌳 Convene the 5th International Symposium on the family Zingiberaceae during July 6-9, 2009.



A historic album "XTBG-50 Years' Growth and Future Perspectives"

VISITS

CAS Vice President LI Jiayang inspects XTBG

Academician LI Jiayang, CAS vice president in charge of biological research, made an inspection tour to XTBG during November 1-2, accompanied by officials from CAS Bureau of International Cooperation, Bureau of Life Sciences & Biotechnology, and Kunming Branch. Prof. CHEN Jin, director of XTBG, made a report entitled “Strategic thoughts on development of XTBG”, covering the analysis on status quo, thoughts on future development, advances in assistance in building up Cambodian National Botanical Garden and proposal for key laboratory at CAS level. Afterwards, Academician LI Jiayang held talks with executives and principal scientists on such issues as team building, development, research subjects, biodiversity conservation, and international cooperation. The vice president paid sincere tribute to XTBG staff for their hard work and contributions in such a remote area, and fully recognized its rapid development over past years. In his speech, he encouraged XTBG to make good use of internal conditions and advantages to build a world class botanical



Academician LI Jiayang (left 1), CAS vice president, paying an on-site inspection to Prof. Charles Cannon's (right 1) Ecological Evolution lab

garden. He urged scientists here to focus more on studies of tropical plant diversity, development of strategic plant resources, and plant species conservation, etc. He pointed out that XTBG should make itself oriented to national needs and frontier in sciences. Academician LI also visited laboratories, experimental base of *Jatropha curcas*, and new research center under construction.



Academician LI Jiayang (right 4), CAS vice president, paying an on-site inspection



Other Visitors

January 2, Prof. RAO Yi, dean, School of Life Sciences, Peking University

January 16, General LIANG Guanglie, member of the Central Military Commission

January 19-23, Prof. Dr. Khoon Meng WONG and Mr. LOW YW, Rimba Ilmu Botanic Garden, University of Malaya, Malaysia

January 26-27, Prof. KANG Le, director general, CAS Bureau of Life Sciences & Biotechnology

February 4, Dr. John CONRAN, University of Adelaide, Australia

February 21, Ms. GOU Ping, general manager, Yunnan Shenyu New Energy Company

February 27-28, Mr. LIANG Gongqin, former vice president, Standing Committee of the People's Congress of Yunnan Province

March 7-9, Mr. QIU Huasheng, deputy director, CAS Bureau of International Cooperation

March 9, Academician ZHANG Yaping, director, Kunming Institute of Zoology, CAS

March 21-23, Ms. GAO Yuanyuan, deputy director-general, Department of Foreign Aid, Ministry of Commerce (MOC), and Mr. QIU Juliang, deputy director-general, CAS Bureau of International Cooperation

March 24, Prof. Georg MIEHE and a 14-people group, University of Marburg and Yunnan University

April 4, Mr. SUN Dianyi, deputy director, Bureau of Academy-Locality Cooperation, CAS, and Mr. ZHANG Chao, head, Department of Western China Cooperation, Bureau of Academy-Locality Cooperation, CAS

April 7, Three PhD candidates, University of Hohenheim, Germany

April 11, Prof. ZHOU Yao, Tonghua Normal University

April 18, an investigating group, Counselor Office of the State Council

April 21, Prof. YAN Yixun, former vice president of CAS

April 22-24, Prof. Peter GRUBB, University of Cambridge and a 15-person delegation from The University of British Columbia

April 25-26, a 5-person delegation, Xiamen Overseas Chinese Subtropical Plant Introduction Garden

April 28 - May 2, Prof. Dr. S. Joseph WRIGHT and Dr. Helene MULLER-LANDAU, Smithsonian Tropical Research Institute

May 7-12, Dr. Nicholas J. GOTELLI, University of Vermont Burlington, USA

May 9, Prof. Dr. Gary HARTSHORN, president and CEO, World Forestry Center

May 9, Dr. PHAM Van Quy, vice president of VAST, with a 8-person delegation from Vietnamese Academy of Science and Technology (VAST)

May 10, Mr. LI Zhiyong, vice minister, CPC Central Organization Department

May 12, a delegation from China Internet Network Information Center

March 12-14, Ms. ZHANG Jinfeng, Senior Engineer and Dr. RUAN Zhiping, Xiamen Botanical Garden

May 14, Prof. WANG Lei, head of TEDA School of Biological Sciences and Biotechnology, and a 4-person delegation, Nankai University

May 14, Mr. SUN Tan, deputy director, National Science Library, CAS, and Mr. CHU Jinli, head, Information Service Department, National Science Library, CAS

May 15, Mr. LI Yaoshen, director, Department of Museum and Social heritage, State Administration of Cultural Heritage

March 20-22, HUANG Yaping, Hong Kong Bird Watching Society

May 21-23, Ms. ZHANG Liping, director, The Conservancy Association, Hong Kong

May 22, Prof. YU Jun, deputy director, Beijing Institute of Genomics, CAS

May 25 - June 1, Mr. LI Zhisen, president,

Xishuangbanna Photographers Association and a 4-person delegation

May 27, Mr. LIU Zhenwei, deputy director, Laiwu branch, Shandong Academy of Agricultural Sciences, and Mr. REN Qingsheng, director, Taishan ginger institute, Shandong.

May 27, Mr. CHEN Qizhong, vice governor of Xishuangbanna Dai Autonomous Prefecture

May 30, Mr. DAO Ruqiang, vice governor of Mengla County, Xishuangbanna Dai Autonomous Prefecture, and a 5-person delegation

June 14, CHEN Lin, director, Guangzhou Institutes of Biomedicine and Health, CAS, and a 12-person delegation

June 18, Mr. ZHANG Guobao, vice minister, National Development and Reform Commission (NDRC) and director general of National Energy Bureau

July 5, a 10-person delegation from Kunming Branch, CAS

July 5, Mr. TANG Bin, party secretary and vice president, Yunnan Association of Science and Technology

July 14-17, Dr. Luis C. MEJIA, Rutgers University, USA, Dr. XU Jianping, McMaster University, Canada and a 7-person study group

July 25, Ms. WU Lihui and Ms. MA Xiaoli, Department of Information Work, Bureau of General Affairs, CAS

August 2-3, Dr. GUO Huijun, deputy director, Forestry Department of Yunnan Province, and a 16-person delegation

August 6, Mr. WANG Zhigang, deputy director, Bureau of Capital Construction, CAS, Mr. ZHANG Zhuangxin, president, Kunming Branch of CAS, Mr. HE Kaiping, director's assistant, Kunming Branch of CAS, Mr. GAN Fanyuan, deputy director, Kunming Institute of Botany, CAS, Mr. QIAN Jinhui, deputy director, Kunming Institute of Zoology, CAS

August 7, Prof. Woo NORMAN, chairman of Department of Biology and a 17-person professors delegation, Chinese University of Hong Kong

August 19, Ms. DU Wei, president, Simao

Normal University, and a 8-person delegation

September 2, a 6-person delegation from Forestry Department of Xishuangbanna

September 2-4, Mr. XING Jijun, director, division of European, Bureau of International Cooperation, The Ministry of Science and Technology of the People's Republic of China

September 3, Prof. MA Keping, director, CAS Institute of Botany

September 22, a 6-person delegation from Shanghai Botanical Garden

October 3-5, Dr. Thomas DELIBERTO, national wildlife disease coordinator, Animal Plant Health Inspection Service of US Department of Agriculture (USDA), with 7 members delegation

October 8, Mr. LI Lei, party secretary and vice president, Kunming Branch of CAS, Ms. WANG Jun, director, Department of Human Resource

October 10-14, Prof. MUKAI Hitoshi and Dr. Naishen LIANG, Center for Global Environmental Research, National Institute for Environmental Studies, Japan

October 23-26, Dr. Thomas Sam ELIAS, director, United States National Arboretum (USNA)

October 29-31, Prof. Guillermo GOLDSTEIN, Miami University, USA

November 5-8, Mr. ZHANG Yi, vice president, Hefei Institutes of Physical Science, CAS, and a 16-person delegation

November 12-17, Dr. W. John KRESS, senior professor, National Museum of Natural History, Smithsonian Institution, USA

November 26 -December 1, a 6-person delegation from Supervision and Auditing Bureau, CAS, and Bureau of Personnel and Education, CAS

December 20, Mr. KUANG Xiansong, director, Ganzhou Forestry Science Institute, China

December 25, Prof. Carol BASKIN and Prof. Jerry BASKIN, University of Kentucky, USA

December 30-31, 24 invited foreign scientists arrived at XTBG to witness the 50th anniversary and attend forthcoming events hosted by XTBG



FINANCIAL REVIEW

Income and Expenditure (Million Yuan)

Categories	FY 2005	FY 2006	FY 2007	FY 2008
INCOME				
Government Grants	9.854	10.494	36.553	40.504
Infrastructure	36.000	4.000	0	0*
Admissions & Services	22.731	27.993	26.801	25.776
Grants for Research	18.466	20.201	18.250	26.637
Miscellaneous	0.408	0.696	0.582	0.417
Sum	87.462	63.384	82.186	93.334
EXPENDITURE				
Staff Costs	24.726	33.650	36.448	41.196
Maintenance	4.645	2.080	0.803	0.673
General and Admin. Expenses	3.752	6.647	4.029	1.687
Infrastructure	11.000	7.740	16.753	38.548
Equipment	4.692	4.396	10.014	16.041
Research & Horticulture	13.279	17.817	22.834	21.182
Miscellaneous	1.206	1.002	1.121	0.050
Sum	63.300	73.332	92.029	119.377

* Note: XTBG has borrowed bank loans of 70 million Yuan for the construction of the new research center, the financial account are not included in the budget.

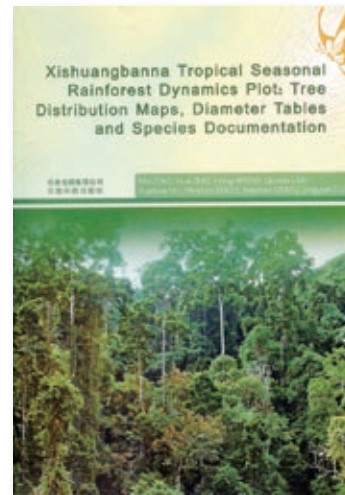
PUBLICATIONS

Books

CAO Min, ZHU Hua, WANG Hong, LAN Guoyu, HU Yuehua, ZHOU Shishun, DENG Xiaobao, CUI Jingyun. 2008. Xishuangbanna Tropical Seasonal Rainforest Dynamics Plot: Tree Distribution Maps, Diameter Tables and Species Documentation. Kunming. Yunnan Science and Technology Press.

WU Zhaolu. 2008. Management Achievement Evaluation of Xishuangbanna National Nature Reserve. Beijing. Science Press. (in Chinese)

XU Zaifu. 2008. Botanical Gardens: rescuing plants through ex situ conservation. Beijing. China Forestry Publishing House. (in Chinese)



Articles

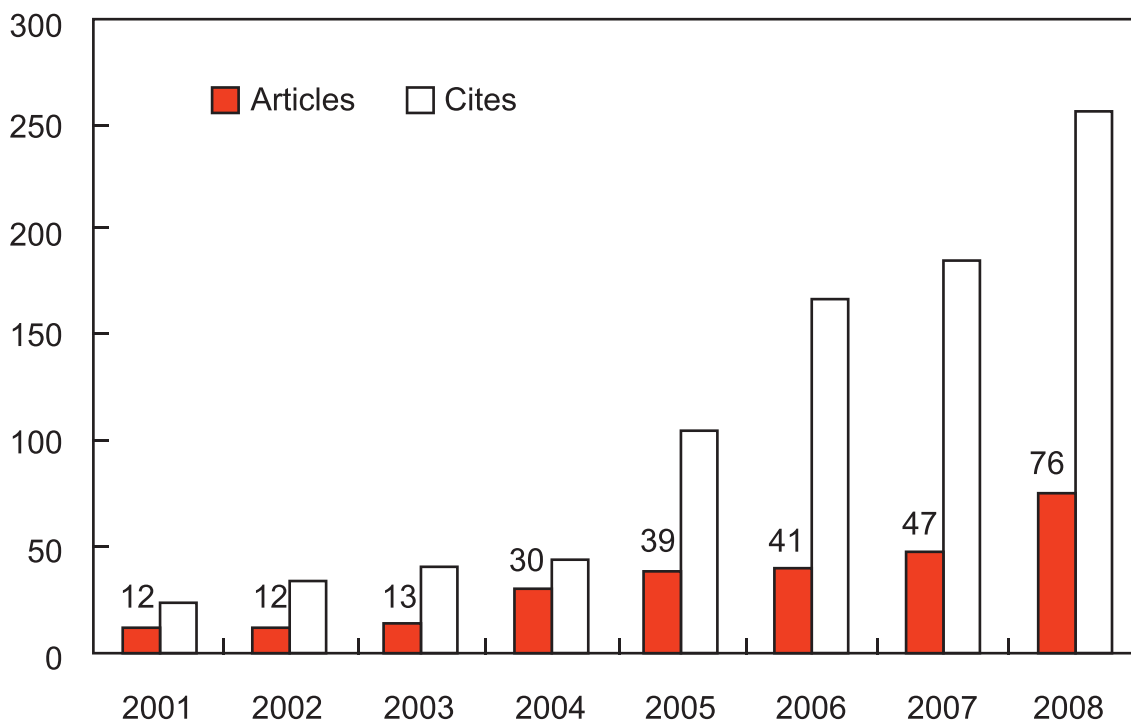


Figure 3 Articles published on the source journals of ISI Web of Science



1. Assaaoudi H, Fang Z, Butler IS and Kozinski JA. 2008. Synthesis of erbium hydroxide microflowers and nanostructures in subcritical water. NANOTECHNOLOGY 19:185606 (8pp).
2. Bai KD, Liao DB, Jiang DB, Cao KF. 2008. Photosynthetic induction in leaves of co-occurring *Fagus lucida* and *Castanopsis lamontii* saplings grown in contrasting light environments. TREES-STRUCTURE AND FUNCTION 22(4):449-462.
3. Bai LF, Yang DR, Compton SG. 2008. A gall midge inhabiting the figs of *Ficus benjamina* in Xishuangbanna, south-western China. SYMBIOSIS 45(1-3):149-152.
4. Cai M, Zhu H, Wang Hong. 2008. Pollen morphology of the genus *Lasianthus* (Rubiaceae) and related taxa from Asia. JOURNAL OF SYSTEMATICS AND EVOLUTION 46(1):62-72.
5. Cai ZQ, Poorter L, Han Q, Bongers F. 2008. Effects of light and nutrients on seedlings of tropical *Bauhinia* lianas and trees. TREE PHYSIOLOGY 28(8): 1277-1285.
6. Chan OC, Casper P, Sha LQ, Feng ZL, Fu Y, Yang XD, Ulrich A, Zou XM. 2008. Vegetation cover of forest, shrub and pasture strongly influences soil bacterial community structure as revealed by 16S rRNA gene T-RFLP analysis. FEMS MICROBIOLOGY ECOLOGY 64(3):449-458.
7. Chen C, Song QS. 2008. Responses of the Pollinating Wasp *Ceratosolen solmsi marchali* to Odor Variation between two floral stages of *Ficus hispida*. JOURNAL OF CHEMICAL ECOLOGY 34(12):1536-1544.
8. Chen H, Rygielwicz PT, Johnson MG, Harmon ME, Tian H, Tang JW. 2008. Chemistry and long-term decomposition of roots of Douglas-fir grown under elevated atmospheric carbon dioxide and warming conditions. JOURNAL OF ENVIRONMENTAL QUALITY 37 (4): 1327-1336.
9. Chen JW, Cao KF. 2008. Changes in activities of antioxidative system and monoterpene and photochemical efficiency during seasonal leaf senescence in *Hevea brasiliensis* trees. ACTA PHYSIOLOGIAE PLANTARUM 30(1):1-9.
10. Chen XS, Li QJ. 2008. Sexual Systems and Ecological Correlates in an Azonal Tropical Forests, SW China. BIOTROPICA 40(2):160-167.
11. Chen YJ, Bongers F, Cao KF, Cai ZQ. 2008. Above- and below-ground competition in high and low irradiance: tree seedling responses to a competing liana *Byttneria grandifolia*. JOURNAL OF TROPICAL ECOLOGY 24: 517-524.
12. Ci XQ, Chen JQ, Li QM, Li J. 2008. AFLP and ISSR analysis reveals high genetic variation and inter-population differentiation in fragmented populations of the endangered *Litsea szemaois* (Lauraceae) from Southwest China. PLANT SYSTEMIC EVOLUTION 273(3-4):237-246.
13. Cui LW, Huo S, Zhong T, Xiang ZF, Xiao W, Quan RC. 2008. Social organization of black-and-white snub-nosed monkeys (*Rhinopithecus bieti*) at Deqin, China. AMERICAN JOURNAL OF PRIMATOLOGY 70(2): 169-174.
14. Duan YA, Li QJ. 2008. The pollination biology of *Phrynium oliganthum* (Marantaceae). JOURNAL OF SYSTEMATICS AND EVOLUTION 46(4):545-553.
15. Elsheery NI, Cao KF. 2008. Gas exchange, chlorophyll fluorescence, and osmotic adjustment in two mango cultivars under drought stress. ACTA PHYSIOL PLANT 30(8):769-777.
16. Fan ZX, Bräuning A, Cao KF. 2008. Annual temperature reconstruction in the central

- Hengduan Mountains, China, as deduced from tree rings. *DENDROCHRONOLOGIA* 26(2):97-107.
17. Fan ZX, Bräuning A, Cao KF. 2008. Tree-ring based drought reconstruction in the central Hengduan Mountains region (China) since A. D. 1655. *INTERNATIONAL JOURNAL OF CLIMATOLOGY* 28(14): 1879–1887.
 18. Fang Z, Assaaoudi H, Sobhy A, Barsan MM, Butler IS, Guthrie RIL, Kozinski JA. 2008. Use of methanol and oxygen in promoting the destruction of deca-chlorobiphenyl in supercritical water. *FUEL* 87(3):353–358.
 19. Fang Z, Fang C. 2008. Complete dissolution and hydrolysis of wood in hot water. *AICHE JOURNAL* 54(10): 2751-2758.
 20. Fang Z, Minowa T, Fang C, Smith RL, Inomata H, Kozinski JA. 2008. Catalytic hydrothermal gasification of cellulose and glucose. *INTERNATIONAL JOURNAL OF HYDROGEN ENERGY* 33(3): 981-990.
 21. Fang Z, Sato T, Smith RL, Inomata H, Arai K, Kozinski JA. 2008. Reaction chemistry and phase behavior of lignin in high-temperature and supercritical water. *BIORESOURCE TECHNOLOGY* 99(9): 3424-3430.
 22. Feng YL, Fu GL, Zheng YL. 2008. Specific leaf area relates to the differences in leaf construction cost, photosynthesis, nitrogen allocation, and use efficiencies between invasive and noninvasive alien congeners. *PLANTA* 228(3): 383-390.
 23. Feng YL, Fu GL. 2008. Nitrogen allocation, partitioning and use efficiency in three invasive plant species in comparison with their native congeners. *BIOLOGICAL INVASIONS* 10(6):891-902.
 24. Feng YL. 2008. Nitrogen allocation and partitioning in invasive and native *Eupatorium* species. *PHYSIOLOGIA PLANTARUM* 132(3):350-358.
 25. Feng YL. 2008. Photosynthesis, nitrogen allocation and specific leaf area in invasive *Eupatorium adenophorum* and native *Eupatorium japonicum* grown at different irradiances. *PHYSIOLOGIA PLANTARUM* 133(2):318-326.
 26. Fu TT, Wang X, Cheng HY. 2008. Effects of light, temperature and dehydration on germination of *Ficus benjamina* L. var. *nuda* seeds. *SEED SCIENCE AND TECHNOLOGY* 36:601-608.
 27. Hakkinen M, Hong W, Ge XJ. 2008. *Musa itinerans* (Musaceae) and its intraspecific taxa in China. *NOVON* 18(1): 50-60.
 28. Häkkinen M, Väre H. 2008. A taxonomic revision of *Musa aurantiaca* (Musaceae) in Southeast Asia. *JOURNAL OF SYSTEMATICS AND EVOLUTION* 46(1):89-92.
 29. Häkkinen M, Väre H. 2008. Taxonomic history and identity of *Musa dasycarpa*, *M. velutina* and *M. assamica* (Musaceae) in Southeast Asia. *JOURNAL OF SYSTEMATICS AND EVOLUTION* 46(2):230-235.
 30. Hakkinen M, Wang H. 2008. *Musa zaifui* sp nov (Musaceae) from Yunnan, China. *NORDIC JOURNAL OF BOTANY* 26(1-2): 42-46.
 31. Hakkinen M. 2008. Taxonomic identity of *Musa nagensium* (Musaceae) in Southeast Asia. *NOVON* 18(3): 336-339.
 32. Hao GY, Hoffmann WA, Scholz FG, Bucci SJ, Meinzer FC, Franco AC, Cao KF, Goldstein G. 2008. Stem and leaf hydraulics of congeneric tree species from adjacent tropical savanna and forest ecosystems. *OECOLOGIA* 155(3):405-415.
 33. Harrison RD, Ronsted N2, Peng YQ. 2008. Foreword - Fig and fig wasp biology: A perspective from the East. *SYMBIOSIS* 45(1-3): 1-8.



34. Hu HB, Liu WJ, Cao M. 2008. Impact of land use and land cover changes on ecosystem services in Menglun, Xishuangbanna, Southwest China. ENVIRONMENTAL MONITORING AND ASSESSMENT 146(1-3):147-156.
35. Jie L, Xia NH, Li XW. 2008. *Sinopora*, a new genus of Lauraceae from South China. NOVON 18(2):199-201.
36. Kan J, Song SQ. 2008. Effects of dehydration, chilling, light, phytohormones and nitric oxide on germination of *Pistia stratiotes* seeds. SEED SCIENCE AND TECHNOLOGY 36(1):38-45.
37. Lei YB. 2008. Physiological responses of *Populus przewalskii* to oxidative burst caused by drought stress. RUSSIAN JOURNAL OF PLANT PHYSIOLOGY 55(6): 857-864.
38. Li HM, Ma YX, Aide TM, Liu WJ. 2008. Past, present and future land-use in Xishuangbanna, China and the implications for carbon dynamics. FOREST ECOLOGY AND MANAGEMENT 255(1): 16-24.
39. Li J, Conran JG, Christophel DC, Li ZM, Li L, Li HW. 2008. Phylogenetic relationships of the litsea complex and core Laureae (Lauraceae) using ITS and ETS sequences and morphology. ANNALS OF THE MISSOURI BOTANICAL GARDEN 95(4):580-599.
40. Li JJ, Tan K, He SY. 2008. Hornet predation risk: apperception and response by honey bees. JOURNAL OF APICULTURAL RESEARCH 47(2): 174-175.
41. Lin H, Cao M. 2008. Plant energy storage strategy and caloric value. ECOLOGICAL MODELLING 217(1-2):132-138.
42. Liu WJ, Liu WY, Li JT. 2008. Isotope variations of throughfall, stemflow and soil water in a tropical rain forest and a rubber plantation in Xishuangbanna, SW China. HYDROLOGY RESEARCH 39(5-6):437-449.
43. Liu WJ, Wang PY, Liu WY, Li JT, Li PJ. 2008. The importance of radiation fog in the tropical seasonal rain forest of Xishuangbanna, southwest China. HYDROLOGY RESEARCH 39(1):79-87.
44. Mei YQ, Song SQ. 2008. Cross-tolerance is associated with temperature and salinity stress during germination of barley seeds. SEED SCIENCE AND TECHNOLOGY 36(3):689-698.
45. Niu KC, Luo YJ, Choler P, Du GZ. 2008. The role of biomass allocation strategy in diversity loss due to fertilization. BASIC AND APPLIED ECOLOGY 9(5): 485-493.
46. Peng YQ, Duan ZB, Yang DR, Rasplus JY. 2008. Co-occurrence of two *Eupristina* species on *Ficus altissima* in Xishuangbanna, SW China. SYMBIOSIS 45(1-3):9-14.
47. Proffit M, Schatz B, Bessiere JM, Chen C, Soler C, Hossaert-McKey M. 2008. Signalling receptivity: Comparison of the emission of volatile compounds by figs of *Ficus hispida* before, during and after the phase of receptivity to pollinators. SYMBIOSIS 45(1-3): 15-24.
48. Ridenour WM, Vivanco JM, Feng YL, Horiuchi J, Callaway RM. 2008. No evidence for trade-offs: *Centaurea* plants from America are better competitors and defenders. ECOLOGICAL MONOGRAPHS 78(3): 369-386.
49. Sanchez MGB, Chen C, Li JJ, Liu FL, Gauthier M, Giurfa M. 2008. Behavioral studies on tarsal gustation in honeybees: sucrose responsiveness and sucrose-mediated olfactory conditioning. JOURNAL OF COMPARATIVE PHYSIOLOGY A: NEUROETHOLOGY SENSORY Neural, and Behavioral Physiology 194(10):861-869.
50. Slik JWF, Bernard CS, Beek MV, Breman

- FC, Eichhorn KAO. 2008. Tree diversity, composition, forest structure and aboveground biomass dynamics after single and repeated fire in a Bornean rain forest. *OECOLOGIA* 158(3):579-588.
51. Slik JWF, Bernard CS, Breman FC, Van Beek M, Salim A, Sheil D. 2008. Wood Density as a Conservation Tool: Quantification of Disturbance and Identification of Conservation-Priority Areas in Tropical Forests. *CONSERVATION BIOLOGY* 22(5): 1299-1308.
52. Tan K, Hepburn HR, Radloff SE, Fuchs S, Fan X, Zhang LJ, Yang MX. 2008. Multivariate morphometric analysis of the *Apis cerana* of China. *APIDOLOGIE* 39(3): 343-353.
53. Tan K, Yang MX, Radloff SE, Hepburn HR, Zhang ZY, Luo LJ, Li H. 2008. Dancing to different tunes: heterospecific deciphering of the honeybee waggle dance. *NATURWISSENSCHAFTEN* 95(12):1165-1168.
54. Tan K, Fuchs S, Engel MS. 2008. An adventitious distal abscissa in the forewing of honey bees (Hymenoptera: Apidae: *Apis*). *APIDOLOGIE* 39(6):674-682.
55. Tang AJ, Tian MH, Long CL. 2008. Desiccation tolerance and storability of *Mangifera persiciformis* Wu et Ming seeds, a narrowly distributed and endemic species in China. *SEED SCIENCE AND TECHNOLOGY* 36(2): 486-490.
56. Tang ZH, Cao M, Sheng LX, Ma XF, Walsh A, Zhang SY. 2008. Seed dispersal of *Morus macroura* (Moraceae) by two frugivorous bats in Xishuangbanna, SW China. *BIOTROPICA* 40(1): 127-131.
57. Tian LW, Bi Y, Ho SC, Liu WJ, Liang S, Goggins W, Chan EYY, Zhou SS, Sung JJY. 2008. One-year delayed effect of fog on malaria transmission: a time-series analysis in the rain forest area of Mengla County, southwest China. *MALARIA JOURNAL* 7:110.
58. Tian X, Song S, Lei YB. 2008. Cell death and reactive oxygen species metabolism during accelerated ageing of soybean axes. *RUSSIAN JOURNAL OF PLANT PHYSIOLOGY* 55(1): 33-40.
59. Wall DH, Bradford MA, John MGS, Trofymow JA, Behan-Pelletier V, Bignell DDE 7, Dangerfield JM, Parton WJ, Rusek J, Voigt W, Wolters V, Gardel HZ, Ayuke FO, Bashford R, Beljakova OI, Bohlen PJ, Brauman A, Flemming S, Henschel JR, Johnson DL, Jones TH, Kovarova M, Kranabetter JM (, Kutny L, Lin KC, Maryati M, Masse D, Pokarzhevskii A, Rahman H, Sabara MG, Salamon JA, Swift MJ, Varela A, Vasconcelos HL, White D, Zou XM. 2008. Global decomposition experiment shows soil animal impacts on decomposition are climate-dependent. *GLOBAL CHANGE BIOLOGY* 14(11):2661-2677.
60. Wang B, Chen J. 2008. Tannin concentration enhances seed caching by scatter-hoarding rodents: An experiment using artificial 'seeds'. *ACTA OECOLOGICA-INTERNATIONAL JOURNAL OF ECOLOGY* 34:379-385.
61. Xiang W, Song QS, Zhang HJ, Guo SP. 2008. Antimicrobial anthraquinones from *Morinda angustifolia*. *FITOTERAPIA* 79(7-8):501-504.
62. Xia YM, Gao XM, Li QJ. 2008. Identification and expression of floral organ homeotic genes from *Alpinia oblongifolia* (Zingiberaceae). *JOURNAL OF INTERGRATIVE PLANT BIOLOGY* 51(2): 155-166.
63. Yan YP, Sha LQ, Cao M, Zheng Z, Tang JW, Wang YH, Zhang YP, Wang R, Liu GR, Wang YS, Sun Y. 2008. Fluxes of CH₄ and N₂O from soil under a tropical seasonal rain forest in Xishuangbanna, Southwest China. *JOURNAL OF ENVIRONMENTAL SCIENCES-CHINA* 20(2):207-215.



64. Yang DR, Peng YQ, Yang P, Guan JM. 2008. The community structure of insects associated with figs at Xishuangbanna, China. SYMBIOSIS 45(1-3):153-157.
65. Yang LP, Liu WY, Ma WZ. 2008. Woody debris stocks in different secondary and primary forests in the subtropical Ailao Mountains, southwest China. ECOLOGICAL RESEARCH 23(5) : 805-812.
66. Yu Y, Baskin JM, Baskin CC, Tang Y, Cao M. 2008. Ecology of seed germination of eight non-pioneer tree species from a tropical seasonal rain forest in southwest China. PLANT ECOLOGY 197(1): 1-16.
67. Zhai SW, Yang DR, Peng YQ. 2008. Reproductive strategies of two philotrypsis species on *Ficus hispida*. SYMBIOSIS 45(1-3):117-120.
68. Zhang FP, Peng YQ, Guan JM, Yang DR. 2008. A species of fig tree and three unrelated fig wasp pollinators. EVOLUTIONARY ECOLOGY RESEARCH 10(4):611-620.
69. Zhang L, Li QJ. 2008. *Tacca amplioplacenta* (Taccaceae), a new species from Yunnan, China. ANNALES BOTANICI FENNICI 45(4): 311-314.
70. Zhang ZQ, Li QJ. 2008. Autonomous selfing provides reproductive assurance in an alpine ginger *Roscoea schneideriana* (Zingiberaceae). ANNALS OF BOTANY 102(4): 531-538.
71. Zhao XB, Zhang LH, Liu DH. 2008. Comparative study on chemical pretreatment methods for improving enzymatic digestibility of crofton weed stem. BIORESOURCE TECHNOLOGY 99(9): 3729-3736.
72. Zhou YB, Slade E, Newman C, Wang XM, Zhang SY. 2008. Frugivory and seed dispersal by the yellow-throated marten, *Martes flavigula*, in a subtropical forest of China. JOURNAL OF TROPICAL ECOLOGY 24:219-223.
73. Zhou YB, Zhang JS, Slade E, Zhang LB, Palomares F, Chen J, Wang XM, Zhang SY. 2008. Dietary shifts in relation to fruit availability among masked palm civets (*Paguma larvata*) in central China. JOURNAL OF MAMMALOGY 89(2):435-447.
74. Zhou YB, Zhang L, Kaneko Y, Newman C, Wang XM. 2008. Frugivory and seed dispersal by a small carnivore, the Chinese ferret-badger, *Melogale moschata*, in a fragmented subtropical forest of central China. FOREST ECOLOGY AND MANAGEMENT 255(5-6): 1595-1603.
75. Zhu H. 2008. Species composition and diversity of Lianas in tropical forests of southern Yunnan (Xishuangbanna) , southwestern China. JOURNAL OF TROPICAL FOREST SCIENCE 20(2):111-122.
76. Zhu H. 2008. The tropical flora of southern Yunnan, China, and its biogeographical affinities. ANNALS OF THE MISSOURI BOTANICAL GARDEN 95(4): 661-680.





Opening ceremony of the Luosuo river bridge & western entrance



Evening Party in commemoration of the 50th founding anniversary of XTBG



XISHUANGBANNA TROPICAL BOTANICAL GARDEN, CHINESE ACADEMY OF SCIENCES

Headquarter: Menglun, Mengla, Yunnan
666303, P. R. China

Tel: + 86 691 8715460

Fax: + 86 691 8715070

Kunming Division: 88 Xuefu Road, Kunming
Yunnan 650223, P. R. China

Tel: + 86 871 5171169

Fax: + 86 871 5160916

www.xtbg.ac.cn

Captions for cover photos

1. A typical low wood density pioneer species, indicating disturbed vegetation. 2. *Heliconia* collection in the Tropical Brilliant Flowers Garden. 3. The big dry fruit of *Entada phaseoloides* attracts many visitors. 4. The Luosuo river bridge & western entrance. 5. One of the subplot marking stakes in the 20-ha tropical rainforest dynamics plot. 6. Evening Party in commemoration of the 50th founding anniversary of XTBG. 7. Fruits of *Plukenetia volubilis* Linneo.