

# **CASELOAD HISTORY**



**TABLE OF CONTENTS**

	<u>Page</u>
DWSS Caseload History Narrative .....	1 - 3
Timeline of Important Events Since PRWORA Unveiled .....	4 - 6
DWSS Aid Code Descriptions.....	7 - 8
Change Over Time, FY1991 - FY2010 .....	9 - 12
Medicaid Eligibles, FY1993 - FY2010.....	13 - 16
Welfare Eligibles, Tables 1, 2 and 3.....	17 - 19
Historical Caseload and Expenditures Spreadsheet.....	20

Graphs

TANF.....	21
SNAP .....	22
Total Medicaid.....	23

Caseload History:  
Annual Summaries

TANF/AFDC.....	24 - 26
CHAP.....	27 - 28
Aged .....	29 - 30
Blind.....	31 - 32
Disabled.....	33 - 34
MAABD.....	35 - 36
HCBW.....	37
QMB.....	38 - 39
SLMB.....	40
HIWA .....	41
County Match.....	42 - 43
Child Welfare .....	44 - 45
SNAP .....	46 - 47

Graphs: FY 1999 - FY 2010

Total TANF Basic Grant Recipients .....	48
TANF Related Medical.....	49
CHAP Recipients .....	50
Aged Eligibles .....	51
Disabled/Blind Eligibles.....	52
Medicare Beneficiaries Eligibles .....	53
County Match Eligibles .....	54
Child Welfare Eligibles .....	55
Total Medicaid Eligibles .....	56
SNAP Participating Persons .....	57

## CASELOAD HISTORY

The Research & Statistics Section of the Budget and Statistics Unit is responsible for the Nevada Division of Welfare and Support Services (DWSS) caseload information. Current information may be accessed via the DWSS website at [www.dwss.nv.gov](http://www.dwss.nv.gov).

### Caseload History

The following pages show several graphs and summary spreadsheets all of which use DWSS historical caseload information in different permutations to explain the characteristics of the state's welfare assistance caseload.

### Caseload Growth

After experiencing double-digit increases yearly through the late 1980s and the early 1990s, Nevada's Aid to Families with Dependent Children (AFDC) caseload peaked in March 1995 at 42,703 recipients, one year after the nation's peak in March 1994.

On January 1, 1997, Nevada implemented the Temporary Assistance for Needy Families (TANF) Program. This program institutes a federal 60-month lifetime time limit on receipt of benefits, increases work participation requirements, and increases mandatory sanctions for failure to participate in work requirements and failure to cooperate with the Child Support Enforcement Program. Additionally, state Welfare reform measures passed during the 1995 legislative session were implemented February 1, 1997. These include a stricter time limitation and sanction penalties.

TANF recipients decreased steadily from the middle 1990s through fiscal year 2000. Caseload decreases during this time can best be understood within the context of Nevada's welfare reform initiatives. The first two initiatives were the New Employees of Nevada (NEON) program begun in July of 1995 and the Applicant Job Search (AJS) program begun in January 1996. These two initiatives mirror national welfare reform in their emphasis on self-sufficiency through employment. Nevada, and most of the nation, enjoyed a healthy economy during this time, which attributed to the continued decline of caseloads nationwide.

Fiscal year 2001 marked the first time in several years that the TANF recipient caseload experienced growth, increasing approximately 9 percent from the prior fiscal year due to a decline in the previously robust economy and Nevada's continued population growth. The tragic events of September 11, 2001 exacerbated this growth trend, contributing to a 59 percent increase in the TANF caseload from fiscal year 2001 to 2002 and an additional 8 percent growth in fiscal year 2003.

Caseload decreases were seen once again in fiscal years 2004, 2005, 2006 and 2007 primarily due to improved conditions in Nevada's economy as well as Welfare staffs' ongoing efforts toward stressing work-first and aggressively transitioning individuals to self-sufficiency. Fiscal Year 2008 had an increase in caseloads due to the effects of the recession that started in December 2007. Since Fiscal Year 2008 all caseloads have

continued to grow at rates not seen in recorded history and have set peak records in Fiscal Year 2010 in all categories with the exception of TANF Cash.

The number of Supplemental Nutrition Assistance Program (SNAP) participating persons exhibited continued growth patterns, increasing approximately 31 percent from fiscal year 2009 to fiscal year 2010. The growth in SNAP recipients during this time is attributed to the growing population in Nevada, combined with a continual unemployment rate climb to 14.2% (June 2010) along with the current sharp decline of Nevada's economy, a nation leading home foreclosure rate and the continued deep recession. Over time, the conversion to the Electronic Benefit Transfer system, in which SNAP is handled via swipe cards similar to ATM cards, eliminated the stigma some recipients may have felt when using the actual coupons, thus encouraging additional enrollment.

A new historical peak of 322,950 participating persons was reached in November 2010 with growth expected to continue in the next fiscal year

The number of Medicaid eligibles increased in both fiscal years 2009 and 2010, growing 9.5 percent in fiscal year 2009, and 18 percent in fiscal year 2010. As with SNAP, growth in the number of Medicaid eligibles continued to grow at a substantial rate.

### **Some Notes on Spreadsheets in the Following Pages**

#### **"Timeline of Important Events Since PRWORA Unveiled"**

The "Timeline of Important Events" spreadsheet highlights major events affecting DWSS caseload populations since September 1994.

#### **"DWSS Aid Code Descriptions"**

The "Aid Code" spreadsheet provides a list of all types of program eligibility at DWSS, along with the corresponding aid code used in the NOMADS computer system.

#### **"Change Over Time"**

The summary spreadsheet "Change Over Time" gives annual average monthly totals and the percent change from year-to-year for DWSS TANF, Medicaid and Food Stamps.

#### **"Medicaid Eligibles"**

The "Medicaid Eligibles" spreadsheet shows the annual average monthly total for current eligibles and retro eligibles for each program for fiscal years 1993 - 2010. Retro eligibles are derived from the system one year after the fiscal year ends. The third page of the spreadsheet provides the monthly detail for fiscal year 2010.

**"Welfare Eligibles"**

"Welfare Eligibles, Tables 1, 2 and 3" are not the official DWSS caseload information but are presented here for estimation purposes only. The information is a snapshot in time as of June 30, 2010. Each table is shown within the context of the official county population estimates by the Nevada State Demographer for March 2010. These tables can be used to establish comparative relationships or to examine a specific county or counties.

Table 1 shows the estimated percent each county has of the statewide caseload per program. Significantly, Clark County, which has about 72 percent of the state's population, accounts for proportionately more than its share of the following programs: TANF, Total Medicaid, and SNAP. Washoe County, which accounts for 15 percent of the population, has proportionately more than its share in Blind, QMB, SLMB, County Match and Child Welfare.

Table 2 puts each county's caseload within the context of its population. For example, 11 percent of Clark County's population receives SNAP and almost 10 percent are Medicaid eligible.

Table 3 shows each county's caseload within the context of total statewide population. For example, almost 10 percent of Nevada's population is Medicaid Eligible, with 7 percent in Clark County, and another 1.4 percent in Washoe County.

TIMELINE OF IMPORTANT EVENTS SINCE PRNORA UNVEILED (AS OF 30 JUNE 2010)

YEAR	DATE	EVENT
1994	SEP 94	U.S. CONGRESSIONAL PERSONAL RESPONSIBILITY ACT UNVEILED.
1995	MAR 95 JUL 95	AID TO FAMILIES WITH DEPENDENT CHILDREN (AFDC) RECIPIENT HISTORIC HIGH MONTH (42,703). NEW EMPLOYEES OF NEVADA (NEON) STARTS.
1996	JAN 96 AUG 96	APPLICANT JOB SEARCH (AJS) STARTS. U.S. CONGRESSIONAL PERSONAL RESPONSIBILITY ACT SIGNED INTO LAW.
1997	JAN 97 FEB 97 FEB 97	TEMPORARY ASSISTANCE FOR NEEDY FAMILIES (TANF) STARTS - 60 MONTHS FOR FEDERAL TIME LIMITS. EARNED INCOME DISREGARDS BEGINS. F/S ABANDS MUST MEET WORK PARTICIPATION REQUIREMENT.
1998	JAN 98	NV TANF TIME LIMITS START (24 ON, 12 OFF, 24 ON, 12 OFF, 12 ON).
1999	SEP 99 NOV 99 NOV 99	FOOD STAMPS AUTHORIZED CASES LOW MONTH (29,042). FOOD STAMPS PARTICIPATING CASES LOW MONTH (27,469). FOOD STAMPS RECIPIENTS LOW MONTH (58,869).
2000	JAN 00 JAN 00 MAR 00	FIRST 12 MONTH SITOUT BEGINS FOR NV TANF CASH GRANT RECIPIENTS. INCREASED PAYMENTS FOR NON-NEEDY CARETAKERS STARTS. TANF HISTORIC RECIPIENT LOW MONTH (15,487).
2001	JAN 01 JAN 01 JUL 01 11 SEP 01 01 OCT 01 OCT 01 OCT 01 OCT 01 DEC 01	NV TANF CASH GRANT RECIPIENTS CAN RETURN FROM FIRST SITOUT. SECOND INCREASED PAYMENTS FOR NON-NEEDY CARETAKERS STARTS. CHILD ONLY FAMILY PRESERVATION PLAN (FPF) AID CODE "COF" STARTS. TERRORIST ATTACK ON NEW YORK CITY, WASHINGTON DC & PENNSYLVANIA. UNEMPLOYMENT INSURANCE BENEFITS (UIB) FOR ANY INDIVIDUAL LAID OFF AFTER SEPTEMBER 11, 2001 ARE EXEMPT WHEN DETERMINING TANF, TANF-RELATED MED AND CHAP ELIGIBILITY. LAST PHASE-IN OF COVERAGE OF CHAP CHILDREN. CHILD ONLY KINSHIP PROGRAM AID CODE "COK" STARTS. 2 PARENT AID CODE "UP" CATEGORY TRANSFERRED TO STATE MOE. FS EBT PHASE-IN STARTS. NSWD CENTRAL OFFICE MOVED TO 1470 COLLEGE PARKWAY, CARSON CITY.
2002	JAN 02 JUN 02 JUL 02 1 SEP 02 DEC 02	FIRST TIME THAT NON-NV RESIDENTS COULD HAVE MET THE 60 MONTH FEDERAL LIMIT ON TANF (DEPENDING ON OTHER STATE IMPOSED LIMITS). FS EBT PHASE-IN COMPLETED. MEDICAL CARE FOR CERVICAL/BREAST CANCER AID CODE "MCB" STARTS. OCT 2001 EXEMPTION POLICY FOR UNEMPLOYMENT INSURANCE BENEFITS (UIB) FOR DETERMINING TANF, TANF-RELATED MED AND CHAP ELIGIBILITY ENDS. AID CODE "QJ" ENDS.
2003	JAN 03 JAN 03 19 MAR 03 01 APR 03 APR 03 01 OCT 03 01 OCT 03 01 DEC 03 14 DEC 03	FIRST TIME THAT NV RESIDENTS COULD HAVE MET THE 60 MONTH FEDERAL LIMIT ON TANF IF THEY HAD BEEN ON TANF IN JANUARY 1997 (START OF FEDERAL TIME LIMITS). SECOND SITOUT BEGINS FOR NV TANF CASH GRANT RECIPIENTS. LAUNCH OF SECOND IRAQ WAR. THE 2002 FOOD STAMPS FARM BILL RESTORES BENEFITS TO LEGAL IMMIGRANTS WHO LIVED IN THE U.S. AS A QUALIFIED ALIEN FOR 5 YEARS FROM THE DATE OF ENTRY. NEVADA'S FOOD STAMP ISSUANCE CYCLE CHANGED FROM A FISCAL MONTH TO A CALENDAR MONTH. THE 2002 FOOD STAMPS FARM BILL RESTORES BENEFITS TO LEGAL IMMIGRANT CHILDREN UNDER 18 YEARS OF AGE WHO LAWFULLY RESIDE IN THE U.S. REGARDLESS OF THE DATE THEY ENTERED THE COUNTRY. DIVISION OF HEALTH CARE FINANCING & POLICY MMIS SYSTEM ONLINE. FLAMINGO DISTRICT OFFICE OPENS (LAS VEGAS, CLARK COUNTY). NEW SANCTION POLICY STARTS (AFFECTS JANUARY 2004 BENEFITS).
2004	JAN 04 01 JUL 04 01 JUL 04 01 JUL 04 01 OCT 04	NV TANF CASH GRANT RECIPIENTS CAN RETURN FROM SECOND SITOUT. INCREASED PAYMENTS FOR KINSHIP CASES AID CODE "COK". ELIMINATION OF CHAP ASSETS TEST. HEALTH INSURANCE WORK ADVANCEMENT PROGRAM (HIWA) AID CODE "HY9" STARTS. NEW SSP-MOE PROGRAM STARTS (ADDITIONAL AID CODES "AP" & "AI", SELECTED GROUPS).
2005	JAN 05 MAR 05 JUN 05 01 JUL 05 01 JUL 05 29 AUG 05 SEP 05 12 SEP 05 OCT 05 01 OCT 05 14 DEC 05 31 DEC 05	FIRST TIME THAT THE 60 MONTH FEDERAL LIMIT ON TANF WILL AFFECT THOSE NV RECIPIENTS THAT HAVE BEEN ON TANF SINCE JAN 98 (EXCEPT HARDSHIP CASES). POLICY CHANGE ALLOWS INELIGIBLE NON-CITIZENS TO RETAIN AN OPEN MEDICAID CARD FOR EMERGENCY MEDICAL SERVICES ONLY. AFFECTS TANF EM4 AND MARBD EM1, EM3 & EM9 AID CODES. AID CODE "NO9" (PL 105-33) ENDS. FAMILY PRESERVATION PROGRAM (FPF) AID CODE "COF" TRANSFERRED TO MRDS. AGED OUT OF FOSTER CARE AID CODE "AO" STARTS. HURRICANE KATRINA (STRONG CATEGORY 3) HITS NEW ORLEANS AND SURROUNDING AREAS. NSWD NAME CHANGED TO DIVISION OF WELFARE AND SUPPORTIVE SERVICES (DWSS). NEW TANF (BOTH CASH & MED ONLY) AID CODE "HK" FOR HURRICANE KATRINA EVACUEES STARTS (1ST DAY BENEFITS ISSUED). HOME & COMMUNITY BASED WAIVER (DISABLED-GROUP CARE) AID CODE "HG9" CLOSED. ADDITIONAL SSP-MOE CODES ("G" & "H") STARTS. CHARLESTON DISTRICT OFFICE MOVED TO NEW LOCATION. NEW NAME IS NELLIS DISTRICT OFFICE. TANF CASH BENEFITS FOR HURRICANE KATRINA EVACUEES ENDS.

TIMELINE OF IMPORTANT EVENTS SINCE PERIOD UNVEILED (AS OF 30 JUNE 2010)

YEAR	DATE	EVENT	
2006	JAN 06	HOME & COMMUNITY BASED WAIVER (AGED-DWIP) AID CODE "HD1" STARTS.	
	JAN 06	LOWEST UNEMPLOYMENT RATE (3.6%) FOR NV (SEASONALLY ADJUSTED).	
	JAN 06	DEFICIT REDUCTION ACT PASSED.	
	MAR 06	ADDITIONAL SSP-MOE CODE ("I") STARTS.	
	31 MAR 06	TANF MED ONLY BENEFITS FOR HURRICANE KATRINA EVACUEES ENDS.	
	01 APR 06	LABOR SURPLUS AREAS IN NV ARE ELIMINATED (CHANGED BY DEPARTMENT OF LABOR). THIS AFFECTS FS ABAND INDIVIDUALS WHICH WILL NO LONGER BE EXEMPT FROM ABAND PROVISIONS. THERE IS NO CHANGE TO TRIBAL AREAS.	
	01 JUL 06	HOME & COMMUNITY BASED WAIVER (AGED-ASSISTED LIVING FACILITY (ALF)) AID CODE "AL1" STARTS (FOR CLARK COUNTY RESIDENTS ONLY).	
	01 JUL 06	2 VALID PROOF OF CITIZENSHIP DOCUMENTS FOR ASSISTANCE REQUIRED BASED ON DRA REGULATIONS.	
	01 OCT 06	CHANGES TO TANF DUE TO DEFICIT REDUCTION ACT OFFICIALLY IN EFFECT.	
	01 OCT 06	ALL SSP-MOE CODES EXCEPT "I" ENDS. AID CODE "UP" NO LONGER SSP-MOE.	
	01 DEC 06	NEW AID CODE "PS" STARTS. PREGNANT WOMEN WITH INCOME BETWEEN 133% AND 185% FEDERAL POVERTY LEVEL. PART OF HIWA. THIS IS NOT TITLE XIX MEDICAID. DO'S WILL PROCESS APPLICATIONS AS PART OF CHAP.	
	2007	JAN 07	TANF NEEDS STANDARD WAS SYNCED UP TO FEDERAL POVERTY LEVELS.
		JAN 07	DISREGARDS UPDATED: 100% 1ST 3 MONTHS; 85% NEXT 3 MONTHS; 75% NEXT 3 MONTHS; 65% FINAL 3 MONTHS.
MAY 07		SOUTHERN CHILD CARE DO OPENEO (CONTRACT EMPLOYEES ONLY).	
MAY 07		CACU OFFICE MOVED TO 1504 N. MAIN ST, LAS VEGAS.	
JUN 07		FS PILOT PROJECT "TRUSTED PARTNERS" STARTS. FOOD BANK OF NORTHERN NEVADA WILL WORK WITH HOUSEHOLDS IN NORTHERN AND RUAL NEVADA. "HELP" OF SOUTHERN NEVADA WILL WORK WITH HOUSEHOLDS IN CLARK COUNTY.	
30 JUN 07		1024 W. OWENS DO (I&R) CLOSED. ALL EMPLOYEES MOVED TO DESERT INN OFFICE.	
1 JUL 07		TANF CASH GRANTS INCREASED BY 10%. AFFECTS ALL CASH AID CODES (AF, AI, UP, COA & COS) WITH EXCEPTION OF NON-NEEDY (CON) AND KINSHIP CARE (COK).	
24 JUL 07		FEDERAL MINIMUM WAGE RAISED FROM \$5.15 TO \$5.85 PER HOUR (1ST INCREASE IN 10 YEARS).	
31 JUL 07		RECIPIENT COUNTS FOR AID CODES AF, AI, UP, COA & COS HAVE BEEN MODIFIED. DUE TO A LEGISLATIVELY APPROVED 10% INCREASE IN BENEFITS WHICH WAS EFFECTIVE 01 JULY 2007 (FY08), SYSTEM CONVERSION ISSUES OCCURRED IN WHICH EXTRA SUPPLEMENTAL PAYMENTS ARTIFICIALLY INFLATED THE CASELOAD COUNTS. A PERCENTAGE FACTOR WAS APPLIED TO ADJUST THE DATA.	
31 AUG 07		RECIPIENT COUNTS FOR AID CODES AF, AI, UP, COA & COS HAVE BEEN MODIFIED. DUE TO A LEGISLATIVELY APPROVED 10% INCREASE IN BENEFITS WHICH WAS EFFECTIVE 01 JULY 2007 (FY08), SYSTEM CONVERSION ISSUES OCCURRED IN WHICH EXTRA SUPPLEMENTAL PAYMENTS ARTIFICIALLY INFLATED THE CASELOAD COUNTS. A PERCENTAGE FACTOR WAS APPLIED TO ADJUST THE DATA.	
01 SEP 07		RENO BIBLE WAY DO (I&R) CLOSED. ALL STAFF MOVED TO NORTHERN EDC.	
15 SEP 07		CARSON CITY DO MOVED TO 2533 N CARSON ST, #200 AND 2527 N CARSON ST, #255 & 260, CARSON CITY. 2533 N CARSON WILL BE FIELD SERVICES. 2527 N CARSON WILL BE CHILD CARE AND ENERGY ASSISTANCE PROGRAM.	
01 OCT 07		NEW AID CODES SG, TL, TN, TN1, TN2 & TP USED STARTING WITH OCTOBER BENEFIT ISSUANCE. AID CODES AF, AI & UP WILL BE PHASED OUT NATURALLY. NO CHANGE TO CHILD ONLY AID CODES.	
01 OCT 07		PRE-CASH MEDICAID (PC) ENDS.	
01 OCT 07		TANF CASH PROGRAM DE-LINKED FROM MEDICAID IN NOWADS. CASH AID CODES WILL ALSO HAVE TANF MED AID CODE.	
01 OCT 07		ELKO DISTRICT OFFICE MOVED TO 1020 RUBY VISTA DR #101, ELKO.	
01 OCT 07		GROSS UNEARNED INCOME LIMIT FOR THE HIWA PROGRAM (WY9) HAS BEEN REMOVED.	
01 OCT 07		UNDER HARDSHIP FOR MEETING AGE REQUIREMENTS FOR KINSHIP CARE (COK) INSTITUTED. CHILD/CHILDREN MUST HAVE "SPECIAL NEEDS" OR ARE A "HARD TO PLACE" SIBLING GROUP AND APPLICANT MUST DEMONSTRATE AN EXTREME FINANCIAL HARDSHIP.	
15 OCT 07		GOVERNOR CALLS FOR HIRING FREEZE FOR MOST STATE POSITIONS.	
DEC 07		START OF RECESSION.	
26 DEC 07		PUBLIC LAW 110-161 OF THE CONSOLIDATED APPROPRIATIONS ACT OF 2008 GRANTS IRAQI AND AFGHAN NON-CITIZENS SPECIAL IMMIGRANT STATUS UNDER SECTION 101(A)(27) OF THE IMMIGRATION AND NATIONALITY ACT (INA). INDIVIDUALS AND FAMILY MEMBERS GRANTED THIS SPECIAL IMMIGRATION STATUS ARE ELIGIBLE FOR RESETTLEMENT ASSISTANCE, ENTITLEMENT PROGRAMS AND OTHER BENEFITS THE SAME AS REFUGEES ADMITTED UNDER SECTION 207 OF THE INA, EXCEPT THE PERIOD OF ELIGIBILITY CANNOT EXCEED 6 MONTHS (8 MONTHS FOR IRAQ IMMIGRANTS). THESE PROVISIONS EXPIRE ON 30 SEPTEMBER 2008 (30 NOVEMBER 2008 FOR IRAQ IMMIGRANTS) UNLESS EXTENDED BY FEDERAL LAW.	
2008		JAN 08	WINNEMUCCA DO MOVED TO 3140 TRADERS WAY, WINNEMUCCA.
	17 JAN 08	EXPANDED ELIGIBILITY FOR PREGNANT WOMEN (AID CODE PS) TERMINATED. RECIPIENTS CURRENTLY ELIGIBLE WILL REMAIN SO UNTIL 2 MONTHS AFTER BIRTH.	
	04 FEB 08	GROSS UNEARNED INCOME LIMIT FOR THE HIWA PROGRAM (WY9) HAS BEEN REINSTATED AT \$699.00.	
	25 FEB 08	EXPANDED ELIGIBILITY FOR PREGNANT WOMEN (AID CODE PS) REINSTATED WITH A 200 CASE/RECIPIENT CAP.	
	APR 08	REQUIREMENT TO PROVIDE PROOF OF SERVICE REINSTATED AS AN ELIGIBILITY REQUIREMENT FOR EMERGENCY MEDICAL ASSISTANCE PROGRAMS (AFFECTS AID CODES EM1, EM3, EM4 & EM9).	
	26 JUN 08	CONGRESS INCLUDED EMERGENCY UNEMPLOYMENT COMPENSATION IN THE FISCAL YEAR 2008 SUPPLEMENTAL SPENDING BILL (P.L. 110-252). THE BILL EXTENDED UNEMPLOYMENT INSURANCE (UI) BENEFITS FOR UP TO 13 WEEKS, THROUGH THE END OF MARCH 31, 2009. THE UEC BENEFITS PASSED IN THE BILL WERE 100% FEDERALLY FUNDED.	
	24 JUL 08	FEDERAL MINIMUM WAGE RAISED FROM \$5.85 TO \$6.55 PER HOUR.	
	30 SEP 08	TANF-TEMP (TP) PROGRAM DISCONTINUED AS ORIGINALLY IMPLEMENTED. TEMP PROGRAM WILL STILL BE AVAILABLE FOR FAMILIES EXPERIENCING AN EPISODE OF NEED AS A RESULT OF UNFORESEEN CIRCUMSTANCES. THIS WOULD INCLUDE NATURAL DISASTERS SUCH AS FLOODS, EARTHQUAKES, ETC.	
	01 OCT 08	HOUSEHOLDS TERMINATED FOR FAILING TO COMPLY WITH AN ESTABLISHED PERSONAL RESPONSIBILITY PLAN (PRP) WILL BE INELIGIBLE FOR TANF CASH AND TANF RELATED MEDICAID (TRM) FOR 3 MONTHS.	
	01 OCT 08	THE FOOD, CONSERVATION AND ENERGY ACT OF 2008 (FCEA) RENAMED THE FOOD STAMPS PROGRAM TO "SUPPLEMENTAL NUTRITION ASSISTANCE PROGRAM (SNAP)".	
21 NOV 08	CONGRESS PASSED THE UNEMPLOYMENT COMPENSATION EXTENSION ACT OF 2008 (P.L. 110-449). PROVIDED AN ADDITIONAL SEVEN WEEKS OF EXTENDED UNEMPLOYMENT COMPENSATION FOR LAID-OFF WORKERS IN ALL STATES. UEC BENEFITS WERE FINANCED 100% BY THE FEDERAL GOVERNMENT.		

TIMELINE OF IMPORTANT EVENTS SINCE FERRISA UNVEILED (AS OF 30 JUNE 2010)

YEAR	DATE	EVENT	
2009	17 FEB 09	AMERICAN RECOVERY AND REINVESTMENT ACT OF 2009 (ARRA) SIGNED INTO LAW.	
	17 FEB 09	CONGRESS PASSED ANOTHER EXTENSION OF THE 2009 EUC THROUGH ARRA. EUC BENEFITS ARE FINANCED 100% BY THE FEDERAL GOVERNMENT.	
	FEB 09	TANF NEON AND TANF RELATED MEDICAID HOUSEHOLD MEMBERS MAY BE ELIGIBLE FOR TRANSITIONAL MEDICAID (TR) FOR 12 MONTHS FOLLOWING THE LAST MONTH OF TANF NEON OR TANF RELATED MEDICAID ELIGIBILITY.	
	16 MAR 09	ALL SNAP APPLICANT HOUSEHOLDS ARE CATEGORICALLY ELIGIBLE FOR BENEFITS WITH EXCEPTION OF PENDING TANF OR SSI APPLICANTS AND DENIED OR TERMINATED TANF OR SSI RECIPIENTS.	
	01 APR 09	ARRA INCREASED THE MAXIMUM BENEFIT LEVEL OF ALL SNAP HOUSEHOLDS BY 13.6%.	
	01 APR 09	ARRA CHANGED THE ABAND POLICY LIMITING THE RECEIPT OF 3 MONTHS OF SNAP BENEFITS IN A 36-MONTH PERIOD NO LONGER IN EFFECT.	
	01 APR 09	IN LIEU OF FACE-TO-FACE INTERVIEWS, CASEWORKERS MAY NOW CONDUCT INTERVIEWS, AT BOTH INITIAL APPLICATION AND RECERTIFICATION, BY TELEPHONE FOR ALL SNAP HOUSEHOLDS.	
	01 APR 09	TANF HOUSEHOLDS WHO ARE TERMINATED FOR NON-COMPLIANCE WITH THEIR ERP WILL NO LONGER LOSE MEDICAID ELIGIBILITY FOR ANY HOUSEHOLD MEMBERS. THE 3 MONTH SIT-OUT PERIOD WILL NO LONGER BE IMPOSED AGAINST THE MEDICAID CASE FOR ANY SANCTIONS IMPOSED.	
	01 APR 09	H.R.2, CHILDREN'S HEALTH INSURANCE PROGRAM REAUTHORIZATION ACT - OBRA POLICY WILL REMOVE THE REQUIREMENT FOR A CHILD TO CONTINUE TO LIVE IN THE SAME HOUSEHOLD AS THE MOTHER AND FOR THE MOTHER TO BE ELIGIBLE FOR MEDICAID IF STILL PREGNANT. ADDITIONALLY, A CHILD BORN TO A WOMAN WHO IS ELIGIBLE FOR MEDICAID ON THE DATE OF THE CHILD'S BIRTH IS DEEMED TO HAVE APPLIED AND BEEN FOUND ELIGIBLE FOR MEDICAID EFFECTIVE THE BIRTH MONTH AND REMAINS ELIGIBLE FOR ONE YEAR. CHANGES IN INCOME, HOUSEHOLD COMPOSITION, COOPERATION WITH OTHER PROGRAM REQUIREMENTS, INCLUDING REDETERMINATION AND CITIZENSHIP, WILL NOT AFFECT THE CHILD'S ELIGIBILITY.	
	01 JUN 09	NEVADA CHILD CARE SYSTEM (NCCS) IMPLEMENTED.	
	01 JUL 09	PROGRAM NAME CHANGED FOR NON-NEEDY CARETAKER TO "RELATIVE CAREGIVER".	
	01 JUL 09	NEVADA'S MINIMUM WAGE INCREASES \$.70. MINIMUM WAGE WITH QUALIFIED HEALTH BENEFITS INCREASES TO \$6.55 PER HOUR. EMPLOYEES WITH NO HEALTH BENEFITS WILL EARN \$7.55 PER HOUR.	
	24 JUL 09	FEDERAL MINIMUM WAGE RATE INCREASED FROM \$6.55 TO \$7.25 PER HOUR.	
	SEP 09	NV'S UNEMPLOYMENT RATE AT ALL TIME HIGH OF 13.31.	
	06 NOV 09	THE PRESIDENT SIGNED THE WORKER, HOMEOWNERSHIP, AND BUSINESS ASSISTANCE ACT OF 2009 (THE WORKER ASSISTANCE ACT (P.L. 111-92)). THIS LAW EXPANDS THE 2009 EMERGENCY UNEMPLOYMENT COMPENSATION (EUC) PROGRAM. REFER TO FFIS ISSUE BRIEF 09-46 DATED NOVEMBER 24, 2009 FOR FULL DETAILS.	
	NOV 09	SECTION 8 OF THE WORKER ASSISTANCE ACT REQUIRES THE SUPPLEMENTAL NUTRITION ASSISTANCE PROGRAM (SNAP) TO EXCLUDE THE \$25 WEEKLY INCREASE IN UID BENEFITS APPROVED WITH ARRA EFFECTIVE NOVEMBER 2009.	
	2010	01 JAN 10	EFFECTIVE JANUARY 1, 2010 STATES ARE PROHIBITED FROM RECOVERING MEDICAID EXPENDITURES FOR MEDICARE PREMIUMS AND COST SHARING PAID UNDER MEDICARE BENEFICIARY PROGRAMS FROM THE ESTATES OF DECEASED MEDICAID RECIPIENTS. REF: MEDICARE IMPROVEMENT FOR PATIENTS AND PROVIDERS ACT OF 2008 (MIPPA).
		01 JAN 10	EFFECTIVE JANUARY 1, 2010 THE SOCIAL SECURITY ADMINISTRATION WILL BEGIN TRANSMITTING INFORMATION ON LOW INCOME SUBSIDY (LIS) APPLICATIONS TO STATE MEDICAID AGENCIES. AGENCIES MUST TREAT THE DATA SSA TRANSMITS AS THE START OF A MEDICARE BENEFICIARY APPLICATION. SMIH AND QI ELIGIBILITY MAY BE RETROACTIVE TO THE APPLICATION EFFECTIVE DATE. REF: MEDICARE IMPROVEMENT FOR PATIENTS AND PROVIDERS ACT OF 2008 (MIPPA).
		01 MAR 10	EFFECTIVE MARCH 1, 2010 AN ELIGIBILITY REDETERMINATION WILL NO LONGER BE REQUIRED FOR TANF CASH PROGRAMS AND ALL MEDICAID PROGRAMS, INCLUDING ALL MAABD CATEGORIES. THE NEW POLICY WILL REQUIRE AN ANNUAL ELIGIBILITY REVIEW ONLY.
		01 MAR 10	PROGRAM NAME CHANGED FOR NON-QUALIFIED/NON-CITIZEN TO "CITIZEN CHILDREN HOUSEHOLD".
01 JUN 10		CHAP JOINT CUSTODY POLICY CHANGE - CHAP ELIGIBILITY WILL ONLY CONSIDER THE INCOME OF THE HOUSEHOLD MEMBERS WHO SUBMIT THE APPLICATION ON BEHALF OF THE CHILD(REN). THE SECOND PARENT'S INCOME AND HOUSEHOLD INFORMATION IS NO LONGER NEEDED TO DETERMINE ELIGIBILITY FOR CHAP.	
JUN 10		SNAP AUTHORIZED CASES NEW PEAK (XXX,XXX).	
JUN 10		SNAP PARTICIPATING CASES NEW PEAK (134,936).	
JUN 10		SNAP PARTICIPATING PERSONS NEW PEAK (290,842).	
JUN 10		SNAP DOLLAR VALUE NEW PEAK (\$35,364,786).	
JUN 10		NV'S UNEMPLOYMENT RATE AT 14.21.	
JUN 10		HISTORICAL HIGHEST UNEMPLOYMENT RATE OF 14.21.	



Nevada State Welfare Division Aid Code Descriptions as of 30 June 2010

AID CODE	DESCRIPTION
AD1	ADULT DISABLED AGED (PUBLIC LAW)
AD3	ADULT DISABLED BLIND (PUBLIC LAW)
AD5	ADULT DISABLED OBRA BABY
AD9	ADULT DISABLED (PUBLIC LAW)
AF	TANF CASH 1 PARENT FAMILY (ENDED SEP 07)
AF5	TANF CASH 1 PARENT FAMILY OBRA BABY (MED ONLY) (ENDED SEP 07)
AI	TANF CASH 1 OR 2 PARENT INCAPACITY (ENDED SEP 07)
AI5	TANF CASH 1 OR 2 PARENT INCAPACITY OBRA BABY (MED ONLY) (ENDED SEP 07)
AL1	HOME & COMMUNITY BASED WAIVER AGED (ALF). (ASSISTED LIVING FACILITY). CLARK COUNTY ONLY. (STARTED JUL 06)
AM	TANF RELATED MEDICAID
AM5	TANF RELATED MEDICAID OBRA BABY
AO	AGED OUT OF FOSTER CARE MEDICAL ONLY (STARTED JUL 05)
AO5	AGED OUT OF FOSTER CARE MEDICAL ONLY OBRA BABY (STARTED JUL 05)
CA5	TANF CASH CHILD ONLY NON-QUAL NON-CITIZEN OBRA BABY (MED ONLY) (ENDED SEP 07)
CH	CHAP
CH5	CHAP OBRA BABY
CK5	TANF CASH CHILD ONLY KINSHIP OBRA BABY (MED ONLY) (ENDED SEP 07)
CM1	COUNTY MATCH AGED
CM3	COUNTY MATCH BLIND
CM5	COUNTY MATCH OBRA BABY
CM9	COUNTY MATCH DISABLED
CN5	TANF CASH CHILD ONLY NON-NEEDY CARETAKER OBRA BABY (MED ONLY) (ENDED SEP 07)
COA	TANF CASH CHILD ONLY CITIZEN CHILDREN HOUSEHOLDS (NAME CHANGED FROM NON-QUAL NON-CITIZEN MARCH 2010)
COF	TANF CASH CHILD ONLY FAMILY PRESERVATION PLAN. (STARTED JUL 01 & TRANSFERRED TO MHDS EFFECTIVE 01 JUL 2005)
COK	TANF CASH CHILD ONLY KINSHIP (STARTED OCT 01)
CON	TANF CASH CHILD ONLY RELATIVE CAREGIVER (NON-NEEDY CARETAKER PRIOR TO FY10)
COS	TANF CASH CHILD ONLY SSI
CS5	TANF CASH CHILD ONLY SSI OBRA BABY (MED ONLY) (ENDED SEP 07)
EM1	EMERGENCY MEDICAL AGED (NON-QUAL NON-CITIZEN)
EM3	EMERGENCY MEDICAL BLIND (NON-QUAL NON-CITIZEN)
EM4	EMERGENCY MED TANF (NON-QUAL NON-CITIZEN)
EM5	EMERGENCY MED OBRA BABY
EM9	EMERGENCY MEDICAL DISABLED (NON-QUAL NON-CITIZEN)
GC1	GROUP CARE AGED
GC3	GROUP CARE BLIND
GC9	GROUP CARE DISABLED
HC1	HOME & COMMUNITY BASED WAIVER AGED (CHIP)
HD1	HOME & COMMUNITY BASED WAIVER AGED (DWIP) (STARTED JAN 06)
HD3	HOME & COMMUNITY BASED WAIVER BLIND (DWIP)
HD5	HOME & COMMUNITY BASED WAIVER OBRA BABY
HD9	HOME & COMMUNITY BASED WAIVER DISABLED (DWIP)
HG1	HOME & COMM BASED WAIVER AGED (GROUP CARE)
HG3	HOME & COMM BASED WAIVER BLIND (GROUP CARE)
HG5	HOME & COMM BASED WAIVER OBRA BABY
HG9	HOME & COMMUNITY BASED WAIVER DISABLED (GROUP CARE) (ENDED OCT 2005)
HK	TANF CASH & TANF MED HURRICANE KATRINA (SEP 05 - 31 DEC 05 TANF CASH; SEP 05 - 31 MAR 06 TANF MED)
HK5	TANF CASH HURRICANE KATRINA OBRA BABY (SEP 05 - AUG 06)
HR1	HOME & COMM BASED WAIVER AGED (RETARDED)
HR3	HOME & COMMUNITY BASED WAIVER BLIND (RETARDED)
HR5	HOME & COMMUNITY BASED WAIVER OBRA BABY
HR9	HOME & COMMUNITY BASED WAIVER DISABLED (RETARDED)
IN1	INDEPENDENT LIVING AGED (SSI)
IN3	INDEPENDENT LIVING BLIND (SSI)
IN5	INDEPENDENT LIVING OBRA BABY
IN9	INDEPENDENT LIVING DISABLED (SSI)
KB3	KATIE BECKETT BLIND
KB9	KATIE BECKETT DISABLED
MC8	CERVICAL/BREAST CANCER (STARTED JUL 02)
NO9	SSI NOT - DISABLED (ENDED JUN 05)
PC	PRE-CASH MEDICAID (ENDED SEP 07)
PC5	PRE-CASH MEDICAID OBRA BABY (ENDED SEP 07)
PK1	PICKLE AGED (PUBLIC LAW)
PK3	PICKLE BLIND (PUBLIC LAW)
PK5	PICKLE OBRA BABY
PK9	PICKLE DISABLED (PUBLIC LAW)
PM	POST MEDICAL (EXCESS CHILD SUPPORT)
PM5	POST MEDICAL (EXCESS CHILD SUPPORT) OBRA BABY
PR1	PRE-MED AGED
PR3	PRE-MED BLIND
PR9	PRE-MED DISABLED
PS	PREGNANT WOMEN WITH INCOME BETWEEN 133% AND 185% OF POVERTY LEVEL (HIFA - NOT TITLE XIX). (STARTED DEC 06)
QD3	QUALIFIED DISABLED WORKING INDIVIDUAL BLIND
QD9	QUALIFIED DISABLED WORKING INDIVIDUAL DISABLED

QI1	SLMB QUALIFIED INDIVIDUAL 1 AGED
QI3	SLMB QUALIFIED INDIVIDUAL 1 BLIND
QI9	SLMB QUALIFIED INDIVIDUAL 1 DISABLED
QJ1	SLMB QUALIFIED INDIVIDUAL 2 AGED (ENDED DEC 2002)
QJ3	SLMB QUALIFIED INDIVIDUAL 2 BLIND (ENDED DEC 2002)
QJ9	SLMB QUALIFIED INDIVIDUAL 2 DISABLED (ENDED DEC 2002)
QM1	QUALIFIED MEDICARE BENEFICIARY AGED
QM3	QUALIFIED MEDICARE BENEFICIARY BLIND
QM5	QUALIFIED MEDICARE BENEFICIARY OBRA BABY
QM9	QUALIFIED MEDICARE BENEFICIARY DISABLED
SG	TANF CASH SELF SUFFICIENCY GRANT PROGRAM (STARTED OCT 07)
SI1	SPECIAL INCOME LEVEL AGED
SI3	SPECIAL INCOME LEVEL BLIND
SI5	SPECIAL INCOME LEVEL OBRA BABY
SI9	SPECIAL INCOME LEVEL DISABLED
SL1	SPECIAL LOW-INCOME MEDICARE BENEFICIARY AGED
SL3	SPECIAL LOW-INCOME MEDICARE BENEFICIARY BLIND
SL9	SPECIAL LOW-INCOME MEDICARE BENEFICIARY DISABLED
SN	SNEEDE VS. KIZER
SN5	SNEEDE VS. KIZER OBRA BABY
SS1	SSI AGED (INSTITUTIONAL)
SS3	SSI BLIND (INSTITUTIONAL)
SS9	SSI DISABLED (INSTITUTIONAL)
SU1	SUSPENDED SSI AGED (PUBLIC LAW)
SU3	SUSPENDED SSI BLIND (PUBLIC LAW)
SU5	SUSPENDED SSI OBRA BABY
SU9	SUSPENDED SSI DISABLED (PUBLIC LAW)
TL	TANF CASH LOAN PROGRAM (STARTED OCT 07)
TN	TANF CASH 1 PARENT FAMILY (STARTED OCT 07)
TN1	TANF CASH 1 OR 2 PARENT INCAPACITY (STARTED OCT 07)
TN2	TANF CASH 2 PARENT FAMILY (STARTED OCT 07)
TP	TANF CASH TEMPORARY PROGRAM (STARTED OCT 07). ENDED 30 SEP 08 AS ORIGINALLY IMPLEMENTED. REMAINS VALID AID CODE.
TR	TRANSITIONAL MEDICAL
TR5	TRANSITIONAL MEDICAL OBRA BABY
UP	TANF CASH 2 PARENT FAMILY (ENDED SEP 07)
UP5	TANF CASH 2 PARENT FAMILY OBRA BABY (ENDED SEP 07)
WB1	WOULD BE ELIGIBLE SSI IF NOT IN LONG TERM CARE AGED
WB3	WOULD BE ELIGIBLE SSI IF NOT IN LONG TERM CARE BLIND
WB9	WOULD BE ELIGIBLE SSI IF NOT IN LONG TERM CARE DISABLED
WS1	WIDOW/WIDOWER/SURVIVING DIVORCED SPOUSE AGED (PUBLIC LAW)
WS3	WIDOW/WIDOWER/SURVIVING DIVORCED SPOUSE BLIND (PUBLIC LAW)
WS9	WIDOW/WIDOWER/SURVIVING DIVORCED SPOUSE DISABLED (PUBLIC LAW)
WW1	WIDOW/WIDOWER AGED (PUBLIC LAW)
WW3	WIDOW/WIDOWER BLIND (PUBLIC LAW)
WW9	WIDOW/WIDOWER DISABLED (PUBLIC LAW)
WY9	HEALTH INSURANCE WORK ADVANCEMENT PROGRAM (HIWA) (STARTED JUL 04)

CHANGE OVER TIME, PERCENT CHANGE YEAR OVER YEAR

	1991-92	1992-93	1993-94	1994-95	1995-96	1996-97	1997-98					
	%chg	FY92	%chg	FY94	%chg	FY96	%chg					
TANF Single Parent	21.9%	30,239	8.9%	32,945	8.3%	35,670	9.2%	38,939	-2.4%	38,010	-20.8%	30,114
Grants	46.3%	3,080	5.7%	3,257	15.0%	3,747	16.4%	4,362	24.7%	5,440	-4.3%	5,206
Related Med	23.8%	33,319	8.7%	36,202	8.9%	39,417	9.9%	43,301	0.3%	43,450	-18.7%	35,330
Total	105.3%	1,047	34.7%	1,410	18.7%	1,673	-3.3%	1,634	-25.9%	1,210	-37.0%	762
TANF Two Parent	158.3%	328	143.3%	798	95.7%	1,562	55.6%	2,430	21.7%	2,958	5.7%	3,126
Grants	153.7%	1,375	60.6%	2,208	46.5%	3,235	25.6%	4,064	2.6%	4,168	-6.7%	3,882
Med	24.4%	31,286	9.8%	34,355	8.7%	37,343	8.6%	40,573	-1.3%	39,220	-21.3%	30,876
Total	60.3%	3,408	19.0%	4,055	30.9%	5,309	27.5%	6,792	23.6%	8,398	-0.8%	8,532
TOTAL TANF	27.2%	34,694	10.7%	38,410	11.0%	42,652	11.0%	47,365	0.5%	47,618	-17.7%	39,208
CHAP	110.0%	8,243	50.6%	12,416	21.0%	15,019	20.3%	18,071	15.9%	20,946	13.2%	23,716
AGED	3.2%	6,196	6.6%	6,604	7.4%	7,092	6.7%	7,567	4.9%	7,937	1.2%	8,031
BLIND	-0.3%	375	-0.5%	373	2.1%	381	2.1%	389	-0.3%	386	0.3%	388
DISABLED	20.2%	8,229	17.4%	9,658	15.7%	11,177	16.1%	12,982	12.4%	14,591	3.6%	15,120
OMB	24.6%	1,991	15.9%	2,308	14.7%	2,648	21.8%	3,226	16.0%	3,742	11.4%	4,169
SLMB	44.2%	610	24.8%	761	21.7%	926	14.1%	1,067	-4.7%	1,007	9.0%	1,098
COUNTY MATCH	29.9%	60,338	16.9%	70,530	13.5%	80,072	13.7%	91,076	6.7%	97,176	-4.3%	93,008
TOTAL TANF & MAABD	11.8%	142	-25.4%	106	N/A	93	N/A	N/A	N/A	N/A	N/A	N/A
REFUGEE	6.6%	1,931	8.1%	2,087	4.2%	2,174	25.2%	2,722	4.4%	2,842	2.0%	2,899
CHILD WELFARE	29.0%	62,411	16.1%	72,073	13.2%	82,339	13.8%	93,788	6.6%	100,018	-4.1%	95,807
TOTAL MEDICAID	29.0%	75,995	19.3%	90,078	6.4%	96,470	1.7%	98,123	-0.4%	97,698	-11.1%	86,814
FOOD STAMPS	19.5%	27,113	16.1%	31,483	3.8%	32,671	0.7%	32,905	-26.7%	24,112	-9.5%	21,811
CSE AFDC CASES*	48.4%	\$314,184	11.7%	\$574,173	1.8%	\$584,515	2.5%	\$599,346	17.6%	\$704,927	-3.5%	\$680,378

\*CSE projections not completed due to reconciliation of Legacy and NOMADS.  
 Notes: 1. Rates from MFP Report VL00717A 1 year after the FY cash.  
 2. Child Welfare in Title XIX only.

CHANGE OVER TIME: PERCENT CHANGE YEAR OVER YEAR

	1997-98	1998-99	FY99	1999-2000	FY00	2000-2001	FY01
	%chg	%chg		%chg		%chg	
<b>TANF Single Parent</b>							
Grants	-11.7%	-21.2%	20,964	-24.5%	15,200	6.6%	16,867
Retired Med	6.8%	57.1%	8,733				
Total	-9.0%	-7.6%	29,697				
<b>TANF Two Parent</b>							
Grants	64.5%	-25.3%	936	-11.2%	831	51.1%	1,256
Med	7.5%	21.2%	4,072				
Total	18.6%	8.6%	5,008				
<b>TOTAL TANF</b>							
Grants	-9.8%	-21.4%	21,900	-23.9%	16,661	8.8%	18,123
Med	7.0%	43.0%	12,805	46.9%	18,510	70.9%	32,140
Total	-5.2%	-5.6%	34,705	2.3%	35,171	41.7%	50,263
<b>CHAP</b>	5.2%	9.1%	27,213	-7.0%	25,304	0.8%	25,501
<b>AGED</b>	1.3%	2.0%	8,297	3.1%	8,558	0.3%	8,598
<b>BLIND</b>	1.3%	2.5%	403	-18.1%	330	10.9%	366
<b>DISABLED</b>	3.9%	6.8%	15,703	5.6%	17,707	9.3%	19,352
<b>QMB</b>	4.3%	6.6%	4,347	6.9%	4,930	5.3%	5,214
<b>SLMB</b>	20.9%	28.7%	1,445	17.0%	2,326	37.9%	3,208
<b>COUNTY MATCH</b>	-2.4%	6.8%	1,145	4.6%	1,198	9.5%	1,309
<b>TOTAL TANF &amp; MATCH</b>	-0.1%	2.4%	92,902	0.7%	95,844	18.7%	113,811
<b>REFUGEE</b>	N/A	N/A	N/A	N/A	N/A	N/A	N/A
<b>CHILD WELFARE</b>	16.1%	3.0%	3,466	2.9%	3,587	7.4%	3,832
<b>TOTAL MEDICAID</b>	0.4%	2.4%	98,267	0.8%	99,411	18.3%	117,643
<b>FOOD STAMPS</b>	-14.9%	-14.0%	73,876	-3.2%	61,490	13.9%	70,016
<b>CSE AFDC CASES*</b>	-8.4%	-6.4%	19,989	N/A	N/A	N/A	N/A
<b>CSE AFDC COLL*</b>	-7.9%	-5.3%	\$526,655	N/A	N/A	N/A	N/A
			\$593,702				

\*CSE projections not completed due to reclassification of Legacy and HMO/MS

Notes:  
 1. Rates from MFP Report W/L 07/77A 1 year after the FY ends.  
 2. Child Welfare is Title XIX only.

NOTE: Beginning with FY00, TANF-Ret Med is only shown in total TANF section. There will no longer be a split between 2\* and 1\* for TANF-Ret/Ret Med.

	CHANGE OVER TIME: PERCENT CHANGE YEAR OVER YEAR											
	2001-2002	2002-2003	2003-2004	2004-2005	2005-2006	2006-2007	2007	2008	2009	2010	2011	2012
	%chg	%chg	%chg	%chg	%chg	%chg						
TANF Single Parent Grants	19654	-0.8%	19,501	-23.0%	15,010	-17.1%	12,442	10,818	-13.0%	9,408		
TANF Two Parent Intact Grants	390	-11.9%	329	-34.7%	215	2.8%	221	194	-20.9%	154		
TANF Two Parent Grants	3211	8.6%	3,489	32.9%	2,340	-18.3%	1,912	1,642	-14.1%	1,438		
TANF MNCT Grants	3869	10.6%	4,279	-17.0%	3,551	-9.7%	3,208	3,077	-6.9%	2,864		
TANF Kinship Grants	55	418.9%	285	-1.6%	281	9.0%	306	387	18.6%	439		
TANF Non-Qualified Non-Citizen Grants	1018	62.7%	1,657	9.1%	1,808	4.8%	1,886	2,006	-6.2%	1,882		
TANF SSI Household Grants	526	162.4%	1,381	18.7%	1,639	0.8%	1,651	1,587	-3.8%	1,508		
TANF FFP Grants	112	0.4%	112	-0.2%	112	-0.1%	112	566	***	-100.0%		
TANF Hurricane Katrina Grants (0/05-12/05)												
<b>TOTAL TANF GRANTS</b>	<b>28809</b>	<b>7.7%</b>	<b>31,034</b>	<b>-19.6%</b>	<b>24,956</b>	<b>-12.9%</b>	<b>21,747</b>	<b>19,880</b>	<b>***</b>	<b>-10.9%</b>	<b>17,712</b>	
TANF Related Med	45290	29.6%	38,692	15.7%	67,929	4.1%	70,687	67,673	-4.3%	63,008		
<b>TOTAL TANF</b>	<b>74099</b>	<b>21.1%</b>	<b>89,726</b>	<b>3.5%</b>	<b>92,885</b>	<b>-0.5%</b>	<b>92,434</b>	<b>87,555</b>	<b>-5.3%</b>	<b>80,721</b>		
CHAP	23672	6.8%	35,275	5.4%	26,650	0.4%	26,752	28,035	4.8%	28,674		
AGED	8919	4.2%	9,291	5.7%	9,822	3.1%	10,125	10,445	3.2%	10,813		
BLIND	374	-11.5%	331	6.0%	351	0.6%	353	361	2.3%	376		
DISABLED	21048	6.4%	22,399	8.7%	24,354	1.6%	24,748	24,922	0.7%	25,468		
QMB	5566	15.6%	6,437	19.8%	7,710	-3.9%	7,410	6,893	-7.0%	7,088		
SLMB	3795	18.7%	4,505	10.4%	4,973	6.0%	5,273	5,630	6.8%	6,171		
HLWA	N/A	N/A	N/A	N/A	N/A	N/A	10	23	130.0%	21		
COUNTY MATCH	1340	2.5%	1,373	1.7%	1,396	0.9%	1,409	1,483	5.3%	1,468		
<b>TOTAL TANF &amp; MAABD</b>	<b>138813</b>	<b>14.8%</b>	<b>159,337</b>	<b>5.5%</b>	<b>168,141</b>	<b>0.2%</b>	<b>168,514</b>	<b>165,350</b>	<b>-1.9%</b>	<b>160,800</b>		
CHILD WELFARE	4302	14.9%	4,945	2.2%	5,002	16.5%	5,887	6,950	18.1%	6,996		
<b>TOTAL MEDICAID</b>	<b>143003</b>	<b>14.8%</b>	<b>164,168</b>	<b>5.4%</b>	<b>173,081</b>	<b>0.7%</b>	<b>174,289</b>	<b>172,300</b>	<b>-1.1%</b>	<b>167,295</b>		
FOOD STAMPS	91216	17.3%	106,966	12.0%	119,750	1.9%	122,042	118,370	-3.0%	119,596		
CHILD CARE DEVELOPMENT FUND	N/A	N/A	N/A	N/A	6,458	23.5%	7,976	10,909	36.8%	10,782		

Notes 1. Retros from MFP Report WL80737A 1 year after the FY ends.  
 2. Child Welfare is Title XIX only.  
 3. Family Preservation Program (FPP/COF) transferred to MHDS effective FY06.  
 \*\* FFP recipients are not automatically eligible for Medicaid and have been deducted from the Total Medicaid line (FY02-05).  
 \*\*\* FY02 Kinship average is based on a 6-mo average, since the program started mid-fiscal year. A 12-month average is used for FY02 Total TANF. Therefore, Total TANF will not equal the sum of each program since Kinship is listed at a higher 6-month average.  
 \*\* FY06 Hurricane Katrina average is based on a 4-mo average, since the program started mid-fiscal year and will end December 2005. A 12-month average is used for FY06 Total TANF. Therefore, Total TANF will not equal the sum of each program since Hurricane Katrina is listed at a higher 4-month average.

	CHANGE OVER TIME: PERCENT CHANGE YEAR OVER YEAR					
	2007-2008 %chg	FY08	2008-2009 %chg	FY09	2009-2010 %chg	FY10
TANF Single Parent Grants	17.8%	11,082	1.0%	11,196	25.8%	14,548
TANF Two Parent Leap Grants	0.3%	154	-5.2%	145	45.0%	210
TANF Two Parent Grants	47.0%	2,115	26.5%	2,675	54.3%	4,127
TANF Relative Caregiver Grants	-10.6%	2,562	-6.4%	2,397	-2.8%	2,330
TANF Kinship Grants	5.0%	500	2.0%	510	6.1%	541
TANF Child Only Non-Qualified Non-Citizen Grants	10.9%	2,088	43.0%	2,986	54.7%	4,621
TANF SSI Household Grants	N/A	1,479	2.6%	1,517	1.7%	1,544
TANF Temporary Program Grants	N/A	520	-80.2%	103		
TANF Iowa Program Grants	N/A	838	19.0%	1,022	13.3%	1,163
TANF Self-Sufficiency Grants	N/A	12	-56.7%	5	-88.9%	1
<b>TOTAL TANF GRANTS</b>	<b>15.7%</b>	<b>21,022</b>	<b>7.3%</b>	<b>22,556</b>	<b>28.9%</b>	<b>29,084</b>
TANF Related Med	24.3%	80,813	11.6%	90,177	20.8%	108,951
<b>TOTAL TANF</b>	<b>0.1%</b>	<b>80,813</b>	<b>11.6%</b>	<b>90,177</b>	<b>20.8%</b>	<b>108,951</b>
CHAP	11.9%	32,075	24.8%	43,255	48.3%	64,153
AGED	2.8%	11,120	2.0%	11,347	-12.5%	9,937
BLIND	-1.3%	371	3.7%	385	-14.2%	330
DISABLED	3.5%	26,360	4.0%	27,415	-1.4%	27,040
HCBW (DWSS)						
HCBW (DHCFP)						
QMB	7.1%	7,594	11.0%	8,431	8.2%	9,123
SLMB	6.9%	6,599	7.1%	7,071	10.6%	7,819
RIWA	36.6%	28	-39.6%	17	-25.6%	13
COUNTY MATCH	-3.4%	1,419	0.5%	1,425	-4.6%	1,359
<b>TOTAL TANF &amp; MAABD (DWSS HCBW ONLY)</b>	<b>3.5%</b>	<b>166,379</b>	<b>13.9%</b>	<b>182,522</b>	<b>22.6%</b>	<b>232,448</b>
CHILD WELFARE	7.1%	7,492	0.6%	7,534	7.3%	8,080
<b>TOTAL MEDICAID (DWSS)**</b>	<b>3.6%</b>	<b>173,871</b>	<b>13.3%</b>	<b>197,056</b>	<b>22.1%</b>	<b>240,528</b>
<b>TOTAL MEDICAID (DHCFP)**</b>						<b>240,495</b>
Supplemental Nutrition Assistance Program (SNAP)	15.0%	137,359	30.7%	179,750	44.8%	260,327
<b>CHILD CARE DEVELOPMENT FUND with zero</b>	<b>6.8%</b>	<b>11,511</b>	<b>-19.9%</b>	<b>9,215</b>	<b>-19.9%</b>	<b>7,383</b>

Notes: 1. Based from APP Report VL80737A 1 year after the FY code reset for FY10, FY11, FY12 & FY13 are estimates.  
 2. Child Welfare is This XIV only.  
 3. TANF Temporary Program Leap Program and Self-Sufficiency Program begins October 2007.  
 4. TANF Temporary Program ends October 2008. Will only be used for emergency situations (annual disaster, etc.)  
 \*\*Beginning October 2007, all TANF Cash Program recipients are not automatically eligible for Medicaid and have been deducted from the Total Medicaid line. TANF Cash recipients have a dual TANF Med aid code.  
 \*\*\*Beginning Fiscal Year 2010, HCBW has been removed from Aged, Blind & Disabled and is tracked separately. Both DWSS & DHCFP are shown for comparison purposes. Total Medicaid will be listed for both DWSS & DHCFP total.  
 NOTE: DWSS TOTAL MEDICAID INCLUDES HCBW PROVIDED BY DWSS AND MAY VARY UP TO A 3-MONTH LAG TIME.  
 NOTE: DWSS TOTAL MEDICAID IS FROM AFRISA MONTHLY AID CODE REPORT FOR THE CURRENT MONTH.

FY93 - FY99 MEDICAID ELIGIBLES: ANNUAL AVERAGE MONTHLY TOTALS

MEDICAID ELIGIBLE RECIPIENT CATEGORY	FY93 AVG		FY94 AVG		FY95 AVG		FY96		FY97		FY98		FY99	
	CURR ELIG	RETRO ELIG	CURR ELIG	RETRO ELIG	CURR ELIG	RETRO ELIG	CURR ELIG	RETRO ELIG	CURR ELIG	RETRO ELIG	CURR ELIG	RETRO ELIG	CURR ELIG	RETRO ELIG
TANF 1 Parent Grants	32945	32945	35670	35670	38939	38939	38010	38010	30114	30114	26595	26595	20964	20964
TANF RELATED MED	3257	3257	3747	3747	4362	4362	5440	5440	5206	5206	5559	5559	8733	8733
CHAP	10811	12416	12980	15019	15501	18071	18389	20946	21007	23716	21812	24938	24123	27213
<b>TOT TANF 1 Prnt</b>	<b>47,013</b>		<b>52,397</b>		<b>58,802</b>		<b>61,839</b>		<b>56,327</b>		<b>53,966</b>		<b>53,820</b>	
TANF 2 Parent Grants	1410	1410	1673	1673	1634	1634	1210	1210	762	762	1254	1254	936	936
TANF-UP MED 437	203	203	271	271	301	301	205	205	119	119	20	20	0	0
TANF Two Parent Rel Med	594	594	1291	1291	2129	2129	2753	2753	3007	3007	3340	3340	4072	4072
<b>TOT TANF 2 Prnt</b>	<b>2,207</b>		<b>3,235</b>		<b>4,064</b>		<b>4,168</b>		<b>3,888</b>		<b>4,613</b>		<b>5,007</b>	
TOT TANF GRANTS	34355	34355	37343	37343	40573	40573	39220	39220	30876	30876	27848	27848	21900	21900
TOT TANF MED	4054	4034	5309	5309	6792	6792	8398	8398	8332	8332	8919	8919	12805	12805
CHAP	10811	12416	12980	15019	15501	18071	18389	20946	21007	23716	21812	24938	24123	27213
<b>TOTAL TANF</b>	<b>49,220</b>		<b>55,632</b>		<b>62,866</b>		<b>66,007</b>		<b>60,215</b>		<b>58,579</b>		<b>58,827</b>	
AGED	6182	6604	6718	7092	7179	7567	7533	7937	7663	8031	7708	8137	7893	8297
BLIND	355	373	365	381	376	389	374	386	375	388	377	393	389	403
DISABLED	8291	9658	9632	11177	11284	12982	12864	14591	13606	15120	13978	15703	15026	16775
QMB	2204	2308	2521	2648	3014	3226	3523	3742	3966	4169	4118	4347	4561	4632
SLMB			177	177	419	419	949	949	1278	1278	1545	1545	1988	1988
COUNTY MATCH	623	761	776	926	910	1057	842	1007	912	1098	899	1072	953	1145
<b>TOT TANF &amp; MAABD</b>	<b>66,875</b>	<b>70,529</b>	<b>75,821</b>	<b>80,072</b>	<b>86,048</b>	<b>91,076</b>	<b>92,092</b>	<b>97,176</b>	<b>86,015</b>	<b>93,008</b>	<b>87,204</b>	<b>92,902</b>	<b>89,637</b>	<b>95,157</b>
REFUGEE	89	106	62	93										
CHILD WELFARE	1474	2087	1425	2174	2481	2722	2716	2842	2744	2899	3381	3365	3612	3466
<b>TOTAL MEDICAID</b>	<b>68,438</b>	<b>72,722</b>	<b>77,308</b>	<b>82,339</b>	<b>88,529</b>	<b>93,798</b>	<b>94,808</b>	<b>100,018</b>	<b>90,759</b>	<b>95,907</b>	<b>90,585</b>	<b>96,267</b>	<b>93,249</b>	<b>98,623</b>

NOTES: 1. Totals may not sum due to rounding. Retros are from system WL80737A one year after the FY ends. TANF Cash and TANF MED have no retro. AFDC/TANF has no retro. NSWSD Refugee program ended 6/30/94.

FY00 - FY05 MEDICAID ELIGIBLES: ANNUAL AVERAGE MONTHLY TOTALS

MEDICAID ELIGIBLE RECIPIENT CATEGORY	FY00		FY01		FY02		FY03		FY04		FY05	
	CURR ELIG	RETRO ELIG	CURR ELIG	RETRO ELIG	CURR ELIG	RETRO ELIG	CURR ELIG	RETRO ELIG	CURR ELIG	RETRO ELIG	CURR ELIG	RETRO ELIG
TANF 1 PARENT GRANTS	15,330	15,830	16,887	16,867	19,654	19,501	19,501	19,501	15,010	15,010	12,442	12,442
TANF 2 PARENT GRANTS	831	831	1,256	1,256	390	329	329	329	215	215	231	231
(AJ) TANF 3 PARENT INCAP GRANTS			3,211	3,211	3,489	3,489	3,489	3,489	2,340	2,340	1,912	1,912
(RUP) TANF 4 PARENT GRANTS			3,869	3,869	4,279	4,279	4,279	4,279	3,551	3,551	3,209	3,209
(COG) TANF KINSHIP GRANTS			**53	**53	285	285	285	285	281	281	306	306
(COA) TANF NONQUALIFYING GRANTS			1,018	1,018	1,657	1,657	1,657	1,657	1,808	1,808	1,886	1,886
(COS) TANF SSI HOUSEHOLD GRANTS			526	526	1,381	1,381	1,381	1,381	1,639	1,639	1,651	1,651
(COS) TANF FFP GRANTS*			112	112	112	112	112	112	112	112	112	112
<b>TOTAL TANF GRANTS</b>	<b>16,661</b>	<b>16,661</b>	<b>18,123</b>	<b>18,123</b>	<b>20,809</b>	<b>20,809</b>	<b>20,809</b>	<b>20,809</b>	<b>24,956</b>	<b>24,956</b>	<b>21,748</b>	<b>21,748</b>
TANF RELATED MED	18,810	18,810	32,140	32,140	45,290	45,290	45,290	45,290	67,929	67,929	70,687	70,687
CHAP	24,222	25,364	21,177	21,177	19,258	23,677	23,677	23,677	23,154	26,650	23,659	26,752
<b>TOTAL TANF RELATED MED</b>	<b>43,032</b>	<b>44,174</b>	<b>53,317</b>	<b>53,317</b>	<b>64,548</b>	<b>68,967</b>	<b>68,967</b>	<b>68,967</b>	<b>91,083</b>	<b>94,579</b>	<b>94,347</b>	<b>97,439</b>
TOTAL TANF GRANTS	16,661	16,661	18,123	18,123	20,809	20,809	20,809	20,809	24,956	24,956	21,748	21,748
TOTAL TANF MED	43,032	44,174	53,317	53,317	64,548	68,967	68,967	68,967	91,083	94,579	94,347	97,439
<b>TOTAL TANF</b>	<b>59,694</b>	<b>60,836</b>	<b>71,440</b>	<b>71,440</b>	<b>85,357</b>	<b>89,776</b>	<b>89,776</b>	<b>89,776</b>	<b>116,039</b>	<b>119,555</b>	<b>116,094</b>	<b>119,187</b>
AGED	8,132	8,558	8,217	8,598	8,598	8,919	9,014	9,291	9,462	9,822	9,861	10,125
BLIND	345	330	305	366	305	374	325	337	339	351	344	353
DISABLED	15,943	17,707	17,465	19,332	19,138	21,048	20,602	22,399	21,926	24,314	23,071	24,748
QMB	5,001	4,950	5,293	5,214	5,577	5,566	6,332	6,637	7,558	7,710	7,403	7,410
SLMB	2,326	2,326	3,208	3,208	3,795	3,795	4,305	4,305	4,973	4,973	5,273	5,273
HIWA											7	10
COUNTY MATCH	997	1,198	1,087	1,309	1,161	1,340	1,201	1,373	1,180	1,396	1,229	1,409
<b>TOTAL MAABD</b>	<b>21,604</b>	<b>25,069</b>	<b>35,505</b>	<b>38,047</b>	<b>38,573</b>	<b>41,047</b>	<b>42,109</b>	<b>44,326</b>	<b>45,439</b>	<b>48,685</b>	<b>43,148</b>	<b>46,328</b>
<b>TOTAL TANF &amp; MAABD</b>	<b>81,298</b>	<b>85,905</b>	<b>106,945</b>	<b>109,487</b>	<b>123,930</b>	<b>130,823</b>	<b>131,885</b>	<b>133,602</b>	<b>161,478</b>	<b>164,140</b>	<b>159,242</b>	<b>165,515</b>
CHILD WELFARE	3,854	3,567	4,009	3,822	4,295	4,302	4,985	4,945	5,088	5,052	6,271	5,887
<b>TOTAL MEDICAID</b>	<b>85,152</b>	<b>89,472</b>	<b>110,954</b>	<b>113,309</b>	<b>128,225</b>	<b>135,125</b>	<b>136,867</b>	<b>138,547</b>	<b>166,566</b>	<b>169,192</b>	<b>165,513</b>	<b>171,402</b>

NOTE: Totals may not sum due to rounding. Totals are from VA 4017A one year data for the FY ends. TANF Cash and TANF MED have no totals for FY05. Kinship average is based on 14-15 average since the program was not fully implemented in FY05. A 12-month average is used for the spreadsheet for Total TANF. Therefore, Total TANF will not equal the sum of each program since Kinship is listed as a higher 6-month average. FFP totals are based from "Total Medicaid" figures because they are calculated in the "Total TANF" category.

HIWA program starts FY05.



FY06, FY07, FY08 & FY09 MEDICAID ELIGIBLES

MEDICAID ELIGIBLE RECIPIENT CATEGORY	FY06		FY07		FY08		FY09	
	CURRENT ELIG	RETRO ELIG	CURRENT ELIG	RETRO ELIG	CURRENT ELIG	RETRO ELIG	CURRENT ELIG	RETRO ELIG
(AF) TANF 1 PARENT GRANTS	10,818	10,818	9,408	9,408				
(AJ) TANF 2 PARENT INCAP GRANTS	194	194	154	154				
(UP) TANF 2 PARENT GRANTS	1,642	1,642	1,438	1,438				
(CON) TANF NNCIT GRANTS	3,077	3,077	2,864	2,864				
(COK) TANF KINSHIP GRANTS	387	387	459	459				
(COA) TANF NON/QUA/NONCIT GRANTS	2,006	2,006	1,882	1,882				
(COS) TANF SSI HOUSEHOLD GRANTS	1,567	1,567	1,508	1,508				
(HS) TANF RUCIGANE KATRINA GRANTS*	566	566						
TOTAL TANF GRANTS	19,860	19,860	17,712	17,712				
TANF RELATED MED	67,675	67,675	63,008	63,008	80,813	80,813	90,177	90,177
CHAP	24,701	24,701	25,470	25,470	28,591	28,591	39,292	43,255
TOTAL TANF RELATED MED	92,376	92,376	88,478	88,478	109,404	109,404	129,469	133,432
TOTAL TANF GRANTS	10,880	10,880	17,712	17,712	4,934	4,934		
TOTAL TANF MED	92,376	92,376	88,478	88,478	109,404	109,404	129,469	133,432
TOTAL TANF	112,256	112,256	106,190	106,190				
AGED	10,240	10,445	10,383	10,813	10,996	11,120	11,165	11,347
BLIND	354	361	370	376	366	371	381	383
DISABLED	23,430	24,922	23,847	25,468	24,862	26,360	25,847	27,415
QMB	6,927	6,895	7,129	7,088	7,674	7,594	8,507	8,431
SLMB	5,630	5,630	6,171	6,171	6,599	6,599	7,071	7,071
HIWA	21	23	20	21	25	28	16	17
COUNTY MATCH	1,271	1,483	1,285	1,468	1,261	1,419	1,278	1,443
TOTAL MAABD	47,874	49,759	49,485	51,405	51,782	53,491	54,166	56,091
TOTAL TANF & MAABD	160,130	165,590	155,675	160,800	161,186	165,872	163,645	169,522
CHILD WELFARE	7,301	6,950	7,180	6,956	7,790	7,492	7,914	7,534
TOTAL MEDICAID	167,431	172,500	162,775	167,796	173,909	178,298	191,559	197,058

NOTE: Totals may not sum due to rounding. Retros are from WL80737A one year after the FY ends. TANF Cash and TANF MED have no retro.

\*Hurricane Katrina Aid Code HK started Sep 05 and ended Dec 31, 2005 (HK TANF) and Feb 2006 (HK Med-Only).

\*\*Starting October 2007 all TANF Cash Program recipients are not automatically eligible for Medicaid. TANF Cash recipients have a dual TANF Med aid code.

\*\*FY08YTD\*\* column includes July-September 2007 average TANF grants as they were Med eligible during those months.

FY10 MEDICAID ELIGIBLES

MEDICAID ELIGIBLE RECIPIENT CATEGORY	JUL 09			AUG 09			SEP 09			OCT 09			NOV 09			DEC 09			JAN 10			FEB 10			MAR 10			APR 10			MAY 10			JUN 10			FY10 AVG		
	CURR	RETRO	ELIG	CURR	RETRO	ELIG	CURR	RETRO	ELIG	CURR	RETRO	ELIG	CURR	RETRO	ELIG	CURR	RETRO	ELIG	CURR	RETRO	ELIG	CURR	RETRO	ELIG	CURR	RETRO	ELIG	CURR	RETRO	ELIG	CURR	RETRO	ELIG						
TANF RELATED MED	94,130	94,130	100,102	100,102	100,102	100,102	104,291	104,291	104,291	105,424	105,424	106,000	106,000	106,000	106,000	106,000	106,000	106,000	106,000	106,000	106,000	106,000	106,000	106,000	106,000	106,000	106,000	106,000	106,000	106,000	106,000	106,000	106,000	106,000	106,000	106,000			
CHAP	48,791	48,791	49,869	49,869	49,869	51,365	51,365	51,365	51,365	51,365	51,365	51,365	51,365	51,365	51,365	51,365	51,365	51,365	51,365	51,365	51,365	51,365	51,365	51,365	51,365	51,365	51,365	51,365	51,365	51,365	51,365	51,365	51,365	51,365	51,365	51,365	51,365		
TOTAL TANF RELATED MED	142,921	142,921	149,971	149,971	149,971	156,834	156,834	156,834	156,834	156,834	156,834	156,834	156,834	156,834	156,834	156,834	156,834	156,834	156,834	156,834	156,834	156,834	156,834	156,834	156,834	156,834	156,834	156,834	156,834	156,834	156,834	156,834	156,834	156,834	156,834	156,834	156,834		
AGED	9,875	9,801	9,694	9,819	9,724	9,810	9,737	9,864	9,727	9,812	9,727	9,801	9,979	9,958	9,976	9,802	9,927	9,834	9,861	9,915	10,043	9,906	10,032	9,946	10,074	9,801	9,927	9,801	9,927	9,801	9,927	9,801	9,927	9,801	9,927	9,801	9,927		
BLIND	335	316	328	337	330	337	332	335	332	335	332	335	330	333	338	331	323	328	317	320	324	327	321	324	326	329	337	337	337	337	337	337	337	337	337	337	337		
DISABLED	24,679	24,650	24,986	24,986	25,075	24,973	25,248	24,651	25,334	24,790	25,660	27,077	25,660	27,077	25,304	27,228	24,804	27,228	25,971	27,403	26,163	27,666	26,536	27,813	26,593	28,069	25,620	27,040	25,620	27,040	25,620	27,040	25,620	27,040	25,620	27,040	25,620	27,040	
HCBW (DWSS)	3,637	3,673	3,642	3,678	3,625	3,661	3,637	3,673	3,624	3,670	3,660	3,697	3,691	3,728	3,722	3,759	3,722	3,759	3,726	3,773	3,759	3,797	3,779	3,817	3,823	3,873	3,696	3,733	3,696	3,733	3,696	3,733	3,696	3,733	3,696	3,733	3,696		
HCBW (DHCFP)	3,653	3,672	3,617	3,617	3,618	3,618	3,612	3,612	3,612	3,612	3,612	3,612	3,612	3,612	3,612	3,612	3,612	3,612	3,612	3,612	3,612	3,612	3,612	3,612	3,612	3,612	3,612	3,612	3,612	3,612	3,612	3,612	3,612	3,612	3,612	3,612	3,612		
QMB	3,698	3,698	3,802	3,802	3,861	3,861	3,885	3,885	3,885	3,885	3,885	3,885	3,885	3,885	3,885	3,885	3,885	3,885	3,885	3,885	3,885	3,885	3,885	3,885	3,885	3,885	3,885	3,885	3,885	3,885	3,885	3,885	3,885	3,885	3,885	3,885	3,885		
SLMB	7,376	7,376	7,440	7,440	7,501	7,501	7,594	7,594	7,662	7,662	7,767	7,767	7,846	7,846	7,944	7,944	8,044	8,123	8,204	8,284	8,314	8,314	8,314	8,314	8,314	8,314	8,314	8,314	8,314	8,314	8,314	8,314	8,314	8,314	8,314	8,314	8,314		
SIWA	14	14	13	13	13	13	12	12	12	12	11	11	11	11	12	12	12	12	13	13	13	13	14	14	14	13	13	13	13	13	13	13	13	13	13	13	13		
COUNTY MATCH	1,254	1,404	1,239	1,384	1,231	1,379	1,215	1,361	1,202	1,346	1,214	1,360	1,203	1,347	1,206	1,351	1,206	1,351	1,206	1,351	1,206	1,351	1,197	1,347	1,190	1,331	1,214	1,331	1,214	1,331	1,214	1,331	1,214	1,331	1,214	1,331	1,214		
TOTAL MAARD (DWSS HCBW ONLY)	55,646	57,342	56,854	57,729	56,240	56,871	56,640	56,371	56,316	56,649	57,411	57,142	57,707	57,426	57,777	58,421	58,817	59,821	59,168	59,821	58,817	59,821	59,218	60,177	60,899	57,633	58,345	57,633	58,345	57,633	58,345	57,633	58,345	57,633	58,345	57,633	58,345		
TOTAL TANF MED & MAARD (DWSS)	202,857	210,104	206,835	213,714	209,534	217,411	213,869	222,848	216,773	215,018	222,848	218,572	215,488	224,177	224,903	232,837	234,749	242,872	234,749	242,872	234,749	242,872	234,749	242,872	234,749	242,872	234,749	242,872	234,749	242,872	234,749	242,872	234,749	242,872	234,749	242,872	234,749		
CHILD WELFARE	8,079	8,079	8,002	8,002	7,787	7,787	7,923	7,923	7,927	7,927	8,018	8,018	8,147	8,147	8,130	8,130	8,201	8,201	8,201	8,201	8,201	8,215	8,215	8,215	8,215	8,206	8,000	8,000	8,000	8,000	8,000	8,000	8,000	8,000	8,000	8,000	8,000		
TOTAL MEDICAID (DHSS)*	210,586	218,123	214,837	221,716	217,311	225,198	221,893	229,869	224,700	223,145	230,867	228,590	233,435	232,314	237,113	245,992	246,925	251,023	246,925	251,023	246,925	251,023	250,138	259,487	265,851	261,558	246,925	259,487	246,925	259,487	246,925	259,487	246,925	259,487	246,925	259,487	246,925		
TOTAL MEDICAID (DHCFP)**	218,511	226,097	224,000	231,637	227,624	235,551	231,847	239,944	234,701	233,190	240,063	238,349	243,638	242,590	247,118	254,976	256,628	265,837	256,628	265,837	256,628	265,837	264,831	274,824	281,591	276,944	256,628	274,824	256,628	274,824	256,628	274,824	256,628	274,824	256,628	274,824	256,628		

\*NOTE: DHCFP TOTAL MEDICAID INCLUDES HCBW PROVIDED BY DHCFP AND MAY HAVE UP TO A 3 MONTH LAG TIME.

\*\*NOTE: DWSS TOTAL MEDICAID HCBW IS FROM AFSSA MONTHLY AID CODE REPORT FOR THE CURRENT MONTH.

NOTE: Review on R&S caseload. TANF MED may not sum due to rounding.

Welfare Eligibles (two retros): June 2010  
 Table 1. Percent County Caseload of Total Caseload  
 NOTE: THIS IS NOT OFFICIAL NSWD CASELOAD; FOR ESTIMATE ONLY

COUNTY	POP	POP %	TANF CASH	POP %	TANF CASH	CHILD ONLY	TOTAL CASH	TANF MED	CHAP	FS	MCB	AGED	BLIND	DIS-ABLED	QMB	SLMB	QI	COUNTY	HABIT	CWALK	AID CODE GI	TOTAL	TOT MED	SNAP
Carson City	56,506	2.08%	3,04%	5.36%	1.91%	2,68%	2.26%	2.63%	3.37%	2.75%	2.35%	1.63%	2.47%	2.98%	3.72%	2.13%	6.48%	2.23%	1.39%	1.17%	1.40%	2.41%	2.37%	1.06%
Churchill	26,859	0.99%	2.03%	1.84%	1.39%	1.84%	1.30%	0.70%	0.00%	0.46%	1.19%	1.38%	1.32%	1.18%	1.17%	0.90%	1.01%	1.01%	0.79%	0.93%	0.80%	1.11%	1.06%	74.76%
Clark	1,932,040	72.00%	72.83%	74.72%	73.81%	71.97%	74.17%	75.59%	71.97%	62.39%	76.45%	71.66%	72.21%	72.31%	67.79%	66.49%	68.35%	63.67%	71.43%	74.92%	44.83%	73.69%	73.69%	0.83%
Douglas	51,190	1.90%	0.79%	0.63%	0.74%	0.63%	0.74%	0.85%	0.93%	2.99%	0.69%	0.27%	0.78%	0.78%	1.06%	1.20%	1.44%	0.93%	0.87%	1.15%	0.93%	0.90%	0.90%	1.09%
Elko	51,323	1.89%	1.62%	0.87%	1.39%	1.40%	1.39%	1.40%	1.65%	2.34%	1.42%	1.91%	1.33%	1.44%	1.08%	1.08%	1.00%	2.10%	1.48%	1.48%	0.80%	1.47%	0.01%	0.01%
Esmeralda	1,187	0.04%	0.00%	0.00%	0.01%	0.00%	0.01%	0.01%	0.01%	0.00%	0.03%	0.00%	0.03%	0.06%	0.00%	0.00%	0.00%	0.00%	0.02%	0.00%	0.00%	0.01%	0.01%	0.01%
Eureka	1,562	0.06%	0.02%	0.01%	0.01%	0.01%	0.01%	0.01%	0.02%	0.00%	0.03%	0.03%	0.01%	0.41%	0.43%	0.43%	0.62%	0.76%	0.23%	0.23%	0.40%	0.40%	0.46%	0.46%
Humboldt	17,690	0.65%	0.16%	0.35%	0.64%	0.56%	0.56%	0.56%	0.56%	1.69%	2.29%	0.27%	0.27%	0.61%	0.18%	0.18%	0.10%	0.67%	0.22%	0.17%	0.17%	0.17%	0.13%	0.13%
Lander	6,003	0.22%	0.19%	0.10%	0.16%	0.13%	0.13%	0.17%	0.17%	0.00%	0.46%	0.24%	0.24%	0.23%	0.33%	0.23%	0.17%	0.59%	0.21%	0.09%	0.09%	0.15%	0.11%	0.11%
Lincoln	4,317	0.16%	0.16%	0.01%	0.01%	0.01%	0.01%	0.12%	0.12%	0.60%	0.00%	0.00%	0.00%	0.19%	0.19%	0.17%	0.17%	0.25%	1.65%	1.82%	1.41%	1.51%	1.61%	1.61%
Lyon	53,825	1.99%	1.13%	1.03%	1.11%	1.59%	1.11%	1.59%	1.08%	1.69%	5.51%	1.15%	0.82%	1.64%	0.93%	2.46%	1.62%	1.42%	0.94%	1.82%	0.74%	0.83%	0.24%	0.24%
Mineral	4,474	0.17%	0.33%	0.17%	0.32%	0.27%	0.27%	0.27%	0.91%	3.46%	3.07%	1.57%	1.09%	0.33%	3.33%	3.88%	4.49%	1.35%	1.67%	0.94%	0.83%	2.46%	2.72%	2.72%
Nye	46,360	1.71%	2.49%	2.32%	2.48%	2.70%	2.48%	2.70%	1.91%	2.54%	1.57%	0.82%	0.82%	2.66%	0.96%	3.88%	4.49%	1.35%	1.67%	0.94%	0.83%	2.46%	2.72%	2.72%
Perkins	7,149	0.26%	0.19%	0.12%	0.17%	0.13%	0.17%	0.13%	0.13%	0.85%	0.06%	0.18%	0.18%	0.18%	0.23%	0.23%	0.31%	0.59%	2.71%	1.70%	0.17%	0.17%	0.15%	0.15%
Storey	4,317	0.16%	0.01%	0.04%	0.02%	0.02%	0.02%	0.02%	0.02%	0.00%	0.06%	0.01%	0.00%	0.03%	0.03%	0.03%	0.03%	0.00%	0.03%	0.09%	0.37%	0.19%	0.03%	0.03%
Washoe	416,632	15.37%	14.19%	12.01%	13.50%	14.66%	13.50%	14.66%	13.97%	9.32%	16.51%	13.31%	19.07%	15.55%	18.41%	17.87%	17.14%	18.50%	15.93%	15.41%	20.67%	14.46%	14.13%	14.13%
White Pine	9,370	0.35%	0.26%	0.17%	0.23%	0.17%	0.23%	0.17%	0.31%	0.00%	1.38%	0.41%	0.27%	0.46%	0.46%	0.36%	0.36%	1.56%	0.45%	0.32%	0.56%	0.35%	0.35%	0.35%
State	2,711,204	100.00%	100.00%	100.00%	100.00%	100.00%	100.00%	100.00%	100.00%	100.00%	100.00%	100.00%	100.00%	100.00%	100.00%	100.00%	100.00%	100.00%	100.00%	100.00%	100.00%	100.00%	100.00%	100.00%

NOTE: June 2010 was SNAP highest recipient count (289,654) on AME44A.

NOTE: "TANF CASH" INCLUDES ALL CASH AID CODES WITH EXCEPTION OF CHILD ONLY AID CODES. "FS" IS NOT XIX MEDICAID (PART OF HIFA) AND IS NOT COUNTED IN TOTAL MEDICAID.

NOTE: ALL CASH AID CODES HAVE BEEN DELINKED FROM MEDICAID. CASH AID CODES HAVE A DUAL AID CODE FOR TANF MED. TOTAL TANF CASH IS NOT INCLUDED IN TOTAL MEDICAID.

Source: NSWD AME44A, no date 07/01/10  
 Population: Nevada County Population Estimates for 2009 dated March 2010 by the Nevada State Demographer.

Welfare Eligibility (w/o retro): June 2010  
 Table 2. Percent County Caseload of County Population  
 NOTE: THIS IS NOT OFFICIAL NSWD CASELOAD; FOR ESTIMATE ONLY

COUNTY	POP	POP %	CASH	CHILD ONLY	TOTAL CASH	TANF MED	CHAP	FS	MCB	AGED BLIND	DIS- ABLED	QMB	SLMB	QI	COUNTY	MAAB	CWIXN	AID CODE-GI	TOTAL CW%I	TOT MED	SNAP
C Carson City	36,306	3.06%	1.03%	0.31%	1.36%	4.37%	3.12%	0.01%	0.01%	0.30%	1.25%	0.51%	0.37%	0.14%	0.14%	2.9%	0.25%	0.03%	0.46%	16.87%	12.14%
C Clark	26,839	0.99%	1.49%	0.47%	1.96%	3.69%	1.75%	0.00%	0.00%	0.32%	1.40%	0.43%	0.24%	0.10%	0.04%	2.7%	0.38%	0.02%	0.39%	14.48%	11.46%
C Clark	1,932,040	72.00%	0.75%	0.30%	1.05%	4.65%	2.59%	0.00%	0.01%	0.46%	1.06%	0.34%	0.19%	0.10%	0.04%	2.7%	0.30%	0.01%	0.37%	14.48%	11.09%
C Douglas	51,390	1.90%	0.10%	0.11%	0.41%	1.97%	1.34%	0.00%	0.01%	0.16%	0.43%	0.20%	0.14%	0.05%	0.05%	1.01%	0.21%	0.01%	0.22%	4.43%	4.70%
C Elko	51,325	1.89%	0.62%	0.15%	0.77%	3.21%	2.15%	0.01%	0.01%	0.32%	0.74%	0.27%	0.12%	0.05%	0.05%	1.57%	0.27%	0.00%	0.16%	7.23%	6.16%
C Esmeralda	1,187	0.04%	0.00%	0.00%	0.00%	0.31%	0.84%	0.00%	0.00%	0.17%	0.67%	0.00%	0.00%	0.00%	0.00%	0.84%	0.00%	0.00%	0.00%	2.19%	1.83%
C Eureka	1,562	0.06%	0.19%	0.06%	0.26%	0.98%	0.83%	0.00%	0.00%	0.19%	0.19%	0.26%	0.06%	0.13%	0.06%	0.83%	0.19%	0.06%	0.26%	2.88%	2.30%
C Humboldt	17,600	0.65%	0.84%	0.20%	1.03%	3.31%	1.11%	0.01%	0.03%	0.34%	0.98%	0.23%	0.14%	0.10%	0.05%	1.85%	0.23%	0.03%	0.23%	7.54%	7.58%
C Lander	6,003	0.22%	0.63%	0.15%	0.78%	3.35%	1.92%	0.00%	0.02%	0.47%	1.23%	0.37%	0.17%	0.09%	0.12%	2.27%	0.27%	0.03%	0.30%	7.01%	6.46%
C Lincoln	4,317	0.16%	0.05%	0.02%	0.07%	3.34%	2.46%	0.00%	0.00%	0.63%	0.87%	0.35%	0.23%	0.09%	0.03%	1.84%	0.32%	0.14%	0.46%	7.13%	6.60%
C Lyon	33,825	1.39%	0.41%	0.18%	0.59%	3.47%	1.34%	0.00%	0.00%	0.25%	2.12%	0.85%	0.69%	0.34%	0.11%	4.81%	0.94%	0.09%	0.18%	13.97%	15.29%
C Mineral	4,474	0.17%	1.72%	0.34%	2.06%	7.02%	1.92%	0.00%	0.00%	0.60%	2.12%	0.68%	0.47%	0.26%	0.03%	3.56%	0.94%	0.09%	0.30%	13.51%	15.98%
C Nye	46,360	1.71%	1.05%	0.45%	1.50%	6.86%	2.76%	0.01%	0.00%	0.46%	1.64%	0.32%	0.17%	0.10%	0.06%	1.76%	0.19%	0.02%	0.22%	4.19%	4.08%
C Pershing	7,149	0.26%	0.53%	0.15%	0.69%	3.01%	1.30%	0.01%	0.00%	0.29%	0.73%	0.32%	0.17%	0.13%	0.06%	3.56%	0.19%	0.05%	0.23%	1.48%	1.99%
C Storey	4,317	0.16%	0.05%	0.09%	0.14%	0.49%	0.37%	0.00%	0.02%	0.02%	0.19%	0.65%	0.09%	0.02%	0.00%	0.37%	0.15%	0.03%	0.17%	1.48%	1.99%
C Washoe	416,632	15.37%	0.67%	0.26%	0.93%	4.12%	2.24%	0.00%	0.01%	0.37%	1.00%	0.43%	0.34%	0.12%	0.05%	2.39%	0.35%	0.03%	0.37%	9.04%	9.82%
C White Pine	9,570	0.35%	0.53%	0.16%	0.69%	3.85%	2.18%	0.00%	0.03%	0.52%	1.36%	0.45%	0.21%	0.11%	0.20%	2.84%	0.24%	0.03%	0.23%	6.28%	8.41%
State	2,711,206	100.00%	0.72%	0.33%	1.05%	4.34%	2.47%	0.00%	0.01%	0.43%	1.05%	0.36%	0.21%	0.11%	0.04%	2.21%	0.35%	0.02%	0.37%	6.37%	10.68%

NOTE: June 2010 was SNAP highest recipient count (289,654) on AME444.

NOTE: "TANF CASH" INCLUDES ALL CASH AID CODES WITH EXCEPTION OF CHILD ONLY AID CODES. "FS" IS NOT NINE MEDICAID (PART OF BEFA) AND IS NOT COUNTED IN TOTAL MEDICAID.

NOTE: ALL CASH AID CODES HAVE BEEN DELINKED FROM MEDICAID. CASH AID CODES HAVE A DUAL AID CODE FOR TANF MED. TOTAL TANF CASH IS NOT INCLUDED IN TOTAL MEDICAID.

Source: NSWD AME444, run date 07/01/10.

Population: Nevada County Population Estimates for 2009 dated March 2010 by the Nevada State Demographer.

Welfare Eligibles (two zeros): June 2010  
 Table 3. Percent County Caseload of Total Statewide Population  
 NOTE: THIS IS NOT OFFICIAL NSWD CASELOAD; FOR ESTIMATE ONLY

COUNTY	POP	POP %	CASH	CHILD ONLY	TANF MED	CHAP	PS	MCB	AGED	BLIND	DIS-ABLED	OMB	SLMB	QI	COUNTY	HAARD	CWAK	AID CODE 61	TOTAL CH/61	TOT MED	SNAP
Carson City	36,306	2.08%	0.0219%	0.0044%	0.0233%	0.0558%	0.0001%	0.0002%	0.0101%	0.0002%	0.0360%	0.0107%	0.0706%	0.0038%	0.0028%	0.0664%	0.0048%	0.0068%	0.0254%	0.2263%	0.2330%
Churchill	28,839	0.99%	0.0148%	0.0046%	0.0194%	0.0564%	0.0000%	0.0000%	0.0015%	0.0002%	0.0139%	0.0432%	0.0245%	0.0109%	0.0064%	0.0272%	0.0037%	0.0023%	0.0225%	0.6191%	0.1133%
Clark	1,932,040	72.00%	0.5248%	0.1065%	3.2024%	1.8653%	0.0034%	0.0002%	0.3290%	0.0097%	0.7597%	0.2477%	0.1364%	0.0734%	0.0079%	7.5793%	0.3590%	0.0022%	0.0225%	0.8673%	7.9873%
Douglas	51,390	1.90%	0.0857%	0.0031%	0.0078%	0.0373%	0.0000%	0.0002%	0.0000%	0.0000%	0.0082%	0.0038%	0.0236%	0.0012%	0.0004%	0.0193%	0.0040%	0.0002%	0.0042%	0.6199%	0.0815%
Elko	51,235	1.89%	0.0117%	0.0029%	0.0146%	0.0607%	0.0001%	0.0001%	0.0061%	0.0003%	0.0139%	0.0072%	0.0231%	0.0011%	0.0000%	0.0094%	0.0000%	0.0000%	0.0007%	0.1181%	0.1166%
Esmeralda	1,187	0.04%	0.0000%	0.0000%	0.0000%	0.0000%	0.0000%	0.0000%	0.0001%	0.0000%	0.0001%	0.0000%	0.0000%	0.0000%	0.0000%	0.0000%	0.0000%	0.0000%	0.0000%	0.0000%	0.0000%
Esmeralda	1,562	0.06%	0.0001%	0.0000%	0.0000%	0.0000%	0.0000%	0.0000%	0.0000%	0.0000%	0.0000%	0.0000%	0.0000%	0.0000%	0.0000%	0.0000%	0.0000%	0.0000%	0.0000%	0.0000%	0.0000%
Humboldt	17,690	0.52%	0.0055%	0.0013%	0.0067%	0.0216%	0.0000%	0.0000%	0.0023%	0.0000%	0.0020%	0.0007%	0.0005%	0.0002%	0.0003%	0.0044%	0.0003%	0.0003%	0.0001%	0.0000%	0.0000%
Lander	6,003	0.22%	0.0014%	0.0000%	0.0017%	0.0056%	0.0000%	0.0000%	0.0000%	0.0000%	0.0000%	0.0000%	0.0000%	0.0000%	0.0000%	0.0000%	0.0000%	0.0000%	0.0000%	0.0000%	0.0000%
Lander	4,317	0.16%	0.0001%	0.0000%	0.0011%	0.0031%	0.0000%	0.0000%	0.0000%	0.0000%	0.0000%	0.0000%	0.0000%	0.0000%	0.0000%	0.0000%	0.0000%	0.0000%	0.0000%	0.0000%	0.0000%
Lyon	53,825	1.95%	0.0823%	0.0035%	0.0117%	0.0689%	0.0000%	0.0000%	0.0000%	0.0000%	0.0000%	0.0000%	0.0000%	0.0000%	0.0000%	0.0000%	0.0000%	0.0000%	0.0000%	0.0000%	0.0000%
Lyon	53,825	1.95%	0.0823%	0.0035%	0.0117%	0.0689%	0.0000%	0.0000%	0.0000%	0.0000%	0.0000%	0.0000%	0.0000%	0.0000%	0.0000%	0.0000%	0.0000%	0.0000%	0.0000%	0.0000%	0.0000%
Mineral	4,474	0.17%	0.0023%	0.0006%	0.0044%	0.0166%	0.0000%	0.0000%	0.0000%	0.0000%	0.0000%	0.0000%	0.0000%	0.0000%	0.0000%	0.0000%	0.0000%	0.0000%	0.0000%	0.0000%	0.0000%
Mineral	4,474	0.17%	0.0023%	0.0006%	0.0044%	0.0166%	0.0000%	0.0000%	0.0000%	0.0000%	0.0000%	0.0000%	0.0000%	0.0000%	0.0000%	0.0000%	0.0000%	0.0000%	0.0000%	0.0000%	0.0000%
Nye	46,360	1.71%	0.0180%	0.0077%	0.0357%	0.1173%	0.0000%	0.0000%	0.0000%	0.0000%	0.0000%	0.0000%	0.0000%	0.0000%	0.0000%	0.0000%	0.0000%	0.0000%	0.0000%	0.0000%	0.0000%
Nye	46,360	1.71%	0.0180%	0.0077%	0.0357%	0.1173%	0.0000%	0.0000%	0.0000%	0.0000%	0.0000%	0.0000%	0.0000%	0.0000%	0.0000%	0.0000%	0.0000%	0.0000%	0.0000%	0.0000%	0.0000%
Perkins	7,149	0.26%	0.0014%	0.0004%	0.0078%	0.0032%	0.0000%	0.0000%	0.0000%	0.0000%	0.0000%	0.0000%	0.0000%	0.0000%	0.0000%	0.0000%	0.0000%	0.0000%	0.0000%	0.0000%	0.0000%
Perkins	7,149	0.26%	0.0014%	0.0004%	0.0078%	0.0032%	0.0000%	0.0000%	0.0000%	0.0000%	0.0000%	0.0000%	0.0000%	0.0000%	0.0000%	0.0000%	0.0000%	0.0000%	0.0000%	0.0000%	0.0000%
Storey	4,317	0.16%	0.0001%	0.0000%	0.0002%	0.0002%	0.0000%	0.0000%	0.0000%	0.0000%	0.0000%	0.0000%	0.0000%	0.0000%	0.0000%	0.0000%	0.0000%	0.0000%	0.0000%	0.0000%	0.0000%
Storey	4,317	0.16%	0.0001%	0.0000%	0.0002%	0.0002%	0.0000%	0.0000%	0.0000%	0.0000%	0.0000%	0.0000%	0.0000%	0.0000%	0.0000%	0.0000%	0.0000%	0.0000%	0.0000%	0.0000%	0.0000%
Washoe	416,652	15.37%	0.1022%	0.0460%	0.1422%	0.6313%	0.0000%	0.0000%	0.0000%	0.0000%	0.0000%	0.0000%	0.0000%	0.0000%	0.0000%	0.0000%	0.0000%	0.0000%	0.0000%	0.0000%	0.0000%
Washoe	416,652	15.37%	0.1022%	0.0460%	0.1422%	0.6313%	0.0000%	0.0000%	0.0000%	0.0000%	0.0000%	0.0000%	0.0000%	0.0000%	0.0000%	0.0000%	0.0000%	0.0000%	0.0000%	0.0000%	0.0000%
White Pine	9,570	0.35%	0.0119%	0.0000%	0.0024%	0.0136%	0.0000%	0.0000%	0.0000%	0.0000%	0.0000%	0.0000%	0.0000%	0.0000%	0.0000%	0.0000%	0.0000%	0.0000%	0.0000%	0.0000%	0.0000%
White Pine	9,570	0.35%	0.0119%	0.0000%	0.0024%	0.0136%	0.0000%	0.0000%	0.0000%	0.0000%	0.0000%	0.0000%	0.0000%	0.0000%	0.0000%	0.0000%	0.0000%	0.0000%	0.0000%	0.0000%	0.0000%
State	2,711,206	100.00%	0.7265%	0.3332%	1.0637%	4.3590%	0.0000%	0.0000%	0.4311%	0.0135%	1.0292%	0.2480%	0.2481%	0.1067%	0.0433%	2.2104%	0.3458%	0.0198%	0.2656%	8.2807%	10.6896%

NOTE: June 2010 was SNAP highest recipient count (289,654) on A-ME-44.

NOTE: "TANF CASH" INCLUDES ALL CASH AID CODES WITH EXCEPTION OF CHILD ONLY AID CODES. "PS" IS NOT XIX MEDICAID (PART OF HFA) AND IS NOT COUNTED IN TOTAL MEDICAID.

NOTE: ALL CASH AID CODES HAVE BEEN DELINKED FROM MEDICAID. CASH AID CODES HAVE A DUAL AID CODE FOR TANF MED. TOTAL TANF CASH IS NOT INCLUDED IN TOTAL MEDICAID.

Source: NSWD A-ME-44, run date 07/01/10.  
 Population: Nevada County Population Estimates for 2009 dated March 2010 by the Nevada State Demographer.

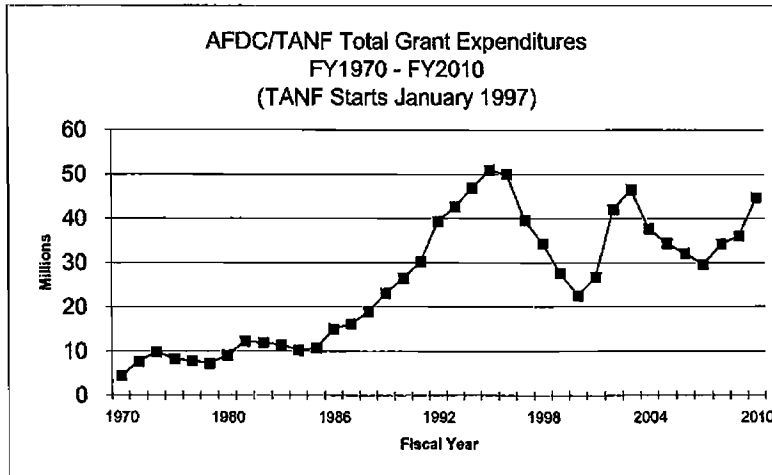
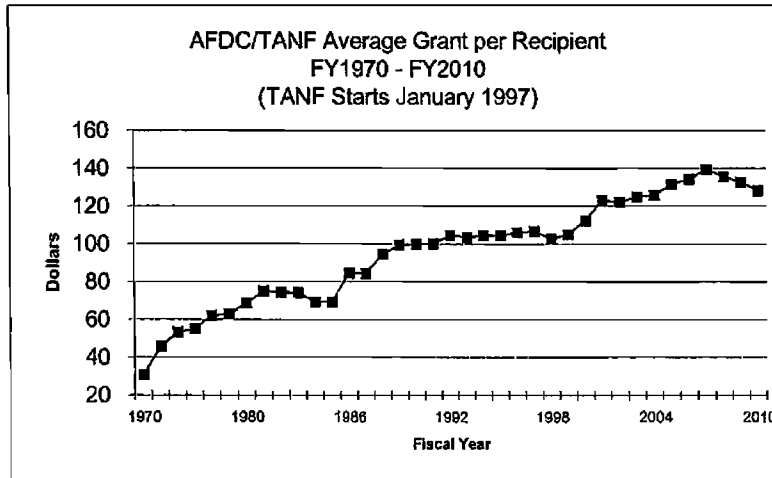
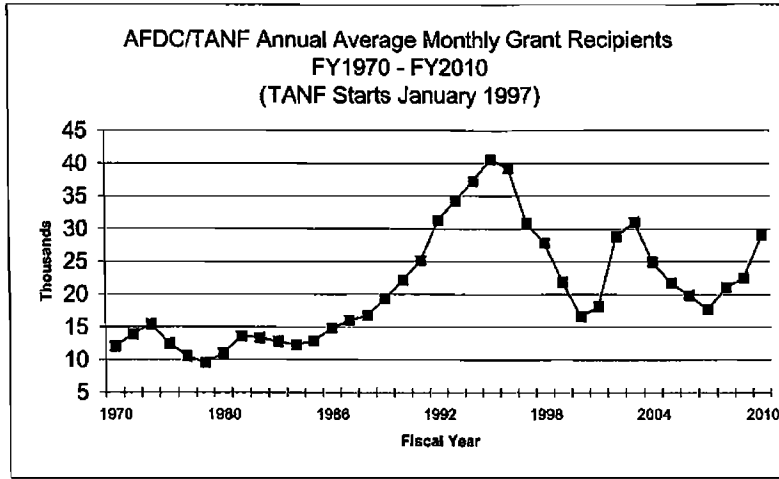
HISTORICAL CASELOAD AND EXPENDITURES

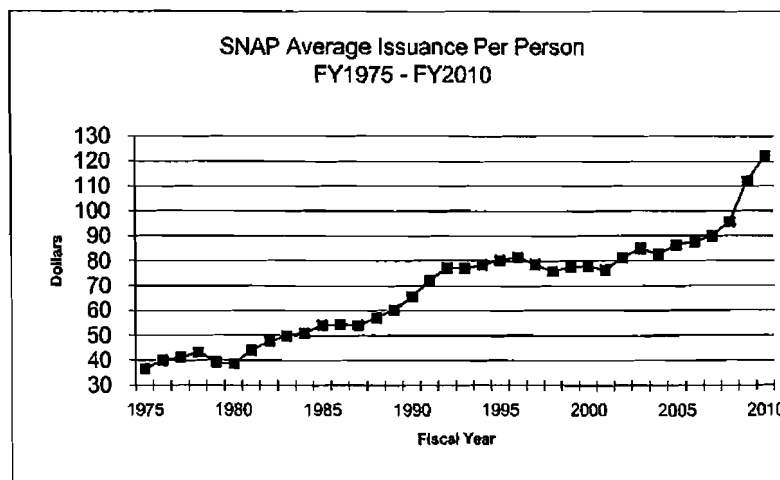
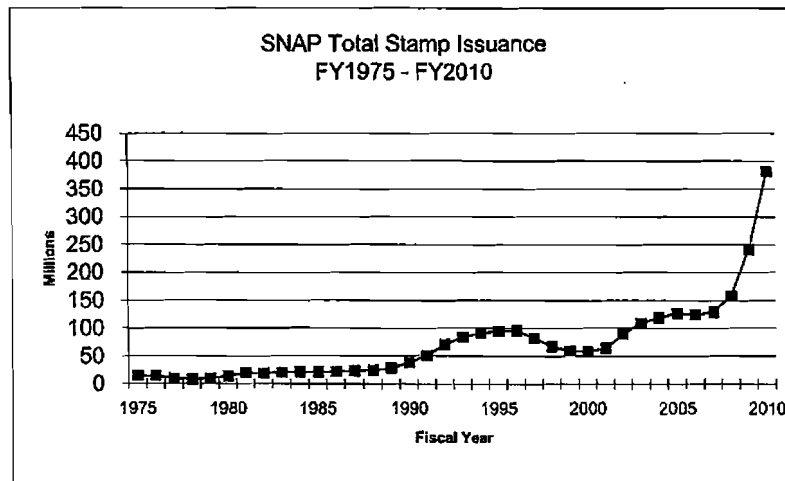
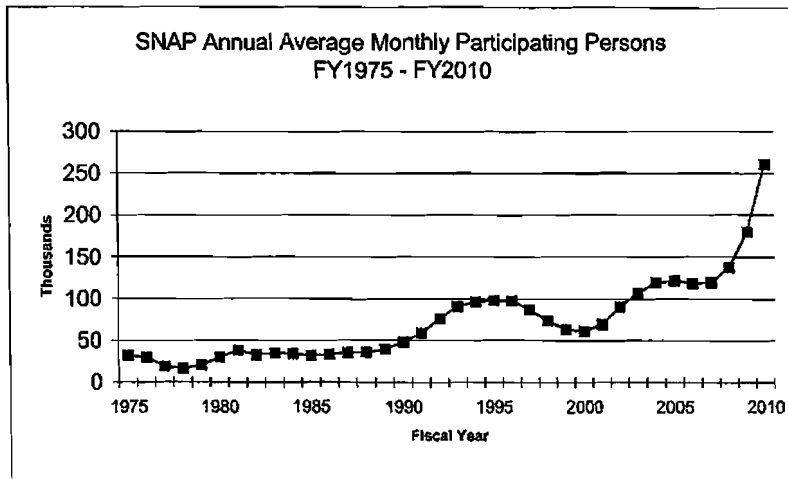
Year	Temporary Assistance for Needy Families			SNAP		Non-Child Welfare		Total Medicaid Eligible		Total Expenditures	Avg per Eligible
	Ann Avg Mon Recd	Total Case Expenditures	Avg per Recipient	Ann Avg Part Rec	Total Income	Non-Child Welfare	Child Welfare	Total Medicaid Eligible			
1970	12,029	\$4,446,297	\$30.80	1970 SNAP began 1973-74							
1975	13,539	\$7,612,498	\$45.52	1975	\$1,407,040	\$36.61	1975 Welfare Division				
1976	15,451	\$9,853,469	\$55.20	1976	\$2,542	\$40.05	for data by program				
1977	13,449	\$8,215,694	\$55.90	1977	19,502	\$41.34					
1978	10,337	\$7,850,172	\$61.92	1978	16,377	\$40.43					
1979	9,932	\$7,194,510	\$62.90	1979	20,207	\$39,578,329					
1980	10,976	\$9,018,866	\$68.48	1980	30,028	\$13,883,244					
1981	13,364	\$12,215,934	\$75.93	1981	37,896	\$20,022,712					
1982	13,370	\$11,094,066	\$74.39	1982	32,829	\$18,814,397					
1983	12,792	\$11,395,305	\$74.17	1983	34,901	\$20,902,797					
1984	12,261	\$10,200,918	\$69.33	1984	34,257	\$20,993,546					
1985	12,904	\$10,715,265	\$69.20	1985	32,271	\$21,028,093					
1986	14,814	\$15,042,113	\$84.62	1986	33,346	\$21,824,575					
1987	15,999	\$16,182,445	\$84.29	1987	35,097	\$23,264,589					
1988	16,708	\$18,932,847	\$84.43	1988	35,737	\$24,509,975					
1989	19,359	\$23,114,321	\$89.50	1989	39,655	\$38,674,711					
1990	21,137	\$26,549,323	\$99.36	1990	48,302	\$37,979,988					
1991	25,143	\$30,175,865	\$106.01	1991	58,500	\$50,905,549					
1992	31,286	\$39,572,113	\$104.61	1992	75,995	\$70,170,210					
1993	34,355	\$42,668,777	\$103.50	1993	60,678	\$83,710,380					
1994	37,543	\$46,894,747	\$104.65	1994	66,470	\$99,839,028					
1995	40,574	\$50,888,030	\$104.52	1995	98,123	\$94,591,541					
1996	39,221	\$49,958,695	\$106.15	1996	97,698	\$95,575,952					
1997	39,876	\$39,380,615	\$106.83	1997	86,814	\$82,010,465					
1998	27,848	\$34,154,738	\$102.84	1998	73,776	\$67,216,868					
1999	21,900	\$27,608,156	\$105.13	1999	63,503	\$59,063,848					
2000	16,661	\$22,592,285	\$112.57	2000	61,490	\$37,400,692					
2001	18,123	\$26,782,105	\$112.98	2001	70,016	\$64,127,521					
2002	28,809	\$41,990,487	\$112.10	2002	91,216	\$88,811,716					
2003	31,034	\$46,468,562	\$112.91	2003	106,966	\$109,047,479					
2004	24,956	\$37,691,175	\$112.80	2004	119,750	\$116,632,583					
2005	21,748	\$34,907,844	\$111.56	2005	122,042	\$126,436,377					
2006	19,880	\$32,015,344	\$111.26	2006	115,370	\$124,485,526					
2007	17,712	\$29,579,790	\$119.33	2007	119,596	\$129,240,045					
2008	21,022	\$34,190,591	\$135.70	2008	137,589	\$157,984,295					
2009	23,556	\$35,925,608	\$132.73	2009	179,790	\$241,986,318					
2010	29,084	\$44,736,022	\$138.21	2010	260,417	\$381,593,683					

1. Years are fiscal years.  
 2. Recipients are annual average monthly total.  
 3. Expenditures are annual average expenditures for the year for grants, both state and federal.  
 4. All information derived from Kansas Budget Reports and Economic & Statistical Services Division.  
 5. NSWD Budget Account 9370.

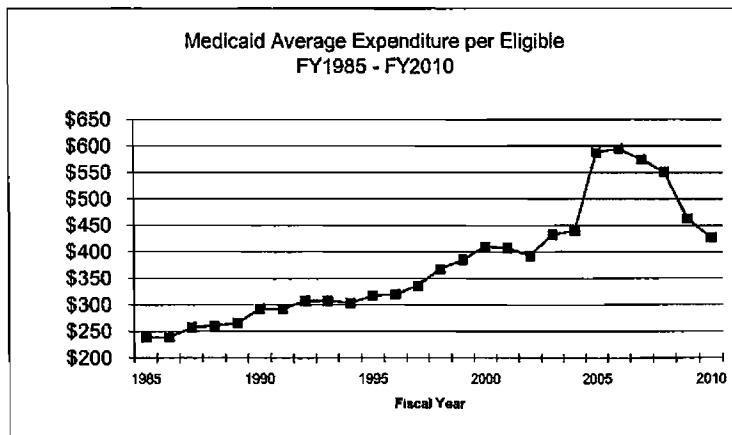
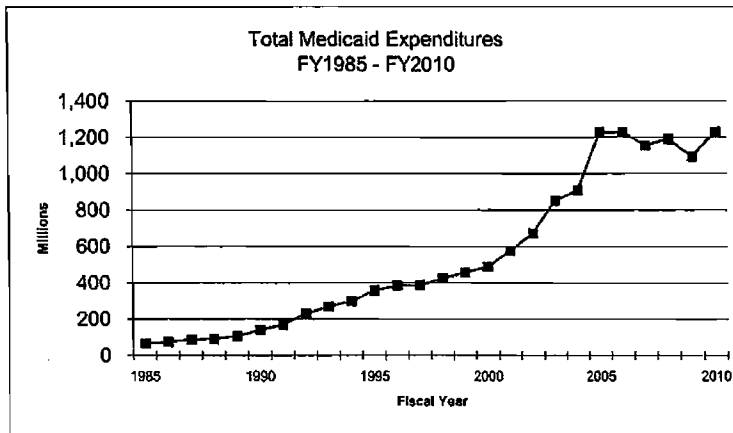
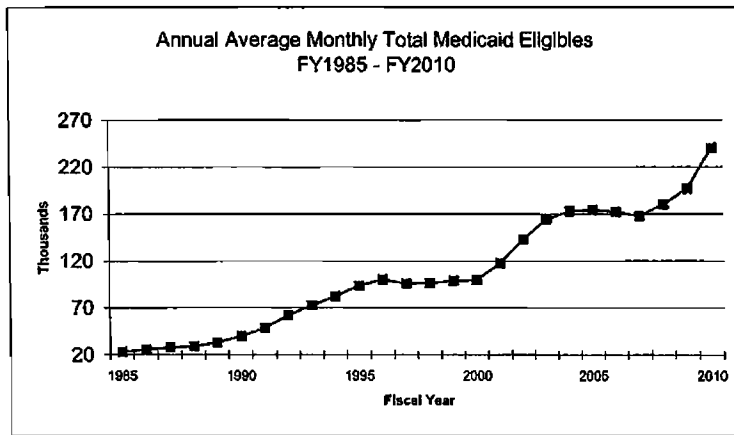
1. Although the SNAP program began nationally in 1965, Nevada's program did not begin until 1973.  
 2. Years are fiscal years.  
 3. Participating Partner = annual average monthly total.  
 4. Total Income = total dollar benefit for the year.  
 5. All information derived from Research & Statistics Division, Health and Human Services, State of Nevada (Budget Report Report, State of Nevada (Budget Report table provides subject data noted as incomplete).  
 6. The Food Conservation and Energy Act (FCEA) replaced the Food Stamp Act of 1961 in 1974. The program was renamed Supplemental Nutrition Assistance Program (SNAP) effective October 2008.  
 7. ABA increased the maximum benefit level of all SNAP households by 13.6% effective 01 APR 2009.

1. Total Medicaid Eligible are all eligible with all expenditures from the system. Eligibles from R&S Eligible Summary, Supplement.  
 2. Years are state fiscal years.  
 3. Eligibles are annual average monthly total.  
 4. Expenditures do not include administrative costs.  
 5. Information derived from Research & Statistics Division, Health and Human Services, State of Nevada (Budget Report Report, State of Nevada (Budget Report table provides subject data noted as incomplete).  
 6. The Food Conservation and Energy Act (FCEA) replaced the Food Stamp Act of 1961 in 1974. The program was renamed Supplemental Nutrition Assistance Program (SNAP) effective October 2008.  
 7. ABA increased the maximum benefit level of all SNAP households by 13.6% effective 01 APR 2009.









TEMPORARY ASSISTANCE FOR NEEDY FAMILIES (AFDC PRIOR TO (1997) CUMULATIVE TOTAL ANNUAL REPORT FY84 - FY92

YEAR	APTS REC'D	% OF APTS TO TOTAL GRANTS	GRANTS WITH PUBLIC HOUSING		GRANTS W/O PUBLIC HOUSING		TOTAL GRANTS 81-84	MED ONLY 04-80-89		TOTAL ELIG 81-89-89		AVG FAM SIZE	TOT GRANTS PAID W/OUT PUB HOUSING	TOT GRANTS PAID W/ PUB HOUSING	TOTAL GRANTS PAID	AVG GRANT PER RECIP W/OUT P.H.	AVG GRANT PER RECIP	AVG GRANT PER FAMILY
			CASES	RECIP	CASES	RECIP		CASES	RECIP	CASES	RECIP							
FY84 TOT	5,512		19,246	60,639	35,648	92,007	71,940	200,501	3,257	6,404	75,197	207,105	\$5,401,439	\$9,547,117	\$18,932,847	\$49.08	\$103.77	\$94.43
FY84 AVG	783	17.1%	2,138	6,737	3,960	10,233	5,295	14,708	271	550	6,266	17,259	\$600,160	\$1,046,791	\$1,577,737			
FY85 TOT	9,414		37,426	84,396	56,583	145,371	84,089	232,387	4,203	8,425	88,212	241,134	\$7,702,946	\$15,270,274	\$23,114,231			
FY85 AVG	785	14.4%	2,286	7,245	4,715	12,114	7,081	19,259	350	735	7,251	20,094	\$665,339	\$1,206,865	\$1,924,193			
FY86 TOT	9,957		31,539	101,115	64,500	166,375	96,039	265,570	9,211	17,940	105,250	283,530	\$9,029,571	\$17,019,540	\$26,549,223			
FY86 AVG	630	15.2%	2,628	8,426	5,375	13,706	6,013	22,132	768	1,485	8,771	23,627	\$752,464	\$1,499,962	\$2,217,444			
FY87 TOT	11,262		33,192	107,248	76,105	194,373	109,297	301,721	29,898	57,285	139,195	259,086	\$9,194,340	\$20,041,525	\$30,175,863			
FY87 AVG	939	15.7%	2,766	8,946	6,362	16,198	9,108	25,144	2,392	4,774	11,499	29,918	\$791,195	\$1,723,460	\$2,544,655			
FY88 TOT	12,693		37,625	119,449	100,331	256,082	137,558	375,431	68,304	118,118	206,660	493,549	\$10,024,861	\$20,044,619	\$30,272,113			
FY88 AVG	1,058	16.9%	3,135	9,946	8,361	21,840	11,436	31,216	5,709	9,433	17,205	41,129	\$26,652,322	\$2,419,552	\$3,272,676			
FY89 TOT	14,176																	
FY89 AVG	1,181	14.1%																
FY90 TOT	20,931																	
FY90 AVG	1,744	19.9%																
FY91 TOT	23,314																	
FY91 AVG	2,360	20.3%																
FY92 TOT	25,965																	
FY92 AVG	2,164	12.5%																

TEMPORARY ASSISTANCE FOR NEEDY FAMILIES (AFDC PRIOR TO 10/97) CUMULATIVE TOTAL  
ANNUAL REPORT FY93 - FY01

YEAR	(1) APPS RECD	(2) % OF APPS TO TOTAL	(3) GRANTS WITH PUBLIC HOUSING 10-44	(4) GRANTS W/O PUBLIC HOUSING 10-44	(5) TOTAL GRANTS 10-44	(6) MED ONLY W & 10-44	(7) TOTAL ELIG CASES 10-44-49	(8) AVG FAM SIZE /GRANT	(9) TOT GRANTS PAID WITH PUB HOUSING	(10) TOT GRANTS PAID W/O PUB HOUSING	(11) TOTAL GRANTS PAID	(12) AVG GRANT PER RECP WITH P.H.	(13) AVG GRANT PER RECP W/O P.H.	(14) AVG GRANT PER GRANT RECP	(15) AVG GRANT PER FAMILY
FY93 TOT	30,092		37,985	120,709	158,694	103,860	255,972	591,640	\$9,384,438	\$33,364,339	\$42,748,776	\$81.22	\$112.72	\$103.50	
FY93 AVG	2,516	19.5%	3,165	10,059	13,224	8,655	21,331	49,220	\$817,097	\$2,738,695	\$3,555,791	\$81.74	\$113.15	\$104.65	
FY94 TOT	34,390		38,291	121,521	159,812	123,469	289,913	667,583	\$9,916,973	\$36,977,774	\$46,894,746	\$81.74	\$113.15	\$104.65	
FY94 AVG	2,866	20.7%	3,190	10,110	13,300	10,289	24,459	55,632	\$832,644	\$3,081,481	\$3,913,165	\$81.74	\$113.15	\$104.65	
FY95 TOT	34,374		37,781	118,114	155,895	145,549	300,636	751,406	\$9,407,571	\$41,280,660	\$50,688,231	\$81.74	\$113.15	\$104.65	
FY95 AVG	2,864	19.7%	3,148	9,843	12,991	12,129	27,553	62,867	\$800,614	\$3,440,055	\$4,240,669	\$81.74	\$113.15	\$104.65	
FY96 TOT	34,526		35,628	109,144	144,772	169,731	353,960	792,096	\$8,897,232	\$41,460,964	\$50,358,196	\$81.74	\$113.15	\$104.65	
FY96 AVG	2,877	18.8%	3,269	9,093	12,362	14,144	29,497	66,008	\$7,444,478	\$3,421,747	\$4,166,225	\$81.74	\$113.15	\$104.65	
FY97 TOT	28,891		30,225	91,990	122,215	185,866	335,713	721,573	\$7,382,199	\$32,199,416	\$39,581,615	\$81.74	\$113.15	\$104.65	
FY97 AVG	2,408	19.3%	2,519	7,665	10,184	15,489	27,976	60,214	\$6,151,183	\$2,883,201	\$3,534,384	\$81.74	\$113.15	\$104.65	
FY98 TOT	29,008		25,699	82,579	108,277	41,168	325,114	702,941	\$6,346,318	\$28,808,570	\$35,154,888	\$76.93	\$111.34	\$102.84	
FY98 AVG	2,417	21.3%	2,142	6,877	9,184	3,431	27,093	56,578	\$528,852	\$2,334,040	\$2,862,892	\$76.93	\$111.34	\$102.84	
FY99 TOT	29,491		19,835	64,402	84,237	60,832	332,459	705,927	\$4,948,834	\$22,659,322	\$27,608,156	\$76.79	\$111.34	\$105.13	
FY99 AVG	2,458	20.5%	1,653	5,247	6,900	5,069	17,765	56,827	\$4,152,403	\$1,888,277	\$2,340,680	\$76.79	\$111.34	\$105.13	
FY00 TOT	28,605		14,463	45,891	60,354	66,287	337,230	716,239	\$3,510,286	\$19,081,999	\$22,592,285	\$77.67	\$121.65	\$111.57	\$173.28
FY00 AVG	2,384	34.7%	1,207	3,824	5,031	7,197	26,111	59,694	\$2,914,441	\$1,882,782	\$1,874,223	\$77.67	\$121.65	\$111.57	\$173.28
FY01 TOT	40,186		19,711	55,010	74,721	141,392	370,234	857,274	\$5,186,481	\$21,395,624	\$26,582,105	\$94.05	\$132.76	\$122.95	\$399.43
FY01 AVG	3,349	45.0%	1,643	4,584	6,227	11,783	38,853	71,440	\$4,321,207	\$1,999,635	\$2,221,842	\$94.05	\$132.76	\$122.95	\$399.43

\*Starting in FY98, CHAP was removed from estimate (6) to separate TANF Med Only and CHAP. Column (15) added starting Fiscal Year 2000.

TOTAL TANF CASH CUMULATIVE TOTAL  
ANNUAL REPORT FY02 - FY10

YEAR	GRANTS PAID WITH PUBLIC HOUSING		GRANTS PAID WITHOUT PUBLIC HOUSING		TOTAL GRANTS PAID		CASE ADULT	CHILD	RECIPIENT	AVG FAM SIZE	TOTAL GRANTS WITH PUBLIC HOUSING	TOTAL GRANTS WITHOUT PUBLIC HOUSING	TOTAL GRANTS PAID	AVG GRANT PER RECIPIENT WITH PH	AVG GRANT PER RECIPIENT W/O PH	AVG GRANT PER RECIPIENT FAMILY			
	CASE	ADULT	ADULT	CHILD	CHILD	RECIPIENT													
FY02 TOT	29,884	22,971	62,897	85,068	105,090	73,091	187,545	246,636	134,974	96,062	249,642	345,704	\$4,125,420	\$3,865,067	\$41,990,487	\$95.70	\$130.92	\$122.10	\$311.00
FY02 AVG	2,490	1,914	5,175	7,089	8,758	6,091	15,629	21,720	11,248	8,005	20,804	28,809	\$677,118	\$2,832,089	\$3,499,207				
FY03 TOT	30,874	22,894	65,561	88,455	115,203	77,724	206,225	283,949	146,177	100,618	271,786	372,404	\$8,609,713	\$3,468,562	\$46,468,562	\$97.47	\$133.46	\$124.91	\$317.96
FY03 AVG	2,573	1,908	5,463	7,371	9,609	6,477	17,185	23,662	12,181	8,385	22,649	31,034	\$717,476	\$3,154,904	\$3,872,280				
FY04 TOT	26,910	16,957	54,631	71,588	92,407	58,788	169,091	227,879	118,317	75,745	223,722	299,467	\$7,489,393	\$3,014,782	\$37,631,175	\$105.03	\$132.34	\$125.80	\$318.18
FY04 AVG	2,159	1,413	4,533	5,966	7,701	4,899	14,091	19,990	9,860	6,312	18,644	24,956	\$624,166	\$2,511,815	\$3,134,931				
FY05 TOT	21,996	12,427	45,372	57,799	83,337	50,557	152,616	203,173	105,333	62,984	197,988	260,972	\$6,688,335	\$2,761,959	\$34,307,844	\$116.02	\$136.00	\$131.56	\$325.80
FY05 AVG	1,833	1,036	3,781	4,817	6,945	4,213	12,718	16,931	8,778	5,249	16,499	21,748	\$557,261	\$1,301,626	\$2,858,987				
FY06 TOT	19,388	10,497	38,907	49,404	77,364	46,650	142,510	189,160	96,752	57,167	181,417	218,564	\$5,985,992	\$2,629,352	\$32,015,344	\$221.28	\$137.65	\$134.26	\$330.95
FY06 AVG	1,616	875	3,242	4,117	6,447	3,888	11,876	15,763	3,063	4,762	15,118	19,880	\$498,833	\$2,169,113	\$2,667,945				
FY07 TOT	17,380	8,902	34,345	43,247	70,531	40,423	128,879	169,302	87,911	49,325	163,224	212,549	\$5,433,967	\$2,145,823	\$19,579,790	\$125.81	\$142.79	\$139.33	\$336.61
FY07 AVG	1,448	742	2,862	3,684	5,878	3,369	10,740	14,109	7,326	4,110	13,602	17,712	\$452,831	\$2,012,152	\$2,464,983				
FY08 TOT	19,989	11,671	39,554	51,225	80,029	53,259	147,778	201,037	100,018	64,930	187,332	252,262	\$6,352,187	\$2,748,744	\$34,190,931	\$124.03	\$138.73	\$135.70	\$342.11
FY08 AVG	1,666	973	3,296	4,269	6,669	4,438	12,315	16,753	8,335	5,411	15,611	21,022	\$529,349	\$2,319,895	\$2,840,244				
FY09 TOT	19,749	11,693	39,623	51,216	86,891	58,144	161,209	219,353	106,640	69,837	200,832	270,669	\$6,355,201	\$2,958,407	\$35,923,608	\$123.87	\$134.85	\$132.73	\$336.91
FY09 AVG	1,646	974	3,302	4,276	7,241	4,845	13,484	18,279	8,887	5,820	16,736	22,556	\$529,600	\$2,464,034	\$2,995,634				
FY10 TOT	20,878	12,314	41,670	54,984	114,757	81,986	212,026	294,022	135,635	95,300	243,706	349,006	\$6,683,900	\$3,053,122	\$44,756,022	\$221.60	\$129.46	\$128.21	\$329.48
FY10 AVG	1,740	1,110	3,473	4,582	9,563	6,832	17,670	24,302	11,303	7,942	21,142	29,084	\$556,992	\$3,171,010	\$3,728,002				

Note: New Aid Codes started Fiscal Year 2002. Applications not tracked starting Fiscal Year 2002. Source is same as monthly reports.

CHAF CASELOAD REPORT - ANNUAL SUMMARY  
AID CODE 47  
FY95 - FY99

YEAR	(1) APPS		(2) % APPS TO CASES	(3) CASES		(4) ADULTS		(5) CHILDREN		(6) RECIPIENTS		(7) MPP RETNO	(8) AVG FAM SIZE
	47	49		TOT	47	49	TOT	47	49	47	49		
FY95 TOT	257	257		24	24	5	19	24	24	24	364	364	1.00
FY95 AVG	64	64		6	6	1	5	6	6	6	30	30	1.00
FY96 TOT	567	567		335	335	146	262	408	408	408	1,062	1,062	1.22
FY96 AVG	47	47		28	28	12	22	34	34	34	89	89	1.22
FY97 TOT	992	992		740	740	329	737	1,066	1,066	1,066	2,017	2,017	1.44
FY97 AVG	83	83		62	62	27	61	89	89	89	168	168	1.44
FY98 TOT	1,189	1,189		781	781	333	801	1,134	1,134	1,134	1,733	1,733	1.45
FY98 AVG	99	99		65	65	28	67	95	95	95	146	146	1.45
FY99 TOT	1,591	1,591		931	931	365	1,046	1,411	1,411	1,411	2,332	2,332	1.25
FY99 AVG	133	133		78	78	30	87	118	118	118	213	213	1.25
FY90 TOT	3,267	3,267	74.1%	2,709	2,709	1,158	2,950	4,204	4,204	4,204	7,874	7,874	1.62
FY90 AVG	272	272		226	226	180	246	350	350	350	656	656	1.62
FY91 TOT	5,394	5,394	34.7%	4,630	4,630	1,975	7,188	10,306	10,306	10,306	17,104	17,104	1.62
FY91 AVG	450	450		369	369	1,075	599	864	864	864	1,784	1,784	1.62
FY92 TOT	6,891	6,891	18.1%	5,857	5,857	2,047	8,346	12,201	12,201	12,201	19,919	19,919	1.59
FY92 AVG	574	574		483	483	1,365	604	867	867	867	1,635	1,635	1.59
FY93 TOT	8,608	8,608	13.0%	7,377	7,377	3,106	10,676	15,054	15,054	15,054	24,416	24,416	1.58
FY93 AVG	717	717		605	605	2,085	762	1,066	1,066	1,066	2,146	2,146	1.58
FY94 TOT	10,360	10,360	13.9%	8,925	8,925	3,865	12,890	18,774	18,774	18,774	30,228	30,228	1.59
FY94 AVG	863	863		743	743	2,565	890	1,266	1,266	1,266	2,519	2,519	1.59
FY95 TOT	15,191	15,191	14.9%	13,213	13,213	4,909	18,122	25,031	25,031	25,031	41,071	41,071	1.64
FY95 AVG	1,266	1,266		1,101	1,101	3,257	1,496	2,086	2,086	2,086	3,424	3,424	1.64

NOTE: \*MPP rate eligible count of recipients from MPP Eligibility Report WL80737A.

CHAP CASELOAD REPORT - ANNUAL SUMMARY  
AID CODE 47/CH  
FY% - FY10

YEAR	(1) AFPS	(2) % AFPS TO CASES	(3) CASES	(4) ADULTS	(5) CHILDREN	(6) RECIPIENTS	(7) MFP RETR0	(8) AVG FAM SIZE
FY96 TOT	18,796		133,104	27,768	192,284	229,666	231,349	1.66
FY96 AVG	1,566	14.1%	11,100	2,314	16,625	19,389	20,940	
FY97 TOT	24,113		149,859	30,064	222,014	252,078	245,936	1.68
FY97 AVG	2,009	16.1%	12,488	1,695	18,501	21,807	22,716	
FY98 TOT	28,966		153,291	31,478	230,262	261,740	293,254	1.70
FY98 AVG	2,414	16.0%	12,799	1,653	19,189	21,912	24,934	
FY99 TOT	33,061		168,257	31,867	256,407	299,424	276,574	1.72
FY99 AVG	2,752	19.0%	14,046	1,756	21,567	24,121	27,213	
FY00 TOT	25,481		168,262	33,106	257,562	299,668	292,643	1.72
FY00 AVG	2,123	15.1%	14,017	1,759	21,464	24,322	25,064	
FY01 TOT	9,937		139,644	30,855	213,266	254,121	206,916	1.81
FY01 AVG	840	7.1%	11,636	1,571	18,606	21,177	22,291	
FY02 TOT	19,166		130,166	26,034	206,667	231,101	244,939	1.77
FY02 AVG	1,672		10,874	2,170	17,689	19,258	20,672	
FY03 TOT	24,113		149,817	29,166	237,371	266,237	282,295	1.78
FY03 AVG	2,009		12,468	2,431	19,781	22,231	22,273	
FY04 TOT	15,181		134,271	34,271	242,575	277,346	279,865	1.80
FY04 AVG	1,264		11,189	2,773	20,381	23,154	24,689	
FY05 TOT	15,435		135,435	30,448	233,663	263,911	271,623	1.83
FY05 AVG	1,285		11,285	2,571	19,689	22,689	24,791	
FY06 TOT	16,635		132,138	32,138	263,972	296,467	326,419	1.79
FY06 AVG	1,386		11,346	2,703	21,928	24,781	26,933	
FY07 TOT	17,545		132,215	32,215	272,912	306,637	344,084	1.75
FY07 AVG	1,461		11,179	2,727	22,743	26,870	29,624	
FY08 TOT	19,415		134,391	36,391	294,764	343,895	378,810	1.77
FY08 AVG	1,617		11,199	3,199	25,332	29,391	31,564	
FY09 TOT	25,445		147,040	47,040	333,389	479,429	519,960	1.85
FY09 AVG	2,120		12,260	3,910	28,382	39,202	42,323	
FY10 TOT	30,467		169,244	69,244	409,244	509,244	569,244	1.90
FY10 AVG	2,538		14,103	5,769	34,103	42,436	47,436	

NOTE: Metro through FY08 from WILMOTIA was 3 per other you need. FY09 & 2010 estimates.  
All case - all used for CHAP effective 9/1/10.  
Applications not included resulting FY10.

In Fiscal Year 2001, December 2000 was 343,200 (included 12,000) children on the Child Care Register. This included the Verbrug Family. Note.

\*NOTE:

AGED CASELOAD REPORT - ANNUAL SUMMARY  
FY83 - FY01

Year	(1) Apps Rec	(2) Total XIX Cases	(3) MPP Retro Cases	(4) NSWD Inst Cases	(5) Non Inst Cases	(6) SSI Cases	(7) Potential XIX SSI Cases	(8) Aged AGCF
FY83 TOT	2,255	52,308		16,928	35,380	39,172	4,726	2,970
FY83 AVG	188	4,359		1,411	2,948	3,264	394	248
FY84 TOT	1,998	51,676	56,064	16,367	35,309	39,127	4,299	2,890
FY84 AVG	167	4,306	4,672	1,364	2,942	3,261	358	241
FY85 TOT	1,726	52,533	56,605	16,020	36,513	41,004	4,804	3,022
FY85 AVG	144	4,378	4,717	1,335	3,043	3,417	400	252
FY86 TOT	1,560	53,710	58,132	15,524	38,186	42,702	4,943	3,056
FY86 AVG	130	4,476	4,844	1,294	3,182	3,559	412	255
FY87 TOT	1,624	55,019	60,241	16,314	38,705	44,445	5,944	3,096
FY87 AVG	135	4,585	5,020	1,360	3,225	3,704	495	258
FY88 TOT	1,692	56,751	59,350	16,241	40,510	45,481	5,117	3,328
FY88 AVG	141	4,729	4,946	1,353	3,376	3,790	426	277
FY89 TOT	2,112	60,039	63,193	16,376	43,663	44,879	2,562	3,512
FY89 AVG	176	5,003	5,266	1,365	3,639	3,740	214	293
FY90 TOT	2,651	63,443	68,555	15,721	46,058	47,521	2,571	3,552
FY90 AVG	221	5,287	5,713	1,310	3,838	3,960	214	296
FY91 TOT	2,558	67,740	72,039	16,973	50,767	50,039	2,725	3,471
FY91 AVG	213	5,645	6,003	1,414	4,231	4,170	227	289
FY92 TOT	2,618	70,487	74,347	17,553	52,934	52,746	3,556	3,386
FY92 AVG	218	5,874	6,196	1,463	4,411	4,396	296	282
FY93 TOT	3,160	74,180	79,251	16,919	57,261	56,633	4,477	3,560
FY93 AVG	263	6,182	6,604	1,410	4,772	4,719	373	297
FY94 TOT	2,983	80,618	85,106	16,563	64,055	61,438	4,019	3,960
FY94 AVG	249	6,718	7,092	1,380	5,338	5,120	335	330
FY95 TOT	3,135	86,146	90,802	15,902	70,244	66,001	3,348	4,122
FY95 AVG	261	7,179	7,567	1,325	5,854	5,500	279	344
FY96 TOT	3,076	90,398	95,249	16,394	74,004	22,791	943	1,396
FY96 AVG	256	7,533	7,937	1,366	6,167	5,698	236	349
FY97 TOT	3,251	91,951	96,367	15,284	76,667	75,823	6,706	
FY97 AVG	271	7,663	8,031	1,274	6,389	6,319	559	
FY98 TOT	3,627	92,498	97,639	15,017	77,481	76,922	7,208	
FY98 AVG	302	7,708	8,137	1,251	6,457	6,410	601	
FY99 TOT	4,244	94,710	99,558	14,243	80,467	79,348	7,199	
FY99 AVG	354	7,893	8,297	1,187	6,706	6,612	600	
FY00 TOT	4,488	97,825	102,692	14,684	83,141			
FY00 AVG	374	8,152	8,558	1,224	6,928			
FY01 TOT	5,070	98,607	103,179	15,000	83,607			
FY01 AVG	423	8,217	8,598	1,250	6,967			

NOTES: Retro through FY01 from WL80737A one year after year end.  
AGCF not available from U.S. Treasury Department starting FY97.  
SSI not available from U.S. Treasury Department starting FY00.

AGED CASELOAD REPORT - ANNUAL SUMMARY  
FY02 - FY10

Year	(1) Total XIX Cases	(2) MPP Retro Cases	(3) NSWD Inst Cases	(4) Non Inst Cases
FY02 TOT	103,170	107,024	15,661	87,509
FY02 AVG	8,598	8,919	1,305	7,292
FY03 TOT	108,173	111,491	15,376	92,797
FY03 AVG	9,014	9,291	1,281	7,733
FY04 TOT	113,545	117,860	15,265	98,280
FY04 AVG	9,462	9,822	1,272	8,190
FY05 TOT	118,326	121,502	15,371	102,955
FY05 AVG	9,861	10,125	1,281	8,580
FY06 TOT	122,885	125,336	15,030	107,855
FY06 AVG	10,240	10,445	1,253	8,988
FY07 TOT	126,996	129,755	14,464	112,532
FY07 AVG	10,583	10,814	1,205	9,378
FY08 TOT	131,955	133,444	15,213	116,742
FY08 AVG	10,996	11,120	1,268	9,729
FY09 TOT	133,984	136,164	15,683	118,301
FY09 AVG	11,165	11,347	1,307	9,858
FY10 TOT*	117,609	119,126	15,174	101,254
FY10 AVG*	9,801	9,927	1,265	8,438

**NOTES:** Retro through FY09 from WL80737A one year after year end. FY10 is R&S estimate.  
Applications not tracked starting FY02.

**\*NOTE:** Aged HCBW cases have been removed and will be tracked as a separate category starting with FY10.  
This explains steep decline in FY10 totals and averages.



BLIND CASELOAD REPORT - ANNUAL SUMMARY  
FY83 - FY01

Year	(1) Apps Rec	(2) Total XIX Cases	(3) MPP Retro Cases	(4) NSWD Inst Cases	(5) Non Inst Cases	(6) SSI Cases	(7) Potential XIX SSI Cases	(8) Aged AGCF
FY83 TOT	88	4,053		419	3,634	5,447	1,813	39
FY83 AVG	7	338		35	303	454	151	3
FY84 TOT	99	4,049	4,338	451	3,598	5,418	1,820	26
FY84 AVG	8	337	362	38	300	452	152	2
FY85 TOT	63	3,984	4,242	439	3,545	5,529	1,984	30
FY85 AVG	5	332	354	37	295	461	165	3
FY86 TOT	78	4,081	4,558	445	3,636	5,902	2,266	52
FY86 AVG	7	340	380	37	303	492	189	4
FY87 TOT	75	4,132	4,646	403	3,729	6,125	2,396	58
FY87 AVG	6	344	387	34	311	510	200	5
FY88 TOT	66	4,176	4,270	399	3,777	6,143	2,363	57
FY88 AVG	6	348	356	33	315	512	197	5
FY89 TOT	69	4,262	4,363	401	3,861	5,725	1,826	60
FY89 AVG	6	355	364	33	322	477	152	5
FY90 TOT	106	4,325	4,472	396	3,929	5,676	1,664	71
FY90 AVG	9	360	373	33	327	473	139	6
FY91 TOT	77	4,331	4,511	380	3,951	5,666	1,656	74
FY91 AVG	6	361	376	32	329	472	138	6
FY92 TOT	75	4,318	4,502	395	3,923	5,818	1,858	59
FY92 AVG	6	360	375	33	327	485	155	5
FY93 TOT	104	4,254	4,470	349	3,905	6,057	2,145	60
FY93 AVG	9	355	373	29	325	505	179	5
FY94 TOT	94	4,378	4,571	297	4,081	6,220	2,158	66
FY94 AVG	8	365	381	25	340	518	180	6
FY95 TOT	83	4,511	4,672	314	4,197	6,519	2,322	62
FY95 AVG	7	376	389	26	350	543	194	5
FY96 TOT	60	4,484	4,639	269	4,215	2,271	879	20
FY96 AVG	5	374	386	22	351	568	220	5
FY97 TOT	50	4,499	4,653	269	4,230	7,091	2,843	
FY97 AVG	4	375	388	22	353	591	237	
FY98 TOT	59	4,518	4,712	263	4,255	7,319	3,008	
FY98 AVG	5	377	393	22	355	610	251	
FY99 TOT	62	4,667	4,839	252	4,415	7,870	3,381	
FY99 AVG	5	389	403	21	368	656	282	
FY00 TOT	60	4,138	3,956	188	3,950			
FY00 AVG	5	345	330	16	329			
FY01 TOT	70	3,661	4,386	210	3,451			
FY01 AVG	6	305	366	18	288			

NOTES: Retro through FY01 from WL80737A one year after year end.  
AGCF not available from U.S. Treasury Department starting FY97  
SSI not available from U.S. Treasury Department starting FY00.

**BLIND CASELOAD REPORT - ANNUAL SUMMARY  
FY02 - FY10**

<b>Year</b>	<b>(1) Total XIX Cases</b>	<b>(2) MPP Retro Cases</b>	<b>(3) NSWD Inst Cases</b>	<b>(4) Non Inst Cases</b>
<b>FY02 TOT</b>	<b>3,662</b>	<b>4,492</b>	<b>210</b>	<b>3,452</b>
<b>FY02 AVG</b>	<b>305</b>	<b>374</b>	<b>18</b>	<b>288</b>
<b>FY03 TOT</b>	<b>3,902</b>	<b>3,976</b>	<b>184</b>	<b>3,718</b>
<b>FY03 AVG</b>	<b>325</b>	<b>331</b>	<b>15</b>	<b>310</b>
<b>FY04 TOT</b>	<b>4,072</b>	<b>4,211</b>	<b>195</b>	<b>3,877</b>
<b>FY04 AVG</b>	<b>339</b>	<b>351</b>	<b>16</b>	<b>323</b>
<b>FY05 TOT</b>	<b>4,128</b>	<b>4,239</b>	<b>186</b>	<b>3,942</b>
<b>FY05 AVG</b>	<b>344</b>	<b>353</b>	<b>16</b>	<b>329</b>
<b>FY06 TOT</b>	<b>4,253</b>	<b>4,334</b>	<b>177</b>	<b>4,076</b>
<b>FY06 AVG</b>	<b>354</b>	<b>361</b>	<b>15</b>	<b>340</b>
<b>FY07 TOT</b>	<b>4,439</b>	<b>4,507</b>	<b>172</b>	<b>4,267</b>
<b>FY07 AVG</b>	<b>370</b>	<b>376</b>	<b>14</b>	<b>356</b>
<b>FY08 TOT</b>	<b>4,387</b>	<b>4,455</b>	<b>187</b>	<b>4,200</b>
<b>FY08 AVG</b>	<b>366</b>	<b>371</b>	<b>16</b>	<b>350</b>
<b>FY09 TOT</b>	<b>4,568</b>	<b>4,620</b>	<b>207</b>	<b>4,361</b>
<b>FY09 AVG</b>	<b>381</b>	<b>385</b>	<b>17</b>	<b>363</b>
<b>FY10 TOT*</b>	<b>3,924</b>	<b>3,963</b>	<b>177</b>	<b>3,747</b>
<b>FY10 AVG*</b>	<b>327</b>	<b>330</b>	<b>15</b>	<b>312</b>

**NOTES:** Retro through FY09 from WL80737A one year after year end. FY10 is R&S estimate.  
Applications not tracked starting FY02.

**\*NOTE:** Blind HCBW cases have been removed and will be tracked as a separate category starting with FY10. This explains steep decline in FY10 totals and averages.

DISABLED CASELOAD REPORT - ANNUAL SUMMARY  
FY83 - FY01

Year	(1) Appx Rec	(2) Total XIX Cases	(3) MPP Retro Cases	(4) NSWD Inst Cases	(5) Non Inst Cases	(6) SSI Cases	(7) Potential XIX SSI Cases
FY83 TOT	4,161	31,709		4,972	26,737	15,640	6,703
FY83 AVG	347	2,642		414	2,228	2,970	559
FY84 TOT	3,620	34,117	39,024	4,983	29,134	39,379	8,000
FY84 AVG	302	2,843	3,252	415	2,428	3,282	667
FY85 TOT	3,371	38,838	43,077	4,888	33,950	41,802	7,673
FY85 AVG	281	3,237	3,590	407	2,829	3,650	639
FY86 TOT	3,175	42,955	47,962	5,159	37,796	47,953	8,067
FY86 AVG	265	3,580	3,997	430	3,150	3,996	672
FY87 TOT	3,520	46,966	52,187	5,252	41,714	52,128	8,126
FY87 AVG	293	3,914	4,349	438	3,476	4,344	677
FY88 TOT	3,512	51,199	57,409	5,337	45,862	57,431	9,888
FY88 AVG	293	4,267	4,784	445	3,822	4,786	824
FY89 TOT	4,265	56,370	63,630	5,540	50,830	61,829	9,021
FY89 AVG	355	4,698	5,303	462	4,236	5,152	752
FY90 TOT	6,348	62,631	71,864	5,840	56,572	69,002	10,513
FY90 AVG	529	5,219	5,989	487	4,714	5,750	876
FY91 TOT	7,456	70,028	82,149	5,910	64,118	76,779	11,562
FY91 AVG	621	5,836	6,846	493	5,343	6,398	964
FY92 TOT	9,342	82,729	98,745	6,286	76,443	89,587	12,776
FY92 AVG	779	6,894	8,229	524	6,370	7,466	1,065
FY93 TOT	10,480	99,492	115,898	6,303	93,189	108,955	16,853
FY93 AVG	873	8,291	9,658	525	7,766	9,080	1,404
FY94 TOT	12,271	115,579	134,126	5,895	109,684	130,334	22,471
FY94 AVG	1,023	9,632	11,177	491	9,140	10,861	1,873
FY95 TOT	15,107	135,409	155,782	5,872	129,537	151,100	23,953
FY95 AVG	1,259	11,284	12,982	489	10,795	12,592	1,996
FY96 TOT	15,183	154,364	175,091	6,154	148,210	54,275	7,766
FY96 AVG	1,265	12,864	14,591	513	12,351	13,569	1,942
FY97 TOT	15,047	163,275	181,434	6,380	156,895	179,586	25,888
FY97 AVG	1,254	13,606	15,120	532	13,075	14,966	2,157
FY98 TOT	15,199	167,730	188,430	6,554	161,184	184,676	27,397
FY98 AVG	1,267	13,978	15,703	546	13,432	15,390	2,283
FY99 TOT	15,690	180,310	201,304	6,789	173,521		
FY99 AVG	1,308	15,026	16,775	566	14,460		
FY00 TOT	13,870	191,794	212,482	7,400	184,394		
FY00 AVG	1,156	15,983	17,707	617	15,366		
FY01 TOT	13,099	209,579	232,224	7,394	202,185		
FY01 AVG	1,092	17,465	19,352	616	16,849		

NOTES: Retro through FY01 from WL80737A one year after year end.  
SSI not available from U.S. Treasury Department starting FY99.

**DISABLED CASELOAD REPORT - ANNUAL SUMMARY  
FY02 - FY10**

Year	(1) Total XIX Cases	(2) MPP Retro Cases	(3) NSWD Inst Cases	(4) Non Inst Cases
<b>FY02 TOT</b>	<b>229,651</b>	<b>252,577</b>	<b>7,635</b>	<b>222,016</b>
<b>FY02 AVG</b>	<b>19,138</b>	<b>21,048</b>	<b>636</b>	<b>18,501</b>
<b>FY03 TOT</b>	<b>247,225</b>	<b>268,782</b>	<b>8,020</b>	<b>239,205</b>
<b>FY03 AVG</b>	<b>20,602</b>	<b>22,399</b>	<b>668</b>	<b>19,934</b>
<b>FY04 TOT</b>	<b>263,109</b>	<b>292,247</b>	<b>8,153</b>	<b>254,956</b>
<b>FY04 AVG</b>	<b>21,926</b>	<b>24,354</b>	<b>679</b>	<b>21,246</b>
<b>FY05 TOT</b>	<b>276,855</b>	<b>296,977</b>	<b>8,495</b>	<b>268,360</b>
<b>FY05 AVG</b>	<b>23,071</b>	<b>24,748</b>	<b>708</b>	<b>22,363</b>
<b>FY06 TOT</b>	<b>281,159</b>	<b>299,059</b>	<b>8,474</b>	<b>272,685</b>
<b>FY06 AVG</b>	<b>23,430</b>	<b>24,922</b>	<b>706</b>	<b>22,724</b>
<b>FY07 TOT</b>	<b>286,163</b>	<b>305,618</b>	<b>8,412</b>	<b>277,751</b>
<b>FY07 AVG</b>	<b>23,847</b>	<b>25,469</b>	<b>701</b>	<b>23,146</b>
<b>FY08 TOT</b>	<b>298,343</b>	<b>316,320</b>	<b>8,811</b>	<b>289,532</b>
<b>FY08 AVG</b>	<b>24,862</b>	<b>26,360</b>	<b>734</b>	<b>24,128</b>
<b>FY09 TOT</b>	<b>310,158</b>	<b>328,980</b>	<b>8,787</b>	<b>301,371</b>
<b>FY09 AVG</b>	<b>25,847</b>	<b>27,415</b>	<b>732</b>	<b>25,114</b>
<b>FY10 TOT*</b>	<b>307,439</b>	<b>324,475</b>	<b>8,287</b>	<b>298,488</b>
<b>FY10 AVG*</b>	<b>25,620</b>	<b>27,040</b>	<b>691</b>	<b>24,874</b>

**NOTES:** Retro through FY09 from WL80737A one year after year end. FY10 is R&S estimate. Applications not tracked starting FY02.

**\*NOTE:** Disabled HCBW cases have been removed and will be tracked as a separate category starting with FY10. This explains steep decline in FY10 totals and averages.

MAABD CASELOAD REPORT - ANNUAL SUMMARY  
FY83 - FY01

Year	(1) Apps Rec	(2) Total XIX Cases	(3) MPP Retro Cases	(4) NSWD Inst Cases	(5) Non Inst Cases	(6) SSI Cases	(7) Potential XIX SSI Cases	(8) Aged AGCF
FY83 TOT	6,496	88,070		22,319	65,751	80,259	13,242	3,009
FY83 AVG	542	7,339		1,860	5,479	6,688	1,104	251
FY84 TOT	5,717	89,842	99,426	21,801	68,041	83,924	14,119	2,916
FY84 AVG	477	7,486	8,286	1,817	5,670	6,995	1,177	243
FY85 TOT	5,160	95,355	103,924	21,347	74,008	98,335	14,461	3,052
FY85 AVG	430	7,947	8,661	1,779	6,167	7,528	1,204	255
FY86 TOT	4,813	100,746	110,652	21,128	79,618	96,557	15,276	3,108
FY86 AVG	402	8,396	9,221	1,761	6,635	8,047	1,273	259
FY87 TOT	5,219	106,117	117,074	21,969	84,148	102,698	16,466	3,154
FY87 AVG	434	8,843	9,756	1,832	7,012	8,558	1,372	263
FY88 TOT	5,270	112,126	121,029	21,977	90,149	109,055	17,368	3,385
FY88 AVG	440	9,344	10,086	1,831	7,513	9,088	1,447	282
FY89 TOT	6,446	120,671	131,186	22,317	98,354	112,433	13,409	3,572
FY89 AVG	537	10,056	10,933	1,860	8,197	9,369	1,118	298
FY90 TOT	9,105	130,399	144,891	21,957	106,559	122,199	14,748	3,623
FY90 AVG	759	10,866	12,075	1,830	8,879	10,183	1,229	302
FY91 TOT	10,091	142,099	158,699	23,263	118,836	132,484	15,943	3,545
FY91 AVG	840	11,842	13,225	1,939	9,903	11,040	1,329	295
FY92 TOT	12,035	157,534	177,594	24,234	133,300	148,151	18,190	3,445
FY92 AVG	1,003	13,128	14,800	2,020	11,108	12,347	1,516	287
FY93 TOT	13,744	177,926	199,619	23,571	154,355	171,645	23,475	3,620
FY93 AVG	1,145	14,828	16,635	1,964	12,863	14,304	1,956	302
FY94 TOT	15,348	200,575	223,803	22,755	177,820	197,992	28,648	4,026
FY94 AVG	1,280	16,715	18,650	1,896	14,818	16,499	2,388	336
FY95 TOT	18,325	226,066	251,256	22,088	203,978	223,620	29,623	4,184
FY95 AVG	1,527	18,839	20,938	1,841	16,998	18,635	2,469	349
FY96 TOT	18,319	249,246	274,970	22,817	226,429	237,337	31,588	4,116
FY96 AVG	1,527	20,771	22,914	1,904	18,869	19,834	2,397	354
FY97 TOT	18,348	259,725	282,454	21,933	237,792	262,500	35,437	4,116
FY97 AVG	1,529	21,644	23,538	1,828	19,816	21,875	2,953	354
FY98 TOT	18,885	264,754	289,643	21,834	242,920	268,917	37,613	4,116
FY98 AVG	1,574	22,063	24,137	1,820	20,243	22,410	3,134	354
FY99 TOT	19,996	279,687	305,701	21,284	258,403	283,403	38,403	4,116
FY99 AVG	1,666	23,307	25,475	1,774	21,534	23,617	3,200	354
FY00 TOT	18,418	293,757	319,130	22,272	271,485	293,757	39,130	4,116
FY00 AVG	1,535	24,480	26,594	1,856	22,624	24,480	3,262	354
FY01 TOT	18,239	311,847	339,789	22,604	289,243	311,847	40,243	4,116
FY01 AVG	1,520	25,987	28,316	1,884	24,104	25,987	3,354	354

NOTES: Retro through FY01 from WL80737A one year after year end.  
AGCF not available from U.S. Treasury Department starting FY97.  
SSI not available from U.S. Treasury Department starting FY99 for Aged & Blind.  
SSI not available from U.S. Treasury Department starting FY00 for Disabled.

**MAABD CASELOAD REPORT - ANNUAL SUMMARY  
FY02 - FY10**

<b>Year</b>	<b>(1) Total XIX Cases</b>	<b>(2) MPP Retro Cases</b>	<b>(3) NSWD Inst Cases</b>	<b>(4) Non Inst Cases</b>
<b>FY02 TOT</b>	<b>336,483</b>	<b>364,093</b>	<b>23,506</b>	<b>312,977</b>
<b>FY02 AVG</b>	<b>28,040</b>	<b>30,341</b>	<b>1,959</b>	<b>26,081</b>
<b>FY03 TOT</b>	<b>359,300</b>	<b>384,249</b>	<b>23,580</b>	<b>335,720</b>
<b>FY03 AVG</b>	<b>29,942</b>	<b>32,021</b>	<b>1,965</b>	<b>27,977</b>
<b>FY04 TOT</b>	<b>380,726</b>	<b>414,318</b>	<b>23,613</b>	<b>357,113</b>
<b>FY04 AVG</b>	<b>31,727</b>	<b>34,527</b>	<b>1,968</b>	<b>29,759</b>
<b>FY05 TOT</b>	<b>399,309</b>	<b>422,718</b>	<b>24,052</b>	<b>375,257</b>
<b>FY05 AVG</b>	<b>33,276</b>	<b>35,227</b>	<b>2,004</b>	<b>31,271</b>
<b>FY06 TOT</b>	<b>408,297</b>	<b>428,729</b>	<b>23,681</b>	<b>384,616</b>
<b>FY06 AVG</b>	<b>34,025</b>	<b>35,727</b>	<b>1,973</b>	<b>32,051</b>
<b>FY07 TOT</b>	<b>417,598</b>	<b>439,880</b>	<b>23,048</b>	<b>394,550</b>
<b>FY07 AVG</b>	<b>34,800</b>	<b>36,659</b>	<b>1,921</b>	<b>32,879</b>
<b>FY08 TOT</b>	<b>434,685</b>	<b>454,219</b>	<b>24,211</b>	<b>410,474</b>
<b>FY08 AVG</b>	<b>36,224</b>	<b>37,852</b>	<b>2,018</b>	<b>34,206</b>
<b>FY09 TOT</b>	<b>448,710</b>	<b>469,764</b>	<b>24,677</b>	<b>424,033</b>
<b>FY09 AVG</b>	<b>37,393</b>	<b>39,147</b>	<b>2,056</b>	<b>35,336</b>
<b>FY10 TOT*</b>	<b>428,972</b>	<b>447,565</b>	<b>23,638</b>	<b>403,489</b>
<b>FY10 AVG*</b>	<b>35,748</b>	<b>37,297</b>	<b>1,970</b>	<b>33,624</b>

**NOTES:** Retro through FY09 from WL80737A one year after year end. FY10 is R&S estimate.  
Applications not tracked starting FY02.

**\*NOTE:** Aged, Blind & Disabled HCBW cases have been removed and will be tracked as a separate category starting with FY10. This explains steep decline in FY10 totals and averages.

HCBW (HOME & COMMUNITY BASED WAIVER) CASELOAD - ANNUAL SUMMARY

FY 10 -

FY	DWSS WIN HD1, HD3, HD9 Cases	DWSS CHIP HC1 Cases	DWSS WEARC HG1, HG3 Cases	DWSS AL AL1 Cases	DWSS MR/RC HR1, HR3, HR9 Cases	DWSS HCBW TOTAL Cases	DWSS MPP Retro
FY10 TOT	7,124	14,410	4,280	431	18,112	44,357	44,801
FY10 AVG	594	1,201	357	36	1,509	3,696	3,733

NOTE: DWSS HCBW CASES ARE FROM AFR56A MONTHLY AID CODE REPORT FOR THE CURRENT MONTH.

SOURCE: AFR56A, Total Cases for Aid Codes HD1, HD3, HD9, HC1, HG1, HG3, AL1, HR1, HR3, HR9.

NOTE: MPP retro is R&S estimate; FY10 = 1%.

WIN = Persons with Physical Disabilities

CHIP = Frail Elderly

WEARC = Elderly in Adult Residential Care

AL = Assisted Living

MR/RC = Persons with Mental Retardation and Related Conditions

QMB CASELOAD REPORT - ANNUAL SUMMARY  
FY89 - FY01

Year	(1) Aged		(2) Blind		(3) Disabled		(4) MAABD		(5) Retro
	Apps	Cases	Apps	Cases	Apps	Cases	Apps	Cases	Total
FY89 TOT	1,439	451	3	7	400	248	1,842	706	1,802
FY89 AVG	240	75	1	1	67	41	307	118	300
FY90 TOT	1,147	11,071	3	47	398	4,701	1,548	15,819	17,058
FY90 AVG	96	923	0	4	33	392	129	1,318	1,422
FY91 TOT	648	12,815	3	90	315	5,853	966	18,758	19,174
FY91 AVG	54	1,068	0	8	26	488	81	1,563	1,598
FY92 TOT	974	15,291	2	144	480	7,596	1,456	23,031	23,897
FY92 AVG	81	1,274	0	12	40	633	121	1,919	1,991
FY93 TOT	931	16,636	5	137	471	9,672	1,407	26,445	27,696
FY93 AVG	78	1,386	0	11	39	806	117	2,204	2,308
FY94 TOT	946	18,299	5	208	713	11,740	1,664	30,247	31,773
FY94 AVG	79	1,525	0	17	59	978	139	2,521	2,648
FY95 TOT	1,112	20,893	8	218	1,012	15,058	2,132	36,169	38,710
FY95 AVG	93	1,741	1	18	84	1,255	178	3,014	3,226
FY96 TOT	999	23,744	5	200	1,122	18,326	2,126	42,270	44,909
FY96 AVG	83	1,979	0	17	94	1,527	177	3,523	3,742
FY97 TOT	1,011	25,498	5	145	1,193	21,949	2,209	47,592	50,025
FY97 AVG	84	2,125	0	12	99	1,829	184	3,966	4,169
FY98 TOT	1,137	26,339	6	122	1,143	22,954	2,286	49,415	52,158
FY98 AVG	95	2,195	1	10	95	1,913	191	4,118	4,347
FY99 TOT	1,289	28,288	5	128	1,228	26,314	2,522	54,730	55,582
FY99 AVG	107	2,357	0	11	102	2,193	210	4,561	4,632
FY00 TOT	954	30,824	4	110	1,365	29,082	2,323	60,016	59,401
FY00 AVG	80	2,569	0	9	114	2,424	194	5,001	4,950
FY01 TOT	722	31,588	1	98	836	30,992	1,559	62,678	62,563
FY01 AVG	60	2,632	0	8	70	2,583	130	5,223	5,214

NOTES: Retro through FY01 from WL80737A one year after year end.



**QMB CASELOAD REPORT - ANNUAL SUMMARY  
FY02 - FY10**

<b>Year</b>	<b>(1) Aged Cases</b>	<b>(2) Blind Cases</b>	<b>(3) Disabled Cases</b>	<b>(4) MAABD Cases</b>	<b>(5) Retro Total</b>
<b>FY02 TOT</b>	<b>33,321</b>	<b>85</b>	<b>33,514</b>	<b>66,920</b>	<b>66,789</b>
<b>FY02 AVG</b>	<b>2,777</b>	<b>7</b>	<b>2,793</b>	<b>5,577</b>	<b>5,566</b>
<b>FY03 TOT</b>	<b>40,139</b>	<b>125</b>	<b>38,119</b>	<b>78,383</b>	<b>77,244</b>
<b>FY03 AVG</b>	<b>3,345</b>	<b>10</b>	<b>3,177</b>	<b>6,532</b>	<b>6,437</b>
<b>FY04 TOT</b>	<b>47,965</b>	<b>169</b>	<b>42,559</b>	<b>90,693</b>	<b>92,524</b>
<b>FY04 AVG</b>	<b>3,997</b>	<b>14</b>	<b>3,547</b>	<b>7,558</b>	<b>7,710</b>
<b>FY05 TOT</b>	<b>43,901</b>	<b>219</b>	<b>44,716</b>	<b>88,836</b>	<b>88,914</b>
<b>FY05 AVG</b>	<b>3,658</b>	<b>18</b>	<b>3,726</b>	<b>7,403</b>	<b>7,410</b>
<b>FY06 TOT</b>	<b>39,531</b>	<b>200</b>	<b>43,389</b>	<b>83,120</b>	<b>82,741</b>
<b>FY06 AVG</b>	<b>3,294</b>	<b>17</b>	<b>3,616</b>	<b>6,927</b>	<b>6,895</b>
<b>FY07 TOT</b>	<b>40,998</b>	<b>203</b>	<b>44,347</b>	<b>85,548</b>	<b>85,054</b>
<b>FY07 AVG</b>	<b>3,417</b>	<b>17</b>	<b>3,696</b>	<b>7,129</b>	<b>7,088</b>
<b>FY08 TOT</b>	<b>44,056</b>	<b>186</b>	<b>47,843</b>	<b>92,085</b>	<b>91,131</b>
<b>FY08 AVG</b>	<b>3,671</b>	<b>16</b>	<b>3,987</b>	<b>7,674</b>	<b>7,594</b>
<b>FY09 TOT</b>	<b>48,537</b>	<b>235</b>	<b>53,314</b>	<b>102,086</b>	<b>101,172</b>
<b>FY09 AVG</b>	<b>4,045</b>	<b>20</b>	<b>4,443</b>	<b>8,507</b>	<b>8,431</b>
<b>FY10 TOT</b>	<b>50,923</b>	<b>219</b>	<b>58,336</b>	<b>109,478</b>	<b>109,478</b>
<b>FY10 AVG</b>	<b>4,244</b>	<b>18</b>	<b>4,861</b>	<b>9,123</b>	<b>9,123</b>

**NOTES:** Retro through FY09 from WL80737A one year after year end. FY10 is R&S estimate.  
Applications not tracked starting FY02.

TOTAL SLMB WITH Q1 & Q3 CASELOAD REPORT - ANNUAL SUMMARY  
FY94 - 10

Year	AGED		BLIND		DISABLED		SLMB	
	Apps	Cases	Apps	Cases	Apps	Cases	Apps	Cases
FY94 TOT	195	1,460	1	24	89	644	285	2,118
FY94 AVG	16	122	0	2	7	54	24	177
FY95 TOT	346	3,422	0	43	151	1,557	497	5,022
FY95 AVG	29	285	0	4	13	130	41	419
FY96 TOT	420	7,237	2	58	250	4,094	672	11,389
FY96 AVG	35	603	0	5	21	341	56	949
FY97 TOT	321	9,425	3	82	201	5,828	525	15,335
FY97 AVG	27	785	0	7	17	486	44	1,278
FY98 TOT	267	11,270	1	81	182	7,189	450	18,540
FY98 AVG	22	939	0	7	15	599	38	1,545
FY99 TOT	369	14,447	3	114	197	9,297	569	23,858
FY99 AVG	31	1,204	0	10	16	775	47	1,988
FY00 TOT	876	16,666	6	130	365	11,111	1,247	27,907
FY00 AVG	73	1,389	1	11	30	926	104	2,316
FY01 TOT	697	22,030	2	131	593	16,340	1,292	38,501
FY01 AVG	58	1,836	0	11	49	1,362	108	3,208
FY02 TOT		25,541		136		19,867		45,544
FY02 AVG		2,128		11		1,657		3,796
FY03 TOT#		31,695		116		22,248		54,059
FY03 AVGH		2,641		10		1,854		4,505
FY04 TOT		36,166		103		23,410		59,679
FY04 AVG		3,014		9		1,951		4,973
FY05 TOT		37,862		95		25,323		63,280
FY05 AVG		3,155		8		2,110		5,273
FY06 TOT		40,564		134		26,865		67,563
FY06 AVG		3,380		11		2,239		5,630
FY07 TOT		44,161		166		29,725		74,052
FY07 AVG		3,680		14		2,477		6,171
FY08 TOT		46,108		197		32,887		79,192
FY08 AVG		3,842		16		2,741		6,599
FY09 TOT		48,583		195		36,074		84,852
FY09 AVG		4,049		16		3,006		7,071
FY10 TOT		51,966		236		41,631		93,833
FY10 AVG		4,331		20		3,469		7,819

Note: Applications not tracked starting FY02.

#Note: Q3 benefits terminated December 2002.

**HEALTH INSURANCE WORK ADVANCEMENT PROGRAM  
CASELOAD REPORT - ANNUAL SUMMARY  
AID CODE WY9  
FY05 - FY10**

<b>Year</b>	<b>Cases</b>	<b>Disabled WY9</b>	<b>MPP Retro</b>
<b>FY05 TOT</b>	<b>86</b>		<b>117</b>
<b>FY05 AVG</b>	<b>7</b>		<b>10</b>
<b>FY06 TOT</b>	<b>250</b>		<b>278</b>
<b>FY06 AVG</b>	<b>21</b>		<b>23</b>
<b>FY07 TOT</b>	<b>245</b>		<b>254</b>
<b>FY07 AVG</b>	<b>20</b>		<b>21</b>
<b>FY08 TOT</b>	<b>298</b>		<b>336</b>
<b>FY08 AVG</b>	<b>25</b>		<b>28</b>
<b>FY09 TOT</b>	<b>197</b>		<b>204</b>
<b>FY09 AVG</b>	<b>16</b>		<b>17</b>
<b>FY10 TOT</b>	<b>151</b>		<b>151</b>
<b>FY10 AVG</b>	<b>13</b>		<b>13</b>

**NOTE:** New program; started in FY05.

**Source:** Retro through FY09 from WL80737A one year after year end. FY10 is R&S estimate.

**COUNTY MATCH CASELOAD REPORT - ANNUAL SUMMARY  
FY90 - FY01**

Year	Aged		Blind		Disabled		MAABD		MPP
	Apps	Cases	Apps	Cases	Apps	Cases	Apps	Cases	Retro Total
<b>FY90 TOT</b>	473	1,664	2	0	51	219	526	1,883	2,226
<b>FY90 AVG</b>	68	238	0	0	7	31	75	269	318
<b>FY91 TOT</b>	338	3,728	0	0	39	429	3,777	4,157	5,075
<b>FY91 AVG</b>	28	3,111	0	0	3	36	31	346	423
<b>FY92 TOT</b>	453	5,251	1	5	55	564	509	5,820	7,320
<b>FY92 AVG</b>	38	438	0	0	5	47	42	485	610
<b>FY93 TOT</b>	439	6,701	0	2	64	777	503	7,480	9,129
<b>FY93 AVG</b>	37	558	0	0	5	65	42	623	761
<b>FY94 TOT</b>	545	8,296	0	12	76	1,000	621	9,308	11,114
<b>FY94 AVG</b>	45	691	0	1	6	83	52	776	926
<b>FY95 TOT</b>	676	9,829	1	10	87	1,078	764	10,917	12,685
<b>FY95 AVG</b>	56	819	0	1	7	90	64	910	1,057
<b>FY96 TOT</b>	754	9,131	1	5	112	967	867	10,103	12,086
<b>FY96 AVG</b>	63	761	0	0	9	81	72	842	1,007
<b>FY97 TOT</b>	715	9,952	0	8	94	989	809	10,949	13,171
<b>FY97 AVG</b>	60	829	0	1	8	82	67	912	1,098
<b>FY98 TOT</b>	593	9,728	0	0	65	1,065	658	10,793	12,858
<b>FY98 AVG</b>	49	811	0	0	5	89	55	899	1,072
<b>FY99 TOT</b>	706	10,351	1	7	102	1,081	809	11,439	13,742
<b>FY99 AVG</b>	59	863	0	1	9	90	67	953	1,145
<b>FY00 TOT</b>	736	10,791	1	15	83	1,155	820	11,961	14,379
<b>FY00 AVG</b>	61	899	0	1	7	96	68	997	1,198
<b>FY01 TOT</b>	440	11,783	0	11	38	1,250	478	13,044	15,706
<b>FY01 AVG</b>	37	982	0	1	3	104	40	1,087	1,309

Source: Retro through FY01 from WL80737A one year after year end.

**COUNTY MATCH CASELOAD REPORT - ANNUAL SUMMARY**

**FY02 - FY10**

Year	Aged	Blind	Disabled	MAABD	MPP
	Cases	Cases	Cases	Cases	Retro Total
<b>FY02 TOT</b>	12,598	0	1,335	13,933	16,076
<b>FY02 AVG</b>	1,050	0	111	1,161	1,340
<b>FY03 TOT</b>	12,970	0	1,439	14,409	16,477
<b>FY03 AVG</b>	1,081	0	120	1,201	1,373
<b>FY04 TOT</b>	12,480	0	1,685	14,165	16,750
<b>FY04 AVG</b>	1,040	0	140	1,180	1,396
<b>FY05 TOT</b>	12,858	0	1,887	14,745	16,906
<b>FY05 AVG</b>	1,072	0	157	1,229	1,409
<b>FY06 TOT</b>	13,300	0	1,949	15,256	17,795
<b>FY06 AVG</b>	1,108	0	162	1,271	1,483
<b>FY07 TOT</b>	13,276	26	2,113	15,415	17,616
<b>FY07 AVG</b>	1,106	2	176	1,285	1,468
<b>FY08 TOT</b>	12,812	25	2,289	15,126	17,023
<b>FY08 AVG</b>	1,068	2	191	1,261	1,419
<b>FY09 TOT</b>	13,037	35	2,269	15,341	17,100
<b>FY09 AVG</b>	1,086	3	189	1,278	1,425
<b>FY10 TOT</b>	12,326	26	2,212	14,564	16,312
<b>FY10 AVG</b>	1,027	2	184	1,214	1,359

**Source:** Retro through FY09 from WL80737A one year after year end. FY10 is R&S estimate.

**Note:** Applications not tracked starting FY02.

CHILD WELFARE CASELOAD REPORT - ANNUAL SUMMARY  
FY 83 - FY94

Year	(1) FIC Reg	(2) FIC Inst	(3) FIC Purch Srv	(4) AFDC FC	(5) ARDC FC Inst	(6) FIC Med Frag	(7) FIC Thera- peutic	(8) FIC ED Clients	(9) CW XIX Total	(10) MPP Retro Recips	(11) Total Payment Cases	(12) TotPay Retro Cases
FY83 TOT	4,321	731	454	2,629	86	0		8,221	N/A			
FY83 AVG	360	61	38	219	7	0		685	N/A			
FY84 TOT	4,949	808	569	2,650	102	0		9,978	17,317			
FY84 AVG	412	67	47	221	9	0		757	943			
FY85 TOT	5,742	977	573	2,510	97	0		9,899	22,157			
FY85 AVG	479	81	48	209	8	0		825	1,013			
FY86 TOT	6,774	858	793	2,380	101	0		10,906	14,717			
FY86 AVG	565	72	66	198	8	0		909	1,226			
FY87 TOT	7,212	1,137	897	3,529	139	0		12,914	17,293			
FY87 AVG	601	95	75	294	12	0		1,076	1,441			
FY88 TOT	7,244	1,265	809	4,164	178	0		13,660	18,629			
FY88 AVG	604	105	67	347	15	0		1,138	1,552			
FY89 TOT	7,052	1,569	1,248	4,868	258	0		14,995	20,220			
FY89 AVG	588	131	104	406	22	0		1,250	1,685			
FY90 TOT	6,945	1,883	1,174	5,373	221	0		15,596	20,473			
FY90 AVG	579	157	98	448	18	0		1,300	1,706			
FY91 TOT	7,088	1,791	1,592	5,521	245	0		16,237	21,711			
FY91 AVG	591	149	133	460	20	0		1,353	1,811			
FY92 TOT	7,010	1,427	1,595	5,735	256	94	285	0	16,402	23,177	16,710	
FY92 AVG	584	119	133	478	21	8	24	0	1,367	1,931	1,393	
FY93 TOT	6,138	869	3,174	6,402	519	212	369	0	17,683	25,039	17,925	
FY93 AVG	512	72	265	534	43	18	31	0	1,474	2,087	1,494	
FY94 TOT	5,323	2,602	830	6,487	1,312	234	314	0	17,102	26,884	17,477	
FY94 AVG	444	217	69	541	109	20	26	0	1,425	2,174	1,456	

CHILD WELFARE CASELOAD REPORT - ANNUAL SUMMARY  
FY 95 - FY10

	XIX						MPP	Non-XIX	
	Aid Code 20s	Aid Code 50s	Aid Code 60s	Aid Code 61	NSWD Aid Code 60s w/o 61	Aid Code 85	Tot CW XIX	Retro	Aid Codes 68 + 70s
FY95 TOT	1,265	11,187	17,375	N/A	17,375	0	29,767	32,668	1,905
FY95 AVG	100	932	1,448	N/A	1,448	0	2,481	2,722	84
FY96 TOT	1,190	12,836	18,563	2,017	16,546	0	32,589	34,098	965
FY96 AVG	99	1,070	1,547	168	1,379	0	2,716	2,842	80
FY97 TOT	953	13,932	18,036	3,261	14,775	4	32,925	34,791	1,039
FY97 AVG	79	1,161	1,503	272	1,231	0	2,744	2,899	87
FY98 TOT	545	23,245	16,766	3,364	13,402	18	40,574	40,381	2,709
FY98 AVG	45	1,937	1,397	280	1,117	2	3,381	3,365	226
FY99 TOT	103	28,544	14,651	2,927	11,724	50	43,348	41,586	3,484
FY99 AVG	9	2,379	1,221	244	977	4	3,612	3,466	290
FY00 TOT	118	29,948	16,019	3,992	12,027	167	46,152	42,803	3,488
FY00 AVG	10	2,496	1,335	333	1,002	14	3,854	3,567	291
FY01 TOT	96	28,598	19,329	4,891	14,438	85	48,108	45,982	3,278
FY01 AVG	8	2,383	1,611	408	1,203	7	4,009	3,832	273
FY02 TOT	141	27,223	23,978	6,559	17,419	200	51,542	51,622	3,697
FY02 AVG	12	2,269	1,998	547	1,452	17	4,295	4,302	308
FY03 TOT	338	31,654	27,378	9,553	17,825	448	59,818	59,334	3,654
FY03 AVG	28	2,638	2,282	796	1,485	37	4,985	4,945	305
FY04 TOT	1,983	32,285	26,340	7,281	19,059	448	61,056	60,620	1,411
FY04 AVG	165	2,690	2,195	607	1,588	37	5,088	5,052	118
FY05 TOT	4,082	37,742	32,988	7,105	25,883	439	75,251	70,638	1,222
FY05 AVG	340	3,145	2,749	592	2,157	37	6,271	5,887	102
FY06 TOT	6,561	42,854	37,879	7,863	30,016	318	87,612	83,405	1,134
FY06 AVG	547	3,571	3,157	655	2,501	27	7,301	6,950	95
FY07 TOT	5,569	43,271	36,795	5,388	31,407	527	86,162	83,956	328
FY07 AVG	464	3,606	3,066	449	2,617	44	7,180	6,996	27
FY08 TOT	5,514	46,763	40,294	5,239	35,055	903	93,474	89,908	420
FY08 AVG	460	3,897	3,358	437	2,921	75	7,790	7,492	35
FY09 TOT	5,517	47,139	41,128	5,235	35,893	1,179	94,963	90,408	464
FY09 AVG	460	3,928	3,427	436	2,991	98	7,914	7,534	39
FY10 TOT	6,207	36,004	53,430	5,913	47,517	1,322	96,963	96,963	740
FY10 AVG	517	3,000	4,453	493	3,960	110	8,080	8,080	62

NOTES: Prior to 12/95, Aid Code 61 was counted as part of Aid Code 62.

Retro through FY09 from WL80737A one year after year end. FY10 is R&S estimate.

SUPPLEMENTAL NUTRITION ASSISTANCE PROGRAM (SNAP) REPORT - ANNUAL SUMMARY  
AFTER RECONCILIATION  
FYS - FY1

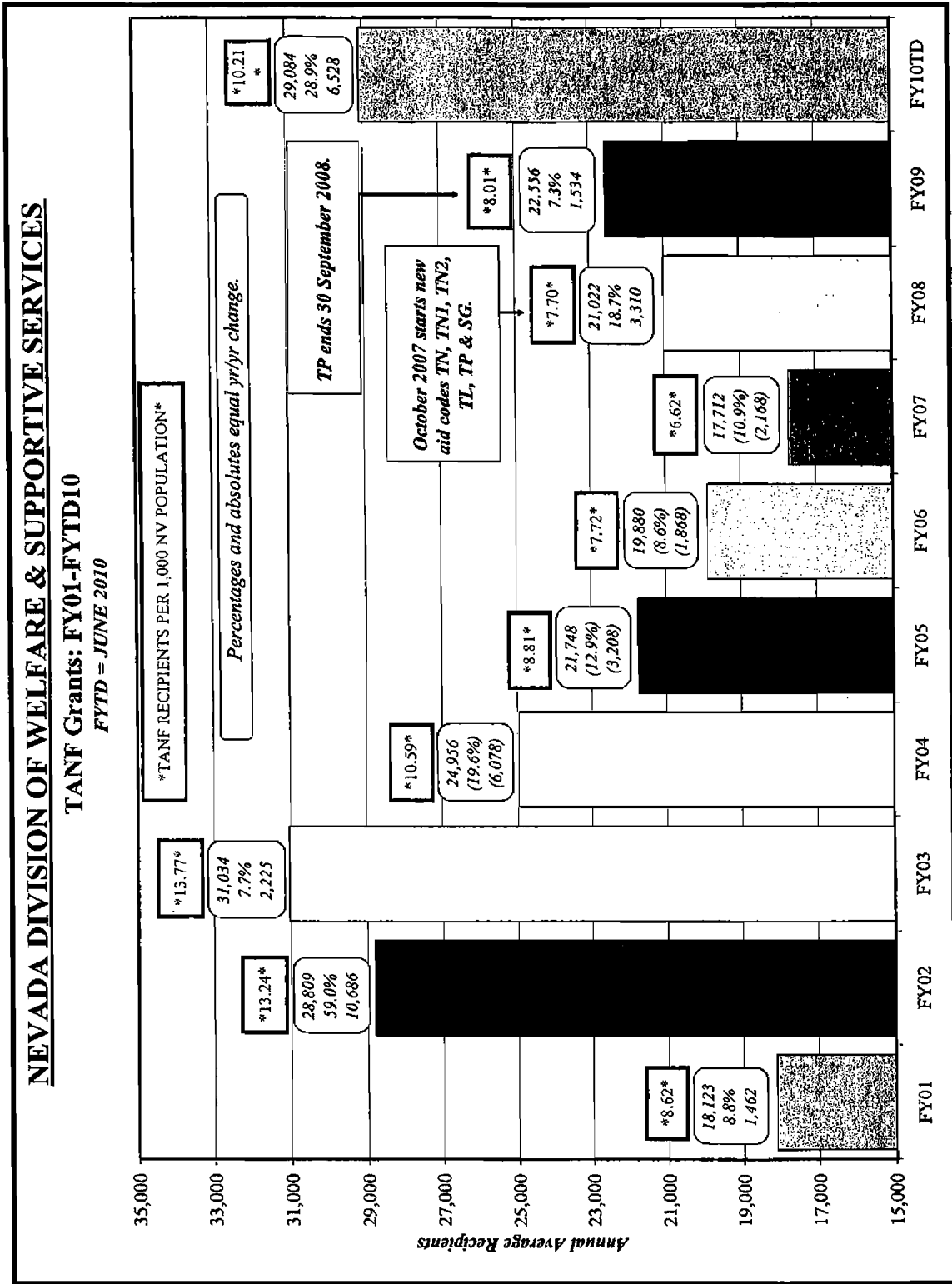
Year	(1) APPS RECEIVED		TOTAL	(2) APPS PROCESSED		TOTAL	(3) AUTHORIZED CASES		TOTAL	(4) PARTICIPATING CASES		TOTAL	(5) PARTICIPATING PERSONS		AVG FAMILY SIZE	PA NA TOT	(6) VALUE	(7) AVG PER CASE	(8) AVG PER PERSON	(9) DIR RET	(10) TOT RET
	PA	NA		PA	NA		PA	NA		PA	NA		PA	NA							
FY05 TOT	4,187	44,412	48,599	38,178	185,170	223,348	37,531	145,125	182,656	14,404	80,634	95,038	30,213	37,270	3.1	2.1	\$11,822,893	\$54.30	451	5,441	
FY05 AVG	346	3,618	3,964	2,346	12,110	14,456	2,294	12,110	14,404	1,404	7,076	8,480	25,214	29,270	3.1	2.1	\$11,822,893	\$54.30	451	5,441	
FY06 TOT	3,909	42,669	46,578	33,015	158,115	191,130	31,622	127,607	159,229	14,969	33,865	48,834	30,654	40,179	3.1	2.0	\$11,818,915	\$54.51	545	6,541	
FY06 AVG	326	3,556	3,882	2,751	13,178	15,929	2,652	12,317	14,969	1,496	33,865	40,179	33,865	33,865	3.1	2.0	\$11,818,915	\$54.51	545	6,541	
FY07 TOT	4,227	42,615	46,842	35,812	165,119	200,931	34,876	158,138	193,014	16,400	33,266	49,666	32,541	43,265	3.1	2.8	\$11,809,799	\$56.31	546	6,546	
FY07 AVG	352	3,551	3,903	2,984	14,010	16,994	2,906	12,203	16,109	1,609	36,172	43,265	32,541	43,265	3.1	2.8	\$11,809,799	\$56.31	546	6,546	
FY08 TOT	4,122	42,940	47,062	38,173	167,842	206,015	37,129	156,677	193,806	16,400	33,266	49,666	32,541	43,265	3.1	2.9	\$11,801,208	\$57.14	582	6,985	
FY08 AVG	344	3,578	3,922	3,181	13,987	17,168	3,094	13,366	16,400	1,640	33,266	49,666	32,541	43,265	3.1	2.9	\$11,801,208	\$57.14	582	6,985	
FY09 TOT	4,051	43,941	47,992	37,802	183,319	221,121	45,761	171,214	216,975	14,476	18,252	32,728	33,707	47,859	3.1	1.9	\$11,771,711	\$56.26	928	11,125	
FY09 AVG	338	3,662	4,000	3,084	15,215	18,219	3,814	14,476	18,252	1,825	18,252	32,728	33,707	47,859	3.1	1.9	\$11,771,711	\$56.26	928	11,125	
FY10 TOT	6,038	54,091	60,129	59,145	234,085	293,230	54,791	206,092	259,883	19,145	14,145	33,290	49,832	57,627	3.1	2.0	\$11,759,588	\$56.52	1,076	12,912	
FY10 AVG	503	4,507	5,009	4,928	19,507	24,519	4,586	17,091	21,667	1,614	14,145	33,290	49,832	57,627	3.1	2.0	\$11,759,588	\$56.52	1,076	12,912	
FY11 TOT	9,360	74,649	84,009	85,913	328,219	414,132	69,770	259,924	328,694	18,311	18,311	36,622	53,945	62,872	3.1	2.1	\$9,900,549	\$57.00	1,288	15,200	
FY11 AVG	780	6,220	6,999	7,159	27,353	34,511	5,804	20,911	25,975	1,524	14,145	33,290	49,832	57,627	3.1	2.1	\$9,900,549	\$57.00	1,288	15,200	
FY12 TOT	11,550	94,181	105,731	105,304	348,996	454,300	74,593	292,706	464,299	17,868	17,868	35,736	53,604	62,872	3.1	2.1	\$7,010,710	\$57.00	1,470	17,670	
FY12 AVG	963	7,848	8,811	8,775	29,032	37,858	6,216	24,376	38,691	1,524	14,145	33,290	49,832	57,627	3.1	2.1	\$7,010,710	\$57.00	1,470	17,670	
FY13 TOT	11,376	104,925	116,301	113,965	358,160	472,125	84,845	312,116	496,961	17,868	17,868	35,736	53,604	62,872	3.1	2.1	\$5,664,104	\$57.17	1,699	20,695	
FY13 AVG	948	8,744	9,692	9,497	29,179	39,352	7,071	25,975	41,403	1,614	14,145	33,290	49,832	57,627	3.1	2.1	\$5,664,104	\$57.17	1,699	20,695	
FY14 TOT	12,989	111,865	124,854	124,854	398,844	523,688	91,895	357,085	549,979	17,868	17,868	35,736	53,604	62,872	3.1	2.1	\$6,977,332	\$56.95	1,968	23,685	
FY14 AVG	1,082	9,321	10,403	10,403	33,209	43,740	7,658	29,675	45,740	1,524	14,145	33,290	49,832	57,627	3.1	2.1	\$6,977,332	\$56.95	1,968	23,685	
FY15 TOT	14,059	112,218	126,277	126,277	398,772	523,688	91,895	357,085	549,979	17,868	17,868	35,736	53,604	62,872	3.1	2.1	\$6,977,332	\$56.95	1,968	23,685	
FY15 AVG	1,172	9,352	10,523	10,523	33,209	43,740	7,658	29,675	45,740	1,524	14,145	33,290	49,832	57,627	3.1	2.1	\$6,977,332	\$56.95	1,968	23,685	
FY16 TOT	13,600	113,683	127,283	127,283	398,772	523,688	91,895	357,085	549,979	17,868	17,868	35,736	53,604	62,872	3.1	2.1	\$6,977,332	\$56.95	1,968	23,685	
FY16 AVG	1,133	9,474	10,607	10,607	33,209	43,740	7,658	29,675	45,740	1,524	14,145	33,290	49,832	57,627	3.1	2.1	\$6,977,332	\$56.95	1,968	23,685	
FY17 TOT	9,970	103,165	113,135	113,135	344,558	448,616	64,258	244,558	308,816	17,868	17,868	35,736	53,604	62,872	3.1	2.1	\$6,977,332	\$56.95	1,968	23,685	
FY17 AVG	831	8,597	9,345	9,345	28,859	37,067	5,353	20,381	25,735	1,524	14,145	33,290	49,832	57,627	3.1	2.1	\$6,977,332	\$56.95	1,968	23,685	
FY18 TOT	8,977	83,148	92,125	92,125	288,387	376,514	56,793	216,514	273,307	17,868	17,868	35,736	53,604	62,872	3.1	2.1	\$6,977,332	\$56.95	1,968	23,685	
FY18 AVG	748	6,929	7,511	7,511	24,032	31,377	4,733	18,043	22,776	1,524	14,145	33,290	49,832	57,627	3.1	2.1	\$6,977,332	\$56.95	1,968	23,685	
FY19 TOT	8,977	83,148	92,125	92,125	288,387	376,514	56,793	216,514	273,307	17,868	17,868	35,736	53,604	62,872	3.1	2.1	\$6,977,332	\$56.95	1,968	23,685	
FY19 AVG	748	6,929	7,511	7,511	24,032	31,377	4,733	18,043	22,776	1,524	14,145	33,290	49,832	57,627	3.1	2.1	\$6,977,332	\$56.95	1,968	23,685	
FY20 TOT	6,213	76,613	82,826	82,826	258,448	334,265	48,177	182,826	230,999	17,868	17,868	35,736	53,604	62,872	3.1	2.1	\$6,977,332	\$56.95	1,968	23,685	
FY20 AVG	518	6,384	6,902	6,902	21,538	28,018	4,015	15,245	19,250	1,524	14,145	33,290	49,832	57,627	3.1	2.1	\$6,977,332	\$56.95	1,968	23,685	
FY21 TOT	2,619	53,252	55,871	55,871	174,603	227,206	32,651	124,603	157,254	17,868	17,868	35,736	53,604	62,872	3.1	2.1	\$6,977,332	\$56.95	1,968	23,685	
FY21 AVG	218	4,446	4,656	4,656	14,550	18,934	2,721	10,384	13,104	1,524	14,145	33,290	49,832	57,627	3.1	2.1	\$6,977,332	\$56.95	1,968	23,685	



SUPPLEMENTAL NUTRITION ASSISTANCE PROGRAM (SNAP) REPORT - ANNUAL SUMMARY  
FY02 - FY10

Year	(1) AUTHORIZED CASES		(2) PARTICIPATING CASES		(3) PARTICIPATING PERSONS		(4) AVG FAMILY SIZE		(5) VALUE	(6) AVG PER CASE	(7) AVG PER PERSON	(8) DMI RET	(9) DIR RET	(10) TOT RET
	FA	NA	PA	NA	PA	NA	PA	NA						
FY02 TOT	182,389	346,597	52,644	494,159	162,686	931,906	1,094,592	3.1	\$84,811,716	\$179.72	\$81.14	2,137	17,062	19,199
FY02 AVG	15,199	28,883	4,387	36,793	13,557	77,059	91,216	2.1	\$7,480,976			178	1,422	1,609
FY03 TOT	194,712	386,978	104,035	464,399	236,151	1,047,440	1,283,591	2.6	\$109,047,479	\$191.87	\$84.96			
FY03 AVG	16,226	32,248	8,670	38,692	19,679	87,287	106,966	2.3	\$9,087,290					
FY04 TOT	189,489	461,350	188,642	449,189	312,971	1,124,024	1,436,995	1.7	\$118,632,583	\$185.99	\$82.56			
FY04 AVG	16,791	38,446	15,720	37,432	26,081	93,669	119,750	2.3	\$9,886,049					
FY05 TOT	184,263	482,075	184,162	472,665	287,168	1,177,330	1,464,498	1.6	\$126,436,277	\$192.50	\$86.33			
FY05 AVG	15,355	40,173	15,347	39,389	23,931	98,111	122,042	2.2	\$10,536,356					
FY06 TOT	186,903	476,069	186,157	467,240	278,027	1,142,487	1,420,434	1.5	\$124,486,526	\$190.52	\$87.64			
FY06 AVG	15,575	39,672	15,513	38,937	23,169	95,201	118,370	2.2	\$10,373,877					
FY07 TOT	189,339	490,118	187,778	480,929	269,346	1,165,809	1,435,155	1.4	\$129,249,045	\$193.28	\$90.06			
FY07 AVG	15,778	40,843	15,648	40,077	22,446	97,151	119,596	2.1	\$10,776,754					
FY08 TOT	207,956	575,206	206,410	564,788	305,150	1,345,921	1,651,071	1.5	\$157,984,295	\$204.86	\$95.69			
FY08 AVG	17,330	47,934	17,201	47,066	25,429	112,160	137,589	2.1	\$13,165,358					
FY09 TOT	227,210	793,977	224,511	777,666	330,645	1,826,833	2,157,478	1.5	\$241,986,318	\$241.46	\$112.16			
FY09 AVG	16,934	66,165	18,709	64,806	27,554	152,236	179,790	2.2	\$20,165,527					
FY10 TOT	252,445	1,226,103	249,873	1,198,669	383,044	2,741,963	3,125,007	1.5	\$381,588,683	\$263.43	\$122.11			
FY10 AVG	21,037	102,175	20,820	99,889	31,920	228,497	260,417	2.2	\$31,799,057					

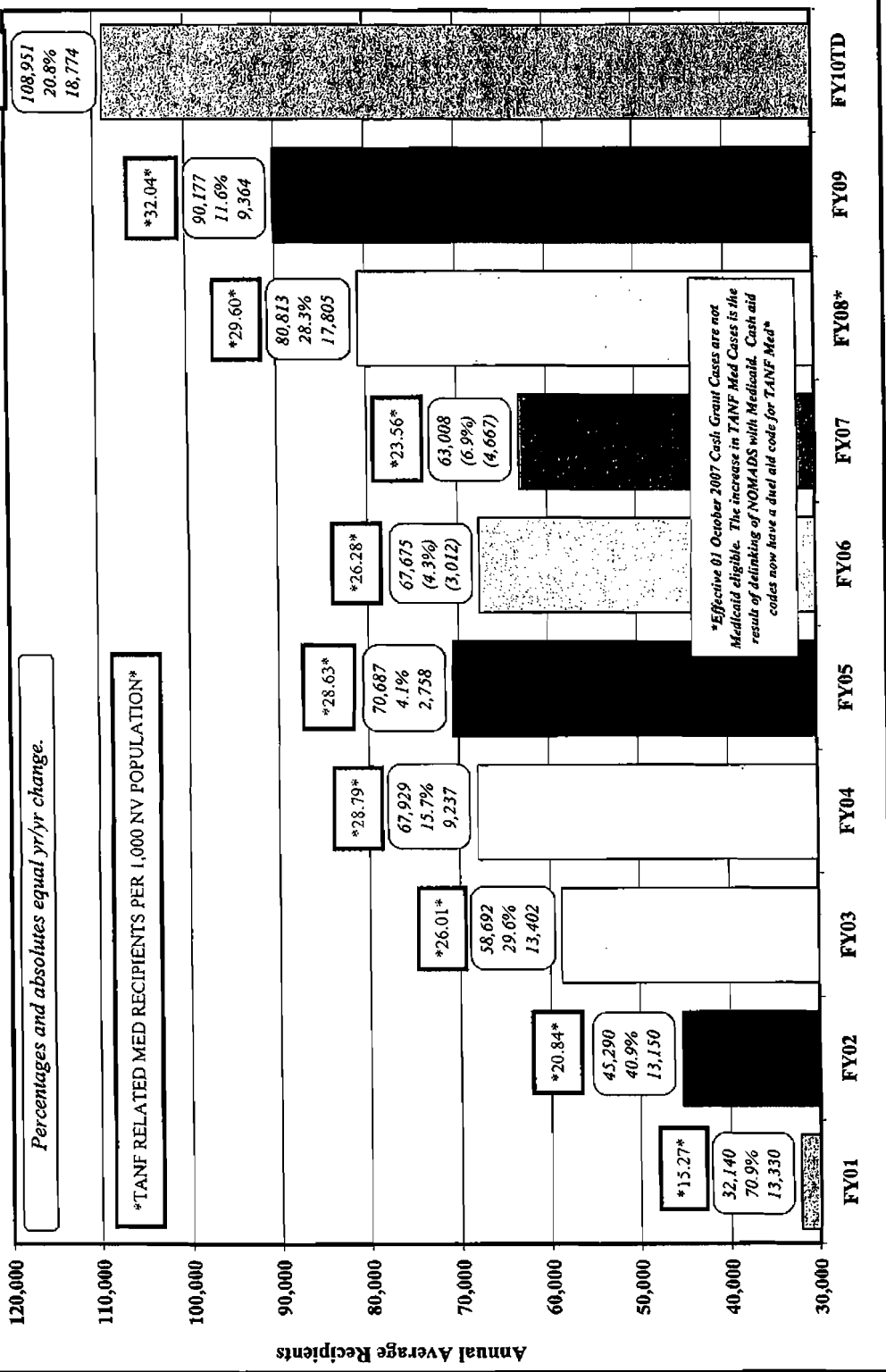
Notes: Applications not tracked starting FY02.  
EBT starts FY2003 - DMI and DIR returns no longer used.  
In March 2003, federal mandated changes for definitions of "PA" and "NA" for Participating Cases and Persons implemented. This has affected the average family size for both in FY2003.  
In April 2003, the issuance cycle was changed from a fiscal month to a calendar month.

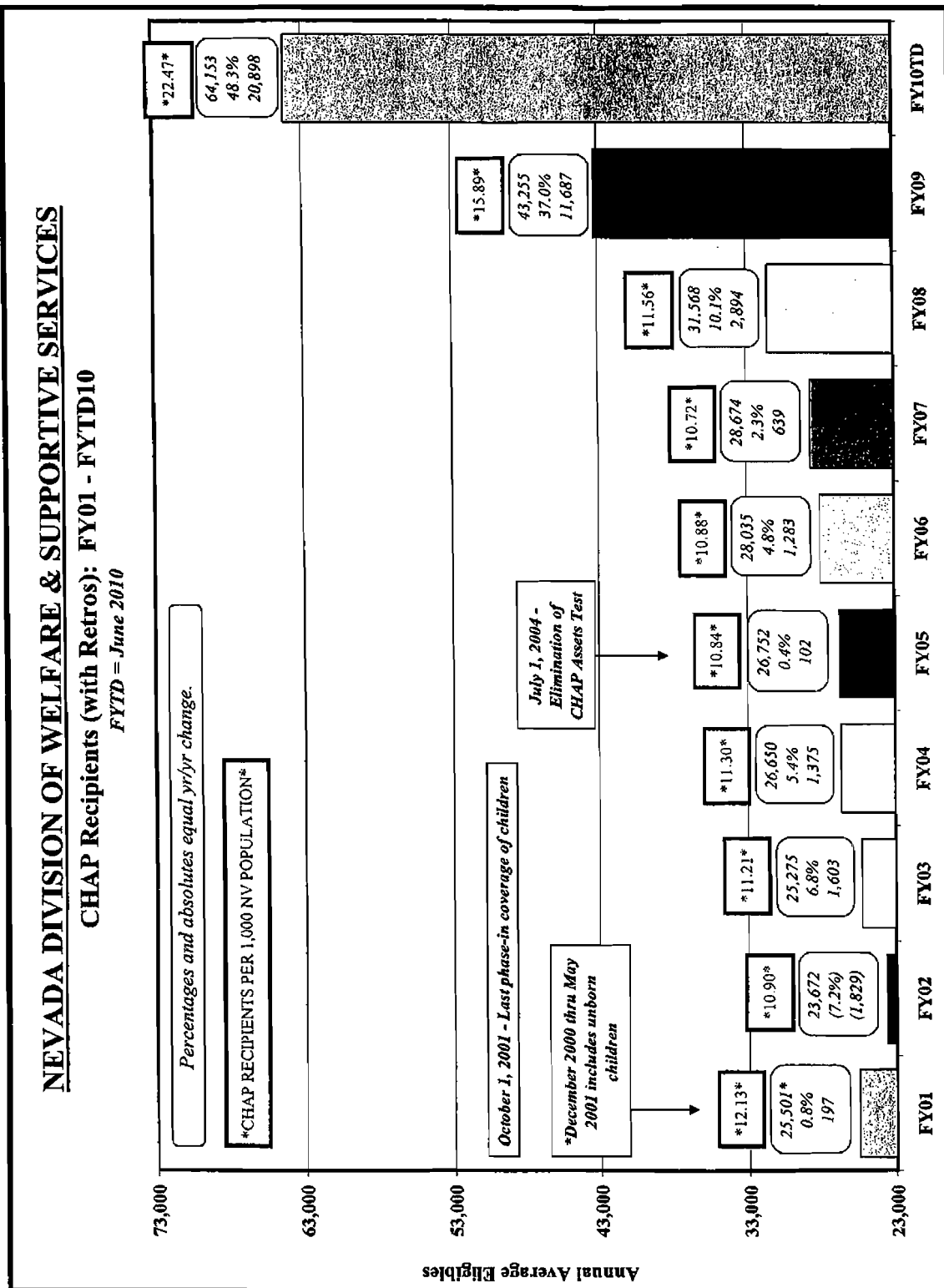


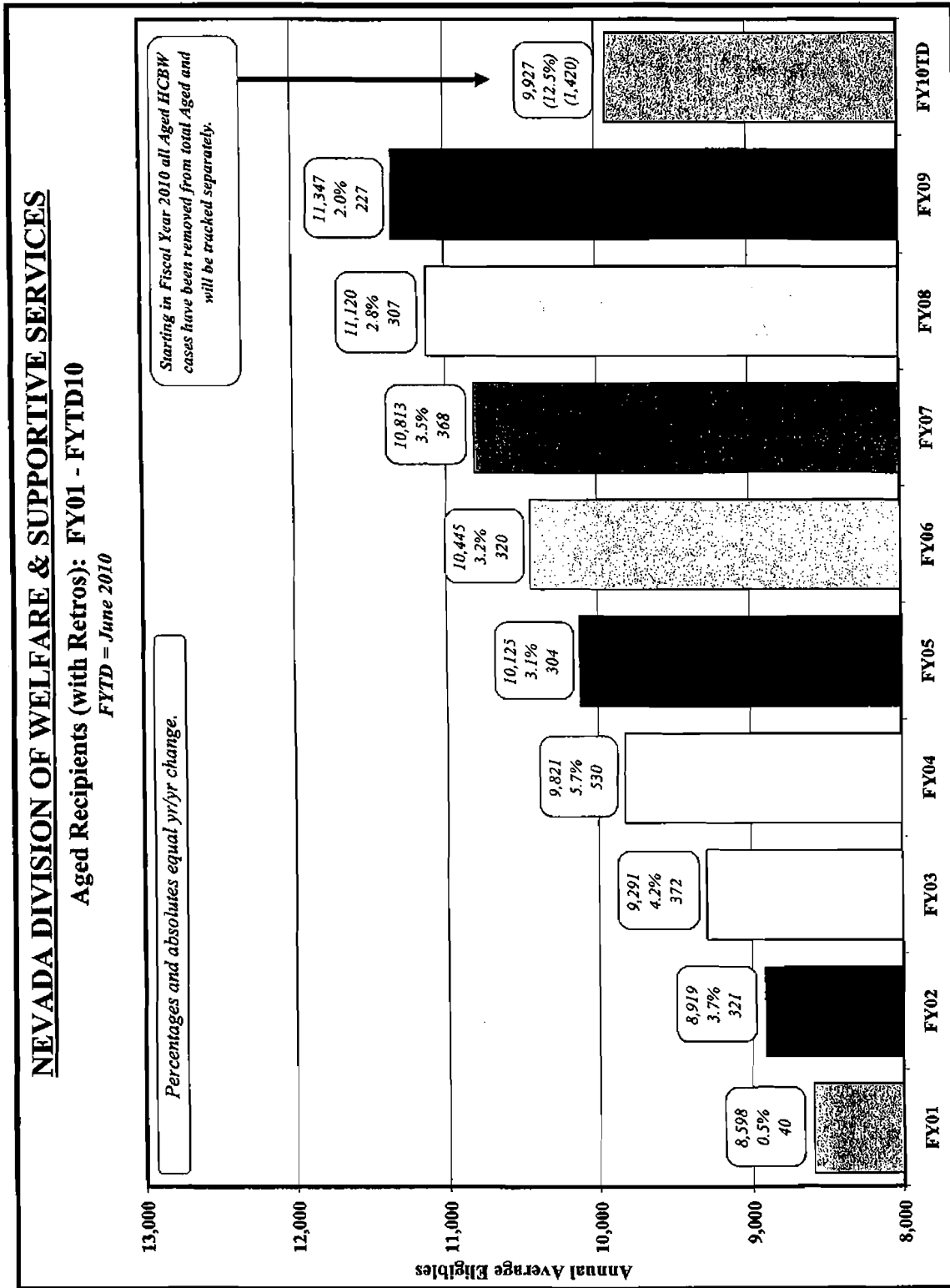
**NEVADA DIVISION OF WELFARE & SUPPORTIVE SERVICES**

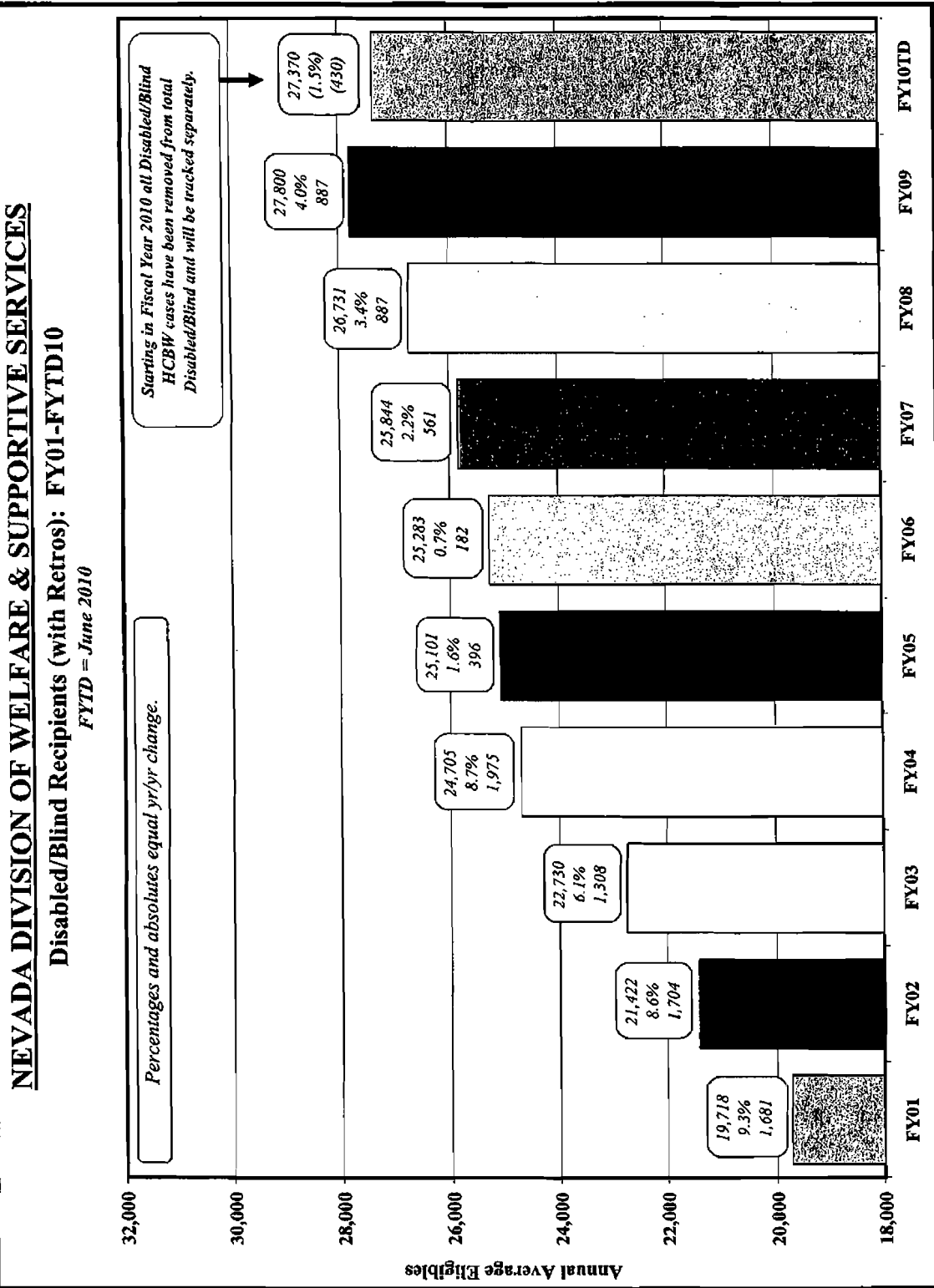
**TANF RELATED MED: FY01 - FYTD10**

FYTD = June 2010





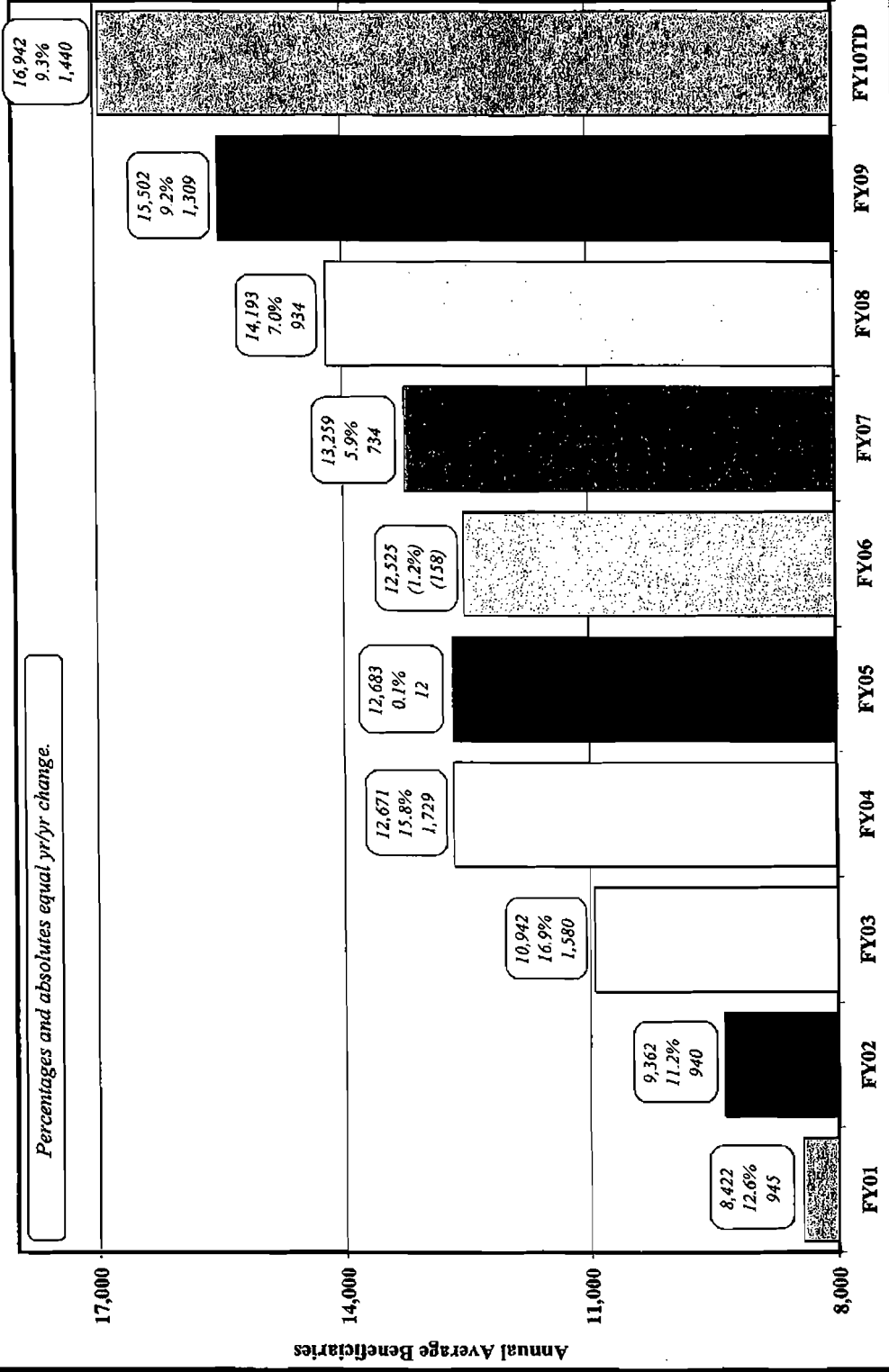




**NEVADA DIVISION OF WELFARE & SUPPORTIVE SERVICES**

Medicare Beneficiaries: FY01 - FYTD10

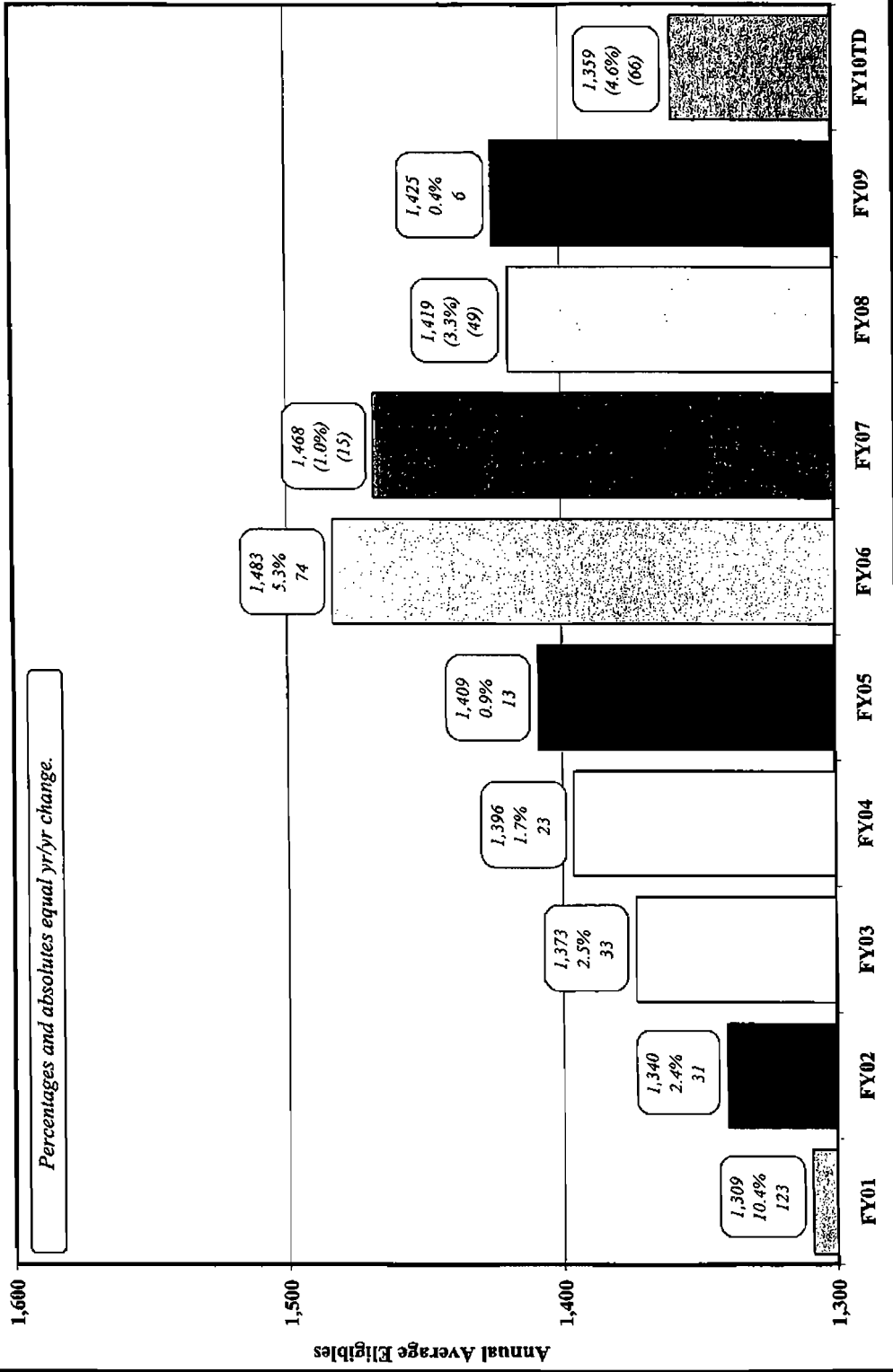
FYTD = June 2010



**NEVADA DIVISION OF WELFARE & SUPPORTIVE SERVICES**

County Match Recipients (with Retros): FY01-FYTD10

FYTD = June 2010

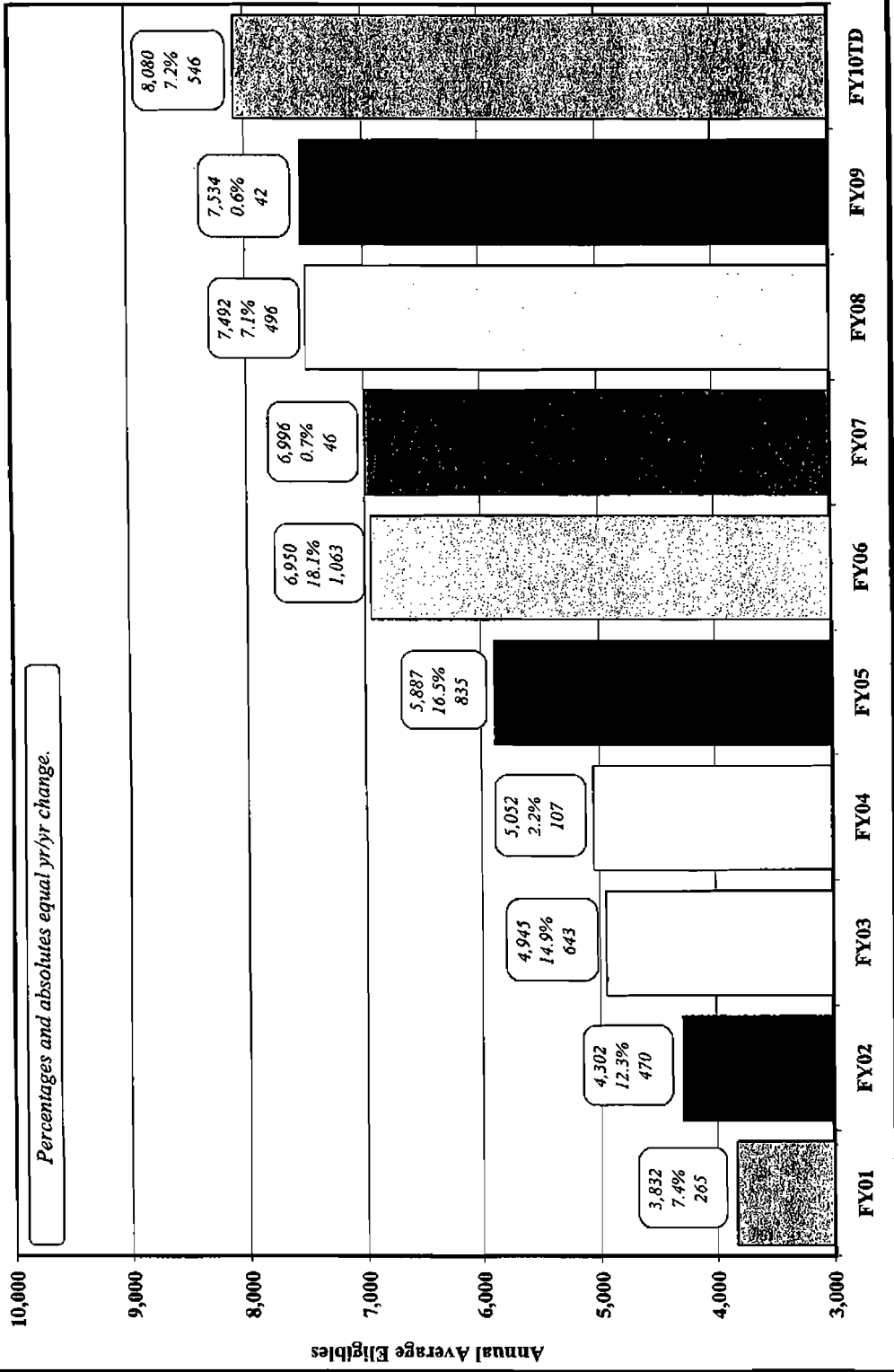


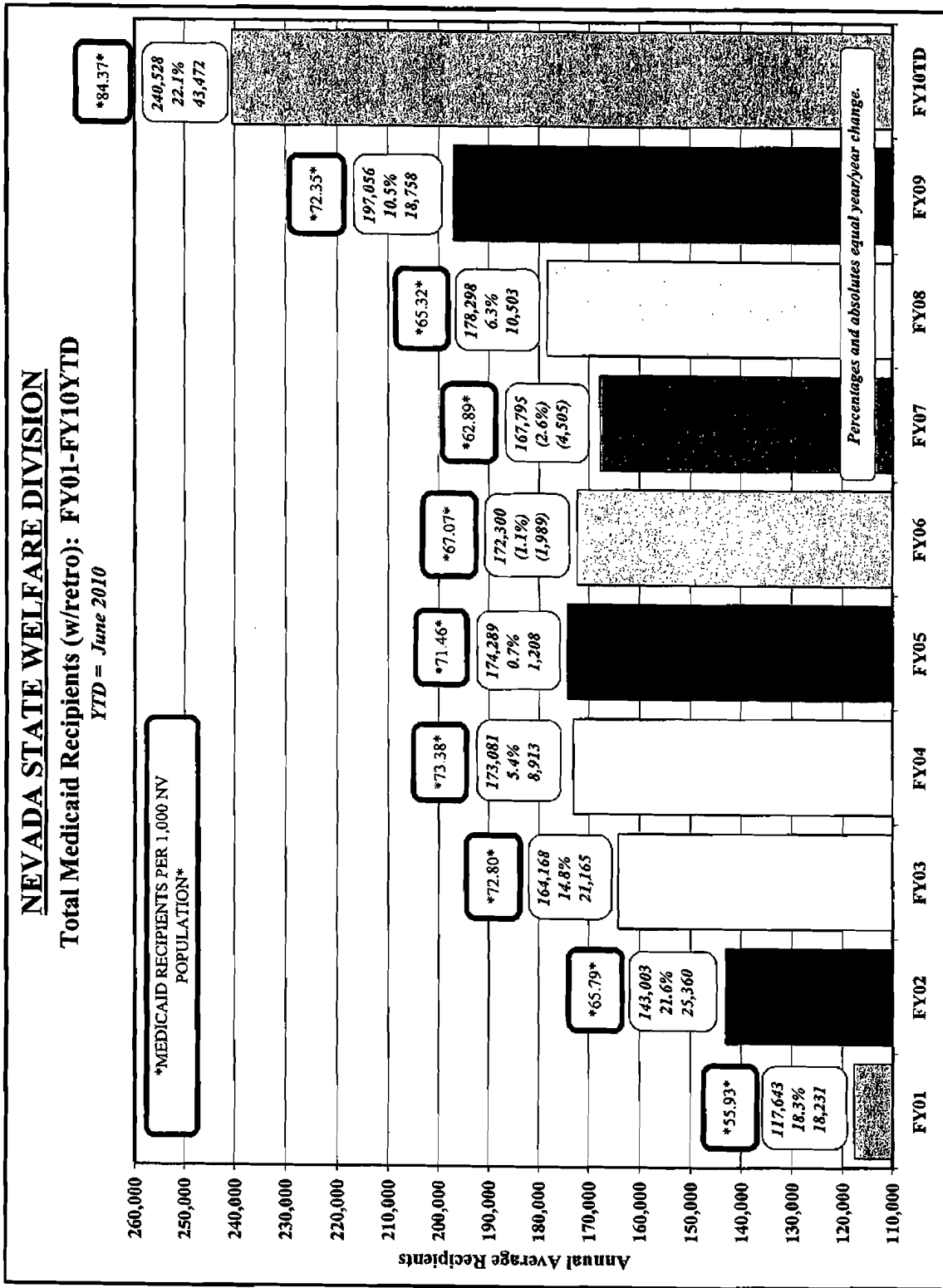


**NEVADA DIVISION OF WELFARE & SUPPORTIVE SERVICES**

**Child Welfare Recipients (with Retros): FY01-FYTD10**

*FYTD = June 2010*





\*84.37\*

240,528  
22.1%  
43,472

\*MEDICAID RECIPIENTS PER 1,000 NV  
POPULATION\*

\*72.35\*

197,056  
10.5%  
18,758

\*65.32\*

178,298  
6.3%  
10,503

\*62.89\*

167,795  
(2.6%)  
(4,505)

\*67.07\*

172,300  
(1.1%)  
(1,989)

\*71.46\*

174,289  
0.7%  
1,208

\*73.38\*

173,081  
5.4%  
8,913

\*72.80\*

164,168  
14.8%  
21,165

\*65.79\*

143,003  
21.6%  
25,360

\*55.93\*

117,643  
18.3%  
18,231

**NEVADA DIVISION OF WELFARE & SUPPORTIVE SERVICES**

Supplemental Nutrition Assistance Program (SNAP) Participating Persons: FY01-FYTD10

FYTD = June 2010

