



Features

iS-2840 Digital Signage System is a powerful solution equipped with the professional Digital Signage software for content creation, scheduling, and remote management.

The iS-2840 offers four mini DisplayPort outputs that is able to combine four TV screens as a big 4K video wall, and at the same time supports vertical or horizontal arrangements. The new technique of bezel compensation maintains the video displayed in proportion even the distance between the screens is set longer.

On the other hand, featuring with powerful iSignager software, the iS-2840 enables users to edit 2x2 and 1x4 display content remotely.

Product Highlights

- All-in-one turnkey system.
- Lifelong subscription free (one time investment).
- No firewall/router configuration required.
- De-duplication feature makes plan publishing faster and effective.
- Perform mission and power on/off automatically instead of requiring complicated manual configurations.
- Multi-layer display provides more diversified layout arrangements.
- Provide the clone mode and extend mode.
- Central remote system management lets users save more on-site cost.
- Easy design 2x2 and 1x4 video wall content directly from iSignager software. No extra devices need.

iSignager Digital Signage System



iArtist

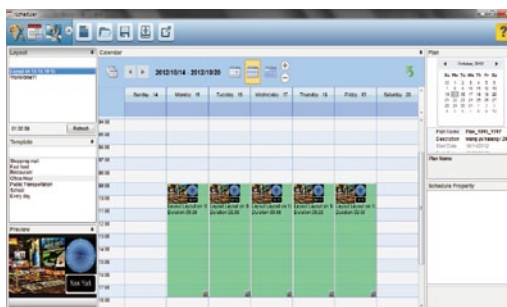
iArtist is a powerful and flexible layout design tool. It enables users to design a multi-zone layout and define file playback sequences, timing, and transition effects. In addition, users can use the intuitive drag-and-drop operation to create their own templates or layouts. The timeline view lets users define playlists intuitively.



iScheduler

iScheduler is a full range scheduling tool for the layout playback. It supports hourly, daily, weekly, and monthly based scheduling. Several scheduling templates are provided for users' quick choices.

Users can easily do scheduling by putting their desired layouts into time slots. Drag and drop to determine the playback length in the calendar view slots. The precise time definition of the playback looping is also available by right clicking the slot for the detailed property settings.



iCommander

iCommander is an administration software for remote monitoring. iCommander presents the monitoring status by a dynamically refreshing dashboard. It delivers essential information for routine checks.

Further detailed information required for maintenance or troubleshooting is also provided by the iCommander.

Dashboard

Building a digital signage network is usually the easy part. However, running a system successfully day after day requires constant vigilance. All of those screens and signage players need a watchful eye just in case something goes wrong. The dashboard panel feature gives you the proactive tools that enable you to monitor a digital signage network conveniently on your computer.

Player status

The real-time and check-in status from player for monitoring the player health in your network by player health status monitoring.

Player monitor

A summary of a player's real time information and configuration.

Command task

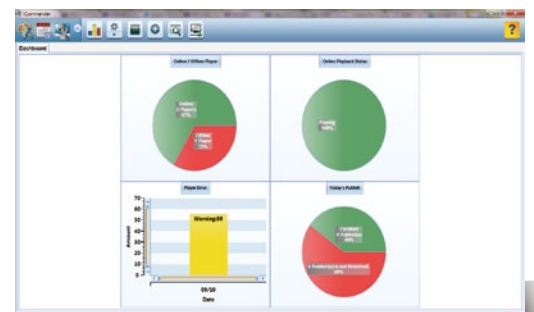
Arrange the player management command set such as schedule on/off and truncate media files.

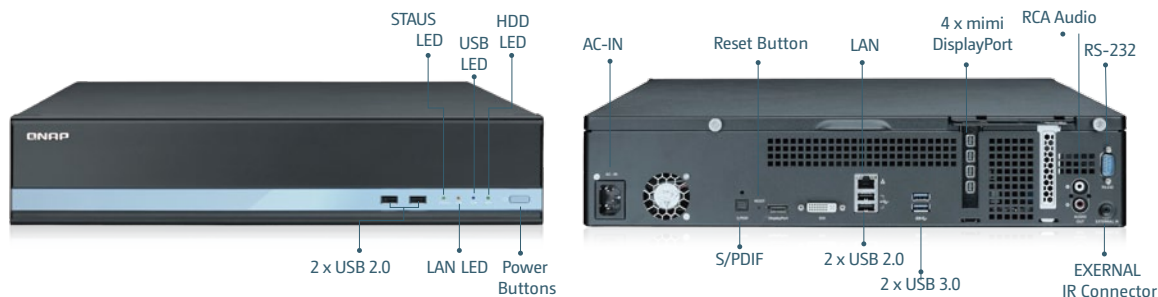
Log viewer

Providing the detail player log include the systems log and playback related information.

Publish status

Arrange the player management command set such as schedule on/off and truncate media files.





Content display

- Dynamically controlled by displays.
- Connected monitors can be configured as a clone, independent, or extended large canvas, depending on the layout design, or monitor configuration, and the resolution can be changed dynamically.
- Highly integrated with video wall product lines iVW-FD122/ iVW-FD133 Video wall configurations can be controlled by the iSignager players.
- Support 3 image transition types
- Intuitive playlist panel with drag-and-drop design.

A smart choice for your digital signage

- iSignager makes remote monitoring easy and simple; heartbeat packets for detecting the player's on/offline status, online playback status to check up the player error messages and tasks for today's publishing.
- iSignager saves your on-site management cost by scheduling on/off your remote players without acquiring any on-site effort!
- iSignager enables you to perform troubleshooting remotely by retrieving some important indexes, such as CPU temperature. Whenever an abnormal situation occurs, the hardware watchdog timer will trigger the system restart automatically. In the iCommander, you can also choose to restore configurations or recover the system immediately, whenever necessary.
- Support RTSP and HTML content display.
- Support emergency message broadcasting.

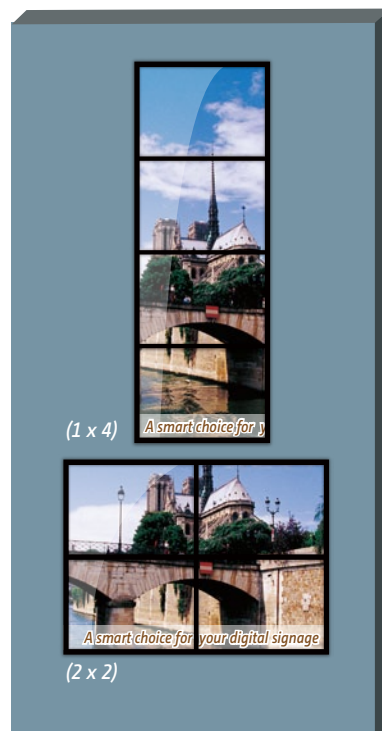
Supported Multimedia Objects:

- Video: Support MPEG-1/2/4, WMV, FLV, H.264, VC-1 video formats.
- Audio: Support MP3, AC3, AAC, WMA, WAV.
- Image: Support BMP, JPG, JPEG, JPE, PNG.
- Text: Support messages from text strings, text files and RSS.
- Flash: Support Flash 10.
- Clock: Support digital, analog, and multiple real-time clocks.

Hardware spec.

With the combination of iSignage software and QNAP digital signage player's hardware capability, we provide a complete digital signage solution for business needs.

Memory	DDR3 4GB
Video Output	4 x mini DisplayPort (mini DisplayPort to DVI adapter included)
Maximum Output Resolution	2560 x 1600 (DisplayPort)
Audio Output	1 x RCA L/R 1 x S/PDIF
Storage	1 x 2.5" SSD bay 1 x mSATA
LAN	1 x Intel® GbE controller
WLAN (optional)	(optional) 802.11b/g/n, WEP/WPA/WPA2
USB	4 x USB 2.0 (2 front, 2 rear); 2 x USB 3.0
Serial	1 x RS-232
Watchdog	Internal hardware watchdog for error recovery
Buttons	1 x power button 1 x reset to factory default button
Power	100~240V AC, 250W
Demension (W x D x H mm)	430 x 420 x 88
Mounting	Rack mount
Operating Temperature	0°C to 45°C with air flow
Certification	CE, FCC



Bezel compensation

