

# D-Link Quick Installation Guide

This product can be set up using any current web browser, i.e., Internet Explorer 6 or Netscape Navigator 6.2.3.



**DI-808HV**  
8-Port Broadband  
VPN Router

1. Thank you for purchasing this Router to share your high-speed Internet connection with other computers. To share high-speed Broadband access, you must have either an Ethernet-based cable or DSL modem with an established Internet account from an Internet Service Provider (ISP).
2. It is best to use the same computer that is connected to your modem for configuring the DI-808HV. The DI-808HV acts as a DHCP server and will assign all the necessary IP address information on your network. **See Appendix at the end of this Quick Installation Guide or the Manual on the CD-ROM for setting each network adapter to automatically obtain an IP address.**

## Check Your Package Contents



**DI-808HV 8-Port BroadbandVPN Router**



**CD-ROM (containing Manual and Warranty)**



**Ethernet (CAT5 UTP/Straight-Through) Cable**



**5V DC Power Adapter**



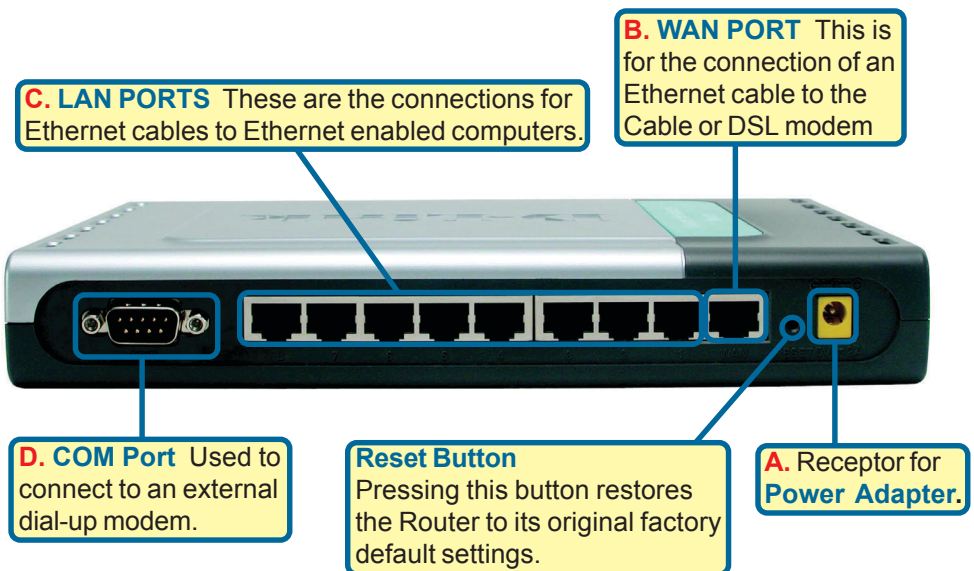
Using a power supply with a different voltage rating will damage this product and void the warranty

If any of the above items are missing, please contact your reseller.

# 1

## Connecting The DI-808HV 8-Port Broad-band VPN Router To Your Network

- A.** First, connect the power adapter to the **receptor** at the back panel of the DI-808HV and then plug the other end of the power adapter to a wall outlet or power strip. The Power LED lights up indicating proper operation.
- B.** 1. Power off your cable or DSL modem; devices that do not have a on/off switch will require you to unplug the power adapter. Now, the DI-808HV should be powered on and the cable / DSL modem should be turned off.  
cable / DSL modem (**Power Off**) – DI-808HV (**Power On**)
2. Connect an Ethernet cable to the Ethernet jack located on the cable / DSL modem. After the Ethernet cable is securely connected, power on the cable / DSL modem by turning on the unit or plugging in the power adapter.  
cable / DSL modem (**Power On**) – DI-808HV (**Power On**)
3. Insert the other end of the Ethernet cable to the **WAN PORT** on the back panel of the DI-808HV. The WAN LED light will illuminate to indicate proper connection. If the WAN LED is not illuminated, please check your Ethernet connection or go back to step B1 and repeat the steps.
- C.** Insert an Ethernet cable to **LAN Port 1** on the back panel of the DI-808HV and an available Ethernet port on the network adapter in the computer you are using to configure the DI-808HV. The LED light for LAN Port 1 illuminates to indicate proper connection. (Note: The LAN Ports on the DI-808HV are Auto MDI/MDIX. Meaning you can use a straight-through or crossover Ethernet cable in the LAN Ports.)
- D.** COM Port for dial-up Internet connection.



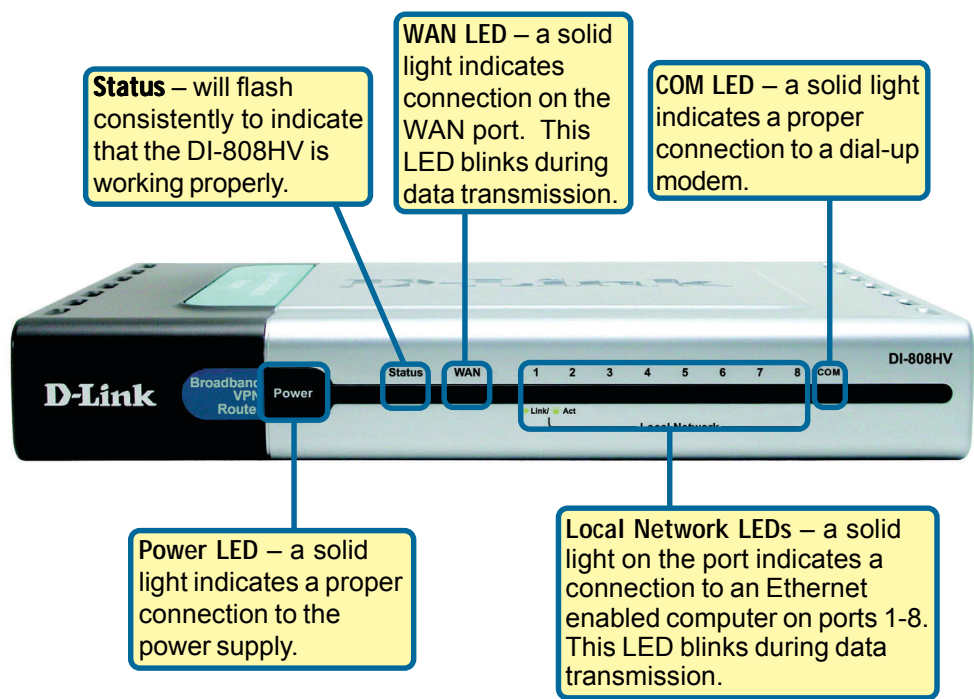
## 2

# Restart Your Computer

## 3

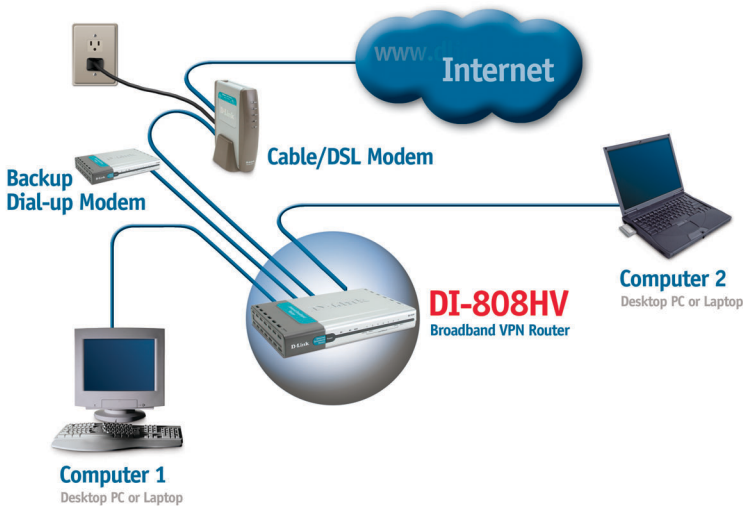
# Connecting Additional Computers To The DI-808HV

Using additional Ethernet (CAT5 UTP) cables, connect your Ethernet-equipped computers to the remaining Ethernet LAN ports on the back panel of the DI-808HV.



The LAN Ports on the DI-808HV are Auto MDI/MDIX. Meaning you can use a straight-through or crossover Ethernet cable in the LAN Ports.)

When you have completed the steps in this *Quick Installation Guide*, your connected network should look similar to this:



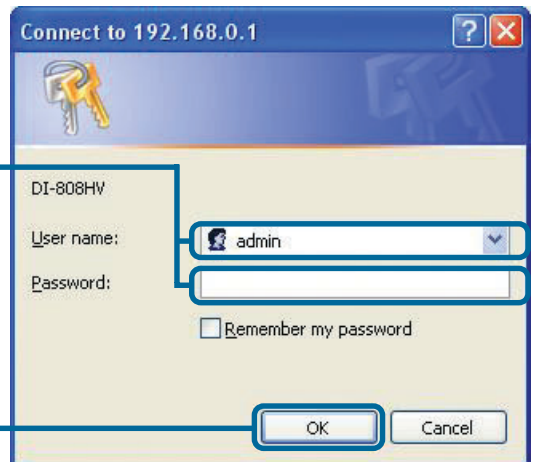
## 4 Using The Setup Wizard

Open your Web browser and type “**http://192.168.0.1**” into the URL address box. Then press the **Enter** or **Return** key.



The logon pop-up screen will appear.

Type “**admin**” for the username and leave the password field blank.

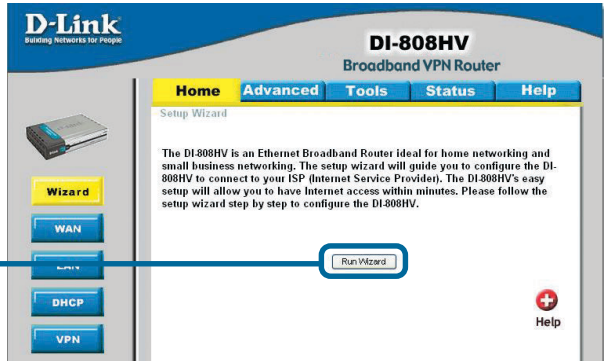


Click **OK**

# 4

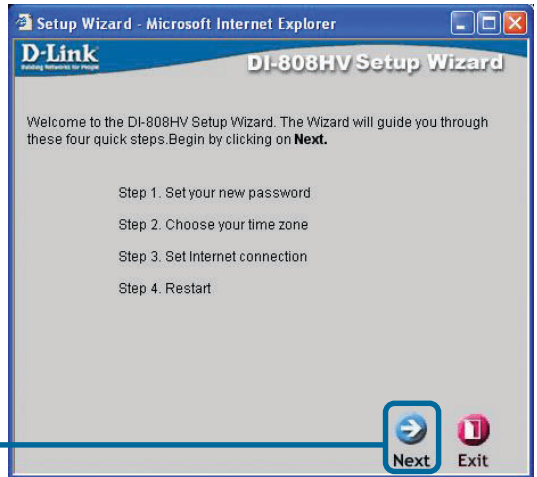
## The Setup Wizard (continued)

Once you have logged in, the **Home** screen will appear.



Click **Run Wizard**

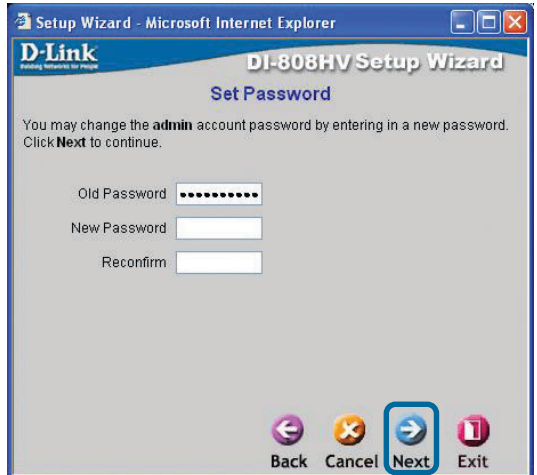
You will see the following screens



Click **Next**

**Set up your new password.**

You have the option to establish a password.

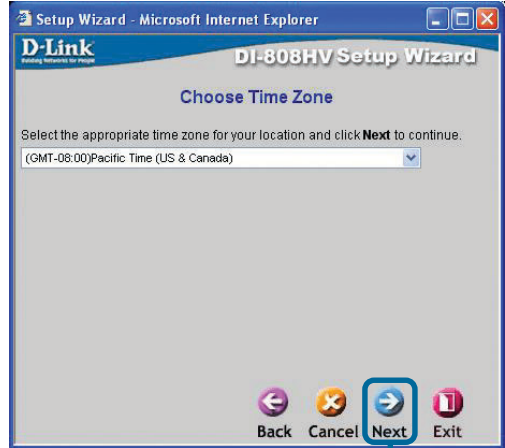


Click **Next**

# 4

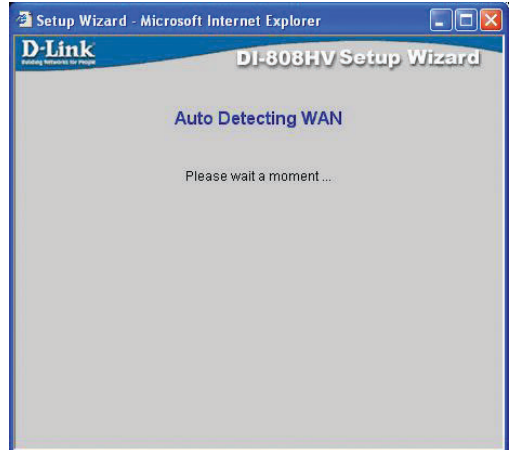
## The Setup Wizard (continued)

Choose your time zone from the drop down list.




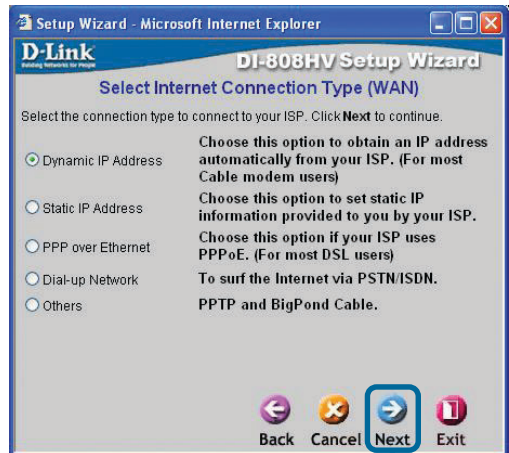
Click **Next**

A this point, the setup wizard will try to auto-detect your Internet connection type. If you have a Dynamic IP Address or PPPoE connection, you will be brought to the corresponding page.



You may manually select an Internet connection type in this menu.

 If you are unsure of which setting to select, please contact your Internet Service Provider.




Click **Next**

## 4

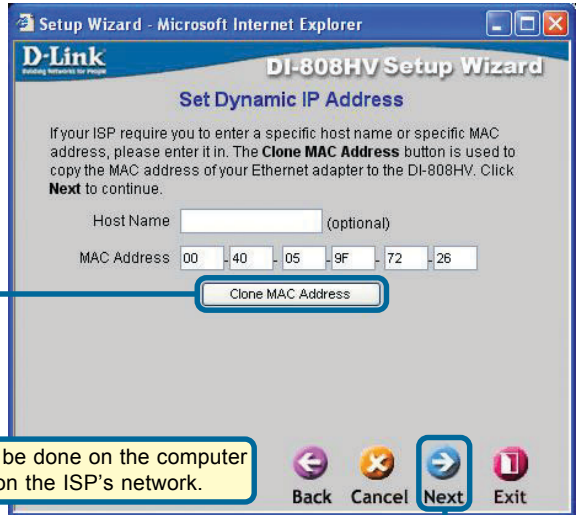
## The Setup Wizard (continued)

If you selected **Dynamic IP Address**, this screen will appear: (Used mainly for Cable Internet service.)

Click the **“Clone MAC Address”** button to automatically copy the MAC address of the network adapter in your computer. You can also manually type in the MAC address.

 This setup should be done on the computer that is registered on the ISP's network.

Click **Next**



Setup Wizard - Microsoft Internet Explorer

D-Link  
Enabling Networks for People

DI-808HV Setup Wizard

Set Dynamic IP Address

If your ISP require you to enter a specific host name or specific MAC address, please enter it in. The **Clone MAC Address** button is used to copy the MAC address of your Ethernet adapter to the DI-808HV. Click **Next** to continue.

Host Name  (optional)

MAC Address 00 40 05 9F 72 26

Clone MAC Address

Back Cancel Next Exit

If your ISP provides a **Static IP Address**, and this option is selected, then this screen will appear:

Enter the IP address information originally provided to you by your ISP. You will need to complete all the required fields.

Click **Next**



Setup Wizard - Microsoft Internet Explorer

D-Link  
Enabling Networks for People

DI-808HV Setup Wizard

Set Static IP Address

Enter in the static IP information provided to you by your ISP. Click **Next** to continue.

WAN IP Address  0.0.0.0

WAN Subnet Mask  255.255.255.0

WAN Gateway  0.0.0.0

Primary DNS  0.0.0.0


Secondary DNS  0.0.0.0

Back Cancel Next Exit

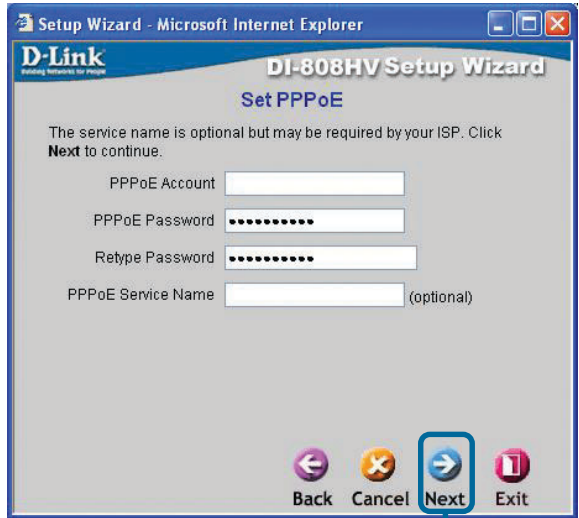
# 4

## The Setup Wizard (continued)

If your ISP uses **PPPoE** (Point-to-Point Protocol over Ethernet), and this option is selected, then this screen will appear (Used mainly for DSL Internet service):

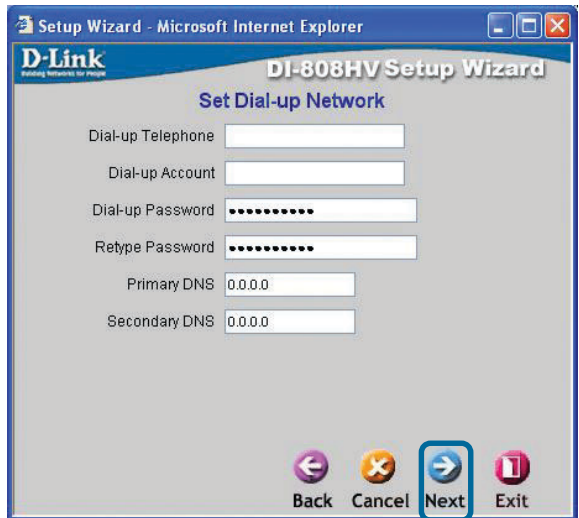
 Please be sure to remove any existing PPPoE client software installed on your computers.

Enter in the username (PPPoE Account) and password provided to you by your ISP.



Click **Next**

Configure this section only if you have an analog dial-up account. Otherwise click **Next** to skip.

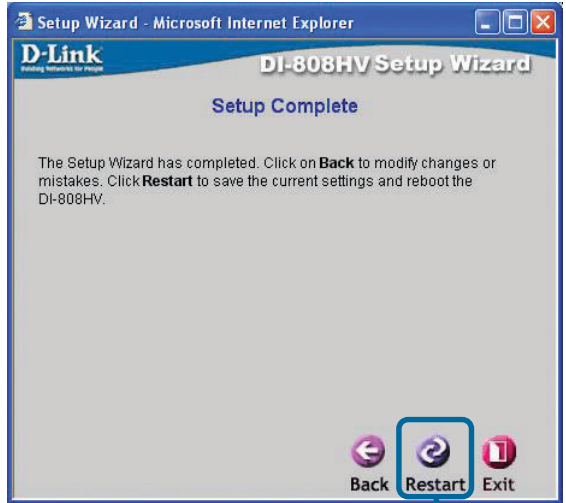


Click **Next**



# 5

## Your Setup is Complete!



Click **Restart**

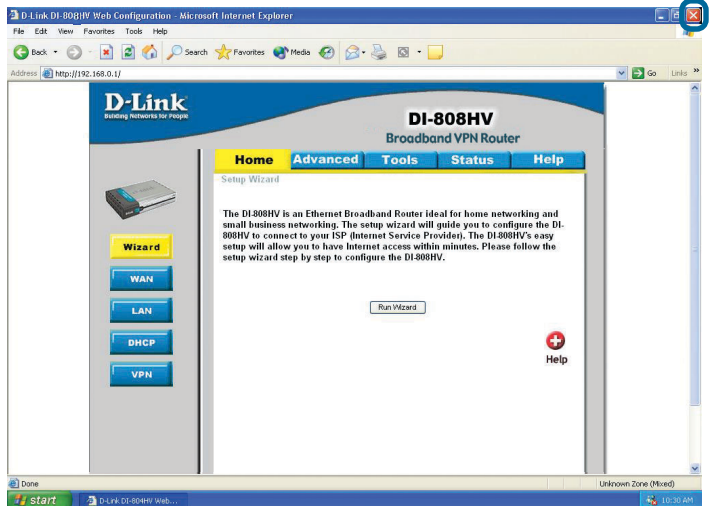
## Test Internet Connection.

You will be returned to the **Home** tab.

Click to **Exit**

**Relaunch** your Web browser (i.e., *Internet Explorer* or *Netscape Navigator*), to link to your favorite Web site to test your Internet connection.

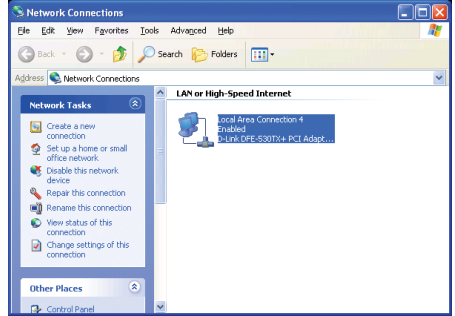
For additional settings or information, refer to the **Advanced**, **Tools**, or **Status** tabs on the web-management interface; or to the Manual located on the CD.



# APPENDIX (continued)

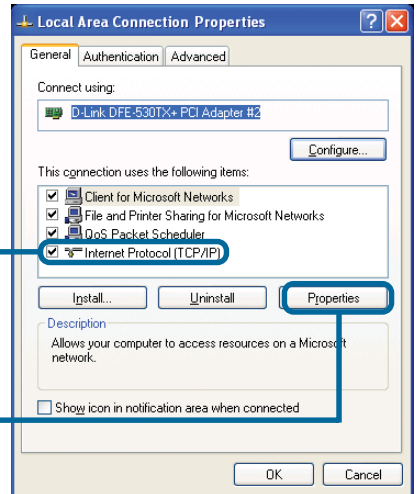
To connect to the network, make sure the network adapter in your computer is configured properly. Here's how to configure the network adapter to obtain an IP address automatically for the DI-808HV 8-Port Broadband VPN Router.

For **Microsoft Windows XP**: Go to **Start > right-click on My Network Places > select Properties > right-click on the Network Connection** associated with the Ethernet adapter and select **Properties** (i.e., D-Link DFE-530TX+).



Click **Internet Protocol (TCP/IP)**

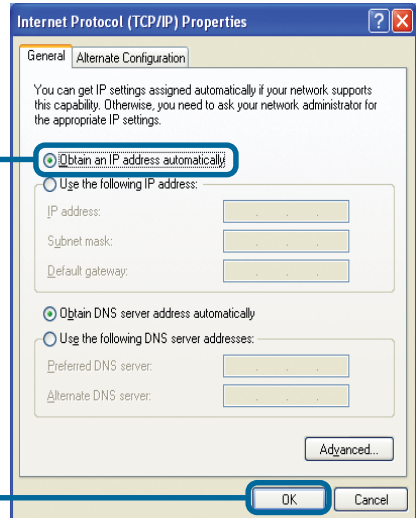
Click **Properties**



Select **Obtain an IP address automatically**

Click **OK**

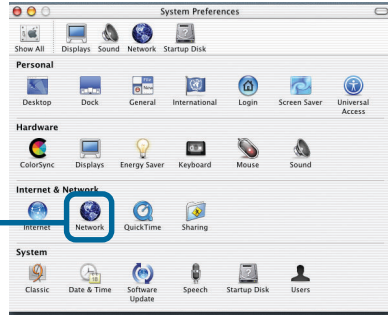
**Restart** your computer



# For Apple Macintosh OS X:

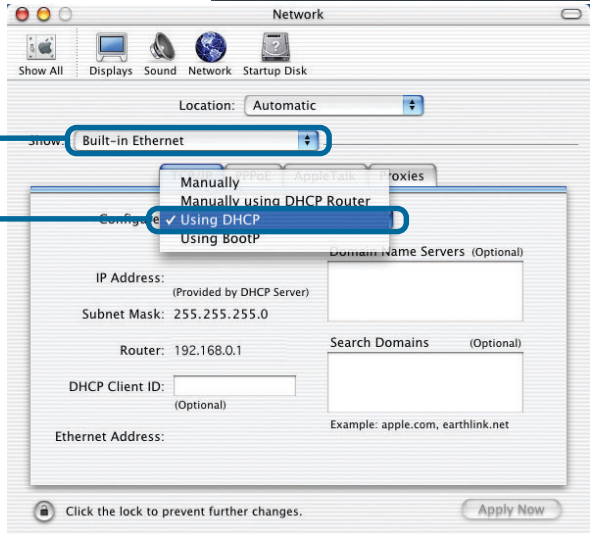
Go to the **Apple Menu**, click on **System Preferences** and **Select Network**

Click on **Network**



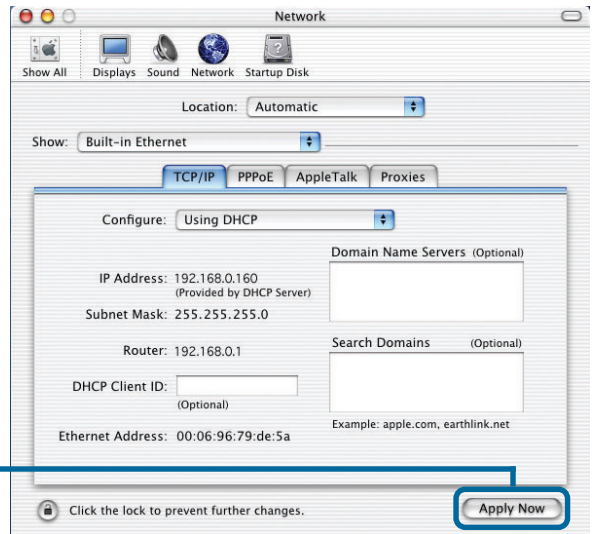
Select **Built-in Ethernet** in the show pull down menu

Select **Using DHCP** in the Configure pull down menu



Click on **Apply Now**

The IP address information, the subnet mask, the Router's IP address and the Ethernet adapter address will appear



# Technical Support

You can find software updates and user documentation on the D-Link website.

D-Link provides free technical support for customers within the United States and within Canada for the duration of the warranty period on this product.

U.S. and Canadian customers can contact D-Link technical support through our website, or by phone.

## Tech Support for customers within the United States:

### ***D-Link Technical Support over the Telephone:***

(877) 453-5465

24 hours a day, seven days a week.

### ***D-Link Technical Support over the Internet:***

<http://support.dlink.com>

email:[support@dlink.com](mailto:support@dlink.com)

## Tech Support for customers within Canada:

### ***D-Link Technical Support over the Telephone:***

(800) 361-5265

Monday to Friday 8:30am to 9:00pm EST

### ***D-Link Technical Support over the Internet:***

<http://support.dlink.ca>

email:[support@dlink.ca](mailto:support@dlink.ca)

