



How to do an art reproduction

Application: Adobe Acrobat

Printer: HP Designjet Z6100 series

Software: HP PS Driver

Operating System: Mac OS X

You should consider that each person has their own perception and their own subjective opinion about the result; this is because there are various factors that can influence our opinions, such as the type of art reproduction (portrait, landscape...), the source color space, the media used, the environmental conditions, the subjective perception about your own image, etc.... This means the printing suggestion may not completely match with your own personal opinion.

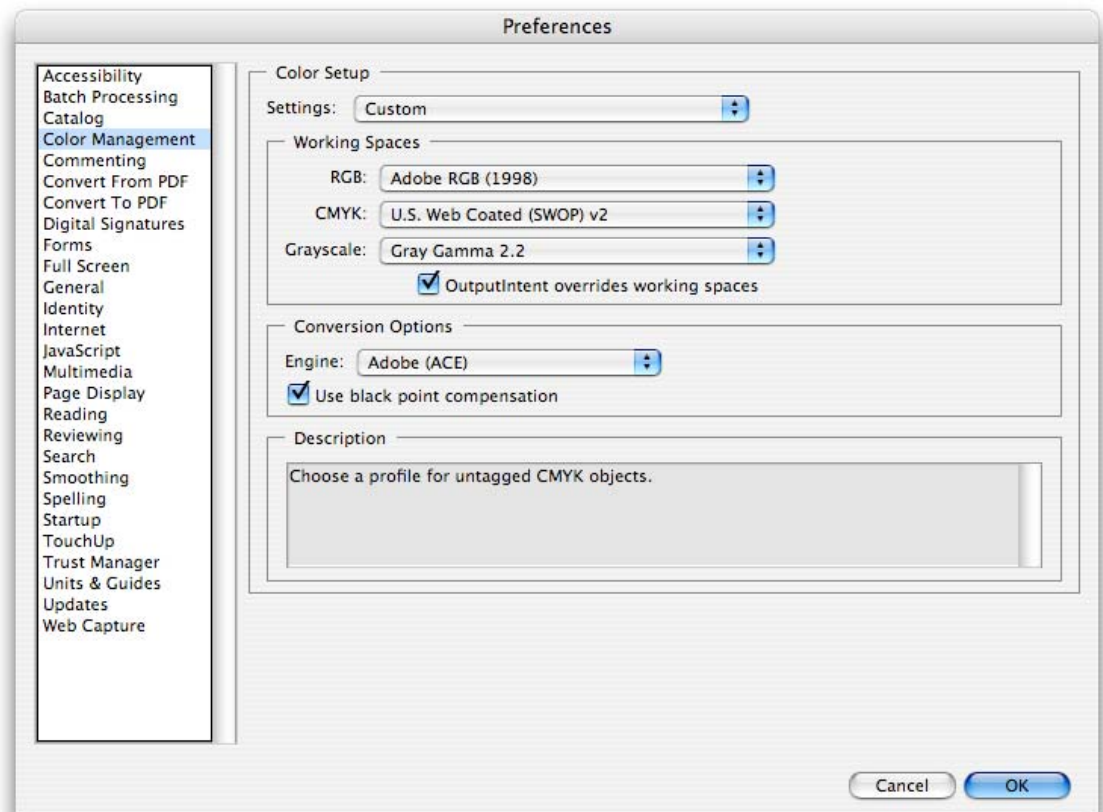
1. First recommendations:

- In order to get a correct display, it's also essential to have the monitor calibrated, refer to the [Profile my monitor](#) document.
- See the [Media type functionality & features](#) and choose the most appropriate media.
- Ensure that the Paper Type setting on the front panel corresponds to the paper that you intend to use. It is essential that the paper is correctly color calibrated for the printer; refer to the [Calibrate my printer](#) document.
- If the paper that you are using is not listed, we strongly recommend creating a new Custom Paper Type, or if you cannot find a paper type that resembles yours closely enough. You can add a custom paper automatically by using the HP Color Center; refer to the [Add and profile a new paper type](#) document.

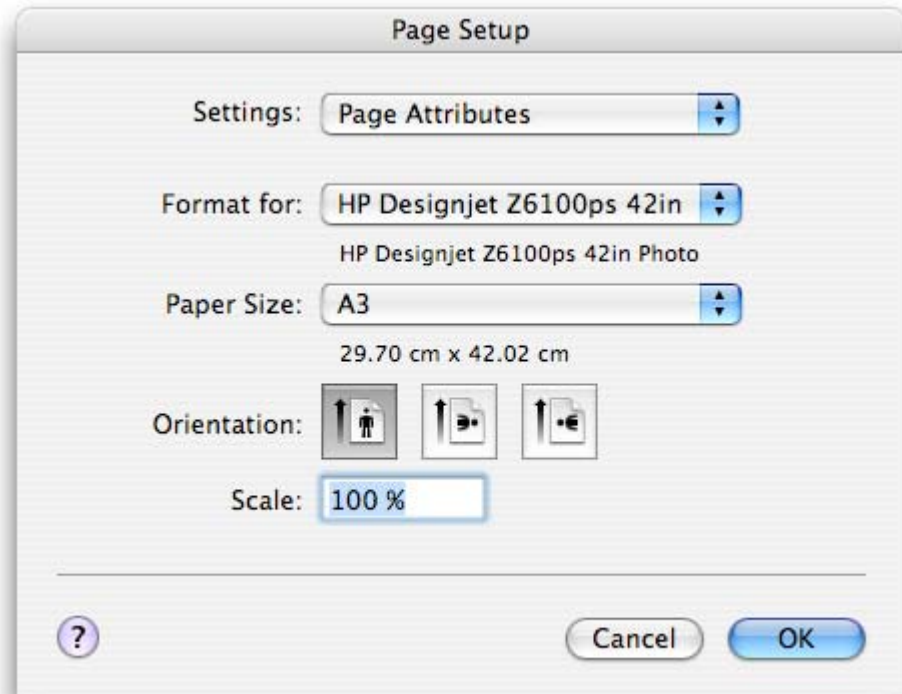
2. Open Acrobat (If you are intended to print from Adobe Acrobat Reader, go to step 4).

3. Configure the **Color Management** options, **Acrobat** menu > **Preferences...**:

- **Working Spaces > RGB:** Select the profile of the scanner or camera you have used to get your file (source profile), if you don't have it, select Adobe RGB (1998).
- **Working Spaces > CMYK:** Select Europe ISO Coated FOGRA27 (for Europe), U.S. Web Coated (SWOP) v2 (for US) and Japan Standard v2 (for Japan).
- Check **Use black point compensation** check box.

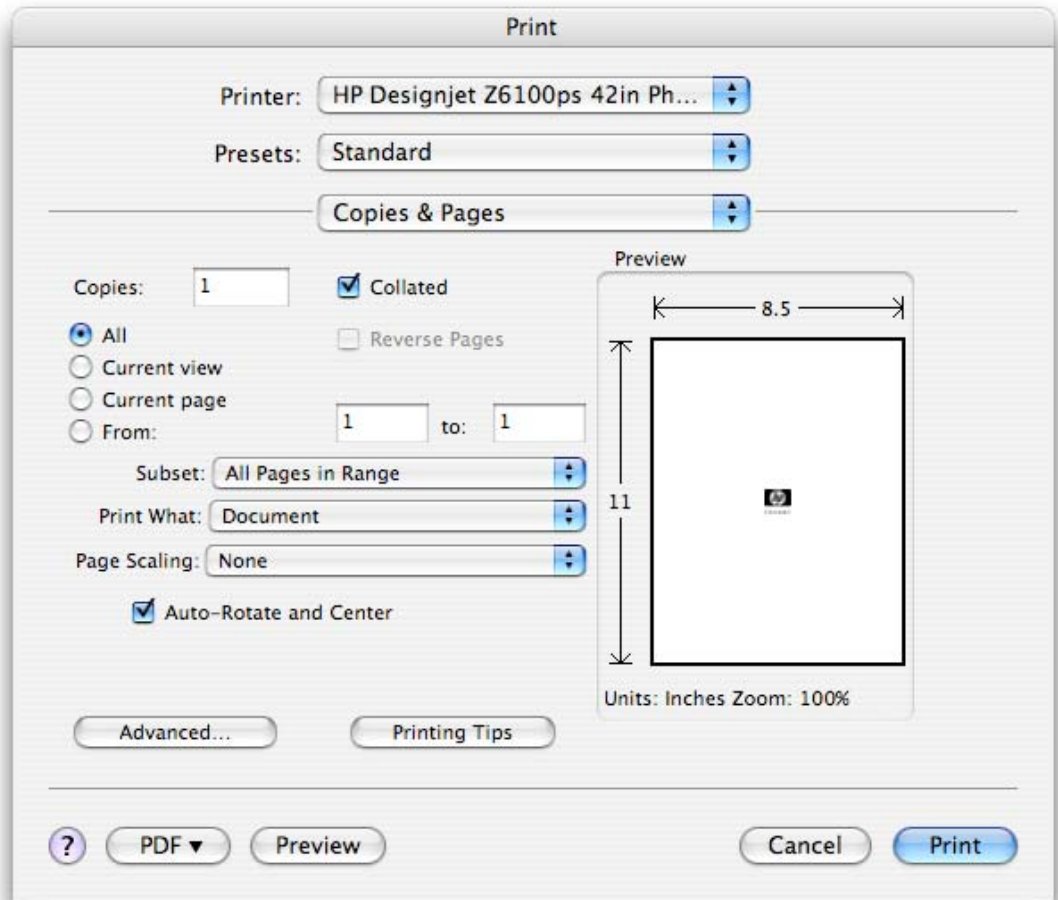


4. Open your file, **File menu > Open...**
5. Make sure you have configured the Page Setup appropriately for your current document; **File menu > Page Setup...**:
 - **Format for:** Select your printer again (ex. HP Designjet Z6100 24in Photo).
 - **Paper Size:** Select the paper size of the media loaded on the printer.
 - **Orientation:** Select the orientation of your image on the paper.

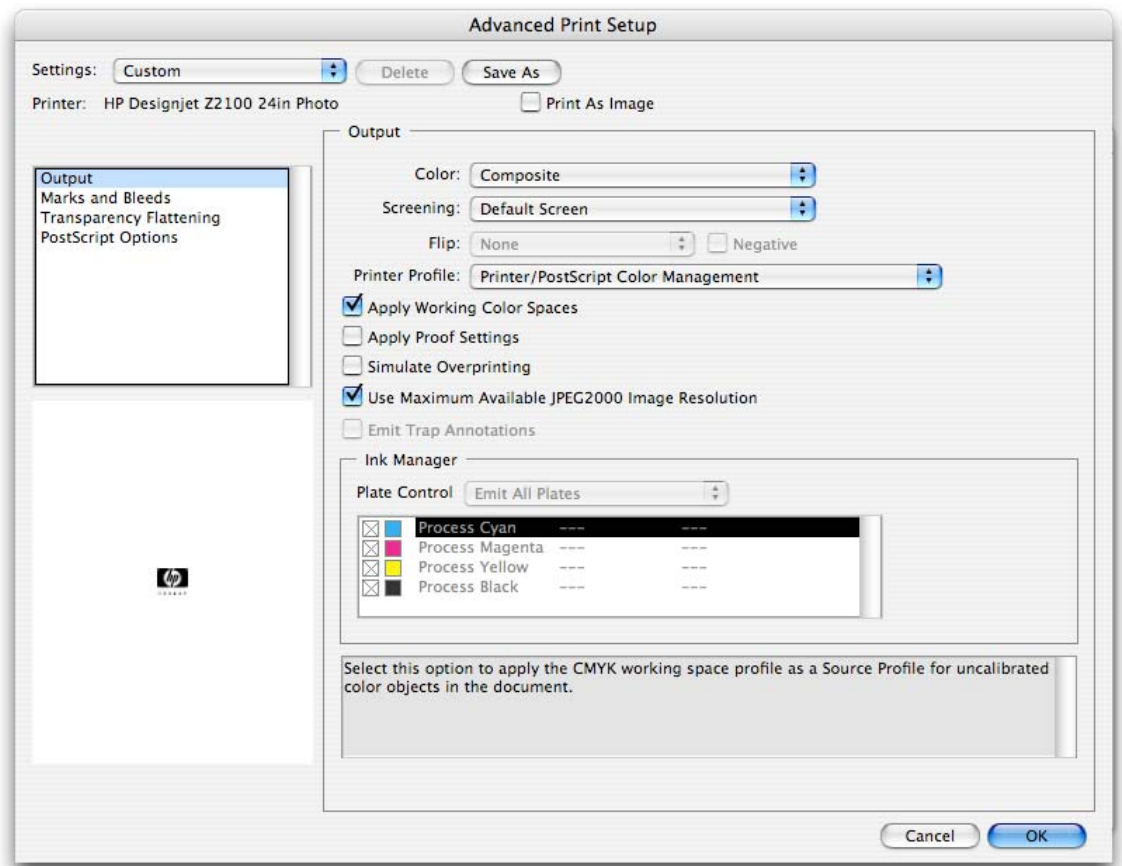


6. Adobe Acrobat print settings; **File menu > Print...**:

- **Printer:** Select the printer (ex. HP Designjet Z6100ps 42in Photo).
- Select the printing options you need, **Page Scaling, Print What...**:



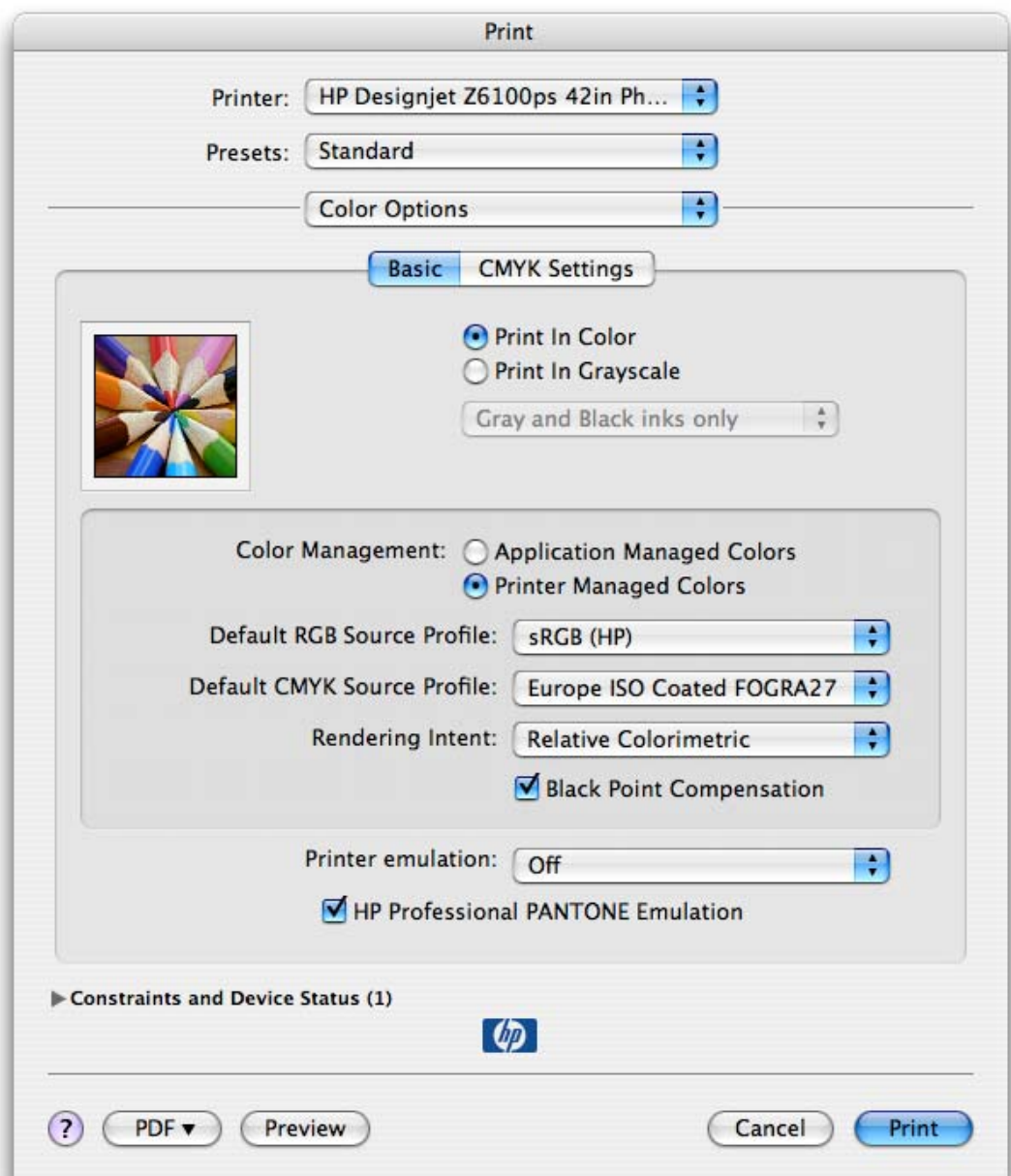
- Click **Advanced...** button:
 - **Output > Color:** Select **Composite**.
 - **Output > Printer Profile:** Select **Printer/PostScript Color Management**.
 - Check **Apply Working Color Spaces** check box.



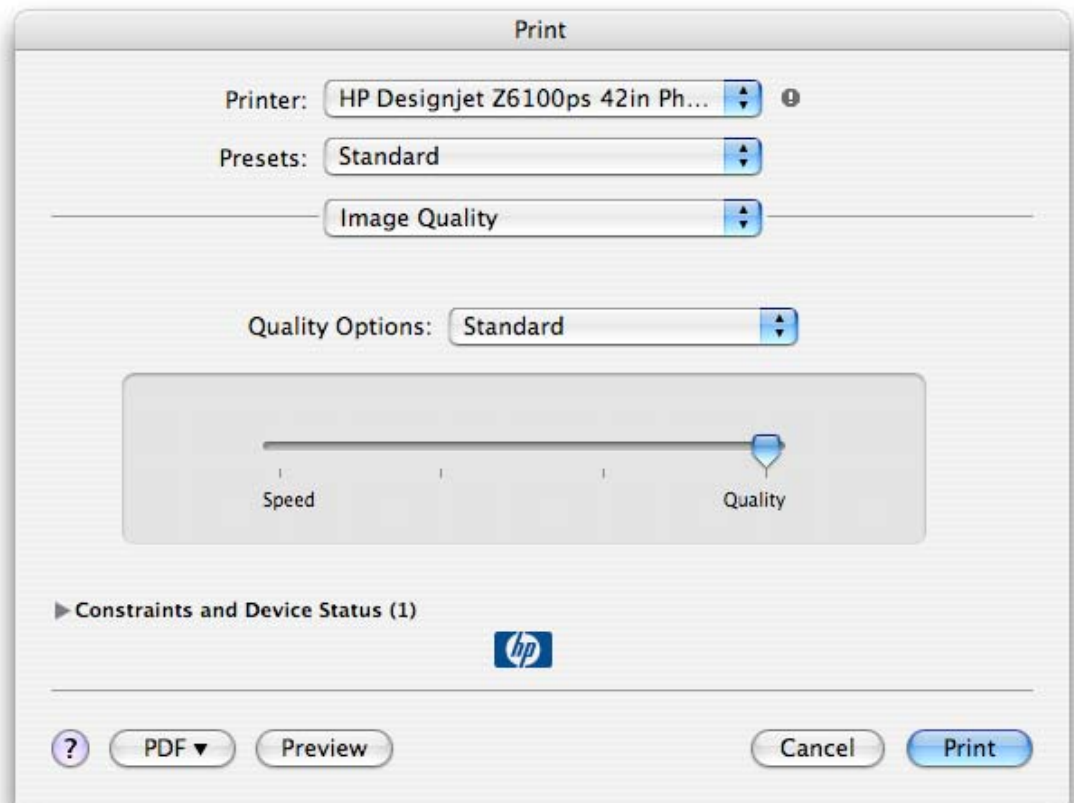
- Click **OK**.

7. Select Driver print settings:

- Select **Paper Handling** tab to choose:
 - **Destination Paper Size:** Select the media size that is loaded on the printer. Make sure that the document size is not bigger than the paper size you have in the printer.
 - And other settings you need.
- **Color Options** tab:
 - Select **Print In Color**.
 - Select **Color Management > Printer Managed Colors:**
 - **Default RGB Source Profile:** Select sRGB (HP).
 - **Default CMYK Source Profile:** Select Europe ISO Coated FOGRA27 (for Europe), U.S. Web Coated (SWOP) v2 (for US) and Japan Standard v2 (for Japan).
 - **Rendering Intent:** Relative Colorimetric.
 - Check **Black Point Compensation** check box.



- **Image Quality** tab:
 - **Quality Options:** Select **Standard** and drag the slider to Quality (Best).



- Click **Print**.

For more information on HP Designjet products

www.hp.com/go/designjet

© 2007 Hewlett-Packard Development Company, L.P. The information contained herein is subject to change without notice. The only warranties for HP products and services are set forth in the express warranty statements accompanying such products and services. Nothing herein should be construed as constituting an additional warranty. HP shall not be liable for technical or editorial errors or omissions contained herein.

Adobe Acrobat and PostScript are trademarks of Adobe Systems Incorporated. PANTONE is Pantone, Inc.'s check-standard trademark for color.

Rev. 1.0, 04/2007

