

GET YOUR NEW THIN CLIENT SYSTEM UP AND RUNNING.



Congratulations—welcome to enhanced security, reduced cost, less risk and a system that's a whole lot easier to manage.

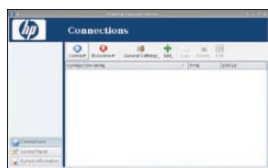
HP ThinPro thin clients help improve productivity with quick deployment of simple, familiar and more reliable computing experiences.

It's easy to get started.

This quick-start guide illustrates some of the most common tasks of setting up an HP ThinPro thin client. It's designed to help you get up and running, right out of the box. However, if you have questions, need more information or want to set up a more unique configuration, please refer to the HP ThinPro Administration Guide at www.hp.com/support/manuals/thinclients. Select your thin client and its respective guide under *General Reference*.

LOGGING ON AND GETTING STARTED

The HP ThinPro interface appears when you first turn on the thin client and defaults to User Mode.



User Mode

- Allows restricted rights to subset of access connection creation and control panel applications. Allows restricted rights to subset of access connection creation and control panel applications.

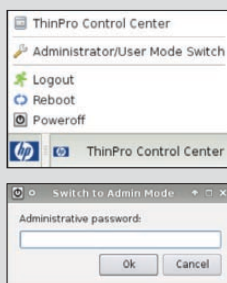
Administrator Mode

- Allows full access to control panel applets, manipulation of HP ThinState Capture and Deploy, FTP images, etc.
- Defines which connections and connection types are visible when in User Mode, and limits users on deleting connections or creating new ones.

Note: You must log in with administrator permissions to access all components of the HP ThinPro user interface. The default password for Administrator Mode is: **root**.

To switch between User and Administrator mode:

1. Click the HP logo in the bottom left of the screen.
- or
2. Position your cursor in the screen background and right-click. Then, select **Administrator/User Mode Switch**.
3. Enter your password.



Quick tip



To determine if you are in User or Administrator mode:



A blue banner at the top of the console window designates User Mode.

A red banner at the top of the console window designates Administrator Mode.

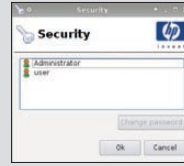
CHANGING PASSWORDS

The security feature allows you to change Administrator and User passwords. HP recommends you change both the Administrator and User passwords to further secure your thin client system.

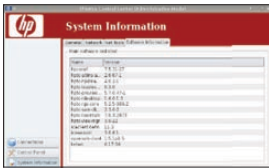
Click **Start > Control Panel > Add or Remove Programs**.

To change your password:

1. Click **Control Panel > Setup > Security**.
2. Select **Administrator** or **User** and click **Change password**.
3. Type the new password in the **New password** field and **Confirmation** fields.
4. Click **OK**.



PRE-INSTALLED/INSTALLED SOFTWARE



To view applications pre-loaded on your ThinPro thin client:

In the ThinPro Control Center, select **System Information > Software Information** (tab).

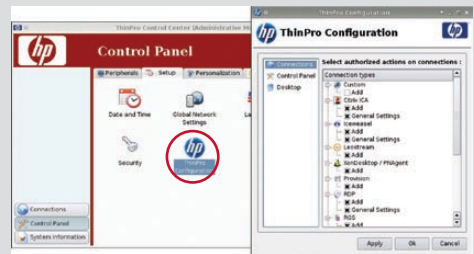
This Software Information screen displays the name and version of the installed software.

ENABLING AND DISABLING USER PERMISSIONS

Administrator Mode only

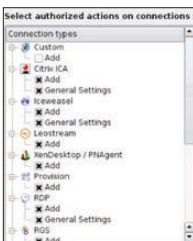
Administrators can provide users with authorized actions on connections, applications and desktop options.

To access, select: **Control Panel > Setup (tab) > ThinPro Configuration**.

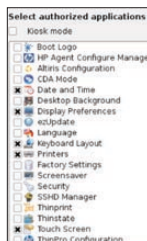


Permissions

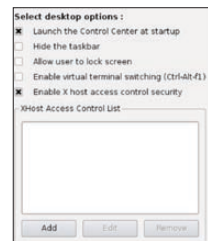
Connections: Authorized actions connections



Control Panel: Authorized applications



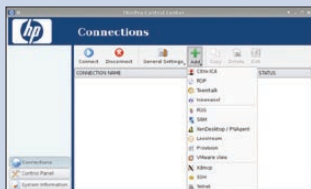
Desktop: Desktop options



Select the box next to each connection, application or desktop option you want to permit access to, then click **Apply**, then **OK** to close the dialogue box.

CREATING AND LAUNCHING CONNECTIONS

1. Select the **Add** button on the **Connections** window list.
2. Select from the drop down list the connection you would like to add.
3. Follow on screen wizard instructions.
4. New Connection name will appear in the connection list.
5. Double click the connection name to launch connection.



Example: adding and connecting to Citrix ICA

1. Select **Add** under **Connections** window.
2. Select Citrix ICA.
3. Provide the respective network and credentials information.
4. Click **Finish**.



MANAGING YOUR THIN CLIENT

There are a variety of management options when installing a new or updated image.

Management options	Ideal for
HP ThinState Capture and Deploy	Simple Thin Client updates
HP ezUpdate (stateless mode support)	Simple FTP-based updates
HP Device Manager	Larger Thin Client deployments
HP Client Automation/Altiris	PCs, Thin Clients and mixed environments

HP ThinState Capture

A very simple wizard-based tool is used to capture or restore (deploy) an image to an HP thin client from the same model and hardware configuration.

Allows you to either capture or deploy a copy of:

1. An **Image**: complete ThinPro OS with add-ons, customizations, settings
2. A **Configuration**: connections and settings

In two locations: FTP server or local USB storage

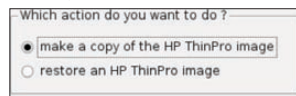
1. Click **Control Panel > Management > ThinState**.



2. Select the **HP ThinPro image** OR the **HP ThinPro configuration**.



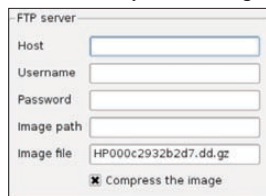
3. Select **make a copy of OR restore (deploy) an HP ThinPro image**, and then click **Next**.



4. Click a **FTP server** OR create a bootable **USB flash drive** and then click **Next**.



5. Type the FTP server information in the fields and choose whether or not to **Compress the image**.



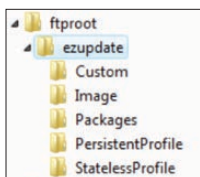
6. Click **Finish**.

MANAGING YOUR THIN CLIENT (CONTINUED)

HP ezUpdate (Stateless Server Setup)

Embedded management solution utilizing existing ftp resources

1. Set up the ezUpdate Server.
 - a. Create two folders in the ftp server.
 - i. ezupdate root directory
 - ii. Directory of items you want to deploy to your ThinPro devices



- **Custom:** shell scripts based updates (.sh)
- **Image:** full HP ThinPro image created by ThinState (.dd.gz)
- **Packages:** one or more HP ThinPro packages

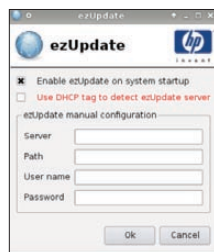
- **PersistentProfile:** temporary thin state profile or templates (.xml)
- **StatelessProfile:** temporary thin state profile or template to be installed on every boot where no data is stored on the thin client flash (.xml)

Note that multiple updates are possible in the same ezUpdate tree (Image + Packages + Profile).

2. Enable ezUpdate utility by either:
 - a. DHCP Tag 137
(recommended method)

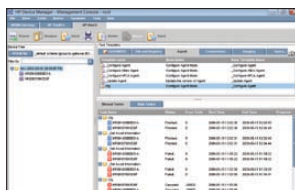
Recommendation: Once the ftp server is set up and the required updates are in place (.dd.gz, package, or .xml profiles), we recommend you set up your DHCP server to provide ezUpdate server information with Tag 137. This provides you full advantage of automatic ezUpdate deployment at boot up on your HP ThinPro device.

- b. Manually
 - i. Click **Control Panel** > **Management** > ezUpdate.
 - ii. Input the **listed** fields.



HP Device Manager

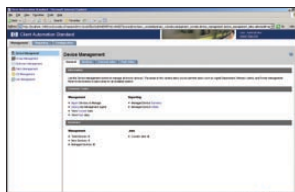
Easily track, configure, upgrade, clone and manage up to thousands of thin client devices.



To download software and for more information please visit www.hp.com/support/devicemanager.

HP Client Automation

Automate the management of PC and thin client devices, regardless of their physical location.

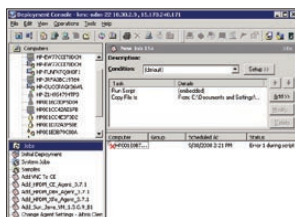


To download software and for more information please visit www.hp.com/go/software.

Search "HP Client Automation."

Altiris Deployment Solution

Solution offers OS deployment, configuration and software deployment across HP thin client operating systems.



To download software and for more information please visit www.altiris.com/Products/DeploymentSolution/hpthinclients.aspx.

TIPS AND TRICKS

DHCP TAG AUTOMATION (ZERO TOUCH CONFIGURATION)

User interface	Tag 192	Language and keyboard	ThinPro UI language and keyboard can be automatically changed from English to other languages by configuring DHCP Tag 192 as a string with a value of English, German, Spanish, French, Japanese or Simplified Chinese.
Management	Tag 190	Altiris Server	Altiris is disabled by default on ThinPro. It can be activated automatically if the local area network DHCP server provides Altiris server information through DHCP Tag 190.
	Tag 137	ezUpdate / Stateless	ezUpdate server information can be provided by configuring DHCP Tag as 137 on the DHCP server. Enter your own user name, password, server and path in this order: ftp://username:password@server/path.
Connections	Tag 191	Citrix Desktop Appliance (CDA)	CDA mode can be enabled by configuring DHCP Tag 191 as a string whose value is the URL to the Citrix environment.
Time related	Tag 42	Time Servers	This tag is a list of NTP Time Server addresses.
	Tag 101	Time zone Code [tcode] (Best)	Unix®-style time zones, such as "Africa/Algiers"
	Tag 100	Time zone Code [pcode] (Better)	Posix-style time zones, IEEE 1003.1 format, e.g., "EST5EDT4,M3.2.0/02:00,M11.1.0/02:00"
	Tag 2	Time-Offset (Okay)	Twos-complement offset in seconds from UTC, e.g., "0xffff9d90"

KEYBOARD SHORTCUTS

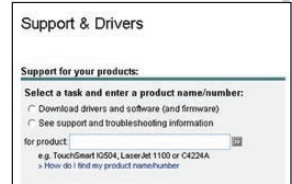
CTRL+ALT+END	Minimize all ThinPro windows except the Control Center
CTRL+ALT+TAB	Cycle between active connection and the HP ThinPro Control Center
CTRL+ALT+SHIFT+S	Start HP ThinPro Shutdown Dialog which allows you to switch to Administrator Mode when no UI is available
CTRL+ESC	Open the Start Menu (when taskbar is available)

DOWNLOADING AND INSTALLING THE LATEST OS OR DRIVERS

HP provides periodic updates and add-ons for thin client images.

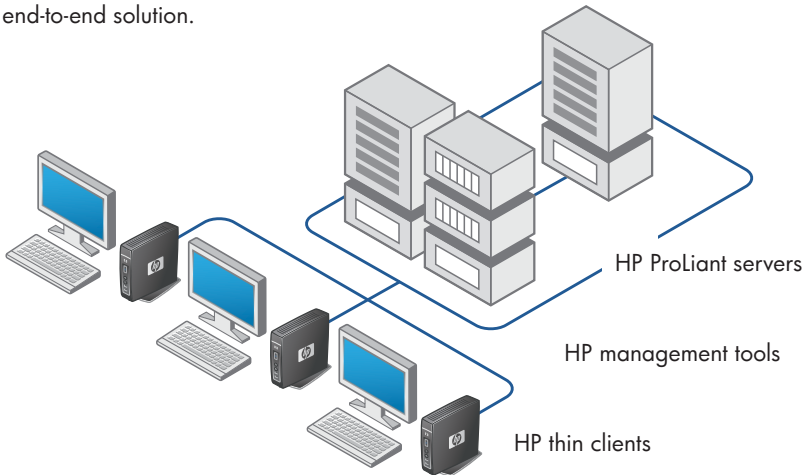
To obtain the latest OS image, drivers, BIOS and add-ons:

1. Visit <http://www.hp.com/support>.
2. Select your country or region.
3. Click **Download drivers and software (and firmware)**.
4. In the "for product" field, enter the thin client model number (i.e., t5545, t5145).
5. Select and download the appropriate software.
6. Select **Save** to network or local USB key.
7. **Run** the .exe.
8. Follow on-screen wizard to install/download package.



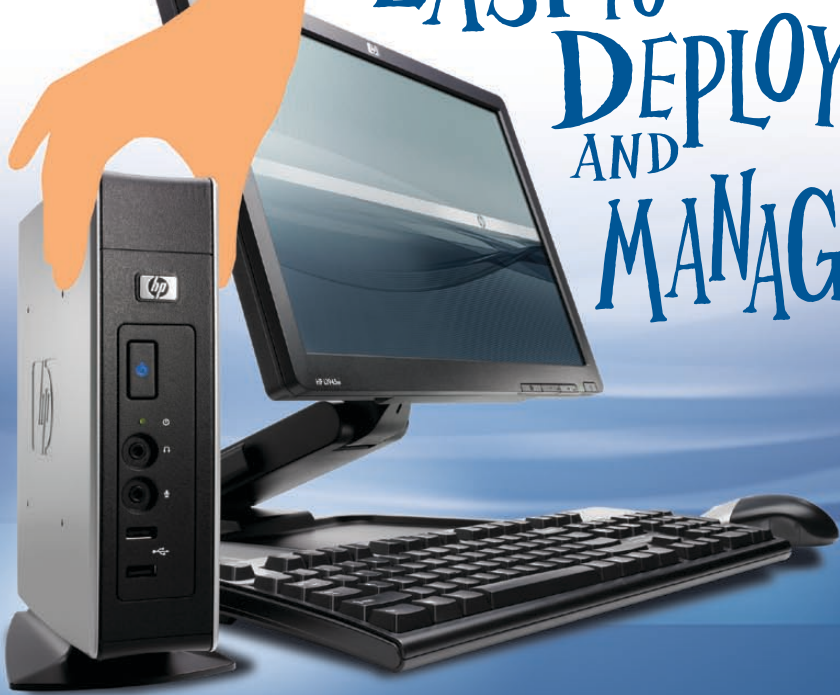
THE HP ADVANTAGE

HP provides the complete end-to-end solution.





EASY TO DEPLOY AND MANAGE



To learn more, visit
www.hp.com/support/manuals/thinclients

© Copyright 2009 Hewlett-Packard Development Company, L.P. The information contained herein is subject to change without notice. The only warranties for HP products and services are set forth in the express warranty statements accompanying such products and services. Nothing herein should be construed as constituting an additional warranty. HP shall not be liable for technical or editorial errors or omissions contained herein. UNIX is a registered trademark of The Open Group.

