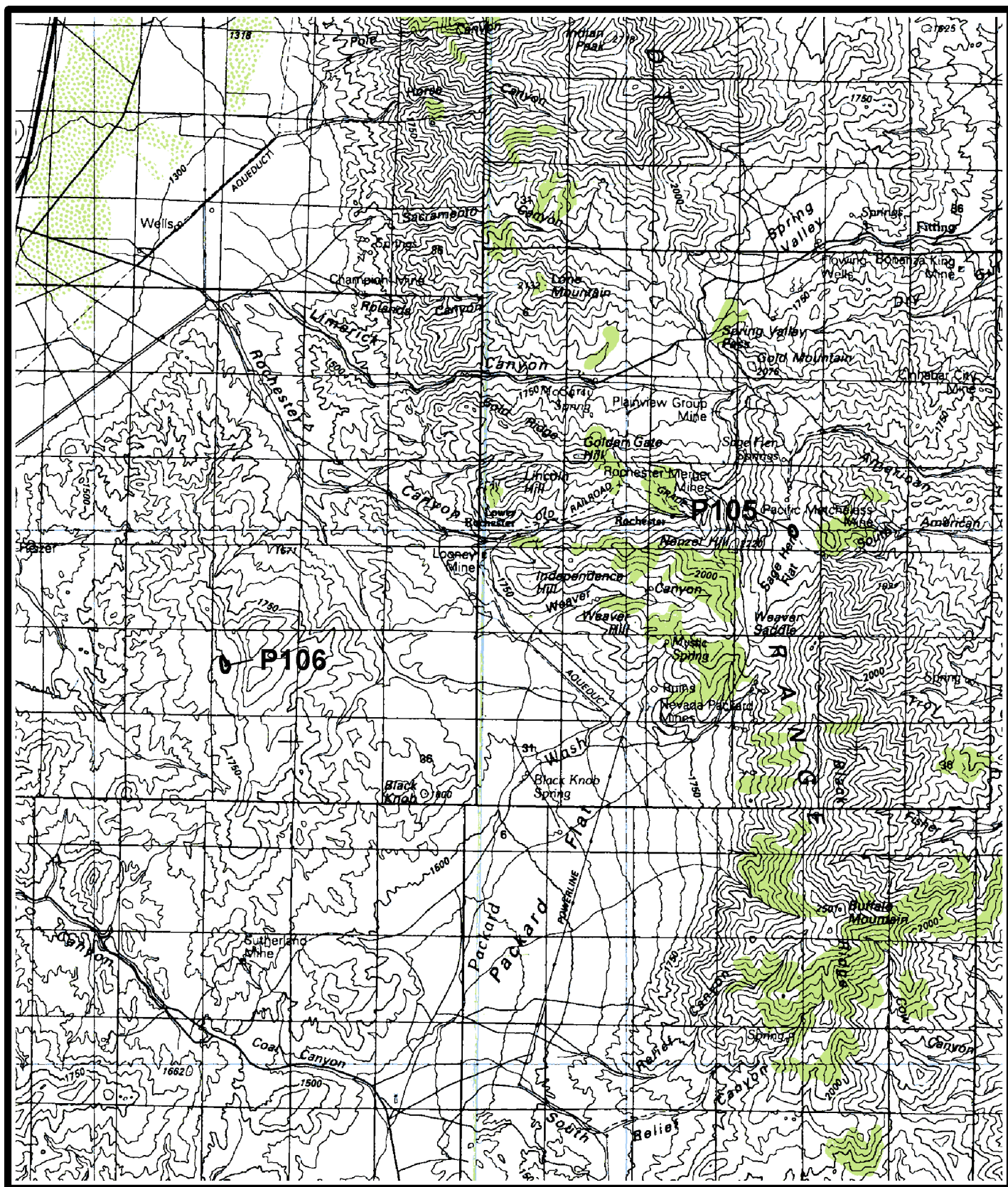
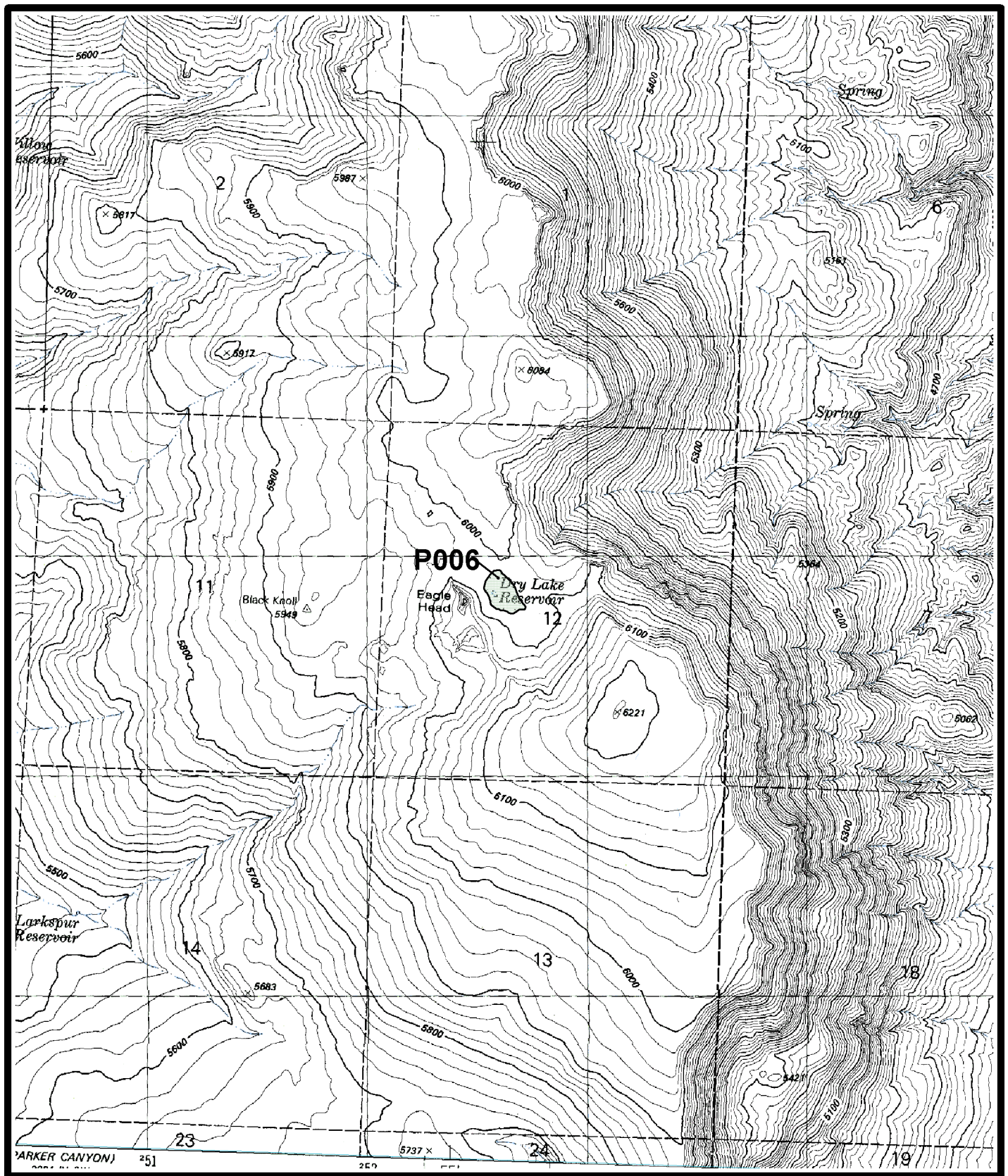


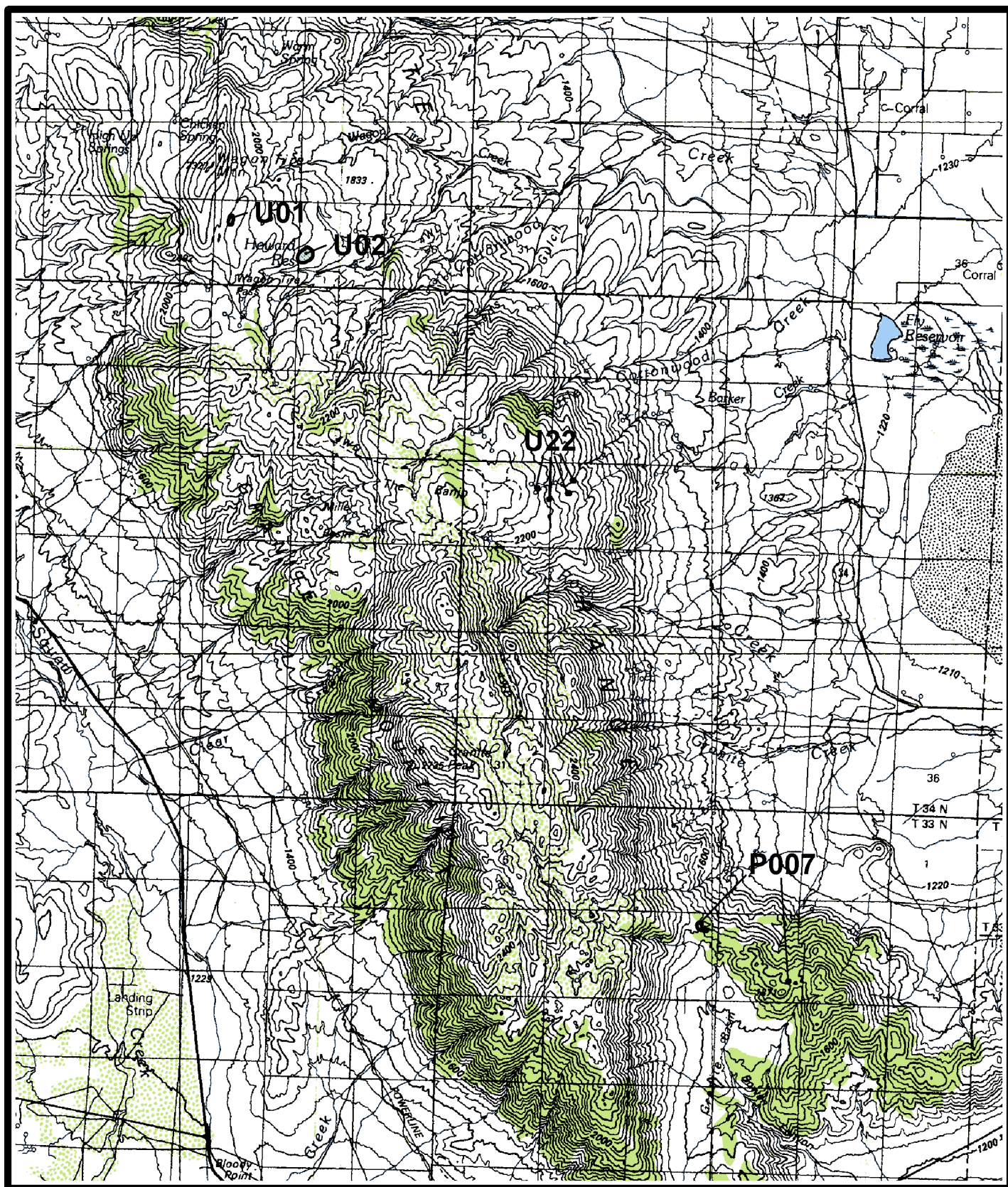
Map 38. Seven Lakes area. *Polytenuum williamsiae* potential sites P102-P104, and *Polytenuum fremontii* estimated site F06, Reno 1:100,000 quadrangle, Washoe County, Nevada.



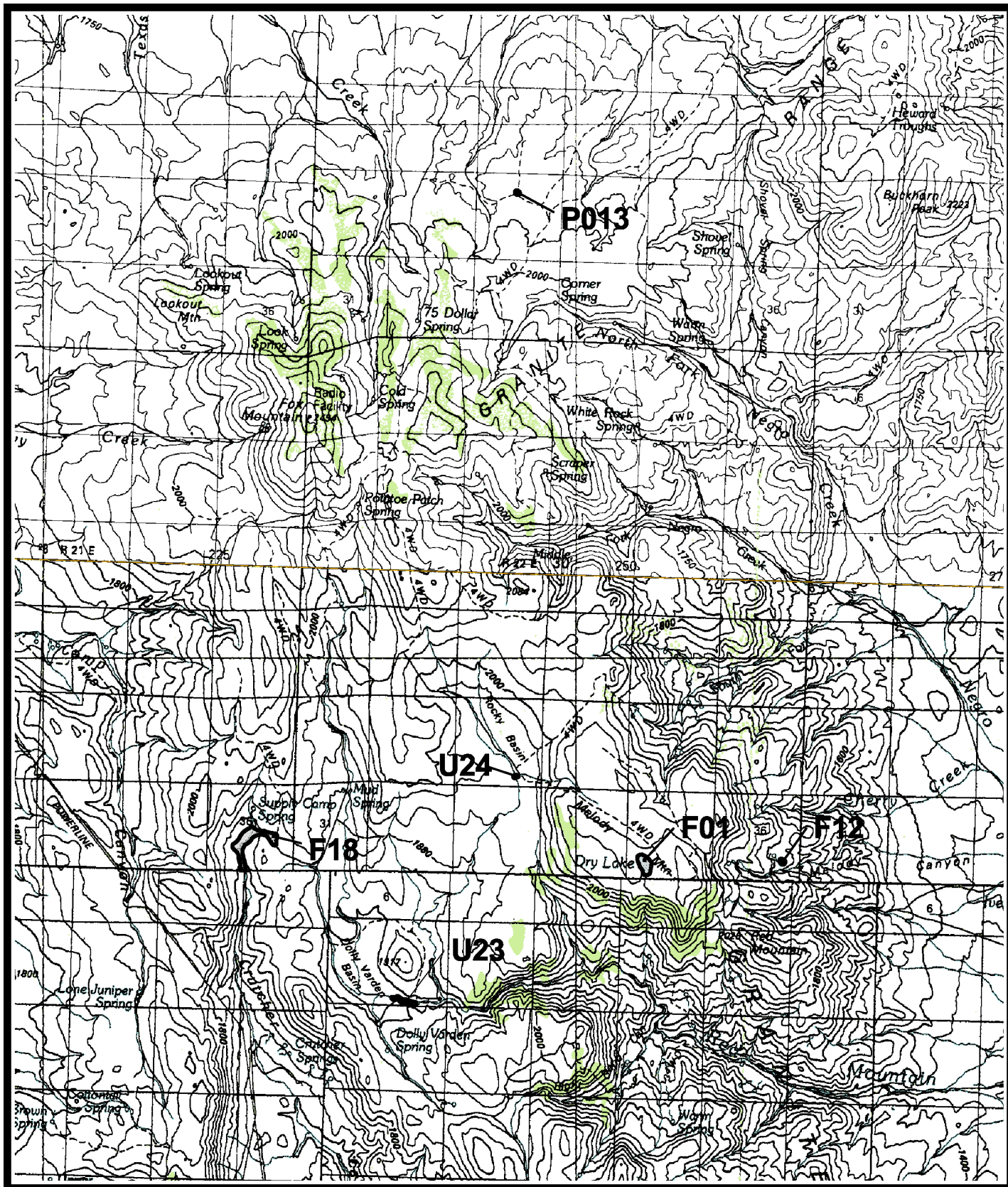
Map 39. Packard Flat area. *Polycytenium williamsiae* potential sites P105-P106, Lovelock 1:100,000 quadrangle, Pershing County, Nevada.



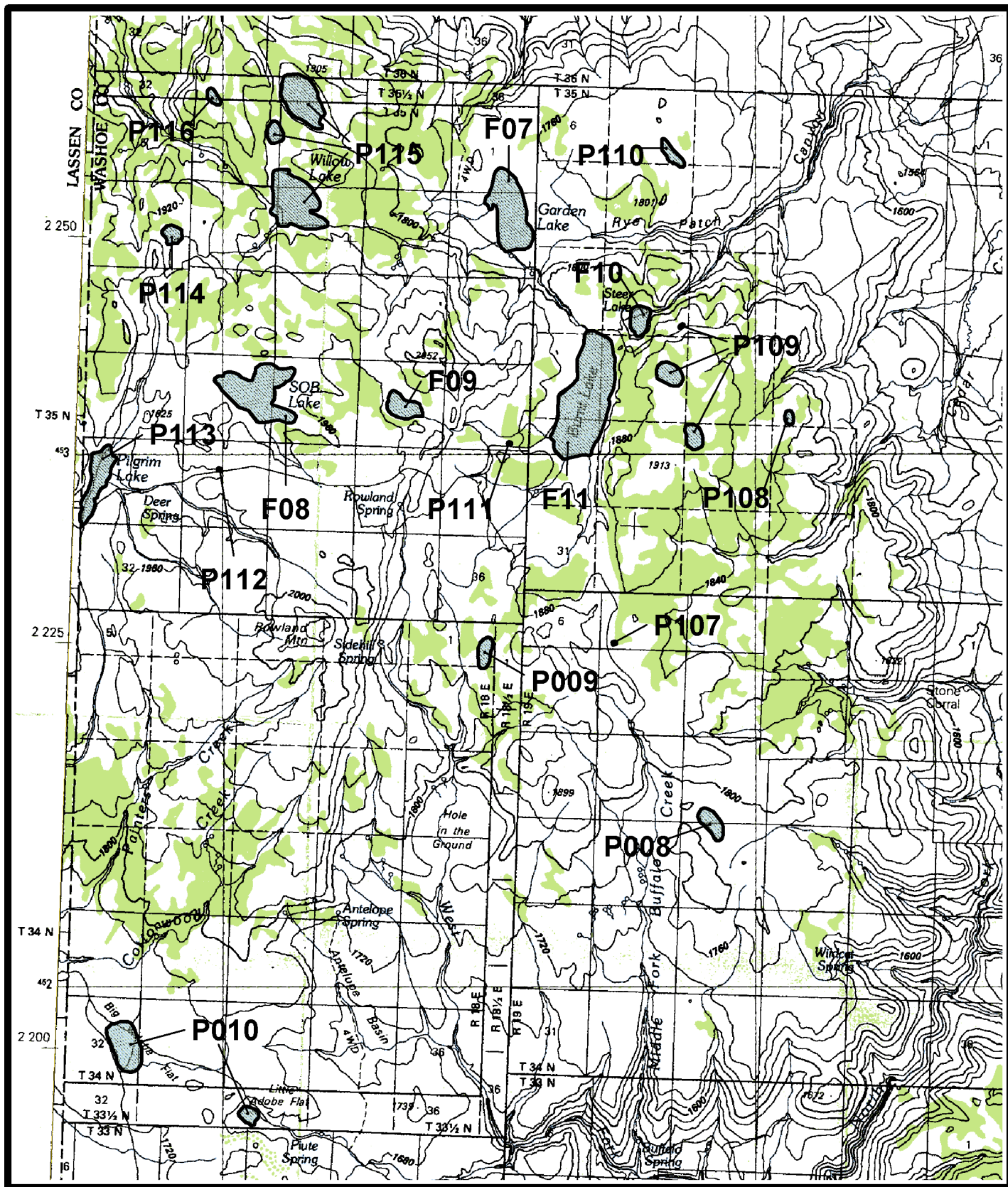
Map 40. Dry Lake Reservoir area. *Polycytenium williamsiae* potential site P006, Red Rock Canyon 1:24,000 quadrangle, Washoe County, Nevada.



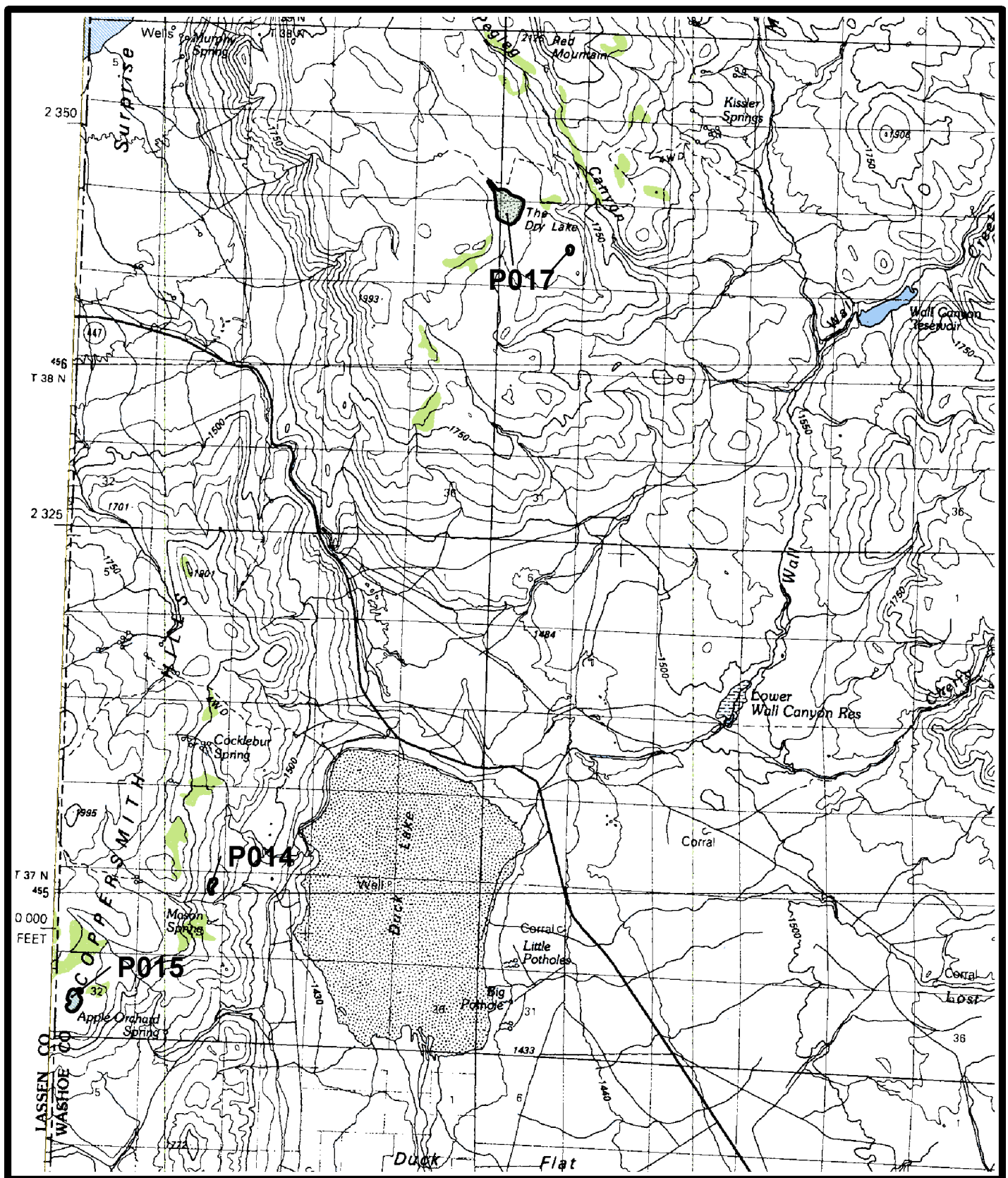
Map 41. Granite Range area. *Polytenuum williamsiae* unoccupied sites U01-U02, U22, and potential site P007, Gerlach 1:100,000 quadrangle, Washoe County, Nevada.



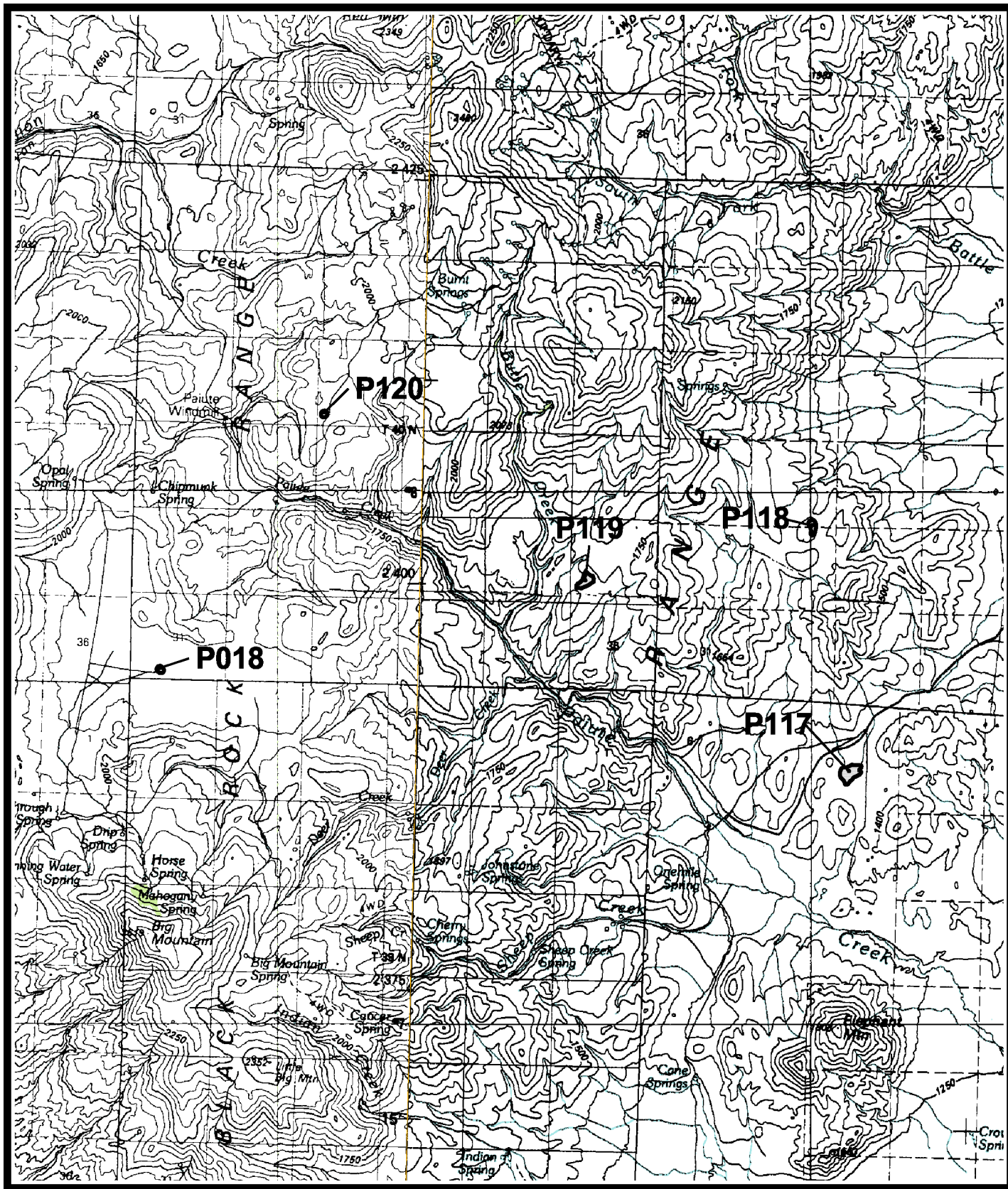
Map 42. Melody Mountain area. *Polycatenium williamsiae* unoccupied sites U23-U24, and potential site P013, and *Polycatenium fremontii* estimated sites F01, F12, F18, Gerlach and High Rock Canyon 1:100,000 quadrangles, Washoe County, Nevada.



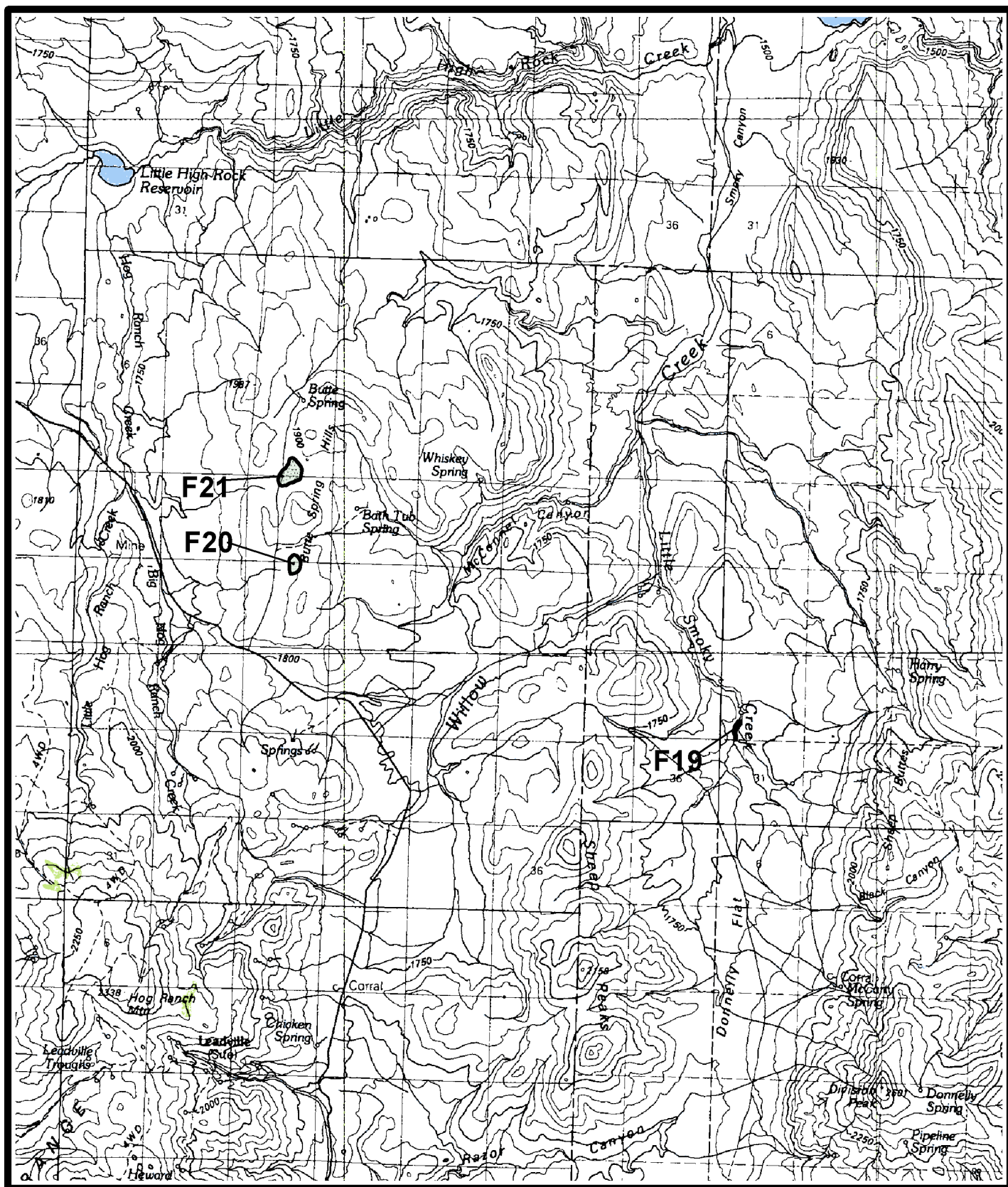
Map 43. Burnt Lake area. *Polytenuum williamsiae* potential sites P008-P010, P107-P116, and *Polytenuum fremontii* estimated sites F07-F11, Gerlach 1:100,000 quadrangle, Washoe County, Nevada, and Lassen County, California.



Map 44. Duck Lake area. *Polytenuum williamsiae* potential sites P014-P015, P017, High Rock Canyon 1:100,000 quadrangle, Washoe County, Nevada.



Map 45. Black Rock Range area. *Polytenuum williamsiae* potential sites P018, P117-P120, High Rock Canyon and Jackson Mountains 1:100,000 quadrangles, Humboldt County, Nevada.



Map 46. Butte Spring Hills area. *Polycstenium fremontii* estimated sites F19-F21, High Rock Canyon 1:100,000 quadrangle, Washoe and Humboldt counties, Nevada.