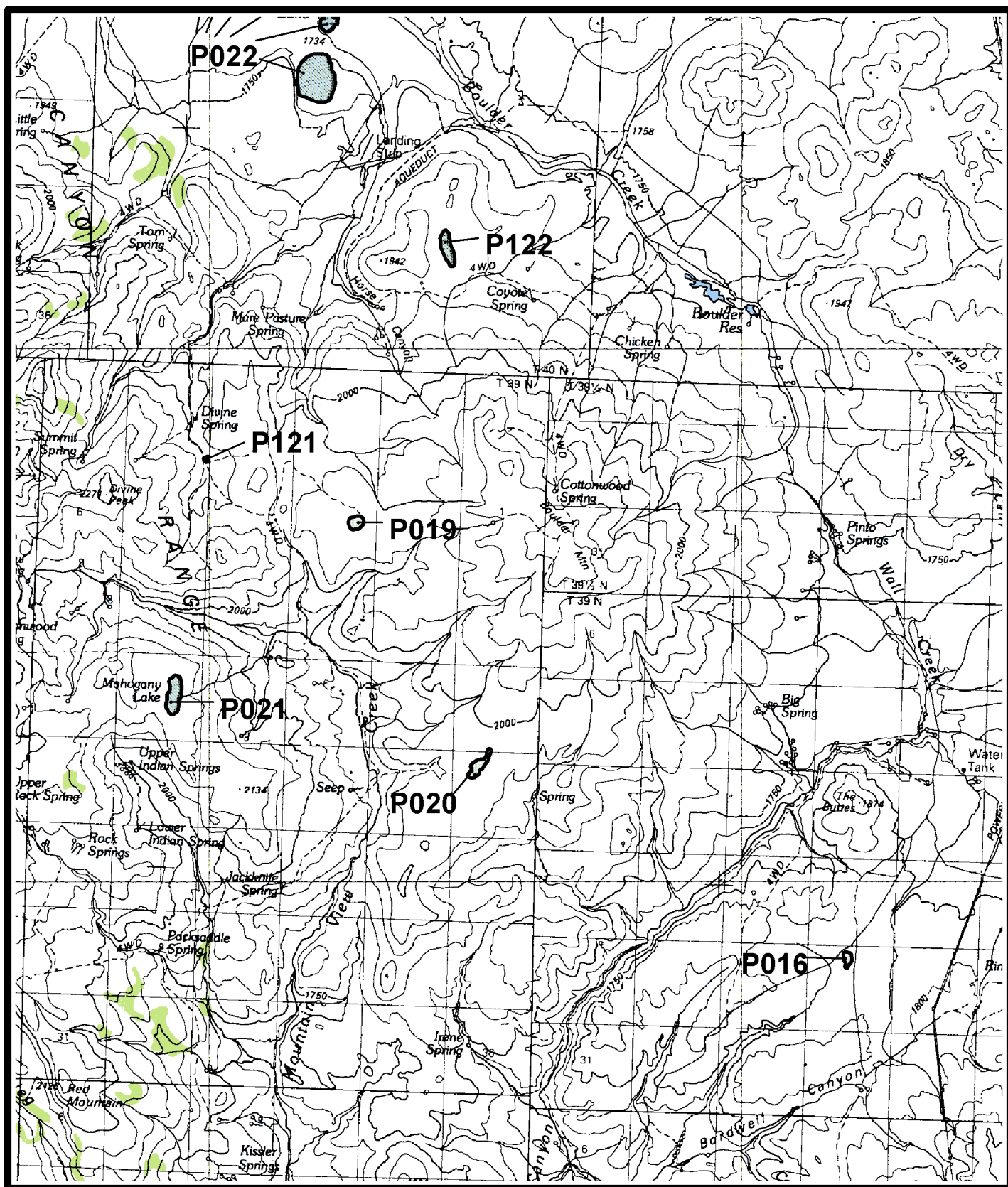
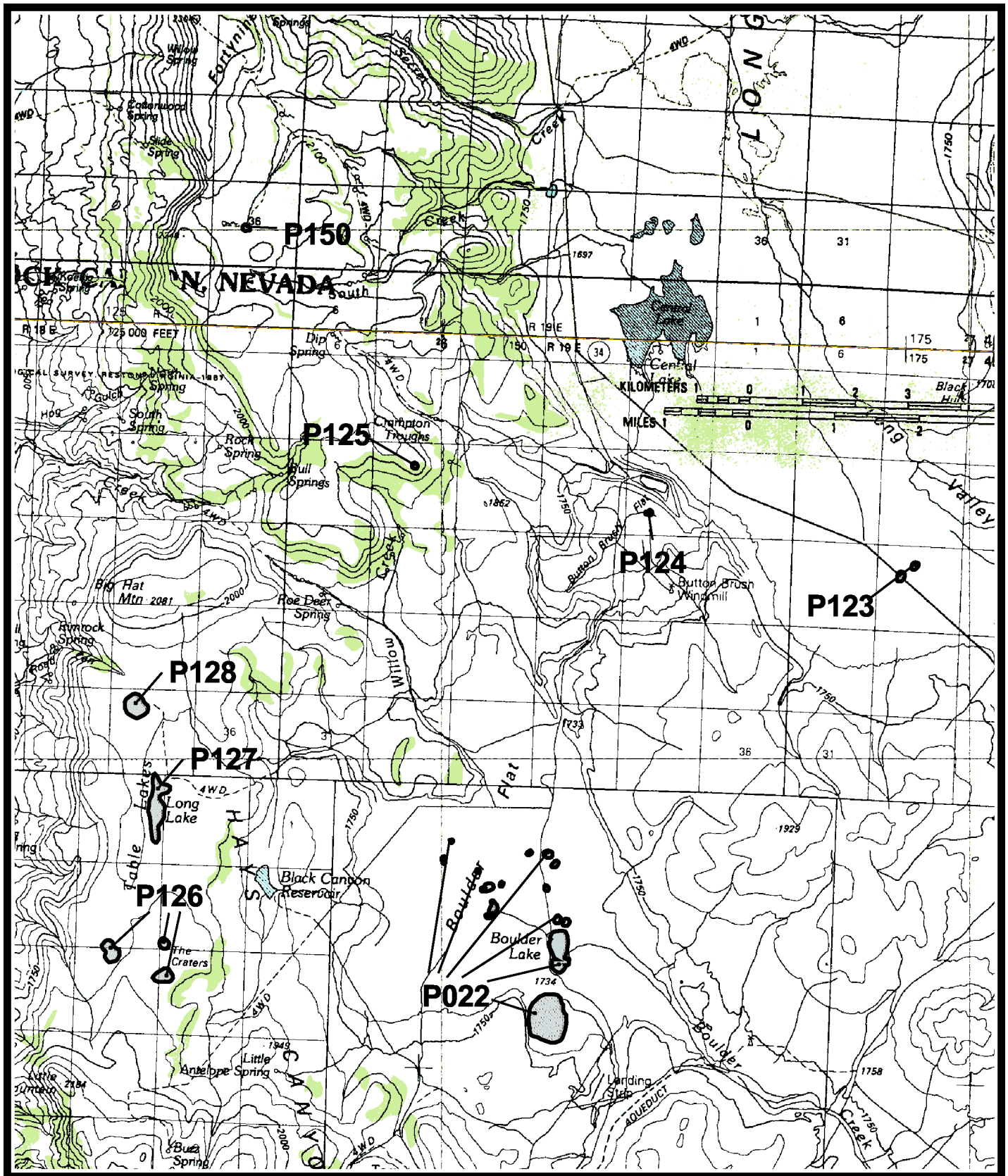


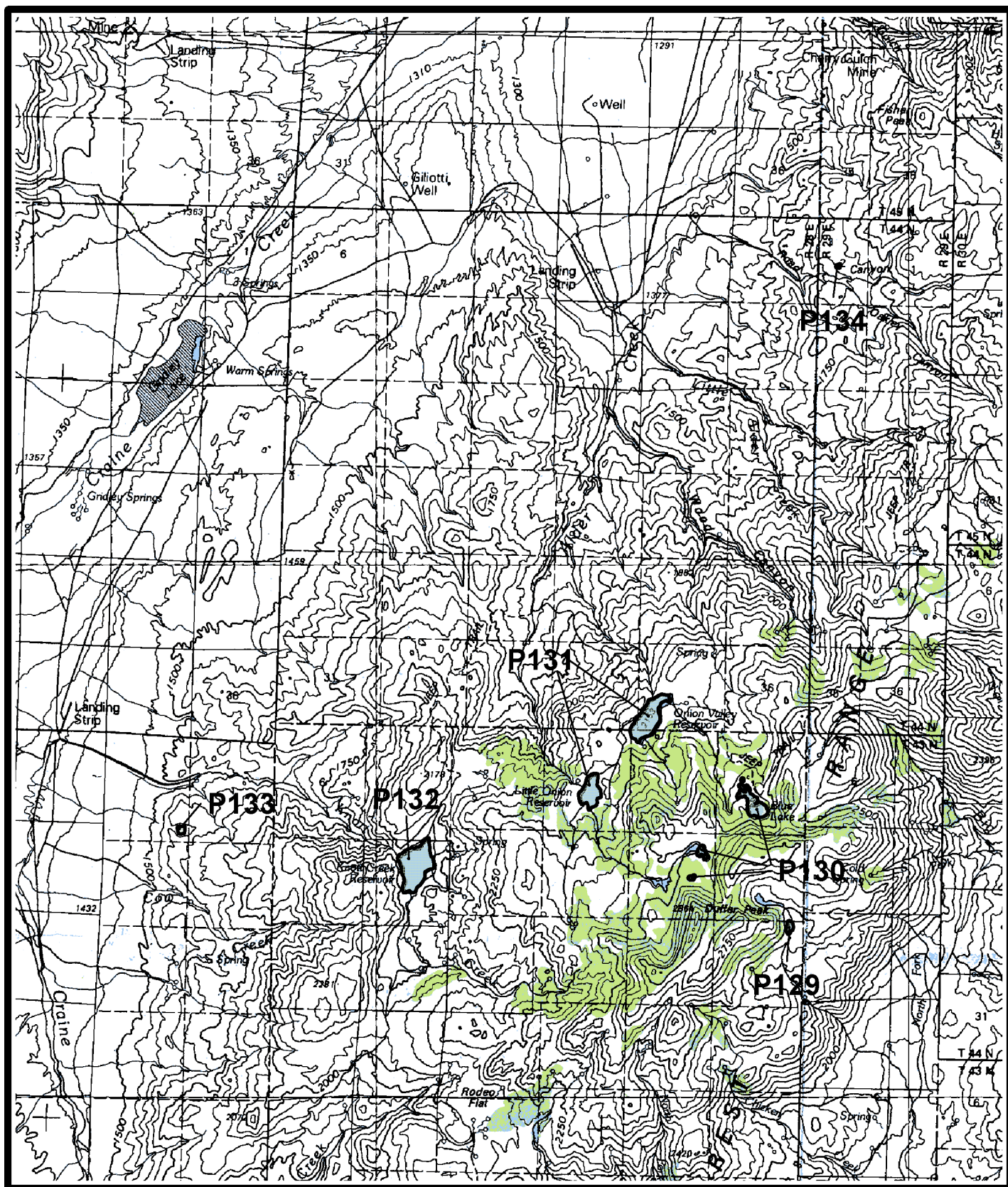
Map 47. High Rock Lake area. *Polytenuum fremontii* estimated sites F13-F14, F22, High Rock Canyon 1:100,000 quadrangle, Washoe and Humboldt counties, Nevada.



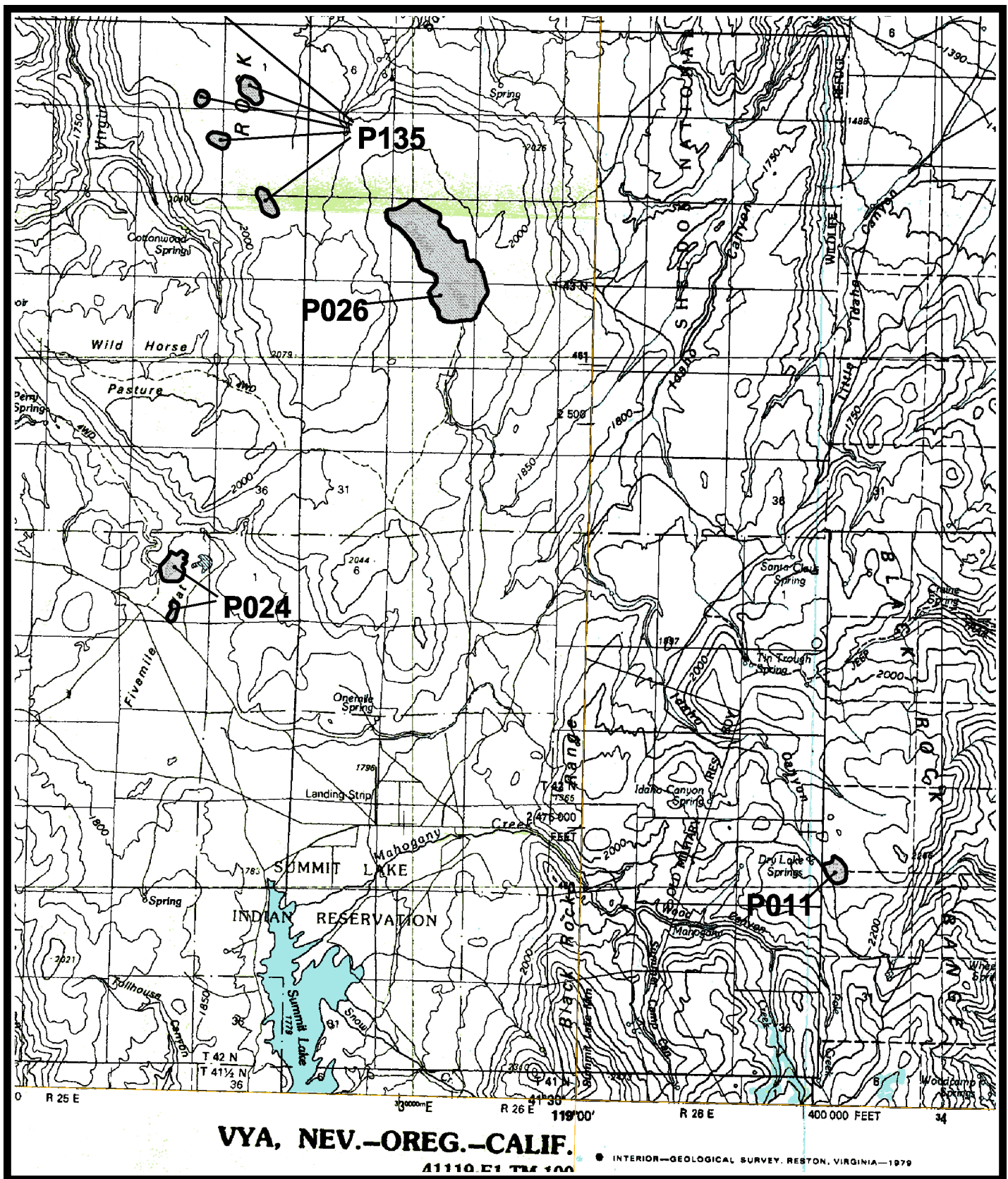
Map 48. Mahogany Lake area. *Polytenuum williamsiae* potential sites P016, P019-P022, P121-P122, High Rock Canyon 1:100,000 quadrangle, Washoe County, Nevada.



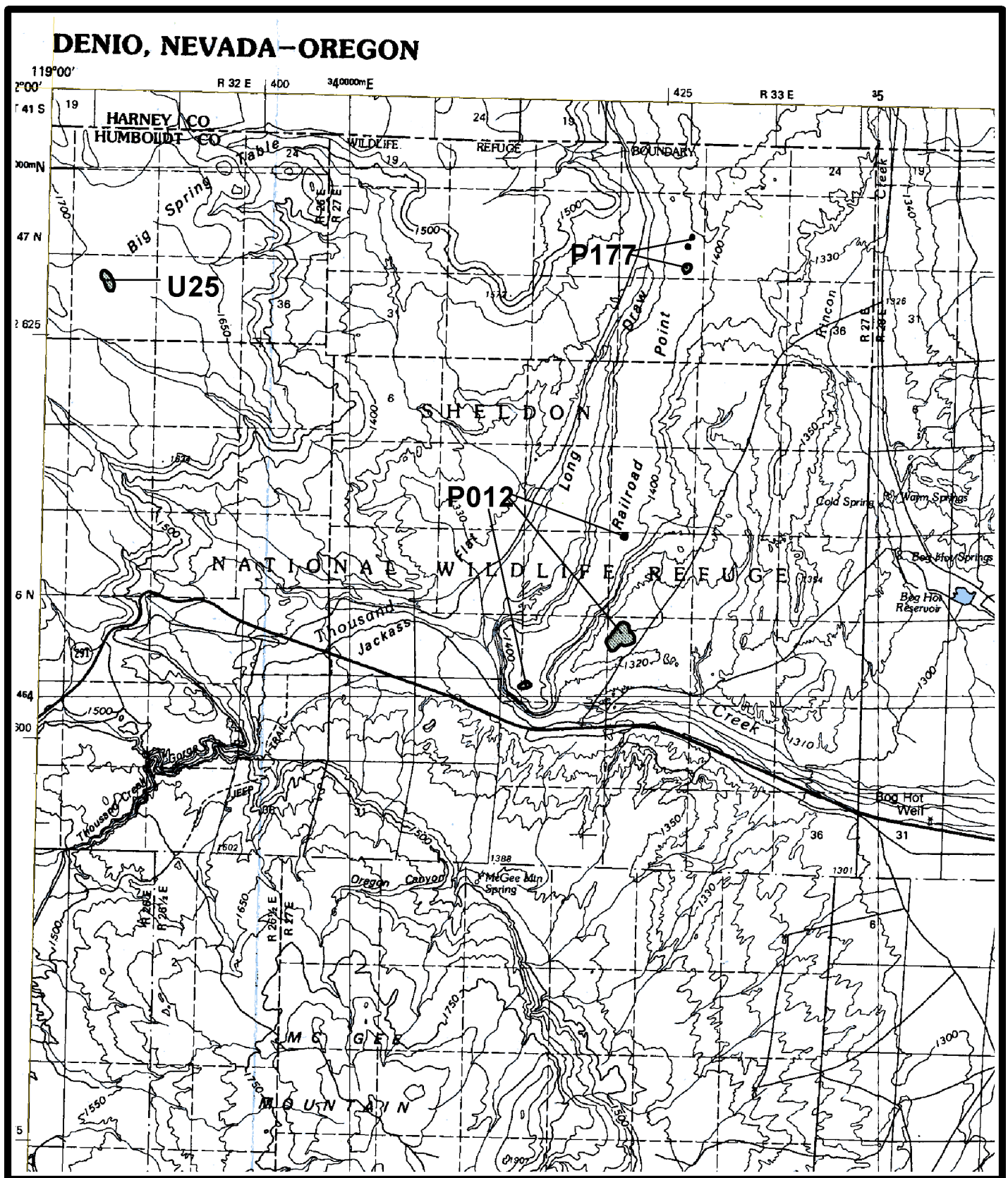
Map 49. Boulder Flat area. *Polytenuum williamsiae* potential sites P022, P123-P128, P150, High Rock Canyon and Vya 1:100,000 quadrangles, Washoe County, Nevada.



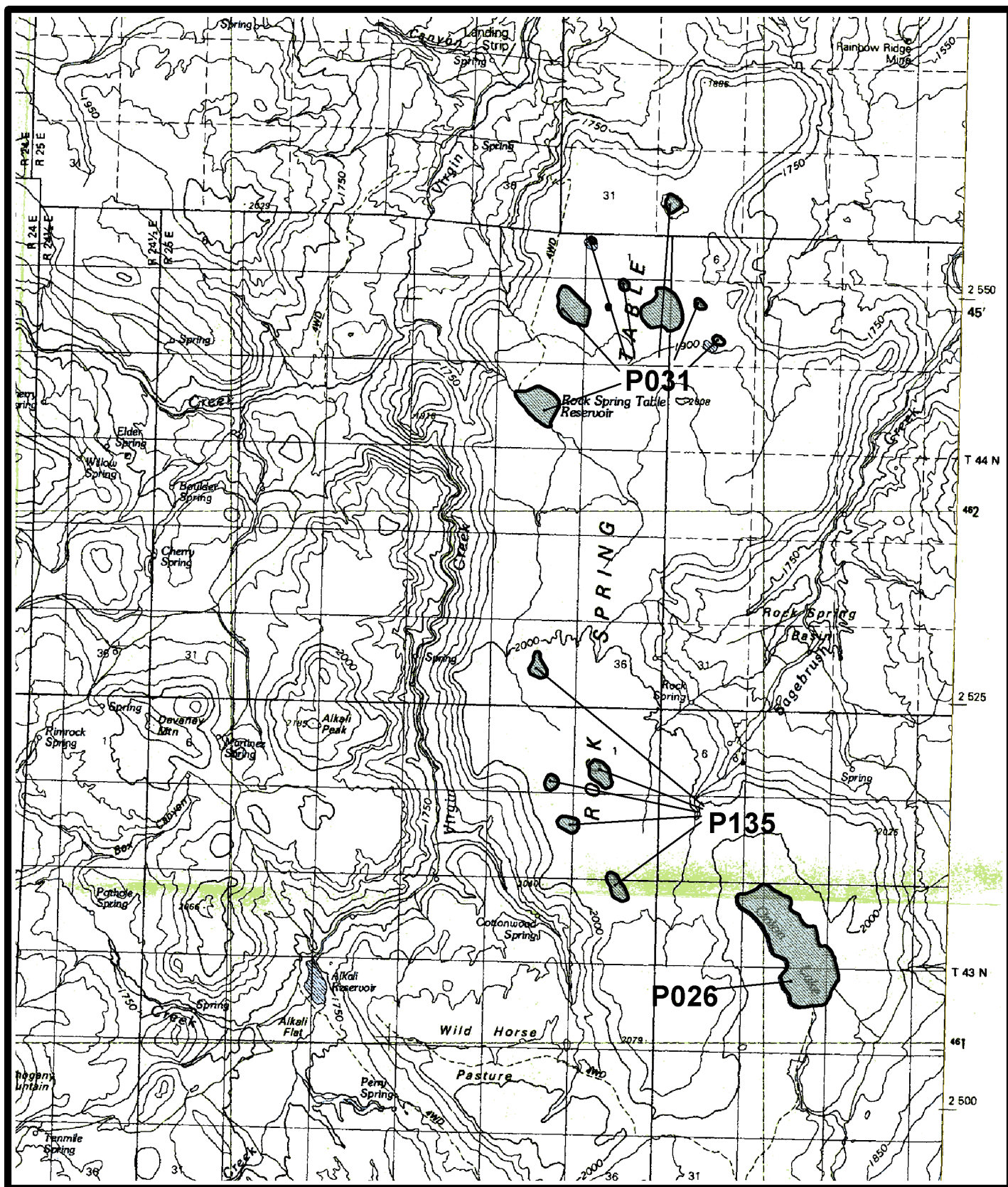
Map 50. Pine Forest Range area. *Polytenuum williamsiae* potential sites P129-P134, Denio 1:100,000 quadrangle, Humboldt County, Nevada.



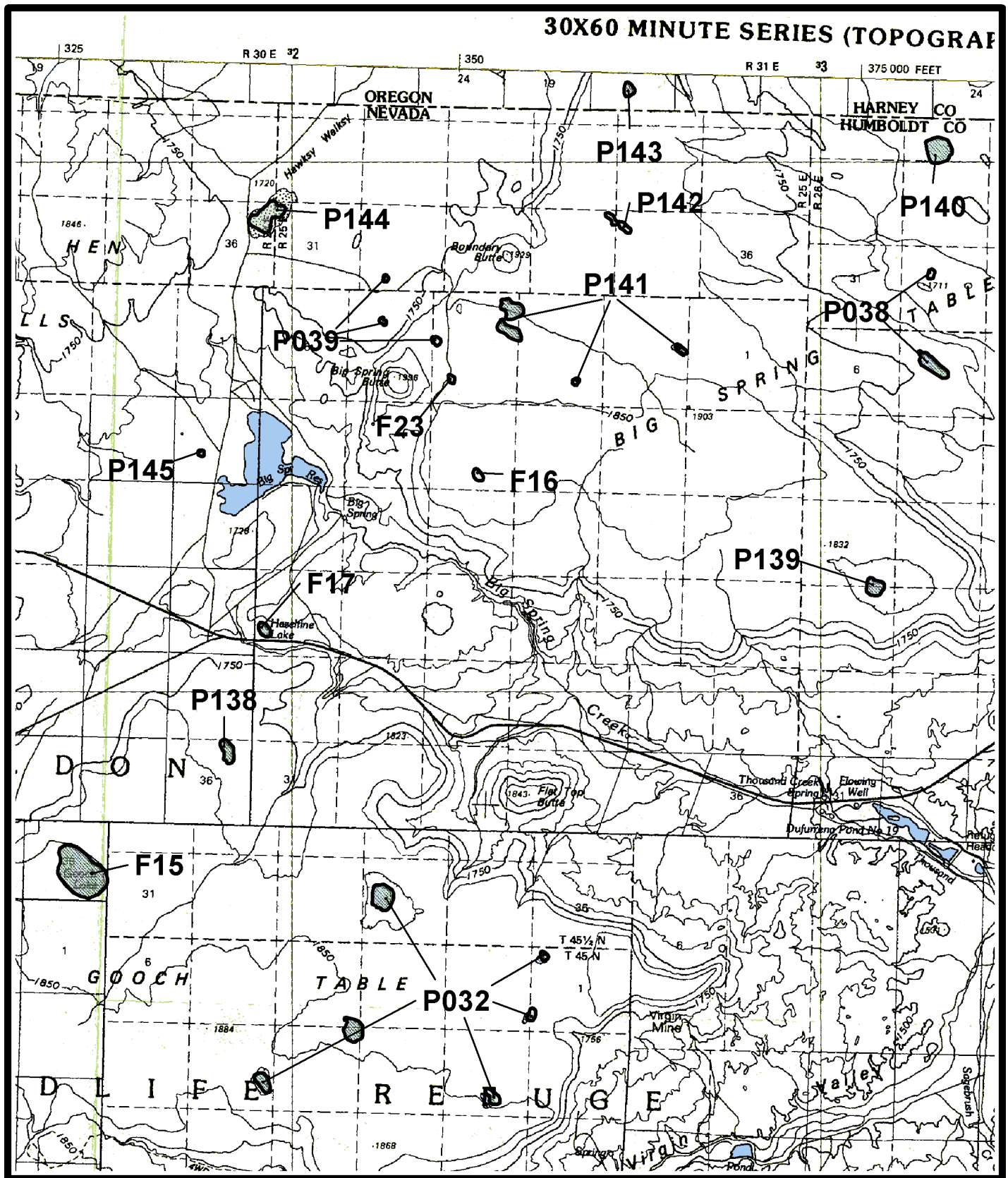
Map 51. Summit Lake area. *Polycstenium williamsiae* potential sites P011, P024, P026, P135, Denio and Vya 1:100,000 quadrangles, Humboldt County, Nevada.



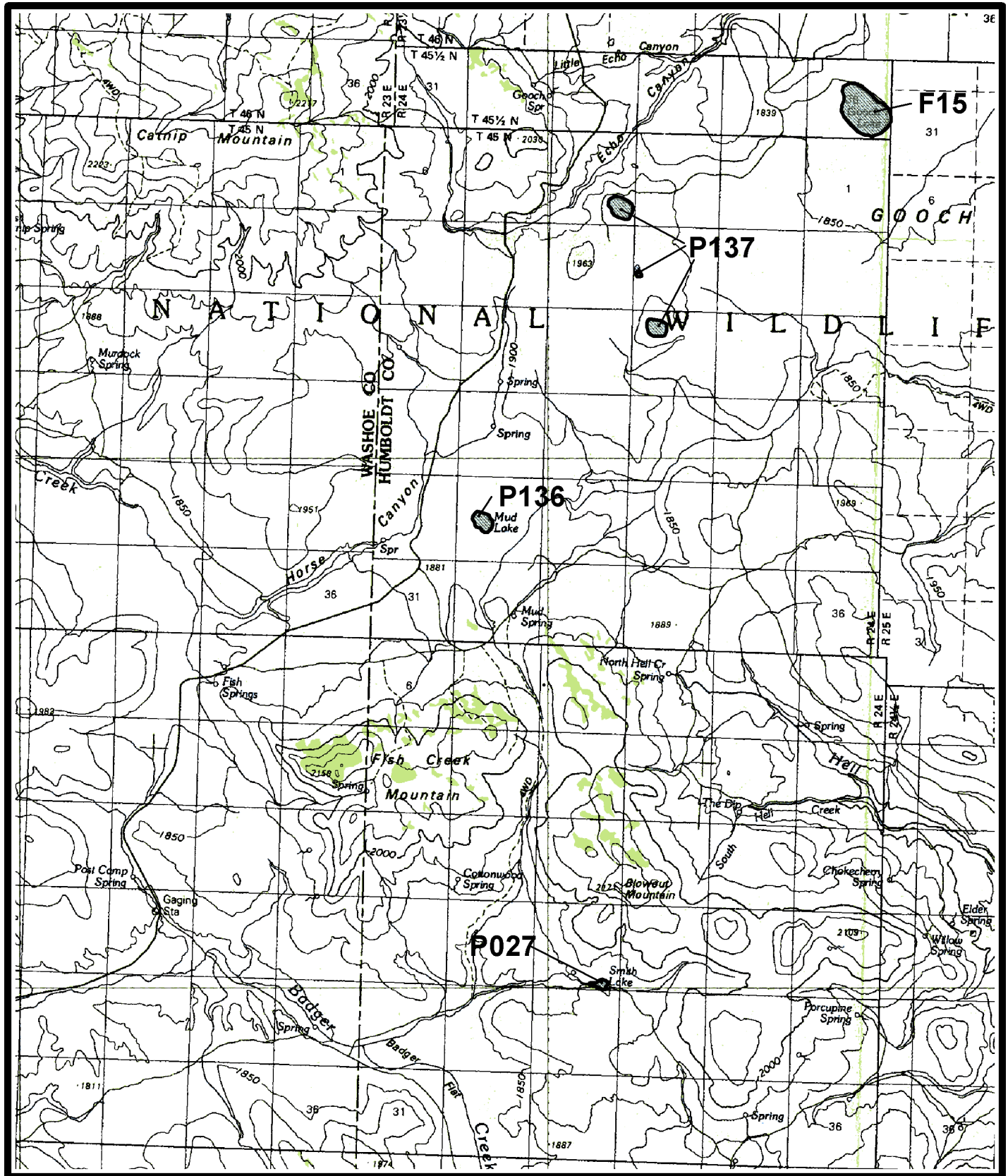
Map 52. Railroad Point area. *Polytenuum williamsiae* unoccupied site U25 and potential sites P012, P177, Denio 1:100,000 quadrangle, Humboldt County, Nevada.



Map 53. Rock Spring Table area. *Polytenuum williamsiae* potential sites P026, P031, P135, Vya 1:100,000 quadrangle, Humboldt County, Nevada.



Map 54. Big Spring Table area. *Polycytenium williamsiae* potential sites P032, P038-P039, P138-P145, and *Polycytenium fremontii* estimated sites F15-F17, F23, Vya 1:100,000 quadrangle, Humboldt County, Nevada, and Harney County, Oregon.



Map 55. Fish Creek Mountain area. *Polytenuum williamsiae* potential sites P027, P136-137, and *Polytenuum fremontii* estimated site F15, Vya 1:100,000 quadrangle, Humboldt County, Nevada.