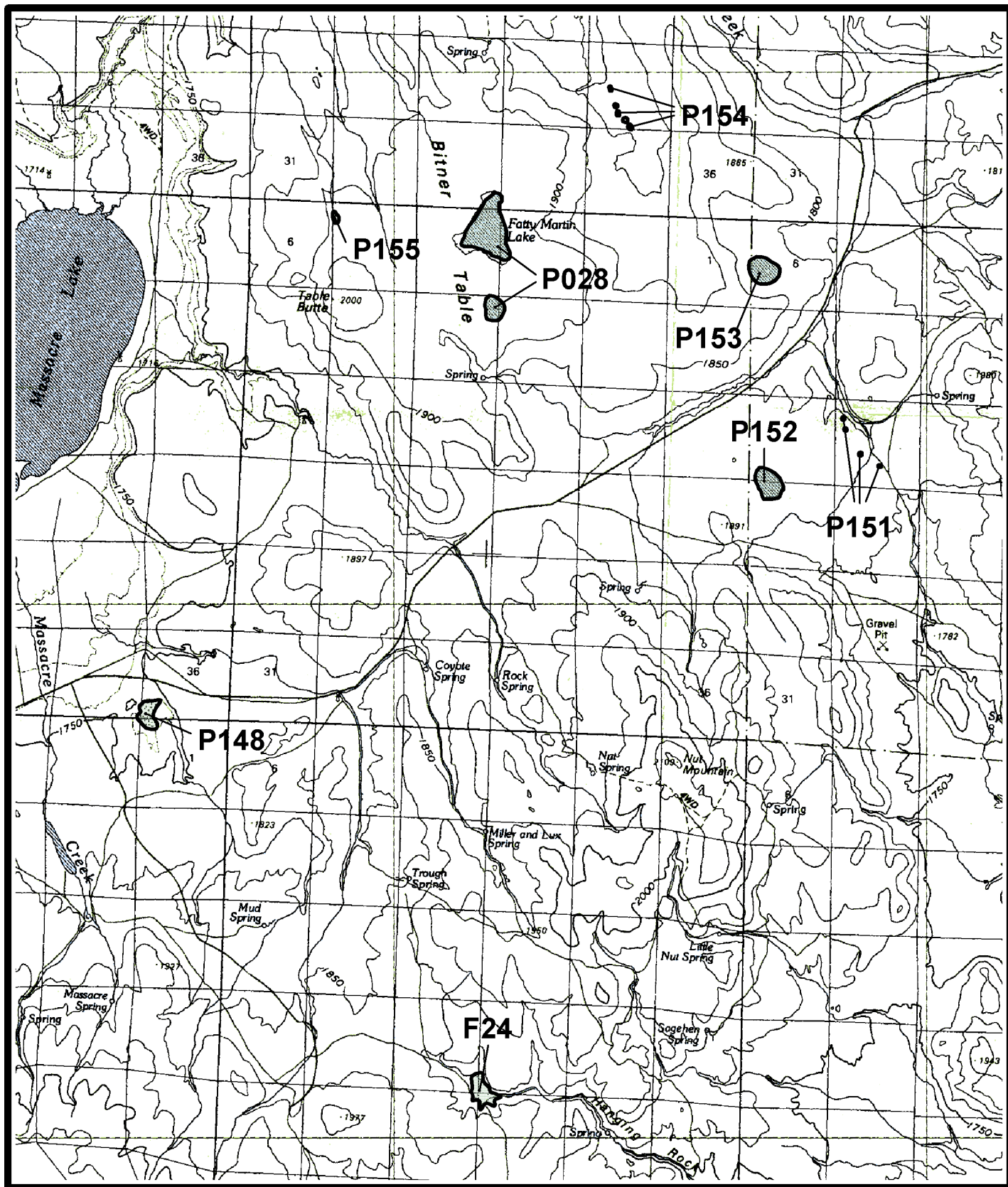
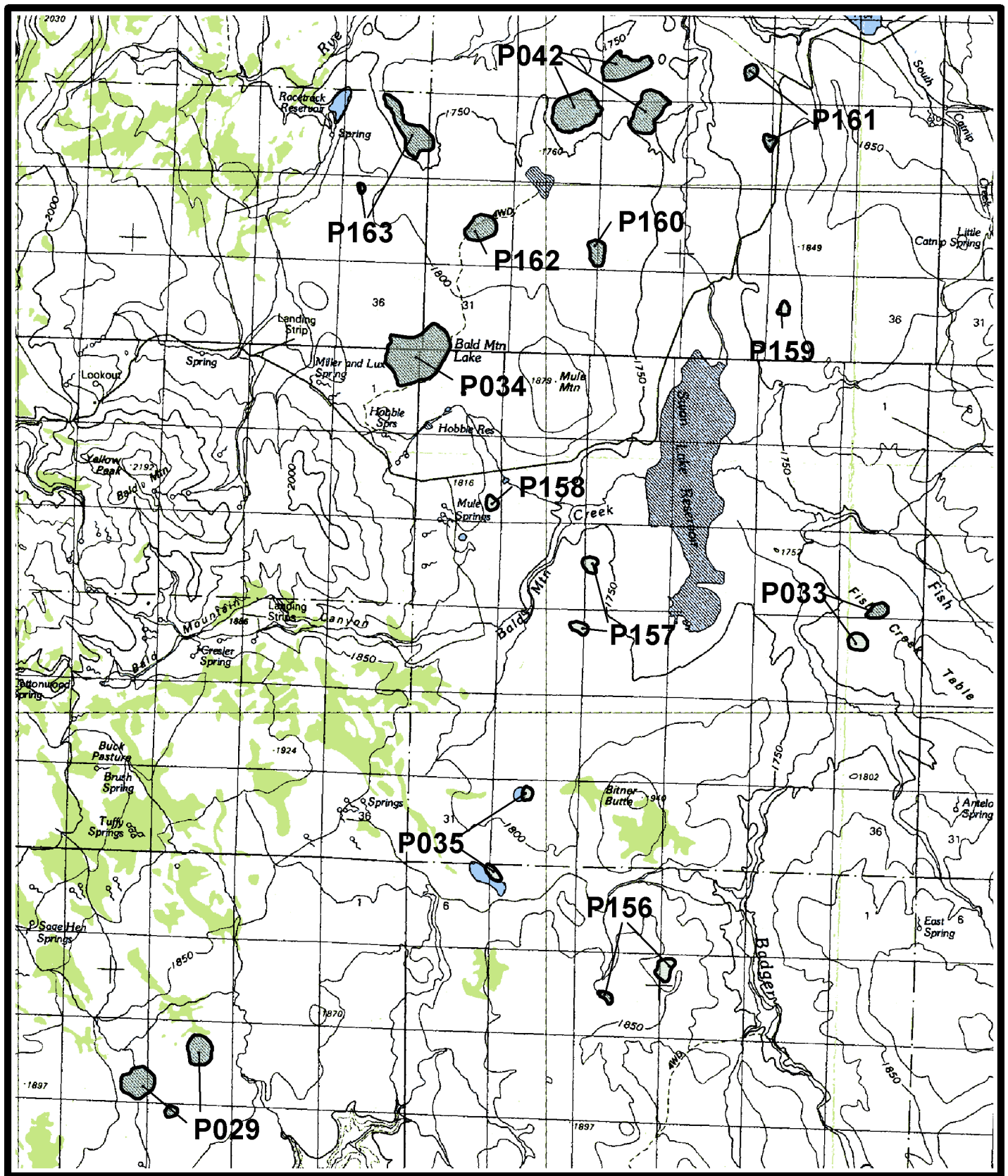


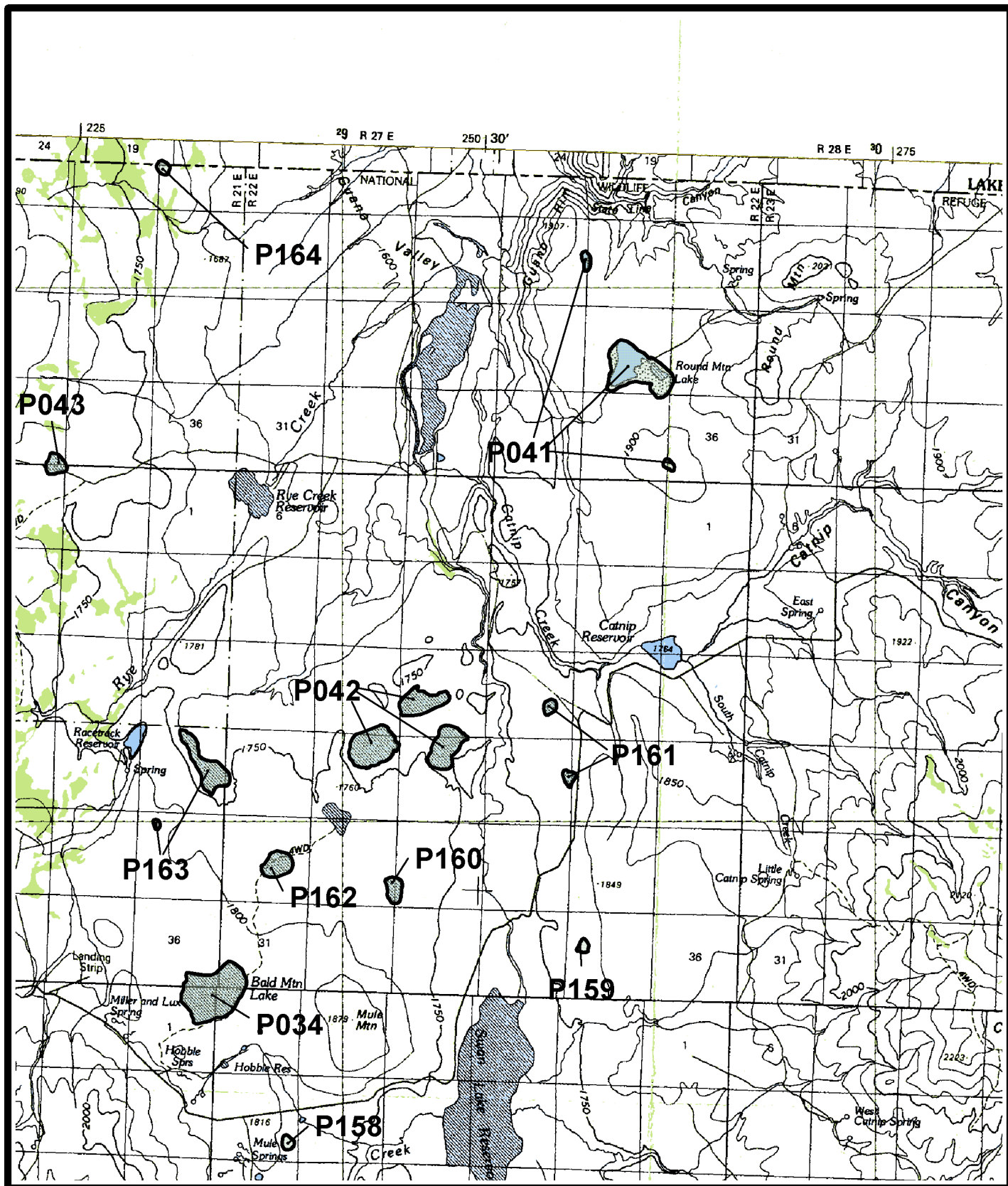
Map 56. Catnip Mountain area. *Polyctenium williamsiae* potential sites P040, P137, P146-P147, Vya 1:100,000 quadrangle, Humboldt and Washoe counties, Nevada.



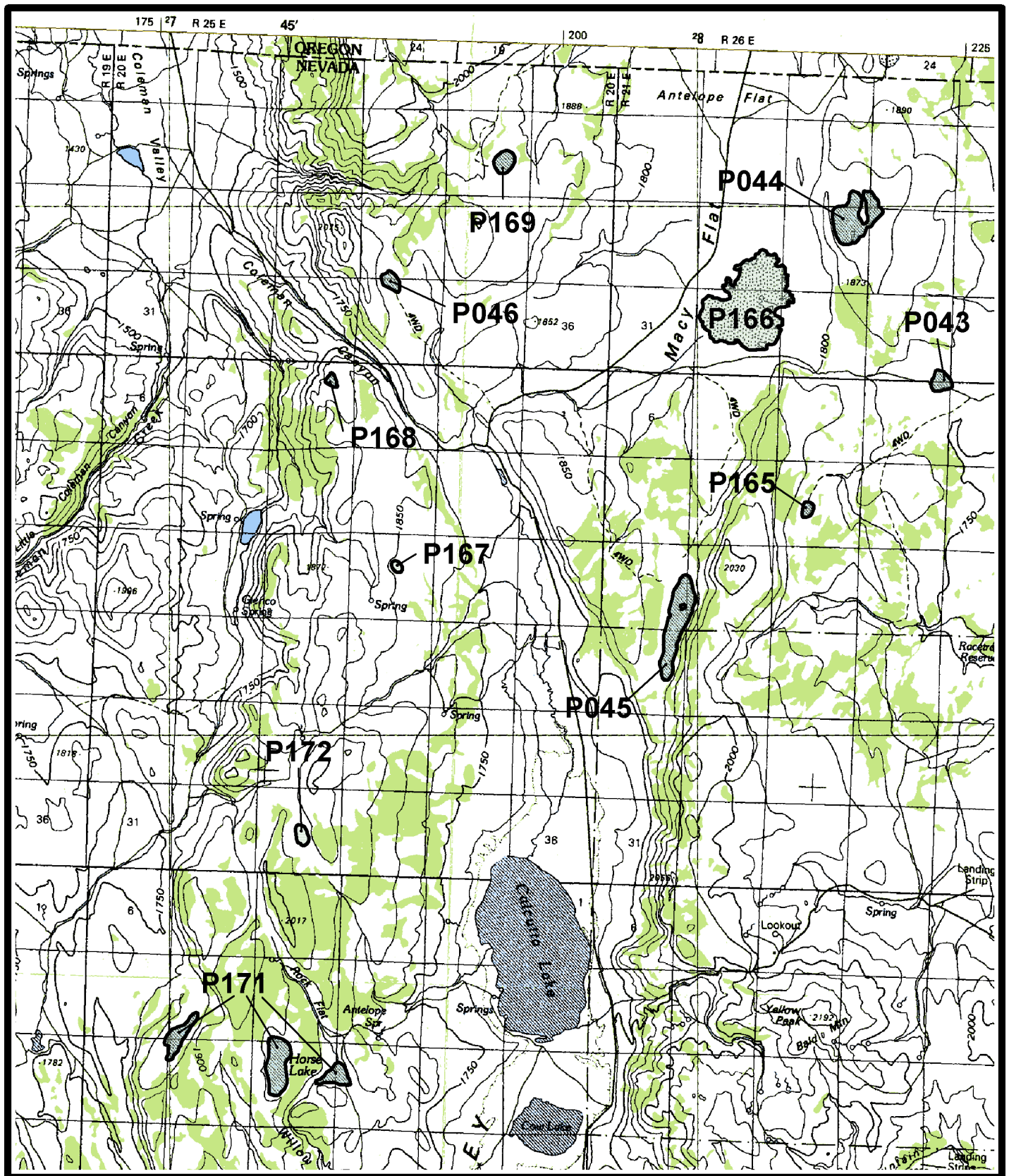
Map 57. Bitner Table area. *Polytenuum williamsiae* potential sites P028, P148, P151-P155, and *Polytenuum fremontii* estimated site F24, Vya 1:100,000 quadrangle, Washoe County, Nevada.



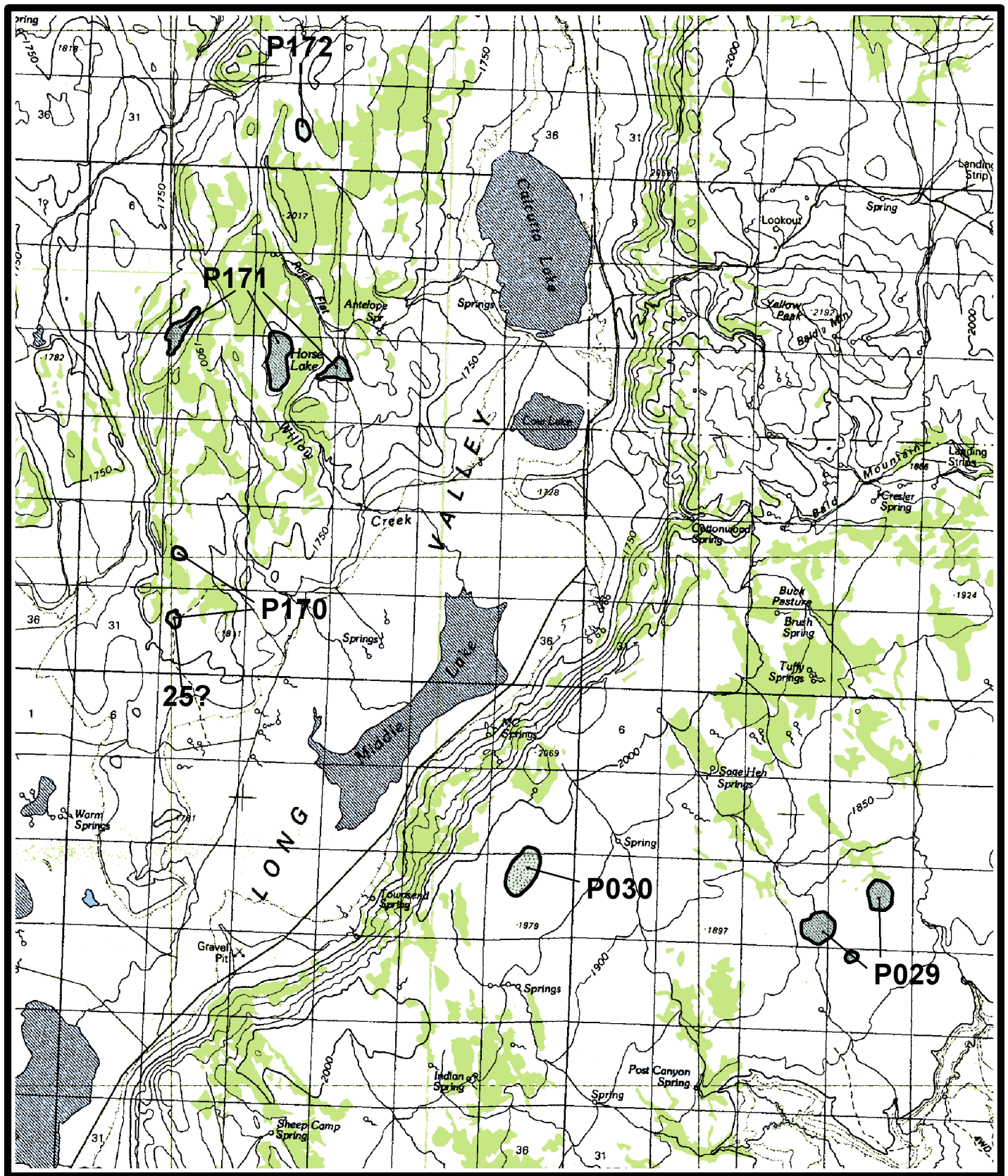
Map 58. Bitner Butte area. *Polytenuum williamsiae* potential sites P029, P033-P035, P042, P156-P163, Vya 1:100,000 quadrangle, Washoe County, Nevada.



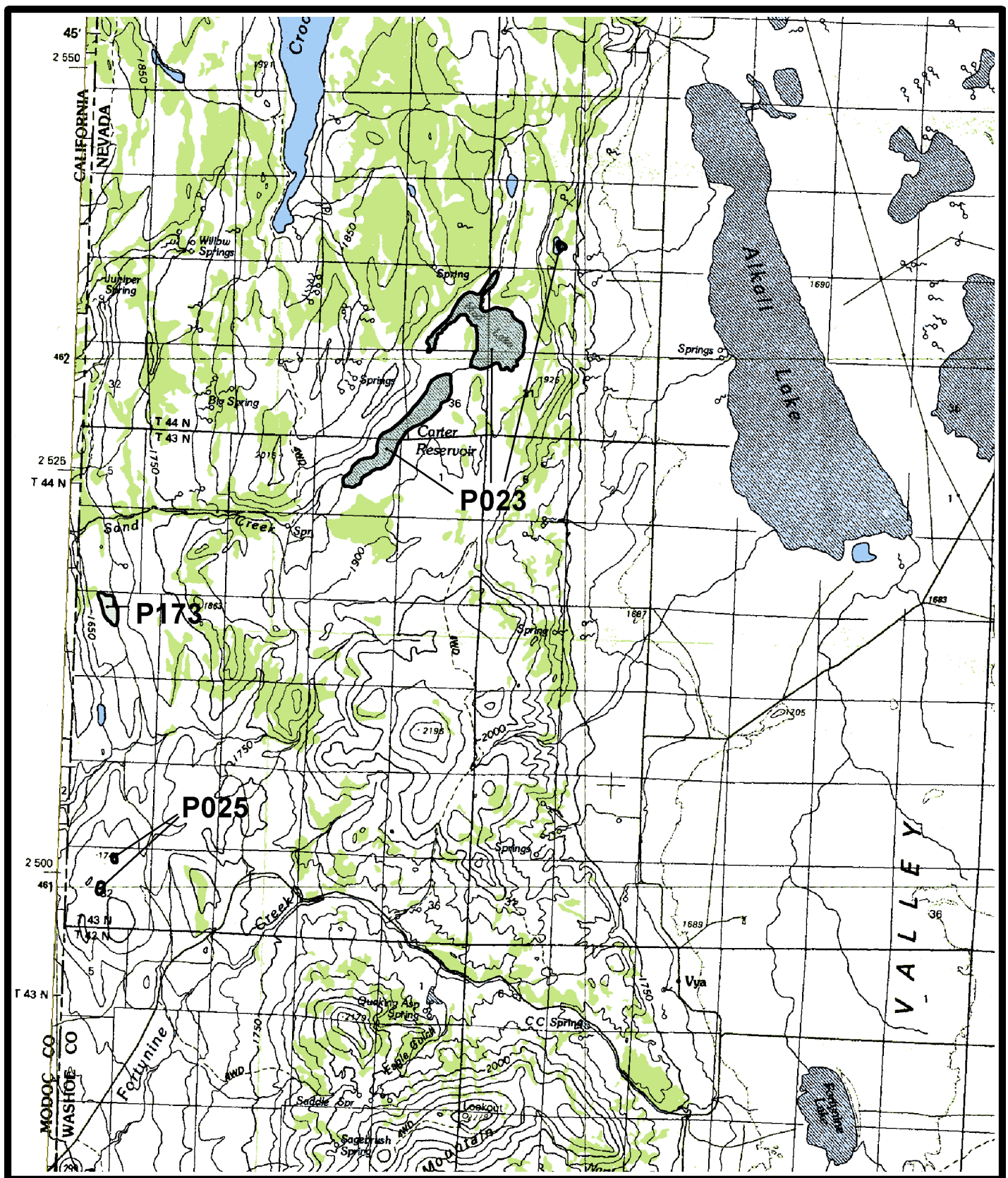
Map 59. Guano Valley area. *Polytenuum williamsiae* potential sites P034, P041-P043, P158-P164, Vya 1:100,000 quadrangle, Washoe County, Nevada, and Lake County, Oregon.



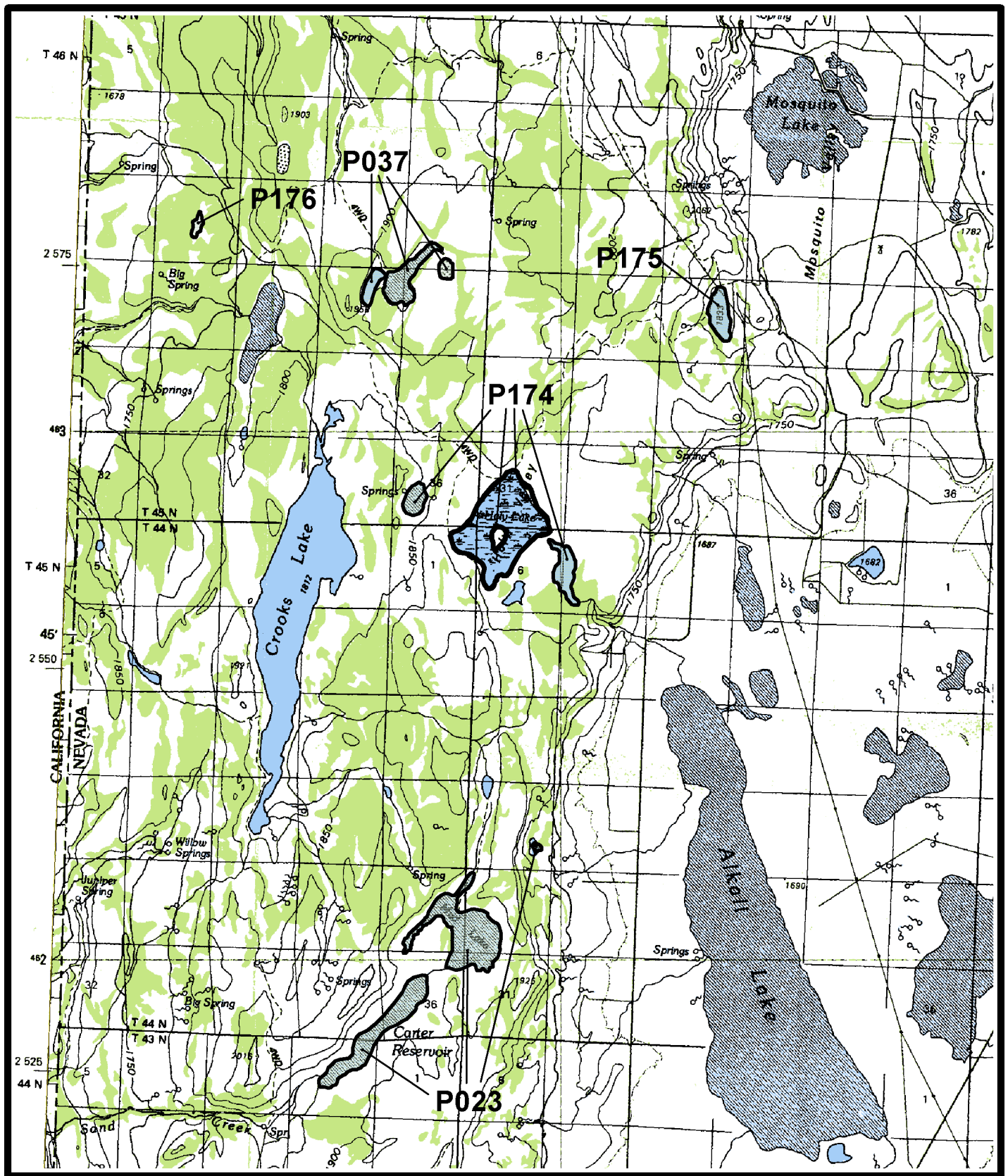
Map 60. Macy Flat area. *Polyctenium williamsiae* potential sites P043-P046, P165-P169, P171-P172, Vya 1:100,000 quadrangle, Washoe County, Nevada.



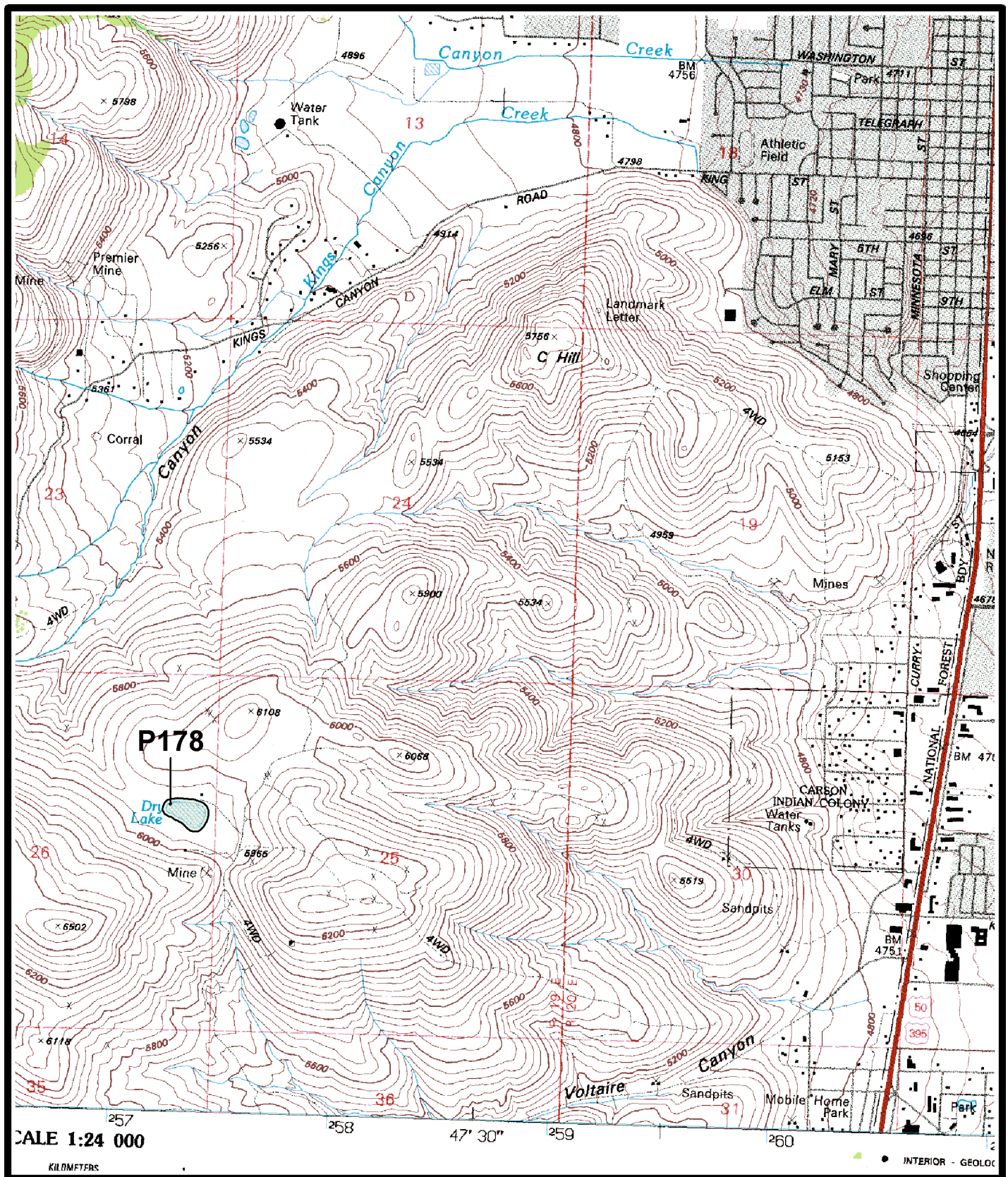
Map 61. Middle Lake area. *Polytenuum williamsiae* possible site 25 and potential sites P029-P030, P170-P172, Vya 1:100,000 quadrangle, Washoe County, Nevada.



Map 62. Carter Reservoir area. *Polycatenium williamsiae* potential sites P023, P025, P173, Vya 1:100,000 quadrangle, Washoe County, Nevada.



Map 63. Crooks Lake area. *Polycenium williamsiae* potential sites P023, P037, P174-P176, Vya 1:100,000 quadrangle, Washoe County, Nevada.



Map 64. C-Hill area. *Polycytenium williamsiae* potential site P178, Carson City 1:24,000 quadrangle, Carson City, Nevada.