



FILM FORM, STYLE, & GENRE

MUHAMMAD IRAWAN SAPUTRA, S.I.KOM., M.I.KOM

ART FORM?

- Why we lost in a film?
- Why we say, “I couldn’t get into it” at film that we don’t like
- Why interrupted film frustrate us?

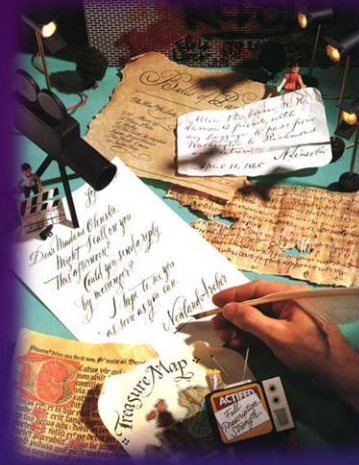


FORM AS A SYTEM



- A painting uses color, lines, and other techniques to invite us to imagine the space portrayed, to compare color and texture, to run our eye over the composition in a certain direction.
- A poem's words may guide us to imagine a scene, to notice a break in rhythm, or to expect a rhyme

FILM FORM DEFINITION



- Film form is the total system that the viewer attributes to the film
- By film form, in its broadest sense, we mean the overall system of relations that we can perceive among the elements in the whole film
- “Logical connection in film”
- “Guiding watching activity”

FILM FORM

- Film form can even make us perceive things anew
- shaking us out of our accustomed habits
- suggesting fresh ways of hearing, seeing, feeling, and thinking.



CONNECTION FORM AND OUR THINKING

- 1, ?
- 1, 2, ? Gratified
- 1, 2, 3, .. false
- 1, 2, 1, ? Readjust our expectation
- 1, 2, 1, 2 .. False
- 1, 2, 1, 3, ? Readjust
- Experience guide our hunches/guess



FORM GAME

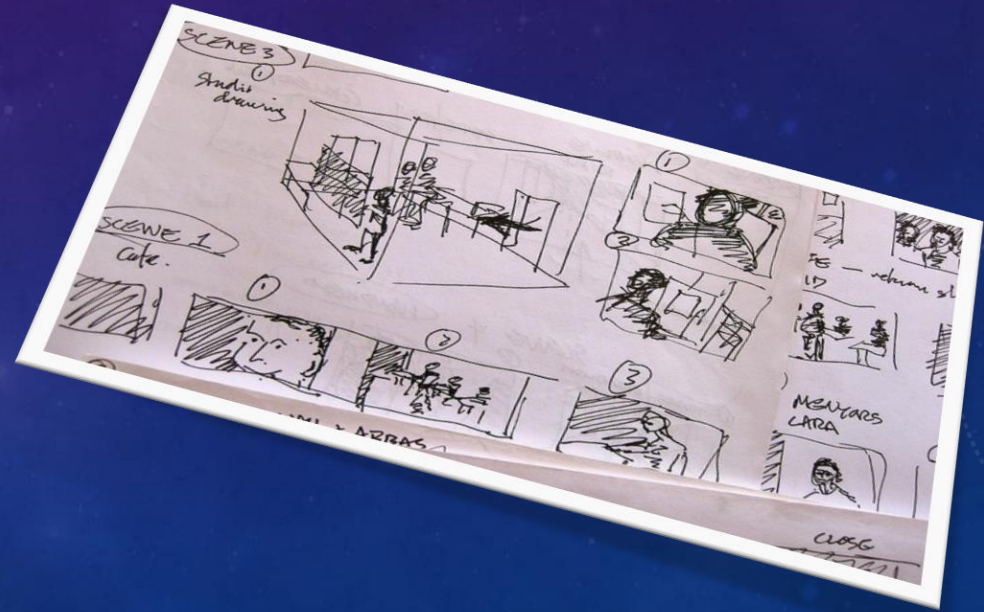
SUSPENSE, SURPRISE, & CURIOSITY

- After 1, 2, sometimes suspense raising become 1, 2, “.....” 3, = suspense
- After 1, 2, expectation to be cheated 1, 2, “1” = surprise
- “Unclear 1, “unclear” 2, “unclear” 3 = curiosity



PRINCIPLES OF FILM FORM

- Function (every element have a function for the system)
- Similiarity and repetition (build motif white rhyme)
- Difference and variation
- Development (rule, governing film form)
- Unity/diunity



FORM AND MEANING

- Referential meaning
- Explicite meaning
- Implicite meaning
- Symptomatic meaning



EVALUATING THE FILM

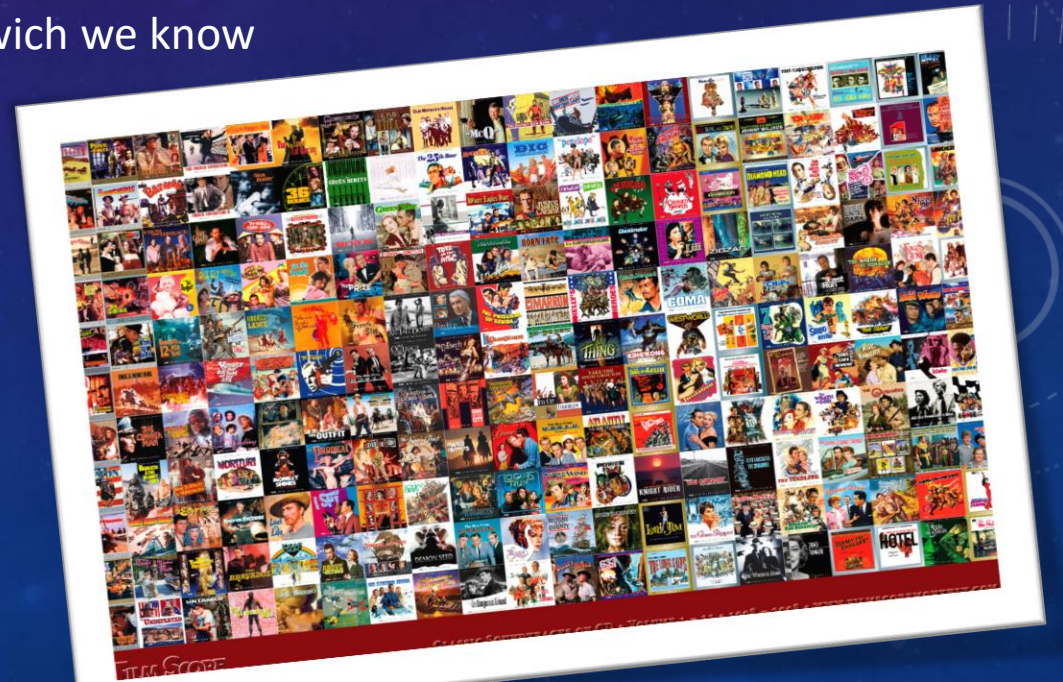


Artistic Criteria:

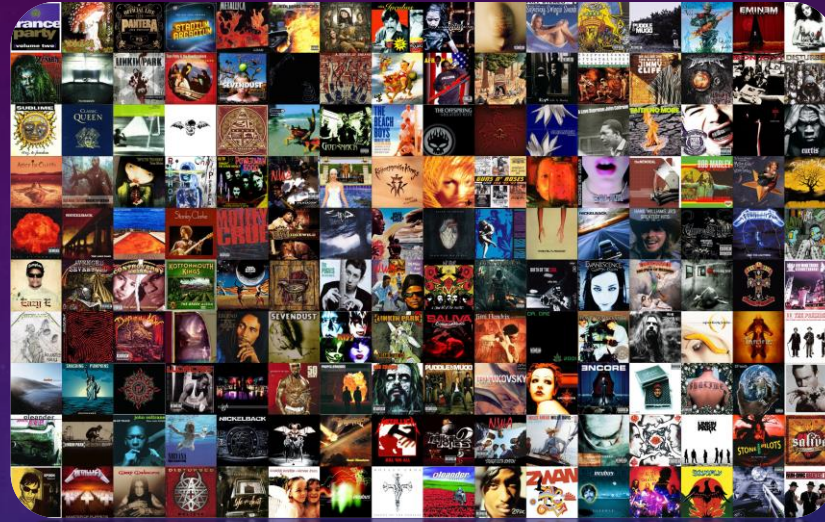
- Coherence (unity)
- Intensity of effects (vivid, striking, and emotionally engaging, it may be considered more valuable)
- Complexity
- originality

DEFINITION

- the way in which the director utilize techniques within whole filmic systems.
- We can easily confirm our expectation with specific film style wich we know



GENRE



- Genre affect industry officials' decisions about what films to make
- Genre are simple way to characterize the film, not to evaluate it
- Genre provide way to finding film the viewer want to see
- Film genre build by viewer

HOW TO DETERMINE FILM GENRE (ROCHANIADI, 2008)

- Formula

Action (good vs bad, outdoor & wild setting);

- Film critic & movie star

Good assessment from film critic make a film become more difficult to insert in one specific genre

Movie star make film popular, and popularity build genre



HOW TO DETERMINE FILM GENRE

- Story elements (character, actor, plot, setting, etc)

Antagonis character (alien - science fiction, ghost - horror)

Plot (murder – crime, love – romance)

Setting (outdoor - adventure)

- Sequel and repetition

Popularity make genre



REFERENCES

Bordwell, David & Thompson, Kristin. 2008. Film Art an Introduction. McGraw Hill: New York.

Rochaniadi, Ida. 2008. Mitos di Balik Film Laga Amerika. UGM Press: Yogyakarta.

Thank You

