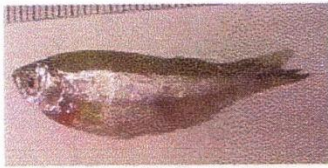


Plate 2: Fishes of downstream of Subansiri floodplain



Plates 3: Fishes of downstream of Subansiri floodplain



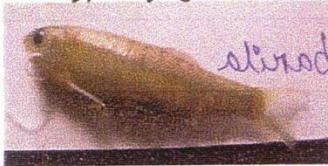
Amblypharyngodon mola



Aspidoparia jaya



Aspidoparia morar



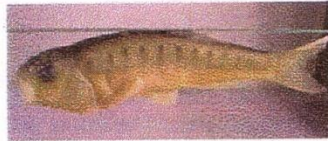
Barilius barila



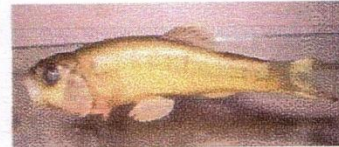
Barilius barna



Barilius bendelisis



Barilius vagra



Barilius shacra



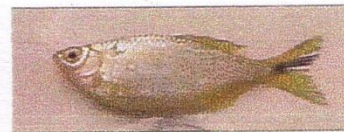
Barilius tileo



Brachydanio rerio



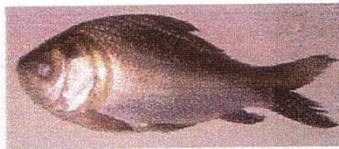
Danio aequipinnatus



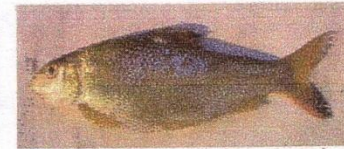
Devario devario



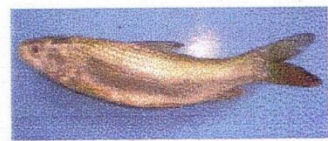
Devario dangila



Catla catla



Chagunius chagunio



Cirrhinus mrigala



Cirrhinus reba



Crossocheilus burmanicus



Crossocheilus latius



Esomus danricus



Paruciosoma daniconius



Rasbora rasbora



Raiamas bola

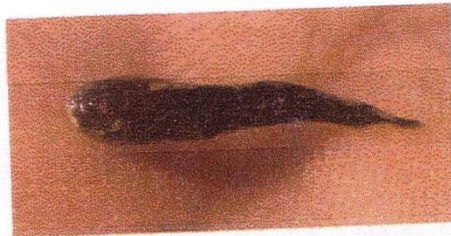


Osteobrama cotio

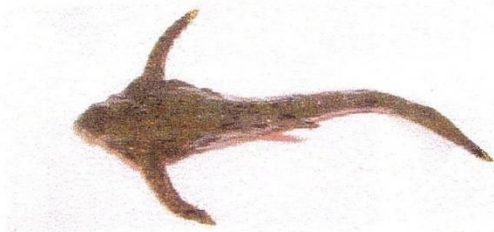
Plate 4: Fishes of downstream of Subansiri floodplain



Akysis prashadi



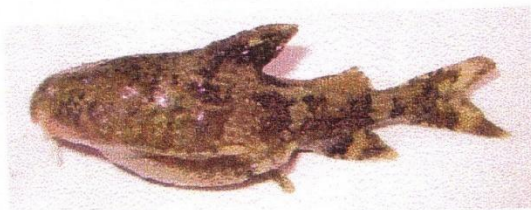
Hara horai



Hara hara



Hara jerdoni



Erethistes pussilus



Erethistes sp



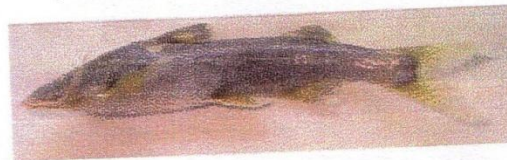
Pseudolaguvia shawi



Glyptothorax telchita



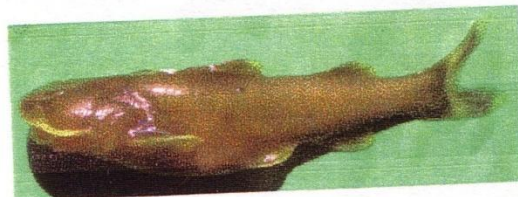
Glyptothorax trilineatus



Glyptothorax striatus

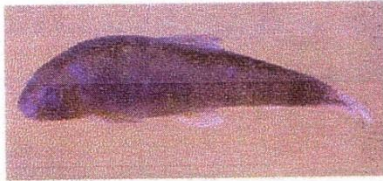


Glyptothorax sp

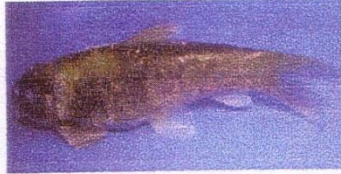


Glyptothorax indicus

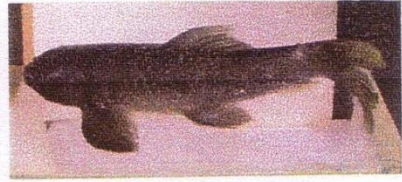
Plate 5: Fishes of downstream of Subansiri floodplain



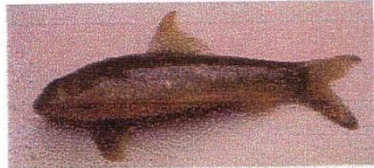
Garra nasuta



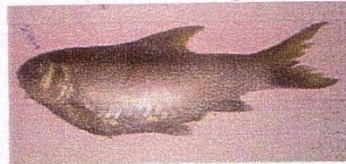
Garra lissorhynchus



Garra gotyla gotyla



Garra annandalei



N. hexagonolepis



Tor putitora



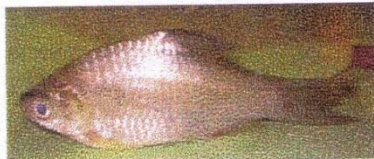
Tor tor



Oreichthys cosuatis



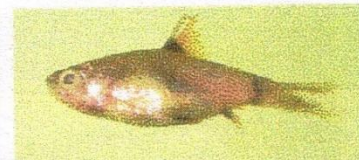
Puntius chola



Puntius clavatus



Puntius conchonius



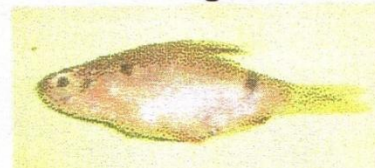
Puntius gelius



Puntius sophore



Puntius terio



Puntius ticto



Puntius sarana



Puntius guganio



Salmostoma bacaila



Salmostoma phulo

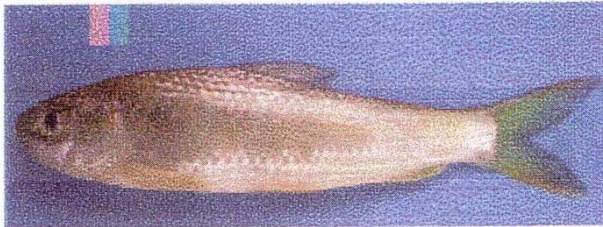


Securicola gora

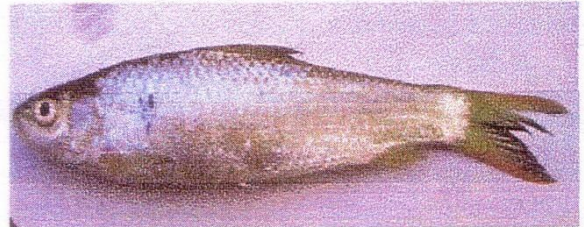


Sinilabeo dero

Plate 6: Fishes of downstream of Subansiri floodplain



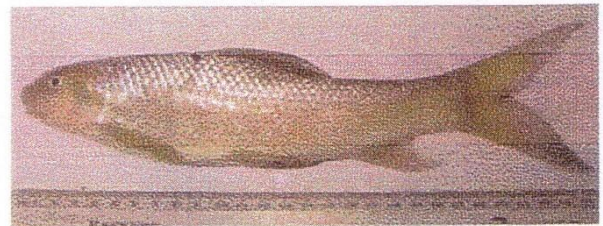
Labeo bata



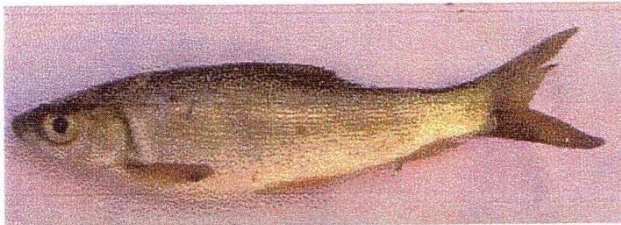
Labeo boga



Labeo calbasu



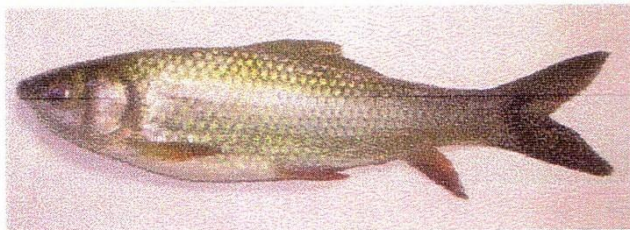
Labeo dyocheilus



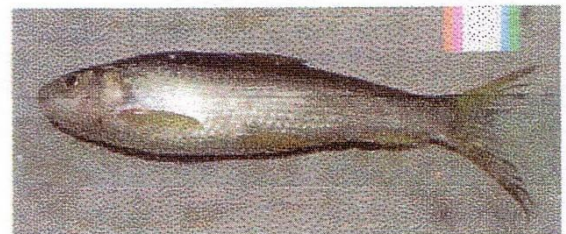
Labeo gonius



Labeo gonius (cross)



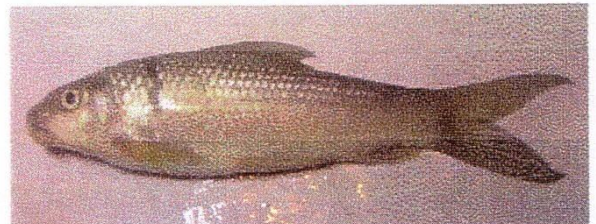
Labeo rohita



Labeo angra



Labeo fimbriatus

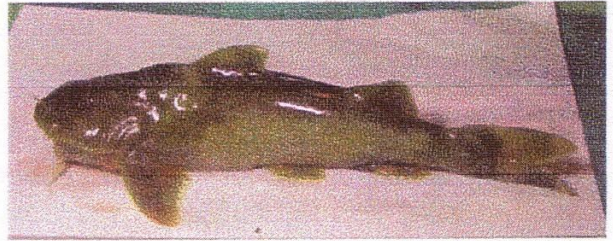


Labeo gonius

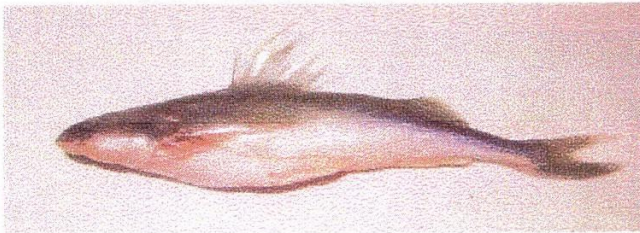
Plate 7: Fishes of downstream of Subansiri floodplain



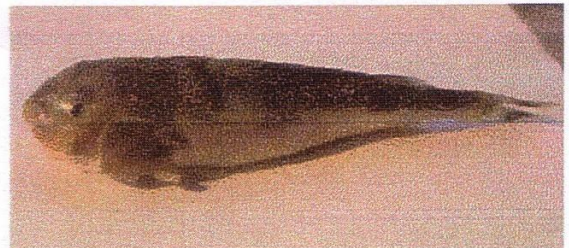
Glyptothorax cavia



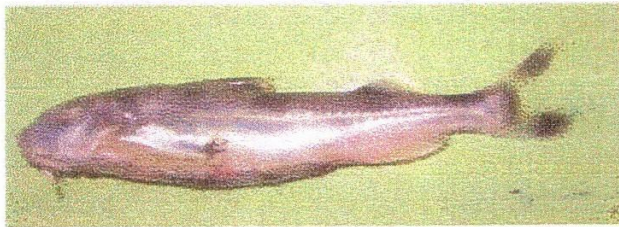
Glyptothorax chindwinica



Nangra assamensis



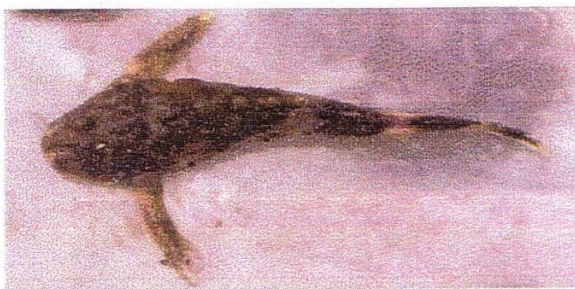
Gogangra viridescens



Gagata cenia



Gagata gagata



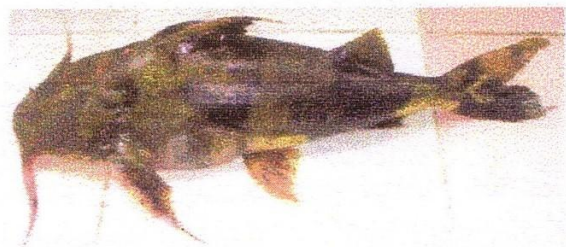
Erethistoides montana



Sissor rabdophorus



Bagarius bagarius

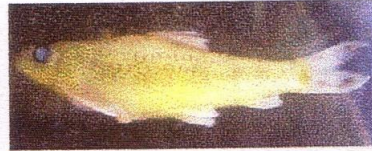


Bagarius yarrellii

Plate 8: Fishes of downstream of Subansiri floodplain



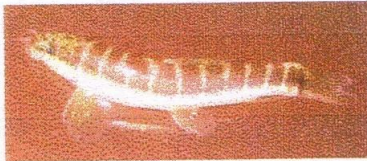
Psilorhynchus balitora



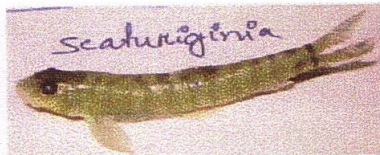
Psilorhynchus gracilis



Acanthocobitis botia



Schistura savona



Schistura scaturiginia



Botia histrionica



Botia rostrata



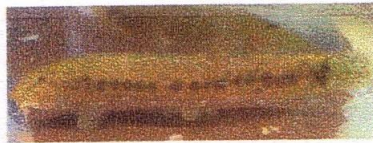
Botia dario



Balitora brucei



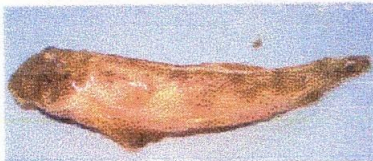
Lepidocephalichthys guntea



L. irrorata



L. annandalei



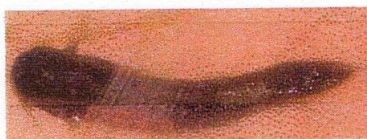
Canthophrys gongota



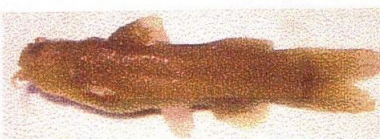
Lepidocephalichthys thermalis



Schistura corica



Amblyceps mongois



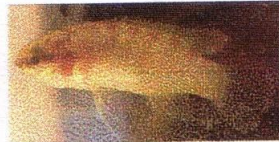
Amblyceps apangi



Nandus nandus



Badis assamensis



Badis badis



Anabas testudineus



Tetraodon cutcutia



Olyra longicaudata



Glossogobius giurus



Heteropneustes fossilis

Plate 9: Fishes of downstream of Subansiri floodplain



C. aurentimaculata



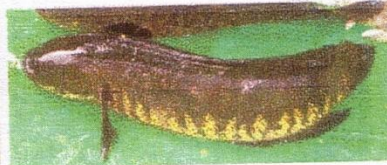
C. marulius



C. gachua



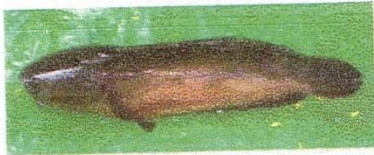
C. punctata



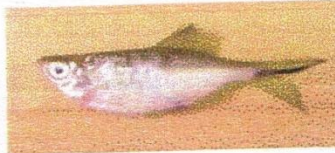
C. striata



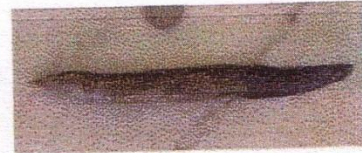
C. stewartii



Channa sp.



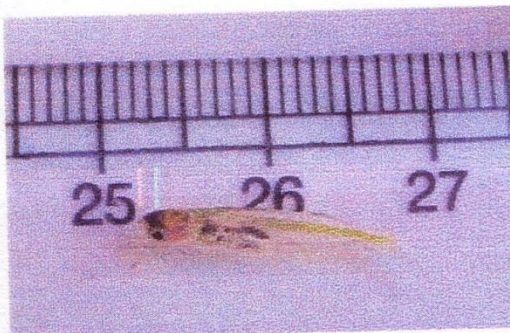
*Chela cachius**



M. armatus



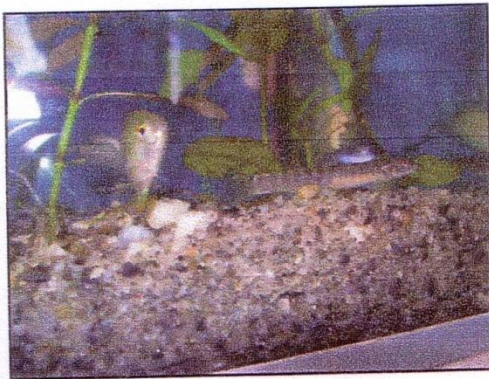
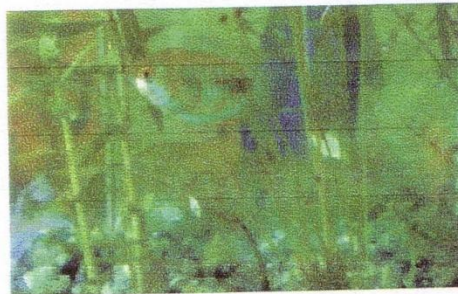
Pillaia indica



Danionella priapus



Plate 10: Potential aquarium fishes in reared condition



Taken from UGC major research project report Principal Investigator, Dr(Mrs) Sabita Borah Ph .D

And team North Lakhimpur college, Assam, 787031.