

# Cerebral Hemispheres and Cerebellum

Anatomy Practical

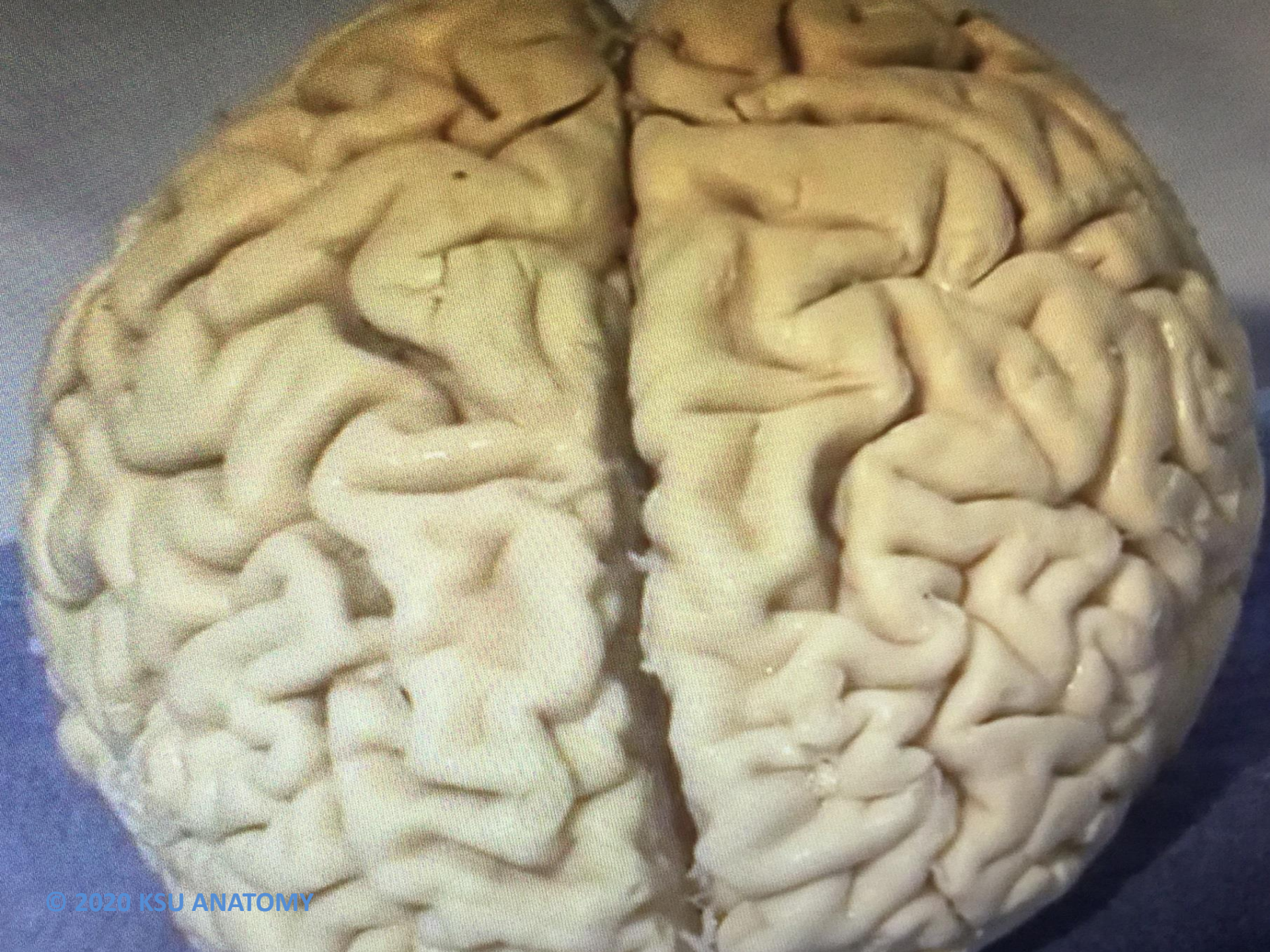
**By Dr. Faisal Singawy**

**Anatomy Department**

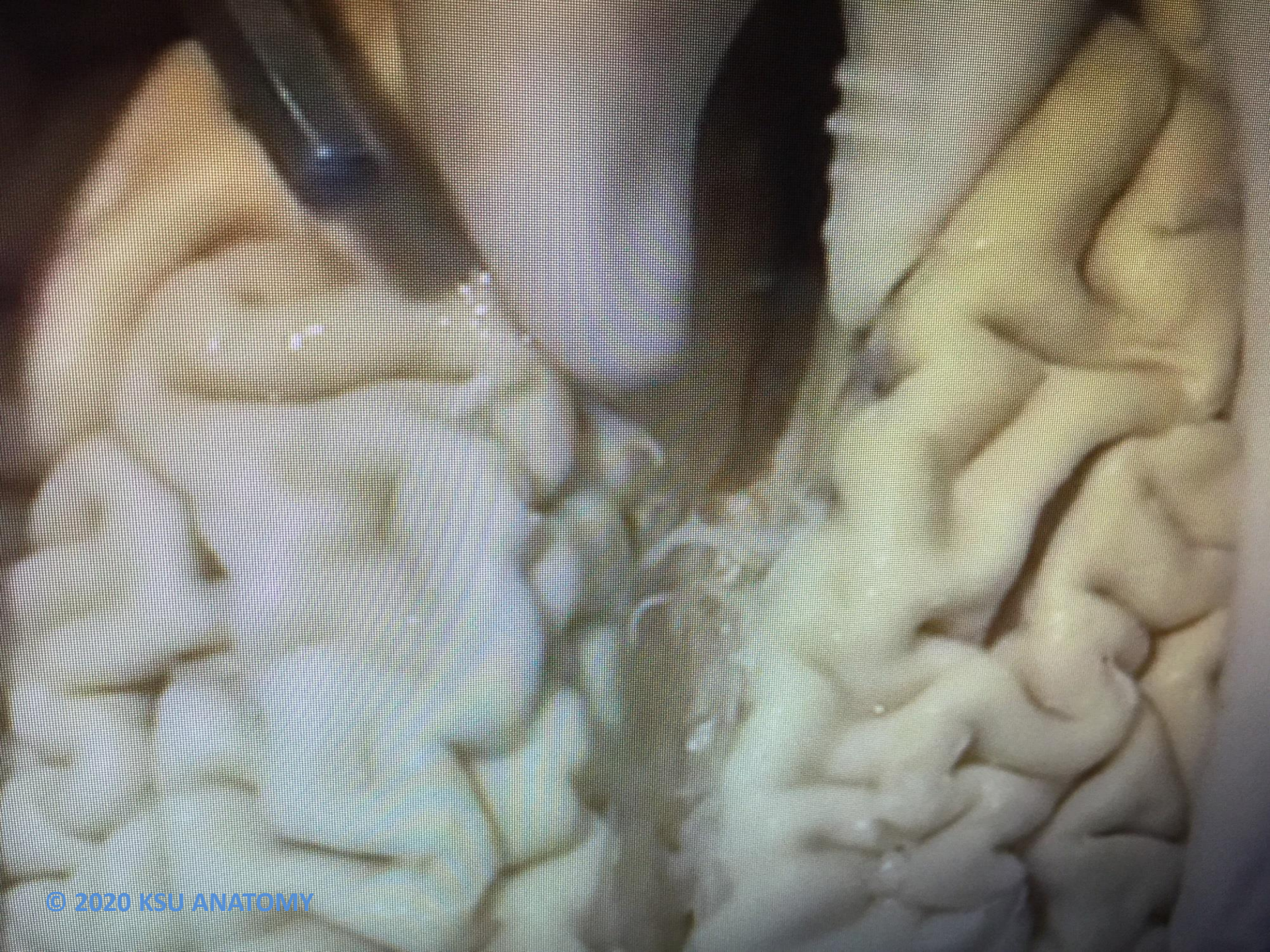
**College of Medicine**

**King Saud University**









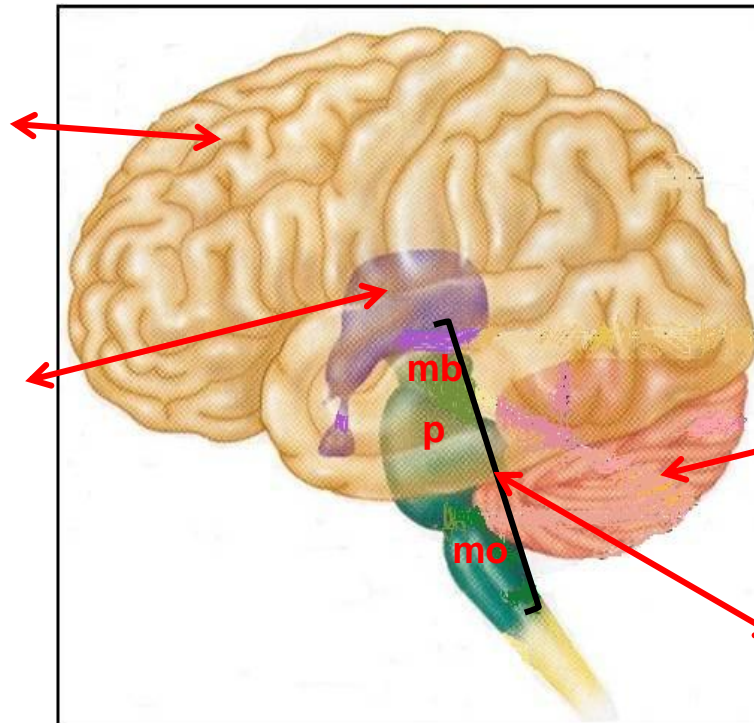




# CEREBRAL HEMISPHERE

**Cerebrum**  
2 Cerebral  
hemispheres

**Diencephalon:**  
Thalamus,  
Hypothalamus,  
Subthalamus &  
Epithalamus



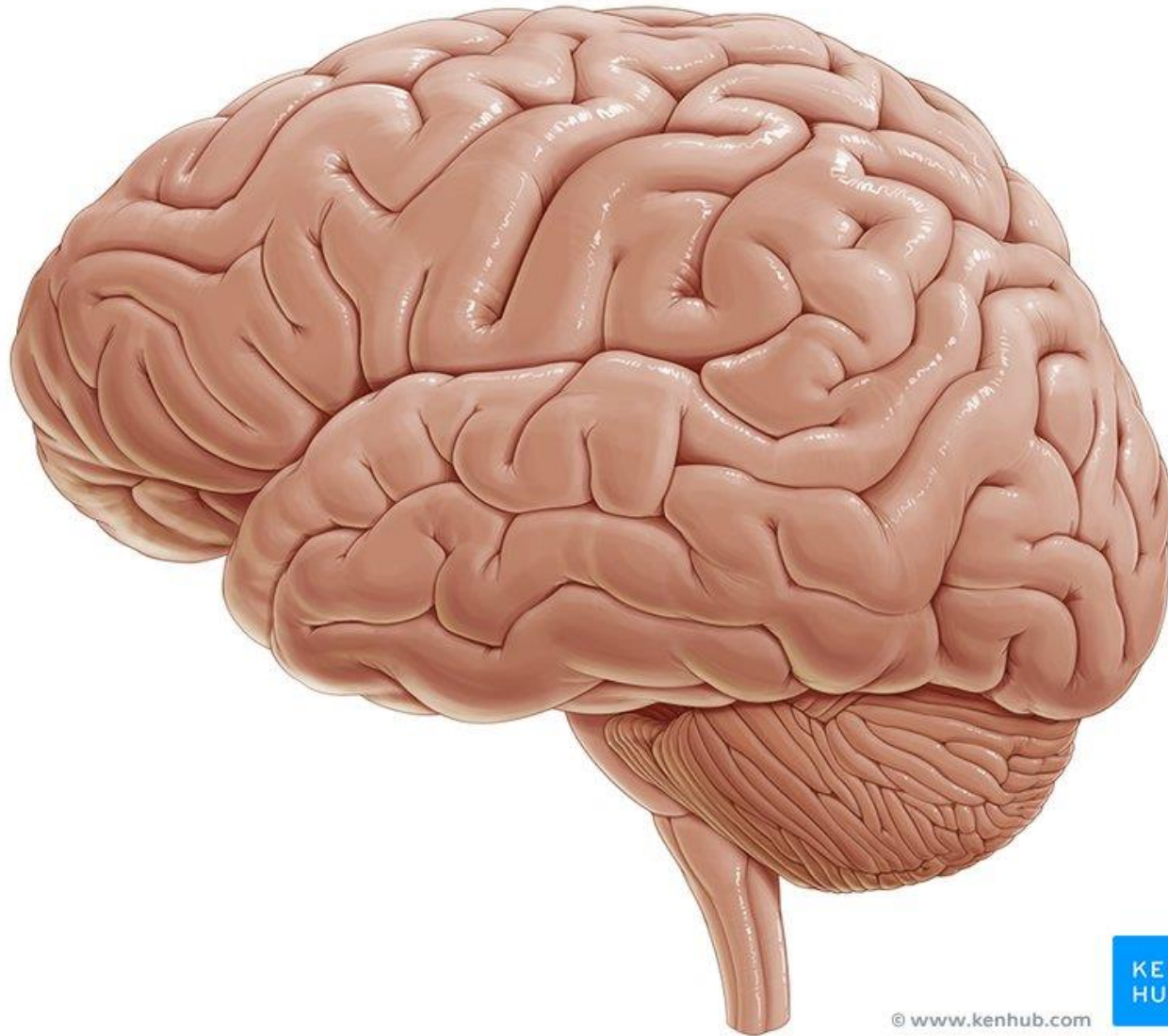
**Cerebellum**

**Brainstem:**

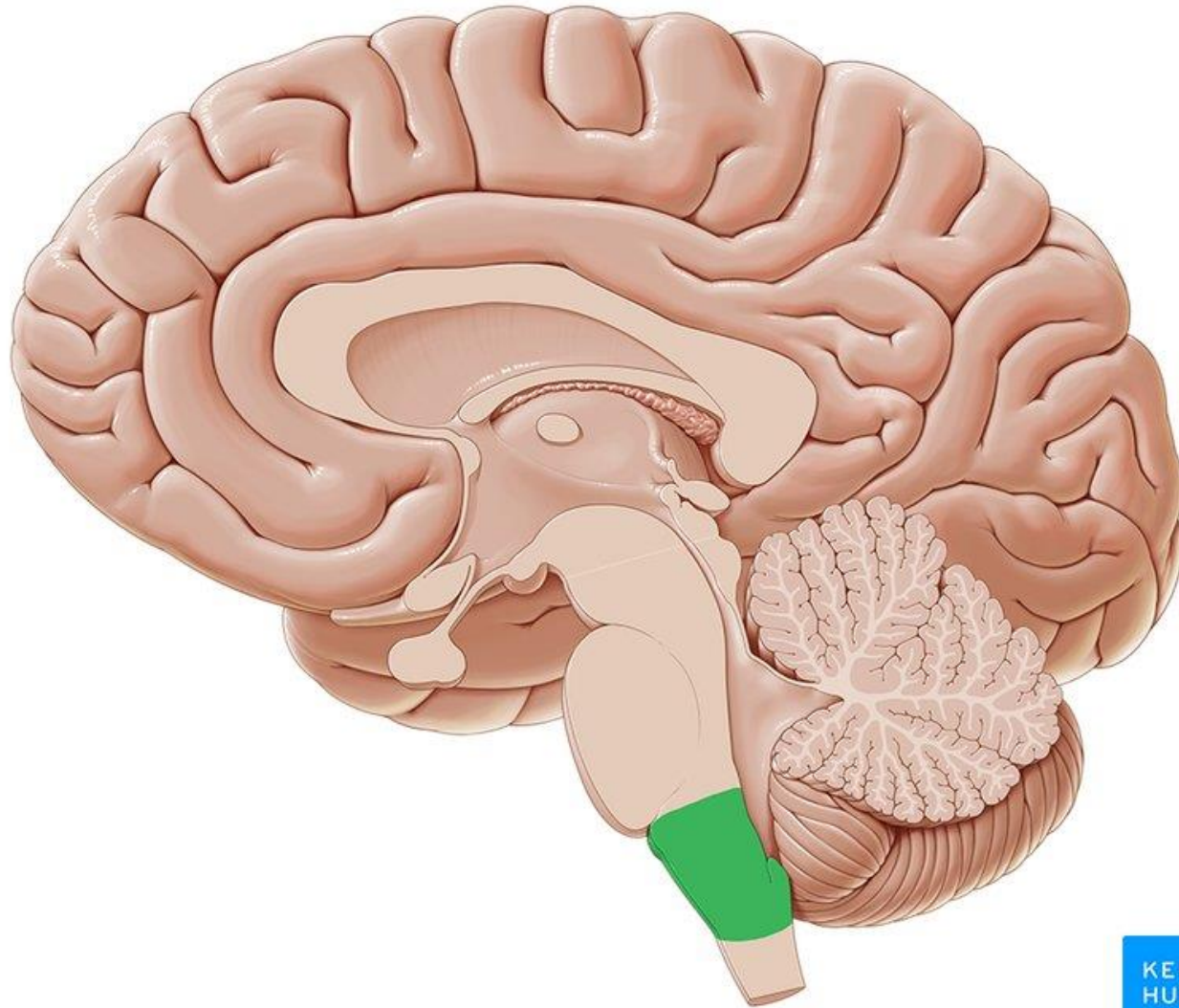
- Midbrain
- Pons
- Medulla oblongata



# BRAIN: LATERAL SURFACE



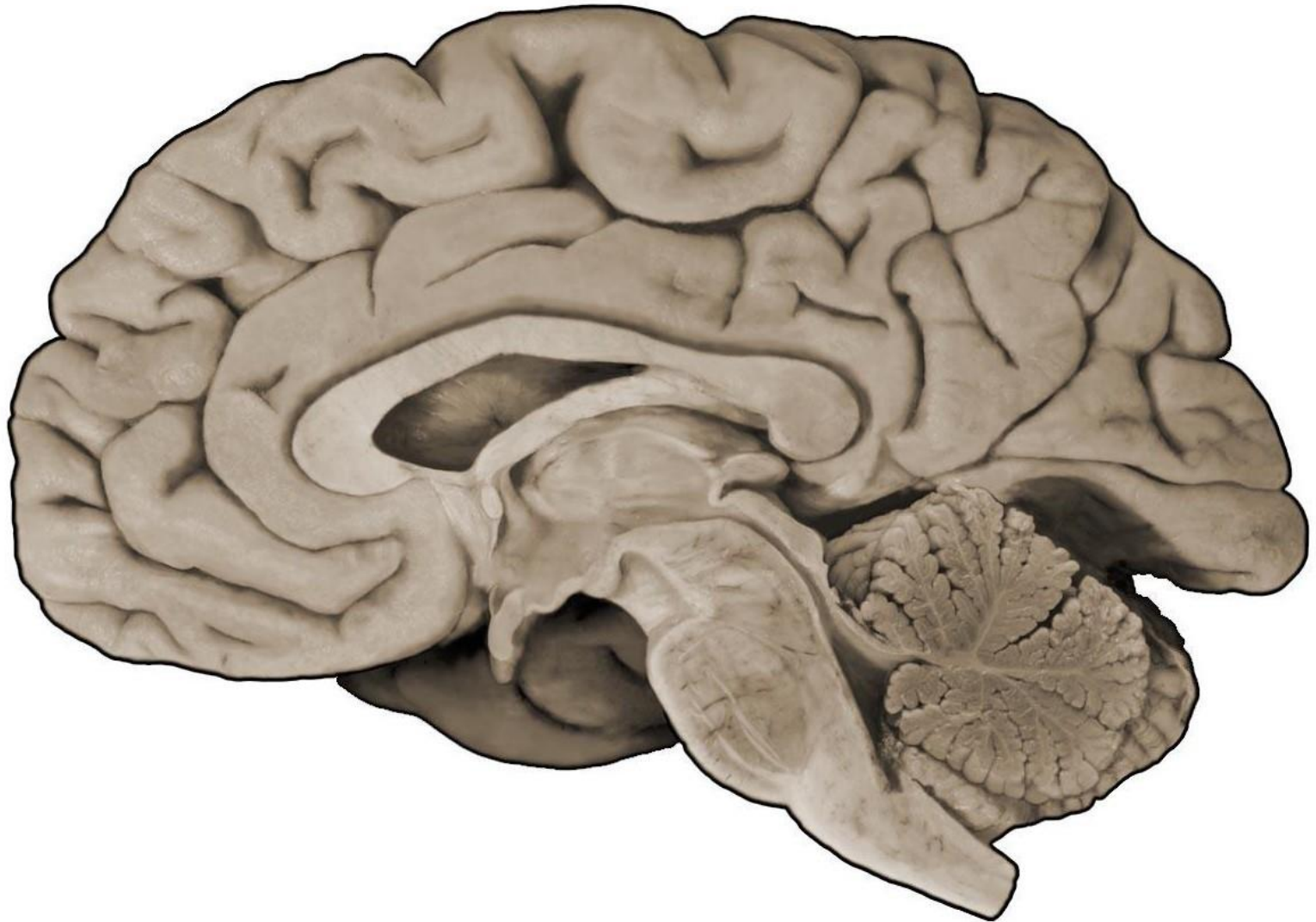
# THE BRAIN: MEDIAL SURFACE



© www.kenhub.com

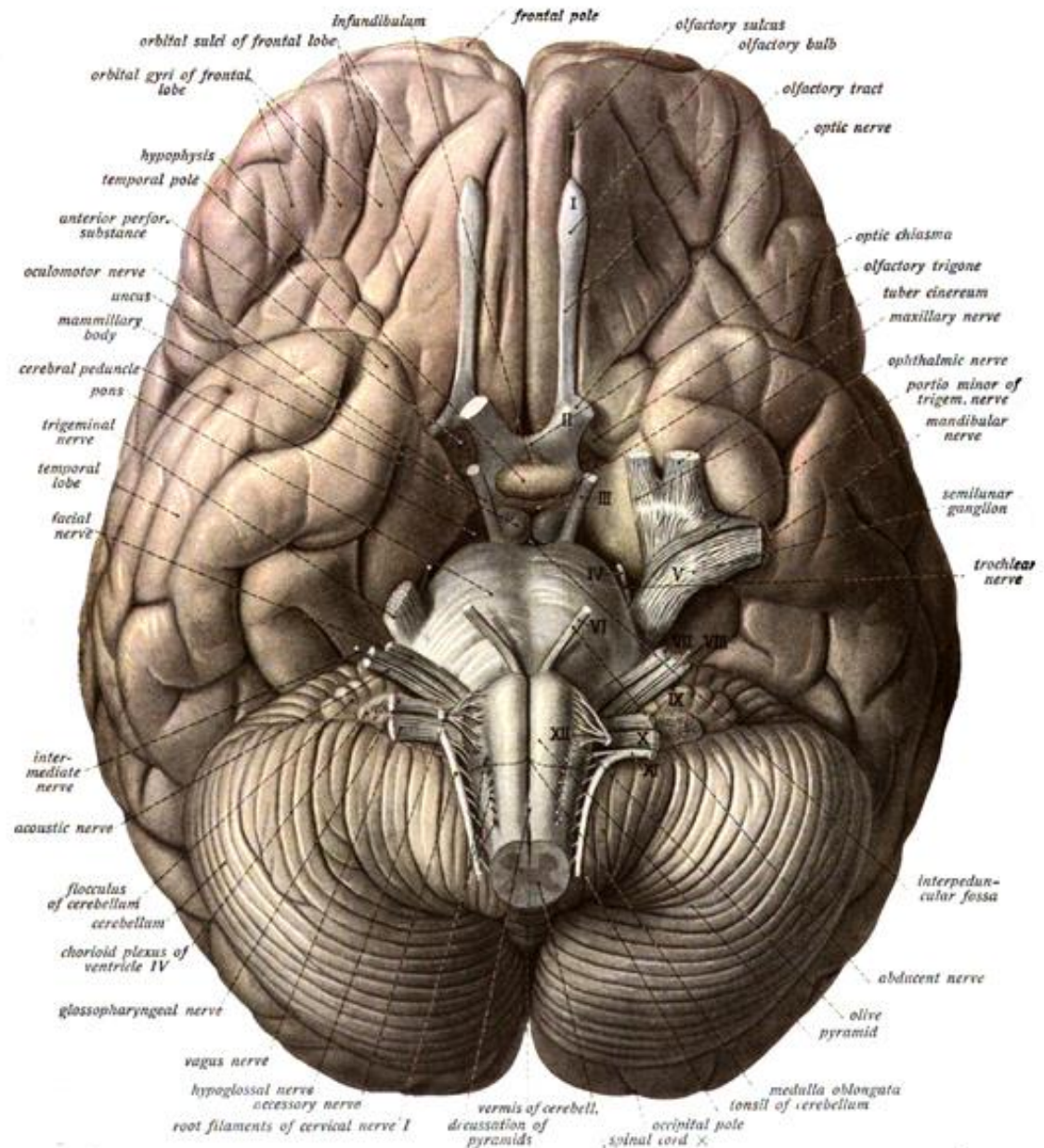


# BRAIN: MEDIAL SURFACE





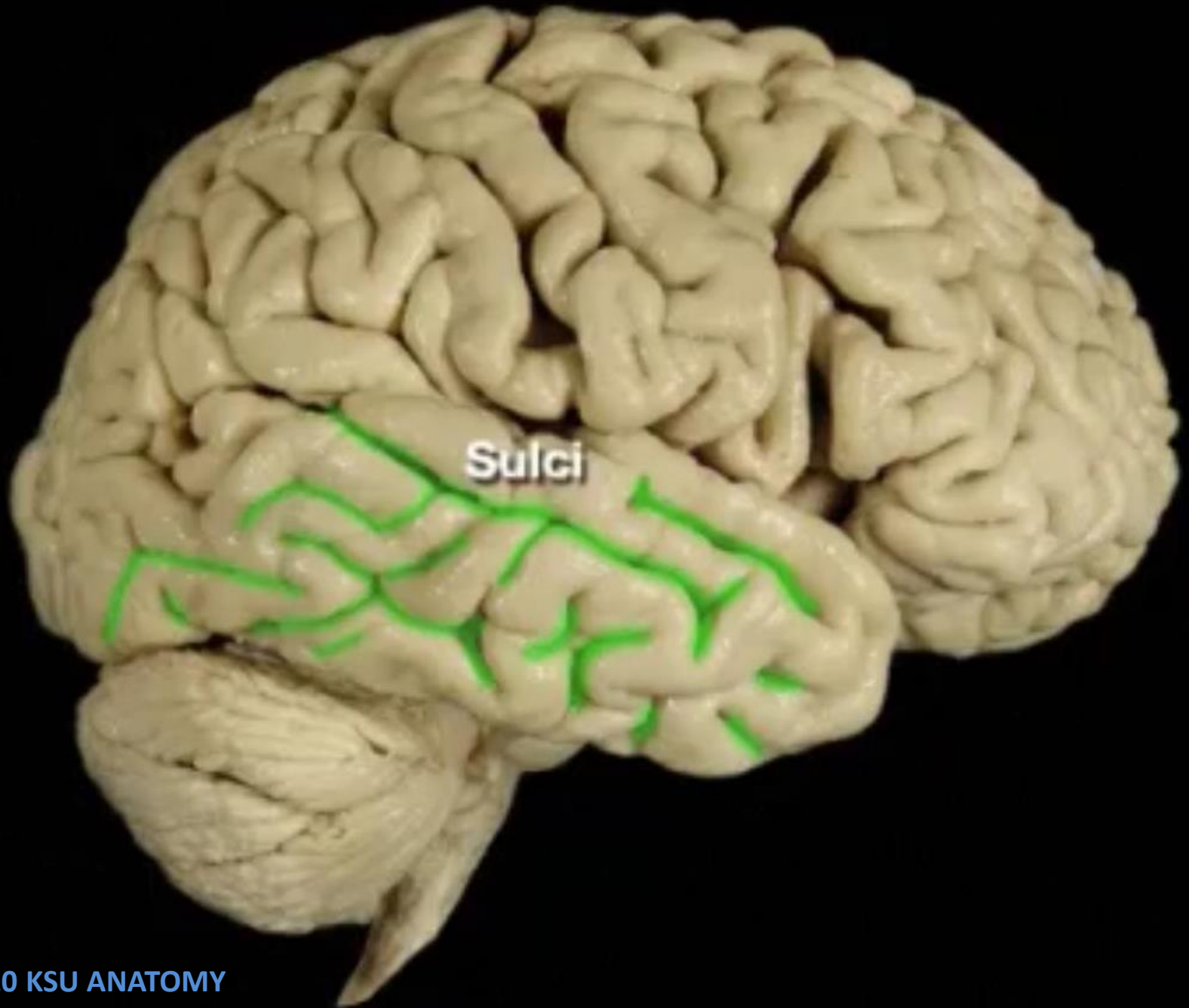
# CEREBRAL HEMISPHERES: INFERIOR SURFACE



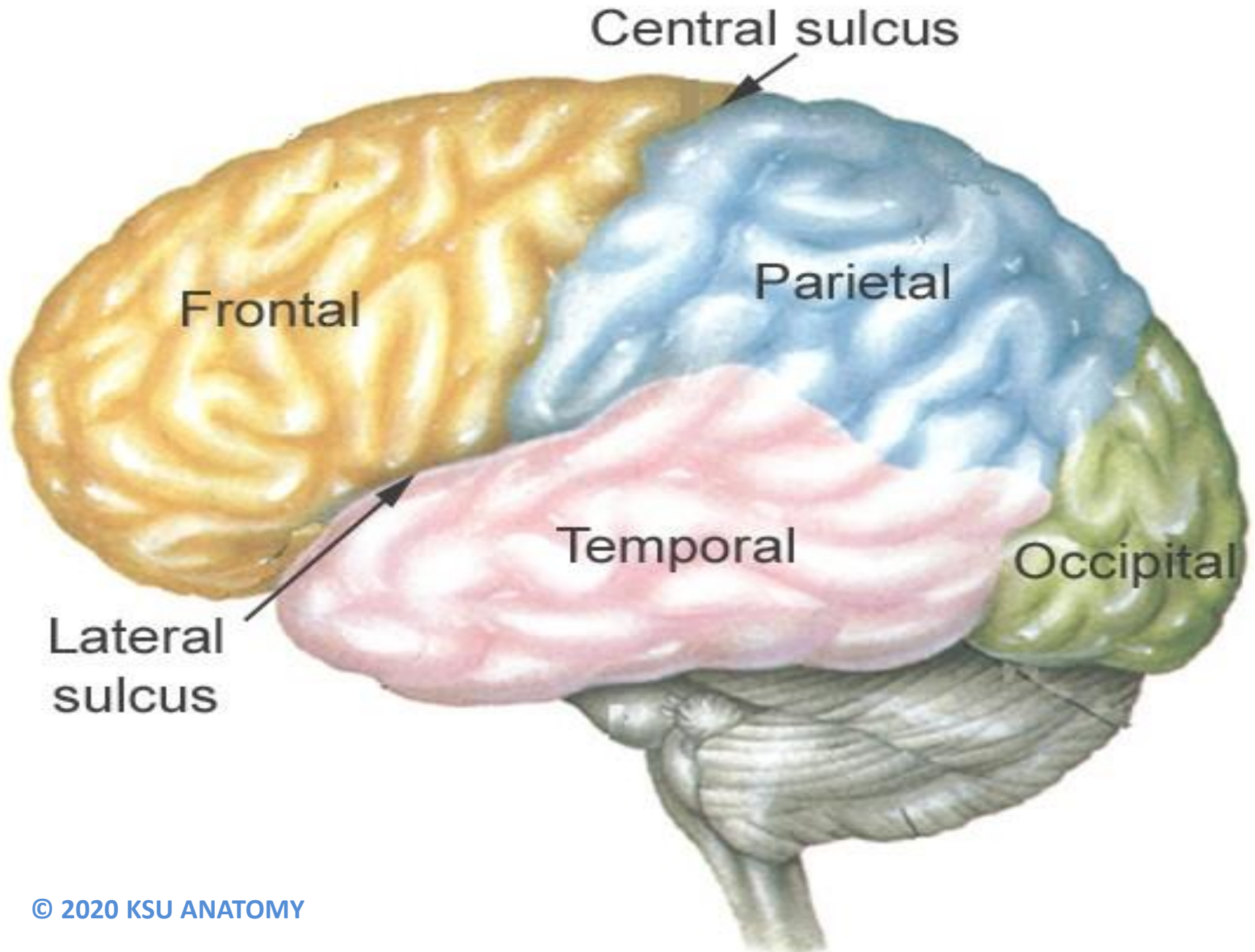


Gyri



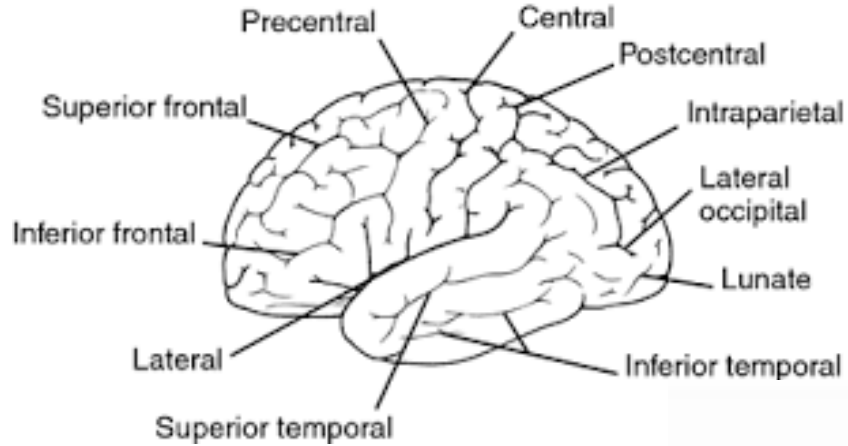


Sulci



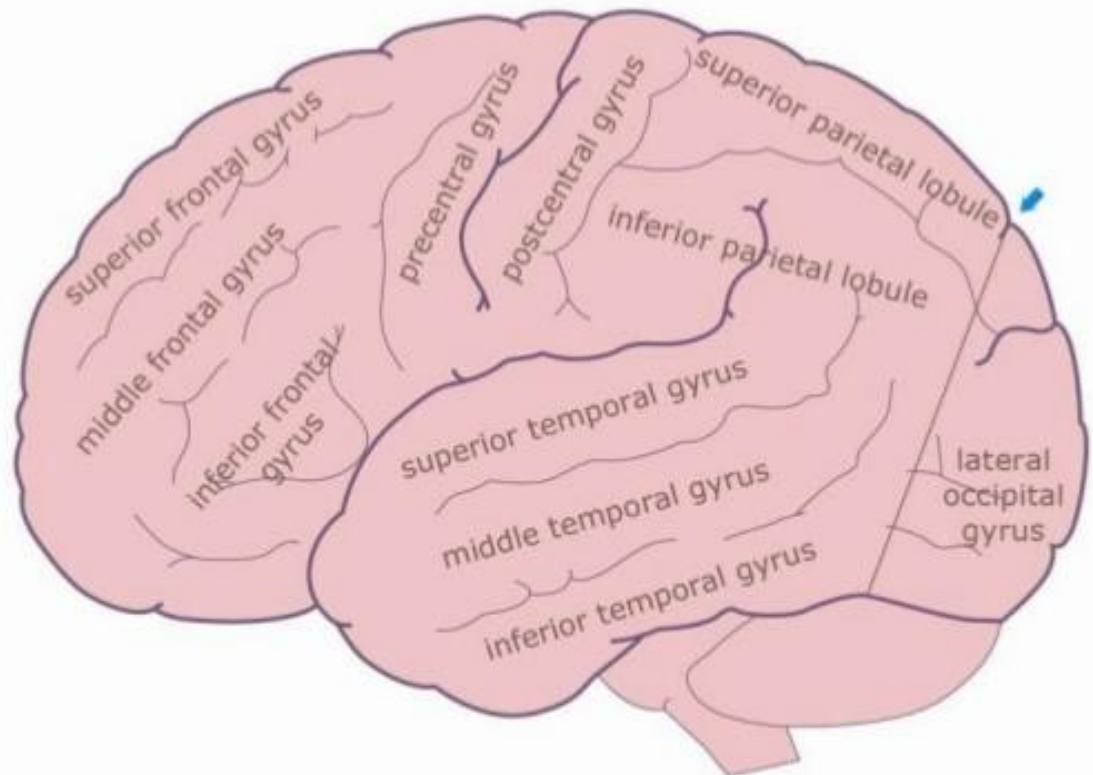


# LEFT CEREBRAL HEMISPHERE: LATERAL SURFACE

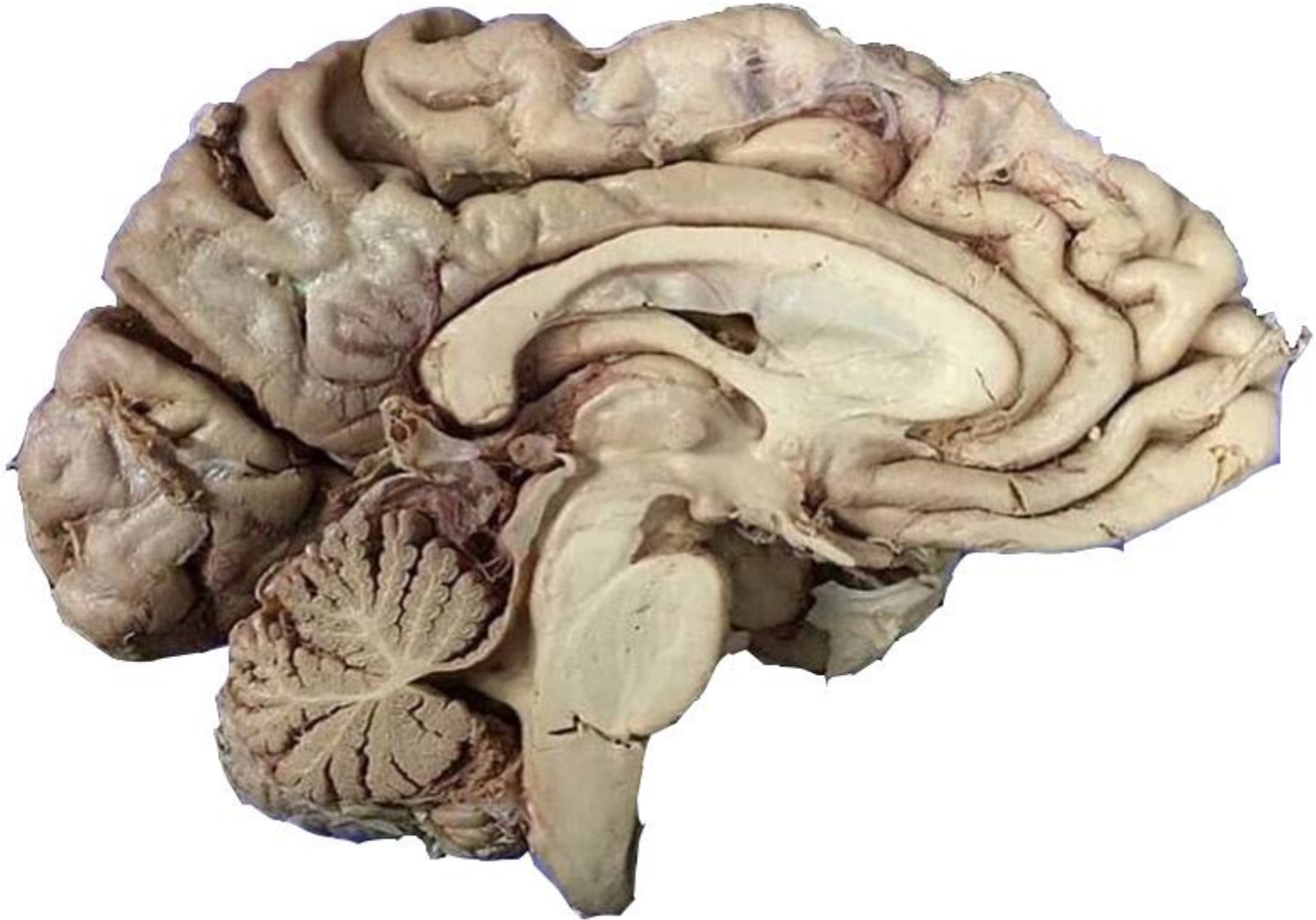


SULCI

GYRI

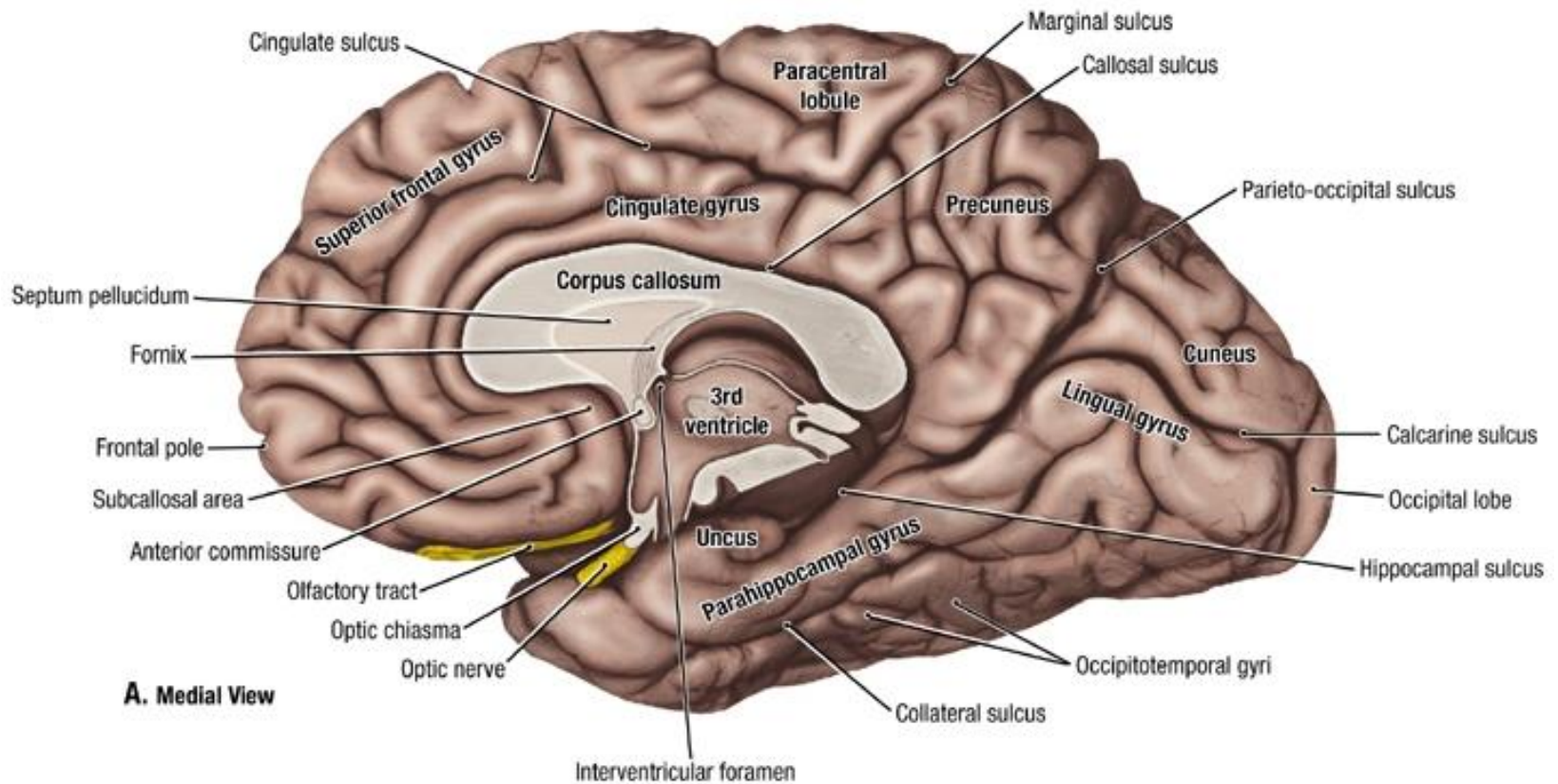


# BRAIN MEDIAL SURFACE



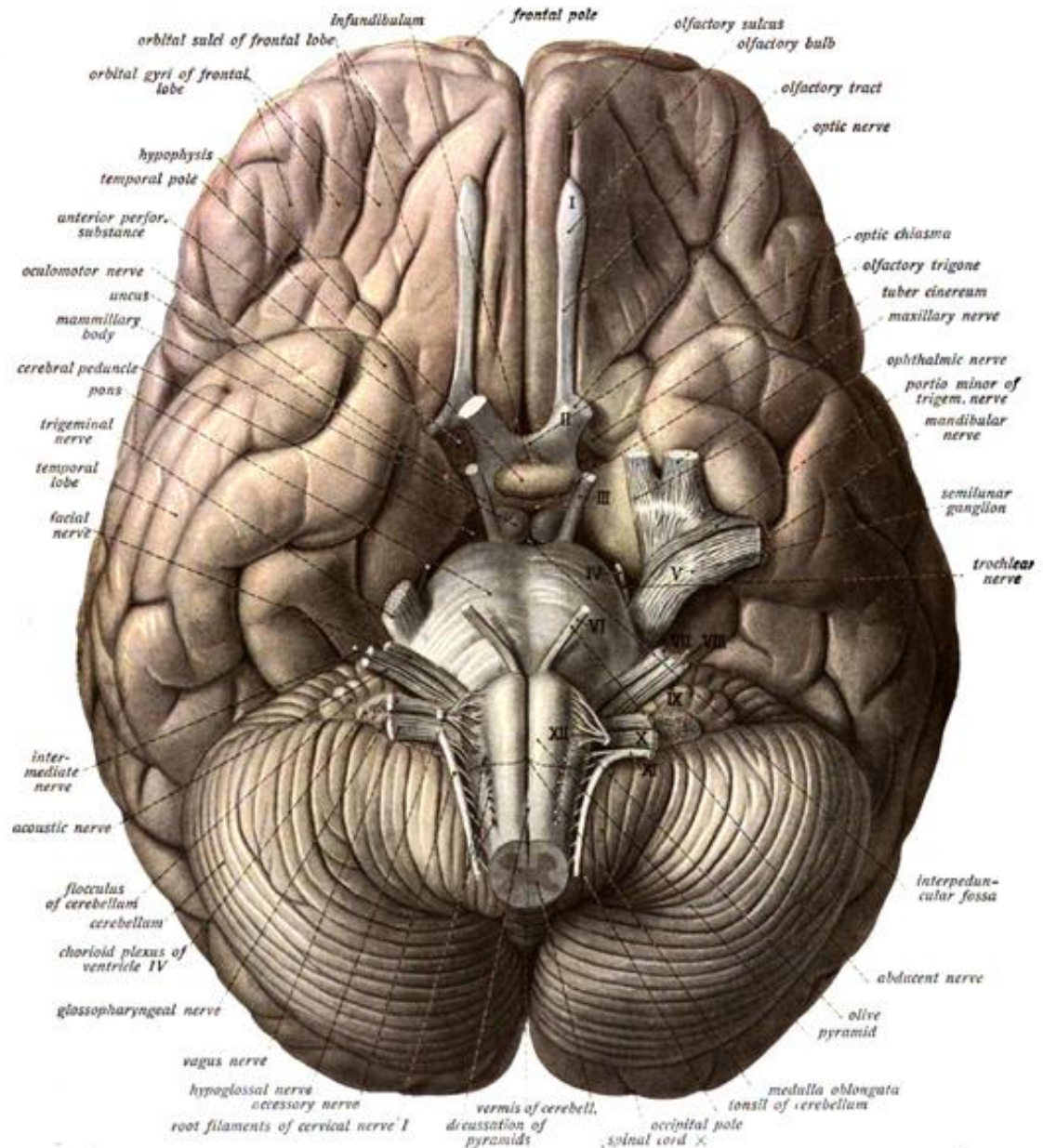


# RIGHT CEREBRAL HEMISPHERE: MEDIAL SURFACE SULCI & GYRI

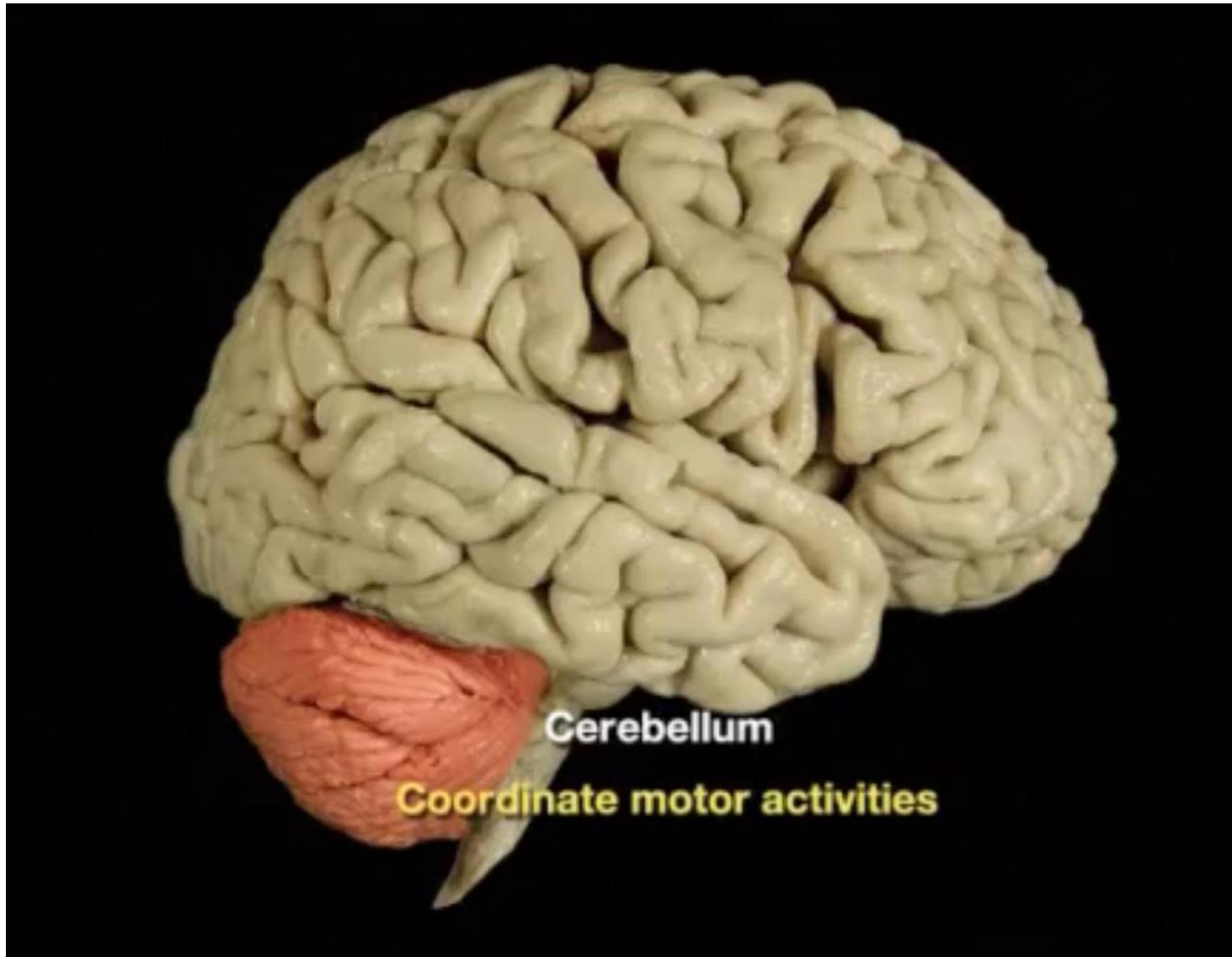


Copyright © 2009 Wolters Kluwer Health | Lippincott Williams & Wilkins

# CEREBRAL HEMISPHERES: INFERIOR SURFACE



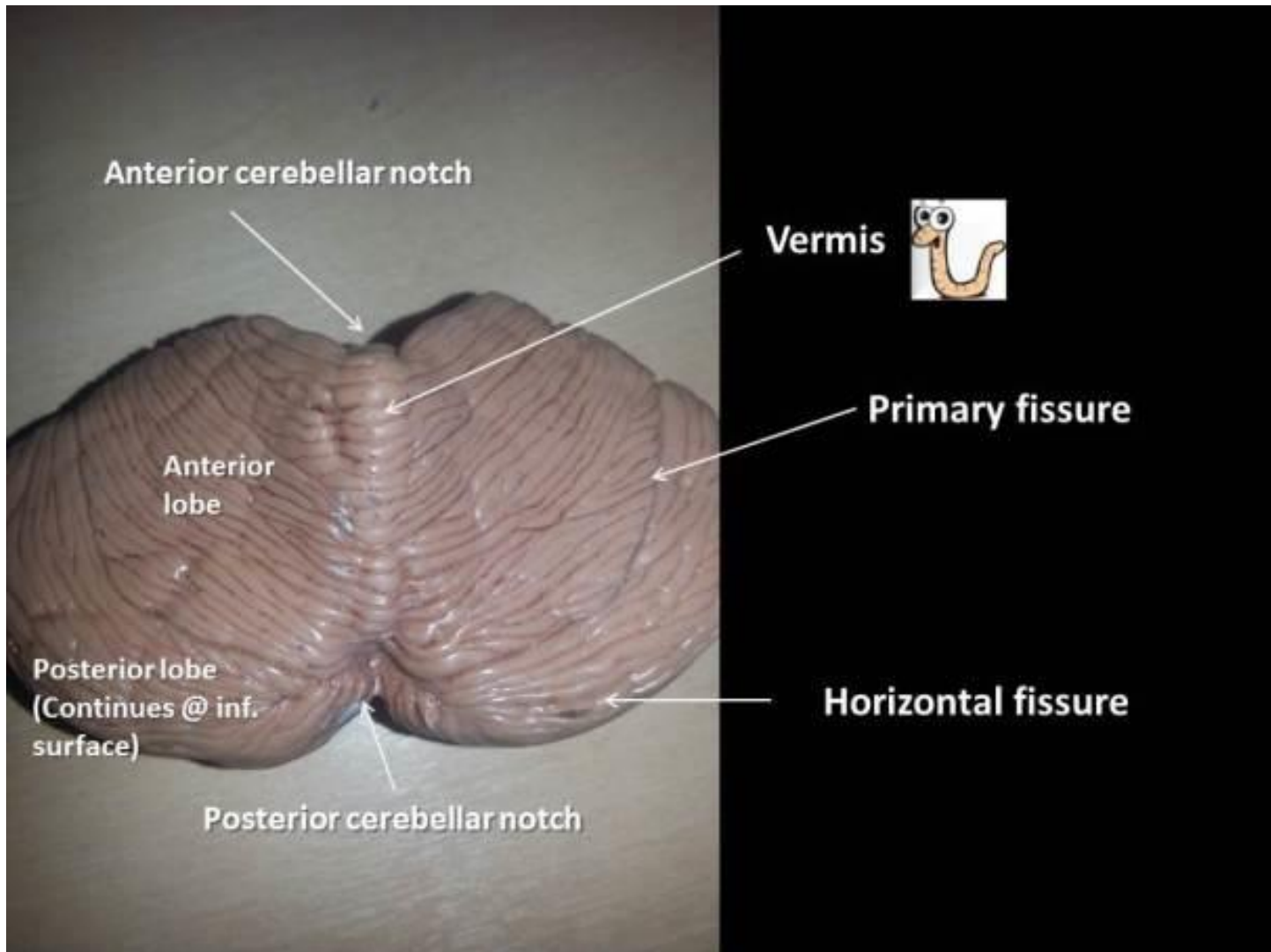




**Cerebellum**

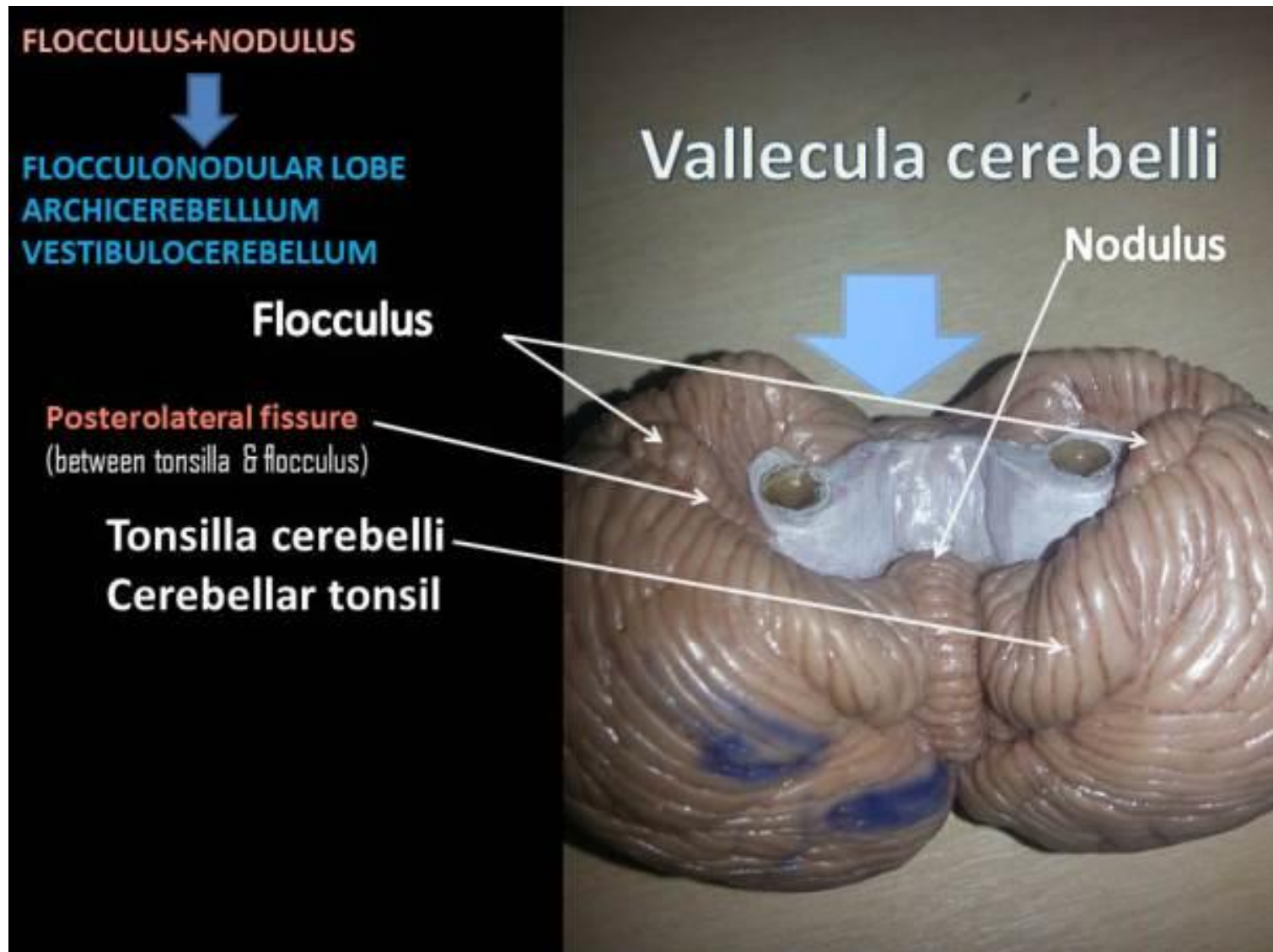
**Coordinate motor activities**

# CEREBELLUM: SUPERIOR SURFACE



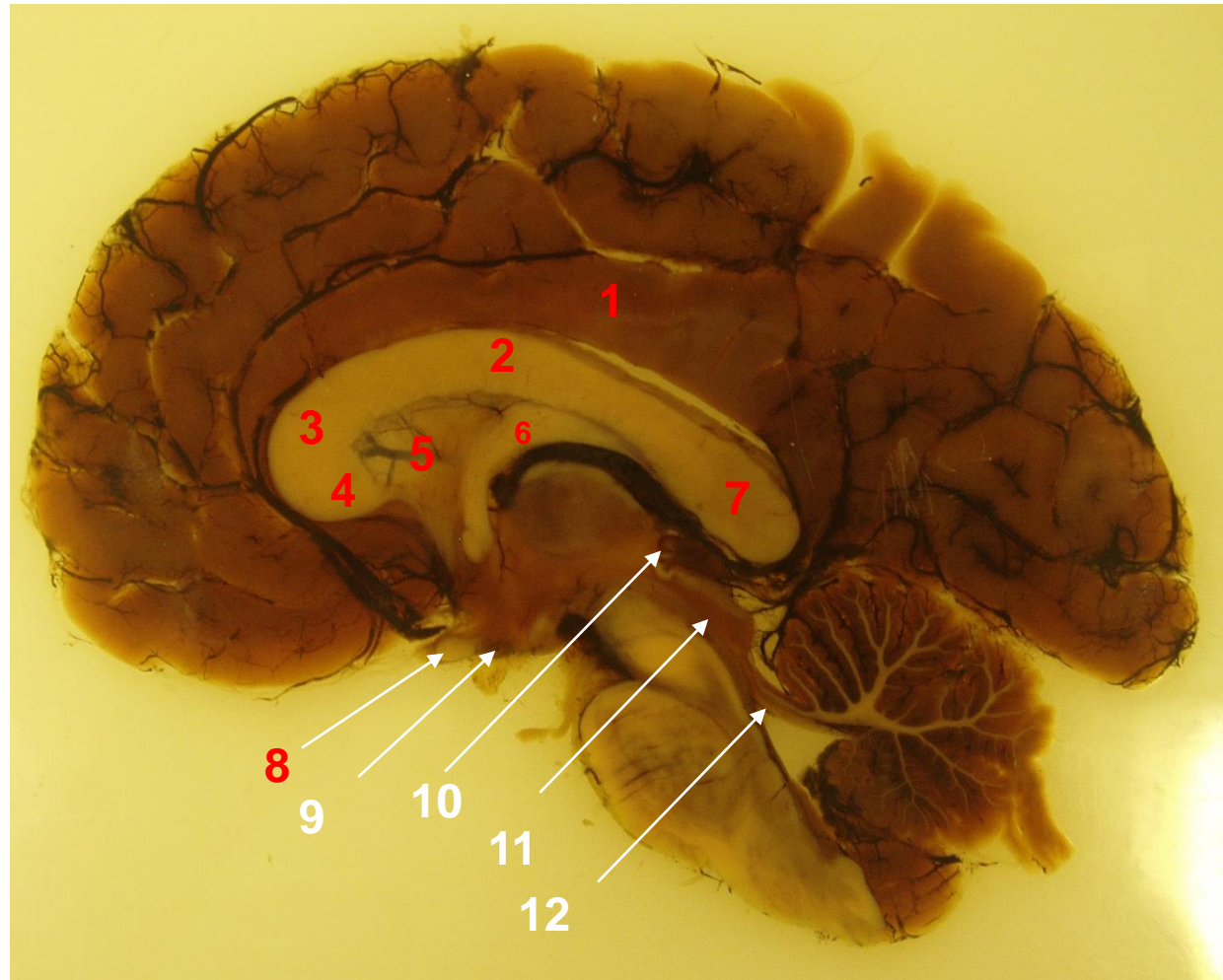


# CEREBELLUM: INFERIOR SURFACE

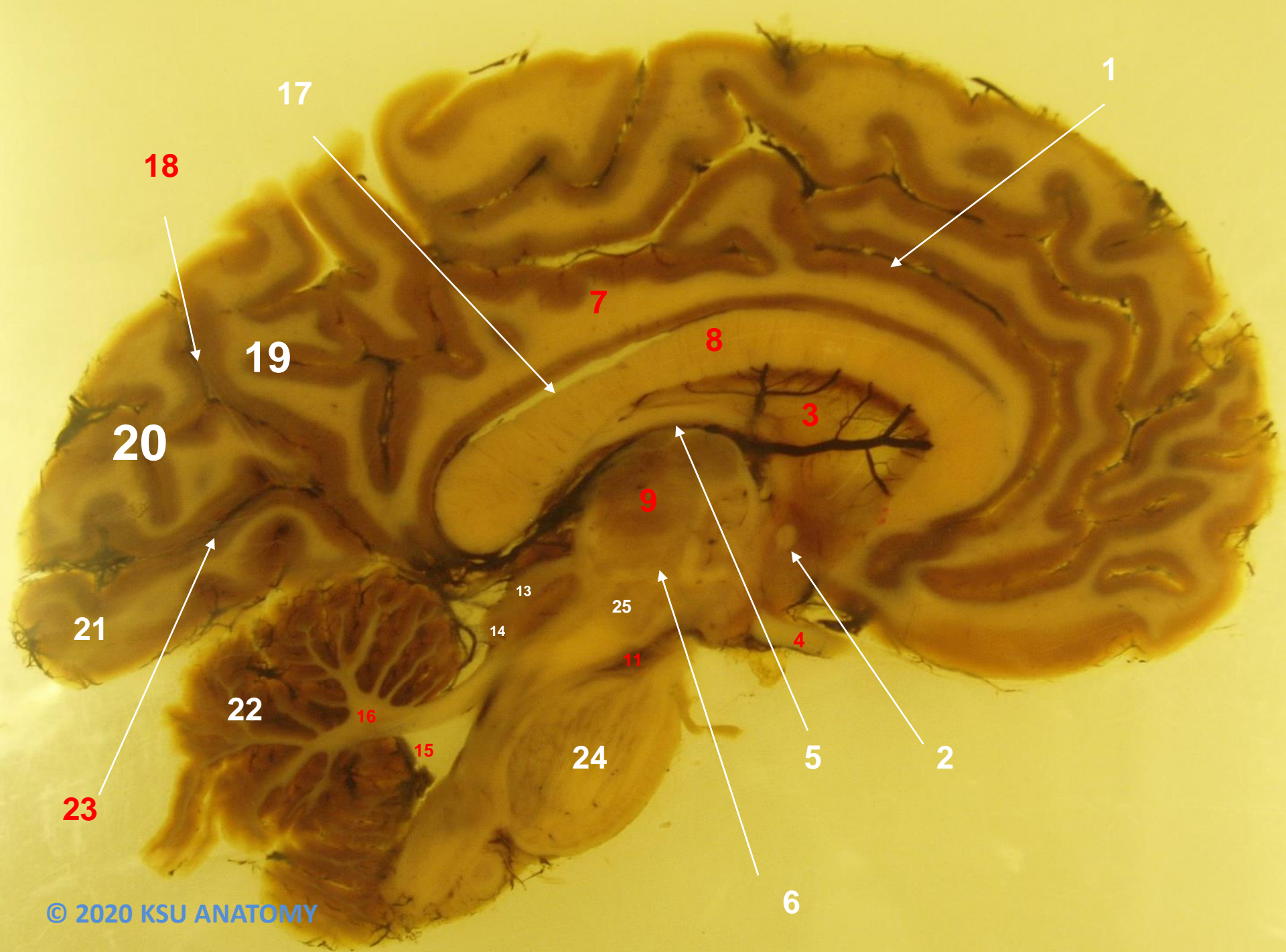


# Median Sagittal Section

1. Cingulate Gyrus.
2. Body of Corpus Callosum (C.C.).
3. Genu of C.C.
4. Rostrum of C.C.
5. Septum Pellucidum.
6. Fornix.
7. Splenium of C.C.
8. Optic Chiasma.
9. Mammillary Body.
10. Pineal Body
11. Cerebral Aqueduct.
12. Sup. Medullary Velum.

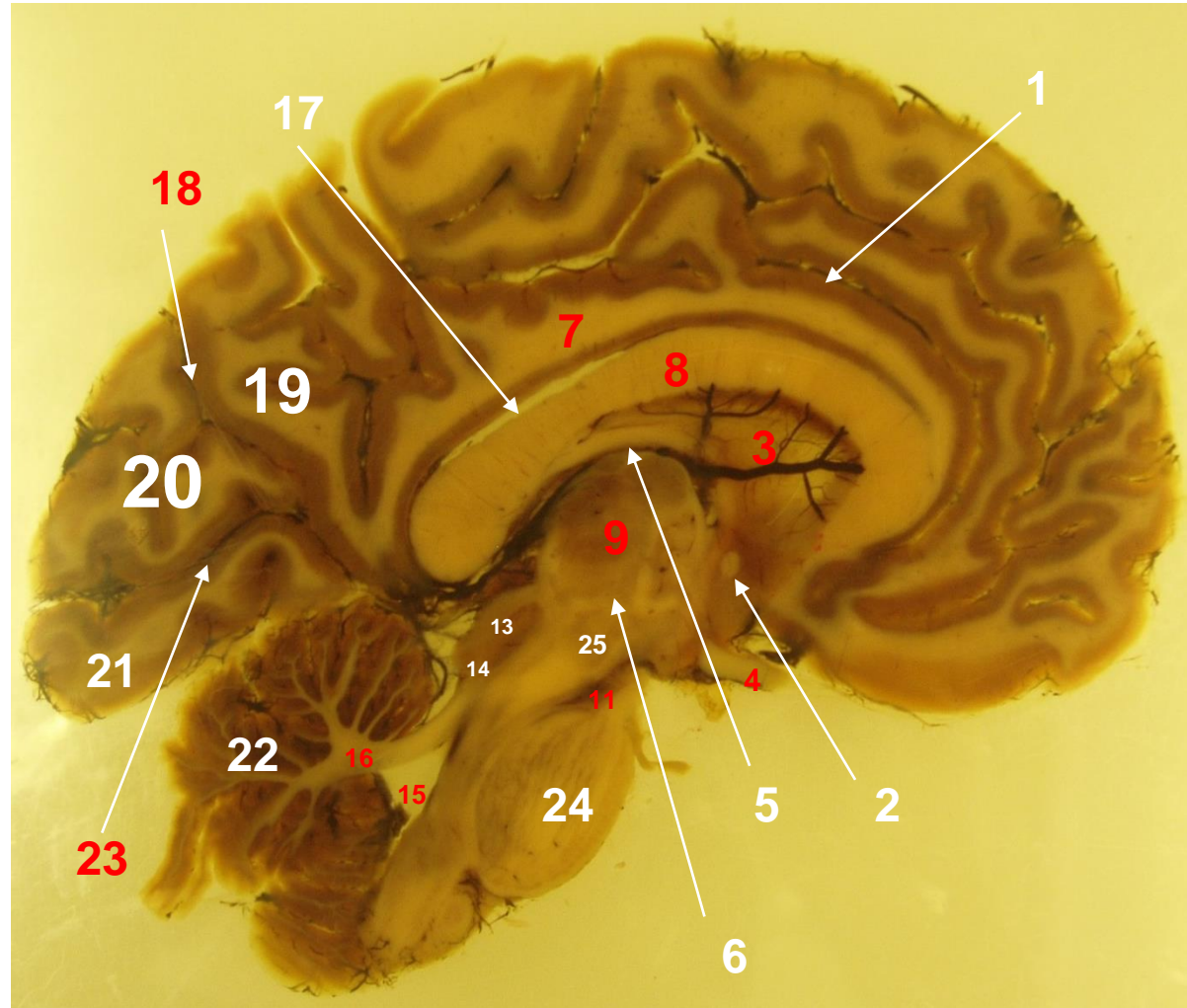






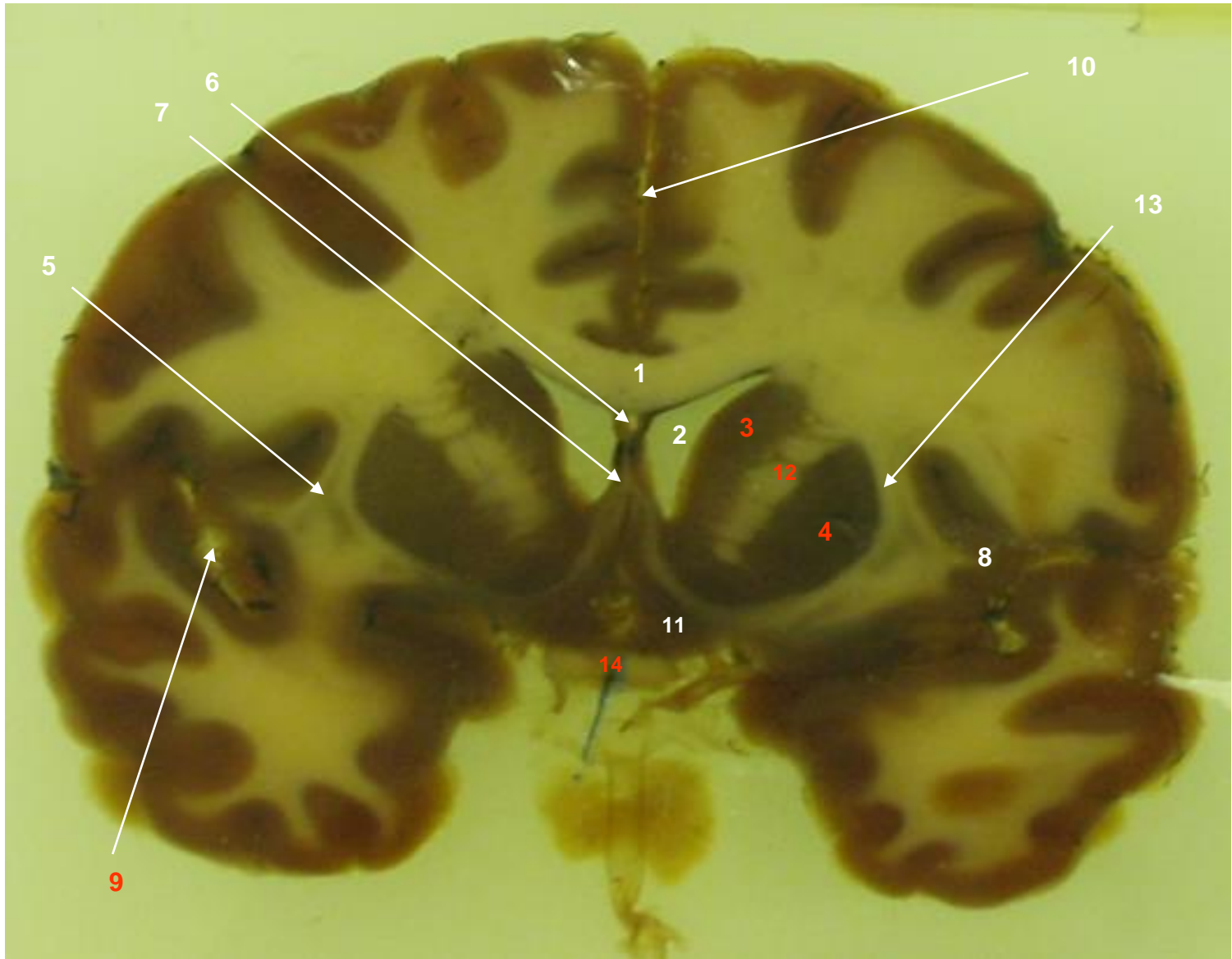
# Median Sagittal Section

- 13- Superior Colliculus.
- 14- Inferior Colliculus.
- 15- 4th Ventricle.
- 16- Superior Cerebellar Peduncle.
- 17- Callosal Sulcus.
- 18- Parieto-occipital Sulcus.
- 19- Precuneus.
- 20- Cuneus.
- 21- Lingual Gyrus.
- 22- Cerebellum.
- 23- Calcarine Sulcus.
- 24- Pons.
- 25- Crus Cerebri.



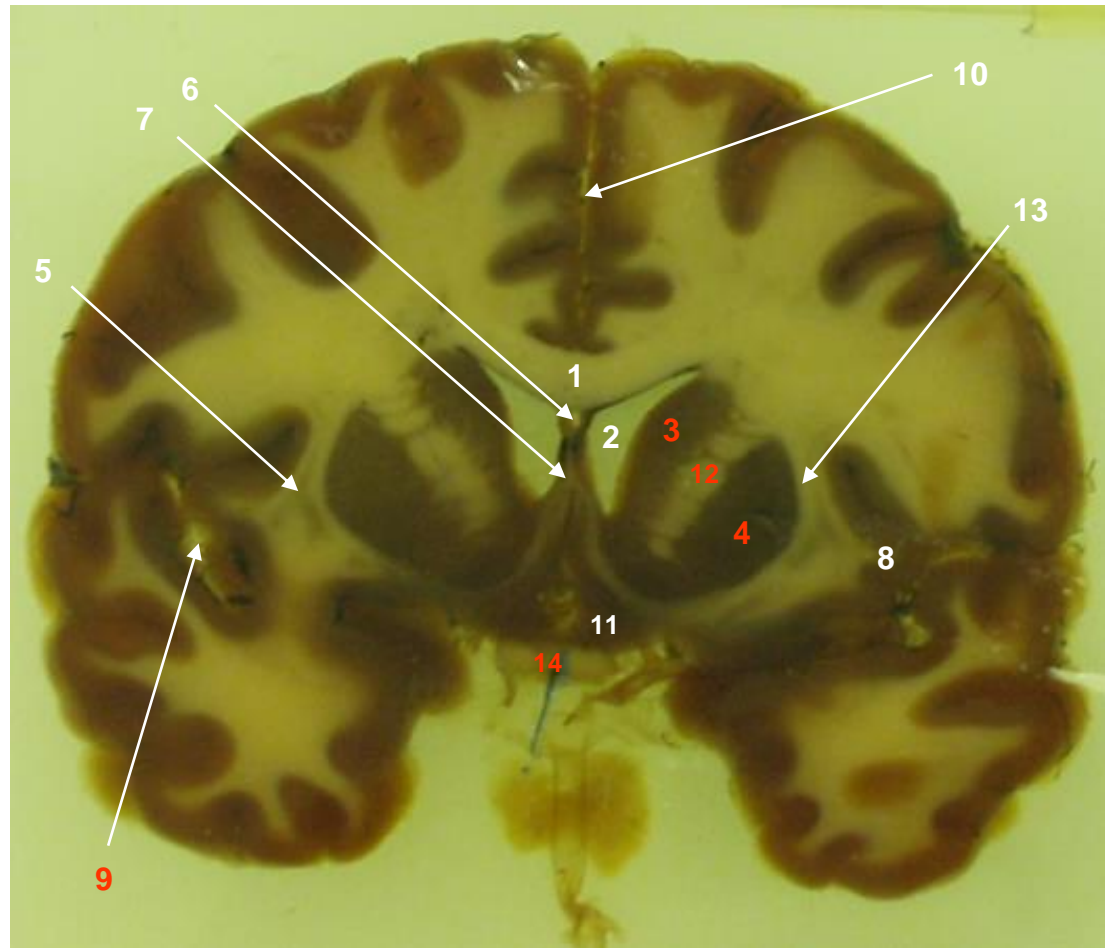


# Coronal Section I



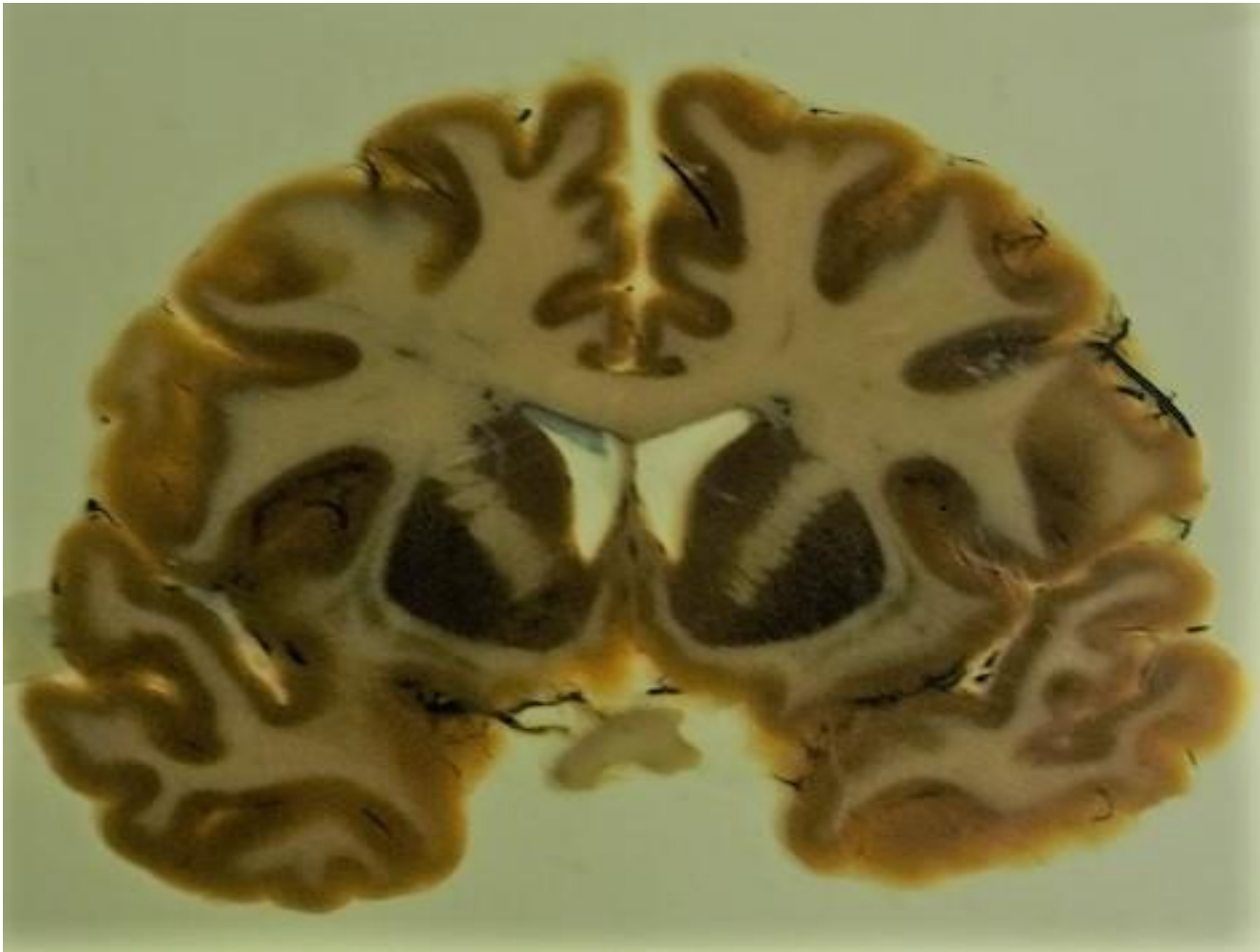
# Coronal Section I

- 1- Body of corpus callosum.
- 2- Anterior horn of lateral ventricle.
- 3- Head of caudate nucleus.
- 4- Putamen.
- 5- Claustrum.
- 6- Septum pellucidum.
- 7- Fornix.
- 8- Insula.
- 9- Lateral fissure.
- 10- Cerebral longitudinal fissure.
- 11- Subcallosal area.
- 12- Anterior limb of I.C.
- 13- External capsule.
- 14- Optic chiasma.

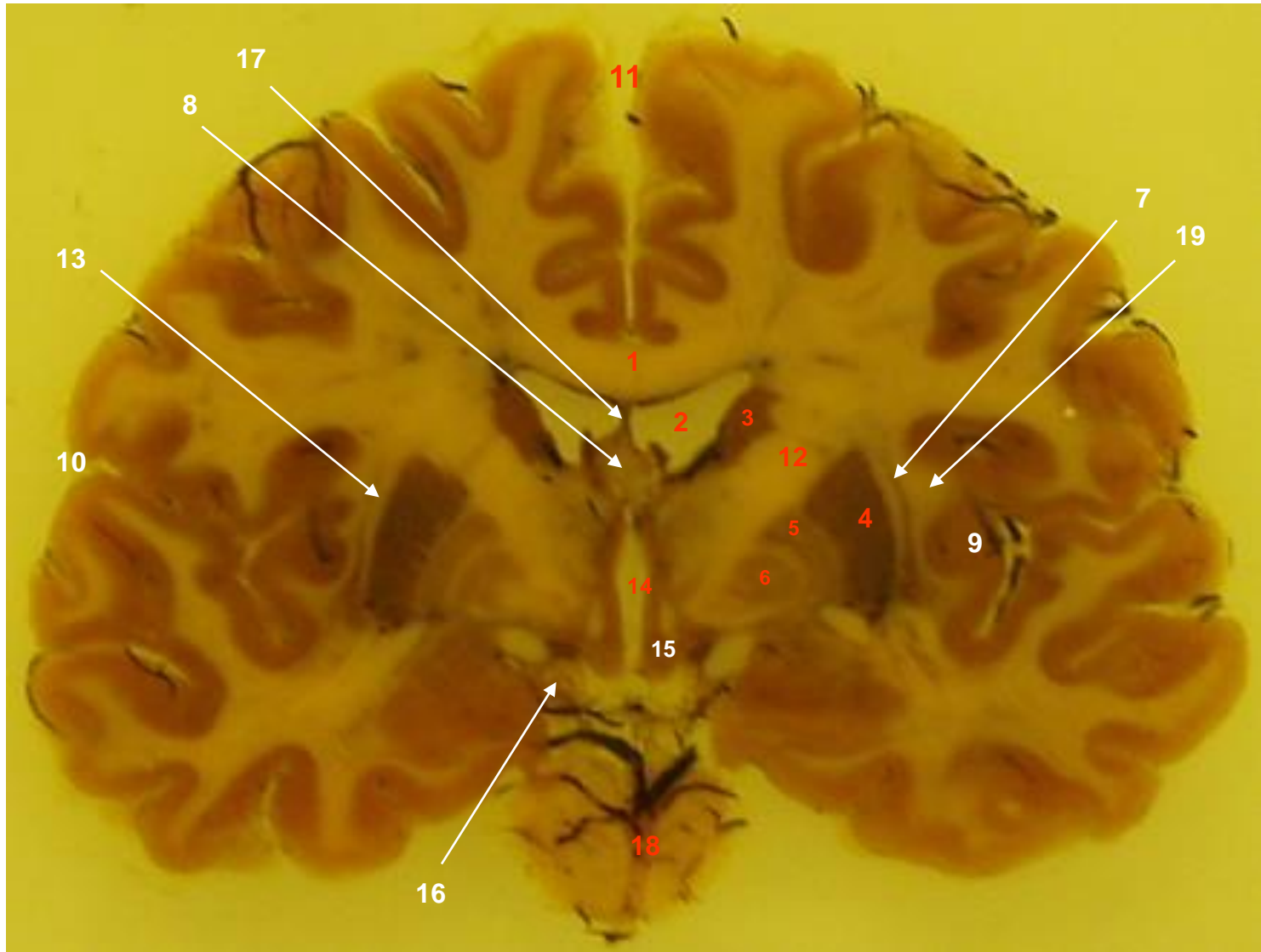




# Identify the Features



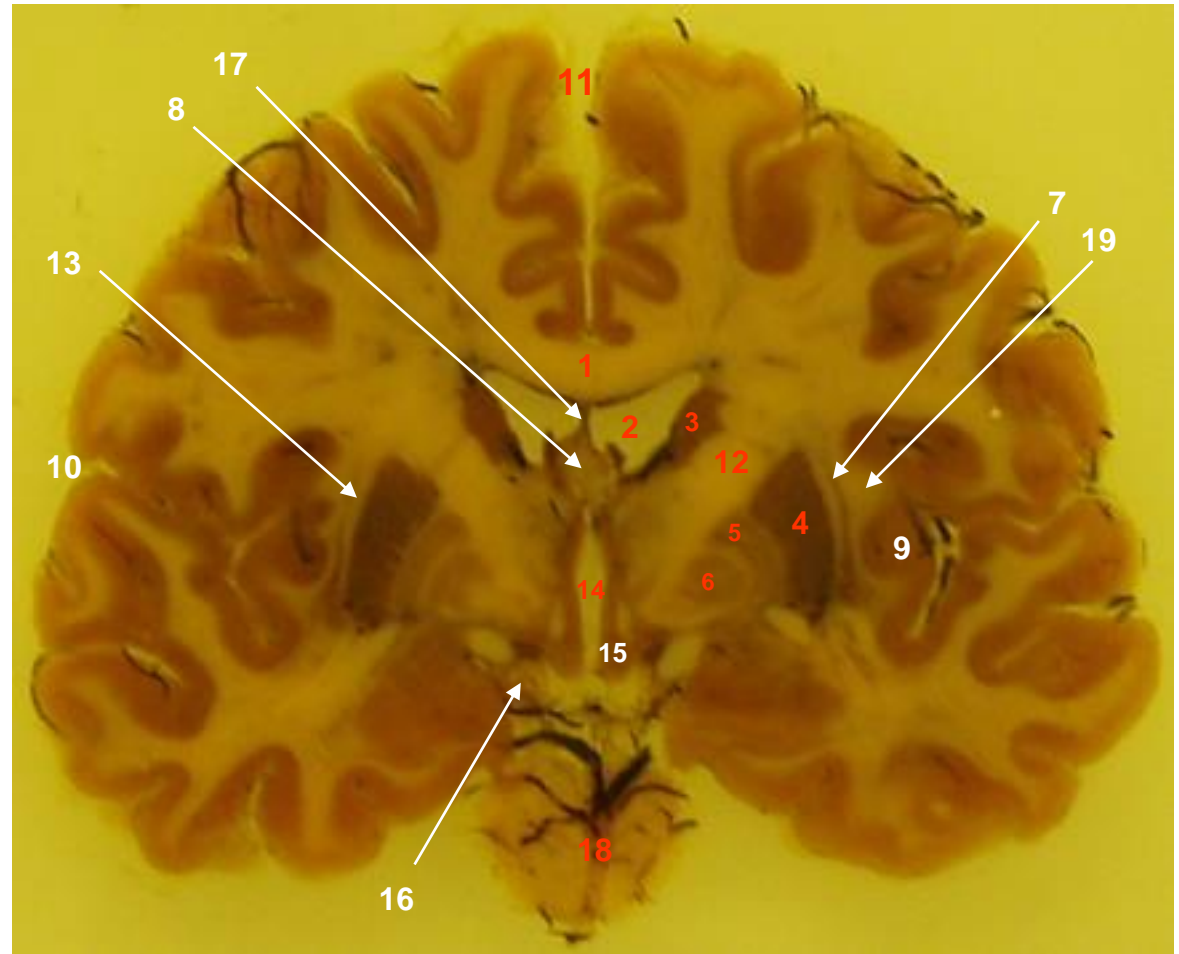
# Coronal Section II



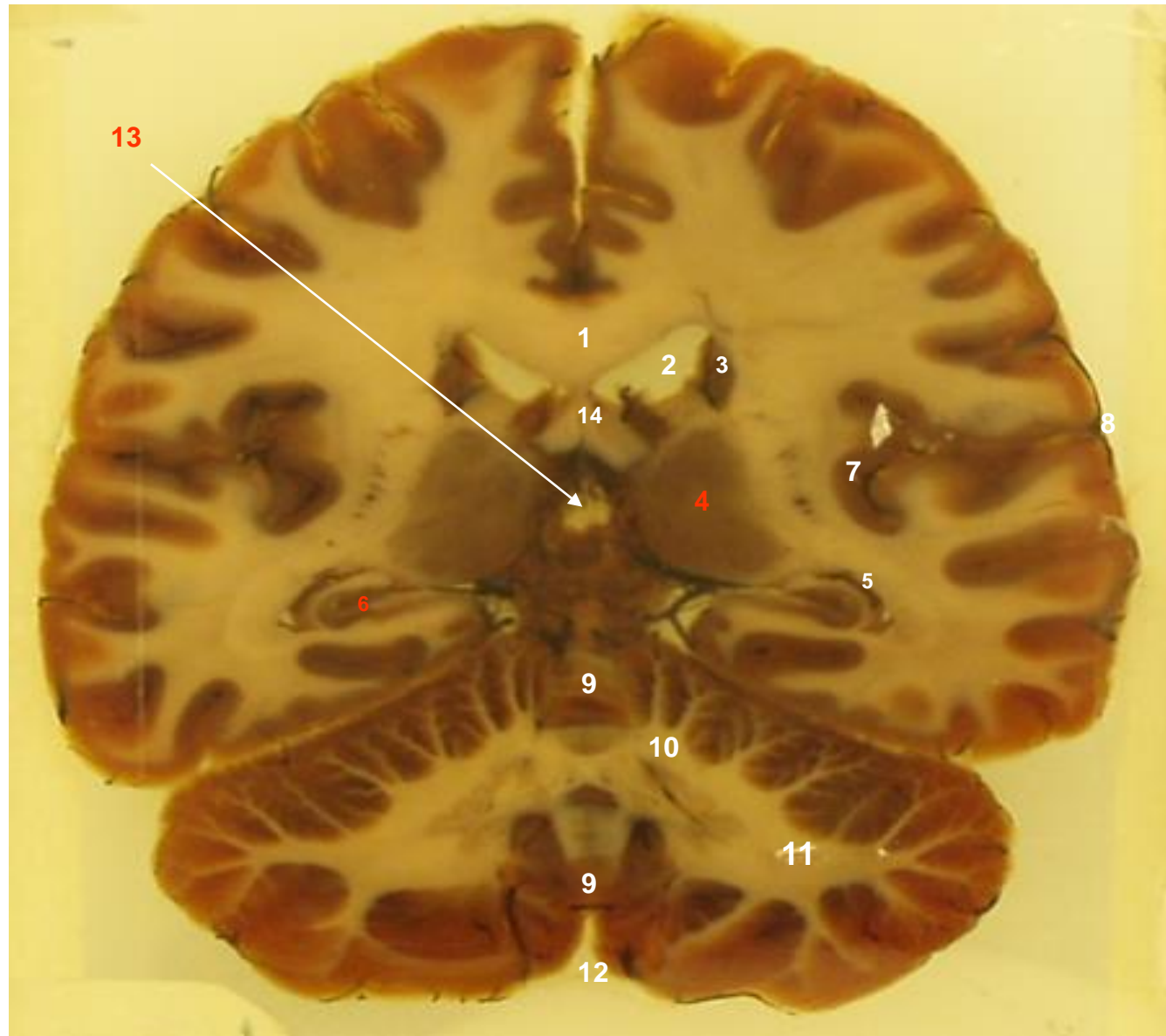


- 1- Body of corpus callosum.
- 2- Body of lateral ventricle.
- 3- Body of caudate nucleus.
- 4- Putamen.
- 5- Globus pallidus lateralis.
- 6- Globus pallidus medialis.
- 7- Claustrum.
- 8- Fornix.
- 9- Insula.
- 10- Lateral fissure.
- 11- Cerebral longitudinal fissure.
- 12- Anterior limb of I.C.
- 13- External capsule.
- 14- Third ventricle.
- 15- Hypothalamus.
- 16- Optic tract.
- 17- Septum pellucidum.
- 18- Pons.
- 19- Extreme capsule.

## Coronal Section II



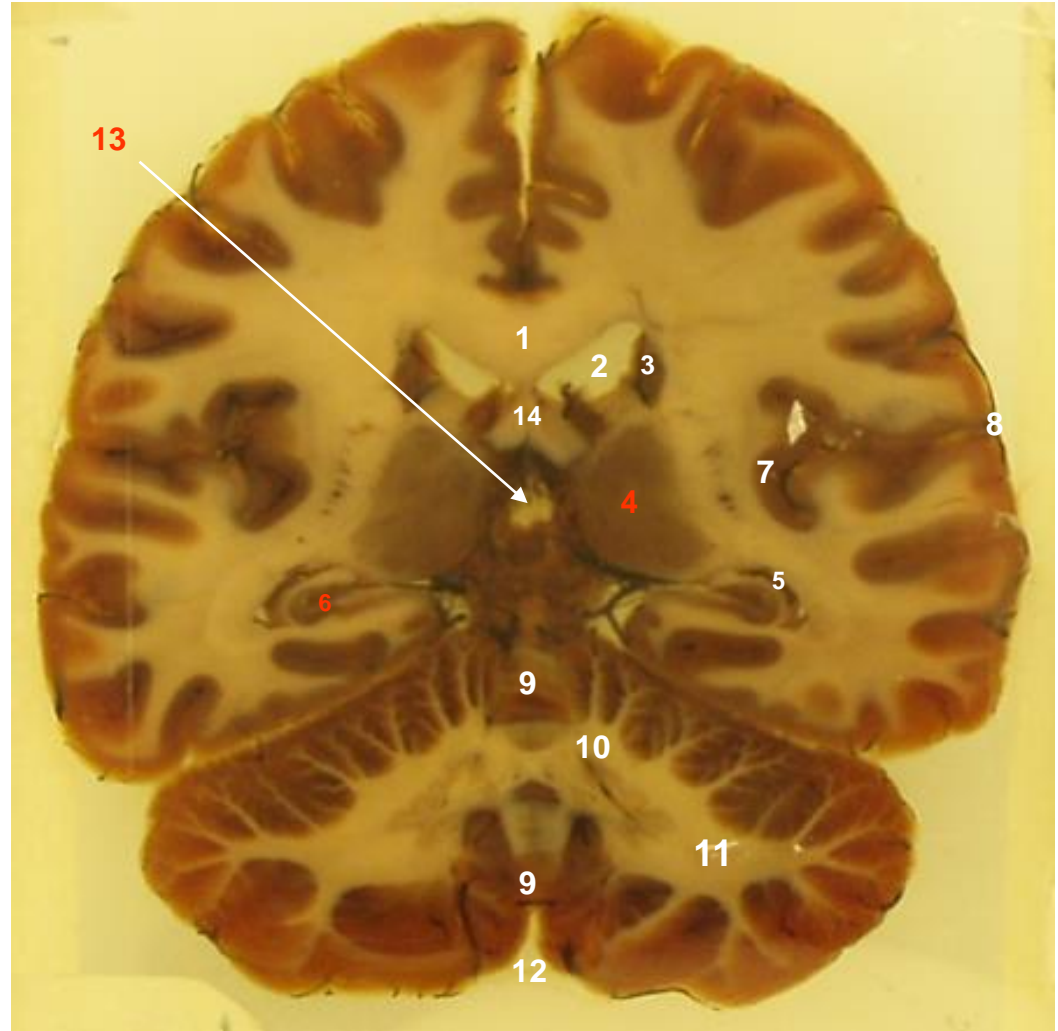
# Coronal Section III



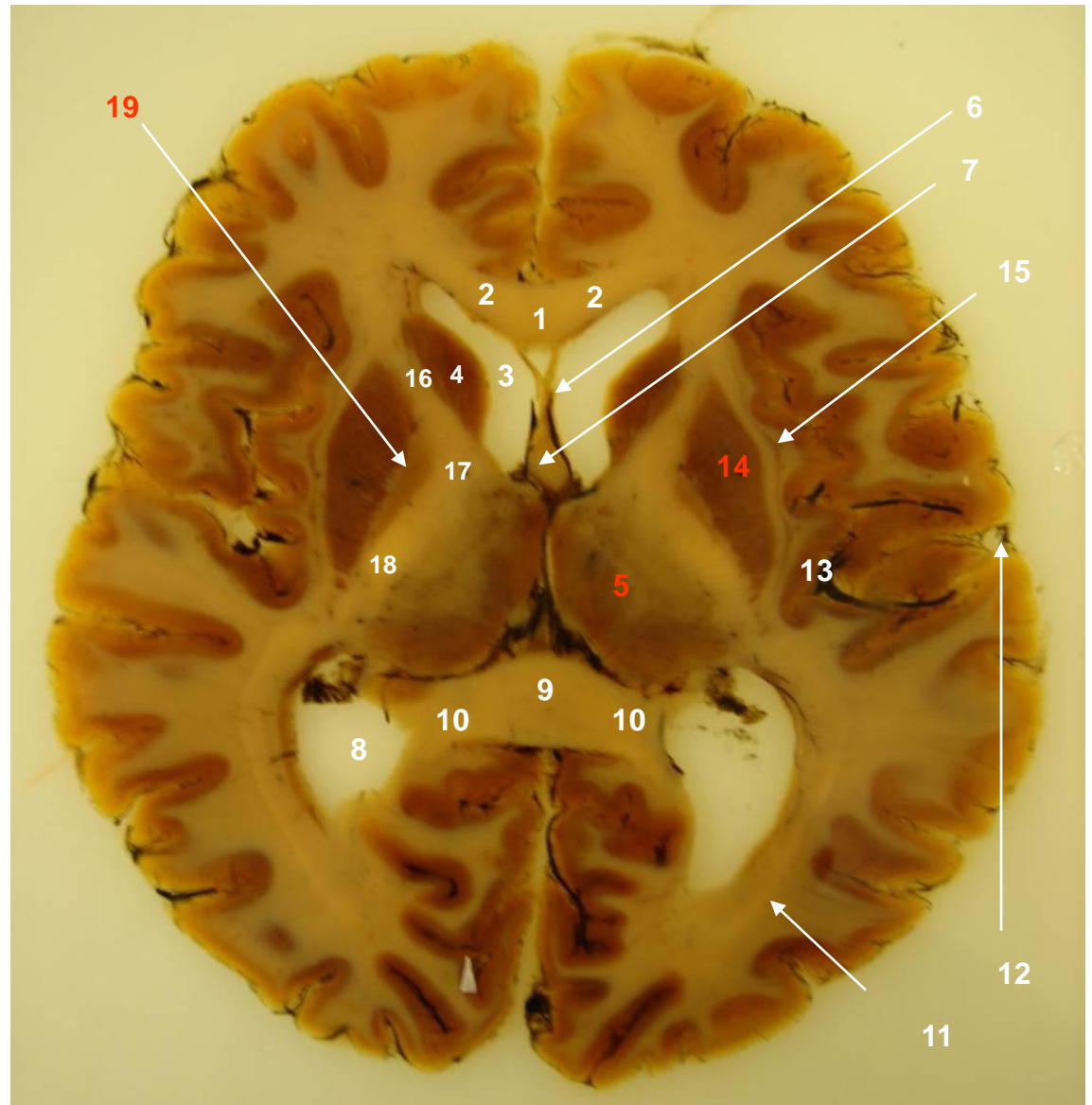


# Coronal Section III

- 1- Body of corpus callosum.
- 2- Body of lateral ventricle.
- 3- Body of caudate nucleus.
- 4- Thalamus.
- 5- Tail of caudate nucleus.
- 6- Hippocampus.
- 7- Insula.
- 8- Lateral fissure.
- 9- Vermis of cerebellum.
- 10- Superior cerebella peduncle.
- 11- Middle cerebellar peduncle.
- 12- Posterior cerebellar notch
- 13- Third ventricle
- 14- Fornix.

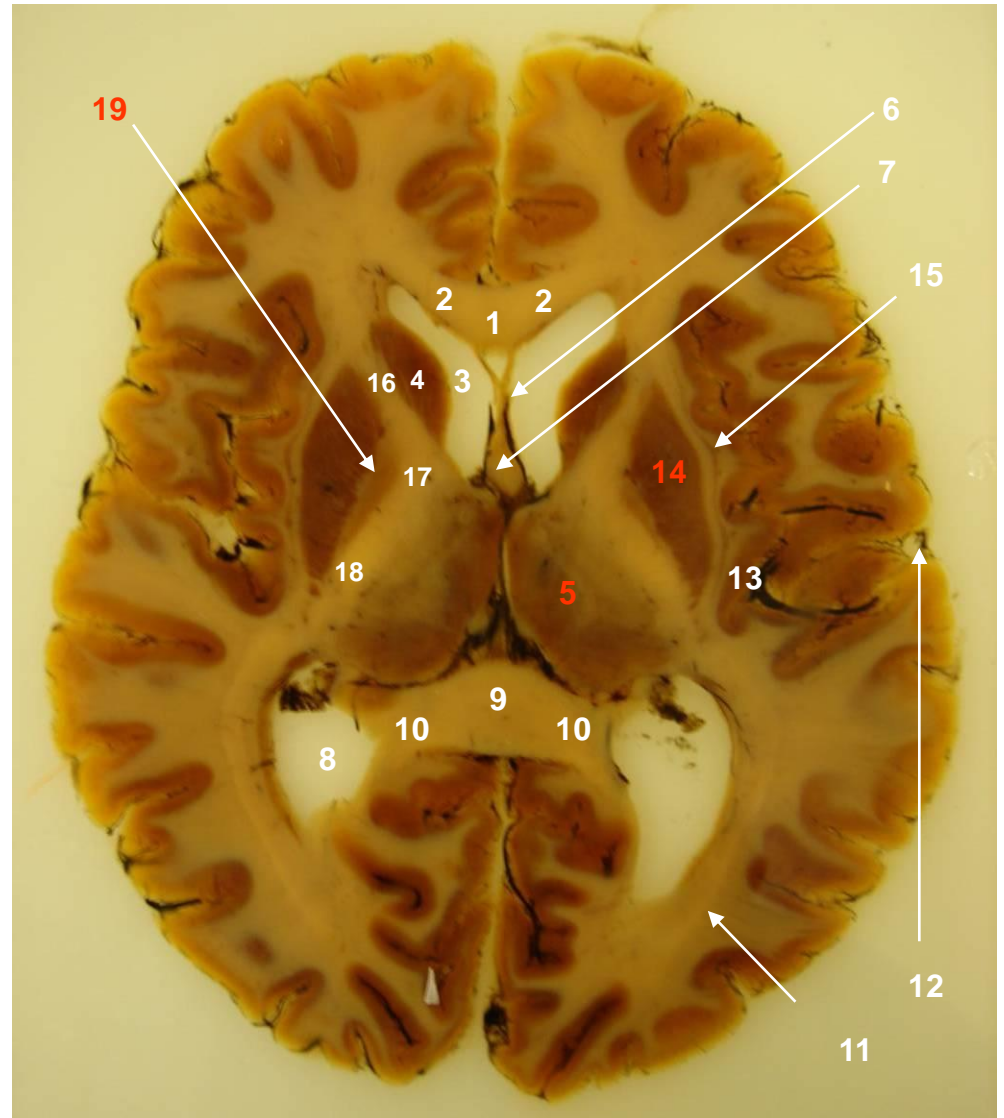


# Horizontal Section I



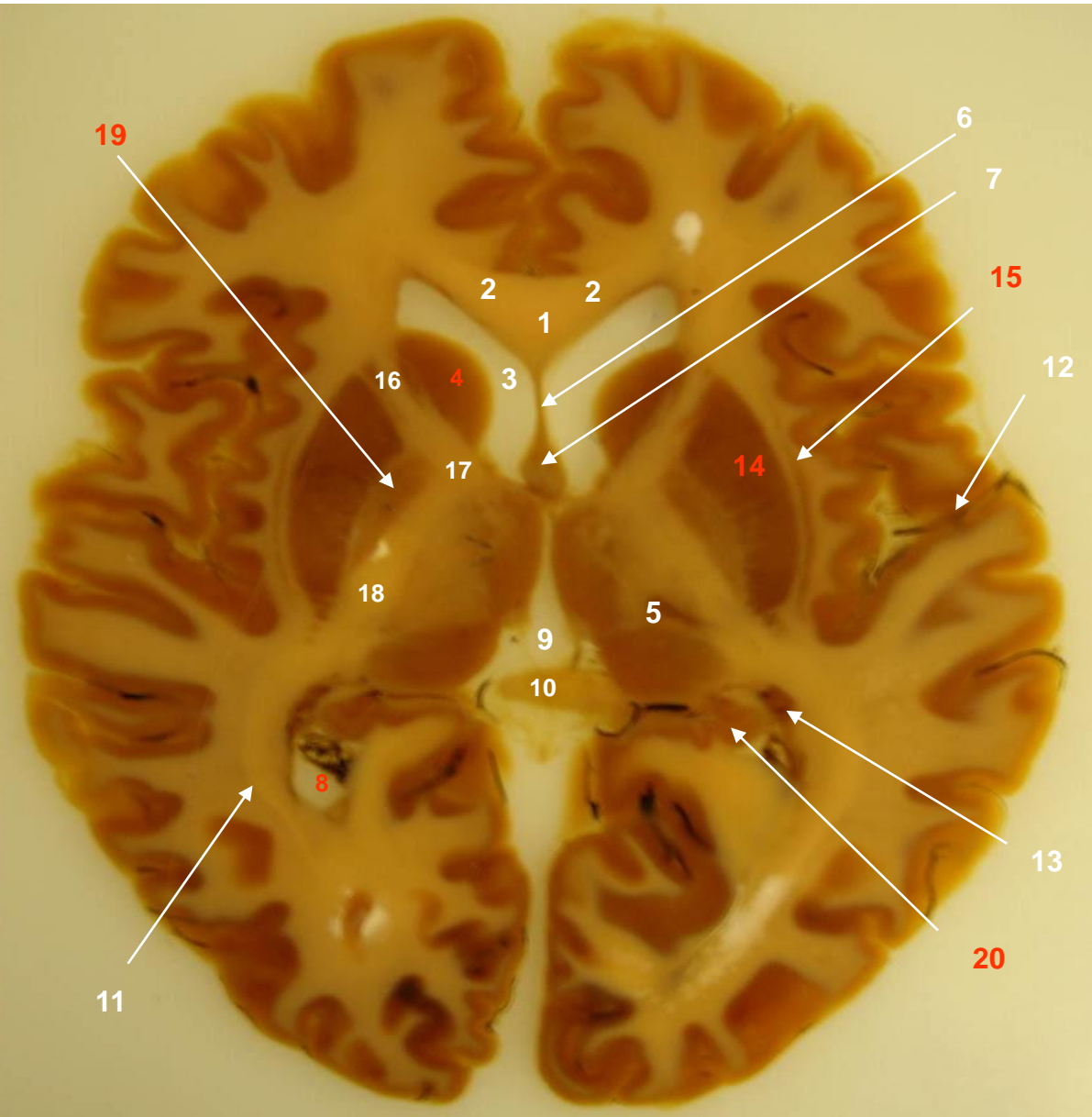
# Horizontal Section I

- 1- Genu of corpus callosum.
- 2- Forceps minor.
- 3- Anterior horn of lateral ventricle.
- 4- Head of caudate nucleus.
- 5- Thalamus.
- 6- Septum pellucidum.
- 7- Body of fornix.
- 8- Posterior horn of lateral ventricle.
- 9- Splenium of corpus callosum.
- 10- Forceps major.
- 11- Optic radiation.
- 12- Lateral sulcus.
- 13- Insula.
- 14- Putamen.
- 15- Claustrum.
- 16- Anterior limb of I.C.
- 17- Genu of I.C.
- 18- Posterior limb of I.C.
- 19- Globus Pallidus.



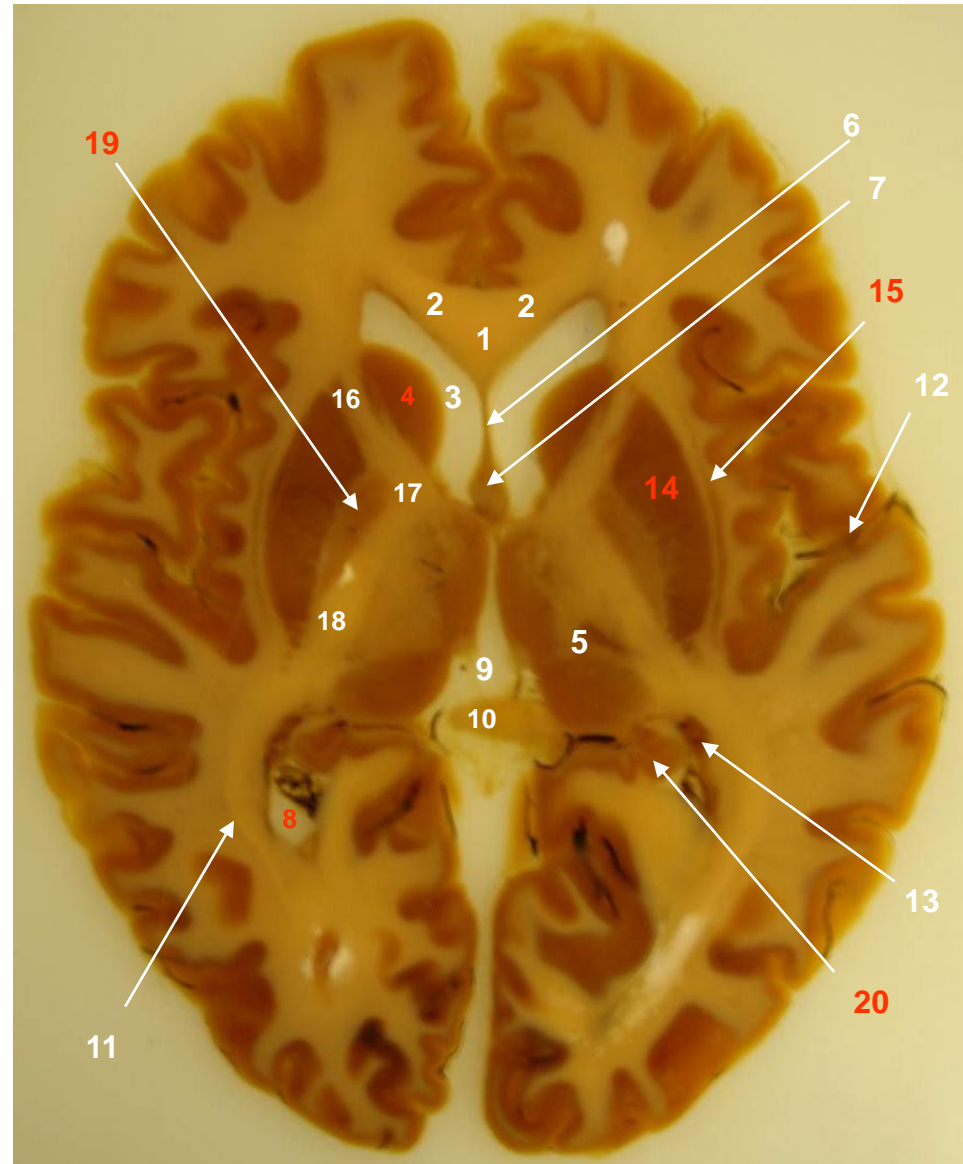


# Horizontal Section II

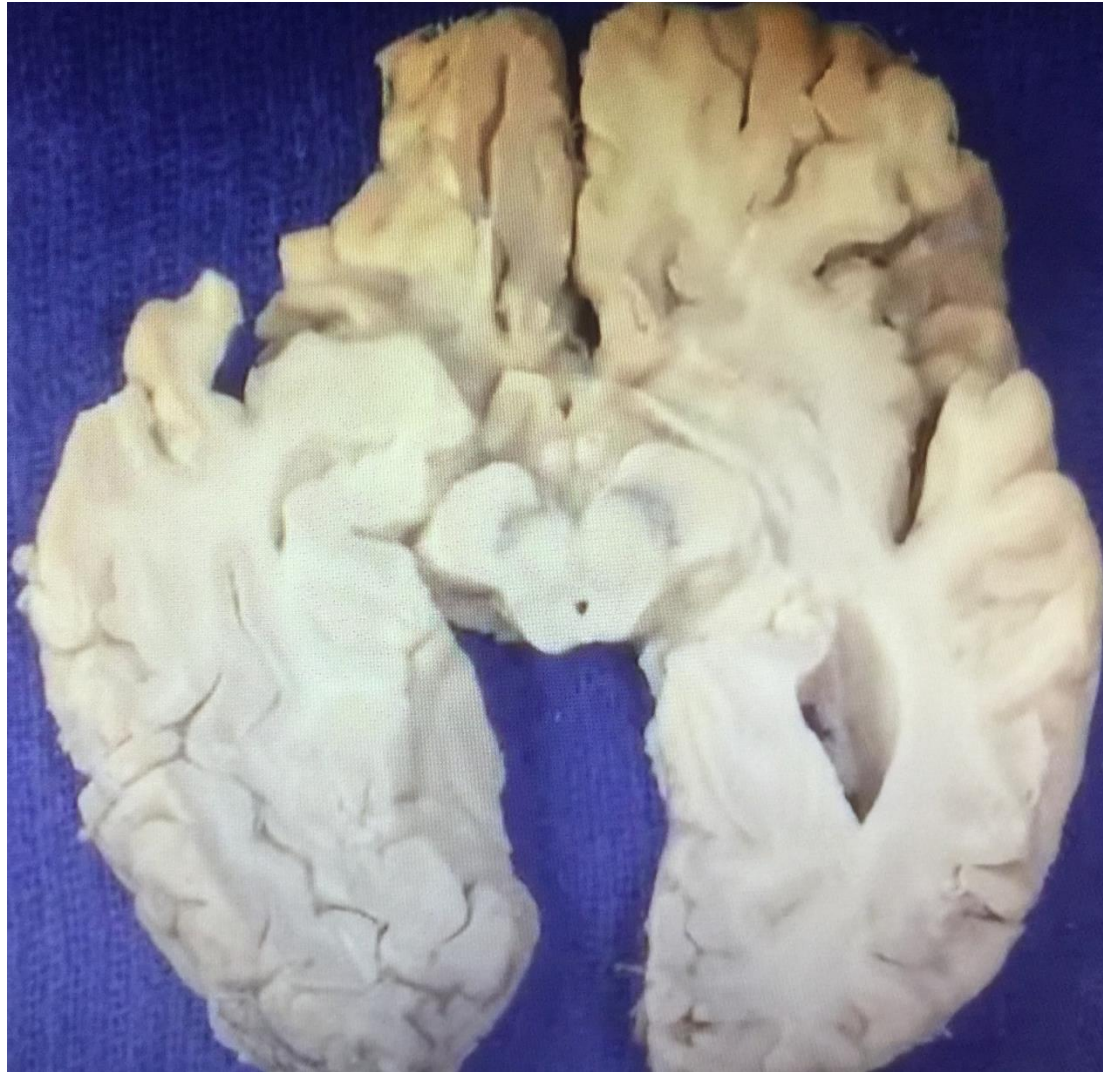


# Horizontal Section II

- 1- Genu of corpus callosum.
- 2- Forceps minor.
- 3- Anterior horn of lateral ventricle.
- 4- Head of caudate nucleus.
- 5- Thalamus.
- 6- Septum pellucidum.
- 7- Body of fornix.
- 8- Inferior horn of lateral ventricle.
- 9- Third ventricle.
- 10- Hypothalamus (most likely).
- 11- Optic radiation.
- 12- Lateral sulcus.
- 13- Tail of caudate nucleus.
- 14- Putamen.
- 15- Claustrum.
- 16- Anterior limb of I.C.
- 17- Genu of I.C.
- 18- Posterior limb of I.C.
- 19- Globus pallidus.
- 20- Hippocampus.



# Horizontal Section III





**Thank You**

## **Disclosure**

Please be advised that this work is intended for non-profit purely educational purposes. We used some images from the internet and other sources. We did our best to link all images to their original sources to preserve copyrights. If you are the owner of one of those images, and you are not satisfied with our copyright level, please contact us and let us know how to make things right. We deeply appreciate your cooperation and consideration.

Contact: **[anatomy@ksu.edu.sa](mailto:anatomy@ksu.edu.sa)**