

New notes on faunistics of the Histeridae (Coleoptera) from the Papuan region

DMITRY TELNOV ¹, SLAWOMIR MAZUR ², ANDRÉ SKALE ³, ANDREAS WEIGEL ⁴

1 – Dārza iela 10, Stopiņu novads, LV-2130, Dzidriņas, Latvia; e-mail: anthicus@gmail.com

2 – Department of Forest Protection and Ecology, WULS, Nowoursynowska 159, bld. 34, PL-02-776, Warszawa, Poland; e-mail: slawomir.mazur@wl.sggw.pl

3 – Wilhelm Kohlhoff Str. 3, D-95032, Hof/Saale, Germany; e-mail: andre.skale@online.de

4 – Am Schloßgarten 6, D-07381, Wernburg, Germany; e-mail: rosalia@versanet.de

TELNOV D., MAZUR S., SKALE A., WEIGEL A. 2016. NEW NOTES ON FAUNISTICS OF THE HISTERIDAE (COLEOPTERA) FROM THE PAPUAN REGION. - *Latvijas Entomologs* 53: 14-32.

Abstract: New information on fauna and ecology of the family Histeridae from the Moluccas and New Guinea is presented. Numerous new records are published for the first time. 40 species and over 200 specimens were processed.

Key words: Coleoptera, Histeridae, Papuan region, New Guinea, Moluccas, fauna.

Introduction

The term “Papuan Region” (or in the strict zoogeographic sense - the Papuan subregion of the Australian Region) is often listed in zoological or zoogeographic literature. Few specialists clearly define its borders (Darlington 1962, 1971; Telnov 2011). The region comprises the Moluccas, New Guinea with all satellite islands, and the Solomon Islands, e.g. the region East from Weber’s Line and North from Australia (Map 1).

According to the only existing account of the Papuan Histeridae (Lackner 2008), there are 137 species of Histeridae known from New Guinea, of which 76 are endemic to this island and its near satellites. Until today, there is no detailed existing account of the Histeridae for the Moluccas.

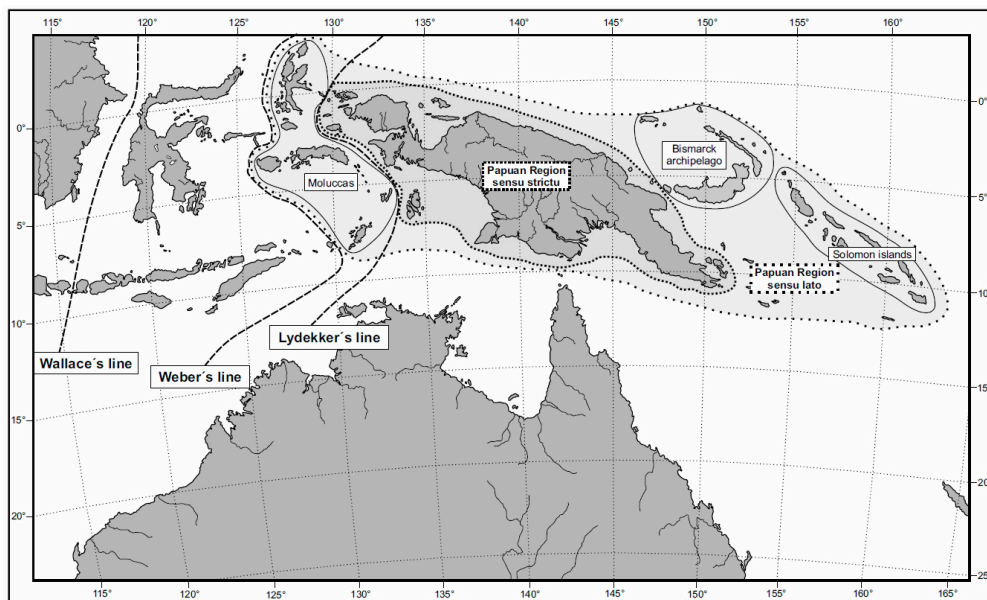
Material and methods

In total, 40 species were identified from over 200 specimens. Numerous species herewith recorded for the first time for the Papuan region, Indonesian part of New Guinea Island, Raja Ampat Islands, Transfly lowlands and the Moluccas.

Higher classification is based on Mazur (2011). Most specimens of *Eulomalus* COOMAN, 1937, *Eurylister* BICKHARDT, 1920, *Liopygus* LEWIS, 1981, *Platylomalus* COOMAN, 1948, *Paromalus* ERICHSON, 1834, and *Parepierus* BICKHARDT, 1913 were identified to genus level only. These incompletely identified taxa are not considered in the present paper.

Ecologically, most species listed below are subcortical predators of soft-bodied invertebrates and were sampled under bark of fallen tree trunks.

All our sampling localities, with exception of New Ireland Island and Transfly



Map 1. Study area (the Papuan biogeographical region) is shaded dark grey. Main geographical and biogeographical objects are named (from Telnov 2011).

lowlands, are from western and central parts of the Papuan region - the Moluccas and West New Guinea (Map 2).

Specimens were studied using a Leica S6D stereomicroscope; images were captured with a Canon EOS 450D SLR camera attached to the microscope, and CombineZP software was used for image stacking. All label data are given as in originals.

The following acronyms and abbreviations are used:

Acronyms for collections:

ASC – Collection André Skale, Hof / Saale, Germany;

AWC – Collection Andreas Weigel, Wernburg, Germany;

DTC – Collection Dmitry Telnov, Dzidriņas (Rīga), Latvia;

NME – Collection Naturkundemuseum Erfurt, Germany.

Other common abbreviations from labels:

E – East, env. – environs, ex. / exx – specimen(s), Is. – island, KL – beaten (from German: klopfen), Mts. – mountains, S – South, UWP – primary rainforest (from German: Urwald primär), UWS – secondary rainforest (from German: Urwald sekundär), vill. – village or little settlement. Some of the abbreviations employed may be not standard English language abbreviations.

New records

Epiechinus taprobanae LEWIS, 1892

Material: INDONESIA N-Molukken Bacan, 10km E Labuha, 120m, 0°38'07"S, 127°34'46"E 14.I.2006 leg. A. Skale UWP + plantage [1 ex. ASC]; INDONESIA Halmahera m. 2-3km N.Dolik, Dolik river 0°15'49"S, 127°42'40"E 18./20.I.2006 leg. A. Skale plantage + UWS [1 ex. ASC].

Notes: First record from the Papuan region and Halmahera.

***Epiurus biscissus* MARSEUL, 1880**

Material: INDONESIA W-PAPUA ca. 130km SE Kaimana, Omba (=Yamor) river, 10-20km from coast, S4°05'49"/E134°54'09", 10-20m, 09.-11.II.2011 leg. A. Skale [1 ex. ASC]; INDONESIA W-PAPUA vic. Kaimana, road 18 km NE, S3°31'11"/E133°40'15", 50-80m, 21.-25.II.2011 leg. A. Skale [1 ex. ASC].

Notes: First record from Indonesian New Guinea and Bird's Neck isthmus of New Guinea.

***Tribalus (Eutribalus) doriae* MARSEUL, 1871**

Material: INDONESIA W-PAPUA vic. Kaimana, road 17 km NE, S3°31'41"/E133°40'51", 50m, 31.I.2011 leg. A. Skale [2 exx ASC].

Notes: First record from the Papuan region and New Guinea.

***Tribalus (Eutribalus) koenigi* MARSEUL, 1864**

Material: W-PAPUA Raja Ampat Prov. Batanta Isl. mer., Wailebet 0°54'01"S, 130°39'37"E 18.-21.I.2004 leg. A. Skale UWP/Rodung [1 ex. ASC]; W-PAPUA Raja Ampat Prov. Batanta Isl. mer., 12km W Wailebet 0°54'54"S, 130°24'15"E 20.I.2004 leg. A. Skale logging area [1 ex. ASC]; INDONESIA Halmahera NW 7km S Jailolo, 200m, 1°1'18"N, 127°31'39"E 26/27.I.2006 leg. A. Skale, UWP + clearing [1 ex. ASC]; W-PAPUA Raja Ampat Prov. Salawati Isl. bor., Kalam 0°57'11"S, 130°40'11"E 21.-24.I.2004 leg. A. Weigel [3 exx AWC]; INDONESIA E, Prov. Raja Ampat, Misool SW, distr. Misool Utara, Aduwey (Adua) vill. ~2-5 km NNW, valley of River Hakau, 01°58'46"S, 129°54'37"E, 25-27.III.2009, primary lowland rainforest, under rotten bark of fallen tree, leg. D. Telnov & K. Greçe [1 ex. DTC].

Notes: First record from Raja Ampat Islands: Batanta, Misool & Salawati.

***Tribalus (Eutribalus) marseuli* GOMY, 1985**

Material: INDONESIA Irian Jaya, 50km S Nabire, Pusppenssat, 30.XII.1996, leg. A. Weigel [2 exx AWC]; W-PAPUA, Manokwari Prov., ca. 16km NW Ransiki, Anggi Gida, Kampung Itkau, 1890m, 01°24'23"S, 133°55'53"E, 04.III.2007, leg. A. Weigel [1 ex. AWC]; INDONESIA E, West PAPUA, S Bird's Neck, Kaimana 47 km E, Triton bay, Kamaka (former Warika) vill. env., 3°46'42"S, 134°10'24"E, 50-130 m, 10.IX.2010, secondary rainforest on limestone & clearings, under lose bark of fallen tree, leg. D. Telnov [1 ex. DTC]; INDONESIA E, West PAPUA, Fak-Fak peninsula, Fak-Fak 5-7 km N, 2°53'26"S, 132°18'22"E, 300-400 m, 23.IX.2010, primary lowland rainforest on limestone, under lose bark of dead standing tree, leg. D. Telnov [6 exx DTC]; INDONESIA W-PAPUA vic. Kaimana, road 17 km NE, S3°31'41"/E133°40'51", 50m, 31.I.2011 leg. A. Skale [2 exx ASC].

Notes: First record from Bird's Neck isthmus of New Guinea and Onin Peninsula (referred as "Fak-Fak peninsula" on original label).

***Asterix appendiculatus* (J. SCHMIDT, 1893)**

Material: INDONESIA E, West PAPUA, S Bird's Neck, Kaimana 40 km E, Triton bay, Lobo vill. env., 3°44'08"S, 134°05'40"E, 200-300 m, 15-17.IX.2010, primary rainforest on limestone & clearings, under rotten wet bark of large fallen trunk, leg. D. Telnov [1 ex. DTC].

Notes: First record from Indonesian New Guinea and Bird's Neck isthmus of New Guinea.

***Asterix papuensis* (MARSEUL, 1864)**

Material: W-PAPUA Manokwari Prov. 18km NE Ransiki, 01°21.05'S, 134°12.46'E, 02.-06.III.2007 leg. A. Skale cutting area [1 ex. ASC].

Notes: First record from Indonesian New Guinea and Bird's Head Peninsula.

***Hololepta* (s. str.) *elongata* ERICHSON, 1834**

Material: PAPUA NEUGUINEA New Ireland prov., New Ireland, Hans Meyer Range, 60km SE Namatanai, Hirudan River, 50m 04°00'41"S, 152°50'79"E, 09.III.2000 leg. A. Weigel [5 exx AWC]; INDONESIA Halmahera NW, 7km S Jailolo, 200m, 1°1'18"N, 127°31'39"E 26/27.I.2006 leg. A. Weigel UWP + clearing [1 ex. AWC]; INDONESIA Halmahera NW 7km S Jailolo, 200m, 1°1'18"N, 127°31'39"E 26/27.I.2006 leg. A. Skale, UWP + clearing [1 ex. ASC]; INDONESIA E, West PAPUA, S Bird's Neck, Kaimana 40 km E, Triton bay, Lobo vill. env., 3°44'08"S, 134°05'40"E, 200-300 m, 15-17.IX.2010, primary rainforest on limestone & clearings, under rotten wet bark of large fallen trunk, leg. D. Telnov [1 ex. DTC]; INDONESIA W-PAPUA ca. 94km SE Kaimana, ca. 10km NW Lakahia island, S4°01'34"/ E134°32'49", 12.II.2011 leg. A. Skale [1 ex. ASC]; INDONESIA W-PAPUA vic. Kaimana, road 18 km NE, S3°31'11"/ E133°40'15", 50-80m, 21.-25.II.2011 leg. A. Skale [2 exx ASC].

Notes: First record from Bird's Neck isthmus of New Guinea, Halmahera and New Ireland.

***Hololepta* (s. str.) *immarginata* J. SCHMIDT, 1889**

Material: INDONESIA, W-PAPUA, Nabire, road Nabire - Ilaga, IX.1991, leg. M. Balke [1 ex. NME]; INDONESIA Irian Jaya, Biak NE, 10km N Bosnik, 10.II.1998, prim. Urwald, leg. A. Weigel KL [1 ex. AWC]; INDONESIA Irian Jaya, Asori N Somyangga, 02°37'S, 136°13'E UWP KL 07.I.1999 leg. A. Weigel [1 ex. AWC]; W-PAPUA Raja Ampat Prov. Batanta Isl. bor., 9 km W Yensawai, Ross-River 0°49'23"S, 130°35'52"E 17.I.2004 leg.

A. Weigel UWP [1 ex. AWC]; INDONESIA N-Molukken, Bacan, 10km E Labuha, 120m, 0°38'07"S, 127°34'46"E 14.I.2006 leg. A. Weigel UWP + plantage [2 exx AWC]; W-PAPUA Manokwari Prov. ca. 20km W Manokwari, Prafi, 160m, 00°53.57'S, 133°55.06'E 08.III.2007 leg. A. Skale cutting area [1 ex. ASC]; INDONESIA E, West PAPUA, S Bird's Neck, Kaimana 40 km E, Triton bay, Lobo vill. env., 3°44'08"S, 134°05'40"E, 200-300 m, 15-17.IX.2010, primary rainforest on limestone & clearings, under rotten wet bark of large fallen trunk, leg. D. Telnov [4 exx DTC]; INDONESIA W-PAPUA, ca. 50km SE Kaimana, Triton bay, vic. Kamaka village, S3°49'50"/ E134°11'27", 10-50m, 02.-05.II.2011 leg. A. Weigel (006) [1 ex. AWC].

Notes: First record from Indonesian New Guinea, Biak Island, Raja Ampat Islands: Batanta.

***Hololepta* (s. str.) *indica* ERICHSON, 1834**

Material: INDONESIA Irian Jaya, Nabire 70km W, Gariau, Yamor lake, 03°42"S, 134°54"E, 2.III.1998, leg. A. Weigel [1 ex. AWC]; INDONESIA N-Molukken Bacan, 10km E Labuha, 120m, 0°38'07"S, 127°34'46"E 14.I.2006 leg. A. Skale UWP + plantage [1 ex. ASC]; INDONESIA Halmahera m. 2-3km N. Dolik, Dolik river 0°15'49"S, 127°42'40"E 18./20.I.2006 leg. A. Skale plantage + UWS [2 exx ASC]; INDONESIA Halmahera NW 7km S Jailolo, 200m, 1°1'18"N, 127°31'39"E 26/27.I.2006 leg. A. Skale, UWP + clearing [2 exx ASC]; W-PAPUA Raja Ampat Prov. Salawati Isl. bor., 8 km S Kalam 01°01'26"S, 130°40'53"E 23.I.2004 leg. A. Skale logging area [1 ex. ASC]; INDONESIA, prov. Maluku Utara (North Moluccas), Halmahera tengah (Central), Weda Selatan dist., Loleo vill. SW env., Tilope vill. 8 km SW, 0°13'58,16"N 127°54'27,18"E, 10.IX.2007 secondary lowland forest, under

bark of rotten *Ficus* sp. trunk, leg. D.Telnov & K.Greke [28 exx DTC]; INDONESIA E, West PAPUA, S Bird's Neck, Kaimana 47 km E, Triton bay, Kamaka (former Warika) vill. env., 3°46'42"S, 134°10'24"E, 50-130 m, 07.IX.2010, gardens, under lose bark of dry fallen tree, leg. D.Telnov [1 ex. DTC]; INDONESIA E, West PAPUA, S Bird's Neck, Kaimana 35-40 km E, Triton bay, River Lengguru valley upriver from Oray vill., 3°43'26"S, 134°06'06"E, 9-30 m, 13.IX.2010, primary rainforest on limestone, under lose rotten bark of fallen tree, leg. D.Telnov [1 ex. DTC]; INDONESIA W-PAPUA vic. Kaimana, road 10 km NE, S3°34'42"/E133°42'41", 40m, 01.II.2011 leg. A. Skale [1 ex. ASC]; INDONESIA W-PAPUA ca. 50km SE Kaimana, Triton bay, vic. Kamaka village, S3°49'50"/E134°11'27", 10-50m, 02.-05.II.2011 leg. A. Skale [1 ex. ASC]; INDONESIA or KEI-ISLANDS ca. 10km W Tual city, vic. Ohoidertawun village, 10m, S5°37'13"/E132°39'20" 17.-20.II.2011 leg. A. Skale [1 ex. ASC].

Notes: First record from Kei Islands, Raja Ampat Islands: Salawati and Bird's Neck isthmus of New Guinea.

***Plaesius* (s. str.) *ellipticus* MARSEUL, 1853**

Material: INDONESIA E, West PAPUA, S Bird's Neck, Kaimana 40 km E, Triton bay, Lobo vill. env., 3°44'08"S, 134°05'40"E, 200-300m, 15-17.IX.2010, primary rainforest on limestone & clearings, under rotten & very wet bark of large fallen trunk, among Diptera larvae, leg. D.Telnov [4 exx DTC]; INDONESIA W-PAPUA vic. Kaimana, road 18 km NE, S3°31'11"/E133°40'15", 50-80m, 21.-25.II.2011 leg. A. Skale [1 ex. ASC].

Notes: First record from Bird's Neck isthmus of New Guinea.

***Plaesius* (s. str.) *javanus* ERICHSON, 1834**

Material: W-PAPUA Raja Ampat Prov.

Batanta Isl. mer., 12km W Wailebet 0°54'54"S, 130°24'15"E 20.I.2004 leg. A.Skale logging area [1 ex. ASC].

Notes: First record from Raja Ampat Islands: Batanta.

***Plaesius* (s. str.) *ruptistrius* LEWIS, 1906**

Material: INDONESIA, W-PAPUA, Nabire, Wondiwoi Mts., VI.1998, leg. M.Balke [1 ex. NME]; W-PAPUA Raja Ampat Prov. Salawati Isl. or., Kalobo 01°03'15"S, 131°04'32"E 24.-28.I.2004 leg. A.Skale [3 exx ASC]; W-PAPUA Manokwari Prov. ca. 20km W Manokwari, Prafi, 160m, 00°53.57' S, 133°55.06'E 08.III.2007 leg. A. Skale cutting area [2 exx ASC]; INDONESIA W-PAPUA, vic. Kaimana, road 10 km NE, S3°34'42"/E133°42'41", 40m, 01.II.2011 leg. A. Weigel (002) [1 ex. AWC].

Notes: First record from Bird's Head Peninsula & Bird's Neck isthmus of New Guinea and Raja Ampat Islands: Salawati.

***Pacifister* *urvillei* (LE GUILLOU, 1844)**

Material: INDONESIA Irian Jaya, 170km S Nabire, Epomani, 1150m, 06.I.1997, leg. A. Weigel [1 ex. AWC]; INDONESIA Irian Jaya, 170km S Nabire, Epomani, 1150m, 06.I.1997, leg. A. Weigel [1 ex. AWC]; INDONESIA, Westpapua, Nabire, Kali Bobo, IV.1998, leg. M. Balke [3 exx NME]; W-PAPUA Raja Ampat Prov. Salawati Isl. bor., Kalam 0°57'11"S, 130°40'11"E 21.-24.I.2004 leg. A.Weigel [1 ex. AWC]; W-PAPUA Manokwari Prov. vic. Mokwam (Siyoubbrig), 1400-1800m, 01°06.26'S, 133°54.41'E, 24.-28.II.2007 leg. A. Skale sec./prim.forest [1 ex. ASC].

Notes: First record from Raja Ampat Islands: Salawati.

***Platysoma* (s. str.) *aureoliferum* MARSEUL, 1864**

Material: INDONESIA Irian Jaya, Biak NE, 10km N Bosnik, 10.II.1998, prim.

Urwald, leg. A. Weigel KL [1 ex. AWC]; INDONESIA Irian Jaya, Nabire 70km W, Gariau, Yamor lake, 03°42'S, 134°54'E, 2.III.1998, leg. A. Weigel [1 ex. AWC].

Notes: First record from Bird's Neck isthmus of New Guinea.

***Platysoma (s. str.) crybripygus* MARSEUL, 1864**

Material: INDONESIA Irian Jaya, Biak NE, Mara, 14.II.1998, leg. A. Weigel [1 ex. AWC]; INDONESIA Irian Jaya, Japen SE, 20m E Serui, 02.-05.I.1999 prim.Urw., leg. A. Weigel KL [1 ex. AWC]; INDONESIA Irian Jaya, Nabire 70km W, Gariau, Yamor lake, 03°42'S, 134°54'E, 2.III.1998, leg. A. Weigel [1 ex. AWC]; W-PAPUA Raja Ampat Prov. Batanta Isl. bor., Waywesar 0°45'26"S, 130°46'55"E 12.-15.I.2004 leg. A. Skale UWP [1 ex. ASC]; INDONESIA, Halmahera isl., 2-3 km N Dolik river, 18./20.2006, leg. A. Skale [2 exx ASC, 2 exx. NME]; INDONESIA E, West PAPUA, S Bird's Neck, Kaimana 47 km E, Triton bay, Kamaka (former Warika) vill. env., 3°46'42"S, 134°10'24"E, 50-130 m, 07.IX.2010, gardens, under lose bark of dry fallen tree, leg. D.Telnov [1 ex. DTC]; INDONESIA E, West PAPUA, S Bird's Neck, Kaimana 40 km E, Triton bay, Lobo vill. env., 3°44'08"S, 134°05'40"E, 200-300 m, 15-17.IX.2010, primary rainforest on limestone & clearings, under rotten wet bark of large fallen trunk, leg. D.Telnov [7 exx DTC].

Notes: First record from southern peninsula of Halmahera and from Raja Ampat islands: Batanta.

***Platysoma (s. str.) debile* MARSEUL, 1864**

Material: INDONESIA or. KEI-ISLANDS ca. 10km W Tual city, vic. Ohoidertawun village, 10m, S5°37'13"/E132°39'20" 17.-20.II.2011 leg. A. Skale [1 ex. ASC].

Notes: First record from Kei Islands.

***Platysoma (s. str.) moluccanum* MARSEUL, 1864**

Material: INDONESIA Irian Jaya, 100km S Nabire, N Unipo-Epore, 500m, 02.I.1997, leg. A. Weigel [2 exx AWC]; INDONESIA Irian Jaya, Nabire 70km W, Gariau, Yamor lake, 03°42'S, 134°54'E, 2.III.1998, leg. A. Weigel [2 exx AWC]; INDONESIA Irian Jaya, Asori E km 60, Kwadewa, Camp nr. Wapoga River 02°49'S, 136°28'E UWP 9.-11.I.1999 leg. A. Weigel [1 ex. AWC]; W-PAPUA Raja Ampat Prov. Batanta Isl. bor., Waywesar 0°45'26"S, 130°46'55"E 12.-15.I.2004 leg. A. Skale UWP [2 exx ASC]; W-PAPUA Raja Ampat Prov. Waigeo Isl., Lopintol 0°07'54"S, 130°53'45"E 11.I.2004 leg. A. Weigel UWP [1 ex. AWC]; W-PAPUA Raja Ampat Prov. Batanta Isl. bor., Yensawai 0°48'05"S, 130°40'36"E 15.-18.I.2004 leg. A. Weigel [5 exx AWC]; INDONESIA N-Molukken Ternate, Laguna lake, 0°45'44"N, 127°21'6"E 11.I.2006 leg. A. Skale lake side [1 ex. ASC]; INDONESIA N-Molukken, Bacan, Labuha, Flußtal ca. 3km S, 40m, 0°40'28"S, 127°29'44"E 13.I.2006 leg. A. Weigel UWS [2 exx AWC]; INDONESIA N-Molukken, Bacan, Gorogoro, 0°23'27"S, 127°36'33"E 16.I.2006 leg. A. Weigel plantage + riverside [1 ex. AWC]; INDONESIA S-Halmahera, 2-3km N Dolik, Dolik river 0°15'49"S, 127°42'40"E 18.I.2006 leg. A. Weigel plantage + UWS [1 ex. AWC]; INDONESIA Halmahera m. 2-3km N. Dolik, Dolik river 0°15'49"S, 127°42'40"E 18./20.I.2006 leg. A. Skale plantage + UWS [3 exx ASC]; INDONESIA Halmahera NW, 7km S Jailolo, 200m, 1°1'18"N, 127°31'39"E 26/27.I.2006 leg. A. Weigel UWP + clearing [3 exx AWC]; INDONESIA N-Molukken Ternate, Laguna lake, 0°45'44"N, 127°21'6"E 29.I.2006 leg. A. Skale lake side [1 ex. ASC]; W-PAPUA, Manokwari Prov., ca. 16km NW Ransiki, Anggi Gida, Kampung Itkau, 1890m, 01°24'23"S, 133°55'53"E, 04.III.2007, leg.

A. Weigel [3 exx NME]; INDONESIA, prov. Maluku Utara (North Moluccas), Halmahera, Halmahera tengah (Central), Weda Selatan dist., Loleo vill. S env., Tilope vill. 10 km SW, way to Oham (along Gunung Talaga mt.), 0°13'15"N 127°53'28"E, 14.IX.2007, edge of secondary lowland forest, under rotten bark of large fallen trees, D.Telnov & K.Greke [4 exx DTC]; INDONESIA E, Prov. Raja Ampat, Misool SW, distr. Misool Utara, Aduwey (Adua) vill. ~2-5 km NNW, valley of River Hakau, 01°58'46"S, 129°54'37"E, 25-27.III.2009, primary lowland rainforest, under rotten bark of fallen tree, leg. D.Telnov & K.Greke [2 exx DTC]; INDONESIA E, West PAPUA, S Bird's Neck, Kaimana 47 km E, Triton bay, Kamaka (former Warika) vill. env., 3°46'42"S, 134°10'24"E, 50-130 m, 07.IX.2010, gardens, under lose bark of dry fallen tree, leg. D.Telnov [1 ex. DTC]; INDONESIA E, West PAPUA, S Bird's Neck, Kaimana 47 km E, Triton bay, Kamaka (former Warika) vill. env., Lake Kamakawalar and surroundings, 3°46'22"S, 134°12'02"E, 60-310 m, 08-09.IX.2010, primary lowland rainforest on limestone, under lose bark of fallen trees on forest edge, leg. D.Telnov [5 exx DTC]; INDONESIA E, West PAPUA, S Bird's Neck, Kaimana 47 km E, Triton bay, Kamaka (former Warika) vill. env., 3°46'42"S, 134°10'24"E, 50-130 m, 10.IX.2010, secondary rainforest on limestone & clearings, under lose bark of fallen tree, leg. D.Telnov [2 exx DTC]; INDONESIA W-PAPUA ca. 50km SE Kaimana, Triton bay, vic. Kamaka village, S3°49'50"/ E134°11'27", 10-50m, 02.-05.II.2011 leg. A. Skale [2 exx ASC]; INDONESIA or. KEI-ISLANDS, ca. 10km W Tual city, vic. Ohoidertawun village, 10m, S5°37'13"/E132°39'20", 17.-20.II.2011 leg. A. Weigel (013) [2 exx AWC]; INDONESIA or. ARU-ISLANDS, Wokam island, vic. Samang village, S5°40'20"/ E134°15'06", 10-20m 15.II.2011 (plantation) leg. A. Weigel

(012) [1 ex. AWC]; INDONESIA W-PAPUA, vic. Kaimana, road 18 km NE, S3°31'11"/ E133°40'15", 50-80m, 21.-25.II.2011 leg. A. Weigel (014) [1 ex. AWC]; INDONESIA E, West Papua, Tamarau mts, Bamus Bama vill. env., 00°45'19"S, 132°15'48"E, 730 m, 13-14.II.2012, primary & secondary lowland rainforest on limestone, under lose bark of large fallen trunk, leg. D.Telnov [1 ex. DTC]. Notes: New records from Raja Ampat Islands: Misool, from southern peninsula of Halmahera Island, Ternate Is., Bird's Neck isthmus & Tamarau Mts. of New Guinea, from Aru Islands and Kei Islands.

***Platysoma (s. str.) paugami* (LE GUILLOU, 1844)**

Material: INDONESIA Irian Jaya, 100km S Nabire, N Unipo-Epore, 500m, 02.I.1997, leg. A. Weigel [2 exx. AWC]; W-PAPUA Raja Ampat Prov. Waigeo Isl., Lopintol 0°07'54"S, 130°53'45"E 11.I.2004 leg. A.Weigel UWP [1 ex. AWC, 2 exx NME]; INDONESIA Irian Jaya, Asori E km 60, Kwadewa, Camp nr. Wapoga River 02°49'S, 136°28'E UWP 9.-11.I.1999 leg.A.Weigel [1 ex. AWC]; W-PAPUA Raja Ampat Prov. Waigeo Isl., Lopintol 0°07'54"S, 130°53'45"E 11.I.2004 leg. A.Skale UWP [1 ex. ASC]; W-PAPUA Raja Ampat Prov. Batanta Isl. bor., Waywesar 0°45'26"S, 130°46'55"E 12.-15.I.2004 leg. A.Skale UWP [1 ex. ASC]; W-PAPUA Raja Ampat Prov. Batanta Isl. bor., Yensawai 0°48'05"S, 130°40'36"E 15.-18.I.2004 leg. A.Weigel [5 exx. AWC, 3 exx NME]; W-PAPUA Raja Ampat Prov. Salawati Isl. or., 2-4km N Kalobo 01°00'56"S, 131°04'58"E 26.I.2004 leg. A.Skale [1 ex. ASC]; W-PAPUA Manokwari Prov. vic. Mokwam (Siyoubbrig), 1400-1800m, 01°06.26'S, 133°54.41'E, 24.-28.II.2007 leg. A. Skale sec./prim forest [1 ex. ASC]; W-PAPUA Manokwari Prov. ca. 20km W Manokwari, Prafi, 160m, 00°53.57'S, 133°55.06'E 08.III.2007 leg. A. Skale cutting area [1 ex.

ASC]; INDONESIA E, West PAPUA, S Bird's Neck, Kaimana 47 km E, Triton bay, Kamaka (former Warika) vill. env., Lake Kamakawalar and surroundings, 3°46'22"S, 134°12'02"E, 60-310 m, 08-09.IX.2010, primary lowland rainforest on limestone, under lose bark of fallen trees on forest edge, leg. D.Telnov [6 exx DTC]; INDONESIA E, West PAPUA, S Bird's Neck, Kaimana 47 km E, Triton bay, Kamaka (former Warika) vill. env., 3°46'42"S, 134°10'24"E, 50-130 m, 10.IX.2010, secondary rainforest on limestone & clearings, under lose bark of fallen tree, leg. M.Kalniņš [1 ex. DTC]; INDONESIA E, West PAPUA, S Bird's Neck, Kaimana 40 km E, Triton bay, Lobo vill. env., 3°45'45"S, 134°05'40"E, 130-140 m, 15.IX.2010, secondary rainforest on limestone, under wet rotten bark of large fallen trunk, leg. D.Telnov [1 ex. DTC]; INDONESIA E, West PAPUA, S Bird's Neck, Kaimana 2-4 km NE, 3°39'26"S, 133°46'21"E, 150-200 m, 19-20.IX.2010, primary lowland rainforest on limestone & clearing, leg. D.Telnov [1 ex. DTC]; INDONESIA W-PAPUA vic. Kaimana, road 10 km NE, S3°34'42"/E133°42'41", 40m, 01.II.2011 leg. A. Skale [1 ex. ASC]; INDONESIA E, W New Guinea, Doberai Peninsula, Arfak mts, Anggi Gigi Lake S env., Uper vill. ~2-2.5 km NNE, 1°17'10S, 133°54'18"E, 08.IX.2015, 1900-2480 m, primary mid montane rainforest, leg. D.Telnov [1 ex. DTC]; INDONESIA E, W New Guinea, Doberai Peninsula, Arfak mts, Anggi Gigi Lake S env., Uper vill. & surroundings, 1°18'09S, 133°54'07"E, 08.IX.2015, 1890-2100 m, primary mid montane rainforest, leg. D.Telnov [4 exx DTC].

Notes: First record from Indonesian New Guinea and from Bird's Neck isthmus, Arfak Mountains, Raja Ampat Islands: Batanta, Salawati & Waigeo.

***Platysoma (s. str.) torpens* MARSEUL, 1864**

Material: INDONESIA N-Molukken, Bacan, Labuha, Fluštal ca. 3km S, 40m, 0°40'28"S, 127°29'44"E 13.I.2006 leg. A. Weigel UWS [1 ex. AWC]; INDONESIA W-PAPUA, ca. 50km SE Kaimana, Triton bay, vic. Kamaka village, S3°49'50"/E134°11'27", 10-50m, 02.-05.II.2011 leg. A. Weigel (006) [1 ex. AWC]; INDONESIA E, North Moluccas, Halmahera SE, track from Patani to pond Sentosa NE of Patani, 0°17'44"N, 128°47'18"E, 250-300 m, primary lowland rainforest, under rotten & wet bark of large fallen trunk, 11.VII.2013, leg. D.Telnov [1 ex. DTC].

Notes: New records for south-eastern peninsula of Halmahera Island and from New Guinea.

***Platylister (s. str.) canalicollis* (MARSEUL, 1864)**

Material: INDONESIA E, West PAPUA, Fak-Fak peninsula, Fak-Fak 5-7 km N, 2°53'26"S, 132°18'22"E, 300-400 m, 23.IX.2010, primary lowland rainforest on limestone, under lose bark of dead standing tree, leg. D.Telnov [2 exx DTC].

Notes: First record from Indonesian New Guinea and from Onin Peninsula (referred as Fak-Fak peninsula on original label).

***Platylister (s. str.) hatamensis* (MARSEUL, 1879)**

Material: INDONESIA Halmahera m. 2-3km N.Dolik, Dolik river 0°15'49"S, 127°42'40"E 18./20.I.2006 leg. A. Skale plantage + UWS [3 exx ASC]; INDONESIA S-Halmahera, ca. 6km S Dolik, 0°18'29"S, 127°44'45"E 19.I.2006 leg. A. Skale [1 ex. NME]; INDONESIA E, Prov. Raja Ampat, Misool SW, distr. Misool Utara, Aduwey (Adua) vill. 2-5 km NNW, valley of River Hakau, 01°58'46"S, 129°54'37"E, 31.III.2009, primary lowland rainforest, under lose bark of large fallen trunk,

leg. D.Telnov & K.Greke [1 ex. DTC]; INDONESIA W-PAPUA vic. Kaimana, road 10 km NE, S3°34'42"/E133°42'41", 40m, 01.II.2011 leg. A. Skale [1 ex. ASC]; INDONESIA W-PAPUA vic. Kaimana, road 18 km NE, S3°31'11"/E133°40'15", 50-80m, 21.-25.II.2011 leg. A. Skale [1 aex. ASC].

Notes: New record from Bird's Neck isthmus of New Guinea, southern peninsula of Halmahera and Raja Ampat Islands: Misool.

***Platylister (s. str.) jobiensis* (MARSEUL, 1879)**

Material: W-PAPUA Raja Ampat Prov. Salawati Isl. bor., Kalam 0°57'11"S, 130°40'11"E 21.-24.I.2004 leg. A. Weigel [3 exx AWC]; W-PAPUA Raja Ampat Prov. Salawati Isl. or., 2-4km N Kalobo 01°00'56"S, 131°04'58"E 26.I.2004 leg. A. Skale [1 ex. ASC]; INDONESIA Halmahera m. 2-3km N. Dolik, Dolik river 0°15'49"S, 127°42'40"E 18./20.I.2006 leg. A. Skale plantage + UWS [1 ex. ASC]; INDONESIA Halmahera NW 7km S Jailolo, 200m, 1°1'18"N, 127°31'39"E 26/27.I.2006 leg. A. Skale, UWP + clearing [1 ex. ASC]; W-PAPUA Manokwari Prov. vic. Mokwam (Siyoubrig), 1400-1800m, 01°06.26'S, 133°54.41'E, 24.-28.II.2007 leg. A. Skale sec./prim. forest [1 ex. ASC]; INDONESIA E, Prov. Raja Ampat, Misool SW, distr. Misool Utara, Aduwey (Adua) vill. ~5 km NNE, valley of River Ifeylo, 01°58'41"S, 129°55'18"E, 26.III.2009, primary lowland rainforest, under rotten bark, leg. D.Telnov & K.Greke [1 ex. DTC]; INDONESIA W-PAPUA ca. 50km SE Kaimana, Triton bay, vic. Kamaka village, S3°49'50"/E134°11'27", 10-50m, 02.-05.II.2011 leg. A. Skale [1 ex. ASC].

Notes: New record from Bird's Head Peninsula and Bird's Neck isthmus of New Guinea, southern peninsula of Halmahera, Raja Ampat Islands: Misool & Salawati.

***Platylister (s. str.) ramoicolis* (MARSEUL, 1879)**

Material: INDONESIA E, West PAPUA, S Bird's Neck, Kaimana 47 km E, Triton bay, Kamaka (former Warika) vill. env., 3°46'42"S, 134°10'24"E, 50-130 m, 07.IX.2010, gardens, under lose bark of dry fallen tree, leg. D.Telnov [1 ex. DTC]; INDONESIA E, West PAPUA, S Bird's Neck, Kaimana 40 km E, Triton bay, Lobo vill. & env., 3°45'33"S, 134°06'11"E, 15 m, 16.IX.2010, secondary rainforest & gardens on limestone, leg. M.Kalniņš [1 ex. DTC]; INDONESIA E, West PAPUA, Fak-Fak peninsula, Fak-Fak 5-7 km N, 2°53'26"S, 132°18'22"E, 300-400 m, 23.IX.2010, primary lowland rainforest on limestone, under lose bark of dead standing tree, leg. D.Telnov [1 ex. DTC]; INDONESIA E, West PAPUA, Fak-Fak peninsula, Fak-Fak 12-13 km N, 2°50'06"S, 132°18'22"E, 880-920 m, 24.IX.2010, primary mossy lower montane rainforest on limestone, leg. D.Telnov [1 ex. DTC]; INDONESIA E, West Papua, Tamarau mts, Fef vill. ~6 km E, 00°49'24"S, 132°29'48"E, 450-500 m, 12.II.2012, primary lowland rainforest on limestone, under rotten & wet bark of large fallen trunk, leg. D.Telnov [4 exx DTC]; INDONESIA E, Raja Ampat, Waigeo Island, Waisai 3 km W, 00°26'04"S, 130°47'41"E, 40-50 m, 20.II.2012, secondary lowland rainforest on limestone & clearing, MV light, leg. D.Telnov [1 ex. DTC].

Notes: First record from Bird's Neck isthmus, Onin Peninsula (referred as "Fak-Fak peninsula" on original label) & Tamarau Mts. of New Guinea, and from Raja Ampat Islands: Waigeo.

***Platylister (s. str.) placitus* (LEWIS, 1906)**

Material: INDONESIA E, Prov. Raja Ampat, distr. Misool Barat, Lilinta (Lelintah) vill. ~20 km SW, Yan Island, 02°07'53"S, 130°07'17"E, 02.IV.2009, primary lowland

rainforest, under rotten bark leg. D.Telnov & K.Greķe [1 ex. DTC]; INDONESIA E, West PAPUA, S Bird's Neck, Kaimana 47 km E, Triton bay, Kamaka (former Warika) vill. env., 3°46'42"S, 134°10'24"E, 50-130 m, 07.IX.2010, gardens, under lose bark of dry fallen tree, leg. D.Telnov [1 ex. DTC]; INDONESIA E, West PAPUA, S Bird's Neck, Kaimana 40 km E, Triton bay, Lobo vill. & env., 3°45'33"S, 134°06'11"E, 15 m, 16.IX.2010, secondary rainforest & gardens on limestone, leg. M.Kalniņš [1 ex. DTC]; INDONESIA E, West PAPUA, Fak-Fak peninsula, Fak-Fak 5-7 km N, 2°53'26"S, 132°18'22"E, 300-400 m, 23.IX.2010, primary lowland rainforest on limestone, under lose bark of dead standing tree, leg. D.Telnov [4 exx DTC]; INDONESIA E, West PAPUA, Fak-Fak peninsula, Fak-Fak 12-13 km N, 2°50'06"S, 132°18'22"E, 880-920 m, 24.IX.2010, primary mossy lower montane rainforest on limestone, leg. D.Telnov [1 ex. DTC]; INDONESIA W-PAPUA vic. Kaimana, road 18 km NE, S3°31'11"/E133°40'15", 50-80m, 21.-25.II.2011 leg. A. Skale [1 ex. ASC].

Notes: First record from Indonesian New Guinea, Bird's Neck isthmus and Onin Peninsula, and Raja Ampat Islands: Misool.

***Platylister (Popinus) biimpressus* (J. SCHMIDT, 1892)**

Material: INDONESIA Irian Jaya, 170km S Nabire, Epomani, 1150m, 06.I.1997, leg. A. Weigel [1 ex. AWC].

Notes: First record from the Papuan region and New Guinea.

***Platylister (Popinus) dahdah* (MARSEUL, 1861)**

Material: INDONESIA Irian Jaya, Biak NE, Mara, 14.II.1998, leg. A. Weigel [1 ex. AWC]; INDONESIA Irian Jaya, Nabire 70km W, Gariau, Yamor lake, 03°42"S, 134°54"E, 2.III.1998, leg. A. Weigel [1 ex.

AWC]; INDONESIA Irian Jaya, Japen [sic!] SE, 20m E Serui, 02.-05.I.1999 prim.Urw., leg. A.Weigel KL [1 ex. AWC]; INDONESIA Irian Jaya, Japen [sic!] SE, 20m E Serui, 02.-05.I.1999 prim.Urw., leg. A.Weigel KL [1 ex. AWC]; INDONESIA Molukken, Bacan, 7km S Labuha, 120m, 14.I.2006, leg. A. Skale [1 ex. NME]; INDONESIA, Halmahera NW, 7km S Jailolo, 200m, 26./27.I.2006, leg. A. Skale UWP + clearing [6 exx ASC, 1 ex. NME]; INDONESIA, prov. Maluku Utara (North Moluccas), Halmahera tengah (Central), Weda Selatan dist., Loleo vill. SW env., Tilope vill. 8 km SW, 0°13'58,16"N 127°54'27,18"E, 10.IX.2007 secondary lowland forest, under bark of rotten *Ficus* sp. trunk, leg. D.Telnov & K.Greķe [14 exx DTC]; INDONESIA, prov. Maluku Utara (North Moluccas), Halmahera, Halmahera tengah (Central), Weda Selatan dist., Loleo vill. S env., Tilope vill. 18 km SW, Oham, 0°14'46,74"N 127°52'38,19"E, ~120 m, 16.IX.2007, edge of primary lowland forest, under bark, leg. D.Telnov & K.Greķe [2 exx DTC]; INDONESIA E, West PAPUA, S Bird's Neck, Kaimana 47 km E, Triton bay, Kamaka (former Warika) vill. env., 3°46'42"S, 134°10'24"E, 50-130 m, 07.IX.2010, gardens, under lose bark of dry fallen tree, leg. D.Telnov [2 exx DTC]; INDONESIA E, West PAPUA, S Bird's Neck, Kaimana 40 km E, Triton bay, Lobo vill. env., 3°44'08"S, 134°05'40"E, 200-300 m, 15-17.IX.2010, primary rainforest on limestone & clearings, under rotten wet bark of large fallen trunk, leg. D.Telnov [19 exx DTC]; INDONESIA E, West PAPUA, S Bird's Neck, Kaimana 40 km E, Triton bay, Lobo vill. & env., 3°45'33"S, 134°06'11"E, 15 m, 16.IX.2010, secondary rainforest & gardens on limestone, leg. M.Kalniņš [1 ex. DTC]; INDONESIA E, West Papua, Tamarau mts, Fef vill. ~6 km E, 00°49'24"S, 132°29'48"E, 450-500 m, 12.II.2012, primary lowland rainforest on limestone,

under rotten & wet bark of large fallen trunk, leg. D.Telnov [1 ex. DTC]. INDONESIA E, West PAPUA, S Bird's Neck, Kaimana 47 km E, Triton bay, Kamaka (former Warika) vill. env., 3°46'42"S, 134°10'24"E, 50-130 m, 07.IX.2010, gardens, under lose bark of dry fallen tree, leg. D.Telnov [3 exx DTC]; INDONESIA E, West PAPUA, S Bird's Neck, Kaimana 40 km E, Triton bay, Lobo vill. env., 3°44'08"S, 134°05'40"E, 200-300 m, 15-17.IX.2010, primary rainforest on limestone & clearings, under rotten wet bark of large fallen trunk, leg. D.Telnov [5 exx DTC]; INDONESIA W-PAPUA vic. Kaimana, road 10 km NE, S3°34'42"/E133°42'41", 40m, 01.II.2011 leg. A. Skale [3 exx ASC]; INDONESIA W-PAPUA ca. 50km SE Kaimana, Triton bay, vic. Kamaka village, S3°49'50"/E134°11'27", 10-50m, 02.-05.II.2011 leg. A. Skale [6 exx ASC].

Notes: First record from Bird's Neck isthmus of New Guinea, Biak Island and Yapen Island as well as from southern peninsula of Halmahera Island and Tamarau Mts. of New Guinea. According to the present experience, this is the most common species of *Platylister* subgenus *Popinus* MAZUR, 1999 in western part of the Papuan region.

***Platylister (Popinus) hemistrius* (MARSEUL, 1879)**

Material: INDONESIA, Raja Ampat, Waywesar / Batanta, 18.I.2004, leg. A. Weigel [4 exx NME]; W-PAPUA Raja Ampat Prov. Salawati Isl. bor., KIAM 0°57'11"S, 130°40'11"E 21.-24.I.2004 leg. A.Weigel [1 ex. NME]; INDONESIA E, West PAPUA, Fak-Fak peninsula, Fak-Fak 5-7 km N, 2°53'26"S, 132°18'22"E, 300-400 m, 23.IX.2010, primary lowland rainforest on limestone, under lose bark of dead standing tree, leg. D.Telnov [2 exx DTC]; INDONESIA E, West Papua, Tamarau mts, Bamus Bama vill. env., 00°45'19"S, 132°15'48"E, 730 m, 13-14.II.2012, primary & secondary lowland

rainforest on limestone, under lose bark of large fallen trunk, leg. D.Telnov [1 ex. DTC]. Notes: First record from Indonesian New Guinea, Onin Peninsula (referred as "Fak-Fak peninsula" on original label) & Tamarau Mts., Raja Ampat Islands: Batanta & Salawati.

***Platylister (Popinus) querulus* (MARSEUL, 1864)**

Material: INDONESIA S-Halmahera, ca. 6km S Dolik, 0°18'29"S, 127°44'45"E 19.I.2006 leg. A. Weigel plantage [1 ex. AWC]; W-PAPUA Manokwari Prov. vic. Mokwam (Siyoubbrig), 1400-1800m, 01°06.26'S, 133°54.41'E, 24.-28.II.2007 leg. A. Skale sec./prim forest [1 ex. ASC]; INDONESIA E, West Papua, Tamarau mts, Bamus Bama vill. env., 00°45'19"S, 132°15'48"E, 730 m, 13-14.II.2012, primary & secondary lowland rainforest on limestone, under lose bark of large fallen trunk, leg. D.Telnov [1 ex. DTC].

Notes: First record from North Moluccas, southern peninsula of Halmahera Island and Indonesian New Guinea (Tamarau Mts., Bird's Head Peninsula).

***Eblisia speculipyga* (MARSEUL, 1879)**

Material: INDONESIA, W-PAPUA, Nabire, road Nabire - Ilaga, X.1997, leg. M.Balke [2 exx NME].

***Kanaarister amphibius* (MARSEUL, 1864)**

Material: INDONESIA Irian Jaya, Asori E km 60, Kwadewa, Camp nr. Wapoga River 02°49'S, 136°28'E UWP 9.-11.I.1999 leg. A. Weigel [1 ex. AWC].

Notes: First record from Indonesian New Guinea.

***Atholus myrmidion* (MARSEUL, 1861)**

Material: INDONESIA Irian Jaya, Wamena, Ufer Baliem River, 19.01.1999, leg. A. Weigel [1 ex. AWC].

Notes: First records from Baliem Valley.

***Platylomalus gardineri* (SCOTT, 1913)**

Material: INDONESIA Irian Jaya, Asori E km 60, Kwadewa, Camp nr. Wapoga River 02°49'S, 136°28'E UWP 9.-11.I.1999 leg.A.Weigel [1 ex. AWC]; INDONESIA W-PAPUA vic. Kaimana, road 10 km NE, S3°34'42"/E133°42'41", 40m, 01.II.2011 leg. A. Skale [1 ex. ASC]; INDONESIA W-PAPUA vic. Kaimana, road 18 km NE, S3°31'11"/E133°40'15", 50-80m, 21.-25. II.2011 leg. A. Skale [2 exx ASC].

Notes: First record from Papuan region and New Guinea.

***Platylomalus musicus* (MARSEUL, 1864)**

Material: INDONESIA Irian Jaya, Asori E km 60, Kwadewa, Camp nr. Wapoga River 02°49'S, 136°28'E UWP 9.-11.I.1999 leg.A.Weigel [11 exx NME]; W-PAPUA Raja Ampat Prov. Batanta Isl. bor., 2 km E Waywesar, 0°45'17"S, 130°48'06"E 18.I.2004 leg. A. Weigel Rodung Küste [1 ex. ASC, 1 ex. AWC]; W-PAPUA Raja Ampat Prov. Salawati Isl. or., 2-4km N Kalobo 01°00'56"S, 131°04'58"E 26.I.2004 leg. A.Skale [1 ex. ASC]; INDONESIA, prov. Maluku Utara (North Moluccas), Halmahera, Halmahera tengah (Central), Weda Selatan dist., Loleo vill. SW env., Tilope vill. env., 0°13'58,16"N 127°54'27,18"E, 09.IX.2007, gardens, under dry bark of dry standing trees, leg. D.Telnov & K.Greķe [2 exx DTC]; INDONESIA, prov. Maluku Utara (North Moluccas), Halmahera, Halmahera tengah (Central), Weda Selatan dist., Loleo vill. S env., Tilope vill. 10-15 km SW, between Gunung Talaga mt. and Oham, 12.IX.2007, secondary lowland rainforest, under dry bark of large fallen trunk, leg. D.Telnov & K.Greķe [2 exx DTC]; INDONESIA E, West Papua, Tamarau mts, Bamus Bama vill. env., 00°45'19"S, 132°15'48"E, 730 m, 13-14.II.2012, primary & secondary lowland

rainforest on limestone, under lose bark of large fallen trunk, leg. D.Telnov [1 ex. DTC]; INDONESIA E, Raja Ampat, Waigeo Island, Waisai 10-13 km NE, 00°21'17"S, 130°54'37"E, ~70 m, 16.II.2012, primary lowland rainforest on limestone, leg. D.Telnov [1 ex. DTC].

Notes: First record from southern peninsula of Halmahera Island, Raja Ampat Islands: Batanta, Salawati & Waigeo, and from Tamarau Mts. of New Guinea.

***Platylomalus oceanitis* (MARSEUL, 1855)**

Material: INDONESIA, Westpapua, Nabire, Kali Bobo, IV.1998, leg. M. Balke [1 ex. NME]; INDONESIA Irian Jaya, Nabire 70km W, Gariau, Yamor lake, 03°42"S, 134°54"E, 2.III.1998, leg. A. Weigel [3 exx AWC]; INDONESIA Irian Jaya, Asori N Somyangga, 02°37'S, 136°13'E UWP KL 07.I.1999 leg.A.Weigel [1 ex. AWC]; INDONESIA, prov. Maluku Utara (North Moluccas), Halmahera tengah (Central), Weda Selatan dist., Loleo vill. SW env., Tilope vill. 8 km SW, 0°13'58,16"N 127°54'27,18"E, 10.IX.2007 secondary lowland forest, under bark of rotten *Ficus* sp. trunk, leg. D.Telnov & K.Greķe [2 exx DTC]; INDONESIA, prov. Maluku Utara (North Moluccas), Halmahera, Halmahera tengah (Central), Weda Selatan dist., Loleo vill. S env., Tilope vill. 18 km SW, Oham, 0°14'46,74"N 127°52'38,19"E, ~120 m, 16.IX.2007, edge of primary lowland forest, under bark, leg. D.Telnov & K.Greķe [13 exx DTC]; INDONESIA E, West PAPUA, S Bird's Neck, Kaimana 47 km E, Triton bay, Kamaka (former Warika) vill. env., 3°46'42"S, 134°10'24"E, 50-130 m, 07.IX.2010, gardens, under lose bark of dry fallen tree, leg. D.Telnov [1 ex. DTC]; INDONESIA E, West PAPUA, S Bird's Neck, Kaimana 47 km E, Triton bay, Kamaka (former Warika) vill. env., 3°46'42"S, 134°10'24"E, 50-130 m, 10.IX.2010, secondary rainforest on limestone & clearings,

under lose bark of fallen tree, leg. D.Telnov [1 ex. DTC]; INDONESIA E, West PAPUA, S Bird's Neck, Kaimana 40 km E, Triton bay, Lobo vill. & env., 3°45'33"S, 134°06'11"E, 15 m, 16.IX.2010, secondary rainforest & gardens on limestone, leg. M.Kalniņš [1 ex. DTC]; INDONESIA W-PAPUA ca. 50km SE Kaimana, Triton bay, vic. Kamaka village, S3°49'50"/ E134°11'27", 10-50m, 02.-05.II.2011 leg. A. Skale [1 ex. ASC].

Notes: First record from Bird's Neck isthmus of New Guinea and southern peninsula of Halmahera Island.

***Eulomalus amplipes* COOMAN, 1937**

Material: INDONESIA, Westpapua, Nabire, IV.1998, leg. M. Balke [1 ex. NME]; INDONESIA E, West PAPUA, Fak-Fak peninsula, Fak-Fak 5-7 km N, 2°53'26"S, 132°18'22"E, 300-400 m, 23.IX.2010, primary lowland rainforest on limestone, under lose bark of dead standing tree, leg. D.Telnov [1 ex. DTC].

Notes: First record from Indonesian New Guinea and Onin Peninsula (referred as "Fak-Fak peninsula" on original label).

***Eulomalus miliaris* (MARSEUL, 1870)**

Material: INDONESIA, W-PAPUA, Nabire, road Nabire - Ilaga, X.1997, leg. M.Balke [1 ex. NME].

Notes: First record from the Papuan region and New Guinea.

***Eulomalus pradali* (MARSEUL, 1864)**

Material: INDONESIA, Iria Jaya, distr. Fakf Fak, Yamor lake area, VIII.1998, leg. M.Balke [1 ex. NME]; INDONESIA E, West PAPUA, S Bird's Neck, Kaimana 47 km E, Triton bay, Kamaka (former Warika) vill. env., 3°46'42"S, 134°10'24"E, 50-130 m, 10.IX.2010, secondary rainforest on limestone & clearings, under lose bark of fallen tree, leg. M.Kalniņš [1 ex. DTC]; INDONESIA W-PAPUA vic. Kaimana,

road 10 km NE, S3°34'42"/E133°42'41", 40m, 01.II.2011 leg. A. Skale [1 ex. ASC]; INDONESIA W-PAPUA ca. 50km SE Kaimana, Triton bay, vic. Kamaka village, S3°49'50"/ E134°11'27", 10-50m, 02.-05.II.2011 leg. A. Skale [1 ex. ASC]; INDONESIA E, West Papua, Tamarau mts, Fef vill. ~6 km E, 00°49'24"S, 132°29'48"E, 450-500 m, 12.II.2012, primary lowland rainforest on limestone, under rotten & wet bark of large fallen trunk, leg. D.Telnov [2 exx DTC].

Notes: First record from Tamarau Mts. of New Guinea.

***Saprinus cyaneus cyaneus* (FABRICIUS, 1775)**

Material: INDONESIA E, S New Guinea, Merauke 24,5 km N, Salore vill env., Kumbe left riverbank, 8°16'40"S, 140°23'11"E, 17.IX.2015, 10 m, secondary lowland riverine rainforest, on freshly dead *Morelia amethystina*, leg. D.Telnov [3 exx DTC].

Notes: First record from Indonesian part of Transfly Lowlands.

***Teretrius (Neotepetrius) novaeguineae* (BICKHARDT, 1918)**

Material: INDONESIA W-PAPUA, ca. 130km SE Kaimana, Omba (=Yamor) river, 10-20km from coast, S4°05'49"/ E134°54'09", 10-20m, 09.-11.II.2011 leg. A. Weigel (008) [1 ex. AWC].

Notes: First record from Bird's Neck isthmus of New Guinea.

Acknowledgements

We thank our colleagues Dr. Piet Kanaar (Oegstgeest, The Netherlands) and Dr. Ludwig Erbeling (Plattenberg, Germany) for identification of certain specimens. Dr. Michael Balke (Zoologische Staatssammlung München, Germany) and Dr. Mārtiņš Kalniņš

(the Entomological Society of Latvia, Sigulda, Latvia) are thanked for sharing some of his collected specimens with us. We are grateful to our colleague Amoret Spooner (Oxford University Museum of Natural History, U.K.) for the English proof.

References

- Darlington P.J., Jr. 1962. The Carabid beetles of New Guinea. Part I. Cicindelinae, Carabinae, Harpalinae through Pterostichini. – *Bulletin of the Museum of Comparative Zoology* **126**: 321-564, pls. 1-4.
- Darlington P.J., Jr. 1971. The Carabid beetles of New Guinea. Part IV. General considerations, analysis and history of the fauna, taxonomic supplement. – *Bulletin of the Museum of Comparative Zoology* **142**: 129-337.
- Lackner T. 2008. The Clown beetles (Coleoptera: Histeridae) of Papua Indonesia [on-line check-list]: <http://www.papua-insects.nl/insect%20orders/Coleoptera/Histeridae/Histeridae.htm> [last accessed: 08.11.2014].
- Mazur S. 2011. *A concise catalogue of the Histeridae (Insecta: Coleoptera)*. Warsaw University of Life Sciences – SGGW Press, Warsaw: 332 pp.
- Telnov D. 2011. *Anthicidae (Insecta: Coleoptera) of the Indo-Australian transition zone: Taxonomy, diversity and biogeography*. Summary of the Doctoral thesis in biology, zoology. Faculty of Biology, University of Latvia. Rīga: 54 pp.

Received: 22.11.2014.



1



2



3



4

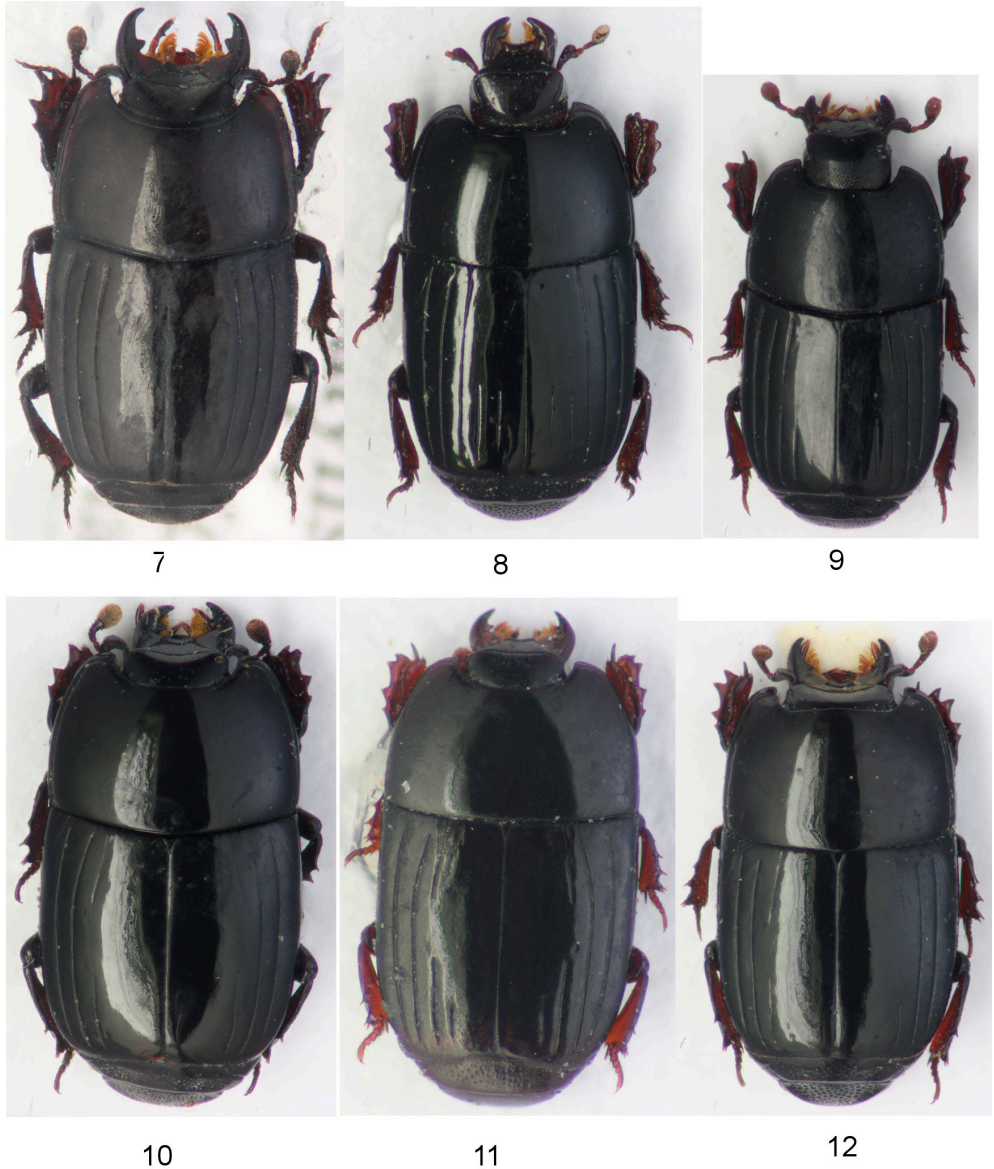


5



6

Figures 1-6. Papuan Histeridae, habitus, dorsal view. 1 – *Hololepta elongata* ERICHSON, specimen from New Guinea, Triton Bay; 2 – *H. immarginata* J. SCHMIDT, specimen from New Guinea, Triton Bay; 3 – *H. indica* ERICHSON, specimen from S Halmahera Is., Tilope vill. env.; 4 – *Asterix appendiculatus* (J. SCHMIDT), specimen from New Guinea, Triton Bay; 5 – *Tribalus koenigius* MARSEUL, specimen from Misool Is.; 6 – *Tribalus marseuli* GOMY, specimen from New Guinea, Onin Perninsula.



Figures 7-12. Papuan Histeridae, habitus, dorsal view. 7 – *Platylister canalicollis* (MARSEUL), specimen from New Guinea, Onin Perninsula; 8 – *Platylister crybripygus* MARSEUL, specimen from New Guinea, Triton Bay; 9 – *Platylister dahdah* MARSEUL, specimen from S Halmahera Is., Tilope vill. env.; 10 – *Platylister hatamensis* MARSEUL, specimen from Misool Is.; 11 – *Platylister hemistrius* MARSEUL, specimen from New Guinea, Tamarau Mts.; 12 – *Platylister jobiensis* MARSEUL, specimen from Misool Is.



13

14

15



16

17

18

Figures 13-18. Papuan Histeridae, habitus, dorsal view. 13 – *Platysoma moluccanum* MARSEUL, specimen from S Halmahera Is., Tilope vill. env.; 14 – *Platysoma paugami* (LE GUILLOU), specimen from New Guinea, Triton Bay; 15 – *Platylister querulus* MARSEUL, specimen from New Guinea, Tamarau Mts.; 16 – *Platylister ramoicolis* MARSEUL, specimen from New Guinea, Triton Bay; 17 – *Platysoma torpens* MARSEUL, specimen from SE Halmahera Is., Patani env.; 18 – *Platylister placitus* (LEWIS), specimen from New Guinea, Onin Peninsula.



Figures 19-23. Papuan Histeridae, habitus, dorsal view. 19 – *Platylomalus musicus* (MARSEUL), specimen from S Halmahera Is., Tilope vill. env.; 20 – *Platylomalus oceanitis* (MARSEUL), specimen from New Guinea, Triton Bay; 21 – *Eulomalus pradali* (MARSEUL), specimen from New Guinea, Triton Bay; 22 – *Eulomalus amplipes* COOMAN, specimen from New Guinea, Onin Perninsula; 23 – *Saprinus cyaneus cyaneus* (FABRICIUS), specimen from S New Guinea, Merauke env.



Map 2. Schematic map of sampling localities in the Papuan region. Each black dot represent one or several closely located sampling spots (for sampling locations see geographic coordinates in species list). Consider prevalence of sampling localities in the western part of the region. Map is prepared with ArcGIS 9.0.